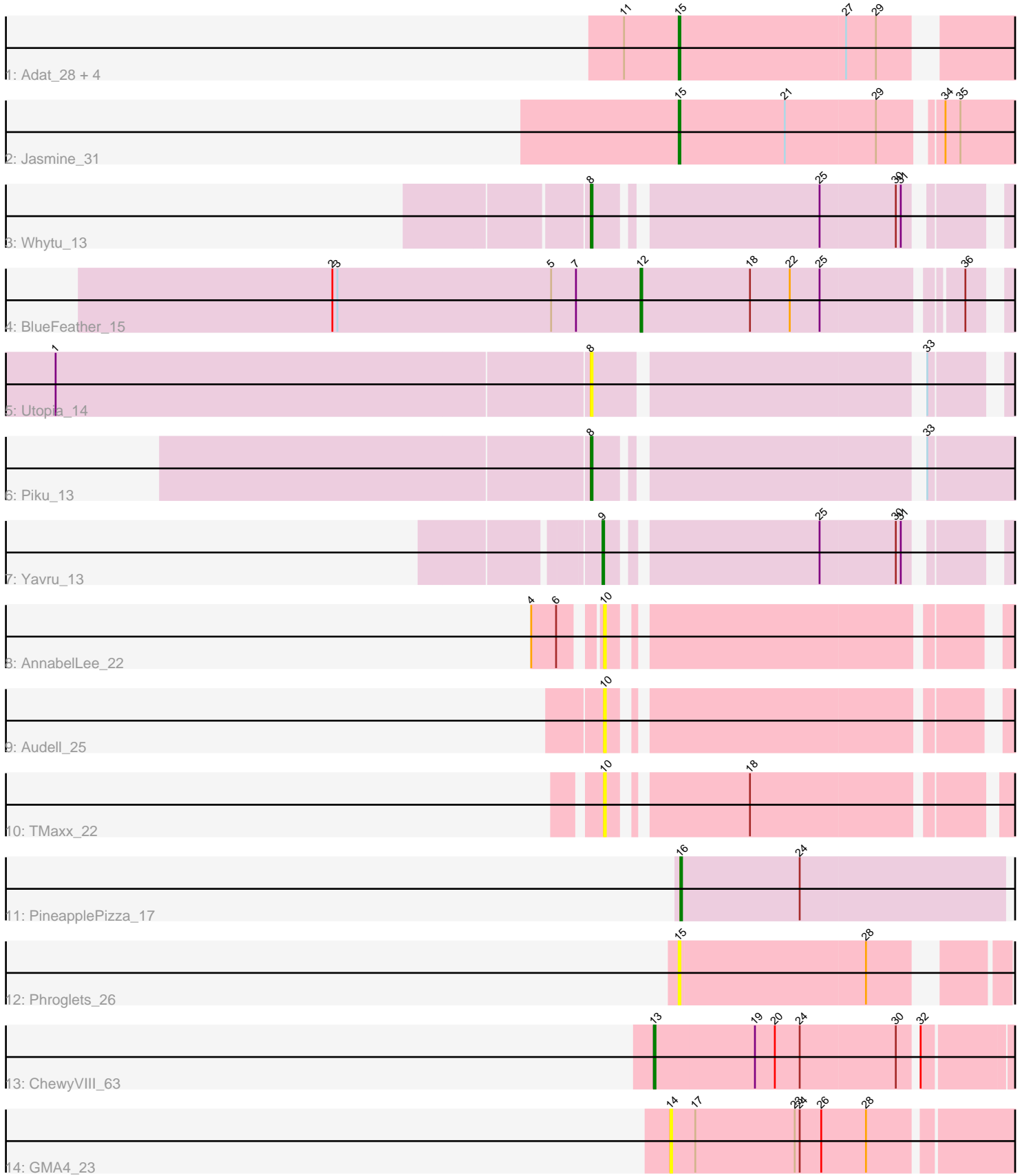


Pham 203350



Note: Tracks are now grouped by subcluster and scaled. Switching in subcluster is indicated by changes in track color. Track scale is now set by default to display the region 30 bp upstream of start 1 to 30 bp downstream of the last possible start. If this default region is judged to be packed too tightly with annotated starts, the track will be further scaled to only show that region of the ORF with annotated starts. This action will be indicated by adding "Zoomed" to the title. For starts, yellow indicates the location of called starts comprised solely of Glimmer/GeneMark auto-annotations, green indicates the location of called starts with at least 1 manual gene annotation.

## Pham 203350 Report

This analysis was run 01/18/25 on database version 583.

Pham number 203350 has 18 members, 6 are drafts.

Phages represented in each track:

- Track 1 : Adat\_28, Nellie\_28, Casserole\_29, GurgleFerb\_28, Brad\_28
- Track 2 : Jasmine\_31
- Track 3 : Whytu\_13
- Track 4 : BlueFeather\_15
- Track 5 : Utopia\_14
- Track 6 : Piku\_13
- Track 7 : Yavru\_13
- Track 8 : AnnabelLee\_22
- Track 9 : Audell\_25
- Track 10 : TMaxx\_22
- Track 11 : PineapplePizza\_17
- Track 12 : Phroglets\_26
- Track 13 : ChewyVIII\_63
- Track 14 : GMA4\_23

### ***Summary of Final Annotations (See graph section above for start numbers):***

The start number called the most often in the published annotations is 15, it was called in 6 of the 12 non-draft genes in the pham.

Genes that call this "Most Annotated" start:

- Adat\_28, Brad\_28, Casserole\_29, GurgleFerb\_28, Jasmine\_31, Nellie\_28, Phroglets\_26,

Genes that have the "Most Annotated" start but do not call it:

- 

Genes that do not have the "Most Annotated" start:

- AnnabelLee\_22, Audell\_25, BlueFeather\_15, ChewyVIII\_63, GMA4\_23, Piku\_13, PineapplePizza\_17, TMaxx\_22, Utopia\_14, Whytu\_13, Yavru\_13,

### **Summary by start number:**

Start 8:

- Found in 3 of 18 ( 16.7% ) of genes in pham
- Manual Annotations of this start: 2 of 12
- Called 100.0% of time when present
- Phage (with cluster) where this start called: Piku\_13 (FE), Utopia\_14 (FE), Whytu\_13 (FE),

Start 9:

- Found in 1 of 18 ( 5.6% ) of genes in pham
- Manual Annotations of this start: 1 of 12
- Called 100.0% of time when present
- Phage (with cluster) where this start called: Yavru\_13 (FE),

Start 10:

- Found in 3 of 18 ( 16.7% ) of genes in pham
- No Manual Annotations of this start.
- Called 100.0% of time when present
- Phage (with cluster) where this start called: AnnabelLee\_22 (FR), Audell\_25 (FR), TMaxx\_22 (FR),

Start 12:

- Found in 1 of 18 ( 5.6% ) of genes in pham
- Manual Annotations of this start: 1 of 12
- Called 100.0% of time when present
- Phage (with cluster) where this start called: BlueFeather\_15 (FE),

Start 13:

- Found in 1 of 18 ( 5.6% ) of genes in pham
- Manual Annotations of this start: 1 of 12
- Called 100.0% of time when present
- Phage (with cluster) where this start called: ChewyVIII\_63 (singleton),

Start 14:

- Found in 1 of 18 ( 5.6% ) of genes in pham
- No Manual Annotations of this start.
- Called 100.0% of time when present
- Phage (with cluster) where this start called: GMA4\_23 (singleton),

Start 15:

- Found in 7 of 18 ( 38.9% ) of genes in pham
- Manual Annotations of this start: 6 of 12
- Called 100.0% of time when present
- Phage (with cluster) where this start called: Adat\_28 (AV), Brad\_28 (AV), Casserole\_29 (AV), GurgleFerb\_28 (AV), Jasmine\_31 (AV), Nellie\_28 (AV), Phroglets\_26 (singleton),

Start 16:

- Found in 1 of 18 ( 5.6% ) of genes in pham
- Manual Annotations of this start: 1 of 12
- Called 100.0% of time when present
- Phage (with cluster) where this start called: PineapplePizza\_17 (GI),

**Summary by clusters:**

There are 5 clusters represented in this pham: FR, FE, singleton, GI, AV,

Info for manual annotations of cluster AV:

- Start number 15 was manually annotated 6 times for cluster AV.

Info for manual annotations of cluster FE:

- Start number 8 was manually annotated 2 times for cluster FE.
- Start number 9 was manually annotated 1 time for cluster FE.
- Start number 12 was manually annotated 1 time for cluster FE.

Info for manual annotations of cluster GI:

- Start number 16 was manually annotated 1 time for cluster GI.

### ***Gene Information:***

Gene: Adat\_28 Start: 27242, Stop: 27427, Start Num: 15

Candidate Starts for Adat\_28:

(11, 27209), (Start: 15 @27242 has 6 MA's), (27, 27341), (29, 27359),

Gene: AnnabelLee\_22 Start: 15054, Stop: 15263, Start Num: 10

Candidate Starts for AnnabelLee\_22:

(4, 15021), (6, 15036), (10, 15054),

Gene: Audell\_25 Start: 18348, Stop: 18557, Start Num: 10

Candidate Starts for Audell\_25:

(10, 18348),

Gene: BlueFeather\_15 Start: 11595, Stop: 11813, Start Num: 12

Candidate Starts for BlueFeather\_15:

(2, 11409), (3, 11412), (5, 11541), (7, 11556), (Start: 12 @11595 has 1 MA's), (18, 11661), (22, 11685), (25, 11703), (36, 11778),

Gene: Brad\_28 Start: 27240, Stop: 27425, Start Num: 15

Candidate Starts for Brad\_28:

(11, 27207), (Start: 15 @27240 has 6 MA's), (27, 27339), (29, 27357),

Gene: Casserole\_29 Start: 28530, Stop: 28715, Start Num: 15

Candidate Starts for Casserole\_29:

(11, 28497), (Start: 15 @28530 has 6 MA's), (27, 28629), (29, 28647),

Gene: ChewyVIII\_63 Start: 44877, Stop: 45083, Start Num: 13

Candidate Starts for ChewyVIII\_63:

(Start: 13 @44877 has 1 MA's), (19, 44937), (20, 44949), (24, 44964), (30, 45021), (32, 45030),

Gene: GMA4\_23 Start: 21682, Stop: 21882, Start Num: 14

Candidate Starts for GMA4\_23:

(14, 21682), (17, 21697), (23, 21757), (24, 21760), (26, 21772), (28, 21799),

Gene: GurgleFerb\_28 Start: 27241, Stop: 27426, Start Num: 15

Candidate Starts for GurgleFerb\_28:

(11, 27208), (Start: 15 @27241 has 6 MA's), (27, 27340), (29, 27358),

Gene: Jasmine\_31 Start: 29111, Stop: 29302, Start Num: 15

Candidate Starts for Jasmine\_31:

(Start: 15 @29111 has 6 MA's), (21, 29174), (29, 29228), (34, 29258), (35, 29267),

Gene: Nellie\_28 Start: 27242, Stop: 27427, Start Num: 15

Candidate Starts for Nellie\_28:

(11, 27209), (Start: 15 @27242 has 6 MA's), (27, 27341), (29, 27359),

Gene: Phroglets\_26 Start: 27257, Stop: 27436, Start Num: 15

Candidate Starts for Phroglets\_26:

(Start: 15 @27257 has 6 MA's), (28, 27368),

Gene: Piku\_13 Start: 11763, Stop: 12017, Start Num: 8

Candidate Starts for Piku\_13:

(Start: 8 @11763 has 2 MA's), (33, 11940),

Gene: PineapplePizza\_17 Start: 15012, Stop: 15206, Start Num: 16

Candidate Starts for PineapplePizza\_17:

(Start: 16 @15012 has 1 MA's), (24, 15084),

Gene: TMaxx\_22 Start: 14862, Stop: 15074, Start Num: 10

Candidate Starts for TMaxx\_22:

(10, 14862), (18, 14934),

Gene: Utopia\_14 Start: 11737, Stop: 11985, Start Num: 8

Candidate Starts for Utopia\_14:

(1, 11419), (Start: 8 @11737 has 2 MA's), (33, 11920),

Gene: Whytu\_13 Start: 11841, Stop: 12083, Start Num: 8

Candidate Starts for Whytu\_13:

(Start: 8 @11841 has 2 MA's), (25, 11964), (30, 12009), (31, 12012),

Gene: Yavru\_13 Start: 11742, Stop: 11978, Start Num: 9

Candidate Starts for Yavru\_13:

(Start: 9 @11742 has 1 MA's), (25, 11859), (30, 11904), (31, 11907),