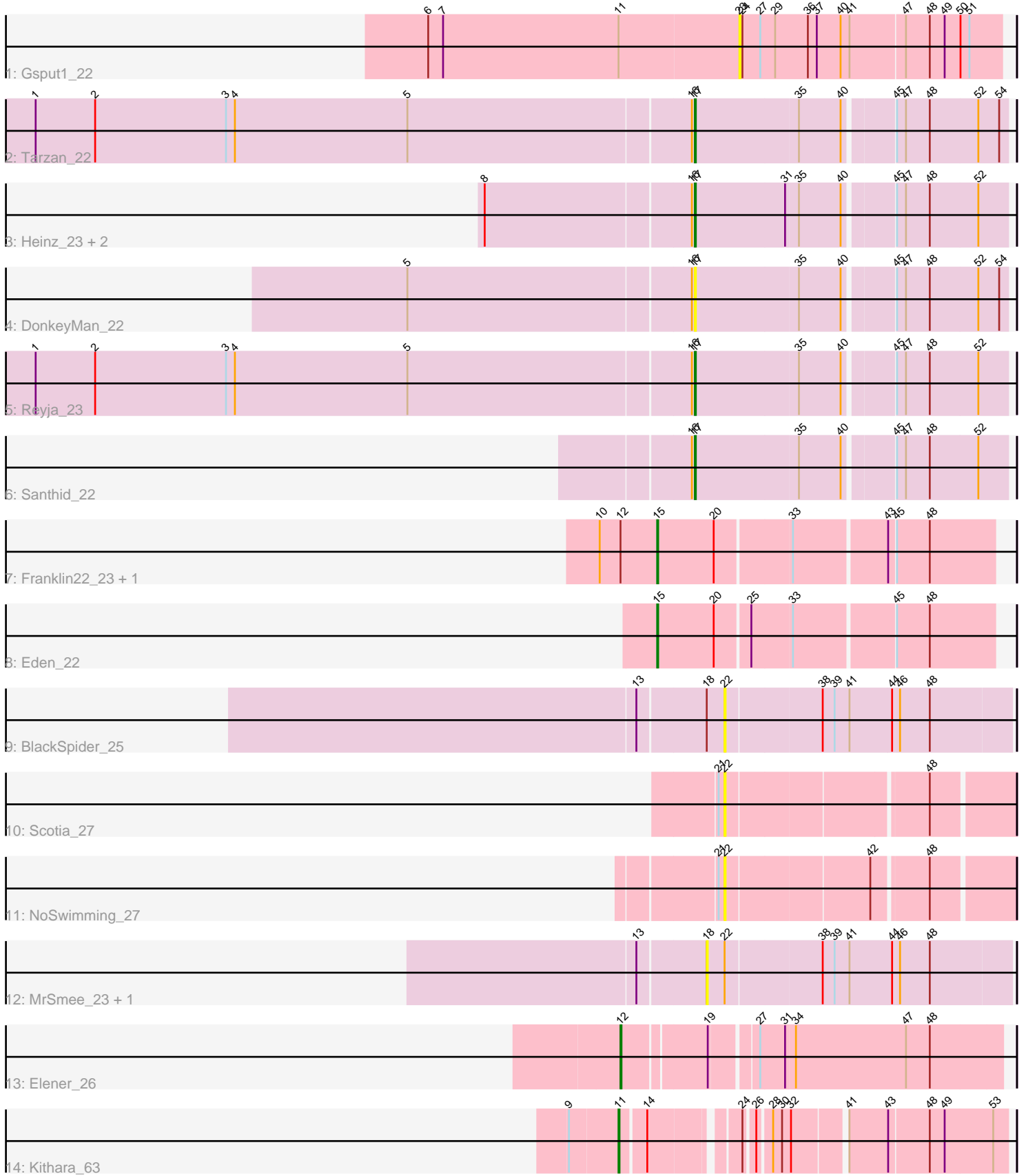


Pham 203354



Note: Tracks are now grouped by subcluster and scaled. Switching in subcluster is indicated by changes in track color. Track scale is now set by default to display the region 30 bp upstream of start 1 to 30 bp downstream of the last possible start. If this default region is judged to be packed too tightly with annotated starts, the track will be further scaled to only show that region of the ORF with annotated starts. This action will be indicated by adding "Zoomed" to the title. For starts, yellow indicates the location of called starts comprised solely of Glimmer/GeneMark auto-annotations, green indicates the location of called starts with at least 1 manual gene annotation.

Pham 203354 Report

This analysis was run 01/18/25 on database version 583.

Pham number 203354 has 18 members, 8 are drafts.

Phages represented in each track:

- Track 1 : Gsput1_22
- Track 2 : Tarzan_22
- Track 3 : Heinz_23, Jojo24_22, Hibiscus_22
- Track 4 : DonkeyMan_22
- Track 5 : Reyja_23
- Track 6 : Santhid_22
- Track 7 : Franklin22_23, Gack_22
- Track 8 : Eden_22
- Track 9 : BlackSpider_25
- Track 10 : Scotia_27
- Track 11 : NoSwimming_27
- Track 12 : MrSmee_23, Skitty_27
- Track 13 : Elener_26
- Track 14 : Kithara_63

Summary of Final Annotations (See graph section above for start numbers):

The start number called the most often in the published annotations is 17, it was called in 5 of the 10 non-draft genes in the pham.

Genes that call this "Most Annotated" start:

- DonkeyMan_22, Heinz_23, Hibiscus_22, Jojo24_22, Reyja_23, Santhid_22, Tarzan_22,

Genes that have the "Most Annotated" start but do not call it:

-

Genes that do not have the "Most Annotated" start:

- BlackSpider_25, Eden_22, Elener_26, Franklin22_23, Gack_22, Gsput1_22, Kithara_63, MrSmee_23, NoSwimming_27, Scotia_27, Skitty_27,

Summary by start number:

Start 11:

- Found in 2 of 18 (11.1%) of genes in pham
- Manual Annotations of this start: 1 of 10
- Called 50.0% of time when present
- Phage (with cluster) where this start called: Kithara_63 (singleton),

Start 12:

- Found in 3 of 18 (16.7%) of genes in pham
- Manual Annotations of this start: 1 of 10
- Called 33.3% of time when present
- Phage (with cluster) where this start called: Elener_26 (singleton),

Start 15:

- Found in 3 of 18 (16.7%) of genes in pham
- Manual Annotations of this start: 3 of 10
- Called 100.0% of time when present
- Phage (with cluster) where this start called: Eden_22 (EB), Franklin22_23 (EB), Gack_22 (EB),

Start 17:

- Found in 7 of 18 (38.9%) of genes in pham
- Manual Annotations of this start: 5 of 10
- Called 100.0% of time when present
- Phage (with cluster) where this start called: DonkeyMan_22 (DY), Heinz_23 (DY), Hibiscus_22 (DY), Jojo24_22 (DY), Reyja_23 (DY), Santhid_22 (DY), Tarzan_22 (DY),

Start 18:

- Found in 3 of 18 (16.7%) of genes in pham
- No Manual Annotations of this start.
- Called 66.7% of time when present
- Phage (with cluster) where this start called: MrSmee_23 (FQ), Skitty_27 (FQ),

Start 22:

- Found in 5 of 18 (27.8%) of genes in pham
- No Manual Annotations of this start.
- Called 60.0% of time when present
- Phage (with cluster) where this start called: BlackSpider_25 (FN), NoSwimming_27 (FO), Scotia_27 (FO),

Start 23:

- Found in 1 of 18 (5.6%) of genes in pham
- No Manual Annotations of this start.
- Called 100.0% of time when present
- Phage (with cluster) where this start called: Gspu1_22 (CU2),

Summary by clusters:

There are 7 clusters represented in this pham: FQ, singleton, CU2, EB, DY, FN, FO,

Info for manual annotations of cluster DY:

- Start number 17 was manually annotated 5 times for cluster DY.

Info for manual annotations of cluster EB:

•Start number 15 was manually annotated 3 times for cluster EB.

Gene Information:

Gene: BlackSpider_25 Start: 20146, Stop: 20424, Start Num: 22

Candidate Starts for BlackSpider_25:

(13, 20062), (18, 20128), (22, 20146), (38, 20239), (39, 20251), (41, 20266), (44, 20308), (46, 20314), (48, 20344),

Gene: DonkeyMan_22 Start: 18572, Stop: 18871, Start Num: 17

Candidate Starts for DonkeyMan_22:

(5, 18290), (16, 18569), (Start: 17 @18572 has 5 MA's), (35, 18674), (40, 18716), (45, 18761), (47, 18770), (48, 18794), (52, 18842), (54, 18863),

Gene: Eden_22 Start: 17389, Stop: 17712, Start Num: 15

Candidate Starts for Eden_22:

(Start: 15 @17389 has 3 MA's), (20, 17446), (25, 17479), (33, 17518), (45, 17614), (48, 17647),

Gene: Elener_26 Start: 21147, Stop: 21506, Start Num: 12

Candidate Starts for Elener_26:

(Start: 12 @21147 has 1 MA's), (19, 21225), (27, 21267), (31, 21291), (34, 21300), (47, 21411), (48, 21435),

Gene: Franklin22_23 Start: 17574, Stop: 17897, Start Num: 15

Candidate Starts for Franklin22_23:

(10, 17517), (Start: 12 @17538 has 1 MA's), (Start: 15 @17574 has 3 MA's), (20, 17631), (33, 17703), (43, 17793), (45, 17799), (48, 17832),

Gene: Gack_22 Start: 17460, Stop: 17783, Start Num: 15

Candidate Starts for Gack_22:

(10, 17403), (Start: 12 @17424 has 1 MA's), (Start: 15 @17460 has 3 MA's), (20, 17517), (33, 17589), (43, 17679), (45, 17685), (48, 17718),

Gene: Gspu1_22 Start: 18136, Stop: 18396, Start Num: 23

Candidate Starts for Gspu1_22:

(6, 17824), (7, 17839), (Start: 11 @18016 has 1 MA's), (23, 18136), (24, 18139), (27, 18157), (29, 18172), (36, 18205), (37, 18214), (40, 18238), (41, 18247), (47, 18301), (48, 18325), (49, 18340), (50, 18355), (51, 18364),

Gene: Heinz_23 Start: 18664, Stop: 18963, Start Num: 17

Candidate Starts for Heinz_23:

(8, 18460), (16, 18661), (Start: 17 @18664 has 5 MA's), (31, 18754), (35, 18766), (40, 18808), (45, 18853), (47, 18862), (48, 18886), (52, 18934),

Gene: Hibiscus_22 Start: 18612, Stop: 18911, Start Num: 17

Candidate Starts for Hibiscus_22:

(8, 18408), (16, 18609), (Start: 17 @18612 has 5 MA's), (31, 18702), (35, 18714), (40, 18756), (45, 18801), (47, 18810), (48, 18834), (52, 18882),

Gene: Jojo24_22 Start: 18609, Stop: 18908, Start Num: 17

Candidate Starts for Jojo24_22:

(8, 18405), (16, 18606), (Start: 17 @18609 has 5 MA's), (31, 18699), (35, 18711), (40, 18753), (45, 18798), (47, 18807), (48, 18831), (52, 18879),

Gene: Kithara_63 Start: 46188, Stop: 46532, Start Num: 11

Candidate Starts for Kithara_63:

(9, 46140), (Start: 11 @46188 has 1 MA's), (14, 46212), (24, 46290), (26, 46299), (28, 46311), (30, 46320), (32, 46329), (41, 46377), (43, 46416), (48, 46455), (49, 46470), (53, 46518),

Gene: MrSmee_23 Start: 18054, Stop: 18350, Start Num: 18

Candidate Starts for MrSmee_23:

(13, 17988), (18, 18054), (22, 18072), (38, 18165), (39, 18177), (41, 18192), (44, 18234), (46, 18240), (48, 18270),

Gene: NoSwimming_27 Start: 24549, Stop: 24818, Start Num: 22

Candidate Starts for NoSwimming_27:

(21, 24543), (22, 24549), (42, 24687), (48, 24738),

Gene: Reyja_23 Start: 18783, Stop: 19082, Start Num: 17

Candidate Starts for Reyja_23:

(1, 18126), (2, 18186), (3, 18318), (4, 18327), (5, 18501), (16, 18780), (Start: 17 @18783 has 5 MA's), (35, 18885), (40, 18927), (45, 18972), (47, 18981), (48, 19005), (52, 19053),

Gene: Santhid_22 Start: 18617, Stop: 18916, Start Num: 17

Candidate Starts for Santhid_22:

(16, 18614), (Start: 17 @18617 has 5 MA's), (35, 18719), (40, 18761), (45, 18806), (47, 18815), (48, 18839), (52, 18887),

Gene: Scotia_27 Start: 24552, Stop: 24821, Start Num: 22

Candidate Starts for Scotia_27:

(21, 24546), (22, 24552), (48, 24741),

Gene: Skitty_27 Start: 18054, Stop: 18350, Start Num: 18

Candidate Starts for Skitty_27:

(13, 17988), (18, 18054), (22, 18072), (38, 18165), (39, 18177), (41, 18192), (44, 18234), (46, 18240), (48, 18270),

Gene: Tarzan_22 Start: 18586, Stop: 18885, Start Num: 17

Candidate Starts for Tarzan_22:

(1, 17929), (2, 17989), (3, 18121), (4, 18130), (5, 18304), (16, 18583), (Start: 17 @18586 has 5 MA's), (35, 18688), (40, 18730), (45, 18775), (47, 18784), (48, 18808), (52, 18856), (54, 18877),