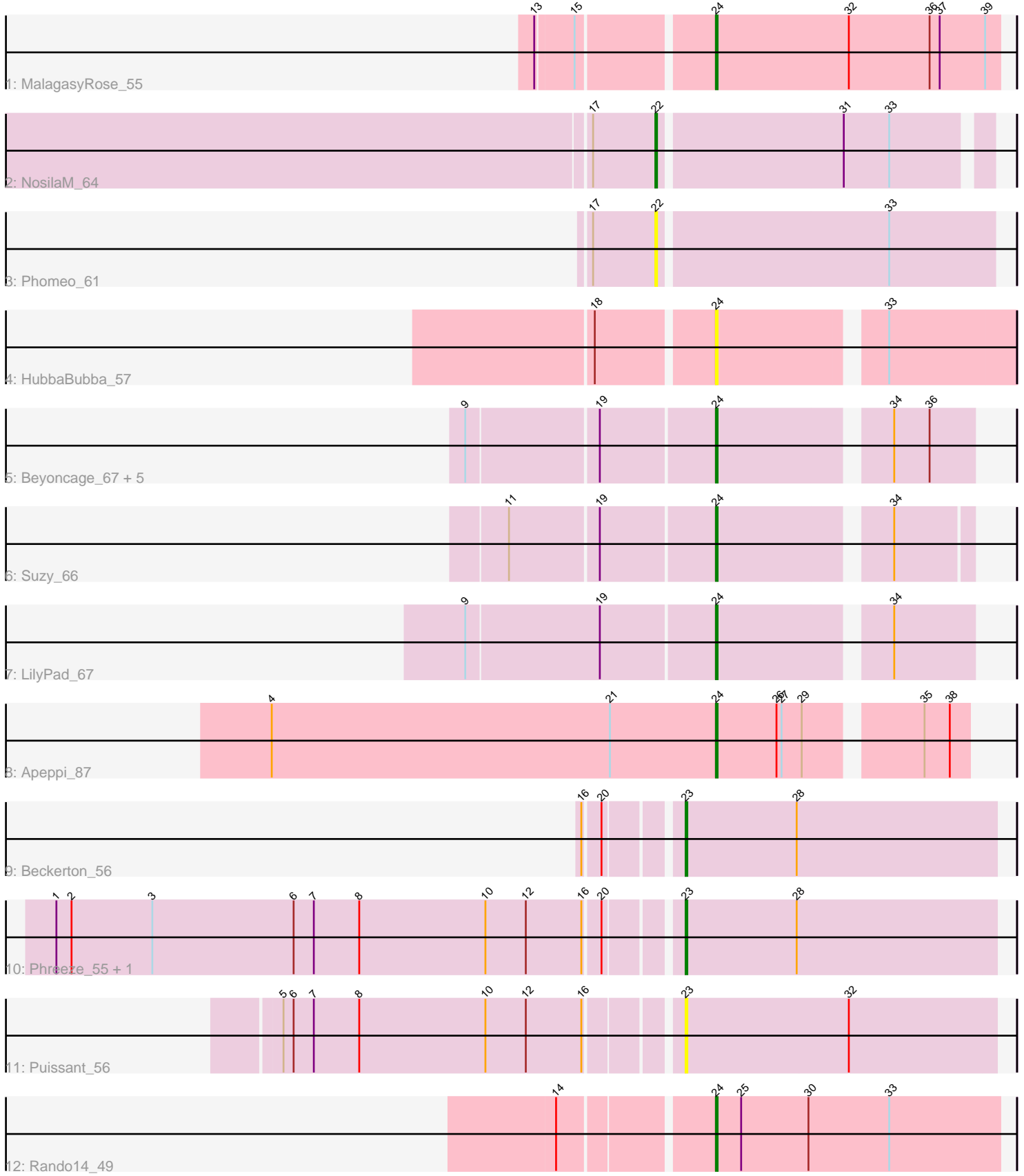


Pham 203360



Note: Tracks are now grouped by subcluster and scaled. Switching in subcluster is indicated by changes in track color. Track scale is now set by default to display the region 30 bp upstream of start 1 to 30 bp downstream of the last possible start. If this default region is judged to be packed too tightly with annotated starts, the track will be further scaled to only show that region of the ORF with annotated starts. This action will be indicated by adding "Zoomed" to the title. For starts, yellow indicates the location of called starts comprised solely of Glimmer/GeneMark auto-annotations, green indicates the location of called starts with at least 1 manual gene annotation.

Pham 203360 Report

This analysis was run 01/18/25 on database version 583.

Pham number 203360 has 18 members, 3 are drafts.

Phages represented in each track:

- Track 1 : MalagasyRose_55
- Track 2 : NosilaM_64
- Track 3 : Phomeo_61
- Track 4 : HubbaBubba_57
- Track 5 : Beyoncage_67, Terapin_68, Sienna_67, Madi_66, Djokovic_67, BiteSize_67
- Track 6 : Suzy_66
- Track 7 : LilyPad_67
- Track 8 : Apeppi_87
- Track 9 : Beckerton_56
- Track 10 : Phreeze_55, Damien_57
- Track 11 : Puissant_56
- Track 12 : Rando14_49

Summary of Final Annotations (See graph section above for start numbers):

The start number called the most often in the published annotations is 24, it was called in 11 of the 15 non-draft genes in the pham.

Genes that call this "Most Annotated" start:

- Apeppi_87, Beyoncage_67, BiteSize_67, Djokovic_67, HubbaBubba_57, LilyPad_67, Madi_66, MalagasyRose_55, Rando14_49, Sienna_67, Suzy_66, Terapin_68,

Genes that have the "Most Annotated" start but do not call it:

-

Genes that do not have the "Most Annotated" start:

- Beckerton_56, Damien_57, NosilaM_64, Phomeo_61, Phreeze_55, Puissant_56,

Summary by start number:

Start 22:

- Found in 2 of 18 (11.1%) of genes in pham

- Manual Annotations of this start: 1 of 15
- Called 100.0% of time when present
- Phage (with cluster) where this start called: NosilaM_64 (CR2), Phomeo_61 (CR2),

Start 23:

- Found in 4 of 18 (22.2%) of genes in pham
- Manual Annotations of this start: 3 of 15
- Called 100.0% of time when present
- Phage (with cluster) where this start called: Beckerton_56 (H1), Damien_57 (H1), Phreeze_55 (H1), Puissant_56 (H1),

Start 24:

- Found in 12 of 18 (66.7%) of genes in pham
- Manual Annotations of this start: 11 of 15
- Called 100.0% of time when present
- Phage (with cluster) where this start called: Apeppi_87 (DV), Beyoncage_67 (DG1), BiteSize_67 (DG1), Djokovic_67 (DG1), HubbaBubba_57 (CR4), LilyPad_67 (DG1), Madi_66 (DG1), MalagasyRose_55 (AG), Rando14_49 (K5), Sienna_67 (DG1), Suzy_66 (DG1), Terapin_68 (DG1),

Summary by clusters:

There are 7 clusters represented in this pham: CR2, CR4, AG, H1, DG1, K5, DV,

Info for manual annotations of cluster AG:

- Start number 24 was manually annotated 1 time for cluster AG.

Info for manual annotations of cluster CR2:

- Start number 22 was manually annotated 1 time for cluster CR2.

Info for manual annotations of cluster DG1:

- Start number 24 was manually annotated 8 times for cluster DG1.

Info for manual annotations of cluster DV:

- Start number 24 was manually annotated 1 time for cluster DV.

Info for manual annotations of cluster H1:

- Start number 23 was manually annotated 3 times for cluster H1.

Info for manual annotations of cluster K5:

- Start number 24 was manually annotated 1 time for cluster K5.

Gene Information:

Gene: Apeppi_87 Start: 63900, Stop: 64037, Start Num: 24

Candidate Starts for Apeppi_87:

(4, 63636), (21, 63837), (Start: 24 @63900 has 11 MA's), (26, 63936), (27, 63939), (29, 63951), (35, 64011), (38, 64026),

Gene: Beckerton_56 Start: 44938, Stop: 45120, Start Num: 23

Candidate Starts for Beckerton_56:
(16, 44890), (20, 44899), (Start: 23 @44938 has 3 MA's), (28, 45004),

Gene: Beyoncage_67 Start: 50195, Stop: 50335, Start Num: 24
Candidate Starts for Beyoncage_67:
(9, 50054), (19, 50129), (Start: 24 @50195 has 11 MA's), (34, 50288), (36, 50309),

Gene: BiteSize_67 Start: 50281, Stop: 50421, Start Num: 24
Candidate Starts for BiteSize_67:
(9, 50140), (19, 50215), (Start: 24 @50281 has 11 MA's), (34, 50374), (36, 50395),

Gene: Damien_57 Start: 44418, Stop: 44600, Start Num: 23
Candidate Starts for Damien_57:
(1, 44058), (2, 44067), (3, 44115), (6, 44199), (7, 44211), (8, 44238), (10, 44313), (12, 44337), (16, 44370), (20, 44379), (Start: 23 @44418 has 3 MA's), (28, 44484),

Gene: Djokovic_67 Start: 50194, Stop: 50334, Start Num: 24
Candidate Starts for Djokovic_67:
(9, 50053), (19, 50128), (Start: 24 @50194 has 11 MA's), (34, 50287), (36, 50308),

Gene: HubbaBubba_57 Start: 44521, Stop: 44357, Start Num: 24
Candidate Starts for HubbaBubba_57:
(18, 44587), (Start: 24 @44521 has 11 MA's), (33, 44431),

Gene: LilyPad_67 Start: 50812, Stop: 50952, Start Num: 24
Candidate Starts for LilyPad_67:
(9, 50668), (19, 50746), (Start: 24 @50812 has 11 MA's), (34, 50905),

Gene: Madi_66 Start: 50031, Stop: 50171, Start Num: 24
Candidate Starts for Madi_66:
(9, 49890), (19, 49965), (Start: 24 @50031 has 11 MA's), (34, 50124), (36, 50145),

Gene: MalagasyRose_55 Start: 38193, Stop: 38360, Start Num: 24
Candidate Starts for MalagasyRose_55:
(13, 38097), (15, 38118), (Start: 24 @38193 has 11 MA's), (32, 38271), (36, 38319), (37, 38325), (39, 38352),

Gene: NosilaM_64 Start: 49246, Stop: 49061, Start Num: 22
Candidate Starts for NosilaM_64:
(17, 49282), (Start: 22 @49246 has 1 MA's), (31, 49141), (33, 49114),

Gene: Phomeo_61 Start: 49340, Stop: 49146, Start Num: 22
Candidate Starts for Phomeo_61:
(17, 49376), (Start: 22 @49340 has 1 MA's), (33, 49208),

Gene: Phreeze_55 Start: 44015, Stop: 44197, Start Num: 23
Candidate Starts for Phreeze_55:
(1, 43655), (2, 43664), (3, 43712), (6, 43796), (7, 43808), (8, 43835), (10, 43910), (12, 43934), (16, 43967), (20, 43976), (Start: 23 @44015 has 3 MA's), (28, 44081),

Gene: Puissant_56 Start: 44115, Stop: 44297, Start Num: 23
Candidate Starts for Puissant_56:

(5, 43890), (6, 43896), (7, 43908), (8, 43935), (10, 44010), (12, 44034), (16, 44067), (Start: 23 @44115 has 3 MA's), (32, 44211),

Gene: Rando14_49 Start: 35934, Stop: 36101, Start Num: 24

Candidate Starts for Rando14_49:

(14, 35850), (Start: 24 @35934 has 11 MA's), (25, 35949), (30, 35988), (33, 36036),

Gene: Sienna_67 Start: 50272, Stop: 50412, Start Num: 24

Candidate Starts for Sienna_67:

(9, 50131), (19, 50206), (Start: 24 @50272 has 11 MA's), (34, 50365), (36, 50386),

Gene: Suzy_66 Start: 51225, Stop: 51362, Start Num: 24

Candidate Starts for Suzy_66:

(11, 51108), (19, 51159), (Start: 24 @51225 has 11 MA's), (34, 51318),

Gene: Terapin_68 Start: 50196, Stop: 50336, Start Num: 24

Candidate Starts for Terapin_68:

(9, 50055), (19, 50130), (Start: 24 @50196 has 11 MA's), (34, 50289), (36, 50310),