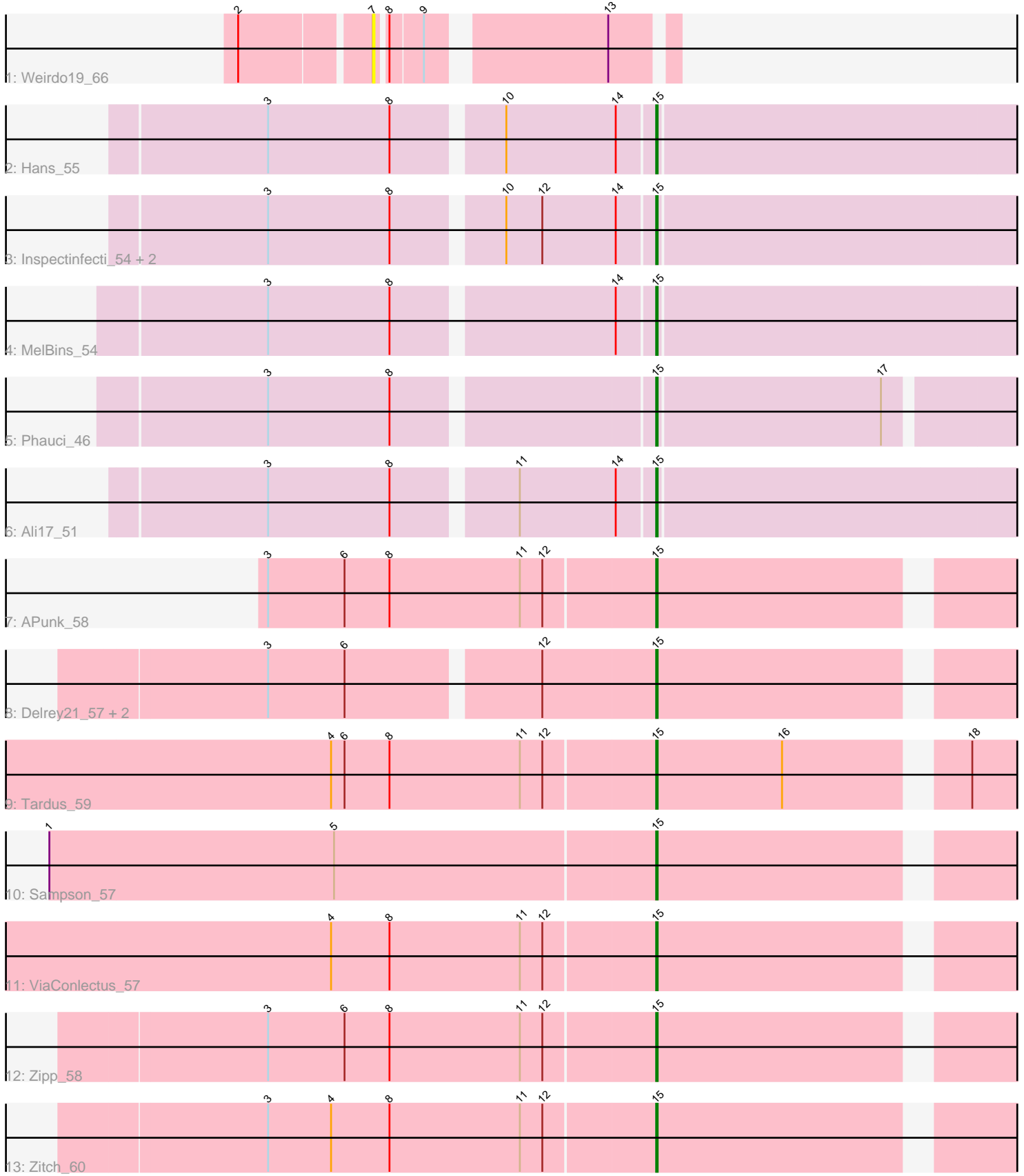


Pham 203378



Note: Tracks are now grouped by subcluster and scaled. Switching in subcluster is indicated by changes in track color. Track scale is now set by default to display the region 30 bp upstream of start 1 to 30 bp downstream of the last possible start. If this default region is judged to be packed too tightly with annotated starts, the track will be further scaled to only show that region of the ORF with annotated starts. This action will be indicated by adding "Zoomed" to the title. For starts, yellow indicates the location of called starts comprised solely of Glimmer/GeneMark auto-annotations, green indicates the location of called starts with at least 1 manual gene annotation.

## Pham 203378 Report

This analysis was run 01/18/25 on database version 583.

Pham number 203378 has 17 members, 1 are drafts.

Phages represented in each track:

- Track 1 : Weirdo19\_66
- Track 2 : Hans\_55
- Track 3 : Inspectinfecti\_54, Phinally\_53, Leonard\_53
- Track 4 : MelBins\_54
- Track 5 : Phauci\_46
- Track 6 : Ali17\_51
- Track 7 : APunk\_58
- Track 8 : Delrey21\_57, Verity\_57, DoctorFroggo\_57
- Track 9 : Tardus\_59
- Track 10 : Sampson\_57
- Track 11 : ViaConlectus\_57
- Track 12 : Zipp\_58
- Track 13 : Zitch\_60

### ***Summary of Final Annotations (See graph section above for start numbers):***

The start number called the most often in the published annotations is 15, it was called in 16 of the 16 non-draft genes in the pham.

Genes that call this "Most Annotated" start:

- APunk\_58, Ali17\_51, Delrey21\_57, DoctorFroggo\_57, Hans\_55, Inspectinfecti\_54, Leonard\_53, MelBins\_54, Phauci\_46, Phinally\_53, Sampson\_57, Tardus\_59, Verity\_57, ViaConlectus\_57, Zipp\_58, Zitch\_60,

Genes that have the "Most Annotated" start but do not call it:

- 

Genes that do not have the "Most Annotated" start:

- Weirdo19\_66,

### **Summary by start number:**

Start 7:

- Found in 1 of 17 ( 5.9% ) of genes in pham

- No Manual Annotations of this start.
- Called 100.0% of time when present
- Phage (with cluster) where this start called: Weirido19\_66 (AH),

Start 15:

- Found in 16 of 17 ( 94.1% ) of genes in pham
- Manual Annotations of this start: 16 of 16
- Called 100.0% of time when present
- Phage (with cluster) where this start called: APunk\_58 (DE4), Ali17\_51 (DE2), Delrey21\_57 (DE4), DoctorFroggo\_57 (DE4), Hans\_55 (DE2), Inspectinfecti\_54 (DE2), Leonard\_53 (DE2), MelBins\_54 (DE2), Phauci\_46 (DE2), Phinally\_53 (DE2), Sampson\_57 (DE4), Tardus\_59 (DE4), Verity\_57 (DE4), ViaConlectus\_57 (DE4), Zipp\_58 (DE4), Zitch\_60 (DE4),

### **Summary by clusters:**

There are 3 clusters represented in this pham: AH, DE2, DE4,

Info for manual annotations of cluster DE2:

- Start number 15 was manually annotated 7 times for cluster DE2.

Info for manual annotations of cluster DE4:

- Start number 15 was manually annotated 9 times for cluster DE4.

### **Gene Information:**

Gene: APunk\_58 Start: 46202, Stop: 46435, Start Num: 15

Candidate Starts for APunk\_58:

(3, 45950), (6, 46001), (8, 46031), (11, 46118), (12, 46133), (Start: 15 @46202 has 16 MA's),

Gene: Ali17\_51 Start: 44072, Stop: 44317, Start Num: 15

Candidate Starts for Ali17\_51:

(3, 43832), (8, 43913), (11, 43988), (14, 44051), (Start: 15 @44072 has 16 MA's),

Gene: Delrey21\_57 Start: 47419, Stop: 47652, Start Num: 15

Candidate Starts for Delrey21\_57:

(3, 47176), (6, 47227), (12, 47347), (Start: 15 @47419 has 16 MA's),

Gene: DoctorFroggo\_57 Start: 47419, Stop: 47652, Start Num: 15

Candidate Starts for DoctorFroggo\_57:

(3, 47176), (6, 47227), (12, 47347), (Start: 15 @47419 has 16 MA's),

Gene: Hans\_55 Start: 44712, Stop: 44963, Start Num: 15

Candidate Starts for Hans\_55:

(3, 44472), (8, 44553), (10, 44619), (14, 44691), (Start: 15 @44712 has 16 MA's),

Gene: Inspectinfecti\_54 Start: 45158, Stop: 45403, Start Num: 15

Candidate Starts for Inspectinfecti\_54:

(3, 44918), (8, 44999), (10, 45065), (12, 45089), (14, 45137), (Start: 15 @45158 has 16 MA's),

Gene: Leonard\_53 Start: 44797, Stop: 45048, Start Num: 15  
Candidate Starts for Leonard\_53:  
(3, 44557), (8, 44638), (10, 44704), (12, 44728), (14, 44776), (Start: 15 @44797 has 16 MA's),

Gene: MelBins\_54 Start: 45052, Stop: 45297, Start Num: 15  
Candidate Starts for MelBins\_54:  
(3, 44812), (8, 44893), (14, 45031), (Start: 15 @45052 has 16 MA's),

Gene: Phauci\_46 Start: 41715, Stop: 41951, Start Num: 15  
Candidate Starts for Phauci\_46:  
(3, 41475), (8, 41556), (Start: 15 @41715 has 16 MA's), (17, 41862),

Gene: Phinally\_53 Start: 44794, Stop: 45045, Start Num: 15  
Candidate Starts for Phinally\_53:  
(3, 44554), (8, 44635), (10, 44701), (12, 44725), (14, 44773), (Start: 15 @44794 has 16 MA's),

Gene: Sampson\_57 Start: 46635, Stop: 46868, Start Num: 15  
Candidate Starts for Sampson\_57:  
(1, 46236), (5, 46425), (Start: 15 @46635 has 16 MA's),

Gene: Tardus\_59 Start: 46390, Stop: 46623, Start Num: 15  
Candidate Starts for Tardus\_59:  
(4, 46180), (6, 46189), (8, 46219), (11, 46306), (12, 46321), (Start: 15 @46390 has 16 MA's), (16, 46474), (18, 46579),

Gene: Verity\_57 Start: 47419, Stop: 47652, Start Num: 15  
Candidate Starts for Verity\_57:  
(3, 47176), (6, 47227), (12, 47347), (Start: 15 @47419 has 16 MA's),

Gene: ViaConlectus\_57 Start: 45345, Stop: 45578, Start Num: 15  
Candidate Starts for ViaConlectus\_57:  
(4, 45132), (8, 45171), (11, 45258), (12, 45273), (Start: 15 @45345 has 16 MA's),

Gene: Weirido19\_66 Start: 43443, Stop: 43613, Start Num: 7  
Candidate Starts for Weirido19\_66:  
(2, 43362), (7, 43443), (8, 43449), (9, 43470), (13, 43575),

Gene: Zipp\_58 Start: 47343, Stop: 47576, Start Num: 15  
Candidate Starts for Zipp\_58:  
(3, 47091), (6, 47142), (8, 47172), (11, 47259), (12, 47274), (Start: 15 @47343 has 16 MA's),

Gene: Zitch\_60 Start: 45466, Stop: 45699, Start Num: 15  
Candidate Starts for Zitch\_60:  
(3, 45214), (4, 45256), (8, 45295), (11, 45382), (12, 45397), (Start: 15 @45466 has 16 MA's),