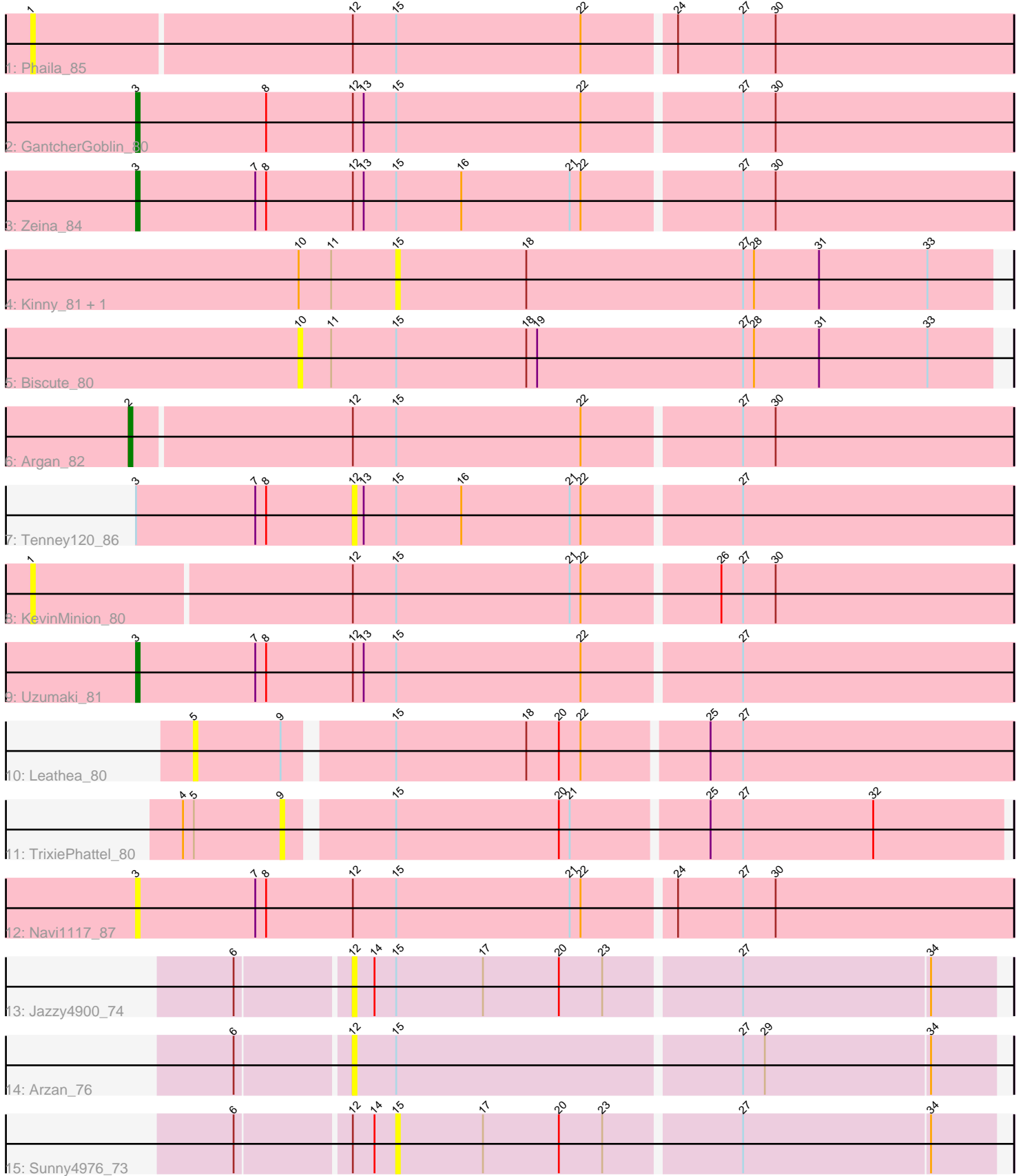


Pham 203390



Note: Tracks are now grouped by subcluster and scaled. Switching in subcluster is indicated by changes in track color. Track scale is now set by default to display the region 30 bp upstream of start 1 to 30 bp downstream of the last possible start. If this default region is judged to be packed too tightly with annotated starts, the track will be further scaled to only show that region of the ORF with annotated starts. This action will be indicated by adding "Zoomed" to the title. For starts, yellow indicates the location of called starts comprised solely of Glimmer/GeneMark auto-annotations, green indicates the location of called starts with at least 1 manual gene annotation.

Pham 203390 Report

This analysis was run 01/18/25 on database version 583.

Pham number 203390 has 16 members, 12 are drafts.

Phages represented in each track:

- Track 1 : Phaila_85
- Track 2 : GantcherGoblin_80
- Track 3 : Zeina_84
- Track 4 : Kinny_81, BarbieDoll_81
- Track 5 : Biscute_80
- Track 6 : Argan_82
- Track 7 : Tenney120_86
- Track 8 : KevinMinion_80
- Track 9 : Uzumaki_81
- Track 10 : Leathea_80
- Track 11 : TrixiePhattel_80
- Track 12 : Navi1117_87
- Track 13 : Jazzy4900_74
- Track 14 : Arzan_76
- Track 15 : Sunny4976_73

Summary of Final Annotations (See graph section above for start numbers):

The start number called the most often in the published annotations is 3, it was called in 3 of the 4 non-draft genes in the pham.

Genes that call this "Most Annotated" start:

- GantcherGoblin_80, Navi1117_87, Uzumaki_81, Zeina_84,

Genes that have the "Most Annotated" start but do not call it:

- Tenney120_86,

Genes that do not have the "Most Annotated" start:

- Argan_82, Arzan_76, BarbieDoll_81, Biscute_80, Jazzy4900_74, KevinMinion_80, Kinny_81, Leathea_80, Phaila_85, Sunny4976_73, TrixiePhattel_80,

Summary by start number:

Start 1:

- Found in 2 of 16 (12.5%) of genes in pham
- No Manual Annotations of this start.
- Called 100.0% of time when present
- Phage (with cluster) where this start called: KevinMinion_80 (AU6), Phaila_85 (AU6),

Start 2:

- Found in 1 of 16 (6.2%) of genes in pham
- Manual Annotations of this start: 1 of 4
- Called 100.0% of time when present
- Phage (with cluster) where this start called: Argan_82 (AU6),

Start 3:

- Found in 5 of 16 (31.2%) of genes in pham
- Manual Annotations of this start: 3 of 4
- Called 80.0% of time when present
- Phage (with cluster) where this start called: GantcherGoblin_80 (AU6), Navi11117_87 (AU6), Uzumaki_81 (AU6), Zeina_84 (AU6),

Start 5:

- Found in 2 of 16 (12.5%) of genes in pham
- No Manual Annotations of this start.
- Called 50.0% of time when present
- Phage (with cluster) where this start called: Leathea_80 (AU6),

Start 9:

- Found in 2 of 16 (12.5%) of genes in pham
- No Manual Annotations of this start.
- Called 50.0% of time when present
- Phage (with cluster) where this start called: TrixiePhattel_80 (AU6),

Start 10:

- Found in 3 of 16 (18.8%) of genes in pham
- No Manual Annotations of this start.
- Called 33.3% of time when present
- Phage (with cluster) where this start called: Biscute_80 (AU6),

Start 12:

- Found in 11 of 16 (68.8%) of genes in pham
- No Manual Annotations of this start.
- Called 27.3% of time when present
- Phage (with cluster) where this start called: Arzan_76 (FI), Jazzy4900_74 (FI), Tenney120_86 (AU6),

Start 15:

- Found in 16 of 16 (100.0%) of genes in pham
- No Manual Annotations of this start.
- Called 18.8% of time when present
- Phage (with cluster) where this start called: BarbieDoll_81 (AU6), Kinny_81 (AU6), Sunny4976_73 (FI),

Summary by clusters:

There are 2 clusters represented in this pham: FI, AU6,

Info for manual annotations of cluster AU6:

- Start number 2 was manually annotated 1 time for cluster AU6.
- Start number 3 was manually annotated 3 times for cluster AU6.

Gene Information:

Gene: Argan_82 Start: 48814, Stop: 49053, Start Num: 2

Candidate Starts for Argan_82:

(Start: 2 @48814 has 1 MA's), (12, 48874), (15, 48886), (22, 48937), (27, 48979), (30, 48988),

Gene: Arzan_76 Start: 48719, Stop: 48892, Start Num: 12

Candidate Starts for Arzan_76:

(6, 48689), (12, 48719), (15, 48731), (27, 48824), (29, 48830), (34, 48875),

Gene: BarbieDoll_81 Start: 48704, Stop: 48868, Start Num: 15

Candidate Starts for BarbieDoll_81:

(10, 48677), (11, 48686), (15, 48704), (18, 48740), (27, 48800), (28, 48803), (31, 48821), (33, 48851),

Gene: Biscute_80 Start: 48329, Stop: 48520, Start Num: 10

Candidate Starts for Biscute_80:

(10, 48329), (11, 48338), (15, 48356), (18, 48392), (19, 48395), (27, 48452), (28, 48455), (31, 48473), (33, 48503),

Gene: GantcherGoblin_80 Start: 48628, Stop: 48867, Start Num: 3

Candidate Starts for GantcherGoblin_80:

(Start: 3 @48628 has 3 MA's), (8, 48664), (12, 48688), (13, 48691), (15, 48700), (22, 48751), (27, 48793), (30, 48802),

Gene: Jazzy4900_74 Start: 49554, Stop: 49727, Start Num: 12

Candidate Starts for Jazzy4900_74:

(6, 49524), (12, 49554), (14, 49560), (15, 49566), (17, 49590), (20, 49611), (23, 49623), (27, 49659), (34, 49710),

Gene: KevinMinion_80 Start: 49418, Stop: 49684, Start Num: 1

Candidate Starts for KevinMinion_80:

(1, 49418), (12, 49505), (15, 49517), (21, 49565), (22, 49568), (26, 49604), (27, 49610), (30, 49619),

Gene: Kinny_81 Start: 49183, Stop: 49347, Start Num: 15

Candidate Starts for Kinny_81:

(10, 49156), (11, 49165), (15, 49183), (18, 49219), (27, 49279), (28, 49282), (31, 49300), (33, 49330),

Gene: Leathea_80 Start: 47209, Stop: 47427, Start Num: 5

Candidate Starts for Leathea_80:

(5, 47209), (9, 47233), (15, 47260), (18, 47296), (20, 47305), (22, 47311), (25, 47344), (27, 47353),

Gene: Navi1117_87 Start: 50186, Stop: 50425, Start Num: 3

Candidate Starts for Navi1117_87:

(Start: 3 @50186 has 3 MA's), (7, 50219), (8, 50222), (12, 50246), (15, 50258), (21, 50306), (22, 50309), (24, 50333), (27, 50351), (30, 50360),

Gene: Phaila_85 Start: 49012, Stop: 49278, Start Num: 1

Candidate Starts for Phaila_85:

(1, 49012), (12, 49099), (15, 49111), (22, 49162), (24, 49186), (27, 49204), (30, 49213),

Gene: Sunny4976_73 Start: 49566, Stop: 49727, Start Num: 15

Candidate Starts for Sunny4976_73:

(6, 49524), (12, 49554), (14, 49560), (15, 49566), (17, 49590), (20, 49611), (23, 49623), (27, 49659), (34, 49710),

Gene: Tenney120_86 Start: 49737, Stop: 49916, Start Num: 12

Candidate Starts for Tenney120_86:

(Start: 3 @49677 has 3 MA's), (7, 49710), (8, 49713), (12, 49737), (13, 49740), (15, 49749), (16, 49767), (21, 49797), (22, 49800), (27, 49842),

Gene: TrixiePhattel_80 Start: 47398, Stop: 47589, Start Num: 9

Candidate Starts for TrixiePhattel_80:

(4, 47371), (5, 47374), (9, 47398), (15, 47425), (20, 47470), (21, 47473), (25, 47509), (27, 47518), (32, 47554),

Gene: Uzumaki_81 Start: 48596, Stop: 48835, Start Num: 3

Candidate Starts for Uzumaki_81:

(Start: 3 @48596 has 3 MA's), (7, 48629), (8, 48632), (12, 48656), (13, 48659), (15, 48668), (22, 48719), (27, 48761),

Gene: Zeina_84 Start: 48968, Stop: 49207, Start Num: 3

Candidate Starts for Zeina_84:

(Start: 3 @48968 has 3 MA's), (7, 49001), (8, 49004), (12, 49028), (13, 49031), (15, 49040), (16, 49058), (21, 49088), (22, 49091), (27, 49133), (30, 49142),