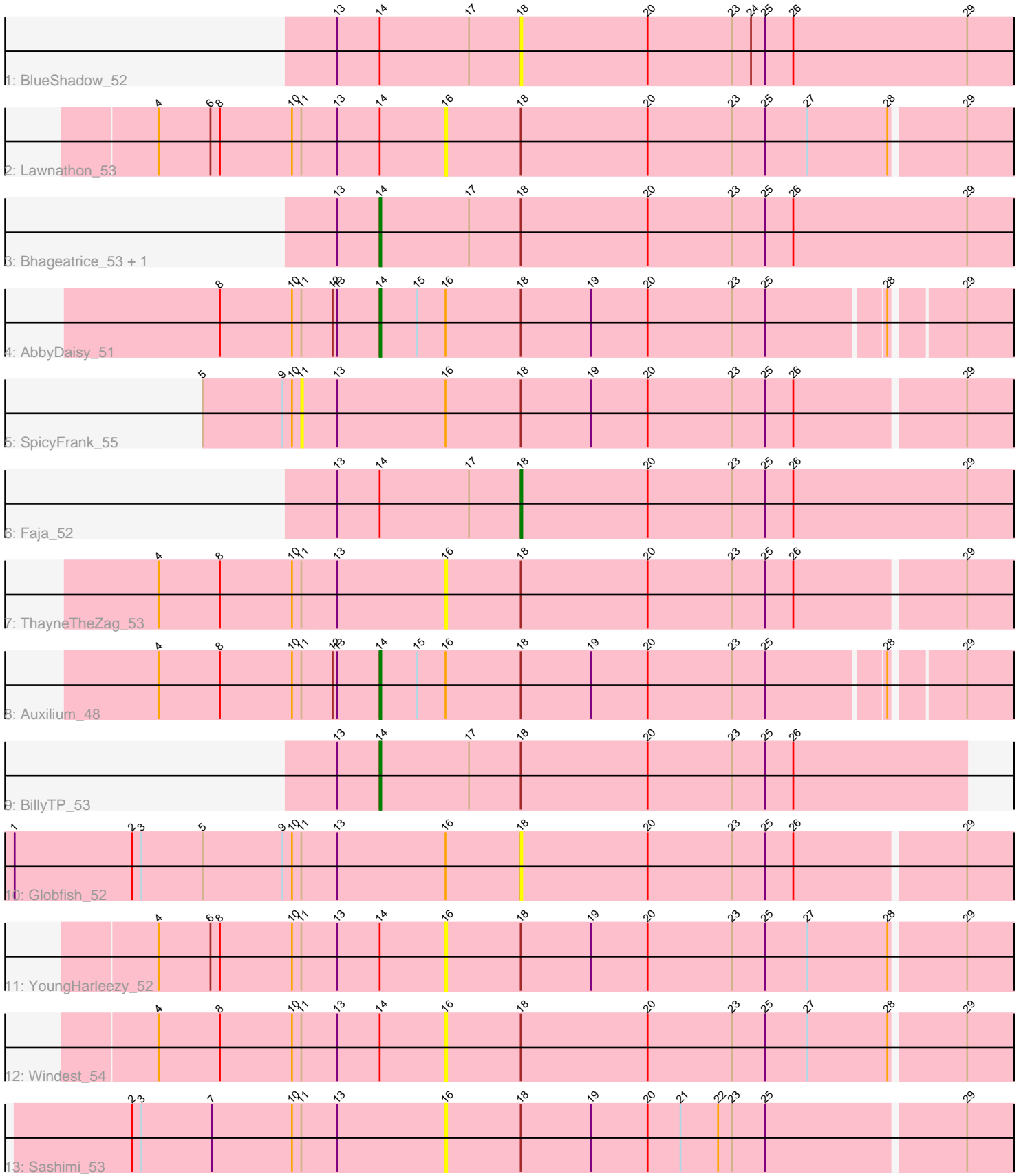


# Pham 203435



Note: Tracks are now grouped by subcluster and scaled. Switching in subcluster is indicated by changes in track color. Track scale is now set by default to display the region 30 bp upstream of start 1 to 30 bp downstream of the last possible start. If this default region is judged to be packed too tightly with annotated starts, the track will be further scaled to only show that region of the ORF with annotated starts. This action will be indicated by adding "Zoomed" to the title. For starts, yellow indicates the location of called starts comprised solely of Glimmer/GeneMark auto-annotations, green indicates the location of called starts with at least 1 manual gene annotation.

## Pham 203435 Report

This analysis was run 01/18/25 on database version 583.

Pham number 203435 has 14 members, 9 are drafts.

Phages represented in each track:

- Track 1 : BlueShadow\_52
- Track 2 : Lawnathon\_53
- Track 3 : Bhageatrice\_53, BenchScraper\_50
- Track 4 : AbbyDaisy\_51
- Track 5 : SpicyFrank\_55
- Track 6 : Faja\_52
- Track 7 : ThayneTheZag\_53
- Track 8 : Auxilium\_48
- Track 9 : BillyTP\_53
- Track 10 : Globfish\_52
- Track 11 : YoungHarleezy\_52
- Track 12 : Windest\_54
- Track 13 : Sashimi\_53

### ***Summary of Final Annotations (See graph section above for start numbers):***

The start number called the most often in the published annotations is 14, it was called in 4 of the 5 non-draft genes in the pham.

Genes that call this "Most Annotated" start:

- AbbyDaisy\_51, Auxilium\_48, BenchScraper\_50, Bhageatrice\_53, BillyTP\_53,

Genes that have the "Most Annotated" start but do not call it:

- BlueShadow\_52, Faja\_52, Lawnathon\_53, Windest\_54, YoungHarleezy\_52,

Genes that do not have the "Most Annotated" start:

- Globfish\_52, Sashimi\_53, SpicyFrank\_55, ThayneTheZag\_53,

### **Summary by start number:**

Start 11:

- Found in 9 of 14 ( 64.3% ) of genes in pham
- No Manual Annotations of this start.
- Called 11.1% of time when present

- Phage (with cluster) where this start called: SpicyFrank\_55 (AY),

Start 14:

- Found in 10 of 14 ( 71.4% ) of genes in pham
- Manual Annotations of this start: 4 of 5
- Called 50.0% of time when present
- Phage (with cluster) where this start called: AbbyDaisy\_51 (AY), Auxilium\_48 (AY), BenchScraper\_50 (AY), Bhageatrice\_53 (AY), BillyTP\_53 (AY),

Start 16:

- Found in 9 of 14 ( 64.3% ) of genes in pham
- No Manual Annotations of this start.
- Called 55.6% of time when present
- Phage (with cluster) where this start called: Lawnathon\_53 (AY), Sashimi\_53 (AY), ThayneTheZag\_53 (AY), Windest\_54 (AY), YoungHarleezy\_52 (AY),

Start 18:

- Found in 14 of 14 ( 100.0% ) of genes in pham
- Manual Annotations of this start: 1 of 5
- Called 21.4% of time when present
- Phage (with cluster) where this start called: BlueShadow\_52 (AY), Faja\_52 (AY), Globfish\_52 (AY),

### **Summary by clusters:**

There is one cluster represented in this pham: AY

Info for manual annotations of cluster AY:

- Start number 14 was manually annotated 4 times for cluster AY.
- Start number 18 was manually annotated 1 time for cluster AY.

### **Gene Information:**

Gene: AbbyDaisy\_51 Start: 32246, Stop: 31803, Start Num: 14

Candidate Starts for AbbyDaisy\_51:

(8, 32345), (10, 32300), (11, 32294), (12, 32276), (13, 32273), (Start: 14 @32246 has 4 MA's), (15, 32222), (16, 32204), (Start: 18 @32156 has 1 MA's), (19, 32111), (20, 32075), (23, 32021), (25, 32000), (28, 31928), (29, 31886),

Gene: Auxilium\_48 Start: 29517, Stop: 29074, Start Num: 14

Candidate Starts for Auxilium\_48:

(4, 29655), (8, 29616), (10, 29571), (11, 29565), (12, 29547), (13, 29544), (Start: 14 @29517 has 4 MA's), (15, 29493), (16, 29475), (Start: 18 @29427 has 1 MA's), (19, 29382), (20, 29346), (23, 29292), (25, 29271), (28, 29199), (29, 29157),

Gene: BenchScraper\_50 Start: 31282, Stop: 30824, Start Num: 14

Candidate Starts for BenchScraper\_50:

(13, 31309), (Start: 14 @31282 has 4 MA's), (17, 31225), (Start: 18 @31192 has 1 MA's), (20, 31111), (23, 31057), (25, 31036), (26, 31018), (29, 30907),

Gene: Bhageatrice\_53 Start: 33355, Stop: 32897, Start Num: 14

Candidate Starts for Bhageatrice\_53:

(13, 33382), (Start: 14 @33355 has 4 MA's), (17, 33298), (Start: 18 @33265 has 1 MA's), (20, 33184), (23, 33130), (25, 33109), (26, 33091), (29, 32980),

Gene: BillyTP\_53 Start: 33153, Stop: 32779, Start Num: 14

Candidate Starts for BillyTP\_53:

(13, 33180), (Start: 14 @33153 has 4 MA's), (17, 33096), (Start: 18 @33063 has 1 MA's), (20, 32982), (23, 32928), (25, 32907), (26, 32889),

Gene: BlueShadow\_52 Start: 31853, Stop: 31485, Start Num: 18

Candidate Starts for BlueShadow\_52:

(13, 31970), (Start: 14 @31943 has 4 MA's), (17, 31886), (Start: 18 @31853 has 1 MA's), (20, 31772), (23, 31718), (24, 31706), (25, 31697), (26, 31679), (29, 31568),

Gene: Faja\_52 Start: 33031, Stop: 32663, Start Num: 18

Candidate Starts for Faja\_52:

(13, 33148), (Start: 14 @33121 has 4 MA's), (17, 33064), (Start: 18 @33031 has 1 MA's), (20, 32950), (23, 32896), (25, 32875), (26, 32857), (29, 32746),

Gene: Globfish\_52 Start: 31948, Stop: 31586, Start Num: 18

Candidate Starts for Globfish\_52:

(1, 32269), (2, 32194), (3, 32188), (5, 32149), (9, 32098), (10, 32092), (11, 32086), (13, 32065), (16, 31996), (Start: 18 @31948 has 1 MA's), (20, 31867), (23, 31813), (25, 31792), (26, 31774), (29, 31669),

Gene: Lawnathon\_53 Start: 32055, Stop: 31645, Start Num: 16

Candidate Starts for Lawnathon\_53:

(4, 32235), (6, 32202), (8, 32196), (10, 32151), (11, 32145), (13, 32124), (Start: 14 @32097 has 4 MA's), (16, 32055), (Start: 18 @32007 has 1 MA's), (20, 31926), (23, 31872), (25, 31851), (27, 31824), (28, 31773), (29, 31728),

Gene: Sashimi\_53 Start: 32834, Stop: 32424, Start Num: 16

Candidate Starts for Sashimi\_53:

(2, 33032), (3, 33026), (7, 32981), (10, 32930), (11, 32924), (13, 32903), (16, 32834), (Start: 18 @32786 has 1 MA's), (19, 32741), (20, 32705), (21, 32684), (22, 32660), (23, 32651), (25, 32630), (29, 32507),

Gene: SpicyFrank\_55 Start: 32769, Stop: 32269, Start Num: 11

Candidate Starts for SpicyFrank\_55:

(5, 32832), (9, 32781), (10, 32775), (11, 32769), (13, 32748), (16, 32679), (Start: 18 @32631 has 1 MA's), (19, 32586), (20, 32550), (23, 32496), (25, 32475), (26, 32457), (29, 32352),

Gene: ThayneTheZag\_53 Start: 31675, Stop: 31265, Start Num: 16

Candidate Starts for ThayneTheZag\_53:

(4, 31855), (8, 31816), (10, 31771), (11, 31765), (13, 31744), (16, 31675), (Start: 18 @31627 has 1 MA's), (20, 31546), (23, 31492), (25, 31471), (26, 31453), (29, 31348),

Gene: Windest\_54 Start: 30760, Stop: 30350, Start Num: 16

Candidate Starts for Windest\_54:

(4, 30940), (8, 30901), (10, 30856), (11, 30850), (13, 30829), (Start: 14 @30802 has 4 MA's), (16, 30760), (Start: 18 @30712 has 1 MA's), (20, 30631), (23, 30577), (25, 30556), (27, 30529), (28, 30478), (29, 30433),

Gene: YoungHarleezy\_52 Start: 32065, Stop: 31655, Start Num: 16

Candidate Starts for YoungHarleezy\_52:

(4, 32245), (6, 32212), (8, 32206), (10, 32161), (11, 32155), (13, 32134), (Start: 14 @32107 has 4 MA's), (16, 32065), (Start: 18 @32017 has 1 MA's), (19, 31972), (20, 31936), (23, 31882), (25, 31861), (27, 31834), (28, 31783), (29, 31738),