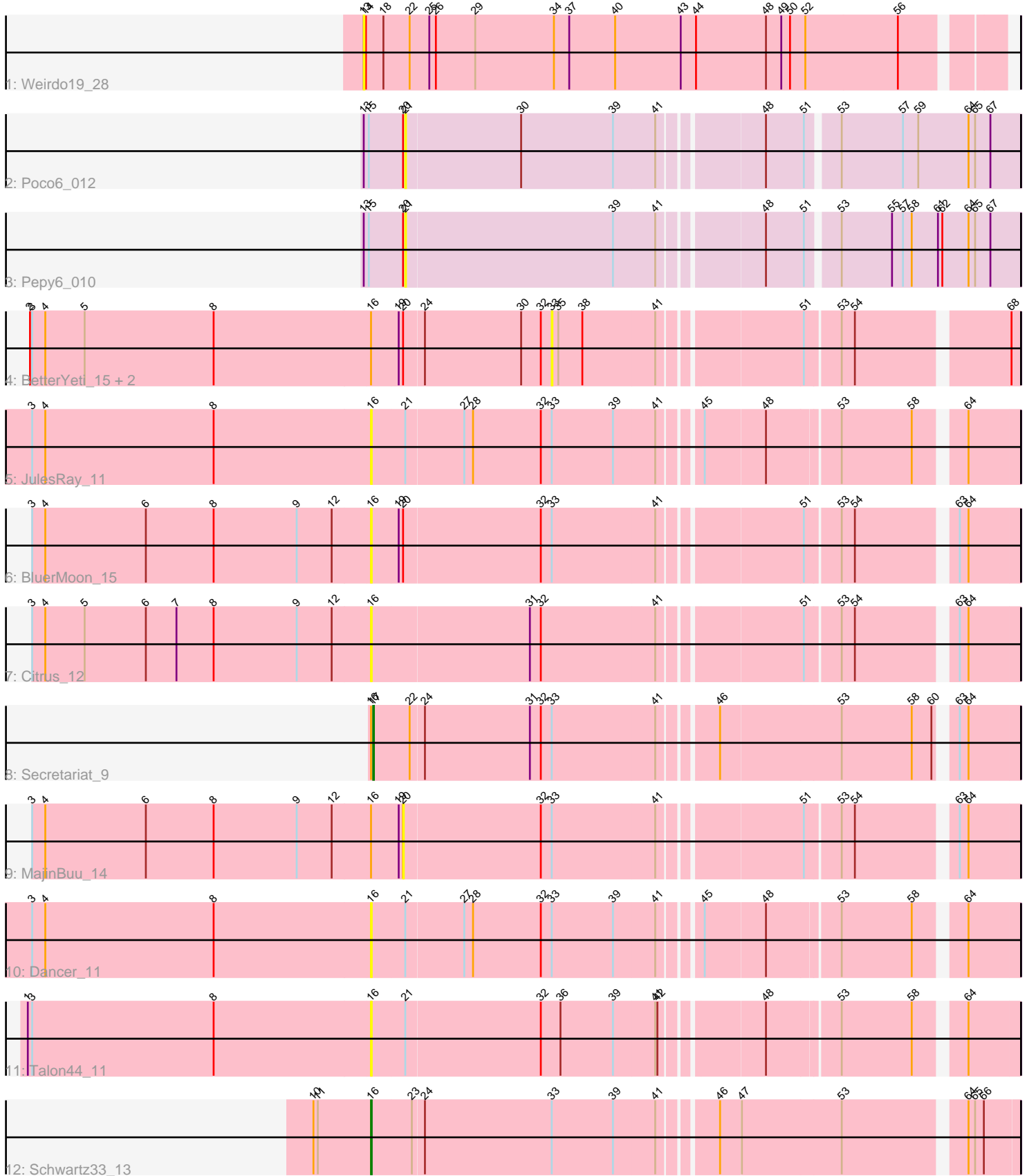


Pham 203437



Note: Tracks are now grouped by subcluster and scaled. Switching in subcluster is indicated by changes in track color. Track scale is now set by default to display the region 30 bp upstream of start 1 to 30 bp downstream of the last possible start. If this default region is judged to be packed too tightly with annotated starts, the track will be further scaled to only show that region of the ORF with annotated starts. This action will be indicated by adding "Zoomed" to the title. For starts, yellow indicates the location of called starts comprised solely of Glimmer/GeneMark auto-annotations, green indicates the location of called starts with at least 1 manual gene annotation.

## Pham 203437 Report

This analysis was run 01/18/25 on database version 583.

Pham number 203437 has 14 members, 12 are drafts.

Phages represented in each track:

- Track 1 : Weirdo19\_28
- Track 2 : POCO6\_012
- Track 3 : PEPY6\_010
- Track 4 : BetterYeti\_15, GUSICORN\_15, SHAGGYROGERS\_16
- Track 5 : JulesRay\_11
- Track 6 : BLUERMOON\_15
- Track 7 : Citrus\_12
- Track 8 : Secretariat\_9
- Track 9 : MajinBuu\_14
- Track 10 : Dancer\_11
- Track 11 : Talon44\_11
- Track 12 : Schwartz33\_13

### ***Summary of Final Annotations (See graph section above for start numbers):***

The start number called the most often in the published annotations is 17, it was called in 1 of the 2 non-draft genes in the pham.

Genes that call this "Most Annotated" start:

- Secretariat\_9,

Genes that have the "Most Annotated" start but do not call it:

- 

Genes that do not have the "Most Annotated" start:

- BetterYeti\_15, BLUERMOON\_15, Citrus\_12, Dancer\_11, GUSICORN\_15, JulesRay\_11, MajinBuu\_14, PEPY6\_010, POCO6\_012, Schwartz33\_13, SHAGGYROGERS\_16, Talon44\_11, Weirdo19\_28,

### **Summary by start number:**

Start 13:

- Found in 3 of 14 ( 21.4% ) of genes in pham
- No Manual Annotations of this start.

- Called 33.3% of time when present
- Phage (with cluster) where this start called: Weirido19\_28 (AH),

Start 16:

- Found in 11 of 14 ( 78.6% ) of genes in pham
- Manual Annotations of this start: 1 of 2
- Called 54.5% of time when present
- Phage (with cluster) where this start called: BluerMoon\_15 (DJ), Citrus\_12 (DJ), Dancer\_11 (DJ), JulesRay\_11 (DJ), Schwartz33\_13 (DJ), Talon44\_11 (DJ),

Start 17:

- Found in 1 of 14 ( 7.1% ) of genes in pham
- Manual Annotations of this start: 1 of 2
- Called 100.0% of time when present
- Phage (with cluster) where this start called: Secretariat\_9 (DJ),

Start 20:

- Found in 7 of 14 ( 50.0% ) of genes in pham
- No Manual Annotations of this start.
- Called 14.3% of time when present
- Phage (with cluster) where this start called: MajinBuu\_14 (DJ),

Start 21:

- Found in 5 of 14 ( 35.7% ) of genes in pham
- No Manual Annotations of this start.
- Called 40.0% of time when present
- Phage (with cluster) where this start called: Pepy6\_010 (CC), Poco6\_012 (CC),

Start 33:

- Found in 9 of 14 ( 64.3% ) of genes in pham
- No Manual Annotations of this start.
- Called 33.3% of time when present
- Phage (with cluster) where this start called: BetterYeti\_15 (DJ), Gusicorn\_15 (DJ), ShaggyRogers\_16 (DJ),

### **Summary by clusters:**

There are 3 clusters represented in this pham: CC, AH, DJ,

Info for manual annotations of cluster DJ:

- Start number 16 was manually annotated 1 time for cluster DJ.
- Start number 17 was manually annotated 1 time for cluster DJ.

### **Gene Information:**

Gene: BetterYeti\_15 Start: 7148, Stop: 7729, Start Num: 33

Candidate Starts for BetterYeti\_15:

(2, 6440), (3, 6443), (4, 6461), (5, 6515), (8, 6692), (Start: 16 @6905 has 1 MA's), (19, 6941), (20, 6947), (24, 6974), (30, 7106), (32, 7133), (33, 7148), (35, 7157), (38, 7190), (41, 7286), (51, 7463), (53,

7508), (54, 7526), (68, 7718),

Gene: BluerMoon\_15 Start: 7109, Stop: 7933, Start Num: 16

Candidate Starts for BluerMoon\_15:

(3, 6647), (4, 6665), (6, 6803), (8, 6896), (9, 7010), (12, 7058), (Start: 16 @7109 has 1 MA's), (19, 7145), (20, 7151), (32, 7337), (33, 7352), (41, 7490), (51, 7667), (53, 7712), (54, 7730), (63, 7853), (64, 7865),

Gene: Citrus\_12 Start: 7112, Stop: 7936, Start Num: 16

Candidate Starts for Citrus\_12:

(3, 6650), (4, 6668), (5, 6722), (6, 6806), (7, 6848), (8, 6899), (9, 7013), (12, 7061), (Start: 16 @7112 has 1 MA's), (31, 7325), (32, 7340), (41, 7493), (51, 7670), (53, 7715), (54, 7733), (63, 7856), (64, 7868),

Gene: Dancer\_11 Start: 3970, Stop: 4791, Start Num: 16

Candidate Starts for Dancer\_11:

(3, 3508), (4, 3526), (8, 3757), (Start: 16 @3970 has 1 MA's), (21, 4015), (27, 4093), (28, 4105), (32, 4198), (33, 4213), (39, 4297), (41, 4351), (45, 4396), (48, 4477), (53, 4570), (58, 4666), (64, 4723),

Gene: Gusicorn\_15 Start: 7148, Stop: 7729, Start Num: 33

Candidate Starts for Gusicorn\_15:

(2, 6440), (3, 6443), (4, 6461), (5, 6515), (8, 6692), (Start: 16 @6905 has 1 MA's), (19, 6941), (20, 6947), (24, 6974), (30, 7106), (32, 7133), (33, 7148), (35, 7157), (38, 7190), (41, 7286), (51, 7463), (53, 7508), (54, 7526), (68, 7718),

Gene: JulesRay\_11 Start: 4264, Stop: 5085, Start Num: 16

Candidate Starts for JulesRay\_11:

(3, 3802), (4, 3820), (8, 4051), (Start: 16 @4264 has 1 MA's), (21, 4309), (27, 4387), (28, 4399), (32, 4492), (33, 4507), (39, 4591), (41, 4645), (45, 4690), (48, 4771), (53, 4864), (58, 4960), (64, 5017),

Gene: MajinBuu\_14 Start: 7152, Stop: 7934, Start Num: 20

Candidate Starts for MajinBuu\_14:

(3, 6648), (4, 6666), (6, 6804), (8, 6897), (9, 7011), (12, 7059), (Start: 16 @7110 has 1 MA's), (19, 7146), (20, 7152), (32, 7338), (33, 7353), (41, 7491), (51, 7668), (53, 7713), (54, 7731), (63, 7854), (64, 7866),

Gene: Pepy6\_010 Start: 9009, Stop: 9806, Start Num: 21

Candidate Starts for Pepy6\_010:

(13, 8955), (15, 8961), (20, 9006), (21, 9009), (39, 9291), (41, 9345), (48, 9471), (51, 9522), (53, 9561), (55, 9630), (57, 9645), (58, 9657), (61, 9693), (62, 9699), (64, 9735), (65, 9744), (67, 9765),

Gene: Poco6\_012 Start: 12440, Stop: 13237, Start Num: 21

Candidate Starts for Poco6\_012:

(13, 12386), (15, 12392), (20, 12437), (21, 12440), (30, 12596), (39, 12722), (41, 12776), (48, 12902), (51, 12953), (53, 12992), (57, 13076), (59, 13097), (64, 13166), (65, 13175), (67, 13196),

Gene: Schwartz33\_13 Start: 6686, Stop: 7513, Start Num: 16

Candidate Starts for Schwartz33\_13:

(10, 6608), (11, 6614), (Start: 16 @6686 has 1 MA's), (23, 6740), (24, 6755), (33, 6929), (39, 7013), (41, 7067), (46, 7133), (47, 7160), (53, 7295), (64, 7448), (65, 7457), (66, 7469),

Gene: Secretariat\_9 Start: 4290, Stop: 5117, Start Num: 17

Candidate Starts for Secretariat\_9:

(Start: 16 @4287 has 1 MA's), (Start: 17 @4290 has 1 MA's), (22, 4338), (24, 4356), (31, 4500), (32, 4515), (33, 4530), (41, 4668), (46, 4734), (53, 4896), (58, 4992), (60, 5019), (63, 5037), (64, 5049),

Gene: ShaggyRogers\_16 Start: 7147, Stop: 7728, Start Num: 33

Candidate Starts for ShaggyRogers\_16:

(2, 6439), (3, 6442), (4, 6460), (5, 6514), (8, 6691), (Start: 16 @6904 has 1 MA's), (19, 6940), (20, 6946), (24, 6973), (30, 7105), (32, 7132), (33, 7147), (35, 7156), (38, 7189), (41, 7285), (51, 7462), (53, 7507), (54, 7525), (68, 7717),

Gene: Talon44\_11 Start: 4468, Stop: 5289, Start Num: 16

Candidate Starts for Talon44\_11:

(1, 4000), (3, 4006), (8, 4255), (Start: 16 @4468 has 1 MA's), (21, 4513), (32, 4696), (36, 4723), (39, 4795), (41, 4849), (42, 4852), (48, 4975), (53, 5068), (58, 5164), (64, 5221),

Gene: Weirido19\_28 Start: 25821, Stop: 26675, Start Num: 13

Candidate Starts for Weirido19\_28:

(13, 25821), (14, 25824), (18, 25848), (22, 25884), (25, 25911), (26, 25920), (29, 25974), (34, 26082), (37, 26103), (40, 26166), (43, 26256), (44, 26277), (48, 26373), (49, 26394), (50, 26406), (52, 26427), (56, 26553),