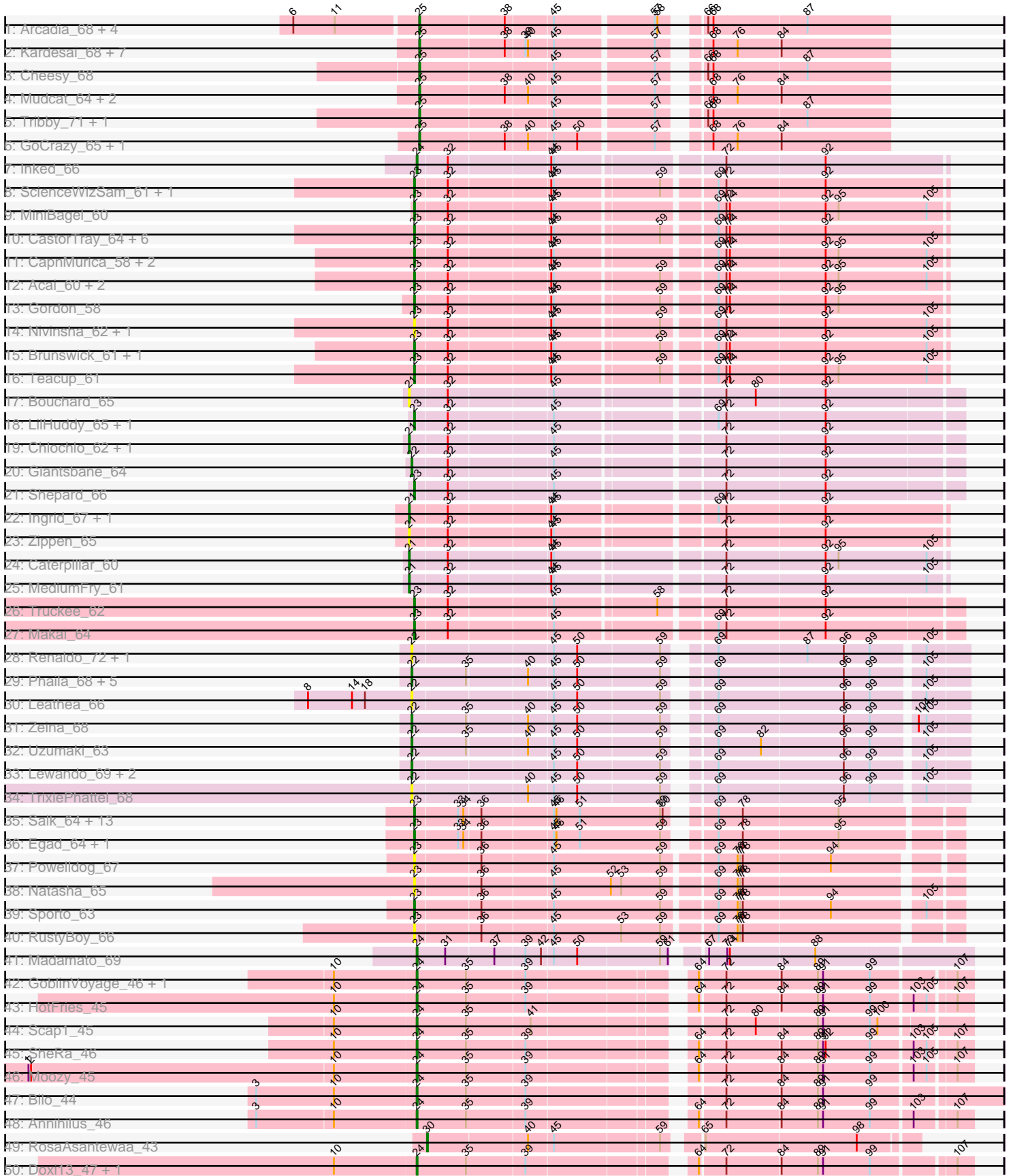
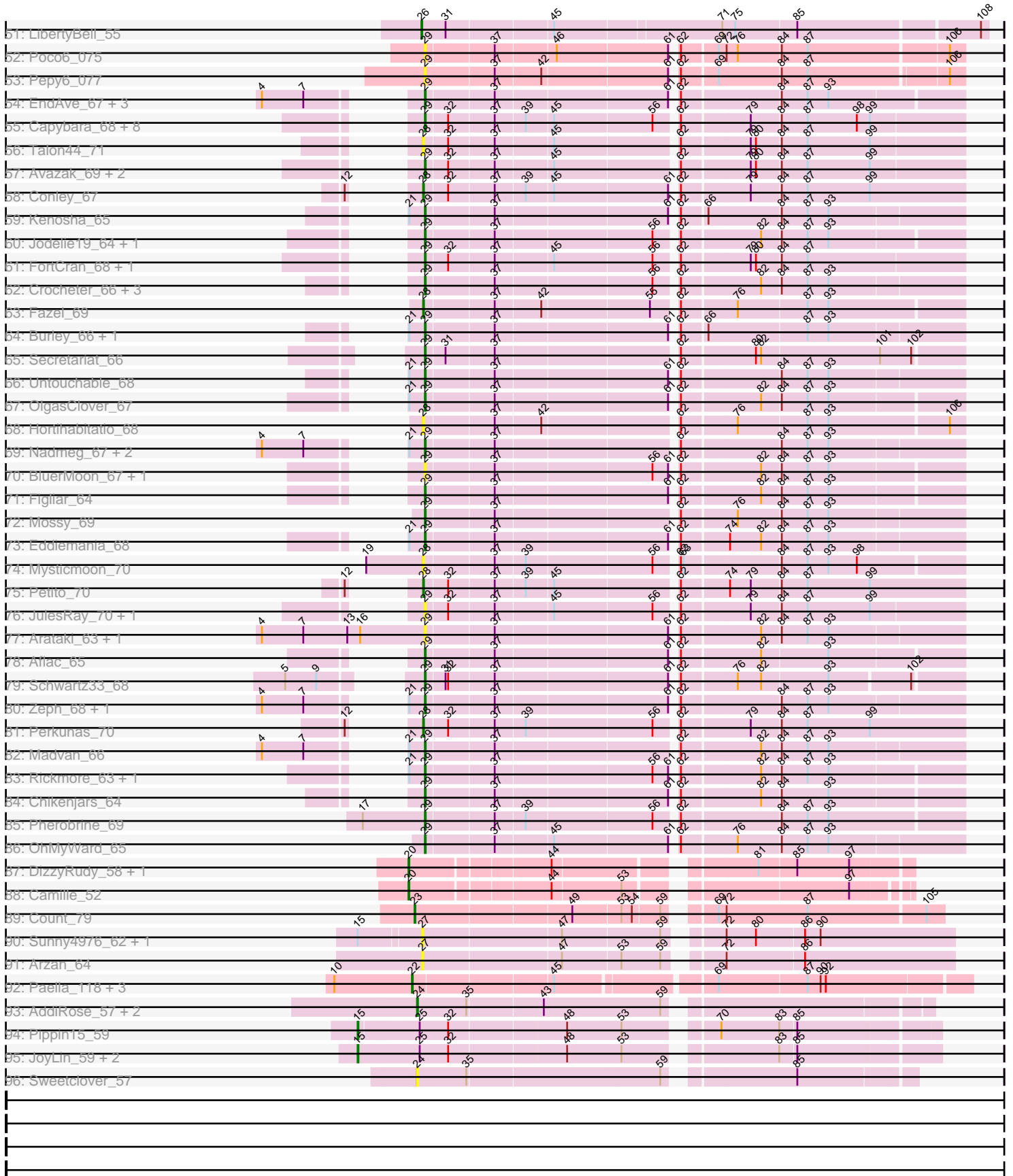


Pham 204821



Pham 204821



Note: Tracks are now grouped by subcluster and scaled. Switching in subcluster is indicated by changes in track color. Track scale is now set by default to display the region 30 bp upstream of start 1 to 30 bp downstream of the last possible start. If this default region is judged to be packed too tightly with annotated starts, the track will be further scaled to only show that region of the ORF with annotated starts. This action will be indicated by adding "Zoomed" to the title. For starts, yellow indicates the location of called starts comprised solely of Glimmer/GeneMark auto-annotations, green indicates the location of called starts with at least 1 manual gene annotation.

Pham 204821 Report

This analysis was run 02/22/25 on database version 588.

Pham number 204821 has 186 members, 49 are drafts.

Phages represented in each track:

- Track 1 : Arcadia_68, Nason_68, Elsa_68, Xenomorph_64, Bowling_68
- Track 2 : Kardesai_68, Dynamite_68, NapoleonB_69, Hankly_67, Benllo_68, Mooshroom_69, Circum_69, BenitoAntonio_66
- Track 3 : Cheesy_68
- Track 4 : Mudcat_64, Heisenberger_67, JEGGS_67
- Track 5 : Tribby_71, Correa_66
- Track 6 : GoCrazy_65, KeaneyLin_64
- Track 7 : Inked_66
- Track 8 : ScienceWizSam_61, Synopsis_59
- Track 9 : MiniBagel_60
- Track 10 : CastorTray_64, Breylor17_60, Nightmare_62, DevitoJr_60, Tatanka_57, Trustiboi_60, Darby_59
- Track 11 : CapnMurica_58, Tenno_61, Issa_61
- Track 12 : Acai_60, Niktson_60, ElephantMan_60
- Track 13 : Gordon_58
- Track 14 : Nivinsha_62, AreFloNak_63
- Track 15 : Brunswick_61, LucySwiss_61
- Track 16 : Teacup_61
- Track 17 : Bouchard_65
- Track 18 : LilHuddy_65, Tokki_69
- Track 19 : Chlochlo_62, Phaby_66
- Track 20 : Giantsbane_64
- Track 21 : Shepard_66
- Track 22 : Ingrid_67, Loretta_64
- Track 23 : Zippen_65
- Track 24 : Caterpillar_60
- Track 25 : MediumFry_61
- Track 26 : Truckee_62
- Track 27 : Makai_64
- Track 28 : Renaldo_72, BarbieDoll_70
- Track 29 : Phaila_68, Tenney120_69, GantcherGoblin_64, Argan_63, Navi1117_69, KevinMinion_65
- Track 30 : Leathea_66
- Track 31 : Zeina_68
- Track 32 : Uzumaki_63
- Track 33 : Lewando_69, Biscute_69, Kinny_70
- Track 34 : TrixiePhattel_68

- Track 35 : Salk_64, Raunak_65, Boog_64, Michelle_64, Shiba_63, MrAaronian_64, DoctorPepper_63, Sloopyjoe_64, Linda_64, HerbBucket_62, Djungelskog_63, Stayer_64, BronxBay_64, StarLord_64
- Track 36 : Egad_64, ProfFrink_64
- Track 37 : PowellDog_67
- Track 38 : Natasha_65
- Track 39 : Sporto_63
- Track 40 : RustyBoy_66
- Track 41 : Madamoto_69
- Track 42 : GoblinVoyage_46, PherryCruz_45
- Track 43 : HotFries_45
- Track 44 : Scap1_45
- Track 45 : SheRa_46
- Track 46 : Moozy_45
- Track 47 : Bilo_44
- Track 48 : Annihilus_46
- Track 49 : RosaAsantewaa_43
- Track 50 : Doxi13_47, RavenPuff_46
- Track 51 : LibertyBell_55
- Track 52 : Poco6_075
- Track 53 : Pepy6_077
- Track 54 : EndAve_67, Nithya_66, AlainaMarie_65, Citrus_66
- Track 55 : Capybara_68, Tanis_68, Magel_69, Kerry_67, Gravy_67, Roney_68, Odesza_67, Dancer_70, Gill_68
- Track 56 : Talon44_71
- Track 57 : Avazak_69, Captrips_67, NoPickles_67
- Track 58 : Conley_67
- Track 59 : Kenosha_65
- Track 60 : Jodelie19_64, TenaciousP_66
- Track 61 : FortCran_68, Artorias_68
- Track 62 : Crocheter_66, BetterYeti_68, ShaggyRogers_69, Gusicorn_68
- Track 63 : Fazel_69
- Track 64 : Burley_66, Phepper_67
- Track 65 : Secretariat_66
- Track 66 : Untouchable_68
- Track 67 : OlgasClover_67
- Track 68 : Hortihabitatio_68
- Track 69 : Nadmeg_67, Vardy_65, Runhaar_66
- Track 70 : BluerMoon_67, MajinBuu_67
- Track 71 : Figliar_64
- Track 72 : Mossy_69
- Track 73 : Eddiemania_68
- Track 74 : Mysticmoon_70
- Track 75 : Petito_70
- Track 76 : JulesRay_70, Trufflozitus_72
- Track 77 : Arataki_63, Demure_64
- Track 78 : Aflac_65
- Track 79 : Schwartz33_68
- Track 80 : Zeph_68, Hydrus_68
- Track 81 : Perkunas_70
- Track 82 : Madvan_66
- Track 83 : Rickmore_63, Duffington_64
- Track 84 : Chikenjars_64

- Track 85 : Pherobrine_69
- Track 86 : OhMyWard_65
- Track 87 : DizzyRudy_58, Damascus_54
- Track 88 : Camille_52
- Track 89 : Count_79
- Track 90 : Sunny4976_62, Jazzy4900_63
- Track 91 : Arzan_64
- Track 92 : Paella_118, Gandionco_115, Qui_118, Elver_117
- Track 93 : AddiRose_57, Serenabean_58, Daddyjeff_58
- Track 94 : Pippin15_59
- Track 95 : JoyLin_59, Yotsuba_59, Eevee_59
- Track 96 : Sweetclover_57

Summary of Final Annotations (See graph section above for start numbers):

The start number called the most often in the published annotations is 29, it was called in 40 of the 137 non-draft genes in the pham.

Genes that call this "Most Annotated" start:

- Aflac_65, AlainaMarie_65, Arataki_63, Artorias_68, Avazak_69, BetterYeti_68, BluerMoon_67, Burley_66, Captrips_67, Copybara_68, Chikenjars_64, Citrus_66, Crocheter_66, Dancer_70, Demure_64, Duffington_64, Eddiemania_68, EndAve_67, Figliar_64, FortCran_68, Gill_68, Gravy_67, Gusicorn_68, Hydrus_68, Jodelie19_64, JulesRay_70, Kenosha_65, Kerry_67, Madvan_66, Magel_69, MajinBuu_67, Mossy_69, Nadmeg_67, Nithya_66, NoPickles_67, Odesza_67, OhMyWard_65, OlgasClover_67, Pepy6_077, Phepper_67, Pherobrine_69, Poco6_075, Rickmore_63, Roney_68, Runhaar_66, Schwartz33_68, Secretariat_66, ShaggyRogers_69, Tanis_68, TenaciousP_66, Trufflozitus_72, Untouchable_68, Vardy_65, Zeph_68,

Genes that have the "Most Annotated" start but do not call it:

-

Genes that do not have the "Most Annotated" start:

- Acai_60, AddiRose_57, Annihilus_46, Arcadia_68, AreFloNak_63, Argan_63, Arzan_64, BarbieDoll_70, BenitoAntonio_66, Benllo_68, Bilo_44, Biscute_69, Boog_64, Bouchard_65, Bowling_68, Breylor17_60, BronxBay_64, Brunswick_61, Camille_52, CapnMurica_58, CastorTray_64, Caterpillar_60, Cheesy_68, Chlochlo_62, Circum_69, Conley_67, Correa_66, Count_79, Daddyjeff_58, Damascus_54, Darby_59, DevitoJr_60, DizzyRudy_58, Djungelskog_63, DoctorPepper_63, Doxi13_47, Dynamite_68, Eevee_59, Egad_64, ElephantMan_60, Elsa_68, Elver_117, Fazel_69, Gandionco_115, GantcherGoblin_64, Giantsbane_64, GoCrazy_65, GoblinVoyage_46, Gordon_58, Hankly_67, Heisenberger_67, HerbBucket_62, Hortihabitatio_68, HotFries_45, Ingrid_67, Inked_66, Issa_61, JEGGS_67, Jazzy4900_63, JoyLin_59, Kardesai_68, KeaneyLin_64, KevinMinion_65, Kinny_70, Leatheia_66, Lewando_69, LibertyBell_55, LilHuddy_65, Linda_64, Loretta_64, LucySwiss_61, Madamoto_69, Makai_64, MediumFry_61, Michelle_64, MiniBagel_60, Mooshroom_69, Moozy_45, MrAaronian_64, Mudcat_64, Mysticmoon_70, NapoleonB_69, Nason_68, Natasha_65, Navi1117_69, Nightmare_62, Niktson_60, Nivinsha_62, Paella_118, Perkunas_70, Petitto_70,

Phaby_66, Phaila_68, PherryCruz_45, Pippin15_59, PowellDog_67, ProfFrink_64, Qui_118, Raunak_65, RavenPuff_46, Renaldo_72, RosaAsantewaa_43, RustyBoy_66, Salk_64, Scap1_45, ScienceWizSam_61, Serenabean_58, SheRa_46, Shepard_66, Shiba_63, Sloopyjoe_64, Sporto_63, StarLord_64, Stayer_64, Sunny4976_62, Sweetclover_57, Synopsis_59, Talon44_71, Tatanka_57, Teacup_61, Tenney120_69, Tenno_61, Tokki_69, Tribby_71, TrixiePhattel_68, Truckee_62, Trustiboi_60, Uzumaki_63, Xenomorph_64, Yotsuba_59, Zeina_68, Zippen_65,

Summary by start number:

Start 15:

- Found in 6 of 186 (3.2%) of genes in pham
- Manual Annotations of this start: 4 of 137
- Called 66.7% of time when present
- Phage (with cluster) where this start called: Eevee_59 (JA), JoyLin_59 (JA), Pippin15_59 (JA), Yotsuba_59 (JA),

Start 20:

- Found in 3 of 186 (1.6%) of genes in pham
- Manual Annotations of this start: 3 of 137
- Called 100.0% of time when present
- Phage (with cluster) where this start called: Camille_52 (EL), Damascus_54 (EL), DizzyRudy_58 (EL),

Start 21:

- Found in 22 of 186 (11.8%) of genes in pham
- Manual Annotations of this start: 5 of 137
- Called 36.4% of time when present
- Phage (with cluster) where this start called: Bouchard_65 (AU2), Caterpillar_60 (AU4), Chlochlo_62 (AU2), Ingrid_67 (AU3), Loretta_64 (AU3), MediumFry_61 (AU4), Phaby_66 (AU2), Zippen_65 (AU3),

Start 22:

- Found in 20 of 186 (10.8%) of genes in pham
- Manual Annotations of this start: 8 of 137
- Called 100.0% of time when present
- Phage (with cluster) where this start called: Argan_63 (AU6), BarbieDoll_70 (AU6), Biscute_69 (AU6), Elver_117 (FK), Gandionco_115 (FK), GantcherGoblin_64 (AU6), Giantsbane_64 (AU2), KevinMinion_65 (AU6), Kinny_70 (AU6), Leathea_66 (AU6), Lewando_69 (AU6), Navi1117_69 (AU6), Paella_118 (FK), Phaila_68 (AU6), Qui_118 (FK), Renaldo_72 (AU6), Tenney120_69 (AU6), TrixiePhattel_68 (AU6), Uzumaki_63 (AU6), Zeina_68 (AU6),

Start 23:

- Found in 48 of 186 (25.8%) of genes in pham
- Manual Annotations of this start: 37 of 137
- Called 100.0% of time when present
- Phage (with cluster) where this start called: Acai_60 (AU1), AreFloNak_63 (AU1), Boog_64 (AW), Breylor17_60 (AU1), BronxBay_64 (AW), Brunswick_61 (AU1), CapnMurica_58 (AU1), CastorTray_64 (AU1), Count_79 (EL), Darby_59 (AU1), DevitoJr_60 (AU1), Djungelskog_63 (AW), DoctorPepper_63 (AW), Egad_64 (AW), ElephantMan_60 (AU1), Gordon_58 (AU1), HerbBucket_62 (AW), Issa_61 (AU1),

LilHuddy_65 (AU2), Linda_64 (AW), LucySwiss_61 (AU1), Makai_64 (AU5), Michelle_64 (AW), MiniBagel_60 (AU1), MrAaronian_64 (AW), Natasha_65 (AW), Nightmare_62 (AU1), Niktson_60 (AU1), Nivinsha_62 (AU1), PowellDog_67 (AW), ProfFrink_64 (AW), Raunak_65 (AW), RustyBoy_66 (AW), Salk_64 (AW), ScienceWizSam_61 (AU1), Shepard_66 (AU2), Shiba_63 (AW), Sloopyjoe_64 (AW), Sporto_63 (AW), StarLord_64 (AW), Stayer_64 (AW), Synopsis_59 (AU1), Tatanka_57 (AU1), Teacup_61 (AU1), Tenno_61 (AU1), Tokki_69 (AU2), Truckee_62 (AU5), Trustiboi_60 (AU1),

Start 24:

- Found in 16 of 186 (8.6%) of genes in pham
- Manual Annotations of this start: 15 of 137
- Called 100.0% of time when present
- Phage (with cluster) where this start called: AddiRose_57 (JA), Annihilus_46 (BI2), Bilo_44 (BI2), Daddyjeff_58 (JA), Doxi13_47 (BI2), GoblinVoyage_46 (BI2), HotFries_45 (BI2), Inked_66 (AU), Madamato_69 (BI1), Moozy_45 (BI2), PherryCruz_45 (BI2), RavenPuff_46 (BI2), Scap1_45 (BI2), Serenabean_58 (JA), SheRa_46 (BI2), Sweetclover_57 (JA),

Start 25:

- Found in 25 of 186 (13.4%) of genes in pham
- Manual Annotations of this start: 19 of 137
- Called 84.0% of time when present
- Phage (with cluster) where this start called: Arcadia_68 (AM), BenitoAntonio_66 (AM), Benllo_68 (AM), Bowling_68 (AM), Cheesy_68 (AM), Circum_69 (AM), Correa_66 (AM), Dynamite_68 (AM), Elsa_68 (AM), GoCrazy_65 (AM), Hankly_67 (AM), Heisenberger_67 (AM), JEGGS_67 (AM), Kardesai_68 (AM), KeaneyLin_64 (AM), Mooshroom_69 (AM), Mudcat_64 (AM), NapoleonB_69 (AM), Nason_68 (AM), Tribby_71 (AM), Xenomorph_64 (AM),

Start 26:

- Found in 1 of 186 (0.5%) of genes in pham
- Manual Annotations of this start: 1 of 137
- Called 100.0% of time when present
- Phage (with cluster) where this start called: LibertyBell_55 (BI3),

Start 27:

- Found in 3 of 186 (1.6%) of genes in pham
- No Manual Annotations of this start.
- Called 100.0% of time when present
- Phage (with cluster) where this start called: Arzan_64 (FI), Jazzy4900_63 (FI), Sunny4976_62 (FI),

Start 28:

- Found in 7 of 186 (3.8%) of genes in pham
- Manual Annotations of this start: 4 of 137
- Called 100.0% of time when present
- Phage (with cluster) where this start called: Conley_67 (DJ), Fazel_69 (DJ), Hortihabitatio_68 (DJ), Mysticmoon_70 (DJ), Perkunas_70 (DJ), Petite_70 (DJ), Talon44_71 (DJ),

Start 29:

- Found in 54 of 186 (29.0%) of genes in pham

- Manual Annotations of this start: 40 of 137
- Called 100.0% of time when present
- Phage (with cluster) where this start called: Aflac_65 (DJ), AlainaMarie_65 (DJ), Arataki_63 (DJ), Artorias_68 (DJ), Avazak_69 (DJ), BetterYeti_68 (DJ), BluerMoon_67 (DJ), Burley_66 (DJ), Captrips_67 (DJ), Capybara_68 (DJ), Chikenjars_64 (DJ), Citrus_66 (DJ), Crocheter_66 (DJ), Dancer_70 (DJ), Demure_64 (DJ), Duffington_64 (DJ), Eddiemania_68 (DJ), EndAve_67 (DJ), Figliar_64 (DJ), FortCran_68 (DJ), Gill_68 (DJ), Gravy_67 (DJ), Gusicorn_68 (DJ), Hydrus_68 (DJ), Jodelie19_64 (DJ), JulesRay_70 (DJ), Kenosha_65 (DJ), Kerry_67 (DJ), Madvan_66 (DJ), Magel_69 (DJ), MajinBuu_67 (DJ), Mossy_69 (DJ), Nadmeg_67 (DJ), Nithya_66 (DJ), NoPickles_67 (DJ), Odesza_67 (DJ), OhMyWard_65 (DJ), OlgasClover_67 (DJ), Pepy6_077 (CC), Phepper_67 (DJ), Pherobrine_69 (DJ), Poco6_075 (CC), Rickmore_63 (DJ), Roney_68 (DJ), Runhaar_66 (DJ), Schwartz33_68 (DJ), Secretariat_66 (DJ), ShaggyRogers_69 (DJ), Tanis_68 (DJ), TenaciousP_66 (DJ), Trufflozitus_72 (DJ), Untouchable_68 (DJ), Vardy_65 (DJ), Zeph_68 (DJ),

Start 30:

- Found in 1 of 186 (0.5%) of genes in pham
- Manual Annotations of this start: 1 of 137
- Called 100.0% of time when present
- Phage (with cluster) where this start called: RosaAsantewaa_43 (BI2),

Summary by clusters:

There are 18 clusters represented in this pham: EL, DJ, AU5, CC, AM, BI3, AU1, AU3, AU2, AU, AU4, AW, AU6, FI, FK, BI2, JA, BI1,

Info for manual annotations of cluster AM:

- Start number 25 was manually annotated 19 times for cluster AM.

Info for manual annotations of cluster AU:

- Start number 24 was manually annotated 1 time for cluster AU.

Info for manual annotations of cluster AU1:

- Start number 23 was manually annotated 17 times for cluster AU1.

Info for manual annotations of cluster AU2:

- Start number 21 was manually annotated 1 time for cluster AU2.
- Start number 22 was manually annotated 1 time for cluster AU2.
- Start number 23 was manually annotated 3 times for cluster AU2.

Info for manual annotations of cluster AU3:

- Start number 21 was manually annotated 2 times for cluster AU3.

Info for manual annotations of cluster AU4:

- Start number 21 was manually annotated 2 times for cluster AU4.

Info for manual annotations of cluster AU5:

- Start number 23 was manually annotated 2 times for cluster AU5.

Info for manual annotations of cluster AU6:

- Start number 22 was manually annotated 5 times for cluster AU6.

Info for manual annotations of cluster AW:

- Start number 23 was manually annotated 14 times for cluster AW.

Info for manual annotations of cluster BI1:

- Start number 24 was manually annotated 1 time for cluster BI1.

Info for manual annotations of cluster BI2:

- Start number 24 was manually annotated 10 times for cluster BI2.
- Start number 30 was manually annotated 1 time for cluster BI2.

Info for manual annotations of cluster BI3:

- Start number 26 was manually annotated 1 time for cluster BI3.

Info for manual annotations of cluster DJ:

- Start number 28 was manually annotated 4 times for cluster DJ.
- Start number 29 was manually annotated 40 times for cluster DJ.

Info for manual annotations of cluster EL:

- Start number 20 was manually annotated 3 times for cluster EL.
- Start number 23 was manually annotated 1 time for cluster EL.

Info for manual annotations of cluster FK:

- Start number 22 was manually annotated 2 times for cluster FK.

Info for manual annotations of cluster JA:

- Start number 15 was manually annotated 4 times for cluster JA.
- Start number 24 was manually annotated 3 times for cluster JA.

Gene Information:

Gene: Acai_60 Start: 43405, Stop: 43980, Start Num: 23

Candidate Starts for Acai_60:

(Start: 23 @43405 has 37 MA's), (32, 43441), (44, 43552), (45, 43555), (59, 43669), (69, 43723), (72, 43732), (74, 43735), (92, 43843), (95, 43858), (105, 43960),

Gene: AddiRose_57 Start: 39940, Stop: 40485, Start Num: 24

Candidate Starts for AddiRose_57:

(Start: 24 @39940 has 15 MA's), (35, 39997), (43, 40081), (59, 40213),

Gene: Aflac_65 Start: 46978, Stop: 47559, Start Num: 29

Candidate Starts for Aflac_65:

(Start: 29 @46978 has 40 MA's), (37, 47053), (61, 47245), (62, 47248), (82, 47335), (93, 47410),

Gene: AlainaMarie_65 Start: 47020, Stop: 47601, Start Num: 29

Candidate Starts for AlainaMarie_65:

(4, 46906), (7, 46954), (Start: 29 @47020 has 40 MA's), (37, 47095), (61, 47287), (62, 47290), (84, 47398), (87, 47428), (93, 47452),

Gene: Annihilus_46 Start: 35097, Stop: 35678, Start Num: 24

Candidate Starts for Annihilus_46:

(3, 34917), (10, 35004), (Start: 24 @35097 has 15 MA's), (35, 35154), (39, 35220), (64, 35385), (72, 35412), (84, 35472), (89, 35514), (91, 35520), (99, 35574), (103, 35619), (107, 35661),

Gene: Arataki_63 Start: 46684, Stop: 47268, Start Num: 29

Candidate Starts for Arataki_63:

(4, 46495), (7, 46543), (13, 46594), (16, 46609), (Start: 29 @46684 has 40 MA's), (37, 46759), (61, 46951), (62, 46954), (82, 47041), (84, 47062), (87, 47092), (93, 47116),

Gene: Arcadia_68 Start: 42977, Stop: 43471, Start Num: 25

Candidate Starts for Arcadia_68:

(6, 42839), (11, 42887), (Start: 25 @42977 has 19 MA's), (38, 43073), (45, 43124), (57, 43232), (58, 43235), (66, 43265), (68, 43271), (87, 43376),

Gene: AreFloNak_63 Start: 43375, Stop: 43950, Start Num: 23

Candidate Starts for AreFloNak_63:

(Start: 23 @43375 has 37 MA's), (32, 43411), (44, 43522), (45, 43525), (59, 43639), (69, 43693), (72, 43702), (92, 43813), (105, 43930),

Gene: Argan_63 Start: 42106, Stop: 42693, Start Num: 22

Candidate Starts for Argan_63:

(Start: 22 @42106 has 8 MA's), (35, 42169), (40, 42235), (45, 42262), (50, 42289), (59, 42382), (69, 42421), (96, 42562), (99, 42592), (105, 42646),

Gene: Artorias_68 Start: 47461, Stop: 48048, Start Num: 29

Candidate Starts for Artorias_68:

(Start: 29 @47461 has 40 MA's), (32, 47485), (37, 47536), (45, 47599), (56, 47710), (62, 47731), (79, 47806), (80, 47812), (84, 47839), (87, 47869),

Gene: Arzan_64 Start: 42782, Stop: 43357, Start Num: 27

Candidate Starts for Arzan_64:

(27, 42782), (47, 42938), (53, 43004), (59, 43049), (72, 43097), (86, 43184),

Gene: Avazak_69 Start: 47788, Stop: 48375, Start Num: 29

Candidate Starts for Avazak_69:

(Start: 29 @47788 has 40 MA's), (32, 47812), (37, 47863), (45, 47926), (62, 48058), (79, 48133), (80, 48139), (84, 48166), (87, 48196), (99, 48268),

Gene: BarbieDoll_70 Start: 43789, Stop: 44373, Start Num: 22

Candidate Starts for BarbieDoll_70:

(Start: 22 @43789 has 8 MA's), (45, 43942), (50, 43969), (59, 44062), (69, 44101), (87, 44200), (96, 44242), (99, 44272), (105, 44326),

Gene: BenitoAntonio_66 Start: 42012, Stop: 42506, Start Num: 25

Candidate Starts for BenitoAntonio_66:

(Start: 25 @42012 has 19 MA's), (38, 42108), (39, 42129), (40, 42132), (45, 42159), (57, 42267), (68, 42306), (76, 42333), (84, 42381),

Gene: Benllo_68 Start: 42690, Stop: 43184, Start Num: 25

Candidate Starts for Benllo_68:

(Start: 25 @42690 has 19 MA's), (38, 42786), (39, 42807), (40, 42810), (45, 42837), (57, 42945), (68, 42984), (76, 43011), (84, 43059),

Gene: BetterYeti_68 Start: 47047, Stop: 47631, Start Num: 29

Candidate Starts for BetterYeti_68:

(Start: 29 @47047 has 40 MA's), (37, 47122), (56, 47296), (62, 47317), (82, 47404), (84, 47425), (87, 47455), (93, 47479),

Gene: Bilo_44 Start: 35251, Stop: 35868, Start Num: 24

Candidate Starts for Bilo_44:

(3, 35068), (10, 35158), (Start: 24 @35251 has 15 MA's), (35, 35308), (39, 35374), (72, 35566), (84, 35626), (89, 35668), (91, 35674), (99, 35728),

Gene: Biscute_69 Start: 43441, Stop: 44025, Start Num: 22

Candidate Starts for Biscute_69:

(Start: 22 @43441 has 8 MA's), (45, 43594), (50, 43621), (59, 43714), (69, 43753), (96, 43894), (99, 43924), (105, 43978),

Gene: BluerMoon_67 Start: 47016, Stop: 47597, Start Num: 29

Candidate Starts for BluerMoon_67:

(Start: 29 @47016 has 40 MA's), (37, 47091), (56, 47265), (61, 47283), (62, 47286), (82, 47373), (84, 47394), (87, 47424), (93, 47448),

Gene: Boog_64 Start: 41659, Stop: 42237, Start Num: 23

Candidate Starts for Boog_64:

(Start: 23 @41659 has 37 MA's), (33, 41707), (34, 41713), (36, 41731), (45, 41809), (46, 41812), (51, 41839), (59, 41932), (60, 41935), (69, 41971), (78, 41998), (95, 42106),

Gene: Bouchard_65 Start: 44008, Stop: 44604, Start Num: 21

Candidate Starts for Bouchard_65:

(Start: 21 @44008 has 5 MA's), (32, 44050), (45, 44164), (72, 44341), (80, 44374), (92, 44452),

Gene: Bowling_68 Start: 42966, Stop: 43460, Start Num: 25

Candidate Starts for Bowling_68:

(6, 42828), (11, 42876), (Start: 25 @42966 has 19 MA's), (38, 43062), (45, 43113), (57, 43221), (58, 43224), (66, 43254), (68, 43260), (87, 43365),

Gene: Breylor17_60 Start: 43951, Stop: 44526, Start Num: 23

Candidate Starts for Breylor17_60:

(Start: 23 @43951 has 37 MA's), (32, 43987), (44, 44098), (45, 44101), (59, 44215), (69, 44269), (72, 44278), (74, 44281), (92, 44389),

Gene: BronxBay_64 Start: 41915, Stop: 42493, Start Num: 23

Candidate Starts for BronxBay_64:

(Start: 23 @41915 has 37 MA's), (33, 41963), (34, 41969), (36, 41987), (45, 42065), (46, 42068), (51, 42095), (59, 42188), (60, 42191), (69, 42227), (78, 42254), (95, 42362),

Gene: Brunswick_61 Start: 43248, Stop: 43823, Start Num: 23

Candidate Starts for Brunswick_61:

(Start: 23 @43248 has 37 MA's), (32, 43284), (44, 43395), (45, 43398), (59, 43512), (69, 43566), (72, 43575), (74, 43578), (92, 43686), (105, 43803),

Gene: Burley_66 Start: 46701, Stop: 47285, Start Num: 29

Candidate Starts for Burley_66:

(Start: 21 @46683 has 5 MA's), (Start: 29 @46701 has 40 MA's), (37, 46776), (61, 46968), (62, 46971), (66, 46998), (87, 47109), (93, 47133),

Gene: Camille_52 Start: 38577, Stop: 39089, Start Num: 20
Candidate Starts for Camille_52:
(Start: 20 @38577 has 3 MA's), (44, 38727), (53, 38805), (97, 39030),

Gene: CapnMurica_58 Start: 44140, Stop: 44715, Start Num: 23
Candidate Starts for CapnMurica_58:
(Start: 23 @44140 has 37 MA's), (32, 44176), (44, 44287), (45, 44290), (69, 44458), (72, 44467), (74, 44470), (92, 44578), (95, 44593), (105, 44695),

Gene: Captrips_67 Start: 46936, Stop: 47523, Start Num: 29
Candidate Starts for Captrips_67:
(Start: 29 @46936 has 40 MA's), (32, 46960), (37, 47011), (45, 47074), (62, 47206), (79, 47281), (80, 47287), (84, 47314), (87, 47344), (99, 47416),

Gene: Capybara_68 Start: 47267, Stop: 47854, Start Num: 29
Candidate Starts for Capybara_68:
(Start: 29 @47267 has 40 MA's), (32, 47291), (37, 47342), (39, 47375), (45, 47405), (56, 47516), (62, 47537), (79, 47612), (84, 47645), (87, 47675), (98, 47732), (99, 47747),

Gene: CastorTray_64 Start: 44139, Stop: 44714, Start Num: 23
Candidate Starts for CastorTray_64:
(Start: 23 @44139 has 37 MA's), (32, 44175), (44, 44286), (45, 44289), (59, 44403), (69, 44457), (72, 44466), (74, 44469), (92, 44577),

Gene: Caterpillar_60 Start: 43063, Stop: 43644, Start Num: 21
Candidate Starts for Caterpillar_60:
(Start: 21 @43063 has 5 MA's), (32, 43105), (44, 43216), (45, 43219), (72, 43396), (92, 43507), (95, 43522), (105, 43624),

Gene: Cheesy_68 Start: 42204, Stop: 42698, Start Num: 25
Candidate Starts for Cheesy_68:
(Start: 25 @42204 has 19 MA's), (45, 42351), (57, 42459), (66, 42492), (68, 42498), (87, 42603),

Gene: Chikenjars_64 Start: 47040, Stop: 47621, Start Num: 29
Candidate Starts for Chikenjars_64:
(Start: 29 @47040 has 40 MA's), (37, 47115), (61, 47307), (62, 47310), (82, 47397), (84, 47418), (93, 47472),

Gene: Chlochlo_62 Start: 43534, Stop: 44130, Start Num: 21
Candidate Starts for Chlochlo_62:
(Start: 21 @43534 has 5 MA's), (32, 43576), (45, 43690), (72, 43867), (92, 43978),

Gene: Circum_69 Start: 42780, Stop: 43274, Start Num: 25
Candidate Starts for Circum_69:
(Start: 25 @42780 has 19 MA's), (38, 42876), (39, 42897), (40, 42900), (45, 42927), (57, 43035), (68, 43074), (76, 43101), (84, 43149),

Gene: Citrus_66 Start: 47310, Stop: 47891, Start Num: 29
Candidate Starts for Citrus_66:
(4, 47196), (7, 47244), (Start: 29 @47310 has 40 MA's), (37, 47385), (61, 47577), (62, 47580), (84, 47688), (87, 47718), (93, 47742),

Gene: Conley_67 Start: 48039, Stop: 48629, Start Num: 28

Candidate Starts for Conley_67:

(12, 48018), (Start: 28 @48039 has 4 MA's), (32, 48063), (37, 48114), (39, 48147), (45, 48177), (61, 48306), (62, 48309), (79, 48384), (84, 48417), (87, 48447), (99, 48519),

Gene: Correa_66 Start: 41778, Stop: 42272, Start Num: 25

Candidate Starts for Correa_66:

(Start: 25 @41778 has 19 MA's), (45, 41925), (57, 42033), (66, 42066), (68, 42072), (87, 42177),

Gene: Count_79 Start: 54971, Stop: 55534, Start Num: 23

Candidate Starts for Count_79:

(Start: 23 @54971 has 37 MA's), (49, 55145), (53, 55199), (54, 55211), (59, 55241), (69, 55280), (72, 55289), (87, 55382), (105, 55514),

Gene: Crocheter_66 Start: 47141, Stop: 47725, Start Num: 29

Candidate Starts for Crocheter_66:

(Start: 29 @47141 has 40 MA's), (37, 47216), (56, 47390), (62, 47411), (82, 47498), (84, 47519), (87, 47549), (93, 47573),

Gene: Daddyjeff_58 Start: 40160, Stop: 40705, Start Num: 24

Candidate Starts for Daddyjeff_58:

(Start: 24 @40160 has 15 MA's), (35, 40217), (43, 40301), (59, 40433),

Gene: Damascus_54 Start: 40213, Stop: 40734, Start Num: 20

Candidate Starts for Damascus_54:

(Start: 20 @40213 has 3 MA's), (44, 40363), (81, 40564), (85, 40606), (97, 40666),

Gene: Dancer_70 Start: 47196, Stop: 47783, Start Num: 29

Candidate Starts for Dancer_70:

(Start: 29 @47196 has 40 MA's), (32, 47220), (37, 47271), (39, 47304), (45, 47334), (56, 47445), (62, 47466), (79, 47541), (84, 47574), (87, 47604), (98, 47661), (99, 47676),

Gene: Darby_59 Start: 43186, Stop: 43761, Start Num: 23

Candidate Starts for Darby_59:

(Start: 23 @43186 has 37 MA's), (32, 43222), (44, 43333), (45, 43336), (59, 43450), (69, 43504), (72, 43513), (74, 43516), (92, 43624),

Gene: Demure_64 Start: 46684, Stop: 47268, Start Num: 29

Candidate Starts for Demure_64:

(4, 46495), (7, 46543), (13, 46594), (16, 46609), (Start: 29 @46684 has 40 MA's), (37, 46759), (61, 46951), (62, 46954), (82, 47041), (84, 47062), (87, 47092), (93, 47116),

Gene: DevitoJr_60 Start: 43572, Stop: 44147, Start Num: 23

Candidate Starts for DevitoJr_60:

(Start: 23 @43572 has 37 MA's), (32, 43608), (44, 43719), (45, 43722), (59, 43836), (69, 43890), (72, 43899), (74, 43902), (92, 44010),

Gene: DizzyRudy_58 Start: 40100, Stop: 40621, Start Num: 20

Candidate Starts for DizzyRudy_58:

(Start: 20 @40100 has 3 MA's), (44, 40250), (81, 40451), (85, 40493), (97, 40553),

Gene: Djungelskog_63 Start: 41914, Stop: 42492, Start Num: 23

Candidate Starts for Djungelskog_63:

(Start: 23 @41914 has 37 MA's), (33, 41962), (34, 41968), (36, 41986), (45, 42064), (46, 42067), (51, 42094), (59, 42187), (60, 42190), (69, 42226), (78, 42253), (95, 42361),

Gene: DoctorPepper_63 Start: 41619, Stop: 42197, Start Num: 23

Candidate Starts for DoctorPepper_63:

(Start: 23 @41619 has 37 MA's), (33, 41667), (34, 41673), (36, 41691), (45, 41769), (46, 41772), (51, 41799), (59, 41892), (60, 41895), (69, 41931), (78, 41958), (95, 42066),

Gene: Doxi13_47 Start: 35297, Stop: 35878, Start Num: 24

Candidate Starts for Doxi13_47:

(10, 35204), (Start: 24 @35297 has 15 MA's), (35, 35354), (39, 35420), (64, 35585), (72, 35612), (84, 35672), (89, 35714), (91, 35720), (99, 35774), (107, 35861),

Gene: Duffington_64 Start: 46736, Stop: 47317, Start Num: 29

Candidate Starts for Duffington_64:

(Start: 21 @46718 has 5 MA's), (Start: 29 @46736 has 40 MA's), (37, 46811), (56, 46985), (61, 47003), (62, 47006), (82, 47093), (84, 47114), (87, 47144), (93, 47168),

Gene: Dynamite_68 Start: 42793, Stop: 43287, Start Num: 25

Candidate Starts for Dynamite_68:

(Start: 25 @42793 has 19 MA's), (38, 42889), (39, 42910), (40, 42913), (45, 42940), (57, 43048), (68, 43087), (76, 43114), (84, 43162),

Gene: Eddiemania_68 Start: 47892, Stop: 48476, Start Num: 29

Candidate Starts for Eddiemania_68:

(Start: 21 @47874 has 5 MA's), (Start: 29 @47892 has 40 MA's), (37, 47967), (61, 48159), (62, 48162), (74, 48213), (82, 48249), (84, 48270), (87, 48300), (93, 48324),

Gene: Eevee_59 Start: 43509, Stop: 44129, Start Num: 15

Candidate Starts for Eevee_59:

(Start: 15 @43509 has 4 MA's), (Start: 25 @43578 has 19 MA's), (32, 43611), (48, 43740), (53, 43800), (83, 43953), (85, 43971),

Gene: Egad_64 Start: 41910, Stop: 42488, Start Num: 23

Candidate Starts for Egad_64:

(Start: 23 @41910 has 37 MA's), (33, 41958), (34, 41964), (36, 41982), (45, 42060), (46, 42063), (51, 42090), (59, 42183), (69, 42222), (78, 42249), (95, 42357),

Gene: ElephantMan_60 Start: 43878, Stop: 44453, Start Num: 23

Candidate Starts for ElephantMan_60:

(Start: 23 @43878 has 37 MA's), (32, 43914), (44, 44025), (45, 44028), (59, 44142), (69, 44196), (72, 44205), (74, 44208), (92, 44316), (95, 44331), (105, 44433),

Gene: Elsa_68 Start: 42977, Stop: 43471, Start Num: 25

Candidate Starts for Elsa_68:

(6, 42839), (11, 42887), (Start: 25 @42977 has 19 MA's), (38, 43073), (45, 43124), (57, 43232), (58, 43235), (66, 43265), (68, 43271), (87, 43376),

Gene: Elver_117 Start: 65179, Stop: 65781, Start Num: 22

Candidate Starts for Elver_117:

(10, 65089), (Start: 22 @65179 has 8 MA's), (45, 65332), (69, 65500), (87, 65599), (90, 65614), (92, 65620),

Gene: EndAve_67 Start: 47204, Stop: 47785, Start Num: 29

Candidate Starts for EndAve_67:

(4, 47090), (7, 47138), (Start: 29 @47204 has 40 MA's), (37, 47279), (61, 47471), (62, 47474), (84, 47582), (87, 47612), (93, 47636),

Gene: Fazel_69 Start: 47551, Stop: 48135, Start Num: 28

Candidate Starts for Fazel_69:

(Start: 28 @47551 has 4 MA's), (37, 47626), (42, 47677), (55, 47797), (62, 47821), (76, 47881), (87, 47959), (93, 47983),

Gene: Figliar_64 Start: 47046, Stop: 47627, Start Num: 29

Candidate Starts for Figliar_64:

(Start: 29 @47046 has 40 MA's), (37, 47121), (61, 47313), (62, 47316), (82, 47403), (84, 47424), (87, 47454), (93, 47478),

Gene: FortCran_68 Start: 47461, Stop: 48048, Start Num: 29

Candidate Starts for FortCran_68:

(Start: 29 @47461 has 40 MA's), (32, 47485), (37, 47536), (45, 47599), (56, 47710), (62, 47731), (79, 47806), (80, 47812), (84, 47839), (87, 47869),

Gene: Gandionco_115 Start: 63991, Stop: 64593, Start Num: 22

Candidate Starts for Gandionco_115:

(10, 63901), (Start: 22 @63991 has 8 MA's), (45, 64144), (69, 64312), (87, 64411), (90, 64426), (92, 64432),

Gene: GantcherGoblin_64 Start: 42162, Stop: 42749, Start Num: 22

Candidate Starts for GantcherGoblin_64:

(Start: 22 @42162 has 8 MA's), (35, 42225), (40, 42291), (45, 42318), (50, 42345), (59, 42438), (69, 42477), (96, 42618), (99, 42648), (105, 42702),

Gene: Giantsbane_64 Start: 42742, Stop: 43335, Start Num: 22

Candidate Starts for Giantsbane_64:

(Start: 22 @42742 has 8 MA's), (32, 42781), (45, 42895), (72, 43072), (92, 43183),

Gene: Gill_68 Start: 47279, Stop: 47866, Start Num: 29

Candidate Starts for Gill_68:

(Start: 29 @47279 has 40 MA's), (32, 47303), (37, 47354), (39, 47387), (45, 47417), (56, 47528), (62, 47549), (79, 47624), (84, 47657), (87, 47687), (98, 47744), (99, 47759),

Gene: GoCrazy_65 Start: 42237, Stop: 42731, Start Num: 25

Candidate Starts for GoCrazy_65:

(Start: 25 @42237 has 19 MA's), (38, 42333), (40, 42357), (45, 42384), (50, 42411), (57, 42492), (68, 42531), (76, 42558), (84, 42606),

Gene: GoblinVoyage_46 Start: 35085, Stop: 35666, Start Num: 24

Candidate Starts for GoblinVoyage_46:

(10, 34992), (Start: 24 @35085 has 15 MA's), (35, 35142), (39, 35208), (64, 35373), (72, 35400), (84, 35460), (89, 35502), (91, 35508), (99, 35562), (107, 35649),

Gene: Gordon_58 Start: 44058, Stop: 44633, Start Num: 23

Candidate Starts for Gordon_58:

(Start: 23 @44058 has 37 MA's), (32, 44094), (44, 44205), (45, 44208), (59, 44322), (69, 44376), (72, 44385), (74, 44388), (92, 44496), (95, 44511),

Gene: Gravy_67 Start: 46957, Stop: 47544, Start Num: 29

Candidate Starts for Gravy_67:

(Start: 29 @46957 has 40 MA's), (32, 46981), (37, 47032), (39, 47065), (45, 47095), (56, 47206), (62, 47227), (79, 47302), (84, 47335), (87, 47365), (98, 47422), (99, 47437),

Gene: Gusicorn_68 Start: 47048, Stop: 47632, Start Num: 29

Candidate Starts for Gusicorn_68:

(Start: 29 @47048 has 40 MA's), (37, 47123), (56, 47297), (62, 47318), (82, 47405), (84, 47426), (87, 47456), (93, 47480),

Gene: Hankly_67 Start: 41861, Stop: 42355, Start Num: 25

Candidate Starts for Hankly_67:

(Start: 25 @41861 has 19 MA's), (38, 41957), (39, 41978), (40, 41981), (45, 42008), (57, 42116), (68, 42155), (76, 42182), (84, 42230),

Gene: Heisenberger_67 Start: 42199, Stop: 42693, Start Num: 25

Candidate Starts for Heisenberger_67:

(Start: 25 @42199 has 19 MA's), (38, 42295), (40, 42319), (45, 42346), (57, 42454), (68, 42493), (76, 42520), (84, 42568),

Gene: HerbBucket_62 Start: 41641, Stop: 42219, Start Num: 23

Candidate Starts for HerbBucket_62:

(Start: 23 @41641 has 37 MA's), (33, 41689), (34, 41695), (36, 41713), (45, 41791), (46, 41794), (51, 41821), (59, 41914), (60, 41917), (69, 41953), (78, 41980), (95, 42088),

Gene: Hortihabitatio_68 Start: 47935, Stop: 48519, Start Num: 28

Candidate Starts for Hortihabitatio_68:

(Start: 28 @47935 has 4 MA's), (37, 48010), (42, 48061), (62, 48205), (76, 48265), (87, 48343), (93, 48367), (106, 48502),

Gene: HotFries_45 Start: 35274, Stop: 35855, Start Num: 24

Candidate Starts for HotFries_45:

(10, 35181), (Start: 24 @35274 has 15 MA's), (35, 35331), (39, 35397), (64, 35562), (72, 35589), (84, 35649), (89, 35691), (91, 35697), (99, 35751), (103, 35796), (105, 35811), (107, 35838),

Gene: Hydrus_68 Start: 47867, Stop: 48451, Start Num: 29

Candidate Starts for Hydrus_68:

(4, 47753), (7, 47801), (Start: 21 @47849 has 5 MA's), (Start: 29 @47867 has 40 MA's), (37, 47942), (61, 48134), (62, 48137), (84, 48245), (87, 48275), (93, 48299),

Gene: Ingrid_67 Start: 43933, Stop: 44514, Start Num: 21

Candidate Starts for Ingrid_67:

(Start: 21 @43933 has 5 MA's), (32, 43975), (44, 44086), (45, 44089), (69, 44257), (72, 44266), (92, 44377),

Gene: Inked_66 Start: 44617, Stop: 45189, Start Num: 24

Candidate Starts for Inked_66:

(Start: 24 @44617 has 15 MA's), (32, 44650), (44, 44761), (45, 44764), (72, 44941), (92, 45052),

Gene: Issa_61 Start: 43234, Stop: 43809, Start Num: 23

Candidate Starts for Issa_61:

(Start: 23 @43234 has 37 MA's), (32, 43270), (44, 43381), (45, 43384), (69, 43552), (72, 43561), (74, 43564), (92, 43672), (95, 43687), (105, 43789),

Gene: JEGGS_67 Start: 42278, Stop: 42772, Start Num: 25

Candidate Starts for JEGGS_67:

(Start: 25 @42278 has 19 MA's), (38, 42374), (40, 42398), (45, 42425), (57, 42533), (68, 42572), (76, 42599), (84, 42647),

Gene: Jazzy4900_63 Start: 43553, Stop: 44128, Start Num: 27

Candidate Starts for Jazzy4900_63:

(Start: 15 @43484 has 4 MA's), (27, 43553), (47, 43709), (59, 43820), (72, 43868), (80, 43901), (86, 43955), (90, 43973),

Gene: Jodelie19_64 Start: 48450, Stop: 49031, Start Num: 29

Candidate Starts for Jodelie19_64:

(Start: 29 @48450 has 40 MA's), (37, 48525), (56, 48699), (62, 48720), (82, 48807), (84, 48828), (87, 48858), (93, 48882),

Gene: JoyLin_59 Start: 43629, Stop: 44249, Start Num: 15

Candidate Starts for JoyLin_59:

(Start: 15 @43629 has 4 MA's), (Start: 25 @43698 has 19 MA's), (32, 43731), (48, 43860), (53, 43920), (83, 44073), (85, 44091),

Gene: JulesRay_70 Start: 47454, Stop: 48041, Start Num: 29

Candidate Starts for JulesRay_70:

(Start: 29 @47454 has 40 MA's), (32, 47478), (37, 47529), (45, 47592), (56, 47703), (62, 47724), (79, 47799), (84, 47832), (87, 47862), (99, 47934),

Gene: Kardesai_68 Start: 42587, Stop: 43081, Start Num: 25

Candidate Starts for Kardesai_68:

(Start: 25 @42587 has 19 MA's), (38, 42683), (39, 42704), (40, 42707), (45, 42734), (57, 42842), (68, 42881), (76, 42908), (84, 42956),

Gene: KeaneyLin_64 Start: 42237, Stop: 42731, Start Num: 25

Candidate Starts for KeaneyLin_64:

(Start: 25 @42237 has 19 MA's), (38, 42333), (40, 42357), (45, 42384), (50, 42411), (57, 42492), (68, 42531), (76, 42558), (84, 42606),

Gene: Kenosha_65 Start: 47320, Stop: 47904, Start Num: 29

Candidate Starts for Kenosha_65:

(Start: 21 @47302 has 5 MA's), (Start: 29 @47320 has 40 MA's), (37, 47395), (61, 47587), (62, 47590), (66, 47617), (84, 47698), (87, 47728), (93, 47752),

Gene: Kerry_67 Start: 46957, Stop: 47544, Start Num: 29

Candidate Starts for Kerry_67:

(Start: 29 @46957 has 40 MA's), (32, 46981), (37, 47032), (39, 47065), (45, 47095), (56, 47206), (62, 47227), (79, 47302), (84, 47335), (87, 47365), (98, 47422), (99, 47437),

Gene: KevinMinion_65 Start: 43057, Stop: 43644, Start Num: 22

Candidate Starts for KevinMinion_65:

(Start: 22 @43057 has 8 MA's), (35, 43120), (40, 43186), (45, 43213), (50, 43240), (59, 43333), (69, 43372), (96, 43513), (99, 43543), (105, 43597),

Gene: Kinny_70 Start: 44269, Stop: 44853, Start Num: 22

Candidate Starts for Kinny_70:

(Start: 22 @44269 has 8 MA's), (45, 44422), (50, 44449), (59, 44542), (69, 44581), (96, 44722), (99, 44752), (105, 44806),

Gene: Leathea_66 Start: 41902, Stop: 42486, Start Num: 22

Candidate Starts for Leathea_66:

(8, 41782), (14, 41833), (18, 41848), (Start: 22 @41902 has 8 MA's), (45, 42055), (50, 42082), (59, 42175), (69, 42214), (96, 42355), (99, 42385), (105, 42439),

Gene: Lewando_69 Start: 43861, Stop: 44445, Start Num: 22

Candidate Starts for Lewando_69:

(Start: 22 @43861 has 8 MA's), (45, 44014), (50, 44041), (59, 44134), (69, 44173), (96, 44314), (99, 44344), (105, 44398),

Gene: LibertyBell_55 Start: 39572, Stop: 40195, Start Num: 26

Candidate Starts for LibertyBell_55:

(Start: 26 @39572 has 1 MA's), (31, 39599), (45, 39716), (71, 39902), (75, 39917), (85, 39986), (108, 40187),

Gene: LilHuddy_65 Start: 43852, Stop: 44442, Start Num: 23

Candidate Starts for LilHuddy_65:

(Start: 23 @43852 has 37 MA's), (32, 43888), (45, 44002), (69, 44170), (72, 44179), (92, 44290),

Gene: Linda_64 Start: 41912, Stop: 42490, Start Num: 23

Candidate Starts for Linda_64:

(Start: 23 @41912 has 37 MA's), (33, 41960), (34, 41966), (36, 41984), (45, 42062), (46, 42065), (51, 42092), (59, 42185), (60, 42188), (69, 42224), (78, 42251), (95, 42359),

Gene: Loretta_64 Start: 43933, Stop: 44514, Start Num: 21

Candidate Starts for Loretta_64:

(Start: 21 @43933 has 5 MA's), (32, 43975), (44, 44086), (45, 44089), (69, 44257), (72, 44266), (92, 44377),

Gene: LucySwiss_61 Start: 43028, Stop: 43603, Start Num: 23

Candidate Starts for LucySwiss_61:

(Start: 23 @43028 has 37 MA's), (32, 43064), (44, 43175), (45, 43178), (59, 43292), (69, 43346), (72, 43355), (74, 43358), (92, 43466), (105, 43583),

Gene: Madamoto_69 Start: 44307, Stop: 44897, Start Num: 24

Candidate Starts for Madamoto_69:

(Start: 24 @44307 has 15 MA's), (31, 44340), (37, 44394), (39, 44427), (42, 44445), (45, 44457), (50, 44484), (59, 44574), (61, 44583), (67, 44607), (73, 44628), (74, 44631), (88, 44727),

Gene: Madvan_66 Start: 46753, Stop: 47337, Start Num: 29

Candidate Starts for Madvan_66:

(4, 46639), (7, 46687), (Start: 21 @46735 has 5 MA's), (Start: 29 @46753 has 40 MA's), (37, 46828), (62, 47023), (82, 47110), (84, 47131), (87, 47161), (93, 47185),

Gene: Magel_69 Start: 47194, Stop: 47781, Start Num: 29

Candidate Starts for Magel_69:

(Start: 29 @47194 has 40 MA's), (32, 47218), (37, 47269), (39, 47302), (45, 47332), (56, 47443), (62, 47464), (79, 47539), (84, 47572), (87, 47602), (98, 47659), (99, 47674),

Gene: MajinBuu_67 Start: 47428, Stop: 48009, Start Num: 29

Candidate Starts for MajinBuu_67:

(Start: 29 @47428 has 40 MA's), (37, 47503), (56, 47677), (61, 47695), (62, 47698), (82, 47785), (84, 47806), (87, 47836), (93, 47860),

Gene: Makai_64 Start: 43998, Stop: 44588, Start Num: 23

Candidate Starts for Makai_64:

(Start: 23 @43998 has 37 MA's), (32, 44034), (45, 44148), (69, 44316), (72, 44325), (92, 44436),

Gene: MediumFry_61 Start: 43358, Stop: 43939, Start Num: 21

Candidate Starts for MediumFry_61:

(Start: 21 @43358 has 5 MA's), (32, 43400), (44, 43511), (45, 43514), (72, 43691), (92, 43802), (105, 43919),

Gene: Michelle_64 Start: 41914, Stop: 42492, Start Num: 23

Candidate Starts for Michelle_64:

(Start: 23 @41914 has 37 MA's), (33, 41962), (34, 41968), (36, 41986), (45, 42064), (46, 42067), (51, 42094), (59, 42187), (60, 42190), (69, 42226), (78, 42253), (95, 42361),

Gene: MiniBagel_60 Start: 44123, Stop: 44698, Start Num: 23

Candidate Starts for MiniBagel_60:

(Start: 23 @44123 has 37 MA's), (32, 44159), (44, 44270), (45, 44273), (69, 44441), (72, 44450), (74, 44453), (92, 44561), (95, 44576), (105, 44678),

Gene: Mooshroom_69 Start: 42587, Stop: 43081, Start Num: 25

Candidate Starts for Mooshroom_69:

(Start: 25 @42587 has 19 MA's), (38, 42683), (39, 42704), (40, 42707), (45, 42734), (57, 42842), (68, 42881), (76, 42908), (84, 42956),

Gene: Moozy_45 Start: 35081, Stop: 35662, Start Num: 24

Candidate Starts for Moozy_45:

(1, 34637), (2, 34640), (10, 34988), (Start: 24 @35081 has 15 MA's), (35, 35138), (39, 35204), (64, 35369), (72, 35396), (84, 35456), (89, 35498), (91, 35504), (99, 35558), (103, 35603), (105, 35618), (107, 35645),

Gene: Mossy_69 Start: 48724, Stop: 49308, Start Num: 29

Candidate Starts for Mossy_69:

(Start: 29 @48724 has 40 MA's), (37, 48799), (62, 48994), (76, 49054), (84, 49102), (87, 49132), (93, 49156),

Gene: MrAaronian_64 Start: 41914, Stop: 42492, Start Num: 23

Candidate Starts for MrAaronian_64:

(Start: 23 @41914 has 37 MA's), (33, 41962), (34, 41968), (36, 41986), (45, 42064), (46, 42067), (51, 42094), (59, 42187), (60, 42190), (69, 42226), (78, 42253), (95, 42361),

Gene: Mudcat_64 Start: 43636, Stop: 44130, Start Num: 25

Candidate Starts for Mudcat_64:

(Start: 25 @43636 has 19 MA's), (38, 43732), (40, 43756), (45, 43783), (57, 43891), (68, 43930), (76, 43957), (84, 44005),

Gene: Mysticmoon_70 Start: 48698, Stop: 49282, Start Num: 28

Candidate Starts for Mysticmoon_70:

(19, 48632), (Start: 28 @48698 has 4 MA's), (37, 48773), (39, 48806), (56, 48947), (62, 48968), (63, 48971), (84, 49076), (87, 49106), (93, 49130), (98, 49163),

Gene: Nadmeg_67 Start: 47984, Stop: 48568, Start Num: 29

Candidate Starts for Nadmeg_67:

(4, 47870), (7, 47918), (Start: 21 @47966 has 5 MA's), (Start: 29 @47984 has 40 MA's), (37, 48059), (62, 48254), (84, 48362), (87, 48392), (93, 48416),

Gene: NapoleonB_69 Start: 42793, Stop: 43287, Start Num: 25

Candidate Starts for NapoleonB_69:

(Start: 25 @42793 has 19 MA's), (38, 42889), (39, 42910), (40, 42913), (45, 42940), (57, 43048), (68, 43087), (76, 43114), (84, 43162),

Gene: Nason_68 Start: 42977, Stop: 43471, Start Num: 25

Candidate Starts for Nason_68:

(6, 42839), (11, 42887), (Start: 25 @42977 has 19 MA's), (38, 43073), (45, 43124), (57, 43232), (58, 43235), (66, 43265), (68, 43271), (87, 43376),

Gene: Natasha_65 Start: 41855, Stop: 42442, Start Num: 23

Candidate Starts for Natasha_65:

(Start: 23 @41855 has 37 MA's), (36, 41927), (45, 42005), (52, 42071), (53, 42083), (59, 42128), (69, 42182), (76, 42203), (77, 42206), (78, 42209),

Gene: Navi1117_69 Start: 43066, Stop: 43653, Start Num: 22

Candidate Starts for Navi1117_69:

(Start: 22 @43066 has 8 MA's), (35, 43129), (40, 43195), (45, 43222), (50, 43249), (59, 43342), (69, 43381), (96, 43522), (99, 43552), (105, 43606),

Gene: Nightmare_62 Start: 44420, Stop: 44995, Start Num: 23

Candidate Starts for Nightmare_62:

(Start: 23 @44420 has 37 MA's), (32, 44456), (44, 44567), (45, 44570), (59, 44684), (69, 44738), (72, 44747), (74, 44750), (92, 44858),

Gene: Niktson_60 Start: 43878, Stop: 44453, Start Num: 23

Candidate Starts for Niktson_60:

(Start: 23 @43878 has 37 MA's), (32, 43914), (44, 44025), (45, 44028), (59, 44142), (69, 44196), (72, 44205), (74, 44208), (92, 44316), (95, 44331), (105, 44433),

Gene: Nithya_66 Start: 46904, Stop: 47485, Start Num: 29

Candidate Starts for Nithya_66:

(4, 46790), (7, 46838), (Start: 29 @46904 has 40 MA's), (37, 46979), (61, 47171), (62, 47174), (84, 47282), (87, 47312), (93, 47336),

Gene: Nivinsha_62 Start: 43375, Stop: 43950, Start Num: 23

Candidate Starts for Nivinsha_62:

(Start: 23 @43375 has 37 MA's), (32, 43411), (44, 43522), (45, 43525), (59, 43639), (69, 43693), (72, 43702), (92, 43813), (105, 43930),

Gene: NoPickles_67 Start: 46622, Stop: 47209, Start Num: 29

Candidate Starts for NoPickles_67:

(Start: 29 @46622 has 40 MA's), (32, 46646), (37, 46697), (45, 46760), (62, 46892), (79, 46967), (80, 46973), (84, 47000), (87, 47030), (99, 47102),

Gene: Odesza_67 Start: 47138, Stop: 47725, Start Num: 29

Candidate Starts for Odesza_67:

(Start: 29 @47138 has 40 MA's), (32, 47162), (37, 47213), (39, 47246), (45, 47276), (56, 47387), (62, 47408), (79, 47483), (84, 47516), (87, 47546), (98, 47603), (99, 47618),

Gene: OhMyWard_65 Start: 48483, Stop: 49067, Start Num: 29

Candidate Starts for OhMyWard_65:

(Start: 29 @48483 has 40 MA's), (37, 48558), (45, 48621), (61, 48750), (62, 48753), (76, 48813), (84, 48861), (87, 48891), (93, 48915),

Gene: OlgasClover_67 Start: 48040, Stop: 48621, Start Num: 29

Candidate Starts for OlgasClover_67:

(Start: 21 @48022 has 5 MA's), (Start: 29 @48040 has 40 MA's), (37, 48115), (61, 48307), (62, 48310), (82, 48397), (84, 48418), (87, 48448), (93, 48472),

Gene: Paella_118 Start: 65767, Stop: 66369, Start Num: 22

Candidate Starts for Paella_118:

(10, 65677), (Start: 22 @65767 has 8 MA's), (45, 65920), (69, 66088), (87, 66187), (90, 66202), (92, 66208),

Gene: Pepy6_077 Start: 58658, Stop: 59239, Start Num: 29

Candidate Starts for Pepy6_077:

(Start: 29 @58658 has 40 MA's), (37, 58736), (42, 58787), (61, 58928), (62, 58931), (69, 58970), (84, 59039), (87, 59069), (106, 59222),

Gene: Perkunas_70 Start: 47540, Stop: 48130, Start Num: 28

Candidate Starts for Perkunas_70:

(12, 47519), (Start: 28 @47540 has 4 MA's), (32, 47564), (37, 47615), (39, 47648), (56, 47789), (62, 47810), (79, 47885), (84, 47918), (87, 47948), (99, 48020),

Gene: Petite_70 Start: 48710, Stop: 49300, Start Num: 28

Candidate Starts for Petite_70:

(12, 48689), (Start: 28 @48710 has 4 MA's), (32, 48734), (37, 48785), (39, 48818), (45, 48848), (62, 48980), (74, 49031), (79, 49055), (84, 49088), (87, 49118), (99, 49190),

Gene: Phaby_66 Start: 44410, Stop: 45006, Start Num: 21

Candidate Starts for Phaby_66:

(Start: 21 @44410 has 5 MA's), (32, 44452), (45, 44566), (72, 44743), (92, 44854),

Gene: Phaila_68 Start: 42289, Stop: 42876, Start Num: 22

Candidate Starts for Phaila_68:

(Start: 22 @42289 has 8 MA's), (35, 42352), (40, 42418), (45, 42445), (50, 42472), (59, 42565), (69, 42604), (96, 42745), (99, 42775), (105, 42829),

Gene: Phepper_67 Start: 46995, Stop: 47579, Start Num: 29

Candidate Starts for Phepper_67:

(Start: 21 @46977 has 5 MA's), (Start: 29 @46995 has 40 MA's), (37, 47070), (61, 47262), (62, 47265), (66, 47292), (87, 47403), (93, 47427),

Gene: Pherobrine_69 Start: 48757, Stop: 49341, Start Num: 29

Candidate Starts for Pherobrine_69:

(17, 48685), (Start: 29 @48757 has 40 MA's), (37, 48832), (39, 48865), (56, 49006), (62, 49027), (84, 49135), (87, 49165), (93, 49189),

Gene: PherryCruz_45 Start: 35270, Stop: 35851, Start Num: 24

Candidate Starts for PherryCruz_45:

(10, 35177), (Start: 24 @35270 has 15 MA's), (35, 35327), (39, 35393), (64, 35558), (72, 35585), (84, 35645), (89, 35687), (91, 35693), (99, 35747), (107, 35834),

Gene: Pippin15_59 Start: 40275, Stop: 40889, Start Num: 15

Candidate Starts for Pippin15_59:

(Start: 15 @40275 has 4 MA's), (Start: 25 @40341 has 19 MA's), (32, 40374), (48, 40503), (53, 40563), (70, 40650), (83, 40716), (85, 40734),

Gene: Poco6_075 Start: 59837, Stop: 60418, Start Num: 29

Candidate Starts for Poco6_075:

(Start: 29 @59837 has 40 MA's), (37, 59912), (46, 59978), (61, 60104), (62, 60107), (69, 60146), (72, 60155), (76, 60167), (84, 60215), (87, 60245), (106, 60401),

Gene: Powelldog_67 Start: 42322, Stop: 42906, Start Num: 23

Candidate Starts for Powelldog_67:

(Start: 23 @42322 has 37 MA's), (36, 42394), (45, 42472), (59, 42595), (69, 42649), (76, 42670), (77, 42673), (78, 42676), (94, 42775),

Gene: ProfFrink_64 Start: 41909, Stop: 42487, Start Num: 23

Candidate Starts for ProfFrink_64:

(Start: 23 @41909 has 37 MA's), (33, 41957), (34, 41963), (36, 41981), (45, 42059), (46, 42062), (51, 42089), (59, 42182), (69, 42221), (78, 42248), (95, 42356),

Gene: Qui_118 Start: 65767, Stop: 66369, Start Num: 22

Candidate Starts for Qui_118:

(10, 65677), (Start: 22 @65767 has 8 MA's), (45, 65920), (69, 66088), (87, 66187), (90, 66202), (92, 66208),

Gene: Raunak_65 Start: 41570, Stop: 42148, Start Num: 23

Candidate Starts for Raunak_65:

(Start: 23 @41570 has 37 MA's), (33, 41618), (34, 41624), (36, 41642), (45, 41720), (46, 41723), (51, 41750), (59, 41843), (60, 41846), (69, 41882), (78, 41909), (95, 42017),

Gene: RavenPuff_46 Start: 35293, Stop: 35874, Start Num: 24

Candidate Starts for RavenPuff_46:

(10, 35200), (Start: 24 @35293 has 15 MA's), (35, 35350), (39, 35416), (64, 35581), (72, 35608), (84, 35668), (89, 35710), (91, 35716), (99, 35770), (107, 35857),

Gene: Renaldo_72 Start: 44085, Stop: 44669, Start Num: 22

Candidate Starts for Renaldo_72:

(Start: 22 @44085 has 8 MA's), (45, 44238), (50, 44265), (59, 44358), (69, 44397), (87, 44496), (96, 44538), (99, 44568), (105, 44622),

Gene: Rickmore_63 Start: 45423, Stop: 46004, Start Num: 29

Candidate Starts for Rickmore_63:

(Start: 21 @45405 has 5 MA's), (Start: 29 @45423 has 40 MA's), (37, 45498), (56, 45672), (61, 45690), (62, 45693), (82, 45780), (84, 45801), (87, 45831), (93, 45855),

Gene: Roney_68 Start: 47304, Stop: 47891, Start Num: 29

Candidate Starts for Roney_68:

(Start: 29 @47304 has 40 MA's), (32, 47328), (37, 47379), (39, 47412), (45, 47442), (56, 47553), (62, 47574), (79, 47649), (84, 47682), (87, 47712), (98, 47769), (99, 47784),

Gene: RosaAsantewaa_43 Start: 34545, Stop: 35060, Start Num: 30

Candidate Starts for RosaAsantewaa_43:

(Start: 30 @34545 has 1 MA's), (40, 34656), (45, 34683), (59, 34797), (65, 34827), (98, 34998),

Gene: Runhaar_66 Start: 46805, Stop: 47389, Start Num: 29

Candidate Starts for Runhaar_66:

(4, 46691), (7, 46739), (Start: 21 @46787 has 5 MA's), (Start: 29 @46805 has 40 MA's), (37, 46880), (62, 47075), (84, 47183), (87, 47213), (93, 47237),

Gene: RustyBoy_66 Start: 42054, Stop: 42641, Start Num: 23

Candidate Starts for RustyBoy_66:

(Start: 23 @42054 has 37 MA's), (36, 42126), (45, 42204), (53, 42282), (59, 42327), (69, 42381), (76, 42402), (77, 42405), (78, 42408),

Gene: Salk_64 Start: 41912, Stop: 42490, Start Num: 23

Candidate Starts for Salk_64:

(Start: 23 @41912 has 37 MA's), (33, 41960), (34, 41966), (36, 41984), (45, 42062), (46, 42065), (51, 42092), (59, 42185), (60, 42188), (69, 42224), (78, 42251), (95, 42359),

Gene: Scap1_45 Start: 34871, Stop: 35452, Start Num: 24

Candidate Starts for Scap1_45:

(10, 34778), (Start: 24 @34871 has 15 MA's), (35, 34928), (41, 35000), (72, 35186), (80, 35219), (89, 35288), (91, 35294), (99, 35348), (100, 35357),

Gene: Schwartz33_68 Start: 47476, Stop: 48054, Start Num: 29

Candidate Starts for Schwartz33_68:

(5, 47380), (9, 47416), (Start: 29 @47476 has 40 MA's), (31, 47497), (32, 47500), (37, 47551), (61, 47743), (62, 47746), (76, 47806), (82, 47833), (93, 47908), (102, 47998),

Gene: ScienceWizSam_61 Start: 43537, Stop: 44112, Start Num: 23

Candidate Starts for ScienceWizSam_61:

(Start: 23 @43537 has 37 MA's), (32, 43573), (44, 43684), (45, 43687), (59, 43801), (69, 43855), (72, 43864), (92, 43975),

Gene: Secretariat_66 Start: 46436, Stop: 47020, Start Num: 29

Candidate Starts for Secretariat_66:

(Start: 29 @46436 has 40 MA's), (31, 46457), (37, 46511), (62, 46706), (80, 46787), (82, 46793), (101, 46928), (102, 46964),

Gene: Serenabean_58 Start: 40188, Stop: 40733, Start Num: 24

Candidate Starts for Serenabean_58:

(Start: 24 @40188 has 15 MA's), (35, 40245), (43, 40329), (59, 40461),

Gene: ShaggyRogers_69 Start: 46784, Stop: 47368, Start Num: 29

Candidate Starts for ShaggyRogers_69:

(Start: 29 @46784 has 40 MA's), (37, 46859), (56, 47033), (62, 47054), (82, 47141), (84, 47162), (87, 47192), (93, 47216),

Gene: SheRa_46 Start: 35151, Stop: 35732, Start Num: 24

Candidate Starts for SheRa_46:

(10, 35058), (Start: 24 @35151 has 15 MA's), (35, 35208), (39, 35274), (64, 35439), (72, 35466), (84, 35526), (89, 35568), (91, 35574), (92, 35577), (99, 35628), (103, 35673), (105, 35688), (107, 35715),

Gene: Shepard_66 Start: 43711, Stop: 44301, Start Num: 23

Candidate Starts for Shepard_66:

(Start: 23 @43711 has 37 MA's), (32, 43747), (45, 43861), (72, 44038), (92, 44149),

Gene: Shiba_63 Start: 41570, Stop: 42148, Start Num: 23

Candidate Starts for Shiba_63:

(Start: 23 @41570 has 37 MA's), (33, 41618), (34, 41624), (36, 41642), (45, 41720), (46, 41723), (51, 41750), (59, 41843), (60, 41846), (69, 41882), (78, 41909), (95, 42017),

Gene: Sloopyjoe_64 Start: 41916, Stop: 42494, Start Num: 23

Candidate Starts for Sloopyjoe_64:

(Start: 23 @41916 has 37 MA's), (33, 41964), (34, 41970), (36, 41988), (45, 42066), (46, 42069), (51, 42096), (59, 42189), (60, 42192), (69, 42228), (78, 42255), (95, 42363),

Gene: Sporto_63 Start: 43022, Stop: 43609, Start Num: 23

Candidate Starts for Sporto_63:

(Start: 23 @43022 has 37 MA's), (36, 43094), (45, 43172), (59, 43295), (69, 43349), (76, 43370), (77, 43373), (78, 43376), (94, 43475), (105, 43571),

Gene: StarLord_64 Start: 41909, Stop: 42487, Start Num: 23

Candidate Starts for StarLord_64:

(Start: 23 @41909 has 37 MA's), (33, 41957), (34, 41963), (36, 41981), (45, 42059), (46, 42062), (51, 42089), (59, 42182), (60, 42185), (69, 42221), (78, 42248), (95, 42356),

Gene: Stayer_64 Start: 41912, Stop: 42490, Start Num: 23

Candidate Starts for Stayer_64:

(Start: 23 @41912 has 37 MA's), (33, 41960), (34, 41966), (36, 41984), (45, 42062), (46, 42065), (51, 42092), (59, 42185), (60, 42188), (69, 42224), (78, 42251), (95, 42359),

Gene: Sunny4976_62 Start: 43553, Stop: 44128, Start Num: 27

Candidate Starts for Sunny4976_62:

(Start: 15 @43484 has 4 MA's), (27, 43553), (47, 43709), (59, 43820), (72, 43868), (80, 43901), (86, 43955), (90, 43973),

Gene: Sweetclover_57 Start: 39196, Stop: 39726, Start Num: 24

Candidate Starts for Sweetclover_57:

(Start: 24 @39196 has 15 MA's), (35, 39253), (59, 39469), (85, 39598),

Gene: Synopsis_59 Start: 43542, Stop: 44117, Start Num: 23

Candidate Starts for Synopsis_59:

(Start: 23 @43542 has 37 MA's), (32, 43578), (44, 43689), (45, 43692), (59, 43806), (69, 43860), (72, 43869), (92, 43980),

Gene: Talon44_71 Start: 47574, Stop: 48161, Start Num: 28

Candidate Starts for Talon44_71:

(Start: 28 @47574 has 4 MA's), (32, 47598), (37, 47649), (45, 47712), (62, 47844), (79, 47919), (80, 47925), (84, 47952), (87, 47982), (99, 48054),

Gene: Tanis_68 Start: 47124, Stop: 47711, Start Num: 29

Candidate Starts for Tanis_68:

(Start: 29 @47124 has 40 MA's), (32, 47148), (37, 47199), (39, 47232), (45, 47262), (56, 47373), (62, 47394), (79, 47469), (84, 47502), (87, 47532), (98, 47589), (99, 47604),

Gene: Tatanka_57 Start: 43674, Stop: 44249, Start Num: 23

Candidate Starts for Tatanka_57:

(Start: 23 @43674 has 37 MA's), (32, 43710), (44, 43821), (45, 43824), (59, 43938), (69, 43992), (72, 44001), (74, 44004), (92, 44112),

Gene: Teacup_61 Start: 43957, Stop: 44532, Start Num: 23

Candidate Starts for Teacup_61:

(Start: 23 @43957 has 37 MA's), (32, 43993), (44, 44104), (45, 44107), (59, 44221), (69, 44275), (72, 44284), (74, 44287), (92, 44395), (95, 44410), (105, 44512),

Gene: TenaciousP_66 Start: 48412, Stop: 48993, Start Num: 29

Candidate Starts for TenaciousP_66:

(Start: 29 @48412 has 40 MA's), (37, 48487), (56, 48661), (62, 48682), (82, 48769), (84, 48790), (87, 48820), (93, 48844),

Gene: Tenney120_69 Start: 42822, Stop: 43409, Start Num: 22

Candidate Starts for Tenney120_69:

(Start: 22 @42822 has 8 MA's), (35, 42885), (40, 42951), (45, 42978), (50, 43005), (59, 43098), (69, 43137), (96, 43278), (99, 43308), (105, 43362),

Gene: Tenno_61 Start: 44195, Stop: 44770, Start Num: 23

Candidate Starts for Tenno_61:

(Start: 23 @44195 has 37 MA's), (32, 44231), (44, 44342), (45, 44345), (69, 44513), (72, 44522), (74, 44525), (92, 44633), (95, 44648), (105, 44750),

Gene: Tokki_69 Start: 44065, Stop: 44655, Start Num: 23

Candidate Starts for Tokki_69:

(Start: 23 @44065 has 37 MA's), (32, 44101), (45, 44215), (69, 44383), (72, 44392), (92, 44503),

Gene: Tribby_71 Start: 43164, Stop: 43658, Start Num: 25

Candidate Starts for Tribby_71:

(Start: 25 @43164 has 19 MA's), (45, 43311), (57, 43419), (66, 43452), (68, 43458), (87, 43563),

Gene: TrixiePhattel_68 Start: 42452, Stop: 43036, Start Num: 22

Candidate Starts for TrixiePhattel_68:

(Start: 22 @42452 has 8 MA's), (40, 42578), (45, 42605), (50, 42632), (59, 42725), (69, 42764), (96, 42905), (99, 42935), (105, 42989),

Gene: Truckee_62 Start: 43782, Stop: 44372, Start Num: 23

Candidate Starts for Truckee_62:

(Start: 23 @43782 has 37 MA's), (32, 43818), (45, 43932), (58, 44043), (72, 44109), (92, 44220),

Gene: Trufflozitus_72 Start: 47812, Stop: 48399, Start Num: 29

Candidate Starts for Trufflozitus_72:

(Start: 29 @47812 has 40 MA's), (32, 47836), (37, 47887), (45, 47950), (56, 48061), (62, 48082), (79, 48157), (84, 48190), (87, 48220), (99, 48292),

Gene: Trustiboi_60 Start: 43797, Stop: 44372, Start Num: 23

Candidate Starts for Trustiboi_60:

(Start: 23 @43797 has 37 MA's), (32, 43833), (44, 43944), (45, 43947), (59, 44061), (69, 44115), (72, 44124), (74, 44127), (92, 44235),

Gene: Untouchable_68 Start: 47995, Stop: 48579, Start Num: 29

Candidate Starts for Untouchable_68:

(Start: 21 @47977 has 5 MA's), (Start: 29 @47995 has 40 MA's), (37, 48070), (61, 48262), (62, 48265), (84, 48373), (87, 48403), (93, 48427),

Gene: Uzumaki_63 Start: 42263, Stop: 42850, Start Num: 22

Candidate Starts for Uzumaki_63:

(Start: 22 @42263 has 8 MA's), (35, 42326), (40, 42392), (45, 42419), (50, 42446), (59, 42539), (69, 42578), (82, 42626), (96, 42719), (99, 42749), (105, 42803),

Gene: Vardy_65 Start: 46695, Stop: 47279, Start Num: 29

Candidate Starts for Vardy_65:

(4, 46581), (7, 46629), (Start: 21 @46677 has 5 MA's), (Start: 29 @46695 has 40 MA's), (37, 46770), (62, 46965), (84, 47073), (87, 47103), (93, 47127),

Gene: Xenomorph_64 Start: 42648, Stop: 43142, Start Num: 25

Candidate Starts for Xenomorph_64:

(6, 42510), (11, 42558), (Start: 25 @42648 has 19 MA's), (38, 42744), (45, 42795), (57, 42903), (58, 42906), (66, 42936), (68, 42942), (87, 43047),

Gene: Yotsuba_59 Start: 43647, Stop: 44267, Start Num: 15

Candidate Starts for Yotsuba_59:

(Start: 15 @43647 has 4 MA's), (Start: 25 @43716 has 19 MA's), (32, 43749), (48, 43878), (53, 43938), (83, 44091), (85, 44109),

Gene: Zeina_68 Start: 42957, Stop: 43544, Start Num: 22

Candidate Starts for Zeina_68:

(Start: 22 @42957 has 8 MA's), (35, 43020), (40, 43086), (45, 43113), (50, 43140), (59, 43233), (69, 43272), (96, 43413), (99, 43443), (104, 43488), (105, 43497),

Gene: Zeph_68 Start: 47834, Stop: 48418, Start Num: 29

Candidate Starts for Zeph_68:

(4, 47720), (7, 47768), (Start: 21 @47816 has 5 MA's), (Start: 29 @47834 has 40 MA's), (37, 47909), (61, 48101), (62, 48104), (84, 48212), (87, 48242), (93, 48266),

Gene: Zippen_65 Start: 44476, Stop: 45057, Start Num: 21

Candidate Starts for Zippen_65:

(Start: 21 @44476 has 5 MA's), (32, 44518), (44, 44629), (45, 44632), (72, 44809), (92, 44920),