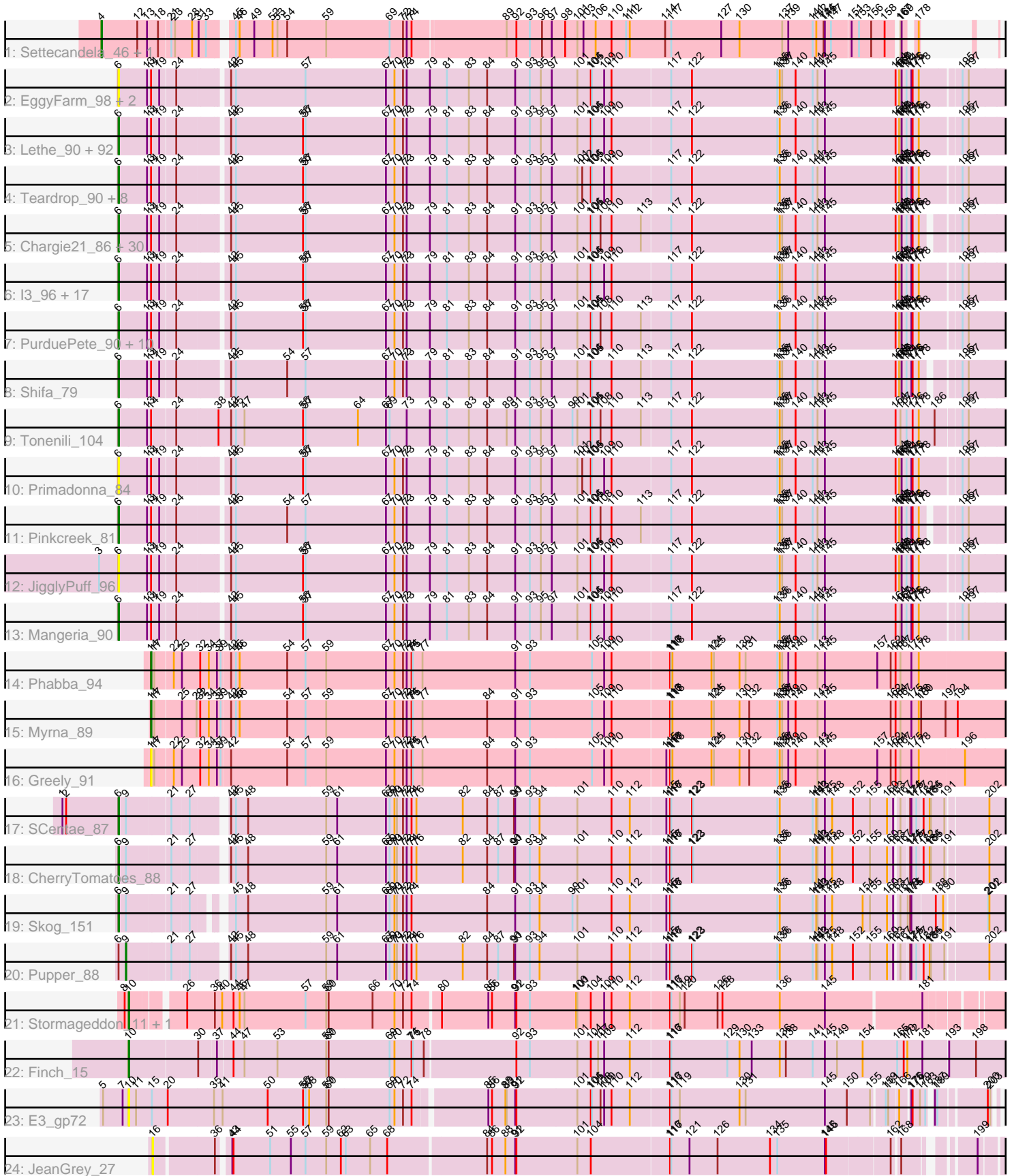


# Zoomed Pham 204832



Note: Tracks are now grouped by subcluster and scaled. Switching in subcluster is indicated by changes in track color. Track scale is now set by default to display the region 30 bp upstream of start 1 to 30 bp downstream of the last possible start. If this default region is judged to be packed too tightly with annotated starts, the track will be further scaled to only show that region of the ORF with annotated starts. This action will be indicated by adding "Zoomed" to the title. For starts, yellow indicates the location of called starts comprised solely of Glimmer/GeneMark auto-annotations, green indicates the location of called starts with at least 1 manual gene annotation.

## Pham 204832 Report

This analysis was run 02/22/25 on database version 588.

Pham number 204832 has 185 members, 26 are drafts.

Phages represented in each track:

- Track 1 : Settecandela\_46, Phrappuccino\_46
- Track 2 : EggyFarm\_98, Grasshills\_97, BigCity\_98
- Track 3 : Lethe\_90, Belieber\_84, JulietS\_83, Bxz1\_89, Shrimp\_90, Ngannou\_86, Iota\_84, Yucca\_90, Salacia\_94, Pivoine\_89, Guwapp\_89, Lee7\_88, Ronan\_83, MikeLiesIn\_91, Amataga\_90, Caravan\_85, Pleione\_93, Naija\_89, Ghost\_89, Ewok\_91, ParkTD\_91, DTDevon\_91, Grungle\_77, Concombre\_97, EmToTheThree\_93, ValleyTerrace\_90, Blackdragon\_84, Kamryn\_90, LRRHood\_84, SilverDipper\_91, Audrick\_92, Babyland\_90, Sauce\_90, Cali\_85, Loanshark\_90, Willis\_91, NedWong\_91, Naval22\_95, Khaleesi\_89, InigoMontoya\_91, LinStu\_90, GlutenPhree\_88, Tainan\_95, TinyTim\_90, DrPhinkDaddy\_89, Bipolarisk\_89, FoxtrotP1\_90, Yassified\_86, Demodog\_97, Momo\_89, Norm\_91, SrishMeg2525\_89, Izajani\_90, Lukilu\_81, Phusco\_90, QBert\_84, Jessibeth14\_89, EmmaElysia\_89, Delylah\_93, Erdmann\_91, Bonray\_90, Latch\_90, Tortoise16\_88, Gamgam\_90, Zalkecks\_91, YemiJoy2021\_91, Megamind\_89, Fongie\_88, Koguma\_86, Issimir\_89, Shelob\_92, Delilah\_90, Patter\_90, Zeenon\_92, Ava3\_91, FudgeTart\_90, Sprinklers\_85, Daffodil\_95, Halldule\_83, Breeniome\_90, Burrough\_90, ZygoTaiga\_89, Roots515\_89, Atlantean\_89, Dandelion\_97, CharlieB\_85, Phlegm\_92, YoungMoneyMata\_90, Shaqnato\_82, Sebata\_91, MoMoMixon\_91, Gabriel\_92, McGee\_91
- Track 4 : Teardrop\_90, Bangla1971\_91, ArcherS7\_89, Specks\_96, Littleton\_90, Drazdys\_90, Astraea\_88, LolaVinca\_92, SmallFry\_90
- Track 5 : Charge21\_86, Flabslab\_85, ChaylaJr\_85, ErnieJ\_86, Fludd\_90, Basquiat\_86, BackyardAgain\_87, StubbySaigey\_92, Melpomini\_84, DeejaClivia\_79, ScottMcG\_87, Phox\_87, Catera\_88, Ablatia\_86, ChickenPhender\_86, Morizzled23\_90, HyRo\_82, Kboogie\_93, Spud\_90, Janiyra\_92, Alice\_83, Quasimodo\_90, Rabinovish\_87, Turret\_85, JustHall\_86, Blackbrain\_85, Trinitium\_86, Cactojaque\_85, Dietrick\_82, Stubby\_83, EasyJones\_93
- Track 6 : I3\_96, FrayBell\_96, DirtMonster\_83, BananaFence\_89, IkeLoa\_84, Bigswole\_95, Nappy\_92, BadAgartude\_87, Domi\_84, StephanieG\_89, InterFolia\_99, NoodleTree\_98, Darko\_90, LordLeafolot\_95, Mikro\_88, NuevoMundo\_96, Jezreel\_88, RoMag\_85
- Track 7 : PurduePete\_90, Napoleon13\_86, Bread\_90, Asterius\_93, SVoro\_88, Capablanca\_92, McWolfish\_88, Maby2021\_90, Wally\_89, Nidhogg\_91, Rizal\_88
- Track 8 : Shifa\_79
- Track 9 : Tonenili\_104
- Track 10 : Primadonna\_84
- Track 11 : Pinkcreek\_81

- Track 12 : JigglyPuff\_96
- Track 13 : Mangeria\_90
- Track 14 : Phabba\_94
- Track 15 : Myrna\_89
- Track 16 : Greely\_91
- Track 17 : SCentae\_87
- Track 18 : CherryTomatoes\_88
- Track 19 : Skog\_151
- Track 20 : Pupper\_88
- Track 21 : Stormageddon\_11, RedWattleHog\_11
- Track 22 : Finch\_15
- Track 23 : E3\_gp72
- Track 24 : JeanGrey\_27

***Summary of Final Annotations (See graph section above for start numbers):***

The start number called the most often in the published annotations is 6, it was called in 151 of the 159 non-draft genes in the pham.

Genes that call this "Most Annotated" start:

- Ablatia\_86, Alice\_83, Amataga\_90, ArcherS7\_89, Asterius\_93, Astraea\_88, Atlantean\_89, Audrick\_92, Ava3\_91, Babyland\_90, BackyardAgain\_87, BadAgartude\_87, BananaFence\_89, Bangla1971\_91, Basquiat\_86, Belieber\_84, BigCity\_98, Bigswole\_95, Bipolarisk\_89, Blackbrain\_85, Blackdragon\_84, Bonray\_90, Bread\_90, Breeniome\_90, Burrough\_90, Bxz1\_89, Cactojaque\_85, Cali\_85, Capablanca\_92, Caravan\_85, Catera\_88, Chargie21\_86, CharlieB\_85, ChaylaJr\_85, CherryTomatoes\_88, ChickenPhender\_86, Concombre\_97, DTDevon\_91, Daffodil\_95, Dandelion\_97, Darko\_90, DeejaClivia\_79, Delilah\_90, Delylah\_93, Demodog\_97, Dietrick\_82, DirtMonster\_83, Domi\_84, DrPhinkDaddy\_89, Drazdys\_90, EasyJones\_93, EggyFarm\_98, EmToTheThree\_93, EmmaElysia\_89, Erdmann\_91, ErnieJ\_86, Ewok\_91, Flabslab\_85, Fludd\_90, Fongie\_88, FoxtrotP1\_90, FrayBell\_96, FudgeTart\_90, Gabriel\_92, Gamgam\_90, Ghost\_89, GlutenPhree\_88, Grasshills\_97, Grungle\_77, Guwapp\_89, Halldule\_83, HyRo\_82, I3\_96, IkeLoa\_84, InigoMontoya\_91, InterFolia\_99, Iota\_84, Issimir\_89, Izajani\_90, Janiyra\_92, Jessibeth14\_89, Jezreel\_88, JigglyPuff\_96, JulietS\_83, JustHall\_86, Kamryn\_90, Kboogie\_93, Khaleesi\_89, Koguma\_86, LRRHood\_84, Latch\_90, Lee7\_88, Lethe\_90, LinStu\_90, Littleton\_90, Loanshark\_90, LolaVinca\_92, LordLeafolot\_95, Lukilu\_81, Maby2021\_90, Mangeria\_90, McGee\_91, McWolfish\_88, Megamind\_89, Melpomini\_84, MikeLiesIn\_91, Mikro\_88, MoMoMixon\_91, Momo\_89, Morizzled23\_90, Naija\_89, Napoleon13\_86, Nappy\_92, Naval22\_95, NedWong\_91, Ngannou\_86, Nidhogg\_91, NoodleTree\_98, Norm\_91, NuevoMundo\_96, ParkTD\_91, Patter\_90, Phlegm\_92, Phox\_87, Phusco\_90, Pinkcreek\_81, Pivoine\_89, Pleione\_93, Primadonna\_84, PurduePete\_90, QBert\_84, Quasimodo\_90, Rabinovish\_87, Rizal\_88, RoMag\_85, Ronan\_83, Roots515\_89, SCentae\_87, SVoro\_88, Salacia\_94, Sauce\_90, ScottMcG\_87, Sebata\_91, Shaqnato\_82, Shelob\_92, Shifa\_79, Shrimp\_90, SilverDipper\_91, Skog\_151, SmallFry\_90, Specks\_96, Sprinklers\_85, Spud\_90, SrishMeg2525\_89, StephanieG\_89, StubbySaigey\_92, Stubby\_83, Tainan\_95, Teardrop\_90, TinyTim\_90, Tonenili\_104, Tortoise16\_88, Trinitium\_86, Turret\_85, ValleyTerrace\_90, Wally\_89, Willis\_91, Yassified\_86, YemiJoy2021\_91, YoungMoneyMata\_90, Yucca\_90, Zalkecks\_91, Zeenon\_92, ZygoTaiga\_89,

Genes that have the "Most Annotated" start but do not call it:

- Pupper\_88,

Genes that do not have the "Most Annotated" start:

- E3\_gp72, Finch\_15, Greely\_91, JeanGrey\_27, Myrna\_89, Phabba\_94, Phrappuccino\_46, RedWattleHog\_11, Settecandela\_46, Stormageddon\_11,

### Summary by start number:

Start 4:

- Found in 2 of 185 ( 1.1% ) of genes in pham
- Manual Annotations of this start: 2 of 159
- Called 100.0% of time when present
- Phage (with cluster) where this start called: Phrappuccino\_46 (AA), Settecandela\_46 (AA),

Start 6:

- Found in 175 of 185 ( 94.6% ) of genes in pham
- Manual Annotations of this start: 151 of 159
- Called 99.4% of time when present
- Phage (with cluster) where this start called: Ablatia\_86 (C1), Alice\_83 (C1), Amataga\_90 (C1), ArcherS7\_89 (C1), Asterius\_93 (C1), Astraea\_88 (C1), Atlantean\_89 (C1), Audrick\_92 (C1), Ava3\_91 (C1), Babyland\_90 (C1), BackyardAgain\_87 (C1), BadAgartude\_87 (C1), BananaFence\_89 (C1), Bangla1971\_91 (C1), Basquiat\_86 (C1), Belieber\_84 (C1), BigCity\_98 (C1), Bigswole\_95 (C1), Bipolarisk\_89 (C1), Blackbrain\_85 (C1), Blackdragon\_84 (C1), Bonray\_90 (C1), Bread\_90 (C1), Breeniome\_90 (C1), Burrough\_90 (C1), Bxz1\_89 (C1), Cactojaque\_85 (C1), Cali\_85 (C1), Capablanca\_92 (C1), Caravan\_85 (C1), Catera\_88 (C1), Chargie21\_86 (C1), CharlieB\_85 (C1), ChaylaJr\_85 (C1), CherryTomatoes\_88 (DO), ChickenPhender\_86 (C1), Concombre\_97 (C1), DTDevon\_91 (C1), Daffodil\_95 (C1), Dandelion\_97 (C1), Darko\_90 (C1), DeejaClivia\_79 (C1), Delilah\_90 (C1), Delylah\_93 (C1), Demodog\_97 (C1), Dietrick\_82 (C1), DirtMonster\_83 (C1), Domi\_84 (C1), DrPhinkDaddy\_89 (C1), Drazdys\_90 (C1), EasyJones\_93 (C1), EggyFarm\_98 (C1), EmToTheThree\_93 (C1), EmmaElysia\_89 (C1), Erdmann\_91 (C1), ErnieJ\_86 (C1), Ewok\_91 (C1), Flabslab\_85 (C1), Fludd\_90 (C1), Fongie\_88 (C1), FoxtrotP1\_90 (C1), FrayBell\_96 (C1), FudgeTart\_90 (C1), Gabriel\_92 (C1), Gamgam\_90 (C1), Ghost\_89 (C1), GlutenPhree\_88 (C1), Grasshills\_97 (C1), Grungle\_77 (C1), Guwapp\_89 (C1), Halldule\_83 (C1), HyRo\_82 (C1), I3\_96 (C1), IkeLoa\_84 (C1), InigoMontoya\_91 (C1), InterFolia\_99 (C1), Iota\_84 (C1), Issimir\_89 (C1), Izajani\_90 (C1), Janiyra\_92 (C1), Jessibeth14\_89 (C1), Jezreel\_88 (C1), JigglyPuff\_96 (C1), JulietS\_83 (C1), JustHall\_86 (C1), Kamryn\_90 (C1), Kboogie\_93 (C1), Khaleesi\_89 (C1), Koguma\_86 (C1), LRRHood\_84 (C1), Latch\_90 (C1), Lee7\_88 (C1), Lethe\_90 (C1), LinStu\_90 (C1), Littleton\_90 (C1), Loanshark\_90 (C1), LolaVinca\_92 (C1), LordLeafolot\_95 (C1), Lukilu\_81 (C1), Maby2021\_90 (C1), Mangeria\_90 (C1), McGee\_91 (C1), McWolfish\_88 (C1), Megamind\_89 (C1), Melpomini\_84 (C1), MikeLiesIn\_91 (C1), Mikro\_88 (C1), MoMoMixon\_91 (C1), Momo\_89 (C1), Morizzled23\_90 (C1), Naija\_89 (C1), Napoleon13\_86 (C1), Nappy\_92 (C1), Naval22\_95 (C1), NedWong\_91 (C1), Ngannou\_86 (C1), Nidhogg\_91 (C1), NoodleTree\_98 (C1), Norm\_91 (C1), NuevoMundo\_96 (C1), ParkTD\_91 (C1), Patter\_90 (C1), Phlegm\_92 (C1), Phox\_87 (C1), Phusco\_90 (C1), Pinkcreek\_81 (C1), Pivoine\_89 (C1), Pleione\_93 (C1), Primadonna\_84 (C1), PurduePete\_90 (C1), QBert\_84 (C1), Quasimodo\_90 (C1),

Rabinovish\_87 (C1), Rizal\_88 (C1), RoMag\_85 (C1), Ronan\_83 (C1), Roots515\_89 (C1), SCentae\_87 (DO), SVoro\_88 (C1), Salacia\_94 (C1), Sauce\_90 (C1), ScottMcG\_87 (C1), Sebata\_91 (C1), Shaqnato\_82 (C1), Shelob\_92 (C1), Shifa\_79 (C1), Shrimp\_90 (C1), SilverDipper\_91 (C1), Skog\_151 (DO), SmallFry\_90 (C1), Specks\_96 (C1), Sprinklers\_85 (C1), Spud\_90 (C1), SrishMeg2525\_89 (C1), StephanieG\_89 (C1), StubbySaigey\_92 (C1), Stubby\_83 (C1), Tainan\_95 (C1), Teardrop\_90 (C1), TinyTim\_90 (C1), Tonenili\_104 (C1), Tortoise16\_88 (C1), Trinitium\_86 (C1), Turret\_85 (C1), ValleyTerrace\_90 (C1), Wally\_89 (C1), Willis\_91 (C1), Yassified\_86 (C1), YemiJoy2021\_91 (C1), YoungMoneyMata\_90 (C1), Yucca\_90 (C1), Zalkecks\_91 (C1), Zeenon\_92 (C1), ZygoTaiga\_89 (C1),

#### Start 9:

- Found in 4 of 185 ( 2.2% ) of genes in pham
- Manual Annotations of this start: 1 of 159
- Called 25.0% of time when present
- Phage (with cluster) where this start called: Pupper\_88 (DO),

#### Start 10:

- Found in 4 of 185 ( 2.2% ) of genes in pham
- Manual Annotations of this start: 3 of 159
- Called 100.0% of time when present
- Phage (with cluster) where this start called: E3\_gp72 (singleton), Finch\_15 (singleton), RedWattleHog\_11 (DX), Stormageddon\_11 (DX),

#### Start 14:

- Found in 174 of 185 ( 94.1% ) of genes in pham
- Manual Annotations of this start: 2 of 159
- Called 1.7% of time when present
- Phage (with cluster) where this start called: Greely\_91 (C2), Myrna\_89 (C2), Phabba\_94 (C2),

#### Start 16:

- Found in 1 of 185 ( 0.5% ) of genes in pham
- No Manual Annotations of this start.
- Called 100.0% of time when present
- Phage (with cluster) where this start called: JeanGrey\_27 (singleton),

### **Summary by clusters:**

There are 6 clusters represented in this pham: AA, DO, singleton, DX, C2, C1,

Info for manual annotations of cluster AA:

- Start number 4 was manually annotated 2 times for cluster AA.

Info for manual annotations of cluster C1:

- Start number 6 was manually annotated 148 times for cluster C1.

Info for manual annotations of cluster C2:

- Start number 14 was manually annotated 2 times for cluster C2.

Info for manual annotations of cluster DO:

- Start number 6 was manually annotated 3 times for cluster DO.
- Start number 9 was manually annotated 1 time for cluster DO.

Info for manual annotations of cluster DX:

•Start number 10 was manually annotated 2 times for cluster DX.

### **Gene Information:**

Gene: Ablatia\_86 Start: 34739, Stop: 37342, Start Num: 6

Candidate Starts for Ablatia\_86:

(Start: 6 @34739 has 151 MA's), (13, 34808), (Start: 14 @34814 has 2 MA's), (19, 34832), (24, 34868), (42, 34976), (45, 34988), (56, 35153), (57, 35159), (67, 35354), (70, 35375), (72, 35396), (73, 35405), (79, 35462), (81, 35504), (83, 35558), (84, 35603), (91, 35672), (93, 35708), (95, 35735), (97, 35762), (101, 35822), (104, 35855), (105, 35858), (108, 35879), (110, 35906), (113, 35978), (117, 36047), (122, 36098), (135, 36308), (136, 36314), (137, 36320), (140, 36353), (141, 36395), (143, 36407), (145, 36425), (164, 36599), (166, 36608), (167, 36611), (169, 36614), (171, 36626), (175, 36638), (176, 36641), (178, 36656), (195, 36722), (197, 36737), (212, 36881), (213, 36893), (233, 37073), (236, 37091), (245, 37172), (249, 37208), (251, 37229), (255, 37295),

Gene: Alice\_83 Start: 33887, Stop: 36490, Start Num: 6

Candidate Starts for Alice\_83:

(Start: 6 @33887 has 151 MA's), (13, 33956), (Start: 14 @33962 has 2 MA's), (19, 33980), (24, 34016), (42, 34124), (45, 34136), (56, 34301), (57, 34307), (67, 34502), (70, 34523), (72, 34544), (73, 34553), (79, 34610), (81, 34652), (83, 34706), (84, 34751), (91, 34820), (93, 34856), (95, 34883), (97, 34910), (101, 34970), (104, 35003), (105, 35006), (108, 35027), (110, 35054), (113, 35126), (117, 35195), (122, 35246), (135, 35456), (136, 35462), (137, 35468), (140, 35501), (141, 35543), (143, 35555), (145, 35573), (164, 35747), (166, 35756), (167, 35759), (169, 35762), (171, 35774), (175, 35786), (176, 35789), (178, 35804), (195, 35870), (197, 35885), (212, 36029), (213, 36041), (233, 36221), (236, 36239), (245, 36320), (249, 36356), (251, 36377), (255, 36443),

Gene: Amataga\_90 Start: 35248, Stop: 37872, Start Num: 6

Candidate Starts for Amataga\_90:

(Start: 6 @35248 has 151 MA's), (13, 35317), (Start: 14 @35323 has 2 MA's), (19, 35341), (24, 35377), (42, 35485), (45, 35497), (56, 35662), (57, 35668), (67, 35863), (70, 35884), (72, 35905), (73, 35914), (79, 35971), (81, 36013), (83, 36067), (84, 36112), (91, 36181), (93, 36217), (95, 36244), (97, 36271), (101, 36331), (104, 36364), (105, 36367), (109, 36397), (110, 36415), (117, 36556), (122, 36607), (135, 36817), (136, 36823), (140, 36862), (141, 36904), (143, 36916), (145, 36934), (164, 37108), (166, 37117), (167, 37120), (169, 37123), (171, 37135), (175, 37147), (176, 37150), (178, 37165), (195, 37252), (197, 37267), (212, 37411), (213, 37423), (233, 37603), (236, 37621), (245, 37702), (249, 37738), (251, 37759), (255, 37825),

Gene: ArcherS7\_89 Start: 35566, Stop: 38190, Start Num: 6

Candidate Starts for ArcherS7\_89:

(Start: 6 @35566 has 151 MA's), (13, 35635), (Start: 14 @35641 has 2 MA's), (19, 35659), (24, 35695), (42, 35803), (45, 35815), (56, 35980), (57, 35986), (67, 36181), (70, 36202), (72, 36223), (73, 36232), (79, 36289), (81, 36331), (83, 36385), (84, 36430), (91, 36499), (93, 36535), (95, 36562), (97, 36589), (101, 36649), (102, 36661), (104, 36682), (105, 36685), (109, 36715), (110, 36733), (117, 36874), (122, 36925), (135, 37135), (136, 37141), (140, 37180), (141, 37222), (143, 37234), (145, 37252), (164, 37426), (166, 37435), (167, 37438), (169, 37441), (171, 37453), (175, 37465), (176, 37468), (178, 37483), (195, 37570), (197, 37585), (212, 37729), (213, 37741), (233, 37921), (236, 37939), (245, 38020), (249, 38056), (251, 38077), (255, 38143),

Gene: Asterius\_93 Start: 35551, Stop: 38175, Start Num: 6

Candidate Starts for Asterius\_93:

(Start: 6 @35551 has 151 MA's), (13, 35620), (Start: 14 @35626 has 2 MA's), (19, 35644), (24, 35680), (42, 35788), (45, 35800), (56, 35965), (57, 35971), (67, 36166), (70, 36187), (72, 36208), (73, 36217), (79, 36274), (81, 36316), (83, 36370), (84, 36415), (91, 36484), (93, 36520), (95, 36547), (97, 36574), (101, 36634), (104, 36667), (105, 36670), (108, 36691), (110, 36718), (113, 36790), (117, 36859), (122, 36910), (135, 37120), (136, 37126), (140, 37165), (141, 37207), (143, 37219), (145, 37237), (164, 37411), (166, 37420), (167, 37423), (169, 37426), (171, 37438), (175, 37450), (176, 37453), (178, 37468), (195, 37555), (197, 37570), (212, 37714), (213, 37726), (233, 37906), (236, 37924), (245, 38005), (249, 38041), (251, 38062), (255, 38128),

Gene: Astraea\_88 Start: 35427, Stop: 38051, Start Num: 6

Candidate Starts for Astraea\_88:

(Start: 6 @35427 has 151 MA's), (13, 35496), (Start: 14 @35502 has 2 MA's), (19, 35520), (24, 35556), (42, 35664), (45, 35676), (56, 35841), (57, 35847), (67, 36042), (70, 36063), (72, 36084), (73, 36093), (79, 36150), (81, 36192), (83, 36246), (84, 36291), (91, 36360), (93, 36396), (95, 36423), (97, 36450), (101, 36510), (102, 36522), (104, 36543), (105, 36546), (109, 36576), (110, 36594), (117, 36735), (122, 36786), (135, 36996), (136, 37002), (140, 37041), (141, 37083), (143, 37095), (145, 37113), (164, 37287), (166, 37296), (167, 37299), (169, 37302), (171, 37314), (175, 37326), (176, 37329), (178, 37344), (195, 37431), (197, 37446), (212, 37590), (213, 37602), (233, 37782), (236, 37800), (245, 37881), (249, 37917), (251, 37938), (255, 38004),

Gene: Atlantean\_89 Start: 35248, Stop: 37872, Start Num: 6

Candidate Starts for Atlantean\_89:

(Start: 6 @35248 has 151 MA's), (13, 35317), (Start: 14 @35323 has 2 MA's), (19, 35341), (24, 35377), (42, 35485), (45, 35497), (56, 35662), (57, 35668), (67, 35863), (70, 35884), (72, 35905), (73, 35914), (79, 35971), (81, 36013), (83, 36067), (84, 36112), (91, 36181), (93, 36217), (95, 36244), (97, 36271), (101, 36331), (104, 36364), (105, 36367), (109, 36397), (110, 36415), (117, 36556), (122, 36607), (135, 36817), (136, 36823), (140, 36862), (141, 36904), (143, 36916), (145, 36934), (164, 37108), (166, 37117), (167, 37120), (169, 37123), (171, 37135), (175, 37147), (176, 37150), (178, 37165), (195, 37252), (197, 37267), (212, 37411), (213, 37423), (233, 37603), (236, 37621), (245, 37702), (249, 37738), (251, 37759), (255, 37825),

Gene: Audrick\_92 Start: 35227, Stop: 37851, Start Num: 6

Candidate Starts for Audrick\_92:

(Start: 6 @35227 has 151 MA's), (13, 35296), (Start: 14 @35302 has 2 MA's), (19, 35320), (24, 35356), (42, 35464), (45, 35476), (56, 35641), (57, 35647), (67, 35842), (70, 35863), (72, 35884), (73, 35893), (79, 35950), (81, 35992), (83, 36046), (84, 36091), (91, 36160), (93, 36196), (95, 36223), (97, 36250), (101, 36310), (104, 36343), (105, 36346), (109, 36376), (110, 36394), (117, 36535), (122, 36586), (135, 36796), (136, 36802), (140, 36841), (141, 36883), (143, 36895), (145, 36913), (164, 37087), (166, 37096), (167, 37099), (169, 37102), (171, 37114), (175, 37126), (176, 37129), (178, 37144), (195, 37231), (197, 37246), (212, 37390), (213, 37402), (233, 37582), (236, 37600), (245, 37681), (249, 37717), (251, 37738), (255, 37804),

Gene: Ava3\_91 Start: 35924, Stop: 38548, Start Num: 6

Candidate Starts for Ava3\_91:

(Start: 6 @35924 has 151 MA's), (13, 35993), (Start: 14 @35999 has 2 MA's), (19, 36017), (24, 36053), (42, 36161), (45, 36173), (56, 36338), (57, 36344), (67, 36539), (70, 36560), (72, 36581), (73, 36590), (79, 36647), (81, 36689), (83, 36743), (84, 36788), (91, 36857), (93, 36893), (95, 36920), (97, 36947), (101, 37007), (104, 37040), (105, 37043), (109, 37073), (110, 37091), (117, 37232), (122, 37283), (135, 37493), (136, 37499), (140, 37538), (141, 37580), (143, 37592), (145, 37610), (164, 37784), (166, 37793), (167, 37796), (169, 37799), (171, 37811), (175, 37823), (176, 37826), (178, 37841), (195, 37928), (197, 37943), (212, 38087), (213, 38099), (233, 38279), (236, 38297), (245, 38378), (249, 38414), (251, 38435), (255, 38501),

Gene: Babyland\_90 Start: 34687, Stop: 37311, Start Num: 6

Candidate Starts for Babyland\_90:

(Start: 6 @34687 has 151 MA's), (13, 34756), (Start: 14 @34762 has 2 MA's), (19, 34780), (24, 34816), (42, 34924), (45, 34936), (56, 35101), (57, 35107), (67, 35302), (70, 35323), (72, 35344), (73, 35353), (79, 35410), (81, 35452), (83, 35506), (84, 35551), (91, 35620), (93, 35656), (95, 35683), (97, 35710), (101, 35770), (104, 35803), (105, 35806), (109, 35836), (110, 35854), (117, 35995), (122, 36046), (135, 36256), (136, 36262), (140, 36301), (141, 36343), (143, 36355), (145, 36373), (164, 36547), (166, 36556), (167, 36559), (169, 36562), (171, 36574), (175, 36586), (176, 36589), (178, 36604), (195, 36691), (197, 36706), (212, 36850), (213, 36862), (233, 37042), (236, 37060), (245, 37141), (249, 37177), (251, 37198), (255, 37264),

Gene: BackyardAgain\_87 Start: 34766, Stop: 37369, Start Num: 6

Candidate Starts for BackyardAgain\_87:

(Start: 6 @34766 has 151 MA's), (13, 34835), (Start: 14 @34841 has 2 MA's), (19, 34859), (24, 34895), (42, 35003), (45, 35015), (56, 35180), (57, 35186), (67, 35381), (70, 35402), (72, 35423), (73, 35432), (79, 35489), (81, 35531), (83, 35585), (84, 35630), (91, 35699), (93, 35735), (95, 35762), (97, 35789), (101, 35849), (104, 35882), (105, 35885), (108, 35906), (110, 35933), (113, 36005), (117, 36074), (122, 36125), (135, 36335), (136, 36341), (137, 36347), (140, 36380), (141, 36422), (143, 36434), (145, 36452), (164, 36626), (166, 36635), (167, 36638), (169, 36641), (171, 36653), (175, 36665), (176, 36668), (178, 36683), (195, 36749), (197, 36764), (212, 36908), (213, 36920), (233, 37100), (236, 37118), (245, 37199), (249, 37235), (251, 37256), (255, 37322),

Gene: BadAgartude\_87 Start: 36307, Stop: 38931, Start Num: 6

Candidate Starts for BadAgartude\_87:

(Start: 6 @36307 has 151 MA's), (13, 36376), (Start: 14 @36382 has 2 MA's), (19, 36400), (24, 36436), (42, 36544), (45, 36556), (56, 36721), (57, 36727), (67, 36922), (70, 36943), (72, 36964), (73, 36973), (79, 37030), (81, 37072), (83, 37126), (84, 37171), (91, 37240), (93, 37276), (95, 37303), (97, 37330), (101, 37390), (104, 37423), (105, 37426), (109, 37456), (110, 37474), (117, 37615), (122, 37666), (135, 37876), (136, 37882), (137, 37888), (140, 37921), (141, 37963), (143, 37975), (145, 37993), (164, 38167), (166, 38176), (167, 38179), (169, 38182), (171, 38194), (175, 38206), (176, 38209), (178, 38224), (195, 38311), (197, 38326), (212, 38470), (213, 38482), (233, 38662), (236, 38680), (245, 38761), (249, 38797), (251, 38818), (255, 38884),

Gene: BananaFence\_89 Start: 35789, Stop: 38413, Start Num: 6

Candidate Starts for BananaFence\_89:

(Start: 6 @35789 has 151 MA's), (13, 35858), (Start: 14 @35864 has 2 MA's), (19, 35882), (24, 35918), (42, 36026), (45, 36038), (56, 36203), (57, 36209), (67, 36404), (70, 36425), (72, 36446), (73, 36455), (79, 36512), (81, 36554), (83, 36608), (84, 36653), (91, 36722), (93, 36758), (95, 36785), (97, 36812), (101, 36872), (104, 36905), (105, 36908), (109, 36938), (110, 36956), (117, 37097), (122, 37148), (135, 37358), (136, 37364), (137, 37370), (140, 37403), (141, 37445), (143, 37457), (145, 37475), (164, 37649), (166, 37658), (167, 37661), (169, 37664), (171, 37676), (175, 37688), (176, 37691), (178, 37706), (195, 37793), (197, 37808), (212, 37952), (213, 37964), (233, 38144), (236, 38162), (245, 38243), (249, 38279), (251, 38300), (255, 38366),

Gene: Bangla1971\_91 Start: 35696, Stop: 38320, Start Num: 6

Candidate Starts for Bangla1971\_91:

(Start: 6 @35696 has 151 MA's), (13, 35765), (Start: 14 @35771 has 2 MA's), (19, 35789), (24, 35825), (42, 35933), (45, 35945), (56, 36110), (57, 36116), (67, 36311), (70, 36332), (72, 36353), (73, 36362), (79, 36419), (81, 36461), (83, 36515), (84, 36560), (91, 36629), (93, 36665), (95, 36692), (97, 36719), (101, 36779), (102, 36791), (104, 36812), (105, 36815), (109, 36845), (110, 36863), (117, 37004), (122, 37055), (135, 37265), (136, 37271), (140, 37310), (141, 37352), (143, 37364), (145, 37382), (164, 37556), (166, 37565), (167, 37568), (169, 37571), (171, 37583), (175, 37595), (176, 37598),



(178, 37613), (195, 37700), (197, 37715), (212, 37859), (213, 37871), (233, 38051), (236, 38069), (245, 38150), (249, 38186), (251, 38207), (255, 38273),

Gene: Basquiat\_86 Start: 34263, Stop: 36866, Start Num: 6

Candidate Starts for Basquiat\_86:

(Start: 6 @34263 has 151 MA's), (13, 34332), (Start: 14 @34338 has 2 MA's), (19, 34356), (24, 34392), (42, 34500), (45, 34512), (56, 34677), (57, 34683), (67, 34878), (70, 34899), (72, 34920), (73, 34929), (79, 34986), (81, 35028), (83, 35082), (84, 35127), (91, 35196), (93, 35232), (95, 35259), (97, 35286), (101, 35346), (104, 35379), (105, 35382), (108, 35403), (110, 35430), (113, 35502), (117, 35571), (122, 35622), (135, 35832), (136, 35838), (137, 35844), (140, 35877), (141, 35919), (143, 35931), (145, 35949), (164, 36123), (166, 36132), (167, 36135), (169, 36138), (171, 36150), (175, 36162), (176, 36165), (178, 36180), (195, 36246), (197, 36261), (212, 36405), (213, 36417), (233, 36597), (236, 36615), (245, 36696), (249, 36732), (251, 36753), (255, 36819),

Gene: Belieber\_84 Start: 34600, Stop: 37224, Start Num: 6

Candidate Starts for Belieber\_84:

(Start: 6 @34600 has 151 MA's), (13, 34669), (Start: 14 @34675 has 2 MA's), (19, 34693), (24, 34729), (42, 34837), (45, 34849), (56, 35014), (57, 35020), (67, 35215), (70, 35236), (72, 35257), (73, 35266), (79, 35323), (81, 35365), (83, 35419), (84, 35464), (91, 35533), (93, 35569), (95, 35596), (97, 35623), (101, 35683), (104, 35716), (105, 35719), (109, 35749), (110, 35767), (117, 35908), (122, 35959), (135, 36169), (136, 36175), (140, 36214), (141, 36256), (143, 36268), (145, 36286), (164, 36460), (166, 36469), (167, 36472), (169, 36475), (171, 36487), (175, 36499), (176, 36502), (178, 36517), (195, 36604), (197, 36619), (212, 36763), (213, 36775), (233, 36955), (236, 36973), (245, 37054), (249, 37090), (251, 37111), (255, 37177),

Gene: BigCity\_98 Start: 38300, Stop: 40924, Start Num: 6

Candidate Starts for BigCity\_98:

(Start: 6 @38300 has 151 MA's), (13, 38369), (Start: 14 @38375 has 2 MA's), (19, 38393), (24, 38429), (42, 38537), (45, 38549), (57, 38720), (67, 38915), (70, 38936), (72, 38957), (73, 38966), (79, 39023), (81, 39065), (83, 39119), (84, 39164), (91, 39233), (93, 39269), (95, 39296), (97, 39323), (101, 39383), (104, 39416), (105, 39419), (109, 39449), (110, 39467), (117, 39608), (122, 39659), (135, 39869), (136, 39875), (137, 39881), (140, 39914), (141, 39956), (143, 39968), (145, 39986), (164, 40160), (166, 40169), (167, 40172), (169, 40175), (171, 40187), (175, 40199), (176, 40202), (178, 40217), (195, 40304), (197, 40319), (212, 40463), (213, 40475), (233, 40655), (236, 40673), (245, 40754), (249, 40790), (251, 40811), (255, 40877),

Gene: Bigswole\_95 Start: 38669, Stop: 41272, Start Num: 6

Candidate Starts for Bigswole\_95:

(Start: 6 @38669 has 151 MA's), (13, 38738), (Start: 14 @38744 has 2 MA's), (19, 38762), (24, 38798), (42, 38906), (45, 38918), (56, 39083), (57, 39089), (67, 39284), (70, 39305), (72, 39326), (73, 39335), (79, 39392), (81, 39434), (83, 39488), (84, 39533), (91, 39602), (93, 39638), (95, 39665), (97, 39692), (101, 39752), (104, 39785), (105, 39788), (109, 39818), (110, 39836), (117, 39977), (122, 40028), (135, 40238), (136, 40244), (137, 40250), (140, 40283), (141, 40325), (143, 40337), (145, 40355), (164, 40529), (166, 40538), (167, 40541), (169, 40544), (171, 40556), (175, 40568), (176, 40571), (178, 40586), (195, 40652), (197, 40667), (212, 40811), (213, 40823), (233, 41003), (236, 41021), (245, 41102), (249, 41138), (251, 41159), (255, 41225),

Gene: Bipolarisk\_89 Start: 35954, Stop: 38578, Start Num: 6

Candidate Starts for Bipolarisk\_89:

(Start: 6 @35954 has 151 MA's), (13, 36023), (Start: 14 @36029 has 2 MA's), (19, 36047), (24, 36083), (42, 36191), (45, 36203), (56, 36368), (57, 36374), (67, 36569), (70, 36590), (72, 36611), (73, 36620), (79, 36677), (81, 36719), (83, 36773), (84, 36818), (91, 36887), (93, 36923), (95, 36950), (97, 36977), (101, 37037), (104, 37070), (105, 37073), (109, 37103), (110, 37121), (117, 37262), (122, 37313),

(135, 37523), (136, 37529), (140, 37568), (141, 37610), (143, 37622), (145, 37640), (164, 37814), (166, 37823), (167, 37826), (169, 37829), (171, 37841), (175, 37853), (176, 37856), (178, 37871), (195, 37958), (197, 37973), (212, 38117), (213, 38129), (233, 38309), (236, 38327), (245, 38408), (249, 38444), (251, 38465), (255, 38531),

Gene: Blackbrain\_85 Start: 34080, Stop: 36683, Start Num: 6

Candidate Starts for Blackbrain\_85:

(Start: 6 @34080 has 151 MA's), (13, 34149), (Start: 14 @34155 has 2 MA's), (19, 34173), (24, 34209), (42, 34317), (45, 34329), (56, 34494), (57, 34500), (67, 34695), (70, 34716), (72, 34737), (73, 34746), (79, 34803), (81, 34845), (83, 34899), (84, 34944), (91, 35013), (93, 35049), (95, 35076), (97, 35103), (101, 35163), (104, 35196), (105, 35199), (108, 35220), (110, 35247), (113, 35319), (117, 35388), (122, 35439), (135, 35649), (136, 35655), (137, 35661), (140, 35694), (141, 35736), (143, 35748), (145, 35766), (164, 35940), (166, 35949), (167, 35952), (169, 35955), (171, 35967), (175, 35979), (176, 35982), (178, 35997), (195, 36063), (197, 36078), (212, 36222), (213, 36234), (233, 36414), (236, 36432), (245, 36513), (249, 36549), (251, 36570), (255, 36636),

Gene: Blackdragon\_84 Start: 34772, Stop: 37396, Start Num: 6

Candidate Starts for Blackdragon\_84:

(Start: 6 @34772 has 151 MA's), (13, 34841), (Start: 14 @34847 has 2 MA's), (19, 34865), (24, 34901), (42, 35009), (45, 35021), (56, 35186), (57, 35192), (67, 35387), (70, 35408), (72, 35429), (73, 35438), (79, 35495), (81, 35537), (83, 35591), (84, 35636), (91, 35705), (93, 35741), (95, 35768), (97, 35795), (101, 35855), (104, 35888), (105, 35891), (109, 35921), (110, 35939), (117, 36080), (122, 36131), (135, 36341), (136, 36347), (140, 36386), (141, 36428), (143, 36440), (145, 36458), (164, 36632), (166, 36641), (167, 36644), (169, 36647), (171, 36659), (175, 36671), (176, 36674), (178, 36689), (195, 36776), (197, 36791), (212, 36935), (213, 36947), (233, 37127), (236, 37145), (245, 37226), (249, 37262), (251, 37283), (255, 37349),

Gene: Bonray\_90 Start: 36351, Stop: 38975, Start Num: 6

Candidate Starts for Bonray\_90:

(Start: 6 @36351 has 151 MA's), (13, 36420), (Start: 14 @36426 has 2 MA's), (19, 36444), (24, 36480), (42, 36588), (45, 36600), (56, 36765), (57, 36771), (67, 36966), (70, 36987), (72, 37008), (73, 37017), (79, 37074), (81, 37116), (83, 37170), (84, 37215), (91, 37284), (93, 37320), (95, 37347), (97, 37374), (101, 37434), (104, 37467), (105, 37470), (109, 37500), (110, 37518), (117, 37659), (122, 37710), (135, 37920), (136, 37926), (140, 37965), (141, 38007), (143, 38019), (145, 38037), (164, 38211), (166, 38220), (167, 38223), (169, 38226), (171, 38238), (175, 38250), (176, 38253), (178, 38268), (195, 38355), (197, 38370), (212, 38514), (213, 38526), (233, 38706), (236, 38724), (245, 38805), (249, 38841), (251, 38862), (255, 38928),

Gene: Bread\_90 Start: 35846, Stop: 38470, Start Num: 6

Candidate Starts for Bread\_90:

(Start: 6 @35846 has 151 MA's), (13, 35915), (Start: 14 @35921 has 2 MA's), (19, 35939), (24, 35975), (42, 36083), (45, 36095), (56, 36260), (57, 36266), (67, 36461), (70, 36482), (72, 36503), (73, 36512), (79, 36569), (81, 36611), (83, 36665), (84, 36710), (91, 36779), (93, 36815), (95, 36842), (97, 36869), (101, 36929), (104, 36962), (105, 36965), (108, 36986), (110, 37013), (113, 37085), (117, 37154), (122, 37205), (135, 37415), (136, 37421), (140, 37460), (141, 37502), (143, 37514), (145, 37532), (164, 37706), (166, 37715), (167, 37718), (169, 37721), (171, 37733), (175, 37745), (176, 37748), (178, 37763), (195, 37850), (197, 37865), (212, 38009), (213, 38021), (233, 38201), (236, 38219), (245, 38300), (249, 38336), (251, 38357), (255, 38423),

Gene: Breeniome\_90 Start: 35069, Stop: 37693, Start Num: 6

Candidate Starts for Breeniome\_90:

(Start: 6 @35069 has 151 MA's), (13, 35138), (Start: 14 @35144 has 2 MA's), (19, 35162), (24, 35198), (42, 35306), (45, 35318), (56, 35483), (57, 35489), (67, 35684), (70, 35705), (72, 35726), (73, 35735),

(79, 35792), (81, 35834), (83, 35888), (84, 35933), (91, 36002), (93, 36038), (95, 36065), (97, 36092), (101, 36152), (104, 36185), (105, 36188), (109, 36218), (110, 36236), (117, 36377), (122, 36428), (135, 36638), (136, 36644), (140, 36683), (141, 36725), (143, 36737), (145, 36755), (164, 36929), (166, 36938), (167, 36941), (169, 36944), (171, 36956), (175, 36968), (176, 36971), (178, 36986), (195, 37073), (197, 37088), (212, 37232), (213, 37244), (233, 37424), (236, 37442), (245, 37523), (249, 37559), (251, 37580), (255, 37646),

Gene: Burrough\_90 Start: 36503, Stop: 39127, Start Num: 6

Candidate Starts for Burrough\_90:

(Start: 6 @36503 has 151 MA's), (13, 36572), (Start: 14 @36578 has 2 MA's), (19, 36596), (24, 36632), (42, 36740), (45, 36752), (56, 36917), (57, 36923), (67, 37118), (70, 37139), (72, 37160), (73, 37169), (79, 37226), (81, 37268), (83, 37322), (84, 37367), (91, 37436), (93, 37472), (95, 37499), (97, 37526), (101, 37586), (104, 37619), (105, 37622), (109, 37652), (110, 37670), (117, 37811), (122, 37862), (135, 38072), (136, 38078), (140, 38117), (141, 38159), (143, 38171), (145, 38189), (164, 38363), (166, 38372), (167, 38375), (169, 38378), (171, 38390), (175, 38402), (176, 38405), (178, 38420), (195, 38507), (197, 38522), (212, 38666), (213, 38678), (233, 38858), (236, 38876), (245, 38957), (249, 38993), (251, 39014), (255, 39080),

Gene: Bxz1\_89 Start: 37554, Stop: 40178, Start Num: 6

Candidate Starts for Bxz1\_89:

(Start: 6 @37554 has 151 MA's), (13, 37623), (Start: 14 @37629 has 2 MA's), (19, 37647), (24, 37683), (42, 37791), (45, 37803), (56, 37968), (57, 37974), (67, 38169), (70, 38190), (72, 38211), (73, 38220), (79, 38277), (81, 38319), (83, 38373), (84, 38418), (91, 38487), (93, 38523), (95, 38550), (97, 38577), (101, 38637), (104, 38670), (105, 38673), (109, 38703), (110, 38721), (117, 38862), (122, 38913), (135, 39123), (136, 39129), (140, 39168), (141, 39210), (143, 39222), (145, 39240), (164, 39414), (166, 39423), (167, 39426), (169, 39429), (171, 39441), (175, 39453), (176, 39456), (178, 39471), (195, 39558), (197, 39573), (212, 39717), (213, 39729), (233, 39909), (236, 39927), (245, 40008), (249, 40044), (251, 40065), (255, 40131),

Gene: Cactojaque\_85 Start: 34187, Stop: 36790, Start Num: 6

Candidate Starts for Cactojaque\_85:

(Start: 6 @34187 has 151 MA's), (13, 34256), (Start: 14 @34262 has 2 MA's), (19, 34280), (24, 34316), (42, 34424), (45, 34436), (56, 34601), (57, 34607), (67, 34802), (70, 34823), (72, 34844), (73, 34853), (79, 34910), (81, 34952), (83, 35006), (84, 35051), (91, 35120), (93, 35156), (95, 35183), (97, 35210), (101, 35270), (104, 35303), (105, 35306), (108, 35327), (110, 35354), (113, 35426), (117, 35495), (122, 35546), (135, 35756), (136, 35762), (137, 35768), (140, 35801), (141, 35843), (143, 35855), (145, 35873), (164, 36047), (166, 36056), (167, 36059), (169, 36062), (171, 36074), (175, 36086), (176, 36089), (178, 36104), (195, 36170), (197, 36185), (212, 36329), (213, 36341), (233, 36521), (236, 36539), (245, 36620), (249, 36656), (251, 36677), (255, 36743),

Gene: Cali\_85 Start: 36080, Stop: 38704, Start Num: 6

Candidate Starts for Cali\_85:

(Start: 6 @36080 has 151 MA's), (13, 36149), (Start: 14 @36155 has 2 MA's), (19, 36173), (24, 36209), (42, 36317), (45, 36329), (56, 36494), (57, 36500), (67, 36695), (70, 36716), (72, 36737), (73, 36746), (79, 36803), (81, 36845), (83, 36899), (84, 36944), (91, 37013), (93, 37049), (95, 37076), (97, 37103), (101, 37163), (104, 37196), (105, 37199), (109, 37229), (110, 37247), (117, 37388), (122, 37439), (135, 37649), (136, 37655), (140, 37694), (141, 37736), (143, 37748), (145, 37766), (164, 37940), (166, 37949), (167, 37952), (169, 37955), (171, 37967), (175, 37979), (176, 37982), (178, 37997), (195, 38084), (197, 38099), (212, 38243), (213, 38255), (233, 38435), (236, 38453), (245, 38534), (249, 38570), (251, 38591), (255, 38657),

Gene: Capablanca\_92 Start: 36373, Stop: 38997, Start Num: 6

Candidate Starts for Capablanca\_92:

(Start: 6 @36373 has 151 MA's), (13, 36442), (Start: 14 @36448 has 2 MA's), (19, 36466), (24, 36502), (42, 36610), (45, 36622), (56, 36787), (57, 36793), (67, 36988), (70, 37009), (72, 37030), (73, 37039), (79, 37096), (81, 37138), (83, 37192), (84, 37237), (91, 37306), (93, 37342), (95, 37369), (97, 37396), (101, 37456), (104, 37489), (105, 37492), (108, 37513), (110, 37540), (113, 37612), (117, 37681), (122, 37732), (135, 37942), (136, 37948), (140, 37987), (141, 38029), (143, 38041), (145, 38059), (164, 38233), (166, 38242), (167, 38245), (169, 38248), (171, 38260), (175, 38272), (176, 38275), (178, 38290), (195, 38377), (197, 38392), (212, 38536), (213, 38548), (233, 38728), (236, 38746), (245, 38827), (249, 38863), (251, 38884), (255, 38950),

Gene: Caravan\_85 Start: 35898, Stop: 38501, Start Num: 6

Candidate Starts for Caravan\_85:

(Start: 6 @35898 has 151 MA's), (13, 35967), (Start: 14 @35973 has 2 MA's), (19, 35991), (24, 36027), (42, 36135), (45, 36147), (56, 36312), (57, 36318), (67, 36513), (70, 36534), (72, 36555), (73, 36564), (79, 36621), (81, 36663), (83, 36717), (84, 36762), (91, 36831), (93, 36867), (95, 36894), (97, 36921), (101, 36981), (104, 37014), (105, 37017), (109, 37047), (110, 37065), (117, 37206), (122, 37257), (135, 37467), (136, 37473), (140, 37512), (141, 37554), (143, 37566), (145, 37584), (164, 37758), (166, 37767), (167, 37770), (169, 37773), (171, 37785), (175, 37797), (176, 37800), (178, 37815), (195, 37881), (197, 37896), (212, 38040), (213, 38052), (233, 38232), (236, 38250), (245, 38331), (249, 38367), (251, 38388), (255, 38454),

Gene: Catera\_88 Start: 34352, Stop: 36955, Start Num: 6

Candidate Starts for Catera\_88:

(Start: 6 @34352 has 151 MA's), (13, 34421), (Start: 14 @34427 has 2 MA's), (19, 34445), (24, 34481), (42, 34589), (45, 34601), (56, 34766), (57, 34772), (67, 34967), (70, 34988), (72, 35009), (73, 35018), (79, 35075), (81, 35117), (83, 35171), (84, 35216), (91, 35285), (93, 35321), (95, 35348), (97, 35375), (101, 35435), (104, 35468), (105, 35471), (108, 35492), (110, 35519), (113, 35591), (117, 35660), (122, 35711), (135, 35921), (136, 35927), (137, 35933), (140, 35966), (141, 36008), (143, 36020), (145, 36038), (164, 36212), (166, 36221), (167, 36224), (169, 36227), (171, 36239), (175, 36251), (176, 36254), (178, 36269), (195, 36335), (197, 36350), (212, 36494), (213, 36506), (233, 36686), (236, 36704), (245, 36785), (249, 36821), (251, 36842), (255, 36908),

Gene: Chargie21\_86 Start: 34263, Stop: 36866, Start Num: 6

Candidate Starts for Chargie21\_86:

(Start: 6 @34263 has 151 MA's), (13, 34332), (Start: 14 @34338 has 2 MA's), (19, 34356), (24, 34392), (42, 34500), (45, 34512), (56, 34677), (57, 34683), (67, 34878), (70, 34899), (72, 34920), (73, 34929), (79, 34986), (81, 35028), (83, 35082), (84, 35127), (91, 35196), (93, 35232), (95, 35259), (97, 35286), (101, 35346), (104, 35379), (105, 35382), (108, 35403), (110, 35430), (113, 35502), (117, 35571), (122, 35622), (135, 35832), (136, 35838), (137, 35844), (140, 35877), (141, 35919), (143, 35931), (145, 35949), (164, 36123), (166, 36132), (167, 36135), (169, 36138), (171, 36150), (175, 36162), (176, 36165), (178, 36180), (195, 36246), (197, 36261), (212, 36405), (213, 36417), (233, 36597), (236, 36615), (245, 36696), (249, 36732), (251, 36753), (255, 36819),

Gene: CharlieB\_85 Start: 34078, Stop: 36702, Start Num: 6

Candidate Starts for CharlieB\_85:

(Start: 6 @34078 has 151 MA's), (13, 34147), (Start: 14 @34153 has 2 MA's), (19, 34171), (24, 34207), (42, 34315), (45, 34327), (56, 34492), (57, 34498), (67, 34693), (70, 34714), (72, 34735), (73, 34744), (79, 34801), (81, 34843), (83, 34897), (84, 34942), (91, 35011), (93, 35047), (95, 35074), (97, 35101), (101, 35161), (104, 35194), (105, 35197), (109, 35227), (110, 35245), (117, 35386), (122, 35437), (135, 35647), (136, 35653), (140, 35692), (141, 35734), (143, 35746), (145, 35764), (164, 35938), (166, 35947), (167, 35950), (169, 35953), (171, 35965), (175, 35977), (176, 35980), (178, 35995), (195, 36082), (197, 36097), (212, 36241), (213, 36253), (233, 36433), (236, 36451), (245, 36532), (249, 36568), (251, 36589), (255, 36655),

Gene: ChaylaJr\_85 Start: 33978, Stop: 36581, Start Num: 6

Candidate Starts for ChaylaJr\_85:

(Start: 6 @33978 has 151 MA's), (13, 34047), (Start: 14 @34053 has 2 MA's), (19, 34071), (24, 34107), (42, 34215), (45, 34227), (56, 34392), (57, 34398), (67, 34593), (70, 34614), (72, 34635), (73, 34644), (79, 34701), (81, 34743), (83, 34797), (84, 34842), (91, 34911), (93, 34947), (95, 34974), (97, 35001), (101, 35061), (104, 35094), (105, 35097), (108, 35118), (110, 35145), (113, 35217), (117, 35286), (122, 35337), (135, 35547), (136, 35553), (137, 35559), (140, 35592), (141, 35634), (143, 35646), (145, 35664), (164, 35838), (166, 35847), (167, 35850), (169, 35853), (171, 35865), (175, 35877), (176, 35880), (178, 35895), (195, 35961), (197, 35976), (212, 36120), (213, 36132), (233, 36312), (236, 36330), (245, 36411), (249, 36447), (251, 36468), (255, 36534),

Gene: CherryTomatoes\_88 Start: 36603, Stop: 39215, Start Num: 6

Candidate Starts for CherryTomatoes\_88:

(Start: 6 @36603 has 151 MA's), (Start: 9 @36621 has 1 MA's), (21, 36720), (27, 36759), (42, 36822), (45, 36834), (48, 36864), (59, 37053), (61, 37080), (67, 37200), (69, 37209), (70, 37221), (71, 37227), (72, 37242), (73, 37251), (74, 37263), (76, 37275), (82, 37389), (84, 37449), (87, 37476), (90, 37515), (91, 37518), (93, 37554), (94, 37578), (101, 37668), (110, 37752), (112, 37797), (115, 37881), (116, 37890), (117, 37893), (122, 37944), (123, 37947), (135, 38154), (136, 38160), (141, 38241), (142, 38250), (143, 38253), (145, 38271), (148, 38289), (152, 38340), (155, 38382), (160, 38424), (163, 38439), (167, 38448), (174, 38466), (175, 38469), (177, 38481), (182, 38493), (184, 38508), (185, 38511), (191, 38541), (202, 38637), (210, 38715), (216, 38760), (219, 38799), (230, 38901), (237, 38976), (240, 39000), (241, 39003), (249, 39075), (255, 39168), (256, 39177), (257, 39189),

Gene: ChickenPhender\_86 Start: 34311, Stop: 36914, Start Num: 6

Candidate Starts for ChickenPhender\_86:

(Start: 6 @34311 has 151 MA's), (13, 34380), (Start: 14 @34386 has 2 MA's), (19, 34404), (24, 34440), (42, 34548), (45, 34560), (56, 34725), (57, 34731), (67, 34926), (70, 34947), (72, 34968), (73, 34977), (79, 35034), (81, 35076), (83, 35130), (84, 35175), (91, 35244), (93, 35280), (95, 35307), (97, 35334), (101, 35394), (104, 35427), (105, 35430), (108, 35451), (110, 35478), (113, 35550), (117, 35619), (122, 35670), (135, 35880), (136, 35886), (137, 35892), (140, 35925), (141, 35967), (143, 35979), (145, 35997), (164, 36171), (166, 36180), (167, 36183), (169, 36186), (171, 36198), (175, 36210), (176, 36213), (178, 36228), (195, 36294), (197, 36309), (212, 36453), (213, 36465), (233, 36645), (236, 36663), (245, 36744), (249, 36780), (251, 36801), (255, 36867),

Gene: Concombre\_97 Start: 38489, Stop: 41113, Start Num: 6

Candidate Starts for Concombre\_97:

(Start: 6 @38489 has 151 MA's), (13, 38558), (Start: 14 @38564 has 2 MA's), (19, 38582), (24, 38618), (42, 38726), (45, 38738), (56, 38903), (57, 38909), (67, 39104), (70, 39125), (72, 39146), (73, 39155), (79, 39212), (81, 39254), (83, 39308), (84, 39353), (91, 39422), (93, 39458), (95, 39485), (97, 39512), (101, 39572), (104, 39605), (105, 39608), (109, 39638), (110, 39656), (117, 39797), (122, 39848), (135, 40058), (136, 40064), (140, 40103), (141, 40145), (143, 40157), (145, 40175), (164, 40349), (166, 40358), (167, 40361), (169, 40364), (171, 40376), (175, 40388), (176, 40391), (178, 40406), (195, 40493), (197, 40508), (212, 40652), (213, 40664), (233, 40844), (236, 40862), (245, 40943), (249, 40979), (251, 41000), (255, 41066),

Gene: DTDevon\_91 Start: 36409, Stop: 39033, Start Num: 6

Candidate Starts for DTDevon\_91:

(Start: 6 @36409 has 151 MA's), (13, 36478), (Start: 14 @36484 has 2 MA's), (19, 36502), (24, 36538), (42, 36646), (45, 36658), (56, 36823), (57, 36829), (67, 37024), (70, 37045), (72, 37066), (73, 37075), (79, 37132), (81, 37174), (83, 37228), (84, 37273), (91, 37342), (93, 37378), (95, 37405), (97, 37432), (101, 37492), (104, 37525), (105, 37528), (109, 37558), (110, 37576), (117, 37717), (122, 37768), (135, 37978), (136, 37984), (140, 38023), (141, 38065), (143, 38077), (145, 38095), (164, 38269), (166, 38278), (167, 38281), (169, 38284), (171, 38296), (175, 38308), (176, 38311), (178, 38326),

(195, 38413), (197, 38428), (212, 38572), (213, 38584), (233, 38764), (236, 38782), (245, 38863), (249, 38899), (251, 38920), (255, 38986),

Gene: Daffodil\_95 Start: 36242, Stop: 38866, Start Num: 6

Candidate Starts for Daffodil\_95:

(Start: 6 @36242 has 151 MA's), (13, 36311), (Start: 14 @36317 has 2 MA's), (19, 36335), (24, 36371), (42, 36479), (45, 36491), (56, 36656), (57, 36662), (67, 36857), (70, 36878), (72, 36899), (73, 36908), (79, 36965), (81, 37007), (83, 37061), (84, 37106), (91, 37175), (93, 37211), (95, 37238), (97, 37265), (101, 37325), (104, 37358), (105, 37361), (109, 37391), (110, 37409), (117, 37550), (122, 37601), (135, 37811), (136, 37817), (140, 37856), (141, 37898), (143, 37910), (145, 37928), (164, 38102), (166, 38111), (167, 38114), (169, 38117), (171, 38129), (175, 38141), (176, 38144), (178, 38159), (195, 38246), (197, 38261), (212, 38405), (213, 38417), (233, 38597), (236, 38615), (245, 38696), (249, 38732), (251, 38753), (255, 38819),

Gene: Dandelion\_97 Start: 38939, Stop: 41563, Start Num: 6

Candidate Starts for Dandelion\_97:

(Start: 6 @38939 has 151 MA's), (13, 39008), (Start: 14 @39014 has 2 MA's), (19, 39032), (24, 39068), (42, 39176), (45, 39188), (56, 39353), (57, 39359), (67, 39554), (70, 39575), (72, 39596), (73, 39605), (79, 39662), (81, 39704), (83, 39758), (84, 39803), (91, 39872), (93, 39908), (95, 39935), (97, 39962), (101, 40022), (104, 40055), (105, 40058), (109, 40088), (110, 40106), (117, 40247), (122, 40298), (135, 40508), (136, 40514), (140, 40553), (141, 40595), (143, 40607), (145, 40625), (164, 40799), (166, 40808), (167, 40811), (169, 40814), (171, 40826), (175, 40838), (176, 40841), (178, 40856), (195, 40943), (197, 40958), (212, 41102), (213, 41114), (233, 41294), (236, 41312), (245, 41393), (249, 41429), (251, 41450), (255, 41516),

Gene: Darko\_90 Start: 36177, Stop: 38801, Start Num: 6

Candidate Starts for Darko\_90:

(Start: 6 @36177 has 151 MA's), (13, 36246), (Start: 14 @36252 has 2 MA's), (19, 36270), (24, 36306), (42, 36414), (45, 36426), (56, 36591), (57, 36597), (67, 36792), (70, 36813), (72, 36834), (73, 36843), (79, 36900), (81, 36942), (83, 36996), (84, 37041), (91, 37110), (93, 37146), (95, 37173), (97, 37200), (101, 37260), (104, 37293), (105, 37296), (109, 37326), (110, 37344), (117, 37485), (122, 37536), (135, 37746), (136, 37752), (137, 37758), (140, 37791), (141, 37833), (143, 37845), (145, 37863), (164, 38037), (166, 38046), (167, 38049), (169, 38052), (171, 38064), (175, 38076), (176, 38079), (178, 38094), (195, 38181), (197, 38196), (212, 38340), (213, 38352), (233, 38532), (236, 38550), (245, 38631), (249, 38667), (251, 38688), (255, 38754),

Gene: DeejaClivia\_79 Start: 32115, Stop: 34718, Start Num: 6

Candidate Starts for DeejaClivia\_79:

(Start: 6 @32115 has 151 MA's), (13, 32184), (Start: 14 @32190 has 2 MA's), (19, 32208), (24, 32244), (42, 32352), (45, 32364), (56, 32529), (57, 32535), (67, 32730), (70, 32751), (72, 32772), (73, 32781), (79, 32838), (81, 32880), (83, 32934), (84, 32979), (91, 33048), (93, 33084), (95, 33111), (97, 33138), (101, 33198), (104, 33231), (105, 33234), (108, 33255), (110, 33282), (113, 33354), (117, 33423), (122, 33474), (135, 33684), (136, 33690), (137, 33696), (140, 33729), (141, 33771), (143, 33783), (145, 33801), (164, 33975), (166, 33984), (167, 33987), (169, 33990), (171, 34002), (175, 34014), (176, 34017), (178, 34032), (195, 34098), (197, 34113), (212, 34257), (213, 34269), (233, 34449), (236, 34467), (245, 34548), (249, 34584), (251, 34605), (255, 34671),

Gene: Delilah\_90 Start: 36243, Stop: 38867, Start Num: 6

Candidate Starts for Delilah\_90:

(Start: 6 @36243 has 151 MA's), (13, 36312), (Start: 14 @36318 has 2 MA's), (19, 36336), (24, 36372), (42, 36480), (45, 36492), (56, 36657), (57, 36663), (67, 36858), (70, 36879), (72, 36900), (73, 36909), (79, 36966), (81, 37008), (83, 37062), (84, 37107), (91, 37176), (93, 37212), (95, 37239), (97, 37266), (101, 37326), (104, 37359), (105, 37362), (109, 37392), (110, 37410), (117, 37551), (122, 37602),

(135, 37812), (136, 37818), (140, 37857), (141, 37899), (143, 37911), (145, 37929), (164, 38103), (166, 38112), (167, 38115), (169, 38118), (171, 38130), (175, 38142), (176, 38145), (178, 38160), (195, 38247), (197, 38262), (212, 38406), (213, 38418), (233, 38598), (236, 38616), (245, 38697), (249, 38733), (251, 38754), (255, 38820),

Gene: Delylah\_93 Start: 36036, Stop: 38660, Start Num: 6

Candidate Starts for Delylah\_93:

(Start: 6 @36036 has 151 MA's), (13, 36105), (Start: 14 @36111 has 2 MA's), (19, 36129), (24, 36165), (42, 36273), (45, 36285), (56, 36450), (57, 36456), (67, 36651), (70, 36672), (72, 36693), (73, 36702), (79, 36759), (81, 36801), (83, 36855), (84, 36900), (91, 36969), (93, 37005), (95, 37032), (97, 37059), (101, 37119), (104, 37152), (105, 37155), (109, 37185), (110, 37203), (117, 37344), (122, 37395), (135, 37605), (136, 37611), (140, 37650), (141, 37692), (143, 37704), (145, 37722), (164, 37896), (166, 37905), (167, 37908), (169, 37911), (171, 37923), (175, 37935), (176, 37938), (178, 37953), (195, 38040), (197, 38055), (212, 38199), (213, 38211), (233, 38391), (236, 38409), (245, 38490), (249, 38526), (251, 38547), (255, 38613),

Gene: Demodog\_97 Start: 38489, Stop: 41113, Start Num: 6

Candidate Starts for Demodog\_97:

(Start: 6 @38489 has 151 MA's), (13, 38558), (Start: 14 @38564 has 2 MA's), (19, 38582), (24, 38618), (42, 38726), (45, 38738), (56, 38903), (57, 38909), (67, 39104), (70, 39125), (72, 39146), (73, 39155), (79, 39212), (81, 39254), (83, 39308), (84, 39353), (91, 39422), (93, 39458), (95, 39485), (97, 39512), (101, 39572), (104, 39605), (105, 39608), (109, 39638), (110, 39656), (117, 39797), (122, 39848), (135, 40058), (136, 40064), (140, 40103), (141, 40145), (143, 40157), (145, 40175), (164, 40349), (166, 40358), (167, 40361), (169, 40364), (171, 40376), (175, 40388), (176, 40391), (178, 40406), (195, 40493), (197, 40508), (212, 40652), (213, 40664), (233, 40844), (236, 40862), (245, 40943), (249, 40979), (251, 41000), (255, 41066),

Gene: Dietrick\_82 Start: 34014, Stop: 36617, Start Num: 6

Candidate Starts for Dietrick\_82:

(Start: 6 @34014 has 151 MA's), (13, 34083), (Start: 14 @34089 has 2 MA's), (19, 34107), (24, 34143), (42, 34251), (45, 34263), (56, 34428), (57, 34434), (67, 34629), (70, 34650), (72, 34671), (73, 34680), (79, 34737), (81, 34779), (83, 34833), (84, 34878), (91, 34947), (93, 34983), (95, 35010), (97, 35037), (101, 35097), (104, 35130), (105, 35133), (108, 35154), (110, 35181), (113, 35253), (117, 35322), (122, 35373), (135, 35583), (136, 35589), (137, 35595), (140, 35628), (141, 35670), (143, 35682), (145, 35700), (164, 35874), (166, 35883), (167, 35886), (169, 35889), (171, 35901), (175, 35913), (176, 35916), (178, 35931), (195, 35997), (197, 36012), (212, 36156), (213, 36168), (233, 36348), (236, 36366), (245, 36447), (249, 36483), (251, 36504), (255, 36570),

Gene: DirtMonster\_83 Start: 34835, Stop: 37459, Start Num: 6

Candidate Starts for DirtMonster\_83:

(Start: 6 @34835 has 151 MA's), (13, 34904), (Start: 14 @34910 has 2 MA's), (19, 34928), (24, 34964), (42, 35072), (45, 35084), (56, 35249), (57, 35255), (67, 35450), (70, 35471), (72, 35492), (73, 35501), (79, 35558), (81, 35600), (83, 35654), (84, 35699), (91, 35768), (93, 35804), (95, 35831), (97, 35858), (101, 35918), (104, 35951), (105, 35954), (109, 35984), (110, 36002), (117, 36143), (122, 36194), (135, 36404), (136, 36410), (137, 36416), (140, 36449), (141, 36491), (143, 36503), (145, 36521), (164, 36695), (166, 36704), (167, 36707), (169, 36710), (171, 36722), (175, 36734), (176, 36737), (178, 36752), (195, 36839), (197, 36854), (212, 36998), (213, 37010), (233, 37190), (236, 37208), (245, 37289), (249, 37325), (251, 37346), (255, 37412),

Gene: Domi\_84 Start: 35571, Stop: 38195, Start Num: 6

Candidate Starts for Domi\_84:

(Start: 6 @35571 has 151 MA's), (13, 35640), (Start: 14 @35646 has 2 MA's), (19, 35664), (24, 35700), (42, 35808), (45, 35820), (56, 35985), (57, 35991), (67, 36186), (70, 36207), (72, 36228), (73, 36237),

(79, 36294), (81, 36336), (83, 36390), (84, 36435), (91, 36504), (93, 36540), (95, 36567), (97, 36594), (101, 36654), (104, 36687), (105, 36690), (109, 36720), (110, 36738), (117, 36879), (122, 36930), (135, 37140), (136, 37146), (137, 37152), (140, 37185), (141, 37227), (143, 37239), (145, 37257), (164, 37431), (166, 37440), (167, 37443), (169, 37446), (171, 37458), (175, 37470), (176, 37473), (178, 37488), (195, 37575), (197, 37590), (212, 37734), (213, 37746), (233, 37926), (236, 37944), (245, 38025), (249, 38061), (251, 38082), (255, 38148),

Gene: DrPhinkDaddy\_89 Start: 36298, Stop: 38922, Start Num: 6

Candidate Starts for DrPhinkDaddy\_89:

(Start: 6 @36298 has 151 MA's), (13, 36367), (Start: 14 @36373 has 2 MA's), (19, 36391), (24, 36427), (42, 36535), (45, 36547), (56, 36712), (57, 36718), (67, 36913), (70, 36934), (72, 36955), (73, 36964), (79, 37021), (81, 37063), (83, 37117), (84, 37162), (91, 37231), (93, 37267), (95, 37294), (97, 37321), (101, 37381), (104, 37414), (105, 37417), (109, 37447), (110, 37465), (117, 37606), (122, 37657), (135, 37867), (136, 37873), (140, 37912), (141, 37954), (143, 37966), (145, 37984), (164, 38158), (166, 38167), (167, 38170), (169, 38173), (171, 38185), (175, 38197), (176, 38200), (178, 38215), (195, 38302), (197, 38317), (212, 38461), (213, 38473), (233, 38653), (236, 38671), (245, 38752), (249, 38788), (251, 38809), (255, 38875),

Gene: Drazdys\_90 Start: 36040, Stop: 38664, Start Num: 6

Candidate Starts for Drazdys\_90:

(Start: 6 @36040 has 151 MA's), (13, 36109), (Start: 14 @36115 has 2 MA's), (19, 36133), (24, 36169), (42, 36277), (45, 36289), (56, 36454), (57, 36460), (67, 36655), (70, 36676), (72, 36697), (73, 36706), (79, 36763), (81, 36805), (83, 36859), (84, 36904), (91, 36973), (93, 37009), (95, 37036), (97, 37063), (101, 37123), (102, 37135), (104, 37156), (105, 37159), (109, 37189), (110, 37207), (117, 37348), (122, 37399), (135, 37609), (136, 37615), (140, 37654), (141, 37696), (143, 37708), (145, 37726), (164, 37900), (166, 37909), (167, 37912), (169, 37915), (171, 37927), (175, 37939), (176, 37942), (178, 37957), (195, 38044), (197, 38059), (212, 38203), (213, 38215), (233, 38395), (236, 38413), (245, 38494), (249, 38530), (251, 38551), (255, 38617),

Gene: E3\_gp72 Start: 32680, Stop: 35169, Start Num: 10

Candidate Starts for E3\_gp72:

(5, 32617), (7, 32665), (Start: 10 @32680 has 3 MA's), (11, 32698), (15, 32737), (20, 32776), (35, 32887), (41, 32908), (50, 33019), (56, 33106), (57, 33112), (58, 33121), (59, 33163), (60, 33169), (69, 33313), (70, 33325), (72, 33346), (74, 33367), (85, 33532), (86, 33541), (88, 33574), (89, 33577), (91, 33598), (92, 33601), (101, 33748), (104, 33781), (105, 33784), (108, 33805), (109, 33814), (110, 33832), (112, 33877), (116, 33970), (117, 33973), (119, 33994), (130, 34141), (131, 34156), (145, 34351), (150, 34405), (155, 34462), (159, 34489), (161, 34495), (166, 34516), (175, 34537), (176, 34540), (179, 34558), (183, 34567), (187, 34573), (189, 34579), (200, 34678), (203, 34684), (204, 34705), (207, 34723), (214, 34768), (215, 34777), (218, 34813), (227, 34882), (229, 34894), (234, 34948), (235, 34954), (246, 35014), (257, 35143),

Gene: EasyJones\_93 Start: 35370, Stop: 37973, Start Num: 6

Candidate Starts for EasyJones\_93:

(Start: 6 @35370 has 151 MA's), (13, 35439), (Start: 14 @35445 has 2 MA's), (19, 35463), (24, 35499), (42, 35607), (45, 35619), (56, 35784), (57, 35790), (67, 35985), (70, 36006), (72, 36027), (73, 36036), (79, 36093), (81, 36135), (83, 36189), (84, 36234), (91, 36303), (93, 36339), (95, 36366), (97, 36393), (101, 36453), (104, 36486), (105, 36489), (108, 36510), (110, 36537), (113, 36609), (117, 36678), (122, 36729), (135, 36939), (136, 36945), (137, 36951), (140, 36984), (141, 37026), (143, 37038), (145, 37056), (164, 37230), (166, 37239), (167, 37242), (169, 37245), (171, 37257), (175, 37269), (176, 37272), (178, 37287), (195, 37353), (197, 37368), (212, 37512), (213, 37524), (233, 37704), (236, 37722), (245, 37803), (249, 37839), (251, 37860), (255, 37926),

Gene: EggyFarm\_98 Start: 38300, Stop: 40924, Start Num: 6



Candidate Starts for EggyFarm\_98:

(Start: 6 @38300 has 151 MA's), (13, 38369), (Start: 14 @38375 has 2 MA's), (19, 38393), (24, 38429), (42, 38537), (45, 38549), (57, 38720), (67, 38915), (70, 38936), (72, 38957), (73, 38966), (79, 39023), (81, 39065), (83, 39119), (84, 39164), (91, 39233), (93, 39269), (95, 39296), (97, 39323), (101, 39383), (104, 39416), (105, 39419), (109, 39449), (110, 39467), (117, 39608), (122, 39659), (135, 39869), (136, 39875), (137, 39881), (140, 39914), (141, 39956), (143, 39968), (145, 39986), (164, 40160), (166, 40169), (167, 40172), (169, 40175), (171, 40187), (175, 40199), (176, 40202), (178, 40217), (195, 40304), (197, 40319), (212, 40463), (213, 40475), (233, 40655), (236, 40673), (245, 40754), (249, 40790), (251, 40811), (255, 40877),

Gene: EmToTheThree\_93 Start: 37694, Stop: 40318, Start Num: 6

Candidate Starts for EmToTheThree\_93:

(Start: 6 @37694 has 151 MA's), (13, 37763), (Start: 14 @37769 has 2 MA's), (19, 37787), (24, 37823), (42, 37931), (45, 37943), (56, 38108), (57, 38114), (67, 38309), (70, 38330), (72, 38351), (73, 38360), (79, 38417), (81, 38459), (83, 38513), (84, 38558), (91, 38627), (93, 38663), (95, 38690), (97, 38717), (101, 38777), (104, 38810), (105, 38813), (109, 38843), (110, 38861), (117, 39002), (122, 39053), (135, 39263), (136, 39269), (140, 39308), (141, 39350), (143, 39362), (145, 39380), (164, 39554), (166, 39563), (167, 39566), (169, 39569), (171, 39581), (175, 39593), (176, 39596), (178, 39611), (195, 39698), (197, 39713), (212, 39857), (213, 39869), (233, 40049), (236, 40067), (245, 40148), (249, 40184), (251, 40205), (255, 40271),

Gene: EmmaElysia\_89 Start: 34815, Stop: 37439, Start Num: 6

Candidate Starts for EmmaElysia\_89:

(Start: 6 @34815 has 151 MA's), (13, 34884), (Start: 14 @34890 has 2 MA's), (19, 34908), (24, 34944), (42, 35052), (45, 35064), (56, 35229), (57, 35235), (67, 35430), (70, 35451), (72, 35472), (73, 35481), (79, 35538), (81, 35580), (83, 35634), (84, 35679), (91, 35748), (93, 35784), (95, 35811), (97, 35838), (101, 35898), (104, 35931), (105, 35934), (109, 35964), (110, 35982), (117, 36123), (122, 36174), (135, 36384), (136, 36390), (140, 36429), (141, 36471), (143, 36483), (145, 36501), (164, 36675), (166, 36684), (167, 36687), (169, 36690), (171, 36702), (175, 36714), (176, 36717), (178, 36732), (195, 36819), (197, 36834), (212, 36978), (213, 36990), (233, 37170), (236, 37188), (245, 37269), (249, 37305), (251, 37326), (255, 37392),

Gene: Erdmann\_91 Start: 36243, Stop: 38867, Start Num: 6

Candidate Starts for Erdmann\_91:

(Start: 6 @36243 has 151 MA's), (13, 36312), (Start: 14 @36318 has 2 MA's), (19, 36336), (24, 36372), (42, 36480), (45, 36492), (56, 36657), (57, 36663), (67, 36858), (70, 36879), (72, 36900), (73, 36909), (79, 36966), (81, 37008), (83, 37062), (84, 37107), (91, 37176), (93, 37212), (95, 37239), (97, 37266), (101, 37326), (104, 37359), (105, 37362), (109, 37392), (110, 37410), (117, 37551), (122, 37602), (135, 37812), (136, 37818), (140, 37857), (141, 37899), (143, 37911), (145, 37929), (164, 38103), (166, 38112), (167, 38115), (169, 38118), (171, 38130), (175, 38142), (176, 38145), (178, 38160), (195, 38247), (197, 38262), (212, 38406), (213, 38418), (233, 38598), (236, 38616), (245, 38697), (249, 38733), (251, 38754), (255, 38820),

Gene: ErnieJ\_86 Start: 34292, Stop: 36895, Start Num: 6

Candidate Starts for ErnieJ\_86:

(Start: 6 @34292 has 151 MA's), (13, 34361), (Start: 14 @34367 has 2 MA's), (19, 34385), (24, 34421), (42, 34529), (45, 34541), (56, 34706), (57, 34712), (67, 34907), (70, 34928), (72, 34949), (73, 34958), (79, 35015), (81, 35057), (83, 35111), (84, 35156), (91, 35225), (93, 35261), (95, 35288), (97, 35315), (101, 35375), (104, 35408), (105, 35411), (108, 35432), (110, 35459), (113, 35531), (117, 35600), (122, 35651), (135, 35861), (136, 35867), (137, 35873), (140, 35906), (141, 35948), (143, 35960), (145, 35978), (164, 36152), (166, 36161), (167, 36164), (169, 36167), (171, 36179), (175, 36191), (176, 36194), (178, 36209), (195, 36275), (197, 36290), (212, 36434), (213, 36446), (233, 36626), (236, 36644), (245, 36725), (249, 36761), (251, 36782), (255, 36848),

Gene: Ewok\_91 Start: 35870, Stop: 38494, Start Num: 6

Candidate Starts for Ewok\_91:

(Start: 6 @35870 has 151 MA's), (13, 35939), (Start: 14 @35945 has 2 MA's), (19, 35963), (24, 35999), (42, 36107), (45, 36119), (56, 36284), (57, 36290), (67, 36485), (70, 36506), (72, 36527), (73, 36536), (79, 36593), (81, 36635), (83, 36689), (84, 36734), (91, 36803), (93, 36839), (95, 36866), (97, 36893), (101, 36953), (104, 36986), (105, 36989), (109, 37019), (110, 37037), (117, 37178), (122, 37229), (135, 37439), (136, 37445), (140, 37484), (141, 37526), (143, 37538), (145, 37556), (164, 37730), (166, 37739), (167, 37742), (169, 37745), (171, 37757), (175, 37769), (176, 37772), (178, 37787), (195, 37874), (197, 37889), (212, 38033), (213, 38045), (233, 38225), (236, 38243), (245, 38324), (249, 38360), (251, 38381), (255, 38447),

Gene: Finch\_15 Start: 10444, Stop: 13083, Start Num: 10

Candidate Starts for Finch\_15:

(Start: 10 @10444 has 3 MA's), (30, 10603), (37, 10642), (44, 10675), (47, 10702), (53, 10783), (59, 10900), (60, 10906), (69, 11050), (70, 11062), (74, 11104), (75, 11107), (78, 11134), (92, 11353), (93, 11386), (101, 11500), (104, 11533), (107, 11551), (109, 11566), (112, 11629), (116, 11722), (117, 11725), (129, 11863), (130, 11893), (133, 11923), (136, 11992), (138, 12007), (141, 12073), (145, 12103), (149, 12133), (154, 12196), (165, 12277), (170, 12292), (172, 12301), (181, 12334), (193, 12391), (198, 12457), (206, 12556), (219, 12649), (222, 12682), (224, 12688), (237, 12826), (238, 12835), (242, 12868), (244, 12892), (247, 12913), (253, 13024), (255, 13036),

Gene: Flabslab\_85 Start: 34048, Stop: 36651, Start Num: 6

Candidate Starts for Flabslab\_85:

(Start: 6 @34048 has 151 MA's), (13, 34117), (Start: 14 @34123 has 2 MA's), (19, 34141), (24, 34177), (42, 34285), (45, 34297), (56, 34462), (57, 34468), (67, 34663), (70, 34684), (72, 34705), (73, 34714), (79, 34771), (81, 34813), (83, 34867), (84, 34912), (91, 34981), (93, 35017), (95, 35044), (97, 35071), (101, 35131), (104, 35164), (105, 35167), (108, 35188), (110, 35215), (113, 35287), (117, 35356), (122, 35407), (135, 35617), (136, 35623), (137, 35629), (140, 35662), (141, 35704), (143, 35716), (145, 35734), (164, 35908), (166, 35917), (167, 35920), (169, 35923), (171, 35935), (175, 35947), (176, 35950), (178, 35965), (195, 36031), (197, 36046), (212, 36190), (213, 36202), (233, 36382), (236, 36400), (245, 36481), (249, 36517), (251, 36538), (255, 36604),

Gene: Fludd\_90 Start: 34710, Stop: 37313, Start Num: 6

Candidate Starts for Fludd\_90:

(Start: 6 @34710 has 151 MA's), (13, 34779), (Start: 14 @34785 has 2 MA's), (19, 34803), (24, 34839), (42, 34947), (45, 34959), (56, 35124), (57, 35130), (67, 35325), (70, 35346), (72, 35367), (73, 35376), (79, 35433), (81, 35475), (83, 35529), (84, 35574), (91, 35643), (93, 35679), (95, 35706), (97, 35733), (101, 35793), (104, 35826), (105, 35829), (108, 35850), (110, 35877), (113, 35949), (117, 36018), (122, 36069), (135, 36279), (136, 36285), (137, 36291), (140, 36324), (141, 36366), (143, 36378), (145, 36396), (164, 36570), (166, 36579), (167, 36582), (169, 36585), (171, 36597), (175, 36609), (176, 36612), (178, 36627), (195, 36693), (197, 36708), (212, 36852), (213, 36864), (233, 37044), (236, 37062), (245, 37143), (249, 37179), (251, 37200), (255, 37266),

Gene: Fongie\_88 Start: 36083, Stop: 38707, Start Num: 6

Candidate Starts for Fongie\_88:

(Start: 6 @36083 has 151 MA's), (13, 36152), (Start: 14 @36158 has 2 MA's), (19, 36176), (24, 36212), (42, 36320), (45, 36332), (56, 36497), (57, 36503), (67, 36698), (70, 36719), (72, 36740), (73, 36749), (79, 36806), (81, 36848), (83, 36902), (84, 36947), (91, 37016), (93, 37052), (95, 37079), (97, 37106), (101, 37166), (104, 37199), (105, 37202), (109, 37232), (110, 37250), (117, 37391), (122, 37442), (135, 37652), (136, 37658), (140, 37697), (141, 37739), (143, 37751), (145, 37769), (164, 37943), (166, 37952), (167, 37955), (169, 37958), (171, 37970), (175, 37982), (176, 37985), (178, 38000), (195, 38087), (197, 38102), (212, 38246), (213, 38258), (233, 38438), (236, 38456), (245, 38537),

(249, 38573), (251, 38594), (255, 38660),

Gene: FoxtrotP1\_90 Start: 36642, Stop: 39266, Start Num: 6

Candidate Starts for FoxtrotP1\_90:

(Start: 6 @36642 has 151 MA's), (13, 36711), (Start: 14 @36717 has 2 MA's), (19, 36735), (24, 36771), (42, 36879), (45, 36891), (56, 37056), (57, 37062), (67, 37257), (70, 37278), (72, 37299), (73, 37308), (79, 37365), (81, 37407), (83, 37461), (84, 37506), (91, 37575), (93, 37611), (95, 37638), (97, 37665), (101, 37725), (104, 37758), (105, 37761), (109, 37791), (110, 37809), (117, 37950), (122, 38001), (135, 38211), (136, 38217), (140, 38256), (141, 38298), (143, 38310), (145, 38328), (164, 38502), (166, 38511), (167, 38514), (169, 38517), (171, 38529), (175, 38541), (176, 38544), (178, 38559), (195, 38646), (197, 38661), (212, 38805), (213, 38817), (233, 38997), (236, 39015), (245, 39096), (249, 39132), (251, 39153), (255, 39219),

Gene: FrayBell\_96 Start: 37692, Stop: 40316, Start Num: 6

Candidate Starts for FrayBell\_96:

(Start: 6 @37692 has 151 MA's), (13, 37761), (Start: 14 @37767 has 2 MA's), (19, 37785), (24, 37821), (42, 37929), (45, 37941), (56, 38106), (57, 38112), (67, 38307), (70, 38328), (72, 38349), (73, 38358), (79, 38415), (81, 38457), (83, 38511), (84, 38556), (91, 38625), (93, 38661), (95, 38688), (97, 38715), (101, 38775), (104, 38808), (105, 38811), (109, 38841), (110, 38859), (117, 39000), (122, 39051), (135, 39261), (136, 39267), (137, 39273), (140, 39306), (141, 39348), (143, 39360), (145, 39378), (164, 39552), (166, 39561), (167, 39564), (169, 39567), (171, 39579), (175, 39591), (176, 39594), (178, 39609), (195, 39696), (197, 39711), (212, 39855), (213, 39867), (233, 40047), (236, 40065), (245, 40146), (249, 40182), (251, 40203), (255, 40269),

Gene: FudgeTart\_90 Start: 35436, Stop: 38060, Start Num: 6

Candidate Starts for FudgeTart\_90:

(Start: 6 @35436 has 151 MA's), (13, 35505), (Start: 14 @35511 has 2 MA's), (19, 35529), (24, 35565), (42, 35673), (45, 35685), (56, 35850), (57, 35856), (67, 36051), (70, 36072), (72, 36093), (73, 36102), (79, 36159), (81, 36201), (83, 36255), (84, 36300), (91, 36369), (93, 36405), (95, 36432), (97, 36459), (101, 36519), (104, 36552), (105, 36555), (109, 36585), (110, 36603), (117, 36744), (122, 36795), (135, 37005), (136, 37011), (140, 37050), (141, 37092), (143, 37104), (145, 37122), (164, 37296), (166, 37305), (167, 37308), (169, 37311), (171, 37323), (175, 37335), (176, 37338), (178, 37353), (195, 37440), (197, 37455), (212, 37599), (213, 37611), (233, 37791), (236, 37809), (245, 37890), (249, 37926), (251, 37947), (255, 38013),

Gene: Gabriel\_92 Start: 35478, Stop: 38102, Start Num: 6

Candidate Starts for Gabriel\_92:

(Start: 6 @35478 has 151 MA's), (13, 35547), (Start: 14 @35553 has 2 MA's), (19, 35571), (24, 35607), (42, 35715), (45, 35727), (56, 35892), (57, 35898), (67, 36093), (70, 36114), (72, 36135), (73, 36144), (79, 36201), (81, 36243), (83, 36297), (84, 36342), (91, 36411), (93, 36447), (95, 36474), (97, 36501), (101, 36561), (104, 36594), (105, 36597), (109, 36627), (110, 36645), (117, 36786), (122, 36837), (135, 37047), (136, 37053), (140, 37092), (141, 37134), (143, 37146), (145, 37164), (164, 37338), (166, 37347), (167, 37350), (169, 37353), (171, 37365), (175, 37377), (176, 37380), (178, 37395), (195, 37482), (197, 37497), (212, 37641), (213, 37653), (233, 37833), (236, 37851), (245, 37932), (249, 37968), (251, 37989), (255, 38055),

Gene: Gamgam\_90 Start: 35248, Stop: 37872, Start Num: 6

Candidate Starts for Gamgam\_90:

(Start: 6 @35248 has 151 MA's), (13, 35317), (Start: 14 @35323 has 2 MA's), (19, 35341), (24, 35377), (42, 35485), (45, 35497), (56, 35662), (57, 35668), (67, 35863), (70, 35884), (72, 35905), (73, 35914), (79, 35971), (81, 36013), (83, 36067), (84, 36112), (91, 36181), (93, 36217), (95, 36244), (97, 36271), (101, 36331), (104, 36364), (105, 36367), (109, 36397), (110, 36415), (117, 36556), (122, 36607), (135, 36817), (136, 36823), (140, 36862), (141, 36904), (143, 36916), (145, 36934), (164, 37108),

(166, 37117), (167, 37120), (169, 37123), (171, 37135), (175, 37147), (176, 37150), (178, 37165), (195, 37252), (197, 37267), (212, 37411), (213, 37423), (233, 37603), (236, 37621), (245, 37702), (249, 37738), (251, 37759), (255, 37825),

Gene: Ghost\_89 Start: 35248, Stop: 37872, Start Num: 6

Candidate Starts for Ghost\_89:

(Start: 6 @35248 has 151 MA's), (13, 35317), (Start: 14 @35323 has 2 MA's), (19, 35341), (24, 35377), (42, 35485), (45, 35497), (56, 35662), (57, 35668), (67, 35863), (70, 35884), (72, 35905), (73, 35914), (79, 35971), (81, 36013), (83, 36067), (84, 36112), (91, 36181), (93, 36217), (95, 36244), (97, 36271), (101, 36331), (104, 36364), (105, 36367), (109, 36397), (110, 36415), (117, 36556), (122, 36607), (135, 36817), (136, 36823), (140, 36862), (141, 36904), (143, 36916), (145, 36934), (164, 37108), (166, 37117), (167, 37120), (169, 37123), (171, 37135), (175, 37147), (176, 37150), (178, 37165), (195, 37252), (197, 37267), (212, 37411), (213, 37423), (233, 37603), (236, 37621), (245, 37702), (249, 37738), (251, 37759), (255, 37825),

Gene: GlutenPhree\_88 Start: 35248, Stop: 37872, Start Num: 6

Candidate Starts for GlutenPhree\_88:

(Start: 6 @35248 has 151 MA's), (13, 35317), (Start: 14 @35323 has 2 MA's), (19, 35341), (24, 35377), (42, 35485), (45, 35497), (56, 35662), (57, 35668), (67, 35863), (70, 35884), (72, 35905), (73, 35914), (79, 35971), (81, 36013), (83, 36067), (84, 36112), (91, 36181), (93, 36217), (95, 36244), (97, 36271), (101, 36331), (104, 36364), (105, 36367), (109, 36397), (110, 36415), (117, 36556), (122, 36607), (135, 36817), (136, 36823), (140, 36862), (141, 36904), (143, 36916), (145, 36934), (164, 37108), (166, 37117), (167, 37120), (169, 37123), (171, 37135), (175, 37147), (176, 37150), (178, 37165), (195, 37252), (197, 37267), (212, 37411), (213, 37423), (233, 37603), (236, 37621), (245, 37702), (249, 37738), (251, 37759), (255, 37825),

Gene: Grasshills\_97 Start: 38300, Stop: 40924, Start Num: 6

Candidate Starts for Grasshills\_97:

(Start: 6 @38300 has 151 MA's), (13, 38369), (Start: 14 @38375 has 2 MA's), (19, 38393), (24, 38429), (42, 38537), (45, 38549), (57, 38720), (67, 38915), (70, 38936), (72, 38957), (73, 38966), (79, 39023), (81, 39065), (83, 39119), (84, 39164), (91, 39233), (93, 39269), (95, 39296), (97, 39323), (101, 39383), (104, 39416), (105, 39419), (109, 39449), (110, 39467), (117, 39608), (122, 39659), (135, 39869), (136, 39875), (137, 39881), (140, 39914), (141, 39956), (143, 39968), (145, 39986), (164, 40160), (166, 40169), (167, 40172), (169, 40175), (171, 40187), (175, 40199), (176, 40202), (178, 40217), (195, 40304), (197, 40319), (212, 40463), (213, 40475), (233, 40655), (236, 40673), (245, 40754), (249, 40790), (251, 40811), (255, 40877),

Gene: Greely\_91 Start: 37183, Stop: 39693, Start Num: 14

Candidate Starts for Greely\_91:

(Start: 14 @37183 has 2 MA's), (17, 37189), (22, 37228), (25, 37246), (32, 37291), (34, 37312), (37, 37330), (39, 37339), (42, 37360), (54, 37498), (57, 37543), (59, 37591), (67, 37738), (70, 37759), (72, 37780), (73, 37789), (74, 37801), (75, 37804), (77, 37828), (84, 37987), (91, 38056), (93, 38092), (105, 38242), (109, 38272), (110, 38290), (115, 38419), (116, 38428), (117, 38431), (118, 38434), (124, 38530), (125, 38536), (130, 38599), (132, 38623), (135, 38692), (136, 38698), (137, 38704), (139, 38719), (140, 38737), (143, 38791), (145, 38809), (157, 38938), (162, 38971), (164, 38983), (167, 38995), (175, 39022), (178, 39040), (196, 39145), (232, 39448), (239, 39490), (257, 39667),

Gene: Grungle\_77 Start: 32630, Stop: 35254, Start Num: 6

Candidate Starts for Grungle\_77:

(Start: 6 @32630 has 151 MA's), (13, 32699), (Start: 14 @32705 has 2 MA's), (19, 32723), (24, 32759), (42, 32867), (45, 32879), (56, 33044), (57, 33050), (67, 33245), (70, 33266), (72, 33287), (73, 33296), (79, 33353), (81, 33395), (83, 33449), (84, 33494), (91, 33563), (93, 33599), (95, 33626), (97, 33653), (101, 33713), (104, 33746), (105, 33749), (109, 33779), (110, 33797), (117, 33938), (122, 33989),

(135, 34199), (136, 34205), (140, 34244), (141, 34286), (143, 34298), (145, 34316), (164, 34490), (166, 34499), (167, 34502), (169, 34505), (171, 34517), (175, 34529), (176, 34532), (178, 34547), (195, 34634), (197, 34649), (212, 34793), (213, 34805), (233, 34985), (236, 35003), (245, 35084), (249, 35120), (251, 35141), (255, 35207),

Gene: Guwapp\_89 Start: 35343, Stop: 37967, Start Num: 6

Candidate Starts for Guwapp\_89:

(Start: 6 @35343 has 151 MA's), (13, 35412), (Start: 14 @35418 has 2 MA's), (19, 35436), (24, 35472), (42, 35580), (45, 35592), (56, 35757), (57, 35763), (67, 35958), (70, 35979), (72, 36000), (73, 36009), (79, 36066), (81, 36108), (83, 36162), (84, 36207), (91, 36276), (93, 36312), (95, 36339), (97, 36366), (101, 36426), (104, 36459), (105, 36462), (109, 36492), (110, 36510), (117, 36651), (122, 36702), (135, 36912), (136, 36918), (140, 36957), (141, 36999), (143, 37011), (145, 37029), (164, 37203), (166, 37212), (167, 37215), (169, 37218), (171, 37230), (175, 37242), (176, 37245), (178, 37260), (195, 37347), (197, 37362), (212, 37506), (213, 37518), (233, 37698), (236, 37716), (245, 37797), (249, 37833), (251, 37854), (255, 37920),

Gene: Halldule\_83 Start: 33660, Stop: 36284, Start Num: 6

Candidate Starts for Halldule\_83:

(Start: 6 @33660 has 151 MA's), (13, 33729), (Start: 14 @33735 has 2 MA's), (19, 33753), (24, 33789), (42, 33897), (45, 33909), (56, 34074), (57, 34080), (67, 34275), (70, 34296), (72, 34317), (73, 34326), (79, 34383), (81, 34425), (83, 34479), (84, 34524), (91, 34593), (93, 34629), (95, 34656), (97, 34683), (101, 34743), (104, 34776), (105, 34779), (109, 34809), (110, 34827), (117, 34968), (122, 35019), (135, 35229), (136, 35235), (140, 35274), (141, 35316), (143, 35328), (145, 35346), (164, 35520), (166, 35529), (167, 35532), (169, 35535), (171, 35547), (175, 35559), (176, 35562), (178, 35577), (195, 35664), (197, 35679), (212, 35823), (213, 35835), (233, 36015), (236, 36033), (245, 36114), (249, 36150), (251, 36171), (255, 36237),

Gene: HyRo\_82 Start: 34439, Stop: 37042, Start Num: 6

Candidate Starts for HyRo\_82:

(Start: 6 @34439 has 151 MA's), (13, 34508), (Start: 14 @34514 has 2 MA's), (19, 34532), (24, 34568), (42, 34676), (45, 34688), (56, 34853), (57, 34859), (67, 35054), (70, 35075), (72, 35096), (73, 35105), (79, 35162), (81, 35204), (83, 35258), (84, 35303), (91, 35372), (93, 35408), (95, 35435), (97, 35462), (101, 35522), (104, 35555), (105, 35558), (108, 35579), (110, 35606), (113, 35678), (117, 35747), (122, 35798), (135, 36008), (136, 36014), (137, 36020), (140, 36053), (141, 36095), (143, 36107), (145, 36125), (164, 36299), (166, 36308), (167, 36311), (169, 36314), (171, 36326), (175, 36338), (176, 36341), (178, 36356), (195, 36422), (197, 36437), (212, 36581), (213, 36593), (233, 36773), (236, 36791), (245, 36872), (249, 36908), (251, 36929), (255, 36995),

Gene: I3\_96 Start: 36210, Stop: 38834, Start Num: 6

Candidate Starts for I3\_96:

(Start: 6 @36210 has 151 MA's), (13, 36279), (Start: 14 @36285 has 2 MA's), (19, 36303), (24, 36339), (42, 36447), (45, 36459), (56, 36624), (57, 36630), (67, 36825), (70, 36846), (72, 36867), (73, 36876), (79, 36933), (81, 36975), (83, 37029), (84, 37074), (91, 37143), (93, 37179), (95, 37206), (97, 37233), (101, 37293), (104, 37326), (105, 37329), (109, 37359), (110, 37377), (117, 37518), (122, 37569), (135, 37779), (136, 37785), (137, 37791), (140, 37824), (141, 37866), (143, 37878), (145, 37896), (164, 38070), (166, 38079), (167, 38082), (169, 38085), (171, 38097), (175, 38109), (176, 38112), (178, 38127), (195, 38214), (197, 38229), (212, 38373), (213, 38385), (233, 38565), (236, 38583), (245, 38664), (249, 38700), (251, 38721), (255, 38787),

Gene: IkeLoa\_84 Start: 34608, Stop: 37232, Start Num: 6

Candidate Starts for IkeLoa\_84:

(Start: 6 @34608 has 151 MA's), (13, 34677), (Start: 14 @34683 has 2 MA's), (19, 34701), (24, 34737), (42, 34845), (45, 34857), (56, 35022), (57, 35028), (67, 35223), (70, 35244), (72, 35265), (73, 35274),

(79, 35331), (81, 35373), (83, 35427), (84, 35472), (91, 35541), (93, 35577), (95, 35604), (97, 35631), (101, 35691), (104, 35724), (105, 35727), (109, 35757), (110, 35775), (117, 35916), (122, 35967), (135, 36177), (136, 36183), (137, 36189), (140, 36222), (141, 36264), (143, 36276), (145, 36294), (164, 36468), (166, 36477), (167, 36480), (169, 36483), (171, 36495), (175, 36507), (176, 36510), (178, 36525), (195, 36612), (197, 36627), (212, 36771), (213, 36783), (233, 36963), (236, 36981), (245, 37062), (249, 37098), (251, 37119), (255, 37185),

Gene: InigoMontoya\_91 Start: 35209, Stop: 37833, Start Num: 6

Candidate Starts for InigoMontoya\_91:

(Start: 6 @35209 has 151 MA's), (13, 35278), (Start: 14 @35284 has 2 MA's), (19, 35302), (24, 35338), (42, 35446), (45, 35458), (56, 35623), (57, 35629), (67, 35824), (70, 35845), (72, 35866), (73, 35875), (79, 35932), (81, 35974), (83, 36028), (84, 36073), (91, 36142), (93, 36178), (95, 36205), (97, 36232), (101, 36292), (104, 36325), (105, 36328), (109, 36358), (110, 36376), (117, 36517), (122, 36568), (135, 36778), (136, 36784), (140, 36823), (141, 36865), (143, 36877), (145, 36895), (164, 37069), (166, 37078), (167, 37081), (169, 37084), (171, 37096), (175, 37108), (176, 37111), (178, 37126), (195, 37213), (197, 37228), (212, 37372), (213, 37384), (233, 37564), (236, 37582), (245, 37663), (249, 37699), (251, 37720), (255, 37786),

Gene: InterFolia\_99 Start: 38630, Stop: 41254, Start Num: 6

Candidate Starts for InterFolia\_99:

(Start: 6 @38630 has 151 MA's), (13, 38699), (Start: 14 @38705 has 2 MA's), (19, 38723), (24, 38759), (42, 38867), (45, 38879), (56, 39044), (57, 39050), (67, 39245), (70, 39266), (72, 39287), (73, 39296), (79, 39353), (81, 39395), (83, 39449), (84, 39494), (91, 39563), (93, 39599), (95, 39626), (97, 39653), (101, 39713), (104, 39746), (105, 39749), (109, 39779), (110, 39797), (117, 39938), (122, 39989), (135, 40199), (136, 40205), (137, 40211), (140, 40244), (141, 40286), (143, 40298), (145, 40316), (164, 40490), (166, 40499), (167, 40502), (169, 40505), (171, 40517), (175, 40529), (176, 40532), (178, 40547), (195, 40634), (197, 40649), (212, 40793), (213, 40805), (233, 40985), (236, 41003), (245, 41084), (249, 41120), (251, 41141), (255, 41207),

Gene: Iota\_84 Start: 34989, Stop: 37613, Start Num: 6

Candidate Starts for Iota\_84:

(Start: 6 @34989 has 151 MA's), (13, 35058), (Start: 14 @35064 has 2 MA's), (19, 35082), (24, 35118), (42, 35226), (45, 35238), (56, 35403), (57, 35409), (67, 35604), (70, 35625), (72, 35646), (73, 35655), (79, 35712), (81, 35754), (83, 35808), (84, 35853), (91, 35922), (93, 35958), (95, 35985), (97, 36012), (101, 36072), (104, 36105), (105, 36108), (109, 36138), (110, 36156), (117, 36297), (122, 36348), (135, 36558), (136, 36564), (140, 36603), (141, 36645), (143, 36657), (145, 36675), (164, 36849), (166, 36858), (167, 36861), (169, 36864), (171, 36876), (175, 36888), (176, 36891), (178, 36906), (195, 36993), (197, 37008), (212, 37152), (213, 37164), (233, 37344), (236, 37362), (245, 37443), (249, 37479), (251, 37500), (255, 37566),

Gene: Issimir\_89 Start: 36186, Stop: 38810, Start Num: 6

Candidate Starts for Issimir\_89:

(Start: 6 @36186 has 151 MA's), (13, 36255), (Start: 14 @36261 has 2 MA's), (19, 36279), (24, 36315), (42, 36423), (45, 36435), (56, 36600), (57, 36606), (67, 36801), (70, 36822), (72, 36843), (73, 36852), (79, 36909), (81, 36951), (83, 37005), (84, 37050), (91, 37119), (93, 37155), (95, 37182), (97, 37209), (101, 37269), (104, 37302), (105, 37305), (109, 37335), (110, 37353), (117, 37494), (122, 37545), (135, 37755), (136, 37761), (140, 37800), (141, 37842), (143, 37854), (145, 37872), (164, 38046), (166, 38055), (167, 38058), (169, 38061), (171, 38073), (175, 38085), (176, 38088), (178, 38103), (195, 38190), (197, 38205), (212, 38349), (213, 38361), (233, 38541), (236, 38559), (245, 38640), (249, 38676), (251, 38697), (255, 38763),

Gene: Izajani\_90 Start: 36259, Stop: 38883, Start Num: 6

Candidate Starts for Izajani\_90:

(Start: 6 @36259 has 151 MA's), (13, 36328), (Start: 14 @36334 has 2 MA's), (19, 36352), (24, 36388), (42, 36496), (45, 36508), (56, 36673), (57, 36679), (67, 36874), (70, 36895), (72, 36916), (73, 36925), (79, 36982), (81, 37024), (83, 37078), (84, 37123), (91, 37192), (93, 37228), (95, 37255), (97, 37282), (101, 37342), (104, 37375), (105, 37378), (109, 37408), (110, 37426), (117, 37567), (122, 37618), (135, 37828), (136, 37834), (140, 37873), (141, 37915), (143, 37927), (145, 37945), (164, 38119), (166, 38128), (167, 38131), (169, 38134), (171, 38146), (175, 38158), (176, 38161), (178, 38176), (195, 38263), (197, 38278), (212, 38422), (213, 38434), (233, 38614), (236, 38632), (245, 38713), (249, 38749), (251, 38770), (255, 38836),

Gene: Janiyra\_92 Start: 35540, Stop: 38143, Start Num: 6

Candidate Starts for Janiyra\_92:

(Start: 6 @35540 has 151 MA's), (13, 35609), (Start: 14 @35615 has 2 MA's), (19, 35633), (24, 35669), (42, 35777), (45, 35789), (56, 35954), (57, 35960), (67, 36155), (70, 36176), (72, 36197), (73, 36206), (79, 36263), (81, 36305), (83, 36359), (84, 36404), (91, 36473), (93, 36509), (95, 36536), (97, 36563), (101, 36623), (104, 36656), (105, 36659), (108, 36680), (110, 36707), (113, 36779), (117, 36848), (122, 36899), (135, 37109), (136, 37115), (137, 37121), (140, 37154), (141, 37196), (143, 37208), (145, 37226), (164, 37400), (166, 37409), (167, 37412), (169, 37415), (171, 37427), (175, 37439), (176, 37442), (178, 37457), (195, 37523), (197, 37538), (212, 37682), (213, 37694), (233, 37874), (236, 37892), (245, 37973), (249, 38009), (251, 38030), (255, 38096),

Gene: JeanGrey\_27 Start: 14251, Stop: 16443, Start Num: 16

Candidate Starts for JeanGrey\_27:

(16, 14251), (36, 14386), (43, 14410), (44, 14413), (51, 14503), (55, 14554), (57, 14590), (59, 14638), (62, 14671), (63, 14680), (65, 14740), (68, 14782), (84, 15013), (86, 15025), (88, 15058), (91, 15082), (92, 15085), (101, 15235), (104, 15268), (116, 15457), (117, 15460), (121, 15505), (126, 15574), (134, 15703), (135, 15721), (145, 15838), (146, 15841), (162, 15985), (168, 16000), (199, 16126), (208, 16207), (209, 16210), (231, 16408),

Gene: Jessibeth14\_89 Start: 36028, Stop: 38652, Start Num: 6

Candidate Starts for Jessibeth14\_89:

(Start: 6 @36028 has 151 MA's), (13, 36097), (Start: 14 @36103 has 2 MA's), (19, 36121), (24, 36157), (42, 36265), (45, 36277), (56, 36442), (57, 36448), (67, 36643), (70, 36664), (72, 36685), (73, 36694), (79, 36751), (81, 36793), (83, 36847), (84, 36892), (91, 36961), (93, 36997), (95, 37024), (97, 37051), (101, 37111), (104, 37144), (105, 37147), (109, 37177), (110, 37195), (117, 37336), (122, 37387), (135, 37597), (136, 37603), (140, 37642), (141, 37684), (143, 37696), (145, 37714), (164, 37888), (166, 37897), (167, 37900), (169, 37903), (171, 37915), (175, 37927), (176, 37930), (178, 37945), (195, 38032), (197, 38047), (212, 38191), (213, 38203), (233, 38383), (236, 38401), (245, 38482), (249, 38518), (251, 38539), (255, 38605),

Gene: Jezreel\_88 Start: 35942, Stop: 38566, Start Num: 6

Candidate Starts for Jezreel\_88:

(Start: 6 @35942 has 151 MA's), (13, 36011), (Start: 14 @36017 has 2 MA's), (19, 36035), (24, 36071), (42, 36179), (45, 36191), (56, 36356), (57, 36362), (67, 36557), (70, 36578), (72, 36599), (73, 36608), (79, 36665), (81, 36707), (83, 36761), (84, 36806), (91, 36875), (93, 36911), (95, 36938), (97, 36965), (101, 37025), (104, 37058), (105, 37061), (109, 37091), (110, 37109), (117, 37250), (122, 37301), (135, 37511), (136, 37517), (137, 37523), (140, 37556), (141, 37598), (143, 37610), (145, 37628), (164, 37802), (166, 37811), (167, 37814), (169, 37817), (171, 37829), (175, 37841), (176, 37844), (178, 37859), (195, 37946), (197, 37961), (212, 38105), (213, 38117), (233, 38297), (236, 38315), (245, 38396), (249, 38432), (251, 38453), (255, 38519),

Gene: JigglyPuff\_96 Start: 37803, Stop: 40427, Start Num: 6

Candidate Starts for JigglyPuff\_96:

(3, 37755), (Start: 6 @37803 has 151 MA's), (13, 37872), (Start: 14 @37878 has 2 MA's), (19, 37896), (24, 37932), (42, 38040), (45, 38052), (56, 38217), (57, 38223), (67, 38418), (70, 38439), (72, 38460), (73, 38469), (79, 38526), (81, 38568), (83, 38622), (84, 38667), (91, 38736), (93, 38772), (95, 38799), (97, 38826), (101, 38886), (104, 38919), (105, 38922), (109, 38952), (110, 38970), (117, 39111), (122, 39162), (135, 39372), (136, 39378), (137, 39384), (140, 39417), (141, 39459), (143, 39471), (145, 39489), (164, 39663), (166, 39672), (167, 39675), (169, 39678), (171, 39690), (175, 39702), (176, 39705), (178, 39720), (195, 39807), (197, 39822), (212, 39966), (213, 39978), (233, 40158), (236, 40176), (245, 40257), (249, 40293), (251, 40314), (255, 40380),

Gene: JulietS\_83 Start: 33511, Stop: 36135, Start Num: 6

Candidate Starts for JulietS\_83:

(Start: 6 @33511 has 151 MA's), (13, 33580), (Start: 14 @33586 has 2 MA's), (19, 33604), (24, 33640), (42, 33748), (45, 33760), (56, 33925), (57, 33931), (67, 34126), (70, 34147), (72, 34168), (73, 34177), (79, 34234), (81, 34276), (83, 34330), (84, 34375), (91, 34444), (93, 34480), (95, 34507), (97, 34534), (101, 34594), (104, 34627), (105, 34630), (109, 34660), (110, 34678), (117, 34819), (122, 34870), (135, 35080), (136, 35086), (140, 35125), (141, 35167), (143, 35179), (145, 35197), (164, 35371), (166, 35380), (167, 35383), (169, 35386), (171, 35398), (175, 35410), (176, 35413), (178, 35428), (195, 35515), (197, 35530), (212, 35674), (213, 35686), (233, 35866), (236, 35884), (245, 35965), (249, 36001), (251, 36022), (255, 36088),

Gene: JustHall\_86 Start: 35178, Stop: 37781, Start Num: 6

Candidate Starts for JustHall\_86:

(Start: 6 @35178 has 151 MA's), (13, 35247), (Start: 14 @35253 has 2 MA's), (19, 35271), (24, 35307), (42, 35415), (45, 35427), (56, 35592), (57, 35598), (67, 35793), (70, 35814), (72, 35835), (73, 35844), (79, 35901), (81, 35943), (83, 35997), (84, 36042), (91, 36111), (93, 36147), (95, 36174), (97, 36201), (101, 36261), (104, 36294), (105, 36297), (108, 36318), (110, 36345), (113, 36417), (117, 36486), (122, 36537), (135, 36747), (136, 36753), (137, 36759), (140, 36792), (141, 36834), (143, 36846), (145, 36864), (164, 37038), (166, 37047), (167, 37050), (169, 37053), (171, 37065), (175, 37077), (176, 37080), (178, 37095), (195, 37161), (197, 37176), (212, 37320), (213, 37332), (233, 37512), (236, 37530), (245, 37611), (249, 37647), (251, 37668), (255, 37734),

Gene: Kamryn\_90 Start: 36767, Stop: 39391, Start Num: 6

Candidate Starts for Kamryn\_90:

(Start: 6 @36767 has 151 MA's), (13, 36836), (Start: 14 @36842 has 2 MA's), (19, 36860), (24, 36896), (42, 37004), (45, 37016), (56, 37181), (57, 37187), (67, 37382), (70, 37403), (72, 37424), (73, 37433), (79, 37490), (81, 37532), (83, 37586), (84, 37631), (91, 37700), (93, 37736), (95, 37763), (97, 37790), (101, 37850), (104, 37883), (105, 37886), (109, 37916), (110, 37934), (117, 38075), (122, 38126), (135, 38336), (136, 38342), (140, 38381), (141, 38423), (143, 38435), (145, 38453), (164, 38627), (166, 38636), (167, 38639), (169, 38642), (171, 38654), (175, 38666), (176, 38669), (178, 38684), (195, 38771), (197, 38786), (212, 38930), (213, 38942), (233, 39122), (236, 39140), (245, 39221), (249, 39257), (251, 39278), (255, 39344),

Gene: Kboogie\_93 Start: 34822, Stop: 37425, Start Num: 6

Candidate Starts for Kboogie\_93:

(Start: 6 @34822 has 151 MA's), (13, 34891), (Start: 14 @34897 has 2 MA's), (19, 34915), (24, 34951), (42, 35059), (45, 35071), (56, 35236), (57, 35242), (67, 35437), (70, 35458), (72, 35479), (73, 35488), (79, 35545), (81, 35587), (83, 35641), (84, 35686), (91, 35755), (93, 35791), (95, 35818), (97, 35845), (101, 35905), (104, 35938), (105, 35941), (108, 35962), (110, 35989), (113, 36061), (117, 36130), (122, 36181), (135, 36391), (136, 36397), (137, 36403), (140, 36436), (141, 36478), (143, 36490), (145, 36508), (164, 36682), (166, 36691), (167, 36694), (169, 36697), (171, 36709), (175, 36721), (176, 36724), (178, 36739), (195, 36805), (197, 36820), (212, 36964), (213, 36976), (233, 37156), (236, 37174), (245, 37255), (249, 37291), (251, 37312), (255, 37378),



Gene: Khaleesi\_89 Start: 35990, Stop: 38614, Start Num: 6

Candidate Starts for Khaleesi\_89:

(Start: 6 @35990 has 151 MA's), (13, 36059), (Start: 14 @36065 has 2 MA's), (19, 36083), (24, 36119), (42, 36227), (45, 36239), (56, 36404), (57, 36410), (67, 36605), (70, 36626), (72, 36647), (73, 36656), (79, 36713), (81, 36755), (83, 36809), (84, 36854), (91, 36923), (93, 36959), (95, 36986), (97, 37013), (101, 37073), (104, 37106), (105, 37109), (109, 37139), (110, 37157), (117, 37298), (122, 37349), (135, 37559), (136, 37565), (140, 37604), (141, 37646), (143, 37658), (145, 37676), (164, 37850), (166, 37859), (167, 37862), (169, 37865), (171, 37877), (175, 37889), (176, 37892), (178, 37907), (195, 37994), (197, 38009), (212, 38153), (213, 38165), (233, 38345), (236, 38363), (245, 38444), (249, 38480), (251, 38501), (255, 38567),

Gene: Koguma\_86 Start: 33731, Stop: 36355, Start Num: 6

Candidate Starts for Koguma\_86:

(Start: 6 @33731 has 151 MA's), (13, 33800), (Start: 14 @33806 has 2 MA's), (19, 33824), (24, 33860), (42, 33968), (45, 33980), (56, 34145), (57, 34151), (67, 34346), (70, 34367), (72, 34388), (73, 34397), (79, 34454), (81, 34496), (83, 34550), (84, 34595), (91, 34664), (93, 34700), (95, 34727), (97, 34754), (101, 34814), (104, 34847), (105, 34850), (109, 34880), (110, 34898), (117, 35039), (122, 35090), (135, 35300), (136, 35306), (140, 35345), (141, 35387), (143, 35399), (145, 35417), (164, 35591), (166, 35600), (167, 35603), (169, 35606), (171, 35618), (175, 35630), (176, 35633), (178, 35648), (195, 35735), (197, 35750), (212, 35894), (213, 35906), (233, 36086), (236, 36104), (245, 36185), (249, 36221), (251, 36242), (255, 36308),

Gene: LRRHood\_84 Start: 35550, Stop: 38174, Start Num: 6

Candidate Starts for LRRHood\_84:

(Start: 6 @35550 has 151 MA's), (13, 35619), (Start: 14 @35625 has 2 MA's), (19, 35643), (24, 35679), (42, 35787), (45, 35799), (56, 35964), (57, 35970), (67, 36165), (70, 36186), (72, 36207), (73, 36216), (79, 36273), (81, 36315), (83, 36369), (84, 36414), (91, 36483), (93, 36519), (95, 36546), (97, 36573), (101, 36633), (104, 36666), (105, 36669), (109, 36699), (110, 36717), (117, 36858), (122, 36909), (135, 37119), (136, 37125), (140, 37164), (141, 37206), (143, 37218), (145, 37236), (164, 37410), (166, 37419), (167, 37422), (169, 37425), (171, 37437), (175, 37449), (176, 37452), (178, 37467), (195, 37554), (197, 37569), (212, 37713), (213, 37725), (233, 37905), (236, 37923), (245, 38004), (249, 38040), (251, 38061), (255, 38127),

Gene: Latch\_90 Start: 35248, Stop: 37872, Start Num: 6

Candidate Starts for Latch\_90:

(Start: 6 @35248 has 151 MA's), (13, 35317), (Start: 14 @35323 has 2 MA's), (19, 35341), (24, 35377), (42, 35485), (45, 35497), (56, 35662), (57, 35668), (67, 35863), (70, 35884), (72, 35905), (73, 35914), (79, 35971), (81, 36013), (83, 36067), (84, 36112), (91, 36181), (93, 36217), (95, 36244), (97, 36271), (101, 36331), (104, 36364), (105, 36367), (109, 36397), (110, 36415), (117, 36556), (122, 36607), (135, 36817), (136, 36823), (140, 36862), (141, 36904), (143, 36916), (145, 36934), (164, 37108), (166, 37117), (167, 37120), (169, 37123), (171, 37135), (175, 37147), (176, 37150), (178, 37165), (195, 37252), (197, 37267), (212, 37411), (213, 37423), (233, 37603), (236, 37621), (245, 37702), (249, 37738), (251, 37759), (255, 37825),

Gene: Lee7\_88 Start: 35853, Stop: 38477, Start Num: 6

Candidate Starts for Lee7\_88:

(Start: 6 @35853 has 151 MA's), (13, 35922), (Start: 14 @35928 has 2 MA's), (19, 35946), (24, 35982), (42, 36090), (45, 36102), (56, 36267), (57, 36273), (67, 36468), (70, 36489), (72, 36510), (73, 36519), (79, 36576), (81, 36618), (83, 36672), (84, 36717), (91, 36786), (93, 36822), (95, 36849), (97, 36876), (101, 36936), (104, 36969), (105, 36972), (109, 37002), (110, 37020), (117, 37161), (122, 37212), (135, 37422), (136, 37428), (140, 37467), (141, 37509), (143, 37521), (145, 37539), (164, 37713), (166, 37722), (167, 37725), (169, 37728), (171, 37740), (175, 37752), (176, 37755), (178, 37770), (195, 37857), (197, 37872), (212, 38016), (213, 38028), (233, 38208), (236, 38226), (245, 38307),

(249, 38343), (251, 38364), (255, 38430),

Gene: Lethe\_90 Start: 36438, Stop: 39062, Start Num: 6

Candidate Starts for Lethe\_90:

(Start: 6 @36438 has 151 MA's), (13, 36507), (Start: 14 @36513 has 2 MA's), (19, 36531), (24, 36567), (42, 36675), (45, 36687), (56, 36852), (57, 36858), (67, 37053), (70, 37074), (72, 37095), (73, 37104), (79, 37161), (81, 37203), (83, 37257), (84, 37302), (91, 37371), (93, 37407), (95, 37434), (97, 37461), (101, 37521), (104, 37554), (105, 37557), (109, 37587), (110, 37605), (117, 37746), (122, 37797), (135, 38007), (136, 38013), (140, 38052), (141, 38094), (143, 38106), (145, 38124), (164, 38298), (166, 38307), (167, 38310), (169, 38313), (171, 38325), (175, 38337), (176, 38340), (178, 38355), (195, 38442), (197, 38457), (212, 38601), (213, 38613), (233, 38793), (236, 38811), (245, 38892), (249, 38928), (251, 38949), (255, 39015),

Gene: LinStu\_90 Start: 36614, Stop: 39238, Start Num: 6

Candidate Starts for LinStu\_90:

(Start: 6 @36614 has 151 MA's), (13, 36683), (Start: 14 @36689 has 2 MA's), (19, 36707), (24, 36743), (42, 36851), (45, 36863), (56, 37028), (57, 37034), (67, 37229), (70, 37250), (72, 37271), (73, 37280), (79, 37337), (81, 37379), (83, 37433), (84, 37478), (91, 37547), (93, 37583), (95, 37610), (97, 37637), (101, 37697), (104, 37730), (105, 37733), (109, 37763), (110, 37781), (117, 37922), (122, 37973), (135, 38183), (136, 38189), (140, 38228), (141, 38270), (143, 38282), (145, 38300), (164, 38474), (166, 38483), (167, 38486), (169, 38489), (171, 38501), (175, 38513), (176, 38516), (178, 38531), (195, 38618), (197, 38633), (212, 38777), (213, 38789), (233, 38969), (236, 38987), (245, 39068), (249, 39104), (251, 39125), (255, 39191),

Gene: Littleton\_90 Start: 35203, Stop: 37827, Start Num: 6

Candidate Starts for Littleton\_90:

(Start: 6 @35203 has 151 MA's), (13, 35272), (Start: 14 @35278 has 2 MA's), (19, 35296), (24, 35332), (42, 35440), (45, 35452), (56, 35617), (57, 35623), (67, 35818), (70, 35839), (72, 35860), (73, 35869), (79, 35926), (81, 35968), (83, 36022), (84, 36067), (91, 36136), (93, 36172), (95, 36199), (97, 36226), (101, 36286), (102, 36298), (104, 36319), (105, 36322), (109, 36352), (110, 36370), (117, 36511), (122, 36562), (135, 36772), (136, 36778), (140, 36817), (141, 36859), (143, 36871), (145, 36889), (164, 37063), (166, 37072), (167, 37075), (169, 37078), (171, 37090), (175, 37102), (176, 37105), (178, 37120), (195, 37207), (197, 37222), (212, 37366), (213, 37378), (233, 37558), (236, 37576), (245, 37657), (249, 37693), (251, 37714), (255, 37780),

Gene: Loanshark\_90 Start: 36243, Stop: 38867, Start Num: 6

Candidate Starts for Loanshark\_90:

(Start: 6 @36243 has 151 MA's), (13, 36312), (Start: 14 @36318 has 2 MA's), (19, 36336), (24, 36372), (42, 36480), (45, 36492), (56, 36657), (57, 36663), (67, 36858), (70, 36879), (72, 36900), (73, 36909), (79, 36966), (81, 37008), (83, 37062), (84, 37107), (91, 37176), (93, 37212), (95, 37239), (97, 37266), (101, 37326), (104, 37359), (105, 37362), (109, 37392), (110, 37410), (117, 37551), (122, 37602), (135, 37812), (136, 37818), (140, 37857), (141, 37899), (143, 37911), (145, 37929), (164, 38103), (166, 38112), (167, 38115), (169, 38118), (171, 38130), (175, 38142), (176, 38145), (178, 38160), (195, 38247), (197, 38262), (212, 38406), (213, 38418), (233, 38598), (236, 38616), (245, 38697), (249, 38733), (251, 38754), (255, 38820),

Gene: LolaVinca\_92 Start: 37349, Stop: 39973, Start Num: 6

Candidate Starts for LolaVinca\_92:

(Start: 6 @37349 has 151 MA's), (13, 37418), (Start: 14 @37424 has 2 MA's), (19, 37442), (24, 37478), (42, 37586), (45, 37598), (56, 37763), (57, 37769), (67, 37964), (70, 37985), (72, 38006), (73, 38015), (79, 38072), (81, 38114), (83, 38168), (84, 38213), (91, 38282), (93, 38318), (95, 38345), (97, 38372), (101, 38432), (102, 38444), (104, 38465), (105, 38468), (109, 38498), (110, 38516), (117, 38657), (122, 38708), (135, 38918), (136, 38924), (140, 38963), (141, 39005), (143, 39017), (145, 39035),

(164, 39209), (166, 39218), (167, 39221), (169, 39224), (171, 39236), (175, 39248), (176, 39251),  
(178, 39266), (195, 39353), (197, 39368), (212, 39512), (213, 39524), (233, 39704), (236, 39722),  
(245, 39803), (249, 39839), (251, 39860), (255, 39926),

Gene: LordLeafolot\_95 Start: 38340, Stop: 40964, Start Num: 6

Candidate Starts for LordLeafolot\_95:

(Start: 6 @38340 has 151 MA's), (13, 38409), (Start: 14 @38415 has 2 MA's), (19, 38433), (24, 38469),  
(42, 38577), (45, 38589), (56, 38754), (57, 38760), (67, 38955), (70, 38976), (72, 38997), (73, 39006),  
(79, 39063), (81, 39105), (83, 39159), (84, 39204), (91, 39273), (93, 39309), (95, 39336), (97, 39363),  
(101, 39423), (104, 39456), (105, 39459), (109, 39489), (110, 39507), (117, 39648), (122, 39699),  
(135, 39909), (136, 39915), (137, 39921), (140, 39954), (141, 39996), (143, 40008), (145, 40026),  
(164, 40200), (166, 40209), (167, 40212), (169, 40215), (171, 40227), (175, 40239), (176, 40242),  
(178, 40257), (195, 40344), (197, 40359), (212, 40503), (213, 40515), (233, 40695), (236, 40713),  
(245, 40794), (249, 40830), (251, 40851), (255, 40917),

Gene: Lukilu\_81 Start: 35083, Stop: 37707, Start Num: 6

Candidate Starts for Lukilu\_81:

(Start: 6 @35083 has 151 MA's), (13, 35152), (Start: 14 @35158 has 2 MA's), (19, 35176), (24, 35212),  
(42, 35320), (45, 35332), (56, 35497), (57, 35503), (67, 35698), (70, 35719), (72, 35740), (73, 35749),  
(79, 35806), (81, 35848), (83, 35902), (84, 35947), (91, 36016), (93, 36052), (95, 36079), (97, 36106),  
(101, 36166), (104, 36199), (105, 36202), (109, 36232), (110, 36250), (117, 36391), (122, 36442),  
(135, 36652), (136, 36658), (140, 36697), (141, 36739), (143, 36751), (145, 36769), (164, 36943),  
(166, 36952), (167, 36955), (169, 36958), (171, 36970), (175, 36982), (176, 36985), (178, 37000),  
(195, 37087), (197, 37102), (212, 37246), (213, 37258), (233, 37438), (236, 37456), (245, 37537),  
(249, 37573), (251, 37594), (255, 37660),

Gene: Maby2021\_90 Start: 35924, Stop: 38548, Start Num: 6

Candidate Starts for Maby2021\_90:

(Start: 6 @35924 has 151 MA's), (13, 35993), (Start: 14 @35999 has 2 MA's), (19, 36017), (24, 36053),  
(42, 36161), (45, 36173), (56, 36338), (57, 36344), (67, 36539), (70, 36560), (72, 36581), (73, 36590),  
(79, 36647), (81, 36689), (83, 36743), (84, 36788), (91, 36857), (93, 36893), (95, 36920), (97, 36947),  
(101, 37007), (104, 37040), (105, 37043), (108, 37064), (110, 37091), (113, 37163), (117, 37232),  
(122, 37283), (135, 37493), (136, 37499), (140, 37538), (141, 37580), (143, 37592), (145, 37610),  
(164, 37784), (166, 37793), (167, 37796), (169, 37799), (171, 37811), (175, 37823), (176, 37826),  
(178, 37841), (195, 37928), (197, 37943), (212, 38087), (213, 38099), (233, 38279), (236, 38297),  
(245, 38378), (249, 38414), (251, 38435), (255, 38501),

Gene: Mangeria\_90 Start: 36205, Stop: 38829, Start Num: 6

Candidate Starts for Mangeria\_90:

(Start: 6 @36205 has 151 MA's), (13, 36274), (Start: 14 @36280 has 2 MA's), (19, 36298), (24, 36334),  
(42, 36442), (45, 36454), (56, 36619), (57, 36625), (67, 36820), (70, 36841), (72, 36862), (73, 36871),  
(79, 36928), (81, 36970), (83, 37024), (84, 37069), (91, 37138), (93, 37174), (95, 37201), (97, 37228),  
(101, 37288), (104, 37321), (105, 37324), (109, 37354), (110, 37372), (117, 37513), (122, 37564),  
(135, 37774), (136, 37780), (140, 37819), (141, 37861), (143, 37873), (145, 37891), (164, 38065),  
(167, 38077), (169, 38080), (171, 38092), (175, 38104), (176, 38107), (178, 38122), (195, 38209),  
(197, 38224), (212, 38368), (213, 38380), (233, 38560), (236, 38578), (245, 38659), (249, 38695),  
(251, 38716), (255, 38782),

Gene: McGee\_91 Start: 34432, Stop: 37056, Start Num: 6

Candidate Starts for McGee\_91:

(Start: 6 @34432 has 151 MA's), (13, 34501), (Start: 14 @34507 has 2 MA's), (19, 34525), (24, 34561),  
(42, 34669), (45, 34681), (56, 34846), (57, 34852), (67, 35047), (70, 35068), (72, 35089), (73, 35098),  
(79, 35155), (81, 35197), (83, 35251), (84, 35296), (91, 35365), (93, 35401), (95, 35428), (97, 35455),

(101, 35515), (104, 35548), (105, 35551), (109, 35581), (110, 35599), (117, 35740), (122, 35791), (135, 36001), (136, 36007), (140, 36046), (141, 36088), (143, 36100), (145, 36118), (164, 36292), (166, 36301), (167, 36304), (169, 36307), (171, 36319), (175, 36331), (176, 36334), (178, 36349), (195, 36436), (197, 36451), (212, 36595), (213, 36607), (233, 36787), (236, 36805), (245, 36886), (249, 36922), (251, 36943), (255, 37009),

Gene: McWolfish\_88 Start: 35671, Stop: 38274, Start Num: 6

Candidate Starts for McWolfish\_88:

(Start: 6 @35671 has 151 MA's), (13, 35740), (Start: 14 @35746 has 2 MA's), (19, 35764), (24, 35800), (42, 35908), (45, 35920), (56, 36085), (57, 36091), (67, 36286), (70, 36307), (72, 36328), (73, 36337), (79, 36394), (81, 36436), (83, 36490), (84, 36535), (91, 36604), (93, 36640), (95, 36667), (97, 36694), (101, 36754), (104, 36787), (105, 36790), (108, 36811), (110, 36838), (113, 36910), (117, 36979), (122, 37030), (135, 37240), (136, 37246), (140, 37285), (141, 37327), (143, 37339), (145, 37357), (164, 37531), (166, 37540), (167, 37543), (169, 37546), (171, 37558), (175, 37570), (176, 37573), (178, 37588), (195, 37654), (197, 37669), (212, 37813), (213, 37825), (233, 38005), (236, 38023), (245, 38104), (249, 38140), (251, 38161), (255, 38227),

Gene: Megamind\_89 Start: 35909, Stop: 38533, Start Num: 6

Candidate Starts for Megamind\_89:

(Start: 6 @35909 has 151 MA's), (13, 35978), (Start: 14 @35984 has 2 MA's), (19, 36002), (24, 36038), (42, 36146), (45, 36158), (56, 36323), (57, 36329), (67, 36524), (70, 36545), (72, 36566), (73, 36575), (79, 36632), (81, 36674), (83, 36728), (84, 36773), (91, 36842), (93, 36878), (95, 36905), (97, 36932), (101, 36992), (104, 37025), (105, 37028), (109, 37058), (110, 37076), (117, 37217), (122, 37268), (135, 37478), (136, 37484), (140, 37523), (141, 37565), (143, 37577), (145, 37595), (164, 37769), (166, 37778), (167, 37781), (169, 37784), (171, 37796), (175, 37808), (176, 37811), (178, 37826), (195, 37913), (197, 37928), (212, 38072), (213, 38084), (233, 38264), (236, 38282), (245, 38363), (249, 38399), (251, 38420), (255, 38486),

Gene: Melpomini\_84 Start: 33455, Stop: 36058, Start Num: 6

Candidate Starts for Melpomini\_84:

(Start: 6 @33455 has 151 MA's), (13, 33524), (Start: 14 @33530 has 2 MA's), (19, 33548), (24, 33584), (42, 33692), (45, 33704), (56, 33869), (57, 33875), (67, 34070), (70, 34091), (72, 34112), (73, 34121), (79, 34178), (81, 34220), (83, 34274), (84, 34319), (91, 34388), (93, 34424), (95, 34451), (97, 34478), (101, 34538), (104, 34571), (105, 34574), (108, 34595), (110, 34622), (113, 34694), (117, 34763), (122, 34814), (135, 35024), (136, 35030), (137, 35036), (140, 35069), (141, 35111), (143, 35123), (145, 35141), (164, 35315), (166, 35324), (167, 35327), (169, 35330), (171, 35342), (175, 35354), (176, 35357), (178, 35372), (195, 35438), (197, 35453), (212, 35597), (213, 35609), (233, 35789), (236, 35807), (245, 35888), (249, 35924), (251, 35945), (255, 36011),

Gene: MikeLiesIn\_91 Start: 36256, Stop: 38880, Start Num: 6

Candidate Starts for MikeLiesIn\_91:

(Start: 6 @36256 has 151 MA's), (13, 36325), (Start: 14 @36331 has 2 MA's), (19, 36349), (24, 36385), (42, 36493), (45, 36505), (56, 36670), (57, 36676), (67, 36871), (70, 36892), (72, 36913), (73, 36922), (79, 36979), (81, 37021), (83, 37075), (84, 37120), (91, 37189), (93, 37225), (95, 37252), (97, 37279), (101, 37339), (104, 37372), (105, 37375), (109, 37405), (110, 37423), (117, 37564), (122, 37615), (135, 37825), (136, 37831), (140, 37870), (141, 37912), (143, 37924), (145, 37942), (164, 38116), (166, 38125), (167, 38128), (169, 38131), (171, 38143), (175, 38155), (176, 38158), (178, 38173), (195, 38260), (197, 38275), (212, 38419), (213, 38431), (233, 38611), (236, 38629), (245, 38710), (249, 38746), (251, 38767), (255, 38833),

Gene: Mikro\_88 Start: 37167, Stop: 39791, Start Num: 6

Candidate Starts for Mikro\_88:

(Start: 6 @37167 has 151 MA's), (13, 37236), (Start: 14 @37242 has 2 MA's), (19, 37260), (24, 37296), (42, 37404), (45, 37416), (56, 37581), (57, 37587), (67, 37782), (70, 37803), (72, 37824), (73, 37833), (79, 37890), (81, 37932), (83, 37986), (84, 38031), (91, 38100), (93, 38136), (95, 38163), (97, 38190), (101, 38250), (104, 38283), (105, 38286), (109, 38316), (110, 38334), (117, 38475), (122, 38526), (135, 38736), (136, 38742), (137, 38748), (140, 38781), (141, 38823), (143, 38835), (145, 38853), (164, 39027), (166, 39036), (167, 39039), (169, 39042), (171, 39054), (175, 39066), (176, 39069), (178, 39084), (195, 39171), (197, 39186), (212, 39330), (213, 39342), (233, 39522), (236, 39540), (245, 39621), (249, 39657), (251, 39678), (255, 39744),

Gene: MoMoMixon\_91 Start: 36002, Stop: 38605, Start Num: 6

Candidate Starts for MoMoMixon\_91:

(Start: 6 @36002 has 151 MA's), (13, 36071), (Start: 14 @36077 has 2 MA's), (19, 36095), (24, 36131), (42, 36239), (45, 36251), (56, 36416), (57, 36422), (67, 36617), (70, 36638), (72, 36659), (73, 36668), (79, 36725), (81, 36767), (83, 36821), (84, 36866), (91, 36935), (93, 36971), (95, 36998), (97, 37025), (101, 37085), (104, 37118), (105, 37121), (109, 37151), (110, 37169), (117, 37310), (122, 37361), (135, 37571), (136, 37577), (140, 37616), (141, 37658), (143, 37670), (145, 37688), (164, 37862), (166, 37871), (167, 37874), (169, 37877), (171, 37889), (175, 37901), (176, 37904), (178, 37919), (195, 37985), (197, 38000), (212, 38144), (213, 38156), (233, 38336), (236, 38354), (245, 38435), (249, 38471), (251, 38492), (255, 38558),

Gene: Momo\_89 Start: 35248, Stop: 37872, Start Num: 6

Candidate Starts for Momo\_89:

(Start: 6 @35248 has 151 MA's), (13, 35317), (Start: 14 @35323 has 2 MA's), (19, 35341), (24, 35377), (42, 35485), (45, 35497), (56, 35662), (57, 35668), (67, 35863), (70, 35884), (72, 35905), (73, 35914), (79, 35971), (81, 36013), (83, 36067), (84, 36112), (91, 36181), (93, 36217), (95, 36244), (97, 36271), (101, 36331), (104, 36364), (105, 36367), (109, 36397), (110, 36415), (117, 36556), (122, 36607), (135, 36817), (136, 36823), (140, 36862), (141, 36904), (143, 36916), (145, 36934), (164, 37108), (166, 37117), (167, 37120), (169, 37123), (171, 37135), (175, 37147), (176, 37150), (178, 37165), (195, 37252), (197, 37267), (212, 37411), (213, 37423), (233, 37603), (236, 37621), (245, 37702), (249, 37738), (251, 37759), (255, 37825),

Gene: Morizzled23\_90 Start: 34975, Stop: 37578, Start Num: 6

Candidate Starts for Morizzled23\_90:

(Start: 6 @34975 has 151 MA's), (13, 35044), (Start: 14 @35050 has 2 MA's), (19, 35068), (24, 35104), (42, 35212), (45, 35224), (56, 35389), (57, 35395), (67, 35590), (70, 35611), (72, 35632), (73, 35641), (79, 35698), (81, 35740), (83, 35794), (84, 35839), (91, 35908), (93, 35944), (95, 35971), (97, 35998), (101, 36058), (104, 36091), (105, 36094), (108, 36115), (110, 36142), (113, 36214), (117, 36283), (122, 36334), (135, 36544), (136, 36550), (137, 36556), (140, 36589), (141, 36631), (143, 36643), (145, 36661), (164, 36835), (166, 36844), (167, 36847), (169, 36850), (171, 36862), (175, 36874), (176, 36877), (178, 36892), (195, 36958), (197, 36973), (212, 37117), (213, 37129), (233, 37309), (236, 37327), (245, 37408), (249, 37444), (251, 37465), (255, 37531),

Gene: Myrna\_89 Start: 37944, Stop: 40463, Start Num: 14

Candidate Starts for Myrna\_89:

(Start: 14 @37944 has 2 MA's), (17, 37947), (25, 38004), (29, 38040), (32, 38049), (34, 38070), (37, 38088), (39, 38097), (42, 38118), (45, 38130), (46, 38139), (54, 38256), (57, 38301), (59, 38349), (67, 38496), (70, 38517), (72, 38538), (73, 38547), (74, 38559), (75, 38562), (77, 38586), (84, 38745), (91, 38814), (93, 38850), (105, 39000), (109, 39030), (110, 39048), (116, 39186), (117, 39189), (118, 39192), (124, 39288), (125, 39294), (130, 39357), (132, 39381), (135, 39450), (136, 39456), (137, 39462), (139, 39477), (140, 39495), (143, 39549), (145, 39567), (162, 39729), (164, 39741), (167, 39753), (175, 39780), (178, 39798), (180, 39804), (192, 39864), (194, 39894), (211, 40056), (213, 40080), (232, 40218), (235, 40233), (239, 40260), (243, 40284), (257, 40437),

Gene: Naija\_89 Start: 35248, Stop: 37872, Start Num: 6

Candidate Starts for Naija\_89:

(Start: 6 @35248 has 151 MA's), (13, 35317), (Start: 14 @35323 has 2 MA's), (19, 35341), (24, 35377), (42, 35485), (45, 35497), (56, 35662), (57, 35668), (67, 35863), (70, 35884), (72, 35905), (73, 35914), (79, 35971), (81, 36013), (83, 36067), (84, 36112), (91, 36181), (93, 36217), (95, 36244), (97, 36271), (101, 36331), (104, 36364), (105, 36367), (109, 36397), (110, 36415), (117, 36556), (122, 36607), (135, 36817), (136, 36823), (140, 36862), (141, 36904), (143, 36916), (145, 36934), (164, 37108), (166, 37117), (167, 37120), (169, 37123), (171, 37135), (175, 37147), (176, 37150), (178, 37165), (195, 37252), (197, 37267), (212, 37411), (213, 37423), (233, 37603), (236, 37621), (245, 37702), (249, 37738), (251, 37759), (255, 37825),

Gene: Napoleon13\_86 Start: 34051, Stop: 36675, Start Num: 6

Candidate Starts for Napoleon13\_86:

(Start: 6 @34051 has 151 MA's), (13, 34120), (Start: 14 @34126 has 2 MA's), (19, 34144), (24, 34180), (42, 34288), (45, 34300), (56, 34465), (57, 34471), (67, 34666), (70, 34687), (72, 34708), (73, 34717), (79, 34774), (81, 34816), (83, 34870), (84, 34915), (91, 34984), (93, 35020), (95, 35047), (97, 35074), (101, 35134), (104, 35167), (105, 35170), (108, 35191), (110, 35218), (113, 35290), (117, 35359), (122, 35410), (135, 35620), (136, 35626), (140, 35665), (141, 35707), (143, 35719), (145, 35737), (164, 35911), (166, 35920), (167, 35923), (169, 35926), (171, 35938), (175, 35950), (176, 35953), (178, 35968), (195, 36055), (197, 36070), (212, 36214), (213, 36226), (233, 36406), (236, 36424), (245, 36505), (249, 36541), (251, 36562), (255, 36628),

Gene: Nappy\_92 Start: 36807, Stop: 39431, Start Num: 6

Candidate Starts for Nappy\_92:

(Start: 6 @36807 has 151 MA's), (13, 36876), (Start: 14 @36882 has 2 MA's), (19, 36900), (24, 36936), (42, 37044), (45, 37056), (56, 37221), (57, 37227), (67, 37422), (70, 37443), (72, 37464), (73, 37473), (79, 37530), (81, 37572), (83, 37626), (84, 37671), (91, 37740), (93, 37776), (95, 37803), (97, 37830), (101, 37890), (104, 37923), (105, 37926), (109, 37956), (110, 37974), (117, 38115), (122, 38166), (135, 38376), (136, 38382), (137, 38388), (140, 38421), (141, 38463), (143, 38475), (145, 38493), (164, 38667), (166, 38676), (167, 38679), (169, 38682), (171, 38694), (175, 38706), (176, 38709), (178, 38724), (195, 38811), (197, 38826), (212, 38970), (213, 38982), (233, 39162), (236, 39180), (245, 39261), (249, 39297), (251, 39318), (255, 39384),

Gene: Naval22\_95 Start: 37847, Stop: 40471, Start Num: 6

Candidate Starts for Naval22\_95:

(Start: 6 @37847 has 151 MA's), (13, 37916), (Start: 14 @37922 has 2 MA's), (19, 37940), (24, 37976), (42, 38084), (45, 38096), (56, 38261), (57, 38267), (67, 38462), (70, 38483), (72, 38504), (73, 38513), (79, 38570), (81, 38612), (83, 38666), (84, 38711), (91, 38780), (93, 38816), (95, 38843), (97, 38870), (101, 38930), (104, 38963), (105, 38966), (109, 38996), (110, 39014), (117, 39155), (122, 39206), (135, 39416), (136, 39422), (140, 39461), (141, 39503), (143, 39515), (145, 39533), (164, 39707), (166, 39716), (167, 39719), (169, 39722), (171, 39734), (175, 39746), (176, 39749), (178, 39764), (195, 39851), (197, 39866), (212, 40010), (213, 40022), (233, 40202), (236, 40220), (245, 40301), (249, 40337), (251, 40358), (255, 40424),

Gene: NedWong\_91 Start: 36243, Stop: 38867, Start Num: 6

Candidate Starts for NedWong\_91:

(Start: 6 @36243 has 151 MA's), (13, 36312), (Start: 14 @36318 has 2 MA's), (19, 36336), (24, 36372), (42, 36480), (45, 36492), (56, 36657), (57, 36663), (67, 36858), (70, 36879), (72, 36900), (73, 36909), (79, 36966), (81, 37008), (83, 37062), (84, 37107), (91, 37176), (93, 37212), (95, 37239), (97, 37266), (101, 37326), (104, 37359), (105, 37362), (109, 37392), (110, 37410), (117, 37551), (122, 37602), (135, 37812), (136, 37818), (140, 37857), (141, 37899), (143, 37911), (145, 37929), (164, 38103), (166, 38112), (167, 38115), (169, 38118), (171, 38130), (175, 38142), (176, 38145), (178, 38160), (195, 38247), (197, 38262), (212, 38406), (213, 38418), (233, 38598), (236, 38616), (245, 38697),

(249, 38733), (251, 38754), (255, 38820),

Gene: Ngannou\_86 Start: 34230, Stop: 36854, Start Num: 6

Candidate Starts for Ngannou\_86:

(Start: 6 @34230 has 151 MA's), (13, 34299), (Start: 14 @34305 has 2 MA's), (19, 34323), (24, 34359), (42, 34467), (45, 34479), (56, 34644), (57, 34650), (67, 34845), (70, 34866), (72, 34887), (73, 34896), (79, 34953), (81, 34995), (83, 35049), (84, 35094), (91, 35163), (93, 35199), (95, 35226), (97, 35253), (101, 35313), (104, 35346), (105, 35349), (109, 35379), (110, 35397), (117, 35538), (122, 35589), (135, 35799), (136, 35805), (140, 35844), (141, 35886), (143, 35898), (145, 35916), (164, 36090), (166, 36099), (167, 36102), (169, 36105), (171, 36117), (175, 36129), (176, 36132), (178, 36147), (195, 36234), (197, 36249), (212, 36393), (213, 36405), (233, 36585), (236, 36603), (245, 36684), (249, 36720), (251, 36741), (255, 36807),

Gene: Nidhogg\_91 Start: 36097, Stop: 38721, Start Num: 6

Candidate Starts for Nidhogg\_91:

(Start: 6 @36097 has 151 MA's), (13, 36166), (Start: 14 @36172 has 2 MA's), (19, 36190), (24, 36226), (42, 36334), (45, 36346), (56, 36511), (57, 36517), (67, 36712), (70, 36733), (72, 36754), (73, 36763), (79, 36820), (81, 36862), (83, 36916), (84, 36961), (91, 37030), (93, 37066), (95, 37093), (97, 37120), (101, 37180), (104, 37213), (105, 37216), (108, 37237), (110, 37264), (113, 37336), (117, 37405), (122, 37456), (135, 37666), (136, 37672), (140, 37711), (141, 37753), (143, 37765), (145, 37783), (164, 37957), (166, 37966), (167, 37969), (169, 37972), (171, 37984), (175, 37996), (176, 37999), (178, 38014), (195, 38101), (197, 38116), (212, 38260), (213, 38272), (233, 38452), (236, 38470), (245, 38551), (249, 38587), (251, 38608), (255, 38674),

Gene: NoodleTree\_98 Start: 37274, Stop: 39898, Start Num: 6

Candidate Starts for NoodleTree\_98:

(Start: 6 @37274 has 151 MA's), (13, 37343), (Start: 14 @37349 has 2 MA's), (19, 37367), (24, 37403), (42, 37511), (45, 37523), (56, 37688), (57, 37694), (67, 37889), (70, 37910), (72, 37931), (73, 37940), (79, 37997), (81, 38039), (83, 38093), (84, 38138), (91, 38207), (93, 38243), (95, 38270), (97, 38297), (101, 38357), (104, 38390), (105, 38393), (109, 38423), (110, 38441), (117, 38582), (122, 38633), (135, 38843), (136, 38849), (137, 38855), (140, 38888), (141, 38930), (143, 38942), (145, 38960), (164, 39134), (166, 39143), (167, 39146), (169, 39149), (171, 39161), (175, 39173), (176, 39176), (178, 39191), (195, 39278), (197, 39293), (212, 39437), (213, 39449), (233, 39629), (236, 39647), (245, 39728), (249, 39764), (251, 39785), (255, 39851),

Gene: Norm\_91 Start: 36245, Stop: 38869, Start Num: 6

Candidate Starts for Norm\_91:

(Start: 6 @36245 has 151 MA's), (13, 36314), (Start: 14 @36320 has 2 MA's), (19, 36338), (24, 36374), (42, 36482), (45, 36494), (56, 36659), (57, 36665), (67, 36860), (70, 36881), (72, 36902), (73, 36911), (79, 36968), (81, 37010), (83, 37064), (84, 37109), (91, 37178), (93, 37214), (95, 37241), (97, 37268), (101, 37328), (104, 37361), (105, 37364), (109, 37394), (110, 37412), (117, 37553), (122, 37604), (135, 37814), (136, 37820), (140, 37859), (141, 37901), (143, 37913), (145, 37931), (164, 38105), (166, 38114), (167, 38117), (169, 38120), (171, 38132), (175, 38144), (176, 38147), (178, 38162), (195, 38249), (197, 38264), (212, 38408), (213, 38420), (233, 38600), (236, 38618), (245, 38699), (249, 38735), (251, 38756), (255, 38822),

Gene: NuevoMundo\_96 Start: 38204, Stop: 40828, Start Num: 6

Candidate Starts for NuevoMundo\_96:

(Start: 6 @38204 has 151 MA's), (13, 38273), (Start: 14 @38279 has 2 MA's), (19, 38297), (24, 38333), (42, 38441), (45, 38453), (56, 38618), (57, 38624), (67, 38819), (70, 38840), (72, 38861), (73, 38870), (79, 38927), (81, 38969), (83, 39023), (84, 39068), (91, 39137), (93, 39173), (95, 39200), (97, 39227), (101, 39287), (104, 39320), (105, 39323), (109, 39353), (110, 39371), (117, 39512), (122, 39563), (135, 39773), (136, 39779), (137, 39785), (140, 39818), (141, 39860), (143, 39872), (145, 39890),

(164, 40064), (166, 40073), (167, 40076), (169, 40079), (171, 40091), (175, 40103), (176, 40106), (178, 40121), (195, 40208), (197, 40223), (212, 40367), (213, 40379), (233, 40559), (236, 40577), (245, 40658), (249, 40694), (251, 40715), (255, 40781),

Gene: ParkTD\_91 Start: 36239, Stop: 38863, Start Num: 6

Candidate Starts for ParkTD\_91:

(Start: 6 @36239 has 151 MA's), (13, 36308), (Start: 14 @36314 has 2 MA's), (19, 36332), (24, 36368), (42, 36476), (45, 36488), (56, 36653), (57, 36659), (67, 36854), (70, 36875), (72, 36896), (73, 36905), (79, 36962), (81, 37004), (83, 37058), (84, 37103), (91, 37172), (93, 37208), (95, 37235), (97, 37262), (101, 37322), (104, 37355), (105, 37358), (109, 37388), (110, 37406), (117, 37547), (122, 37598), (135, 37808), (136, 37814), (140, 37853), (141, 37895), (143, 37907), (145, 37925), (164, 38099), (166, 38108), (167, 38111), (169, 38114), (171, 38126), (175, 38138), (176, 38141), (178, 38156), (195, 38243), (197, 38258), (212, 38402), (213, 38414), (233, 38594), (236, 38612), (245, 38693), (249, 38729), (251, 38750), (255, 38816),

Gene: Patter\_90 Start: 35265, Stop: 37889, Start Num: 6

Candidate Starts for Patter\_90:

(Start: 6 @35265 has 151 MA's), (13, 35334), (Start: 14 @35340 has 2 MA's), (19, 35358), (24, 35394), (42, 35502), (45, 35514), (56, 35679), (57, 35685), (67, 35880), (70, 35901), (72, 35922), (73, 35931), (79, 35988), (81, 36030), (83, 36084), (84, 36129), (91, 36198), (93, 36234), (95, 36261), (97, 36288), (101, 36348), (104, 36381), (105, 36384), (109, 36414), (110, 36432), (117, 36573), (122, 36624), (135, 36834), (136, 36840), (140, 36879), (141, 36921), (143, 36933), (145, 36951), (164, 37125), (166, 37134), (167, 37137), (169, 37140), (171, 37152), (175, 37164), (176, 37167), (178, 37182), (195, 37269), (197, 37284), (212, 37428), (213, 37440), (233, 37620), (236, 37638), (245, 37719), (249, 37755), (251, 37776), (255, 37842),

Gene: Phabba\_94 Start: 37026, Stop: 39536, Start Num: 14

Candidate Starts for Phabba\_94:

(Start: 14 @37026 has 2 MA's), (17, 37032), (22, 37071), (25, 37089), (32, 37134), (34, 37155), (37, 37173), (39, 37182), (42, 37203), (45, 37215), (46, 37224), (54, 37341), (57, 37386), (59, 37434), (67, 37581), (70, 37602), (72, 37623), (73, 37632), (74, 37644), (75, 37647), (77, 37671), (91, 37899), (93, 37935), (105, 38085), (109, 38115), (110, 38133), (116, 38271), (117, 38274), (118, 38277), (124, 38373), (125, 38379), (130, 38442), (131, 38457), (135, 38535), (136, 38541), (137, 38547), (139, 38562), (140, 38580), (143, 38634), (145, 38652), (157, 38781), (162, 38814), (164, 38826), (167, 38838), (175, 38865), (178, 38883), (232, 39291), (239, 39333), (253, 39477), (257, 39510),

Gene: Phlegm\_92 Start: 35248, Stop: 37872, Start Num: 6

Candidate Starts for Phlegm\_92:

(Start: 6 @35248 has 151 MA's), (13, 35317), (Start: 14 @35323 has 2 MA's), (19, 35341), (24, 35377), (42, 35485), (45, 35497), (56, 35662), (57, 35668), (67, 35863), (70, 35884), (72, 35905), (73, 35914), (79, 35971), (81, 36013), (83, 36067), (84, 36112), (91, 36181), (93, 36217), (95, 36244), (97, 36271), (101, 36331), (104, 36364), (105, 36367), (109, 36397), (110, 36415), (117, 36556), (122, 36607), (135, 36817), (136, 36823), (140, 36862), (141, 36904), (143, 36916), (145, 36934), (164, 37108), (166, 37117), (167, 37120), (169, 37123), (171, 37135), (175, 37147), (176, 37150), (178, 37165), (195, 37252), (197, 37267), (212, 37411), (213, 37423), (233, 37603), (236, 37621), (245, 37702), (249, 37738), (251, 37759), (255, 37825),

Gene: Phox\_87 Start: 36133, Stop: 38736, Start Num: 6

Candidate Starts for Phox\_87:

(Start: 6 @36133 has 151 MA's), (13, 36202), (Start: 14 @36208 has 2 MA's), (19, 36226), (24, 36262), (42, 36370), (45, 36382), (56, 36547), (57, 36553), (67, 36748), (70, 36769), (72, 36790), (73, 36799), (79, 36856), (81, 36898), (83, 36952), (84, 36997), (91, 37066), (93, 37102), (95, 37129), (97, 37156), (101, 37216), (104, 37249), (105, 37252), (108, 37273), (110, 37300), (113, 37372), (117, 37441),



(122, 37492), (135, 37702), (136, 37708), (137, 37714), (140, 37747), (141, 37789), (143, 37801), (145, 37819), (164, 37993), (166, 38002), (167, 38005), (169, 38008), (171, 38020), (175, 38032), (176, 38035), (178, 38050), (195, 38116), (197, 38131), (212, 38275), (213, 38287), (233, 38467), (236, 38485), (245, 38566), (249, 38602), (251, 38623), (255, 38689),

Gene: Phrappuccino\_46 Start: 26549, Stop: 28942, Start Num: 4

Candidate Starts for Phrappuccino\_46:

(Start: 4 @26549 has 2 MA's), (12, 26636), (13, 26660), (18, 26681), (21, 26708), (23, 26717), (28, 26759), (31, 26771), (33, 26786), (45, 26828), (46, 26837), (49, 26873), (52, 26918), (53, 26930), (54, 26954), (59, 27047), (69, 27200), (72, 27233), (73, 27242), (74, 27254), (89, 27473), (92, 27497), (93, 27530), (96, 27560), (97, 27584), (98, 27614), (101, 27644), (103, 27659), (106, 27689), (110, 27728), (111, 27764), (112, 27773), (114, 27860), (117, 27875), (127, 27998), (130, 28043), (137, 28148), (139, 28163), (141, 28223), (142, 28232), (144, 28250), (145, 28253), (147, 28268), (151, 28313), (153, 28331), (156, 28358), (158, 28388), (167, 28409), (169, 28412), (178, 28433), (204, 28457), (205, 28466), (208, 28475), (213, 28511), (217, 28535), (219, 28568), (220, 28580), (237, 28718), (239, 28733), (248, 28796), (249, 28805), (255, 28892), (258, 28928),

Gene: Phusco\_90 Start: 36013, Stop: 38637, Start Num: 6

Candidate Starts for Phusco\_90:

(Start: 6 @36013 has 151 MA's), (13, 36082), (Start: 14 @36088 has 2 MA's), (19, 36106), (24, 36142), (42, 36250), (45, 36262), (56, 36427), (57, 36433), (67, 36628), (70, 36649), (72, 36670), (73, 36679), (79, 36736), (81, 36778), (83, 36832), (84, 36877), (91, 36946), (93, 36982), (95, 37009), (97, 37036), (101, 37096), (104, 37129), (105, 37132), (109, 37162), (110, 37180), (117, 37321), (122, 37372), (135, 37582), (136, 37588), (140, 37627), (141, 37669), (143, 37681), (145, 37699), (164, 37873), (166, 37882), (167, 37885), (169, 37888), (171, 37900), (175, 37912), (176, 37915), (178, 37930), (195, 38017), (197, 38032), (212, 38176), (213, 38188), (233, 38368), (236, 38386), (245, 38467), (249, 38503), (251, 38524), (255, 38590),

Gene: Pinkcreek\_81 Start: 33219, Stop: 35822, Start Num: 6

Candidate Starts for Pinkcreek\_81:

(Start: 6 @33219 has 151 MA's), (13, 33288), (Start: 14 @33294 has 2 MA's), (19, 33312), (24, 33348), (42, 33456), (45, 33468), (54, 33594), (57, 33639), (67, 33834), (70, 33855), (72, 33876), (73, 33885), (79, 33942), (81, 33984), (83, 34038), (84, 34083), (91, 34152), (93, 34188), (95, 34215), (97, 34242), (101, 34302), (104, 34335), (105, 34338), (108, 34359), (110, 34386), (113, 34458), (117, 34527), (122, 34578), (135, 34788), (136, 34794), (137, 34800), (140, 34833), (141, 34875), (143, 34887), (145, 34905), (164, 35079), (166, 35088), (167, 35091), (169, 35094), (171, 35106), (175, 35118), (176, 35121), (178, 35136), (195, 35202), (197, 35217), (212, 35361), (213, 35373), (233, 35553), (236, 35571), (245, 35652), (249, 35688), (251, 35709), (255, 35775),

Gene: Pivoine\_89 Start: 35248, Stop: 37872, Start Num: 6

Candidate Starts for Pivoine\_89:

(Start: 6 @35248 has 151 MA's), (13, 35317), (Start: 14 @35323 has 2 MA's), (19, 35341), (24, 35377), (42, 35485), (45, 35497), (56, 35662), (57, 35668), (67, 35863), (70, 35884), (72, 35905), (73, 35914), (79, 35971), (81, 36013), (83, 36067), (84, 36112), (91, 36181), (93, 36217), (95, 36244), (97, 36271), (101, 36331), (104, 36364), (105, 36367), (109, 36397), (110, 36415), (117, 36556), (122, 36607), (135, 36817), (136, 36823), (140, 36862), (141, 36904), (143, 36916), (145, 36934), (164, 37108), (166, 37117), (167, 37120), (169, 37123), (171, 37135), (175, 37147), (176, 37150), (178, 37165), (195, 37252), (197, 37267), (212, 37411), (213, 37423), (233, 37603), (236, 37621), (245, 37702), (249, 37738), (251, 37759), (255, 37825),

Gene: Pleione\_93 Start: 36242, Stop: 38866, Start Num: 6

Candidate Starts for Pleione\_93:

(Start: 6 @36242 has 151 MA's), (13, 36311), (Start: 14 @36317 has 2 MA's), (19, 36335), (24, 36371), (42, 36479), (45, 36491), (56, 36656), (57, 36662), (67, 36857), (70, 36878), (72, 36899), (73, 36908), (79, 36965), (81, 37007), (83, 37061), (84, 37106), (91, 37175), (93, 37211), (95, 37238), (97, 37265), (101, 37325), (104, 37358), (105, 37361), (109, 37391), (110, 37409), (117, 37550), (122, 37601), (135, 37811), (136, 37817), (140, 37856), (141, 37898), (143, 37910), (145, 37928), (164, 38102), (166, 38111), (167, 38114), (169, 38117), (171, 38129), (175, 38141), (176, 38144), (178, 38159), (195, 38246), (197, 38261), (212, 38405), (213, 38417), (233, 38597), (236, 38615), (245, 38696), (249, 38732), (251, 38753), (255, 38819),

Gene: Primadonna\_84 Start: 35134, Stop: 37758, Start Num: 6

Candidate Starts for Primadonna\_84:

(Start: 6 @35134 has 151 MA's), (13, 35203), (Start: 14 @35209 has 2 MA's), (19, 35227), (24, 35263), (42, 35371), (45, 35383), (56, 35548), (57, 35554), (67, 35749), (70, 35770), (72, 35791), (73, 35800), (79, 35857), (81, 35899), (83, 35953), (84, 35998), (91, 36067), (93, 36103), (95, 36130), (97, 36157), (101, 36217), (102, 36229), (104, 36250), (105, 36253), (109, 36283), (110, 36301), (117, 36442), (122, 36493), (135, 36703), (136, 36709), (137, 36715), (140, 36748), (141, 36790), (143, 36802), (145, 36820), (164, 36994), (166, 37003), (167, 37006), (169, 37009), (171, 37021), (175, 37033), (176, 37036), (178, 37051), (195, 37138), (197, 37153), (212, 37297), (213, 37309), (233, 37489), (236, 37507), (245, 37588), (249, 37624), (251, 37645), (255, 37711),

Gene: Pupper\_88 Start: 36748, Stop: 39342, Start Num: 9

Candidate Starts for Pupper\_88:

(Start: 6 @36730 has 151 MA's), (Start: 9 @36748 has 1 MA's), (21, 36847), (27, 36886), (42, 36949), (45, 36961), (48, 36991), (59, 37180), (61, 37207), (67, 37327), (69, 37336), (70, 37348), (71, 37354), (72, 37369), (73, 37378), (74, 37390), (76, 37402), (82, 37516), (84, 37576), (87, 37603), (90, 37642), (91, 37645), (93, 37681), (94, 37705), (101, 37795), (110, 37879), (112, 37924), (115, 38008), (116, 38017), (117, 38020), (122, 38071), (123, 38074), (135, 38281), (136, 38287), (141, 38368), (142, 38377), (143, 38380), (145, 38398), (148, 38416), (152, 38467), (155, 38509), (160, 38551), (163, 38566), (167, 38575), (174, 38593), (175, 38596), (177, 38608), (182, 38620), (184, 38635), (185, 38638), (191, 38668), (202, 38764), (210, 38842), (216, 38887), (219, 38926), (230, 39028), (237, 39103), (240, 39127), (241, 39130), (249, 39202), (255, 39295), (256, 39304), (257, 39316),

Gene: PurduePete\_90 Start: 36287, Stop: 38911, Start Num: 6

Candidate Starts for PurduePete\_90:

(Start: 6 @36287 has 151 MA's), (13, 36356), (Start: 14 @36362 has 2 MA's), (19, 36380), (24, 36416), (42, 36524), (45, 36536), (56, 36701), (57, 36707), (67, 36902), (70, 36923), (72, 36944), (73, 36953), (79, 37010), (81, 37052), (83, 37106), (84, 37151), (91, 37220), (93, 37256), (95, 37283), (97, 37310), (101, 37370), (104, 37403), (105, 37406), (108, 37427), (110, 37454), (113, 37526), (117, 37595), (122, 37646), (135, 37856), (136, 37862), (140, 37901), (141, 37943), (143, 37955), (145, 37973), (164, 38147), (166, 38156), (167, 38159), (169, 38162), (171, 38174), (175, 38186), (176, 38189), (178, 38204), (195, 38291), (197, 38306), (212, 38450), (213, 38462), (233, 38642), (236, 38660), (245, 38741), (249, 38777), (251, 38798), (255, 38864),

Gene: QBert\_84 Start: 35743, Stop: 38367, Start Num: 6

Candidate Starts for QBert\_84:

(Start: 6 @35743 has 151 MA's), (13, 35812), (Start: 14 @35818 has 2 MA's), (19, 35836), (24, 35872), (42, 35980), (45, 35992), (56, 36157), (57, 36163), (67, 36358), (70, 36379), (72, 36400), (73, 36409), (79, 36466), (81, 36508), (83, 36562), (84, 36607), (91, 36676), (93, 36712), (95, 36739), (97, 36766), (101, 36826), (104, 36859), (105, 36862), (109, 36892), (110, 36910), (117, 37051), (122, 37102), (135, 37312), (136, 37318), (140, 37357), (141, 37399), (143, 37411), (145, 37429), (164, 37603), (166, 37612), (167, 37615), (169, 37618), (171, 37630), (175, 37642), (176, 37645), (178, 37660), (195, 37747), (197, 37762), (212, 37906), (213, 37918), (233, 38098), (236, 38116), (245, 38197), (249, 38233), (251, 38254), (255, 38320),

Gene: Quasimodo\_90 Start: 35799, Stop: 38402, Start Num: 6

Candidate Starts for Quasimodo\_90:

(Start: 6 @35799 has 151 MA's), (13, 35868), (Start: 14 @35874 has 2 MA's), (19, 35892), (24, 35928), (42, 36036), (45, 36048), (56, 36213), (57, 36219), (67, 36414), (70, 36435), (72, 36456), (73, 36465), (79, 36522), (81, 36564), (83, 36618), (84, 36663), (91, 36732), (93, 36768), (95, 36795), (97, 36822), (101, 36882), (104, 36915), (105, 36918), (108, 36939), (110, 36966), (113, 37038), (117, 37107), (122, 37158), (135, 37368), (136, 37374), (137, 37380), (140, 37413), (141, 37455), (143, 37467), (145, 37485), (164, 37659), (166, 37668), (167, 37671), (169, 37674), (171, 37686), (175, 37698), (176, 37701), (178, 37716), (195, 37782), (197, 37797), (212, 37941), (213, 37953), (233, 38133), (236, 38151), (245, 38232), (249, 38268), (251, 38289), (255, 38355),

Gene: Rabinovish\_87 Start: 36106, Stop: 38709, Start Num: 6

Candidate Starts for Rabinovish\_87:

(Start: 6 @36106 has 151 MA's), (13, 36175), (Start: 14 @36181 has 2 MA's), (19, 36199), (24, 36235), (42, 36343), (45, 36355), (56, 36520), (57, 36526), (67, 36721), (70, 36742), (72, 36763), (73, 36772), (79, 36829), (81, 36871), (83, 36925), (84, 36970), (91, 37039), (93, 37075), (95, 37102), (97, 37129), (101, 37189), (104, 37222), (105, 37225), (108, 37246), (110, 37273), (113, 37345), (117, 37414), (122, 37465), (135, 37675), (136, 37681), (137, 37687), (140, 37720), (141, 37762), (143, 37774), (145, 37792), (164, 37966), (166, 37975), (167, 37978), (169, 37981), (171, 37993), (175, 38005), (176, 38008), (178, 38023), (195, 38089), (197, 38104), (212, 38248), (213, 38260), (233, 38440), (236, 38458), (245, 38539), (249, 38575), (251, 38596), (255, 38662),

Gene: RedWattleHog\_11 Start: 9594, Stop: 12170, Start Num: 10

Candidate Starts for RedWattleHog\_11:

(8, 9585), (Start: 10 @9594 has 3 MA's), (26, 9702), (36, 9765), (40, 9783), (44, 9810), (46, 9825), (47, 9837), (57, 9987), (59, 10035), (60, 10041), (66, 10143), (70, 10197), (72, 10218), (74, 10239), (80, 10302), (85, 10416), (86, 10425), (91, 10482), (92, 10485), (93, 10518), (100, 10629), (101, 10632), (104, 10665), (109, 10698), (110, 10716), (112, 10761), (116, 10854), (117, 10857), (119, 10878), (120, 10890), (126, 10971), (128, 10983), (136, 11124), (145, 11235), (181, 11451), (225, 11775), (235, 11889), (237, 11910), (249, 12024), (250, 12036), (252, 12045), (254, 12111), (255, 12120),

Gene: Rizal\_88 Start: 35160, Stop: 37784, Start Num: 6

Candidate Starts for Rizal\_88:

(Start: 6 @35160 has 151 MA's), (13, 35229), (Start: 14 @35235 has 2 MA's), (19, 35253), (24, 35289), (42, 35397), (45, 35409), (56, 35574), (57, 35580), (67, 35775), (70, 35796), (72, 35817), (73, 35826), (79, 35883), (81, 35925), (83, 35979), (84, 36024), (91, 36093), (93, 36129), (95, 36156), (97, 36183), (101, 36243), (104, 36276), (105, 36279), (108, 36300), (110, 36327), (113, 36399), (117, 36468), (122, 36519), (135, 36729), (136, 36735), (140, 36774), (141, 36816), (143, 36828), (145, 36846), (164, 37020), (166, 37029), (167, 37032), (169, 37035), (171, 37047), (175, 37059), (176, 37062), (178, 37077), (195, 37164), (197, 37179), (212, 37323), (213, 37335), (233, 37515), (236, 37533), (245, 37614), (249, 37650), (251, 37671), (255, 37737),

Gene: RoMag\_85 Start: 35602, Stop: 38226, Start Num: 6

Candidate Starts for RoMag\_85:

(Start: 6 @35602 has 151 MA's), (13, 35671), (Start: 14 @35677 has 2 MA's), (19, 35695), (24, 35731), (42, 35839), (45, 35851), (56, 36016), (57, 36022), (67, 36217), (70, 36238), (72, 36259), (73, 36268), (79, 36325), (81, 36367), (83, 36421), (84, 36466), (91, 36535), (93, 36571), (95, 36598), (97, 36625), (101, 36685), (104, 36718), (105, 36721), (109, 36751), (110, 36769), (117, 36910), (122, 36961), (135, 37171), (136, 37177), (137, 37183), (140, 37216), (141, 37258), (143, 37270), (145, 37288), (164, 37462), (166, 37471), (167, 37474), (169, 37477), (171, 37489), (175, 37501), (176, 37504), (178, 37519), (195, 37606), (197, 37621), (212, 37765), (213, 37777), (233, 37957), (236, 37975), (245, 38056), (249, 38092), (251, 38113), (255, 38179),

Gene: Ronan\_83 Start: 33049, Stop: 35673, Start Num: 6

Candidate Starts for Ronan\_83:

(Start: 6 @33049 has 151 MA's), (13, 33118), (Start: 14 @33124 has 2 MA's), (19, 33142), (24, 33178), (42, 33286), (45, 33298), (56, 33463), (57, 33469), (67, 33664), (70, 33685), (72, 33706), (73, 33715), (79, 33772), (81, 33814), (83, 33868), (84, 33913), (91, 33982), (93, 34018), (95, 34045), (97, 34072), (101, 34132), (104, 34165), (105, 34168), (109, 34198), (110, 34216), (117, 34357), (122, 34408), (135, 34618), (136, 34624), (140, 34663), (141, 34705), (143, 34717), (145, 34735), (164, 34909), (166, 34918), (167, 34921), (169, 34924), (171, 34936), (175, 34948), (176, 34951), (178, 34966), (195, 35053), (197, 35068), (212, 35212), (213, 35224), (233, 35404), (236, 35422), (245, 35503), (249, 35539), (251, 35560), (255, 35626),

Gene: Roots515\_89 Start: 35665, Stop: 38289, Start Num: 6

Candidate Starts for Roots515\_89:

(Start: 6 @35665 has 151 MA's), (13, 35734), (Start: 14 @35740 has 2 MA's), (19, 35758), (24, 35794), (42, 35902), (45, 35914), (56, 36079), (57, 36085), (67, 36280), (70, 36301), (72, 36322), (73, 36331), (79, 36388), (81, 36430), (83, 36484), (84, 36529), (91, 36598), (93, 36634), (95, 36661), (97, 36688), (101, 36748), (104, 36781), (105, 36784), (109, 36814), (110, 36832), (117, 36973), (122, 37024), (135, 37234), (136, 37240), (140, 37279), (141, 37321), (143, 37333), (145, 37351), (164, 37525), (166, 37534), (167, 37537), (169, 37540), (171, 37552), (175, 37564), (176, 37567), (178, 37582), (195, 37669), (197, 37684), (212, 37828), (213, 37840), (233, 38020), (236, 38038), (245, 38119), (249, 38155), (251, 38176), (255, 38242),

Gene: SCentae\_87 Start: 36876, Stop: 39488, Start Num: 6

Candidate Starts for SCentae\_87:

(1, 36738), (2, 36747), (Start: 6 @36876 has 151 MA's), (Start: 9 @36894 has 1 MA's), (21, 36993), (27, 37032), (42, 37095), (45, 37107), (48, 37137), (59, 37326), (61, 37353), (67, 37473), (69, 37482), (70, 37494), (71, 37500), (72, 37515), (73, 37524), (74, 37536), (76, 37548), (82, 37662), (84, 37722), (87, 37749), (90, 37788), (91, 37791), (93, 37827), (94, 37851), (101, 37941), (110, 38025), (112, 38070), (115, 38154), (116, 38163), (117, 38166), (122, 38217), (123, 38220), (135, 38427), (136, 38433), (141, 38514), (142, 38523), (143, 38526), (145, 38544), (148, 38562), (152, 38613), (155, 38655), (160, 38697), (163, 38712), (167, 38721), (174, 38739), (175, 38742), (177, 38754), (182, 38766), (184, 38781), (185, 38784), (191, 38814), (202, 38910), (210, 38988), (216, 39033), (219, 39072), (230, 39174), (237, 39249), (240, 39273), (241, 39276), (249, 39348), (255, 39441), (256, 39450), (257, 39462),

Gene: SVoro\_88 Start: 36237, Stop: 38861, Start Num: 6

Candidate Starts for SVoro\_88:

(Start: 6 @36237 has 151 MA's), (13, 36306), (Start: 14 @36312 has 2 MA's), (19, 36330), (24, 36366), (42, 36474), (45, 36486), (56, 36651), (57, 36657), (67, 36852), (70, 36873), (72, 36894), (73, 36903), (79, 36960), (81, 37002), (83, 37056), (84, 37101), (91, 37170), (93, 37206), (95, 37233), (97, 37260), (101, 37320), (104, 37353), (105, 37356), (108, 37377), (110, 37404), (113, 37476), (117, 37545), (122, 37596), (135, 37806), (136, 37812), (140, 37851), (141, 37893), (143, 37905), (145, 37923), (164, 38097), (166, 38106), (167, 38109), (169, 38112), (171, 38124), (175, 38136), (176, 38139), (178, 38154), (195, 38241), (197, 38256), (212, 38400), (213, 38412), (233, 38592), (236, 38610), (245, 38691), (249, 38727), (251, 38748), (255, 38814),

Gene: Salacia\_94 Start: 36357, Stop: 38981, Start Num: 6

Candidate Starts for Salacia\_94:

(Start: 6 @36357 has 151 MA's), (13, 36426), (Start: 14 @36432 has 2 MA's), (19, 36450), (24, 36486), (42, 36594), (45, 36606), (56, 36771), (57, 36777), (67, 36972), (70, 36993), (72, 37014), (73, 37023), (79, 37080), (81, 37122), (83, 37176), (84, 37221), (91, 37290), (93, 37326), (95, 37353), (97, 37380), (101, 37440), (104, 37473), (105, 37476), (109, 37506), (110, 37524), (117, 37665), (122, 37716),

(135, 37926), (136, 37932), (140, 37971), (141, 38013), (143, 38025), (145, 38043), (164, 38217), (166, 38226), (167, 38229), (169, 38232), (171, 38244), (175, 38256), (176, 38259), (178, 38274), (195, 38361), (197, 38376), (212, 38520), (213, 38532), (233, 38712), (236, 38730), (245, 38811), (249, 38847), (251, 38868), (255, 38934),

Gene: Sauce\_90 Start: 35097, Stop: 37721, Start Num: 6

Candidate Starts for Sauce\_90:

(Start: 6 @35097 has 151 MA's), (13, 35166), (Start: 14 @35172 has 2 MA's), (19, 35190), (24, 35226), (42, 35334), (45, 35346), (56, 35511), (57, 35517), (67, 35712), (70, 35733), (72, 35754), (73, 35763), (79, 35820), (81, 35862), (83, 35916), (84, 35961), (91, 36030), (93, 36066), (95, 36093), (97, 36120), (101, 36180), (104, 36213), (105, 36216), (109, 36246), (110, 36264), (117, 36405), (122, 36456), (135, 36666), (136, 36672), (140, 36711), (141, 36753), (143, 36765), (145, 36783), (164, 36957), (166, 36966), (167, 36969), (169, 36972), (171, 36984), (175, 36996), (176, 36999), (178, 37014), (195, 37101), (197, 37116), (212, 37260), (213, 37272), (233, 37452), (236, 37470), (245, 37551), (249, 37587), (251, 37608), (255, 37674),

Gene: ScottMcG\_87 Start: 35250, Stop: 37853, Start Num: 6

Candidate Starts for ScottMcG\_87:

(Start: 6 @35250 has 151 MA's), (13, 35319), (Start: 14 @35325 has 2 MA's), (19, 35343), (24, 35379), (42, 35487), (45, 35499), (56, 35664), (57, 35670), (67, 35865), (70, 35886), (72, 35907), (73, 35916), (79, 35973), (81, 36015), (83, 36069), (84, 36114), (91, 36183), (93, 36219), (95, 36246), (97, 36273), (101, 36333), (104, 36366), (105, 36369), (108, 36390), (110, 36417), (113, 36489), (117, 36558), (122, 36609), (135, 36819), (136, 36825), (137, 36831), (140, 36864), (141, 36906), (143, 36918), (145, 36936), (164, 37110), (166, 37119), (167, 37122), (169, 37125), (171, 37137), (175, 37149), (176, 37152), (178, 37167), (195, 37233), (197, 37248), (212, 37392), (213, 37404), (233, 37584), (236, 37602), (245, 37683), (249, 37719), (251, 37740), (255, 37806),

Gene: Sebata\_91 Start: 36733, Stop: 39357, Start Num: 6

Candidate Starts for Sebata\_91:

(Start: 6 @36733 has 151 MA's), (13, 36802), (Start: 14 @36808 has 2 MA's), (19, 36826), (24, 36862), (42, 36970), (45, 36982), (56, 37147), (57, 37153), (67, 37348), (70, 37369), (72, 37390), (73, 37399), (79, 37456), (81, 37498), (83, 37552), (84, 37597), (91, 37666), (93, 37702), (95, 37729), (97, 37756), (101, 37816), (104, 37849), (105, 37852), (109, 37882), (110, 37900), (117, 38041), (122, 38092), (135, 38302), (136, 38308), (140, 38347), (141, 38389), (143, 38401), (145, 38419), (164, 38593), (166, 38602), (167, 38605), (169, 38608), (171, 38620), (175, 38632), (176, 38635), (178, 38650), (195, 38737), (197, 38752), (212, 38896), (213, 38908), (233, 39088), (236, 39106), (245, 39187), (249, 39223), (251, 39244), (255, 39310),

Gene: Settecandela\_46 Start: 26549, Stop: 28942, Start Num: 4

Candidate Starts for Settecandela\_46:

(Start: 4 @26549 has 2 MA's), (12, 26636), (13, 26660), (18, 26681), (21, 26708), (23, 26717), (28, 26759), (31, 26771), (33, 26786), (45, 26828), (46, 26837), (49, 26873), (52, 26918), (53, 26930), (54, 26954), (59, 27047), (69, 27200), (72, 27233), (73, 27242), (74, 27254), (89, 27473), (92, 27497), (93, 27530), (96, 27560), (97, 27584), (98, 27614), (101, 27644), (103, 27659), (106, 27689), (110, 27728), (111, 27764), (112, 27773), (114, 27860), (117, 27875), (127, 27998), (130, 28043), (137, 28148), (139, 28163), (141, 28223), (142, 28232), (144, 28250), (145, 28253), (147, 28268), (151, 28313), (153, 28331), (156, 28358), (158, 28388), (167, 28409), (169, 28412), (178, 28433), (204, 28457), (205, 28466), (208, 28475), (213, 28511), (217, 28535), (219, 28568), (220, 28580), (237, 28718), (239, 28733), (248, 28796), (249, 28805), (255, 28892), (258, 28928),

Gene: Shaqnato\_82 Start: 33972, Stop: 36596, Start Num: 6

Candidate Starts for Shaqnato\_82:

(Start: 6 @33972 has 151 MA's), (13, 34041), (Start: 14 @34047 has 2 MA's), (19, 34065), (24, 34101), (42, 34209), (45, 34221), (56, 34386), (57, 34392), (67, 34587), (70, 34608), (72, 34629), (73, 34638), (79, 34695), (81, 34737), (83, 34791), (84, 34836), (91, 34905), (93, 34941), (95, 34968), (97, 34995), (101, 35055), (104, 35088), (105, 35091), (109, 35121), (110, 35139), (117, 35280), (122, 35331), (135, 35541), (136, 35547), (140, 35586), (141, 35628), (143, 35640), (145, 35658), (164, 35832), (166, 35841), (167, 35844), (169, 35847), (171, 35859), (175, 35871), (176, 35874), (178, 35889), (195, 35976), (197, 35991), (212, 36135), (213, 36147), (233, 36327), (236, 36345), (245, 36426), (249, 36462), (251, 36483), (255, 36549),

Gene: Shelob\_92 Start: 37235, Stop: 39859, Start Num: 6

Candidate Starts for Shelob\_92:

(Start: 6 @37235 has 151 MA's), (13, 37304), (Start: 14 @37310 has 2 MA's), (19, 37328), (24, 37364), (42, 37472), (45, 37484), (56, 37649), (57, 37655), (67, 37850), (70, 37871), (72, 37892), (73, 37901), (79, 37958), (81, 38000), (83, 38054), (84, 38099), (91, 38168), (93, 38204), (95, 38231), (97, 38258), (101, 38318), (104, 38351), (105, 38354), (109, 38384), (110, 38402), (117, 38543), (122, 38594), (135, 38804), (136, 38810), (140, 38849), (141, 38891), (143, 38903), (145, 38921), (164, 39095), (166, 39104), (167, 39107), (169, 39110), (171, 39122), (175, 39134), (176, 39137), (178, 39152), (195, 39239), (197, 39254), (212, 39398), (213, 39410), (233, 39590), (236, 39608), (245, 39689), (249, 39725), (251, 39746), (255, 39812),

Gene: Shifa\_79 Start: 33706, Stop: 36309, Start Num: 6

Candidate Starts for Shifa\_79:

(Start: 6 @33706 has 151 MA's), (13, 33775), (Start: 14 @33781 has 2 MA's), (19, 33799), (24, 33835), (42, 33943), (45, 33955), (54, 34081), (57, 34126), (67, 34321), (70, 34342), (72, 34363), (73, 34372), (79, 34429), (81, 34471), (83, 34525), (84, 34570), (91, 34639), (93, 34675), (95, 34702), (97, 34729), (101, 34789), (104, 34822), (105, 34825), (110, 34873), (113, 34945), (117, 35014), (122, 35065), (135, 35275), (136, 35281), (137, 35287), (140, 35320), (141, 35362), (143, 35374), (145, 35392), (164, 35566), (166, 35575), (167, 35578), (169, 35581), (171, 35593), (175, 35605), (176, 35608), (178, 35623), (195, 35689), (197, 35704), (212, 35848), (213, 35860), (233, 36040), (236, 36058), (245, 36139), (249, 36175), (251, 36196), (255, 36262),

Gene: Shrimp\_90 Start: 36247, Stop: 38871, Start Num: 6

Candidate Starts for Shrimp\_90:

(Start: 6 @36247 has 151 MA's), (13, 36316), (Start: 14 @36322 has 2 MA's), (19, 36340), (24, 36376), (42, 36484), (45, 36496), (56, 36661), (57, 36667), (67, 36862), (70, 36883), (72, 36904), (73, 36913), (79, 36970), (81, 37012), (83, 37066), (84, 37111), (91, 37180), (93, 37216), (95, 37243), (97, 37270), (101, 37330), (104, 37363), (105, 37366), (109, 37396), (110, 37414), (117, 37555), (122, 37606), (135, 37816), (136, 37822), (140, 37861), (141, 37903), (143, 37915), (145, 37933), (164, 38107), (166, 38116), (167, 38119), (169, 38122), (171, 38134), (175, 38146), (176, 38149), (178, 38164), (195, 38251), (197, 38266), (212, 38410), (213, 38422), (233, 38602), (236, 38620), (245, 38701), (249, 38737), (251, 38758), (255, 38824),

Gene: SilverDipper\_91 Start: 35248, Stop: 37872, Start Num: 6

Candidate Starts for SilverDipper\_91:

(Start: 6 @35248 has 151 MA's), (13, 35317), (Start: 14 @35323 has 2 MA's), (19, 35341), (24, 35377), (42, 35485), (45, 35497), (56, 35662), (57, 35668), (67, 35863), (70, 35884), (72, 35905), (73, 35914), (79, 35971), (81, 36013), (83, 36067), (84, 36112), (91, 36181), (93, 36217), (95, 36244), (97, 36271), (101, 36331), (104, 36364), (105, 36367), (109, 36397), (110, 36415), (117, 36556), (122, 36607), (135, 36817), (136, 36823), (140, 36862), (141, 36904), (143, 36916), (145, 36934), (164, 37108), (166, 37117), (167, 37120), (169, 37123), (171, 37135), (175, 37147), (176, 37150), (178, 37165), (195, 37252), (197, 37267), (212, 37411), (213, 37423), (233, 37603), (236, 37621), (245, 37702), (249, 37738), (251, 37759), (255, 37825),

Gene: Skog\_151 Start: 66444, Stop: 69053, Start Num: 6

Candidate Starts for Skog\_151:

(Start: 6 @66444 has 151 MA's), (Start: 9 @66462 has 1 MA's), (21, 66561), (27, 66600), (45, 66657), (48, 66687), (59, 66876), (61, 66903), (67, 67023), (69, 67032), (70, 67044), (71, 67050), (72, 67065), (73, 67074), (74, 67086), (84, 67272), (91, 67341), (93, 67377), (94, 67401), (99, 67479), (101, 67491), (110, 67575), (112, 67620), (115, 67704), (116, 67713), (117, 67716), (135, 67977), (136, 67983), (141, 68064), (142, 68073), (143, 68076), (145, 68094), (148, 68112), (154, 68187), (155, 68205), (160, 68247), (163, 68262), (167, 68271), (173, 68289), (174, 68295), (175, 68298), (188, 68352), (190, 68367), (201, 68463), (202, 68466), (210, 68544), (216, 68589), (219, 68628), (221, 68652), (223, 68667), (226, 68685), (228, 68724), (230, 68742), (236, 68805), (237, 68817), (243, 68868), (249, 68913), (253, 68994), (255, 69006), (257, 69027),

Gene: SmallFry\_90 Start: 35199, Stop: 37823, Start Num: 6

Candidate Starts for SmallFry\_90:

(Start: 6 @35199 has 151 MA's), (13, 35268), (Start: 14 @35274 has 2 MA's), (19, 35292), (24, 35328), (42, 35436), (45, 35448), (56, 35613), (57, 35619), (67, 35814), (70, 35835), (72, 35856), (73, 35865), (79, 35922), (81, 35964), (83, 36018), (84, 36063), (91, 36132), (93, 36168), (95, 36195), (97, 36222), (101, 36282), (102, 36294), (104, 36315), (105, 36318), (109, 36348), (110, 36366), (117, 36507), (122, 36558), (135, 36768), (136, 36774), (140, 36813), (141, 36855), (143, 36867), (145, 36885), (164, 37059), (166, 37068), (167, 37071), (169, 37074), (171, 37086), (175, 37098), (176, 37101), (178, 37116), (195, 37203), (197, 37218), (212, 37362), (213, 37374), (233, 37554), (236, 37572), (245, 37653), (249, 37689), (251, 37710), (255, 37776),

Gene: Specks\_96 Start: 37983, Stop: 40607, Start Num: 6

Candidate Starts for Specks\_96:

(Start: 6 @37983 has 151 MA's), (13, 38052), (Start: 14 @38058 has 2 MA's), (19, 38076), (24, 38112), (42, 38220), (45, 38232), (56, 38397), (57, 38403), (67, 38598), (70, 38619), (72, 38640), (73, 38649), (79, 38706), (81, 38748), (83, 38802), (84, 38847), (91, 38916), (93, 38952), (95, 38979), (97, 39006), (101, 39066), (102, 39078), (104, 39099), (105, 39102), (109, 39132), (110, 39150), (117, 39291), (122, 39342), (135, 39552), (136, 39558), (140, 39597), (141, 39639), (143, 39651), (145, 39669), (164, 39843), (166, 39852), (167, 39855), (169, 39858), (171, 39870), (175, 39882), (176, 39885), (178, 39900), (195, 39987), (197, 40002), (212, 40146), (213, 40158), (233, 40338), (236, 40356), (245, 40437), (249, 40473), (251, 40494), (255, 40560),

Gene: Sprinklers\_85 Start: 34469, Stop: 37093, Start Num: 6

Candidate Starts for Sprinklers\_85:

(Start: 6 @34469 has 151 MA's), (13, 34538), (Start: 14 @34544 has 2 MA's), (19, 34562), (24, 34598), (42, 34706), (45, 34718), (56, 34883), (57, 34889), (67, 35084), (70, 35105), (72, 35126), (73, 35135), (79, 35192), (81, 35234), (83, 35288), (84, 35333), (91, 35402), (93, 35438), (95, 35465), (97, 35492), (101, 35552), (104, 35585), (105, 35588), (109, 35618), (110, 35636), (117, 35777), (122, 35828), (135, 36038), (136, 36044), (140, 36083), (141, 36125), (143, 36137), (145, 36155), (164, 36329), (166, 36338), (167, 36341), (169, 36344), (171, 36356), (175, 36368), (176, 36371), (178, 36386), (195, 36473), (197, 36488), (212, 36632), (213, 36644), (233, 36824), (236, 36842), (245, 36923), (249, 36959), (251, 36980), (255, 37046),

Gene: Spud\_90 Start: 36211, Stop: 38814, Start Num: 6

Candidate Starts for Spud\_90:

(Start: 6 @36211 has 151 MA's), (13, 36280), (Start: 14 @36286 has 2 MA's), (19, 36304), (24, 36340), (42, 36448), (45, 36460), (56, 36625), (57, 36631), (67, 36826), (70, 36847), (72, 36868), (73, 36877), (79, 36934), (81, 36976), (83, 37030), (84, 37075), (91, 37144), (93, 37180), (95, 37207), (97, 37234), (101, 37294), (104, 37327), (105, 37330), (108, 37351), (110, 37378), (113, 37450), (117, 37519), (122, 37570), (135, 37780), (136, 37786), (137, 37792), (140, 37825), (141, 37867), (143, 37879), (145, 37897), (164, 38071), (166, 38080), (167, 38083), (169, 38086), (171, 38098), (175, 38110),

(176, 38113), (178, 38128), (195, 38194), (197, 38209), (212, 38353), (213, 38365), (233, 38545), (236, 38563), (245, 38644), (249, 38680), (251, 38701), (255, 38767),

Gene: SrishMeg2525\_89 Start: 35579, Stop: 38203, Start Num: 6

Candidate Starts for SrishMeg2525\_89:

(Start: 6 @35579 has 151 MA's), (13, 35648), (Start: 14 @35654 has 2 MA's), (19, 35672), (24, 35708), (42, 35816), (45, 35828), (56, 35993), (57, 35999), (67, 36194), (70, 36215), (72, 36236), (73, 36245), (79, 36302), (81, 36344), (83, 36398), (84, 36443), (91, 36512), (93, 36548), (95, 36575), (97, 36602), (101, 36662), (104, 36695), (105, 36698), (109, 36728), (110, 36746), (117, 36887), (122, 36938), (135, 37148), (136, 37154), (140, 37193), (141, 37235), (143, 37247), (145, 37265), (164, 37439), (166, 37448), (167, 37451), (169, 37454), (171, 37466), (175, 37478), (176, 37481), (178, 37496), (195, 37583), (197, 37598), (212, 37742), (213, 37754), (233, 37934), (236, 37952), (245, 38033), (249, 38069), (251, 38090), (255, 38156),

Gene: StephanieG\_89 Start: 37059, Stop: 39683, Start Num: 6

Candidate Starts for StephanieG\_89:

(Start: 6 @37059 has 151 MA's), (13, 37128), (Start: 14 @37134 has 2 MA's), (19, 37152), (24, 37188), (42, 37296), (45, 37308), (56, 37473), (57, 37479), (67, 37674), (70, 37695), (72, 37716), (73, 37725), (79, 37782), (81, 37824), (83, 37878), (84, 37923), (91, 37992), (93, 38028), (95, 38055), (97, 38082), (101, 38142), (104, 38175), (105, 38178), (109, 38208), (110, 38226), (117, 38367), (122, 38418), (135, 38628), (136, 38634), (137, 38640), (140, 38673), (141, 38715), (143, 38727), (145, 38745), (164, 38919), (166, 38928), (167, 38931), (169, 38934), (171, 38946), (175, 38958), (176, 38961), (178, 38976), (195, 39063), (197, 39078), (212, 39222), (213, 39234), (233, 39414), (236, 39432), (245, 39513), (249, 39549), (251, 39570), (255, 39636),

Gene: Stormageddon\_11 Start: 9594, Stop: 12167, Start Num: 10

Candidate Starts for Stormageddon\_11:

(8, 9585), (Start: 10 @9594 has 3 MA's), (26, 9702), (36, 9765), (40, 9783), (44, 9810), (46, 9825), (47, 9837), (57, 9987), (59, 10035), (60, 10041), (66, 10143), (70, 10197), (72, 10218), (74, 10239), (80, 10302), (85, 10416), (86, 10425), (91, 10482), (92, 10485), (93, 10518), (100, 10629), (101, 10632), (104, 10665), (109, 10698), (110, 10716), (112, 10761), (116, 10854), (117, 10857), (119, 10878), (120, 10890), (126, 10971), (128, 10983), (136, 11124), (145, 11235), (181, 11451), (225, 11772), (235, 11886), (237, 11907), (249, 12021), (250, 12033), (252, 12042), (254, 12108), (255, 12117),

Gene: Stubby\_83 Start: 34297, Stop: 36900, Start Num: 6

Candidate Starts for Stubby\_83:

(Start: 6 @34297 has 151 MA's), (13, 34366), (Start: 14 @34372 has 2 MA's), (19, 34390), (24, 34426), (42, 34534), (45, 34546), (56, 34711), (57, 34717), (67, 34912), (70, 34933), (72, 34954), (73, 34963), (79, 35020), (81, 35062), (83, 35116), (84, 35161), (91, 35230), (93, 35266), (95, 35293), (97, 35320), (101, 35380), (104, 35413), (105, 35416), (108, 35437), (110, 35464), (113, 35536), (117, 35605), (122, 35656), (135, 35866), (136, 35872), (137, 35878), (140, 35911), (141, 35953), (143, 35965), (145, 35983), (164, 36157), (166, 36166), (167, 36169), (169, 36172), (171, 36184), (175, 36196), (176, 36199), (178, 36214), (195, 36280), (197, 36295), (212, 36439), (213, 36451), (233, 36631), (236, 36649), (245, 36730), (249, 36766), (251, 36787), (255, 36853),

Gene: StubbySaigey\_92 Start: 34536, Stop: 37160, Start Num: 6

Candidate Starts for StubbySaigey\_92:

(Start: 6 @34536 has 151 MA's), (13, 34605), (Start: 14 @34611 has 2 MA's), (19, 34629), (24, 34665), (42, 34773), (45, 34785), (56, 34950), (57, 34956), (67, 35151), (70, 35172), (72, 35193), (73, 35202), (79, 35259), (81, 35301), (83, 35355), (84, 35400), (91, 35469), (93, 35505), (95, 35532), (97, 35559), (101, 35619), (104, 35652), (105, 35655), (108, 35676), (110, 35703), (113, 35775), (117, 35844), (122, 35895), (135, 36105), (136, 36111), (137, 36117), (140, 36150), (141, 36192), (143, 36204), (145, 36222), (164, 36396), (166, 36405), (167, 36408), (169, 36411), (171, 36423), (175, 36435),



(176, 36438), (178, 36453), (195, 36540), (197, 36555), (212, 36699), (213, 36711), (233, 36891), (236, 36909), (245, 36990), (249, 37026), (251, 37047), (255, 37113),

Gene: Tainan\_95 Start: 37633, Stop: 40257, Start Num: 6

Candidate Starts for Tainan\_95:

(Start: 6 @37633 has 151 MA's), (13, 37702), (Start: 14 @37708 has 2 MA's), (19, 37726), (24, 37762), (42, 37870), (45, 37882), (56, 38047), (57, 38053), (67, 38248), (70, 38269), (72, 38290), (73, 38299), (79, 38356), (81, 38398), (83, 38452), (84, 38497), (91, 38566), (93, 38602), (95, 38629), (97, 38656), (101, 38716), (104, 38749), (105, 38752), (109, 38782), (110, 38800), (117, 38941), (122, 38992), (135, 39202), (136, 39208), (140, 39247), (141, 39289), (143, 39301), (145, 39319), (164, 39493), (166, 39502), (167, 39505), (169, 39508), (171, 39520), (175, 39532), (176, 39535), (178, 39550), (195, 39637), (197, 39652), (212, 39796), (213, 39808), (233, 39988), (236, 40006), (245, 40087), (249, 40123), (251, 40144), (255, 40210),

Gene: Teardrop\_90 Start: 35307, Stop: 37931, Start Num: 6

Candidate Starts for Teardrop\_90:

(Start: 6 @35307 has 151 MA's), (13, 35376), (Start: 14 @35382 has 2 MA's), (19, 35400), (24, 35436), (42, 35544), (45, 35556), (56, 35721), (57, 35727), (67, 35922), (70, 35943), (72, 35964), (73, 35973), (79, 36030), (81, 36072), (83, 36126), (84, 36171), (91, 36240), (93, 36276), (95, 36303), (97, 36330), (101, 36390), (102, 36402), (104, 36423), (105, 36426), (109, 36456), (110, 36474), (117, 36615), (122, 36666), (135, 36876), (136, 36882), (140, 36921), (141, 36963), (143, 36975), (145, 36993), (164, 37167), (166, 37176), (167, 37179), (169, 37182), (171, 37194), (175, 37206), (176, 37209), (178, 37224), (195, 37311), (197, 37326), (212, 37470), (213, 37482), (233, 37662), (236, 37680), (245, 37761), (249, 37797), (251, 37818), (255, 37884),

Gene: TinyTim\_90 Start: 36243, Stop: 38867, Start Num: 6

Candidate Starts for TinyTim\_90:

(Start: 6 @36243 has 151 MA's), (13, 36312), (Start: 14 @36318 has 2 MA's), (19, 36336), (24, 36372), (42, 36480), (45, 36492), (56, 36657), (57, 36663), (67, 36858), (70, 36879), (72, 36900), (73, 36909), (79, 36966), (81, 37008), (83, 37062), (84, 37107), (91, 37176), (93, 37212), (95, 37239), (97, 37266), (101, 37326), (104, 37359), (105, 37362), (109, 37392), (110, 37410), (117, 37551), (122, 37602), (135, 37812), (136, 37818), (140, 37857), (141, 37899), (143, 37911), (145, 37929), (164, 38103), (166, 38112), (167, 38115), (169, 38118), (171, 38130), (175, 38142), (176, 38145), (178, 38160), (195, 38247), (197, 38262), (212, 38406), (213, 38418), (233, 38598), (236, 38616), (245, 38697), (249, 38733), (251, 38754), (255, 38820),

Gene: Tonenili\_104 Start: 40235, Stop: 42874, Start Num: 6

Candidate Starts for Tonenili\_104:

(Start: 6 @40235 has 151 MA's), (13, 40304), (Start: 14 @40310 has 2 MA's), (24, 40364), (38, 40457), (42, 40487), (45, 40499), (47, 40520), (56, 40664), (57, 40670), (64, 40796), (67, 40865), (69, 40874), (73, 40916), (79, 40973), (81, 41015), (83, 41069), (84, 41114), (89, 41162), (91, 41183), (93, 41219), (95, 41246), (97, 41273), (99, 41321), (101, 41333), (104, 41366), (105, 41369), (108, 41390), (110, 41417), (113, 41489), (117, 41558), (122, 41609), (135, 41819), (136, 41825), (137, 41831), (140, 41864), (141, 41906), (143, 41918), (145, 41936), (164, 42110), (167, 42122), (171, 42137), (176, 42152), (178, 42167), (186, 42203), (195, 42257), (197, 42272), (212, 42416), (213, 42428), (236, 42623), (249, 42740), (251, 42761), (255, 42827),

Gene: Tortoise16\_88 Start: 36101, Stop: 38725, Start Num: 6

Candidate Starts for Tortoise16\_88:

(Start: 6 @36101 has 151 MA's), (13, 36170), (Start: 14 @36176 has 2 MA's), (19, 36194), (24, 36230), (42, 36338), (45, 36350), (56, 36515), (57, 36521), (67, 36716), (70, 36737), (72, 36758), (73, 36767), (79, 36824), (81, 36866), (83, 36920), (84, 36965), (91, 37034), (93, 37070), (95, 37097), (97, 37124), (101, 37184), (104, 37217), (105, 37220), (109, 37250), (110, 37268), (117, 37409), (122, 37460),

(135, 37670), (136, 37676), (140, 37715), (141, 37757), (143, 37769), (145, 37787), (164, 37961), (166, 37970), (167, 37973), (169, 37976), (171, 37988), (175, 38000), (176, 38003), (178, 38018), (195, 38105), (197, 38120), (212, 38264), (213, 38276), (233, 38456), (236, 38474), (245, 38555), (249, 38591), (251, 38612), (255, 38678),

Gene: Trinitium\_86 Start: 34296, Stop: 36899, Start Num: 6

Candidate Starts for Trinitium\_86:

(Start: 6 @34296 has 151 MA's), (13, 34365), (Start: 14 @34371 has 2 MA's), (19, 34389), (24, 34425), (42, 34533), (45, 34545), (56, 34710), (57, 34716), (67, 34911), (70, 34932), (72, 34953), (73, 34962), (79, 35019), (81, 35061), (83, 35115), (84, 35160), (91, 35229), (93, 35265), (95, 35292), (97, 35319), (101, 35379), (104, 35412), (105, 35415), (108, 35436), (110, 35463), (113, 35535), (117, 35604), (122, 35655), (135, 35865), (136, 35871), (137, 35877), (140, 35910), (141, 35952), (143, 35964), (145, 35982), (164, 36156), (166, 36165), (167, 36168), (169, 36171), (171, 36183), (175, 36195), (176, 36198), (178, 36213), (195, 36279), (197, 36294), (212, 36438), (213, 36450), (233, 36630), (236, 36648), (245, 36729), (249, 36765), (251, 36786), (255, 36852),

Gene: Turret\_85 Start: 33962, Stop: 36565, Start Num: 6

Candidate Starts for Turret\_85:

(Start: 6 @33962 has 151 MA's), (13, 34031), (Start: 14 @34037 has 2 MA's), (19, 34055), (24, 34091), (42, 34199), (45, 34211), (56, 34376), (57, 34382), (67, 34577), (70, 34598), (72, 34619), (73, 34628), (79, 34685), (81, 34727), (83, 34781), (84, 34826), (91, 34895), (93, 34931), (95, 34958), (97, 34985), (101, 35045), (104, 35078), (105, 35081), (108, 35102), (110, 35129), (113, 35201), (117, 35270), (122, 35321), (135, 35531), (136, 35537), (137, 35543), (140, 35576), (141, 35618), (143, 35630), (145, 35648), (164, 35822), (166, 35831), (167, 35834), (169, 35837), (171, 35849), (175, 35861), (176, 35864), (178, 35879), (195, 35945), (197, 35960), (212, 36104), (213, 36116), (233, 36296), (236, 36314), (245, 36395), (249, 36431), (251, 36452), (255, 36518),

Gene: ValleyTerrace\_90 Start: 35248, Stop: 37872, Start Num: 6

Candidate Starts for ValleyTerrace\_90:

(Start: 6 @35248 has 151 MA's), (13, 35317), (Start: 14 @35323 has 2 MA's), (19, 35341), (24, 35377), (42, 35485), (45, 35497), (56, 35662), (57, 35668), (67, 35863), (70, 35884), (72, 35905), (73, 35914), (79, 35971), (81, 36013), (83, 36067), (84, 36112), (91, 36181), (93, 36217), (95, 36244), (97, 36271), (101, 36331), (104, 36364), (105, 36367), (109, 36397), (110, 36415), (117, 36556), (122, 36607), (135, 36817), (136, 36823), (140, 36862), (141, 36904), (143, 36916), (145, 36934), (164, 37108), (166, 37117), (167, 37120), (169, 37123), (171, 37135), (175, 37147), (176, 37150), (178, 37165), (195, 37252), (197, 37267), (212, 37411), (213, 37423), (233, 37603), (236, 37621), (245, 37702), (249, 37738), (251, 37759), (255, 37825),

Gene: Wally\_89 Start: 34798, Stop: 37422, Start Num: 6

Candidate Starts for Wally\_89:

(Start: 6 @34798 has 151 MA's), (13, 34867), (Start: 14 @34873 has 2 MA's), (19, 34891), (24, 34927), (42, 35035), (45, 35047), (56, 35212), (57, 35218), (67, 35413), (70, 35434), (72, 35455), (73, 35464), (79, 35521), (81, 35563), (83, 35617), (84, 35662), (91, 35731), (93, 35767), (95, 35794), (97, 35821), (101, 35881), (104, 35914), (105, 35917), (108, 35938), (110, 35965), (113, 36037), (117, 36106), (122, 36157), (135, 36367), (136, 36373), (140, 36412), (141, 36454), (143, 36466), (145, 36484), (164, 36658), (166, 36667), (167, 36670), (169, 36673), (171, 36685), (175, 36697), (176, 36700), (178, 36715), (195, 36802), (197, 36817), (212, 36961), (213, 36973), (233, 37153), (236, 37171), (245, 37252), (249, 37288), (251, 37309), (255, 37375),

Gene: Willis\_91 Start: 36138, Stop: 38762, Start Num: 6

Candidate Starts for Willis\_91:

(Start: 6 @36138 has 151 MA's), (13, 36207), (Start: 14 @36213 has 2 MA's), (19, 36231), (24, 36267), (42, 36375), (45, 36387), (56, 36552), (57, 36558), (67, 36753), (70, 36774), (72, 36795), (73, 36804),

(79, 36861), (81, 36903), (83, 36957), (84, 37002), (91, 37071), (93, 37107), (95, 37134), (97, 37161), (101, 37221), (104, 37254), (105, 37257), (109, 37287), (110, 37305), (117, 37446), (122, 37497), (135, 37707), (136, 37713), (140, 37752), (141, 37794), (143, 37806), (145, 37824), (164, 37998), (166, 38007), (167, 38010), (169, 38013), (171, 38025), (175, 38037), (176, 38040), (178, 38055), (195, 38142), (197, 38157), (212, 38301), (213, 38313), (233, 38493), (236, 38511), (245, 38592), (249, 38628), (251, 38649), (255, 38715),

Gene: Yassified\_86 Start: 34529, Stop: 37132, Start Num: 6

Candidate Starts for Yassified\_86:

(Start: 6 @34529 has 151 MA's), (13, 34598), (Start: 14 @34604 has 2 MA's), (19, 34622), (24, 34658), (42, 34766), (45, 34778), (56, 34943), (57, 34949), (67, 35144), (70, 35165), (72, 35186), (73, 35195), (79, 35252), (81, 35294), (83, 35348), (84, 35393), (91, 35462), (93, 35498), (95, 35525), (97, 35552), (101, 35612), (104, 35645), (105, 35648), (109, 35678), (110, 35696), (117, 35837), (122, 35888), (135, 36098), (136, 36104), (140, 36143), (141, 36185), (143, 36197), (145, 36215), (164, 36389), (166, 36398), (167, 36401), (169, 36404), (171, 36416), (175, 36428), (176, 36431), (178, 36446), (195, 36512), (197, 36527), (212, 36671), (213, 36683), (233, 36863), (236, 36881), (245, 36962), (249, 36998), (251, 37019), (255, 37085),

Gene: YemiJoy2021\_91 Start: 36240, Stop: 38864, Start Num: 6

Candidate Starts for YemiJoy2021\_91:

(Start: 6 @36240 has 151 MA's), (13, 36309), (Start: 14 @36315 has 2 MA's), (19, 36333), (24, 36369), (42, 36477), (45, 36489), (56, 36654), (57, 36660), (67, 36855), (70, 36876), (72, 36897), (73, 36906), (79, 36963), (81, 37005), (83, 37059), (84, 37104), (91, 37173), (93, 37209), (95, 37236), (97, 37263), (101, 37323), (104, 37356), (105, 37359), (109, 37389), (110, 37407), (117, 37548), (122, 37599), (135, 37809), (136, 37815), (140, 37854), (141, 37896), (143, 37908), (145, 37926), (164, 38100), (166, 38109), (167, 38112), (169, 38115), (171, 38127), (175, 38139), (176, 38142), (178, 38157), (195, 38244), (197, 38259), (212, 38403), (213, 38415), (233, 38595), (236, 38613), (245, 38694), (249, 38730), (251, 38751), (255, 38817),

Gene: YoungMoneyMata\_90 Start: 34999, Stop: 37623, Start Num: 6

Candidate Starts for YoungMoneyMata\_90:

(Start: 6 @34999 has 151 MA's), (13, 35068), (Start: 14 @35074 has 2 MA's), (19, 35092), (24, 35128), (42, 35236), (45, 35248), (56, 35413), (57, 35419), (67, 35614), (70, 35635), (72, 35656), (73, 35665), (79, 35722), (81, 35764), (83, 35818), (84, 35863), (91, 35932), (93, 35968), (95, 35995), (97, 36022), (101, 36082), (104, 36115), (105, 36118), (109, 36148), (110, 36166), (117, 36307), (122, 36358), (135, 36568), (136, 36574), (140, 36613), (141, 36655), (143, 36667), (145, 36685), (164, 36859), (166, 36868), (167, 36871), (169, 36874), (171, 36886), (175, 36898), (176, 36901), (178, 36916), (195, 37003), (197, 37018), (212, 37162), (213, 37174), (233, 37354), (236, 37372), (245, 37453), (249, 37489), (251, 37510), (255, 37576),

Gene: Yucca\_90 Start: 36162, Stop: 38786, Start Num: 6

Candidate Starts for Yucca\_90:

(Start: 6 @36162 has 151 MA's), (13, 36231), (Start: 14 @36237 has 2 MA's), (19, 36255), (24, 36291), (42, 36399), (45, 36411), (56, 36576), (57, 36582), (67, 36777), (70, 36798), (72, 36819), (73, 36828), (79, 36885), (81, 36927), (83, 36981), (84, 37026), (91, 37095), (93, 37131), (95, 37158), (97, 37185), (101, 37245), (104, 37278), (105, 37281), (109, 37311), (110, 37329), (117, 37470), (122, 37521), (135, 37731), (136, 37737), (140, 37776), (141, 37818), (143, 37830), (145, 37848), (164, 38022), (166, 38031), (167, 38034), (169, 38037), (171, 38049), (175, 38061), (176, 38064), (178, 38079), (195, 38166), (197, 38181), (212, 38325), (213, 38337), (233, 38517), (236, 38535), (245, 38616), (249, 38652), (251, 38673), (255, 38739),

Gene: Zalkecks\_91 Start: 35928, Stop: 38552, Start Num: 6

Candidate Starts for Zalkecks\_91:

(Start: 6 @35928 has 151 MA's), (13, 35997), (Start: 14 @36003 has 2 MA's), (19, 36021), (24, 36057), (42, 36165), (45, 36177), (56, 36342), (57, 36348), (67, 36543), (70, 36564), (72, 36585), (73, 36594), (79, 36651), (81, 36693), (83, 36747), (84, 36792), (91, 36861), (93, 36897), (95, 36924), (97, 36951), (101, 37011), (104, 37044), (105, 37047), (109, 37077), (110, 37095), (117, 37236), (122, 37287), (135, 37497), (136, 37503), (140, 37542), (141, 37584), (143, 37596), (145, 37614), (164, 37788), (166, 37797), (167, 37800), (169, 37803), (171, 37815), (175, 37827), (176, 37830), (178, 37845), (195, 37932), (197, 37947), (212, 38091), (213, 38103), (233, 38283), (236, 38301), (245, 38382), (249, 38418), (251, 38439), (255, 38505),

Gene: Zeenon\_92 Start: 35855, Stop: 38479, Start Num: 6

Candidate Starts for Zeenon\_92:

(Start: 6 @35855 has 151 MA's), (13, 35924), (Start: 14 @35930 has 2 MA's), (19, 35948), (24, 35984), (42, 36092), (45, 36104), (56, 36269), (57, 36275), (67, 36470), (70, 36491), (72, 36512), (73, 36521), (79, 36578), (81, 36620), (83, 36674), (84, 36719), (91, 36788), (93, 36824), (95, 36851), (97, 36878), (101, 36938), (104, 36971), (105, 36974), (109, 37004), (110, 37022), (117, 37163), (122, 37214), (135, 37424), (136, 37430), (140, 37469), (141, 37511), (143, 37523), (145, 37541), (164, 37715), (166, 37724), (167, 37727), (169, 37730), (171, 37742), (175, 37754), (176, 37757), (178, 37772), (195, 37859), (197, 37874), (212, 38018), (213, 38030), (233, 38210), (236, 38228), (245, 38309), (249, 38345), (251, 38366), (255, 38432),

Gene: ZygoTaiga\_89 Start: 36244, Stop: 38868, Start Num: 6

Candidate Starts for ZygoTaiga\_89:

(Start: 6 @36244 has 151 MA's), (13, 36313), (Start: 14 @36319 has 2 MA's), (19, 36337), (24, 36373), (42, 36481), (45, 36493), (56, 36658), (57, 36664), (67, 36859), (70, 36880), (72, 36901), (73, 36910), (79, 36967), (81, 37009), (83, 37063), (84, 37108), (91, 37177), (93, 37213), (95, 37240), (97, 37267), (101, 37327), (104, 37360), (105, 37363), (109, 37393), (110, 37411), (117, 37552), (122, 37603), (135, 37813), (136, 37819), (140, 37858), (141, 37900), (143, 37912), (145, 37930), (164, 38104), (166, 38113), (167, 38116), (169, 38119), (171, 38131), (175, 38143), (176, 38146), (178, 38161), (195, 38248), (197, 38263), (212, 38407), (213, 38419), (233, 38599), (236, 38617), (245, 38698), (249, 38734), (251, 38755), (255, 38821),