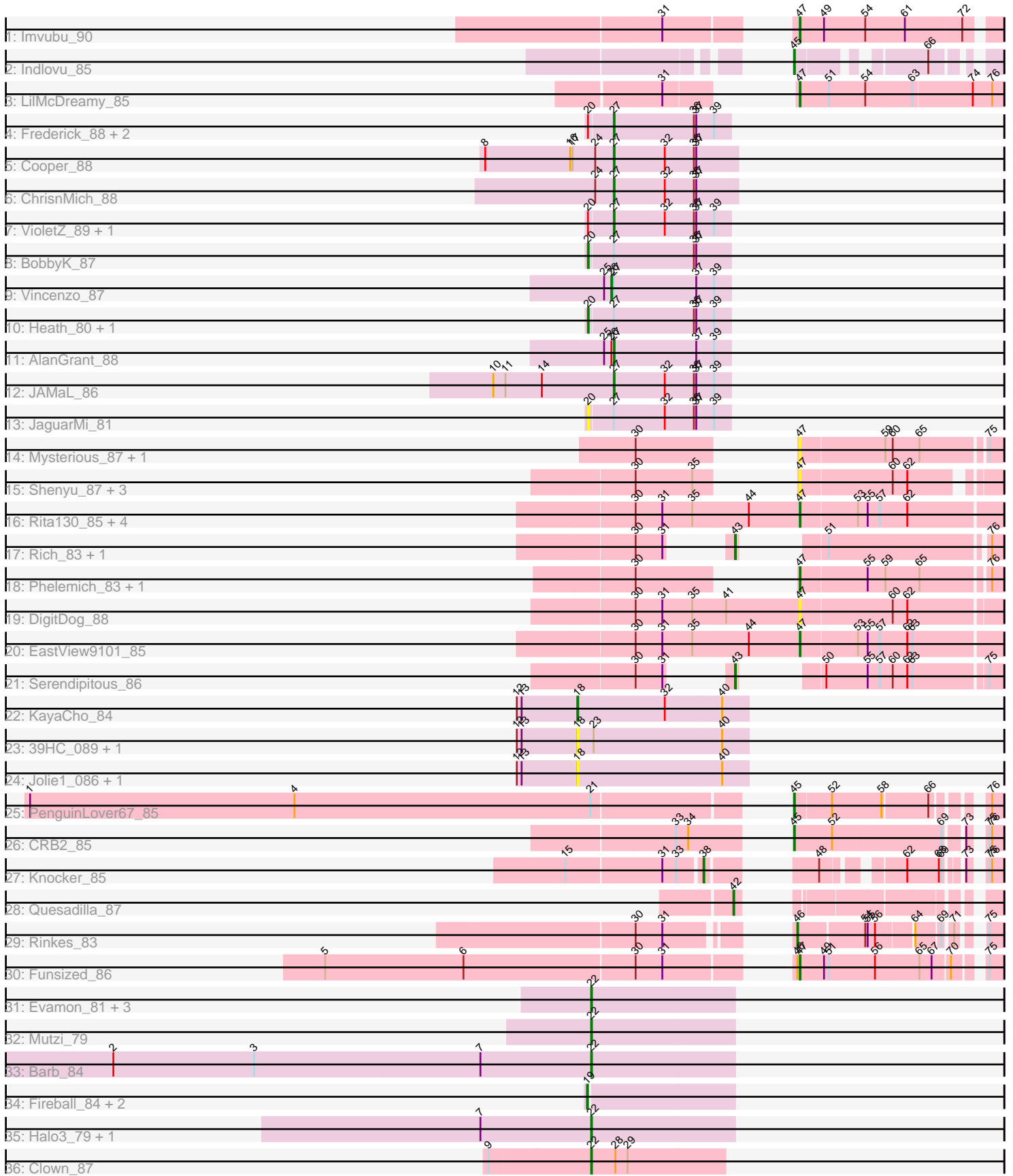


Pham 205160



Note: Tracks are now grouped by subcluster and scaled. Switching in subcluster is indicated by changes in track color. Track scale is now set by default to display the region 30 bp upstream of start 1 to 30 bp downstream of the last possible start. If this default region is judged to be packed too tightly with annotated starts, the track will be further scaled to only show that region of the ORF with annotated starts. This action will be indicated by adding "Zoomed" to the title. For starts, yellow indicates the location of called starts comprised solely of Glimmer/GeneMark auto-annotations, green indicates the location of called starts with at least 1 manual gene annotation.

Pham 205160 Report

This analysis was run 02/22/25 on database version 588.

Pham number 205160 has 58 members, 15 are drafts.

Phages represented in each track:

- Track 1 : Imvubu_90
- Track 2 : Indlovu_85
- Track 3 : LilMcDreamy_85
- Track 4 : Frederick_88, Mudslide_87, Apex_88
- Track 5 : Cooper_88
- Track 6 : ChrisnMich_88
- Track 7 : VioletZ_89, Prince_86
- Track 8 : BobbyK_87
- Track 9 : Vincenzo_87
- Track 10 : Heath_80, Lolalove_88
- Track 11 : AlanGrant_88
- Track 12 : JAMaL_86
- Track 13 : JaguarMi_81
- Track 14 : Mysterious_87, Nehemiah_85
- Track 15 : Shenyu_87, StinkyVeggy_84, Nangang_87, KarasumaRum_84
- Track 16 : Rita130_85, Donny_86, Acadian_86, SirJeffery_84, Suigeneris_87
- Track 17 : Rich_83, Bae_84
- Track 18 : Phelemich_83, Reprobate_85
- Track 19 : DigitDog_88
- Track 20 : EastView9101_85
- Track 21 : Serendipitous_86
- Track 22 : KayaCho_84
- Track 23 : 39HC_089, 40BC_089
- Track 24 : Jolie1_086, Hosp_084
- Track 25 : PenguinLover67_85
- Track 26 : CRB2_85
- Track 27 : Knocker_85
- Track 28 : Quesadilla_87
- Track 29 : Rinkes_83
- Track 30 : Funsized_86
- Track 31 : Evamon_81, SmokingBunny_82, Togo_81, Salvador_81
- Track 32 : Mutzi_79
- Track 33 : Barb_84
- Track 34 : Fireball_84, TillyBobJoe_79, Nubi_83
- Track 35 : Halo3_79, CoveyB_82
- Track 36 : Clown_87

Summary of Final Annotations (See graph section above for start numbers):

The start number called the most often in the published annotations is 27, it was called in 9 of the 43 non-draft genes in the pham.

Genes that call this "Most Annotated" start:

- AlanGrant_88, Apex_88, ChrisnMich_88, Cooper_88, Frederick_88, JAMaL_86, Mudslide_87, Prince_86, VioletZ_89,

Genes that have the "Most Annotated" start but do not call it:

- BobbyK_87, Heath_80, JaguarMi_81, Lolalove_88, Vincenzo_87,

Genes that do not have the "Most Annotated" start:

- 39HC_089, 40BC_089, Acadian_86, Bae_84, Barb_84, CRB2_85, Clown_87, CoveyB_82, DigitDog_88, Donny_86, EastView9101_85, Evamon_81, Fireball_84, Funsized_86, Halo3_79, Hosp_084, Imvubu_90, Indlovu_85, Jolie1_086, KarasumaRum_84, KayaCho_84, Knocker_85, LilMcDreamy_85, Mutzi_79, Mysterious_87, Nangang_87, Nehemiah_85, Nubi_83, PenguinLover67_85, Phelemich_83, Quesadilla_87, Reprobate_85, Rich_83, Rinkes_83, Rita130_85, Salvador_81, Serendipitous_86, Shenyu_87, SirJeffery_84, SmokingBunny_82, StinkyVeggy_84, Suigeneris_87, TillyBobJoe_79, Togo_81,

Summary by start number:

Start 18:

- Found in 5 of 58 (8.6%) of genes in pham
- Manual Annotations of this start: 1 of 43
- Called 100.0% of time when present
- Phage (with cluster) where this start called: 39HC_089 (B6), 40BC_089 (B6), Hosp_084 (B6), Jolie1_086 (B6), KayaCho_84 (B6),

Start 19:

- Found in 3 of 58 (5.2%) of genes in pham
- Manual Annotations of this start: 3 of 43
- Called 100.0% of time when present
- Phage (with cluster) where this start called: Fireball_84 (DC1), Nubi_83 (DC1), TillyBobJoe_79 (DC1),

Start 20:

- Found in 9 of 58 (15.5%) of genes in pham
- Manual Annotations of this start: 3 of 43
- Called 44.4% of time when present
- Phage (with cluster) where this start called: BobbyK_87 (B4), Heath_80 (B4), JaguarMi_81 (B4), Lolalove_88 (B4),

Start 22:

- Found in 9 of 58 (15.5%) of genes in pham
- Manual Annotations of this start: 8 of 43
- Called 100.0% of time when present

- Phage (with cluster) where this start called: Barb_84 (DC1), Clown_87 (DC2), CoveyB_82 (DC1), Evamon_81 (DC1), Halo3_79 (DC1), Mutzi_79 (DC1), Salvador_81 (DC1), SmokingBunny_82 (DC1), Togo_81 (DC1),

Start 26:

- Found in 2 of 58 (3.4%) of genes in pham
- Manual Annotations of this start: 1 of 43
- Called 50.0% of time when present
- Phage (with cluster) where this start called: Vincenzo_87 (B4),

Start 27:

- Found in 14 of 58 (24.1%) of genes in pham
- Manual Annotations of this start: 9 of 43
- Called 64.3% of time when present
- Phage (with cluster) where this start called: AlanGrant_88 (B4), Apex_88 (B4), ChrisnMich_88 (B4), Cooper_88 (B4), Frederick_88 (B4), JAMaL_86 (B4), Mudslide_87 (B4), Prince_86 (B4), VioletZ_89 (B4),

Start 38:

- Found in 1 of 58 (1.7%) of genes in pham
- Manual Annotations of this start: 1 of 43
- Called 100.0% of time when present
- Phage (with cluster) where this start called: Knocker_85 (B9),

Start 42:

- Found in 1 of 58 (1.7%) of genes in pham
- Manual Annotations of this start: 1 of 43
- Called 100.0% of time when present
- Phage (with cluster) where this start called: Quesadilla_87 (B9),

Start 43:

- Found in 3 of 58 (5.2%) of genes in pham
- Manual Annotations of this start: 3 of 43
- Called 100.0% of time when present
- Phage (with cluster) where this start called: Bae_84 (B5), Rich_83 (B5), Serendipitous_86 (B5),

Start 45:

- Found in 3 of 58 (5.2%) of genes in pham
- Manual Annotations of this start: 3 of 43
- Called 100.0% of time when present
- Phage (with cluster) where this start called: CRB2_85 (B9), Indlovu_85 (B11), PenguinLover67_85 (B9),

Start 46:

- Found in 2 of 58 (3.4%) of genes in pham
- Manual Annotations of this start: 1 of 43
- Called 50.0% of time when present
- Phage (with cluster) where this start called: Rinkes_83 (B9),

Start 47:

- Found in 18 of 58 (31.0%) of genes in pham
- Manual Annotations of this start: 9 of 43

- Called 100.0% of time when present
- Phage (with cluster) where this start called: Acadian_86 (B5), DigitDog_88 (B5), Donny_86 (B5), EastView9101_85 (B5), Funsized_86 (B9), Imvubu_90 (B10), KarasumaRum_84 (B5), LilMcDreamy_85 (B12), Mysterious_87 (B5), Nangang_87 (B5), Nehemiah_85 (B5), Phelemich_83 (B5), Reprobate_85 (B5), Rita130_85 (B5), Shenyu_87 (B5), SirJeffery_84 (B5), StinkyVeggy_84 (B5), Suigeneris_87 (B5),

Summary by clusters:

There are 9 clusters represented in this pham: B4, B5, B6, B12, B10, B11, DC2, B9, DC1,

Info for manual annotations of cluster B10:

- Start number 47 was manually annotated 1 time for cluster B10.

Info for manual annotations of cluster B11:

- Start number 45 was manually annotated 1 time for cluster B11.

Info for manual annotations of cluster B12:

- Start number 47 was manually annotated 1 time for cluster B12.

Info for manual annotations of cluster B4:

- Start number 20 was manually annotated 3 times for cluster B4.
- Start number 26 was manually annotated 1 time for cluster B4.
- Start number 27 was manually annotated 9 times for cluster B4.

Info for manual annotations of cluster B5:

- Start number 43 was manually annotated 3 times for cluster B5.
- Start number 47 was manually annotated 6 times for cluster B5.

Info for manual annotations of cluster B6:

- Start number 18 was manually annotated 1 time for cluster B6.

Info for manual annotations of cluster B9:

- Start number 38 was manually annotated 1 time for cluster B9.
- Start number 42 was manually annotated 1 time for cluster B9.
- Start number 45 was manually annotated 2 times for cluster B9.
- Start number 46 was manually annotated 1 time for cluster B9.
- Start number 47 was manually annotated 1 time for cluster B9.

Info for manual annotations of cluster DC1:

- Start number 19 was manually annotated 3 times for cluster DC1.
- Start number 22 was manually annotated 7 times for cluster DC1.

Info for manual annotations of cluster DC2:

- Start number 22 was manually annotated 1 time for cluster DC2.

Gene Information:

Gene: 39HC_089 Start: 65823, Stop: 65617, Start Num: 18

Candidate Starts for 39HC_089:

(12, 65898), (13, 65892), (Start: 18 @65823 has 1 MA's), (23, 65805), (40, 65649),

Gene: 40BC_089 Start: 65823, Stop: 65617, Start Num: 18

Candidate Starts for 40BC_089:

(12, 65898), (13, 65892), (Start: 18 @65823 has 1 MA's), (23, 65805), (40, 65649),

Gene: Acadian_86 Start: 64696, Stop: 64454, Start Num: 47

Candidate Starts for Acadian_86:

(30, 64897), (31, 64864), (35, 64828), (44, 64759), (Start: 47 @64696 has 9 MA's), (53, 64627), (55, 64615), (57, 64600), (62, 64567),

Gene: AlanGrant_88 Start: 66948, Stop: 66805, Start Num: 27

Candidate Starts for AlanGrant_88:

(25, 66960), (Start: 26 @66951 has 1 MA's), (Start: 27 @66948 has 9 MA's), (37, 66846), (39, 66825),

Gene: Apex_88 Start: 66270, Stop: 66127, Start Num: 27

Candidate Starts for Apex_88:

(Start: 20 @66297 has 3 MA's), (Start: 27 @66270 has 9 MA's), (36, 66171), (37, 66168), (39, 66147),

Gene: Bae_84 Start: 65056, Stop: 64823, Start Num: 43

Candidate Starts for Bae_84:

(30, 65104), (31, 65071), (Start: 43 @65056 has 3 MA's), (51, 65023), (76, 64837),

Gene: Barb_84 Start: 53980, Stop: 54156, Start Num: 22

Candidate Starts for Barb_84:

(2, 53392), (3, 53566), (7, 53845), (Start: 22 @53980 has 8 MA's),

Gene: BobbyK_87 Start: 65805, Stop: 65635, Start Num: 20

Candidate Starts for BobbyK_87:

(Start: 20 @65805 has 3 MA's), (Start: 27 @65778 has 9 MA's), (36, 65679), (37, 65676),

Gene: CRB2_85 Start: 66826, Stop: 66605, Start Num: 45

Candidate Starts for CRB2_85:

(33, 66907), (34, 66892), (Start: 45 @66826 has 3 MA's), (52, 66781), (69, 66652), (73, 66634), (75, 66622), (76, 66619),

Gene: ChrisnMich_88 Start: 65061, Stop: 64909, Start Num: 27

Candidate Starts for ChrisnMich_88:

(24, 65082), (Start: 27 @65061 has 9 MA's), (32, 64998), (36, 64962), (37, 64959),

Gene: Clown_87 Start: 55358, Stop: 55522, Start Num: 22

Candidate Starts for Clown_87:

(9, 55235), (Start: 22 @55358 has 8 MA's), (28, 55388), (29, 55403),

Gene: Cooper_88 Start: 65574, Stop: 65422, Start Num: 27

Candidate Starts for Cooper_88:

(8, 65730), (16, 65625), (17, 65622), (24, 65595), (Start: 27 @65574 has 9 MA's), (32, 65511), (36, 65475), (37, 65472),

Gene: CoveyB_82 Start: 53467, Stop: 53643, Start Num: 22

Candidate Starts for CoveyB_82:

(7, 53332), (Start: 22 @53467 has 8 MA's),

Gene: DigitDog_88 Start: 65196, Stop: 64957, Start Num: 47
Candidate Starts for DigitDog_88:
(30, 65397), (31, 65364), (35, 65328), (41, 65286), (Start: 47 @65196 has 9 MA's), (60, 65085), (62, 65067),

Gene: Donny_86 Start: 64530, Stop: 64288, Start Num: 47
Candidate Starts for Donny_86:
(30, 64731), (31, 64698), (35, 64662), (44, 64593), (Start: 47 @64530 has 9 MA's), (53, 64461), (55, 64449), (57, 64434), (62, 64401),

Gene: EastView9101_85 Start: 64441, Stop: 64199, Start Num: 47
Candidate Starts for EastView9101_85:
(30, 64642), (31, 64609), (35, 64573), (44, 64504), (Start: 47 @64441 has 9 MA's), (53, 64372), (55, 64360), (57, 64345), (62, 64312), (63, 64306),

Gene: Evamon_81 Start: 53374, Stop: 53550, Start Num: 22
Candidate Starts for Evamon_81:
(Start: 22 @53374 has 8 MA's),

Gene: Fireball_84 Start: 53836, Stop: 54012, Start Num: 19
Candidate Starts for Fireball_84:
(Start: 19 @53836 has 3 MA's),

Gene: Frederick_88 Start: 66084, Stop: 65941, Start Num: 27
Candidate Starts for Frederick_88:
(Start: 20 @66111 has 3 MA's), (Start: 27 @66084 has 9 MA's), (36, 65985), (37, 65982), (39, 65961),

Gene: Funsized_86 Start: 67570, Stop: 67346, Start Num: 47
Candidate Starts for Funsized_86:
(5, 68083), (6, 67912), (30, 67705), (31, 67672), (Start: 46 @67573 has 1 MA's), (Start: 47 @67570 has 9 MA's), (49, 67540), (51, 67534), (56, 67477), (65, 67423), (67, 67408), (70, 67390), (75, 67363),

Gene: Halo3_79 Start: 53805, Stop: 53981, Start Num: 22
Candidate Starts for Halo3_79:
(7, 53670), (Start: 22 @53805 has 8 MA's),

Gene: Heath_80 Start: 64111, Stop: 63941, Start Num: 20
Candidate Starts for Heath_80:
(Start: 20 @64111 has 3 MA's), (Start: 27 @64084 has 9 MA's), (36, 63985), (37, 63982), (39, 63961),

Gene: Hosp_084 Start: 63115, Stop: 62909, Start Num: 18
Candidate Starts for Hosp_084:
(12, 63190), (13, 63184), (Start: 18 @63115 has 1 MA's), (40, 62941),

Gene: Imvubu_90 Start: 65577, Stop: 65344, Start Num: 47
Candidate Starts for Imvubu_90:
(31, 65679), (Start: 47 @65577 has 9 MA's), (49, 65547), (54, 65496), (61, 65448), (72, 65379),

Gene: Indlovu_85 Start: 66174, Stop: 65995, Start Num: 45
Candidate Starts for Indlovu_85:
(Start: 45 @66174 has 3 MA's), (66, 66054),

Gene: JAMaL_86 Start: 65643, Stop: 65500, Start Num: 27

Candidate Starts for JAMaL_86:

(10, 65790), (11, 65775), (14, 65730), (Start: 27 @65643 has 9 MA's), (32, 65580), (36, 65544), (37, 65541), (39, 65520),

Gene: JaguarMi_81 Start: 66176, Stop: 66006, Start Num: 20

Candidate Starts for JaguarMi_81:

(Start: 20 @66176 has 3 MA's), (Start: 27 @66149 has 9 MA's), (32, 66086), (36, 66050), (37, 66047), (39, 66026),

Gene: Jolie1_086 Start: 65142, Stop: 64936, Start Num: 18

Candidate Starts for Jolie1_086:

(12, 65217), (13, 65211), (Start: 18 @65142 has 1 MA's), (40, 64968),

Gene: KarasumaRum_84 Start: 64594, Stop: 64355, Start Num: 47

Candidate Starts for KarasumaRum_84:

(30, 64690), (35, 64621), (Start: 47 @64594 has 9 MA's), (60, 64483), (62, 64465),

Gene: KayaCho_84 Start: 65033, Stop: 64827, Start Num: 18

Candidate Starts for KayaCho_84:

(12, 65108), (13, 65102), (Start: 18 @65033 has 1 MA's), (32, 64928), (40, 64859),

Gene: Knocker_85 Start: 66543, Stop: 66316, Start Num: 38

Candidate Starts for Knocker_85:

(15, 66699), (31, 66585), (33, 66570), (Start: 38 @66543 has 1 MA's), (48, 66474), (62, 66402), (68, 66363), (69, 66360), (73, 66345), (75, 66333), (76, 66330),

Gene: LilMcDreamy_85 Start: 64982, Stop: 64734, Start Num: 47

Candidate Starts for LilMcDreamy_85:

(31, 65042), (Start: 47 @64982 has 9 MA's), (51, 64946), (54, 64901), (63, 64844), (74, 64772), (76, 64748),

Gene: Lolalove_88 Start: 66142, Stop: 65972, Start Num: 20

Candidate Starts for Lolalove_88:

(Start: 20 @66142 has 3 MA's), (Start: 27 @66115 has 9 MA's), (36, 66016), (37, 66013), (39, 65992),

Gene: Mudslide_87 Start: 66345, Stop: 66202, Start Num: 27

Candidate Starts for Mudslide_87:

(Start: 20 @66372 has 3 MA's), (Start: 27 @66345 has 9 MA's), (36, 66246), (37, 66243), (39, 66222),

Gene: Mutzi_79 Start: 53940, Stop: 54116, Start Num: 22

Candidate Starts for Mutzi_79:

(Start: 22 @53940 has 8 MA's),

Gene: Mysterious_87 Start: 64739, Stop: 64503, Start Num: 47

Candidate Starts for Mysterious_87:

(30, 64835), (Start: 47 @64739 has 9 MA's), (59, 64637), (60, 64628), (65, 64595), (75, 64520),

Gene: Nangang_87 Start: 65197, Stop: 64958, Start Num: 47

Candidate Starts for Nangang_87:

(30, 65293), (35, 65224), (Start: 47 @65197 has 9 MA's), (60, 65086), (62, 65068),

Gene: Nehemiah_85 Start: 64619, Stop: 64383, Start Num: 47

Candidate Starts for Nehemiah_85:

(30, 64715), (Start: 47 @64619 has 9 MA's), (59, 64517), (60, 64508), (65, 64475), (75, 64400),

Gene: Nubi_83 Start: 53251, Stop: 53427, Start Num: 19

Candidate Starts for Nubi_83:

(Start: 19 @53251 has 3 MA's),

Gene: PenguinLover67_85 Start: 64569, Stop: 64360, Start Num: 45

Candidate Starts for PenguinLover67_85:

(1, 65436), (4, 65109), (21, 64743), (Start: 45 @64569 has 3 MA's), (52, 64527), (58, 64467), (66, 64416), (76, 64374),

Gene: Phelemich_83 Start: 64664, Stop: 64428, Start Num: 47

Candidate Starts for Phelemich_83:

(30, 64760), (Start: 47 @64664 has 9 MA's), (55, 64583), (59, 64562), (65, 64520), (76, 64442),

Gene: Prince_86 Start: 66212, Stop: 66069, Start Num: 27

Candidate Starts for Prince_86:

(Start: 20 @66239 has 3 MA's), (Start: 27 @66212 has 9 MA's), (32, 66149), (36, 66113), (37, 66110), (39, 66089),

Gene: Quesadilla_87 Start: 65727, Stop: 65512, Start Num: 42

Candidate Starts for Quesadilla_87:

(Start: 42 @65727 has 1 MA's),

Gene: Reprobate_85 Start: 64669, Stop: 64433, Start Num: 47

Candidate Starts for Reprobate_85:

(30, 64765), (Start: 47 @64669 has 9 MA's), (55, 64588), (59, 64567), (65, 64525), (76, 64447),

Gene: Rich_83 Start: 65123, Stop: 64890, Start Num: 43

Candidate Starts for Rich_83:

(30, 65171), (31, 65138), (Start: 43 @65123 has 3 MA's), (51, 65090), (76, 64904),

Gene: Rinkes_83 Start: 65423, Stop: 65226, Start Num: 46

Candidate Starts for Rinkes_83:

(30, 65543), (31, 65510), (Start: 46 @65423 has 1 MA's), (54, 65348), (55, 65345), (56, 65336), (64, 65297), (69, 65270), (71, 65261), (75, 65243),

Gene: Rita130_85 Start: 64670, Stop: 64428, Start Num: 47

Candidate Starts for Rita130_85:

(30, 64871), (31, 64838), (35, 64802), (44, 64733), (Start: 47 @64670 has 9 MA's), (53, 64601), (55, 64589), (57, 64574), (62, 64541),

Gene: Salvador_81 Start: 53372, Stop: 53548, Start Num: 22

Candidate Starts for Salvador_81:

(Start: 22 @53372 has 8 MA's),

Gene: Serendipitous_86 Start: 64542, Stop: 64303, Start Num: 43

Candidate Starts for Serendipitous_86:

(30, 64590), (31, 64557), (Start: 43 @64542 has 3 MA's), (50, 64512), (55, 64461), (57, 64446), (60, 64431), (62, 64413), (63, 64407), (75, 64320),

Gene: Shenyu_87 Start: 65195, Stop: 64974, Start Num: 47

Candidate Starts for Shenyu_87:

(30, 65291), (35, 65222), (Start: 47 @65195 has 9 MA's), (60, 65084), (62, 65066),

Gene: SirJeffery_84 Start: 64480, Stop: 64238, Start Num: 47

Candidate Starts for SirJeffery_84:

(30, 64681), (31, 64648), (35, 64612), (44, 64543), (Start: 47 @64480 has 9 MA's), (53, 64411), (55, 64399), (57, 64384), (62, 64351),

Gene: SmokingBunny_82 Start: 54368, Stop: 54544, Start Num: 22

Candidate Starts for SmokingBunny_82:

(Start: 22 @54368 has 8 MA's),

Gene: StinkyVeggy_84 Start: 64594, Stop: 64355, Start Num: 47

Candidate Starts for StinkyVeggy_84:

(30, 64690), (35, 64621), (Start: 47 @64594 has 9 MA's), (60, 64483), (62, 64465),

Gene: Suigeneris_87 Start: 64918, Stop: 64676, Start Num: 47

Candidate Starts for Suigeneris_87:

(30, 65119), (31, 65086), (35, 65050), (44, 64981), (Start: 47 @64918 has 9 MA's), (53, 64849), (55, 64837), (57, 64822), (62, 64789),

Gene: TillyBobJoe_79 Start: 53254, Stop: 53430, Start Num: 19

Candidate Starts for TillyBobJoe_79:

(Start: 19 @53254 has 3 MA's),

Gene: Togo_81 Start: 54368, Stop: 54544, Start Num: 22

Candidate Starts for Togo_81:

(Start: 22 @54368 has 8 MA's),

Gene: Vincenzo_87 Start: 66981, Stop: 66835, Start Num: 26

Candidate Starts for Vincenzo_87:

(25, 66990), (Start: 26 @66981 has 1 MA's), (Start: 27 @66978 has 9 MA's), (37, 66876), (39, 66855),

Gene: VioletZ_89 Start: 66302, Stop: 66159, Start Num: 27

Candidate Starts for VioletZ_89:

(Start: 20 @66329 has 3 MA's), (Start: 27 @66302 has 9 MA's), (32, 66239), (36, 66203), (37, 66200), (39, 66179),