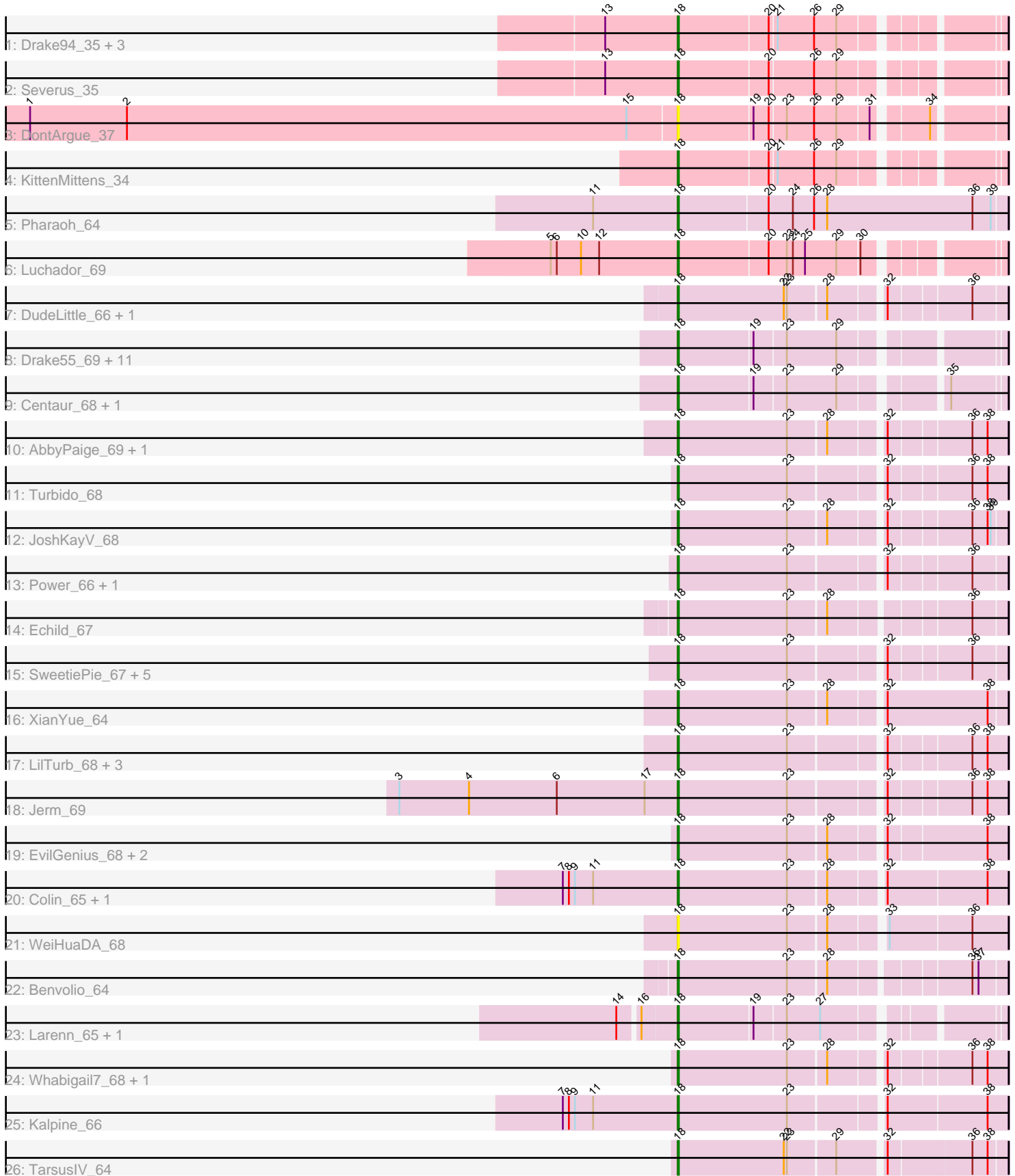


Pham 205186



Note: Tracks are now grouped by subcluster and scaled. Switching in subcluster is indicated by changes in track color. Track scale is now set by default to display the region 30 bp upstream of start 1 to 30 bp downstream of the last possible start. If this default region is judged to be packed too tightly with annotated starts, the track will be further scaled to only show that region of the ORF with annotated starts. This action will be indicated by adding "Zoomed" to the title. For starts, yellow indicates the location of called starts comprised solely of Glimmer/GeneMark auto-annotations, green indicates the location of called starts with at least 1 manual gene annotation.

Pham 205186 Report

This analysis was run 02/22/25 on database version 588.

Pham number 205186 has 57 members, 6 are drafts.

Phages represented in each track:

- Track 1 : Drake94_35, Poompha_36, PeaceMeal1_35, Trike_34
- Track 2 : Severus_35
- Track 3 : DontArgue_37
- Track 4 : KittenMittens_34
- Track 5 : Pharaoh_64
- Track 6 : Luchador_69
- Track 7 : DudeLittle_66, Dalmatian_68
- Track 8 : Drake55_69, Piro94_67, MiculUcigas_67, WideWale_68, Equemioh13_67, Baehexic_66, Sknot_67, NaSiaTalie_67, Updawg_68, Gratitude_65, Flare16_67, HarryHoudini_68
- Track 9 : Centaur_68, Terrific_68
- Track 10 : AbbyPaige_69, Agape74_69
- Track 11 : Turbido_68
- Track 12 : JoshKayV_68
- Track 13 : Power_66, Crucio_67
- Track 14 : Echild_67
- Track 15 : SweetiePie_67, Georgie2_68, FiringLine_67, SnapTap_67, QueenBeesly_67, SemperFi_68
- Track 16 : XianYue_64
- Track 17 : LilTurb_68, Buggy_69, Leviathan_69, Dignity_69
- Track 18 : Jerm_69
- Track 19 : EvilGenius_68, ChipMunk_69, KingCyrus_68
- Track 20 : Colin_65, Trixie_65
- Track 21 : WeiHuaDA_68
- Track 22 : Benvolio_64
- Track 23 : Larenn_65, Malec_66
- Track 24 : Whabigail7_68, Smeagan_70
- Track 25 : Kalpine_66
- Track 26 : TarsusIV_64

Summary of Final Annotations (See graph section above for start numbers):

The start number called the most often in the published annotations is 18, it was called in 51 of the 51 non-draft genes in the pham.

Genes that call this "Most Annotated" start:

- AbbyPaige_69, Agape74_69, Baehexic_66, Benvolio_64, Buggy_69, Centaur_68, ChipMunk_69, Colin_65, Crucio_67, Dalmatian_68, Dignity_69, DontArgue_37, Drake55_69, Drake94_35, DudeLittle_66, Echild_67, Equemioh13_67, EvilGenius_68, FiringLine_67, Flare16_67, Georgie2_68, Gratitude_65, HarryHoudini_68, Jerm_69, JoshKayV_68, Kalpine_66, KingCyrus_68, KittenMittens_34, Larenn_65, Leviathan_69, LilTurb_68, Luchador_69, Malec_66, MiculUcigas_67, NaSiaTalie_67, PeaceMeal1_35, Pharaoh_64, Piro94_67, Poompha_36, Power_66, QueenBeesly_67, SemperFi_68, Severus_35, Sknot_67, Smeagan_70, SnapTap_67, SweetiePie_67, TarsusIV_64, Terrific_68, Trike_34, Trixie_65, Turbido_68, Updawg_68, WeiHuaDA_68, Whabigail7_68, WideWale_68, XianYue_64,

Genes that have the "Most Annotated" start but do not call it:

-

Genes that do not have the "Most Annotated" start:

-

Summary by start number:

Start 18:

- Found in 57 of 57 (100.0%) of genes in pham
- Manual Annotations of this start: 51 of 51
- Called 100.0% of time when present
- Phage (with cluster) where this start called: AbbyPaige_69 (A2), Agape74_69 (A2), Baehexic_66 (A2), Benvolio_64 (A2), Buggy_69 (A2), Centaur_68 (A2), ChipMunk_69 (A2), Colin_65 (A2), Crucio_67 (A2), Dalmatian_68 (A2), Dignity_69 (A2), DontArgue_37 (A10), Drake55_69 (A2), Drake94_35 (A10), DudeLittle_66 (A2), Echild_67 (A2), Equemioh13_67 (A2), EvilGenius_68 (A2), FiringLine_67 (A2), Flare16_67 (A2), Georgie2_68 (A2), Gratitude_65 (A2), HarryHoudini_68 (A2), Jerm_69 (A2), JoshKayV_68 (A2), Kalpine_66 (A2), KingCyrus_68 (A2), KittenMittens_34 (A10), Larenn_65 (A2), Leviathan_69 (A2), LilTurb_68 (A2), Luchador_69 (A14), Malec_66 (A2), MiculUcigas_67 (A2), NaSiaTalie_67 (A2), PeaceMeal1_35 (A10), Pharaoh_64 (A12), Piro94_67 (A2), Poompha_36 (A10), Power_66 (A2), QueenBeesly_67 (A2), SemperFi_68 (A2), Severus_35 (A10), Sknot_67 (A2), Smeagan_70 (A2), SnapTap_67 (A2), SweetiePie_67 (A2), TarsusIV_64 (A2), Terrific_68 (A2), Trike_34 (A10), Trixie_65 (A2), Turbido_68 (A2), Updawg_68 (A2), WeiHuaDA_68 (A2), Whabigail7_68 (A2), WideWale_68 (A2), XianYue_64 (A2),

Summary by clusters:

There are 4 clusters represented in this pham: A14, A2, A10, A12,

Info for manual annotations of cluster A10:

- Start number 18 was manually annotated 6 times for cluster A10.

Info for manual annotations of cluster A12:

- Start number 18 was manually annotated 1 time for cluster A12.

Info for manual annotations of cluster A14:

- Start number 18 was manually annotated 1 time for cluster A14.

Info for manual annotations of cluster A2:

- Start number 18 was manually annotated 43 times for cluster A2.

Gene Information:

Gene: AbbyPaige_69 Start: 42100, Stop: 41798, Start Num: 18

Candidate Starts for AbbyPaige_69:

(Start: 18 @42100 has 51 MA's), (23, 41992), (28, 41956), (32, 41908), (36, 41833), (38, 41818),

Gene: Agape74_69 Start: 42094, Stop: 41792, Start Num: 18

Candidate Starts for Agape74_69:

(Start: 18 @42094 has 51 MA's), (23, 41986), (28, 41950), (32, 41902), (36, 41827), (38, 41812),

Gene: Baehexic_66 Start: 41584, Stop: 41297, Start Num: 18

Candidate Starts for Baehexic_66:

(Start: 18 @41584 has 51 MA's), (19, 41512), (23, 41482), (29, 41434),

Gene: Benvolio_64 Start: 41122, Stop: 40823, Start Num: 18

Candidate Starts for Benvolio_64:

(Start: 18 @41122 has 51 MA's), (23, 41014), (28, 40978), (36, 40855), (37, 40849),

Gene: Bugsy_69 Start: 42147, Stop: 41848, Start Num: 18

Candidate Starts for Bugsy_69:

(Start: 18 @42147 has 51 MA's), (23, 42039), (32, 41955), (36, 41880), (38, 41865),

Gene: Centaur_68 Start: 41799, Stop: 41512, Start Num: 18

Candidate Starts for Centaur_68:

(Start: 18 @41799 has 51 MA's), (19, 41727), (23, 41697), (29, 41649), (35, 41562),

Gene: ChipMunk_69 Start: 43378, Stop: 43073, Start Num: 18

Candidate Starts for ChipMunk_69:

(Start: 18 @43378 has 51 MA's), (23, 43270), (28, 43234), (32, 43186), (38, 43093),

Gene: Colin_65 Start: 41841, Stop: 41533, Start Num: 18

Candidate Starts for Colin_65:

(7, 41952), (8, 41946), (9, 41940), (11, 41922), (Start: 18 @41841 has 51 MA's), (23, 41733), (28, 41697), (32, 41649), (38, 41553),

Gene: Crucio_67 Start: 41766, Stop: 41467, Start Num: 18

Candidate Starts for Crucio_67:

(Start: 18 @41766 has 51 MA's), (23, 41658), (32, 41574), (36, 41499),

Gene: Dalmatian_68 Start: 41966, Stop: 41667, Start Num: 18

Candidate Starts for Dalmatian_68:

(Start: 18 @41966 has 51 MA's), (22, 41861), (23, 41858), (28, 41822), (32, 41774), (36, 41699),

Gene: Dignity_69 Start: 42185, Stop: 41886, Start Num: 18

Candidate Starts for Dignity_69:

(Start: 18 @42185 has 51 MA's), (23, 42077), (32, 41993), (36, 41918), (38, 41903),

Gene: DontArgue_37 Start: 27222, Stop: 26932, Start Num: 18
Candidate Starts for DontArgue_37:
(1, 27858), (2, 27762), (15, 27267), (Start: 18 @27222 has 51 MA's), (19, 27150), (20, 27135), (23, 27120), (26, 27093), (29, 27072), (31, 27042), (34, 26997),

Gene: Drake55_69 Start: 41900, Stop: 41613, Start Num: 18
Candidate Starts for Drake55_69:
(Start: 18 @41900 has 51 MA's), (19, 41828), (23, 41798), (29, 41750),

Gene: Drake94_35 Start: 27059, Stop: 26775, Start Num: 18
Candidate Starts for Drake94_35:
(13, 27128), (Start: 18 @27059 has 51 MA's), (20, 26972), (21, 26966), (26, 26930), (29, 26909),

Gene: DudeLittle_66 Start: 41732, Stop: 41433, Start Num: 18
Candidate Starts for DudeLittle_66:
(Start: 18 @41732 has 51 MA's), (22, 41627), (23, 41624), (28, 41588), (32, 41540), (36, 41465),

Gene: Echild_67 Start: 41146, Stop: 40847, Start Num: 18
Candidate Starts for Echild_67:
(Start: 18 @41146 has 51 MA's), (23, 41038), (28, 41002), (36, 40879),

Gene: Equemioh13_67 Start: 41704, Stop: 41417, Start Num: 18
Candidate Starts for Equemioh13_67:
(Start: 18 @41704 has 51 MA's), (19, 41632), (23, 41602), (29, 41554),

Gene: EvilGenius_68 Start: 43379, Stop: 43074, Start Num: 18
Candidate Starts for EvilGenius_68:
(Start: 18 @43379 has 51 MA's), (23, 43271), (28, 43235), (32, 43187), (38, 43094),

Gene: FiringLine_67 Start: 41747, Stop: 41448, Start Num: 18
Candidate Starts for FiringLine_67:
(Start: 18 @41747 has 51 MA's), (23, 41639), (32, 41555), (36, 41480),

Gene: Flare16_67 Start: 41460, Stop: 41173, Start Num: 18
Candidate Starts for Flare16_67:
(Start: 18 @41460 has 51 MA's), (19, 41388), (23, 41358), (29, 41310),

Gene: Georgie2_68 Start: 41792, Stop: 41493, Start Num: 18
Candidate Starts for Georgie2_68:
(Start: 18 @41792 has 51 MA's), (23, 41684), (32, 41600), (36, 41525),

Gene: Gratitude_65 Start: 41704, Stop: 41417, Start Num: 18
Candidate Starts for Gratitude_65:
(Start: 18 @41704 has 51 MA's), (19, 41632), (23, 41602), (29, 41554),

Gene: HarryHoudini_68 Start: 41901, Stop: 41614, Start Num: 18
Candidate Starts for HarryHoudini_68:
(Start: 18 @41901 has 51 MA's), (19, 41829), (23, 41799), (29, 41751),

Gene: Jerm_69 Start: 42166, Stop: 41864, Start Num: 18
Candidate Starts for Jerm_69:

(3, 42442), (4, 42373), (6, 42286), (17, 42199), (Start: 18 @42166 has 51 MA's), (23, 42058), (32, 41974), (36, 41899), (38, 41884),

Gene: JoshKayV_68 Start: 42218, Stop: 41919, Start Num: 18

Candidate Starts for JoshKayV_68:

(Start: 18 @42218 has 51 MA's), (23, 42110), (28, 42074), (32, 42026), (36, 41951), (38, 41936), (39, 41933),

Gene: Kalpine_66 Start: 42022, Stop: 41714, Start Num: 18

Candidate Starts for Kalpine_66:

(7, 42133), (8, 42127), (9, 42121), (11, 42103), (Start: 18 @42022 has 51 MA's), (23, 41914), (32, 41830), (38, 41734),

Gene: KingCyrus_68 Start: 43374, Stop: 43069, Start Num: 18

Candidate Starts for KingCyrus_68:

(Start: 18 @43374 has 51 MA's), (23, 43266), (28, 43230), (32, 43182), (38, 43089),

Gene: KittenMittens_34 Start: 27067, Stop: 26783, Start Num: 18

Candidate Starts for KittenMittens_34:

(Start: 18 @27067 has 51 MA's), (20, 26980), (21, 26974), (26, 26938), (29, 26917),

Gene: Larenn_65 Start: 41737, Stop: 41453, Start Num: 18

Candidate Starts for Larenn_65:

(14, 41785), (16, 41767), (Start: 18 @41737 has 51 MA's), (19, 41665), (23, 41635), (27, 41602),

Gene: Leviathan_69 Start: 42234, Stop: 41935, Start Num: 18

Candidate Starts for Leviathan_69:

(Start: 18 @42234 has 51 MA's), (23, 42126), (32, 42042), (36, 41967), (38, 41952),

Gene: LilTurb_68 Start: 42048, Stop: 41746, Start Num: 18

Candidate Starts for LilTurb_68:

(Start: 18 @42048 has 51 MA's), (23, 41940), (32, 41856), (36, 41781), (38, 41766),

Gene: Luchador_69 Start: 42331, Stop: 42044, Start Num: 18

Candidate Starts for Luchador_69:

(5, 42454), (6, 42448), (10, 42424), (12, 42406), (Start: 18 @42331 has 51 MA's), (20, 42244), (23, 42226), (24, 42220), (25, 42208), (29, 42178), (30, 42157),

Gene: Malec_66 Start: 42304, Stop: 42020, Start Num: 18

Candidate Starts for Malec_66:

(14, 42352), (16, 42334), (Start: 18 @42304 has 51 MA's), (19, 42232), (23, 42202), (27, 42169),

Gene: MiculUcigas_67 Start: 41363, Stop: 41076, Start Num: 18

Candidate Starts for MiculUcigas_67:

(Start: 18 @41363 has 51 MA's), (19, 41291), (23, 41261), (29, 41213),

Gene: NaSiaTalie_67 Start: 41457, Stop: 41170, Start Num: 18

Candidate Starts for NaSiaTalie_67:

(Start: 18 @41457 has 51 MA's), (19, 41385), (23, 41355), (29, 41307),

Gene: PeaceMeal1_35 Start: 27068, Stop: 26784, Start Num: 18

Candidate Starts for PeaceMeal1_35:

(13, 27137), (Start: 18 @27068 has 51 MA's), (20, 26981), (21, 26975), (26, 26939), (29, 26918),

Gene: Pharaoh_64 Start: 41329, Stop: 41009, Start Num: 18
Candidate Starts for Pharaoh_64:
(11, 41410), (Start: 18 @41329 has 51 MA's), (20, 41242), (24, 41218), (26, 41197), (28, 41185), (36, 41041), (39, 41023),

Gene: Piro94_67 Start: 41808, Stop: 41521, Start Num: 18
Candidate Starts for Piro94_67:
(Start: 18 @41808 has 51 MA's), (19, 41736), (23, 41706), (29, 41658),

Gene: Poompha_36 Start: 27066, Stop: 26782, Start Num: 18
Candidate Starts for Poompha_36:
(13, 27135), (Start: 18 @27066 has 51 MA's), (20, 26979), (21, 26973), (26, 26937), (29, 26916),

Gene: Power_66 Start: 41791, Stop: 41492, Start Num: 18
Candidate Starts for Power_66:
(Start: 18 @41791 has 51 MA's), (23, 41683), (32, 41599), (36, 41524),

Gene: QueenBeesly_67 Start: 41747, Stop: 41448, Start Num: 18
Candidate Starts for QueenBeesly_67:
(Start: 18 @41747 has 51 MA's), (23, 41639), (32, 41555), (36, 41480),

Gene: SemperFi_68 Start: 42015, Stop: 41716, Start Num: 18
Candidate Starts for SemperFi_68:
(Start: 18 @42015 has 51 MA's), (23, 41907), (32, 41823), (36, 41748),

Gene: Severus_35 Start: 27066, Stop: 26782, Start Num: 18
Candidate Starts for Severus_35:
(13, 27135), (Start: 18 @27066 has 51 MA's), (20, 26979), (26, 26937), (29, 26916),

Gene: Sknot_67 Start: 41460, Stop: 41173, Start Num: 18
Candidate Starts for Sknot_67:
(Start: 18 @41460 has 51 MA's), (19, 41388), (23, 41358), (29, 41310),

Gene: Smeagan_70 Start: 42325, Stop: 42023, Start Num: 18
Candidate Starts for Smeagan_70:
(Start: 18 @42325 has 51 MA's), (23, 42217), (28, 42181), (32, 42133), (36, 42058), (38, 42043),

Gene: SnapTap_67 Start: 41826, Stop: 41527, Start Num: 18
Candidate Starts for SnapTap_67:
(Start: 18 @41826 has 51 MA's), (23, 41718), (32, 41634), (36, 41559),

Gene: SweetiePie_67 Start: 41958, Stop: 41659, Start Num: 18
Candidate Starts for SweetiePie_67:
(Start: 18 @41958 has 51 MA's), (23, 41850), (32, 41766), (36, 41691),

Gene: TarsusIV_64 Start: 41427, Stop: 41122, Start Num: 18
Candidate Starts for TarsusIV_64:
(Start: 18 @41427 has 51 MA's), (22, 41322), (23, 41319), (29, 41274), (32, 41232), (36, 41154), (38, 41139),

Gene: Terrific_68 Start: 41814, Stop: 41527, Start Num: 18
Candidate Starts for Terrific_68:

(Start: 18 @41814 has 51 MA's), (19, 41742), (23, 41712), (29, 41664), (35, 41577),

Gene: Trike_34 Start: 26899, Stop: 26615, Start Num: 18

Candidate Starts for Trike_34:

(13, 26968), (Start: 18 @26899 has 51 MA's), (20, 26812), (21, 26806), (26, 26770), (29, 26749),

Gene: Trixie_65 Start: 41657, Stop: 41343, Start Num: 18

Candidate Starts for Trixie_65:

(7, 41768), (8, 41762), (9, 41756), (11, 41738), (Start: 18 @41657 has 51 MA's), (23, 41549), (28, 41513), (32, 41459), (38, 41363),

Gene: Turbido_68 Start: 42044, Stop: 41742, Start Num: 18

Candidate Starts for Turbido_68:

(Start: 18 @42044 has 51 MA's), (23, 41936), (32, 41852), (36, 41777), (38, 41762),

Gene: Updawg_68 Start: 41704, Stop: 41417, Start Num: 18

Candidate Starts for Updawg_68:

(Start: 18 @41704 has 51 MA's), (19, 41632), (23, 41602), (29, 41554),

Gene: WeiHuaDA_68 Start: 42635, Stop: 42330, Start Num: 18

Candidate Starts for WeiHuaDA_68:

(Start: 18 @42635 has 51 MA's), (23, 42527), (28, 42491), (33, 42443), (36, 42365),

Gene: Whabigail7_68 Start: 42044, Stop: 41742, Start Num: 18

Candidate Starts for Whabigail7_68:

(Start: 18 @42044 has 51 MA's), (23, 41936), (28, 41900), (32, 41852), (36, 41777), (38, 41762),

Gene: WideWale_68 Start: 41704, Stop: 41417, Start Num: 18

Candidate Starts for WideWale_68:

(Start: 18 @41704 has 51 MA's), (19, 41632), (23, 41602), (29, 41554),

Gene: XianYue_64 Start: 41016, Stop: 40708, Start Num: 18

Candidate Starts for XianYue_64:

(Start: 18 @41016 has 51 MA's), (23, 40908), (28, 40872), (32, 40824), (38, 40725),