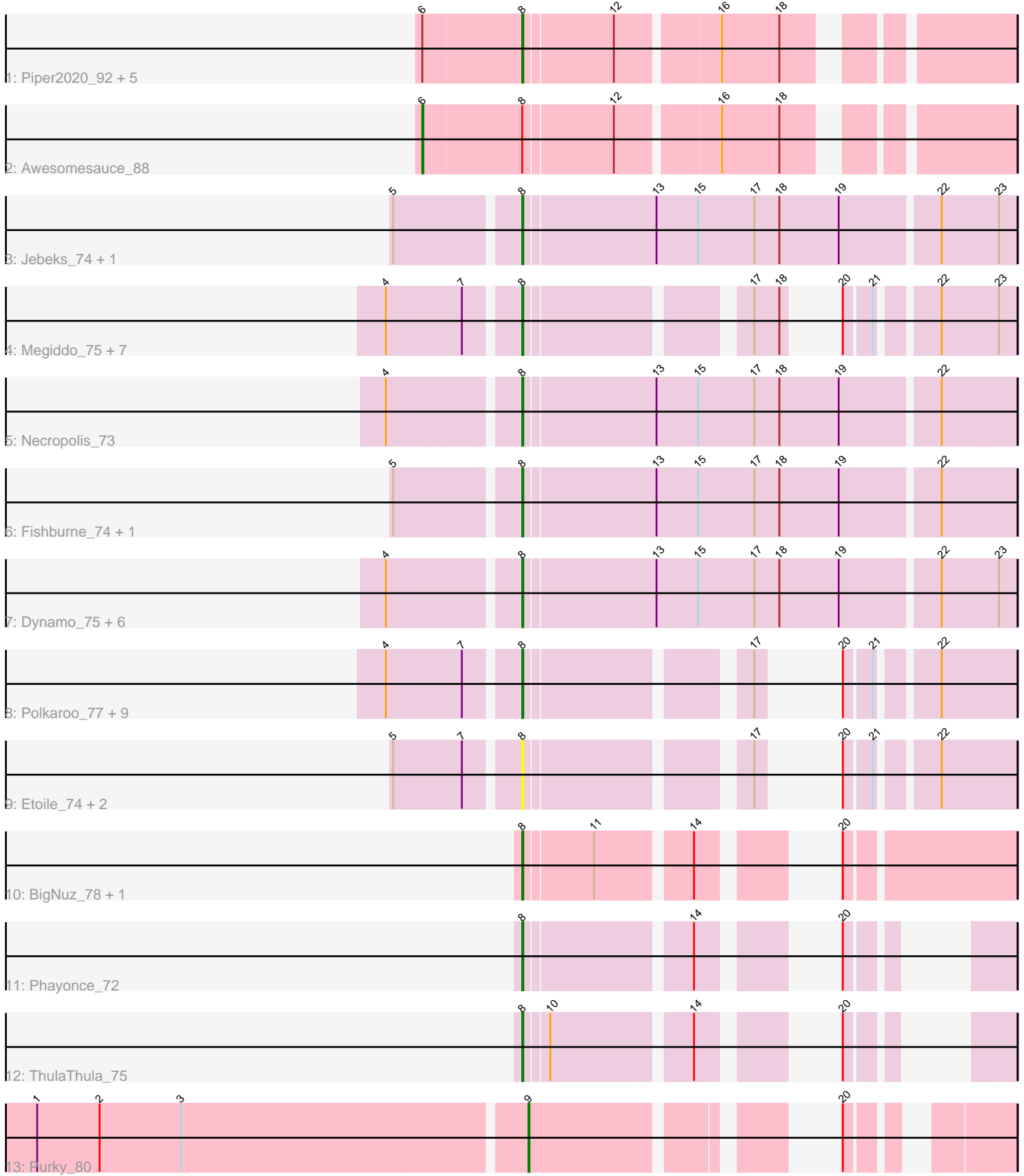


Pham 205272



Note: Tracks are now grouped by subcluster and scaled. Switching in subcluster is indicated by changes in track color. Track scale is now set by default to display the region 30 bp upstream of start 1 to 30 bp downstream of the last possible start. If this default region is judged to be packed too tightly with annotated starts, the track will be further scaled to only show that region of the ORF with annotated starts. This action will be indicated by adding "Zoomed" to the title. For starts, yellow indicates the location of called starts comprised solely of Glimmer/GeneMark auto-annotations, green indicates the location of called starts with at least 1 manual gene annotation.

Pham 205272 Report

This analysis was run 02/22/25 on database version 588.

Pham number 205272 has 45 members, 7 are drafts.

Phages represented in each track:

- Track 1 : Piper2020_92, Aloeri_91, ChickenDinner_91, TootsiePop_87, Misha28_87, DocMcStuffins_85
- Track 2 : Awesomesauce_88
- Track 3 : Jebeks_74, Langerak_74
- Track 4 : Megiddo_75, KilKor_76, Phalm_76, Gavriela_74, StressBall_75, CactusJack_76, Glaske_75, Willsammy_77
- Track 5 : Necropolis_73
- Track 6 : Fishburne_74, Zilizebeth_80
- Track 7 : Dynamo_75, Bogie_78, HUHilltop_78, Shipwreck_78, Phineas_75, Pygmy_79, GreaseLightnin_77
- Track 8 : Polkaroo_77, Donovan_75, Mangethe_78, Juniormint_71, Phegasus_78, Techage_76, Majeke_78, Arib1_75, Bartholomew_74, Venti_76
- Track 9 : Etoile_74, Vidya_73, Kari_74
- Track 10 : BigNuz_78, Nazo_79
- Track 11 : Phayonce_72
- Track 12 : ThulaThula_75
- Track 13 : Purky_80

Summary of Final Annotations (See graph section above for start numbers):

The start number called the most often in the published annotations is 8, it was called in 36 of the 38 non-draft genes in the pham.

Genes that call this "Most Annotated" start:

- Aloeri_91, Arib1_75, Bartholomew_74, BigNuz_78, Bogie_78, CactusJack_76, ChickenDinner_91, DocMcStuffins_85, Donovan_75, Dynamo_75, Etoile_74, Fishburne_74, Gavriela_74, Glaske_75, GreaseLightnin_77, HUHilltop_78, Jebeks_74, Juniormint_71, Kari_74, KilKor_76, Langerak_74, Majeke_78, Mangethe_78, Megiddo_75, Misha28_87, Nazo_79, Necropolis_73, Phalm_76, Phayonce_72, Phegasus_78, Phineas_75, Piper2020_92, Polkaroo_77, Pygmy_79, Shipwreck_78, StressBall_75, Techage_76, ThulaThula_75, TootsiePop_87, Venti_76, Vidya_73, Willsammy_77, Zilizebeth_80,

Genes that have the "Most Annotated" start but do not call it:

- Awesomesauce_88,

Genes that do not have the "Most Annotated" start:

- Purky_80,

Summary by start number:

Start 6:

- Found in 7 of 45 (15.6%) of genes in pham
- Manual Annotations of this start: 1 of 38
- Called 14.3% of time when present
- Phage (with cluster) where this start called: Awesomesauce_88 (F1),

Start 8:

- Found in 44 of 45 (97.8%) of genes in pham
- Manual Annotations of this start: 36 of 38
- Called 97.7% of time when present
- Phage (with cluster) where this start called: Aloeri_91 (F1), Arib1_75 (P1), Bartholomew_74 (P1), BigNuz_78 (P4), Bogie_78 (P1), CactusJack_76 (P1), ChickenDinner_91 (F1), DocMcStuffins_85 (F1), Donovan_75 (P1), Dynamo_75 (P1), Etoile_74 (P1), Fishburne_74 (P1), Gavriela_74 (P1), Glaske_75 (P1), GreaseLightnin_77 (P1), HUHilltop_78 (P1), Jebeks_74 (P1), Juniormint_71 (P1), Kari_74 (P1), KilKor_76 (P1), Langerak_74 (P1), Majeke_78 (P1), Mangethe_78 (P1), Megiddo_75 (P1), Misha28_87 (F1), Nazo_79 (P4), Necropolis_73 (P1), Phalm_76 (P1), Phayonce_72 (P5), Phegasus_78 (P1), Phineas_75 (P1), Piper2020_92 (F1), Polkaroo_77 (P1), Pygmy_79 (P1), Shipwreck_78 (P1), StressBall_75 (P1), Techage_76 (P1), ThulaThula_75 (P5), TootsiePop_87 (F1), Venti_76 (P1), Vidya_73 (P1), Willsammy_77 (P1), Zilizebeth_80 (P1),

Start 9:

- Found in 1 of 45 (2.2%) of genes in pham
- Manual Annotations of this start: 1 of 38
- Called 100.0% of time when present
- Phage (with cluster) where this start called: Purky_80 (P6),

Summary by clusters:

There are 5 clusters represented in this pham: F1, P1, P6, P4, P5,

Info for manual annotations of cluster F1:

- Start number 6 was manually annotated 1 time for cluster F1.
- Start number 8 was manually annotated 4 times for cluster F1.

Info for manual annotations of cluster P1:

- Start number 8 was manually annotated 28 times for cluster P1.

Info for manual annotations of cluster P4:

- Start number 8 was manually annotated 2 times for cluster P4.

Info for manual annotations of cluster P5:

- Start number 8 was manually annotated 2 times for cluster P5.

Info for manual annotations of cluster P6:

- Start number 9 was manually annotated 1 time for cluster P6.

Gene Information:

Gene: Aloeri_91 Start: 52965, Stop: 53369, Start Num: 8

Candidate Starts for Aloeri_91:

(Start: 6 @52872 has 1 MA's), (Start: 8 @52965 has 36 MA's), (12, 53046), (16, 53136), (18, 53190),

Gene: Arib1_75 Start: 45198, Stop: 45536, Start Num: 8

Candidate Starts for Arib1_75:

(4, 45081), (7, 45153), (Start: 8 @45198 has 36 MA's), (17, 45381), (20, 45393), (21, 45417), (22, 45465),

Gene: Awesomesauce_88 Start: 53108, Stop: 53605, Start Num: 6

Candidate Starts for Awesomesauce_88:

(Start: 6 @53108 has 1 MA's), (Start: 8 @53201 has 36 MA's), (12, 53282), (16, 53372), (18, 53426),

Gene: Bartholomew_74 Start: 44950, Stop: 45288, Start Num: 8

Candidate Starts for Bartholomew_74:

(4, 44833), (7, 44905), (Start: 8 @44950 has 36 MA's), (17, 45133), (20, 45145), (21, 45169), (22, 45217),

Gene: BigNuz_78 Start: 47050, Stop: 47418, Start Num: 8

Candidate Starts for BigNuz_78:

(Start: 8 @47050 has 36 MA's), (11, 47113), (14, 47194), (20, 47266),

Gene: Bogie_78 Start: 46985, Stop: 47443, Start Num: 8

Candidate Starts for Bogie_78:

(4, 46868), (Start: 8 @46985 has 36 MA's), (13, 47108), (15, 47147), (17, 47201), (18, 47225), (19, 47282), (22, 47372), (23, 47426),

Gene: CactusJack_76 Start: 46666, Stop: 47025, Start Num: 8

Candidate Starts for CactusJack_76:

(4, 46549), (7, 46621), (Start: 8 @46666 has 36 MA's), (17, 46849), (18, 46873), (20, 46882), (21, 46906), (22, 46954), (23, 47008),

Gene: ChickenDinner_91 Start: 52965, Stop: 53369, Start Num: 8

Candidate Starts for ChickenDinner_91:

(Start: 6 @52872 has 1 MA's), (Start: 8 @52965 has 36 MA's), (12, 53046), (16, 53136), (18, 53190),

Gene: DocMcStuffins_85 Start: 54595, Stop: 54999, Start Num: 8

Candidate Starts for DocMcStuffins_85:

(Start: 6 @54502 has 1 MA's), (Start: 8 @54595 has 36 MA's), (12, 54676), (16, 54766), (18, 54820),

Gene: Donovan_75 Start: 45628, Stop: 45966, Start Num: 8

Candidate Starts for Donovan_75:

(4, 45511), (7, 45583), (Start: 8 @45628 has 36 MA's), (17, 45811), (20, 45823), (21, 45847), (22, 45895),

Gene: Dynamo_75 Start: 45019, Stop: 45477, Start Num: 8

Candidate Starts for Dynamo_75:

(4, 44902), (Start: 8 @45019 has 36 MA's), (13, 45142), (15, 45181), (17, 45235), (18, 45259), (19, 45316), (22, 45406), (23, 45460),

Gene: Etoile_74 Start: 45993, Stop: 46331, Start Num: 8

Candidate Starts for Etoile_74:

(5, 45882), (7, 45948), (Start: 8 @45993 has 36 MA's), (17, 46176), (20, 46188), (21, 46212), (22, 46260),

Gene: Fishburne_74 Start: 45455, Stop: 45913, Start Num: 8

Candidate Starts for Fishburne_74:

(5, 45344), (Start: 8 @45455 has 36 MA's), (13, 45578), (15, 45617), (17, 45671), (18, 45695), (19, 45752), (22, 45842),

Gene: Gavriela_74 Start: 46360, Stop: 46719, Start Num: 8

Candidate Starts for Gavriela_74:

(4, 46243), (7, 46315), (Start: 8 @46360 has 36 MA's), (17, 46543), (18, 46567), (20, 46576), (21, 46600), (22, 46648), (23, 46702),

Gene: Glaske_75 Start: 46666, Stop: 47025, Start Num: 8

Candidate Starts for Glaske_75:

(4, 46549), (7, 46621), (Start: 8 @46666 has 36 MA's), (17, 46849), (18, 46873), (20, 46882), (21, 46906), (22, 46954), (23, 47008),

Gene: GreaseLightnin_77 Start: 46770, Stop: 47228, Start Num: 8

Candidate Starts for GreaseLightnin_77:

(4, 46653), (Start: 8 @46770 has 36 MA's), (13, 46893), (15, 46932), (17, 46986), (18, 47010), (19, 47067), (22, 47157), (23, 47211),

Gene: HUHilltop_78 Start: 45242, Stop: 45700, Start Num: 8

Candidate Starts for HUHilltop_78:

(4, 45125), (Start: 8 @45242 has 36 MA's), (13, 45365), (15, 45404), (17, 45458), (18, 45482), (19, 45539), (22, 45629), (23, 45683),

Gene: Jebeks_74 Start: 43926, Stop: 44384, Start Num: 8

Candidate Starts for Jebeks_74:

(5, 43815), (Start: 8 @43926 has 36 MA's), (13, 44049), (15, 44088), (17, 44142), (18, 44166), (19, 44223), (22, 44313), (23, 44367),

Gene: Juniormint_71 Start: 44041, Stop: 44379, Start Num: 8

Candidate Starts for Juniormint_71:

(4, 43924), (7, 43996), (Start: 8 @44041 has 36 MA's), (17, 44224), (20, 44236), (21, 44260), (22, 44308),

Gene: Kari_74 Start: 45989, Stop: 46327, Start Num: 8

Candidate Starts for Kari_74:

(5, 45878), (7, 45944), (Start: 8 @45989 has 36 MA's), (17, 46172), (20, 46184), (21, 46208), (22, 46256),

Gene: KilKor_76 Start: 47359, Stop: 47718, Start Num: 8

Candidate Starts for KilKor_76:

(4, 47242), (7, 47314), (Start: 8 @47359 has 36 MA's), (17, 47542), (18, 47566), (20, 47575), (21, 47599), (22, 47647), (23, 47701),

Gene: Langerak_74 Start: 45433, Stop: 45891, Start Num: 8
Candidate Starts for Langerak_74:
(5, 45322), (Start: 8 @45433 has 36 MA's), (13, 45556), (15, 45595), (17, 45649), (18, 45673), (19, 45730), (22, 45820), (23, 45874),

Gene: Majeke_78 Start: 46077, Stop: 46415, Start Num: 8
Candidate Starts for Majeke_78:
(4, 45960), (7, 46032), (Start: 8 @46077 has 36 MA's), (17, 46260), (20, 46272), (21, 46296), (22, 46344),

Gene: Mangethe_78 Start: 46077, Stop: 46415, Start Num: 8
Candidate Starts for Mangethe_78:
(4, 45960), (7, 46032), (Start: 8 @46077 has 36 MA's), (17, 46260), (20, 46272), (21, 46296), (22, 46344),

Gene: Megiddo_75 Start: 47227, Stop: 47586, Start Num: 8
Candidate Starts for Megiddo_75:
(4, 47110), (7, 47182), (Start: 8 @47227 has 36 MA's), (17, 47410), (18, 47434), (20, 47443), (21, 47467), (22, 47515), (23, 47569),

Gene: Misha28_87 Start: 53900, Stop: 54304, Start Num: 8
Candidate Starts for Misha28_87:
(Start: 6 @53807 has 1 MA's), (Start: 8 @53900 has 36 MA's), (12, 53981), (16, 54071), (18, 54125),

Gene: Nazo_79 Start: 46936, Stop: 47304, Start Num: 8
Candidate Starts for Nazo_79:
(Start: 8 @46936 has 36 MA's), (11, 46999), (14, 47080), (20, 47152),

Gene: Necropolis_73 Start: 44609, Stop: 45067, Start Num: 8
Candidate Starts for Necropolis_73:
(4, 44492), (Start: 8 @44609 has 36 MA's), (13, 44732), (15, 44771), (17, 44825), (18, 44849), (19, 44906), (22, 44996),

Gene: Phalm_76 Start: 46657, Stop: 47016, Start Num: 8
Candidate Starts for Phalm_76:
(4, 46540), (7, 46612), (Start: 8 @46657 has 36 MA's), (17, 46840), (18, 46864), (20, 46873), (21, 46897), (22, 46945), (23, 46999),

Gene: Phayonce_72 Start: 47098, Stop: 47397, Start Num: 8
Candidate Starts for Phayonce_72:
(Start: 8 @47098 has 36 MA's), (14, 47242), (20, 47314),

Gene: Phegasus_78 Start: 46044, Stop: 46382, Start Num: 8
Candidate Starts for Phegasus_78:
(4, 45927), (7, 45999), (Start: 8 @46044 has 36 MA's), (17, 46227), (20, 46239), (21, 46263), (22, 46311),

Gene: Phineas_75 Start: 45576, Stop: 46034, Start Num: 8
Candidate Starts for Phineas_75:
(4, 45459), (Start: 8 @45576 has 36 MA's), (13, 45699), (15, 45738), (17, 45792), (18, 45816), (19, 45873), (22, 45963), (23, 46017),

Gene: Piper2020_92 Start: 54148, Stop: 54552, Start Num: 8

Candidate Starts for Piper2020_92:

(Start: 6 @54055 has 1 MA's), (Start: 8 @54148 has 36 MA's), (12, 54229), (16, 54319), (18, 54373),

Gene: Polkaroo_77 Start: 47550, Stop: 47888, Start Num: 8

Candidate Starts for Polkaroo_77:

(4, 47433), (7, 47505), (Start: 8 @47550 has 36 MA's), (17, 47733), (20, 47745), (21, 47769), (22, 47817),

Gene: Purky_80 Start: 48824, Stop: 49156, Start Num: 9

Candidate Starts for Purky_80:

(1, 48365), (2, 48425), (3, 48503), (Start: 9 @48824 has 1 MA's), (20, 49037),

Gene: Pygmy_79 Start: 46958, Stop: 47416, Start Num: 8

Candidate Starts for Pygmy_79:

(4, 46841), (Start: 8 @46958 has 36 MA's), (13, 47081), (15, 47120), (17, 47174), (18, 47198), (19, 47255), (22, 47345), (23, 47399),

Gene: Shipwreck_78 Start: 47016, Stop: 47474, Start Num: 8

Candidate Starts for Shipwreck_78:

(4, 46899), (Start: 8 @47016 has 36 MA's), (13, 47139), (15, 47178), (17, 47232), (18, 47256), (19, 47313), (22, 47403), (23, 47457),

Gene: StressBall_75 Start: 46359, Stop: 46718, Start Num: 8

Candidate Starts for StressBall_75:

(4, 46242), (7, 46314), (Start: 8 @46359 has 36 MA's), (17, 46542), (18, 46566), (20, 46575), (21, 46599), (22, 46647), (23, 46701),

Gene: Techage_76 Start: 45560, Stop: 45898, Start Num: 8

Candidate Starts for Techage_76:

(4, 45443), (7, 45515), (Start: 8 @45560 has 36 MA's), (17, 45743), (20, 45755), (21, 45779), (22, 45827),

Gene: ThulaThula_75 Start: 48307, Stop: 48606, Start Num: 8

Candidate Starts for ThulaThula_75:

(Start: 8 @48307 has 36 MA's), (10, 48328), (14, 48451), (20, 48523),

Gene: TootsiePop_87 Start: 53900, Stop: 54304, Start Num: 8

Candidate Starts for TootsiePop_87:

(Start: 6 @53807 has 1 MA's), (Start: 8 @53900 has 36 MA's), (12, 53981), (16, 54071), (18, 54125),

Gene: Venti_76 Start: 44950, Stop: 45288, Start Num: 8

Candidate Starts for Venti_76:

(4, 44833), (7, 44905), (Start: 8 @44950 has 36 MA's), (17, 45133), (20, 45145), (21, 45169), (22, 45217),

Gene: Vidya_73 Start: 44968, Stop: 45306, Start Num: 8

Candidate Starts for Vidya_73:

(5, 44857), (7, 44923), (Start: 8 @44968 has 36 MA's), (17, 45151), (20, 45163), (21, 45187), (22, 45235),

Gene: Willsammy_77 Start: 46843, Stop: 47202, Start Num: 8

Candidate Starts for Willsammy_77:

(4, 46726), (7, 46798), (Start: 8 @46843 has 36 MA's), (17, 47026), (18, 47050), (20, 47059), (21, 47083), (22, 47131), (23, 47185),

Gene: Zilizebeth_80 Start: 46402, Stop: 46860, Start Num: 8

Candidate Starts for Zilizebeth_80:

(5, 46291), (Start: 8 @46402 has 36 MA's), (13, 46525), (15, 46564), (17, 46618), (18, 46642), (19, 46699), (22, 46789),