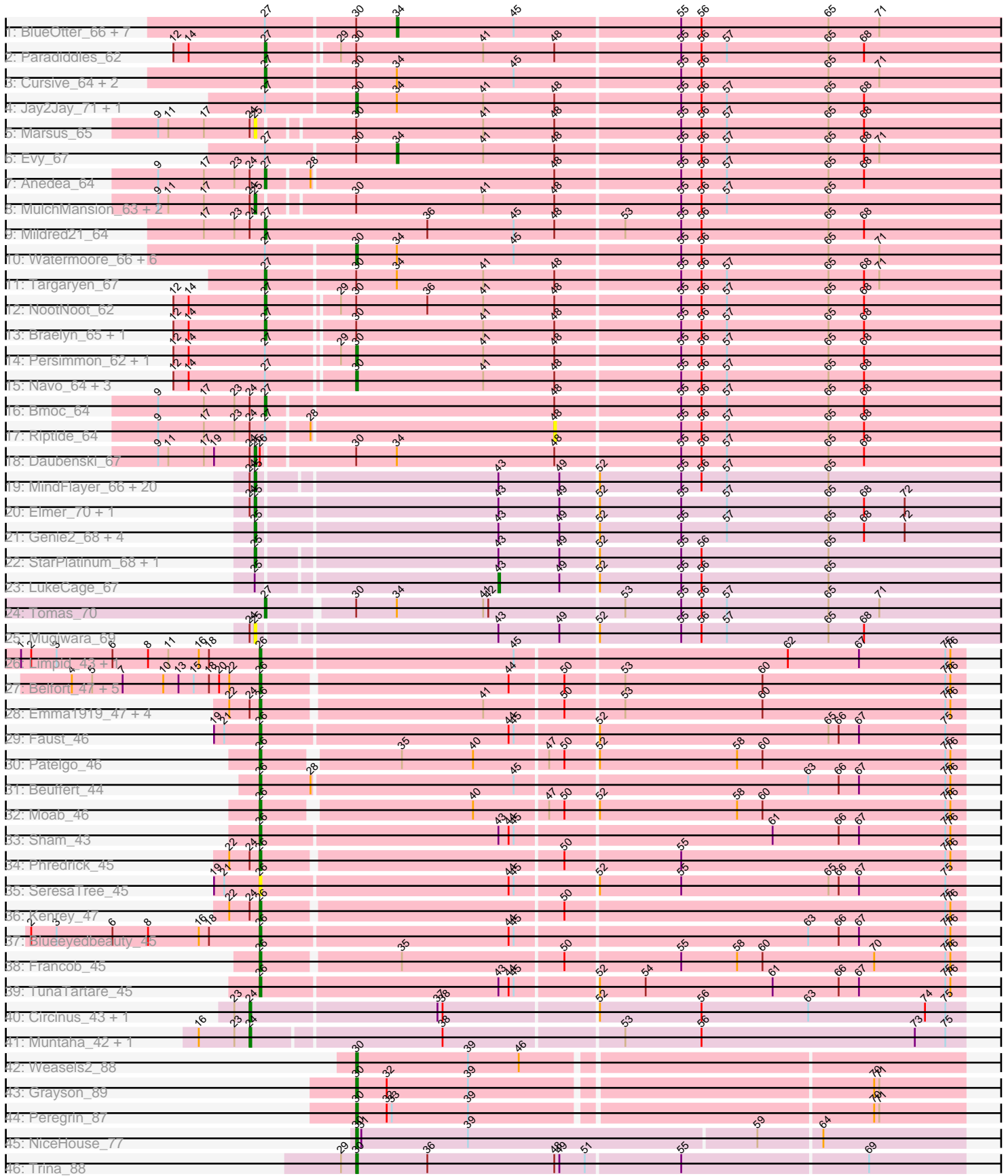


Pham 206713



Note: Tracks are now grouped by subcluster and scaled. Switching in subcluster is indicated by changes in track color. Track scale is now set by default to display the region 30 bp upstream of start 1 to 30 bp downstream of the last possible start. If this default region is judged to be packed too tightly with annotated starts, the track will be further scaled to only show that region of the ORF with annotated starts. This action will be indicated by adding "Zoomed" to the title. For starts, yellow indicates the location of called starts comprised solely of Glimmer/GeneMark auto-annotations, green indicates the location of called starts with at least 1 manual gene annotation.

Pham 206713 Report

This analysis was run 02/22/25 on database version 588.

Pham number 206713 has 107 members, 9 are drafts.

Phages represented in each track:

- Track 1 : BlueOtter_66, Tribute_64, HangryHippo_66, Samisti12_66, Scheme_67, Shuckle_64, Larnav_66, Teutsch_66
- Track 2 : Paradiddles_62
- Track 3 : Cursive_64, PacManQ_65, Lululemon_65
- Track 4 : Jay2Jay_71, Warpy_70
- Track 5 : Marsus_65
- Track 6 : Evy_67
- Track 7 : Anedea_64
- Track 8 : MulchMansion_63, LilMartin_63, Angela_63
- Track 9 : Mildred21_64
- Track 10 : Watermoore_66, Leo04_67, Cross_66, Peebs_65, Pepperwood_66, Sushi23_66, EGole_67
- Track 11 : Targaryen_67
- Track 12 : NootNoot_62
- Track 13 : Braelyn_65, Liandry_65
- Track 14 : Persimmon_62, WhereRU_63
- Track 15 : Navo_64, Bartholomune_64, PinkiePie_64, Squillium_65
- Track 16 : Bmoc_64
- Track 17 : Riptide_64
- Track 18 : Daubenski_67
- Track 19 : MindFlayer_66, Wipeout_66, Bordeaux_66, Battuta_66, Birchlyn_65, SaltySpitoon_68, Amabiko_68, Karimac_67, Gibbi_72, TomSawyer_66, Spilled_69, Spelly_68, IchabodCrane_65, JimJam_68, PumpkinSpice_67, KentuckyRacer_68, Jollison_67, Rikishi_71, Starbow_66, CeilingFan_67, Quarant19_68
- Track 20 : Elmer_70, Wofford_67
- Track 21 : Genie2_68, Stanimal_68, Sollertia_68, Yaboi_68, BoomerJR_68
- Track 22 : StarPlatinum_68, Enyigma_68
- Track 23 : LukeCage_67
- Track 24 : Tomas_70
- Track 25 : Mugiwara_69
- Track 26 : Limpid_43, Annadreamy_43
- Track 27 : Belfort_47, Stigma_46, Westy_46, Karp_45, Comrade_46, SparkleGoddess_46
- Track 28 : Emma1919_47, Gilson_47, MeganTheeKilla_45, Forrest_47, Jada_45
- Track 29 : Faust_46
- Track 30 : Patelgo_46
- Track 31 : Beuffert_44

- Track 32 : Moab_46
- Track 33 : Sham_43
- Track 34 : Phredrick_45
- Track 35 : SeresaTree_45
- Track 36 : Kenrey_47
- Track 37 : Blueeyedbeauty_45
- Track 38 : Francob_45
- Track 39 : TunaTartare_45
- Track 40 : Circinus_43, BillNye_41
- Track 41 : Muntaha_42, Wakanda_42
- Track 42 : Weasels2_88
- Track 43 : Grayson_89
- Track 44 : Peregrin_87
- Track 45 : NiceHouse_77
- Track 46 : Trina_88

Summary of Final Annotations (See graph section above for start numbers):

The start number called the most often in the published annotations is 25, it was called in 32 of the 98 non-draft genes in the pham.

Genes that call this "Most Annotated" start:

- Amabiko_68, Angela_63, Battuta_66, Birchlyn_65, BoomerJR_68, Bordeaux_66, CeilingFan_67, Daubenski_67, Elmer_70, Enygma_68, Genie2_68, Gibbi_72, IchabodCrane_65, JimJam_68, Jollison_67, Karimac_67, KentuckyRacer_68, LilMartin_63, Marsus_65, MindFlayer_66, Mugiwara_69, MulchMansion_63, PumpkinSpice_67, Quarant19_68, Rikishi_71, SaltySpittoon_68, Sollertia_68, Spelly_68, Spilled_69, Stanimal_68, StarPlatinum_68, Starbow_66, TomSawyer_66, Wipeout_66, Wofford_67, Yaboi_68,

Genes that have the "Most Annotated" start but do not call it:

- LukeCage_67,

Genes that do not have the "Most Annotated" start:

- Anedea_64, Annadreamy_43, Bartholomune_64, Belfort_47, Beuffert_44, BillNye_41, BlueOtter_66, Blueeyedbeauty_45, Bmoc_64, Braelyn_65, Circinus_43, Comrade_46, Cross_66, Cursive_64, EGole_67, Emma1919_47, Evy_67, Faust_46, Forrest_47, Francob_45, Gilson_47, Grayson_89, HangryHippo_66, Jada_45, Jay2Jay_71, Karp_45, Kenrey_47, Larnav_66, Leo04_67, Liandry_65, Limpid_43, Lululemon_65, MeganTheeKilla_45, Mildred21_64, Moab_46, Muntaha_42, Navo_64, NiceHouse_77, NootNoot_62, PacManQ_65, Paradiddles_62, Patelgo_46, Peebs_65, Pepperwood_66, Peregrin_87, Persimmon_62, Phredrick_45, PinkiePie_64, Riptide_64, Samisti12_66, Scheme_67, SeresaTree_45, Sham_43, Shuckle_64, SparkleGoddess_46, Squillium_65, Stigma_46, Sushi23_66, Targaryen_67, Teutsch_66, Tomas_70, Tribute_64, Trina_88, TunaTartare_45, Wakanda_42, Warpy_70, Watermoore_66, Weasels2_88, Westy_46, WhereRU_63,

Summary by start number:

Start 24:

- Found in 44 of 107 (41.1%) of genes in pham
- Manual Annotations of this start: 4 of 98
- Called 9.1% of time when present
- Phage (with cluster) where this start called: BillNye_41 (BK2), Circinus_43 (BK2), Muntaha_42 (BK2), Wakanda_42 (BK2),

Start 25:

- Found in 37 of 107 (34.6%) of genes in pham
- Manual Annotations of this start: 32 of 98
- Called 97.3% of time when present
- Phage (with cluster) where this start called: Amabiko_68 (BE2), Angela_63 (BE1), Battuta_66 (BE2), Birchlyn_65 (BE2), BoomerJR_68 (BE2), Bordeaux_66 (BE2), CeilingFan_67 (BE2), Daubenski_67 (BE1), Elmer_70 (BE2), Enygma_68 (BE2), Genie2_68 (BE2), Gibbi_72 (BE2), IchabodCrane_65 (BE2), JimJam_68 (BE2), Jollison_67 (BE2), Karimac_67 (BE2), KentuckyRacer_68 (BE2), LilMartin_63 (BE1), Marsus_65 (BE1), MindFlayer_66 (BE2), Mugiwara_69 (BE2), MulchMansion_63 (BE1), PumpkinSpice_67 (BE2), Quarant19_68 (BE2), Rikishi_71 (BE2), SaltySpittoon_68 (BE2), Sollertia_68 (BE2), Spelly_68 (BE2), Spilled_69 (BE2), Stanimal_68 (BE2), StarPlatinum_68 (BE2), Starbow_66 (BE2), TomSawyer_66 (BE2), Wipeout_66 (BE2), Wofford_67 (BE2), Yaboi_68 (BE2),

Start 26:

- Found in 25 of 107 (23.4%) of genes in pham
- Manual Annotations of this start: 22 of 98
- Called 96.0% of time when present
- Phage (with cluster) where this start called: Annadreamy_43 (BK1), Belfort_47 (BK1), Beuffert_44 (BK1), Blueeyedbeauty_45 (BK1), Comrade_46 (BK1), Emma1919_47 (BK1), Faust_46 (BK1), Forrest_47 (BK1), Francob_45 (BK1), Gilson_47 (BK1), Jada_45 (BK1), Karp_45 (BK1), Kenrey_47 (BK1), Limpid_43 (BK1), MeganTheeKilla_45 (BK1), Moab_46 (BK1), Patelgo_46 (BK1), Phredrick_45 (BK1), SeresaTree_45 (BK1), Sham_43 (BK1), SparkleGoddess_46 (BK1), Stigma_46 (BK1), TunaTartare_45 (BK1), Westy_46 (BK1),

Start 27:

- Found in 37 of 107 (34.6%) of genes in pham
- Manual Annotations of this start: 12 of 98
- Called 32.4% of time when present
- Phage (with cluster) where this start called: Anedea_64 (BE1), Bmoc_64 (BE1), Braelyn_65 (BE1), Cursive_64 (BE1), Liandry_65 (BE1), Lululemon_65 (BE1), Mildred21_64 (BE1), NootNoot_62 (BE1), PacManQ_65 (BE1), Paradiddles_62 (BE1), Targaryen_67 (BE1), Tomas_70 (BE2),

Start 30:

- Found in 43 of 107 (40.2%) of genes in pham
- Manual Annotations of this start: 20 of 98
- Called 46.5% of time when present
- Phage (with cluster) where this start called: Bartholomune_64 (BE1), Cross_66 (BE1), EGole_67 (BE1), Grayson_89 (CB), Jay2Jay_71 (BE1), Leo04_67 (BE1), Navo_64 (BE1), NiceHouse_77 (CE), Peebs_65 (BE1), Pepperwood_66 (BE1), Peregrin_87 (CB), Persimmon_62 (BE1), PinkiePie_64 (BE1), Squillium_65 (BE1), Sushi23_66 (BE1), Trina_88 (CE), Warpy_70 (BE1), Watermoore_66 (BE1), Weasels2_88 (CB), WhereRU_63 (BE1),

Start 34:

- Found in 24 of 107 (22.4%) of genes in pham
- Manual Annotations of this start: 7 of 98
- Called 37.5% of time when present
- Phage (with cluster) where this start called: BlueOtter_66 (BE1), Evy_67 (BE1), HangryHippo_66 (BE1), Larnav_66 (BE1), Samisti12_66 (BE1), Scheme_67 (BE1), Shuckle_64 (BE1), Teutsch_66 (BE1), Tribute_64 (BE1),

Start 43:

- Found in 34 of 107 (31.8%) of genes in pham
- Manual Annotations of this start: 1 of 98
- Called 2.9% of time when present
- Phage (with cluster) where this start called: LukeCage_67 (BE2),

Start 48:

- Found in 24 of 107 (22.4%) of genes in pham
- No Manual Annotations of this start.
- Called 4.2% of time when present
- Phage (with cluster) where this start called: Riptide_64 (BE1),

Summary by clusters:

There are 6 clusters represented in this pham: CB, CE, BK1, BK2, BE2, BE1,

Info for manual annotations of cluster BE1:

- Start number 25 was manually annotated 4 times for cluster BE1.
- Start number 27 was manually annotated 11 times for cluster BE1.
- Start number 30 was manually annotated 15 times for cluster BE1.
- Start number 34 was manually annotated 7 times for cluster BE1.

Info for manual annotations of cluster BE2:

- Start number 25 was manually annotated 28 times for cluster BE2.
- Start number 27 was manually annotated 1 time for cluster BE2.
- Start number 43 was manually annotated 1 time for cluster BE2.

Info for manual annotations of cluster BK1:

- Start number 26 was manually annotated 22 times for cluster BK1.

Info for manual annotations of cluster BK2:

- Start number 24 was manually annotated 4 times for cluster BK2.

Info for manual annotations of cluster CB:

- Start number 30 was manually annotated 3 times for cluster CB.

Info for manual annotations of cluster CE:

- Start number 30 was manually annotated 2 times for cluster CE.

Gene Information:

Gene: Amabiko_68 Start: 51148, Stop: 51591, Start Num: 25

Candidate Starts for Amabiko_68:

(Start: 24 @51145 has 4 MA's), (Start: 25 @51148 has 32 MA's), (Start: 43 @51283 has 1 MA's), (49, 51319), (52, 51340), (55, 51388), (56, 51400), (57, 51415), (65, 51475),

Gene: Anedea_64 Start: 50725, Stop: 51165, Start Num: 27

Candidate Starts for Anedea_64:

(9, 50662), (17, 50689), (23, 50707), (Start: 24 @50716 has 4 MA's), (Start: 27 @50725 has 12 MA's), (28, 50749), (48, 50890), (55, 50962), (56, 50974), (57, 50989), (65, 51049), (68, 51070),

Gene: Angela_63 Start: 50183, Stop: 50626, Start Num: 25

Candidate Starts for Angela_63:

(9, 50126), (11, 50132), (17, 50153), (Start: 24 @50180 has 4 MA's), (Start: 25 @50183 has 32 MA's), (Start: 30 @50234 has 20 MA's), (41, 50309), (48, 50351), (55, 50423), (56, 50435), (57, 50450), (65, 50510),

Gene: Annadreamy_43 Start: 39981, Stop: 40388, Start Num: 26

Candidate Starts for Annadreamy_43:

(1, 39840), (2, 39846), (3, 39861), (6, 39894), (8, 39915), (11, 39927), (16, 39945), (18, 39951), (Start: 26 @39981 has 22 MA's), (45, 40128), (62, 40284), (67, 40326), (75, 40377), (76, 40380),

Gene: Bartholomune_64 Start: 50499, Stop: 50891, Start Num: 30

Candidate Starts for Bartholomune_64:

(12, 50397), (14, 50406), (Start: 27 @50451 has 12 MA's), (Start: 30 @50499 has 20 MA's), (41, 50574), (48, 50616), (55, 50688), (56, 50700), (57, 50715), (65, 50775), (68, 50796),

Gene: Battuta_66 Start: 51122, Stop: 51565, Start Num: 25

Candidate Starts for Battuta_66:

(Start: 24 @51119 has 4 MA's), (Start: 25 @51122 has 32 MA's), (Start: 43 @51257 has 1 MA's), (49, 51293), (52, 51314), (55, 51362), (56, 51374), (57, 51389), (65, 51449),

Gene: Belfort_47 Start: 42499, Stop: 42903, Start Num: 26

Candidate Starts for Belfort_47:

(4, 42388), (5, 42400), (7, 42418), (10, 42442), (13, 42451), (15, 42460), (18, 42469), (20, 42475), (22, 42481), (Start: 26 @42499 has 22 MA's), (44, 42640), (50, 42670), (53, 42703), (60, 42784), (75, 42892), (76, 42895),

Gene: Beuffert_44 Start: 41122, Stop: 41529, Start Num: 26

Candidate Starts for Beuffert_44:

(Start: 26 @41122 has 22 MA's), (28, 41152), (45, 41269), (63, 41437), (66, 41455), (67, 41467), (75, 41518), (76, 41521),

Gene: BillNye_41 Start: 43372, Stop: 43785, Start Num: 24

Candidate Starts for BillNye_41:

(23, 43363), (Start: 24 @43372 has 4 MA's), (37, 43480), (38, 43483), (52, 43570), (56, 43630), (63, 43693), (74, 43762), (75, 43774),

Gene: Birchlyn_65 Start: 49005, Stop: 49448, Start Num: 25

Candidate Starts for Birchlyn_65:

(Start: 24 @49002 has 4 MA's), (Start: 25 @49005 has 32 MA's), (Start: 43 @49140 has 1 MA's), (49, 49176), (52, 49197), (55, 49245), (56, 49257), (57, 49272), (65, 49332),

Gene: BlueOtter_66 Start: 51903, Stop: 52271, Start Num: 34

Candidate Starts for BlueOtter_66:

(Start: 27 @51828 has 12 MA's), (Start: 30 @51879 has 20 MA's), (Start: 34 @51903 has 7 MA's), (45, 51972), (55, 52068), (56, 52080), (65, 52155), (71, 52185),

Gene: Blueeyedbeauty_45 Start: 40493, Stop: 40900, Start Num: 26

Candidate Starts for Blueeyedbeauty_45:

(2, 40358), (3, 40373), (6, 40406), (8, 40427), (16, 40457), (18, 40463), (Start: 26 @40493 has 22 MA's), (44, 40637), (45, 40640), (63, 40808), (66, 40826), (67, 40838), (75, 40889), (76, 40892),

Gene: Bmoc_64 Start: 50529, Stop: 50969, Start Num: 27

Candidate Starts for Bmoc_64:

(9, 50466), (17, 50493), (23, 50511), (Start: 24 @50520 has 4 MA's), (Start: 27 @50529 has 12 MA's), (48, 50694), (55, 50766), (56, 50778), (57, 50793), (65, 50853), (68, 50874),

Gene: BoomerJR_68 Start: 50999, Stop: 51445, Start Num: 25

Candidate Starts for BoomerJR_68:

(Start: 25 @50999 has 32 MA's), (Start: 43 @51137 has 1 MA's), (49, 51173), (52, 51194), (55, 51242), (57, 51269), (65, 51329), (68, 51350), (72, 51374),

Gene: Bordeaux_66 Start: 51277, Stop: 51720, Start Num: 25

Candidate Starts for Bordeaux_66:

(Start: 24 @51274 has 4 MA's), (Start: 25 @51277 has 32 MA's), (Start: 43 @51412 has 1 MA's), (49, 51448), (52, 51469), (55, 51517), (56, 51529), (57, 51544), (65, 51604),

Gene: Braelyn_65 Start: 51218, Stop: 51658, Start Num: 27

Candidate Starts for Braelyn_65:

(12, 51164), (14, 51173), (Start: 27 @51218 has 12 MA's), (Start: 30 @51266 has 20 MA's), (41, 51341), (48, 51383), (55, 51455), (56, 51467), (57, 51482), (65, 51542), (68, 51563),

Gene: CeilingFan_67 Start: 51037, Stop: 51480, Start Num: 25

Candidate Starts for CeilingFan_67:

(Start: 24 @51034 has 4 MA's), (Start: 25 @51037 has 32 MA's), (Start: 43 @51172 has 1 MA's), (49, 51208), (52, 51229), (55, 51277), (56, 51289), (57, 51304), (65, 51364),

Gene: Circinus_43 Start: 43511, Stop: 43924, Start Num: 24

Candidate Starts for Circinus_43:

(23, 43502), (Start: 24 @43511 has 4 MA's), (37, 43619), (38, 43622), (52, 43709), (56, 43769), (63, 43832), (74, 43901), (75, 43913),

Gene: Comrade_46 Start: 42114, Stop: 42518, Start Num: 26

Candidate Starts for Comrade_46:

(4, 42003), (5, 42015), (7, 42033), (10, 42057), (13, 42066), (15, 42075), (18, 42084), (20, 42090), (22, 42096), (Start: 26 @42114 has 22 MA's), (44, 42255), (50, 42285), (53, 42318), (60, 42399), (75, 42507), (76, 42510),

Gene: Cross_66 Start: 51880, Stop: 52272, Start Num: 30

Candidate Starts for Cross_66:

(Start: 27 @51829 has 12 MA's), (Start: 30 @51880 has 20 MA's), (Start: 34 @51904 has 7 MA's), (45, 51973), (55, 52069), (56, 52081), (65, 52156), (71, 52186),

Gene: Cursive_64 Start: 51354, Stop: 51797, Start Num: 27

Candidate Starts for Cursive_64:

(Start: 27 @51354 has 12 MA's), (Start: 30 @51405 has 20 MA's), (Start: 34 @51429 has 7 MA's), (45, 51498), (55, 51594), (56, 51606), (65, 51681), (71, 51711),

Gene: Daubenski_67 Start: 51592, Stop: 52038, Start Num: 25

Candidate Starts for Daubenski_67:

(9, 51535), (11, 51541), (17, 51562), (19, 51568), (Start: 24 @51589 has 4 MA's), (Start: 25 @51592 has 32 MA's), (Start: 26 @51595 has 22 MA's), (Start: 30 @51646 has 20 MA's), (Start: 34 @51670 has 7 MA's), (48, 51763), (55, 51835), (56, 51847), (57, 51862), (65, 51922), (68, 51943),

Gene: EGole_67 Start: 52826, Stop: 53218, Start Num: 30

Candidate Starts for EGole_67:

(Start: 27 @52775 has 12 MA's), (Start: 30 @52826 has 20 MA's), (Start: 34 @52850 has 7 MA's), (45, 52919), (55, 53015), (56, 53027), (65, 53102), (71, 53132),

Gene: Elmer_70 Start: 52212, Stop: 52658, Start Num: 25

Candidate Starts for Elmer_70:

(Start: 24 @52209 has 4 MA's), (Start: 25 @52212 has 32 MA's), (Start: 43 @52350 has 1 MA's), (49, 52386), (52, 52407), (55, 52455), (57, 52482), (65, 52542), (68, 52563), (72, 52587),

Gene: Emma1919_47 Start: 40904, Stop: 41308, Start Num: 26

Candidate Starts for Emma1919_47:

(22, 40886), (Start: 24 @40898 has 4 MA's), (Start: 26 @40904 has 22 MA's), (41, 41030), (50, 41075), (53, 41108), (60, 41189), (75, 41297), (76, 41300),

Gene: Enygma_68 Start: 52940, Stop: 53383, Start Num: 25

Candidate Starts for Enygma_68:

(Start: 25 @52940 has 32 MA's), (Start: 43 @53075 has 1 MA's), (49, 53111), (52, 53132), (55, 53180), (56, 53192), (65, 53267),

Gene: Evy_67 Start: 51893, Stop: 52261, Start Num: 34

Candidate Starts for Evy_67:

(Start: 27 @51818 has 12 MA's), (Start: 30 @51869 has 20 MA's), (Start: 34 @51893 has 7 MA's), (41, 51944), (48, 51986), (55, 52058), (56, 52070), (57, 52085), (65, 52145), (68, 52166), (71, 52175),

Gene: Faust_46 Start: 41424, Stop: 41831, Start Num: 26

Candidate Starts for Faust_46:

(19, 41397), (21, 41403), (Start: 26 @41424 has 22 MA's), (44, 41568), (45, 41571), (52, 41616), (65, 41751), (66, 41757), (67, 41769), (75, 41820),

Gene: Forrest_47 Start: 41039, Stop: 41443, Start Num: 26

Candidate Starts for Forrest_47:

(22, 41021), (Start: 24 @41033 has 4 MA's), (Start: 26 @41039 has 22 MA's), (41, 41165), (50, 41210), (53, 41243), (60, 41324), (75, 41432), (76, 41435),

Gene: Francob_45 Start: 40974, Stop: 41378, Start Num: 26

Candidate Starts for Francob_45:

(Start: 26 @40974 has 22 MA's), (35, 41052), (50, 41145), (55, 41211), (58, 41244), (60, 41259), (70, 41325), (75, 41367), (76, 41370),

Gene: Genie2_68 Start: 51113, Stop: 51559, Start Num: 25

Candidate Starts for Genie2_68:

(Start: 25 @51113 has 32 MA's), (Start: 43 @51251 has 1 MA's), (49, 51287), (52, 51308), (55, 51356), (57, 51383), (65, 51443), (68, 51464), (72, 51488),

Gene: Gibbi_72 Start: 51260, Stop: 51703, Start Num: 25

Candidate Starts for Gibbi_72:

(Start: 24 @51257 has 4 MA's), (Start: 25 @51260 has 32 MA's), (Start: 43 @51395 has 1 MA's), (49, 51431), (52, 51452), (55, 51500), (56, 51512), (57, 51527), (65, 51587),

Gene: Gilson_47 Start: 40857, Stop: 41261, Start Num: 26

Candidate Starts for Gilson_47:

(22, 40839), (Start: 24 @40851 has 4 MA's), (Start: 26 @40857 has 22 MA's), (41, 40983), (50, 41028), (53, 41061), (60, 41142), (75, 41250), (76, 41253),

Gene: Grayson_89 Start: 54653, Stop: 55000, Start Num: 30

Candidate Starts for Grayson_89:

(Start: 30 @54653 has 20 MA's), (32, 54671), (39, 54719), (70, 54947), (71, 54950),

Gene: HangryHippo_66 Start: 51903, Stop: 52271, Start Num: 34

Candidate Starts for HangryHippo_66:

(Start: 27 @51828 has 12 MA's), (Start: 30 @51879 has 20 MA's), (Start: 34 @51903 has 7 MA's), (45, 51972), (55, 52068), (56, 52080), (65, 52155), (71, 52185),

Gene: IchabodCrane_65 Start: 50849, Stop: 51292, Start Num: 25

Candidate Starts for IchabodCrane_65:

(Start: 24 @50846 has 4 MA's), (Start: 25 @50849 has 32 MA's), (Start: 43 @50984 has 1 MA's), (49, 51020), (52, 51041), (55, 51089), (56, 51101), (57, 51116), (65, 51176),

Gene: Jada_45 Start: 40221, Stop: 40625, Start Num: 26

Candidate Starts for Jada_45:

(22, 40203), (Start: 24 @40215 has 4 MA's), (Start: 26 @40221 has 22 MA's), (41, 40347), (50, 40392), (53, 40425), (60, 40506), (75, 40614), (76, 40617),

Gene: Jay2Jay_71 Start: 52722, Stop: 53114, Start Num: 30

Candidate Starts for Jay2Jay_71:

(Start: 27 @52671 has 12 MA's), (Start: 30 @52722 has 20 MA's), (Start: 34 @52746 has 7 MA's), (41, 52797), (48, 52839), (55, 52911), (56, 52923), (57, 52938), (65, 52998), (68, 53019),

Gene: JimJam_68 Start: 51223, Stop: 51666, Start Num: 25

Candidate Starts for JimJam_68:

(Start: 24 @51220 has 4 MA's), (Start: 25 @51223 has 32 MA's), (Start: 43 @51358 has 1 MA's), (49, 51394), (52, 51415), (55, 51463), (56, 51475), (57, 51490), (65, 51550),

Gene: Jollison_67 Start: 51105, Stop: 51548, Start Num: 25

Candidate Starts for Jollison_67:

(Start: 24 @51102 has 4 MA's), (Start: 25 @51105 has 32 MA's), (Start: 43 @51240 has 1 MA's), (49, 51276), (52, 51297), (55, 51345), (56, 51357), (57, 51372), (65, 51432),

Gene: Karimac_67 Start: 51254, Stop: 51697, Start Num: 25

Candidate Starts for Karimac_67:

(Start: 24 @51251 has 4 MA's), (Start: 25 @51254 has 32 MA's), (Start: 43 @51389 has 1 MA's), (49, 51425), (52, 51446), (55, 51494), (56, 51506), (57, 51521), (65, 51581),

Gene: Karp_45 Start: 41714, Stop: 42118, Start Num: 26

Candidate Starts for Karp_45:

(4, 41603), (5, 41615), (7, 41633), (10, 41657), (13, 41666), (15, 41675), (18, 41684), (20, 41690), (22, 41696), (Start: 26 @41714 has 22 MA's), (44, 41855), (50, 41885), (53, 41918), (60, 41999), (75, 42107), (76, 42110),

Gene: Kenrey_47 Start: 41049, Stop: 41453, Start Num: 26

Candidate Starts for Kenrey_47:

(22, 41031), (Start: 24 @41043 has 4 MA's), (Start: 26 @41049 has 22 MA's), (50, 41220), (75, 41442), (76, 41445),

Gene: KentuckyRacer_68 Start: 51038, Stop: 51481, Start Num: 25

Candidate Starts for KentuckyRacer_68:

(Start: 24 @51035 has 4 MA's), (Start: 25 @51038 has 32 MA's), (Start: 43 @51173 has 1 MA's), (49, 51209), (52, 51230), (55, 51278), (56, 51290), (57, 51305), (65, 51365),

Gene: Larnav_66 Start: 51888, Stop: 52256, Start Num: 34

Candidate Starts for Larnav_66:

(Start: 27 @51813 has 12 MA's), (Start: 30 @51864 has 20 MA's), (Start: 34 @51888 has 7 MA's), (45, 51957), (55, 52053), (56, 52065), (65, 52140), (71, 52170),

Gene: Leo04_67 Start: 52379, Stop: 52771, Start Num: 30

Candidate Starts for Leo04_67:

(Start: 27 @52328 has 12 MA's), (Start: 30 @52379 has 20 MA's), (Start: 34 @52403 has 7 MA's), (45, 52472), (55, 52568), (56, 52580), (65, 52655), (71, 52685),

Gene: Liandry_65 Start: 51200, Stop: 51640, Start Num: 27

Candidate Starts for Liandry_65:

(12, 51146), (14, 51155), (Start: 27 @51200 has 12 MA's), (Start: 30 @51248 has 20 MA's), (41, 51323), (48, 51365), (55, 51437), (56, 51449), (57, 51464), (65, 51524), (68, 51545),

Gene: LilMartin_63 Start: 50131, Stop: 50574, Start Num: 25

Candidate Starts for LilMartin_63:

(9, 50074), (11, 50080), (17, 50101), (Start: 24 @50128 has 4 MA's), (Start: 25 @50131 has 32 MA's), (Start: 30 @50182 has 20 MA's), (41, 50257), (48, 50299), (55, 50371), (56, 50383), (57, 50398), (65, 50458),

Gene: Limpid_43 Start: 39980, Stop: 40387, Start Num: 26

Candidate Starts for Limpid_43:

(1, 39839), (2, 39845), (3, 39860), (6, 39893), (8, 39914), (11, 39926), (16, 39944), (18, 39950), (Start: 26 @39980 has 22 MA's), (45, 40127), (62, 40283), (67, 40325), (75, 40376), (76, 40379),

Gene: LukeCage_67 Start: 51143, Stop: 51451, Start Num: 43

Candidate Starts for LukeCage_67:

(Start: 25 @51008 has 32 MA's), (Start: 43 @51143 has 1 MA's), (49, 51179), (52, 51200), (55, 51248), (56, 51260), (65, 51335),

Gene: Lululemon_65 Start: 51209, Stop: 51652, Start Num: 27

Candidate Starts for Lululemon_65:

(Start: 27 @51209 has 12 MA's), (Start: 30 @51260 has 20 MA's), (Start: 34 @51284 has 7 MA's), (45, 51353), (55, 51449), (56, 51461), (65, 51536), (71, 51566),

Gene: Marsus_65 Start: 50403, Stop: 50846, Start Num: 25

Candidate Starts for Marsus_65:

(9, 50346), (11, 50352), (17, 50373), (Start: 24 @50400 has 4 MA's), (Start: 25 @50403 has 32 MA's), (Start: 30 @50454 has 20 MA's), (41, 50529), (48, 50571), (55, 50643), (56, 50655), (57, 50670), (65, 50730), (68, 50751),

Gene: MeganTheeKilla_45 Start: 40218, Stop: 40622, Start Num: 26

Candidate Starts for MeganTheeKilla_45:

(22, 40200), (Start: 24 @40212 has 4 MA's), (Start: 26 @40218 has 22 MA's), (41, 40344), (50, 40389), (53, 40422), (60, 40503), (75, 40611), (76, 40614),

Gene: Mildred21_64 Start: 50324, Stop: 50770, Start Num: 27

Candidate Starts for Mildred21_64:

(17, 50288), (23, 50306), (Start: 24 @50315 has 4 MA's), (Start: 27 @50324 has 12 MA's), (36, 50420), (45, 50471), (48, 50495), (53, 50534), (55, 50567), (56, 50579), (65, 50654), (68, 50675),

Gene: MindFlayer_66 Start: 50756, Stop: 51199, Start Num: 25

Candidate Starts for MindFlayer_66:

(Start: 24 @50753 has 4 MA's), (Start: 25 @50756 has 32 MA's), (Start: 43 @50891 has 1 MA's), (49, 50927), (52, 50948), (55, 50996), (56, 51008), (57, 51023), (65, 51083),

Gene: Moab_46 Start: 42091, Stop: 42492, Start Num: 26

Candidate Starts for Moab_46:

(Start: 26 @42091 has 22 MA's), (40, 42208), (47, 42250), (50, 42259), (52, 42277), (58, 42358), (60, 42373), (75, 42481), (76, 42484),

Gene: Mugiwara_69 Start: 51507, Stop: 51950, Start Num: 25

Candidate Starts for Mugiwara_69:

(Start: 24 @51504 has 4 MA's), (Start: 25 @51507 has 32 MA's), (Start: 43 @51642 has 1 MA's), (49, 51678), (52, 51699), (55, 51747), (56, 51759), (57, 51774), (65, 51834), (68, 51855),

Gene: MulchMansion_63 Start: 50131, Stop: 50574, Start Num: 25

Candidate Starts for MulchMansion_63:

(9, 50074), (11, 50080), (17, 50101), (Start: 24 @50128 has 4 MA's), (Start: 25 @50131 has 32 MA's), (Start: 30 @50182 has 20 MA's), (41, 50257), (48, 50299), (55, 50371), (56, 50383), (57, 50398), (65, 50458),

Gene: Muntaha_42 Start: 41788, Stop: 42198, Start Num: 24

Candidate Starts for Muntaha_42:

(16, 41758), (23, 41779), (Start: 24 @41788 has 4 MA's), (38, 41896), (53, 41998), (56, 42043), (73, 42169), (75, 42187),

Gene: Navo_64 Start: 51170, Stop: 51562, Start Num: 30

Candidate Starts for Navo_64:

(12, 51068), (14, 51077), (Start: 27 @51122 has 12 MA's), (Start: 30 @51170 has 20 MA's), (41, 51245), (48, 51287), (55, 51359), (56, 51371), (57, 51386), (65, 51446), (68, 51467),

Gene: NiceHouse_77 Start: 57280, Stop: 57633, Start Num: 30

Candidate Starts for NiceHouse_77:

(Start: 30 @57280 has 20 MA's), (31, 57283), (39, 57346), (59, 57514), (64, 57550),

Gene: NootNoot_62 Start: 50114, Stop: 50554, Start Num: 27

Candidate Starts for NootNoot_62:

(12, 50060), (14, 50069), (Start: 27 @50114 has 12 MA's), (29, 50153), (Start: 30 @50162 has 20 MA's), (36, 50204), (41, 50237), (48, 50279), (55, 50351), (56, 50363), (57, 50378), (65, 50438), (68, 50459),

Gene: PacManQ_65 Start: 51209, Stop: 51652, Start Num: 27

Candidate Starts for PacManQ_65:

(Start: 27 @51209 has 12 MA's), (Start: 30 @51260 has 20 MA's), (Start: 34 @51284 has 7 MA's), (45, 51353), (55, 51449), (56, 51461), (65, 51536), (71, 51566),

Gene: Paradiddles_62 Start: 50378, Stop: 50818, Start Num: 27

Candidate Starts for Paradiddles_62:

(12, 50324), (14, 50333), (Start: 27 @50378 has 12 MA's), (29, 50417), (Start: 30 @50426 has 20 MA's), (41, 50501), (48, 50543), (55, 50615), (56, 50627), (57, 50642), (65, 50702), (68, 50723),

Gene: Patelgo_46 Start: 42278, Stop: 42679, Start Num: 26

Candidate Starts for Patelgo_46:

(Start: 26 @42278 has 22 MA's), (35, 42353), (40, 42395), (47, 42437), (50, 42446), (52, 42464), (58, 42545), (60, 42560), (75, 42668), (76, 42671),

Gene: Peebs_65 Start: 51614, Stop: 52006, Start Num: 30

Candidate Starts for Peebs_65:

(Start: 27 @51563 has 12 MA's), (Start: 30 @51614 has 20 MA's), (Start: 34 @51638 has 7 MA's), (45, 51707), (55, 51803), (56, 51815), (65, 51890), (71, 51920),

Gene: Pepperwood_66 Start: 51747, Stop: 52139, Start Num: 30

Candidate Starts for Pepperwood_66:

(Start: 27 @51696 has 12 MA's), (Start: 30 @51747 has 20 MA's), (Start: 34 @51771 has 7 MA's), (45, 51840), (55, 51936), (56, 51948), (65, 52023), (71, 52053),

Gene: Peregrin_87 Start: 53436, Stop: 53783, Start Num: 30

Candidate Starts for Peregrin_87:

(Start: 30 @53436 has 20 MA's), (32, 53454), (33, 53457), (39, 53502), (70, 53730), (71, 53733),

Gene: Persimmon_62 Start: 50095, Stop: 50487, Start Num: 30

Candidate Starts for Persimmon_62:

(12, 49993), (14, 50002), (Start: 27 @50047 has 12 MA's), (29, 50086), (Start: 30 @50095 has 20 MA's), (41, 50170), (48, 50212), (55, 50284), (56, 50296), (57, 50311), (65, 50371), (68, 50392),

Gene: Phredrick_45 Start: 40120, Stop: 40524, Start Num: 26

Candidate Starts for Phredrick_45:

(22, 40102), (Start: 24 @40114 has 4 MA's), (Start: 26 @40120 has 22 MA's), (50, 40291), (55, 40357), (75, 40513), (76, 40516),

Gene: PinkiePie_64 Start: 51248, Stop: 51640, Start Num: 30

Candidate Starts for PinkiePie_64:

(12, 51146), (14, 51155), (Start: 27 @51200 has 12 MA's), (Start: 30 @51248 has 20 MA's), (41, 51323), (48, 51365), (55, 51437), (56, 51449), (57, 51464), (65, 51524), (68, 51545),

Gene: PumpkinSpice_67 Start: 51148, Stop: 51591, Start Num: 25

Candidate Starts for PumpkinSpice_67:

(Start: 24 @51145 has 4 MA's), (Start: 25 @51148 has 32 MA's), (Start: 43 @51283 has 1 MA's), (49, 51319), (52, 51340), (55, 51388), (56, 51400), (57, 51415), (65, 51475),

Gene: Quaran19_68 Start: 51139, Stop: 51582, Start Num: 25

Candidate Starts for Quaran19_68:

(Start: 24 @51136 has 4 MA's), (Start: 25 @51139 has 32 MA's), (Start: 43 @51274 has 1 MA's), (49, 51310), (52, 51331), (55, 51379), (56, 51391), (57, 51406), (65, 51466),

Gene: Rikishi_71 Start: 51054, Stop: 51497, Start Num: 25

Candidate Starts for Rikishi_71:

(Start: 24 @51051 has 4 MA's), (Start: 25 @51054 has 32 MA's), (Start: 43 @51189 has 1 MA's), (49, 51225), (52, 51246), (55, 51294), (56, 51306), (57, 51321), (65, 51381),

Gene: Riptide_64 Start: 50112, Stop: 50387, Start Num: 48

Candidate Starts for Riptide_64:

(9, 49884), (17, 49911), (23, 49929), (Start: 24 @49938 has 4 MA's), (Start: 27 @49947 has 12 MA's), (28, 49971), (48, 50112), (55, 50184), (56, 50196), (57, 50211), (65, 50271), (68, 50292),

Gene: SaltySpittoon_68 Start: 51148, Stop: 51591, Start Num: 25

Candidate Starts for SaltySpittoon_68:

(Start: 24 @51145 has 4 MA's), (Start: 25 @51148 has 32 MA's), (Start: 43 @51283 has 1 MA's), (49, 51319), (52, 51340), (55, 51388), (56, 51400), (57, 51415), (65, 51475),

Gene: Samisti12_66 Start: 53078, Stop: 53446, Start Num: 34

Candidate Starts for Samisti12_66:

(Start: 27 @53003 has 12 MA's), (Start: 30 @53054 has 20 MA's), (Start: 34 @53078 has 7 MA's), (45, 53147), (55, 53243), (56, 53255), (65, 53330), (71, 53360),

Gene: Scheme_67 Start: 52485, Stop: 52853, Start Num: 34

Candidate Starts for Scheme_67:

(Start: 27 @52410 has 12 MA's), (Start: 30 @52461 has 20 MA's), (Start: 34 @52485 has 7 MA's), (45, 52554), (55, 52650), (56, 52662), (65, 52737), (71, 52767),

Gene: SeresaTree_45 Start: 40814, Stop: 41221, Start Num: 26

Candidate Starts for SeresaTree_45:

(19, 40787), (21, 40793), (Start: 26 @40814 has 22 MA's), (44, 40958), (45, 40961), (52, 41006), (55, 41054), (65, 41141), (66, 41147), (67, 41159), (75, 41210),

Gene: Sham_43 Start: 41978, Stop: 42385, Start Num: 26

Candidate Starts for Sham_43:

(Start: 26 @41978 has 22 MA's), (Start: 43 @42116 has 1 MA's), (44, 42122), (45, 42125), (61, 42272), (66, 42311), (67, 42323), (75, 42374), (76, 42377),

Gene: Shuckle_64 Start: 52092, Stop: 52460, Start Num: 34

Candidate Starts for Shuckle_64:

(Start: 27 @52017 has 12 MA's), (Start: 30 @52068 has 20 MA's), (Start: 34 @52092 has 7 MA's), (45, 52161), (55, 52257), (56, 52269), (65, 52344), (71, 52374),

Gene: Sollertia_68 Start: 51113, Stop: 51559, Start Num: 25

Candidate Starts for Sollertia_68:

(Start: 25 @51113 has 32 MA's), (Start: 43 @51251 has 1 MA's), (49, 51287), (52, 51308), (55, 51356), (57, 51383), (65, 51443), (68, 51464), (72, 51488),

Gene: SparkleGoddess_46 Start: 42116, Stop: 42520, Start Num: 26

Candidate Starts for SparkleGoddess_46:

(4, 42005), (5, 42017), (7, 42035), (10, 42059), (13, 42068), (15, 42077), (18, 42086), (20, 42092), (22, 42098), (Start: 26 @42116 has 22 MA's), (44, 42257), (50, 42287), (53, 42320), (60, 42401), (75, 42509), (76, 42512),

Gene: Spelly_68 Start: 51103, Stop: 51546, Start Num: 25

Candidate Starts for Spelly_68:

(Start: 24 @51100 has 4 MA's), (Start: 25 @51103 has 32 MA's), (Start: 43 @51238 has 1 MA's), (49, 51274), (52, 51295), (55, 51343), (56, 51355), (57, 51370), (65, 51430),

Gene: Spilled_69 Start: 51220, Stop: 51663, Start Num: 25

Candidate Starts for Spilled_69:

(Start: 24 @51217 has 4 MA's), (Start: 25 @51220 has 32 MA's), (Start: 43 @51355 has 1 MA's), (49, 51391), (52, 51412), (55, 51460), (56, 51472), (57, 51487), (65, 51547),

Gene: Squillium_65 Start: 51249, Stop: 51641, Start Num: 30

Candidate Starts for Squillium_65:

(12, 51147), (14, 51156), (Start: 27 @51201 has 12 MA's), (Start: 30 @51249 has 20 MA's), (41, 51324), (48, 51366), (55, 51438), (56, 51450), (57, 51465), (65, 51525), (68, 51546),

Gene: Stanimal_68 Start: 51002, Stop: 51448, Start Num: 25

Candidate Starts for Stanimal_68:

(Start: 25 @51002 has 32 MA's), (Start: 43 @51140 has 1 MA's), (49, 51176), (52, 51197), (55, 51245), (57, 51272), (65, 51332), (68, 51353), (72, 51377),

Gene: StarPlatinum_68 Start: 51648, Stop: 52091, Start Num: 25

Candidate Starts for StarPlatinum_68:

(Start: 25 @51648 has 32 MA's), (Start: 43 @51783 has 1 MA's), (49, 51819), (52, 51840), (55, 51888), (56, 51900), (65, 51975),

Gene: Starbow_66 Start: 51124, Stop: 51567, Start Num: 25

Candidate Starts for Starbow_66:

(Start: 24 @51121 has 4 MA's), (Start: 25 @51124 has 32 MA's), (Start: 43 @51259 has 1 MA's), (49, 51295), (52, 51316), (55, 51364), (56, 51376), (57, 51391), (65, 51451),

Gene: Stigma_46 Start: 42129, Stop: 42533, Start Num: 26

Candidate Starts for Stigma_46:

(4, 42018), (5, 42030), (7, 42048), (10, 42072), (13, 42081), (15, 42090), (18, 42099), (20, 42105), (22, 42111), (Start: 26 @42129 has 22 MA's), (44, 42270), (50, 42300), (53, 42333), (60, 42414), (75, 42522), (76, 42525),

Gene: Sushi23_66 Start: 51972, Stop: 52364, Start Num: 30

Candidate Starts for Sushi23_66:

(Start: 27 @51921 has 12 MA's), (Start: 30 @51972 has 20 MA's), (Start: 34 @51996 has 7 MA's), (45, 52065), (55, 52161), (56, 52173), (65, 52248), (71, 52278),

Gene: Targaryen_67 Start: 52720, Stop: 53163, Start Num: 27

Candidate Starts for Targaryen_67:

(Start: 27 @52720 has 12 MA's), (Start: 30 @52771 has 20 MA's), (Start: 34 @52795 has 7 MA's), (41, 52846), (48, 52888), (55, 52960), (56, 52972), (57, 52987), (65, 53047), (68, 53068), (71, 53077),

Gene: Teutsch_66 Start: 52259, Stop: 52627, Start Num: 34

Candidate Starts for Teutsch_66:

(Start: 27 @52184 has 12 MA's), (Start: 30 @52235 has 20 MA's), (Start: 34 @52259 has 7 MA's), (45, 52328), (55, 52424), (56, 52436), (65, 52511), (71, 52541),

Gene: TomSawyer_66 Start: 50742, Stop: 51185, Start Num: 25

Candidate Starts for TomSawyer_66:

(Start: 24 @50739 has 4 MA's), (Start: 25 @50742 has 32 MA's), (Start: 43 @50877 has 1 MA's), (49, 50913), (52, 50934), (55, 50982), (56, 50994), (57, 51009), (65, 51069),

Gene: Tomas_70 Start: 53465, Stop: 53905, Start Num: 27

Candidate Starts for Tomas_70:

(Start: 27 @53465 has 12 MA's), (Start: 30 @53513 has 20 MA's), (Start: 34 @53537 has 7 MA's), (41, 53588), (42, 53591), (53, 53669), (55, 53702), (56, 53714), (57, 53729), (65, 53789), (71, 53819),

Gene: Tribute_64 Start: 51465, Stop: 51833, Start Num: 34

Candidate Starts for Tribute_64:

(Start: 27 @51390 has 12 MA's), (Start: 30 @51441 has 20 MA's), (Start: 34 @51465 has 7 MA's), (45, 51534), (55, 51630), (56, 51642), (65, 51717), (71, 51747),

Gene: Trina_88 Start: 60434, Stop: 60787, Start Num: 30

Candidate Starts for Trina_88:

(29, 60425), (Start: 30 @60434 has 20 MA's), (36, 60476), (48, 60551), (49, 60554), (51, 60569), (55, 60623), (69, 60731),

Gene: TunaTartare_45 Start: 42276, Stop: 42683, Start Num: 26

Candidate Starts for TunaTartare_45:

(Start: 26 @42276 has 22 MA's), (Start: 43 @42414 has 1 MA's), (44, 42420), (45, 42423), (52, 42468), (54, 42495), (61, 42570), (66, 42609), (67, 42621), (75, 42672), (76, 42675),

Gene: Wakanda_42 Start: 41726, Stop: 42136, Start Num: 24

Candidate Starts for Wakanda_42:

(16, 41696), (23, 41717), (Start: 24 @41726 has 4 MA's), (38, 41834), (53, 41936), (56, 41981), (73, 42107), (75, 42125),

Gene: Warpy_70 Start: 52235, Stop: 52627, Start Num: 30

Candidate Starts for Warpy_70:

(Start: 27 @52184 has 12 MA's), (Start: 30 @52235 has 20 MA's), (Start: 34 @52259 has 7 MA's), (41, 52310), (48, 52352), (55, 52424), (56, 52436), (57, 52451), (65, 52511), (68, 52532),

Gene: Watermoore_66 Start: 52451, Stop: 52843, Start Num: 30

Candidate Starts for Watermoore_66:

(Start: 27 @52400 has 12 MA's), (Start: 30 @52451 has 20 MA's), (Start: 34 @52475 has 7 MA's), (45, 52544), (55, 52640), (56, 52652), (65, 52727), (71, 52757),

Gene: Weasels2_88 Start: 54194, Stop: 54541, Start Num: 30

Candidate Starts for Weasels2_88:

(Start: 30 @54194 has 20 MA's), (39, 54260), (46, 54290),

Gene: Westy_46 Start: 42117, Stop: 42521, Start Num: 26

Candidate Starts for Westy_46:

(4, 42006), (5, 42018), (7, 42036), (10, 42060), (13, 42069), (15, 42078), (18, 42087), (20, 42093), (22, 42099), (Start: 26 @42117 has 22 MA's), (44, 42258), (50, 42288), (53, 42321), (60, 42402), (75, 42510), (76, 42513),

Gene: WhereRU_63 Start: 50686, Stop: 51078, Start Num: 30

Candidate Starts for WhereRU_63:

(12, 50584), (14, 50593), (Start: 27 @50638 has 12 MA's), (29, 50677), (Start: 30 @50686 has 20 MA's), (41, 50761), (48, 50803), (55, 50875), (56, 50887), (57, 50902), (65, 50962), (68, 50983),

Gene: Wipeout_66 Start: 51493, Stop: 51936, Start Num: 25

Candidate Starts for Wipeout_66:

(Start: 24 @51490 has 4 MA's), (Start: 25 @51493 has 32 MA's), (Start: 43 @51628 has 1 MA's), (49, 51664), (52, 51685), (55, 51733), (56, 51745), (57, 51760), (65, 51820),

Gene: Wofford_67 Start: 52175, Stop: 52621, Start Num: 25

Candidate Starts for Wofford_67:

(Start: 24 @52172 has 4 MA's), (Start: 25 @52175 has 32 MA's), (Start: 43 @52313 has 1 MA's), (49, 52349), (52, 52370), (55, 52418), (57, 52445), (65, 52505), (68, 52526), (72, 52550),

Gene: Yaboi_68 Start: 51090, Stop: 51536, Start Num: 25

Candidate Starts for Yaboi_68:

(Start: 25 @51090 has 32 MA's), (Start: 43 @51228 has 1 MA's), (49, 51264), (52, 51285), (55, 51333), (57, 51360), (65, 51420), (68, 51441), (72, 51465),