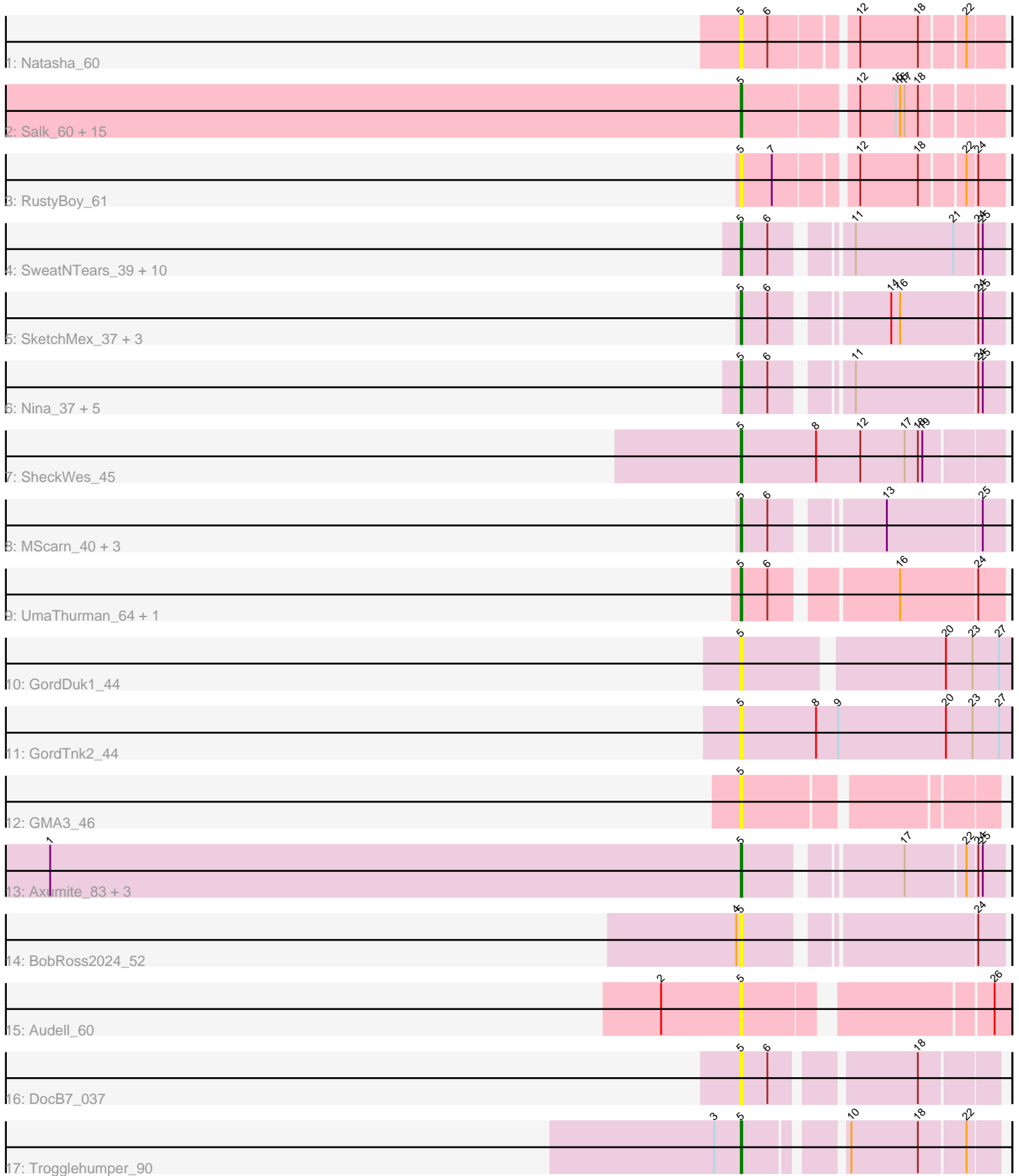


Pham 206881



Note: Tracks are now grouped by subcluster and scaled. Switching in subcluster is indicated by changes in track color. Track scale is now set by default to display the region 30 bp upstream of start 1 to 30 bp downstream of the last possible start. If this default region is judged to be packed too tightly with annotated starts, the track will be further scaled to only show that region of the ORF with annotated starts. This action will be indicated by adding "Zoomed" to the title. For starts, yellow indicates the location of called starts comprised solely of Glimmer/GeneMark auto-annotations, green indicates the location of called starts with at least 1 manual gene annotation.

Pham 206881 Report

This analysis was run 02/22/25 on database version 588.

Pham number 206881 has 57 members, 21 are drafts.

Phages represented in each track:

- Track 1 : Natasha_60
- Track 2 : Salk_60, Egad_60, Stayer_60, Sloopyjoe_60, Linda_60, Raunak_62, Boog_61, DoctorPepper_59, StarLord_60, BronxBay_60, Michelle_60, HerbBucket_59, Djungelskog_59, MrAaronian_60, Shiba_59, ProfFrink_60
- Track 3 : RustyBoy_61
- Track 4 : SweatNTears_39, Agatha_37, Starburst_39, Cozz_36, RedBaron_40, Quasar_38, PsychoKiller_37, Sopespian_37, Elliott_38, Axym_37, GoldHunter_39
- Track 5 : SketchMex_37, Biskit_39, Troje_39, Blondies_39
- Track 6 : Nina_37, MunkgeeRoachy_36, Typhonomachy_37, Burnsey_37, Socotra_39, Carsonalex_41
- Track 7 : SheckWes_45
- Track 8 : MScarn_40, Horseradish_39, Buttrmldreams_39, Yummy_39
- Track 9 : UmaThurman_64, PhrostedPhlake_68
- Track 10 : GordDuk1_44
- Track 11 : GordTnk2_44
- Track 12 : GMA3_46
- Track 13 : Axumite_83, Shatter_83, Fresco_83, Ligma_83
- Track 14 : BobRoss2024_52
- Track 15 : Audell_60
- Track 16 : DocB7_037
- Track 17 : Trogglehumper_90

Summary of Final Annotations (See graph section above for start numbers):

The start number called the most often in the published annotations is 5, it was called in 36 of the 36 non-draft genes in the pham.

Genes that call this "Most Annotated" start:

- Agatha_37, Audell_60, Axumite_83, Axym_37, Biskit_39, Blondies_39, BobRoss2024_52, Boog_61, BronxBay_60, Burnsey_37, Buttrmldreams_39, Carsonalex_41, Cozz_36, Djungelskog_59, DocB7_037, DoctorPepper_59, Egad_60, Elliott_38, Fresco_83, GMA3_46, GoldHunter_39, GordDuk1_44, GordTnk2_44, HerbBucket_59, Horseradish_39, Ligma_83, Linda_60, MScarn_40, Michelle_60, MrAaronian_60, MunkgeeRoachy_36, Natasha_60, Nina_37, PhrostedPhlake_68,

ProfFrink_60, PsychoKiller_37, Quasar_38, Raunak_62, RedBaron_40, RustyBoy_61, Salk_60, Shatter_83, SheckWes_45, Shiba_59, SketchMex_37, Sloopyjoe_60, Socotra_39, Sopespian_37, StarLord_60, Starburst_39, Stayer_60, SweatNTears_39, Trogglehumper_90, Troje_39, Typhonomachy_37, UmaThurman_64, Yummy_39,

Genes that have the "Most Annotated" start but do not call it:

-

Genes that do not have the "Most Annotated" start:

-

Summary by start number:

Start 5:

- Found in 57 of 57 (100.0%) of genes in pham
- Manual Annotations of this start: 36 of 36
- Called 100.0% of time when present
- Phage (with cluster) where this start called: Agatha_37 (CT), Audell_60 (FR), Axumite_83 (DR), Axym_37 (CT), Biskit_39 (CT), Blondies_39 (CT), BobRoss2024_52 (DR), Boog_61 (AW), BronxBay_60 (AW), Burnsey_37 (CT), Buttrmlkdreams_39 (CT), Carsonalex_41 (CT), Cozz_36 (CT), Djungelskog_59 (AW), DocB7_037 (singleton), DoctorPepper_59 (AW), Egad_60 (AW), Elliott_38 (CT), Fresco_83 (DR), GMA3_46 (DF2), GoldHunter_39 (CT), GordDuk1_44 (DF1), GordTnk2_44 (DF1), HerbBucket_59 (AW), Horseradish_39 (CT), Ligma_83 (DR), Linda_60 (AW), MScarn_40 (CT), Michelle_60 (AW), MrAaronian_60 (AW), MunkgeeRoachy_36 (CT), Natasha_60 (AW), Nina_37 (CT), PhrostedPhlake_68 (CV), ProfFrink_60 (AW), PsychoKiller_37 (CT), Quasar_38 (CT), Raunak_62 (AW), RedBaron_40 (CT), RustyBoy_61 (AW), Salk_60 (AW), Shatter_83 (DR), SheckWes_45 (CT), Shiba_59 (AW), SketchMex_37 (CT), Sloopyjoe_60 (AW), Socotra_39 (CT), Sopespian_37 (CT), StarLord_60 (AW), Starburst_39 (CT), Stayer_60 (AW), SweatNTears_39 (CT), Trogglehumper_90 (singleton), Troje_39 (CT), Typhonomachy_37 (CT), UmaThurman_64 (CV), Yummy_39 (CT),

Summary by clusters:

There are 8 clusters represented in this pham: singleton, DF1, FR, DF2, AW, DR, CV, CT,

Info for manual annotations of cluster AW:

- Start number 5 was manually annotated 13 times for cluster AW.

Info for manual annotations of cluster CT:

- Start number 5 was manually annotated 16 times for cluster CT.

Info for manual annotations of cluster CV:

- Start number 5 was manually annotated 2 times for cluster CV.

Info for manual annotations of cluster DR:

- Start number 5 was manually annotated 4 times for cluster DR.

Gene Information:

Gene: Agatha_37 Start: 27161, Stop: 27003, Start Num: 5

Candidate Starts for Agatha_37:

(Start: 5 @27161 has 36 MA's), (6, 27143), (11, 27101), (21, 27035), (24, 27020), (25, 27017),

Gene: Audell_60 Start: 38775, Stop: 38617, Start Num: 5

Candidate Starts for Audell_60:

(2, 38829), (Start: 5 @38775 has 36 MA's), (26, 38628),

Gene: Axumite_83 Start: 60379, Stop: 60224, Start Num: 5

Candidate Starts for Axumite_83:

(1, 60847), (Start: 5 @60379 has 36 MA's), (17, 60286), (22, 60247), (24, 60241), (25, 60238),

Gene: Axym_37 Start: 27139, Stop: 26981, Start Num: 5

Candidate Starts for Axym_37:

(Start: 5 @27139 has 36 MA's), (6, 27121), (11, 27079), (21, 27013), (24, 26998), (25, 26995),

Gene: Biskit_39 Start: 27114, Stop: 26956, Start Num: 5

Candidate Starts for Biskit_39:

(Start: 5 @27114 has 36 MA's), (6, 27096), (14, 27030), (16, 27024), (24, 26973), (25, 26970),

Gene: Blondies_39 Start: 27432, Stop: 27274, Start Num: 5

Candidate Starts for Blondies_39:

(Start: 5 @27432 has 36 MA's), (6, 27414), (14, 27348), (16, 27342), (24, 27291), (25, 27288),

Gene: BobRoss2024_52 Start: 46394, Stop: 46236, Start Num: 5

Candidate Starts for BobRoss2024_52:

(4, 46397), (Start: 5 @46394 has 36 MA's), (24, 46253),

Gene: Boog_61 Start: 40730, Stop: 40891, Start Num: 5

Candidate Starts for Boog_61:

(Start: 5 @40730 has 36 MA's), (12, 40802), (15, 40826), (16, 40829), (17, 40832), (18, 40841),

Gene: BronxBay_60 Start: 40986, Stop: 41147, Start Num: 5

Candidate Starts for BronxBay_60:

(Start: 5 @40986 has 36 MA's), (12, 41058), (15, 41082), (16, 41085), (17, 41088), (18, 41097),

Gene: Burnsey_37 Start: 27152, Stop: 26994, Start Num: 5

Candidate Starts for Burnsey_37:

(Start: 5 @27152 has 36 MA's), (6, 27134), (11, 27092), (24, 27011), (25, 27008),

Gene: Buttrmlkdreams_39 Start: 27438, Stop: 27280, Start Num: 5

Candidate Starts for Buttrmlkdreams_39:

(Start: 5 @27438 has 36 MA's), (6, 27420), (13, 27357), (25, 27294),

Gene: Carsonalex_41 Start: 27189, Stop: 27031, Start Num: 5

Candidate Starts for Carsonalex_41:

(Start: 5 @27189 has 36 MA's), (6, 27171), (11, 27129), (24, 27048), (25, 27045),

Gene: Cozz_36 Start: 26749, Stop: 26591, Start Num: 5

Candidate Starts for Cozz_36:

(Start: 5 @26749 has 36 MA's), (6, 26731), (11, 26689), (21, 26623), (24, 26608), (25, 26605),

Gene: Djungelskog_59 Start: 40985, Stop: 41146, Start Num: 5

Candidate Starts for Djungelskog_59:

(Start: 5 @40985 has 36 MA's), (12, 41057), (15, 41081), (16, 41084), (17, 41087), (18, 41096),

Gene: DocB7_037 Start: 37679, Stop: 37524, Start Num: 5

Candidate Starts for DocB7_037:

(Start: 5 @37679 has 36 MA's), (6, 37661), (18, 37574),

Gene: DoctorPepper_59 Start: 40690, Stop: 40851, Start Num: 5

Candidate Starts for DoctorPepper_59:

(Start: 5 @40690 has 36 MA's), (12, 40762), (15, 40786), (16, 40789), (17, 40792), (18, 40801),

Gene: Egad_60 Start: 40987, Stop: 41148, Start Num: 5

Candidate Starts for Egad_60:

(Start: 5 @40987 has 36 MA's), (12, 41059), (15, 41083), (16, 41086), (17, 41089), (18, 41098),

Gene: Elliott_38 Start: 27160, Stop: 27002, Start Num: 5

Candidate Starts for Elliott_38:

(Start: 5 @27160 has 36 MA's), (6, 27142), (11, 27100), (21, 27034), (24, 27019), (25, 27016),

Gene: Fresco_83 Start: 60385, Stop: 60230, Start Num: 5

Candidate Starts for Fresco_83:

(1, 60853), (Start: 5 @60385 has 36 MA's), (17, 60292), (22, 60253), (24, 60247), (25, 60244),

Gene: GMA3_46 Start: 44762, Stop: 44610, Start Num: 5

Candidate Starts for GMA3_46:

(Start: 5 @44762 has 36 MA's),

Gene: GoldHunter_39 Start: 27161, Stop: 27003, Start Num: 5

Candidate Starts for GoldHunter_39:

(Start: 5 @27161 has 36 MA's), (6, 27143), (11, 27101), (21, 27035), (24, 27020), (25, 27017),

Gene: GordDuk1_44 Start: 42833, Stop: 42663, Start Num: 5

Candidate Starts for GordDuk1_44:

(Start: 5 @42833 has 36 MA's), (20, 42707), (23, 42689), (27, 42671),

Gene: GordTnk2_44 Start: 42811, Stop: 42629, Start Num: 5

Candidate Starts for GordTnk2_44:

(Start: 5 @42811 has 36 MA's), (8, 42760), (9, 42745), (20, 42673), (23, 42655), (27, 42637),

Gene: HerbBucket_59 Start: 40727, Stop: 40888, Start Num: 5

Candidate Starts for HerbBucket_59:

(Start: 5 @40727 has 36 MA's), (12, 40799), (15, 40823), (16, 40826), (17, 40829), (18, 40838),

Gene: Horseradish_39 Start: 26966, Stop: 26808, Start Num: 5

Candidate Starts for Horseradish_39:

(Start: 5 @26966 has 36 MA's), (6, 26948), (13, 26885), (25, 26822),

Gene: Ligma_83 Start: 60379, Stop: 60224, Start Num: 5

Candidate Starts for Ligma_83:

(1, 60847), (Start: 5 @60379 has 36 MA's), (17, 60286), (22, 60247), (24, 60241), (25, 60238),

Gene: Linda_60 Start: 40983, Stop: 41144, Start Num: 5

Candidate Starts for Linda_60:

(Start: 5 @40983 has 36 MA's), (12, 41055), (15, 41079), (16, 41082), (17, 41085), (18, 41094),

Gene: MScarn_40 Start: 27106, Stop: 26948, Start Num: 5

Candidate Starts for MScarn_40:

(Start: 5 @27106 has 36 MA's), (6, 27088), (13, 27025), (25, 26962),

Gene: Michelle_60 Start: 40985, Stop: 41146, Start Num: 5

Candidate Starts for Michelle_60:

(Start: 5 @40985 has 36 MA's), (12, 41057), (15, 41081), (16, 41084), (17, 41087), (18, 41096),

Gene: MrAaronian_60 Start: 40985, Stop: 41146, Start Num: 5

Candidate Starts for MrAaronian_60:

(Start: 5 @40985 has 36 MA's), (12, 41057), (15, 41081), (16, 41084), (17, 41087), (18, 41096),

Gene: MunkgeeRoachy_36 Start: 26623, Stop: 26465, Start Num: 5

Candidate Starts for MunkgeeRoachy_36:

(Start: 5 @26623 has 36 MA's), (6, 26605), (11, 26563), (24, 26482), (25, 26479),

Gene: Natasha_60 Start: 40720, Stop: 40878, Start Num: 5

Candidate Starts for Natasha_60:

(Start: 5 @40720 has 36 MA's), (6, 40738), (12, 40789), (18, 40828), (22, 40855),

Gene: Nina_37 Start: 27285, Stop: 27127, Start Num: 5

Candidate Starts for Nina_37:

(Start: 5 @27285 has 36 MA's), (6, 27267), (11, 27225), (24, 27144), (25, 27141),

Gene: PhrostedPhlake_68 Start: 41801, Stop: 41962, Start Num: 5

Candidate Starts for PhrostedPhlake_68:

(Start: 5 @41801 has 36 MA's), (6, 41819), (16, 41894), (24, 41945),

Gene: ProfFrink_60 Start: 40986, Stop: 41147, Start Num: 5

Candidate Starts for ProfFrink_60:

(Start: 5 @40986 has 36 MA's), (12, 41058), (15, 41082), (16, 41085), (17, 41088), (18, 41097),

Gene: PsychoKiller_37 Start: 27161, Stop: 27003, Start Num: 5

Candidate Starts for PsychoKiller_37:

(Start: 5 @27161 has 36 MA's), (6, 27143), (11, 27101), (21, 27035), (24, 27020), (25, 27017),

Gene: Quasar_38 Start: 27709, Stop: 27551, Start Num: 5

Candidate Starts for Quasar_38:

(Start: 5 @27709 has 36 MA's), (6, 27691), (11, 27649), (21, 27583), (24, 27568), (25, 27565),

Gene: Raunak_62 Start: 40683, Stop: 40844, Start Num: 5

Candidate Starts for Raunak_62:

(Start: 5 @40683 has 36 MA's), (12, 40755), (15, 40779), (16, 40782), (17, 40785), (18, 40794),

Gene: RedBaron_40 Start: 27398, Stop: 27240, Start Num: 5

Candidate Starts for RedBaron_40:

(Start: 5 @27398 has 36 MA's), (6, 27380), (11, 27338), (21, 27272), (24, 27257), (25, 27254),

Gene: RustyBoy_61 Start: 40919, Stop: 41077, Start Num: 5

Candidate Starts for RustyBoy_61:

(Start: 5 @40919 has 36 MA's), (7, 40940), (12, 40988), (18, 41027), (22, 41054), (24, 41060),

Gene: Salk_60 Start: 40983, Stop: 41144, Start Num: 5

Candidate Starts for Salk_60:

(Start: 5 @40983 has 36 MA's), (12, 41055), (15, 41079), (16, 41082), (17, 41085), (18, 41094),

Gene: Shatter_83 Start: 60379, Stop: 60224, Start Num: 5

Candidate Starts for Shatter_83:

(1, 60847), (Start: 5 @60379 has 36 MA's), (17, 60286), (22, 60247), (24, 60241), (25, 60238),

Gene: SheckWes_45 Start: 30252, Stop: 30079, Start Num: 5

Candidate Starts for SheckWes_45:

(Start: 5 @30252 has 36 MA's), (8, 30201), (12, 30171), (17, 30141), (18, 30132), (19, 30129),

Gene: Shiba_59 Start: 40683, Stop: 40844, Start Num: 5

Candidate Starts for Shiba_59:

(Start: 5 @40683 has 36 MA's), (12, 40755), (15, 40779), (16, 40782), (17, 40785), (18, 40794),

Gene: SketchMex_37 Start: 27114, Stop: 26956, Start Num: 5

Candidate Starts for SketchMex_37:

(Start: 5 @27114 has 36 MA's), (6, 27096), (14, 27030), (16, 27024), (24, 26973), (25, 26970),

Gene: Sloopyjoe_60 Start: 40987, Stop: 41148, Start Num: 5

Candidate Starts for Sloopyjoe_60:

(Start: 5 @40987 has 36 MA's), (12, 41059), (15, 41083), (16, 41086), (17, 41089), (18, 41098),

Gene: Socotra_39 Start: 27160, Stop: 27002, Start Num: 5

Candidate Starts for Socotra_39:

(Start: 5 @27160 has 36 MA's), (6, 27142), (11, 27100), (24, 27019), (25, 27016),

Gene: Sopespian_37 Start: 27162, Stop: 27004, Start Num: 5

Candidate Starts for Sopespian_37:

(Start: 5 @27162 has 36 MA's), (6, 27144), (11, 27102), (21, 27036), (24, 27021), (25, 27018),

Gene: StarLord_60 Start: 40986, Stop: 41147, Start Num: 5

Candidate Starts for StarLord_60:

(Start: 5 @40986 has 36 MA's), (12, 41058), (15, 41082), (16, 41085), (17, 41088), (18, 41097),

Gene: Starburst_39 Start: 27155, Stop: 26997, Start Num: 5

Candidate Starts for Starburst_39:

(Start: 5 @27155 has 36 MA's), (6, 27137), (11, 27095), (21, 27029), (24, 27014), (25, 27011),

Gene: Stayer_60 Start: 40983, Stop: 41144, Start Num: 5

Candidate Starts for Stayer_60:

(Start: 5 @40983 has 36 MA's), (12, 41055), (15, 41079), (16, 41082), (17, 41085), (18, 41094),

Gene: SweatNTears_39 Start: 27058, Stop: 26900, Start Num: 5

Candidate Starts for SweatNTears_39:

(Start: 5 @27058 has 36 MA's), (6, 27040), (11, 26998), (21, 26932), (24, 26917), (25, 26914),

Gene: Trogglehumper_90 Start: 66999, Stop: 66847, Start Num: 5
Candidate Starts for Trogglehumper_90:
(3, 67017), (Start: 5 @66999 has 36 MA's), (10, 66942), (18, 66897), (22, 66867),

Gene: Troje_39 Start: 27463, Stop: 27305, Start Num: 5
Candidate Starts for Troje_39:
(Start: 5 @27463 has 36 MA's), (6, 27445), (14, 27379), (16, 27373), (24, 27322), (25, 27319),

Gene: Typhonomachy_37 Start: 26780, Stop: 26622, Start Num: 5
Candidate Starts for Typhonomachy_37:
(Start: 5 @26780 has 36 MA's), (6, 26762), (11, 26720), (24, 26639), (25, 26636),

Gene: UmaThurman_64 Start: 41829, Stop: 41990, Start Num: 5
Candidate Starts for UmaThurman_64:
(Start: 5 @41829 has 36 MA's), (6, 41847), (16, 41922), (24, 41973),

Gene: Yummy_39 Start: 27080, Stop: 26922, Start Num: 5
Candidate Starts for Yummy_39:
(Start: 5 @27080 has 36 MA's), (6, 27062), (13, 26999), (25, 26936),