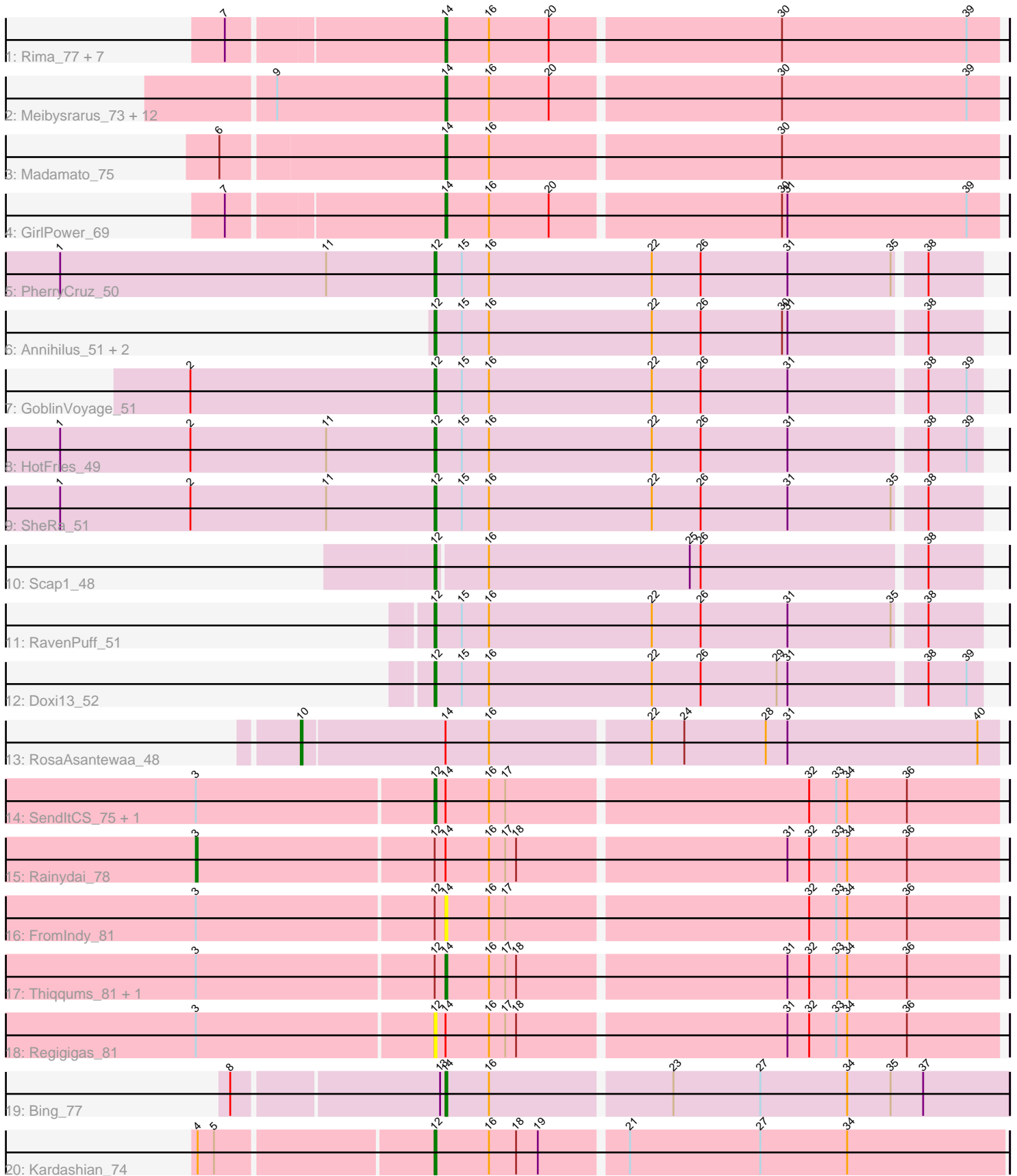


Pham 206972



Note: Tracks are now grouped by subcluster and scaled. Switching in subcluster is indicated by changes in track color. Track scale is now set by default to display the region 30 bp upstream of start 1 to 30 bp downstream of the last possible start. If this default region is judged to be packed too tightly with annotated starts, the track will be further scaled to only show that region of the ORF with annotated starts. This action will be indicated by adding "Zoomed" to the title. For starts, yellow indicates the location of called starts comprised solely of Glimmer/GeneMark auto-annotations, green indicates the location of called starts with at least 1 manual gene annotation.

Pham 206972 Report

This analysis was run 02/22/25 on database version 588.

Pham number 206972 has 43 members, 2 are drafts.

Phages represented in each track:

- Track 1 : Rima_77, HazuAndZazu_72, Soshi_73, FrodoSwaggins_72, DrGrey_70, Namu_78, Popy_72, IceWarrior_76
- Track 2 : Meibysrarus_73, Esketit_71, Spectropatronm_74, FidgetOrca_77, TaidaOne_76, Jaylociraptor_75, Maya_75, TonyStarch_74, OlympicHelado_77, Hoshi_76, TieDye_71, Indigenous_77, CherryBlossom_75
- Track 3 : Madamoto_75
- Track 4 : GirlPower_69
- Track 5 : PherryCruz_50
- Track 6 : Annihilus_51, Bilo_49, Moozy_50
- Track 7 : GoblinVoyage_51
- Track 8 : HotFries_49
- Track 9 : SheRa_51
- Track 10 : Scap1_48
- Track 11 : RavenPuff_51
- Track 12 : Doxi13_52
- Track 13 : RosaAsantewaa_48
- Track 14 : SendItCS_75, Miek_77
- Track 15 : Rainydai_78
- Track 16 : FromIndy_81
- Track 17 : Thiqqums_81, CricKo_81
- Track 18 : Regigigas_81
- Track 19 : Bing_77
- Track 20 : Kardashian_74

Summary of Final Annotations (See graph section above for start numbers):

The start number called the most often in the published annotations is 14, it was called in 26 of the 41 non-draft genes in the pham.

Genes that call this "Most Annotated" start:

- Bing_77, CherryBlossom_75, CricKo_81, DrGrey_70, Esketit_71, FidgetOrca_77, FrodoSwaggins_72, FromIndy_81, GirlPower_69, HazuAndZazu_72, Hoshi_76, IceWarrior_76, Indigenous_77, Jaylociraptor_75, Madamoto_75, Maya_75, Meibysrarus_73, Namu_78, OlympicHelado_77, Popy_72, Rima_77, Soshi_73,

Spectropatronm_74, TaidaOne_76, Thiqqums_81, TieDye_71, TonyStarch_74,

Genes that have the "Most Annotated" start but do not call it:

- Miek_77, Rainydai_78, Regigigas_81, RosaAsantewaa_48, SendItCS_75,

Genes that do not have the "Most Annotated" start:

- Annihilus_51, Bilo_49, Doxi13_52, GoblinVoyage_51, HotFries_49, Kardashian_74, Moozy_50, PherryCruz_50, RavenPuff_51, Scap1_48, SheRa_51,

Summary by start number:

Start 3:

- Found in 7 of 43 (16.3%) of genes in pham
- Manual Annotations of this start: 1 of 41
- Called 14.3% of time when present
- Phage (with cluster) where this start called: Rainydai_78 (BI4),

Start 10:

- Found in 1 of 43 (2.3%) of genes in pham
- Manual Annotations of this start: 1 of 41
- Called 100.0% of time when present
- Phage (with cluster) where this start called: RosaAsantewaa_48 (BI2),

Start 12:

- Found in 18 of 43 (41.9%) of genes in pham
- Manual Annotations of this start: 13 of 41
- Called 77.8% of time when present
- Phage (with cluster) where this start called: Annihilus_51 (BI2), Bilo_49 (BI2), Doxi13_52 (BI2), GoblinVoyage_51 (BI2), HotFries_49 (BI2), Kardashian_74 (BI6), Miek_77 (BI4), Moozy_50 (BI2), PherryCruz_50 (BI2), RavenPuff_51 (BI2), Regigigas_81 (BI4), Scap1_48 (BI2), SendItCS_75 (BI4), SheRa_51 (BI2),

Start 14:

- Found in 32 of 43 (74.4%) of genes in pham
- Manual Annotations of this start: 26 of 41
- Called 84.4% of time when present
- Phage (with cluster) where this start called: Bing_77 (BI5), CherryBlossom_75 (BI1), CricKo_81 (BI4), DrGrey_70 (BI1), Esketit_71 (BI1), FidgetOrca_77 (BI1), FrodoSwaggins_72 (BI1), FromIndy_81 (BI4), GirlPower_69 (BI1), HazuAndZazu_72 (BI1), Hoshi_76 (BI1), IceWarrior_76 (BI1), Indigenous_77 (BI1), Jaylociraptor_75 (BI1), Madamato_75 (BI1), Maya_75 (BI1), Meibysrarus_73 (BI1), Namu_78 (BI1), OlympicHelado_77 (BI1), Popy_72 (BI1), Rima_77 (BI1), Soshi_73 (BI1), Spectropatronm_74 (BI1), TaidaOne_76 (BI1), Thiqqums_81 (BI4), TieDye_71 (BI1), TonyStarch_74 (BI1),

Summary by clusters:

There are 5 clusters represented in this pham: BI6, BI4, BI5, BI2, BI1,

Info for manual annotations of cluster BI1:

- Start number 14 was manually annotated 23 times for cluster BI1.

Info for manual annotations of cluster BI2:

- Start number 10 was manually annotated 1 time for cluster BI2.
- Start number 12 was manually annotated 10 times for cluster BI2.

Info for manual annotations of cluster BI4:

- Start number 3 was manually annotated 1 time for cluster BI4.
- Start number 12 was manually annotated 2 times for cluster BI4.
- Start number 14 was manually annotated 2 times for cluster BI4.

Info for manual annotations of cluster BI5:

- Start number 14 was manually annotated 1 time for cluster BI5.

Info for manual annotations of cluster BI6:

- Start number 12 was manually annotated 1 time for cluster BI6.

Gene Information:

Gene: Annihilus_51 Start: 36508, Stop: 36804, Start Num: 12

Candidate Starts for Annihilus_51:

(Start: 12 @36508 has 13 MA's), (15, 36523), (16, 36538), (22, 36628), (26, 36655), (30, 36700), (31, 36703), (38, 36775),

Gene: Bilo_49 Start: 36687, Stop: 36980, Start Num: 12

Candidate Starts for Bilo_49:

(Start: 12 @36687 has 13 MA's), (15, 36702), (16, 36717), (22, 36804), (26, 36831), (30, 36876), (31, 36879), (38, 36951),

Gene: Bing_77 Start: 47546, Stop: 47851, Start Num: 14

Candidate Starts for Bing_77:

(8, 47435), (13, 47543), (Start: 14 @47546 has 26 MA's), (16, 47570), (23, 47666), (27, 47714), (34, 47762), (35, 47786), (37, 47804),

Gene: CherryBlossom_75 Start: 46571, Stop: 46870, Start Num: 14

Candidate Starts for CherryBlossom_75:

(9, 46478), (Start: 14 @46571 has 26 MA's), (16, 46595), (20, 46628), (30, 46751), (39, 46853),

Gene: CricKo_81 Start: 48333, Stop: 48632, Start Num: 14

Candidate Starts for CricKo_81:

(Start: 3 @48198 has 1 MA's), (Start: 12 @48327 has 13 MA's), (Start: 14 @48333 has 26 MA's), (16, 48357), (17, 48366), (18, 48372), (31, 48516), (32, 48528), (33, 48543), (34, 48549), (36, 48582),

Gene: Doxi13_52 Start: 36646, Stop: 36942, Start Num: 12

Candidate Starts for Doxi13_52:

(Start: 12 @36646 has 13 MA's), (15, 36661), (16, 36676), (22, 36766), (26, 36793), (29, 36835), (31, 36841), (38, 36913), (39, 36934),

Gene: DrGrey_70 Start: 46918, Stop: 47217, Start Num: 14

Candidate Starts for DrGrey_70:

(7, 46804), (Start: 14 @46918 has 26 MA's), (16, 46942), (20, 46975), (30, 47098), (39, 47200),

Gene: Esketit_71 Start: 45672, Stop: 45971, Start Num: 14

Candidate Starts for Esketit_71:

(9, 45579), (Start: 14 @45672 has 26 MA's), (16, 45696), (20, 45729), (30, 45852), (39, 45954),

Gene: FidgetOrca_77 Start: 47122, Stop: 47421, Start Num: 14

Candidate Starts for FidgetOrca_77:

(9, 47029), (Start: 14 @47122 has 26 MA's), (16, 47146), (20, 47179), (30, 47302), (39, 47404),

Gene: FrodoSwaggins_72 Start: 47312, Stop: 47611, Start Num: 14

Candidate Starts for FrodoSwaggins_72:

(7, 47198), (Start: 14 @47312 has 26 MA's), (16, 47336), (20, 47369), (30, 47492), (39, 47594),

Gene: FromIndy_81 Start: 47970, Stop: 48269, Start Num: 14

Candidate Starts for FromIndy_81:

(Start: 3 @47835 has 1 MA's), (Start: 12 @47964 has 13 MA's), (Start: 14 @47970 has 26 MA's), (16, 47994), (17, 48003), (32, 48165), (33, 48180), (34, 48186), (36, 48219),

Gene: GirlPower_69 Start: 46861, Stop: 47160, Start Num: 14

Candidate Starts for GirlPower_69:

(7, 46747), (Start: 14 @46861 has 26 MA's), (16, 46885), (20, 46918), (30, 47041), (31, 47044), (39, 47143),

Gene: GoblinVoyage_51 Start: 36491, Stop: 36787, Start Num: 12

Candidate Starts for GoblinVoyage_51:

(2, 36356), (Start: 12 @36491 has 13 MA's), (15, 36506), (16, 36521), (22, 36611), (26, 36638), (31, 36686), (38, 36758), (39, 36779),

Gene: HazuAndZazu_72 Start: 46979, Stop: 47278, Start Num: 14

Candidate Starts for HazuAndZazu_72:

(7, 46865), (Start: 14 @46979 has 26 MA's), (16, 47003), (20, 47036), (30, 47159), (39, 47261),

Gene: Hoshi_76 Start: 46735, Stop: 47034, Start Num: 14

Candidate Starts for Hoshi_76:

(9, 46642), (Start: 14 @46735 has 26 MA's), (16, 46759), (20, 46792), (30, 46915), (39, 47017),

Gene: HotFries_49 Start: 36681, Stop: 36977, Start Num: 12

Candidate Starts for HotFries_49:

(1, 36474), (2, 36546), (11, 36621), (Start: 12 @36681 has 13 MA's), (15, 36696), (16, 36711), (22, 36801), (26, 36828), (31, 36876), (38, 36948), (39, 36969),

Gene: IceWarrior_76 Start: 46810, Stop: 47109, Start Num: 14

Candidate Starts for IceWarrior_76:

(7, 46696), (Start: 14 @46810 has 26 MA's), (16, 46834), (20, 46867), (30, 46990), (39, 47092),

Gene: Indigenous_77 Start: 47126, Stop: 47425, Start Num: 14

Candidate Starts for Indigenous_77:

(9, 47033), (Start: 14 @47126 has 26 MA's), (16, 47150), (20, 47183), (30, 47306), (39, 47408),

Gene: Jaylociraptor_75 Start: 46707, Stop: 47006, Start Num: 14

Candidate Starts for Jaylociraptor_75:

(9, 46614), (Start: 14 @46707 has 26 MA's), (16, 46731), (20, 46764), (30, 46887), (39, 46989),

Gene: Kardashian_74 Start: 47955, Stop: 48263, Start Num: 12

Candidate Starts for Kardashian_74:

(4, 47832), (5, 47841), (Start: 12 @47955 has 13 MA's), (16, 47985), (18, 48000), (19, 48012), (21, 48057), (27, 48129), (34, 48177),

Gene: Madamoto_75 Start: 46748, Stop: 47047, Start Num: 14

Candidate Starts for Madamoto_75:

(6, 46628), (Start: 14 @46748 has 26 MA's), (16, 46772), (30, 46928),

Gene: Maya_75 Start: 46721, Stop: 47020, Start Num: 14

Candidate Starts for Maya_75:

(9, 46628), (Start: 14 @46721 has 26 MA's), (16, 46745), (20, 46778), (30, 46901), (39, 47003),

Gene: Meibysrarus_73 Start: 46105, Stop: 46404, Start Num: 14

Candidate Starts for Meibysrarus_73:

(9, 46012), (Start: 14 @46105 has 26 MA's), (16, 46129), (20, 46162), (30, 46285), (39, 46387),

Gene: Miek_77 Start: 47145, Stop: 47450, Start Num: 12

Candidate Starts for Miek_77:

(Start: 3 @47016 has 1 MA's), (Start: 12 @47145 has 13 MA's), (Start: 14 @47151 has 26 MA's), (16, 47175), (17, 47184), (32, 47346), (33, 47361), (34, 47367), (36, 47400),

Gene: Moozy_50 Start: 36492, Stop: 36788, Start Num: 12

Candidate Starts for Moozy_50:

(Start: 12 @36492 has 13 MA's), (15, 36507), (16, 36522), (22, 36612), (26, 36639), (30, 36684), (31, 36687), (38, 36759),

Gene: Namo_78 Start: 47472, Stop: 47771, Start Num: 14

Candidate Starts for Namo_78:

(7, 47358), (Start: 14 @47472 has 26 MA's), (16, 47496), (20, 47529), (30, 47652), (39, 47754),

Gene: OlympicHelado_77 Start: 47197, Stop: 47496, Start Num: 14

Candidate Starts for OlympicHelado_77:

(9, 47104), (Start: 14 @47197 has 26 MA's), (16, 47221), (20, 47254), (30, 47377), (39, 47479),

Gene: PherryCruz_50 Start: 36673, Stop: 36969, Start Num: 12

Candidate Starts for PherryCruz_50:

(1, 36466), (11, 36613), (Start: 12 @36673 has 13 MA's), (15, 36688), (16, 36703), (22, 36793), (26, 36820), (31, 36868), (35, 36925), (38, 36940),

Gene: Popy_72 Start: 47312, Stop: 47611, Start Num: 14

Candidate Starts for Popy_72:

(7, 47198), (Start: 14 @47312 has 26 MA's), (16, 47336), (20, 47369), (30, 47492), (39, 47594),

Gene: Rainydai_78 Start: 48198, Stop: 48632, Start Num: 3

Candidate Starts for Rainydai_78:

(Start: 3 @48198 has 1 MA's), (Start: 12 @48327 has 13 MA's), (Start: 14 @48333 has 26 MA's), (16, 48357), (17, 48366), (18, 48372), (31, 48516), (32, 48528), (33, 48543), (34, 48549), (36, 48582),

Gene: RavenPuff_51 Start: 36642, Stop: 36938, Start Num: 12

Candidate Starts for RavenPuff_51:

(Start: 12 @36642 has 13 MA's), (15, 36657), (16, 36672), (22, 36762), (26, 36789), (31, 36837), (35, 36894), (38, 36909),

Gene: Regigigas_81 Start: 47939, Stop: 48244, Start Num: 12

Candidate Starts for Regigigas_81:

(Start: 3 @47810 has 1 MA's), (Start: 12 @47939 has 13 MA's), (Start: 14 @47945 has 26 MA's), (16, 47969), (17, 47978), (18, 47984), (31, 48128), (32, 48140), (33, 48155), (34, 48161), (36, 48194),

Gene: Rima_77 Start: 47472, Stop: 47771, Start Num: 14

Candidate Starts for Rima_77:

(7, 47358), (Start: 14 @47472 has 26 MA's), (16, 47496), (20, 47529), (30, 47652), (39, 47754),

Gene: RosaAsantewaa_48 Start: 35993, Stop: 36370, Start Num: 10

Candidate Starts for RosaAsantewaa_48:

(Start: 10 @35993 has 1 MA's), (Start: 14 @36071 has 26 MA's), (16, 36095), (22, 36179), (24, 36197), (28, 36242), (31, 36254), (40, 36359),

Gene: Scap1_48 Start: 36052, Stop: 36345, Start Num: 12

Candidate Starts for Scap1_48:

(Start: 12 @36052 has 13 MA's), (16, 36079), (25, 36190), (26, 36196), (38, 36316),

Gene: SendItCS_75 Start: 47133, Stop: 47438, Start Num: 12

Candidate Starts for SendItCS_75:

(Start: 3 @47004 has 1 MA's), (Start: 12 @47133 has 13 MA's), (Start: 14 @47139 has 26 MA's), (16, 47163), (17, 47172), (32, 47334), (33, 47349), (34, 47355), (36, 47388),

Gene: SheRa_51 Start: 36558, Stop: 36854, Start Num: 12

Candidate Starts for SheRa_51:

(1, 36351), (2, 36423), (11, 36498), (Start: 12 @36558 has 13 MA's), (15, 36573), (16, 36588), (22, 36678), (26, 36705), (31, 36753), (35, 36810), (38, 36825),

Gene: Soshi_73 Start: 47177, Stop: 47476, Start Num: 14

Candidate Starts for Soshi_73:

(7, 47063), (Start: 14 @47177 has 26 MA's), (16, 47201), (20, 47234), (30, 47357), (39, 47459),

Gene: Spectropatronm_74 Start: 46714, Stop: 47013, Start Num: 14

Candidate Starts for Spectropatronm_74:

(9, 46621), (Start: 14 @46714 has 26 MA's), (16, 46738), (20, 46771), (30, 46894), (39, 46996),

Gene: TaidaOne_76 Start: 47610, Stop: 47909, Start Num: 14

Candidate Starts for TaidaOne_76:

(9, 47517), (Start: 14 @47610 has 26 MA's), (16, 47634), (20, 47667), (30, 47790), (39, 47892),

Gene: Thiqqums_81 Start: 48333, Stop: 48632, Start Num: 14

Candidate Starts for Thiqqums_81:

(Start: 3 @48198 has 1 MA's), (Start: 12 @48327 has 13 MA's), (Start: 14 @48333 has 26 MA's), (16, 48357), (17, 48366), (18, 48372), (31, 48516), (32, 48528), (33, 48543), (34, 48549), (36, 48582),

Gene: TieDye_71 Start: 46035, Stop: 46334, Start Num: 14

Candidate Starts for TieDye_71:

(9, 45942), (Start: 14 @46035 has 26 MA's), (16, 46059), (20, 46092), (30, 46215), (39, 46317),

Gene: TonyStarch_74 Start: 46477, Stop: 46776, Start Num: 14

Candidate Starts for TonyStarch_74:

(9, 46384), (Start: 14 @46477 has 26 MA's), (16, 46501), (20, 46534), (30, 46657), (39, 46759),