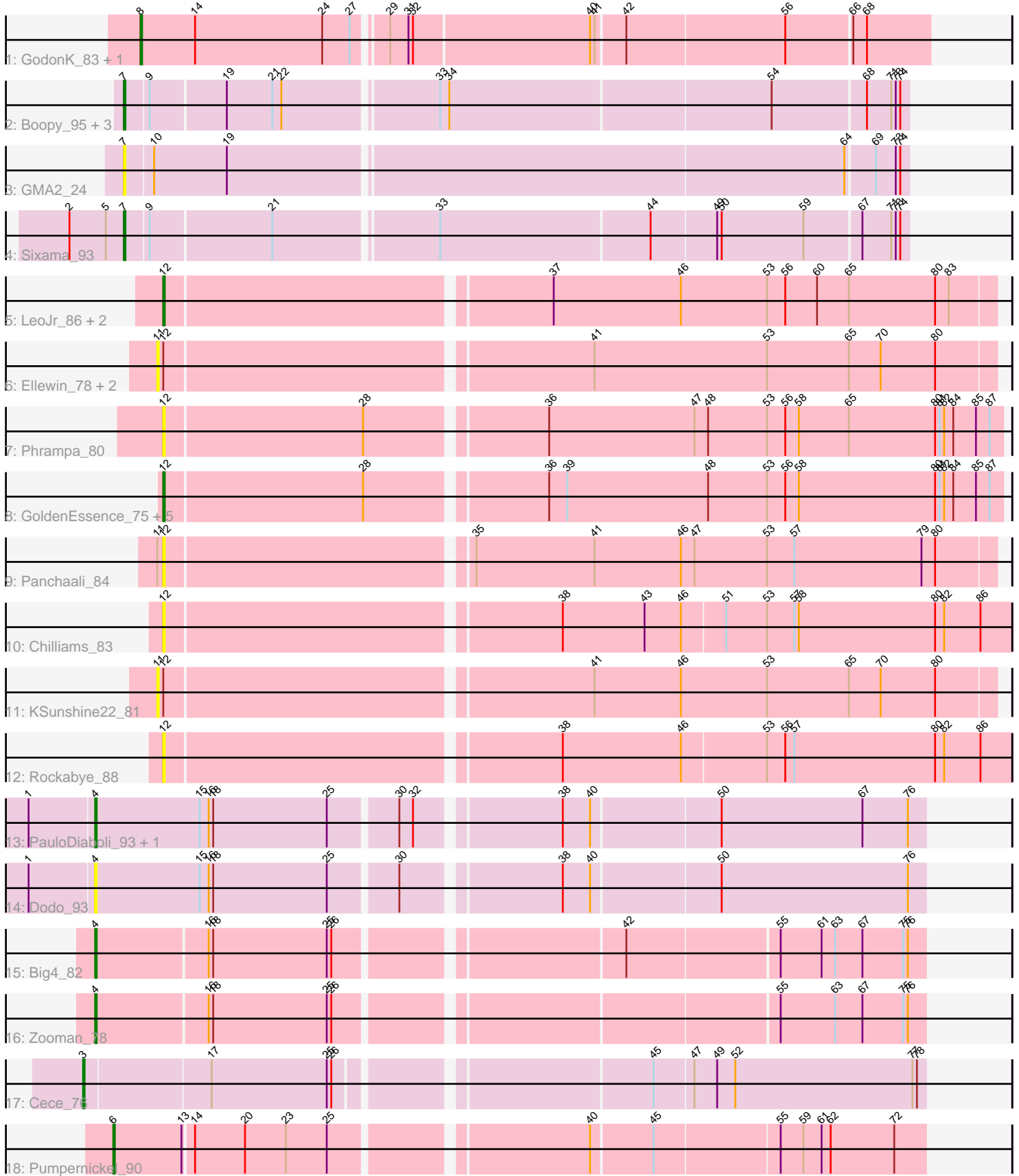


Pham 207060



Note: Tracks are now grouped by subcluster and scaled. Switching in subcluster is indicated by changes in track color. Track scale is now set by default to display the region 30 bp upstream of start 1 to 30 bp downstream of the last possible start. If this default region is judged to be packed too tightly with annotated starts, the track will be further scaled to only show that region of the ORF with annotated starts. This action will be indicated by adding "Zoomed" to the title. For starts, yellow indicates the location of called starts comprised solely of Glimmer/GeneMark auto-annotations, green indicates the location of called starts with at least 1 manual gene annotation.

Pham 207060 Report

This analysis was run 02/22/25 on database version 588.

Pham number 207060 has 32 members, 15 are drafts.

Phages represented in each track:

- Track 1 : GodonK_83, Phendrix_81
- Track 2 : Boopy_95, Forza_95, BlueNGold_94, Mareelih_93
- Track 3 : GMA2_24
- Track 4 : Sixama_93
- Track 5 : LeoJr_86, Atuin_81, ReginaGlobina_86
- Track 6 : Ellewin_78, DunneganBoMo_80, WaddleDee_80
- Track 7 : Phrampa_80
- Track 8 : GoldenEssence_75, Patbob_87, Mimi_86, Bloom_90, Racecar_87, Talia1610_86
- Track 9 : Panchaali_84
- Track 10 : Chilliams_83
- Track 11 : KSunshine22_81
- Track 12 : Rockabye_88
- Track 13 : PauloDiaboli_93, A3Wally_93
- Track 14 : Dodo_93
- Track 15 : Big4_82
- Track 16 : Zooman_78
- Track 17 : Cece_76
- Track 18 : Pumpnickel_90

Summary of Final Annotations (See graph section above for start numbers):

The start number called the most often in the published annotations is 7, it was called in 5 of the 17 non-draft genes in the pham.

Genes that call this "Most Annotated" start:

- BlueNGold_94, Boopy_95, Forza_95, GMA2_24, Mareelih_93, Sixama_93,

Genes that have the "Most Annotated" start but do not call it:

-

Genes that do not have the "Most Annotated" start:

- A3Wally_93, Atuin_81, Big4_82, Bloom_90, Cece_76, Chilliams_83, Dodo_93, DunneganBoMo_80, Ellewin_78, GodonK_83, GoldenEssence_75, KSunshine22_81,

LeoJr_86, Mimi_86, Panchaali_84, Patbob_87, PauloDiaboli_93, Phendrix_81, Phrampa_80, Pumpernickel_90, Racecar_87, ReginaGlobina_86, Rockabye_88, Talia1610_86, WaddleDee_80, Zooman_78,

Summary by start number:

Start 3:

- Found in 1 of 32 (3.1%) of genes in pham
- Manual Annotations of this start: 1 of 17
- Called 100.0% of time when present
- Phage (with cluster) where this start called: Cece_76 (GD3),

Start 4:

- Found in 5 of 32 (15.6%) of genes in pham
- Manual Annotations of this start: 4 of 17
- Called 100.0% of time when present
- Phage (with cluster) where this start called: A3Wally_93 (GD1), Big4_82 (GD2), Dodo_93 (GD1), PauloDiaboli_93 (GD1), Zooman_78 (GD2),

Start 6:

- Found in 1 of 32 (3.1%) of genes in pham
- Manual Annotations of this start: 1 of 17
- Called 100.0% of time when present
- Phage (with cluster) where this start called: Pumpernickel_90 (GD4),

Start 7:

- Found in 6 of 32 (18.8%) of genes in pham
- Manual Annotations of this start: 5 of 17
- Called 100.0% of time when present
- Phage (with cluster) where this start called: BlueNGold_94 (DS), Boopy_95 (DS), Forza_95 (DS), GMA2_24 (DS), Mareelih_93 (DS), Sixama_93 (DS),

Start 8:

- Found in 2 of 32 (6.2%) of genes in pham
- Manual Annotations of this start: 2 of 17
- Called 100.0% of time when present
- Phage (with cluster) where this start called: GodonK_83 (DK), Phendrix_81 (DK),

Start 11:

- Found in 5 of 32 (15.6%) of genes in pham
- No Manual Annotations of this start.
- Called 80.0% of time when present
- Phage (with cluster) where this start called: DunneganBoMo_80 (FC), Ellewin_78 (FC), KSunshine22_81 (FC), WaddleDee_80 (FC),

Start 12:

- Found in 17 of 32 (53.1%) of genes in pham
- Manual Annotations of this start: 4 of 17
- Called 76.5% of time when present
- Phage (with cluster) where this start called: Atuin_81 (FC), Bloom_90 (FC), Chilliams_83 (FC), GoldenEssence_75 (FC), LeoJr_86 (FC), Mimi_86 (FC), Panchaali_84 (FC), Patbob_87 (FC), Phrampa_80 (FC), Racecar_87 (FC), ReginaGlobina_86 (FC), Rockabye_88 (FC), Talia1610_86 (FC),

Summary by clusters:

There are 7 clusters represented in this pham: GD1, GD2, GD3, GD4, DK, FC, DS,

Info for manual annotations of cluster DK:

- Start number 8 was manually annotated 2 times for cluster DK.

Info for manual annotations of cluster DS:

- Start number 7 was manually annotated 5 times for cluster DS.

Info for manual annotations of cluster FC:

- Start number 12 was manually annotated 4 times for cluster FC.

Info for manual annotations of cluster GD1:

- Start number 4 was manually annotated 2 times for cluster GD1.

Info for manual annotations of cluster GD2:

- Start number 4 was manually annotated 2 times for cluster GD2.

Info for manual annotations of cluster GD3:

- Start number 3 was manually annotated 1 time for cluster GD3.

Info for manual annotations of cluster GD4:

- Start number 6 was manually annotated 1 time for cluster GD4.

Gene Information:

Gene: A3Wally_93 Start: 50163, Stop: 50687, Start Num: 4

Candidate Starts for A3Wally_93:

(1, 50121), (Start: 4 @50163 has 4 MA's), (15, 50232), (16, 50238), (18, 50241), (25, 50316), (30, 50358), (32, 50367), (38, 50454), (40, 50472), (50, 50553), (67, 50646), (76, 50676),

Gene: Atuin_81 Start: 51497, Stop: 52030, Start Num: 12

Candidate Starts for Atuin_81:

(Start: 12 @51497 has 4 MA's), (37, 51740), (46, 51824), (53, 51881), (56, 51893), (60, 51914), (65, 51935), (80, 51992), (83, 52001),

Gene: Big4_82 Start: 49196, Stop: 49714, Start Num: 4

Candidate Starts for Big4_82:

(Start: 4 @49196 has 4 MA's), (16, 49268), (18, 49271), (25, 49346), (26, 49349), (42, 49523), (55, 49619), (61, 49646), (63, 49655), (67, 49673), (75, 49700), (76, 49703),

Gene: Bloom_90 Start: 52882, Stop: 53421, Start Num: 12

Candidate Starts for Bloom_90:

(Start: 12 @52882 has 4 MA's), (28, 53011), (36, 53122), (39, 53134), (48, 53227), (53, 53266), (56, 53278), (58, 53287), (80, 53377), (81, 53380), (82, 53383), (84, 53389), (85, 53404), (87, 53413),

Gene: BlueNGold_94 Start: 51477, Stop: 51971, Start Num: 7

Candidate Starts for BlueNGold_94:

(Start: 7 @51477 has 5 MA's), (9, 51492), (19, 51540), (21, 51570), (22, 51576), (33, 51672), (34, 51678), (54, 51885), (68, 51945), (71, 51960), (73, 51963), (74, 51966),

Gene: Boopy_95 Start: 51489, Stop: 51983, Start Num: 7

Candidate Starts for Boopy_95:

(Start: 7 @51489 has 5 MA's), (9, 51504), (19, 51552), (21, 51582), (22, 51588), (33, 51684), (34, 51690), (54, 51897), (68, 51957), (71, 51972), (73, 51975), (74, 51978),

Gene: Cece_76 Start: 45150, Stop: 45674, Start Num: 3

Candidate Starts for Cece_76:

(Start: 3 @45150 has 1 MA's), (17, 45231), (25, 45306), (26, 45309), (45, 45498), (47, 45522), (49, 45537), (52, 45549), (77, 45666), (78, 45669),

Gene: Chilliams_83 Start: 54759, Stop: 55301, Start Num: 12

Candidate Starts for Chilliams_83:

(Start: 12 @54759 has 4 MA's), (38, 55008), (43, 55062), (46, 55086), (51, 55113), (53, 55140), (57, 55158), (58, 55161), (80, 55251), (82, 55257), (86, 55281),

Gene: Dodo_93 Start: 50485, Stop: 51009, Start Num: 4

Candidate Starts for Dodo_93:

(1, 50443), (Start: 4 @50485 has 4 MA's), (15, 50554), (16, 50560), (18, 50563), (25, 50638), (30, 50680), (38, 50776), (40, 50794), (50, 50875), (76, 50998),

Gene: DunneganBoMo_80 Start: 48339, Stop: 48875, Start Num: 11

Candidate Starts for DunneganBoMo_80:

(11, 48339), (Start: 12 @48342 has 4 MA's), (41, 48612), (53, 48726), (65, 48780), (70, 48801), (80, 48837),

Gene: Ellewin_78 Start: 47934, Stop: 48470, Start Num: 11

Candidate Starts for Ellewin_78:

(11, 47934), (Start: 12 @47937 has 4 MA's), (41, 48207), (53, 48321), (65, 48375), (70, 48396), (80, 48432),

Gene: Forza_95 Start: 51405, Stop: 51899, Start Num: 7

Candidate Starts for Forza_95:

(Start: 7 @51405 has 5 MA's), (9, 51420), (19, 51468), (21, 51498), (22, 51504), (33, 51600), (34, 51606), (54, 51813), (68, 51873), (71, 51888), (73, 51891), (74, 51894),

Gene: GMA2_24 Start: 21753, Stop: 22253, Start Num: 7

Candidate Starts for GMA2_24:

(Start: 7 @21753 has 5 MA's), (10, 21771), (19, 21819), (64, 22215), (69, 22233), (73, 22245), (74, 22248),

Gene: GodonK_83 Start: 43126, Stop: 43626, Start Num: 8

Candidate Starts for GodonK_83:

(Start: 8 @43126 has 2 MA's), (14, 43162), (24, 43246), (27, 43264), (29, 43282), (31, 43294), (32, 43297), (40, 43411), (41, 43414), (42, 43432), (56, 43534), (66, 43576), (68, 43585),

Gene: GoldenEssence_75 Start: 46675, Stop: 47214, Start Num: 12

Candidate Starts for GoldenEssence_75:

(Start: 12 @46675 has 4 MA's), (28, 46804), (36, 46915), (39, 46927), (48, 47020), (53, 47059), (56, 47071), (58, 47080), (80, 47170), (81, 47173), (82, 47176), (84, 47182), (85, 47197), (87, 47206),

Gene: KSunshine22_81 Start: 49573, Stop: 50109, Start Num: 11
Candidate Starts for KSunshine22_81:
(11, 49573), (Start: 12 @49576 has 4 MA's), (41, 49846), (46, 49903), (53, 49960), (65, 50014), (70, 50035), (80, 50071),

Gene: LeoJr_86 Start: 51625, Stop: 52158, Start Num: 12
Candidate Starts for LeoJr_86:
(Start: 12 @51625 has 4 MA's), (37, 51868), (46, 51952), (53, 52009), (56, 52021), (60, 52042), (65, 52063), (80, 52120), (83, 52129),

Gene: Mareelih_93 Start: 50907, Stop: 51401, Start Num: 7
Candidate Starts for Mareelih_93:
(Start: 7 @50907 has 5 MA's), (9, 50922), (19, 50970), (21, 51000), (22, 51006), (33, 51102), (34, 51108), (54, 51315), (68, 51375), (71, 51390), (73, 51393), (74, 51396),

Gene: Mimi_86 Start: 52229, Stop: 52768, Start Num: 12
Candidate Starts for Mimi_86:
(Start: 12 @52229 has 4 MA's), (28, 52358), (36, 52469), (39, 52481), (48, 52574), (53, 52613), (56, 52625), (58, 52634), (80, 52724), (81, 52727), (82, 52730), (84, 52736), (85, 52751), (87, 52760),

Gene: Panchaali_84 Start: 49337, Stop: 49870, Start Num: 12
Candidate Starts for Panchaali_84:
(11, 49334), (Start: 12 @49337 has 4 MA's), (35, 49529), (41, 49607), (46, 49664), (47, 49673), (53, 49721), (57, 49739), (79, 49823), (80, 49832),

Gene: Patbob_87 Start: 53101, Stop: 53640, Start Num: 12
Candidate Starts for Patbob_87:
(Start: 12 @53101 has 4 MA's), (28, 53230), (36, 53341), (39, 53353), (48, 53446), (53, 53485), (56, 53497), (58, 53506), (80, 53596), (81, 53599), (82, 53602), (84, 53608), (85, 53623), (87, 53632),

Gene: PauloDiaboli_93 Start: 49520, Stop: 50044, Start Num: 4
Candidate Starts for PauloDiaboli_93:
(1, 49478), (Start: 4 @49520 has 4 MA's), (15, 49589), (16, 49595), (18, 49598), (25, 49673), (30, 49715), (32, 49724), (38, 49811), (40, 49829), (50, 49910), (67, 50003), (76, 50033),

Gene: Phendrix_81 Start: 42994, Stop: 43494, Start Num: 8
Candidate Starts for Phendrix_81:
(Start: 8 @42994 has 2 MA's), (14, 43030), (24, 43114), (27, 43132), (29, 43150), (31, 43162), (32, 43165), (40, 43279), (41, 43282), (42, 43300), (56, 43402), (66, 43444), (68, 43453),

Gene: Phrampa_80 Start: 49829, Stop: 50368, Start Num: 12
Candidate Starts for Phrampa_80:
(Start: 12 @49829 has 4 MA's), (28, 49958), (36, 50069), (47, 50165), (48, 50174), (53, 50213), (56, 50225), (58, 50234), (65, 50267), (80, 50324), (81, 50327), (82, 50330), (84, 50336), (85, 50351), (87, 50360),

Gene: Pumpernickel_90 Start: 50912, Stop: 51418, Start Num: 6
Candidate Starts for Pumpernickel_90:
(Start: 6 @50912 has 1 MA's), (13, 50957), (14, 50963), (20, 50996), (23, 51023), (25, 51050), (40, 51206), (45, 51245), (55, 51323), (59, 51338), (61, 51350), (62, 51356), (72, 51398),

Gene: Racecar_87 Start: 52882, Stop: 53421, Start Num: 12
Candidate Starts for Racecar_87:

(Start: 12 @52882 has 4 MA's), (28, 53011), (36, 53122), (39, 53134), (48, 53227), (53, 53266), (56, 53278), (58, 53287), (80, 53377), (81, 53380), (82, 53383), (84, 53389), (85, 53404), (87, 53413),

Gene: ReginaGlobina_86 Start: 52378, Stop: 52911, Start Num: 12

Candidate Starts for ReginaGlobina_86:

(Start: 12 @52378 has 4 MA's), (37, 52621), (46, 52705), (53, 52762), (56, 52774), (60, 52795), (65, 52816), (80, 52873), (83, 52882),

Gene: Rockabye_88 Start: 55112, Stop: 55654, Start Num: 12

Candidate Starts for Rockabye_88:

(Start: 12 @55112 has 4 MA's), (38, 55361), (46, 55439), (53, 55493), (56, 55505), (57, 55511), (80, 55604), (82, 55610), (86, 55634),

Gene: Sixama_93 Start: 51015, Stop: 51509, Start Num: 7

Candidate Starts for Sixama_93:

(2, 50979), (5, 51003), (Start: 7 @51015 has 5 MA's), (9, 51030), (21, 51108), (33, 51210), (44, 51345), (49, 51387), (50, 51390), (59, 51444), (67, 51480), (71, 51498), (73, 51501), (74, 51504),

Gene: Talia1610_86 Start: 52247, Stop: 52786, Start Num: 12

Candidate Starts for Talia1610_86:

(Start: 12 @52247 has 4 MA's), (28, 52376), (36, 52487), (39, 52499), (48, 52592), (53, 52631), (56, 52643), (58, 52652), (80, 52742), (81, 52745), (82, 52748), (84, 52754), (85, 52769), (87, 52778),

Gene: WaddleDee_80 Start: 48194, Stop: 48730, Start Num: 11

Candidate Starts for WaddleDee_80:

(11, 48194), (Start: 12 @48197 has 4 MA's), (41, 48467), (53, 48581), (65, 48635), (70, 48656), (80, 48692),

Gene: Zooman_78 Start: 47850, Stop: 48368, Start Num: 4

Candidate Starts for Zooman_78:

(Start: 4 @47850 has 4 MA's), (16, 47922), (18, 47925), (25, 48000), (26, 48003), (55, 48273), (63, 48309), (67, 48327), (75, 48354), (76, 48357),