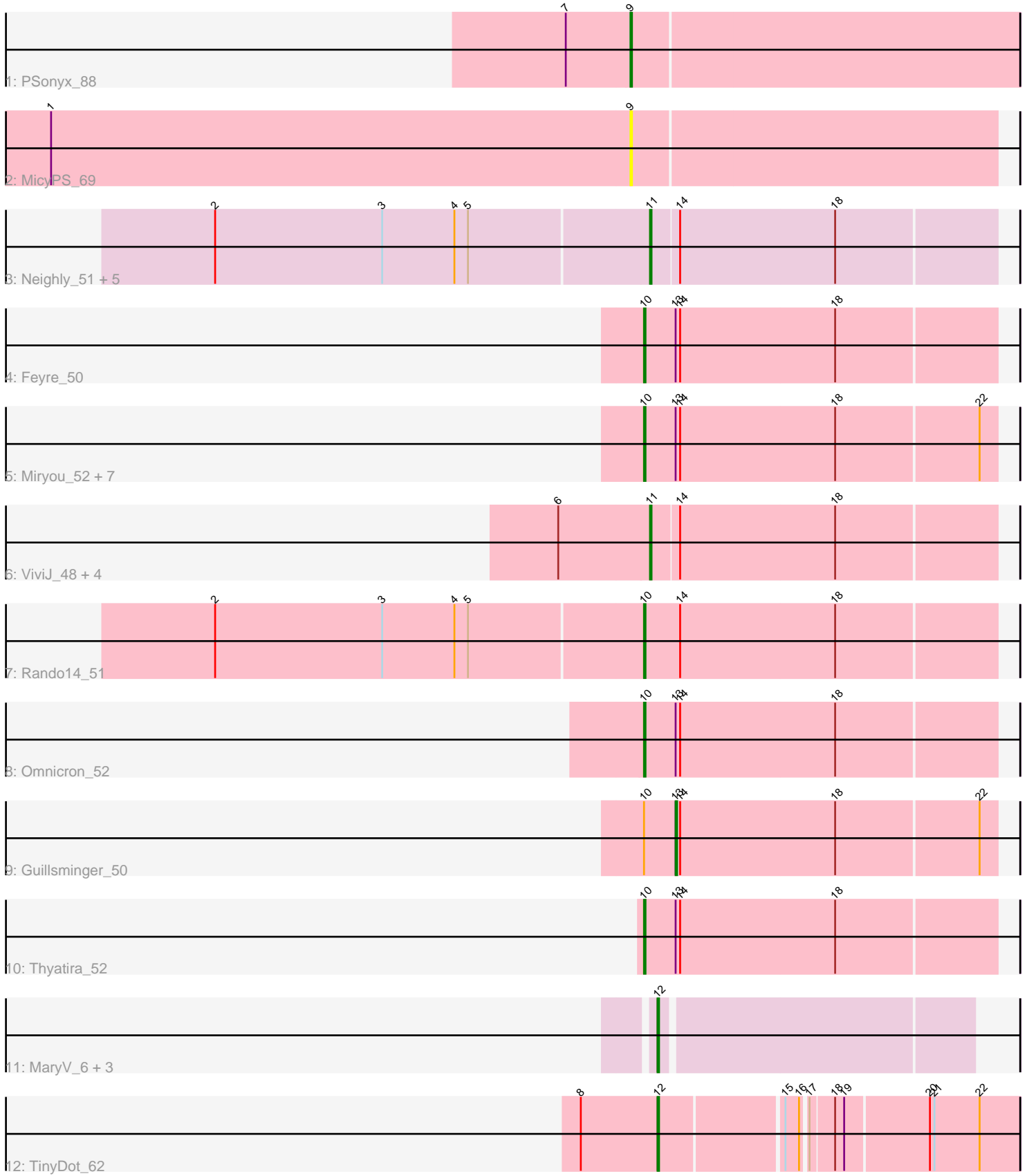


Pham 207073



Note: Tracks are now grouped by subcluster and scaled. Switching in subcluster is indicated by changes in track color. Track scale is now set by default to display the region 30 bp upstream of start 1 to 30 bp downstream of the last possible start. If this default region is judged to be packed too tightly with annotated starts, the track will be further scaled to only show that region of the ORF with annotated starts. This action will be indicated by adding "Zoomed" to the title. For starts, yellow indicates the location of called starts comprised solely of Glimmer/GeneMark auto-annotations, green indicates the location of called starts with at least 1 manual gene annotation.

Pham 207073 Report

This analysis was run 02/22/25 on database version 588.

Pham number 207073 has 31 members, 3 are drafts.

Phages represented in each track:

- Track 1 : PSonyx_88
- Track 2 : MicyPS_69
- Track 3 : Neighly_51, AlleyCat_51, Dadosky_51, Psycho_49, Edugator_48, Larva_50
- Track 4 : Feyre_50
- Track 5 : Miryou_52, Heftyboy_49, OkiRoe_49, Paola_49, SoSeph_49, Waterfoul_50, Gengar_49, Leston_49
- Track 6 : ViviJ_48, Collard_48, Agent47_50, InvictusManeo_48, Kratio_47
- Track 7 : Rando14_51
- Track 8 : Omnicron_52
- Track 9 : Guillsminger_50
- Track 10 : Thyatira_52
- Track 11 : MaryV_6, Wildcat_6, Azrael100_6, Cosmo_6
- Track 12 : TinyDot_62

Summary of Final Annotations (See graph section above for start numbers):

The start number called the most often in the published annotations is 10, it was called in 12 of the 28 non-draft genes in the pham.

Genes that call this "Most Annotated" start:

- Feyre_50, Gengar_49, Heftyboy_49, Leston_49, Miryou_52, OkiRoe_49, Omnicron_52, Paola_49, Rando14_51, SoSeph_49, Thyatira_52, Waterfoul_50,

Genes that have the "Most Annotated" start but do not call it:

- Guillsminger_50,

Genes that do not have the "Most Annotated" start:

- Agent47_50, AlleyCat_51, Azrael100_6, Collard_48, Cosmo_6, Dadosky_51, Edugator_48, InvictusManeo_48, Kratio_47, Larva_50, MaryV_6, MicyPS_69, Neighly_51, PSonyx_88, Psycho_49, TinyDot_62, ViviJ_48, Wildcat_6,

Summary by start number:

Start 9:

- Found in 2 of 31 (6.5%) of genes in pham
- Manual Annotations of this start: 1 of 28
- Called 100.0% of time when present
- Phage (with cluster) where this start called: MicyPS_69 (EQ), PSonyx_88 (EQ),

Start 10:

- Found in 13 of 31 (41.9%) of genes in pham
- Manual Annotations of this start: 12 of 28
- Called 92.3% of time when present
- Phage (with cluster) where this start called: Feyre_50 (K5), Gengar_49 (K5), Heftyboy_49 (K5), Leston_49 (K5), Miryou_52 (K5), OkiRoe_49 (K5), Omnicron_52 (K5), Paola_49 (K5), Rando14_51 (K5), SoSeph_49 (K5), Thyatira_52 (K5), Waterfoul_50 (K5),

Start 11:

- Found in 11 of 31 (35.5%) of genes in pham
- Manual Annotations of this start: 9 of 28
- Called 100.0% of time when present
- Phage (with cluster) where this start called: Agent47_50 (K5), AlleyCat_51 (K5), Collard_48 (K5), Dadosky_51 (K5), Edugator_48 (K5), InvictusManeo_48 (K5), Kratio_47 (K5), Larva_50 (K5), Neighly_51 (K3), Psycho_49 (K5), ViviJ_48 (K5),

Start 12:

- Found in 5 of 31 (16.1%) of genes in pham
- Manual Annotations of this start: 5 of 28
- Called 100.0% of time when present
- Phage (with cluster) where this start called: Azrael100_6 (V), Cosmo_6 (V), MaryV_6 (V), TinyDot_62 (singleton), Wildcat_6 (V),

Start 13:

- Found in 12 of 31 (38.7%) of genes in pham
- Manual Annotations of this start: 1 of 28
- Called 8.3% of time when present
- Phage (with cluster) where this start called: Guillsminger_50 (K5),

Summary by clusters:

There are 5 clusters represented in this pham: K3, singleton, EQ, K5, V,

Info for manual annotations of cluster EQ:

- Start number 9 was manually annotated 1 time for cluster EQ.

Info for manual annotations of cluster K5:

- Start number 10 was manually annotated 12 times for cluster K5.
- Start number 11 was manually annotated 9 times for cluster K5.
- Start number 13 was manually annotated 1 time for cluster K5.

Info for manual annotations of cluster V:

- Start number 12 was manually annotated 4 times for cluster V.

Gene Information:

Gene: Agent47_50 Start: 37416, Stop: 37640, Start Num: 11

Candidate Starts for Agent47_50:

(6, 37362), (Start: 11 @37416 has 9 MA's), (14, 37434), (18, 37536),

Gene: AlleyCat_51 Start: 37492, Stop: 37716, Start Num: 11

Candidate Starts for AlleyCat_51:

(2, 37213), (3, 37324), (4, 37372), (5, 37381), (Start: 11 @37492 has 9 MA's), (14, 37510), (18, 37612),

Gene: Azrael100_6 Start: 1245, Stop: 1045, Start Num: 12

Candidate Starts for Azrael100_6:

(Start: 12 @1245 has 5 MA's),

Gene: Collard_48 Start: 37377, Stop: 37601, Start Num: 11

Candidate Starts for Collard_48:

(6, 37323), (Start: 11 @37377 has 9 MA's), (14, 37395), (18, 37497),

Gene: Cosmo_6 Start: 1245, Stop: 1045, Start Num: 12

Candidate Starts for Cosmo_6:

(Start: 12 @1245 has 5 MA's),

Gene: Dadosky_51 Start: 37494, Stop: 37718, Start Num: 11

Candidate Starts for Dadosky_51:

(2, 37215), (3, 37326), (4, 37374), (5, 37383), (Start: 11 @37494 has 9 MA's), (14, 37512), (18, 37614),

Gene: Edugator_48 Start: 38915, Stop: 39139, Start Num: 11

Candidate Starts for Edugator_48:

(2, 38636), (3, 38747), (4, 38795), (5, 38804), (Start: 11 @38915 has 9 MA's), (14, 38933), (18, 39035),

Gene: Feyre_50 Start: 39724, Stop: 39954, Start Num: 10

Candidate Starts for Feyre_50:

(Start: 10 @39724 has 12 MA's), (Start: 13 @39745 has 1 MA's), (14, 39748), (18, 39850),

Gene: Gengar_49 Start: 38335, Stop: 38565, Start Num: 10

Candidate Starts for Gengar_49:

(Start: 10 @38335 has 12 MA's), (Start: 13 @38356 has 1 MA's), (14, 38359), (18, 38461), (22, 38554),

Gene: Guillsminger_50 Start: 38327, Stop: 38536, Start Num: 13

Candidate Starts for Guillsminger_50:

(Start: 10 @38306 has 12 MA's), (Start: 13 @38327 has 1 MA's), (14, 38330), (18, 38432), (22, 38525),

Gene: Heftyboy_49 Start: 38481, Stop: 38711, Start Num: 10

Candidate Starts for Heftyboy_49:

(Start: 10 @38481 has 12 MA's), (Start: 13 @38502 has 1 MA's), (14, 38505), (18, 38607), (22, 38700),

Gene: InvictusManeo_48 Start: 37420, Stop: 37644, Start Num: 11

Candidate Starts for InvictusManeo_48:

(6, 37366), (Start: 11 @37420 has 9 MA's), (14, 37438), (18, 37540),

Gene: Kratio_47 Start: 36969, Stop: 37193, Start Num: 11

Candidate Starts for Kratio_47:

(6, 36915), (Start: 11 @36969 has 9 MA's), (14, 36987), (18, 37089),

Gene: Larva_50 Start: 38366, Stop: 38590, Start Num: 11
Candidate Starts for Larva_50:
(2, 38087), (3, 38198), (4, 38246), (5, 38255), (Start: 11 @38366 has 9 MA's), (14, 38384), (18, 38486),

Gene: Leston_49 Start: 38435, Stop: 38665, Start Num: 10
Candidate Starts for Leston_49:
(Start: 10 @38435 has 12 MA's), (Start: 13 @38456 has 1 MA's), (14, 38459), (18, 38561), (22, 38654),

Gene: MaryV_6 Start: 1245, Stop: 1045, Start Num: 12
Candidate Starts for MaryV_6:
(Start: 12 @1245 has 5 MA's),

Gene: MicyPS_69 Start: 44459, Stop: 44220, Start Num: 9
Candidate Starts for MicyPS_69:
(1, 44843), (Start: 9 @44459 has 1 MA's),

Gene: Miryou_52 Start: 40637, Stop: 40867, Start Num: 10
Candidate Starts for Miryou_52:
(Start: 10 @40637 has 12 MA's), (Start: 13 @40658 has 1 MA's), (14, 40661), (18, 40763), (22, 40856),

Gene: Neighly_51 Start: 38365, Stop: 38589, Start Num: 11
Candidate Starts for Neighly_51:
(2, 38086), (3, 38197), (4, 38245), (5, 38254), (Start: 11 @38365 has 9 MA's), (14, 38383), (18, 38485),

Gene: OkiRoe_49 Start: 38308, Stop: 38538, Start Num: 10
Candidate Starts for OkiRoe_49:
(Start: 10 @38308 has 12 MA's), (Start: 13 @38329 has 1 MA's), (14, 38332), (18, 38434), (22, 38527),

Gene: Omnicron_52 Start: 37912, Stop: 38142, Start Num: 10
Candidate Starts for Omnicron_52:
(Start: 10 @37912 has 12 MA's), (Start: 13 @37933 has 1 MA's), (14, 37936), (18, 38038),

Gene: PSonyx_88 Start: 47998, Stop: 47744, Start Num: 9
Candidate Starts for PSonyx_88:
(7, 48037), (Start: 9 @47998 has 1 MA's),

Gene: Paola_49 Start: 38306, Stop: 38536, Start Num: 10
Candidate Starts for Paola_49:
(Start: 10 @38306 has 12 MA's), (Start: 13 @38327 has 1 MA's), (14, 38330), (18, 38432), (22, 38525),

Gene: Psycho_49 Start: 37491, Stop: 37715, Start Num: 11
Candidate Starts for Psycho_49:
(2, 37212), (3, 37323), (4, 37371), (5, 37380), (Start: 11 @37491 has 9 MA's), (14, 37509), (18, 37611),

Gene: Rando14_51 Start: 36490, Stop: 36720, Start Num: 10
Candidate Starts for Rando14_51:
(2, 36211), (3, 36322), (4, 36370), (5, 36379), (Start: 10 @36490 has 12 MA's), (14, 36514), (18, 36616),

Gene: SoSeph_49 Start: 38481, Stop: 38711, Start Num: 10
Candidate Starts for SoSeph_49:
(Start: 10 @38481 has 12 MA's), (Start: 13 @38502 has 1 MA's), (14, 38505), (18, 38607), (22, 38700),

Gene: Thyatira_52 Start: 40642, Stop: 40872, Start Num: 10

Candidate Starts for Thyatira_52:

(Start: 10 @40642 has 12 MA's), (Start: 13 @40663 has 1 MA's), (14, 40666), (18, 40768),

Gene: TinyDot_62 Start: 38552, Stop: 38776, Start Num: 12

Candidate Starts for TinyDot_62:

(8, 38501), (Start: 12 @38552 has 5 MA's), (15, 38630), (16, 38639), (17, 38642), (18, 38657), (19, 38663), (20, 38717), (21, 38720), (22, 38750),

Gene: ViviJ_48 Start: 37177, Stop: 37401, Start Num: 11

Candidate Starts for ViviJ_48:

(6, 37123), (Start: 11 @37177 has 9 MA's), (14, 37195), (18, 37297),

Gene: Waterfoul_50 Start: 38543, Stop: 38773, Start Num: 10

Candidate Starts for Waterfoul_50:

(Start: 10 @38543 has 12 MA's), (Start: 13 @38564 has 1 MA's), (14, 38567), (18, 38669), (22, 38762),

Gene: Wildcat_6 Start: 1255, Stop: 1055, Start Num: 12

Candidate Starts for Wildcat_6:

(Start: 12 @1255 has 5 MA's),