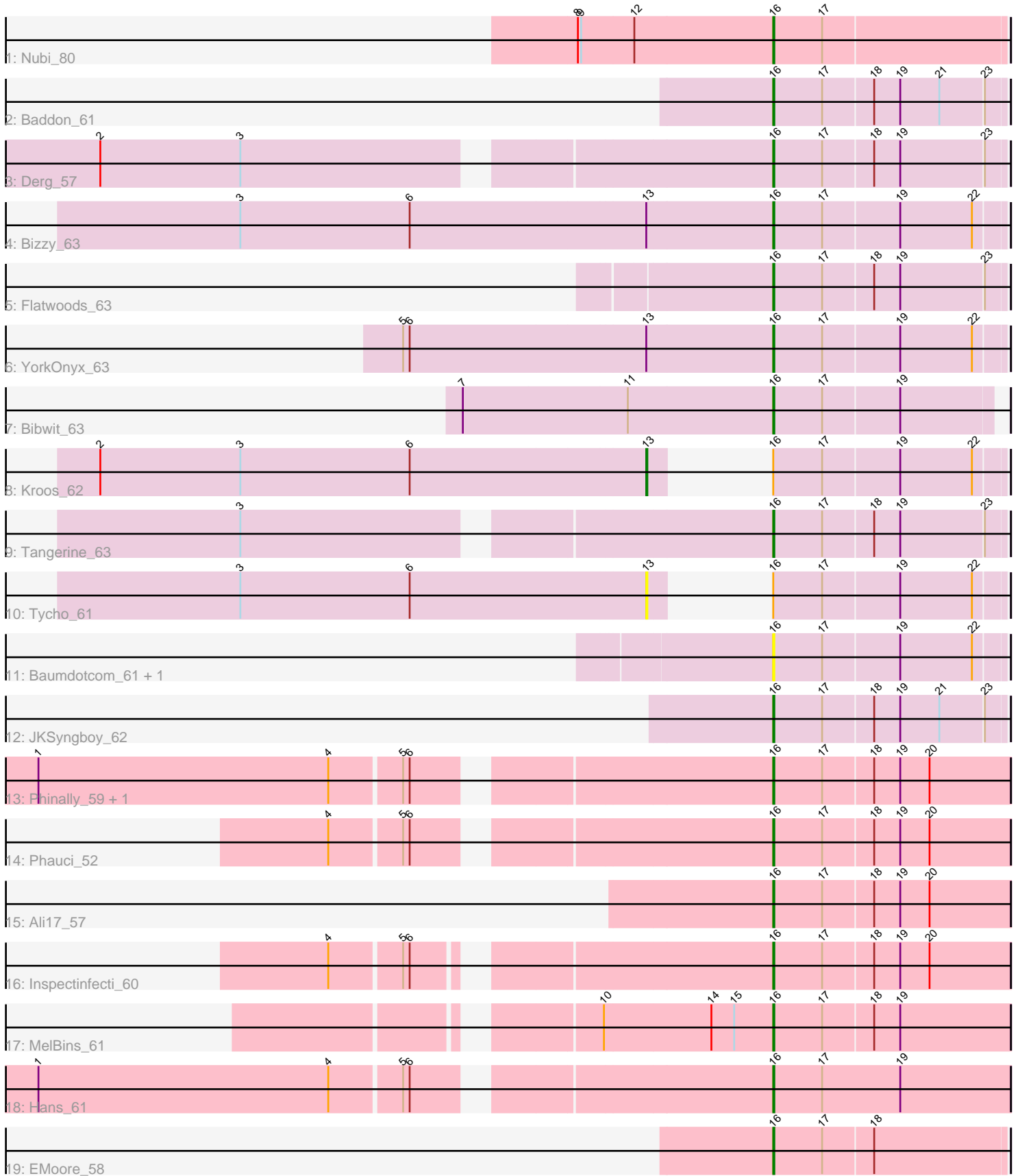


Pham 207157



Note: Tracks are now grouped by subcluster and scaled. Switching in subcluster is indicated by changes in track color. Track scale is now set by default to display the region 30 bp upstream of start 1 to 30 bp downstream of the last possible start. If this default region is judged to be packed too tightly with annotated starts, the track will be further scaled to only show that region of the ORF with annotated starts. This action will be indicated by adding "Zoomed" to the title. For starts, yellow indicates the location of called starts comprised solely of Glimmer/GeneMark auto-annotations, green indicates the location of called starts with at least 1 manual gene annotation.

Pham 207157 Report

This analysis was run 02/22/25 on database version 588.

Pham number 207157 has 21 members, 3 are drafts.

Phages represented in each track:

- Track 1 : Nubi_80
- Track 2 : Baddon_61
- Track 3 : Derg_57
- Track 4 : Bizzy_63
- Track 5 : Flatwoods_63
- Track 6 : YorkOnyx_63
- Track 7 : Bibwit_63
- Track 8 : Kroos_62
- Track 9 : Tangerine_63
- Track 10 : Tycho_61
- Track 11 : Baumdotcom_61, Kwobi_65
- Track 12 : JKSyngboy_62
- Track 13 : Phinally_59, Leonard_59
- Track 14 : Phauci_52
- Track 15 : Ali17_57
- Track 16 : Inspectinfecti_60
- Track 17 : MelBins_61
- Track 18 : Hans_61
- Track 19 : EMoore_58

Summary of Final Annotations (See graph section above for start numbers):

The start number called the most often in the published annotations is 16, it was called in 17 of the 18 non-draft genes in the pham.

Genes that call this "Most Annotated" start:

- Ali17_57, Baddon_61, Baumdotcom_61, Bibwit_63, Bizzy_63, Derg_57, EMoore_58, Flatwoods_63, Hans_61, Inspectinfecti_60, JKSyngboy_62, Kwobi_65, Leonard_59, MelBins_61, Nubi_80, Phauci_52, Phinally_59, Tangerine_63, YorkOnyx_63,

Genes that have the "Most Annotated" start but do not call it:

- Kroos_62, Tycho_61,

Genes that do not have the "Most Annotated" start:

-

Summary by start number:

Start 13:

- Found in 4 of 21 (19.0%) of genes in pham
- Manual Annotations of this start: 1 of 18
- Called 50.0% of time when present
- Phage (with cluster) where this start called: Kroos_62 (DE1), Tycho_61 (DE1),

Start 16:

- Found in 21 of 21 (100.0%) of genes in pham
- Manual Annotations of this start: 17 of 18
- Called 90.5% of time when present
- Phage (with cluster) where this start called: Ali17_57 (DE2), Baddon_61 (DE1), Baumdotcom_61 (DE1), Bibwit_63 (DE1), Bizzy_63 (DE1), Derg_57 (DE1), EMOore_58 (DE2), Flatwoods_63 (DE1), Hans_61 (DE2), Inspectinfecti_60 (DE2), JKSyngboy_62 (DE1), Kwobi_65 (DE1), Leonard_59 (DE2), MelBins_61 (DE2), Nubi_80 (DC1), Phauci_52 (DE2), Phinally_59 (DE2), Tangerine_63 (DE1), YorkOnyx_63 (DE1),

Summary by clusters:

There are 3 clusters represented in this pham: DE1, DE2, DC1,

Info for manual annotations of cluster DC1:

- Start number 16 was manually annotated 1 time for cluster DC1.

Info for manual annotations of cluster DE1:

- Start number 13 was manually annotated 1 time for cluster DE1.
- Start number 16 was manually annotated 8 times for cluster DE1.

Info for manual annotations of cluster DE2:

- Start number 16 was manually annotated 8 times for cluster DE2.

Gene Information:

Gene: Ali17_57 Start: 47018, Stop: 47233, Start Num: 16

Candidate Starts for Ali17_57:

(Start: 16 @47018 has 17 MA's), (17, 47063), (18, 47108), (19, 47132), (20, 47159),

Gene: Baddon_61 Start: 49615, Stop: 49821, Start Num: 16

Candidate Starts for Baddon_61:

(Start: 16 @49615 has 17 MA's), (17, 49660), (18, 49705), (19, 49729), (21, 49765), (23, 49804),

Gene: Baumdotcom_61 Start: 48916, Stop: 49122, Start Num: 16

Candidate Starts for Baumdotcom_61:

(Start: 16 @48916 has 17 MA's), (17, 48961), (19, 49030), (22, 49096),

Gene: Bibwit_63 Start: 49471, Stop: 49668, Start Num: 16

Candidate Starts for Bibwit_63:

(7, 49285), (11, 49435), (Start: 16 @49471 has 17 MA's), (17, 49516), (19, 49585),

Gene: Bizzy_63 Start: 48811, Stop: 49017, Start Num: 16

Candidate Starts for Bizzy_63:

(3, 48424), (6, 48580), (Start: 13 @48793 has 1 MA's), (Start: 16 @48811 has 17 MA's), (17, 48856), (19, 48925), (22, 48991),

Gene: Derg_57 Start: 47608, Stop: 47814, Start Num: 16

Candidate Starts for Derg_57:

(2, 47125), (3, 47254), (Start: 16 @47608 has 17 MA's), (17, 47653), (18, 47698), (19, 47722), (23, 47797),

Gene: EMoore_58 Start: 48525, Stop: 48734, Start Num: 16

Candidate Starts for EMoore_58:

(Start: 16 @48525 has 17 MA's), (17, 48570), (18, 48615),

Gene: Flatwoods_63 Start: 48489, Stop: 48695, Start Num: 16

Candidate Starts for Flatwoods_63:

(Start: 16 @48489 has 17 MA's), (17, 48534), (18, 48579), (19, 48603), (23, 48678),

Gene: Hans_61 Start: 47742, Stop: 47960, Start Num: 16

Candidate Starts for Hans_61:

(1, 47208), (4, 47475), (5, 47538), (6, 47544), (Start: 16 @47742 has 17 MA's), (17, 47787), (19, 47859),

Gene: Inspectinfecti_60 Start: 47867, Stop: 48082, Start Num: 16

Candidate Starts for Inspectinfecti_60:

(4, 47606), (5, 47669), (6, 47675), (Start: 16 @47867 has 17 MA's), (17, 47912), (18, 47957), (19, 47981), (20, 48008),

Gene: JKSyngboy_62 Start: 49841, Stop: 50047, Start Num: 16

Candidate Starts for JKSyngboy_62:

(Start: 16 @49841 has 17 MA's), (17, 49886), (18, 49931), (19, 49955), (21, 49991), (23, 50030),

Gene: Kroos_62 Start: 49360, Stop: 49584, Start Num: 13

Candidate Starts for Kroos_62:

(2, 48862), (3, 48991), (6, 49147), (Start: 13 @49360 has 1 MA's), (Start: 16 @49378 has 17 MA's), (17, 49423), (19, 49492), (22, 49558),

Gene: Kwobi_65 Start: 49987, Stop: 50193, Start Num: 16

Candidate Starts for Kwobi_65:

(Start: 16 @49987 has 17 MA's), (17, 50032), (19, 50101), (22, 50167),

Gene: Leonard_59 Start: 47944, Stop: 48159, Start Num: 16

Candidate Starts for Leonard_59:

(1, 47410), (4, 47677), (5, 47740), (6, 47746), (Start: 16 @47944 has 17 MA's), (17, 47989), (18, 48034), (19, 48058), (20, 48085),

Gene: MelBins_61 Start: 48205, Stop: 48420, Start Num: 16

Candidate Starts for MelBins_61:

(10, 48052), (14, 48148), (15, 48169), (Start: 16 @48205 has 17 MA's), (17, 48250), (18, 48295), (19, 48319),

Gene: Nubi_80 Start: 52419, Stop: 52628, Start Num: 16

Candidate Starts for Nubi_80:

(8, 52338), (9, 52341), (12, 52389), (Start: 16 @52419 has 17 MA's), (17, 52464),

Gene: Phauci_52 Start: 44793, Stop: 45008, Start Num: 16

Candidate Starts for Phauci_52:

(4, 44526), (5, 44589), (6, 44595), (Start: 16 @44793 has 17 MA's), (17, 44838), (18, 44883), (19, 44907), (20, 44934),

Gene: Phinally_59 Start: 47941, Stop: 48156, Start Num: 16

Candidate Starts for Phinally_59:

(1, 47407), (4, 47674), (5, 47737), (6, 47743), (Start: 16 @47941 has 17 MA's), (17, 47986), (18, 48031), (19, 48055), (20, 48082),

Gene: Tangerine_63 Start: 48997, Stop: 49203, Start Num: 16

Candidate Starts for Tangerine_63:

(3, 48643), (Start: 16 @48997 has 17 MA's), (17, 49042), (18, 49087), (19, 49111), (23, 49186),

Gene: Tycho_61 Start: 48782, Stop: 49006, Start Num: 13

Candidate Starts for Tycho_61:

(3, 48413), (6, 48569), (Start: 13 @48782 has 1 MA's), (Start: 16 @48800 has 17 MA's), (17, 48845), (19, 48914), (22, 48980),

Gene: YorkOnyx_63 Start: 48830, Stop: 49036, Start Num: 16

Candidate Starts for YorkOnyx_63:

(5, 48593), (6, 48599), (Start: 13 @48812 has 1 MA's), (Start: 16 @48830 has 17 MA's), (17, 48875), (19, 48944), (22, 49010),