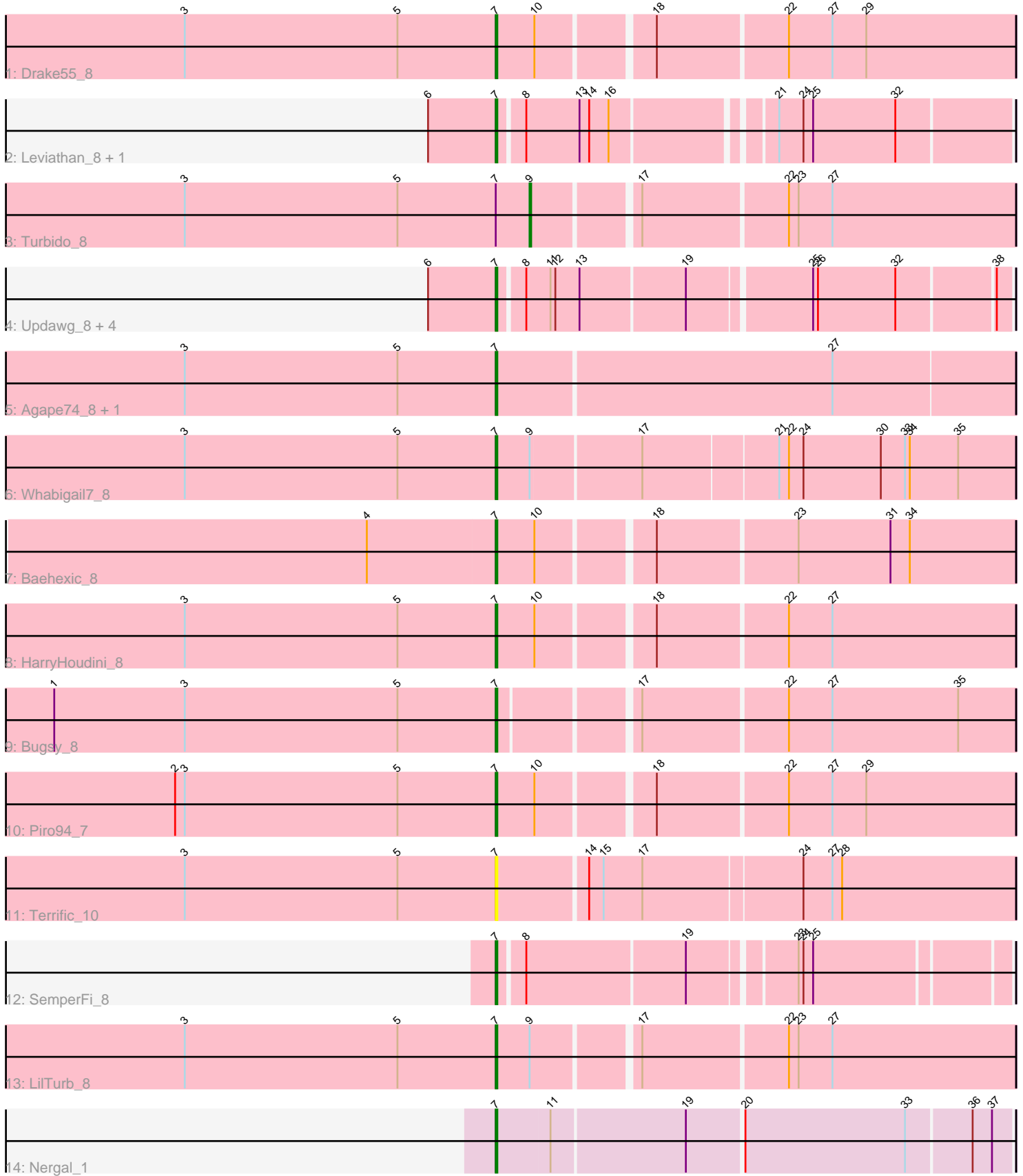


Pham 207255



Note: Tracks are now grouped by subcluster and scaled. Switching in subcluster is indicated by changes in track color. Track scale is now set by default to display the region 30 bp upstream of start 1 to 30 bp downstream of the last possible start. If this default region is judged to be packed too tightly with annotated starts, the track will be further scaled to only show that region of the ORF with annotated starts. This action will be indicated by adding "Zoomed" to the title. For starts, yellow indicates the location of called starts comprised solely of Glimmer/GeneMark auto-annotations, green indicates the location of called starts with at least 1 manual gene annotation.

Pham 207255 Report

This analysis was run 02/22/25 on database version 588.

Pham number 207255 has 20 members, 2 are drafts.

Phages represented in each track:

- Track 1 : Drake55_8
- Track 2 : Leviathan_8, Smeagan_8
- Track 3 : Turbido_8
- Track 4 : Updawg_8, Centaur_8, Equemioh13_8, WideWale_8, Gratitude_7
- Track 5 : Agape74_8, AbbyPaige_8
- Track 6 : Whabigail7_8
- Track 7 : Baehexic_8
- Track 8 : HarryHoudini_8
- Track 9 : Buggy_8
- Track 10 : Piro94_7
- Track 11 : Terrific_10
- Track 12 : SemperFi_8
- Track 13 : LilTurb_8
- Track 14 : Nergal_1

Summary of Final Annotations (See graph section above for start numbers):

The start number called the most often in the published annotations is 7, it was called in 17 of the 18 non-draft genes in the pham.

Genes that call this "Most Annotated" start:

- AbbyPaige_8, Agape74_8, Baehexic_8, Buggy_8, Centaur_8, Drake55_8, Equemioh13_8, Gratitude_7, HarryHoudini_8, Leviathan_8, LilTurb_8, Nergal_1, Piro94_7, SemperFi_8, Smeagan_8, Terrific_10, Updawg_8, Whabigail7_8, WideWale_8,

Genes that have the "Most Annotated" start but do not call it:

- Turbido_8,

Genes that do not have the "Most Annotated" start:

-

Summary by start number:

Start 7:

- Found in 20 of 20 (100.0%) of genes in pham
- Manual Annotations of this start: 17 of 18
- Called 95.0% of time when present
- Phage (with cluster) where this start called: AbbyPaige_8 (A2), Agape74_8 (A2), Baehexic_8 (A2), Buggy_8 (A2), Centaur_8 (A2), Drake55_8 (A2), Equemioh13_8 (A2), Gratitude_7 (A2), HarryHoudini_8 (A2), Leviathan_8 (A2), LiITurb_8 (A2), Nergal_1 (AG), Piro94_7 (A2), SemperFi_8 (A2), Smeagan_8 (A2), Terrific_10 (A2), Updawg_8 (A2), Whabigail7_8 (A2), WideWale_8 (A2),

Start 9:

- Found in 3 of 20 (15.0%) of genes in pham
- Manual Annotations of this start: 1 of 18
- Called 33.3% of time when present
- Phage (with cluster) where this start called: Turbido_8 (A2),

Summary by clusters:

There are 2 clusters represented in this pham: A2, AG,

Info for manual annotations of cluster A2:

- Start number 7 was manually annotated 16 times for cluster A2.
- Start number 9 was manually annotated 1 time for cluster A2.

Info for manual annotations of cluster AG:

- Start number 7 was manually annotated 1 time for cluster AG.

Gene Information:

Gene: AbbyPaige_8 Start: 4502, Stop: 4816, Start Num: 7

Candidate Starts for AbbyPaige_8:

(3, 4310), (5, 4442), (Start: 7 @4502 has 17 MA's), (27, 4706),

Gene: Agape74_8 Start: 4502, Stop: 4816, Start Num: 7

Candidate Starts for Agape74_8:

(3, 4310), (5, 4442), (Start: 7 @4502 has 17 MA's), (27, 4706),

Gene: Baehexic_8 Start: 4588, Stop: 4896, Start Num: 7

Candidate Starts for Baehexic_8:

(4, 4510), (Start: 7 @4588 has 17 MA's), (10, 4612), (18, 4678), (23, 4762), (31, 4819), (34, 4831),

Gene: Buggy_8 Start: 4513, Stop: 4818, Start Num: 7

Candidate Starts for Buggy_8:

(1, 4240), (3, 4321), (5, 4453), (Start: 7 @4513 has 17 MA's), (17, 4591), (22, 4678), (27, 4705), (35, 4783),

Gene: Centaur_8 Start: 4586, Stop: 4885, Start Num: 7

Candidate Starts for Centaur_8:

(6, 4544), (Start: 7 @4586 has 17 MA's), (8, 4601), (11, 4616), (12, 4619), (13, 4634), (19, 4697), (25, 4769), (26, 4772), (32, 4820), (38, 4877),

Gene: Drake55_8 Start: 4591, Stop: 4899, Start Num: 7

Candidate Starts for Drake55_8:

(3, 4399), (5, 4531), (Start: 7 @4591 has 17 MA's), (10, 4615), (18, 4681), (22, 4759), (27, 4786), (29, 4807),

Gene: Equemioh13_8 Start: 4589, Stop: 4888, Start Num: 7

Candidate Starts for Equemioh13_8:

(6, 4547), (Start: 7 @4589 has 17 MA's), (8, 4604), (11, 4619), (12, 4622), (13, 4637), (19, 4700), (25, 4772), (26, 4775), (32, 4823), (38, 4880),

Gene: Gratitude_7 Start: 4589, Stop: 4888, Start Num: 7

Candidate Starts for Gratitude_7:

(6, 4547), (Start: 7 @4589 has 17 MA's), (8, 4604), (11, 4619), (12, 4622), (13, 4637), (19, 4700), (25, 4772), (26, 4775), (32, 4823), (38, 4880),

Gene: HarryHoudini_8 Start: 4591, Stop: 4899, Start Num: 7

Candidate Starts for HarryHoudini_8:

(3, 4399), (5, 4531), (Start: 7 @4591 has 17 MA's), (10, 4615), (18, 4681), (22, 4759), (27, 4786),

Gene: Leviathan_8 Start: 4512, Stop: 4808, Start Num: 7

Candidate Starts for Leviathan_8:

(6, 4470), (Start: 7 @4512 has 17 MA's), (8, 4527), (13, 4560), (14, 4566), (16, 4578), (21, 4668), (24, 4683), (25, 4689), (32, 4740),

Gene: LilTurb_8 Start: 4512, Stop: 4820, Start Num: 7

Candidate Starts for LilTurb_8:

(3, 4320), (5, 4452), (Start: 7 @4512 has 17 MA's), (Start: 9 @4533 has 1 MA's), (17, 4593), (22, 4680), (23, 4686), (27, 4707),

Gene: Nergal_1 Start: 217, Stop: 525, Start Num: 7

Candidate Starts for Nergal_1:

(Start: 7 @217 has 17 MA's), (11, 250), (19, 331), (20, 364), (33, 463), (36, 502), (37, 514),

Gene: Piro94_7 Start: 4592, Stop: 4900, Start Num: 7

Candidate Starts for Piro94_7:

(2, 4394), (3, 4400), (5, 4532), (Start: 7 @4592 has 17 MA's), (10, 4616), (18, 4682), (22, 4760), (27, 4787), (29, 4808),

Gene: SemperFi_8 Start: 4528, Stop: 4821, Start Num: 7

Candidate Starts for SemperFi_8:

(Start: 7 @4528 has 17 MA's), (8, 4543), (19, 4639), (23, 4699), (24, 4702), (25, 4708),

Gene: Smeagan_8 Start: 4515, Stop: 4811, Start Num: 7

Candidate Starts for Smeagan_8:

(6, 4473), (Start: 7 @4515 has 17 MA's), (8, 4530), (13, 4563), (14, 4569), (16, 4581), (21, 4671), (24, 4686), (25, 4692), (32, 4743),

Gene: Terrific_10 Start: 4584, Stop: 4898, Start Num: 7

Candidate Starts for Terrific_10:

(3, 4392), (5, 4524), (Start: 7 @4584 has 17 MA's), (14, 4638), (15, 4647), (17, 4671), (24, 4767), (27, 4785), (28, 4791),

Gene: Turbido_8 Start: 4536, Stop: 4823, Start Num: 9

Candidate Starts for Turbido_8:

(3, 4323), (5, 4455), (Start: 7 @4515 has 17 MA's), (Start: 9 @4536 has 1 MA's), (17, 4596), (22, 4683), (23, 4689), (27, 4710),

Gene: Updawg_8 Start: 4589, Stop: 4888, Start Num: 7

Candidate Starts for Updawg_8:

(6, 4547), (Start: 7 @4589 has 17 MA's), (8, 4604), (11, 4619), (12, 4622), (13, 4637), (19, 4700), (25, 4772), (26, 4775), (32, 4823), (38, 4880),

Gene: Whabigail7_8 Start: 4512, Stop: 4826, Start Num: 7

Candidate Starts for Whabigail7_8:

(3, 4320), (5, 4452), (Start: 7 @4512 has 17 MA's), (Start: 9 @4533 has 1 MA's), (17, 4599), (21, 4680), (22, 4686), (24, 4695), (30, 4743), (33, 4758), (34, 4761), (35, 4791),

Gene: WideWale_8 Start: 4589, Stop: 4888, Start Num: 7

Candidate Starts for WideWale_8:

(6, 4547), (Start: 7 @4589 has 17 MA's), (8, 4604), (11, 4619), (12, 4622), (13, 4637), (19, 4700), (25, 4772), (26, 4775), (32, 4823), (38, 4880),