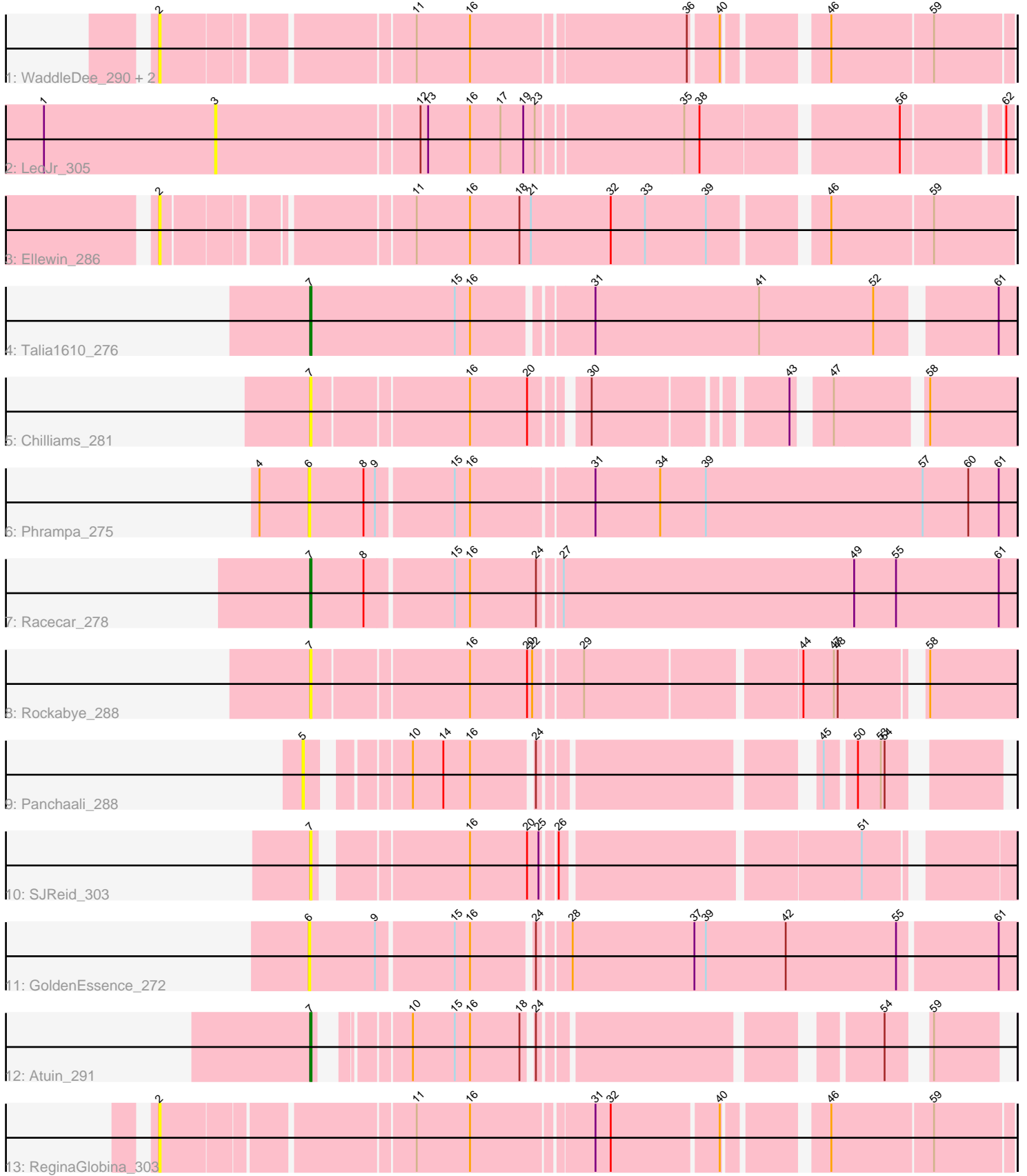


Pham 207309



Note: Tracks are now grouped by subcluster and scaled. Switching in subcluster is indicated by changes in track color. Track scale is now set by default to display the region 30 bp upstream of start 1 to 30 bp downstream of the last possible start. If this default region is judged to be packed too tightly with annotated starts, the track will be further scaled to only show that region of the ORF with annotated starts. This action will be indicated by adding "Zoomed" to the title. For starts, yellow indicates the location of called starts comprised solely of Glimmer/GeneMark auto-annotations, green indicates the location of called starts with at least 1 manual gene annotation.

Pham 207309 Report

This analysis was run 02/22/25 on database version 588.

Pham number 207309 has 15 members, 12 are drafts.

Phages represented in each track:

- Track 1 : WaddleDee_290, KSunshine22_282, DunneganBoMo_291
- Track 2 : LeoJr_305
- Track 3 : Ellewin_286
- Track 4 : Talia1610_276
- Track 5 : Chilliams_281
- Track 6 : Phrampa_275
- Track 7 : Racecar_278
- Track 8 : Rockabye_288
- Track 9 : Panchaali_288
- Track 10 : SJReid_303
- Track 11 : GoldenEssence_272
- Track 12 : Atuin_291
- Track 13 : ReginaGlobina_303

Summary of Final Annotations (See graph section above for start numbers):

The start number called the most often in the published annotations is 7, it was called in 3 of the 3 non-draft genes in the pham.

Genes that call this "Most Annotated" start:

- Atuin_291, Chilliams_281, Racecar_278, Rockabye_288, SJReid_303, Talia1610_276,

Genes that have the "Most Annotated" start but do not call it:

-

Genes that do not have the "Most Annotated" start:

- DunneganBoMo_291, Ellewin_286, GoldenEssence_272, KSunshine22_282, LeoJr_305, Panchaali_288, Phrampa_275, ReginaGlobina_303, WaddleDee_290,

Summary by start number:

Start 2:

- Found in 5 of 15 (33.3%) of genes in pham

- No Manual Annotations of this start.
- Called 100.0% of time when present
- Phage (with cluster) where this start called: DunneganBoMo_291 (FC), Ellewin_286 (FC), KSunshine22_282 (FC), ReginaGlobina_303 (FC), WaddleDee_290 (FC),

Start 3:

- Found in 1 of 15 (6.7%) of genes in pham
- No Manual Annotations of this start.
- Called 100.0% of time when present
- Phage (with cluster) where this start called: LeoJr_305 (FC),

Start 5:

- Found in 1 of 15 (6.7%) of genes in pham
- No Manual Annotations of this start.
- Called 100.0% of time when present
- Phage (with cluster) where this start called: Panchaali_288 (FC),

Start 6:

- Found in 2 of 15 (13.3%) of genes in pham
- No Manual Annotations of this start.
- Called 100.0% of time when present
- Phage (with cluster) where this start called: GoldenEssence_272 (FC), Phrampa_275 (FC),

Start 7:

- Found in 6 of 15 (40.0%) of genes in pham
- Manual Annotations of this start: 3 of 3
- Called 100.0% of time when present
- Phage (with cluster) where this start called: Atuin_291 (FC), Chilliams_281 (FC), Racecar_278 (FC), Rockabye_288 (FC), SJReid_303 (FC), Talia1610_276 (FC),

Summary by clusters:

There is one cluster represented in this pham: FC

Info for manual annotations of cluster FC:

- Start number 7 was manually annotated 3 times for cluster FC.

Gene Information:

Gene: Atuin_291 Start: 173414, Stop: 173854, Start Num: 7

Candidate Starts for Atuin_291:

(Start: 7 @173414 has 3 MA's), (10, 173465), (15, 173498), (16, 173510), (18, 173549), (24, 173555), (54, 173783), (59, 173804),

Gene: Chilliams_281 Start: 168229, Stop: 168711, Start Num: 7

Candidate Starts for Chilliams_281:

(Start: 7 @168229 has 3 MA's), (16, 168346), (20, 168391), (30, 168424), (43, 168559), (47, 168580), (58, 168643),

Gene: DunneganBoMo_291 Start: 174595, Stop: 175206, Start Num: 2

Candidate Starts for DunneganBoMo_291:

(2, 174595), (11, 174778), (16, 174820), (36, 174982), (40, 175003), (46, 175069), (59, 175147),

Gene: Ellewin_286 Start: 173977, Stop: 174603, Start Num: 2

Candidate Starts for Ellewin_286:

(2, 173977), (11, 174154), (16, 174196), (18, 174235), (21, 174244), (32, 174307), (33, 174334), (39, 174382), (46, 174463), (59, 174541),

Gene: GoldenEssence_272 Start: 166691, Stop: 167221, Start Num: 6

Candidate Starts for GoldenEssence_272:

(6, 166691), (9, 166742), (15, 166799), (16, 166811), (24, 166856), (28, 166877), (37, 166973), (39, 166982), (42, 167045), (55, 167132), (61, 167207),

Gene: KSunshine22_282 Start: 172813, Stop: 173424, Start Num: 2

Candidate Starts for KSunshine22_282:

(2, 172813), (11, 172996), (16, 173038), (36, 173200), (40, 173221), (46, 173287), (59, 173365),

Gene: LeoJr_305 Start: 173796, Stop: 174383, Start Num: 3

Candidate Starts for LeoJr_305:

(1, 173661), (3, 173796), (12, 173952), (13, 173958), (16, 173991), (17, 174015), (19, 174033), (23, 174042), (35, 174150), (38, 174162), (56, 174306), (62, 174378),

Gene: Panchaali_288 Start: 174600, Stop: 175055, Start Num: 5

Candidate Starts for Panchaali_288:

(5, 174600), (10, 174663), (14, 174687), (16, 174708), (24, 174753), (45, 174939), (50, 174960), (53, 174978), (54, 174981),

Gene: Phrampa_275 Start: 172393, Stop: 172935, Start Num: 6

Candidate Starts for Phrampa_275:

(4, 172354), (6, 172393), (8, 172435), (9, 172444), (15, 172501), (16, 172513), (31, 172603), (34, 172654), (39, 172690), (57, 172861), (60, 172897), (61, 172921),

Gene: Racecar_278 Start: 169786, Stop: 170328, Start Num: 7

Candidate Starts for Racecar_278:

(Start: 7 @169786 has 3 MA's), (8, 169828), (15, 169894), (16, 169906), (24, 169957), (27, 169972), (49, 170200), (55, 170233), (61, 170314),

Gene: ReginaGlobina_303 Start: 173940, Stop: 174551, Start Num: 2

Candidate Starts for ReginaGlobina_303:

(2, 173940), (11, 174123), (16, 174165), (31, 174255), (32, 174267), (40, 174348), (46, 174414), (59, 174492),

Gene: Rockabye_288 Start: 168270, Stop: 168776, Start Num: 7

Candidate Starts for Rockabye_288:

(Start: 7 @168270 has 3 MA's), (16, 168387), (20, 168432), (22, 168435), (29, 168468), (44, 168627), (47, 168651), (48, 168654), (58, 168708),

Gene: SJReid_303 Start: 169574, Stop: 170062, Start Num: 7

Candidate Starts for SJReid_303:

(Start: 7 @169574 has 3 MA's), (16, 169679), (20, 169724), (25, 169733), (26, 169742), (51, 169961),

Gene: Talia1610_276 Start: 170693, Stop: 171220, Start Num: 7

Candidate Starts for Talia1610_276:

(Start: 7 @170693 has 3 MA's), (15, 170807), (16, 170819), (31, 170903), (41, 171032), (52, 171122), (61, 171206),

Gene: WaddleDee_290 Start: 173379, Stop: 173990, Start Num: 2

Candidate Starts for WaddleDee_290:

(2, 173379), (11, 173562), (16, 173604), (36, 173766), (40, 173787), (46, 173853), (59, 173931),