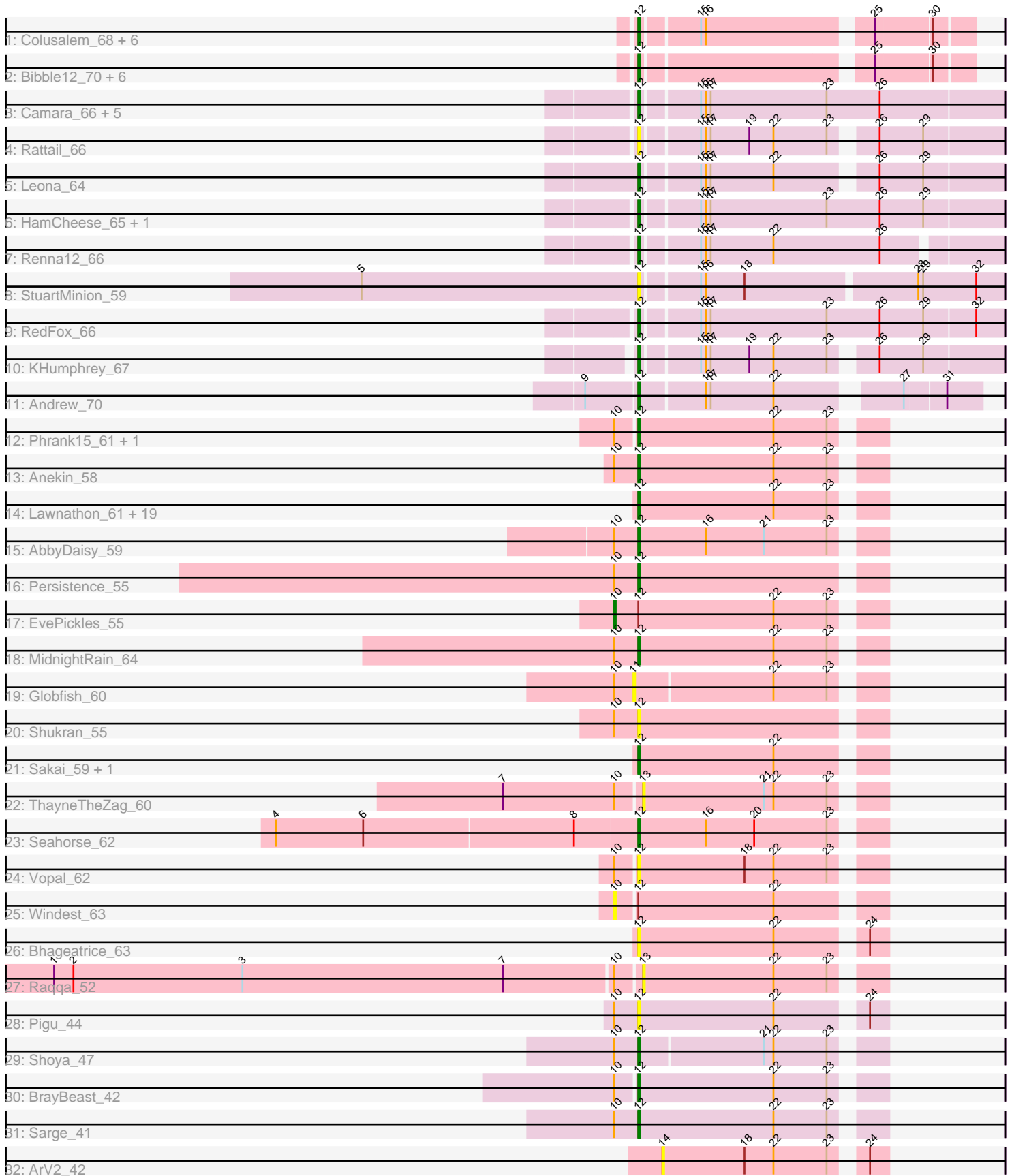


Pham 208617



Note: Tracks are now grouped by subcluster and scaled. Switching in subcluster is indicated by changes in track color. Track scale is now set by default to display the region 30 bp upstream of start 1 to 30 bp downstream of the last possible start. If this default region is judged to be packed too tightly with annotated starts, the track will be further scaled to only show that region of the ORF with annotated starts. This action will be indicated by adding "Zoomed" to the title. For starts, yellow indicates the location of called starts comprised solely of Glimmer/GeneMark auto-annotations, green indicates the location of called starts with at least 1 manual gene annotation.

Pham 208617 Report

This analysis was run 02/22/25 on database version 588.

Pham number 208617 has 71 members, 34 are drafts.

Phages represented in each track:

- Track 1 : Colusalem_68, Bedetta_70, Jerole_75, OtsoOtso_74, Amelia_65, HannahPhantana_67, Polka_65
- Track 2 : Bibble12_70, Lunar_68, Daob_67, Kepler_67, Coral_66, Melons_68, Cote_69
- Track 3 : Camara_66, AmiCi24_65, DanHam62_66, Juno112_65, Glotell_69, Atlantica_67
- Track 4 : Rattail_66
- Track 5 : Leona_64
- Track 6 : HamCheese_65, PhluffyCoco_66
- Track 7 : Renna12_66
- Track 8 : StuartMinion_59
- Track 9 : RedFox_66
- Track 10 : KHumphrey_67
- Track 11 : Andrew_70
- Track 12 : Phrank15_61, Alatato_39
- Track 13 : Anekin_58
- Track 14 : Lawnathon_61, AdaS_58, Bauer_50, CookieBear_60, Hestia_52, Raphaella_59, BenchScraper_59, BlueShadow_61, YoungHarleezy_60, Hillester_64, BlackSpider_46, MUWow_59, Aikyam_59, Faja_60, RadFad_64, Isolde_59, MaterMagnus_61, JellyBread_57, BillyTP_62, Auxilium_56
- Track 15 : AbbyDaisy_59
- Track 16 : Persistence_55
- Track 17 : EvePickles_55
- Track 18 : MidnightRain_64
- Track 19 : Globfish_60
- Track 20 : Shukran_55
- Track 21 : Sakai_59, Gorpy_60
- Track 22 : ThayneTheZag_60
- Track 23 : Seahorse_62
- Track 24 : Vopal_62
- Track 25 : Windest_63
- Track 26 : Bhageatrice_63
- Track 27 : Raqqa_52
- Track 28 : Pigu_44
- Track 29 : Shoya_47
- Track 30 : BrayBeast_42
- Track 31 : Sarge_41

- Track 32 : ArV2_42

Summary of Final Annotations (See graph section above for start numbers):

The start number called the most often in the published annotations is 12, it was called in 36 of the 37 non-draft genes in the pham.

Genes that call this "Most Annotated" start:

- AbbyDaisy_59, AdaS_58, Aikyam_59, Alatato_39, Amelia_65, AmiCi24_65, Andrew_70, Anekin_58, Atlantica_67, Auxilium_56, Bauer_50, Bedetta_70, BenchScraper_59, Bhageatrice_63, Bibble12_70, BillyTP_62, BlackSpider_46, BlueShadow_61, BrayBeast_42, Camara_66, Colusalem_68, CookieBear_60, Coral_66, Cote_69, DanHam62_66, Daob_67, Faja_60, Glotell_69, Gorpy_60, HamCheese_65, HannahPhantana_67, Hestia_52, Hillester_64, Isolde_59, JellyBread_57, Jerole_75, Juno112_65, KHumphrey_67, Kepler_67, Lawnathon_61, Leona_64, Lunar_68, MUWow_59, MaterMagnus_61, Melons_68, MidnightRain_64, OtsoOtso_74, Persistence_55, PhluffyCoco_66, Phrank15_61, Pigu_44, Polka_65, RadFad_64, Raphaella_59, Rattail_66, RedFox_66, Renna12_66, Sakai_59, Sarge_41, Seahorse_62, Shoya_47, Shukran_55, StuartMinion_59, Vopal_62, YoungHarleezy_60,

Genes that have the "Most Annotated" start but do not call it:

- EvePickles_55, Windest_63,

Genes that do not have the "Most Annotated" start:

- ArV2_42, Globfish_60, Raqqa_52, ThayneTheZag_60,

Summary by start number:

Start 10:

- Found in 17 of 71 (23.9%) of genes in pham
- Manual Annotations of this start: 1 of 37
- Called 11.8% of time when present
- Phage (with cluster) where this start called: EvePickles_55 (AY), Windest_63 (AY),

Start 11:

- Found in 1 of 71 (1.4%) of genes in pham
- No Manual Annotations of this start.
- Called 100.0% of time when present
- Phage (with cluster) where this start called: Globfish_60 (AY),

Start 12:

- Found in 67 of 71 (94.4%) of genes in pham
- Manual Annotations of this start: 36 of 37
- Called 97.0% of time when present
- Phage (with cluster) where this start called: AbbyDaisy_59 (AY), AdaS_58 (AY), Aikyam_59 (AY), Alatato_39 (FB), Amelia_65 (AS2), AmiCi24_65 (AS3), Andrew_70 (AS3), Anekin_58 (AY), Atlantica_67 (AS3), Auxilium_56 (AY), Bauer_50 (FN), Bedetta_70 (AS2), BenchScraper_59 (AY), Bhageatrice_63 (AY), Bibble12_70 (AS2), BillyTP_62 (AY), BlackSpider_46 (FN), BlueShadow_61 (AY), BrayBeast_42 (FB),

Camara_66 (AS3), Colusalem_68 (AS2), CookieBear_60 (AY), Coral_66 (AS2), Cote_69 (AS2), DanHam62_66 (AS3), Daob_67 (AS2), Faja_60 (AY), Glotell_69 (AS3), Gorpy_60 (AY), HamCheese_65 (AS3), HannahPhantana_67 (AS2), Hestia_52 (AY), Hillester_64 (AY), Isolde_59 (AY), JellyBread_57 (AY), Jerole_75 (AS2), Juno112_65 (AS3), KHumphrey_67 (AS3), Kepler_67 (AS2), Lawnathon_61 (AY), Leona_64 (AS3), Lunar_68 (AS2), MUWow_59 (AY), MaterMagnus_61 (AY), Melons_68 (AS2), MidnightRain_64 (AY), OtsoOtso_74 (AS2), Persistence_55 (AY), PhluffyCoco_66 (AS3), Phrank15_61 (AY), Pigu_44 (FB), Polka_65 (AS2), RadFad_64 (AY), Raphaella_59 (AY), Rattail_66 (AS3), RedFox_66 (AS3), Rennan12_66 (AS3), Sakai_59 (AY), Sarge_41 (FB), Seahorse_62 (AY), Shoya_47 (FB), Shukran_55 (AY), StuartMinion_59 (AS3), Vopal_62 (AY), YoungHarleezy_60 (AY),

Start 13:

- Found in 2 of 71 (2.8%) of genes in pham
- No Manual Annotations of this start.
- Called 100.0% of time when present
- Phage (with cluster) where this start called: Raqqa_52 (AY), ThayneTheZag_60 (AY),

Start 14:

- Found in 1 of 71 (1.4%) of genes in pham
- No Manual Annotations of this start.
- Called 100.0% of time when present
- Phage (with cluster) where this start called: ArV2_42 (singleton),

Summary by clusters:

There are 6 clusters represented in this pham: AS3, AS2, singleton, FB, AY, FN,

Info for manual annotations of cluster AS2:

- Start number 12 was manually annotated 9 times for cluster AS2.

Info for manual annotations of cluster AS3:

- Start number 12 was manually annotated 7 times for cluster AS3.

Info for manual annotations of cluster AY:

- Start number 10 was manually annotated 1 time for cluster AY.
- Start number 12 was manually annotated 16 times for cluster AY.

Info for manual annotations of cluster FB:

- Start number 12 was manually annotated 3 times for cluster FB.

Info for manual annotations of cluster FN:

- Start number 12 was manually annotated 1 time for cluster FN.

Gene Information:

Gene: AbbyDaisy_59 Start: 34399, Stop: 34542, Start Num: 12

Candidate Starts for AbbyDaisy_59:

(Start: 10 @34384 has 1 MA's), (Start: 12 @34399 has 36 MA's), (16, 34441), (21, 34477), (23, 34516),

Gene: AdaS_58 Start: 32216, Stop: 32359, Start Num: 12

Candidate Starts for AdaS_58:

(Start: 12 @32216 has 36 MA's), (22, 32300), (23, 32333),

Gene: Aikyam_59 Start: 32535, Stop: 32678, Start Num: 12

Candidate Starts for Aikyam_59:

(Start: 12 @32535 has 36 MA's), (22, 32619), (23, 32652),

Gene: Alatato_39 Start: 26956, Stop: 27099, Start Num: 12

Candidate Starts for Alatato_39:

(Start: 10 @26944 has 1 MA's), (Start: 12 @26956 has 36 MA's), (22, 27040), (23, 27073),

Gene: Amelia_65 Start: 36545, Stop: 36730, Start Num: 12

Candidate Starts for Amelia_65:

(Start: 12 @36545 has 36 MA's), (15, 36578), (16, 36581), (25, 36674), (30, 36707),

Gene: AmiCi24_65 Start: 37205, Stop: 37423, Start Num: 12

Candidate Starts for AmiCi24_65:

(Start: 12 @37205 has 36 MA's), (15, 37238), (16, 37241), (17, 37244), (23, 37316), (26, 37349),

Gene: Andrew_70 Start: 37551, Stop: 37742, Start Num: 12

Candidate Starts for Andrew_70:

(9, 37521), (Start: 12 @37551 has 36 MA's), (16, 37590), (17, 37593), (22, 37632), (27, 37698), (31, 37722),

Gene: Anekin_58 Start: 34074, Stop: 34217, Start Num: 12

Candidate Starts for Anekin_58:

(Start: 10 @34059 has 1 MA's), (Start: 12 @34074 has 36 MA's), (22, 34158), (23, 34191),

Gene: ArV2_42 Start: 26142, Stop: 26270, Start Num: 14

Candidate Starts for ArV2_42:

(14, 26142), (18, 26193), (22, 26211), (23, 26244), (24, 26259),

Gene: Atlantica_67 Start: 37207, Stop: 37425, Start Num: 12

Candidate Starts for Atlantica_67:

(Start: 12 @37207 has 36 MA's), (15, 37240), (16, 37243), (17, 37246), (23, 37318), (26, 37351),

Gene: Auxilium_56 Start: 31689, Stop: 31832, Start Num: 12

Candidate Starts for Auxilium_56:

(Start: 12 @31689 has 36 MA's), (22, 31773), (23, 31806),

Gene: Bauer_50 Start: 31464, Stop: 31607, Start Num: 12

Candidate Starts for Bauer_50:

(Start: 12 @31464 has 36 MA's), (22, 31548), (23, 31581),

Gene: Bedetta_70 Start: 36708, Stop: 36893, Start Num: 12

Candidate Starts for Bedetta_70:

(Start: 12 @36708 has 36 MA's), (15, 36741), (16, 36744), (25, 36837), (30, 36870),

Gene: BenchScraper_59 Start: 33727, Stop: 33870, Start Num: 12

Candidate Starts for BenchScraper_59:

(Start: 12 @33727 has 36 MA's), (22, 33811), (23, 33844),

Gene: Bhageatrice_63 Start: 36239, Stop: 36382, Start Num: 12
Candidate Starts for Bhageatrice_63:
(Start: 12 @36239 has 36 MA's), (22, 36323), (24, 36371),

Gene: Bibble12_70 Start: 36840, Stop: 37025, Start Num: 12
Candidate Starts for Bibble12_70:
(Start: 12 @36840 has 36 MA's), (25, 36969), (30, 37002),

Gene: BillyTP_62 Start: 35582, Stop: 35725, Start Num: 12
Candidate Starts for BillyTP_62:
(Start: 12 @35582 has 36 MA's), (22, 35666), (23, 35699),

Gene: BlackSpider_46 Start: 30622, Stop: 30765, Start Num: 12
Candidate Starts for BlackSpider_46:
(Start: 12 @30622 has 36 MA's), (22, 30706), (23, 30739),

Gene: BlueShadow_61 Start: 34372, Stop: 34515, Start Num: 12
Candidate Starts for BlueShadow_61:
(Start: 12 @34372 has 36 MA's), (22, 34456), (23, 34489),

Gene: BrayBeast_42 Start: 27530, Stop: 27673, Start Num: 12
Candidate Starts for BrayBeast_42:
(Start: 10 @27518 has 1 MA's), (Start: 12 @27530 has 36 MA's), (22, 27614), (23, 27647),

Gene: Camara_66 Start: 37098, Stop: 37316, Start Num: 12
Candidate Starts for Camara_66:
(Start: 12 @37098 has 36 MA's), (15, 37131), (16, 37134), (17, 37137), (23, 37209), (26, 37242),

Gene: Colusalem_68 Start: 36522, Stop: 36707, Start Num: 12
Candidate Starts for Colusalem_68:
(Start: 12 @36522 has 36 MA's), (15, 36555), (16, 36558), (25, 36651), (30, 36684),

Gene: CookieBear_60 Start: 33966, Stop: 34109, Start Num: 12
Candidate Starts for CookieBear_60:
(Start: 12 @33966 has 36 MA's), (22, 34050), (23, 34083),

Gene: Coral_66 Start: 36743, Stop: 36916, Start Num: 12
Candidate Starts for Coral_66:
(Start: 12 @36743 has 36 MA's), (25, 36869), (30, 36893),

Gene: Cote_69 Start: 37183, Stop: 37368, Start Num: 12
Candidate Starts for Cote_69:
(Start: 12 @37183 has 36 MA's), (25, 37312), (30, 37345),

Gene: DanHam62_66 Start: 37206, Stop: 37424, Start Num: 12
Candidate Starts for DanHam62_66:
(Start: 12 @37206 has 36 MA's), (15, 37239), (16, 37242), (17, 37245), (23, 37317), (26, 37350),

Gene: Daob_67 Start: 36526, Stop: 36711, Start Num: 12
Candidate Starts for Daob_67:
(Start: 12 @36526 has 36 MA's), (25, 36655), (30, 36688),

Gene: EvePickles_55 Start: 33941, Stop: 34099, Start Num: 10
Candidate Starts for EvePickles_55:
(Start: 10 @33941 has 1 MA's), (Start: 12 @33956 has 36 MA's), (22, 34040), (23, 34073),

Gene: Faja_60 Start: 35341, Stop: 35484, Start Num: 12
Candidate Starts for Faja_60:
(Start: 12 @35341 has 36 MA's), (22, 35425), (23, 35458),

Gene: Globfish_60 Start: 34395, Stop: 34538, Start Num: 11
Candidate Starts for Globfish_60:
(Start: 10 @34383 has 1 MA's), (11, 34395), (22, 34479), (23, 34512),

Gene: Glotell_69 Start: 37253, Stop: 37471, Start Num: 12
Candidate Starts for Glotell_69:
(Start: 12 @37253 has 36 MA's), (15, 37286), (16, 37289), (17, 37292), (23, 37364), (26, 37397),

Gene: Gorpy_60 Start: 34958, Stop: 35101, Start Num: 12
Candidate Starts for Gorpy_60:
(Start: 12 @34958 has 36 MA's), (22, 35042),

Gene: HamCheese_65 Start: 37193, Stop: 37411, Start Num: 12
Candidate Starts for HamCheese_65:
(Start: 12 @37193 has 36 MA's), (15, 37226), (16, 37229), (17, 37232), (23, 37304), (26, 37337), (29, 37364),

Gene: HannahPhantana_67 Start: 36540, Stop: 36725, Start Num: 12
Candidate Starts for HannahPhantana_67:
(Start: 12 @36540 has 36 MA's), (15, 36573), (16, 36576), (25, 36669), (30, 36702),

Gene: Hestia_52 Start: 31525, Stop: 31668, Start Num: 12
Candidate Starts for Hestia_52:
(Start: 12 @31525 has 36 MA's), (22, 31609), (23, 31642),

Gene: Hillester_64 Start: 35305, Stop: 35448, Start Num: 12
Candidate Starts for Hillester_64:
(Start: 12 @35305 has 36 MA's), (22, 35389), (23, 35422),

Gene: Isolde_59 Start: 33635, Stop: 33778, Start Num: 12
Candidate Starts for Isolde_59:
(Start: 12 @33635 has 36 MA's), (22, 33719), (23, 33752),

Gene: JellyBread_57 Start: 32987, Stop: 33130, Start Num: 12
Candidate Starts for JellyBread_57:
(Start: 12 @32987 has 36 MA's), (22, 33071), (23, 33104),

Gene: Jerole_75 Start: 36664, Stop: 36849, Start Num: 12
Candidate Starts for Jerole_75:
(Start: 12 @36664 has 36 MA's), (15, 36697), (16, 36700), (25, 36793), (30, 36826),

Gene: Juno112_65 Start: 37209, Stop: 37427, Start Num: 12
Candidate Starts for Juno112_65:
(Start: 12 @37209 has 36 MA's), (15, 37242), (16, 37245), (17, 37248), (23, 37320), (26, 37353),

Gene: KHumphrey_67 Start: 37094, Stop: 37300, Start Num: 12
Candidate Starts for KHumphrey_67:
(Start: 12 @37094 has 36 MA's), (15, 37127), (16, 37130), (17, 37133), (19, 37157), (22, 37172), (23, 37205), (26, 37226), (29, 37253),

Gene: Kepler_67 Start: 36529, Stop: 36711, Start Num: 12
Candidate Starts for Kepler_67:
(Start: 12 @36529 has 36 MA's), (25, 36655), (30, 36688),

Gene: Lawnathon_61 Start: 34127, Stop: 34270, Start Num: 12
Candidate Starts for Lawnathon_61:
(Start: 12 @34127 has 36 MA's), (22, 34211), (23, 34244),

Gene: Leona_64 Start: 37304, Stop: 37510, Start Num: 12
Candidate Starts for Leona_64:
(Start: 12 @37304 has 36 MA's), (15, 37337), (16, 37340), (17, 37343), (22, 37382), (26, 37436), (29, 37463),

Gene: Lunar_68 Start: 36866, Stop: 37048, Start Num: 12
Candidate Starts for Lunar_68:
(Start: 12 @36866 has 36 MA's), (25, 36992), (30, 37025),

Gene: MUWow_59 Start: 34302, Stop: 34445, Start Num: 12
Candidate Starts for MUWow_59:
(Start: 12 @34302 has 36 MA's), (22, 34386), (23, 34419),

Gene: MaterMagnus_61 Start: 34707, Stop: 34850, Start Num: 12
Candidate Starts for MaterMagnus_61:
(Start: 12 @34707 has 36 MA's), (22, 34791), (23, 34824),

Gene: Melons_68 Start: 36782, Stop: 36964, Start Num: 12
Candidate Starts for Melons_68:
(Start: 12 @36782 has 36 MA's), (25, 36908), (30, 36941),

Gene: MidnightRain_64 Start: 35476, Stop: 35619, Start Num: 12
Candidate Starts for MidnightRain_64:
(Start: 10 @35461 has 1 MA's), (Start: 12 @35476 has 36 MA's), (22, 35560), (23, 35593),

Gene: OtsoOtso_74 Start: 36395, Stop: 36580, Start Num: 12
Candidate Starts for OtsoOtso_74:
(Start: 12 @36395 has 36 MA's), (15, 36428), (16, 36431), (25, 36524), (30, 36557),

Gene: Persistence_55 Start: 32912, Stop: 33055, Start Num: 12
Candidate Starts for Persistence_55:
(Start: 10 @32897 has 1 MA's), (Start: 12 @32912 has 36 MA's),

Gene: PhluffyCoco_66 Start: 37308, Stop: 37526, Start Num: 12
Candidate Starts for PhluffyCoco_66:
(Start: 12 @37308 has 36 MA's), (15, 37341), (16, 37344), (17, 37347), (23, 37419), (26, 37452), (29, 37479),

Gene: Phrank15_61 Start: 34258, Stop: 34401, Start Num: 12
Candidate Starts for Phrank15_61:

(Start: 10 @34246 has 1 MA's), (Start: 12 @34258 has 36 MA's), (22, 34342), (23, 34375),

Gene: Pigu_44 Start: 26892, Stop: 27035, Start Num: 12

Candidate Starts for Pigu_44:

(Start: 10 @26877 has 1 MA's), (Start: 12 @26892 has 36 MA's), (22, 26976), (24, 27024),

Gene: Polka_65 Start: 36395, Stop: 36580, Start Num: 12

Candidate Starts for Polka_65:

(Start: 12 @36395 has 36 MA's), (15, 36428), (16, 36431), (25, 36524), (30, 36557),

Gene: RadFad_64 Start: 35305, Stop: 35448, Start Num: 12

Candidate Starts for RadFad_64:

(Start: 12 @35305 has 36 MA's), (22, 35389), (23, 35422),

Gene: Raphaella_59 Start: 33825, Stop: 33968, Start Num: 12

Candidate Starts for Raphaella_59:

(Start: 12 @33825 has 36 MA's), (22, 33909), (23, 33942),

Gene: Raqqa_52 Start: 31562, Stop: 31702, Start Num: 13

Candidate Starts for Raqqa_52:

(1, 31202), (2, 31214), (3, 31319), (7, 31481), (Start: 10 @31547 has 1 MA's), (13, 31562), (22, 31643), (23, 31676),

Gene: Rattail_66 Start: 37393, Stop: 37599, Start Num: 12

Candidate Starts for Rattail_66:

(Start: 12 @37393 has 36 MA's), (15, 37426), (16, 37429), (17, 37432), (19, 37456), (22, 37471), (23, 37504), (26, 37525), (29, 37552),

Gene: RedFox_66 Start: 37306, Stop: 37524, Start Num: 12

Candidate Starts for RedFox_66:

(Start: 12 @37306 has 36 MA's), (15, 37339), (16, 37342), (17, 37345), (23, 37417), (26, 37450), (29, 37477), (32, 37507),

Gene: Renna12_66 Start: 37425, Stop: 37637, Start Num: 12

Candidate Starts for Renna12_66:

(Start: 12 @37425 has 36 MA's), (15, 37458), (16, 37461), (17, 37464), (22, 37503), (26, 37569),

Gene: Sakai_59 Start: 33669, Stop: 33812, Start Num: 12

Candidate Starts for Sakai_59:

(Start: 12 @33669 has 36 MA's), (22, 33753),

Gene: Sarge_41 Start: 26391, Stop: 26534, Start Num: 12

Candidate Starts for Sarge_41:

(Start: 10 @26376 has 1 MA's), (Start: 12 @26391 has 36 MA's), (22, 26475), (23, 26508),

Gene: Seahorse_62 Start: 35812, Stop: 35955, Start Num: 12

Candidate Starts for Seahorse_62:

(4, 35590), (6, 35644), (8, 35773), (Start: 12 @35812 has 36 MA's), (16, 35854), (20, 35884), (23, 35929),

Gene: Shoya_47 Start: 28359, Stop: 28499, Start Num: 12

Candidate Starts for Shoya_47:

(Start: 10 @28344 has 1 MA's), (Start: 12 @28359 has 36 MA's), (21, 28434), (22, 28440), (23, 28473),

Gene: Shukran_55 Start: 32302, Stop: 32445, Start Num: 12

Candidate Starts for Shukran_55:

(Start: 10 @32287 has 1 MA's), (Start: 12 @32302 has 36 MA's),

Gene: StuartMinion_59 Start: 33673, Stop: 33888, Start Num: 12

Candidate Starts for StuartMinion_59:

(5, 33502), (Start: 12 @33673 has 36 MA's), (15, 33706), (16, 33709), (18, 33733), (28, 33835), (29, 33838), (32, 33871),

Gene: ThayneTheZag_60 Start: 33531, Stop: 33671, Start Num: 13

Candidate Starts for ThayneTheZag_60:

(7, 33447), (Start: 10 @33516 has 1 MA's), (13, 33531), (21, 33606), (22, 33612), (23, 33645),

Gene: Vopal_62 Start: 36984, Stop: 37127, Start Num: 12

Candidate Starts for Vopal_62:

(Start: 10 @36972 has 1 MA's), (Start: 12 @36984 has 36 MA's), (18, 37050), (22, 37068), (23, 37101),

Gene: Windest_63 Start: 32948, Stop: 33103, Start Num: 10

Candidate Starts for Windest_63:

(Start: 10 @32948 has 1 MA's), (Start: 12 @32960 has 36 MA's), (22, 33044),

Gene: YoungHarleezy_60 Start: 34364, Stop: 34507, Start Num: 12

Candidate Starts for YoungHarleezy_60:

(Start: 12 @34364 has 36 MA's), (22, 34448), (23, 34481),