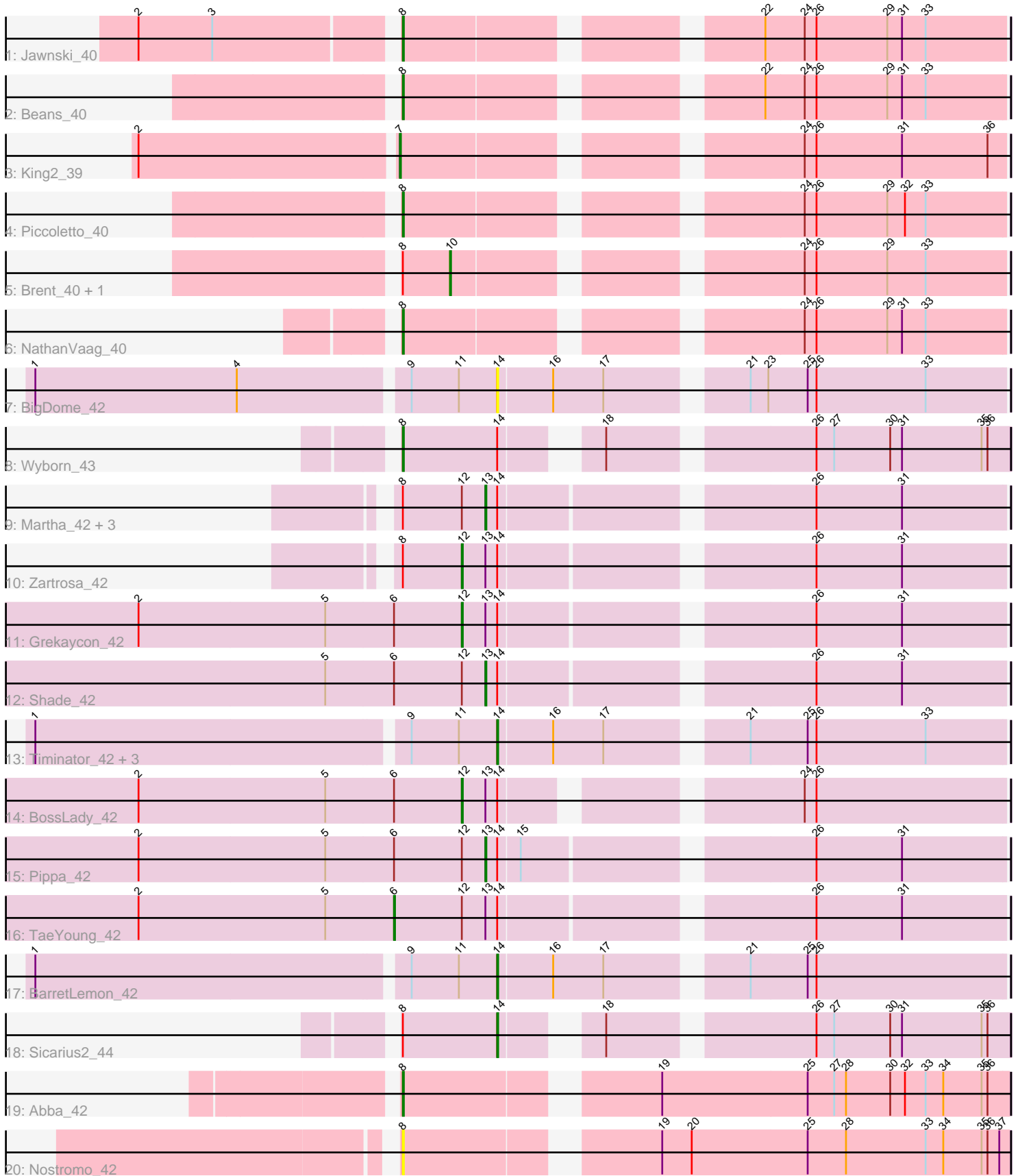


Pham 210347



Note: Tracks are now grouped by subcluster and scaled. Switching in subcluster is indicated by changes in track color. Track scale is now set by default to display the region 30 bp upstream of start 1 to 30 bp downstream of the last possible start. If this default region is judged to be packed too tightly with annotated starts, the track will be further scaled to only show that region of the ORF with annotated starts. This action will be indicated by adding "Zoomed" to the title. For starts, yellow indicates the location of called starts comprised solely of Glimmer/GeneMark auto-annotations, green indicates the location of called starts with at least 1 manual gene annotation.

## Pham 210347 Report

This analysis was run 02/22/25 on database version 588.

Pham number 210347 has 27 members, 2 are drafts.

Phages represented in each track:

- Track 1 : Jawnski\_40
- Track 2 : Beans\_40
- Track 3 : King2\_39
- Track 4 : Piccoletto\_40
- Track 5 : Brent\_40, Franzy\_40
- Track 6 : NathanVaag\_40
- Track 7 : BigDome\_42
- Track 8 : Wyborn\_43
- Track 9 : Martha\_42, JKerns\_42, Sonny\_42, Jordan\_42
- Track 10 : Zartrosa\_42
- Track 11 : Grekaycon\_42
- Track 12 : Shade\_42
- Track 13 : Timinator\_42, LeeroyJ\_42, GravityBall\_42, StevieBAY\_42
- Track 14 : BossLady\_42
- Track 15 : Pippa\_42
- Track 16 : TaeYoung\_42
- Track 17 : BarretLemon\_42
- Track 18 : Sicarius2\_44
- Track 19 : Abba\_42
- Track 20 : Nostromo\_42

### ***Summary of Final Annotations (See graph section above for start numbers):***

The start number called the most often in the published annotations is 13, it was called in 6 of the 25 non-draft genes in the pham.

Genes that call this "Most Annotated" start:

- JKerns\_42, Jordan\_42, Martha\_42, Pippa\_42, Shade\_42, Sonny\_42,

Genes that have the "Most Annotated" start but do not call it:

- BossLady\_42, Grekaycon\_42, TaeYoung\_42, Zartrosa\_42,

Genes that do not have the "Most Annotated" start:

- Abba\_42, BarretLemon\_42, Beans\_40, BigDome\_42, Brent\_40, Franzy\_40, GravityBall\_42, Jawnski\_40, King2\_39, LeeroyJ\_42, NathanVaag\_40, Nostromo\_42, Piccoletto\_40, Sicarius2\_44, StevieBAY\_42, Timinator\_42, Wyborn\_43,

### Summary by start number:

#### Start 6:

- Found in 5 of 27 ( 18.5% ) of genes in pham
- Manual Annotations of this start: 1 of 25
- Called 20.0% of time when present
- Phage (with cluster) where this start called: TaeYoung\_42 (AO2),

#### Start 7:

- Found in 1 of 27 ( 3.7% ) of genes in pham
- Manual Annotations of this start: 1 of 25
- Called 100.0% of time when present
- Phage (with cluster) where this start called: King2\_39 (AO1),

#### Start 8:

- Found in 15 of 27 ( 55.6% ) of genes in pham
- Manual Annotations of this start: 6 of 25
- Called 46.7% of time when present
- Phage (with cluster) where this start called: Abba\_42 (AO3), Beans\_40 (AO1), Jawnski\_40 (AO1), NathanVaag\_40 (AO1), Nostromo\_42 (AO3), Piccoletto\_40 (AO1), Wyborn\_43 (AO2),

#### Start 10:

- Found in 2 of 27 ( 7.4% ) of genes in pham
- Manual Annotations of this start: 2 of 25
- Called 100.0% of time when present
- Phage (with cluster) where this start called: Brent\_40 (AO1), Franzy\_40 (AO1),

#### Start 12:

- Found in 10 of 27 ( 37.0% ) of genes in pham
- Manual Annotations of this start: 3 of 25
- Called 30.0% of time when present
- Phage (with cluster) where this start called: BossLady\_42 (AO2), Grekaycon\_42 (AO2), Zartrosa\_42 (AO2),

#### Start 13:

- Found in 10 of 27 ( 37.0% ) of genes in pham
- Manual Annotations of this start: 6 of 25
- Called 60.0% of time when present
- Phage (with cluster) where this start called: JKerns\_42 (AO2), Jordan\_42 (AO2), Martha\_42 (AO2), Pippa\_42 (AO2), Shade\_42 (AO2), Sonny\_42 (AO2),

#### Start 14:

- Found in 18 of 27 ( 66.7% ) of genes in pham
- Manual Annotations of this start: 6 of 25
- Called 38.9% of time when present
- Phage (with cluster) where this start called: BarretLemon\_42 (AO2), BigDome\_42 (AO2), GravityBall\_42 (AO2), LeeroyJ\_42 (AO2), Sicarius2\_44 (AO2), StevieBAY\_42 (AO2), Timinator\_42 (AO2),

## Summary by clusters:

There are 3 clusters represented in this pham: AO3, AO2, AO1,

Info for manual annotations of cluster AO1:

- Start number 7 was manually annotated 1 time for cluster AO1.
- Start number 8 was manually annotated 4 times for cluster AO1.
- Start number 10 was manually annotated 2 times for cluster AO1.

Info for manual annotations of cluster AO2:

- Start number 6 was manually annotated 1 time for cluster AO2.
- Start number 8 was manually annotated 1 time for cluster AO2.
- Start number 12 was manually annotated 3 times for cluster AO2.
- Start number 13 was manually annotated 6 times for cluster AO2.
- Start number 14 was manually annotated 6 times for cluster AO2.

Info for manual annotations of cluster AO3:

- Start number 8 was manually annotated 1 time for cluster AO3.

## Gene Information:

Gene: Abba\_42 Start: 32269, Stop: 32844, Start Num: 8

Candidate Starts for Abba\_42:

(Start: 8 @32269 has 6 MA's), (19, 32494), (25, 32641), (27, 32668), (28, 32680), (30, 32725), (32, 32740), (33, 32761), (34, 32779), (35, 32818), (36, 32824),

Gene: BarretLemon\_42 Start: 34040, Stop: 34525, Start Num: 14

Candidate Starts for BarretLemon\_42:

(1, 33587), (9, 33953), (11, 34001), (Start: 14 @34040 has 6 MA's), (16, 34094), (17, 34145), (21, 34268), (25, 34325), (26, 34334),

Gene: Beans\_40 Start: 33728, Stop: 34282, Start Num: 8

Candidate Starts for Beans\_40:

(Start: 8 @33728 has 6 MA's), (22, 34040), (24, 34079), (26, 34091), (29, 34163), (31, 34178), (33, 34202),

Gene: BigDome\_42 Start: 34064, Stop: 34549, Start Num: 14

Candidate Starts for BigDome\_42:

(1, 33611), (4, 33815), (9, 33977), (11, 34025), (Start: 14 @34064 has 6 MA's), (16, 34118), (17, 34169), (21, 34292), (23, 34310), (25, 34349), (26, 34358), (33, 34469),

Gene: BossLady\_42 Start: 34026, Stop: 34520, Start Num: 12

Candidate Starts for BossLady\_42:

(2, 33699), (5, 33888), (Start: 6 @33957 has 1 MA's), (Start: 12 @34026 has 3 MA's), (Start: 13 @34050 has 6 MA's), (Start: 14 @34062 has 6 MA's), (24, 34317), (26, 34329),

Gene: Brent\_40 Start: 33738, Stop: 34244, Start Num: 10

Candidate Starts for Brent\_40:

(Start: 8 @33690 has 6 MA's), (Start: 10 @33738 has 2 MA's), (24, 34041), (26, 34053), (29, 34125), (33, 34164),

Gene: Franzy\_40 Start: 33754, Stop: 34260, Start Num: 10  
Candidate Starts for Franzy\_40:  
(Start: 8 @33706 has 6 MA's), (Start: 10 @33754 has 2 MA's), (24, 34057), (26, 34069), (29, 34141),  
(33, 34180),

Gene: GravityBall\_42 Start: 34070, Stop: 34555, Start Num: 14  
Candidate Starts for GravityBall\_42:  
(1, 33617), (9, 33983), (11, 34031), (Start: 14 @34070 has 6 MA's), (16, 34124), (17, 34175), (21,  
34298), (25, 34355), (26, 34364), (33, 34475),

Gene: Grekaycon\_42 Start: 33972, Stop: 34487, Start Num: 12  
Candidate Starts for Grekaycon\_42:  
(2, 33645), (5, 33834), (Start: 6 @33903 has 1 MA's), (Start: 12 @33972 has 3 MA's), (Start: 13  
@33996 has 6 MA's), (Start: 14 @34008 has 6 MA's), (26, 34296), (31, 34383),

Gene: JKerns\_42 Start: 34045, Stop: 34536, Start Num: 13  
Candidate Starts for JKerns\_42:  
(Start: 8 @33961 has 6 MA's), (Start: 12 @34021 has 3 MA's), (Start: 13 @34045 has 6 MA's), (Start:  
14 @34057 has 6 MA's), (26, 34345), (31, 34432),

Gene: Jawnski\_40 Start: 33678, Stop: 34232, Start Num: 8  
Candidate Starts for Jawnski\_40:  
(2, 33435), (3, 33510), (Start: 8 @33678 has 6 MA's), (22, 33990), (24, 34029), (26, 34041), (29,  
34113), (31, 34128), (33, 34152),

Gene: Jordan\_42 Start: 34082, Stop: 34573, Start Num: 13  
Candidate Starts for Jordan\_42:  
(Start: 8 @33998 has 6 MA's), (Start: 12 @34058 has 3 MA's), (Start: 13 @34082 has 6 MA's), (Start:  
14 @34094 has 6 MA's), (26, 34382), (31, 34469),

Gene: King2\_39 Start: 33684, Stop: 34241, Start Num: 7  
Candidate Starts for King2\_39:  
(2, 33432), (Start: 7 @33684 has 1 MA's), (24, 34038), (26, 34050), (31, 34137), (36, 34224),

Gene: LeeroyJ\_42 Start: 34009, Stop: 34494, Start Num: 14  
Candidate Starts for LeeroyJ\_42:  
(1, 33556), (9, 33922), (11, 33970), (Start: 14 @34009 has 6 MA's), (16, 34063), (17, 34114), (21,  
34237), (25, 34294), (26, 34303), (33, 34414),

Gene: Martha\_42 Start: 33973, Stop: 34464, Start Num: 13  
Candidate Starts for Martha\_42:  
(Start: 8 @33889 has 6 MA's), (Start: 12 @33949 has 3 MA's), (Start: 13 @33973 has 6 MA's), (Start:  
14 @33985 has 6 MA's), (26, 34273), (31, 34360),

Gene: NathanVaag\_40 Start: 33677, Stop: 34231, Start Num: 8  
Candidate Starts for NathanVaag\_40:  
(Start: 8 @33677 has 6 MA's), (24, 34028), (26, 34040), (29, 34112), (31, 34127), (33, 34151),

Gene: Nostromo\_42 Start: 32524, Stop: 33099, Start Num: 8  
Candidate Starts for Nostromo\_42:  
(Start: 8 @32524 has 6 MA's), (19, 32749), (20, 32779), (25, 32896), (28, 32935), (33, 33016), (34,  
33034), (35, 33073), (36, 33079), (37, 33091),

Gene: Piccoletto\_40 Start: 33702, Stop: 34256, Start Num: 8

Candidate Starts for Piccoletto\_40:

(Start: 8 @33702 has 6 MA's), (24, 34053), (26, 34065), (29, 34137), (32, 34155), (33, 34176),

Gene: Pippa\_42 Start: 34152, Stop: 34643, Start Num: 13

Candidate Starts for Pippa\_42:

(2, 33801), (5, 33990), (Start: 6 @34059 has 1 MA's), (Start: 12 @34128 has 3 MA's), (Start: 13 @34152 has 6 MA's), (Start: 14 @34164 has 6 MA's), (15, 34185), (26, 34452), (31, 34539),

Gene: Shade\_42 Start: 34080, Stop: 34571, Start Num: 13

Candidate Starts for Shade\_42:

(5, 33918), (Start: 6 @33987 has 1 MA's), (Start: 12 @34056 has 3 MA's), (Start: 13 @34080 has 6 MA's), (Start: 14 @34092 has 6 MA's), (26, 34380), (31, 34467),

Gene: Sicarius2\_44 Start: 33727, Stop: 34182, Start Num: 14

Candidate Starts for Sicarius2\_44:

(Start: 8 @33631 has 6 MA's), (Start: 14 @33727 has 6 MA's), (18, 33799), (26, 33985), (27, 34003), (30, 34060), (31, 34072), (35, 34153), (36, 34159),

Gene: Sonny\_42 Start: 34091, Stop: 34582, Start Num: 13

Candidate Starts for Sonny\_42:

(Start: 8 @34007 has 6 MA's), (Start: 12 @34067 has 3 MA's), (Start: 13 @34091 has 6 MA's), (Start: 14 @34103 has 6 MA's), (26, 34391), (31, 34478),

Gene: StevieBAY\_42 Start: 34070, Stop: 34555, Start Num: 14

Candidate Starts for StevieBAY\_42:

(1, 33617), (9, 33983), (11, 34031), (Start: 14 @34070 has 6 MA's), (16, 34124), (17, 34175), (21, 34298), (25, 34355), (26, 34364), (33, 34475),

Gene: TaeYoung\_42 Start: 33904, Stop: 34488, Start Num: 6

Candidate Starts for TaeYoung\_42:

(2, 33646), (5, 33835), (Start: 6 @33904 has 1 MA's), (Start: 12 @33973 has 3 MA's), (Start: 13 @33997 has 6 MA's), (Start: 14 @34009 has 6 MA's), (26, 34297), (31, 34384),

Gene: Timinator\_42 Start: 34009, Stop: 34494, Start Num: 14

Candidate Starts for Timinator\_42:

(1, 33556), (9, 33922), (11, 33970), (Start: 14 @34009 has 6 MA's), (16, 34063), (17, 34114), (21, 34237), (25, 34294), (26, 34303), (33, 34414),

Gene: Wyborn\_43 Start: 34183, Stop: 34734, Start Num: 8

Candidate Starts for Wyborn\_43:

(Start: 8 @34183 has 6 MA's), (Start: 14 @34279 has 6 MA's), (18, 34351), (26, 34537), (27, 34555), (30, 34612), (31, 34624), (35, 34705), (36, 34711),

Gene: Zartrosa\_42 Start: 33974, Stop: 34489, Start Num: 12

Candidate Starts for Zartrosa\_42:

(Start: 8 @33914 has 6 MA's), (Start: 12 @33974 has 3 MA's), (Start: 13 @33998 has 6 MA's), (Start: 14 @34010 has 6 MA's), (26, 34298), (31, 34385),