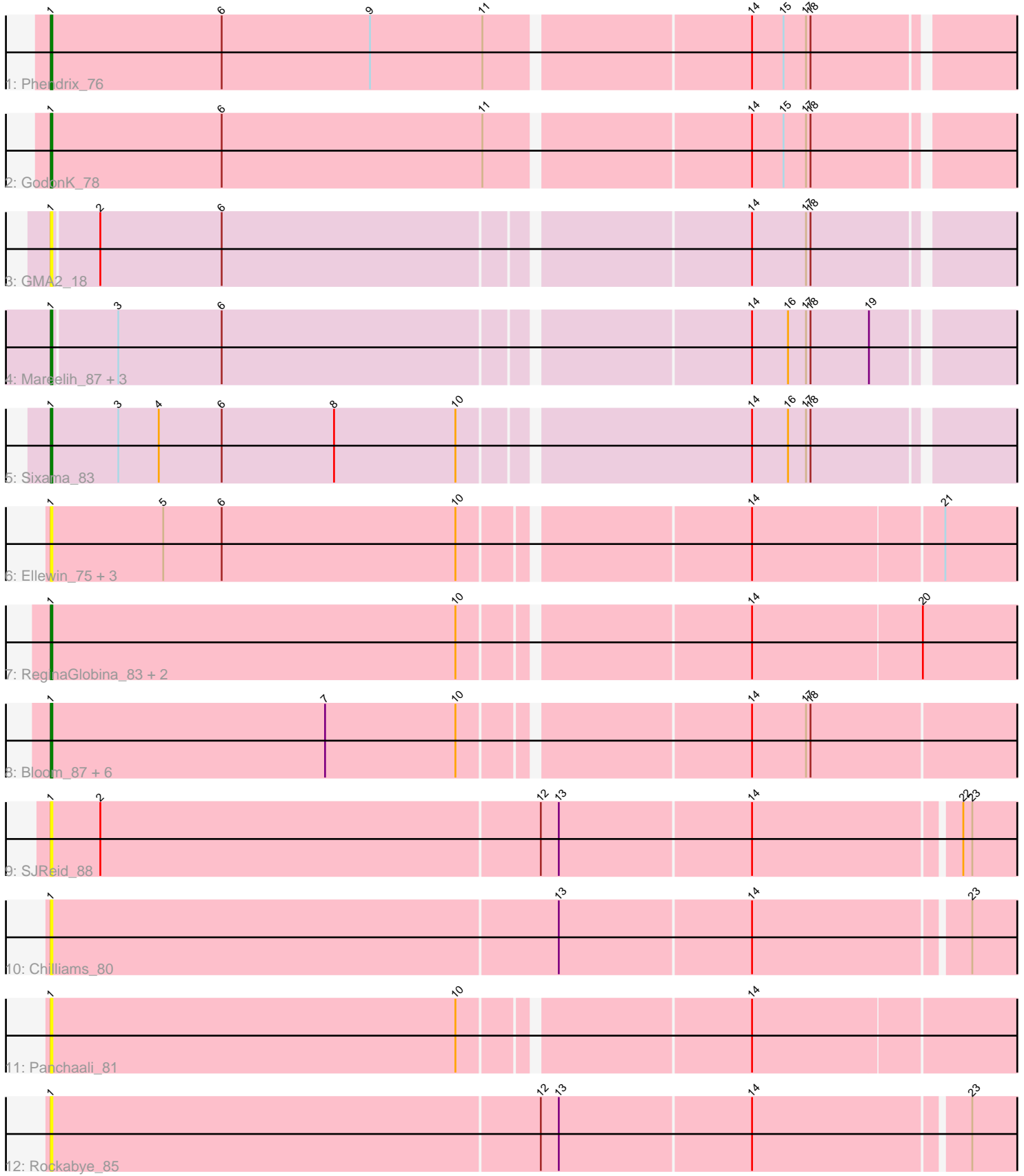


Pham 210350



Note: Tracks are now grouped by subcluster and scaled. Switching in subcluster is indicated by changes in track color. Track scale is now set by default to display the region 30 bp upstream of start 1 to 30 bp downstream of the last possible start. If this default region is judged to be packed too tightly with annotated starts, the track will be further scaled to only show that region of the ORF with annotated starts. This action will be indicated by adding "Zoomed" to the title. For starts, yellow indicates the location of called starts comprised solely of Glimmer/GeneMark auto-annotations, green indicates the location of called starts with at least 1 manual gene annotation.

Pham 210350 Report

This analysis was run 02/22/25 on database version 588.

Pham number 210350 has 26 members, 15 are drafts.

Phages represented in each track:

- Track 1 : Phendrix_76
- Track 2 : GodonK_78
- Track 3 : GMA2_18
- Track 4 : Mareelih_87, BlueNGold_88, Boopy_89, Forza_89
- Track 5 : Sixama_83
- Track 6 : Ellewin_75, KSunshine22_78, WaddleDee_77, DunneganBoMo_77
- Track 7 : ReginaGlobina_83, LeoJr_83, Atuin_78
- Track 8 : Bloom_87, GoldenEssence_72, Mimi_83, Patbob_84, Phrampa_77, Racecar_84, Talia1610_83
- Track 9 : SJReid_88
- Track 10 : Chilliams_80
- Track 11 : Panchaali_81
- Track 12 : Rockabye_85

Summary of Final Annotations (See graph section above for start numbers):

The start number called the most often in the published annotations is 1, it was called in 11 of the 11 non-draft genes in the pham.

Genes that call this "Most Annotated" start:

- Atuin_78, Bloom_87, BlueNGold_88, Boopy_89, Chilliams_80, DunneganBoMo_77, Ellewin_75, Forza_89, GMA2_18, GodonK_78, GoldenEssence_72, KSunshine22_78, LeoJr_83, Mareelih_87, Mimi_83, Panchaali_81, Patbob_84, Phendrix_76, Phrampa_77, Racecar_84, ReginaGlobina_83, Rockabye_85, SJReid_88, Sixama_83, Talia1610_83, WaddleDee_77,

Genes that have the "Most Annotated" start but do not call it:

-

Genes that do not have the "Most Annotated" start:

-

Summary by start number:

Start 1:

- Found in 26 of 26 (100.0%) of genes in pham
- Manual Annotations of this start: 11 of 11
- Called 100.0% of time when present
- Phage (with cluster) where this start called: Atuin_78 (FC), Bloom_87 (FC), BlueNGold_88 (DS), Boopy_89 (DS), Chilliams_80 (FC), DunneganBoMo_77 (FC), Ellewin_75 (FC), Forza_89 (DS), GMA2_18 (DS), GodonK_78 (DK), GoldenEssence_72 (FC), KSunshine22_78 (FC), LeoJr_83 (FC), Mareelih_87 (DS), Mimi_83 (FC), Panchaali_81 (FC), Patbob_84 (FC), Phendrix_76 (DK), Phrampa_77 (FC), Racecar_84 (FC), ReginaGlobina_83 (FC), Rockabye_85 (FC), SJReid_88 (FC), Sixama_83 (DS), Talia1610_83 (FC), WaddleDee_77 (FC),

Summary by clusters:

There are 3 clusters represented in this pham: FC, DS, DK,

Info for manual annotations of cluster DK:

- Start number 1 was manually annotated 2 times for cluster DK.

Info for manual annotations of cluster DS:

- Start number 1 was manually annotated 5 times for cluster DS.

Info for manual annotations of cluster FC:

- Start number 1 was manually annotated 4 times for cluster FC.

Gene Information:

Gene: Atuin_78 Start: 49765, Stop: 50412, Start Num: 1

Candidate Starts for Atuin_78:

(Start: 1 @49765 has 11 MA's), (10, 50035), (14, 50215), (20, 50326),

Gene: Bloom_87 Start: 51166, Stop: 51822, Start Num: 1

Candidate Starts for Bloom_87:

(Start: 1 @51166 has 11 MA's), (7, 51349), (10, 51436), (14, 51616), (17, 51652), (18, 51655),

Gene: BlueNGold_88 Start: 44419, Stop: 45063, Start Num: 1

Candidate Starts for BlueNGold_88:

(Start: 1 @44419 has 11 MA's), (3, 44461), (6, 44530), (14, 44866), (16, 44890), (17, 44902), (18, 44905), (19, 44944),

Gene: Boopy_89 Start: 44431, Stop: 45075, Start Num: 1

Candidate Starts for Boopy_89:

(Start: 1 @44431 has 11 MA's), (3, 44473), (6, 44542), (14, 44878), (16, 44902), (17, 44914), (18, 44917), (19, 44956),

Gene: Chilliams_80 Start: 52992, Stop: 53651, Start Num: 1

Candidate Starts for Chilliams_80:

(Start: 1 @52992 has 11 MA's), (13, 53328), (14, 53454), (23, 53592),

Gene: DunneganBoMo_77 Start: 46623, Stop: 47267, Start Num: 1

Candidate Starts for DunneganBoMo_77:

(Start: 1 @46623 has 11 MA's), (5, 46698), (6, 46737), (10, 46893), (14, 47073), (21, 47196),

Gene: Ellewin_75 Start: 46218, Stop: 46862, Start Num: 1

Candidate Starts for Ellewin_75:

(Start: 1 @46218 has 11 MA's), (5, 46293), (6, 46332), (10, 46488), (14, 46668), (21, 46791),

Gene: Forza_89 Start: 44347, Stop: 44991, Start Num: 1

Candidate Starts for Forza_89:

(Start: 1 @44347 has 11 MA's), (3, 44389), (6, 44458), (14, 44794), (16, 44818), (17, 44830), (18, 44833), (19, 44872),

Gene: GMA2_18 Start: 17722, Stop: 18366, Start Num: 1

Candidate Starts for GMA2_18:

(Start: 1 @17722 has 11 MA's), (2, 17752), (6, 17833), (14, 18169), (17, 18205), (18, 18208),

Gene: GodonK_78 Start: 39164, Stop: 39817, Start Num: 1

Candidate Starts for GodonK_78:

(Start: 1 @39164 has 11 MA's), (6, 39278), (11, 39452), (14, 39620), (15, 39641), (17, 39656), (18, 39659),

Gene: GoldenEssence_72 Start: 44959, Stop: 45615, Start Num: 1

Candidate Starts for GoldenEssence_72:

(Start: 1 @44959 has 11 MA's), (7, 45142), (10, 45229), (14, 45409), (17, 45445), (18, 45448),

Gene: KSunshine22_78 Start: 47857, Stop: 48501, Start Num: 1

Candidate Starts for KSunshine22_78:

(Start: 1 @47857 has 11 MA's), (5, 47932), (6, 47971), (10, 48127), (14, 48307), (21, 48430),

Gene: LeoJr_83 Start: 49893, Stop: 50540, Start Num: 1

Candidate Starts for LeoJr_83:

(Start: 1 @49893 has 11 MA's), (10, 50163), (14, 50343), (20, 50454),

Gene: Mareelih_87 Start: 43849, Stop: 44493, Start Num: 1

Candidate Starts for Mareelih_87:

(Start: 1 @43849 has 11 MA's), (3, 43891), (6, 43960), (14, 44296), (16, 44320), (17, 44332), (18, 44335), (19, 44374),

Gene: Mimi_83 Start: 50513, Stop: 51169, Start Num: 1

Candidate Starts for Mimi_83:

(Start: 1 @50513 has 11 MA's), (7, 50696), (10, 50783), (14, 50963), (17, 50999), (18, 51002),

Gene: Panchaali_81 Start: 47609, Stop: 48253, Start Num: 1

Candidate Starts for Panchaali_81:

(Start: 1 @47609 has 11 MA's), (10, 47879), (14, 48059),

Gene: Patbob_84 Start: 51385, Stop: 52041, Start Num: 1

Candidate Starts for Patbob_84:

(Start: 1 @51385 has 11 MA's), (7, 51568), (10, 51655), (14, 51835), (17, 51871), (18, 51874),

Gene: Phendrix_76 Start: 39032, Stop: 39685, Start Num: 1

Candidate Starts for Phendrix_76:

(Start: 1 @39032 has 11 MA's), (6, 39146), (9, 39245), (11, 39320), (14, 39488), (15, 39509), (17, 39524), (18, 39527),

Gene: Phrampa_77 Start: 48087, Stop: 48746, Start Num: 1

Candidate Starts for Phrampa_77:

(Start: 1 @48087 has 11 MA's), (7, 48270), (10, 48357), (14, 48540), (17, 48576), (18, 48579),

Gene: Racecar_84 Start: 51166, Stop: 51822, Start Num: 1

Candidate Starts for Racecar_84:

(Start: 1 @51166 has 11 MA's), (7, 51349), (10, 51436), (14, 51616), (17, 51652), (18, 51655),

Gene: ReginaGlobina_83 Start: 50645, Stop: 51292, Start Num: 1

Candidate Starts for ReginaGlobina_83:

(Start: 1 @50645 has 11 MA's), (10, 50915), (14, 51095), (20, 51206),

Gene: Rockabye_85 Start: 53344, Stop: 54003, Start Num: 1

Candidate Starts for Rockabye_85:

(Start: 1 @53344 has 11 MA's), (12, 53668), (13, 53680), (14, 53806), (23, 53944),

Gene: SJReid_88 Start: 52426, Stop: 53082, Start Num: 1

Candidate Starts for SJReid_88:

(Start: 1 @52426 has 11 MA's), (2, 52459), (12, 52750), (13, 52762), (14, 52888), (22, 53020), (23, 53026),

Gene: Sixama_83 Start: 44174, Stop: 44824, Start Num: 1

Candidate Starts for Sixama_83:

(Start: 1 @44174 has 11 MA's), (3, 44219), (4, 44246), (6, 44288), (8, 44363), (10, 44444), (14, 44627), (16, 44651), (17, 44663), (18, 44666),

Gene: Talia1610_83 Start: 50531, Stop: 51187, Start Num: 1

Candidate Starts for Talia1610_83:

(Start: 1 @50531 has 11 MA's), (7, 50714), (10, 50801), (14, 50981), (17, 51017), (18, 51020),

Gene: WaddleDee_77 Start: 46478, Stop: 47122, Start Num: 1

Candidate Starts for WaddleDee_77:

(Start: 1 @46478 has 11 MA's), (5, 46553), (6, 46592), (10, 46748), (14, 46928), (21, 47051),