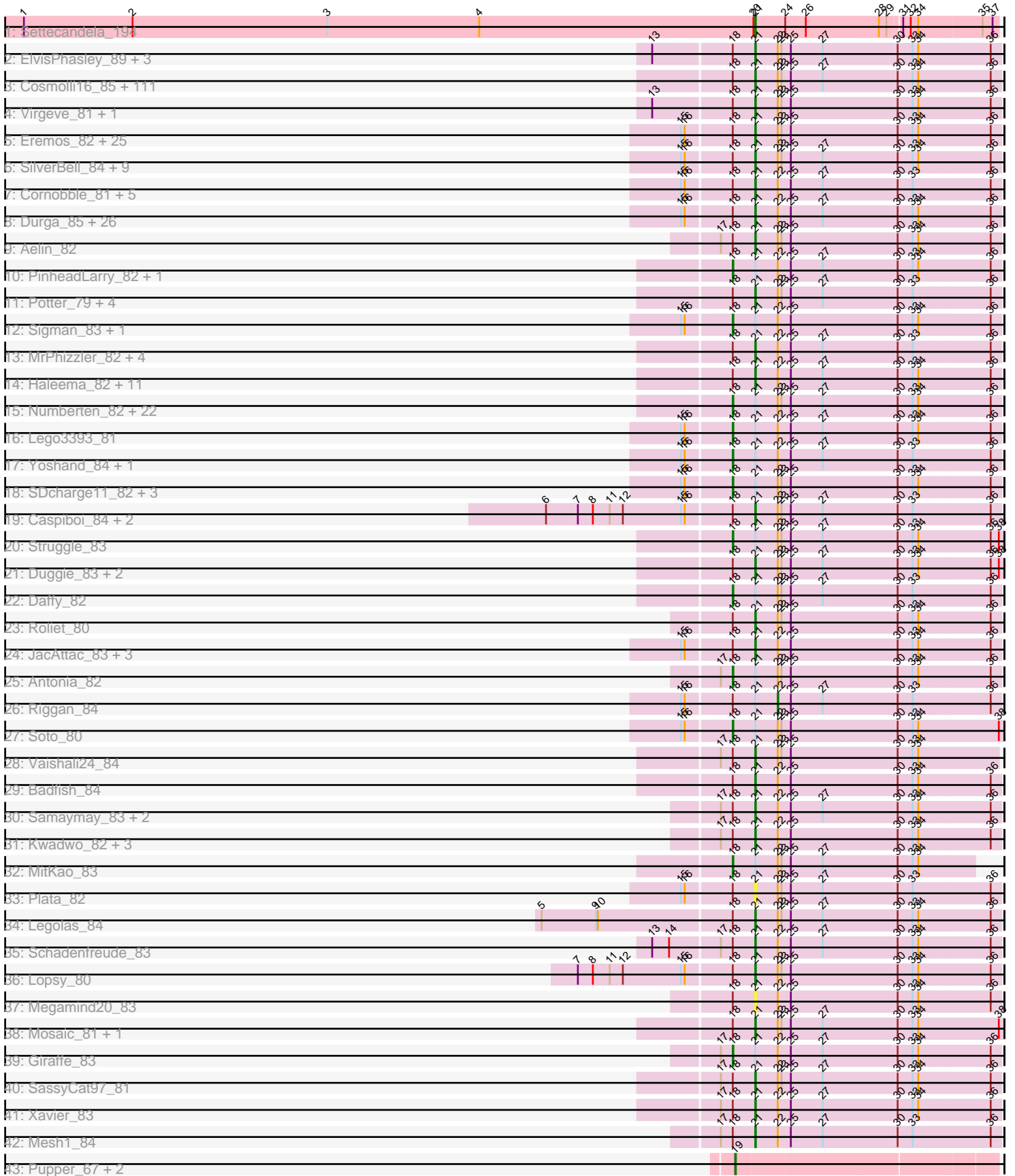


Pham 210760



Note: Tracks are now grouped by subcluster and scaled. Switching in subcluster is indicated by changes in track color. Track scale is now set by default to display the region 30 bp upstream of start 1 to 30 bp downstream of the last possible start. If this default region is judged to be packed too tightly with annotated starts, the track will be further scaled to only show that region of the ORF with annotated starts. This action will be indicated by adding "Zoomed" to the title. For starts, yellow indicates the location of called starts comprised solely of Glimmer/GeneMark auto-annotations, green indicates the location of called starts with at least 1 manual gene annotation.

Pham 210760 Report

This analysis was run 02/22/25 on database version 588.

Pham number 210760 has 285 members, 23 are drafts.

Phages represented in each track:

- Track 1 : Settecandela_194
- Track 2 : ElvisPhasley_89, RedMaple_83, Eugenia_85, Nathan_84
- Track 3 : Cosmolli16_85, Anderson_85, TyrionL_83, HenryJackson_84, LeeLot_82, Phipps_82, Squiggle_82, Lumine_84, Jillium_84, Slatt_83, DonSanchon_79, Chah_85, Andre_85, Hocus_81, Cannibal_84, Toni_83, Etaye_82, HSavage_81, Doddsville_81, OliverWalter_83, Labeouficaum_83, Mecca_83, Fozzie_81, Childish_83, Derpp_83, Frankicide_82, Lulumae_80, Orfeu_82, CharlieGBrown_81, JDog_82, Maskar_84, MelsMeow_82, Selr12_84, PhrodoBaggins_85, Spartan300_82, Cher_83, YouGoGlencoco_83, Buckeye_83, FugateOSU_83, PhatCats2014_83, Zaider_84, DuchessDung_81, Adriana_83, Orwigg_82, Gareth_83, ProfessorX_81, GeneCoco_84, Virapocalypse_84, Zelda_83, LuckyMarjie_80, Coletti_85, Grand2040_81, Burr_83, Swiphy_87, UncleHowie_80, Bluephacebaby_82, ABU_82, JakeO_84, Melc17_80, Keitherie_86, LostAndPhound_82, Morty_84, Thora_82, DoesntMatter_80, Scrick_82, Mesmerelda_84, Freya_80, KingTut_74, ImtiyazSitla_84, Chute_83, Oosterbaan_83, HighStump_84, PG1_82, Ashraf_84, Vortex_82, Mutante_84, Kahve_84, Mulan_82, Mana_81, Magic8_82, Fang_84, AbsoluteMadLad_82, Dati_80, Kimbrough_84, Placalicious_82, Omniscient_84, Orion_82, Serendipity_83, Waterdiva_84, Jesabah_82, ThreeOh3D2_85, Trypo_84, Gophee_83, Simielle_82, Maru_83, UAch1_84, PhatLouie_85, Emiris_85, Dice_82, Skippy_84, Charles1_84, Timmi_82, Matalotodo_82, Scoot17C_84, True_81, Weher20_80, Nyala_82, JangoPhett_81, Kwksand96_84, Cornbread_83, Brilliant_86, Murdoc_80
- Track 4 : Virgeve_81, Plmatters_81
- Track 5 : Eremos_82, Gwilliam_84, Carthage_84, AltPhacts_81, Dingo_80, Boehler_82, Robyn_85, Inverness_81, Roscoe_83, Basato_82, Riverton_82, Manad_82, Usavi_84, Hamish_80, MiniBoss_80, TooFast2Furius_85, Chipette_82, CheetO_80, Crownjwl_81, Horchata_80, Mikota_80, Iridessa_87, Sheila_79, KingVeVeVe_81, Newman_81, Chunky_83
- Track 6 : SilverBell_84, Gwennie1_80, Podrick_82, Beaglebox_80, Nicole21_84, DirtJuice_83, Olive_81, Lulwa_80, Pops_81, Telesworld_81
- Track 7 : Cornobble_81, Pherdinand_84, BlackStallion_82, Thunderbird_83, Pacifista_82, Swish_84
- Track 8 : Durga_85, BatteryCK_81, Inchworm_84, Hartsy_82, AngelCake_80, Oline_82, Kailash_81, Phleuron_81, Pinkman_83, Zonia_84, Longacauda_84, Wallhey_84, Ricotta_83, Vista_82, Vivaldi_83, Soile_84, PhenghisKhan_83, Apizium_82, Veritas_82, MichaelPhcott_81, BlueHusk_84, DelRivs_81, LasagnaCat_84, Mag7_81, PhrankReynolds_82, Schueller_81, Phergie_83

- Track 9 : Aelin_82
- Track 10 : PinheadLarry_82, Chorkpop_84
- Track 11 : Potter_79, Jiraiya_84, Fringe_87, Windsor_83, Kloppinator_83
- Track 12 : Sigman_83, Pipsqueak_80
- Track 13 : MrPhizzler_82, Khan1_83, KlimbOn_82, MRabcd_83, LeiMonet_85
- Track 14 : Haleema_82, Bishoperium_83, Phunky_81, Olak_82, Altwerkus_81, SirBeauregard_84, TomBombadil_83, Surely_83, Lasso_82, Sophia_81, Chaelin_84, Haimas_81
- Track 15 : Numberten_82, Mcshane_82, Quisquiliae_85, Held_81, ShiVal_81, Banjo_80, Phamished_83, FriarPreacher_81, Tomlarah_84, Craff_85, Squid_82, DaddyDaniels_86, Hetaeria_83, Jiminy_83, Morgushi_81, LemonSlice_83, Piglet_0083, Roy17_81, Vaticameos_80, Cobra_83, Gyarad_0082, Puhltonio_80, Serpentine_0084
- Track 16 : Lego3393_81
- Track 17 : Yoshand_84, FluffyNinja_84
- Track 18 : SDcharge11_82, KLucky39_81, Suffolk_80, Nacho_0086
- Track 19 : Caspiboi_84, TallGrassMM_82, Solosis_81
- Track 20 : Struggle_83
- Track 21 : Duggie_83, CampRoach_84, Rimu_87
- Track 22 : Daffy_82
- Track 23 : Roliet_80
- Track 24 : JacAttac_83, Iridoclysis_82, Dione_81, Katniss_85
- Track 25 : Antonia_82
- Track 26 : Riggan_84
- Track 27 : Soto_80
- Track 28 : Vaishali24_84
- Track 29 : Badfish_84
- Track 30 : Samaymay_83, CamL_83, QueenBeane_83
- Track 31 : Kwadwo_82, Tooj_80, Valjean_82, Megatron_84
- Track 32 : MitKao_83
- Track 33 : Plata_82
- Track 34 : Legolas_84
- Track 35 : Schadenfreude_83
- Track 36 : Lopsy_80
- Track 37 : Megamind20_83
- Track 38 : Mosaic_81, Phareon_81
- Track 39 : Giraffe_83
- Track 40 : SassyCat97_81
- Track 41 : Xavier_83
- Track 42 : Mesh1_84
- Track 43 : Pupper_67, SCentae_66, CherryTomatoes_68

Summary of Final Annotations (See graph section above for start numbers):

The start number called the most often in the published annotations is 21, it was called in 218 of the 262 non-draft genes in the pham.

Genes that call this "Most Annotated" start:

- ABU_82, AbsoluteMadLad_82, Adriana_83, Aelin_82, AltPhacts_81, Altwerkus_81, Anderson_85, Andre_85, AngelCake_80, Apizium_82, Ashraf_84, Badfish_84,

Basato_82, BatteryCK_81, Beaglebox_80, Bishoperium_83, BlackStallion_82, BlueHusk_84, Bluephacebaby_82, Boehler_82, Brilliant_86, Buckeye_83, Burr_83, CamL_83, CampRoach_84, Cannibal_84, Carthage_84, Caspiboi_84, Chaelin_84, Chah_85, Charles1_84, CharlieGBrown_81, CheetO_80, Cher_83, Childish_83, Chipette_82, Chunky_83, Chute_83, Coletti_85, Cornbread_83, Cornobble_81, Cosmolli16_85, Crownjwl_81, Dati_80, DelRivs_81, Derpp_83, Dice_82, Dingo_80, Dione_81, DirtJuice_83, Doddsville_81, DoesntMatter_80, DonSanchon_79, DuchessDung_81, Duggie_83, Durga_85, ElvisPhasley_89, Emiris_85, Eremos_82, Etaye_82, Eugenia_85, Fang_84, Fozzie_81, Frankicide_82, Freya_80, Fringe_87, FugateOSU_83, Gareth_83, GeneCoco_84, Gophee_83, Grand2040_81, Gwennie1_80, Gwilliam_84, HSavage_81, Haimas_81, Haleema_82, Hamish_80, Hartsy_82, HenryJackson_84, HighStump_84, Hocus_81, Horchata_80, ImtiyazSitla_84, Inchworm_84, Inverness_81, Iridessa_87, Iridoclysis_82, JDog_82, JacAttac_83, JakeO_84, JangoPhett_81, Jesabah_82, Jillium_84, Jiraiya_84, Kahve_84, Kailash_81, Katniss_85, Keitherie_86, Khan1_83, Kimbrough_84, KingTut_74, KingVeVeVe_81, KlimbOn_82, Kloppinator_83, Kwadwo_82, Kwksand96_84, Labeouficaum_83, LasagnaCat_84, Lasso_82, LeeLot_82, Legolas_84, LeiMonet_85, Longacauda_84, Lopsy_80, LostAndPhound_82, LuckyMarjie_80, Lulumae_80, Lulwa_80, Lumine_84, MRabcd_83, Mag7_81, Magic8_82, Mana_81, Manad_82, Maru_83, Maskar_84, Matalotodo_82, Mecca_83, Megamind20_83, Megatron_84, Melc17_80, MelsMeow_82, Mesh1_84, Mesmerelda_84, MichaelPhcott_81, Mikota_80, MiniBoss_80, Morty_84, Mosaic_81, MrPhizzler_82, Mulan_82, Murdoc_80, Mutante_84, Nathan_84, Newman_81, Nicole21_84, Nyala_82, Olak_82, Oline_82, Olive_81, OliverWalter_83, Omniscient_84, Oosterbaan_83, Orfeu_82, Orion_82, Orwigg_82, PG1_82, Pacifista_82, Phareon_81, PhatCats2014_83, PhatLouie_85, PhenghisKhan_83, Pherdinand_84, Phergie_83, Phipps_82, Phleuron_81, PhrankReynolds_82, PhrodoBaggins_85, Phunky_81, Pinkman_83, Placalicious_82, Plata_82, Plmatters_81, Podrick_82, Pops_81, Potter_79, ProfessorX_81, QueenBeane_83, RedMaple_83, Ricotta_83, Rimu_87, Riverton_82, Robyn_85, Roliet_80, Roscoe_83, Samaymay_83, SassyCat97_81, Schadenfreude_83, Schueller_81, Scoot17C_84, Scrick_82, Selr12_84, Serendipity_83, Settecandela_194, Sheila_79, SilverBell_84, Simielle_82, SirBeauregard_84, Skippy_84, Slatt_83, Soile_84, Solosis_81, Sophia_81, Spartan300_82, Squiggle_82, Surely_83, Swiphy_87, Swish_84, TailGrassMM_82, Telesworld_81, Thora_82, ThreeOh3D2_85, Thunderbird_83, Timmi_82, TomBombadil_83, Toni_83, TooFast2Furius_85, Tooj_80, True_81, Trypo_84, TyrionL_83, UAch1_84, UncleHowie_80, Usavi_84, Vaishali24_84, Valjean_82, Veritas_82, Virapocalypse_84, Virgeve_81, Vista_82, Vivaldi_83, Vortex_82, Wallhey_84, Waterdiva_84, Weher20_80, Windsor_83, Xavier_83, YouGoGlencoco_83, Zaider_84, Zelda_83, Zonia_84,

Genes that have the "Most Annotated" start but do not call it:

- Antonia_82, Banjo_80, Chorkpop_84, Cobra_83, Craff_85, DaddyDaniels_86, Daffy_82, FluffyNinja_84, FriarPreacher_81, Giraffe_83, Gyarad_0082, Held_81, Hetaeria_83, Jiminy_83, KLucky39_81, Lego3393_81, LemonSlice_83, Mcshane_82, MitKao_83, Morgushi_81, Nacho_0086, Numberten_82, Phamished_83, Piglet_0083, PinheadLarry_82, Pipsqueak_80, Puhltonio_80, Quisquilliae_85, Riggan_84, Roy17_81, SDcharge11_82, Serpentine_0084, ShiVal_81, Sigman_83, Soto_80, Squid_82, Struggle_83, Suffolk_80, Tomlarah_84, Vaticameos_80, Yoshand_84,

Genes that do not have the "Most Annotated" start:

- CherryTomatoes_68, Pupper_67, SCentae_66,

Summary by start number:

Start 18:

- Found in 281 of 285 (98.6%) of genes in pham
- Manual Annotations of this start: 40 of 262
- Called 14.2% of time when present
- Phage (with cluster) where this start called: Antonia_82 (B1), Banjo_80 (B1), Chorkpop_84 (B1), Cobra_83 (B1), Craff_85 (B1), DaddyDaniels_86 (B1), Daffy_82 (B1), FluffyNinja_84 (B1), FriarPreacher_81 (B1), Giraffe_83 (B1), Gyarad_0082 (B1), Held_81 (B1), Hetaeria_83 (B1), Jiminy_83 (B1), KLucky39_81 (B1), Lego3393_81 (B1), LemonSlice_83 (B1), Mcshane_82 (B1), MitKao_83 (B1), Morgushi_81 (B1), Nacho_0086 (B1), Numberten_82 (B1), Phamished_83 (B1), Piglet_0083 (B1), PinheadLarry_82 (B1), Pipsqueak_80 (B1), Puhltonio_80 (B1), Quisquilliae_85 (B1), Roy17_81 (B1), SDcharge11_82 (B1), Serpentine_0084 (B1), ShiVal_81 (B1), Sigman_83 (B1), Soto_80 (B1), Squid_82 (B1), Struggle_83 (B1), Suffolk_80 (B1), Tomlarah_84 (B1), Vaticameos_80 (B1), Yoshand_84 (B1),

Start 19:

- Found in 3 of 285 (1.1%) of genes in pham
- Manual Annotations of this start: 3 of 262
- Called 100.0% of time when present
- Phage (with cluster) where this start called: CherryTomatoes_68 (DO), Pupper_67 (DO), SCentae_66 (DO),

Start 21:

- Found in 282 of 285 (98.9%) of genes in pham
- Manual Annotations of this start: 218 of 262
- Called 85.5% of time when present
- Phage (with cluster) where this start called: ABU_82 (B1), AbsoluteMadLad_82 (B1), Adriana_83 (B1), Aelin_82 (B1), AltPhacts_81 (B1), Altwerkus_81 (B1), Anderson_85 (B1), Andre_85 (B1), AngelCake_80 (B1), Apizium_82 (B1), Ashraf_84 (B1), Badfish_84 (B1), Basato_82 (B1), BatteryCK_81 (B1), Beaglebox_80 (B1), Bishoperium_83 (B1), BlackStallion_82 (B1), BlueHusk_84 (B1), Bluephacebaby_82 (B1), Boehler_82 (B1), Brilliant_86 (B1), Buckeye_83 (B1), Burr_83 (B1), CamL_83 (B1), CampRoach_84 (B1), Cannibal_84 (B1), Carthage_84 (B1), Caspiroi_84 (B1), Chaelin_84 (B1), Chah_85 (B1), Charles1_84 (B1), CharlieGBrown_81 (B1), CheetO_80 (B1), Cher_83 (B1), Childish_83 (B1), Chipette_82 (B1), Chunky_83 (B1), Chute_83 (B1), Coletti_85 (B1), Cornbread_83 (B1), Cornobble_81 (B1), Cosmolli16_85 (B1), Crownjwl_81 (B1), Dati_80 (B1), DelRivs_81 (B1), Derpp_83 (B1), Dice_82 (B1), Dingo_80 (B1), Dione_81 (B1), DirtJuice_83 (B1), Doddsville_81 (B1), DoesntMatter_80 (B1), DonSanchon_79 (B1), DuchessDung_81 (B1), Duggie_83 (B1), Durga_85 (B1), ElvisPhasley_89 (B1), Emiris_85 (B1), Eremos_82 (B1), Etaye_82 (B1), Eugenia_85 (B1), Fang_84 (B1), Fozzie_81 (B1), Frankicide_82 (B1), Freya_80 (B1), Fringe_87 (B1), FugateOSU_83 (B1), Gareth_83 (B1), GeneCoco_84 (B1), Gophee_83 (B1), Grand2040_81 (B1), Gwennie1_80 (B1), Gwilliam_84 (B1), HSavage_81 (B1), Haimas_81 (B1), Haleema_82 (B1), Hamish_80 (B1), Hartsy_82 (B1), HenryJackson_84 (B1), HighStump_84 (B1), Hocus_81 (B1), Horchata_80 (B1), ImtiyazSitla_84 (B1), Inchworm_84 (B1), Inverness_81 (B1), Iridessa_87 (B1), Iridoclysis_82 (B1), JDog_82 (B1), JacAttac_83 (B1), JakeO_84 (B1), JangoPhett_81 (B1), Jesabah_82 (B1), Jillium_84 (B1), Jiraiya_84 (B1), Kahve_84 (B1), Kailash_81 (B1), Katniss_85 (B1), Keitherie_86 (B1), Khan1_83 (B1), Kimbrough_84 (B1), KingTut_74 (B1), KingVeVeVe_81 (B1), KlimbOn_82 (B1), Kloppinator_83 (B1), Kwadwo_82 (B1), Kwksand96_84 (B1), Labeouficaum_83 (B1),

LasagnaCat_84 (B1), Lasso_82 (B1), LeeLot_82 (B1), Legolas_84 (B1), LeiMonet_85 (B1), Longacauda_84 (B1), Lopsy_80 (B1), LostAndPhound_82 (B1), LuckyMarjie_80 (B1), Lulumae_80 (B1), Lulwa_80 (B1), Lumine_84 (B1), MRabcd_83 (B1), Mag7_81 (B1), Magic8_82 (B1), Mana_81 (B1), Manad_82 (B1), Maru_83 (B1), Maskar_84 (B1), Matalotodo_82 (B1), Mecca_83 (B1), Megamind20_83 (B1), Megatron_84 (B1), Melc17_80 (B1), MelsMeow_82 (B1), Mesh1_84 (B1), Mesmerelda_84 (B1), MichaelPhcott_81 (B1), Mikota_80 (B1), MiniBoss_80 (B1), Morty_84 (B1), Mosaic_81 (B1), MrPhizzler_82 (B1), Mulan_82 (B1), Murdoc_80 (B1), Mutante_84 (B1), Nathan_84 (B1), Newman_81 (B1), Nicole21_84 (B1), Nyala_82 (B1), Olak_82 (B1), Oline_82 (B1), Olive_81 (B1), OliverWalter_83 (B1), Omniscient_84 (B1), Oosterbaan_83 (B1), Orfeu_82 (B1), Orion_82 (B1), Orwigg_82 (B1), PG1_82 (B1), Pacifista_82 (B1), Phareon_81 (B1), PhatCats2014_83 (B1), PhatLouie_85 (B1), PhenghisKhan_83 (B1), Pherdinand_84 (B1), Phergie_83 (B1), Phipps_82 (B1), Phleuron_81 (B1), PhrankReynolds_82 (B1), PhrodoBaggins_85 (B1), Phunky_81 (B1), Pinkman_83 (B1), Placalicious_82 (B1), Plata_82 (B1), Plmatters_81 (B1), Podrick_82 (B1), Pops_81 (B1), Potter_79 (B1), ProfessorX_81 (B1), QueenBeane_83 (B1), RedMaple_83 (B1), Ricotta_83 (B1), Rimu_87 (B1), Riverton_82 (B1), Robyn_85 (B1), Roliet_80 (B1), Roscoe_83 (B1), Samaymay_83 (B1), SassyCat97_81 (B1), Schadenfreude_83 (B1), Schueller_81 (B1), Scoot17C_84 (B1), Scrick_82 (B1), Selr12_84 (B1), Serendipity_83 (B1), Settecandela_194 (AA), Sheila_79 (B1), SilverBell_84 (B1), Simielle_82 (B1), SirBeauregard_84 (B1), Skippy_84 (B1), Slatt_83 (B1), Soile_84 (B1), Solosis_81 (B1), Sophia_81 (B1), Spartan300_82 (B1), Squiggle_82 (B1), Surely_83 (B1), Swiphy_87 (B1), Swish_84 (B1), TallGrassMM_82 (B1), Telesworld_81 (B1), Thora_82 (B1), ThreeOh3D2_85 (B1), Thunderbird_83 (B1), Timmi_82 (B1), TomBombadil_83 (B1), Toni_83 (B1), TooFast2Furius_85 (B1), Tooj_80 (B1), True_81 (B1), Trypo_84 (B1), TyrionL_83 (B1), UAch1_84 (B1), UncleHowie_80 (B1), Usavi_84 (B1), Vaishali24_84 (B1), Valjean_82 (B1), Veritas_82 (B1), Virapocalypse_84 (B1), Virgeve_81 (B1), Vista_82 (B1), Vivaldi_83 (B1), Vortex_82 (B1), Wallhey_84 (B1), Waterdiva_84 (B1), Weher20_80 (B1), Windsor_83 (B1), Xavier_83 (B1), YouGoGlencoco_83 (B1), Zaider_84 (B1), Zelda_83 (B1), Zonia_84 (B1),

Start 22:

- Found in 281 of 285 (98.6%) of genes in pham
- Manual Annotations of this start: 1 of 262
- Called 0.4% of time when present
- Phage (with cluster) where this start called: Riggan_84 (B1),

Summary by clusters:

There are 3 clusters represented in this pham: AA, DO, B1,

Info for manual annotations of cluster AA:

- Start number 21 was manually annotated 1 time for cluster AA.

Info for manual annotations of cluster B1:

- Start number 18 was manually annotated 40 times for cluster B1.
- Start number 21 was manually annotated 217 times for cluster B1.
- Start number 22 was manually annotated 1 time for cluster B1.

Info for manual annotations of cluster DO:

- Start number 19 was manually annotated 3 times for cluster DO.

Gene Information:

Gene: ABU_82 Start: 63035, Stop: 62649, Start Num: 21

Candidate Starts for ABU_82:

(Start: 18 @63071 has 40 MA's), (Start: 21 @63035 has 218 MA's), (Start: 22 @62999 has 1 MA's), (23, 62993), (25, 62978), (27, 62927), (30, 62807), (33, 62783), (34, 62774), (36, 62663),

Gene: AbsoluteMadLad_82 Start: 62989, Stop: 62603, Start Num: 21

Candidate Starts for AbsoluteMadLad_82:

(Start: 18 @63025 has 40 MA's), (Start: 21 @62989 has 218 MA's), (Start: 22 @62953 has 1 MA's), (23, 62947), (25, 62932), (27, 62881), (30, 62761), (33, 62737), (34, 62728), (36, 62617),

Gene: Adriana_83 Start: 63551, Stop: 63165, Start Num: 21

Candidate Starts for Adriana_83:

(Start: 18 @63587 has 40 MA's), (Start: 21 @63551 has 218 MA's), (Start: 22 @63515 has 1 MA's), (23, 63509), (25, 63494), (27, 63443), (30, 63323), (33, 63299), (34, 63290), (36, 63179),

Gene: Aelin_82 Start: 62493, Stop: 62107, Start Num: 21

Candidate Starts for Aelin_82:

(17, 62547), (Start: 18 @62529 has 40 MA's), (Start: 21 @62493 has 218 MA's), (Start: 22 @62457 has 1 MA's), (23, 62451), (25, 62436), (30, 62265), (33, 62241), (34, 62232), (36, 62121),

Gene: AltPhacts_81 Start: 62253, Stop: 61867, Start Num: 21

Candidate Starts for AltPhacts_81:

(15, 62364), (16, 62358), (Start: 18 @62289 has 40 MA's), (Start: 21 @62253 has 218 MA's), (Start: 22 @62217 has 1 MA's), (23, 62211), (25, 62196), (30, 62025), (33, 62001), (34, 61992), (36, 61881),

Gene: Altwerkus_81 Start: 62365, Stop: 61979, Start Num: 21

Candidate Starts for Altwerkus_81:

(Start: 18 @62401 has 40 MA's), (Start: 21 @62365 has 218 MA's), (Start: 22 @62329 has 1 MA's), (25, 62308), (27, 62257), (30, 62137), (33, 62113), (34, 62104), (36, 61993),

Gene: Anderson_85 Start: 62911, Stop: 62525, Start Num: 21

Candidate Starts for Anderson_85:

(Start: 18 @62947 has 40 MA's), (Start: 21 @62911 has 218 MA's), (Start: 22 @62875 has 1 MA's), (23, 62869), (25, 62854), (27, 62803), (30, 62683), (33, 62659), (34, 62650), (36, 62539),

Gene: Andre_85 Start: 62933, Stop: 62547, Start Num: 21

Candidate Starts for Andre_85:

(Start: 18 @62969 has 40 MA's), (Start: 21 @62933 has 218 MA's), (Start: 22 @62897 has 1 MA's), (23, 62891), (25, 62876), (27, 62825), (30, 62705), (33, 62681), (34, 62672), (36, 62561),

Gene: AngelCake_80 Start: 62659, Stop: 62273, Start Num: 21

Candidate Starts for AngelCake_80:

(15, 62770), (16, 62764), (Start: 18 @62695 has 40 MA's), (Start: 21 @62659 has 218 MA's), (Start: 22 @62623 has 1 MA's), (25, 62602), (27, 62551), (30, 62431), (33, 62407), (34, 62398), (36, 62287),

Gene: Antonia_82 Start: 62573, Stop: 62151, Start Num: 18

Candidate Starts for Antonia_82:

(17, 62591), (Start: 18 @62573 has 40 MA's), (Start: 21 @62537 has 218 MA's), (Start: 22 @62501 has 1 MA's), (23, 62495), (25, 62480), (30, 62309), (33, 62285), (34, 62276), (36, 62165),

Gene: Apizium_82 Start: 62192, Stop: 61806, Start Num: 21

Candidate Starts for Apizium_82:

(15, 62303), (16, 62297), (Start: 18 @62228 has 40 MA's), (Start: 21 @62192 has 218 MA's), (Start: 22 @62156 has 1 MA's), (25, 62135), (27, 62084), (30, 61964), (33, 61940), (34, 61931), (36, 61820),

Gene: Ashraf_84 Start: 63024, Stop: 62638, Start Num: 21

Candidate Starts for Ashraf_84:

(Start: 18 @63060 has 40 MA's), (Start: 21 @63024 has 218 MA's), (Start: 22 @62988 has 1 MA's), (23, 62982), (25, 62967), (27, 62916), (30, 62796), (33, 62772), (34, 62763), (36, 62652),

Gene: Badfish_84 Start: 63215, Stop: 62829, Start Num: 21

Candidate Starts for Badfish_84:

(Start: 18 @63251 has 40 MA's), (Start: 21 @63215 has 218 MA's), (Start: 22 @63179 has 1 MA's), (25, 63158), (30, 62987), (33, 62963), (34, 62954), (36, 62843),

Gene: Banjo_80 Start: 62517, Stop: 62095, Start Num: 18

Candidate Starts for Banjo_80:

(Start: 18 @62517 has 40 MA's), (Start: 21 @62481 has 218 MA's), (Start: 22 @62445 has 1 MA's), (23, 62439), (25, 62424), (27, 62373), (30, 62253), (33, 62229), (34, 62220), (36, 62109),

Gene: Basato_82 Start: 62945, Stop: 62559, Start Num: 21

Candidate Starts for Basato_82:

(15, 63056), (16, 63050), (Start: 18 @62981 has 40 MA's), (Start: 21 @62945 has 218 MA's), (Start: 22 @62909 has 1 MA's), (23, 62903), (25, 62888), (30, 62717), (33, 62693), (34, 62684), (36, 62573),

Gene: BatteryCK_81 Start: 62471, Stop: 62085, Start Num: 21

Candidate Starts for BatteryCK_81:

(15, 62582), (16, 62576), (Start: 18 @62507 has 40 MA's), (Start: 21 @62471 has 218 MA's), (Start: 22 @62435 has 1 MA's), (25, 62414), (27, 62363), (30, 62243), (33, 62219), (34, 62210), (36, 62099),

Gene: Beaglebox_80 Start: 62603, Stop: 62223, Start Num: 21

Candidate Starts for Beaglebox_80:

(15, 62714), (16, 62708), (Start: 18 @62639 has 40 MA's), (Start: 21 @62603 has 218 MA's), (Start: 22 @62567 has 1 MA's), (23, 62561), (25, 62546), (27, 62495), (30, 62375), (33, 62351), (34, 62342), (36, 62237),

Gene: Bishoperium_83 Start: 63051, Stop: 62665, Start Num: 21

Candidate Starts for Bishoperium_83:

(Start: 18 @63087 has 40 MA's), (Start: 21 @63051 has 218 MA's), (Start: 22 @63015 has 1 MA's), (25, 62994), (27, 62943), (30, 62823), (33, 62799), (34, 62790), (36, 62679),

Gene: BlackStallion_82 Start: 62900, Stop: 62514, Start Num: 21

Candidate Starts for BlackStallion_82:

(15, 63011), (16, 63005), (Start: 18 @62936 has 40 MA's), (Start: 21 @62900 has 218 MA's), (Start: 22 @62864 has 1 MA's), (25, 62843), (27, 62792), (30, 62672), (33, 62648), (36, 62528),

Gene: BlueHusk_84 Start: 62723, Stop: 62337, Start Num: 21

Candidate Starts for BlueHusk_84:

(15, 62834), (16, 62828), (Start: 18 @62759 has 40 MA's), (Start: 21 @62723 has 218 MA's), (Start: 22 @62687 has 1 MA's), (25, 62666), (27, 62615), (30, 62495), (33, 62471), (34, 62462), (36, 62351),

Gene: Bluephacebaby_82 Start: 63084, Stop: 62698, Start Num: 21

Candidate Starts for Bluephacebaby_82:

(Start: 18 @63120 has 40 MA's), (Start: 21 @63084 has 218 MA's), (Start: 22 @63048 has 1 MA's), (23, 63042), (25, 63027), (27, 62976), (30, 62856), (33, 62832), (34, 62823), (36, 62712),

Gene: Boehler_82 Start: 62874, Stop: 62488, Start Num: 21

Candidate Starts for Boehler_82:

(15, 62985), (16, 62979), (Start: 18 @62910 has 40 MA's), (Start: 21 @62874 has 218 MA's), (Start: 22 @62838 has 1 MA's), (23, 62832), (25, 62817), (30, 62646), (33, 62622), (34, 62613), (36, 62502),

Gene: Brilliant_86 Start: 63064, Stop: 62678, Start Num: 21

Candidate Starts for Brilliant_86:

(Start: 18 @63100 has 40 MA's), (Start: 21 @63064 has 218 MA's), (Start: 22 @63028 has 1 MA's), (23, 63022), (25, 63007), (27, 62956), (30, 62836), (33, 62812), (34, 62803), (36, 62692),

Gene: Buckeye_83 Start: 63602, Stop: 63216, Start Num: 21

Candidate Starts for Buckeye_83:

(Start: 18 @63638 has 40 MA's), (Start: 21 @63602 has 218 MA's), (Start: 22 @63566 has 1 MA's), (23, 63560), (25, 63545), (27, 63494), (30, 63374), (33, 63350), (34, 63341), (36, 63230),

Gene: Burr_83 Start: 62536, Stop: 62150, Start Num: 21

Candidate Starts for Burr_83:

(Start: 18 @62572 has 40 MA's), (Start: 21 @62536 has 218 MA's), (Start: 22 @62500 has 1 MA's), (23, 62494), (25, 62479), (27, 62428), (30, 62308), (33, 62284), (34, 62275), (36, 62164),

Gene: CamL_83 Start: 62836, Stop: 62450, Start Num: 21

Candidate Starts for CamL_83:

(17, 62890), (Start: 18 @62872 has 40 MA's), (Start: 21 @62836 has 218 MA's), (Start: 22 @62800 has 1 MA's), (25, 62779), (27, 62728), (30, 62608), (33, 62584), (34, 62575), (36, 62464),

Gene: CampRoach_84 Start: 62932, Stop: 62540, Start Num: 21

Candidate Starts for CampRoach_84:

(Start: 18 @62968 has 40 MA's), (Start: 21 @62932 has 218 MA's), (Start: 22 @62896 has 1 MA's), (23, 62890), (25, 62875), (27, 62824), (30, 62704), (33, 62680), (34, 62671), (36, 62560), (38, 62548),

Gene: Cannibal_84 Start: 62938, Stop: 62552, Start Num: 21

Candidate Starts for Cannibal_84:

(Start: 18 @62974 has 40 MA's), (Start: 21 @62938 has 218 MA's), (Start: 22 @62902 has 1 MA's), (23, 62896), (25, 62881), (27, 62830), (30, 62710), (33, 62686), (34, 62677), (36, 62566),

Gene: Carthage_84 Start: 62605, Stop: 62219, Start Num: 21

Candidate Starts for Carthage_84:

(15, 62716), (16, 62710), (Start: 18 @62641 has 40 MA's), (Start: 21 @62605 has 218 MA's), (Start: 22 @62569 has 1 MA's), (23, 62563), (25, 62548), (30, 62377), (33, 62353), (34, 62344), (36, 62233),

Gene: Caspiboi_84 Start: 62770, Stop: 62384, Start Num: 21

Candidate Starts for Caspiboi_84:

(6, 63097), (7, 63046), (8, 63022), (11, 62995), (12, 62974), (15, 62881), (16, 62875), (Start: 18 @62806 has 40 MA's), (Start: 21 @62770 has 218 MA's), (Start: 22 @62734 has 1 MA's), (23, 62728), (25, 62713), (27, 62662), (30, 62542), (33, 62518), (36, 62398),

Gene: Chaelin_84 Start: 63066, Stop: 62680, Start Num: 21

Candidate Starts for Chaelin_84:

(Start: 18 @63102 has 40 MA's), (Start: 21 @63066 has 218 MA's), (Start: 22 @63030 has 1 MA's), (25, 63009), (27, 62958), (30, 62838), (33, 62814), (34, 62805), (36, 62694),

Gene: Chah_85 Start: 62635, Stop: 62249, Start Num: 21

Candidate Starts for Chah_85:

(Start: 18 @62671 has 40 MA's), (Start: 21 @62635 has 218 MA's), (Start: 22 @62599 has 1 MA's), (23, 62593), (25, 62578), (27, 62527), (30, 62407), (33, 62383), (34, 62374), (36, 62263),

Gene: Charles1_84 Start: 62844, Stop: 62458, Start Num: 21

Candidate Starts for Charles1_84:

(Start: 18 @62880 has 40 MA's), (Start: 21 @62844 has 218 MA's), (Start: 22 @62808 has 1 MA's), (23, 62802), (25, 62787), (27, 62736), (30, 62616), (33, 62592), (34, 62583), (36, 62472),

Gene: CharlieGBrown_81 Start: 62567, Stop: 62181, Start Num: 21

Candidate Starts for CharlieGBrown_81:

(Start: 18 @62603 has 40 MA's), (Start: 21 @62567 has 218 MA's), (Start: 22 @62531 has 1 MA's), (23, 62525), (25, 62510), (27, 62459), (30, 62339), (33, 62315), (34, 62306), (36, 62195),

Gene: CheetO_80 Start: 62940, Stop: 62554, Start Num: 21

Candidate Starts for CheetO_80:

(15, 63051), (16, 63045), (Start: 18 @62976 has 40 MA's), (Start: 21 @62940 has 218 MA's), (Start: 22 @62904 has 1 MA's), (23, 62898), (25, 62883), (30, 62712), (33, 62688), (34, 62679), (36, 62568),

Gene: Cher_83 Start: 63038, Stop: 62652, Start Num: 21

Candidate Starts for Cher_83:

(Start: 18 @63074 has 40 MA's), (Start: 21 @63038 has 218 MA's), (Start: 22 @63002 has 1 MA's), (23, 62996), (25, 62981), (27, 62930), (30, 62810), (33, 62786), (34, 62777), (36, 62666),

Gene: CherryTomatoes_68 Start: 23562, Stop: 23954, Start Num: 19

Candidate Starts for CherryTomatoes_68:

(Start: 19 @23562 has 3 MA's),

Gene: Childish_83 Start: 63229, Stop: 62843, Start Num: 21

Candidate Starts for Childish_83:

(Start: 18 @63265 has 40 MA's), (Start: 21 @63229 has 218 MA's), (Start: 22 @63193 has 1 MA's), (23, 63187), (25, 63172), (27, 63121), (30, 63001), (33, 62977), (34, 62968), (36, 62857),

Gene: Chipette_82 Start: 62765, Stop: 62379, Start Num: 21

Candidate Starts for Chipette_82:

(15, 62876), (16, 62870), (Start: 18 @62801 has 40 MA's), (Start: 21 @62765 has 218 MA's), (Start: 22 @62729 has 1 MA's), (23, 62723), (25, 62708), (30, 62537), (33, 62513), (34, 62504), (36, 62393),

Gene: Chorkpop_84 Start: 62728, Stop: 62306, Start Num: 18

Candidate Starts for Chorkpop_84:

(Start: 18 @62728 has 40 MA's), (Start: 21 @62692 has 218 MA's), (Start: 22 @62656 has 1 MA's), (25, 62635), (27, 62584), (30, 62464), (33, 62440), (34, 62431), (36, 62320),

Gene: Chunky_83 Start: 62536, Stop: 62150, Start Num: 21

Candidate Starts for Chunky_83:

(15, 62647), (16, 62641), (Start: 18 @62572 has 40 MA's), (Start: 21 @62536 has 218 MA's), (Start: 22 @62500 has 1 MA's), (23, 62494), (25, 62479), (30, 62308), (33, 62284), (34, 62275), (36, 62164),

Gene: Chute_83 Start: 63231, Stop: 62845, Start Num: 21

Candidate Starts for Chute_83:

(Start: 18 @63267 has 40 MA's), (Start: 21 @63231 has 218 MA's), (Start: 22 @63195 has 1 MA's), (23, 63189), (25, 63174), (27, 63123), (30, 63003), (33, 62979), (34, 62970), (36, 62859),

Gene: Cobra_83 Start: 63098, Stop: 62676, Start Num: 18

Candidate Starts for Cobra_83:

(Start: 18 @63098 has 40 MA's), (Start: 21 @63062 has 218 MA's), (Start: 22 @63026 has 1 MA's), (23, 63020), (25, 63005), (27, 62954), (30, 62834), (33, 62810), (34, 62801), (36, 62690),

Gene: Coletti_85 Start: 63587, Stop: 63201, Start Num: 21

Candidate Starts for Coletti_85:

(Start: 18 @63623 has 40 MA's), (Start: 21 @63587 has 218 MA's), (Start: 22 @63551 has 1 MA's), (23, 63545), (25, 63530), (27, 63479), (30, 63359), (33, 63335), (34, 63326), (36, 63215),

Gene: Cornbread_83 Start: 62719, Stop: 62333, Start Num: 21

Candidate Starts for Cornbread_83:

(Start: 18 @62755 has 40 MA's), (Start: 21 @62719 has 218 MA's), (Start: 22 @62683 has 1 MA's), (23, 62677), (25, 62662), (27, 62611), (30, 62491), (33, 62467), (34, 62458), (36, 62347),

Gene: Cornobble_81 Start: 62529, Stop: 62143, Start Num: 21

Candidate Starts for Cornobble_81:

(15, 62640), (16, 62634), (Start: 18 @62565 has 40 MA's), (Start: 21 @62529 has 218 MA's), (Start: 22 @62493 has 1 MA's), (25, 62472), (27, 62421), (30, 62301), (33, 62277), (36, 62157),

Gene: Cosmolli16_85 Start: 63407, Stop: 63021, Start Num: 21

Candidate Starts for Cosmolli16_85:

(Start: 18 @63443 has 40 MA's), (Start: 21 @63407 has 218 MA's), (Start: 22 @63371 has 1 MA's), (23, 63365), (25, 63350), (27, 63299), (30, 63179), (33, 63155), (34, 63146), (36, 63035),

Gene: Craff_85 Start: 63486, Stop: 63064, Start Num: 18

Candidate Starts for Craff_85:

(Start: 18 @63486 has 40 MA's), (Start: 21 @63450 has 218 MA's), (Start: 22 @63414 has 1 MA's), (23, 63408), (25, 63393), (27, 63342), (30, 63222), (33, 63198), (34, 63189), (36, 63078),

Gene: Crownjwl_81 Start: 62715, Stop: 62329, Start Num: 21

Candidate Starts for Crownjwl_81:

(15, 62826), (16, 62820), (Start: 18 @62751 has 40 MA's), (Start: 21 @62715 has 218 MA's), (Start: 22 @62679 has 1 MA's), (23, 62673), (25, 62658), (30, 62487), (33, 62463), (34, 62454), (36, 62343),

Gene: DaddyDaniels_86 Start: 63219, Stop: 62797, Start Num: 18

Candidate Starts for DaddyDaniels_86:

(Start: 18 @63219 has 40 MA's), (Start: 21 @63183 has 218 MA's), (Start: 22 @63147 has 1 MA's), (23, 63141), (25, 63126), (27, 63075), (30, 62955), (33, 62931), (34, 62922), (36, 62811),

Gene: Daffy_82 Start: 62713, Stop: 62291, Start Num: 18

Candidate Starts for Daffy_82:

(Start: 18 @62713 has 40 MA's), (Start: 21 @62677 has 218 MA's), (Start: 22 @62641 has 1 MA's), (23, 62635), (25, 62620), (27, 62569), (30, 62449), (33, 62425), (36, 62305),

Gene: Dati_80 Start: 62861, Stop: 62475, Start Num: 21

Candidate Starts for Dati_80:

(Start: 18 @62897 has 40 MA's), (Start: 21 @62861 has 218 MA's), (Start: 22 @62825 has 1 MA's), (23, 62819), (25, 62804), (27, 62753), (30, 62633), (33, 62609), (34, 62600), (36, 62489),

Gene: DelRivs_81 Start: 62489, Stop: 62103, Start Num: 21

Candidate Starts for DelRivs_81:

(15, 62600), (16, 62594), (Start: 18 @62525 has 40 MA's), (Start: 21 @62489 has 218 MA's), (Start: 22 @62453 has 1 MA's), (25, 62432), (27, 62381), (30, 62261), (33, 62237), (34, 62228), (36, 62117),

Gene: Derpp_83 Start: 62600, Stop: 62214, Start Num: 21

Candidate Starts for Derpp_83:

(Start: 18 @62636 has 40 MA's), (Start: 21 @62600 has 218 MA's), (Start: 22 @62564 has 1 MA's), (23, 62558), (25, 62543), (27, 62492), (30, 62372), (33, 62348), (34, 62339), (36, 62228),

Gene: Dice_82 Start: 62522, Stop: 62136, Start Num: 21

Candidate Starts for Dice_82:

(Start: 18 @62558 has 40 MA's), (Start: 21 @62522 has 218 MA's), (Start: 22 @62486 has 1 MA's), (23, 62480), (25, 62465), (27, 62414), (30, 62294), (33, 62270), (34, 62261), (36, 62150),

Gene: Dingo_80 Start: 62242, Stop: 61856, Start Num: 21

Candidate Starts for Dingo_80:

(15, 62353), (16, 62347), (Start: 18 @62278 has 40 MA's), (Start: 21 @62242 has 218 MA's), (Start: 22 @62206 has 1 MA's), (23, 62200), (25, 62185), (30, 62014), (33, 61990), (34, 61981), (36, 61870),

Gene: Dione_81 Start: 62241, Stop: 61855, Start Num: 21

Candidate Starts for Dione_81:

(15, 62352), (16, 62346), (Start: 18 @62277 has 40 MA's), (Start: 21 @62241 has 218 MA's), (Start: 22 @62205 has 1 MA's), (25, 62184), (30, 62013), (33, 61989), (34, 61980), (36, 61869),

Gene: DirtJuice_83 Start: 62981, Stop: 62607, Start Num: 21

Candidate Starts for DirtJuice_83:

(15, 63092), (16, 63086), (Start: 18 @63017 has 40 MA's), (Start: 21 @62981 has 218 MA's), (Start: 22 @62957 has 1 MA's), (23, 62951), (25, 62936), (27, 62885), (30, 62765), (33, 62741), (34, 62732), (36, 62621),

Gene: Doddsville_81 Start: 62682, Stop: 62296, Start Num: 21

Candidate Starts for Doddsville_81:

(Start: 18 @62718 has 40 MA's), (Start: 21 @62682 has 218 MA's), (Start: 22 @62646 has 1 MA's), (23, 62640), (25, 62625), (27, 62574), (30, 62454), (33, 62430), (34, 62421), (36, 62310),

Gene: DoesntMatter_80 Start: 62518, Stop: 62132, Start Num: 21

Candidate Starts for DoesntMatter_80:

(Start: 18 @62554 has 40 MA's), (Start: 21 @62518 has 218 MA's), (Start: 22 @62482 has 1 MA's), (23, 62476), (25, 62461), (27, 62410), (30, 62290), (33, 62266), (34, 62257), (36, 62146),

Gene: DonSanchon_79 Start: 62200, Stop: 61814, Start Num: 21

Candidate Starts for DonSanchon_79:

(Start: 18 @62236 has 40 MA's), (Start: 21 @62200 has 218 MA's), (Start: 22 @62164 has 1 MA's), (23, 62158), (25, 62143), (27, 62092), (30, 61972), (33, 61948), (34, 61939), (36, 61828),

Gene: DuchessDung_81 Start: 62198, Stop: 61812, Start Num: 21

Candidate Starts for DuchessDung_81:

(Start: 18 @62234 has 40 MA's), (Start: 21 @62198 has 218 MA's), (Start: 22 @62162 has 1 MA's), (23, 62156), (25, 62141), (27, 62090), (30, 61970), (33, 61946), (34, 61937), (36, 61826),

Gene: Duggie_83 Start: 62824, Stop: 62432, Start Num: 21

Candidate Starts for Duggie_83:

(Start: 18 @62860 has 40 MA's), (Start: 21 @62824 has 218 MA's), (Start: 22 @62788 has 1 MA's), (23, 62782), (25, 62767), (27, 62716), (30, 62596), (33, 62572), (34, 62563), (36, 62452), (38, 62440),

Gene: Durga_85 Start: 63305, Stop: 62919, Start Num: 21

Candidate Starts for Durga_85:

(15, 63416), (16, 63410), (Start: 18 @63341 has 40 MA's), (Start: 21 @63305 has 218 MA's), (Start: 22 @63269 has 1 MA's), (25, 63248), (27, 63197), (30, 63077), (33, 63053), (34, 63044), (36, 62933),

Gene: ElvisPhasley_89 Start: 63848, Stop: 63462, Start Num: 21

Candidate Starts for ElvisPhasley_89:

(13, 64004), (Start: 18 @63884 has 40 MA's), (Start: 21 @63848 has 218 MA's), (Start: 22 @63812 has 1 MA's), (23, 63806), (25, 63791), (27, 63740), (30, 63620), (33, 63596), (34, 63587), (36, 63476),

Gene: Emiris_85 Start: 63212, Stop: 62826, Start Num: 21

Candidate Starts for Emiris_85:

(Start: 18 @63248 has 40 MA's), (Start: 21 @63212 has 218 MA's), (Start: 22 @63176 has 1 MA's), (23, 63170), (25, 63155), (27, 63104), (30, 62984), (33, 62960), (34, 62951), (36, 62840),

Gene: Eremos_82 Start: 62903, Stop: 62517, Start Num: 21

Candidate Starts for Eremos_82:

(15, 63014), (16, 63008), (Start: 18 @62939 has 40 MA's), (Start: 21 @62903 has 218 MA's), (Start: 22 @62867 has 1 MA's), (23, 62861), (25, 62846), (30, 62675), (33, 62651), (34, 62642), (36, 62531),

Gene: Etaye_82 Start: 63390, Stop: 63004, Start Num: 21

Candidate Starts for Etaye_82:

(Start: 18 @63426 has 40 MA's), (Start: 21 @63390 has 218 MA's), (Start: 22 @63354 has 1 MA's), (23, 63348), (25, 63333), (27, 63282), (30, 63162), (33, 63138), (34, 63129), (36, 63018),

Gene: Eugenia_85 Start: 63325, Stop: 62939, Start Num: 21

Candidate Starts for Eugenia_85:

(13, 63481), (Start: 18 @63361 has 40 MA's), (Start: 21 @63325 has 218 MA's), (Start: 22 @63289 has 1 MA's), (23, 63283), (25, 63268), (27, 63217), (30, 63097), (33, 63073), (34, 63064), (36, 62953),

Gene: Fang_84 Start: 63033, Stop: 62647, Start Num: 21

Candidate Starts for Fang_84:

(Start: 18 @63069 has 40 MA's), (Start: 21 @63033 has 218 MA's), (Start: 22 @62997 has 1 MA's), (23, 62991), (25, 62976), (27, 62925), (30, 62805), (33, 62781), (34, 62772), (36, 62661),

Gene: FluffyNinja_84 Start: 62938, Stop: 62516, Start Num: 18

Candidate Starts for FluffyNinja_84:

(15, 63013), (16, 63007), (Start: 18 @62938 has 40 MA's), (Start: 21 @62902 has 218 MA's), (Start: 22 @62866 has 1 MA's), (25, 62845), (27, 62794), (30, 62674), (33, 62650), (36, 62530),

Gene: Fozzie_81 Start: 63229, Stop: 62843, Start Num: 21

Candidate Starts for Fozzie_81:

(Start: 18 @63265 has 40 MA's), (Start: 21 @63229 has 218 MA's), (Start: 22 @63193 has 1 MA's), (23, 63187), (25, 63172), (27, 63121), (30, 63001), (33, 62977), (34, 62968), (36, 62857),

Gene: Frankicide_82 Start: 62728, Stop: 62342, Start Num: 21

Candidate Starts for Frankicide_82:

(Start: 18 @62764 has 40 MA's), (Start: 21 @62728 has 218 MA's), (Start: 22 @62692 has 1 MA's), (23, 62686), (25, 62671), (27, 62620), (30, 62500), (33, 62476), (34, 62467), (36, 62356),

Gene: Freya_80 Start: 62220, Stop: 61834, Start Num: 21

Candidate Starts for Freya_80:

(Start: 18 @62256 has 40 MA's), (Start: 21 @62220 has 218 MA's), (Start: 22 @62184 has 1 MA's), (23, 62178), (25, 62163), (27, 62112), (30, 61992), (33, 61968), (34, 61959), (36, 61848),

Gene: FriarPreacher_81 Start: 62637, Stop: 62215, Start Num: 18

Candidate Starts for FriarPreacher_81:

(Start: 18 @62637 has 40 MA's), (Start: 21 @62601 has 218 MA's), (Start: 22 @62565 has 1 MA's), (23, 62559), (25, 62544), (27, 62493), (30, 62373), (33, 62349), (34, 62340), (36, 62229),

Gene: Fringe_87 Start: 63378, Stop: 62992, Start Num: 21

Candidate Starts for Fringe_87:

(Start: 18 @63414 has 40 MA's), (Start: 21 @63378 has 218 MA's), (Start: 22 @63342 has 1 MA's), (23, 63336), (25, 63321), (27, 63270), (30, 63150), (33, 63126), (36, 63006),

Gene: FugateOSU_83 Start: 63662, Stop: 63276, Start Num: 21

Candidate Starts for FugateOSU_83:

(Start: 18 @63698 has 40 MA's), (Start: 21 @63662 has 218 MA's), (Start: 22 @63626 has 1 MA's), (23, 63620), (25, 63605), (27, 63554), (30, 63434), (33, 63410), (34, 63401), (36, 63290),

Gene: Gareth_83 Start: 63050, Stop: 62664, Start Num: 21

Candidate Starts for Gareth_83:

(Start: 18 @63086 has 40 MA's), (Start: 21 @63050 has 218 MA's), (Start: 22 @63014 has 1 MA's), (23, 63008), (25, 62993), (27, 62942), (30, 62822), (33, 62798), (34, 62789), (36, 62678),

Gene: GeneCoco_84 Start: 63230, Stop: 62844, Start Num: 21

Candidate Starts for GeneCoco_84:

(Start: 18 @63266 has 40 MA's), (Start: 21 @63230 has 218 MA's), (Start: 22 @63194 has 1 MA's), (23, 63188), (25, 63173), (27, 63122), (30, 63002), (33, 62978), (34, 62969), (36, 62858),

Gene: Giraffe_83 Start: 63091, Stop: 62669, Start Num: 18

Candidate Starts for Giraffe_83:

(17, 63109), (Start: 18 @63091 has 40 MA's), (Start: 21 @63055 has 218 MA's), (Start: 22 @63019 has 1 MA's), (25, 62998), (27, 62947), (30, 62827), (33, 62803), (34, 62794), (36, 62683),

Gene: Gophee_83 Start: 63041, Stop: 62655, Start Num: 21

Candidate Starts for Gophee_83:

(Start: 18 @63077 has 40 MA's), (Start: 21 @63041 has 218 MA's), (Start: 22 @63005 has 1 MA's), (23, 62999), (25, 62984), (27, 62933), (30, 62813), (33, 62789), (34, 62780), (36, 62669),

Gene: Grand2040_81 Start: 63019, Stop: 62633, Start Num: 21

Candidate Starts for Grand2040_81:

(Start: 18 @63055 has 40 MA's), (Start: 21 @63019 has 218 MA's), (Start: 22 @62983 has 1 MA's), (23, 62977), (25, 62962), (27, 62911), (30, 62791), (33, 62767), (34, 62758), (36, 62647),

Gene: Gwennie1_80 Start: 62864, Stop: 62478, Start Num: 21

Candidate Starts for Gwennie1_80:

(15, 62975), (16, 62969), (Start: 18 @62900 has 40 MA's), (Start: 21 @62864 has 218 MA's), (Start: 22 @62828 has 1 MA's), (23, 62822), (25, 62807), (27, 62756), (30, 62636), (33, 62612), (34, 62603), (36, 62492),

Gene: Gwilliam_84 Start: 63584, Stop: 63198, Start Num: 21

Candidate Starts for Gwilliam_84:

(15, 63695), (16, 63689), (Start: 18 @63620 has 40 MA's), (Start: 21 @63584 has 218 MA's), (Start: 22 @63548 has 1 MA's), (23, 63542), (25, 63527), (30, 63356), (33, 63332), (34, 63323), (36, 63212),

Gene: Gyarad_0082 Start: 62575, Stop: 62153, Start Num: 18

Candidate Starts for Gyarad_0082:

(Start: 18 @62575 has 40 MA's), (Start: 21 @62539 has 218 MA's), (Start: 22 @62503 has 1 MA's), (23, 62497), (25, 62482), (27, 62431), (30, 62311), (33, 62287), (34, 62278), (36, 62167),

Gene: HSavage_81 Start: 62556, Stop: 62170, Start Num: 21

Candidate Starts for HSavage_81:

(Start: 18 @62592 has 40 MA's), (Start: 21 @62556 has 218 MA's), (Start: 22 @62520 has 1 MA's), (23, 62514), (25, 62499), (27, 62448), (30, 62328), (33, 62304), (34, 62295), (36, 62184),

Gene: Haimas_81 Start: 62481, Stop: 62095, Start Num: 21

Candidate Starts for Haimas_81:

(Start: 18 @62517 has 40 MA's), (Start: 21 @62481 has 218 MA's), (Start: 22 @62445 has 1 MA's), (25, 62424), (27, 62373), (30, 62253), (33, 62229), (34, 62220), (36, 62109),

Gene: Haleema_82 Start: 62601, Stop: 62215, Start Num: 21

Candidate Starts for Haleema_82:

(Start: 18 @62637 has 40 MA's), (Start: 21 @62601 has 218 MA's), (Start: 22 @62565 has 1 MA's), (25, 62544), (27, 62493), (30, 62373), (33, 62349), (34, 62340), (36, 62229),

Gene: Hamish_80 Start: 62769, Stop: 62383, Start Num: 21

Candidate Starts for Hamish_80:

(15, 62880), (16, 62874), (Start: 18 @62805 has 40 MA's), (Start: 21 @62769 has 218 MA's), (Start: 22 @62733 has 1 MA's), (23, 62727), (25, 62712), (30, 62541), (33, 62517), (34, 62508), (36, 62397),

Gene: Hartsy_82 Start: 62717, Stop: 62331, Start Num: 21

Candidate Starts for Hartsy_82:

(15, 62828), (16, 62822), (Start: 18 @62753 has 40 MA's), (Start: 21 @62717 has 218 MA's), (Start: 22 @62681 has 1 MA's), (25, 62660), (27, 62609), (30, 62489), (33, 62465), (34, 62456), (36, 62345),

Gene: Held_81 Start: 62535, Stop: 62113, Start Num: 18

Candidate Starts for Held_81:

(Start: 18 @62535 has 40 MA's), (Start: 21 @62499 has 218 MA's), (Start: 22 @62463 has 1 MA's), (23, 62457), (25, 62442), (27, 62391), (30, 62271), (33, 62247), (34, 62238), (36, 62127),

Gene: HenryJackson_84 Start: 63218, Stop: 62832, Start Num: 21

Candidate Starts for HenryJackson_84:

(Start: 18 @63254 has 40 MA's), (Start: 21 @63218 has 218 MA's), (Start: 22 @63182 has 1 MA's), (23, 63176), (25, 63161), (27, 63110), (30, 62990), (33, 62966), (34, 62957), (36, 62846),

Gene: Hetaeria_83 Start: 62903, Stop: 62481, Start Num: 18

Candidate Starts for Hetaeria_83:

(Start: 18 @62903 has 40 MA's), (Start: 21 @62867 has 218 MA's), (Start: 22 @62831 has 1 MA's), (23, 62825), (25, 62810), (27, 62759), (30, 62639), (33, 62615), (34, 62606), (36, 62495),

Gene: HighStump_84 Start: 63005, Stop: 62619, Start Num: 21

Candidate Starts for HighStump_84:

(Start: 18 @63041 has 40 MA's), (Start: 21 @63005 has 218 MA's), (Start: 22 @62969 has 1 MA's), (23, 62963), (25, 62948), (27, 62897), (30, 62777), (33, 62753), (34, 62744), (36, 62633),

Gene: Hocus_81 Start: 62519, Stop: 62133, Start Num: 21

Candidate Starts for Hocus_81:

(Start: 18 @62555 has 40 MA's), (Start: 21 @62519 has 218 MA's), (Start: 22 @62483 has 1 MA's), (23, 62477), (25, 62462), (27, 62411), (30, 62291), (33, 62267), (34, 62258), (36, 62147),

Gene: Horchata_80 Start: 62695, Stop: 62309, Start Num: 21

Candidate Starts for Horchata_80:

(15, 62806), (16, 62800), (Start: 18 @62731 has 40 MA's), (Start: 21 @62695 has 218 MA's), (Start: 22 @62659 has 1 MA's), (23, 62653), (25, 62638), (30, 62467), (33, 62443), (34, 62434), (36, 62323),

Gene: ImtiyazSitla_84 Start: 63024, Stop: 62638, Start Num: 21

Candidate Starts for ImtiyazSitla_84:

(Start: 18 @63060 has 40 MA's), (Start: 21 @63024 has 218 MA's), (Start: 22 @62988 has 1 MA's), (23, 62982), (25, 62967), (27, 62916), (30, 62796), (33, 62772), (34, 62763), (36, 62652),

Gene: Inchworm_84 Start: 62891, Stop: 62505, Start Num: 21

Candidate Starts for Inchworm_84:

(15, 63002), (16, 62996), (Start: 18 @62927 has 40 MA's), (Start: 21 @62891 has 218 MA's), (Start: 22 @62855 has 1 MA's), (25, 62834), (27, 62783), (30, 62663), (33, 62639), (34, 62630), (36, 62519),

Gene: Inverness_81 Start: 62692, Stop: 62306, Start Num: 21

Candidate Starts for Inverness_81:

(15, 62803), (16, 62797), (Start: 18 @62728 has 40 MA's), (Start: 21 @62692 has 218 MA's), (Start: 22 @62656 has 1 MA's), (23, 62650), (25, 62635), (30, 62464), (33, 62440), (34, 62431), (36, 62320),

Gene: Iridessa_87 Start: 62616, Stop: 62230, Start Num: 21

Candidate Starts for Iridessa_87:

(15, 62727), (16, 62721), (Start: 18 @62652 has 40 MA's), (Start: 21 @62616 has 218 MA's), (Start: 22 @62580 has 1 MA's), (23, 62574), (25, 62559), (30, 62388), (33, 62364), (34, 62355), (36, 62244),

Gene: Iridoclysis_82 Start: 62782, Stop: 62396, Start Num: 21

Candidate Starts for Iridoclysis_82:

(15, 62893), (16, 62887), (Start: 18 @62818 has 40 MA's), (Start: 21 @62782 has 218 MA's), (Start: 22 @62746 has 1 MA's), (25, 62725), (30, 62554), (33, 62530), (34, 62521), (36, 62410),

Gene: JDog_82 Start: 63053, Stop: 62667, Start Num: 21

Candidate Starts for JDog_82:

(Start: 18 @63089 has 40 MA's), (Start: 21 @63053 has 218 MA's), (Start: 22 @63017 has 1 MA's), (23, 63011), (25, 62996), (27, 62945), (30, 62825), (33, 62801), (34, 62792), (36, 62681),

Gene: JacAttac_83 Start: 62496, Stop: 62110, Start Num: 21

Candidate Starts for JacAttac_83:

(15, 62607), (16, 62601), (Start: 18 @62532 has 40 MA's), (Start: 21 @62496 has 218 MA's), (Start: 22 @62460 has 1 MA's), (25, 62439), (30, 62268), (33, 62244), (34, 62235), (36, 62124),

Gene: JakeO_84 Start: 62781, Stop: 62395, Start Num: 21

Candidate Starts for JakeO_84:

(Start: 18 @62817 has 40 MA's), (Start: 21 @62781 has 218 MA's), (Start: 22 @62745 has 1 MA's), (23, 62739), (25, 62724), (27, 62673), (30, 62553), (33, 62529), (34, 62520), (36, 62409),

Gene: JangoPhett_81 Start: 62857, Stop: 62471, Start Num: 21

Candidate Starts for JangoPhett_81:

(Start: 18 @62893 has 40 MA's), (Start: 21 @62857 has 218 MA's), (Start: 22 @62821 has 1 MA's), (23, 62815), (25, 62800), (27, 62749), (30, 62629), (33, 62605), (34, 62596), (36, 62485),

Gene: Jesabah_82 Start: 63620, Stop: 63234, Start Num: 21

Candidate Starts for Jesabah_82:

(Start: 18 @63656 has 40 MA's), (Start: 21 @63620 has 218 MA's), (Start: 22 @63584 has 1 MA's), (23, 63578), (25, 63563), (27, 63512), (30, 63392), (33, 63368), (34, 63359), (36, 63248),

Gene: Jillium_84 Start: 63213, Stop: 62827, Start Num: 21

Candidate Starts for Jillium_84:

(Start: 18 @63249 has 40 MA's), (Start: 21 @63213 has 218 MA's), (Start: 22 @63177 has 1 MA's), (23, 63171), (25, 63156), (27, 63105), (30, 62985), (33, 62961), (34, 62952), (36, 62841),

Gene: Jiminy_83 Start: 62753, Stop: 62331, Start Num: 18

Candidate Starts for Jiminy_83:

(Start: 18 @62753 has 40 MA's), (Start: 21 @62717 has 218 MA's), (Start: 22 @62681 has 1 MA's), (23, 62675), (25, 62660), (27, 62609), (30, 62489), (33, 62465), (34, 62456), (36, 62345),

Gene: Jiraiya_84 Start: 62801, Stop: 62415, Start Num: 21

Candidate Starts for Jiraiya_84:

(Start: 18 @62837 has 40 MA's), (Start: 21 @62801 has 218 MA's), (Start: 22 @62765 has 1 MA's), (23, 62759), (25, 62744), (27, 62693), (30, 62573), (33, 62549), (36, 62429),

Gene: KLucky39_81 Start: 62611, Stop: 62189, Start Num: 18

Candidate Starts for KLucky39_81:

(15, 62686), (16, 62680), (Start: 18 @62611 has 40 MA's), (Start: 21 @62575 has 218 MA's), (Start: 22 @62539 has 1 MA's), (23, 62533), (25, 62518), (30, 62347), (33, 62323), (34, 62314), (36, 62203),

Gene: Kahve_84 Start: 63216, Stop: 62830, Start Num: 21

Candidate Starts for Kahve_84:

(Start: 18 @63252 has 40 MA's), (Start: 21 @63216 has 218 MA's), (Start: 22 @63180 has 1 MA's), (23, 63174), (25, 63159), (27, 63108), (30, 62988), (33, 62964), (34, 62955), (36, 62844),

Gene: Kailash_81 Start: 62915, Stop: 62529, Start Num: 21

Candidate Starts for Kailash_81:

(15, 63026), (16, 63020), (Start: 18 @62951 has 40 MA's), (Start: 21 @62915 has 218 MA's), (Start: 22 @62879 has 1 MA's), (25, 62858), (27, 62807), (30, 62687), (33, 62663), (34, 62654), (36, 62543),

Gene: Katniss_85 Start: 62631, Stop: 62245, Start Num: 21

Candidate Starts for Katniss_85:

(15, 62742), (16, 62736), (Start: 18 @62667 has 40 MA's), (Start: 21 @62631 has 218 MA's), (Start: 22 @62595 has 1 MA's), (25, 62574), (30, 62403), (33, 62379), (34, 62370), (36, 62259),

Gene: Keitherie_86 Start: 63274, Stop: 62888, Start Num: 21

Candidate Starts for Keitherie_86:

(Start: 18 @63310 has 40 MA's), (Start: 21 @63274 has 218 MA's), (Start: 22 @63238 has 1 MA's), (23, 63232), (25, 63217), (27, 63166), (30, 63046), (33, 63022), (34, 63013), (36, 62902),

Gene: Khan1_83 Start: 62995, Stop: 62609, Start Num: 21

Candidate Starts for Khan1_83:

(Start: 18 @63031 has 40 MA's), (Start: 21 @62995 has 218 MA's), (Start: 22 @62959 has 1 MA's), (25, 62938), (27, 62887), (30, 62767), (33, 62743), (36, 62623),

Gene: Kimbrough_84 Start: 63095, Stop: 62709, Start Num: 21

Candidate Starts for Kimbrough_84:

(Start: 18 @63131 has 40 MA's), (Start: 21 @63095 has 218 MA's), (Start: 22 @63059 has 1 MA's), (23, 63053), (25, 63038), (27, 62987), (30, 62867), (33, 62843), (34, 62834), (36, 62723),

Gene: KingTut_74 Start: 59255, Stop: 58869, Start Num: 21

Candidate Starts for KingTut_74:

(Start: 18 @59291 has 40 MA's), (Start: 21 @59255 has 218 MA's), (Start: 22 @59219 has 1 MA's), (23, 59213), (25, 59198), (27, 59147), (30, 59027), (33, 59003), (34, 58994), (36, 58883),

Gene: KingVeVeVe_81 Start: 62229, Stop: 61843, Start Num: 21

Candidate Starts for KingVeVeVe_81:

(15, 62340), (16, 62334), (Start: 18 @62265 has 40 MA's), (Start: 21 @62229 has 218 MA's), (Start: 22 @62193 has 1 MA's), (23, 62187), (25, 62172), (30, 62001), (33, 61977), (34, 61968), (36, 61857),

Gene: KlimbOn_82 Start: 62535, Stop: 62149, Start Num: 21

Candidate Starts for KlimbOn_82:

(Start: 18 @62571 has 40 MA's), (Start: 21 @62535 has 218 MA's), (Start: 22 @62499 has 1 MA's), (25, 62478), (27, 62427), (30, 62307), (33, 62283), (36, 62163),

Gene: Kloppinator_83 Start: 62666, Stop: 62280, Start Num: 21

Candidate Starts for Kloppinator_83:

(Start: 18 @62702 has 40 MA's), (Start: 21 @62666 has 218 MA's), (Start: 22 @62630 has 1 MA's), (23, 62624), (25, 62609), (27, 62558), (30, 62438), (33, 62414), (36, 62294),

Gene: Kwadwo_82 Start: 62521, Stop: 62135, Start Num: 21

Candidate Starts for Kwadwo_82:

(17, 62575), (Start: 18 @62557 has 40 MA's), (Start: 21 @62521 has 218 MA's), (Start: 22 @62485 has 1 MA's), (25, 62464), (30, 62293), (33, 62269), (34, 62260), (36, 62149),

Gene: Kwksand96_84 Start: 62787, Stop: 62401, Start Num: 21

Candidate Starts for Kwksand96_84:

(Start: 18 @62823 has 40 MA's), (Start: 21 @62787 has 218 MA's), (Start: 22 @62751 has 1 MA's), (23, 62745), (25, 62730), (27, 62679), (30, 62559), (33, 62535), (34, 62526), (36, 62415),

Gene: Labeouficaum_83 Start: 62600, Stop: 62214, Start Num: 21

Candidate Starts for Labeouficaum_83:

(Start: 18 @62636 has 40 MA's), (Start: 21 @62600 has 218 MA's), (Start: 22 @62564 has 1 MA's), (23, 62558), (25, 62543), (27, 62492), (30, 62372), (33, 62348), (34, 62339), (36, 62228),

Gene: LasagnaCat_84 Start: 62901, Stop: 62515, Start Num: 21

Candidate Starts for LasagnaCat_84:

(15, 63012), (16, 63006), (Start: 18 @62937 has 40 MA's), (Start: 21 @62901 has 218 MA's), (Start: 22 @62865 has 1 MA's), (25, 62844), (27, 62793), (30, 62673), (33, 62649), (34, 62640), (36, 62529),

Gene: Lasso_82 Start: 62762, Stop: 62376, Start Num: 21

Candidate Starts for Lasso_82:

(Start: 18 @62798 has 40 MA's), (Start: 21 @62762 has 218 MA's), (Start: 22 @62726 has 1 MA's), (25, 62705), (27, 62654), (30, 62534), (33, 62510), (34, 62501), (36, 62390),

Gene: LeeLot_82 Start: 63105, Stop: 62719, Start Num: 21

Candidate Starts for LeeLot_82:

(Start: 18 @63141 has 40 MA's), (Start: 21 @63105 has 218 MA's), (Start: 22 @63069 has 1 MA's), (23, 63063), (25, 63048), (27, 62997), (30, 62877), (33, 62853), (34, 62844), (36, 62733),

Gene: Lego3393_81 Start: 63258, Stop: 62836, Start Num: 18

Candidate Starts for Lego3393_81:

(15, 63333), (16, 63327), (Start: 18 @63258 has 40 MA's), (Start: 21 @63222 has 218 MA's), (Start: 22 @63186 has 1 MA's), (25, 63165), (27, 63114), (30, 62994), (33, 62970), (34, 62961), (36, 62850),

Gene: Legolas_84 Start: 62849, Stop: 62463, Start Num: 21

Candidate Starts for Legolas_84:

(5, 63182), (9, 63095), (10, 63092), (Start: 18 @62885 has 40 MA's), (Start: 21 @62849 has 218 MA's), (Start: 22 @62813 has 1 MA's), (23, 62807), (25, 62792), (27, 62741), (30, 62621), (33, 62597), (34, 62588), (36, 62477),

Gene: LeiMonet_85 Start: 62983, Stop: 62597, Start Num: 21

Candidate Starts for LeiMonet_85:

(Start: 18 @63019 has 40 MA's), (Start: 21 @62983 has 218 MA's), (Start: 22 @62947 has 1 MA's), (25, 62926), (27, 62875), (30, 62755), (33, 62731), (36, 62611),

Gene: LemonSlice_83 Start: 62544, Stop: 62122, Start Num: 18

Candidate Starts for LemonSlice_83:

(Start: 18 @62544 has 40 MA's), (Start: 21 @62508 has 218 MA's), (Start: 22 @62472 has 1 MA's), (23, 62466), (25, 62451), (27, 62400), (30, 62280), (33, 62256), (34, 62247), (36, 62136),

Gene: Longacauda_84 Start: 63001, Stop: 62615, Start Num: 21

Candidate Starts for Longacauda_84:

(15, 63112), (16, 63106), (Start: 18 @63037 has 40 MA's), (Start: 21 @63001 has 218 MA's), (Start: 22 @62965 has 1 MA's), (25, 62944), (27, 62893), (30, 62773), (33, 62749), (34, 62740), (36, 62629),

Gene: Lopsy_80 Start: 62188, Stop: 61802, Start Num: 21

Candidate Starts for Lopsy_80:

(7, 62464), (8, 62440), (11, 62413), (12, 62392), (15, 62299), (16, 62293), (Start: 18 @62224 has 40 MA's), (Start: 21 @62188 has 218 MA's), (Start: 22 @62152 has 1 MA's), (23, 62146), (25, 62131), (30, 61960), (33, 61936), (34, 61927), (36, 61816),

Gene: LostAndPhound_82 Start: 63051, Stop: 62665, Start Num: 21

Candidate Starts for LostAndPhound_82:

(Start: 18 @63087 has 40 MA's), (Start: 21 @63051 has 218 MA's), (Start: 22 @63015 has 1 MA's), (23, 63009), (25, 62994), (27, 62943), (30, 62823), (33, 62799), (34, 62790), (36, 62679),

Gene: LuckyMarjie_80 Start: 62260, Stop: 61874, Start Num: 21

Candidate Starts for LuckyMarjie_80:

(Start: 18 @62296 has 40 MA's), (Start: 21 @62260 has 218 MA's), (Start: 22 @62224 has 1 MA's), (23, 62218), (25, 62203), (27, 62152), (30, 62032), (33, 62008), (34, 61999), (36, 61888),

Gene: Lulumae_80 Start: 62241, Stop: 61855, Start Num: 21

Candidate Starts for Lulumae_80:

(Start: 18 @62277 has 40 MA's), (Start: 21 @62241 has 218 MA's), (Start: 22 @62205 has 1 MA's), (23, 62199), (25, 62184), (27, 62133), (30, 62013), (33, 61989), (34, 61980), (36, 61869),

Gene: Lulwa_80 Start: 61873, Stop: 61487, Start Num: 21

Candidate Starts for Lulwa_80:

(15, 61984), (16, 61978), (Start: 18 @61909 has 40 MA's), (Start: 21 @61873 has 218 MA's), (Start: 22 @61837 has 1 MA's), (23, 61831), (25, 61816), (27, 61765), (30, 61645), (33, 61621), (34, 61612), (36, 61501),

Gene: Lumine_84 Start: 62699, Stop: 62313, Start Num: 21

Candidate Starts for Lumine_84:

(Start: 18 @62735 has 40 MA's), (Start: 21 @62699 has 218 MA's), (Start: 22 @62663 has 1 MA's), (23, 62657), (25, 62642), (27, 62591), (30, 62471), (33, 62447), (34, 62438), (36, 62327),

Gene: MRabcd_83 Start: 62976, Stop: 62590, Start Num: 21

Candidate Starts for MRabcd_83:

(Start: 18 @63012 has 40 MA's), (Start: 21 @62976 has 218 MA's), (Start: 22 @62940 has 1 MA's), (25, 62919), (27, 62868), (30, 62748), (33, 62724), (36, 62604),

Gene: Mag7_81 Start: 62459, Stop: 62073, Start Num: 21

Candidate Starts for Mag7_81:

(15, 62570), (16, 62564), (Start: 18 @62495 has 40 MA's), (Start: 21 @62459 has 218 MA's), (Start: 22 @62423 has 1 MA's), (25, 62402), (27, 62351), (30, 62231), (33, 62207), (34, 62198), (36, 62087),

Gene: Magic8_82 Start: 62828, Stop: 62442, Start Num: 21

Candidate Starts for Magic8_82:

(Start: 18 @62864 has 40 MA's), (Start: 21 @62828 has 218 MA's), (Start: 22 @62792 has 1 MA's), (23, 62786), (25, 62771), (27, 62720), (30, 62600), (33, 62576), (34, 62567), (36, 62456),

Gene: Mana_81 Start: 62664, Stop: 62278, Start Num: 21

Candidate Starts for Mana_81:

(Start: 18 @62700 has 40 MA's), (Start: 21 @62664 has 218 MA's), (Start: 22 @62628 has 1 MA's), (23, 62622), (25, 62607), (27, 62556), (30, 62436), (33, 62412), (34, 62403), (36, 62292),

Gene: Manad_82 Start: 62773, Stop: 62387, Start Num: 21

Candidate Starts for Manad_82:

(15, 62884), (16, 62878), (Start: 18 @62809 has 40 MA's), (Start: 21 @62773 has 218 MA's), (Start: 22 @62737 has 1 MA's), (23, 62731), (25, 62716), (30, 62545), (33, 62521), (34, 62512), (36, 62401),

Gene: Maru_83 Start: 63112, Stop: 62726, Start Num: 21

Candidate Starts for Maru_83:

(Start: 18 @63148 has 40 MA's), (Start: 21 @63112 has 218 MA's), (Start: 22 @63076 has 1 MA's), (23, 63070), (25, 63055), (27, 63004), (30, 62884), (33, 62860), (34, 62851), (36, 62740),

Gene: Maskar_84 Start: 63024, Stop: 62638, Start Num: 21

Candidate Starts for Maskar_84:

(Start: 18 @63060 has 40 MA's), (Start: 21 @63024 has 218 MA's), (Start: 22 @62988 has 1 MA's), (23, 62982), (25, 62967), (27, 62916), (30, 62796), (33, 62772), (34, 62763), (36, 62652),

Gene: Matalotodo_82 Start: 63508, Stop: 63122, Start Num: 21

Candidate Starts for Matalotodo_82:

(Start: 18 @63544 has 40 MA's), (Start: 21 @63508 has 218 MA's), (Start: 22 @63472 has 1 MA's), (23, 63466), (25, 63451), (27, 63400), (30, 63280), (33, 63256), (34, 63247), (36, 63136),

Gene: Mcshane_82 Start: 62558, Stop: 62136, Start Num: 18

Candidate Starts for Mcshane_82:

(Start: 18 @62558 has 40 MA's), (Start: 21 @62522 has 218 MA's), (Start: 22 @62486 has 1 MA's), (23, 62480), (25, 62465), (27, 62414), (30, 62294), (33, 62270), (34, 62261), (36, 62150),

Gene: Mecca_83 Start: 63076, Stop: 62690, Start Num: 21

Candidate Starts for Mecca_83:

(Start: 18 @63112 has 40 MA's), (Start: 21 @63076 has 218 MA's), (Start: 22 @63040 has 1 MA's), (23, 63034), (25, 63019), (27, 62968), (30, 62848), (33, 62824), (34, 62815), (36, 62704),

Gene: Megamind20_83 Start: 62486, Stop: 62100, Start Num: 21

Candidate Starts for Megamind20_83:

(Start: 18 @62522 has 40 MA's), (Start: 21 @62486 has 218 MA's), (Start: 22 @62450 has 1 MA's), (25, 62429), (30, 62258), (33, 62234), (34, 62225), (36, 62114),

Gene: Megatron_84 Start: 63194, Stop: 62808, Start Num: 21

Candidate Starts for Megatron_84:

(17, 63248), (Start: 18 @63230 has 40 MA's), (Start: 21 @63194 has 218 MA's), (Start: 22 @63158 has 1 MA's), (25, 63137), (30, 62966), (33, 62942), (34, 62933), (36, 62822),

Gene: Melc17_80 Start: 63144, Stop: 62758, Start Num: 21

Candidate Starts for Melc17_80:

(Start: 18 @63180 has 40 MA's), (Start: 21 @63144 has 218 MA's), (Start: 22 @63108 has 1 MA's), (23, 63102), (25, 63087), (27, 63036), (30, 62916), (33, 62892), (34, 62883), (36, 62772),

Gene: MelsMeow_82 Start: 62784, Stop: 62398, Start Num: 21

Candidate Starts for MelsMeow_82:

(Start: 18 @62820 has 40 MA's), (Start: 21 @62784 has 218 MA's), (Start: 22 @62748 has 1 MA's), (23, 62742), (25, 62727), (27, 62676), (30, 62556), (33, 62532), (34, 62523), (36, 62412),

Gene: Mesh1_84 Start: 63240, Stop: 62854, Start Num: 21

Candidate Starts for Mesh1_84:

(17, 63294), (Start: 18 @63276 has 40 MA's), (Start: 21 @63240 has 218 MA's), (Start: 22 @63204 has 1 MA's), (25, 63183), (27, 63132), (30, 63012), (33, 62988), (36, 62868),

Gene: Mesmerelda_84 Start: 63076, Stop: 62690, Start Num: 21

Candidate Starts for Mesmerelda_84:

(Start: 18 @63112 has 40 MA's), (Start: 21 @63076 has 218 MA's), (Start: 22 @63040 has 1 MA's), (23, 63034), (25, 63019), (27, 62968), (30, 62848), (33, 62824), (34, 62815), (36, 62704),

Gene: MichaelPhcott_81 Start: 62456, Stop: 62070, Start Num: 21

Candidate Starts for MichaelPhcott_81:

(15, 62567), (16, 62561), (Start: 18 @62492 has 40 MA's), (Start: 21 @62456 has 218 MA's), (Start: 22 @62420 has 1 MA's), (25, 62399), (27, 62348), (30, 62228), (33, 62204), (34, 62195), (36, 62084),

Gene: Mikota_80 Start: 62227, Stop: 61841, Start Num: 21

Candidate Starts for Mikota_80:

(15, 62338), (16, 62332), (Start: 18 @62263 has 40 MA's), (Start: 21 @62227 has 218 MA's), (Start: 22 @62191 has 1 MA's), (23, 62185), (25, 62170), (30, 61999), (33, 61975), (34, 61966), (36, 61855),

Gene: MiniBoss_80 Start: 61828, Stop: 61442, Start Num: 21

Candidate Starts for MiniBoss_80:

(15, 61939), (16, 61933), (Start: 18 @61864 has 40 MA's), (Start: 21 @61828 has 218 MA's), (Start: 22 @61792 has 1 MA's), (23, 61786), (25, 61771), (30, 61600), (33, 61576), (34, 61567), (36, 61456),

Gene: MitKao_83 Start: 62714, Stop: 62331, Start Num: 18

Candidate Starts for MitKao_83:

(Start: 18 @62714 has 40 MA's), (Start: 21 @62678 has 218 MA's), (Start: 22 @62642 has 1 MA's), (23, 62636), (25, 62621), (27, 62570), (30, 62450), (33, 62426), (34, 62417),

Gene: Morgushi_81 Start: 62528, Stop: 62106, Start Num: 18

Candidate Starts for Morgushi_81:

(Start: 18 @62528 has 40 MA's), (Start: 21 @62492 has 218 MA's), (Start: 22 @62456 has 1 MA's), (23, 62450), (25, 62435), (27, 62384), (30, 62264), (33, 62240), (34, 62231), (36, 62120),

Gene: Morty_84 Start: 63064, Stop: 62678, Start Num: 21

Candidate Starts for Morty_84:

(Start: 18 @63100 has 40 MA's), (Start: 21 @63064 has 218 MA's), (Start: 22 @63028 has 1 MA's), (23, 63022), (25, 63007), (27, 62956), (30, 62836), (33, 62812), (34, 62803), (36, 62692),

Gene: Mosaic_81 Start: 62674, Stop: 62282, Start Num: 21

Candidate Starts for Mosaic_81:

(Start: 18 @62710 has 40 MA's), (Start: 21 @62674 has 218 MA's), (Start: 22 @62638 has 1 MA's), (23, 62632), (25, 62617), (27, 62566), (30, 62446), (33, 62422), (34, 62413), (38, 62290),

Gene: MrPhizzler_82 Start: 62972, Stop: 62586, Start Num: 21

Candidate Starts for MrPhizzler_82:

(Start: 18 @63008 has 40 MA's), (Start: 21 @62972 has 218 MA's), (Start: 22 @62936 has 1 MA's), (25, 62915), (27, 62864), (30, 62744), (33, 62720), (36, 62600),

Gene: Mulan_82 Start: 62707, Stop: 62321, Start Num: 21

Candidate Starts for Mulan_82:

(Start: 18 @62743 has 40 MA's), (Start: 21 @62707 has 218 MA's), (Start: 22 @62671 has 1 MA's), (23, 62665), (25, 62650), (27, 62599), (30, 62479), (33, 62455), (34, 62446), (36, 62335),

Gene: Murdoc_80 Start: 62785, Stop: 62399, Start Num: 21

Candidate Starts for Murdoc_80:

(Start: 18 @62821 has 40 MA's), (Start: 21 @62785 has 218 MA's), (Start: 22 @62749 has 1 MA's), (23, 62743), (25, 62728), (27, 62677), (30, 62557), (33, 62533), (34, 62524), (36, 62413),

Gene: Mutante_84 Start: 62679, Stop: 62293, Start Num: 21

Candidate Starts for Mutante_84:

(Start: 18 @62715 has 40 MA's), (Start: 21 @62679 has 218 MA's), (Start: 22 @62643 has 1 MA's), (23, 62637), (25, 62622), (27, 62571), (30, 62451), (33, 62427), (34, 62418), (36, 62307),

Gene: Nacho_0086 Start: 63785, Stop: 63363, Start Num: 18

Candidate Starts for Nacho_0086:

(15, 63860), (16, 63854), (Start: 18 @63785 has 40 MA's), (Start: 21 @63749 has 218 MA's), (Start: 22 @63713 has 1 MA's), (23, 63707), (25, 63692), (30, 63521), (33, 63497), (34, 63488), (36, 63377),

Gene: Nathan_84 Start: 63205, Stop: 62819, Start Num: 21

Candidate Starts for Nathan_84:

(13, 63361), (Start: 18 @63241 has 40 MA's), (Start: 21 @63205 has 218 MA's), (Start: 22 @63169 has 1 MA's), (23, 63163), (25, 63148), (27, 63097), (30, 62977), (33, 62953), (34, 62944), (36, 62833),

Gene: Newman_81 Start: 63026, Stop: 62640, Start Num: 21

Candidate Starts for Newman_81:

(15, 63137), (16, 63131), (Start: 18 @63062 has 40 MA's), (Start: 21 @63026 has 218 MA's), (Start: 22 @62990 has 1 MA's), (23, 62984), (25, 62969), (30, 62798), (33, 62774), (34, 62765), (36, 62654),

Gene: Nicole21_84 Start: 62812, Stop: 62426, Start Num: 21

Candidate Starts for Nicole21_84:

(15, 62923), (16, 62917), (Start: 18 @62848 has 40 MA's), (Start: 21 @62812 has 218 MA's), (Start: 22 @62776 has 1 MA's), (23, 62770), (25, 62755), (27, 62704), (30, 62584), (33, 62560), (34, 62551), (36, 62440),

Gene: Numberten_82 Start: 62830, Stop: 62408, Start Num: 18

Candidate Starts for Numberten_82:

(Start: 18 @62830 has 40 MA's), (Start: 21 @62794 has 218 MA's), (Start: 22 @62758 has 1 MA's), (23, 62752), (25, 62737), (27, 62686), (30, 62566), (33, 62542), (34, 62533), (36, 62422),

Gene: Nyala_82 Start: 62529, Stop: 62143, Start Num: 21

Candidate Starts for Nyala_82:

(Start: 18 @62565 has 40 MA's), (Start: 21 @62529 has 218 MA's), (Start: 22 @62493 has 1 MA's), (23, 62487), (25, 62472), (27, 62421), (30, 62301), (33, 62277), (34, 62268), (36, 62157),

Gene: Olak_82 Start: 62693, Stop: 62307, Start Num: 21

Candidate Starts for Olak_82:

(Start: 18 @62729 has 40 MA's), (Start: 21 @62693 has 218 MA's), (Start: 22 @62657 has 1 MA's), (25, 62636), (27, 62585), (30, 62465), (33, 62441), (34, 62432), (36, 62321),

Gene: Oline_82 Start: 62682, Stop: 62296, Start Num: 21

Candidate Starts for Oline_82:

(15, 62793), (16, 62787), (Start: 18 @62718 has 40 MA's), (Start: 21 @62682 has 218 MA's), (Start: 22 @62646 has 1 MA's), (25, 62625), (27, 62574), (30, 62454), (33, 62430), (34, 62421), (36, 62310),

Gene: Olive_81 Start: 62923, Stop: 62537, Start Num: 21

Candidate Starts for Olive_81:

(15, 63034), (16, 63028), (Start: 18 @62959 has 40 MA's), (Start: 21 @62923 has 218 MA's), (Start: 22 @62887 has 1 MA's), (23, 62881), (25, 62866), (27, 62815), (30, 62695), (33, 62671), (34, 62662), (36, 62551),

Gene: OliverWalter_83 Start: 62980, Stop: 62594, Start Num: 21

Candidate Starts for OliverWalter_83:

(Start: 18 @63016 has 40 MA's), (Start: 21 @62980 has 218 MA's), (Start: 22 @62944 has 1 MA's), (23, 62938), (25, 62923), (27, 62872), (30, 62752), (33, 62728), (34, 62719), (36, 62608),

Gene: Omniscient_84 Start: 63383, Stop: 62997, Start Num: 21

Candidate Starts for Omniscient_84:

(Start: 18 @63419 has 40 MA's), (Start: 21 @63383 has 218 MA's), (Start: 22 @63347 has 1 MA's), (23, 63341), (25, 63326), (27, 63275), (30, 63155), (33, 63131), (34, 63122), (36, 63011),

Gene: Oosterbaan_83 Start: 62920, Stop: 62534, Start Num: 21

Candidate Starts for Oosterbaan_83:

(Start: 18 @62956 has 40 MA's), (Start: 21 @62920 has 218 MA's), (Start: 22 @62884 has 1 MA's), (23, 62878), (25, 62863), (27, 62812), (30, 62692), (33, 62668), (34, 62659), (36, 62548),

Gene: Orfeu_82 Start: 63042, Stop: 62656, Start Num: 21

Candidate Starts for Orfeu_82:

(Start: 18 @63078 has 40 MA's), (Start: 21 @63042 has 218 MA's), (Start: 22 @63006 has 1 MA's), (23, 63000), (25, 62985), (27, 62934), (30, 62814), (33, 62790), (34, 62781), (36, 62670),

Gene: Orion_82 Start: 62612, Stop: 62226, Start Num: 21

Candidate Starts for Orion_82:

(Start: 18 @62648 has 40 MA's), (Start: 21 @62612 has 218 MA's), (Start: 22 @62576 has 1 MA's), (23, 62570), (25, 62555), (27, 62504), (30, 62384), (33, 62360), (34, 62351), (36, 62240),

Gene: Orwigg_82 Start: 62448, Stop: 62062, Start Num: 21

Candidate Starts for Orwigg_82:

(Start: 18 @62484 has 40 MA's), (Start: 21 @62448 has 218 MA's), (Start: 22 @62412 has 1 MA's), (23, 62406), (25, 62391), (27, 62340), (30, 62220), (33, 62196), (34, 62187), (36, 62076),

Gene: PG1_82 Start: 63184, Stop: 62798, Start Num: 21

Candidate Starts for PG1_82:

(Start: 18 @63220 has 40 MA's), (Start: 21 @63184 has 218 MA's), (Start: 22 @63148 has 1 MA's), (23, 63142), (25, 63127), (27, 63076), (30, 62956), (33, 62932), (34, 62923), (36, 62812),

Gene: Pacifista_82 Start: 62532, Stop: 62146, Start Num: 21

Candidate Starts for Pacifista_82:

(15, 62643), (16, 62637), (Start: 18 @62568 has 40 MA's), (Start: 21 @62532 has 218 MA's), (Start: 22 @62496 has 1 MA's), (25, 62475), (27, 62424), (30, 62304), (33, 62280), (36, 62160),

Gene: Phamished_83 Start: 62736, Stop: 62314, Start Num: 18

Candidate Starts for Phamished_83:

(Start: 18 @62736 has 40 MA's), (Start: 21 @62700 has 218 MA's), (Start: 22 @62664 has 1 MA's), (23, 62658), (25, 62643), (27, 62592), (30, 62472), (33, 62448), (34, 62439), (36, 62328),

Gene: Phareon_81 Start: 62225, Stop: 61833, Start Num: 21

Candidate Starts for Phareon_81:

(Start: 18 @62261 has 40 MA's), (Start: 21 @62225 has 218 MA's), (Start: 22 @62189 has 1 MA's), (23, 62183), (25, 62168), (27, 62117), (30, 61997), (33, 61973), (34, 61964), (38, 61841),

Gene: PhatCats2014_83 Start: 63184, Stop: 62798, Start Num: 21

Candidate Starts for PhatCats2014_83:

(Start: 18 @63220 has 40 MA's), (Start: 21 @63184 has 218 MA's), (Start: 22 @63148 has 1 MA's), (23, 63142), (25, 63127), (27, 63076), (30, 62956), (33, 62932), (34, 62923), (36, 62812),

Gene: PhatLouie_85 Start: 63059, Stop: 62673, Start Num: 21

Candidate Starts for PhatLouie_85:

(Start: 18 @63095 has 40 MA's), (Start: 21 @63059 has 218 MA's), (Start: 22 @63023 has 1 MA's), (23, 63017), (25, 63002), (27, 62951), (30, 62831), (33, 62807), (34, 62798), (36, 62687),

Gene: PhenghisKhan_83 Start: 62688, Stop: 62302, Start Num: 21

Candidate Starts for PhenghisKhan_83:

(15, 62799), (16, 62793), (Start: 18 @62724 has 40 MA's), (Start: 21 @62688 has 218 MA's), (Start: 22 @62652 has 1 MA's), (25, 62631), (27, 62580), (30, 62460), (33, 62436), (34, 62427), (36, 62316),

Gene: Pherdinand_84 Start: 62904, Stop: 62518, Start Num: 21

Candidate Starts for Pherdinand_84:

(15, 63015), (16, 63009), (Start: 18 @62940 has 40 MA's), (Start: 21 @62904 has 218 MA's), (Start: 22 @62868 has 1 MA's), (25, 62847), (27, 62796), (30, 62676), (33, 62652), (36, 62532),

Gene: Phergie_83 Start: 62677, Stop: 62291, Start Num: 21

Candidate Starts for Phergie_83:

(15, 62788), (16, 62782), (Start: 18 @62713 has 40 MA's), (Start: 21 @62677 has 218 MA's), (Start: 22 @62641 has 1 MA's), (25, 62620), (27, 62569), (30, 62449), (33, 62425), (34, 62416), (36, 62305),

Gene: Phipps_82 Start: 62756, Stop: 62370, Start Num: 21

Candidate Starts for Phipps_82:

(Start: 18 @62792 has 40 MA's), (Start: 21 @62756 has 218 MA's), (Start: 22 @62720 has 1 MA's), (23, 62714), (25, 62699), (27, 62648), (30, 62528), (33, 62504), (34, 62495), (36, 62384),

Gene: Phleuron_81 Start: 62489, Stop: 62103, Start Num: 21

Candidate Starts for Phleuron_81:

(15, 62600), (16, 62594), (Start: 18 @62525 has 40 MA's), (Start: 21 @62489 has 218 MA's), (Start: 22 @62453 has 1 MA's), (25, 62432), (27, 62381), (30, 62261), (33, 62237), (34, 62228), (36, 62117),

Gene: PhrankReynolds_82 Start: 62682, Stop: 62296, Start Num: 21

Candidate Starts for PhrankReynolds_82:

(15, 62793), (16, 62787), (Start: 18 @62718 has 40 MA's), (Start: 21 @62682 has 218 MA's), (Start: 22 @62646 has 1 MA's), (25, 62625), (27, 62574), (30, 62454), (33, 62430), (34, 62421), (36, 62310),

Gene: PhrodoBaggins_85 Start: 63059, Stop: 62673, Start Num: 21

Candidate Starts for PhrodoBaggins_85:

(Start: 18 @63095 has 40 MA's), (Start: 21 @63059 has 218 MA's), (Start: 22 @63023 has 1 MA's), (23, 63017), (25, 63002), (27, 62951), (30, 62831), (33, 62807), (34, 62798), (36, 62687),

Gene: Phunky_81 Start: 62563, Stop: 62177, Start Num: 21

Candidate Starts for Phunky_81:

(Start: 18 @62599 has 40 MA's), (Start: 21 @62563 has 218 MA's), (Start: 22 @62527 has 1 MA's), (25, 62506), (27, 62455), (30, 62335), (33, 62311), (34, 62302), (36, 62191),

Gene: Piglet_0083 Start: 63214, Stop: 62792, Start Num: 18

Candidate Starts for Piglet_0083:

(Start: 18 @63214 has 40 MA's), (Start: 21 @63178 has 218 MA's), (Start: 22 @63142 has 1 MA's), (23, 63136), (25, 63121), (27, 63070), (30, 62950), (33, 62926), (34, 62917), (36, 62806),

Gene: PinheadLarry_82 Start: 62865, Stop: 62443, Start Num: 18

Candidate Starts for PinheadLarry_82:

(Start: 18 @62865 has 40 MA's), (Start: 21 @62829 has 218 MA's), (Start: 22 @62793 has 1 MA's), (25, 62772), (27, 62721), (30, 62601), (33, 62577), (34, 62568), (36, 62457),

Gene: Pinkman_83 Start: 62901, Stop: 62515, Start Num: 21

Candidate Starts for Pinkman_83:

(15, 63012), (16, 63006), (Start: 18 @62937 has 40 MA's), (Start: 21 @62901 has 218 MA's), (Start: 22 @62865 has 1 MA's), (25, 62844), (27, 62793), (30, 62673), (33, 62649), (34, 62640), (36, 62529),

Gene: Pipsqueak_80 Start: 62550, Stop: 62128, Start Num: 18

Candidate Starts for Pipsqueak_80:

(15, 62625), (16, 62619), (Start: 18 @62550 has 40 MA's), (Start: 21 @62514 has 218 MA's), (Start: 22 @62478 has 1 MA's), (25, 62457), (30, 62286), (33, 62262), (34, 62253), (36, 62142),

Gene: Placalicious_82 Start: 63548, Stop: 63162, Start Num: 21

Candidate Starts for Placalicious_82:

(Start: 18 @63584 has 40 MA's), (Start: 21 @63548 has 218 MA's), (Start: 22 @63512 has 1 MA's), (23, 63506), (25, 63491), (27, 63440), (30, 63320), (33, 63296), (34, 63287), (36, 63176),

Gene: Plata_82 Start: 62769, Stop: 62383, Start Num: 21

Candidate Starts for Plata_82:

(15, 62880), (16, 62874), (Start: 18 @62805 has 40 MA's), (Start: 21 @62769 has 218 MA's), (Start: 22 @62733 has 1 MA's), (23, 62727), (25, 62712), (27, 62661), (30, 62541), (33, 62517), (36, 62397),

Gene: Plmatters_81 Start: 62503, Stop: 62117, Start Num: 21

Candidate Starts for Plmatters_81:

(13, 62659), (Start: 18 @62539 has 40 MA's), (Start: 21 @62503 has 218 MA's), (Start: 22 @62467 has 1 MA's), (23, 62461), (25, 62446), (30, 62275), (33, 62251), (34, 62242), (36, 62131),

Gene: Podrick_82 Start: 62590, Stop: 62204, Start Num: 21

Candidate Starts for Podrick_82:

(15, 62701), (16, 62695), (Start: 18 @62626 has 40 MA's), (Start: 21 @62590 has 218 MA's), (Start: 22 @62554 has 1 MA's), (23, 62548), (25, 62533), (27, 62482), (30, 62362), (33, 62338), (34, 62329), (36, 62218),

Gene: Pops_81 Start: 62692, Stop: 62306, Start Num: 21

Candidate Starts for Pops_81:

(15, 62803), (16, 62797), (Start: 18 @62728 has 40 MA's), (Start: 21 @62692 has 218 MA's), (Start: 22 @62656 has 1 MA's), (23, 62650), (25, 62635), (27, 62584), (30, 62464), (33, 62440), (34, 62431), (36, 62320),

Gene: Potter_79 Start: 62512, Stop: 62126, Start Num: 21

Candidate Starts for Potter_79:

(Start: 18 @62548 has 40 MA's), (Start: 21 @62512 has 218 MA's), (Start: 22 @62476 has 1 MA's), (23, 62470), (25, 62455), (27, 62404), (30, 62284), (33, 62260), (36, 62140),

Gene: ProfessorX_81 Start: 62549, Stop: 62163, Start Num: 21

Candidate Starts for ProfessorX_81:

(Start: 18 @62585 has 40 MA's), (Start: 21 @62549 has 218 MA's), (Start: 22 @62513 has 1 MA's), (23, 62507), (25, 62492), (27, 62441), (30, 62321), (33, 62297), (34, 62288), (36, 62177),

Gene: Puhltonio_80 Start: 62822, Stop: 62400, Start Num: 18

Candidate Starts for Puhltonio_80:

(Start: 18 @62822 has 40 MA's), (Start: 21 @62786 has 218 MA's), (Start: 22 @62750 has 1 MA's), (23, 62744), (25, 62729), (27, 62678), (30, 62558), (33, 62534), (34, 62525), (36, 62414),

Gene: Pupper_67 Start: 23663, Stop: 24055, Start Num: 19

Candidate Starts for Pupper_67:

(Start: 19 @23663 has 3 MA's),

Gene: QueenBeane_83 Start: 62836, Stop: 62450, Start Num: 21

Candidate Starts for QueenBeane_83:

(17, 62890), (Start: 18 @62872 has 40 MA's), (Start: 21 @62836 has 218 MA's), (Start: 22 @62800 has 1 MA's), (25, 62779), (27, 62728), (30, 62608), (33, 62584), (34, 62575), (36, 62464),

Gene: Quisquilliae_85 Start: 62882, Stop: 62460, Start Num: 18

Candidate Starts for Quisquilliae_85:

(Start: 18 @62882 has 40 MA's), (Start: 21 @62846 has 218 MA's), (Start: 22 @62810 has 1 MA's), (23, 62804), (25, 62789), (27, 62738), (30, 62618), (33, 62594), (34, 62585), (36, 62474),

Gene: RedMaple_83 Start: 63449, Stop: 63063, Start Num: 21

Candidate Starts for RedMaple_83:

(13, 63605), (Start: 18 @63485 has 40 MA's), (Start: 21 @63449 has 218 MA's), (Start: 22 @63413 has 1 MA's), (23, 63407), (25, 63392), (27, 63341), (30, 63221), (33, 63197), (34, 63188), (36, 63077),

Gene: Ricotta_83 Start: 62530, Stop: 62144, Start Num: 21

Candidate Starts for Ricotta_83:

(15, 62641), (16, 62635), (Start: 18 @62566 has 40 MA's), (Start: 21 @62530 has 218 MA's), (Start: 22 @62494 has 1 MA's), (25, 62473), (27, 62422), (30, 62302), (33, 62278), (34, 62269), (36, 62158),

Gene: Riggan_84 Start: 62980, Stop: 62630, Start Num: 22

Candidate Starts for Riggan_84:

(15, 63127), (16, 63121), (Start: 18 @63052 has 40 MA's), (Start: 21 @63016 has 218 MA's), (Start: 22 @62980 has 1 MA's), (25, 62959), (27, 62908), (30, 62788), (33, 62764), (36, 62644),

Gene: Rimu_87 Start: 62995, Stop: 62603, Start Num: 21

Candidate Starts for Rimu_87:

(Start: 18 @63031 has 40 MA's), (Start: 21 @62995 has 218 MA's), (Start: 22 @62959 has 1 MA's), (23, 62953), (25, 62938), (27, 62887), (30, 62767), (33, 62743), (34, 62734), (36, 62623), (38, 62611),

Gene: Riverton_82 Start: 62774, Stop: 62388, Start Num: 21

Candidate Starts for Riverton_82:

(15, 62885), (16, 62879), (Start: 18 @62810 has 40 MA's), (Start: 21 @62774 has 218 MA's), (Start: 22 @62738 has 1 MA's), (23, 62732), (25, 62717), (30, 62546), (33, 62522), (34, 62513), (36, 62402),

Gene: Robyn_85 Start: 63273, Stop: 62887, Start Num: 21

Candidate Starts for Robyn_85:

(15, 63384), (16, 63378), (Start: 18 @63309 has 40 MA's), (Start: 21 @63273 has 218 MA's), (Start: 22 @63237 has 1 MA's), (23, 63231), (25, 63216), (30, 63045), (33, 63021), (34, 63012), (36, 62901),

Gene: Roliet_80 Start: 61876, Stop: 61490, Start Num: 21

Candidate Starts for Roliet_80:

(Start: 18 @61912 has 40 MA's), (Start: 21 @61876 has 218 MA's), (Start: 22 @61840 has 1 MA's), (23, 61834), (25, 61819), (30, 61648), (33, 61624), (34, 61615), (36, 61504),

Gene: Roscoe_83 Start: 63135, Stop: 62749, Start Num: 21

Candidate Starts for Roscoe_83:

(15, 63246), (16, 63240), (Start: 18 @63171 has 40 MA's), (Start: 21 @63135 has 218 MA's), (Start: 22 @63099 has 1 MA's), (23, 63093), (25, 63078), (30, 62907), (33, 62883), (34, 62874), (36, 62763),

Gene: Roy17_81 Start: 62277, Stop: 61855, Start Num: 18

Candidate Starts for Roy17_81:

(Start: 18 @62277 has 40 MA's), (Start: 21 @62241 has 218 MA's), (Start: 22 @62205 has 1 MA's), (23, 62199), (25, 62184), (27, 62133), (30, 62013), (33, 61989), (34, 61980), (36, 61869),

Gene: SCentae_66 Start: 23417, Stop: 23809, Start Num: 19

Candidate Starts for SCentae_66:

(Start: 19 @23417 has 3 MA's),

Gene: SDcharge11_82 Start: 62204, Stop: 61782, Start Num: 18

Candidate Starts for SDcharge11_82:

(15, 62279), (16, 62273), (Start: 18 @62204 has 40 MA's), (Start: 21 @62168 has 218 MA's), (Start: 22 @62132 has 1 MA's), (23, 62126), (25, 62111), (30, 61940), (33, 61916), (34, 61907), (36, 61796),

Gene: Samaymay_83 Start: 62836, Stop: 62450, Start Num: 21

Candidate Starts for Samaymay_83:

(17, 62890), (Start: 18 @62872 has 40 MA's), (Start: 21 @62836 has 218 MA's), (Start: 22 @62800 has 1 MA's), (25, 62779), (27, 62728), (30, 62608), (33, 62584), (34, 62575), (36, 62464),

Gene: SassyCat97_81 Start: 62503, Stop: 62117, Start Num: 21

Candidate Starts for SassyCat97_81:

(17, 62557), (Start: 18 @62539 has 40 MA's), (Start: 21 @62503 has 218 MA's), (Start: 22 @62467 has 1 MA's), (23, 62461), (25, 62446), (27, 62395), (30, 62275), (33, 62251), (34, 62242), (36, 62131),

Gene: Schadenfreude_83 Start: 62394, Stop: 62008, Start Num: 21

Candidate Starts for Schadenfreude_83:

(13, 62550), (14, 62523), (17, 62448), (Start: 18 @62430 has 40 MA's), (Start: 21 @62394 has 218 MA's), (Start: 22 @62358 has 1 MA's), (25, 62337), (27, 62286), (30, 62166), (33, 62142), (34, 62133), (36, 62022),

Gene: Schueller_81 Start: 62776, Stop: 62390, Start Num: 21

Candidate Starts for Schueller_81:

(15, 62887), (16, 62881), (Start: 18 @62812 has 40 MA's), (Start: 21 @62776 has 218 MA's), (Start: 22 @62740 has 1 MA's), (25, 62719), (27, 62668), (30, 62548), (33, 62524), (34, 62515), (36, 62404),

Gene: Scoot17C_84 Start: 62616, Stop: 62230, Start Num: 21

Candidate Starts for Scoot17C_84:

(Start: 18 @62652 has 40 MA's), (Start: 21 @62616 has 218 MA's), (Start: 22 @62580 has 1 MA's), (23, 62574), (25, 62559), (27, 62508), (30, 62388), (33, 62364), (34, 62355), (36, 62244),

Gene: Scrick_82 Start: 62517, Stop: 62131, Start Num: 21

Candidate Starts for Scrick_82:

(Start: 18 @62553 has 40 MA's), (Start: 21 @62517 has 218 MA's), (Start: 22 @62481 has 1 MA's), (23, 62475), (25, 62460), (27, 62409), (30, 62289), (33, 62265), (34, 62256), (36, 62145),

Gene: Selr12_84 Start: 62559, Stop: 62173, Start Num: 21

Candidate Starts for Selr12_84:

(Start: 18 @62595 has 40 MA's), (Start: 21 @62559 has 218 MA's), (Start: 22 @62523 has 1 MA's), (23, 62517), (25, 62502), (27, 62451), (30, 62331), (33, 62307), (34, 62298), (36, 62187),

Gene: Serendipity_83 Start: 62989, Stop: 62603, Start Num: 21

Candidate Starts for Serendipity_83:

(Start: 18 @63025 has 40 MA's), (Start: 21 @62989 has 218 MA's), (Start: 22 @62953 has 1 MA's), (23, 62947), (25, 62932), (27, 62881), (30, 62761), (33, 62737), (34, 62728), (36, 62617),

Gene: Serpentine_0084 Start: 63106, Stop: 62684, Start Num: 18

Candidate Starts for Serpentine_0084:

(Start: 18 @63106 has 40 MA's), (Start: 21 @63070 has 218 MA's), (Start: 22 @63034 has 1 MA's), (23, 63028), (25, 63013), (27, 62962), (30, 62842), (33, 62818), (34, 62809), (36, 62698),

Gene: Settecandela_194 Start: 123383, Stop: 123754, Start Num: 21

Candidate Starts for Settecandela_194:

(1, 122219), (2, 122393), (3, 122705), (4, 122948), (20, 123380), (Start: 21 @123383 has 218 MA's), (24, 123431), (26, 123464), (28, 123578), (29, 123590), (31, 123608), (32, 123620), (34, 123632), (35, 123731), (37, 123746),

Gene: Sheila_79 Start: 62081, Stop: 61695, Start Num: 21

Candidate Starts for Sheila_79:

(15, 62192), (16, 62186), (Start: 18 @62117 has 40 MA's), (Start: 21 @62081 has 218 MA's), (Start: 22 @62045 has 1 MA's), (23, 62039), (25, 62024), (30, 61853), (33, 61829), (34, 61820), (36, 61709),

Gene: ShiVal_81 Start: 62577, Stop: 62155, Start Num: 18

Candidate Starts for ShiVal_81:

(Start: 18 @62577 has 40 MA's), (Start: 21 @62541 has 218 MA's), (Start: 22 @62505 has 1 MA's), (23, 62499), (25, 62484), (27, 62433), (30, 62313), (33, 62289), (34, 62280), (36, 62169),

Gene: Sigman_83 Start: 62532, Stop: 62110, Start Num: 18

Candidate Starts for Sigman_83:

(15, 62607), (16, 62601), (Start: 18 @62532 has 40 MA's), (Start: 21 @62496 has 218 MA's), (Start: 22 @62460 has 1 MA's), (25, 62439), (30, 62268), (33, 62244), (34, 62235), (36, 62124),

Gene: SilverBell_84 Start: 62950, Stop: 62564, Start Num: 21

Candidate Starts for SilverBell_84:

(15, 63061), (16, 63055), (Start: 18 @62986 has 40 MA's), (Start: 21 @62950 has 218 MA's), (Start: 22 @62914 has 1 MA's), (23, 62908), (25, 62893), (27, 62842), (30, 62722), (33, 62698), (34, 62689), (36, 62578),

Gene: Simielle_82 Start: 62483, Stop: 62097, Start Num: 21

Candidate Starts for Simielle_82:

(Start: 18 @62519 has 40 MA's), (Start: 21 @62483 has 218 MA's), (Start: 22 @62447 has 1 MA's), (23, 62441), (25, 62426), (27, 62375), (30, 62255), (33, 62231), (34, 62222), (36, 62111),

Gene: SirBeauregard_84 Start: 63063, Stop: 62677, Start Num: 21

Candidate Starts for SirBeauregard_84:

(Start: 18 @63099 has 40 MA's), (Start: 21 @63063 has 218 MA's), (Start: 22 @63027 has 1 MA's), (25, 63006), (27, 62955), (30, 62835), (33, 62811), (34, 62802), (36, 62691),

Gene: Skippy_84 Start: 62911, Stop: 62525, Start Num: 21

Candidate Starts for Skippy_84:

(Start: 18 @62947 has 40 MA's), (Start: 21 @62911 has 218 MA's), (Start: 22 @62875 has 1 MA's), (23, 62869), (25, 62854), (27, 62803), (30, 62683), (33, 62659), (34, 62650), (36, 62539),

Gene: Slatt_83 Start: 62798, Stop: 62412, Start Num: 21

Candidate Starts for Slatt_83:

(Start: 18 @62834 has 40 MA's), (Start: 21 @62798 has 218 MA's), (Start: 22 @62762 has 1 MA's), (23, 62756), (25, 62741), (27, 62690), (30, 62570), (33, 62546), (34, 62537), (36, 62426),

Gene: Soile_84 Start: 63035, Stop: 62649, Start Num: 21

Candidate Starts for Soile_84:

(15, 63146), (16, 63140), (Start: 18 @63071 has 40 MA's), (Start: 21 @63035 has 218 MA's), (Start: 22 @62999 has 1 MA's), (25, 62978), (27, 62927), (30, 62807), (33, 62783), (34, 62774), (36, 62663),

Gene: Solosis_81 Start: 62503, Stop: 62117, Start Num: 21

Candidate Starts for Solosis_81:

(6, 62830), (7, 62779), (8, 62755), (11, 62728), (12, 62707), (15, 62614), (16, 62608), (Start: 18 @62539 has 40 MA's), (Start: 21 @62503 has 218 MA's), (Start: 22 @62467 has 1 MA's), (23, 62461), (25, 62446), (27, 62395), (30, 62275), (33, 62251), (36, 62131),

Gene: Sophia_81 Start: 62493, Stop: 62107, Start Num: 21

Candidate Starts for Sophia_81:

(Start: 18 @62529 has 40 MA's), (Start: 21 @62493 has 218 MA's), (Start: 22 @62457 has 1 MA's), (25, 62436), (27, 62385), (30, 62265), (33, 62241), (34, 62232), (36, 62121),

Gene: Soto_80 Start: 62244, Stop: 61816, Start Num: 18

Candidate Starts for Soto_80:

(15, 62319), (16, 62313), (Start: 18 @62244 has 40 MA's), (Start: 21 @62208 has 218 MA's), (Start: 22 @62172 has 1 MA's), (23, 62166), (25, 62151), (30, 61980), (33, 61956), (34, 61947), (38, 61824),

Gene: Spartan300_82 Start: 62754, Stop: 62368, Start Num: 21

Candidate Starts for Spartan300_82:

(Start: 18 @62790 has 40 MA's), (Start: 21 @62754 has 218 MA's), (Start: 22 @62718 has 1 MA's), (23, 62712), (25, 62697), (27, 62646), (30, 62526), (33, 62502), (34, 62493), (36, 62382),

Gene: Squid_82 Start: 62819, Stop: 62397, Start Num: 18

Candidate Starts for Squid_82:

(Start: 18 @62819 has 40 MA's), (Start: 21 @62783 has 218 MA's), (Start: 22 @62747 has 1 MA's), (23, 62741), (25, 62726), (27, 62675), (30, 62555), (33, 62531), (34, 62522), (36, 62411),

Gene: Squiggle_82 Start: 62511, Stop: 62125, Start Num: 21

Candidate Starts for Squiggle_82:

(Start: 18 @62547 has 40 MA's), (Start: 21 @62511 has 218 MA's), (Start: 22 @62475 has 1 MA's), (23, 62469), (25, 62454), (27, 62403), (30, 62283), (33, 62259), (34, 62250), (36, 62139),

Gene: Struggle_83 Start: 62645, Stop: 62217, Start Num: 18

Candidate Starts for Struggle_83:

(Start: 18 @62645 has 40 MA's), (Start: 21 @62609 has 218 MA's), (Start: 22 @62573 has 1 MA's), (23, 62567), (25, 62552), (27, 62501), (30, 62381), (33, 62357), (34, 62348), (36, 62237), (38, 62225),

Gene: Suffolk_80 Start: 62540, Stop: 62118, Start Num: 18

Candidate Starts for Suffolk_80:

(15, 62615), (16, 62609), (Start: 18 @62540 has 40 MA's), (Start: 21 @62504 has 218 MA's), (Start: 22 @62468 has 1 MA's), (23, 62462), (25, 62447), (30, 62276), (33, 62252), (34, 62243), (36, 62132),

Gene: Surely_83 Start: 63074, Stop: 62688, Start Num: 21

Candidate Starts for Surely_83:

(Start: 18 @63110 has 40 MA's), (Start: 21 @63074 has 218 MA's), (Start: 22 @63038 has 1 MA's), (25, 63017), (27, 62966), (30, 62846), (33, 62822), (34, 62813), (36, 62702),

Gene: Swiphy_87 Start: 63059, Stop: 62673, Start Num: 21

Candidate Starts for Swiphy_87:

(Start: 18 @63095 has 40 MA's), (Start: 21 @63059 has 218 MA's), (Start: 22 @63023 has 1 MA's), (23, 63017), (25, 63002), (27, 62951), (30, 62831), (33, 62807), (34, 62798), (36, 62687),

Gene: Swish_84 Start: 62919, Stop: 62533, Start Num: 21

Candidate Starts for Swish_84:

(15, 63030), (16, 63024), (Start: 18 @62955 has 40 MA's), (Start: 21 @62919 has 218 MA's), (Start: 22 @62883 has 1 MA's), (25, 62862), (27, 62811), (30, 62691), (33, 62667), (36, 62547),

Gene: TallGrassMM_82 Start: 62568, Stop: 62182, Start Num: 21

Candidate Starts for TallGrassMM_82:

(6, 62895), (7, 62844), (8, 62820), (11, 62793), (12, 62772), (15, 62679), (16, 62673), (Start: 18 @62604 has 40 MA's), (Start: 21 @62568 has 218 MA's), (Start: 22 @62532 has 1 MA's), (23, 62526), (25, 62511), (27, 62460), (30, 62340), (33, 62316), (36, 62196),

Gene: Telesworld_81 Start: 62646, Stop: 62260, Start Num: 21

Candidate Starts for Telesworld_81:

(15, 62757), (16, 62751), (Start: 18 @62682 has 40 MA's), (Start: 21 @62646 has 218 MA's), (Start: 22 @62610 has 1 MA's), (23, 62604), (25, 62589), (27, 62538), (30, 62418), (33, 62394), (34, 62385), (36, 62274),

Gene: Thora_82 Start: 63024, Stop: 62638, Start Num: 21

Candidate Starts for Thora_82:

(Start: 18 @63060 has 40 MA's), (Start: 21 @63024 has 218 MA's), (Start: 22 @62988 has 1 MA's), (23, 62982), (25, 62967), (27, 62916), (30, 62796), (33, 62772), (34, 62763), (36, 62652),

Gene: ThreeOh3D2_85 Start: 63177, Stop: 62791, Start Num: 21

Candidate Starts for ThreeOh3D2_85:

(Start: 18 @63213 has 40 MA's), (Start: 21 @63177 has 218 MA's), (Start: 22 @63141 has 1 MA's), (23, 63135), (25, 63120), (27, 63069), (30, 62949), (33, 62925), (34, 62916), (36, 62805),

Gene: Thunderbird_83 Start: 62765, Stop: 62379, Start Num: 21

Candidate Starts for Thunderbird_83:

(15, 62876), (16, 62870), (Start: 18 @62801 has 40 MA's), (Start: 21 @62765 has 218 MA's), (Start: 22 @62729 has 1 MA's), (25, 62708), (27, 62657), (30, 62537), (33, 62513), (36, 62393),

Gene: Timmi_82 Start: 62540, Stop: 62154, Start Num: 21

Candidate Starts for Timmi_82:

(Start: 18 @62576 has 40 MA's), (Start: 21 @62540 has 218 MA's), (Start: 22 @62504 has 1 MA's), (23, 62498), (25, 62483), (27, 62432), (30, 62312), (33, 62288), (34, 62279), (36, 62168),

Gene: TomBombadil_83 Start: 63067, Stop: 62681, Start Num: 21

Candidate Starts for TomBombadil_83:

(Start: 18 @63103 has 40 MA's), (Start: 21 @63067 has 218 MA's), (Start: 22 @63031 has 1 MA's), (25, 63010), (27, 62959), (30, 62839), (33, 62815), (34, 62806), (36, 62695),

Gene: Tomlarah_84 Start: 63410, Stop: 62988, Start Num: 18

Candidate Starts for Tomlarah_84:

(Start: 18 @63410 has 40 MA's), (Start: 21 @63374 has 218 MA's), (Start: 22 @63338 has 1 MA's), (23, 63332), (25, 63317), (27, 63266), (30, 63146), (33, 63122), (34, 63113), (36, 63002),

Gene: Toni_83 Start: 62970, Stop: 62584, Start Num: 21

Candidate Starts for Toni_83:

(Start: 18 @63006 has 40 MA's), (Start: 21 @62970 has 218 MA's), (Start: 22 @62934 has 1 MA's), (23, 62928), (25, 62913), (27, 62862), (30, 62742), (33, 62718), (34, 62709), (36, 62598),

Gene: TooFast2Furius_85 Start: 62930, Stop: 62544, Start Num: 21

Candidate Starts for TooFast2Furius_85:

(15, 63041), (16, 63035), (Start: 18 @62966 has 40 MA's), (Start: 21 @62930 has 218 MA's), (Start: 22 @62894 has 1 MA's), (23, 62888), (25, 62873), (30, 62702), (33, 62678), (34, 62669), (36, 62558),

Gene: Tooj_80 Start: 62183, Stop: 61797, Start Num: 21

Candidate Starts for Tooj_80:

(17, 62237), (Start: 18 @62219 has 40 MA's), (Start: 21 @62183 has 218 MA's), (Start: 22 @62147 has 1 MA's), (25, 62126), (30, 61955), (33, 61931), (34, 61922), (36, 61811),

Gene: True_81 Start: 62516, Stop: 62130, Start Num: 21

Candidate Starts for True_81:

(Start: 18 @62552 has 40 MA's), (Start: 21 @62516 has 218 MA's), (Start: 22 @62480 has 1 MA's), (23, 62474), (25, 62459), (27, 62408), (30, 62288), (33, 62264), (34, 62255), (36, 62144),

Gene: Trypo_84 Start: 63238, Stop: 62852, Start Num: 21

Candidate Starts for Trypo_84:

(Start: 18 @63274 has 40 MA's), (Start: 21 @63238 has 218 MA's), (Start: 22 @63202 has 1 MA's), (23, 63196), (25, 63181), (27, 63130), (30, 63010), (33, 62986), (34, 62977), (36, 62866),

Gene: TyrionL_83 Start: 62600, Stop: 62214, Start Num: 21

Candidate Starts for TyrionL_83:

(Start: 18 @62636 has 40 MA's), (Start: 21 @62600 has 218 MA's), (Start: 22 @62564 has 1 MA's), (23, 62558), (25, 62543), (27, 62492), (30, 62372), (33, 62348), (34, 62339), (36, 62228),

Gene: UAch1_84 Start: 62867, Stop: 62481, Start Num: 21

Candidate Starts for UAch1_84:

(Start: 18 @62903 has 40 MA's), (Start: 21 @62867 has 218 MA's), (Start: 22 @62831 has 1 MA's), (23, 62825), (25, 62810), (27, 62759), (30, 62639), (33, 62615), (34, 62606), (36, 62495),

Gene: UncleHowie_80 Start: 62204, Stop: 61818, Start Num: 21

Candidate Starts for UncleHowie_80:

(Start: 18 @62240 has 40 MA's), (Start: 21 @62204 has 218 MA's), (Start: 22 @62168 has 1 MA's), (23, 62162), (25, 62147), (27, 62096), (30, 61976), (33, 61952), (34, 61943), (36, 61832),

Gene: Usavi_84 Start: 63363, Stop: 62977, Start Num: 21

Candidate Starts for Usavi_84:

(15, 63474), (16, 63468), (Start: 18 @63399 has 40 MA's), (Start: 21 @63363 has 218 MA's), (Start: 22 @63327 has 1 MA's), (23, 63321), (25, 63306), (30, 63135), (33, 63111), (34, 63102), (36, 62991),

Gene: Vaishali24_84 Start: 62973, Stop: 62590, Start Num: 21

Candidate Starts for Vaishali24_84:

(17, 63027), (Start: 18 @63009 has 40 MA's), (Start: 21 @62973 has 218 MA's), (Start: 22 @62937 has 1 MA's), (23, 62931), (25, 62916), (30, 62745), (33, 62721), (34, 62712),

Gene: Valjean_82 Start: 62758, Stop: 62372, Start Num: 21

Candidate Starts for Valjean_82:

(17, 62812), (Start: 18 @62794 has 40 MA's), (Start: 21 @62758 has 218 MA's), (Start: 22 @62722 has 1 MA's), (25, 62701), (30, 62530), (33, 62506), (34, 62497), (36, 62386),

Gene: Vaticameos_80 Start: 61109, Stop: 60687, Start Num: 18

Candidate Starts for Vaticameos_80:

(Start: 18 @61109 has 40 MA's), (Start: 21 @61073 has 218 MA's), (Start: 22 @61037 has 1 MA's), (23, 61031), (25, 61016), (27, 60965), (30, 60845), (33, 60821), (34, 60812), (36, 60701),

Gene: Veritas_82 Start: 62680, Stop: 62294, Start Num: 21

Candidate Starts for Veritas_82:

(15, 62791), (16, 62785), (Start: 18 @62716 has 40 MA's), (Start: 21 @62680 has 218 MA's), (Start: 22 @62644 has 1 MA's), (25, 62623), (27, 62572), (30, 62452), (33, 62428), (34, 62419), (36, 62308),

Gene: Virapocalypse_84 Start: 62866, Stop: 62480, Start Num: 21

Candidate Starts for Virapocalypse_84:

(Start: 18 @62902 has 40 MA's), (Start: 21 @62866 has 218 MA's), (Start: 22 @62830 has 1 MA's), (23, 62824), (25, 62809), (27, 62758), (30, 62638), (33, 62614), (34, 62605), (36, 62494),

Gene: Virgeve_81 Start: 62486, Stop: 62100, Start Num: 21

Candidate Starts for Virgeve_81:

(13, 62642), (Start: 18 @62522 has 40 MA's), (Start: 21 @62486 has 218 MA's), (Start: 22 @62450 has 1 MA's), (23, 62444), (25, 62429), (30, 62258), (33, 62234), (34, 62225), (36, 62114),

Gene: Vista_82 Start: 62679, Stop: 62293, Start Num: 21

Candidate Starts for Vista_82:

(15, 62790), (16, 62784), (Start: 18 @62715 has 40 MA's), (Start: 21 @62679 has 218 MA's), (Start: 22 @62643 has 1 MA's), (25, 62622), (27, 62571), (30, 62451), (33, 62427), (34, 62418), (36, 62307),

Gene: Vivaldi_83 Start: 62944, Stop: 62558, Start Num: 21

Candidate Starts for Vivaldi_83:

(15, 63055), (16, 63049), (Start: 18 @62980 has 40 MA's), (Start: 21 @62944 has 218 MA's), (Start: 22 @62908 has 1 MA's), (25, 62887), (27, 62836), (30, 62716), (33, 62692), (34, 62683), (36, 62572),

Gene: Vortex_82 Start: 62786, Stop: 62400, Start Num: 21

Candidate Starts for Vortex_82:

(Start: 18 @62822 has 40 MA's), (Start: 21 @62786 has 218 MA's), (Start: 22 @62750 has 1 MA's), (23, 62744), (25, 62729), (27, 62678), (30, 62558), (33, 62534), (34, 62525), (36, 62414),

Gene: Wallhey_84 Start: 62786, Stop: 62400, Start Num: 21

Candidate Starts for Wallhey_84:

(15, 62897), (16, 62891), (Start: 18 @62822 has 40 MA's), (Start: 21 @62786 has 218 MA's), (Start: 22 @62750 has 1 MA's), (25, 62729), (27, 62678), (30, 62558), (33, 62534), (34, 62525), (36, 62414),

Gene: Waterdiva_84 Start: 63054, Stop: 62668, Start Num: 21

Candidate Starts for Waterdiva_84:

(Start: 18 @63090 has 40 MA's), (Start: 21 @63054 has 218 MA's), (Start: 22 @63018 has 1 MA's), (23, 63012), (25, 62997), (27, 62946), (30, 62826), (33, 62802), (34, 62793), (36, 62682),

Gene: Weher20_80 Start: 63124, Stop: 62738, Start Num: 21

Candidate Starts for Weher20_80:

(Start: 18 @63160 has 40 MA's), (Start: 21 @63124 has 218 MA's), (Start: 22 @63088 has 1 MA's), (23, 63082), (25, 63067), (27, 63016), (30, 62896), (33, 62872), (34, 62863), (36, 62752),

Gene: Windsor_83 Start: 63069, Stop: 62683, Start Num: 21

Candidate Starts for Windsor_83:

(Start: 18 @63105 has 40 MA's), (Start: 21 @63069 has 218 MA's), (Start: 22 @63033 has 1 MA's), (23, 63027), (25, 63012), (27, 62961), (30, 62841), (33, 62817), (36, 62697),

Gene: Xavier_83 Start: 62678, Stop: 62292, Start Num: 21

Candidate Starts for Xavier_83:

(17, 62732), (Start: 18 @62714 has 40 MA's), (Start: 21 @62678 has 218 MA's), (Start: 22 @62642 has 1 MA's), (25, 62621), (27, 62570), (30, 62450), (33, 62426), (34, 62417), (36, 62306),

Gene: Yoshand_84 Start: 62939, Stop: 62517, Start Num: 18

Candidate Starts for Yoshand_84:

(15, 63014), (16, 63008), (Start: 18 @62939 has 40 MA's), (Start: 21 @62903 has 218 MA's), (Start: 22 @62867 has 1 MA's), (25, 62846), (27, 62795), (30, 62675), (33, 62651), (36, 62531),

Gene: YouGoGlencoco_83 Start: 62794, Stop: 62408, Start Num: 21

Candidate Starts for YouGoGlencoco_83:

(Start: 18 @62830 has 40 MA's), (Start: 21 @62794 has 218 MA's), (Start: 22 @62758 has 1 MA's), (23, 62752), (25, 62737), (27, 62686), (30, 62566), (33, 62542), (34, 62533), (36, 62422),

Gene: Zaider_84 Start: 63168, Stop: 62782, Start Num: 21

Candidate Starts for Zaider_84:

(Start: 18 @63204 has 40 MA's), (Start: 21 @63168 has 218 MA's), (Start: 22 @63132 has 1 MA's), (23, 63126), (25, 63111), (27, 63060), (30, 62940), (33, 62916), (34, 62907), (36, 62796),

Gene: Zelda_83 Start: 63125, Stop: 62739, Start Num: 21

Candidate Starts for Zelda_83:

(Start: 18 @63161 has 40 MA's), (Start: 21 @63125 has 218 MA's), (Start: 22 @63089 has 1 MA's), (23, 63083), (25, 63068), (27, 63017), (30, 62897), (33, 62873), (34, 62864), (36, 62753),

Gene: Zonia_84 Start: 63234, Stop: 62848, Start Num: 21

Candidate Starts for Zonia_84:

(15, 63345), (16, 63339), (Start: 18 @63270 has 40 MA's), (Start: 21 @63234 has 218 MA's), (Start: 22 @63198 has 1 MA's), (25, 63177), (27, 63126), (30, 63006), (33, 62982), (34, 62973), (36, 62862),