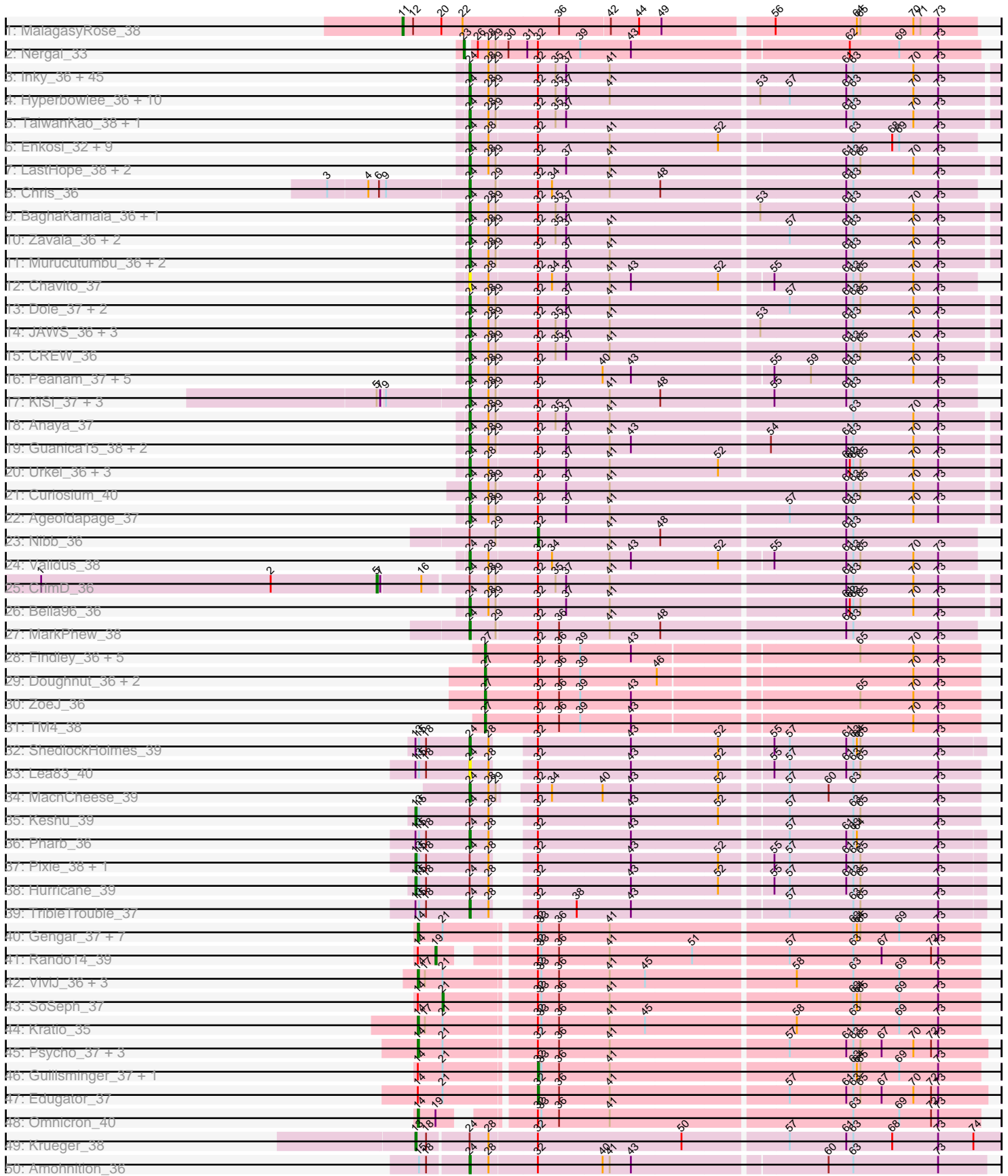
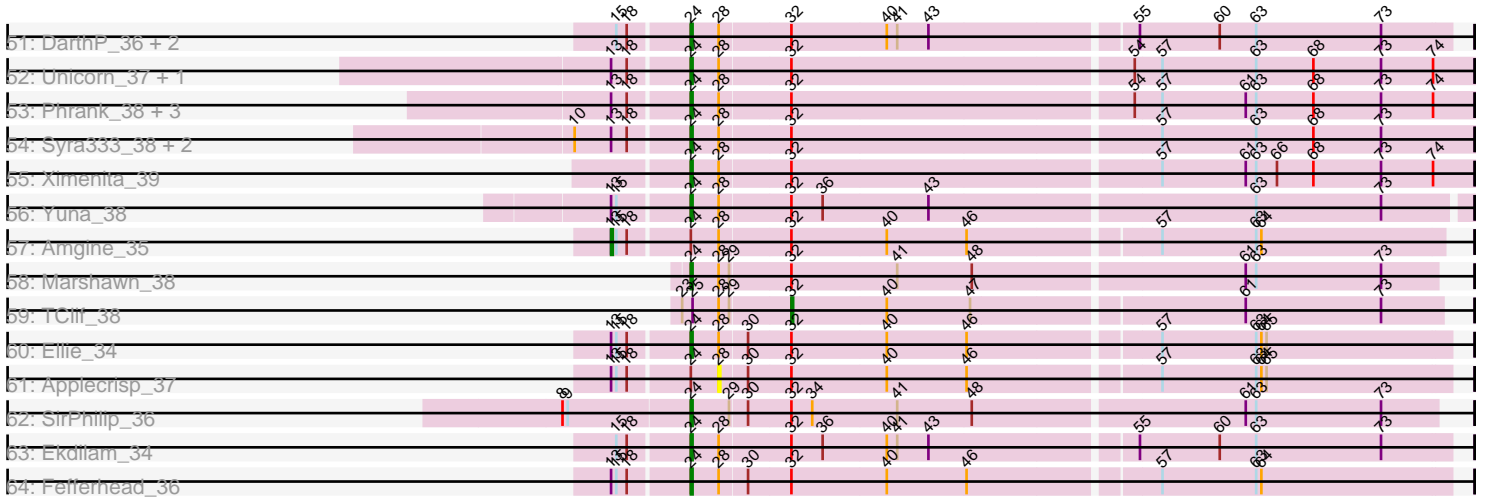


Pham 210837



Pham 210837



Note: Tracks are now grouped by subcluster and scaled. Switching in subcluster is indicated by changes in track color. Track scale is now set by default to display the region 30 bp upstream of start 1 to 30 bp downstream of the last possible start. If this default region is judged to be packed too tightly with annotated starts, the track will be further scaled to only show that region of the ORF with annotated starts. This action will be indicated by adding "Zoomed" to the title. For starts, yellow indicates the location of called starts comprised solely of Glimmer/GeneMark auto-annotations, green indicates the location of called starts with at least 1 manual gene annotation.

Pham 210837 Report

This analysis was run 02/22/25 on database version 588.

Pham number 210837 has 184 members, 17 are drafts.

Phages represented in each track:

- Track 1 : MalagasyRose_38
- Track 2 : Nergal_33
- Track 3 : Inky_36, LindNT_36, Geraldini_36, Spock_36, Rosmarinus_36, QuincyRose_35, Deby_36, Sulley_36, Apocalypse_37, Jayhawk_37, Slimphazie_36, Joy99_36, Belladonna_36, TreyKay_36, BGIlluviae_36, Capricorn_36, Adonis_36, CallaLilly_38, Angelica_36, Tachez_36, HedwigODU_36, Topper_36, Dalmuri_36, Ganymede_37, Jeckyll_36, Twitch_36, Zabiza_36, MeaningOfLife_36, Beezoo_36, Emerson_37, ActinUp_36, Atiba_36, Veliki_36, Pokerus_35, Padpat_37, TruffulaTree_36, Peel_36, Prithvi_36, Lunahalos_36, Llorens_36, BarrelRoll_36, Rapunzel97_36, Adephagia_36, Homura_36, Jarvi_36, YoureAdopted_35
- Track 4 : Hyperbowlee_36, ShiaSurprise_37, BEEST_36, Piatt_36, Padfoot_36, Asayake_36, Durfee_36, AlishaPH_36, CaseJules_37, Blizzard_36, Boiiii_36
- Track 5 : TaiwanKao_38, Megsy_37
- Track 6 : Enkosi_32, Amelie_32, Biglebops_32, SgtBeansprout_32, Torres_32, LilPharaoh_32, Mdavu_32, Nikao_32, Teejan_32, Nutello_32
- Track 7 : LastHope_38, TingHuaYa_37, Bern_38
- Track 8 : Chris_36
- Track 9 : BaghaKamala_36, CheetoDust_36
- Track 10 : Zavala_36, Tiri_37, Mynx_36
- Track 11 : Murucutumbu_36, LaterM_36, Stinson_37
- Track 12 : Chavito_37
- Track 13 : Dole_37, Illumine_37, Devera_38
- Track 14 : JAWS_36, MacKat_37, Ramen_36, Clipper_38
- Track 15 : CREW_36
- Track 16 : Peanam_37, Richo_37, Shaobing_37, Dartin_37, Niklas_37, McMater_37
- Track 17 : KiSi_37, Oscar_37, LeMond_37, Scarlett_37
- Track 18 : Anaya_37
- Track 19 : Guanica15_38, Yunkel11_38, Efra2_38
- Track 20 : Urkel_36, SamuelLPlaqson_36, TiniBug_36, DrHayes_36
- Track 21 : Curiosium_40
- Track 22 : Ageofdapage_37
- Track 23 : Nibb_36
- Track 24 : Validus_38
- Track 25 : CrimD_36
- Track 26 : Bella96_36
- Track 27 : MarkPhew_38

- Track 28 : Findley_36, DismalStressor_36, Strobilo_36, DismalFunk_36, Milly_36, Marcoliusprime_36
- Track 29 : Doughnut_36, Mufasa_36, BoostSeason_36
- Track 30 : ZoeJ_36
- Track 31 : TM4_38
- Track 32 : ShedlockHolmes_39
- Track 33 : Lea83_40
- Track 34 : MacnCheese_39
- Track 35 : Keshu_39
- Track 36 : Pharb_36
- Track 37 : Pixie_38, TBond007_38
- Track 38 : Hurricane_39
- Track 39 : TribbleTrouble_37
- Track 40 : Gengar_37, Paola_37, Feyre_37, OkiRoe_37, Waterfoul_38, Miryou_37, Thyatira_37, Heftyboy_37
- Track 41 : Rando14_39
- Track 42 : ViviJ_36, Collard_36, InvictusManeo_36, Agent47_37
- Track 43 : SoSeph_37
- Track 44 : Kratio_35
- Track 45 : Psycho_37, Dadosky_37, AlleyCat_37, Larva_37
- Track 46 : Guillsminger_37, Leston_37
- Track 47 : Edugator_37
- Track 48 : Omnicron_40
- Track 49 : Krueger_38
- Track 50 : Amohnition_36
- Track 51 : DarthP_36, November_36, Hammy_36
- Track 52 : Unicorn_37, PhelpsODU_37
- Track 53 : Phrank_38, Bryler_38, Tierra_38, Cain_38
- Track 54 : Syra333_38, Sunflower1121_37, Shadow1_37
- Track 55 : Ximenita_39
- Track 56 : Yuna_38
- Track 57 : Amgine_35
- Track 58 : Marshawn_38
- Track 59 : TClif_38
- Track 60 : Ellie_34
- Track 61 : Applecrisp_37
- Track 62 : SirPhilip_36
- Track 63 : Ekdilam_34
- Track 64 : Fefferhead_36

Summary of Final Annotations (See graph section above for start numbers):

The start number called the most often in the published annotations is 24, it was called in 124 of the 167 non-draft genes in the pham.

Genes that call this "Most Annotated" start:

- ActinUp_36, Adephegia_36, Adonis_36, Ageofdapage_37, AlishaPH_36, Amelie_32, Amohnition_36, Anaya_37, Angelica_36, Apocalypse_37, Asayake_36, Atiba_36, BEEST_36, BGlluviae_36, BaghaKamala_36, BarrelRoll_36, Beezoo_36, Bella96_36, Belladonna_36, Bern_38, Binglebops_32, Blizzard_36, Boiiii_36,

Bryler_38, CREW_36, Cain_38, CallaLilly_38, Capricorn_36, CaseJules_37, Chavito_37, CheetoDust_36, Chris_36, Clipper_38, Curiosium_40, Dalmuri_36, DarthP_36, Dartin_37, Deby_36, Devera_38, Dole_37, DrHayes_36, Durfee_36, Efra2_38, Ekdilam_34, Ellie_34, Emerson_37, Enkosi_32, Fefferhead_36, Ganymede_37, Geraldini_36, Guanica15_38, Hammy_36, HedwigODU_36, Homura_36, Hyperbowlee_36, Illumine_37, Inky_36, JAWS_36, Jarvi_36, Jayhawk_37, Jeckyll_36, Joy99_36, KiSi_37, LastHope_38, LaterM_36, LeMond_37, Lea83_40, LilPharaoh_32, LindNT_36, Llorens_36, Lunahalos_36, MacKat_37, MacnCheese_39, MarkPhew_38, Marshawn_38, McMater_37, Mdavu_32, MeaningOfLife_36, Megsy_37, Murucutumbu_36, Mynx_36, Nikao_32, Niklas_37, November_36, Nutello_32, Oscar_37, Padfoot_36, Padpat_37, Peanam_37, Peel_36, Pharb_36, PhelpsODU_37, Phrank_38, Piatt_36, Pokerus_35, Prithvi_36, QuincyRose_35, Ramen_36, Rapunzel97_36, Richo_37, Rosmarinus_36, SamuelLPlaqson_36, Scarlett_37, SgtBeansprout_32, Shadow1_37, Shaobing_37, ShedlockHolmes_39, ShiaSurprise_37, SirPhilip_36, Slimphazie_36, Spock_36, Stinson_37, Sulley_36, Sunflower1121_37, Syra333_38, Tachez_36, TaiwanKao_38, Teejan_32, Tierra_38, TingHuaYa_37, TiniBug_36, Tiri_37, Topper_36, Torres_32, TreyKay_36, TripleTrouble_37, TruffulaTree_36, Twitch_36, Unicorn_37, Urkel_36, Validus_38, Veliki_36, Ximenita_39, YoureAdopted_35, Yuna_38, Yunkel11_38, Zabiza_36, Zavala_36,

Genes that have the "Most Annotated" start but do not call it:

- Amgine_35, Applecrisp_37, CrimD_36, Hurricane_39, Keshu_39, Krueger_38, Nibb_36, Pixie_38, TBond007_38,

Genes that do not have the "Most Annotated" start:

- Agent47_37, AlleyCat_37, BoostSeason_36, Collard_36, Dadosky_37, DismalFunk_36, DismalStressor_36, Doughnut_36, Edugator_37, Feyre_37, Findley_36, Gengar_37, Guillsminger_37, Heftyboy_37, InvictusManeo_36, Kratio_35, Larva_37, Leston_37, MalagasyRose_38, Marcoliusprime_36, Milly_36, Miryou_37, Mufasa_36, Nergal_33, OkiRoe_37, Omnicron_40, Paola_37, Psycho_37, Rando14_39, SoSeph_37, Strobilo_36, TClif_38, TM4_38, Thyatira_37, ViviJ_36, Waterfoul_38, ZoeJ_36,

Summary by start number:

Start 5:

- Found in 5 of 184 (2.7%) of genes in pham
- Manual Annotations of this start: 1 of 167
- Called 20.0% of time when present
- Phage (with cluster) where this start called: CrimD_36 (K1),

Start 11:

- Found in 1 of 184 (0.5%) of genes in pham
- Manual Annotations of this start: 1 of 167
- Called 100.0% of time when present
- Phage (with cluster) where this start called: MalagasyRose_38 (AG),

Start 13:

- Found in 23 of 184 (12.5%) of genes in pham
- Manual Annotations of this start: 6 of 167
- Called 26.1% of time when present

- Phage (with cluster) where this start called: Amgine_35 (K6), Hurricane_39 (K3), Keshu_39 (K3), Krueger_38 (K6), Pixie_38 (K3), TBond007_38 (K3),

Start 14:

- Found in 23 of 184 (12.5%) of genes in pham
- Manual Annotations of this start: 17 of 167
- Called 78.3% of time when present
- Phage (with cluster) where this start called: Agent47_37 (K5), AlleyCat_37 (K5), Collard_36 (K5), Dadosky_37 (K5), Feyre_37 (K5), Gengar_37 (K5), Heftyboy_37 (K5), InvictusManeo_36 (K5), Kratio_35 (K5), Larva_37 (K5), Miryou_37 (K5), OkiRoe_37 (K5), Omnicron_40 (K5), Paola_37 (K5), Psycho_37 (K5), Thyatira_37 (K5), ViviJ_36 (K5), Waterfoul_38 (K5),

Start 19:

- Found in 2 of 184 (1.1%) of genes in pham
- Manual Annotations of this start: 1 of 167
- Called 50.0% of time when present
- Phage (with cluster) where this start called: Rando14_39 (K5),

Start 21:

- Found in 21 of 184 (11.4%) of genes in pham
- Manual Annotations of this start: 1 of 167
- Called 4.8% of time when present
- Phage (with cluster) where this start called: SoSeph_37 (K5),

Start 23:

- Found in 2 of 184 (1.1%) of genes in pham
- Manual Annotations of this start: 1 of 167
- Called 50.0% of time when present
- Phage (with cluster) where this start called: Nergal_33 (AG),

Start 24:

- Found in 147 of 184 (79.9%) of genes in pham
- Manual Annotations of this start: 124 of 167
- Called 93.9% of time when present
- Phage (with cluster) where this start called: ActinUp_36 (K1), Adephegia_36 (K1), Adonis_36 (K1), Ageofdapage_37 (K1), AlishaPH_36 (K1), Amelie_32 (K1), Amohntion_36 (K6), Anaya_37 (K1), Angelica_36 (K1), Apocalypse_37 (K1), Asayake_36 (K1), Atiba_36 (K1), BEEEST_36 (K1), BGIluviae_36 (K1), BaghaKamala_36 (K1), BarrelRoll_36 (K1), Beezoo_36 (K1), Bella96_36 (K1), Belladonna_36 (K1), Bern_38 (K1), Binglebops_32 (K1), Blizzard_36 (K1), Boiiii_36 (K1), Bryler_38 (K6), CREW_36 (K1), Cain_38 (K6), CallaLilly_38 (K1), Capricorn_36 (K1), CaseJules_37 (K1), Chavito_37 (K1), CheetoDust_36 (K1), Chris_36 (K1), Clipper_38 (K1), Curiosium_40 (K1), Dalmuri_36 (K1), DarthP_36 (K6), Dartin_37 (K1), Deby_36 (K1), Devera_38 (K1), Dole_37 (K1), DrHayes_36 (K1), Durfee_36 (K1), Efra2_38 (K1), Ekdilam_34 (K6), Ellie_34 (K6), Emerson_37 (K1), Enkosi_32 (K1), Fefferhead_36 (K6), Ganymede_37 (K1), Geraldini_36 (K1), Guanica15_38 (K1), Hammy_36 (K6), HedwigODU_36 (K1), Homura_36 (K1), Hyperbowlee_36 (K1), Illumine_37 (K1), Inky_36 (K1), JAWS_36 (K1), Jarvi_36 (K1), Jayhawk_37 (K1), Jeckyll_36 (K1), Joy99_36 (K1), KiSi_37 (K1), LastHope_38 (K1), LaterM_36 (K1), LeMond_37 (K1), Lea83_40 (K3), LilPharaoh_32 (K1), LindNT_36 (K1), Llorens_36 (K1), Lunahalos_36 (K1), MacKat_37 (K1), MacnCheese_39 (K3), MarkPhew_38 (K1), Marshawn_38 (K6), McMater_37 (K1), Mdavu_32 (K1),

MeaningOfLife_36 (K1), Megsy_37 (K1), Murucutumbu_36 (K1), Mynx_36 (K1), Nikao_32 (K1), Niklas_37 (K1), November_36 (K6), Nutello_32 (K1), Oscar_37 (K1), Padfoot_36 (K1), Padpat_37 (K1), Peanam_37 (K1), Peel_36 (K1), Pharb_36 (K3), PhelpsODU_37 (K6), Phrank_38 (K6), Piatt_36 (K1), Pokerus_35 (K1), Prithvi_36 (K1), QuincyRose_35 (K1), Ramen_36 (K1), Rapunzel97_36 (K1), Richo_37 (K1), Rosmarinus_36 (K1), SamuelLPlaqson_36 (K1), Scarlett_37 (K1), SgtBeansprout_32 (K1), Shadow1_37 (K6), Shaobing_37 (K1), ShedlockHolmes_39 (K3), ShiaSurprise_37 (K1), SirPhilip_36 (K6), Slimphazie_36 (K1), Spock_36 (K1), Stinson_37 (K1), Sulley_36 (K1), Sunflower1121_37 (K6), Syra333_38 (K6), Tachez_36 (K1), TaiwanKao_38 (K1), Teejan_32 (K1), Tierra_38 (K6), TingHuaYa_37 (K1), TiniBug_36 (K1), Tiri_37 (K1), Topper_36 (K1), Torres_32 (K1), TreyKay_36 (K1), TribbleTrouble_37 (K3), TruffulaTree_36 (K1), Twitch_36 (K1), Unicorn_37 (K6), Urkel_36 (K1), Validus_38 (K1), Veliki_36 (K1), Ximenita_39 (K6), YoureAdopted_35 (K1), Yuna_38 (K6), Yunkel11_38 (K1), Zabiza_36 (K1), Zavala_36 (K1),

Start 27:

- Found in 11 of 184 (6.0%) of genes in pham
- Manual Annotations of this start: 10 of 167
- Called 100.0% of time when present
- Phage (with cluster) where this start called: BoostSeason_36 (K2), DismalFunk_36 (K2), DismalStressor_36 (K2), Doughnut_36 (K2), Findley_36 (K2), Marcoliusprime_36 (K2), Milly_36 (K2), Mufasa_36 (K2), Strobilo_36 (K2), TM4_38 (K2), ZoeJ_36 (K2),

Start 28:

- Found in 145 of 184 (78.8%) of genes in pham
- No Manual Annotations of this start.
- Called 0.7% of time when present
- Phage (with cluster) where this start called: Applecrisp_37 (K6),

Start 32:

- Found in 183 of 184 (99.5%) of genes in pham
- Manual Annotations of this start: 5 of 167
- Called 2.7% of time when present
- Phage (with cluster) where this start called: Edugator_37 (K5), Guillsminger_37 (K5), Leston_37 (K5), Nibb_36 (K1), TClif_38 (K6),

Summary by clusters:

There are 6 clusters represented in this pham: AG, K3, K2, K1, K6, K5,

Info for manual annotations of cluster AG:

- Start number 11 was manually annotated 1 time for cluster AG.
- Start number 23 was manually annotated 1 time for cluster AG.

Info for manual annotations of cluster K1:

- Start number 5 was manually annotated 1 time for cluster K1.
- Start number 24 was manually annotated 101 times for cluster K1.
- Start number 32 was manually annotated 1 time for cluster K1.

Info for manual annotations of cluster K2:

- Start number 27 was manually annotated 10 times for cluster K2.

Info for manual annotations of cluster K3:

- Start number 13 was manually annotated 4 times for cluster K3.
- Start number 24 was manually annotated 4 times for cluster K3.

Info for manual annotations of cluster K5:

- Start number 14 was manually annotated 17 times for cluster K5.
- Start number 19 was manually annotated 1 time for cluster K5.
- Start number 21 was manually annotated 1 time for cluster K5.
- Start number 32 was manually annotated 3 times for cluster K5.

Info for manual annotations of cluster K6:

- Start number 13 was manually annotated 2 times for cluster K6.
- Start number 24 was manually annotated 19 times for cluster K6.
- Start number 32 was manually annotated 1 time for cluster K6.

Gene Information:

Gene: ActinUp_36 Start: 29763, Stop: 30194, Start Num: 24

Candidate Starts for ActinUp_36:

(Start: 24 @29763 has 124 MA's), (28, 29778), (29, 29784), (Start: 32 @29817 has 5 MA's), (35, 29832), (37, 29841), (41, 29877), (61, 30069), (63, 30075), (70, 30126), (73, 30147),

Gene: Adephagia_36 Start: 29760, Stop: 30191, Start Num: 24

Candidate Starts for Adephagia_36:

(Start: 24 @29760 has 124 MA's), (28, 29775), (29, 29781), (Start: 32 @29814 has 5 MA's), (35, 29829), (37, 29838), (41, 29874), (61, 30066), (63, 30072), (70, 30123), (73, 30144),

Gene: Adonis_36 Start: 29775, Stop: 30206, Start Num: 24

Candidate Starts for Adonis_36:

(Start: 24 @29775 has 124 MA's), (28, 29790), (29, 29796), (Start: 32 @29829 has 5 MA's), (35, 29844), (37, 29853), (41, 29889), (61, 30081), (63, 30087), (70, 30138), (73, 30159),

Gene: Agent47_37 Start: 30643, Stop: 31101, Start Num: 14

Candidate Starts for Agent47_37:

(Start: 14 @30643 has 17 MA's), (17, 30649), (Start: 21 @30664 has 1 MA's), (Start: 32 @30736 has 5 MA's), (33, 30739), (36, 30754), (41, 30796), (45, 30826), (58, 30946), (63, 30994), (69, 31033), (73, 31066),

Gene: Ageofdapage_37 Start: 29721, Stop: 30152, Start Num: 24

Candidate Starts for Ageofdapage_37:

(Start: 24 @29721 has 124 MA's), (28, 29736), (29, 29742), (Start: 32 @29775 has 5 MA's), (37, 29799), (41, 29835), (57, 29979), (61, 30027), (63, 30033), (70, 30084), (73, 30105),

Gene: AlishaPH_36 Start: 29753, Stop: 30184, Start Num: 24

Candidate Starts for AlishaPH_36:

(Start: 24 @29753 has 124 MA's), (28, 29768), (29, 29774), (Start: 32 @29807 has 5 MA's), (35, 29822), (37, 29831), (41, 29867), (53, 29987), (57, 30011), (61, 30059), (63, 30065), (70, 30116), (73, 30137),

Gene: AlleyCat_37 Start: 30489, Stop: 30953, Start Num: 14

Candidate Starts for AlleyCat_37:

(Start: 14 @30489 has 17 MA's), (Start: 21 @30510 has 1 MA's), (Start: 32 @30582 has 5 MA's), (36, 30600), (41, 30642), (57, 30786), (61, 30834), (63, 30840), (65, 30846), (67, 30864), (70, 30891), (72, 30906), (73, 30912),

Gene: Amelie_32 Start: 29116, Stop: 29529, Start Num: 24

Candidate Starts for Amelie_32:

(Start: 24 @29116 has 124 MA's), (28, 29131), (Start: 32 @29170 has 5 MA's), (41, 29230), (52, 29320), (63, 29425), (68, 29458), (69, 29464), (73, 29497),

Gene: Amgine_35 Start: 29864, Stop: 30322, Start Num: 13

Candidate Starts for Amgine_35:

(Start: 13 @29864 has 6 MA's), (15, 29867), (18, 29873), (Start: 24 @29906 has 124 MA's), (28, 29921), (Start: 32 @29960 has 5 MA's), (40, 30014), (46, 30059), (57, 30161), (63, 30215), (64, 30218),

Gene: Amohnition_36 Start: 30303, Stop: 30722, Start Num: 24

Candidate Starts for Amohnition_36:

(15, 30264), (18, 30270), (Start: 24 @30303 has 124 MA's), (28, 30318), (Start: 32 @30357 has 5 MA's), (40, 30411), (41, 30417), (43, 30435), (60, 30591), (63, 30612), (73, 30684),

Gene: Anaya_37 Start: 29788, Stop: 30219, Start Num: 24

Candidate Starts for Anaya_37:

(Start: 24 @29788 has 124 MA's), (28, 29803), (29, 29809), (Start: 32 @29842 has 5 MA's), (35, 29857), (37, 29866), (41, 29902), (63, 30100), (70, 30151), (73, 30172),

Gene: Angelica_36 Start: 29710, Stop: 30141, Start Num: 24

Candidate Starts for Angelica_36:

(Start: 24 @29710 has 124 MA's), (28, 29725), (29, 29731), (Start: 32 @29764 has 5 MA's), (35, 29779), (37, 29788), (41, 29824), (61, 30016), (63, 30022), (70, 30073), (73, 30094),

Gene: Apocalypse_37 Start: 29731, Stop: 30162, Start Num: 24

Candidate Starts for Apocalypse_37:

(Start: 24 @29731 has 124 MA's), (28, 29746), (29, 29752), (Start: 32 @29785 has 5 MA's), (35, 29800), (37, 29809), (41, 29845), (61, 30037), (63, 30043), (70, 30094), (73, 30115),

Gene: Applecrisp_37 Start: 30343, Stop: 30747, Start Num: 28

Candidate Starts for Applecrisp_37:

(Start: 13 @30286 has 6 MA's), (15, 30289), (18, 30295), (Start: 24 @30328 has 124 MA's), (28, 30343), (30, 30358), (Start: 32 @30382 has 5 MA's), (40, 30436), (46, 30481), (57, 30583), (63, 30637), (64, 30640), (65, 30643),

Gene: Asayake_36 Start: 29794, Stop: 30225, Start Num: 24

Candidate Starts for Asayake_36:

(Start: 24 @29794 has 124 MA's), (28, 29809), (29, 29815), (Start: 32 @29848 has 5 MA's), (35, 29863), (37, 29872), (41, 29908), (53, 30028), (57, 30052), (61, 30100), (63, 30106), (70, 30157), (73, 30178),

Gene: Atiba_36 Start: 29723, Stop: 30154, Start Num: 24

Candidate Starts for Atiba_36:

(Start: 24 @29723 has 124 MA's), (28, 29738), (29, 29744), (Start: 32 @29777 has 5 MA's), (35, 29792), (37, 29801), (41, 29837), (61, 30029), (63, 30035), (70, 30086), (73, 30107),

Gene: BEEST_36 Start: 29794, Stop: 30225, Start Num: 24

Candidate Starts for BEEST_36:

(Start: 24 @29794 has 124 MA's), (28, 29809), (29, 29815), (Start: 32 @29848 has 5 MA's), (35, 29863), (37, 29872), (41, 29908), (53, 30028), (57, 30052), (61, 30100), (63, 30106), (70, 30157), (73, 30178),

Gene: BGlluviae_36 Start: 29794, Stop: 30225, Start Num: 24

Candidate Starts for BGlluviae_36:

(Start: 24 @29794 has 124 MA's), (28, 29809), (29, 29815), (Start: 32 @29848 has 5 MA's), (35, 29863), (37, 29872), (41, 29908), (61, 30100), (63, 30106), (70, 30157), (73, 30178),

Gene: BaghaKamala_36 Start: 29723, Stop: 30154, Start Num: 24

Candidate Starts for BaghaKamala_36:

(Start: 24 @29723 has 124 MA's), (28, 29738), (29, 29744), (Start: 32 @29777 has 5 MA's), (35, 29792), (37, 29801), (53, 29957), (61, 30029), (63, 30035), (70, 30086), (73, 30107),

Gene: BarrelRoll_36 Start: 29746, Stop: 30177, Start Num: 24

Candidate Starts for BarrelRoll_36:

(Start: 24 @29746 has 124 MA's), (28, 29761), (29, 29767), (Start: 32 @29800 has 5 MA's), (35, 29815), (37, 29824), (41, 29860), (61, 30052), (63, 30058), (70, 30109), (73, 30130),

Gene: Beezoo_36 Start: 29770, Stop: 30201, Start Num: 24

Candidate Starts for Beezoo_36:

(Start: 24 @29770 has 124 MA's), (28, 29785), (29, 29791), (Start: 32 @29824 has 5 MA's), (35, 29839), (37, 29848), (41, 29884), (61, 30076), (63, 30082), (70, 30133), (73, 30154),

Gene: Bella96_36 Start: 29663, Stop: 30094, Start Num: 24

Candidate Starts for Bella96_36:

(Start: 24 @29663 has 124 MA's), (28, 29678), (29, 29684), (Start: 32 @29717 has 5 MA's), (37, 29741), (41, 29777), (61, 29969), (62, 29972), (63, 29975), (65, 29981), (70, 30026), (73, 30047),

Gene: Belladonna_36 Start: 29794, Stop: 30225, Start Num: 24

Candidate Starts for Belladonna_36:

(Start: 24 @29794 has 124 MA's), (28, 29809), (29, 29815), (Start: 32 @29848 has 5 MA's), (35, 29863), (37, 29872), (41, 29908), (61, 30100), (63, 30106), (70, 30157), (73, 30178),

Gene: Bern_38 Start: 29702, Stop: 30133, Start Num: 24

Candidate Starts for Bern_38:

(Start: 24 @29702 has 124 MA's), (28, 29717), (29, 29723), (Start: 32 @29756 has 5 MA's), (37, 29780), (41, 29816), (61, 30008), (63, 30014), (65, 30020), (70, 30065), (73, 30086),

Gene: Biglebops_32 Start: 29116, Stop: 29529, Start Num: 24

Candidate Starts for Biglebops_32:

(Start: 24 @29116 has 124 MA's), (28, 29131), (Start: 32 @29170 has 5 MA's), (41, 29230), (52, 29320), (63, 29425), (68, 29458), (69, 29464), (73, 29497),

Gene: Blizzard_36 Start: 29794, Stop: 30225, Start Num: 24

Candidate Starts for Blizzard_36:

(Start: 24 @29794 has 124 MA's), (28, 29809), (29, 29815), (Start: 32 @29848 has 5 MA's), (35, 29863), (37, 29872), (41, 29908), (53, 30028), (57, 30052), (61, 30100), (63, 30106), (70, 30157), (73, 30178),

Gene: Boiiii_36 Start: 29796, Stop: 30227, Start Num: 24

Candidate Starts for Boiii_36:

(Start: 24 @29796 has 124 MA's), (28, 29811), (29, 29817), (Start: 32 @29850 has 5 MA's), (35, 29865), (37, 29874), (41, 29910), (53, 30030), (57, 30054), (61, 30102), (63, 30108), (70, 30159), (73, 30180),

Gene: BoostSeason_36 Start: 29094, Stop: 29498, Start Num: 27

Candidate Starts for BoostSeason_36:

(Start: 27 @29094 has 10 MA's), (Start: 32 @29139 has 5 MA's), (36, 29157), (39, 29175), (46, 29238), (70, 29442), (73, 29463),

Gene: Bryler_38 Start: 29452, Stop: 29889, Start Num: 24

Candidate Starts for Bryler_38:

(Start: 13 @29410 has 6 MA's), (18, 29419), (Start: 24 @29452 has 124 MA's), (28, 29467), (Start: 32 @29506 has 5 MA's), (54, 29695), (57, 29710), (61, 29758), (63, 29764), (68, 29797), (73, 29836), (74, 29866),

Gene: CREW_36 Start: 29794, Stop: 30225, Start Num: 24

Candidate Starts for CREW_36:

(Start: 24 @29794 has 124 MA's), (28, 29809), (29, 29815), (Start: 32 @29848 has 5 MA's), (35, 29863), (37, 29872), (41, 29908), (61, 30100), (63, 30106), (65, 30112), (70, 30157), (73, 30178),

Gene: Cain_38 Start: 29440, Stop: 29877, Start Num: 24

Candidate Starts for Cain_38:

(Start: 13 @29398 has 6 MA's), (18, 29407), (Start: 24 @29440 has 124 MA's), (28, 29455), (Start: 32 @29494 has 5 MA's), (54, 29683), (57, 29698), (61, 29746), (63, 29752), (68, 29785), (73, 29824), (74, 29854),

Gene: CallaLilly_38 Start: 29717, Stop: 30148, Start Num: 24

Candidate Starts for CallaLilly_38:

(Start: 24 @29717 has 124 MA's), (28, 29732), (29, 29738), (Start: 32 @29771 has 5 MA's), (35, 29786), (37, 29795), (41, 29831), (61, 30023), (63, 30029), (70, 30080), (73, 30101),

Gene: Capricorn_36 Start: 29794, Stop: 30225, Start Num: 24

Candidate Starts for Capricorn_36:

(Start: 24 @29794 has 124 MA's), (28, 29809), (29, 29815), (Start: 32 @29848 has 5 MA's), (35, 29863), (37, 29872), (41, 29908), (61, 30100), (63, 30106), (70, 30157), (73, 30178),

Gene: CaseJules_37 Start: 29794, Stop: 30225, Start Num: 24

Candidate Starts for CaseJules_37:

(Start: 24 @29794 has 124 MA's), (28, 29809), (29, 29815), (Start: 32 @29848 has 5 MA's), (35, 29863), (37, 29872), (41, 29908), (53, 30028), (57, 30052), (61, 30100), (63, 30106), (70, 30157), (73, 30178),

Gene: Chavito_37 Start: 29536, Stop: 29949, Start Num: 24

Candidate Starts for Chavito_37:

(Start: 24 @29536 has 124 MA's), (28, 29551), (Start: 32 @29590 has 5 MA's), (34, 29602), (37, 29614), (41, 29650), (43, 29668), (52, 29740), (55, 29779), (61, 29839), (63, 29845), (65, 29851), (70, 29896), (73, 29917),

Gene: CheetoDust_36 Start: 29771, Stop: 30202, Start Num: 24

Candidate Starts for CheetoDust_36:

(Start: 24 @29771 has 124 MA's), (28, 29786), (29, 29792), (Start: 32 @29825 has 5 MA's), (35, 29840), (37, 29849), (53, 30005), (61, 30077), (63, 30083), (70, 30134), (73, 30155),

Gene: Chris_36 Start: 29430, Stop: 29846, Start Num: 24

Candidate Starts for Chris_36:

(3, 29313), (4, 29346), (6, 29355), (9, 29361), (Start: 24 @29430 has 124 MA's), (29, 29451), (Start: 32 @29484 has 5 MA's), (34, 29496), (41, 29544), (48, 29586), (61, 29736), (63, 29742), (73, 29814),

Gene: Clipper_38 Start: 29771, Stop: 30202, Start Num: 24

Candidate Starts for Clipper_38:

(Start: 24 @29771 has 124 MA's), (28, 29786), (29, 29792), (Start: 32 @29825 has 5 MA's), (35, 29840), (37, 29849), (41, 29885), (53, 30005), (61, 30077), (63, 30083), (70, 30134), (73, 30155),

Gene: Collard_36 Start: 30604, Stop: 31062, Start Num: 14

Candidate Starts for Collard_36:

(Start: 14 @30604 has 17 MA's), (17, 30610), (Start: 21 @30625 has 1 MA's), (Start: 32 @30697 has 5 MA's), (33, 30700), (36, 30715), (41, 30757), (45, 30787), (58, 30907), (63, 30955), (69, 30994), (73, 31027),

Gene: CrimD_36 Start: 29657, Stop: 30160, Start Num: 5

Candidate Starts for CrimD_36:

(1, 29372), (2, 29567), (Start: 5 @29657 has 1 MA's), (7, 29660), (16, 29693), (Start: 24 @29729 has 124 MA's), (28, 29744), (29, 29750), (Start: 32 @29783 has 5 MA's), (35, 29798), (37, 29807), (41, 29843), (61, 30035), (63, 30041), (70, 30092), (73, 30113),

Gene: Curiosium_40 Start: 29997, Stop: 30434, Start Num: 24

Candidate Starts for Curiosium_40:

(Start: 24 @29997 has 124 MA's), (28, 30012), (29, 30018), (Start: 32 @30051 has 5 MA's), (37, 30075), (41, 30111), (61, 30309), (63, 30315), (65, 30321), (70, 30366), (73, 30387),

Gene: Dadosky_37 Start: 30491, Stop: 30955, Start Num: 14

Candidate Starts for Dadosky_37:

(Start: 14 @30491 has 17 MA's), (Start: 21 @30512 has 1 MA's), (Start: 32 @30584 has 5 MA's), (36, 30602), (41, 30644), (57, 30788), (61, 30836), (63, 30842), (65, 30848), (67, 30866), (70, 30893), (72, 30908), (73, 30914),

Gene: Dalmuri_36 Start: 29794, Stop: 30225, Start Num: 24

Candidate Starts for Dalmuri_36:

(Start: 24 @29794 has 124 MA's), (28, 29809), (29, 29815), (Start: 32 @29848 has 5 MA's), (35, 29863), (37, 29872), (41, 29908), (61, 30100), (63, 30106), (70, 30157), (73, 30178),

Gene: DarthP_36 Start: 30225, Stop: 30644, Start Num: 24

Candidate Starts for DarthP_36:

(15, 30186), (18, 30192), (Start: 24 @30225 has 124 MA's), (28, 30240), (Start: 32 @30279 has 5 MA's), (40, 30333), (41, 30339), (43, 30357), (55, 30468), (60, 30513), (63, 30534), (73, 30606),

Gene: Dartin_37 Start: 29224, Stop: 29637, Start Num: 24

Candidate Starts for Dartin_37:

(Start: 24 @29224 has 124 MA's), (28, 29239), (29, 29245), (Start: 32 @29278 has 5 MA's), (40, 29332), (43, 29356), (55, 29467), (59, 29497), (61, 29527), (63, 29533), (70, 29584), (73, 29605),

Gene: Deby_36 Start: 29728, Stop: 30159, Start Num: 24

Candidate Starts for Deby_36:

(Start: 24 @29728 has 124 MA's), (28, 29743), (29, 29749), (Start: 32 @29782 has 5 MA's), (35, 29797), (37, 29806), (41, 29842), (61, 30034), (63, 30040), (70, 30091), (73, 30112),

Gene: Devera_38 Start: 29919, Stop: 30350, Start Num: 24

Candidate Starts for Devera_38:

(Start: 24 @29919 has 124 MA's), (28, 29934), (29, 29940), (Start: 32 @29973 has 5 MA's), (37, 29997), (41, 30033), (57, 30177), (61, 30225), (63, 30231), (65, 30237), (70, 30282), (73, 30303),

Gene: DismalFunk_36 Start: 29437, Stop: 29841, Start Num: 27

Candidate Starts for DismalFunk_36:

(Start: 27 @29437 has 10 MA's), (Start: 32 @29482 has 5 MA's), (36, 29500), (39, 29518), (43, 29560), (65, 29740), (70, 29785), (73, 29806),

Gene: DismalStressor_36 Start: 29437, Stop: 29841, Start Num: 27

Candidate Starts for DismalStressor_36:

(Start: 27 @29437 has 10 MA's), (Start: 32 @29482 has 5 MA's), (36, 29500), (39, 29518), (43, 29560), (65, 29740), (70, 29785), (73, 29806),

Gene: Dole_37 Start: 29921, Stop: 30352, Start Num: 24

Candidate Starts for Dole_37:

(Start: 24 @29921 has 124 MA's), (28, 29936), (29, 29942), (Start: 32 @29975 has 5 MA's), (37, 29999), (41, 30035), (57, 30179), (61, 30227), (63, 30233), (65, 30239), (70, 30284), (73, 30305),

Gene: Doughnut_36 Start: 29087, Stop: 29491, Start Num: 27

Candidate Starts for Doughnut_36:

(Start: 27 @29087 has 10 MA's), (Start: 32 @29132 has 5 MA's), (36, 29150), (39, 29168), (46, 29231), (70, 29435), (73, 29456),

Gene: DrHayes_36 Start: 29703, Stop: 30134, Start Num: 24

Candidate Starts for DrHayes_36:

(Start: 24 @29703 has 124 MA's), (28, 29718), (Start: 32 @29757 has 5 MA's), (37, 29781), (41, 29817), (52, 29907), (61, 30009), (62, 30012), (63, 30015), (65, 30021), (70, 30066), (73, 30087),

Gene: Durfee_36 Start: 29794, Stop: 30225, Start Num: 24

Candidate Starts for Durfee_36:

(Start: 24 @29794 has 124 MA's), (28, 29809), (29, 29815), (Start: 32 @29848 has 5 MA's), (35, 29863), (37, 29872), (41, 29908), (53, 30028), (57, 30052), (61, 30100), (63, 30106), (70, 30157), (73, 30178),

Gene: Edugator_37 Start: 31009, Stop: 31380, Start Num: 32

Candidate Starts for Edugator_37:

(Start: 14 @30916 has 17 MA's), (Start: 21 @30937 has 1 MA's), (Start: 32 @31009 has 5 MA's), (36, 31027), (41, 31069), (57, 31213), (61, 31261), (63, 31267), (65, 31273), (67, 31291), (70, 31318), (72, 31333), (73, 31339),

Gene: Efra2_38 Start: 29443, Stop: 29874, Start Num: 24

Candidate Starts for Efra2_38:

(Start: 24 @29443 has 124 MA's), (28, 29458), (29, 29464), (Start: 32 @29497 has 5 MA's), (37, 29521), (41, 29557), (43, 29575), (54, 29686), (61, 29749), (63, 29755), (70, 29806), (73, 29827),

Gene: Ekdilam_34 Start: 29980, Stop: 30399, Start Num: 24

Candidate Starts for Ekdilam_34:

(15, 29941), (18, 29947), (Start: 24 @29980 has 124 MA's), (28, 29995), (Start: 32 @30034 has 5 MA's), (36, 30052), (40, 30088), (41, 30094), (43, 30112), (55, 30223), (60, 30268), (63, 30289), (73, 30361),

Gene: Ellie_34 Start: 30019, Stop: 30438, Start Num: 24

Candidate Starts for Ellie_34:

(Start: 13 @29977 has 6 MA's), (15, 29980), (18, 29986), (Start: 24 @30019 has 124 MA's), (28, 30034), (30, 30049), (Start: 32 @30073 has 5 MA's), (40, 30127), (46, 30172), (57, 30274), (63, 30328), (64, 30331), (65, 30334),

Gene: Emerson_37 Start: 29754, Stop: 30185, Start Num: 24

Candidate Starts for Emerson_37:

(Start: 24 @29754 has 124 MA's), (28, 29769), (29, 29775), (Start: 32 @29808 has 5 MA's), (35, 29823), (37, 29832), (41, 29868), (61, 30060), (63, 30066), (70, 30117), (73, 30138),

Gene: Enkosi_32 Start: 29116, Stop: 29529, Start Num: 24

Candidate Starts for Enkosi_32:

(Start: 24 @29116 has 124 MA's), (28, 29131), (Start: 32 @29170 has 5 MA's), (41, 29230), (52, 29320), (63, 29425), (68, 29458), (69, 29464), (73, 29497),

Gene: Fefferhead_36 Start: 30219, Stop: 30638, Start Num: 24

Candidate Starts for Fefferhead_36:

(Start: 13 @30177 has 6 MA's), (15, 30180), (18, 30186), (Start: 24 @30219 has 124 MA's), (28, 30234), (30, 30249), (Start: 32 @30273 has 5 MA's), (40, 30327), (46, 30372), (57, 30474), (63, 30528), (64, 30531),

Gene: Feyre_37 Start: 30555, Stop: 31013, Start Num: 14

Candidate Starts for Feyre_37:

(Start: 14 @30555 has 17 MA's), (Start: 21 @30576 has 1 MA's), (Start: 32 @30648 has 5 MA's), (33, 30651), (36, 30666), (41, 30708), (63, 30906), (64, 30909), (65, 30912), (69, 30945), (73, 30978),

Gene: Findley_36 Start: 29430, Stop: 29834, Start Num: 27

Candidate Starts for Findley_36:

(Start: 27 @29430 has 10 MA's), (Start: 32 @29475 has 5 MA's), (36, 29493), (39, 29511), (43, 29553), (65, 29733), (70, 29778), (73, 29799),

Gene: Ganymede_37 Start: 29783, Stop: 30214, Start Num: 24

Candidate Starts for Ganymede_37:

(Start: 24 @29783 has 124 MA's), (28, 29798), (29, 29804), (Start: 32 @29837 has 5 MA's), (35, 29852), (37, 29861), (41, 29897), (61, 30089), (63, 30095), (70, 30146), (73, 30167),

Gene: Gengar_37 Start: 30665, Stop: 31123, Start Num: 14

Candidate Starts for Gengar_37:

(Start: 14 @30665 has 17 MA's), (Start: 21 @30686 has 1 MA's), (Start: 32 @30758 has 5 MA's), (33, 30761), (36, 30776), (41, 30818), (63, 31016), (64, 31019), (65, 31022), (69, 31055), (73, 31088),

Gene: Geraldini_36 Start: 29770, Stop: 30201, Start Num: 24

Candidate Starts for Geraldini_36:

(Start: 24 @29770 has 124 MA's), (28, 29785), (29, 29791), (Start: 32 @29824 has 5 MA's), (35, 29839), (37, 29848), (41, 29884), (61, 30076), (63, 30082), (70, 30133), (73, 30154),

Gene: Guanica15_38 Start: 29399, Stop: 29830, Start Num: 24

Candidate Starts for Guanica15_38:

(Start: 24 @29399 has 124 MA's), (28, 29414), (29, 29420), (Start: 32 @29453 has 5 MA's), (37, 29477), (41, 29513), (43, 29531), (54, 29642), (61, 29705), (63, 29711), (70, 29762), (73, 29783),

Gene: Guillsminger_37 Start: 30729, Stop: 31094, Start Num: 32

Candidate Starts for Guillsminger_37:

(Start: 14 @30636 has 17 MA's), (Start: 21 @30657 has 1 MA's), (Start: 32 @30729 has 5 MA's), (33, 30732), (36, 30747), (41, 30789), (63, 30987), (64, 30990), (65, 30993), (69, 31026), (73, 31059),

Gene: Hammy_36 Start: 30216, Stop: 30635, Start Num: 24

Candidate Starts for Hammy_36:

(15, 30177), (18, 30183), (Start: 24 @30216 has 124 MA's), (28, 30231), (Start: 32 @30270 has 5 MA's), (40, 30324), (41, 30330), (43, 30348), (55, 30459), (60, 30504), (63, 30525), (73, 30597),

Gene: HedwigODU_36 Start: 29763, Stop: 30194, Start Num: 24

Candidate Starts for HedwigODU_36:

(Start: 24 @29763 has 124 MA's), (28, 29778), (29, 29784), (Start: 32 @29817 has 5 MA's), (35, 29832), (37, 29841), (41, 29877), (61, 30069), (63, 30075), (70, 30126), (73, 30147),

Gene: Heftyboy_37 Start: 30782, Stop: 31240, Start Num: 14

Candidate Starts for Heftyboy_37:

(Start: 14 @30782 has 17 MA's), (Start: 21 @30803 has 1 MA's), (Start: 32 @30875 has 5 MA's), (33, 30878), (36, 30893), (41, 30935), (63, 31133), (64, 31136), (65, 31139), (69, 31172), (73, 31205),

Gene: Homura_36 Start: 29794, Stop: 30225, Start Num: 24

Candidate Starts for Homura_36:

(Start: 24 @29794 has 124 MA's), (28, 29809), (29, 29815), (Start: 32 @29848 has 5 MA's), (35, 29863), (37, 29872), (41, 29908), (61, 30100), (63, 30106), (70, 30157), (73, 30178),

Gene: Hurricane_39 Start: 30950, Stop: 31390, Start Num: 13

Candidate Starts for Hurricane_39:

(Start: 13 @30950 has 6 MA's), (15, 30953), (18, 30959), (Start: 24 @30995 has 124 MA's), (28, 31010), (Start: 32 @31025 has 5 MA's), (43, 31103), (52, 31175), (55, 31214), (57, 31226), (61, 31274), (63, 31280), (65, 31286), (73, 31352),

Gene: Hyperbowlee_36 Start: 29794, Stop: 30225, Start Num: 24

Candidate Starts for Hyperbowlee_36:

(Start: 24 @29794 has 124 MA's), (28, 29809), (29, 29815), (Start: 32 @29848 has 5 MA's), (35, 29863), (37, 29872), (41, 29908), (53, 30028), (57, 30052), (61, 30100), (63, 30106), (70, 30157), (73, 30178),

Gene: Illumine_37 Start: 29921, Stop: 30352, Start Num: 24

Candidate Starts for Illumine_37:

(Start: 24 @29921 has 124 MA's), (28, 29936), (29, 29942), (Start: 32 @29975 has 5 MA's), (37, 29999), (41, 30035), (57, 30179), (61, 30227), (63, 30233), (65, 30239), (70, 30284), (73, 30305),

Gene: Inky_36 Start: 29794, Stop: 30225, Start Num: 24

Candidate Starts for Inky_36:

(Start: 24 @29794 has 124 MA's), (28, 29809), (29, 29815), (Start: 32 @29848 has 5 MA's), (35, 29863), (37, 29872), (41, 29908), (61, 30100), (63, 30106), (70, 30157), (73, 30178),

Gene: InvictusManeo_36 Start: 30647, Stop: 31105, Start Num: 14

Candidate Starts for InvictusManeo_36:

(Start: 14 @30647 has 17 MA's), (17, 30653), (Start: 21 @30668 has 1 MA's), (Start: 32 @30740 has 5 MA's), (33, 30743), (36, 30758), (41, 30800), (45, 30830), (58, 30950), (63, 30998), (69, 31037), (73, 31070),

Gene: JAWS_36 Start: 29747, Stop: 30178, Start Num: 24

Candidate Starts for JAWS_36:

(Start: 24 @29747 has 124 MA's), (28, 29762), (29, 29768), (Start: 32 @29801 has 5 MA's), (35, 29816), (37, 29825), (41, 29861), (53, 29981), (61, 30053), (63, 30059), (70, 30110), (73, 30131),

Gene: Jarvi_36 Start: 29794, Stop: 30225, Start Num: 24

Candidate Starts for Jarvi_36:

(Start: 24 @29794 has 124 MA's), (28, 29809), (29, 29815), (Start: 32 @29848 has 5 MA's), (35, 29863), (37, 29872), (41, 29908), (61, 30100), (63, 30106), (70, 30157), (73, 30178),

Gene: Jayhawk_37 Start: 29761, Stop: 30192, Start Num: 24

Candidate Starts for Jayhawk_37:

(Start: 24 @29761 has 124 MA's), (28, 29776), (29, 29782), (Start: 32 @29815 has 5 MA's), (35, 29830), (37, 29839), (41, 29875), (61, 30067), (63, 30073), (70, 30124), (73, 30145),

Gene: Jeckyll_36 Start: 29794, Stop: 30225, Start Num: 24

Candidate Starts for Jeckyll_36:

(Start: 24 @29794 has 124 MA's), (28, 29809), (29, 29815), (Start: 32 @29848 has 5 MA's), (35, 29863), (37, 29872), (41, 29908), (61, 30100), (63, 30106), (70, 30157), (73, 30178),

Gene: Joy99_36 Start: 29723, Stop: 30154, Start Num: 24

Candidate Starts for Joy99_36:

(Start: 24 @29723 has 124 MA's), (28, 29738), (29, 29744), (Start: 32 @29777 has 5 MA's), (35, 29792), (37, 29801), (41, 29837), (61, 30029), (63, 30035), (70, 30086), (73, 30107),

Gene: Keshu_39 Start: 30941, Stop: 31378, Start Num: 13

Candidate Starts for Keshu_39:

(Start: 13 @30941 has 6 MA's), (15, 30944), (Start: 24 @30986 has 124 MA's), (28, 31001), (Start: 32 @31016 has 5 MA's), (43, 31094), (52, 31166), (57, 31217), (63, 31271), (65, 31277), (73, 31343),

Gene: KiSi_37 Start: 29539, Stop: 29955, Start Num: 24

Candidate Starts for KiSi_37:

(Start: 5 @29464 has 1 MA's), (7, 29467), (9, 29470), (Start: 24 @29539 has 124 MA's), (28, 29554), (29, 29560), (Start: 32 @29593 has 5 MA's), (41, 29653), (48, 29695), (55, 29785), (61, 29845), (63, 29851), (73, 29923),

Gene: Kratio_35 Start: 30195, Stop: 30653, Start Num: 14

Candidate Starts for Kratio_35:

(Start: 14 @30195 has 17 MA's), (17, 30201), (Start: 21 @30216 has 1 MA's), (Start: 32 @30288 has 5 MA's), (33, 30291), (36, 30306), (41, 30348), (45, 30378), (58, 30498), (63, 30546), (69, 30585), (73, 30618),

Gene: Krueger_38 Start: 29243, Stop: 29722, Start Num: 13

Candidate Starts for Krueger_38:

(Start: 13 @29243 has 6 MA's), (18, 29252), (Start: 24 @29285 has 124 MA's), (28, 29300), (Start: 32 @29339 has 5 MA's), (50, 29459), (57, 29543), (61, 29591), (63, 29597), (68, 29630), (73, 29669), (74, 29699),

Gene: Larva_37 Start: 30358, Stop: 30822, Start Num: 14

Candidate Starts for Larva_37:

(Start: 14 @30358 has 17 MA's), (Start: 21 @30379 has 1 MA's), (Start: 32 @30451 has 5 MA's), (36, 30469), (41, 30511), (57, 30655), (61, 30703), (63, 30709), (65, 30715), (67, 30733), (70, 30760), (72, 30775), (73, 30781),

Gene: LastHope_38 Start: 29285, Stop: 29716, Start Num: 24

Candidate Starts for LastHope_38:

(Start: 24 @29285 has 124 MA's), (28, 29300), (29, 29306), (Start: 32 @29339 has 5 MA's), (37, 29363), (41, 29399), (61, 29591), (63, 29597), (65, 29603), (70, 29648), (73, 29669),

Gene: LaterM_36 Start: 29708, Stop: 30139, Start Num: 24

Candidate Starts for LaterM_36:

(Start: 24 @29708 has 124 MA's), (28, 29723), (29, 29729), (Start: 32 @29762 has 5 MA's), (37, 29786), (41, 29822), (61, 30014), (63, 30020), (70, 30071), (73, 30092),

Gene: LeMond_37 Start: 29610, Stop: 30026, Start Num: 24

Candidate Starts for LeMond_37:

(Start: 5 @29535 has 1 MA's), (7, 29538), (9, 29541), (Start: 24 @29610 has 124 MA's), (28, 29625), (29, 29631), (Start: 32 @29664 has 5 MA's), (41, 29724), (48, 29766), (55, 29856), (61, 29916), (63, 29922), (73, 29994),

Gene: Lea83_40 Start: 31068, Stop: 31460, Start Num: 24

Candidate Starts for Lea83_40:

(Start: 13 @31023 has 6 MA's), (15, 31026), (18, 31032), (Start: 24 @31068 has 124 MA's), (28, 31083), (Start: 32 @31098 has 5 MA's), (43, 31176), (52, 31248), (55, 31287), (57, 31299), (61, 31347), (63, 31353), (65, 31359), (73, 31425),

Gene: Leston_37 Start: 30859, Stop: 31224, Start Num: 32

Candidate Starts for Leston_37:

(Start: 14 @30766 has 17 MA's), (Start: 21 @30787 has 1 MA's), (Start: 32 @30859 has 5 MA's), (33, 30862), (36, 30877), (41, 30919), (63, 31117), (64, 31120), (65, 31123), (69, 31156), (73, 31189),

Gene: LilPharaoh_32 Start: 29116, Stop: 29529, Start Num: 24

Candidate Starts for LilPharaoh_32:

(Start: 24 @29116 has 124 MA's), (28, 29131), (Start: 32 @29170 has 5 MA's), (41, 29230), (52, 29320), (63, 29425), (68, 29458), (69, 29464), (73, 29497),

Gene: LindNT_36 Start: 29724, Stop: 30155, Start Num: 24

Candidate Starts for LindNT_36:

(Start: 24 @29724 has 124 MA's), (28, 29739), (29, 29745), (Start: 32 @29778 has 5 MA's), (35, 29793), (37, 29802), (41, 29838), (61, 30030), (63, 30036), (70, 30087), (73, 30108),

Gene: Llorens_36 Start: 29794, Stop: 30225, Start Num: 24

Candidate Starts for Llorens_36:

(Start: 24 @29794 has 124 MA's), (28, 29809), (29, 29815), (Start: 32 @29848 has 5 MA's), (35, 29863), (37, 29872), (41, 29908), (61, 30100), (63, 30106), (70, 30157), (73, 30178),

Gene: Lunahalos_36 Start: 29794, Stop: 30225, Start Num: 24

Candidate Starts for Lunahalos_36:

(Start: 24 @29794 has 124 MA's), (28, 29809), (29, 29815), (Start: 32 @29848 has 5 MA's), (35, 29863), (37, 29872), (41, 29908), (61, 30100), (63, 30106), (70, 30157), (73, 30178),

Gene: MacKat_37 Start: 29771, Stop: 30202, Start Num: 24

Candidate Starts for MacKat_37:

(Start: 24 @29771 has 124 MA's), (28, 29786), (29, 29792), (Start: 32 @29825 has 5 MA's), (35, 29840), (37, 29849), (41, 29885), (53, 30005), (61, 30077), (63, 30083), (70, 30134), (73, 30155),

Gene: MacnCheese_39 Start: 31034, Stop: 31432, Start Num: 24

Candidate Starts for MacnCheese_39:

(Start: 24 @31034 has 124 MA's), (28, 31049), (29, 31055), (Start: 32 @31070 has 5 MA's), (34, 31082), (40, 31124), (43, 31148), (52, 31220), (57, 31271), (60, 31304), (63, 31325), (73, 31397),

Gene: MalagasyRose_38 Start: 29776, Stop: 30249, Start Num: 11

Candidate Starts for MalagasyRose_38:

(Start: 11 @29776 has 1 MA's), (12, 29785), (20, 29809), (22, 29827), (36, 29908), (42, 29950), (44, 29974), (49, 29992), (56, 30079), (64, 30148), (65, 30151), (70, 30196), (71, 30202), (73, 30217),

Gene: Marcoliusprime_36 Start: 29437, Stop: 29841, Start Num: 27

Candidate Starts for Marcoliusprime_36:

(Start: 27 @29437 has 10 MA's), (Start: 32 @29482 has 5 MA's), (36, 29500), (39, 29518), (43, 29560), (65, 29740), (70, 29785), (73, 29806),

Gene: MarkPhew_38 Start: 29502, Stop: 29918, Start Num: 24

Candidate Starts for MarkPhew_38:

(Start: 24 @29502 has 124 MA's), (29, 29523), (Start: 32 @29556 has 5 MA's), (36, 29574), (41, 29616), (48, 29658), (61, 29808), (63, 29814), (73, 29886),

Gene: Marshawn_38 Start: 29915, Stop: 30331, Start Num: 24

Candidate Starts for Marshawn_38:

(Start: 24 @29915 has 124 MA's), (28, 29930), (29, 29936), (Start: 32 @29969 has 5 MA's), (41, 30029), (48, 30071), (61, 30221), (63, 30227), (73, 30299),

Gene: McMater_37 Start: 29224, Stop: 29637, Start Num: 24

Candidate Starts for McMater_37:

(Start: 24 @29224 has 124 MA's), (28, 29239), (29, 29245), (Start: 32 @29278 has 5 MA's), (40, 29332), (43, 29356), (55, 29467), (59, 29497), (61, 29527), (63, 29533), (70, 29584), (73, 29605),

Gene: Mdavu_32 Start: 29104, Stop: 29517, Start Num: 24

Candidate Starts for Mdavu_32:

(Start: 24 @29104 has 124 MA's), (28, 29119), (Start: 32 @29158 has 5 MA's), (41, 29218), (52, 29308), (63, 29413), (68, 29446), (69, 29452), (73, 29485),

Gene: MeaningOfLife_36 Start: 29739, Stop: 30170, Start Num: 24

Candidate Starts for MeaningOfLife_36:

(Start: 24 @29739 has 124 MA's), (28, 29754), (29, 29760), (Start: 32 @29793 has 5 MA's), (35, 29808), (37, 29817), (41, 29853), (61, 30045), (63, 30051), (70, 30102), (73, 30123),

Gene: Megsy_37 Start: 29727, Stop: 30158, Start Num: 24

Candidate Starts for Megsy_37:

(Start: 24 @29727 has 124 MA's), (28, 29742), (29, 29748), (Start: 32 @29781 has 5 MA's), (35, 29796), (37, 29805), (61, 30033), (63, 30039), (70, 30090), (73, 30111),

Gene: Milly_36 Start: 29410, Stop: 29814, Start Num: 27

Candidate Starts for Milly_36:

(Start: 27 @29410 has 10 MA's), (Start: 32 @29455 has 5 MA's), (36, 29473), (39, 29491), (43, 29533), (65, 29713), (70, 29758), (73, 29779),

Gene: Miryou_37 Start: 30621, Stop: 31079, Start Num: 14

Candidate Starts for Miryou_37:

(Start: 14 @30621 has 17 MA's), (Start: 21 @30642 has 1 MA's), (Start: 32 @30714 has 5 MA's), (33, 30717), (36, 30732), (41, 30774), (63, 30972), (64, 30975), (65, 30978), (69, 31011), (73, 31044),

Gene: Mufasa_36 Start: 29087, Stop: 29491, Start Num: 27

Candidate Starts for Mufasa_36:

(Start: 27 @29087 has 10 MA's), (Start: 32 @29132 has 5 MA's), (36, 29150), (39, 29168), (46, 29231), (70, 29435), (73, 29456),

Gene: Murucutumbu_36 Start: 29727, Stop: 30158, Start Num: 24

Candidate Starts for Murucutumbu_36:

(Start: 24 @29727 has 124 MA's), (28, 29742), (29, 29748), (Start: 32 @29781 has 5 MA's), (37, 29805), (41, 29841), (61, 30033), (63, 30039), (70, 30090), (73, 30111),

Gene: Mynx_36 Start: 29776, Stop: 30207, Start Num: 24

Candidate Starts for Mynx_36:

(Start: 24 @29776 has 124 MA's), (28, 29791), (29, 29797), (Start: 32 @29830 has 5 MA's), (35, 29845), (37, 29854), (41, 29890), (57, 30034), (61, 30082), (63, 30088), (70, 30139), (73, 30160),

Gene: Nergal_33 Start: 27673, Stop: 28089, Start Num: 23

Candidate Starts for Nergal_33:

(Start: 23 @27673 has 1 MA's), (26, 27679), (28, 27688), (29, 27694), (30, 27703), (31, 27718), (Start: 32 @27727 has 5 MA's), (39, 27763), (43, 27805), (62, 27979), (69, 28021), (73, 28054),

Gene: Nibb_36 Start: 29121, Stop: 29483, Start Num: 32

Candidate Starts for Nibb_36:

(Start: 24 @29067 has 124 MA's), (29, 29088), (Start: 32 @29121 has 5 MA's), (41, 29181), (48, 29223), (61, 29373), (63, 29379),

Gene: Nikao_32 Start: 29116, Stop: 29529, Start Num: 24

Candidate Starts for Nikao_32:

(Start: 24 @29116 has 124 MA's), (28, 29131), (Start: 32 @29170 has 5 MA's), (41, 29230), (52, 29320), (63, 29425), (68, 29458), (69, 29464), (73, 29497),

Gene: Niklas_37 Start: 29227, Stop: 29640, Start Num: 24

Candidate Starts for Niklas_37:

(Start: 24 @29227 has 124 MA's), (28, 29242), (29, 29248), (Start: 32 @29281 has 5 MA's), (40, 29335), (43, 29359), (55, 29470), (59, 29500), (61, 29530), (63, 29536), (70, 29587), (73, 29608),

Gene: November_36 Start: 30144, Stop: 30563, Start Num: 24

Candidate Starts for November_36:

(15, 30105), (18, 30111), (Start: 24 @30144 has 124 MA's), (28, 30159), (Start: 32 @30198 has 5 MA's), (40, 30252), (41, 30258), (43, 30276), (55, 30387), (60, 30432), (63, 30453), (73, 30525),

Gene: Nutello_32 Start: 29116, Stop: 29529, Start Num: 24

Candidate Starts for Nutello_32:

(Start: 24 @29116 has 124 MA's), (28, 29131), (Start: 32 @29170 has 5 MA's), (41, 29230), (52, 29320), (63, 29425), (68, 29458), (69, 29464), (73, 29497),

Gene: OkiRoe_37 Start: 30638, Stop: 31096, Start Num: 14

Candidate Starts for OkiRoe_37:

(Start: 14 @30638 has 17 MA's), (Start: 21 @30659 has 1 MA's), (Start: 32 @30731 has 5 MA's), (33, 30734), (36, 30749), (41, 30791), (63, 30989), (64, 30992), (65, 30995), (69, 31028), (73, 31061),

Gene: Omnicron_40 Start: 30280, Stop: 30720, Start Num: 14

Candidate Starts for Omnicron_40:

(Start: 14 @30280 has 17 MA's), (Start: 19 @30295 has 1 MA's), (Start: 32 @30355 has 5 MA's), (33, 30358), (36, 30373), (41, 30415), (63, 30613), (69, 30652), (72, 30679), (73, 30685),

Gene: Oscar_37 Start: 29612, Stop: 30028, Start Num: 24

Candidate Starts for Oscar_37:

(Start: 5 @29537 has 1 MA's), (7, 29540), (9, 29543), (Start: 24 @29612 has 124 MA's), (28, 29627), (29, 29633), (Start: 32 @29666 has 5 MA's), (41, 29726), (48, 29768), (55, 29858), (61, 29918), (63, 29924), (73, 29996),

Gene: Padfoot_36 Start: 29794, Stop: 30225, Start Num: 24

Candidate Starts for Padfoot_36:

(Start: 24 @29794 has 124 MA's), (28, 29809), (29, 29815), (Start: 32 @29848 has 5 MA's), (35, 29863), (37, 29872), (41, 29908), (53, 30028), (57, 30052), (61, 30100), (63, 30106), (70, 30157), (73, 30178),

Gene: Padpat_37 Start: 29754, Stop: 30185, Start Num: 24

Candidate Starts for Padpat_37:

(Start: 24 @29754 has 124 MA's), (28, 29769), (29, 29775), (Start: 32 @29808 has 5 MA's), (35, 29823), (37, 29832), (41, 29868), (61, 30060), (63, 30066), (70, 30117), (73, 30138),

Gene: Paola_37 Start: 30636, Stop: 31094, Start Num: 14

Candidate Starts for Paola_37:

(Start: 14 @30636 has 17 MA's), (Start: 21 @30657 has 1 MA's), (Start: 32 @30729 has 5 MA's), (33, 30732), (36, 30747), (41, 30789), (63, 30987), (64, 30990), (65, 30993), (69, 31026), (73, 31059),

Gene: Peanam_37 Start: 29224, Stop: 29637, Start Num: 24

Candidate Starts for Peanam_37:

(Start: 24 @29224 has 124 MA's), (28, 29239), (29, 29245), (Start: 32 @29278 has 5 MA's), (40, 29332), (43, 29356), (55, 29467), (59, 29497), (61, 29527), (63, 29533), (70, 29584), (73, 29605),

Gene: Peel_36 Start: 29796, Stop: 30227, Start Num: 24

Candidate Starts for Peel_36:

(Start: 24 @29796 has 124 MA's), (28, 29811), (29, 29817), (Start: 32 @29850 has 5 MA's), (35, 29865), (37, 29874), (41, 29910), (61, 30102), (63, 30108), (70, 30159), (73, 30180),

Gene: Pharb_36 Start: 30071, Stop: 30466, Start Num: 24

Candidate Starts for Pharb_36:

(Start: 13 @30026 has 6 MA's), (15, 30029), (18, 30035), (Start: 24 @30071 has 124 MA's), (28, 30086), (Start: 32 @30101 has 5 MA's), (43, 30179), (57, 30302), (61, 30350), (63, 30356), (64, 30359), (73, 30428),

Gene: PhelpsODU_37 Start: 29478, Stop: 29915, Start Num: 24

Candidate Starts for PhelpsODU_37:

(Start: 13 @29436 has 6 MA's), (18, 29445), (Start: 24 @29478 has 124 MA's), (28, 29493), (Start: 32 @29532 has 5 MA's), (54, 29721), (57, 29736), (63, 29790), (68, 29823), (73, 29862), (74, 29892),

Gene: Phrank_38 Start: 29429, Stop: 29866, Start Num: 24

Candidate Starts for Phrank_38:

(Start: 13 @29387 has 6 MA's), (18, 29396), (Start: 24 @29429 has 124 MA's), (28, 29444), (Start: 32 @29483 has 5 MA's), (54, 29672), (57, 29687), (61, 29735), (63, 29741), (68, 29774), (73, 29813), (74, 29843),

Gene: Piatt_36 Start: 29794, Stop: 30225, Start Num: 24

Candidate Starts for Piatt_36:

(Start: 24 @29794 has 124 MA's), (28, 29809), (29, 29815), (Start: 32 @29848 has 5 MA's), (35, 29863), (37, 29872), (41, 29908), (53, 30028), (57, 30052), (61, 30100), (63, 30106), (70, 30157), (73, 30178),

Gene: Pixie_38 Start: 30492, Stop: 30932, Start Num: 13

Candidate Starts for Pixie_38:

(Start: 13 @30492 has 6 MA's), (15, 30495), (18, 30501), (Start: 24 @30537 has 124 MA's), (28, 30552), (Start: 32 @30567 has 5 MA's), (43, 30645), (52, 30717), (55, 30756), (57, 30768), (61, 30816), (63, 30822), (65, 30828), (73, 30894),

Gene: Pokerus_35 Start: 29710, Stop: 30141, Start Num: 24

Candidate Starts for Pokerus_35:

(Start: 24 @29710 has 124 MA's), (28, 29725), (29, 29731), (Start: 32 @29764 has 5 MA's), (35, 29779), (37, 29788), (41, 29824), (61, 30016), (63, 30022), (70, 30073), (73, 30094),

Gene: Prithvi_36 Start: 29724, Stop: 30155, Start Num: 24

Candidate Starts for Prithvi_36:

(Start: 24 @29724 has 124 MA's), (28, 29739), (29, 29745), (Start: 32 @29778 has 5 MA's), (35, 29793), (37, 29802), (41, 29838), (61, 30030), (63, 30036), (70, 30087), (73, 30108),

Gene: Psycho_37 Start: 30488, Stop: 30952, Start Num: 14

Candidate Starts for Psycho_37:

(Start: 14 @30488 has 17 MA's), (Start: 21 @30509 has 1 MA's), (Start: 32 @30581 has 5 MA's), (36, 30599), (41, 30641), (57, 30785), (61, 30833), (63, 30839), (65, 30845), (67, 30863), (70, 30890), (72, 30905), (73, 30911),

Gene: QuincyRose_35 Start: 29783, Stop: 30214, Start Num: 24

Candidate Starts for QuincyRose_35:

(Start: 24 @29783 has 124 MA's), (28, 29798), (29, 29804), (Start: 32 @29837 has 5 MA's), (35, 29852), (37, 29861), (41, 29897), (61, 30089), (63, 30095), (70, 30146), (73, 30167),

Gene: Ramen_36 Start: 29759, Stop: 30190, Start Num: 24

Candidate Starts for Ramen_36:

(Start: 24 @29759 has 124 MA's), (28, 29774), (29, 29780), (Start: 32 @29813 has 5 MA's), (35, 29828), (37, 29837), (41, 29873), (53, 29993), (61, 30065), (63, 30071), (70, 30122), (73, 30143),

Gene: Rando14_39 Start: 29866, Stop: 30291, Start Num: 19

Candidate Starts for Rando14_39:

(Start: 14 @29851 has 17 MA's), (Start: 19 @29866 has 1 MA's), (Start: 32 @29926 has 5 MA's), (33, 29929), (36, 29944), (41, 29986), (51, 30055), (57, 30130), (63, 30184), (67, 30208), (72, 30250), (73, 30256),

Gene: Rapunzel97_36 Start: 29761, Stop: 30192, Start Num: 24

Candidate Starts for Rapunzel97_36:

(Start: 24 @29761 has 124 MA's), (28, 29776), (29, 29782), (Start: 32 @29815 has 5 MA's), (35, 29830), (37, 29839), (41, 29875), (61, 30067), (63, 30073), (70, 30124), (73, 30145),

Gene: Richo_37 Start: 29224, Stop: 29637, Start Num: 24

Candidate Starts for Richo_37:

(Start: 24 @29224 has 124 MA's), (28, 29239), (29, 29245), (Start: 32 @29278 has 5 MA's), (40, 29332), (43, 29356), (55, 29467), (59, 29497), (61, 29527), (63, 29533), (70, 29584), (73, 29605),

Gene: Rosmarinus_36 Start: 29782, Stop: 30213, Start Num: 24

Candidate Starts for Rosmarinus_36:

(Start: 24 @29782 has 124 MA's), (28, 29797), (29, 29803), (Start: 32 @29836 has 5 MA's), (35, 29851), (37, 29860), (41, 29896), (61, 30088), (63, 30094), (70, 30145), (73, 30166),

Gene: SamuelLPlaqson_36 Start: 29703, Stop: 30134, Start Num: 24

Candidate Starts for SamuelLPlaqson_36:

(Start: 24 @29703 has 124 MA's), (28, 29718), (Start: 32 @29757 has 5 MA's), (37, 29781), (41, 29817), (52, 29907), (61, 30009), (62, 30012), (63, 30015), (65, 30021), (70, 30066), (73, 30087),

Gene: Scarlett_37 Start: 29612, Stop: 30028, Start Num: 24

Candidate Starts for Scarlett_37:

(Start: 5 @29537 has 1 MA's), (7, 29540), (9, 29543), (Start: 24 @29612 has 124 MA's), (28, 29627), (29, 29633), (Start: 32 @29666 has 5 MA's), (41, 29726), (48, 29768), (55, 29858), (61, 29918), (63, 29924), (73, 29996),

Gene: SgtBeansprout_32 Start: 29116, Stop: 29529, Start Num: 24

Candidate Starts for SgtBeansprout_32:

(Start: 24 @29116 has 124 MA's), (28, 29131), (Start: 32 @29170 has 5 MA's), (41, 29230), (52, 29320), (63, 29425), (68, 29458), (69, 29464), (73, 29497),

Gene: Shadow1_37 Start: 29188, Stop: 29625, Start Num: 24

Candidate Starts for Shadow1_37:

(10, 29125), (Start: 13 @29146 has 6 MA's), (18, 29155), (Start: 24 @29188 has 124 MA's), (28, 29203), (Start: 32 @29242 has 5 MA's), (57, 29446), (63, 29500), (68, 29533), (73, 29572),

Gene: Shaobing_37 Start: 29224, Stop: 29637, Start Num: 24

Candidate Starts for Shaobing_37:

(Start: 24 @29224 has 124 MA's), (28, 29239), (29, 29245), (Start: 32 @29278 has 5 MA's), (40, 29332), (43, 29356), (55, 29467), (59, 29497), (61, 29527), (63, 29533), (70, 29584), (73, 29605),

Gene: ShedlockHolmes_39 Start: 31068, Stop: 31463, Start Num: 24

Candidate Starts for ShedlockHolmes_39:

(Start: 13 @31023 has 6 MA's), (15, 31026), (18, 31032), (Start: 24 @31068 has 124 MA's), (28, 31083), (Start: 32 @31098 has 5 MA's), (43, 31176), (52, 31248), (55, 31287), (57, 31299), (61, 31347), (63, 31353), (64, 31356), (65, 31359), (73, 31425),

Gene: ShiaSurprise_37 Start: 29794, Stop: 30225, Start Num: 24

Candidate Starts for ShiaSurprise_37:

(Start: 24 @29794 has 124 MA's), (28, 29809), (29, 29815), (Start: 32 @29848 has 5 MA's), (35, 29863), (37, 29872), (41, 29908), (53, 30028), (57, 30052), (61, 30100), (63, 30106), (70, 30157), (73, 30178),

Gene: SirPhilip_36 Start: 28708, Stop: 29124, Start Num: 24

Candidate Starts for SirPhilip_36:

(8, 28636), (9, 28639), (Start: 24 @28708 has 124 MA's), (29, 28729), (30, 28738), (Start: 32 @28762 has 5 MA's), (34, 28774), (41, 28822), (48, 28864), (61, 29014), (63, 29020), (73, 29092),

Gene: Slimphazie_36 Start: 29761, Stop: 30192, Start Num: 24

Candidate Starts for Slimphazie_36:

(Start: 24 @29761 has 124 MA's), (28, 29776), (29, 29782), (Start: 32 @29815 has 5 MA's), (35, 29830), (37, 29839), (41, 29875), (61, 30067), (63, 30073), (70, 30124), (73, 30145),

Gene: SoSeph_37 Start: 30803, Stop: 31240, Start Num: 21

Candidate Starts for SoSeph_37:

(Start: 14 @30782 has 17 MA's), (Start: 21 @30803 has 1 MA's), (Start: 32 @30875 has 5 MA's), (33, 30878), (36, 30893), (41, 30935), (63, 31133), (64, 31136), (65, 31139), (69, 31172), (73, 31205),

Gene: Spock_36 Start: 29794, Stop: 30225, Start Num: 24

Candidate Starts for Spock_36:

(Start: 24 @29794 has 124 MA's), (28, 29809), (29, 29815), (Start: 32 @29848 has 5 MA's), (35, 29863), (37, 29872), (41, 29908), (61, 30100), (63, 30106), (70, 30157), (73, 30178),

Gene: Stinson_37 Start: 29996, Stop: 30427, Start Num: 24

Candidate Starts for Stinson_37:

(Start: 24 @29996 has 124 MA's), (28, 30011), (29, 30017), (Start: 32 @30050 has 5 MA's), (37, 30074), (41, 30110), (61, 30302), (63, 30308), (70, 30359), (73, 30380),

Gene: Strobilo_36 Start: 29411, Stop: 29815, Start Num: 27

Candidate Starts for Strobilo_36:

(Start: 27 @29411 has 10 MA's), (Start: 32 @29456 has 5 MA's), (36, 29474), (39, 29492), (43, 29534), (65, 29714), (70, 29759), (73, 29780),

Gene: Sulley_36 Start: 29727, Stop: 30158, Start Num: 24

Candidate Starts for Sulley_36:

(Start: 24 @29727 has 124 MA's), (28, 29742), (29, 29748), (Start: 32 @29781 has 5 MA's), (35, 29796), (37, 29805), (41, 29841), (61, 30033), (63, 30039), (70, 30090), (73, 30111),

Gene: Sunflower1121_37 Start: 29281, Stop: 29718, Start Num: 24

Candidate Starts for Sunflower1121_37:

(10, 29218), (Start: 13 @29239 has 6 MA's), (18, 29248), (Start: 24 @29281 has 124 MA's), (28, 29296), (Start: 32 @29335 has 5 MA's), (57, 29539), (63, 29593), (68, 29626), (73, 29665),

Gene: Syra333_38 Start: 29207, Stop: 29644, Start Num: 24

Candidate Starts for Syra333_38:

(10, 29144), (Start: 13 @29165 has 6 MA's), (18, 29174), (Start: 24 @29207 has 124 MA's), (28, 29222), (Start: 32 @29261 has 5 MA's), (57, 29465), (63, 29519), (68, 29552), (73, 29591),

Gene: TBond007_38 Start: 30491, Stop: 30931, Start Num: 13

Candidate Starts for TBond007_38:

(Start: 13 @30491 has 6 MA's), (15, 30494), (18, 30500), (Start: 24 @30536 has 124 MA's), (28, 30551), (Start: 32 @30566 has 5 MA's), (43, 30644), (52, 30716), (55, 30755), (57, 30767), (61, 30815), (63, 30821), (65, 30827), (73, 30893),

Gene: TClif_38 Start: 29736, Stop: 30098, Start Num: 32

Candidate Starts for TClif_38:

(Start: 23 @29676 has 1 MA's), (25, 29682), (28, 29697), (29, 29703), (Start: 32 @29736 has 5 MA's), (40, 29790), (47, 29838), (61, 29985), (73, 30063),

Gene: TM4_38 Start: 29183, Stop: 29587, Start Num: 27

Candidate Starts for TM4_38:

(Start: 27 @29183 has 10 MA's), (Start: 32 @29228 has 5 MA's), (36, 29246), (39, 29264), (43, 29306), (70, 29531), (73, 29552),

Gene: Tachez_36 Start: 29723, Stop: 30154, Start Num: 24

Candidate Starts for Tachez_36:

(Start: 24 @29723 has 124 MA's), (28, 29738), (29, 29744), (Start: 32 @29777 has 5 MA's), (35, 29792), (37, 29801), (41, 29837), (61, 30029), (63, 30035), (70, 30086), (73, 30107),

Gene: TaiwanKao_38 Start: 29724, Stop: 30155, Start Num: 24

Candidate Starts for TaiwanKao_38:

(Start: 24 @29724 has 124 MA's), (28, 29739), (29, 29745), (Start: 32 @29778 has 5 MA's), (35, 29793), (37, 29802), (61, 30030), (63, 30036), (70, 30087), (73, 30108),

Gene: Teejan_32 Start: 29116, Stop: 29529, Start Num: 24

Candidate Starts for Teejan_32:

(Start: 24 @29116 has 124 MA's), (28, 29131), (Start: 32 @29170 has 5 MA's), (41, 29230), (52, 29320), (63, 29425), (68, 29458), (69, 29464), (73, 29497),

Gene: Thyatira_37 Start: 30636, Stop: 31094, Start Num: 14

Candidate Starts for Thyatira_37:

(Start: 14 @30636 has 17 MA's), (Start: 21 @30657 has 1 MA's), (Start: 32 @30729 has 5 MA's), (33, 30732), (36, 30747), (41, 30789), (63, 30987), (64, 30990), (65, 30993), (69, 31026), (73, 31059),

Gene: Tierra_38 Start: 30149, Stop: 30586, Start Num: 24

Candidate Starts for Tierra_38:

(Start: 13 @30107 has 6 MA's), (18, 30116), (Start: 24 @30149 has 124 MA's), (28, 30164), (Start: 32 @30203 has 5 MA's), (54, 30392), (57, 30407), (61, 30455), (63, 30461), (68, 30494), (73, 30533), (74, 30563),

Gene: TingHuaYa_37 Start: 29139, Stop: 29570, Start Num: 24

Candidate Starts for TingHuaYa_37:

(Start: 24 @29139 has 124 MA's), (28, 29154), (29, 29160), (Start: 32 @29193 has 5 MA's), (37, 29217), (41, 29253), (61, 29445), (63, 29451), (65, 29457), (70, 29502), (73, 29523),

Gene: TiniBug_36 Start: 29699, Stop: 30130, Start Num: 24

Candidate Starts for TiniBug_36:

(Start: 24 @29699 has 124 MA's), (28, 29714), (Start: 32 @29753 has 5 MA's), (37, 29777), (41, 29813), (52, 29903), (61, 30005), (62, 30008), (63, 30011), (65, 30017), (70, 30062), (73, 30083),

Gene: Tiri_37 Start: 29775, Stop: 30206, Start Num: 24

Candidate Starts for Tiri_37:

(Start: 24 @29775 has 124 MA's), (28, 29790), (29, 29796), (Start: 32 @29829 has 5 MA's), (35, 29844), (37, 29853), (41, 29889), (57, 30033), (61, 30081), (63, 30087), (70, 30138), (73, 30159),

Gene: Topper_36 Start: 29794, Stop: 30225, Start Num: 24

Candidate Starts for Topper_36:

(Start: 24 @29794 has 124 MA's), (28, 29809), (29, 29815), (Start: 32 @29848 has 5 MA's), (35, 29863), (37, 29872), (41, 29908), (61, 30100), (63, 30106), (70, 30157), (73, 30178),

Gene: Torres_32 Start: 29116, Stop: 29529, Start Num: 24

Candidate Starts for Torres_32:

(Start: 24 @29116 has 124 MA's), (28, 29131), (Start: 32 @29170 has 5 MA's), (41, 29230), (52, 29320), (63, 29425), (68, 29458), (69, 29464), (73, 29497),

Gene: TreyKay_36 Start: 29724, Stop: 30155, Start Num: 24

Candidate Starts for TreyKay_36:

(Start: 24 @29724 has 124 MA's), (28, 29739), (29, 29745), (Start: 32 @29778 has 5 MA's), (35, 29793), (37, 29802), (41, 29838), (61, 30030), (63, 30036), (70, 30087), (73, 30108),

Gene: TribelTrouble_37 Start: 30616, Stop: 31011, Start Num: 24

Candidate Starts for TribelTrouble_37:

(Start: 13 @30571 has 6 MA's), (15, 30574), (18, 30580), (Start: 24 @30616 has 124 MA's), (28, 30631), (Start: 32 @30646 has 5 MA's), (38, 30679), (43, 30724), (57, 30847), (63, 30901), (65, 30907), (73, 30973),

Gene: TruffulaTree_36 Start: 29757, Stop: 30188, Start Num: 24

Candidate Starts for TruffulaTree_36:

(Start: 24 @29757 has 124 MA's), (28, 29772), (29, 29778), (Start: 32 @29811 has 5 MA's), (35, 29826), (37, 29835), (41, 29871), (61, 30063), (63, 30069), (70, 30120), (73, 30141),

Gene: Twitch_36 Start: 29796, Stop: 30227, Start Num: 24

Candidate Starts for Twitch_36:

(Start: 24 @29796 has 124 MA's), (28, 29811), (29, 29817), (Start: 32 @29850 has 5 MA's), (35, 29865), (37, 29874), (41, 29910), (61, 30102), (63, 30108), (70, 30159), (73, 30180),

Gene: Unicorn_37 Start: 29478, Stop: 29915, Start Num: 24

Candidate Starts for Unicorn_37:

(Start: 13 @29436 has 6 MA's), (18, 29445), (Start: 24 @29478 has 124 MA's), (28, 29493), (Start: 32 @29532 has 5 MA's), (54, 29721), (57, 29736), (63, 29790), (68, 29823), (73, 29862), (74, 29892),

Gene: Urkel_36 Start: 29703, Stop: 30134, Start Num: 24

Candidate Starts for Urkel_36:

(Start: 24 @29703 has 124 MA's), (28, 29718), (Start: 32 @29757 has 5 MA's), (37, 29781), (41, 29817), (52, 29907), (61, 30009), (62, 30012), (63, 30015), (65, 30021), (70, 30066), (73, 30087),

Gene: Validus_38 Start: 29156, Stop: 29569, Start Num: 24

Candidate Starts for Validus_38:

(Start: 24 @29156 has 124 MA's), (28, 29171), (Start: 32 @29210 has 5 MA's), (34, 29222), (41, 29270), (43, 29288), (52, 29360), (55, 29399), (61, 29459), (63, 29465), (65, 29471), (70, 29516), (73, 29537),

Gene: Veliki_36 Start: 29797, Stop: 30228, Start Num: 24

Candidate Starts for Veliki_36:

(Start: 24 @29797 has 124 MA's), (28, 29812), (29, 29818), (Start: 32 @29851 has 5 MA's), (35, 29866), (37, 29875), (41, 29911), (61, 30103), (63, 30109), (70, 30160), (73, 30181),

Gene: ViviJ_36 Start: 30404, Stop: 30862, Start Num: 14

Candidate Starts for ViviJ_36:

(Start: 14 @30404 has 17 MA's), (17, 30410), (Start: 21 @30425 has 1 MA's), (Start: 32 @30497 has 5 MA's), (33, 30500), (36, 30515), (41, 30557), (45, 30587), (58, 30707), (63, 30755), (69, 30794), (73, 30827),

Gene: Waterfoul_38 Start: 30877, Stop: 31335, Start Num: 14

Candidate Starts for Waterfoul_38:

(Start: 14 @30877 has 17 MA's), (Start: 21 @30898 has 1 MA's), (Start: 32 @30970 has 5 MA's), (33, 30973), (36, 30988), (41, 31030), (63, 31228), (64, 31231), (65, 31234), (69, 31267), (73, 31300),

Gene: Ximenita_39 Start: 29392, Stop: 29829, Start Num: 24

Candidate Starts for Ximenita_39:

(Start: 24 @29392 has 124 MA's), (28, 29407), (Start: 32 @29446 has 5 MA's), (57, 29650), (61, 29698), (63, 29704), (66, 29716), (68, 29737), (73, 29776), (74, 29806),

Gene: YoureAdopted_35 Start: 29728, Stop: 30159, Start Num: 24

Candidate Starts for YoureAdopted_35:

(Start: 24 @29728 has 124 MA's), (28, 29743), (29, 29749), (Start: 32 @29782 has 5 MA's), (35, 29797), (37, 29806), (41, 29842), (61, 30034), (63, 30040), (70, 30091), (73, 30112),

Gene: Yuna_38 Start: 29755, Stop: 30186, Start Num: 24

Candidate Starts for Yuna_38:

(Start: 13 @29713 has 6 MA's), (15, 29716), (Start: 24 @29755 has 124 MA's), (28, 29770), (Start: 32 @29809 has 5 MA's), (36, 29827), (43, 29887), (63, 30067), (73, 30139),

Gene: Yunkel11_38 Start: 29398, Stop: 29829, Start Num: 24

Candidate Starts for Yunkel11_38:

(Start: 24 @29398 has 124 MA's), (28, 29413), (29, 29419), (Start: 32 @29452 has 5 MA's), (37, 29476), (41, 29512), (43, 29530), (54, 29641), (61, 29704), (63, 29710), (70, 29761), (73, 29782),

Gene: Zabiza_36 Start: 29761, Stop: 30192, Start Num: 24

Candidate Starts for Zabiza_36:

(Start: 24 @29761 has 124 MA's), (28, 29776), (29, 29782), (Start: 32 @29815 has 5 MA's), (35, 29830), (37, 29839), (41, 29875), (61, 30067), (63, 30073), (70, 30124), (73, 30145),

Gene: Zavala_36 Start: 29735, Stop: 30166, Start Num: 24

Candidate Starts for Zavala_36:

(Start: 24 @29735 has 124 MA's), (28, 29750), (29, 29756), (Start: 32 @29789 has 5 MA's), (35, 29804), (37, 29813), (41, 29849), (57, 29993), (61, 30041), (63, 30047), (70, 30098), (73, 30119),

Gene: ZoeJ_36 Start: 29156, Stop: 29560, Start Num: 27

Candidate Starts for ZoeJ_36:

(Start: 27 @29156 has 10 MA's), (Start: 32 @29201 has 5 MA's), (36, 29219), (39, 29237), (43, 29279), (65, 29459), (70, 29504), (73, 29525),