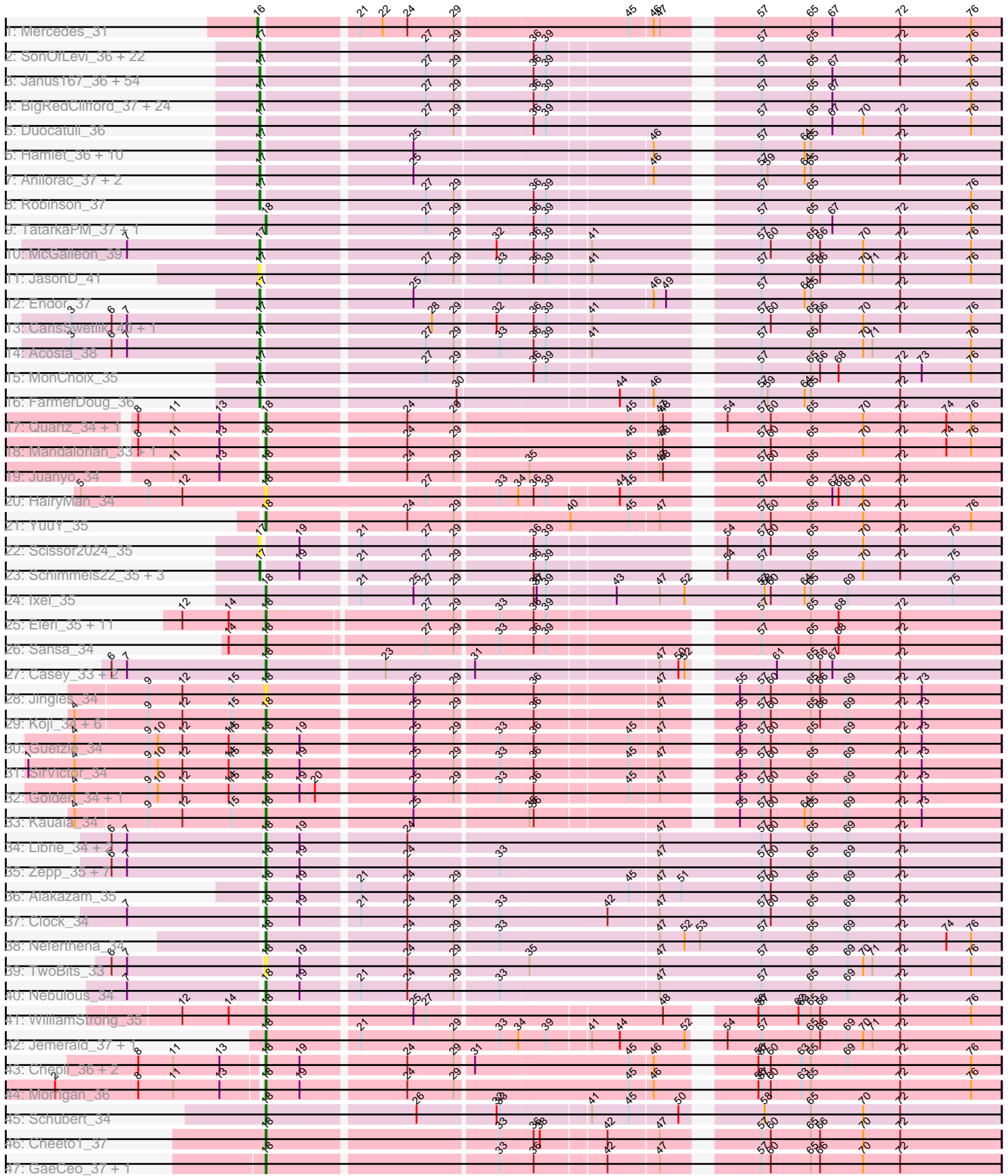


Pham 210844



Note: Tracks are now grouped by subcluster and scaled. Switching in subcluster is indicated by changes in track color. Track scale is now set by default to display the region 30 bp upstream of start 1 to 30 bp downstream of the last possible start. If this default region is judged to be packed too tightly with annotated starts, the track will be further scaled to only show that region of the ORF with annotated starts. This action will be indicated by adding "Zoomed" to the title. For starts, yellow indicates the location of called starts comprised solely of Glimmer/GeneMark auto-annotations, green indicates the location of called starts with at least 1 manual gene annotation.

Pham 210844 Report

This analysis was run 02/22/25 on database version 588.

Pham number 210844 has 199 members, 20 are drafts.

Phages represented in each track:

- Track 1 : Mercedes_31
- Track 2 : SonOfLevi_36, Ludgate_37, Asta_36, Nattles_36, TeddyBear_36, Etta_36, Erla_36, Raptor_37, Chamuel_36, Alyxandracam_37, RosieMae_37, Shee_37, Calix_36, Nagem_37, Gershwin_36, Baines_36, Kale_36, Pocket_36, SJay_37, Gelo_36, Exploradora_37, Bonino_36, Klimt_36
- Track 3 : Janus167_36, Thorongil_37, Strathdee_37, ManRay_36, StingRay_36, Phiderman_37, Christoph_36, MrWorldwide_37, Espinosa_36, Clancy_36, MillyPhilly_37, HankSprout_37, StirfryIV_36, Jerbirus_37, Kurt1_37, HungryHenry_36, AranulaLuti_36, PhredFlintston_37, KannH_36, TinSulphur_37, Symere_37, JeriBeth_37, AxiPup_37, ParleG_37, Aubergine_36, Pherferi_37, Gargoyle_37, Byron23_37, Rog141_36, Garey24_36, Rapheph_37, HanSolo_36, Gubbabump_36, Winzigespinne_36, Stanktossa_37, PuppyEggo_37, Vispistious_37, Ilzat_36, Martin_38, Papafritta_36, Inventa_37, Bandik_37, Chako_36, Sedgewig_36, WildNOut_37, Figueroism_37, Riyhil_37, Tenda_36, Ioannes_37, Benjalauren_37, Oats_36, Dothraki_37, JasperRussell_36, Greys_37, Zada_37
- Track 4 : BigRedClifford_37, BeautPeep30_37, Oxtober96_37, Phireproof_37, Blage_37, Phriends_37, MaeLinda_37, Teagan_37, Superfresh_37, Velene_37, BonesMcCoy_37, ShaiHulud_37, Antoinette_37, Lovelyunicorn_37, Convict_37, AlexAdler_37, OldNelly_37, Dave_37, Peep_37, Den3_37, Knox_37, Delphidian_37, Thompsone_37, Renzie_37, SoilGremlin_37
- Track 5 : Duocatuli_36
- Track 6 : Hamlet_36, Peppino_36, Raccoon_36, Redfield_36, Etna_36, KingJulien_36, BeeBee8_37, Stormbreaker8_36, Balsa_36, Leafus_36, Schnapsidee_36
- Track 7 : Anilorac_37, Agente005_37, GardenB_36
- Track 8 : Robinson_37
- Track 9 : TatarkaPM_37, NickSell_37
- Track 10 : McGalleon_39
- Track 11 : JasonD_41
- Track 12 : Endor_37
- Track 13 : CarisSwetlik_40, Jenos_40
- Track 14 : Acosta_38
- Track 15 : MonChoix_35
- Track 16 : FarmerDoug_36
- Track 17 : Quartz_34, Carostasia_33
- Track 18 : Mandalorian_33, Nucci_33
- Track 19 : Juanyo_34

- Track 20 : HairyMan_34
- Track 21 : YuuY_35
- Track 22 : Scissor2024_35
- Track 23 : Schimmels22_35, Tinyman4_35, HerculesXL_35, WestPM_33
- Track 24 : Ixel_35
- Track 25 : Eleri_35, Shamu_35, ColaCorta_35, ChikPic_35, Finny_35, Andromedas_35, Glamour_34, MCubed_35, Phanita_34, PSirce_34, Saratos_35, Zenitsu_35
- Track 26 : Sansa_34
- Track 27 : Casey_33, Pajaza_33, Pikmin_33
- Track 28 : Jingles_34
- Track 29 : Koji_34, Bustleton_34, Sinatra_34, BouleyBill_34, PrincePhergus_34, RenegadeRaider_35, Pherbot_34
- Track 30 : Guetzie_34
- Track 31 : SirVictor_34
- Track 32 : Golden_34, Lucky3_34
- Track 33 : Kauala_34
- Track 34 : Librie_34, CaptainRex_34, Fulton_34
- Track 35 : Zepp_35, QuadZero_34, Zayuliv_34, Wardwill_36, LilTerminator_35, BaronJohn_35, GreenIvy_34, Hasitha_34
- Track 36 : Alakazam_35
- Track 37 : Clock_34
- Track 38 : Neferthena_34
- Track 39 : TwoBits_33
- Track 40 : Nebulous_34
- Track 41 : WilliamStrong_35
- Track 42 : Jemerald_37, Juicer_37
- Track 43 : Chepli_36, Luna18_36, KatChan_36
- Track 44 : Morigan_36
- Track 45 : Schubert_34
- Track 46 : Cheeto1_37
- Track 47 : GaeCeo_37, ChickenKing_36

Summary of Final Annotations (See graph section above for start numbers):

The start number called the most often in the published annotations is 17, it was called in 121 of the 179 non-draft genes in the pham.

Genes that call this "Most Annotated" start:

- Acosta_38, Agente005_37, AlexAdler_37, Alyxandracam_37, Anilorac_37, Antoinette_37, AranulaLuti_36, Asta_36, Aubergine_36, AxiPup_37, Baines_36, Balsa_36, Bandik_37, BeautPeep30_37, BeeBee8_37, Benjalauren_37, BigRedClifford_37, Blage_37, BonesMcCoy_37, Bonino_36, Byron23_37, Calix_36, CarisSwetlik_40, Chako_36, Chamuel_36, Christoph_36, Clancy_36, Convict_37, Dave_37, Delphidian_37, Den3_37, Dothraki_37, Duocatuli_36, Endor_37, Erla_36, Espinosa_36, Etna_36, Etta_36, Exploradora_37, FarmerDoug_36, Figueroism_37, GardenB_36, Garey24_36, Gargoyle_37, Gelo_36, Gershwin_36, Greys_37, Gubbabump_36, Hamlet_36, HanSolo_36, HankSprout_37, HerculesXL_35, HungryHenry_36, Ilzat_36, Inventa_37, Ioannes_37, Janus167_36, JasonD_41, JasperRussell_36, Jenos_40, Jerbirus_37, JeriBeth_37, Kale_36, KannH_36,

KingJulien_36, Klimt_36, Knox_37, Kurt1_37, Leafus_36, Lovelyunicorn_37, Ludgate_37, MaeLinda_37, ManRay_36, Martin_38, McGalleon_39, MillyPhilly_37, MonChoix_35, MrWorldwide_37, Nagem_37, Nattles_36, Oats_36, OldNelly_37, Oxtober96_37, Papafritta_36, ParleG_37, Peep_37, Peppino_36, Pherferi_37, Phiderman_37, Phireproof_37, PhredFlintston_37, Phriends_37, Pocket_36, PuppyEggo_37, Raccoon_36, Rapheph_37, Raptor_37, Redfield_36, Renzie_37, Riyhil_37, Robinson_37, Rog141_36, RosieMae_37, SJay_37, Schimmels22_35, Schnapsidee_36, Scissor2024_35, Sedgewig_36, ShaiHulud_37, Shee_37, SoilGremlin_37, SonOfLevi_36, Stanktossa_37, StingRay_36, StirfryIV_36, Stormbreaker8_36, Strathdee_37, Superfresh_37, Symere_37, Teagan_37, TeddyBear_36, Tenda_36, Thompsone_37, Thorongil_37, TinSulphur_37, Tinyman4_35, Velene_37, Vispistious_37, WestPM_33, WildNOut_37, Winzigespinne_36, Zada_37,

Genes that have the "Most Annotated" start but do not call it:

-

Genes that do not have the "Most Annotated" start:

- Alakazam_35, Andromedas_35, BaronJohn_35, BouleyBill_34, Bustleton_34, CaptainRex_34, Carostasia_33, Casey_33, Cheeto1_37, Chepli_36, ChickenKing_36, ChikPic_35, Clock_34, ColaCorta_35, Eleri_35, Finny_35, Fulton_34, GaeCeo_37, Glamour_34, Golden_34, Greenlvy_34, Guetzie_34, HairyMan_34, Hasitha_34, Ixel_35, Jemerald_37, Jingles_34, Juanyo_34, Juicer_37, KatChan_36, Kauala_34, Koji_34, Librie_34, LilTerminator_35, Lucky3_34, Luna18_36, MCubed_35, Mandalorian_33, Mercedes_31, Morrigan_36, Nebulous_34, Neferthena_34, NickSell_37, Nucci_33, PSirce_34, Pajaza_33, Phanita_34, Pherbot_34, Pikmin_33, PrincePhergus_34, QuadZero_34, Quartz_34, RenegadeRaider_35, Sansa_34, Saratos_35, Schubert_34, Shamu_35, Sinatra_34, SirVictor_34, TatarkaPM_37, TwoBits_33, Wardwill_36, WilliamStrong_35, YuuY_35, Zayuliv_34, Zenitsu_35, Zepp_35,

Summary by start number:

Start 16:

- Found in 1 of 199 (0.5%) of genes in pham
- Manual Annotations of this start: 1 of 179
- Called 100.0% of time when present
- Phage (with cluster) where this start called: Mercedes_31 (EA),

Start 17:

- Found in 132 of 199 (66.3%) of genes in pham
- Manual Annotations of this start: 121 of 179
- Called 100.0% of time when present
- Phage (with cluster) where this start called: Acosta_38 (EA1), Agente005_37 (EA1), AlexAdler_37 (EA1), Alyxandracam_37 (EA1), Anilorac_37 (EA1), Antoinette_37 (EA1), AranulaLuti_36 (EA1), Asta_36 (EA1), Aubergine_36 (EA1), AxiPup_37 (EA1), Baines_36 (EA1), Balsa_36 (EA1), Bandik_37 (EA1), BeautPeep30_37 (EA1), BeeBee8_37 (EA1), Benjalauren_37 (EA1), BigRedClifford_37 (EA1), Blage_37 (EA1), BonesMcCoy_37 (EA1), Bonino_36 (EA1), Byron23_37 (EA1), Calix_36 (EA1), CarisSwetlik_40 (EA1), Chako_36 (EA1), Chamuel_36 (EA1), Christoph_36 (EA1), Clancy_36 (EA1), Convict_37 (EA1), Dave_37 (EA1), Delphidian_37 (EA1), Den3_37 (EA1), Dothraki_37 (EA1), Duocatuli_36 (EA1), Endor_37 (EA1), Erla_36 (EA1), Espinosa_36 (EA1), Etna_36 (EA1), Etta_36 (EA1), Exploradora_37 (UNK),

FarmerDoug_36 (EA1), Figueroism_37 (EA1), GardenB_36 (EA1), Garey24_36 (EA1), Gargoyle_37 (EA1), Gelo_36 (EA1), Gershwin_36 (EA1), Greys_37 (EA1), Gubbabump_36 (EA1), Hamlet_36 (EA1), HanSolo_36 (EA1), HankSprout_37 (EA1), HerculesXL_35 (EA11), HungryHenry_36 (EA1), Ilzat_36 (EA1), Inventa_37 (EA1), Ioannes_37 (EA1), Janus167_36 (EA1), JasonD_41 (EA1), JasperRussell_36 (EA1), Jenos_40 (EA1), Jerbirus_37 (EA1), JeriBeth_37 (EA1), Kale_36 (EA1), KannH_36 (EA1), KingJulien_36 (EA1), Klimt_36 (EA1), Knox_37 (EA1), Kurt1_37 (EA1), Leafus_36 (EA1), Lovelyunicorn_37 (EA1), Ludgate_37 (EA1), MaeLinda_37 (EA1), ManRay_36 (EA1), Martin_38 (EA1), McGalleon_39 (EA1), MillyPhilly_37 (EA1), MonChoix_35 (EA1), MrWorldwide_37 (EA1), Nagem_37 (EA1), Nattles_36 (EA1), Oats_36 (EA1), OldNelly_37 (EA1), Oxtober96_37 (EA1), Papafritta_36 (EA1), ParleG_37 (EA1), Peep_37 (EA1), Peppino_36 (EA1), Pherferi_37 (EA1), Phiderman_37 (EA1), Phireproof_37 (EA1), PhredFlintston_37 (EA1), Phriends_37 (EA1), Pocket_36 (EA1), PuppyEggo_37 (EA1), Raccoon_36 (EA1), Rapheph_37 (EA1), Raptor_37 (EA1), Redfield_36 (EA1), Renzie_37 (EA1), Riyhil_37 (EA1), Robinson_37 (EA1), Rog141_36 (EA1), RosieMae_37 (EA1), SJay_37 (EA1), Schimmels22_35 (EA11), Schnapsidee_36 (EA1), Scissor2024_35 (EA11), Sedgewig_36 (EA1), ShaiHulud_37 (EA1), Shee_37 (EA1), SoilGremlin_37 (EA1), SonOfLevi_36 (EA1), Stanktossa_37 (EA1), StingRay_36 (EA1), StirfryIV_36 (EA1), Stormbreaker8_36 (EA1), Strathdee_37 (EA1), Superfresh_37 (EA1), Symere_37 (EA1), Teagan_37 (EA1), TeddyBear_36 (EA1), Tenda_36 (EA1), Thompsone_37 (EA1), Thorongil_37 (EA1), TinSulphur_37 (EA1), Tinyman4_35 (EA11), Velene_37 (EA1), Vispistious_37 (EA1), WestPM_33 (EA11), WildNOut_37 (EA1), Winzigespinne_36 (EA1), Zada_37 (EA1),

Start 18:

- Found in 66 of 199 (33.2%) of genes in pham
- Manual Annotations of this start: 57 of 179
- Called 100.0% of time when present
- Phage (with cluster) where this start called: Alakazam_35 (EA5), Andromedas_35 (EA2), BaronJohn_35 (EA5), BouleyBill_34 (EA4), Bustleton_34 (EA4), CaptainRex_34 (EA5), Carostasia_33 (EA10), Casey_33 (EA3), Cheeto1_37 (EA9), Chepli_36 (EA6), ChickenKing_36 (EA9), ChikPic_35 (EA2), Clock_34 (EA5), ColaCorta_35 (EA2), Eleri_35 (EA2), Finny_35 (EA2), Fulton_34 (EA5), GaeCeo_37 (EA9), Glamour_34 (EA2), Golden_34 (EA4), Greenlvy_34 (EA5), Guetzie_34 (EA4), HairyMan_34 (EA10), Hasitha_34 (EA5), Ixel_35 (EA11), Jemerald_37 (EA6), Jingles_34 (EA4), Juanyo_34 (EA10), Juicer_37 (EA6), KatChan_36 (EA6), Kauala_34 (EA4), Koji_34 (EA4), Librie_34 (EA5), LilTerminator_35 (EA5), Lucky3_34 (EA4), Luna18_36 (EA6), MCubed_35 (EA2), Mandalorian_33 (EA10), Morrigan_36 (EA6), Nebulous_34 (EA5), Neferthena_34 (EA5), NickSell_37 (EA1), Nucci_33 (EA10), PSirce_34 (EA2), Pajaza_33 (EA3), Phanita_34 (EA2), Pherbot_34 (EA4), Pikmin_33 (EA3), PrincePhergus_34 (EA4), QuadZero_34 (EA5), Quartz_34 (EA10), RenegadeRaider_35 (EA4), Sansa_34 (EA2), Saratos_35 (EA2), Schubert_34 (EA8), Shamu_35 (EA2), Sinatra_34 (EA4), SirVictor_34 (EA4), TatarkaPM_37 (EA1), TwoBits_33 (EA5), Wardwill_36 (EA5), WilliamStrong_35 (EA6), YuuY_35 (EA10), Zayuliv_34 (EA5), Zenitsu_35 (EA2), Zepp_35 (EA5),

Summary by clusters:

There are 12 clusters represented in this pham: UNK, EA11, EA10, EA, EA9, EA8, EA1, EA3, EA2, EA5, EA4, EA6,

Info for manual annotations of cluster EA:

- Start number 16 was manually annotated 1 time for cluster EA.

Info for manual annotations of cluster EA1:

- Start number 17 was manually annotated 117 times for cluster EA1.
- Start number 18 was manually annotated 2 times for cluster EA1.

Info for manual annotations of cluster EA10:

- Start number 18 was manually annotated 6 times for cluster EA10.

Info for manual annotations of cluster EA11:

- Start number 17 was manually annotated 4 times for cluster EA11.
- Start number 18 was manually annotated 1 time for cluster EA11.

Info for manual annotations of cluster EA2:

- Start number 18 was manually annotated 11 times for cluster EA2.

Info for manual annotations of cluster EA3:

- Start number 18 was manually annotated 3 times for cluster EA3.

Info for manual annotations of cluster EA4:

- Start number 18 was manually annotated 11 times for cluster EA4.

Info for manual annotations of cluster EA5:

- Start number 18 was manually annotated 12 times for cluster EA5.

Info for manual annotations of cluster EA6:

- Start number 18 was manually annotated 7 times for cluster EA6.

Info for manual annotations of cluster EA8:

- Start number 18 was manually annotated 1 time for cluster EA8.

Info for manual annotations of cluster EA9:

- Start number 18 was manually annotated 3 times for cluster EA9.

Gene Information:

Gene: Acosta_38 Start: 26305, Stop: 25637, Start Num: 17

Candidate Starts for Acosta_38:

(3, 26488), (6, 26449), (7, 26434), (Start: 17 @26305 has 121 MA's), (27, 26158), (29, 26131), (33, 26092), (36, 26062), (39, 26050), (41, 26011), (57, 25870), (65, 25822), (70, 25771), (71, 25762), (76, 25666),

Gene: Agente005_37 Start: 26137, Stop: 25469, Start Num: 17

Candidate Starts for Agente005_37:

(Start: 17 @26137 has 121 MA's), (25, 26002), (46, 25783), (57, 25702), (59, 25696), (64, 25660), (65, 25654), (72, 25567),

Gene: Alakazam_35 Start: 25472, Stop: 24777, Start Num: 18

Candidate Starts for Alakazam_35:

(Start: 18 @25472 has 57 MA's), (19, 25439), (21, 25388), (24, 25343), (29, 25298), (45, 25136), (47, 25109), (51, 25088), (57, 25010), (60, 25001), (65, 24962), (69, 24926), (72, 24875),

Gene: AlexAdler_37 Start: 25901, Stop: 25233, Start Num: 17

Candidate Starts for AlexAdler_37:

(Start: 17 @25901 has 121 MA's), (27, 25754), (29, 25727), (36, 25658), (39, 25646), (57, 25466), (65, 25418), (67, 25397), (76, 25262),

Gene: Alyxandracam_37 Start: 25911, Stop: 25243, Start Num: 17

Candidate Starts for Alyxandracam_37:

(Start: 17 @25911 has 121 MA's), (27, 25764), (29, 25737), (36, 25668), (39, 25656), (57, 25476), (65, 25428), (72, 25341), (76, 25272),

Gene: Andromedas_35 Start: 25511, Stop: 24843, Start Num: 18

Candidate Starts for Andromedas_35:

(12, 25589), (14, 25544), (Start: 18 @25511 has 57 MA's), (27, 25364), (29, 25337), (33, 25298), (36, 25268), (39, 25256), (57, 25076), (65, 25028), (68, 25001), (72, 24941),

Gene: Anilorac_37 Start: 25981, Stop: 25313, Start Num: 17

Candidate Starts for Anilorac_37:

(Start: 17 @25981 has 121 MA's), (25, 25846), (46, 25627), (57, 25546), (59, 25540), (64, 25504), (65, 25498), (72, 25411),

Gene: Antoinette_37 Start: 25898, Stop: 25230, Start Num: 17

Candidate Starts for Antoinette_37:

(Start: 17 @25898 has 121 MA's), (27, 25751), (29, 25724), (36, 25655), (39, 25643), (57, 25463), (65, 25415), (67, 25394), (76, 25259),

Gene: AranulaLuti_36 Start: 25595, Stop: 24927, Start Num: 17

Candidate Starts for AranulaLuti_36:

(Start: 17 @25595 has 121 MA's), (27, 25448), (29, 25421), (36, 25352), (39, 25340), (57, 25160), (65, 25112), (67, 25091), (72, 25025), (76, 24956),

Gene: Asta_36 Start: 25608, Stop: 24940, Start Num: 17

Candidate Starts for Asta_36:

(Start: 17 @25608 has 121 MA's), (27, 25461), (29, 25434), (36, 25365), (39, 25353), (57, 25173), (65, 25125), (72, 25038), (76, 24969),

Gene: Aubergine_36 Start: 25608, Stop: 24940, Start Num: 17

Candidate Starts for Aubergine_36:

(Start: 17 @25608 has 121 MA's), (27, 25461), (29, 25434), (36, 25365), (39, 25353), (57, 25173), (65, 25125), (67, 25104), (72, 25038), (76, 24969),

Gene: AxiPup_37 Start: 25880, Stop: 25212, Start Num: 17

Candidate Starts for AxiPup_37:

(Start: 17 @25880 has 121 MA's), (27, 25733), (29, 25706), (36, 25637), (39, 25625), (57, 25445), (65, 25397), (67, 25376), (72, 25310), (76, 25241),

Gene: Baines_36 Start: 25598, Stop: 24930, Start Num: 17

Candidate Starts for Baines_36:

(Start: 17 @25598 has 121 MA's), (27, 25451), (29, 25424), (36, 25355), (39, 25343), (57, 25163), (65, 25115), (72, 25028), (76, 24959),

Gene: Balsa_36 Start: 26028, Stop: 25360, Start Num: 17

Candidate Starts for Balsa_36:

(Start: 17 @26028 has 121 MA's), (25, 25893), (46, 25674), (57, 25593), (64, 25551), (65, 25545), (72, 25458),

Gene: Bandik_37 Start: 25906, Stop: 25238, Start Num: 17

Candidate Starts for Bandik_37:

(Start: 17 @25906 has 121 MA's), (27, 25759), (29, 25732), (36, 25663), (39, 25651), (57, 25471), (65, 25423), (67, 25402), (72, 25336), (76, 25267),

Gene: BaronJohn_35 Start: 24387, Stop: 23692, Start Num: 18

Candidate Starts for BaronJohn_35:

(6, 24534), (7, 24519), (Start: 18 @24387 has 57 MA's), (19, 24354), (24, 24258), (33, 24174), (47, 24024), (57, 23925), (60, 23916), (65, 23877), (69, 23841), (72, 23790),

Gene: BeautPeep30_37 Start: 25912, Stop: 25244, Start Num: 17

Candidate Starts for BeautPeep30_37:

(Start: 17 @25912 has 121 MA's), (27, 25765), (29, 25738), (36, 25669), (39, 25657), (57, 25477), (65, 25429), (67, 25408), (76, 25273),

Gene: BeeBee8_37 Start: 26198, Stop: 25530, Start Num: 17

Candidate Starts for BeeBee8_37:

(Start: 17 @26198 has 121 MA's), (25, 26063), (46, 25844), (57, 25763), (64, 25721), (65, 25715), (72, 25628),

Gene: Benjalauren_37 Start: 25611, Stop: 24943, Start Num: 17

Candidate Starts for Benjalauren_37:

(Start: 17 @25611 has 121 MA's), (27, 25464), (29, 25437), (36, 25368), (39, 25356), (57, 25176), (65, 25128), (67, 25107), (72, 25041), (76, 24972),

Gene: BigRedClifford_37 Start: 25910, Stop: 25242, Start Num: 17

Candidate Starts for BigRedClifford_37:

(Start: 17 @25910 has 121 MA's), (27, 25763), (29, 25736), (36, 25667), (39, 25655), (57, 25475), (65, 25427), (67, 25406), (76, 25271),

Gene: Blage_37 Start: 25910, Stop: 25242, Start Num: 17

Candidate Starts for Blage_37:

(Start: 17 @25910 has 121 MA's), (27, 25763), (29, 25736), (36, 25667), (39, 25655), (57, 25475), (65, 25427), (67, 25406), (76, 25271),

Gene: BonesMcCoy_37 Start: 25910, Stop: 25242, Start Num: 17

Candidate Starts for BonesMcCoy_37:

(Start: 17 @25910 has 121 MA's), (27, 25763), (29, 25736), (36, 25667), (39, 25655), (57, 25475), (65, 25427), (67, 25406), (76, 25271),

Gene: Bonino_36 Start: 25584, Stop: 24916, Start Num: 17

Candidate Starts for Bonino_36:

(Start: 17 @25584 has 121 MA's), (27, 25437), (29, 25410), (36, 25341), (39, 25329), (57, 25149), (65, 25101), (72, 25014), (76, 24945),

Gene: BouleyBill_34 Start: 25365, Stop: 24700, Start Num: 18

Candidate Starts for BouleyBill_34:

(4, 25548), (9, 25479), (12, 25446), (15, 25398), (Start: 18 @25365 has 57 MA's), (25, 25230), (29, 25191), (36, 25122), (47, 25008), (55, 24954), (57, 24933), (60, 24924), (65, 24885), (66, 24876), (69, 24849), (72, 24798), (73, 24777),

Gene: Bustleton_34 Start: 25368, Stop: 24703, Start Num: 18

Candidate Starts for Bustleton_34:

(4, 25551), (9, 25482), (12, 25449), (15, 25401), (Start: 18 @25368 has 57 MA's), (25, 25233), (29, 25194), (36, 25125), (47, 25011), (55, 24957), (57, 24936), (60, 24927), (65, 24888), (66, 24879), (69, 24852), (72, 24801), (73, 24780),

Gene: Byron23_37 Start: 25909, Stop: 25241, Start Num: 17

Candidate Starts for Byron23_37:

(Start: 17 @25909 has 121 MA's), (27, 25762), (29, 25735), (36, 25666), (39, 25654), (57, 25474), (65, 25426), (67, 25405), (72, 25339), (76, 25270),

Gene: Calix_36 Start: 25591, Stop: 24923, Start Num: 17

Candidate Starts for Calix_36:

(Start: 17 @25591 has 121 MA's), (27, 25444), (29, 25417), (36, 25348), (39, 25336), (57, 25156), (65, 25108), (72, 25021), (76, 24952),

Gene: CaptainRex_34 Start: 23799, Stop: 23104, Start Num: 18

Candidate Starts for CaptainRex_34:

(6, 23946), (7, 23931), (Start: 18 @23799 has 57 MA's), (19, 23766), (24, 23670), (47, 23436), (57, 23337), (60, 23328), (65, 23289), (69, 23253), (72, 23202),

Gene: CarisSwetlik_40 Start: 26807, Stop: 26139, Start Num: 17

Candidate Starts for CarisSwetlik_40:

(3, 26990), (6, 26951), (7, 26936), (Start: 17 @26807 has 121 MA's), (28, 26654), (29, 26633), (32, 26597), (36, 26564), (39, 26552), (41, 26513), (57, 26372), (60, 26363), (65, 26324), (66, 26315), (70, 26273), (72, 26237), (76, 26168),

Gene: Carostasia_33 Start: 25201, Stop: 24530, Start Num: 18

Candidate Starts for Carostasia_33:

(8, 25318), (11, 25285), (13, 25240), (Start: 18 @25201 has 57 MA's), (24, 25072), (29, 25027), (45, 24865), (47, 24838), (48, 24835), (54, 24796), (57, 24763), (60, 24754), (65, 24715), (70, 24664), (72, 24628), (74, 24583), (76, 24559),

Gene: Casey_33 Start: 24761, Stop: 24096, Start Num: 18

Candidate Starts for Casey_33:

(6, 24908), (7, 24893), (Start: 18 @24761 has 57 MA's), (23, 24653), (31, 24572), (47, 24404), (50, 24386), (52, 24380), (61, 24314), (65, 24281), (66, 24272), (67, 24260), (72, 24194),

Gene: Chako_36 Start: 25595, Stop: 24927, Start Num: 17

Candidate Starts for Chako_36:

(Start: 17 @25595 has 121 MA's), (27, 25448), (29, 25421), (36, 25352), (39, 25340), (57, 25160), (65, 25112), (67, 25091), (72, 25025), (76, 24956),

Gene: Chamuel_36 Start: 25584, Stop: 24916, Start Num: 17

Candidate Starts for Chamuel_36:

(Start: 17 @25584 has 121 MA's), (27, 25437), (29, 25410), (36, 25341), (39, 25329), (57, 25149), (65, 25101), (72, 25014), (76, 24945),

Gene: Cheeto1_37 Start: 26043, Stop: 25378, Start Num: 18

Candidate Starts for Cheeto1_37:

(Start: 18 @26043 has 57 MA's), (33, 25830), (36, 25800), (38, 25794), (42, 25734), (47, 25686), (57, 25611), (60, 25602), (65, 25563), (66, 25554), (70, 25512), (72, 25476),

Gene: Chepli_36 Start: 25000, Stop: 24329, Start Num: 18

Candidate Starts for Chepli_36:

(8, 25114), (11, 25081), (13, 25036), (Start: 18 @25000 has 57 MA's), (19, 24967), (24, 24871), (29, 24826), (31, 24811), (45, 24664), (46, 24643), (56, 24565), (57, 24562), (60, 24553), (63, 24523), (65, 24514), (69, 24478), (72, 24427), (76, 24358),

Gene: ChickenKing_36 Start: 25959, Stop: 25294, Start Num: 18

Candidate Starts for ChickenKing_36:

(Start: 18 @25959 has 57 MA's), (33, 25746), (36, 25716), (42, 25650), (47, 25602), (57, 25527), (60, 25518), (65, 25479), (66, 25470), (70, 25428), (72, 25392),

Gene: ChikPic_35 Start: 25521, Stop: 24853, Start Num: 18

Candidate Starts for ChikPic_35:

(12, 25599), (14, 25554), (Start: 18 @25521 has 57 MA's), (27, 25374), (29, 25347), (33, 25308), (36, 25278), (39, 25266), (57, 25086), (65, 25038), (68, 25011), (72, 24951),

Gene: Christoph_36 Start: 25606, Stop: 24938, Start Num: 17

Candidate Starts for Christoph_36:

(Start: 17 @25606 has 121 MA's), (27, 25459), (29, 25432), (36, 25363), (39, 25351), (57, 25171), (65, 25123), (67, 25102), (72, 25036), (76, 24967),

Gene: Clancy_36 Start: 25640, Stop: 24972, Start Num: 17

Candidate Starts for Clancy_36:

(Start: 17 @25640 has 121 MA's), (27, 25493), (29, 25466), (36, 25397), (39, 25385), (57, 25205), (65, 25157), (67, 25136), (72, 25070), (76, 25001),

Gene: Clock_34 Start: 26629, Stop: 25934, Start Num: 18

Candidate Starts for Clock_34:

(7, 26758), (Start: 18 @26629 has 57 MA's), (19, 26596), (21, 26545), (24, 26500), (29, 26455), (33, 26416), (42, 26314), (47, 26266), (57, 26167), (60, 26158), (65, 26119), (69, 26083), (72, 26032),

Gene: ColaCorta_35 Start: 25511, Stop: 24843, Start Num: 18

Candidate Starts for ColaCorta_35:

(12, 25589), (14, 25544), (Start: 18 @25511 has 57 MA's), (27, 25364), (29, 25337), (33, 25298), (36, 25268), (39, 25256), (57, 25076), (65, 25028), (68, 25001), (72, 24941),

Gene: Convict_37 Start: 25910, Stop: 25242, Start Num: 17

Candidate Starts for Convict_37:

(Start: 17 @25910 has 121 MA's), (27, 25763), (29, 25736), (36, 25667), (39, 25655), (57, 25475), (65, 25427), (67, 25406), (76, 25271),

Gene: Dave_37 Start: 25898, Stop: 25230, Start Num: 17

Candidate Starts for Dave_37:

(Start: 17 @25898 has 121 MA's), (27, 25751), (29, 25724), (36, 25655), (39, 25643), (57, 25463), (65, 25415), (67, 25394), (76, 25259),

Gene: Delphidian_37 Start: 25909, Stop: 25241, Start Num: 17

Candidate Starts for Delphidian_37:

(Start: 17 @25909 has 121 MA's), (27, 25762), (29, 25735), (36, 25666), (39, 25654), (57, 25474), (65, 25426), (67, 25405), (76, 25270),

Gene: Den3_37 Start: 25915, Stop: 25247, Start Num: 17

Candidate Starts for Den3_37:

(Start: 17 @25915 has 121 MA's), (27, 25768), (29, 25741), (36, 25672), (39, 25660), (57, 25480), (65, 25432), (67, 25411), (76, 25276),

Gene: Dothraki_37 Start: 25906, Stop: 25238, Start Num: 17

Candidate Starts for Dothraki_37:

(Start: 17 @25906 has 121 MA's), (27, 25759), (29, 25732), (36, 25663), (39, 25651), (57, 25471), (65, 25423), (67, 25402), (72, 25336), (76, 25267),

Gene: Duocatuli_36 Start: 25595, Stop: 24927, Start Num: 17

Candidate Starts for Duocatuli_36:

(Start: 17 @25595 has 121 MA's), (27, 25448), (29, 25421), (36, 25352), (39, 25340), (57, 25160), (65, 25112), (67, 25091), (70, 25061), (72, 25025), (76, 24956),

Gene: Eleri_35 Start: 25512, Stop: 24844, Start Num: 18

Candidate Starts for Eleri_35:

(12, 25590), (14, 25545), (Start: 18 @25512 has 57 MA's), (27, 25365), (29, 25338), (33, 25299), (36, 25269), (39, 25257), (57, 25077), (65, 25029), (68, 25002), (72, 24942),

Gene: Endor_37 Start: 26257, Stop: 25589, Start Num: 17

Candidate Starts for Endor_37:

(Start: 17 @26257 has 121 MA's), (25, 26122), (46, 25903), (49, 25891), (57, 25822), (64, 25780), (65, 25774), (72, 25687),

Gene: Erla_36 Start: 25588, Stop: 24920, Start Num: 17

Candidate Starts for Erla_36:

(Start: 17 @25588 has 121 MA's), (27, 25441), (29, 25414), (36, 25345), (39, 25333), (57, 25153), (65, 25105), (72, 25018), (76, 24949),

Gene: Espinosa_36 Start: 25606, Stop: 24938, Start Num: 17

Candidate Starts for Espinosa_36:

(Start: 17 @25606 has 121 MA's), (27, 25459), (29, 25432), (36, 25363), (39, 25351), (57, 25171), (65, 25123), (67, 25102), (72, 25036), (76, 24967),

Gene: Etna_36 Start: 26039, Stop: 25371, Start Num: 17

Candidate Starts for Etna_36:

(Start: 17 @26039 has 121 MA's), (25, 25904), (46, 25685), (57, 25604), (64, 25562), (65, 25556), (72, 25469),

Gene: Etta_36 Start: 25592, Stop: 24924, Start Num: 17

Candidate Starts for Etta_36:

(Start: 17 @25592 has 121 MA's), (27, 25445), (29, 25418), (36, 25349), (39, 25337), (57, 25157), (65, 25109), (72, 25022), (76, 24953),

Gene: Exploradora_37 Start: 25595, Stop: 24927, Start Num: 17

Candidate Starts for Exploradora_37:

(Start: 17 @25595 has 121 MA's), (27, 25448), (29, 25421), (36, 25352), (39, 25340), (57, 25160), (65, 25112), (72, 25025), (76, 24956),

Gene: FarmerDoug_36 Start: 25888, Stop: 25220, Start Num: 17

Candidate Starts for FarmerDoug_36:

(Start: 17 @25888 has 121 MA's), (30, 25711), (44, 25564), (46, 25534), (57, 25453), (59, 25447), (64, 25411), (65, 25405), (72, 25318),

Gene: Figueroism_37 Start: 25900, Stop: 25232, Start Num: 17

Candidate Starts for Figueroism_37:

(Start: 17 @25900 has 121 MA's), (27, 25753), (29, 25726), (36, 25657), (39, 25645), (57, 25465), (65, 25417), (67, 25396), (72, 25330), (76, 25261),

Gene: Finny_35 Start: 25552, Stop: 24884, Start Num: 18

Candidate Starts for Finny_35:

(12, 25630), (14, 25585), (Start: 18 @25552 has 57 MA's), (27, 25405), (29, 25378), (33, 25339), (36, 25309), (39, 25297), (57, 25117), (65, 25069), (68, 25042), (72, 24982),

Gene: Fulton_34 Start: 23800, Stop: 23105, Start Num: 18

Candidate Starts for Fulton_34:

(6, 23947), (7, 23932), (Start: 18 @23800 has 57 MA's), (19, 23767), (24, 23671), (47, 23437), (57, 23338), (60, 23329), (65, 23290), (69, 23254), (72, 23203),

Gene: GaeCeo_37 Start: 26192, Stop: 25527, Start Num: 18

Candidate Starts for GaeCeo_37:

(Start: 18 @26192 has 57 MA's), (33, 25979), (36, 25949), (42, 25883), (47, 25835), (57, 25760), (60, 25751), (65, 25712), (66, 25703), (70, 25661), (72, 25625),

Gene: GardenB_36 Start: 26006, Stop: 25338, Start Num: 17

Candidate Starts for GardenB_36:

(Start: 17 @26006 has 121 MA's), (25, 25871), (46, 25652), (57, 25571), (59, 25565), (64, 25529), (65, 25523), (72, 25436),

Gene: Garey24_36 Start: 25574, Stop: 24906, Start Num: 17

Candidate Starts for Garey24_36:

(Start: 17 @25574 has 121 MA's), (27, 25427), (29, 25400), (36, 25331), (39, 25319), (57, 25139), (65, 25091), (67, 25070), (72, 25004), (76, 24935),

Gene: Gargoyle_37 Start: 25915, Stop: 25247, Start Num: 17

Candidate Starts for Gargoyle_37:

(Start: 17 @25915 has 121 MA's), (27, 25768), (29, 25741), (36, 25672), (39, 25660), (57, 25480), (65, 25432), (67, 25411), (72, 25345), (76, 25276),

Gene: Gelo_36 Start: 25598, Stop: 24930, Start Num: 17

Candidate Starts for Gelo_36:

(Start: 17 @25598 has 121 MA's), (27, 25451), (29, 25424), (36, 25355), (39, 25343), (57, 25163), (65, 25115), (72, 25028), (76, 24959),

Gene: Gershwin_36 Start: 25608, Stop: 24940, Start Num: 17

Candidate Starts for Gershwin_36:

(Start: 17 @25608 has 121 MA's), (27, 25461), (29, 25434), (36, 25365), (39, 25353), (57, 25173), (65, 25125), (72, 25038), (76, 24969),

Gene: Glamour_34 Start: 25503, Stop: 24835, Start Num: 18

Candidate Starts for Glamour_34:

(12, 25581), (14, 25536), (Start: 18 @25503 has 57 MA's), (27, 25356), (29, 25329), (33, 25290), (36, 25260), (39, 25248), (57, 25068), (65, 25020), (68, 24993), (72, 24933),

Gene: Golden_34 Start: 25460, Stop: 24795, Start Num: 18

Candidate Starts for Golden_34:

(4, 25646), (9, 25574), (10, 25565), (12, 25541), (14, 25496), (15, 25493), (Start: 18 @25460 has 57 MA's), (19, 25427), (20, 25412), (25, 25325), (29, 25286), (33, 25247), (36, 25217), (45, 25130), (47, 25103), (55, 25049), (57, 25028), (60, 25019), (65, 24980), (69, 24944), (72, 24893), (73, 24872),

Gene: Greenlvy_34 Start: 24389, Stop: 23694, Start Num: 18

Candidate Starts for Greenlvy_34:

(6, 24536), (7, 24521), (Start: 18 @24389 has 57 MA's), (19, 24356), (24, 24260), (33, 24176), (47, 24026), (57, 23927), (60, 23918), (65, 23879), (69, 23843), (72, 23792),

Gene: Greys_37 Start: 25908, Stop: 25240, Start Num: 17

Candidate Starts for Greys_37:

(Start: 17 @25908 has 121 MA's), (27, 25761), (29, 25734), (36, 25665), (39, 25653), (57, 25473), (65, 25425), (67, 25404), (72, 25338), (76, 25269),

Gene: Gubbabump_36 Start: 25588, Stop: 24920, Start Num: 17

Candidate Starts for Gubbabump_36:

(Start: 17 @25588 has 121 MA's), (27, 25441), (29, 25414), (36, 25345), (39, 25333), (57, 25153), (65, 25105), (67, 25084), (72, 25018), (76, 24949),

Gene: Guetzie_34 Start: 25445, Stop: 24780, Start Num: 18

Candidate Starts for Guetzie_34:

(4, 25631), (9, 25559), (10, 25550), (12, 25526), (14, 25481), (15, 25478), (Start: 18 @25445 has 57 MA's), (19, 25412), (25, 25310), (29, 25271), (33, 25232), (36, 25202), (45, 25115), (47, 25088), (55, 25034), (57, 25013), (60, 25004), (65, 24965), (69, 24929), (72, 24878), (73, 24857),

Gene: HairyMan_34 Start: 24804, Stop: 24130, Start Num: 18

Candidate Starts for HairyMan_34:

(5, 24984), (9, 24918), (12, 24885), (Start: 18 @24804 has 57 MA's), (27, 24648), (33, 24582), (34, 24564), (36, 24552), (39, 24540), (44, 24474), (45, 24465), (57, 24360), (65, 24312), (67, 24291), (68, 24285), (69, 24276), (70, 24261), (72, 24225),

Gene: Hamlet_36 Start: 26037, Stop: 25369, Start Num: 17

Candidate Starts for Hamlet_36:

(Start: 17 @26037 has 121 MA's), (25, 25902), (46, 25683), (57, 25602), (64, 25560), (65, 25554), (72, 25467),

Gene: HanSolo_36 Start: 25595, Stop: 24927, Start Num: 17

Candidate Starts for HanSolo_36:

(Start: 17 @25595 has 121 MA's), (27, 25448), (29, 25421), (36, 25352), (39, 25340), (57, 25160), (65, 25112), (67, 25091), (72, 25025), (76, 24956),

Gene: HankSprout_37 Start: 25475, Stop: 24807, Start Num: 17

Candidate Starts for HankSprout_37:

(Start: 17 @25475 has 121 MA's), (27, 25328), (29, 25301), (36, 25232), (39, 25220), (57, 25040), (65, 24992), (67, 24971), (72, 24905), (76, 24836),

Gene: Hasitha_34 Start: 23812, Stop: 23117, Start Num: 18

Candidate Starts for Hasitha_34:

(6, 23959), (7, 23944), (Start: 18 @23812 has 57 MA's), (19, 23779), (24, 23683), (33, 23599), (47, 23449), (57, 23350), (60, 23341), (65, 23302), (69, 23266), (72, 23215),

Gene: HerculesXL_35 Start: 24250, Stop: 23582, Start Num: 17

Candidate Starts for HerculesXL_35:

(Start: 17 @24250 has 121 MA's), (19, 24217), (21, 24166), (27, 24103), (29, 24076), (36, 24007), (39, 23995), (54, 23848), (57, 23815), (65, 23767), (70, 23716), (72, 23680), (75, 23629),

Gene: HungryHenry_36 Start: 25600, Stop: 24932, Start Num: 17

Candidate Starts for HungryHenry_36:

(Start: 17 @25600 has 121 MA's), (27, 25453), (29, 25426), (36, 25357), (39, 25345), (57, 25165), (65, 25117), (67, 25096), (72, 25030), (76, 24961),

Gene: Ilzat_36 Start: 25611, Stop: 24943, Start Num: 17

Candidate Starts for Ilzat_36:

(Start: 17 @25611 has 121 MA's), (27, 25464), (29, 25437), (36, 25368), (39, 25356), (57, 25176), (65, 25128), (67, 25107), (72, 25041), (76, 24972),

Gene: Inventa_37 Start: 25906, Stop: 25238, Start Num: 17

Candidate Starts for Inventa_37:

(Start: 17 @25906 has 121 MA's), (27, 25759), (29, 25732), (36, 25663), (39, 25651), (57, 25471), (65, 25423), (67, 25402), (72, 25336), (76, 25267),

Gene: loannes_37 Start: 25910, Stop: 25242, Start Num: 17

Candidate Starts for loannes_37:

(Start: 17 @25910 has 121 MA's), (27, 25763), (29, 25736), (36, 25667), (39, 25655), (57, 25475), (65, 25427), (67, 25406), (72, 25340), (76, 25271),

Gene: Ixel_35 Start: 24233, Stop: 23535, Start Num: 18

Candidate Starts for Ixel_35:

(Start: 18 @24233 has 57 MA's), (21, 24149), (25, 24098), (27, 24086), (29, 24059), (36, 23984), (37, 23981), (39, 23972), (43, 23909), (47, 23867), (52, 23843), (57, 23768), (58, 23765), (60, 23759), (64, 23726), (65, 23720), (69, 23684), (75, 23582),

Gene: Janus167_36 Start: 25595, Stop: 24927, Start Num: 17

Candidate Starts for Janus167_36:

(Start: 17 @25595 has 121 MA's), (27, 25448), (29, 25421), (36, 25352), (39, 25340), (57, 25160), (65, 25112), (67, 25091), (72, 25025), (76, 24956),

Gene: JasonD_41 Start: 26455, Stop: 25787, Start Num: 17

Candidate Starts for JasonD_41:

(Start: 17 @26455 has 121 MA's), (27, 26308), (29, 26281), (33, 26242), (36, 26212), (39, 26200), (41, 26161), (57, 26020), (65, 25972), (66, 25963), (70, 25921), (71, 25912), (72, 25885), (76, 25816),

Gene: JasperRussell_36 Start: 25595, Stop: 24927, Start Num: 17

Candidate Starts for JasperRussell_36:

(Start: 17 @25595 has 121 MA's), (27, 25448), (29, 25421), (36, 25352), (39, 25340), (57, 25160), (65, 25112), (67, 25091), (72, 25025), (76, 24956),

Gene: Jemerald_37 Start: 26163, Stop: 25489, Start Num: 18

Candidate Starts for Jemerald_37:

(Start: 18 @26163 has 57 MA's), (21, 26079), (29, 25989), (33, 25944), (34, 25926), (39, 25902), (41, 25863), (44, 25836), (52, 25773), (54, 25755), (57, 25722), (65, 25674), (66, 25665), (69, 25638), (70,

25623), (71, 25614), (72, 25587),

Gene: Jenos_40 Start: 27104, Stop: 26436, Start Num: 17

Candidate Starts for Jenos_40:

(3, 27287), (6, 27248), (7, 27233), (Start: 17 @27104 has 121 MA's), (28, 26951), (29, 26930), (32, 26894), (36, 26861), (39, 26849), (41, 26810), (57, 26669), (60, 26660), (65, 26621), (66, 26612), (70, 26570), (72, 26534), (76, 26465),

Gene: Jerbirus_37 Start: 25595, Stop: 24927, Start Num: 17

Candidate Starts for Jerbirus_37:

(Start: 17 @25595 has 121 MA's), (27, 25448), (29, 25421), (36, 25352), (39, 25340), (57, 25160), (65, 25112), (67, 25091), (72, 25025), (76, 24956),

Gene: JeriBeth_37 Start: 25458, Stop: 24790, Start Num: 17

Candidate Starts for JeriBeth_37:

(Start: 17 @25458 has 121 MA's), (27, 25311), (29, 25284), (36, 25215), (39, 25203), (57, 25023), (65, 24975), (67, 24954), (72, 24888), (76, 24819),

Gene: Jingles_34 Start: 25362, Stop: 24697, Start Num: 18

Candidate Starts for Jingles_34:

(9, 25476), (12, 25443), (15, 25395), (Start: 18 @25362 has 57 MA's), (25, 25227), (29, 25188), (36, 25119), (47, 25005), (55, 24951), (57, 24930), (60, 24921), (65, 24882), (66, 24873), (69, 24846), (72, 24795), (73, 24774),

Gene: Juanyo_34 Start: 25282, Stop: 24611, Start Num: 18

Candidate Starts for Juanyo_34:

(11, 25366), (13, 25321), (Start: 18 @25282 has 57 MA's), (24, 25153), (29, 25108), (35, 25042), (45, 24946), (47, 24919), (48, 24916), (57, 24844), (60, 24835), (65, 24796), (72, 24709),

Gene: Juicer_37 Start: 26163, Stop: 25489, Start Num: 18

Candidate Starts for Juicer_37:

(Start: 18 @26163 has 57 MA's), (21, 26079), (29, 25989), (33, 25944), (34, 25926), (39, 25902), (41, 25863), (44, 25836), (52, 25773), (54, 25755), (57, 25722), (65, 25674), (66, 25665), (69, 25638), (70, 25623), (71, 25614), (72, 25587),

Gene: Kale_36 Start: 25610, Stop: 24942, Start Num: 17

Candidate Starts for Kale_36:

(Start: 17 @25610 has 121 MA's), (27, 25463), (29, 25436), (36, 25367), (39, 25355), (57, 25175), (65, 25127), (72, 25040), (76, 24971),

Gene: KannH_36 Start: 25595, Stop: 24927, Start Num: 17

Candidate Starts for KannH_36:

(Start: 17 @25595 has 121 MA's), (27, 25448), (29, 25421), (36, 25352), (39, 25340), (57, 25160), (65, 25112), (67, 25091), (72, 25025), (76, 24956),

Gene: KatChan_36 Start: 25012, Stop: 24341, Start Num: 18

Candidate Starts for KatChan_36:

(8, 25126), (11, 25093), (13, 25048), (Start: 18 @25012 has 57 MA's), (19, 24979), (24, 24883), (29, 24838), (31, 24823), (45, 24676), (46, 24655), (56, 24577), (57, 24574), (60, 24565), (63, 24535), (65, 24526), (69, 24490), (72, 24439), (76, 24370),

Gene: Kauala_34 Start: 25348, Stop: 24683, Start Num: 18

Candidate Starts for Kauala_34:

(4, 25531), (9, 25462), (12, 25429), (15, 25381), (Start: 18 @25348 has 57 MA's), (25, 25213), (35, 25108), (36, 25105), (55, 24937), (57, 24916), (60, 24907), (64, 24874), (65, 24868), (69, 24832), (72, 24781), (73, 24760),

Gene: KingJulien_36 Start: 26027, Stop: 25359, Start Num: 17

Candidate Starts for KingJulien_36:

(Start: 17 @26027 has 121 MA's), (25, 25892), (46, 25673), (57, 25592), (64, 25550), (65, 25544), (72, 25457),

Gene: Klimt_36 Start: 25590, Stop: 24922, Start Num: 17

Candidate Starts for Klimt_36:

(Start: 17 @25590 has 121 MA's), (27, 25443), (29, 25416), (36, 25347), (39, 25335), (57, 25155), (65, 25107), (72, 25020), (76, 24951),

Gene: Knox_37 Start: 25910, Stop: 25242, Start Num: 17

Candidate Starts for Knox_37:

(Start: 17 @25910 has 121 MA's), (27, 25763), (29, 25736), (36, 25667), (39, 25655), (57, 25475), (65, 25427), (67, 25406), (76, 25271),

Gene: Koji_34 Start: 25541, Stop: 24876, Start Num: 18

Candidate Starts for Koji_34:

(4, 25724), (9, 25655), (12, 25622), (15, 25574), (Start: 18 @25541 has 57 MA's), (25, 25406), (29, 25367), (36, 25298), (47, 25184), (55, 25130), (57, 25109), (60, 25100), (65, 25061), (66, 25052), (69, 25025), (72, 24974), (73, 24953),

Gene: Kurt1_37 Start: 25906, Stop: 25238, Start Num: 17

Candidate Starts for Kurt1_37:

(Start: 17 @25906 has 121 MA's), (27, 25759), (29, 25732), (36, 25663), (39, 25651), (57, 25471), (65, 25423), (67, 25402), (72, 25336), (76, 25267),

Gene: Leafus_36 Start: 26172, Stop: 25504, Start Num: 17

Candidate Starts for Leafus_36:

(Start: 17 @26172 has 121 MA's), (25, 26037), (46, 25818), (57, 25737), (64, 25695), (65, 25689), (72, 25602),

Gene: Librie_34 Start: 23799, Stop: 23104, Start Num: 18

Candidate Starts for Librie_34:

(6, 23946), (7, 23931), (Start: 18 @23799 has 57 MA's), (19, 23766), (24, 23670), (47, 23436), (57, 23337), (60, 23328), (65, 23289), (69, 23253), (72, 23202),

Gene: LilTerminator_35 Start: 23821, Stop: 23126, Start Num: 18

Candidate Starts for LilTerminator_35:

(6, 23968), (7, 23953), (Start: 18 @23821 has 57 MA's), (19, 23788), (24, 23692), (33, 23608), (47, 23458), (57, 23359), (60, 23350), (65, 23311), (69, 23275), (72, 23224),

Gene: Lovelyunicorn_37 Start: 25911, Stop: 25243, Start Num: 17

Candidate Starts for Lovelyunicorn_37:

(Start: 17 @25911 has 121 MA's), (27, 25764), (29, 25737), (36, 25668), (39, 25656), (57, 25476), (65, 25428), (67, 25407), (76, 25272),

Gene: Lucky3_34 Start: 25460, Stop: 24795, Start Num: 18

Candidate Starts for Lucky3_34:

(4, 25646), (9, 25574), (10, 25565), (12, 25541), (14, 25496), (15, 25493), (Start: 18 @25460 has 57 MA's), (19, 25427), (20, 25412), (25, 25325), (29, 25286), (33, 25247), (36, 25217), (45, 25130), (47, 25103), (55, 25049), (57, 25028), (60, 25019), (65, 24980), (69, 24944), (72, 24893), (73, 24872),

Gene: Ludgate_37 Start: 25906, Stop: 25238, Start Num: 17

Candidate Starts for Ludgate_37:

(Start: 17 @25906 has 121 MA's), (27, 25759), (29, 25732), (36, 25663), (39, 25651), (57, 25471), (65, 25423), (72, 25336), (76, 25267),

Gene: Luna18_36 Start: 25012, Stop: 24341, Start Num: 18

Candidate Starts for Luna18_36:

(8, 25126), (11, 25093), (13, 25048), (Start: 18 @25012 has 57 MA's), (19, 24979), (24, 24883), (29, 24838), (31, 24823), (45, 24676), (46, 24655), (56, 24577), (57, 24574), (60, 24565), (63, 24535), (65, 24526), (69, 24490), (72, 24439), (76, 24370),

Gene: MCubed_35 Start: 25528, Stop: 24860, Start Num: 18

Candidate Starts for MCubed_35:

(12, 25606), (14, 25561), (Start: 18 @25528 has 57 MA's), (27, 25381), (29, 25354), (33, 25315), (36, 25285), (39, 25273), (57, 25093), (65, 25045), (68, 25018), (72, 24958),

Gene: MaeLinda_37 Start: 25910, Stop: 25242, Start Num: 17

Candidate Starts for MaeLinda_37:

(Start: 17 @25910 has 121 MA's), (27, 25763), (29, 25736), (36, 25667), (39, 25655), (57, 25475), (65, 25427), (67, 25406), (76, 25271),

Gene: ManRay_36 Start: 25608, Stop: 24940, Start Num: 17

Candidate Starts for ManRay_36:

(Start: 17 @25608 has 121 MA's), (27, 25461), (29, 25434), (36, 25365), (39, 25353), (57, 25173), (65, 25125), (67, 25104), (72, 25038), (76, 24969),

Gene: Mandalorian_33 Start: 25211, Stop: 24540, Start Num: 18

Candidate Starts for Mandalorian_33:

(8, 25328), (11, 25295), (13, 25250), (Start: 18 @25211 has 57 MA's), (24, 25082), (29, 25037), (45, 24875), (47, 24848), (48, 24845), (57, 24773), (60, 24764), (65, 24725), (70, 24674), (72, 24638), (74, 24593), (76, 24569),

Gene: Martin_38 Start: 25915, Stop: 25247, Start Num: 17

Candidate Starts for Martin_38:

(Start: 17 @25915 has 121 MA's), (27, 25768), (29, 25741), (36, 25672), (39, 25660), (57, 25480), (65, 25432), (67, 25411), (72, 25345), (76, 25276),

Gene: McGalleon_39 Start: 27315, Stop: 26647, Start Num: 17

Candidate Starts for McGalleon_39:

(7, 27444), (Start: 17 @27315 has 121 MA's), (29, 27141), (32, 27105), (36, 27072), (39, 27060), (41, 27021), (57, 26880), (60, 26871), (65, 26832), (66, 26823), (70, 26781), (72, 26745), (76, 26676),

Gene: Mercedes_31 Start: 22779, Stop: 22108, Start Num: 16

Candidate Starts for Mercedes_31:

(Start: 16 @22779 has 1 MA's), (21, 22695), (22, 22674), (24, 22650), (29, 22605), (45, 22443), (46, 22422), (47, 22416), (57, 22341), (65, 22293), (67, 22272), (72, 22206), (76, 22137),

Gene: MillyPhilly_37 Start: 25903, Stop: 25235, Start Num: 17

Candidate Starts for MillyPhilly_37:

(Start: 17 @25903 has 121 MA's), (27, 25756), (29, 25729), (36, 25660), (39, 25648), (57, 25468), (65, 25420), (67, 25399), (72, 25333), (76, 25264),

Gene: MonChoix_35 Start: 25920, Stop: 25252, Start Num: 17

Candidate Starts for MonChoix_35:

(Start: 17 @25920 has 121 MA's), (27, 25773), (29, 25746), (36, 25677), (39, 25665), (57, 25485), (65, 25437), (66, 25428), (68, 25410), (72, 25350), (73, 25329), (76, 25281),

Gene: Morrigan_36 Start: 25033, Stop: 24362, Start Num: 18

Candidate Starts for Morrigan_36:

(2, 25228), (8, 25147), (11, 25114), (13, 25069), (Start: 18 @25033 has 57 MA's), (19, 25000), (24, 24904), (29, 24859), (45, 24697), (46, 24676), (56, 24598), (57, 24595), (60, 24586), (63, 24556), (65, 24547), (72, 24460), (76, 24391),

Gene: MrWorldwide_37 Start: 25913, Stop: 25245, Start Num: 17

Candidate Starts for MrWorldwide_37:

(Start: 17 @25913 has 121 MA's), (27, 25766), (29, 25739), (36, 25670), (39, 25658), (57, 25478), (65, 25430), (67, 25409), (72, 25343), (76, 25274),

Gene: Nagem_37 Start: 25906, Stop: 25238, Start Num: 17

Candidate Starts for Nagem_37:

(Start: 17 @25906 has 121 MA's), (27, 25759), (29, 25732), (36, 25663), (39, 25651), (57, 25471), (65, 25423), (72, 25336), (76, 25267),

Gene: Nattles_36 Start: 25595, Stop: 24927, Start Num: 17

Candidate Starts for Nattles_36:

(Start: 17 @25595 has 121 MA's), (27, 25448), (29, 25421), (36, 25352), (39, 25340), (57, 25160), (65, 25112), (72, 25025), (76, 24956),

Gene: Nebulous_34 Start: 26810, Stop: 26115, Start Num: 18

Candidate Starts for Nebulous_34:

(7, 26939), (Start: 18 @26810 has 57 MA's), (19, 26777), (21, 26726), (24, 26681), (29, 26636), (33, 26597), (47, 26447), (57, 26348), (65, 26300), (69, 26264), (72, 26213),

Gene: Neferthema_34 Start: 25896, Stop: 25201, Start Num: 18

Candidate Starts for Neferthema_34:

(Start: 18 @25896 has 57 MA's), (24, 25767), (29, 25722), (33, 25683), (47, 25533), (52, 25509), (53, 25494), (57, 25434), (65, 25386), (69, 25350), (72, 25299), (74, 25254), (76, 25230),

Gene: NickSell_37 Start: 25912, Stop: 25244, Start Num: 18

Candidate Starts for NickSell_37:

(Start: 18 @25912 has 57 MA's), (27, 25765), (29, 25738), (36, 25669), (39, 25657), (57, 25477), (65, 25429), (67, 25408), (72, 25342), (76, 25273),

Gene: Nucci_33 Start: 25206, Stop: 24535, Start Num: 18

Candidate Starts for Nucci_33:

(8, 25323), (11, 25290), (13, 25245), (Start: 18 @25206 has 57 MA's), (24, 25077), (29, 25032), (45, 24870), (47, 24843), (48, 24840), (57, 24768), (60, 24759), (65, 24720), (70, 24669), (72, 24633), (74, 24588), (76, 24564),

Gene: Oats_36 Start: 25608, Stop: 24940, Start Num: 17

Candidate Starts for Oats_36:

(Start: 17 @25608 has 121 MA's), (27, 25461), (29, 25434), (36, 25365), (39, 25353), (57, 25173), (65, 25125), (67, 25104), (72, 25038), (76, 24969),

Gene: OldNelly_37 Start: 25912, Stop: 25244, Start Num: 17

Candidate Starts for OldNelly_37:

(Start: 17 @25912 has 121 MA's), (27, 25765), (29, 25738), (36, 25669), (39, 25657), (57, 25477), (65, 25429), (67, 25408), (76, 25273),

Gene: Oxtober96_37 Start: 25911, Stop: 25243, Start Num: 17

Candidate Starts for Oxtober96_37:

(Start: 17 @25911 has 121 MA's), (27, 25764), (29, 25737), (36, 25668), (39, 25656), (57, 25476), (65, 25428), (67, 25407), (76, 25272),

Gene: PSirce_34 Start: 25515, Stop: 24847, Start Num: 18

Candidate Starts for PSirce_34:

(12, 25593), (14, 25548), (Start: 18 @25515 has 57 MA's), (27, 25368), (29, 25341), (33, 25302), (36, 25272), (39, 25260), (57, 25080), (65, 25032), (68, 25005), (72, 24945),

Gene: Pajaza_33 Start: 24761, Stop: 24096, Start Num: 18

Candidate Starts for Pajaza_33:

(6, 24908), (7, 24893), (Start: 18 @24761 has 57 MA's), (23, 24653), (31, 24572), (47, 24404), (50, 24386), (52, 24380), (61, 24314), (65, 24281), (66, 24272), (67, 24260), (72, 24194),

Gene: Papafritta_36 Start: 25616, Stop: 24948, Start Num: 17

Candidate Starts for Papafritta_36:

(Start: 17 @25616 has 121 MA's), (27, 25469), (29, 25442), (36, 25373), (39, 25361), (57, 25181), (65, 25133), (67, 25112), (72, 25046), (76, 24977),

Gene: ParleG_37 Start: 25913, Stop: 25245, Start Num: 17

Candidate Starts for ParleG_37:

(Start: 17 @25913 has 121 MA's), (27, 25766), (29, 25739), (36, 25670), (39, 25658), (57, 25478), (65, 25430), (67, 25409), (72, 25343), (76, 25274),

Gene: Peep_37 Start: 25898, Stop: 25230, Start Num: 17

Candidate Starts for Peep_37:

(Start: 17 @25898 has 121 MA's), (27, 25751), (29, 25724), (36, 25655), (39, 25643), (57, 25463), (65, 25415), (67, 25394), (76, 25259),

Gene: Peppino_36 Start: 26020, Stop: 25352, Start Num: 17

Candidate Starts for Peppino_36:

(Start: 17 @26020 has 121 MA's), (25, 25885), (46, 25666), (57, 25585), (64, 25543), (65, 25537), (72, 25450),

Gene: Phanita_34 Start: 25495, Stop: 24827, Start Num: 18

Candidate Starts for Phanita_34:

(12, 25573), (14, 25528), (Start: 18 @25495 has 57 MA's), (27, 25348), (29, 25321), (33, 25282), (36, 25252), (39, 25240), (57, 25060), (65, 25012), (68, 24985), (72, 24925),

Gene: Pherbot_34 Start: 25355, Stop: 24690, Start Num: 18

Candidate Starts for Pherbot_34:

(4, 25538), (9, 25469), (12, 25436), (15, 25388), (Start: 18 @25355 has 57 MA's), (25, 25220), (29, 25181), (36, 25112), (47, 24998), (55, 24944), (57, 24923), (60, 24914), (65, 24875), (66, 24866), (69, 24839), (72, 24788), (73, 24767),

Gene: Pherferi_37 Start: 25906, Stop: 25238, Start Num: 17

Candidate Starts for Pherferi_37:

(Start: 17 @25906 has 121 MA's), (27, 25759), (29, 25732), (36, 25663), (39, 25651), (57, 25471), (65, 25423), (67, 25402), (72, 25336), (76, 25267),

Gene: Phiderman_37 Start: 25903, Stop: 25235, Start Num: 17

Candidate Starts for Phiderman_37:

(Start: 17 @25903 has 121 MA's), (27, 25756), (29, 25729), (36, 25660), (39, 25648), (57, 25468), (65, 25420), (67, 25399), (72, 25333), (76, 25264),

Gene: Phireproof_37 Start: 25912, Stop: 25244, Start Num: 17

Candidate Starts for Phireproof_37:

(Start: 17 @25912 has 121 MA's), (27, 25765), (29, 25738), (36, 25669), (39, 25657), (57, 25477), (65, 25429), (67, 25408), (76, 25273),

Gene: PhredFlintston_37 Start: 25906, Stop: 25238, Start Num: 17

Candidate Starts for PhredFlintston_37:

(Start: 17 @25906 has 121 MA's), (27, 25759), (29, 25732), (36, 25663), (39, 25651), (57, 25471), (65, 25423), (67, 25402), (72, 25336), (76, 25267),

Gene: Phriends_37 Start: 25912, Stop: 25244, Start Num: 17

Candidate Starts for Phriends_37:

(Start: 17 @25912 has 121 MA's), (27, 25765), (29, 25738), (36, 25669), (39, 25657), (57, 25477), (65, 25429), (67, 25408), (76, 25273),

Gene: Pikmin_33 Start: 24761, Stop: 24096, Start Num: 18

Candidate Starts for Pikmin_33:

(6, 24908), (7, 24893), (Start: 18 @24761 has 57 MA's), (23, 24653), (31, 24572), (47, 24404), (50, 24386), (52, 24380), (61, 24314), (65, 24281), (66, 24272), (67, 24260), (72, 24194),

Gene: Pocket_36 Start: 25599, Stop: 24931, Start Num: 17

Candidate Starts for Pocket_36:

(Start: 17 @25599 has 121 MA's), (27, 25452), (29, 25425), (36, 25356), (39, 25344), (57, 25164), (65, 25116), (72, 25029), (76, 24960),

Gene: PrincePhergus_34 Start: 25370, Stop: 24705, Start Num: 18

Candidate Starts for PrincePhergus_34:

(4, 25553), (9, 25484), (12, 25451), (15, 25403), (Start: 18 @25370 has 57 MA's), (25, 25235), (29, 25196), (36, 25127), (47, 25013), (55, 24959), (57, 24938), (60, 24929), (65, 24890), (66, 24881), (69, 24854), (72, 24803), (73, 24782),

Gene: PuppyEggo_37 Start: 25913, Stop: 25245, Start Num: 17

Candidate Starts for PuppyEggo_37:

(Start: 17 @25913 has 121 MA's), (27, 25766), (29, 25739), (36, 25670), (39, 25658), (57, 25478), (65, 25430), (67, 25409), (72, 25343), (76, 25274),

Gene: QuadZero_34 Start: 23826, Stop: 23131, Start Num: 18

Candidate Starts for QuadZero_34:

(6, 23973), (7, 23958), (Start: 18 @23826 has 57 MA's), (19, 23793), (24, 23697), (33, 23613), (47, 23463), (57, 23364), (60, 23355), (65, 23316), (69, 23280), (72, 23229),

Gene: Quartz_34 Start: 25324, Stop: 24653, Start Num: 18

Candidate Starts for Quartz_34:

(8, 25441), (11, 25408), (13, 25363), (Start: 18 @25324 has 57 MA's), (24, 25195), (29, 25150), (45, 24988), (47, 24961), (48, 24958), (54, 24919), (57, 24886), (60, 24877), (65, 24838), (70, 24787), (72, 24751), (74, 24706), (76, 24682),

Gene: Raccoon_36 Start: 25995, Stop: 25327, Start Num: 17

Candidate Starts for Raccoon_36:

(Start: 17 @25995 has 121 MA's), (25, 25860), (46, 25641), (57, 25560), (64, 25518), (65, 25512), (72, 25425),

Gene: Rapheph_37 Start: 25906, Stop: 25238, Start Num: 17

Candidate Starts for Rapheph_37:

(Start: 17 @25906 has 121 MA's), (27, 25759), (29, 25732), (36, 25663), (39, 25651), (57, 25471), (65, 25423), (67, 25402), (72, 25336), (76, 25267),

Gene: Raptor_37 Start: 25910, Stop: 25242, Start Num: 17

Candidate Starts for Raptor_37:

(Start: 17 @25910 has 121 MA's), (27, 25763), (29, 25736), (36, 25667), (39, 25655), (57, 25475), (65, 25427), (72, 25340), (76, 25271),

Gene: Redfield_36 Start: 26027, Stop: 25359, Start Num: 17

Candidate Starts for Redfield_36:

(Start: 17 @26027 has 121 MA's), (25, 25892), (46, 25673), (57, 25592), (64, 25550), (65, 25544), (72, 25457),

Gene: RenegadeRaider_35 Start: 25237, Stop: 24572, Start Num: 18

Candidate Starts for RenegadeRaider_35:

(4, 25420), (9, 25351), (12, 25318), (15, 25270), (Start: 18 @25237 has 57 MA's), (25, 25102), (29, 25063), (36, 24994), (47, 24880), (55, 24826), (57, 24805), (60, 24796), (65, 24757), (66, 24748), (69, 24721), (72, 24670), (73, 24649),

Gene: Renzie_37 Start: 25898, Stop: 25230, Start Num: 17

Candidate Starts for Renzie_37:

(Start: 17 @25898 has 121 MA's), (27, 25751), (29, 25724), (36, 25655), (39, 25643), (57, 25463), (65, 25415), (67, 25394), (76, 25259),

Gene: Riyhil_37 Start: 25916, Stop: 25248, Start Num: 17

Candidate Starts for Riyhil_37:

(Start: 17 @25916 has 121 MA's), (27, 25769), (29, 25742), (36, 25673), (39, 25661), (57, 25481), (65, 25433), (67, 25412), (72, 25346), (76, 25277),

Gene: Robinson_37 Start: 25904, Stop: 25236, Start Num: 17

Candidate Starts for Robinson_37:

(Start: 17 @25904 has 121 MA's), (27, 25757), (29, 25730), (36, 25661), (39, 25649), (57, 25469), (65, 25421), (76, 25265),

Gene: Rog141_36 Start: 25595, Stop: 24927, Start Num: 17

Candidate Starts for Rog141_36:

(Start: 17 @25595 has 121 MA's), (27, 25448), (29, 25421), (36, 25352), (39, 25340), (57, 25160), (65, 25112), (67, 25091), (72, 25025), (76, 24956),

Gene: RosieMae_37 Start: 25653, Stop: 24985, Start Num: 17

Candidate Starts for RosieMae_37:

(Start: 17 @25653 has 121 MA's), (27, 25506), (29, 25479), (36, 25410), (39, 25398), (57, 25218), (65, 25170), (72, 25083), (76, 25014),

Gene: SJay_37 Start: 25907, Stop: 25239, Start Num: 17

Candidate Starts for SJay_37:

(Start: 17 @25907 has 121 MA's), (27, 25760), (29, 25733), (36, 25664), (39, 25652), (57, 25472), (65, 25424), (72, 25337), (76, 25268),

Gene: Sansa_34 Start: 25589, Stop: 24921, Start Num: 18

Candidate Starts for Sansa_34:

(14, 25622), (Start: 18 @25589 has 57 MA's), (27, 25442), (29, 25415), (33, 25376), (36, 25346), (39, 25334), (57, 25154), (65, 25106), (68, 25079), (72, 25019),

Gene: Saratos_35 Start: 25497, Stop: 24829, Start Num: 18

Candidate Starts for Saratos_35:

(12, 25575), (14, 25530), (Start: 18 @25497 has 57 MA's), (27, 25350), (29, 25323), (33, 25284), (36, 25254), (39, 25242), (57, 25062), (65, 25014), (68, 24987), (72, 24927),

Gene: Schimmels22_35 Start: 24624, Stop: 23956, Start Num: 17

Candidate Starts for Schimmels22_35:

(Start: 17 @24624 has 121 MA's), (19, 24591), (21, 24540), (27, 24477), (29, 24450), (36, 24381), (39, 24369), (54, 24222), (57, 24189), (65, 24141), (70, 24090), (72, 24054), (75, 24003),

Gene: Schnapsidee_36 Start: 26033, Stop: 25365, Start Num: 17

Candidate Starts for Schnapsidee_36:

(Start: 17 @26033 has 121 MA's), (25, 25898), (46, 25679), (57, 25598), (64, 25556), (65, 25550), (72, 25463),

Gene: Schubert_34 Start: 25315, Stop: 24650, Start Num: 18

Candidate Starts for Schubert_34:

(Start: 18 @25315 has 57 MA's), (26, 25177), (32, 25105), (33, 25102), (41, 25021), (45, 24985), (50, 24940), (58, 24880), (65, 24835), (70, 24784), (72, 24748),

Gene: Scissor2024_35 Start: 24261, Stop: 23593, Start Num: 17

Candidate Starts for Scissor2024_35:

(Start: 17 @24261 has 121 MA's), (19, 24228), (21, 24177), (27, 24114), (29, 24087), (36, 24018), (39, 24006), (54, 23859), (57, 23826), (60, 23817), (65, 23778), (70, 23727), (72, 23691), (75, 23640),

Gene: Sedgewig_36 Start: 25593, Stop: 24925, Start Num: 17

Candidate Starts for Sedgewig_36:

(Start: 17 @25593 has 121 MA's), (27, 25446), (29, 25419), (36, 25350), (39, 25338), (57, 25158), (65, 25110), (67, 25089), (72, 25023), (76, 24954),

Gene: ShaiHulud_37 Start: 25910, Stop: 25242, Start Num: 17

Candidate Starts for ShaiHulud_37:

(Start: 17 @25910 has 121 MA's), (27, 25763), (29, 25736), (36, 25667), (39, 25655), (57, 25475), (65, 25427), (67, 25406), (76, 25271),

Gene: Shamu_35 Start: 25518, Stop: 24850, Start Num: 18

Candidate Starts for Shamu_35:

(12, 25596), (14, 25551), (Start: 18 @25518 has 57 MA's), (27, 25371), (29, 25344), (33, 25305), (36, 25275), (39, 25263), (57, 25083), (65, 25035), (68, 25008), (72, 24948),

Gene: Shee_37 Start: 25903, Stop: 25235, Start Num: 17

Candidate Starts for Shee_37:

(Start: 17 @25903 has 121 MA's), (27, 25756), (29, 25729), (36, 25660), (39, 25648), (57, 25468), (65, 25420), (72, 25333), (76, 25264),

Gene: Sinatra_34 Start: 25366, Stop: 24701, Start Num: 18

Candidate Starts for Sinatra_34:

(4, 25549), (9, 25480), (12, 25447), (15, 25399), (Start: 18 @25366 has 57 MA's), (25, 25231), (29, 25192), (36, 25123), (47, 25009), (55, 24955), (57, 24934), (60, 24925), (65, 24886), (66, 24877), (69, 24850), (72, 24799), (73, 24778),

Gene: SirVictor_34 Start: 25445, Stop: 24780, Start Num: 18

Candidate Starts for SirVictor_34:

(1, 25676), (4, 25631), (9, 25559), (10, 25550), (12, 25526), (14, 25481), (15, 25478), (Start: 18 @25445 has 57 MA's), (19, 25412), (25, 25310), (29, 25271), (33, 25232), (36, 25202), (45, 25115), (47, 25088), (55, 25034), (57, 25013), (60, 25004), (65, 24965), (69, 24929), (72, 24878), (73, 24857),

Gene: SoilGremlin_37 Start: 25909, Stop: 25241, Start Num: 17

Candidate Starts for SoilGremlin_37:

(Start: 17 @25909 has 121 MA's), (27, 25762), (29, 25735), (36, 25666), (39, 25654), (57, 25474), (65, 25426), (67, 25405), (76, 25270),

Gene: SonOfLevi_36 Start: 25590, Stop: 24922, Start Num: 17

Candidate Starts for SonOfLevi_36:

(Start: 17 @25590 has 121 MA's), (27, 25443), (29, 25416), (36, 25347), (39, 25335), (57, 25155), (65, 25107), (72, 25020), (76, 24951),

Gene: Stanktossa_37 Start: 25906, Stop: 25238, Start Num: 17

Candidate Starts for Stanktossa_37:

(Start: 17 @25906 has 121 MA's), (27, 25759), (29, 25732), (36, 25663), (39, 25651), (57, 25471), (65, 25423), (67, 25402), (72, 25336), (76, 25267),

Gene: StingRay_36 Start: 25611, Stop: 24943, Start Num: 17

Candidate Starts for StingRay_36:

(Start: 17 @25611 has 121 MA's), (27, 25464), (29, 25437), (36, 25368), (39, 25356), (57, 25176), (65, 25128), (67, 25107), (72, 25041), (76, 24972),

Gene: StirfryIV_36 Start: 25604, Stop: 24936, Start Num: 17

Candidate Starts for StirfryIV_36:

(Start: 17 @25604 has 121 MA's), (27, 25457), (29, 25430), (36, 25361), (39, 25349), (57, 25169), (65, 25121), (67, 25100), (72, 25034), (76, 24965),

Gene: Stormbreaker8_36 Start: 26027, Stop: 25359, Start Num: 17

Candidate Starts for Stormbreaker8_36:

(Start: 17 @26027 has 121 MA's), (25, 25892), (46, 25673), (57, 25592), (64, 25550), (65, 25544), (72, 25457),

Gene: Strathdee_37 Start: 25911, Stop: 25243, Start Num: 17

Candidate Starts for Strathdee_37:

(Start: 17 @25911 has 121 MA's), (27, 25764), (29, 25737), (36, 25668), (39, 25656), (57, 25476), (65, 25428), (67, 25407), (72, 25341), (76, 25272),

Gene: Superfresh_37 Start: 25898, Stop: 25230, Start Num: 17

Candidate Starts for Superfresh_37:

(Start: 17 @25898 has 121 MA's), (27, 25751), (29, 25724), (36, 25655), (39, 25643), (57, 25463), (65, 25415), (67, 25394), (76, 25259),

Gene: Symere_37 Start: 25591, Stop: 24923, Start Num: 17

Candidate Starts for Symere_37:

(Start: 17 @25591 has 121 MA's), (27, 25444), (29, 25417), (36, 25348), (39, 25336), (57, 25156), (65, 25108), (67, 25087), (72, 25021), (76, 24952),

Gene: TatarkaPM_37 Start: 25912, Stop: 25244, Start Num: 18

Candidate Starts for TatarkaPM_37:

(Start: 18 @25912 has 57 MA's), (27, 25765), (29, 25738), (36, 25669), (39, 25657), (57, 25477), (65, 25429), (67, 25408), (72, 25342), (76, 25273),

Gene: Teagan_37 Start: 25906, Stop: 25238, Start Num: 17

Candidate Starts for Teagan_37:

(Start: 17 @25906 has 121 MA's), (27, 25759), (29, 25732), (36, 25663), (39, 25651), (57, 25471), (65, 25423), (67, 25402), (76, 25267),

Gene: TeddyBear_36 Start: 25608, Stop: 24940, Start Num: 17

Candidate Starts for TeddyBear_36:

(Start: 17 @25608 has 121 MA's), (27, 25461), (29, 25434), (36, 25365), (39, 25353), (57, 25173), (65, 25125), (72, 25038), (76, 24969),

Gene: Tenda_36 Start: 25606, Stop: 24938, Start Num: 17

Candidate Starts for Tenda_36:

(Start: 17 @25606 has 121 MA's), (27, 25459), (29, 25432), (36, 25363), (39, 25351), (57, 25171), (65, 25123), (67, 25102), (72, 25036), (76, 24967),

Gene: Thompsone_37 Start: 25913, Stop: 25245, Start Num: 17

Candidate Starts for Thompsone_37:

(Start: 17 @25913 has 121 MA's), (27, 25766), (29, 25739), (36, 25670), (39, 25658), (57, 25478), (65, 25430), (67, 25409), (76, 25274),

Gene: Thorongil_37 Start: 25913, Stop: 25245, Start Num: 17

Candidate Starts for Thorongil_37:

(Start: 17 @25913 has 121 MA's), (27, 25766), (29, 25739), (36, 25670), (39, 25658), (57, 25478), (65, 25430), (67, 25409), (72, 25343), (76, 25274),

Gene: TinSulphur_37 Start: 25912, Stop: 25244, Start Num: 17

Candidate Starts for TinSulphur_37:

(Start: 17 @25912 has 121 MA's), (27, 25765), (29, 25738), (36, 25669), (39, 25657), (57, 25477), (65, 25429), (67, 25408), (72, 25342), (76, 25273),

Gene: Tinyman4_35 Start: 24250, Stop: 23582, Start Num: 17

Candidate Starts for Tinyman4_35:

(Start: 17 @24250 has 121 MA's), (19, 24217), (21, 24166), (27, 24103), (29, 24076), (36, 24007), (39, 23995), (54, 23848), (57, 23815), (65, 23767), (70, 23716), (72, 23680), (75, 23629),

Gene: TwoBits_33 Start: 24236, Stop: 23541, Start Num: 18

Candidate Starts for TwoBits_33:

(6, 24383), (7, 24368), (Start: 18 @24236 has 57 MA's), (19, 24203), (24, 24107), (29, 24062), (35, 23996), (47, 23873), (57, 23774), (65, 23726), (69, 23690), (70, 23675), (71, 23666), (72, 23639), (76,

23570),

Gene: Velene_37 Start: 25911, Stop: 25243, Start Num: 17

Candidate Starts for Velene_37:

(Start: 17 @25911 has 121 MA's), (27, 25764), (29, 25737), (36, 25668), (39, 25656), (57, 25476), (65, 25428), (67, 25407), (76, 25272),

Gene: Vispistious_37 Start: 25913, Stop: 25245, Start Num: 17

Candidate Starts for Vispistious_37:

(Start: 17 @25913 has 121 MA's), (27, 25766), (29, 25739), (36, 25670), (39, 25658), (57, 25478), (65, 25430), (67, 25409), (72, 25343), (76, 25274),

Gene: Wardwill_36 Start: 23980, Stop: 23285, Start Num: 18

Candidate Starts for Wardwill_36:

(6, 24127), (7, 24112), (Start: 18 @23980 has 57 MA's), (19, 23947), (24, 23851), (33, 23767), (47, 23617), (57, 23518), (60, 23509), (65, 23470), (69, 23434), (72, 23383),

Gene: WestPM_33 Start: 24107, Stop: 23439, Start Num: 17

Candidate Starts for WestPM_33:

(Start: 17 @24107 has 121 MA's), (19, 24074), (21, 24023), (27, 23960), (29, 23933), (36, 23864), (39, 23852), (54, 23705), (57, 23672), (65, 23624), (70, 23573), (72, 23537), (75, 23486),

Gene: WildNOut_37 Start: 25910, Stop: 25242, Start Num: 17

Candidate Starts for WildNOut_37:

(Start: 17 @25910 has 121 MA's), (27, 25763), (29, 25736), (36, 25667), (39, 25655), (57, 25475), (65, 25427), (67, 25406), (72, 25340), (76, 25271),

Gene: WilliamStrong_35 Start: 25330, Stop: 24659, Start Num: 18

Candidate Starts for WilliamStrong_35:

(12, 25411), (14, 25366), (Start: 18 @25330 has 57 MA's), (25, 25195), (27, 25183), (48, 24964), (56, 24895), (57, 24892), (62, 24856), (63, 24853), (65, 24844), (66, 24835), (72, 24757), (76, 24688),

Gene: Winzigespinne_36 Start: 25594, Stop: 24926, Start Num: 17

Candidate Starts for Winzigespinne_36:

(Start: 17 @25594 has 121 MA's), (27, 25447), (29, 25420), (36, 25351), (39, 25339), (57, 25159), (65, 25111), (67, 25090), (72, 25024), (76, 24955),

Gene: YuuY_35 Start: 25953, Stop: 25282, Start Num: 18

Candidate Starts for YuuY_35:

(Start: 18 @25953 has 57 MA's), (24, 25824), (29, 25779), (40, 25674), (45, 25617), (47, 25590), (57, 25515), (60, 25506), (65, 25467), (70, 25416), (72, 25380), (76, 25311),

Gene: Zada_37 Start: 25882, Stop: 25214, Start Num: 17

Candidate Starts for Zada_37:

(Start: 17 @25882 has 121 MA's), (27, 25735), (29, 25708), (36, 25639), (39, 25627), (57, 25447), (65, 25399), (67, 25378), (72, 25312), (76, 25243),

Gene: Zayuliv_34 Start: 24399, Stop: 23704, Start Num: 18

Candidate Starts for Zayuliv_34:

(6, 24546), (7, 24531), (Start: 18 @24399 has 57 MA's), (19, 24366), (24, 24270), (33, 24186), (47, 24036), (57, 23937), (60, 23928), (65, 23889), (69, 23853), (72, 23802),

Gene: Zenitsu_35 Start: 25533, Stop: 24865, Start Num: 18

Candidate Starts for Zenitsu_35:

(12, 25611), (14, 25566), (Start: 18 @25533 has 57 MA's), (27, 25386), (29, 25359), (33, 25320), (36, 25290), (39, 25278), (57, 25098), (65, 25050), (68, 25023), (72, 24963),

Gene: Zepp_35 Start: 23858, Stop: 23163, Start Num: 18

Candidate Starts for Zepp_35:

(6, 24005), (7, 23990), (Start: 18 @23858 has 57 MA's), (19, 23825), (24, 23729), (33, 23645), (47, 23495), (57, 23396), (60, 23387), (65, 23348), (69, 23312), (72, 23261),