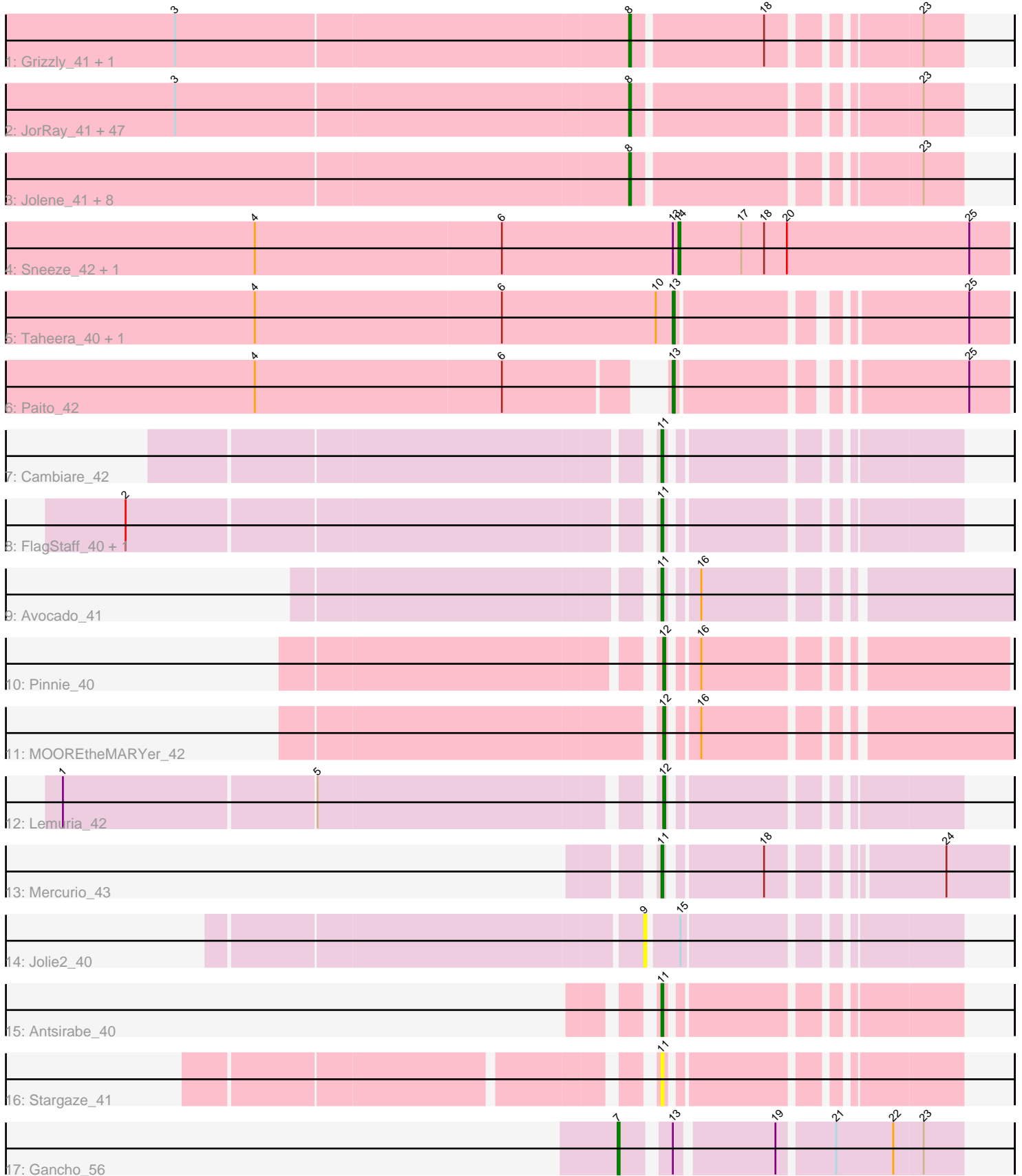


Pham 211045



Note: Tracks are now grouped by subcluster and scaled. Switching in subcluster is indicated by changes in track color. Track scale is now set by default to display the region 30 bp upstream of start 1 to 30 bp downstream of the last possible start. If this default region is judged to be packed too tightly with annotated starts, the track will be further scaled to only show that region of the ORF with annotated starts. This action will be indicated by adding "Zoomed" to the title. For starts, yellow indicates the location of called starts comprised solely of Glimmer/GeneMark auto-annotations, green indicates the location of called starts with at least 1 manual gene annotation.

## Pham 211045 Report

This analysis was run 02/22/25 on database version 588.

Pham number 211045 has 76 members, 7 are drafts.

Phages represented in each track:

- Track 1 : Grizzly\_41, Barkley26\_41
- Track 2 : JorRay\_41, Olga\_41, Cedasite\_41, Cherrybomb426\_41, LouisV14\_43, BQuat\_41, Halo\_41, Renaissance\_41, Zombie\_41, DMoney\_41, Phish\_41, Darionha\_41, Mowgli\_41, Peeb\_41, Hope\_41, AzulaCat\_41, BPs\_41, Avrafan\_41, Remy19\_41, CassieYates\_41, Frosty24\_41, Crespo\_41, Kareem\_41, Maliketh\_41, BruceB\_41, Angel\_41, ShaboiShabazz\_41, Coleslaw\_41, Marmie\_41, TinaBug\_41, Jane\_41, GoldenAsh\_41, Gideon\_41, Sweets\_41, OctaviousRex\_41, ZoMa\_41, Schiebel\_41, Gomashi\_41, Sizemore\_41, Kasen3\_41, Phreak\_41, CLED96\_41, Annihilator\_41, Wendigo\_41, PinkYoshi\_41, TomBrady\_41, Plagueis\_41, Camri\_41
- Track 3 : Jolene\_41, DNAlll\_0040, Liefie\_41, Jonghyun\_40, Hotshotbaby7\_41, Periodt\_41, Aroostook\_41, Chance64\_41, ECartman\_41
- Track 4 : Sneeze\_42, Rabbs\_42
- Track 5 : Taheera\_40, Terror\_40
- Track 6 : Paito\_42
- Track 7 : Cambiare\_42
- Track 8 : FlagStaff\_40, Pace1224\_40
- Track 9 : Avocado\_41
- Track 10 : Pinnie\_40
- Track 11 : MOOREtheMARYer\_42
- Track 12 : Lemuria\_42
- Track 13 : Mercurio\_43
- Track 14 : Jolie2\_40
- Track 15 : Antsirabe\_40
- Track 16 : Stargaze\_41
- Track 17 : Gancho\_56

### ***Summary of Final Annotations (See graph section above for start numbers):***

The start number called the most often in the published annotations is 8, it was called in 55 of the 69 non-draft genes in the pham.

Genes that call this "Most Annotated" start:

- Angel\_41, Annihilator\_41, Aroostook\_41, Avrafan\_41, AzulaCat\_41, BPs\_41, BQuat\_41, Barkley26\_41, BruceB\_41, CLED96\_41, Camri\_41, CassieYates\_41,

Cedasite\_41, Chance64\_41, Cherrybomb426\_41, Coleslaw\_41, Crespo\_41, DMoney\_41, DNAIII\_0040, Darionha\_41, ECartman\_41, Frosty24\_41, Gideon\_41, GoldenAsh\_41, Gomashi\_41, Grizzly\_41, Halo\_41, Hope\_41, Hotshotbaby7\_41, Jane\_41, Jolene\_41, Jonghyun\_40, JorRay\_41, Kareem\_41, Kasen3\_41, Liefie\_41, LouisV14\_43, Maliketh\_41, Marmie\_41, Mowgli\_41, OctaviousRex\_41, Olga\_41, Peeb\_41, Periodt\_41, Phish\_41, Phreak\_41, PinkYoshi\_41, Plagueis\_41, Remy19\_41, Renaissance\_41, Schiebel\_41, ShaboiShabazz\_41, Sizemore\_41, Sweets\_41, TinaBug\_41, TomBrady\_41, Wendigo\_41, ZoMa\_41, Zombie\_41,

Genes that have the "Most Annotated" start but do not call it:

- 

Genes that do not have the "Most Annotated" start:

- Antsirabe\_40, Avocado\_41, Cambiare\_42, FlagStaff\_40, Gancho\_56, Jolie2\_40, Lemuria\_42, MOOREtheMARYer\_42, Mercurio\_43, Pace1224\_40, Paito\_42, Pinnie\_40, Rabbs\_42, Sneeze\_42, Stargaze\_41, Taheera\_40, Terror\_40,

### Summary by start number:

Start 7:

- Found in 1 of 76 ( 1.3% ) of genes in pham
- Manual Annotations of this start: 1 of 69
- Called 100.0% of time when present
- Phage (with cluster) where this start called: Gancho\_56 (Q),

Start 8:

- Found in 59 of 76 ( 77.6% ) of genes in pham
- Manual Annotations of this start: 55 of 69
- Called 100.0% of time when present
- Phage (with cluster) where this start called: Angel\_41 (G1), Annihilator\_41 (G1), Aroostook\_41 (G1), Avrafan\_41 (G1), AzulaCat\_41 (G1), BPs\_41 (G1), BQuat\_41 (G1), Barkley26\_41 (G1), BruceB\_41 (G1), CLED96\_41 (G1), Camri\_41 (G1), CassieYates\_41 (G1), Cedasite\_41 (G1), Chance64\_41 (G1), Cherrybomb426\_41 (G1), Coleslaw\_41 (G1), Crespo\_41 (G1), DMoney\_41 (G1), DNAIII\_0040 (G1), Darionha\_41 (G1), ECartman\_41 (G1), Frosty24\_41 (G1), Gideon\_41 (G1), GoldenAsh\_41 (G1), Gomashi\_41 (G1), Grizzly\_41 (G1), Halo\_41 (G1), Hope\_41 (G1), Hotshotbaby7\_41 (G1), Jane\_41 (G1), Jolene\_41 (G1), Jonghyun\_40 (G1), JorRay\_41 (G1), Kareem\_41 (G1), Kasen3\_41 (G1), Liefie\_41 (G1), LouisV14\_43 (G1), Maliketh\_41 (G1), Marmie\_41 (G1), Mowgli\_41 (G1), OctaviousRex\_41 (G1), Olga\_41 (G1), Peeb\_41 (G1), Periodt\_41 (G1), Phish\_41 (G1), Phreak\_41 (G1), PinkYoshi\_41 (G1), Plagueis\_41 (G1), Remy19\_41 (G1), Renaissance\_41 (G1), Schiebel\_41 (G1), ShaboiShabazz\_41 (G1), Sizemore\_41 (G1), Sweets\_41 (G1), TinaBug\_41 (G1), TomBrady\_41 (G1), Wendigo\_41 (G1), ZoMa\_41 (G1), Zombie\_41 (G1),

Start 9:

- Found in 1 of 76 ( 1.3% ) of genes in pham
- No Manual Annotations of this start.
- Called 100.0% of time when present
- Phage (with cluster) where this start called: Jolie2\_40 (G4),

Start 11:

- Found in 7 of 76 ( 9.2% ) of genes in pham

- Manual Annotations of this start: 5 of 69
- Called 100.0% of time when present
- Phage (with cluster) where this start called: Antsirabe\_40 (G5), Avocado\_41 (G2), Cambiare\_42 (G2), FlagStaff\_40 (G2), Mercurio\_43 (G4), Pace1224\_40 (G2), Stargaze\_41 (G5),

Start 12:

- Found in 3 of 76 ( 3.9% ) of genes in pham
- Manual Annotations of this start: 3 of 69
- Called 100.0% of time when present
- Phage (with cluster) where this start called: Lemuria\_42 (G4), MOOREtheMARYer\_42 (G3), Pinnie\_40 (G3),

Start 13:

- Found in 6 of 76 ( 7.9% ) of genes in pham
- Manual Annotations of this start: 3 of 69
- Called 50.0% of time when present
- Phage (with cluster) where this start called: Paito\_42 (G1), Taheera\_40 (G1), Terror\_40 (G1),

Start 14:

- Found in 2 of 76 ( 2.6% ) of genes in pham
- Manual Annotations of this start: 2 of 69
- Called 100.0% of time when present
- Phage (with cluster) where this start called: Rabbs\_42 (G1), Sneeze\_42 (G1),

### **Summary by clusters:**

There are 6 clusters represented in this pham: G5, G4, G3, G2, G1, Q,

Info for manual annotations of cluster G1:

- Start number 8 was manually annotated 55 times for cluster G1.
- Start number 13 was manually annotated 3 times for cluster G1.
- Start number 14 was manually annotated 2 times for cluster G1.

Info for manual annotations of cluster G2:

- Start number 11 was manually annotated 3 times for cluster G2.

Info for manual annotations of cluster G3:

- Start number 12 was manually annotated 2 times for cluster G3.

Info for manual annotations of cluster G4:

- Start number 11 was manually annotated 1 time for cluster G4.
- Start number 12 was manually annotated 1 time for cluster G4.

Info for manual annotations of cluster G5:

- Start number 11 was manually annotated 1 time for cluster G5.

Info for manual annotations of cluster Q:

- Start number 7 was manually annotated 1 time for cluster Q.

**Gene Information:**

Gene: Angel\_41 Start: 31743, Stop: 31895, Start Num: 8

Candidate Starts for Angel\_41:

(3, 31509), (Start: 8 @31743 has 55 MA's), (23, 31875),

Gene: Annihilator\_41 Start: 31749, Stop: 31901, Start Num: 8

Candidate Starts for Annihilator\_41:

(3, 31515), (Start: 8 @31749 has 55 MA's), (23, 31881),

Gene: Antsirabe\_40 Start: 32314, Stop: 32445, Start Num: 11

Candidate Starts for Antsirabe\_40:

(Start: 11 @32314 has 5 MA's),

Gene: Aroostook\_41 Start: 31758, Stop: 31910, Start Num: 8

Candidate Starts for Aroostook\_41:

(Start: 8 @31758 has 55 MA's), (23, 31890),

Gene: Avocado\_41 Start: 32998, Stop: 33153, Start Num: 11

Candidate Starts for Avocado\_41:

(Start: 11 @32998 has 5 MA's), (16, 33010),

Gene: Avrafan\_41 Start: 31758, Stop: 31910, Start Num: 8

Candidate Starts for Avrafan\_41:

(3, 31524), (Start: 8 @31758 has 55 MA's), (23, 31890),

Gene: AzulaCat\_41 Start: 31758, Stop: 31910, Start Num: 8

Candidate Starts for AzulaCat\_41:

(3, 31524), (Start: 8 @31758 has 55 MA's), (23, 31890),

Gene: BPs\_41 Start: 31758, Stop: 31910, Start Num: 8

Candidate Starts for BPs\_41:

(3, 31524), (Start: 8 @31758 has 55 MA's), (23, 31890),

Gene: BQuat\_41 Start: 31749, Stop: 31901, Start Num: 8

Candidate Starts for BQuat\_41:

(3, 31515), (Start: 8 @31749 has 55 MA's), (23, 31881),

Gene: Barkley26\_41 Start: 31765, Stop: 31917, Start Num: 8

Candidate Starts for Barkley26\_41:

(3, 31531), (Start: 8 @31765 has 55 MA's), (18, 31831), (23, 31897),

Gene: BruceB\_41 Start: 31758, Stop: 31910, Start Num: 8

Candidate Starts for BruceB\_41:

(3, 31524), (Start: 8 @31758 has 55 MA's), (23, 31890),

Gene: CLED96\_41 Start: 31758, Stop: 31910, Start Num: 8

Candidate Starts for CLED96\_41:

(3, 31524), (Start: 8 @31758 has 55 MA's), (23, 31890),

Gene: Cambiare\_42 Start: 33265, Stop: 33396, Start Num: 11

Candidate Starts for Cambiare\_42:

(Start: 11 @33265 has 5 MA's),

Gene: Camri\_41 Start: 31758, Stop: 31910, Start Num: 8  
Candidate Starts for Camri\_41:  
(3, 31524), (Start: 8 @31758 has 55 MA's), (23, 31890),

Gene: CassieYates\_41 Start: 31758, Stop: 31910, Start Num: 8  
Candidate Starts for CassieYates\_41:  
(3, 31524), (Start: 8 @31758 has 55 MA's), (23, 31890),

Gene: Cedasite\_41 Start: 31758, Stop: 31910, Start Num: 8  
Candidate Starts for Cedasite\_41:  
(3, 31524), (Start: 8 @31758 has 55 MA's), (23, 31890),

Gene: Chance64\_41 Start: 31758, Stop: 31910, Start Num: 8  
Candidate Starts for Chance64\_41:  
(Start: 8 @31758 has 55 MA's), (23, 31890),

Gene: Cherrybomb426\_41 Start: 31758, Stop: 31910, Start Num: 8  
Candidate Starts for Cherrybomb426\_41:  
(3, 31524), (Start: 8 @31758 has 55 MA's), (23, 31890),

Gene: Coleslaw\_41 Start: 31749, Stop: 31901, Start Num: 8  
Candidate Starts for Coleslaw\_41:  
(3, 31515), (Start: 8 @31749 has 55 MA's), (23, 31881),

Gene: Crespo\_41 Start: 31759, Stop: 31911, Start Num: 8  
Candidate Starts for Crespo\_41:  
(3, 31525), (Start: 8 @31759 has 55 MA's), (23, 31891),

Gene: DMoney\_41 Start: 31758, Stop: 31910, Start Num: 8  
Candidate Starts for DMoney\_41:  
(3, 31524), (Start: 8 @31758 has 55 MA's), (23, 31890),

Gene: DNAlll\_0040 Start: 30392, Stop: 30544, Start Num: 8  
Candidate Starts for DNAlll\_0040:  
(Start: 8 @30392 has 55 MA's), (23, 30524),

Gene: Darionha\_41 Start: 31758, Stop: 31910, Start Num: 8  
Candidate Starts for Darionha\_41:  
(3, 31524), (Start: 8 @31758 has 55 MA's), (23, 31890),

Gene: ECartman\_41 Start: 31758, Stop: 31910, Start Num: 8  
Candidate Starts for ECartman\_41:  
(Start: 8 @31758 has 55 MA's), (23, 31890),

Gene: FlagStaff\_40 Start: 32423, Stop: 32554, Start Num: 11  
Candidate Starts for FlagStaff\_40:  
(2, 32162), (Start: 11 @32423 has 5 MA's),

Gene: Frosty24\_41 Start: 31758, Stop: 31910, Start Num: 8  
Candidate Starts for Frosty24\_41:  
(3, 31524), (Start: 8 @31758 has 55 MA's), (23, 31890),

Gene: Gancho\_56 Start: 41024, Stop: 41185, Start Num: 7  
Candidate Starts for Gancho\_56:  
(Start: 7 @41024 has 1 MA's), (Start: 13 @41045 has 3 MA's), (19, 41093), (21, 41120), (22, 41150),  
(23, 41165),

Gene: Gideon\_41 Start: 31758, Stop: 31910, Start Num: 8  
Candidate Starts for Gideon\_41:  
(3, 31524), (Start: 8 @31758 has 55 MA's), (23, 31890),

Gene: GoldenAsh\_41 Start: 31743, Stop: 31895, Start Num: 8  
Candidate Starts for GoldenAsh\_41:  
(3, 31509), (Start: 8 @31743 has 55 MA's), (23, 31875),

Gene: Gomashi\_41 Start: 31759, Stop: 31911, Start Num: 8  
Candidate Starts for Gomashi\_41:  
(3, 31525), (Start: 8 @31759 has 55 MA's), (23, 31891),

Gene: Grizzly\_41 Start: 31743, Stop: 31895, Start Num: 8  
Candidate Starts for Grizzly\_41:  
(3, 31509), (Start: 8 @31743 has 55 MA's), (18, 31809), (23, 31875),

Gene: Halo\_41 Start: 31753, Stop: 31905, Start Num: 8  
Candidate Starts for Halo\_41:  
(3, 31519), (Start: 8 @31753 has 55 MA's), (23, 31885),

Gene: Hope\_41 Start: 31758, Stop: 31910, Start Num: 8  
Candidate Starts for Hope\_41:  
(3, 31524), (Start: 8 @31758 has 55 MA's), (23, 31890),

Gene: Hotshotbaby7\_41 Start: 31758, Stop: 31910, Start Num: 8  
Candidate Starts for Hotshotbaby7\_41:  
(Start: 8 @31758 has 55 MA's), (23, 31890),

Gene: Jane\_41 Start: 31758, Stop: 31910, Start Num: 8  
Candidate Starts for Jane\_41:  
(3, 31524), (Start: 8 @31758 has 55 MA's), (23, 31890),

Gene: Jolene\_41 Start: 31758, Stop: 31910, Start Num: 8  
Candidate Starts for Jolene\_41:  
(Start: 8 @31758 has 55 MA's), (23, 31890),

Gene: Jolie2\_40 Start: 31370, Stop: 31513, Start Num: 9  
Candidate Starts for Jolie2\_40:  
(9, 31370), (15, 31385),

Gene: Jonghyun\_40 Start: 31758, Stop: 31910, Start Num: 8  
Candidate Starts for Jonghyun\_40:  
(Start: 8 @31758 has 55 MA's), (23, 31890),

Gene: JorRay\_41 Start: 31758, Stop: 31910, Start Num: 8  
Candidate Starts for JorRay\_41:  
(3, 31524), (Start: 8 @31758 has 55 MA's), (23, 31890),

Gene: Kareem\_41 Start: 31758, Stop: 31910, Start Num: 8  
Candidate Starts for Kareem\_41:  
(3, 31524), (Start: 8 @31758 has 55 MA's), (23, 31890),

Gene: Kasen3\_41 Start: 31744, Stop: 31896, Start Num: 8  
Candidate Starts for Kasen3\_41:  
(3, 31510), (Start: 8 @31744 has 55 MA's), (23, 31876),

Gene: Lemuria\_42 Start: 32730, Stop: 32861, Start Num: 12  
Candidate Starts for Lemuria\_42:  
(1, 32439), (5, 32568), (Start: 12 @32730 has 3 MA's),

Gene: Liefie\_41 Start: 31756, Stop: 31908, Start Num: 8  
Candidate Starts for Liefie\_41:  
(Start: 8 @31756 has 55 MA's), (23, 31888),

Gene: LouisV14\_43 Start: 34023, Stop: 34175, Start Num: 8  
Candidate Starts for LouisV14\_43:  
(3, 33789), (Start: 8 @34023 has 55 MA's), (23, 34155),

Gene: MOOREtheMARYer\_42 Start: 32962, Stop: 33117, Start Num: 12  
Candidate Starts for MOOREtheMARYer\_42:  
(Start: 12 @32962 has 3 MA's), (16, 32974),

Gene: Maliketh\_41 Start: 31758, Stop: 31910, Start Num: 8  
Candidate Starts for Maliketh\_41:  
(3, 31524), (Start: 8 @31758 has 55 MA's), (23, 31890),

Gene: Marmie\_41 Start: 31758, Stop: 31910, Start Num: 8  
Candidate Starts for Marmie\_41:  
(3, 31524), (Start: 8 @31758 has 55 MA's), (23, 31890),

Gene: Mercurio\_43 Start: 33230, Stop: 33382, Start Num: 11  
Candidate Starts for Mercurio\_43:  
(Start: 11 @33230 has 5 MA's), (18, 33275), (24, 33350),

Gene: Mowgli\_41 Start: 31758, Stop: 31910, Start Num: 8  
Candidate Starts for Mowgli\_41:  
(3, 31524), (Start: 8 @31758 has 55 MA's), (23, 31890),

Gene: OctaviousRex\_41 Start: 31758, Stop: 31910, Start Num: 8  
Candidate Starts for OctaviousRex\_41:  
(3, 31524), (Start: 8 @31758 has 55 MA's), (23, 31890),

Gene: Olga\_41 Start: 31758, Stop: 31910, Start Num: 8  
Candidate Starts for Olga\_41:  
(3, 31524), (Start: 8 @31758 has 55 MA's), (23, 31890),

Gene: Pace1224\_40 Start: 32423, Stop: 32554, Start Num: 11  
Candidate Starts for Pace1224\_40:  
(2, 32162), (Start: 11 @32423 has 5 MA's),

Gene: Paito\_42 Start: 31996, Stop: 32148, Start Num: 13



Candidate Starts for Paito\_42:

(4, 31801), (6, 31930), (Start: 13 @31996 has 3 MA's), (25, 32128),

Gene: Peeb\_41 Start: 31743, Stop: 31895, Start Num: 8

Candidate Starts for Peeb\_41:

(3, 31509), (Start: 8 @31743 has 55 MA's), (23, 31875),

Gene: Periodt\_41 Start: 31749, Stop: 31901, Start Num: 8

Candidate Starts for Periodt\_41:

(Start: 8 @31749 has 55 MA's), (23, 31881),

Gene: Phish\_41 Start: 31758, Stop: 31910, Start Num: 8

Candidate Starts for Phish\_41:

(3, 31524), (Start: 8 @31758 has 55 MA's), (23, 31890),

Gene: Phreak\_41 Start: 31758, Stop: 31910, Start Num: 8

Candidate Starts for Phreak\_41:

(3, 31524), (Start: 8 @31758 has 55 MA's), (23, 31890),

Gene: PinkYoshi\_41 Start: 31749, Stop: 31901, Start Num: 8

Candidate Starts for PinkYoshi\_41:

(3, 31515), (Start: 8 @31749 has 55 MA's), (23, 31881),

Gene: Pinnie\_40 Start: 32670, Stop: 32822, Start Num: 12

Candidate Starts for Pinnie\_40:

(Start: 12 @32670 has 3 MA's), (16, 32682),

Gene: Plagueis\_41 Start: 31578, Stop: 31730, Start Num: 8

Candidate Starts for Plagueis\_41:

(3, 31344), (Start: 8 @31578 has 55 MA's), (23, 31710),

Gene: Rabbs\_42 Start: 31925, Stop: 32098, Start Num: 14

Candidate Starts for Rabbs\_42:

(4, 31703), (6, 31832), (Start: 13 @31922 has 3 MA's), (Start: 14 @31925 has 2 MA's), (17, 31958), (18, 31970), (20, 31982), (25, 32078),

Gene: Remy19\_41 Start: 31758, Stop: 31910, Start Num: 8

Candidate Starts for Remy19\_41:

(3, 31524), (Start: 8 @31758 has 55 MA's), (23, 31890),

Gene: Renaissance\_41 Start: 31758, Stop: 31910, Start Num: 8

Candidate Starts for Renaissance\_41:

(3, 31524), (Start: 8 @31758 has 55 MA's), (23, 31890),

Gene: Schiebel\_41 Start: 31743, Stop: 31895, Start Num: 8

Candidate Starts for Schiebel\_41:

(3, 31509), (Start: 8 @31743 has 55 MA's), (23, 31875),

Gene: ShaboiShabazz\_41 Start: 31758, Stop: 31910, Start Num: 8

Candidate Starts for ShaboiShabazz\_41:

(3, 31524), (Start: 8 @31758 has 55 MA's), (23, 31890),

Gene: Sizemore\_41 Start: 31744, Stop: 31896, Start Num: 8

Candidate Starts for Sizemore\_41:  
(3, 31510), (Start: 8 @31744 has 55 MA's), (23, 31876),

Gene: Sneeze\_42 Start: 31924, Stop: 32097, Start Num: 14  
Candidate Starts for Sneeze\_42:  
(4, 31702), (6, 31831), (Start: 13 @31921 has 3 MA's), (Start: 14 @31924 has 2 MA's), (17, 31957),  
(18, 31969), (20, 31981), (25, 32077),

Gene: Stargaze\_41 Start: 32652, Stop: 32783, Start Num: 11  
Candidate Starts for Stargaze\_41:  
(Start: 11 @32652 has 5 MA's),

Gene: Sweets\_41 Start: 31753, Stop: 31905, Start Num: 8  
Candidate Starts for Sweets\_41:  
(3, 31519), (Start: 8 @31753 has 55 MA's), (23, 31885),

Gene: Taheera\_40 Start: 31449, Stop: 31601, Start Num: 13  
Candidate Starts for Taheera\_40:  
(4, 31230), (6, 31359), (10, 31440), (Start: 13 @31449 has 3 MA's), (25, 31581),

Gene: Terror\_40 Start: 31449, Stop: 31601, Start Num: 13  
Candidate Starts for Terror\_40:  
(4, 31230), (6, 31359), (10, 31440), (Start: 13 @31449 has 3 MA's), (25, 31581),

Gene: TinaBug\_41 Start: 31753, Stop: 31905, Start Num: 8  
Candidate Starts for TinaBug\_41:  
(3, 31519), (Start: 8 @31753 has 55 MA's), (23, 31885),

Gene: TomBrady\_41 Start: 31759, Stop: 31911, Start Num: 8  
Candidate Starts for TomBrady\_41:  
(3, 31525), (Start: 8 @31759 has 55 MA's), (23, 31891),

Gene: Wendigo\_41 Start: 31758, Stop: 31910, Start Num: 8  
Candidate Starts for Wendigo\_41:  
(3, 31524), (Start: 8 @31758 has 55 MA's), (23, 31890),

Gene: ZoMa\_41 Start: 31758, Stop: 31910, Start Num: 8  
Candidate Starts for ZoMa\_41:  
(3, 31524), (Start: 8 @31758 has 55 MA's), (23, 31890),

Gene: Zombie\_41 Start: 31758, Stop: 31910, Start Num: 8  
Candidate Starts for Zombie\_41:  
(3, 31524), (Start: 8 @31758 has 55 MA's), (23, 31890),