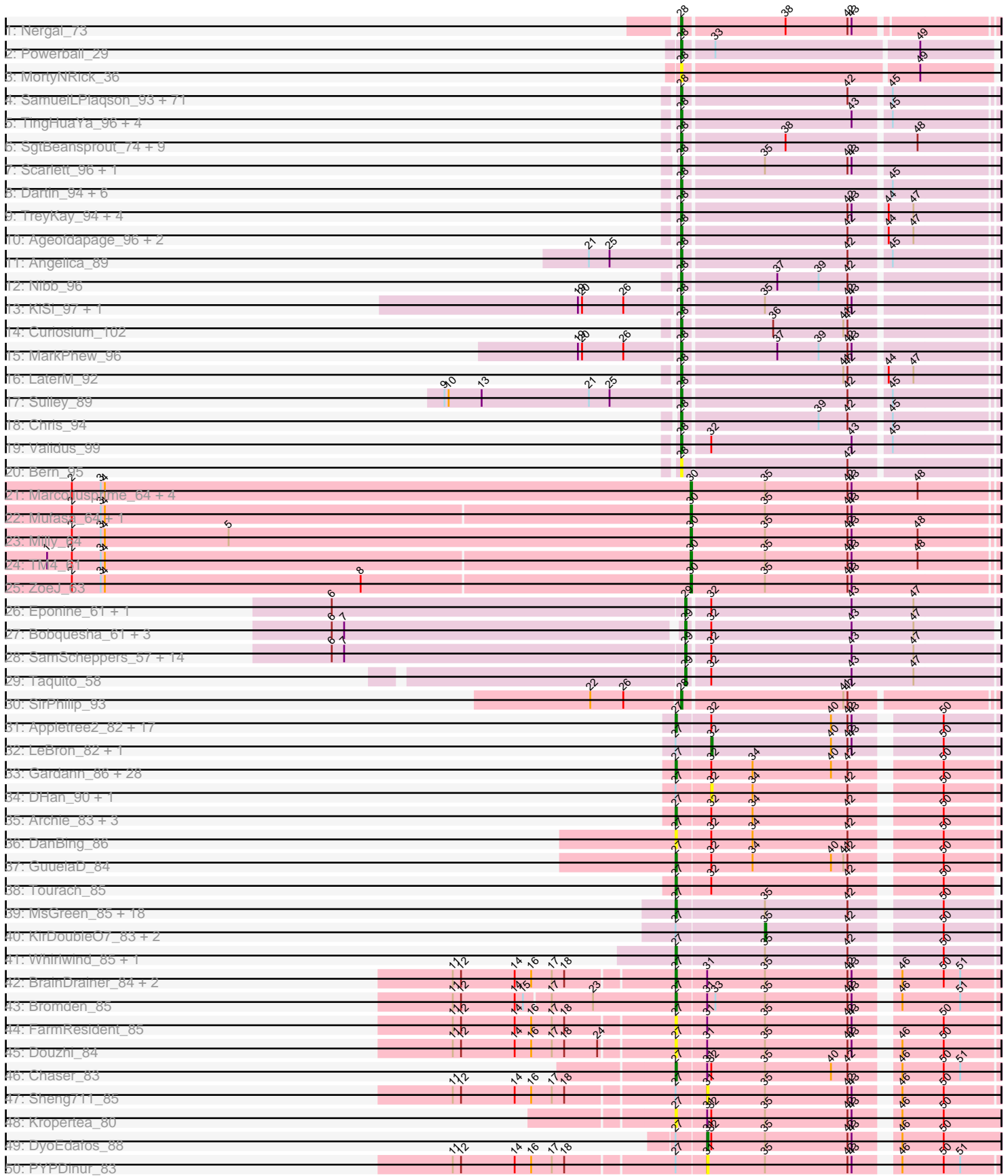


Pham 212266



Note: Tracks are now grouped by subcluster and scaled. Switching in subcluster is indicated by changes in track color. Track scale is now set by default to display the region 30 bp upstream of start 1 to 30 bp downstream of the last possible start. If this default region is judged to be packed too tightly with annotated starts, the track will be further scaled to only show that region of the ORF with annotated starts. This action will be indicated by adding "Zoomed" to the title. For starts, yellow indicates the location of called starts comprised solely of Glimmer/GeneMark auto-annotations, green indicates the location of called starts with at least 1 manual gene annotation.

Pham 212266 Report

This analysis was run 02/22/25 on database version 588.

Pham number 212266 has 244 members, 41 are drafts.

Phages represented in each track:

- Track 1 : Nergal_73
- Track 2 : Powerball_29
- Track 3 : MortyNRick_36
- Track 4 : SamuelLPlaqson_93, Mynx_93, CallaLilly_93, Blizzard_92, Belladonna_92, CheetoDust_92, Adonis_92, Veliki_93, Capricorn_92, HedwigODU_92, Bella96_93, Emerson_96, Ganymede_92, Beezoo_95, ShiaSurprise_94, Lunahalos_92, Homura_91, BEEST_92, Adephagia_91, Tachez_92, Padpat_97, MeaningOfLife_94, Twitch_92, Boiii_92, DrHayes_93, Spock_92, Durfee_92, Anaya_95, JAWS_91, Deby_92, Rosmarinus_92, BarrelRoll_92, Ramen_93, Clipper_99, Geraldini_93, CaseJules_95, Devera_98, Jayhawk_94, Rapunzel97_94, BaghaKamala_91, QuincyRose_90, BGlluviae_91, MacKat_89, AlishaPH_85, Illumine_96, Piatt_91, Padfoot_92, Llorens_92, TruffulaTree_94, Peel_92, CREW_91, TiniBug_91, Dalmuri_92, ActinUp_93, Dole_95, Tiri_93, Apocalypse_95, Jarvi_92, Asayake_92, Atiba_93, Joy99_93, Inky_92, Stinson_93, Hyperbowlee_91, Topper_92, Zabiza_88, YoureAdopted_91, Pokerus_92, Urkel_93, Zavala_94, Slimphazie_94, Jeckyll_92
- Track 5 : TingHuaYa_96, Yunkel11_97, LastHope_98, Guanica15_98, Efra2_99
- Track 6 : SgtBeansprout_74, Torres_75, LilPharaoh_74, Nutello_73, Nikao_76, Teejan_75, Enkosi_75, Mdavu_74, Biglebops_73, Amelie_73
- Track 7 : Scarlett_96, Oscar_97
- Track 8 : Dartin_94, Shaobing_93, McMater_94, Richo_94, Niklas_94, Chavito_94, Peanam_94
- Track 9 : TreyKay_94, TaiwanKao_93, CrimD_92, Prithvi_94, LindNT_90
- Track 10 : Ageofdapage_96, Murucutumbu_92, Megsy_96
- Track 11 : Angelica_89
- Track 12 : Nibb_96
- Track 13 : KiSi_97, LeMond_96
- Track 14 : Curiosium_102
- Track 15 : MarkPhew_96
- Track 16 : LaterM_92
- Track 17 : Sulley_89
- Track 18 : Chris_94
- Track 19 : Validus_99
- Track 20 : Bern_95
- Track 21 : Marcoliusprime_64, DismalFunk_64, Findley_64, DismalStressor_64, Strobilo_65
- Track 22 : Mufasa_64, BoostSeason_64

- Track 23 : Milly_64
- Track 24 : TM4_61
- Track 25 : ZoeJ_63
- Track 26 : Eponine_61, Fionnbharth_59
- Track 27 : Bobquesha_61, Patt_56, Reptar3000_57, MissDaisy_57
- Track 28 : SamScheppers_57, Lebo14_60, Juliette_61, Slarp_59, JF1_59, Wintermute_59, Cheetobro_59, OmniCritical_58, Ruthiejr_60, Malthus_60, Y2_58, Mitti_59, Y10_58, Kraw_60, Chancellor_59
- Track 29 : Taquito_58
- Track 30 : SirPhilip_93
- Track 31 : Appletree2_82, Rose5_84, Zaria_84, Poochiewood_81, AvadaKedavra_83, Wyatt2_84, Silverleaf_83, DirkDirk_80, JoeDirt_84, Enceladus_80, CicholasNage_80, Acquire49_83, Halena_81, MAckerman_82, Calm_85, Wamburgxpress_83, OhShagHennessy_80, Tyson_84
- Track 32 : LeBron_82, UPIE_82
- Track 33 : Gardann_86, Nicholasp3_86, SoJulia_88, Loadrie_84, BobsGarage_86, Finemlucis_86, Faith1_86, DrSeegs_86, BigCheese_86, Miley16_86, Winky_86, Rumpelstiltskin_83, Bazzle_84, Vetrix_85, Itos_86, Lewan_87, Kahlid_86, LilDestine_85, Crossroads_86, Soap141_86, Sarshaun_87, Wilder_87, Zakai_87, Netyap_87, MkaliMitinis3_87, Gabriela_86, Wigglewiggle_85, Underpass_77, Breezona_86
- Track 34 : DHan_90, Hafay_87
- Track 35 : Archie_83, Baoshan_84, Claus_86, ZhongYanYuan_84
- Track 36 : DanBing_86
- Track 37 : GuuelaD_84
- Track 38 : Tourach_85
- Track 39 : MsGreen_85, Snenia_84, Jubie_84, DuncansLeg_85, BourbonZero_86, MiniMac_88, TriFive_85, Finnry_84, Bellis_83, LiyuLake_84, Nicholas_82, Moostard_82, Jobypre_85, Red305_86, Samty_83, Lumos_85, Kingsolomon_82, Clautastrophe_83, MiniLon_88
- Track 40 : KirDoubleO7_83, Ellson_84, Lolly9_83
- Track 41 : Whirlwind_85, Krypton555_85
- Track 42 : BrainDrainer_84, Douge_85, Quby_84
- Track 43 : Bromden_85
- Track 44 : FarmResident_85
- Track 45 : Douzhi_84
- Track 46 : Chaser_83
- Track 47 : Sheng711_85
- Track 48 : Kropertea_80
- Track 49 : DyoEdafos_88
- Track 50 : PYPDinur_83

Summary of Final Annotations (See graph section above for start numbers):

The start number called the most often in the published annotations is 28, it was called in 106 of the 203 non-draft genes in the pham.

Genes that call this "Most Annotated" start:

- ActinUp_93, Adephegia_91, Adonis_92, Ageofdapage_96, AlishaPH_85, Amelie_73, Anaya_95, Angelica_89, Apocalypse_95, Asayake_92, Atiba_93,

BEEST_92, BGlluviae_91, BaghaKamala_91, BarrelRoll_92, Beezoo_95, Bella96_93, Belladonna_92, Bern_95, Binglebops_73, Blizzard_92, Boiiii_92, CREW_91, CallaLilly_93, Capricorn_92, CaseJules_95, Chavito_94, CheetoDust_92, Chris_94, Clipper_99, CrimD_92, Curiosium_102, Dalmuri_92, Dartin_94, Deby_92, Devera_98, Dole_95, DrHayes_93, Durfee_92, Efra2_99, Emerson_96, Enkosi_75, Ganymede_92, Geraldini_93, Guanica15_98, HedwigODU_92, Homura_91, Hyperbowlee_91, Illumine_96, Inky_92, JAWS_91, Jarvi_92, Jayhawk_94, Jeckyll_92, Joy99_93, KiSi_97, LastHope_98, LaterM_92, LeMond_96, LilPharaoh_74, LindNT_90, Llorens_92, Lunahalos_92, MacKat_89, MarkPhew_96, McMater_94, Mdavu_74, MeaningOfLife_94, Megsy_96, MortyNRick_36, Murucutumbu_92, Mynx_93, Nergal_73, Nibb_96, Nikao_76, Niklas_94, Nutello_73, Oscar_97, Padfoot_92, Padpat_97, Peanam_94, Peel_92, Piatt_91, Pokerus_92, Powerball_29, Prithvi_94, QuincyRose_90, Ramen_93, Rapunzel97_94, Richo_94, Rosmarinus_92, SamuelLPlaqson_93, Scarlett_96, SgtBeansprout_74, Shaobing_93, ShiaSurprise_94, SirPhilip_93, Slimphazie_94, Spock_92, Stinson_93, Sulley_89, Tachez_92, TaiwanKao_93, Teejan_75, TingHuaYa_96, TiniBug_91, Tiri_93, Topper_92, Torres_75, TreyKay_94, TruffulaTree_94, Twitch_92, Urkel_93, Validus_99, Veliki_93, YoureAdopted_91, Yunkel11_97, Zabiza_88, Zavala_94,

Genes that have the "Most Annotated" start but do not call it:

-

Genes that do not have the "Most Annotated" start:

- Acquire49_83, Appletree2_82, Archie_83, AvadaKedavra_83, Baoshan_84, Bazzle_84, Bellis_83, BigCheese_86, Bobquesha_61, BobsGarage_86, BoostSeason_64, BourbonZero_86, BrainDrainer_84, Breezona_86, Bromden_85, Calm_85, Chancellor_59, Chaser_83, Cheetobro_59, CicholasNage_80, Claus_86, Clautastrophe_83, Crossroads_86, DHan_90, DanBing_86, DirkDirk_80, DismalFunk_64, DismalStressor_64, Douge_85, Douzhi_84, DrSeegs_86, DuncansLeg_85, DyoEdafos_88, Ellson_84, Enceladus_80, Eponine_61, Faith1_86, FarmResident_85, Findley_64, Finemlucis_86, Finnry_84, Fionnbharth_59, Gabriela_86, Gardann_86, GuuelaD_84, Hafay_87, Halena_81, Itos_86, JF1_59, Jobypre_85, JoeDirt_84, Jubie_84, Juliette_61, Kahlid_86, Kingsolomon_82, KirDoubleO7_83, Kraw_60, Kropertea_80, Krypton555_85, LeBron_82, Lebo14_60, Lewan_87, LilDestine_85, LiyuLake_84, Loadrie_84, Lolly9_83, Lumos_85, MAckerman_82, Malthus_60, Marcoliusprime_64, Miley16_86, Milly_64, MiniLon_88, MiniMac_88, MissDaisy_57, Mitti_59, MkaliMitinis3_87, Moostard_82, MsGreen_85, Mufasa_64, Netyap_87, Nicholas_82, Nicholasp3_86, OhShagHennessy_80, OmniCritical_58, PYPDinur_83, Patt_56, Poochiewood_81, Quby_84, Red305_86, Reptar3000_57, Rose5_84, Rumpelstiltskin_83, Ruthiejr_60, SamScheppers_57, Samty_83, Sarshaun_87, Sheng711_85, Silverleaf_83, Slarp_59, Snenia_84, SoJulia_88, Soap141_86, Strobilo_65, TM4_61, Taquito_58, Tourach_85, TriFive_85, Tyson_84, UPIE_82, Underpass_77, Vetrix_85, Wamburggrxpress_83, Whirlwind_85, Wigglewiggles_85, Wilder_87, Winky_86, Wintermute_59, Wyatt2_84, Y10_58, Y2_58, Zakai_87, Zaria_84, ZhongYanYuan_84, ZoeJ_63,

Summary by start number:

Start 27:

- Found in 93 of 244 (38.1%) of genes in pham
- Manual Annotations of this start: 64 of 203
- Called 89.2% of time when present

- Phage (with cluster) where this start called: Acquire49_83 (L1), Appletree2_82 (L1), Archie_83 (L2), AvadaKedavra_83 (L1), Baoshan_84 (L2), Bazzle_84 (L2), Bellis_83 (L3), BigCheese_86 (L2), BobsGarage_86 (L2), BourbonZero_86 (L3), BrainDrainer_84 (L4), Breezona_86 (L2), Bromden_85 (L4), Calm_85 (L1), Chaser_83 (L4), CicholasNage_80 (L1), Claus_86 (L2), Clautastrophe_83 (L3), Crossroads_86 (L2), DanBing_86 (L2), DirkDirk_80 (L1), Douge_85 (L4), Douzhi_84 (L4), DrSeegs_86 (L2), DuncansLeg_85 (L3), Enceladus_80 (L1), Faith1_86 (L2), FarmResident_85 (L4), Finemlucis_86 (L2), Finnry_84 (L3), Gabriela_86 (L2), Gardann_86 (L2), GuuelaD_84 (L2), Halena_81 (L1), Itos_86 (L2), Jobypre_85 (L3), JoeDirt_84 (L1), Jubie_84 (L3), Kahlid_86 (L2), Kingsolomon_82 (L3), Kropertea_80 (L4), Krypton555_85 (L3), Lewan_87 (L2), LilDestine_85 (L2), LiyuLake_84 (L3), Loadrie_84 (L2), Lumos_85 (L3), MAckerman_82 (L1), Miley16_86 (L2), MiniLon_88 (L3), MiniMac_88 (L3), MkaliMitinis3_87 (L2), Moostard_82 (L3), MsGreen_85 (L3), Netyap_87 (L2), Nicholas_82 (L3), Nicholasp3_86 (L2), OhShagHennessy_80 (L1), Poochiewood_81 (L1), Quby_84 (L4), Red305_86 (L3), Rose5_84 (L1), Rumpelstiltskin_83 (L2), Samty_83 (L3), Sarshaun_87 (L2), Silverleaf_83 (L1), Snenia_84 (L3), SoJulia_88 (L2), Soap141_86 (L2), Tourach_85 (L2), TriFive_85 (L3), Tyson_84 (L1), Underpass_77 (L2), Vetrrix_85 (L2), Wamburggrxpress_83 (L1), Whirlwind_85 (L3), Wigglewiggles_85 (L2), Wilder_87 (L2), Winky_86 (L2), Wyatt2_84 (L1), Zakai_87 (L2), Zaria_84 (L1), ZhongYanYuan_84 (L2),

Start 28:

- Found in 119 of 244 (48.8%) of genes in pham
- Manual Annotations of this start: 106 of 203
- Called 100.0% of time when present
- Phage (with cluster) where this start called: ActinUp_93 (K1), Adephagia_91 (K1), Adonis_92 (K1), Ageofdapage_96 (K1), AlishaPH_85 (K1), Amelie_73 (K1), Anaya_95 (K1), Angelica_89 (K1), Apocalypse_95 (K1), Asayake_92 (K1), Atiba_93 (K1), BEEST_92 (K1), BGlluviae_91 (K1), BaghaKamala_91 (K1), BarrelRoll_92 (K1), Beezoo_95 (K1), Bella96_93 (K1), Belladonna_92 (K1), Bern_95 (K1), Biglebops_73 (K1), Blizzard_92 (K1), Boiii_92 (K1), CREW_91 (K1), CallaLilly_93 (K1), Capricorn_92 (K1), CaseJules_95 (K1), Chavito_94 (K1), CheetoDust_92 (K1), Chris_94 (K1), Clipper_99 (K1), CrimD_92 (K1), Curiosium_102 (K1), Dalmuri_92 (K1), Dartin_94 (K1), Deby_92 (K1), Devera_98 (K1), Dole_95 (K1), DrHayes_93 (K1), Durfee_92 (K1), Efra2_99 (K1), Emerson_96 (K1), Enkosi_75 (K1), Ganymede_92 (K1), Geraldini_93 (K1), Guanica15_98 (K1), HedwigODU_92 (K1), Homura_91 (K1), Hyperbowlee_91 (K1), Illumine_96 (K1), Inky_92 (K1), JAWS_91 (K1), Jarvi_92 (K1), Jayhawk_94 (K1), Jeckyll_92 (K1), Joy99_93 (K1), KiSi_97 (K1), LastHope_98 (K1), LaterM_92 (K1), LeMond_96 (K1), LilPharaoh_74 (K1), LindNT_90 (K1), Llorens_92 (K1), Lunahalos_92 (K1), MacKat_89 (K1), MarkPhew_96 (K1), McMater_94 (K1), Mdavu_74 (K1), MeaningOfLife_94 (K1), Megsy_96 (K1), MortyNRick_36 (DN), Murucutumbu_92 (K1), Mynx_93 (K1), Nergal_73 (AG), Nibb_96 (K1), Nikao_76 (K1), Niklas_94 (K1), Nutello_73 (K1), Oscar_97 (K1), Padfoot_92 (K1), Padpat_97 (K1), Peanam_94 (K1), Peel_92 (K1), Piatt_91 (K1), Pokerus_92 (K1), Powerball_29 (CZ4), Prithvi_94 (K1), QuincyRose_90 (K1), Ramen_93 (K1), Rapunzel97_94 (K1), Richo_94 (K1), Rosmarinus_92 (K1), SamuelLPlaqson_93 (K1), Scarlett_96 (K1), SgtBeansprout_74 (K1), Shaobing_93 (K1), ShiaSurprise_94 (K1), SirPhilip_93 (K6), Slimphazie_94 (K1), Spock_92 (K1), Stinson_93 (K1), Sulley_89 (K1), Tachez_92 (K1), TaiwanKao_93 (K1), Teejan_75 (K1), TingHuaYa_96 (K1), TiniBug_91 (K1), Tiri_93 (K1), Topper_92 (K1), Torres_75 (K1), TreyKay_94 (K1), TruffulaTree_94 (K1), Twitch_92 (K1), Urkel_93 (K1), Validus_99 (K1), Veliki_93 (K1), YoureAdopted_91 (K1), Yunkel11_97 (K1), Zabiza_88 (K1), Zavala_94 (K1),

Start 29:

- Found in 22 of 244 (9.0%) of genes in pham
- Manual Annotations of this start: 19 of 203
- Called 100.0% of time when present
- Phage (with cluster) where this start called: Bobquesha_61 (K4), Chancellor_59 (K4), Cheetobro_59 (K4), Eponine_61 (K4), Fionnbharth_59 (K4), JF1_59 (K4), Juliette_61 (K4), Kraw_60 (K4), Lebo14_60 (K4), Malthus_60 (K4), MissDaisy_57 (K4), Mitti_59 (K4), OmniCritical_58 (K4), Patt_56 (K4), Reptar3000_57 (K4), Ruthiejr_60 (K4), SamScheppers_57 (K4), Slarp_59 (K4), Taquito_58 (K4), Wintermute_59 (K4), Y10_58 (K4), Y2_58 (K4),

Start 30:

- Found in 10 of 244 (4.1%) of genes in pham
- Manual Annotations of this start: 10 of 203
- Called 100.0% of time when present
- Phage (with cluster) where this start called: BoostSeason_64 (K2), DismalFunk_64 (K2), DismalStressor_64 (K2), Findley_64 (K2), Marcoliusprime_64 (K2), Milly_64 (K2), Mufasa_64 (K2), Strobilo_65 (K2), TM4_61 (K2), ZoeJ_63 (K2),

Start 31:

- Found in 11 of 244 (4.5%) of genes in pham
- Manual Annotations of this start: 1 of 203
- Called 27.3% of time when present
- Phage (with cluster) where this start called: DyoEdafos_88 (L4), PYPDinur_83 (L4), Sheng711_85 (L4),

Start 32:

- Found in 84 of 244 (34.4%) of genes in pham
- Manual Annotations of this start: 2 of 203
- Called 4.8% of time when present
- Phage (with cluster) where this start called: DHan_90 (L2), Hafay_87 (L2), LeBron_82 (L1), UPIE_82 (L1),

Start 35:

- Found in 49 of 244 (20.1%) of genes in pham
- Manual Annotations of this start: 1 of 203
- Called 6.1% of time when present
- Phage (with cluster) where this start called: Ellson_84 (L3), KirDoubleO7_83 (L3), Lolly9_83 (L3),

Summary by clusters:

There are 11 clusters represented in this pham: DN, AG, L1, K1, CZ4, K2, L4, L2, L3, K4, K6,

Info for manual annotations of cluster AG:

- Start number 28 was manually annotated 1 time for cluster AG.

Info for manual annotations of cluster CZ4:

- Start number 28 was manually annotated 1 time for cluster CZ4.

Info for manual annotations of cluster K1:

- Start number 28 was manually annotated 103 times for cluster K1.

Info for manual annotations of cluster K2:

- Start number 30 was manually annotated 10 times for cluster K2.

Info for manual annotations of cluster K4:

- Start number 29 was manually annotated 19 times for cluster K4.

Info for manual annotations of cluster K6:

- Start number 28 was manually annotated 1 time for cluster K6.

Info for manual annotations of cluster L1:

- Start number 27 was manually annotated 17 times for cluster L1.
- Start number 32 was manually annotated 2 times for cluster L1.

Info for manual annotations of cluster L2:

- Start number 27 was manually annotated 28 times for cluster L2.

Info for manual annotations of cluster L3:

- Start number 27 was manually annotated 16 times for cluster L3.
- Start number 35 was manually annotated 1 time for cluster L3.

Info for manual annotations of cluster L4:

- Start number 27 was manually annotated 3 times for cluster L4.
- Start number 31 was manually annotated 1 time for cluster L4.

Gene Information:

Gene: Acquire49_83 Start: 53976, Stop: 54194, Start Num: 27

Candidate Starts for Acquire49_83:

(Start: 27 @53976 has 64 MA's), (Start: 32 @54000 has 2 MA's), (40, 54087), (42, 54099), (43, 54102), (50, 54156),

Gene: ActinUp_93 Start: 57970, Stop: 58185, Start Num: 28

Candidate Starts for ActinUp_93:

(Start: 28 @57970 has 106 MA's), (42, 58087), (45, 58114),

Gene: Adephagia_91 Start: 57814, Stop: 58029, Start Num: 28

Candidate Starts for Adephagia_91:

(Start: 28 @57814 has 106 MA's), (42, 57931), (45, 57958),

Gene: Adonis_92 Start: 58199, Stop: 58414, Start Num: 28

Candidate Starts for Adonis_92:

(Start: 28 @58199 has 106 MA's), (42, 58316), (45, 58343),

Gene: Ageofdapage_96 Start: 58816, Stop: 59031, Start Num: 28

Candidate Starts for Ageofdapage_96:

(Start: 28 @58816 has 106 MA's), (42, 58933), (44, 58957), (47, 58975),

Gene: AlishaPH_85 Start: 55202, Stop: 55417, Start Num: 28

Candidate Starts for AlishaPH_85:

(Start: 28 @55202 has 106 MA's), (42, 55319), (45, 55346),

Gene: Amelie_73 Start: 53785, Stop: 54000, Start Num: 28

Candidate Starts for Amelie_73:

(Start: 28 @53785 has 106 MA's), (38, 53857), (48, 53947),

Gene: Anaya_95 Start: 59049, Stop: 59264, Start Num: 28

Candidate Starts for Anaya_95:

(Start: 28 @59049 has 106 MA's), (42, 59166), (45, 59193),

Gene: Angelica_89 Start: 57421, Stop: 57636, Start Num: 28

Candidate Starts for Angelica_89:

(21, 57358), (25, 57373), (Start: 28 @57421 has 106 MA's), (42, 57538), (45, 57565),

Gene: Apocalypse_95 Start: 58179, Stop: 58394, Start Num: 28

Candidate Starts for Apocalypse_95:

(Start: 28 @58179 has 106 MA's), (42, 58296), (45, 58323),

Gene: Appletree2_82 Start: 53587, Stop: 53805, Start Num: 27

Candidate Starts for Appletree2_82:

(Start: 27 @53587 has 64 MA's), (Start: 32 @53611 has 2 MA's), (40, 53698), (42, 53710), (43, 53713), (50, 53767),

Gene: Archie_83 Start: 55510, Stop: 55728, Start Num: 27

Candidate Starts for Archie_83:

(Start: 27 @55510 has 64 MA's), (Start: 32 @55534 has 2 MA's), (34, 55564), (42, 55633), (50, 55690),

Gene: Asayake_92 Start: 58132, Stop: 58347, Start Num: 28

Candidate Starts for Asayake_92:

(Start: 28 @58132 has 106 MA's), (42, 58249), (45, 58276),

Gene: Atiba_93 Start: 57783, Stop: 57998, Start Num: 28

Candidate Starts for Atiba_93:

(Start: 28 @57783 has 106 MA's), (42, 57900), (45, 57927),

Gene: AvadaKedavra_83 Start: 54055, Stop: 54273, Start Num: 27

Candidate Starts for AvadaKedavra_83:

(Start: 27 @54055 has 64 MA's), (Start: 32 @54079 has 2 MA's), (40, 54166), (42, 54178), (43, 54181), (50, 54235),

Gene: BEEST_92 Start: 58133, Stop: 58348, Start Num: 28

Candidate Starts for BEEST_92:

(Start: 28 @58133 has 106 MA's), (42, 58250), (45, 58277),

Gene: BGlluviae_91 Start: 57523, Stop: 57738, Start Num: 28

Candidate Starts for BGlluviae_91:

(Start: 28 @57523 has 106 MA's), (42, 57640), (45, 57667),

Gene: BaghaKamala_91 Start: 57359, Stop: 57574, Start Num: 28

Candidate Starts for BaghaKamala_91:

(Start: 28 @57359 has 106 MA's), (42, 57476), (45, 57503),

Gene: Baoshan_84 Start: 56170, Stop: 56388, Start Num: 27
Candidate Starts for Baoshan_84:
(Start: 27 @56170 has 64 MA's), (Start: 32 @56194 has 2 MA's), (34, 56224), (42, 56293), (50, 56350),

Gene: BarrelRoll_92 Start: 57899, Stop: 58114, Start Num: 28
Candidate Starts for BarrelRoll_92:
(Start: 28 @57899 has 106 MA's), (42, 58016), (45, 58043),

Gene: Bazzle_84 Start: 56066, Stop: 56284, Start Num: 27
Candidate Starts for Bazzle_84:
(Start: 27 @56066 has 64 MA's), (Start: 32 @56090 has 2 MA's), (34, 56120), (40, 56177), (42, 56189),
(50, 56246),

Gene: Beezoo_95 Start: 58720, Stop: 58935, Start Num: 28
Candidate Starts for Beezoo_95:
(Start: 28 @58720 has 106 MA's), (42, 58837), (45, 58864),

Gene: Bella96_93 Start: 58574, Stop: 58789, Start Num: 28
Candidate Starts for Bella96_93:
(Start: 28 @58574 has 106 MA's), (42, 58691), (45, 58718),

Gene: Belladonna_92 Start: 57935, Stop: 58150, Start Num: 28
Candidate Starts for Belladonna_92:
(Start: 28 @57935 has 106 MA's), (42, 58052), (45, 58079),

Gene: Bellis_83 Start: 55816, Stop: 56034, Start Num: 27
Candidate Starts for Bellis_83:
(Start: 27 @55816 has 64 MA's), (Start: 35 @55879 has 1 MA's), (42, 55939), (50, 55996),

Gene: Bern_95 Start: 56572, Stop: 56787, Start Num: 28
Candidate Starts for Bern_95:
(Start: 28 @56572 has 106 MA's), (42, 56689),

Gene: BigCheese_86 Start: 55920, Stop: 56138, Start Num: 27
Candidate Starts for BigCheese_86:
(Start: 27 @55920 has 64 MA's), (Start: 32 @55944 has 2 MA's), (34, 55974), (40, 56031), (42, 56043),
(50, 56100),

Gene: Biglebops_73 Start: 53800, Stop: 54015, Start Num: 28
Candidate Starts for Biglebops_73:
(Start: 28 @53800 has 106 MA's), (38, 53872), (48, 53962),

Gene: Blizzard_92 Start: 58132, Stop: 58347, Start Num: 28
Candidate Starts for Blizzard_92:
(Start: 28 @58132 has 106 MA's), (42, 58249), (45, 58276),

Gene: Bobquesha_61 Start: 38996, Stop: 39214, Start Num: 29
Candidate Starts for Bobquesha_61:
(6, 38747), (7, 38756), (Start: 29 @38996 has 19 MA's), (Start: 32 @39011 has 2 MA's), (43, 39113),
(47, 39158),

Gene: BobsGarage_86 Start: 55920, Stop: 56138, Start Num: 27
Candidate Starts for BobsGarage_86:

(Start: 27 @55920 has 64 MA's), (Start: 32 @55944 has 2 MA's), (34, 55974), (40, 56031), (42, 56043), (50, 56100),

Gene: Boiiii_92 Start: 58134, Stop: 58349, Start Num: 28

Candidate Starts for Boiiii_92:

(Start: 28 @58134 has 106 MA's), (42, 58251), (45, 58278),

Gene: BoostSeason_64 Start: 43984, Stop: 44202, Start Num: 30

Candidate Starts for BoostSeason_64:

(2, 43537), (3, 43558), (4, 43561), (Start: 30 @43984 has 10 MA's), (Start: 35 @44038 has 1 MA's), (42, 44098), (43, 44101),

Gene: BourbonZero_86 Start: 55845, Stop: 56063, Start Num: 27

Candidate Starts for BourbonZero_86:

(Start: 27 @55845 has 64 MA's), (Start: 35 @55908 has 1 MA's), (42, 55968), (50, 56025),

Gene: BrainDrainer_84 Start: 54679, Stop: 54897, Start Num: 27

Candidate Starts for BrainDrainer_84:

(11, 54523), (12, 54529), (14, 54568), (16, 54580), (17, 54595), (18, 54604), (Start: 27 @54679 has 64 MA's), (Start: 31 @54700 has 1 MA's), (Start: 35 @54742 has 1 MA's), (42, 54802), (43, 54805), (46, 54829), (50, 54859), (51, 54871),

Gene: Breezona_86 Start: 55920, Stop: 56138, Start Num: 27

Candidate Starts for Breezona_86:

(Start: 27 @55920 has 64 MA's), (Start: 32 @55944 has 2 MA's), (34, 55974), (40, 56031), (42, 56043), (50, 56100),

Gene: Bromden_85 Start: 55676, Stop: 55894, Start Num: 27

Candidate Starts for Bromden_85:

(11, 55517), (12, 55523), (14, 55562), (15, 55568), (17, 55586), (23, 55616), (Start: 27 @55676 has 64 MA's), (Start: 31 @55697 has 1 MA's), (33, 55703), (Start: 35 @55739 has 1 MA's), (42, 55799), (43, 55802), (46, 55826), (51, 55868),

Gene: CREW_91 Start: 57935, Stop: 58150, Start Num: 28

Candidate Starts for CREW_91:

(Start: 28 @57935 has 106 MA's), (42, 58052), (45, 58079),

Gene: CallaLilly_93 Start: 57858, Stop: 58073, Start Num: 28

Candidate Starts for CallaLilly_93:

(Start: 28 @57858 has 106 MA's), (42, 57975), (45, 58002),

Gene: Calm_85 Start: 54298, Stop: 54516, Start Num: 27

Candidate Starts for Calm_85:

(Start: 27 @54298 has 64 MA's), (Start: 32 @54322 has 2 MA's), (40, 54409), (42, 54421), (43, 54424), (50, 54478),

Gene: Capricorn_92 Start: 57935, Stop: 58150, Start Num: 28

Candidate Starts for Capricorn_92:

(Start: 28 @57935 has 106 MA's), (42, 58052), (45, 58079),

Gene: CaseJules_95 Start: 58132, Stop: 58347, Start Num: 28

Candidate Starts for CaseJules_95:

(Start: 28 @58132 has 106 MA's), (42, 58249), (45, 58276),

Gene: Chancellor_59 Start: 39492, Stop: 39713, Start Num: 29

Candidate Starts for Chancellor_59:

(6, 39237), (7, 39246), (Start: 29 @39492 has 19 MA's), (Start: 32 @39507 has 2 MA's), (43, 39609), (47, 39654),

Gene: Chaser_83 Start: 54300, Stop: 54518, Start Num: 27

Candidate Starts for Chaser_83:

(Start: 27 @54300 has 64 MA's), (Start: 31 @54321 has 1 MA's), (Start: 32 @54324 has 2 MA's), (Start: 35 @54363 has 1 MA's), (40, 54411), (42, 54423), (46, 54450), (50, 54480), (51, 54492),

Gene: Chavito_94 Start: 59774, Stop: 59989, Start Num: 28

Candidate Starts for Chavito_94:

(Start: 28 @59774 has 106 MA's), (45, 59918),

Gene: CheetoDust_92 Start: 57529, Stop: 57744, Start Num: 28

Candidate Starts for CheetoDust_92:

(Start: 28 @57529 has 106 MA's), (42, 57646), (45, 57673),

Gene: Cheetobro_59 Start: 39489, Stop: 39710, Start Num: 29

Candidate Starts for Cheetobro_59:

(6, 39234), (7, 39243), (Start: 29 @39489 has 19 MA's), (Start: 32 @39504 has 2 MA's), (43, 39606), (47, 39651),

Gene: Chris_94 Start: 58483, Stop: 58698, Start Num: 28

Candidate Starts for Chris_94:

(Start: 28 @58483 has 106 MA's), (39, 58579), (42, 58600), (45, 58627),

Gene: CicholasNage_80 Start: 53640, Stop: 53858, Start Num: 27

Candidate Starts for CicholasNage_80:

(Start: 27 @53640 has 64 MA's), (Start: 32 @53664 has 2 MA's), (40, 53751), (42, 53763), (43, 53766), (50, 53820),

Gene: Claus_86 Start: 55854, Stop: 56072, Start Num: 27

Candidate Starts for Claus_86:

(Start: 27 @55854 has 64 MA's), (Start: 32 @55878 has 2 MA's), (34, 55908), (42, 55977), (50, 56034),

Gene: Clautastrophe_83 Start: 55814, Stop: 56032, Start Num: 27

Candidate Starts for Clautastrophe_83:

(Start: 27 @55814 has 64 MA's), (Start: 35 @55877 has 1 MA's), (42, 55937), (50, 55994),

Gene: Clipper_99 Start: 58614, Stop: 58829, Start Num: 28

Candidate Starts for Clipper_99:

(Start: 28 @58614 has 106 MA's), (42, 58731), (45, 58758),

Gene: CrimD_92 Start: 57978, Stop: 58193, Start Num: 28

Candidate Starts for CrimD_92:

(Start: 28 @57978 has 106 MA's), (42, 58095), (43, 58098), (44, 58119), (47, 58137),

Gene: Crossroads_86 Start: 55995, Stop: 56213, Start Num: 27

Candidate Starts for Crossroads_86:

(Start: 27 @55995 has 64 MA's), (Start: 32 @56019 has 2 MA's), (34, 56049), (40, 56106), (42, 56118), (50, 56175),

Gene: Curiosium_102 Start: 60027, Stop: 60242, Start Num: 28
Candidate Starts for Curiosium_102:
(Start: 28 @60027 has 106 MA's), (36, 60090), (41, 60141), (42, 60144),

Gene: DHan_90 Start: 56257, Stop: 56451, Start Num: 32
Candidate Starts for DHan_90:
(Start: 27 @56233 has 64 MA's), (Start: 32 @56257 has 2 MA's), (34, 56287), (42, 56356), (50, 56413),

Gene: Dalmuri_92 Start: 57935, Stop: 58150, Start Num: 28
Candidate Starts for Dalmuri_92:
(Start: 28 @57935 has 106 MA's), (42, 58052), (45, 58079),

Gene: DanBing_86 Start: 55731, Stop: 55949, Start Num: 27
Candidate Starts for DanBing_86:
(Start: 27 @55731 has 64 MA's), (Start: 32 @55755 has 2 MA's), (34, 55785), (42, 55854), (50, 55911),

Gene: Dartin_94 Start: 59417, Stop: 59632, Start Num: 28
Candidate Starts for Dartin_94:
(Start: 28 @59417 has 106 MA's), (45, 59561),

Gene: Deby_92 Start: 58690, Stop: 58905, Start Num: 28
Candidate Starts for Deby_92:
(Start: 28 @58690 has 106 MA's), (42, 58807), (45, 58834),

Gene: Devera_98 Start: 58812, Stop: 59027, Start Num: 28
Candidate Starts for Devera_98:
(Start: 28 @58812 has 106 MA's), (42, 58929), (45, 58956),

Gene: DirkDirk_80 Start: 53167, Stop: 53385, Start Num: 27
Candidate Starts for DirkDirk_80:
(Start: 27 @53167 has 64 MA's), (Start: 32 @53191 has 2 MA's), (40, 53278), (42, 53290), (43, 53293),
(50, 53347),

Gene: DismalFunk_64 Start: 44409, Stop: 44627, Start Num: 30
Candidate Starts for DismalFunk_64:
(2, 43959), (3, 43980), (4, 43983), (Start: 30 @44409 has 10 MA's), (Start: 35 @44463 has 1 MA's),
(42, 44523), (43, 44526), (48, 44574),

Gene: DismalStressor_64 Start: 44409, Stop: 44627, Start Num: 30
Candidate Starts for DismalStressor_64:
(2, 43959), (3, 43980), (4, 43983), (Start: 30 @44409 has 10 MA's), (Start: 35 @44463 has 1 MA's),
(42, 44523), (43, 44526), (48, 44574),

Gene: Dole_95 Start: 58815, Stop: 59030, Start Num: 28
Candidate Starts for Dole_95:
(Start: 28 @58815 has 106 MA's), (42, 58932), (45, 58959),

Gene: Douge_85 Start: 54625, Stop: 54843, Start Num: 27
Candidate Starts for Douge_85:
(11, 54469), (12, 54475), (14, 54514), (16, 54526), (17, 54541), (18, 54550), (Start: 27 @54625 has 64
MA's), (Start: 31 @54646 has 1 MA's), (Start: 35 @54688 has 1 MA's), (42, 54748), (43, 54751), (46,
54775), (50, 54805), (51, 54817),

Gene: Douzhi_84 Start: 54496, Stop: 54714, Start Num: 27

Candidate Starts for Douzhi_84:

(11, 54340), (12, 54346), (14, 54385), (16, 54397), (17, 54412), (18, 54421), (24, 54445), (Start: 27 @54496 has 64 MA's), (Start: 31 @54517 has 1 MA's), (Start: 35 @54559 has 1 MA's), (42, 54619), (43, 54622), (46, 54646), (50, 54676),

Gene: DrHayes_93 Start: 58379, Stop: 58594, Start Num: 28

Candidate Starts for DrHayes_93:

(Start: 28 @58379 has 106 MA's), (42, 58496), (45, 58523),

Gene: DrSeegs_86 Start: 55920, Stop: 56138, Start Num: 27

Candidate Starts for DrSeegs_86:

(Start: 27 @55920 has 64 MA's), (Start: 32 @55944 has 2 MA's), (34, 55974), (40, 56031), (42, 56043), (50, 56100),

Gene: DuncansLeg_85 Start: 55833, Stop: 56051, Start Num: 27

Candidate Starts for DuncansLeg_85:

(Start: 27 @55833 has 64 MA's), (Start: 35 @55896 has 1 MA's), (42, 55956), (50, 56013),

Gene: Durfee_92 Start: 58132, Stop: 58347, Start Num: 28

Candidate Starts for Durfee_92:

(Start: 28 @58132 has 106 MA's), (42, 58249), (45, 58276),

Gene: DyoEdafos_88 Start: 55189, Stop: 55389, Start Num: 31

Candidate Starts for DyoEdafos_88:

(Start: 27 @55168 has 64 MA's), (Start: 31 @55189 has 1 MA's), (Start: 32 @55192 has 2 MA's), (Start: 35 @55231 has 1 MA's), (42, 55291), (43, 55294), (46, 55318), (50, 55348),

Gene: Efra2_99 Start: 59201, Stop: 59416, Start Num: 28

Candidate Starts for Efra2_99:

(Start: 28 @59201 has 106 MA's), (43, 59321), (45, 59345),

Gene: Ellson_84 Start: 56211, Stop: 56366, Start Num: 35

Candidate Starts for Ellson_84:

(Start: 27 @56148 has 64 MA's), (Start: 35 @56211 has 1 MA's), (42, 56271), (50, 56328),

Gene: Emerson_96 Start: 58537, Stop: 58752, Start Num: 28

Candidate Starts for Emerson_96:

(Start: 28 @58537 has 106 MA's), (42, 58654), (45, 58681),

Gene: Enceladus_80 Start: 53944, Stop: 54162, Start Num: 27

Candidate Starts for Enceladus_80:

(Start: 27 @53944 has 64 MA's), (Start: 32 @53968 has 2 MA's), (40, 54055), (42, 54067), (43, 54070), (50, 54124),

Gene: Enkosi_75 Start: 56398, Stop: 56613, Start Num: 28

Candidate Starts for Enkosi_75:

(Start: 28 @56398 has 106 MA's), (38, 56470), (48, 56560),

Gene: Eponine_61 Start: 40335, Stop: 40556, Start Num: 29

Candidate Starts for Eponine_61:

(6, 40080), (Start: 29 @40335 has 19 MA's), (Start: 32 @40350 has 2 MA's), (43, 40452), (47, 40497),

Gene: Faith1_86 Start: 55920, Stop: 56138, Start Num: 27

Candidate Starts for Faith1_86:

(Start: 27 @55920 has 64 MA's), (Start: 32 @55944 has 2 MA's), (34, 55974), (40, 56031), (42, 56043), (50, 56100),

Gene: FarmResident_85 Start: 54235, Stop: 54453, Start Num: 27

Candidate Starts for FarmResident_85:

(11, 54079), (12, 54085), (14, 54124), (16, 54136), (17, 54151), (18, 54160), (Start: 27 @54235 has 64 MA's), (Start: 31 @54256 has 1 MA's), (Start: 35 @54298 has 1 MA's), (42, 54358), (43, 54361), (50, 54415),

Gene: Findley_64 Start: 44402, Stop: 44620, Start Num: 30

Candidate Starts for Findley_64:

(2, 43952), (3, 43973), (4, 43976), (Start: 30 @44402 has 10 MA's), (Start: 35 @44456 has 1 MA's), (42, 44516), (43, 44519), (48, 44567),

Gene: Finemlucis_86 Start: 56607, Stop: 56825, Start Num: 27

Candidate Starts for Finemlucis_86:

(Start: 27 @56607 has 64 MA's), (Start: 32 @56631 has 2 MA's), (34, 56661), (40, 56718), (42, 56730), (50, 56787),

Gene: Finnry_84 Start: 55835, Stop: 56053, Start Num: 27

Candidate Starts for Finnry_84:

(Start: 27 @55835 has 64 MA's), (Start: 35 @55898 has 1 MA's), (42, 55958), (50, 56015),

Gene: Fionnbharth_59 Start: 39733, Stop: 39954, Start Num: 29

Candidate Starts for Fionnbharth_59:

(6, 39478), (Start: 29 @39733 has 19 MA's), (Start: 32 @39748 has 2 MA's), (43, 39850), (47, 39895),

Gene: Gabriela_86 Start: 55266, Stop: 55484, Start Num: 27

Candidate Starts for Gabriela_86:

(Start: 27 @55266 has 64 MA's), (Start: 32 @55290 has 2 MA's), (34, 55320), (40, 55377), (42, 55389), (50, 55446),

Gene: Ganymede_92 Start: 57946, Stop: 58161, Start Num: 28

Candidate Starts for Ganymede_92:

(Start: 28 @57946 has 106 MA's), (42, 58063), (45, 58090),

Gene: Gardann_86 Start: 55755, Stop: 55973, Start Num: 27

Candidate Starts for Gardann_86:

(Start: 27 @55755 has 64 MA's), (Start: 32 @55779 has 2 MA's), (34, 55809), (40, 55866), (42, 55878), (50, 55935),

Gene: Geraldini_93 Start: 58045, Stop: 58260, Start Num: 28

Candidate Starts for Geraldini_93:

(Start: 28 @58045 has 106 MA's), (42, 58162), (45, 58189),

Gene: Guanica15_98 Start: 58890, Stop: 59105, Start Num: 28

Candidate Starts for Guanica15_98:

(Start: 28 @58890 has 106 MA's), (43, 59010), (45, 59034),

Gene: GuuelaD_84 Start: 55897, Stop: 56115, Start Num: 27

Candidate Starts for GuuelaD_84:

(Start: 27 @55897 has 64 MA's), (Start: 32 @55921 has 2 MA's), (34, 55951), (40, 56008), (41, 56017), (42, 56020), (50, 56077),

Gene: Hafay_87 Start: 55873, Stop: 56067, Start Num: 32

Candidate Starts for Hafay_87:

(Start: 27 @55849 has 64 MA's), (Start: 32 @55873 has 2 MA's), (34, 55903), (42, 55972), (50, 56029),

Gene: Halena_81 Start: 53214, Stop: 53432, Start Num: 27

Candidate Starts for Halena_81:

(Start: 27 @53214 has 64 MA's), (Start: 32 @53238 has 2 MA's), (40, 53325), (42, 53337), (43, 53340), (50, 53394),

Gene: HedwigODU_92 Start: 57970, Stop: 58185, Start Num: 28

Candidate Starts for HedwigODU_92:

(Start: 28 @57970 has 106 MA's), (42, 58087), (45, 58114),

Gene: Homura_91 Start: 57935, Stop: 58150, Start Num: 28

Candidate Starts for Homura_91:

(Start: 28 @57935 has 106 MA's), (42, 58052), (45, 58079),

Gene: Hyperbowlee_91 Start: 58132, Stop: 58347, Start Num: 28

Candidate Starts for Hyperbowlee_91:

(Start: 28 @58132 has 106 MA's), (42, 58249), (45, 58276),

Gene: Illumine_96 Start: 58814, Stop: 59029, Start Num: 28

Candidate Starts for Illumine_96:

(Start: 28 @58814 has 106 MA's), (42, 58931), (45, 58958),

Gene: Inky_92 Start: 57935, Stop: 58150, Start Num: 28

Candidate Starts for Inky_92:

(Start: 28 @57935 has 106 MA's), (42, 58052), (45, 58079),

Gene: Itos_86 Start: 54826, Stop: 55044, Start Num: 27

Candidate Starts for Itos_86:

(Start: 27 @54826 has 64 MA's), (Start: 32 @54850 has 2 MA's), (34, 54880), (40, 54937), (42, 54949), (50, 55006),

Gene: JAWS_91 Start: 57917, Stop: 58132, Start Num: 28

Candidate Starts for JAWS_91:

(Start: 28 @57917 has 106 MA's), (42, 58034), (45, 58061),

Gene: JF1_59 Start: 39650, Stop: 39871, Start Num: 29

Candidate Starts for JF1_59:

(6, 39395), (7, 39404), (Start: 29 @39650 has 19 MA's), (Start: 32 @39665 has 2 MA's), (43, 39767), (47, 39812),

Gene: Jarvi_92 Start: 57935, Stop: 58150, Start Num: 28

Candidate Starts for Jarvi_92:

(Start: 28 @57935 has 106 MA's), (42, 58052), (45, 58079),

Gene: Jayhawk_94 Start: 57959, Stop: 58174, Start Num: 28

Candidate Starts for Jayhawk_94:

(Start: 28 @57959 has 106 MA's), (42, 58076), (45, 58103),

Gene: Jeckyll_92 Start: 57935, Stop: 58150, Start Num: 28

Candidate Starts for Jeckyll_92:

(Start: 28 @57935 has 106 MA's), (42, 58052), (45, 58079),

Gene: Jobypre_85 Start: 55814, Stop: 56032, Start Num: 27

Candidate Starts for Jobypre_85:

(Start: 27 @55814 has 64 MA's), (Start: 35 @55877 has 1 MA's), (42, 55937), (50, 55994),

Gene: JoeDirt_84 Start: 54542, Stop: 54760, Start Num: 27

Candidate Starts for JoeDirt_84:

(Start: 27 @54542 has 64 MA's), (Start: 32 @54566 has 2 MA's), (40, 54653), (42, 54665), (43, 54668), (50, 54722),

Gene: Joy99_93 Start: 58064, Stop: 58279, Start Num: 28

Candidate Starts for Joy99_93:

(Start: 28 @58064 has 106 MA's), (42, 58181), (45, 58208),

Gene: Jubie_84 Start: 55949, Stop: 56167, Start Num: 27

Candidate Starts for Jubie_84:

(Start: 27 @55949 has 64 MA's), (Start: 35 @56012 has 1 MA's), (42, 56072), (50, 56129),

Gene: Juliette_61 Start: 39797, Stop: 40018, Start Num: 29

Candidate Starts for Juliette_61:

(6, 39542), (7, 39551), (Start: 29 @39797 has 19 MA's), (Start: 32 @39812 has 2 MA's), (43, 39914), (47, 39959),

Gene: Kahlid_86 Start: 55706, Stop: 55924, Start Num: 27

Candidate Starts for Kahlid_86:

(Start: 27 @55706 has 64 MA's), (Start: 32 @55730 has 2 MA's), (34, 55760), (40, 55817), (42, 55829), (50, 55886),

Gene: KiSi_97 Start: 58913, Stop: 59128, Start Num: 28

Candidate Starts for KiSi_97:

(19, 58841), (20, 58844), (26, 58874), (Start: 28 @58913 has 106 MA's), (Start: 35 @58970 has 1 MA's), (42, 59030), (43, 59033),

Gene: Kingsolomon_82 Start: 55591, Stop: 55809, Start Num: 27

Candidate Starts for Kingsolomon_82:

(Start: 27 @55591 has 64 MA's), (Start: 35 @55654 has 1 MA's), (42, 55714), (50, 55771),

Gene: KirDoubleO7_83 Start: 55898, Stop: 56053, Start Num: 35

Candidate Starts for KirDoubleO7_83:

(Start: 27 @55835 has 64 MA's), (Start: 35 @55898 has 1 MA's), (42, 55958), (50, 56015),

Gene: Kraw_60 Start: 39485, Stop: 39706, Start Num: 29

Candidate Starts for Kraw_60:

(6, 39230), (7, 39239), (Start: 29 @39485 has 19 MA's), (Start: 32 @39500 has 2 MA's), (43, 39602), (47, 39647),

Gene: Kropertea_80 Start: 54445, Stop: 54666, Start Num: 27

Candidate Starts for Kropertea_80:

(Start: 27 @54445 has 64 MA's), (Start: 31 @54466 has 1 MA's), (Start: 32 @54469 has 2 MA's),
(Start: 35 @54508 has 1 MA's), (42, 54568), (43, 54571), (46, 54595), (50, 54625),

Gene: Krypton555_85 Start: 55859, Stop: 56077, Start Num: 27

Candidate Starts for Krypton555_85:

(Start: 27 @55859 has 64 MA's), (Start: 35 @55922 has 1 MA's), (42, 55982), (50, 56039),

Gene: LastHope_98 Start: 58834, Stop: 59049, Start Num: 28

Candidate Starts for LastHope_98:

(Start: 28 @58834 has 106 MA's), (43, 58954), (45, 58978),

Gene: LaterM_92 Start: 58345, Stop: 58560, Start Num: 28

Candidate Starts for LaterM_92:

(Start: 28 @58345 has 106 MA's), (41, 58459), (42, 58462), (44, 58486), (47, 58504),

Gene: LeBron_82 Start: 53237, Stop: 53431, Start Num: 32

Candidate Starts for LeBron_82:

(Start: 27 @53213 has 64 MA's), (Start: 32 @53237 has 2 MA's), (40, 53324), (42, 53336), (43, 53339),
(50, 53393),

Gene: LeMond_96 Start: 58870, Stop: 59085, Start Num: 28

Candidate Starts for LeMond_96:

(19, 58798), (20, 58801), (26, 58831), (Start: 28 @58870 has 106 MA's), (Start: 35 @58927 has 1
MA's), (42, 58987), (43, 58990),

Gene: Lebo14_60 Start: 39752, Stop: 39973, Start Num: 29

Candidate Starts for Lebo14_60:

(6, 39497), (7, 39506), (Start: 29 @39752 has 19 MA's), (Start: 32 @39767 has 2 MA's), (43, 39869),
(47, 39914),

Gene: Lewan_87 Start: 55761, Stop: 55979, Start Num: 27

Candidate Starts for Lewan_87:

(Start: 27 @55761 has 64 MA's), (Start: 32 @55785 has 2 MA's), (34, 55815), (40, 55872), (42, 55884),
(50, 55941),

Gene: LilDestine_85 Start: 55610, Stop: 55828, Start Num: 27

Candidate Starts for LilDestine_85:

(Start: 27 @55610 has 64 MA's), (Start: 32 @55634 has 2 MA's), (34, 55664), (40, 55721), (42, 55733),
(50, 55790),

Gene: LilPharaoh_74 Start: 53513, Stop: 53728, Start Num: 28

Candidate Starts for LilPharaoh_74:

(Start: 28 @53513 has 106 MA's), (38, 53585), (48, 53675),

Gene: LindNT_90 Start: 58232, Stop: 58447, Start Num: 28

Candidate Starts for LindNT_90:

(Start: 28 @58232 has 106 MA's), (42, 58349), (43, 58352), (44, 58373), (47, 58391),

Gene: LiyuLake_84 Start: 55908, Stop: 56126, Start Num: 27

Candidate Starts for LiyuLake_84:

(Start: 27 @55908 has 64 MA's), (Start: 35 @55971 has 1 MA's), (42, 56031), (50, 56088),

Gene: Llorens_92 Start: 57935, Stop: 58150, Start Num: 28

Candidate Starts for Llorens_92:
(Start: 28 @57935 has 106 MA's), (42, 58052), (45, 58079),

Gene: Loadrie_84 Start: 55785, Stop: 56000, Start Num: 27
Candidate Starts for Loadrie_84:
(Start: 27 @55785 has 64 MA's), (Start: 32 @55809 has 2 MA's), (34, 55839), (40, 55896), (42, 55908),
(50, 55965),

Gene: Lolly9_83 Start: 55730, Stop: 55885, Start Num: 35
Candidate Starts for Lolly9_83:
(Start: 27 @55667 has 64 MA's), (Start: 35 @55730 has 1 MA's), (42, 55790), (50, 55847),

Gene: Lumos_85 Start: 55811, Stop: 56029, Start Num: 27
Candidate Starts for Lumos_85:
(Start: 27 @55811 has 64 MA's), (Start: 35 @55874 has 1 MA's), (42, 55934), (50, 55991),

Gene: Lunahalos_92 Start: 57935, Stop: 58150, Start Num: 28
Candidate Starts for Lunahalos_92:
(Start: 28 @57935 has 106 MA's), (42, 58052), (45, 58079),

Gene: MAckerman_82 Start: 53207, Stop: 53425, Start Num: 27
Candidate Starts for MAckerman_82:
(Start: 27 @53207 has 64 MA's), (Start: 32 @53231 has 2 MA's), (40, 53318), (42, 53330), (43, 53333),
(50, 53387),

Gene: MacKat_89 Start: 53498, Stop: 53713, Start Num: 28
Candidate Starts for MacKat_89:
(Start: 28 @53498 has 106 MA's), (42, 53615), (45, 53642),

Gene: Malthus_60 Start: 39485, Stop: 39706, Start Num: 29
Candidate Starts for Malthus_60:
(6, 39230), (7, 39239), (Start: 29 @39485 has 19 MA's), (Start: 32 @39500 has 2 MA's), (43, 39602),
(47, 39647),

Gene: Marcoliusprime_64 Start: 44409, Stop: 44627, Start Num: 30
Candidate Starts for Marcoliusprime_64:
(2, 43959), (3, 43980), (4, 43983), (Start: 30 @44409 has 10 MA's), (Start: 35 @44463 has 1 MA's),
(42, 44523), (43, 44526), (48, 44574),

Gene: MarkPhew_96 Start: 58534, Stop: 58749, Start Num: 28
Candidate Starts for MarkPhew_96:
(19, 58462), (20, 58465), (26, 58495), (Start: 28 @58534 has 106 MA's), (37, 58600), (39, 58630), (42,
58651), (43, 58654),

Gene: McMater_94 Start: 59417, Stop: 59632, Start Num: 28
Candidate Starts for McMater_94:
(Start: 28 @59417 has 106 MA's), (45, 59561),

Gene: Mdavu_74 Start: 53789, Stop: 54004, Start Num: 28
Candidate Starts for Mdavu_74:
(Start: 28 @53789 has 106 MA's), (38, 53861), (48, 53951),

Gene: MeaningOfLife_94 Start: 58610, Stop: 58825, Start Num: 28

Candidate Starts for MeaningOfLife_94:
(Start: 28 @58610 has 106 MA's), (42, 58727), (45, 58754),

Gene: Megsy_96 Start: 58270, Stop: 58485, Start Num: 28
Candidate Starts for Megsy_96:
(Start: 28 @58270 has 106 MA's), (42, 58387), (44, 58411), (47, 58429),

Gene: Miley16_86 Start: 55920, Stop: 56138, Start Num: 27
Candidate Starts for Miley16_86:
(Start: 27 @55920 has 64 MA's), (Start: 32 @55944 has 2 MA's), (34, 55974), (40, 56031), (42, 56043),
(50, 56100),

Gene: Milly_64 Start: 44382, Stop: 44600, Start Num: 30
Candidate Starts for Milly_64:
(2, 43932), (3, 43953), (4, 43956), (5, 44046), (Start: 30 @44382 has 10 MA's), (Start: 35 @44436 has
1 MA's), (42, 44496), (43, 44499), (48, 44547),

Gene: MiniLon_88 Start: 55668, Stop: 55886, Start Num: 27
Candidate Starts for MiniLon_88:
(Start: 27 @55668 has 64 MA's), (Start: 35 @55731 has 1 MA's), (42, 55791), (50, 55848),

Gene: MiniMac_88 Start: 55663, Stop: 55881, Start Num: 27
Candidate Starts for MiniMac_88:
(Start: 27 @55663 has 64 MA's), (Start: 35 @55726 has 1 MA's), (42, 55786), (50, 55843),

Gene: MissDaisy_57 Start: 39011, Stop: 39229, Start Num: 29
Candidate Starts for MissDaisy_57:
(6, 38762), (7, 38771), (Start: 29 @39011 has 19 MA's), (Start: 32 @39026 has 2 MA's), (43, 39128),
(47, 39173),

Gene: Mitti_59 Start: 39664, Stop: 39885, Start Num: 29
Candidate Starts for Mitti_59:
(6, 39409), (7, 39418), (Start: 29 @39664 has 19 MA's), (Start: 32 @39679 has 2 MA's), (43, 39781),
(47, 39826),

Gene: MkaliMitinis3_87 Start: 55769, Stop: 55987, Start Num: 27
Candidate Starts for MkaliMitinis3_87:
(Start: 27 @55769 has 64 MA's), (Start: 32 @55793 has 2 MA's), (34, 55823), (40, 55880), (42, 55892),
(50, 55949),

Gene: Moostard_82 Start: 55586, Stop: 55804, Start Num: 27
Candidate Starts for Moostard_82:
(Start: 27 @55586 has 64 MA's), (Start: 35 @55649 has 1 MA's), (42, 55709), (50, 55766),

Gene: MortyNRick_36 Start: 29129, Stop: 28914, Start Num: 28
Candidate Starts for MortyNRick_36:
(Start: 28 @29129 has 106 MA's), (49, 28964),

Gene: MsGreen_85 Start: 55813, Stop: 56031, Start Num: 27
Candidate Starts for MsGreen_85:
(Start: 27 @55813 has 64 MA's), (Start: 35 @55876 has 1 MA's), (42, 55936), (50, 55993),

Gene: Mufasa_64 Start: 43969, Stop: 44187, Start Num: 30

Candidate Starts for Mufasa_64:

(2, 43522), (3, 43543), (4, 43546), (Start: 30 @43969 has 10 MA's), (Start: 35 @44023 has 1 MA's), (42, 44083), (43, 44086),

Gene: Murucutumbu_92 Start: 58828, Stop: 59043, Start Num: 28

Candidate Starts for Murucutumbu_92:

(Start: 28 @58828 has 106 MA's), (42, 58945), (44, 58969), (47, 58987),

Gene: Mynx_93 Start: 58233, Stop: 58448, Start Num: 28

Candidate Starts for Mynx_93:

(Start: 28 @58233 has 106 MA's), (42, 58350), (45, 58377),

Gene: Nergal_73 Start: 49582, Stop: 49794, Start Num: 28

Candidate Starts for Nergal_73:

(Start: 28 @49582 has 106 MA's), (38, 49654), (42, 49699), (43, 49702),

Gene: Netyap_87 Start: 55921, Stop: 56139, Start Num: 27

Candidate Starts for Netyap_87:

(Start: 27 @55921 has 64 MA's), (Start: 32 @55945 has 2 MA's), (34, 55975), (40, 56032), (42, 56044), (50, 56101),

Gene: Nibb_96 Start: 58278, Stop: 58493, Start Num: 28

Candidate Starts for Nibb_96:

(Start: 28 @58278 has 106 MA's), (37, 58344), (39, 58374), (42, 58395),

Gene: Nicholas_82 Start: 55591, Stop: 55809, Start Num: 27

Candidate Starts for Nicholas_82:

(Start: 27 @55591 has 64 MA's), (Start: 35 @55654 has 1 MA's), (42, 55714), (50, 55771),

Gene: Nicholasp3_86 Start: 55755, Stop: 55973, Start Num: 27

Candidate Starts for Nicholasp3_86:

(Start: 27 @55755 has 64 MA's), (Start: 32 @55779 has 2 MA's), (34, 55809), (40, 55866), (42, 55878), (50, 55935),

Gene: Nikao_76 Start: 56398, Stop: 56613, Start Num: 28

Candidate Starts for Nikao_76:

(Start: 28 @56398 has 106 MA's), (38, 56470), (48, 56560),

Gene: Niklas_94 Start: 59018, Stop: 59233, Start Num: 28

Candidate Starts for Niklas_94:

(Start: 28 @59018 has 106 MA's), (45, 59162),

Gene: Nutello_73 Start: 53785, Stop: 54000, Start Num: 28

Candidate Starts for Nutello_73:

(Start: 28 @53785 has 106 MA's), (38, 53857), (48, 53947),

Gene: OhShagHennessy_80 Start: 53467, Stop: 53685, Start Num: 27

Candidate Starts for OhShagHennessy_80:

(Start: 27 @53467 has 64 MA's), (Start: 32 @53491 has 2 MA's), (40, 53578), (42, 53590), (43, 53593), (50, 53647),

Gene: OmniCritical_58 Start: 39473, Stop: 39694, Start Num: 29

Candidate Starts for OmniCritical_58:

(6, 39218), (7, 39227), (Start: 29 @39473 has 19 MA's), (Start: 32 @39488 has 2 MA's), (43, 39590), (47, 39635),

Gene: Oscar_97 Start: 58792, Stop: 59007, Start Num: 28

Candidate Starts for Oscar_97:

(Start: 28 @58792 has 106 MA's), (Start: 35 @58849 has 1 MA's), (42, 58909), (43, 58912),

Gene: PYPDinur_83 Start: 54952, Stop: 55149, Start Num: 31

Candidate Starts for PYPDinur_83:

(11, 54775), (12, 54781), (14, 54820), (16, 54832), (17, 54847), (18, 54856), (Start: 27 @54931 has 64 MA's), (Start: 31 @54952 has 1 MA's), (Start: 35 @54994 has 1 MA's), (42, 55054), (43, 55057), (46, 55081), (50, 55111), (51, 55123),

Gene: Padfoot_92 Start: 58132, Stop: 58347, Start Num: 28

Candidate Starts for Padfoot_92:

(Start: 28 @58132 has 106 MA's), (42, 58249), (45, 58276),

Gene: Padpat_97 Start: 58537, Stop: 58752, Start Num: 28

Candidate Starts for Padpat_97:

(Start: 28 @58537 has 106 MA's), (42, 58654), (45, 58681),

Gene: Patt_56 Start: 38735, Stop: 38953, Start Num: 29

Candidate Starts for Patt_56:

(6, 38486), (7, 38495), (Start: 29 @38735 has 19 MA's), (Start: 32 @38750 has 2 MA's), (43, 38852), (47, 38897),

Gene: Peanam_94 Start: 59085, Stop: 59300, Start Num: 28

Candidate Starts for Peanam_94:

(Start: 28 @59085 has 106 MA's), (45, 59229),

Gene: Peel_92 Start: 57938, Stop: 58153, Start Num: 28

Candidate Starts for Peel_92:

(Start: 28 @57938 has 106 MA's), (42, 58055), (45, 58082),

Gene: Piatt_91 Start: 58132, Stop: 58347, Start Num: 28

Candidate Starts for Piatt_91:

(Start: 28 @58132 has 106 MA's), (42, 58249), (45, 58276),

Gene: Pokerus_92 Start: 57943, Stop: 58158, Start Num: 28

Candidate Starts for Pokerus_92:

(Start: 28 @57943 has 106 MA's), (42, 58060), (45, 58087),

Gene: Pochiewood_81 Start: 54550, Stop: 54768, Start Num: 27

Candidate Starts for Pochiewood_81:

(Start: 27 @54550 has 64 MA's), (Start: 32 @54574 has 2 MA's), (40, 54661), (42, 54673), (43, 54676), (50, 54730),

Gene: Powerball_29 Start: 25934, Stop: 25719, Start Num: 28

Candidate Starts for Powerball_29:

(Start: 28 @25934 has 106 MA's), (33, 25913), (49, 25769),

Gene: Prithvi_94 Start: 58539, Stop: 58754, Start Num: 28

Candidate Starts for Prithvi_94:

(Start: 28 @58539 has 106 MA's), (42, 58656), (43, 58659), (44, 58680), (47, 58698),

Gene: Quby_84 Start: 54259, Stop: 54477, Start Num: 27

Candidate Starts for Quby_84:

(11, 54103), (12, 54109), (14, 54148), (16, 54160), (17, 54175), (18, 54184), (Start: 27 @54259 has 64 MA's), (Start: 31 @54280 has 1 MA's), (Start: 35 @54322 has 1 MA's), (42, 54382), (43, 54385), (46, 54409), (50, 54439), (51, 54451),

Gene: QuincyRose_90 Start: 57946, Stop: 58161, Start Num: 28

Candidate Starts for QuincyRose_90:

(Start: 28 @57946 has 106 MA's), (42, 58063), (45, 58090),

Gene: Ramen_93 Start: 57689, Stop: 57904, Start Num: 28

Candidate Starts for Ramen_93:

(Start: 28 @57689 has 106 MA's), (42, 57806), (45, 57833),

Gene: Rapunzel97_94 Start: 57914, Stop: 58129, Start Num: 28

Candidate Starts for Rapunzel97_94:

(Start: 28 @57914 has 106 MA's), (42, 58031), (45, 58058),

Gene: Red305_86 Start: 55814, Stop: 56032, Start Num: 27

Candidate Starts for Red305_86:

(Start: 27 @55814 has 64 MA's), (Start: 35 @55877 has 1 MA's), (42, 55937), (50, 55994),

Gene: Reptar3000_57 Start: 38723, Stop: 38941, Start Num: 29

Candidate Starts for Reptar3000_57:

(6, 38474), (7, 38483), (Start: 29 @38723 has 19 MA's), (Start: 32 @38738 has 2 MA's), (43, 38840), (47, 38885),

Gene: Richo_94 Start: 59417, Stop: 59632, Start Num: 28

Candidate Starts for Richo_94:

(Start: 28 @59417 has 106 MA's), (45, 59561),

Gene: Rose5_84 Start: 54387, Stop: 54605, Start Num: 27

Candidate Starts for Rose5_84:

(Start: 27 @54387 has 64 MA's), (Start: 32 @54411 has 2 MA's), (40, 54498), (42, 54510), (43, 54513), (50, 54567),

Gene: Rosmarinus_92 Start: 57923, Stop: 58138, Start Num: 28

Candidate Starts for Rosmarinus_92:

(Start: 28 @57923 has 106 MA's), (42, 58040), (45, 58067),

Gene: Rumpelstiltskin_83 Start: 55548, Stop: 55766, Start Num: 27

Candidate Starts for Rumpelstiltskin_83:

(Start: 27 @55548 has 64 MA's), (Start: 32 @55572 has 2 MA's), (34, 55602), (40, 55659), (42, 55671), (50, 55728),

Gene: Ruthiejr_60 Start: 39535, Stop: 39756, Start Num: 29

Candidate Starts for Ruthiejr_60:

(6, 39280), (7, 39289), (Start: 29 @39535 has 19 MA's), (Start: 32 @39550 has 2 MA's), (43, 39652), (47, 39697),

Gene: SamScheppers_57 Start: 39964, Stop: 40185, Start Num: 29

Candidate Starts for SamScheppers_57:

(6, 39709), (7, 39718), (Start: 29 @39964 has 19 MA's), (Start: 32 @39979 has 2 MA's), (43, 40081), (47, 40126),

Gene: Samty_83 Start: 55579, Stop: 55797, Start Num: 27

Candidate Starts for Samty_83:

(Start: 27 @55579 has 64 MA's), (Start: 35 @55642 has 1 MA's), (42, 55702), (50, 55759),

Gene: SamuelLPlaqson_93 Start: 58379, Stop: 58594, Start Num: 28

Candidate Starts for SamuelLPlaqson_93:

(Start: 28 @58379 has 106 MA's), (42, 58496), (45, 58523),

Gene: Sarshaun_87 Start: 56013, Stop: 56231, Start Num: 27

Candidate Starts for Sarshaun_87:

(Start: 27 @56013 has 64 MA's), (Start: 32 @56037 has 2 MA's), (34, 56067), (40, 56124), (42, 56136), (50, 56193),

Gene: Scarlett_96 Start: 58661, Stop: 58876, Start Num: 28

Candidate Starts for Scarlett_96:

(Start: 28 @58661 has 106 MA's), (Start: 35 @58718 has 1 MA's), (42, 58778), (43, 58781),

Gene: SgtBeansprout_74 Start: 53785, Stop: 54000, Start Num: 28

Candidate Starts for SgtBeansprout_74:

(Start: 28 @53785 has 106 MA's), (38, 53857), (48, 53947),

Gene: Shaobing_93 Start: 59059, Stop: 59274, Start Num: 28

Candidate Starts for Shaobing_93:

(Start: 28 @59059 has 106 MA's), (45, 59203),

Gene: Sheng711_85 Start: 54586, Stop: 54783, Start Num: 31

Candidate Starts for Sheng711_85:

(11, 54409), (12, 54415), (14, 54454), (16, 54466), (17, 54481), (18, 54490), (Start: 27 @54565 has 64 MA's), (Start: 31 @54586 has 1 MA's), (Start: 35 @54628 has 1 MA's), (42, 54688), (43, 54691), (46, 54715), (50, 54745),

Gene: ShiaSurprise_94 Start: 58132, Stop: 58347, Start Num: 28

Candidate Starts for ShiaSurprise_94:

(Start: 28 @58132 has 106 MA's), (42, 58249), (45, 58276),

Gene: Silverleaf_83 Start: 53843, Stop: 54061, Start Num: 27

Candidate Starts for Silverleaf_83:

(Start: 27 @53843 has 64 MA's), (Start: 32 @53867 has 2 MA's), (40, 53954), (42, 53966), (43, 53969), (50, 54023),

Gene: SirPhilip_93 Start: 58618, Stop: 58833, Start Num: 28

Candidate Starts for SirPhilip_93:

(22, 58555), (26, 58579), (Start: 28 @58618 has 106 MA's), (41, 58732), (42, 58735),

Gene: Slarp_59 Start: 39492, Stop: 39713, Start Num: 29

Candidate Starts for Slarp_59:

(6, 39237), (7, 39246), (Start: 29 @39492 has 19 MA's), (Start: 32 @39507 has 2 MA's), (43, 39609), (47, 39654),

Gene: Slimphazie_94 Start: 58370, Stop: 58585, Start Num: 28
Candidate Starts for Slimphazie_94:
(Start: 28 @58370 has 106 MA's), (42, 58487), (45, 58514),

Gene: Snenia_84 Start: 55815, Stop: 56033, Start Num: 27
Candidate Starts for Snenia_84:
(Start: 27 @55815 has 64 MA's), (Start: 35 @55878 has 1 MA's), (42, 55938), (50, 55995),

Gene: SoJulia_88 Start: 57081, Stop: 57299, Start Num: 27
Candidate Starts for SoJulia_88:
(Start: 27 @57081 has 64 MA's), (Start: 32 @57105 has 2 MA's), (34, 57135), (40, 57192), (42, 57204),
(50, 57261),

Gene: Soap141_86 Start: 56013, Stop: 56231, Start Num: 27
Candidate Starts for Soap141_86:
(Start: 27 @56013 has 64 MA's), (Start: 32 @56037 has 2 MA's), (34, 56067), (40, 56124), (42, 56136),
(50, 56193),

Gene: Spock_92 Start: 57936, Stop: 58151, Start Num: 28
Candidate Starts for Spock_92:
(Start: 28 @57936 has 106 MA's), (42, 58053), (45, 58080),

Gene: Stinson_93 Start: 58112, Stop: 58327, Start Num: 28
Candidate Starts for Stinson_93:
(Start: 28 @58112 has 106 MA's), (42, 58229), (45, 58256),

Gene: Strobilo_65 Start: 44384, Stop: 44602, Start Num: 30
Candidate Starts for Strobilo_65:
(2, 43934), (3, 43955), (4, 43958), (Start: 30 @44384 has 10 MA's), (Start: 35 @44438 has 1 MA's),
(42, 44498), (43, 44501), (48, 44549),

Gene: Sulley_89 Start: 57697, Stop: 57912, Start Num: 28
Candidate Starts for Sulley_89:
(9, 57529), (10, 57532), (13, 57556), (21, 57634), (25, 57649), (Start: 28 @57697 has 106 MA's), (42,
57814), (45, 57841),

Gene: TM4_61 Start: 38736, Stop: 38954, Start Num: 30
Candidate Starts for TM4_61:
(1, 38271), (2, 38289), (3, 38310), (4, 38313), (Start: 30 @38736 has 10 MA's), (Start: 35 @38790 has
1 MA's), (42, 38850), (43, 38853), (48, 38901),

Gene: Tachez_92 Start: 57783, Stop: 57998, Start Num: 28
Candidate Starts for Tachez_92:
(Start: 28 @57783 has 106 MA's), (42, 57900), (45, 57927),

Gene: TaiwanKao_93 Start: 58179, Stop: 58394, Start Num: 28
Candidate Starts for TaiwanKao_93:
(Start: 28 @58179 has 106 MA's), (42, 58296), (43, 58299), (44, 58320), (47, 58338),

Gene: Taquito_58 Start: 39727, Stop: 39948, Start Num: 29
Candidate Starts for Taquito_58:
(Start: 29 @39727 has 19 MA's), (Start: 32 @39742 has 2 MA's), (43, 39844), (47, 39889),

Gene: Teejan_75 Start: 56398, Stop: 56613, Start Num: 28
Candidate Starts for Teejan_75:
(Start: 28 @56398 has 106 MA's), (38, 56470), (48, 56560),

Gene: TingHuaYa_96 Start: 59163, Stop: 59378, Start Num: 28
Candidate Starts for TingHuaYa_96:
(Start: 28 @59163 has 106 MA's), (43, 59283), (45, 59307),

Gene: TiniBug_91 Start: 58494, Stop: 58709, Start Num: 28
Candidate Starts for TiniBug_91:
(Start: 28 @58494 has 106 MA's), (42, 58611), (45, 58638),

Gene: Tiri_93 Start: 57677, Stop: 57892, Start Num: 28
Candidate Starts for Tiri_93:
(Start: 28 @57677 has 106 MA's), (42, 57794), (45, 57821),

Gene: Topper_92 Start: 57935, Stop: 58150, Start Num: 28
Candidate Starts for Topper_92:
(Start: 28 @57935 has 106 MA's), (42, 58052), (45, 58079),

Gene: Torres_75 Start: 56399, Stop: 56614, Start Num: 28
Candidate Starts for Torres_75:
(Start: 28 @56399 has 106 MA's), (38, 56471), (48, 56561),

Gene: Tourach_85 Start: 56040, Stop: 56255, Start Num: 27
Candidate Starts for Tourach_85:
(Start: 27 @56040 has 64 MA's), (Start: 32 @56064 has 2 MA's), (42, 56163), (50, 56220),

Gene: TreyKay_94 Start: 58539, Stop: 58754, Start Num: 28
Candidate Starts for TreyKay_94:
(Start: 28 @58539 has 106 MA's), (42, 58656), (43, 58659), (44, 58680), (47, 58698),

Gene: TriFive_85 Start: 55927, Stop: 56145, Start Num: 27
Candidate Starts for TriFive_85:
(Start: 27 @55927 has 64 MA's), (Start: 35 @55990 has 1 MA's), (42, 56050), (50, 56107),

Gene: TruffulaTree_94 Start: 58336, Stop: 58551, Start Num: 28
Candidate Starts for TruffulaTree_94:
(Start: 28 @58336 has 106 MA's), (42, 58453), (45, 58480),

Gene: Twitch_92 Start: 57938, Stop: 58153, Start Num: 28
Candidate Starts for Twitch_92:
(Start: 28 @57938 has 106 MA's), (42, 58055), (45, 58082),

Gene: Tyson_84 Start: 54313, Stop: 54531, Start Num: 27
Candidate Starts for Tyson_84:
(Start: 27 @54313 has 64 MA's), (Start: 32 @54337 has 2 MA's), (40, 54424), (42, 54436), (43, 54439),
(50, 54493),

Gene: UPIE_82 Start: 53933, Stop: 54127, Start Num: 32
Candidate Starts for UPIE_82:
(Start: 27 @53909 has 64 MA's), (Start: 32 @53933 has 2 MA's), (40, 54020), (42, 54032), (43, 54035),
(50, 54089),

Gene: Underpass_77 Start: 50791, Stop: 51009, Start Num: 27
Candidate Starts for Underpass_77:
(Start: 27 @50791 has 64 MA's), (Start: 32 @50815 has 2 MA's), (34, 50845), (40, 50902), (42, 50914),
(50, 50971),

Gene: Urkel_93 Start: 58379, Stop: 58594, Start Num: 28
Candidate Starts for Urkel_93:
(Start: 28 @58379 has 106 MA's), (42, 58496), (45, 58523),

Gene: Validus_99 Start: 59954, Stop: 60172, Start Num: 28
Candidate Starts for Validus_99:
(Start: 28 @59954 has 106 MA's), (Start: 32 @59972 has 2 MA's), (43, 60074), (45, 60098),

Gene: Veliki_93 Start: 57902, Stop: 58117, Start Num: 28
Candidate Starts for Veliki_93:
(Start: 28 @57902 has 106 MA's), (42, 58019), (45, 58046),

Gene: Vetrrix_85 Start: 55617, Stop: 55835, Start Num: 27
Candidate Starts for Vetrrix_85:
(Start: 27 @55617 has 64 MA's), (Start: 32 @55641 has 2 MA's), (34, 55671), (40, 55728), (42, 55740),
(50, 55797),

Gene: Wamburgexpress_83 Start: 54348, Stop: 54566, Start Num: 27
Candidate Starts for Wamburgexpress_83:
(Start: 27 @54348 has 64 MA's), (Start: 32 @54372 has 2 MA's), (40, 54459), (42, 54471), (43, 54474),
(50, 54528),

Gene: Whirlwind_85 Start: 55822, Stop: 56040, Start Num: 27
Candidate Starts for Whirlwind_85:
(Start: 27 @55822 has 64 MA's), (Start: 35 @55885 has 1 MA's), (42, 55945), (50, 56002),

Gene: Wigglewigggle_85 Start: 55562, Stop: 55777, Start Num: 27
Candidate Starts for Wigglewigggle_85:
(Start: 27 @55562 has 64 MA's), (Start: 32 @55586 has 2 MA's), (34, 55616), (40, 55673), (42, 55685),
(50, 55742),

Gene: Wilder_87 Start: 55706, Stop: 55924, Start Num: 27
Candidate Starts for Wilder_87:
(Start: 27 @55706 has 64 MA's), (Start: 32 @55730 has 2 MA's), (34, 55760), (40, 55817), (42, 55829),
(50, 55886),

Gene: Winky_86 Start: 55920, Stop: 56138, Start Num: 27
Candidate Starts for Winky_86:
(Start: 27 @55920 has 64 MA's), (Start: 32 @55944 has 2 MA's), (34, 55974), (40, 56031), (42, 56043),
(50, 56100),

Gene: Wintermute_59 Start: 39722, Stop: 39943, Start Num: 29
Candidate Starts for Wintermute_59:
(6, 39467), (7, 39476), (Start: 29 @39722 has 19 MA's), (Start: 32 @39737 has 2 MA's), (43, 39839),
(47, 39884),

Gene: Wyatt2_84 Start: 54311, Stop: 54529, Start Num: 27

Candidate Starts for Wyatt2_84:

(Start: 27 @54311 has 64 MA's), (Start: 32 @54335 has 2 MA's), (40, 54422), (42, 54434), (43, 54437), (50, 54491),

Gene: Y10_58 Start: 39650, Stop: 39871, Start Num: 29

Candidate Starts for Y10_58:

(6, 39395), (7, 39404), (Start: 29 @39650 has 19 MA's), (Start: 32 @39665 has 2 MA's), (43, 39767), (47, 39812),

Gene: Y2_58 Start: 39650, Stop: 39871, Start Num: 29

Candidate Starts for Y2_58:

(6, 39395), (7, 39404), (Start: 29 @39650 has 19 MA's), (Start: 32 @39665 has 2 MA's), (43, 39767), (47, 39812),

Gene: YoureAdopted_91 Start: 57731, Stop: 57946, Start Num: 28

Candidate Starts for YoureAdopted_91:

(Start: 28 @57731 has 106 MA's), (42, 57848), (45, 57875),

Gene: Yunkel11_97 Start: 58671, Stop: 58886, Start Num: 28

Candidate Starts for Yunkel11_97:

(Start: 28 @58671 has 106 MA's), (43, 58791), (45, 58815),

Gene: Zabiza_88 Start: 54275, Stop: 54490, Start Num: 28

Candidate Starts for Zabiza_88:

(Start: 28 @54275 has 106 MA's), (42, 54392), (45, 54419),

Gene: Zakai_87 Start: 56026, Stop: 56241, Start Num: 27

Candidate Starts for Zakai_87:

(Start: 27 @56026 has 64 MA's), (Start: 32 @56050 has 2 MA's), (34, 56080), (40, 56137), (42, 56149), (50, 56206),

Gene: Zaria_84 Start: 53763, Stop: 53981, Start Num: 27

Candidate Starts for Zaria_84:

(Start: 27 @53763 has 64 MA's), (Start: 32 @53787 has 2 MA's), (40, 53874), (42, 53886), (43, 53889), (50, 53943),

Gene: Zavala_94 Start: 58196, Stop: 58411, Start Num: 28

Candidate Starts for Zavala_94:

(Start: 28 @58196 has 106 MA's), (42, 58313), (45, 58340),

Gene: ZhongYanYuan_84 Start: 55753, Stop: 55971, Start Num: 27

Candidate Starts for ZhongYanYuan_84:

(Start: 27 @55753 has 64 MA's), (Start: 32 @55777 has 2 MA's), (34, 55807), (42, 55876), (50, 55933),

Gene: ZoeJ_63 Start: 43777, Stop: 43995, Start Num: 30

Candidate Starts for ZoeJ_63:

(2, 43330), (3, 43351), (4, 43354), (8, 43540), (Start: 30 @43777 has 10 MA's), (Start: 35 @43831 has 1 MA's), (42, 43891), (43, 43894),