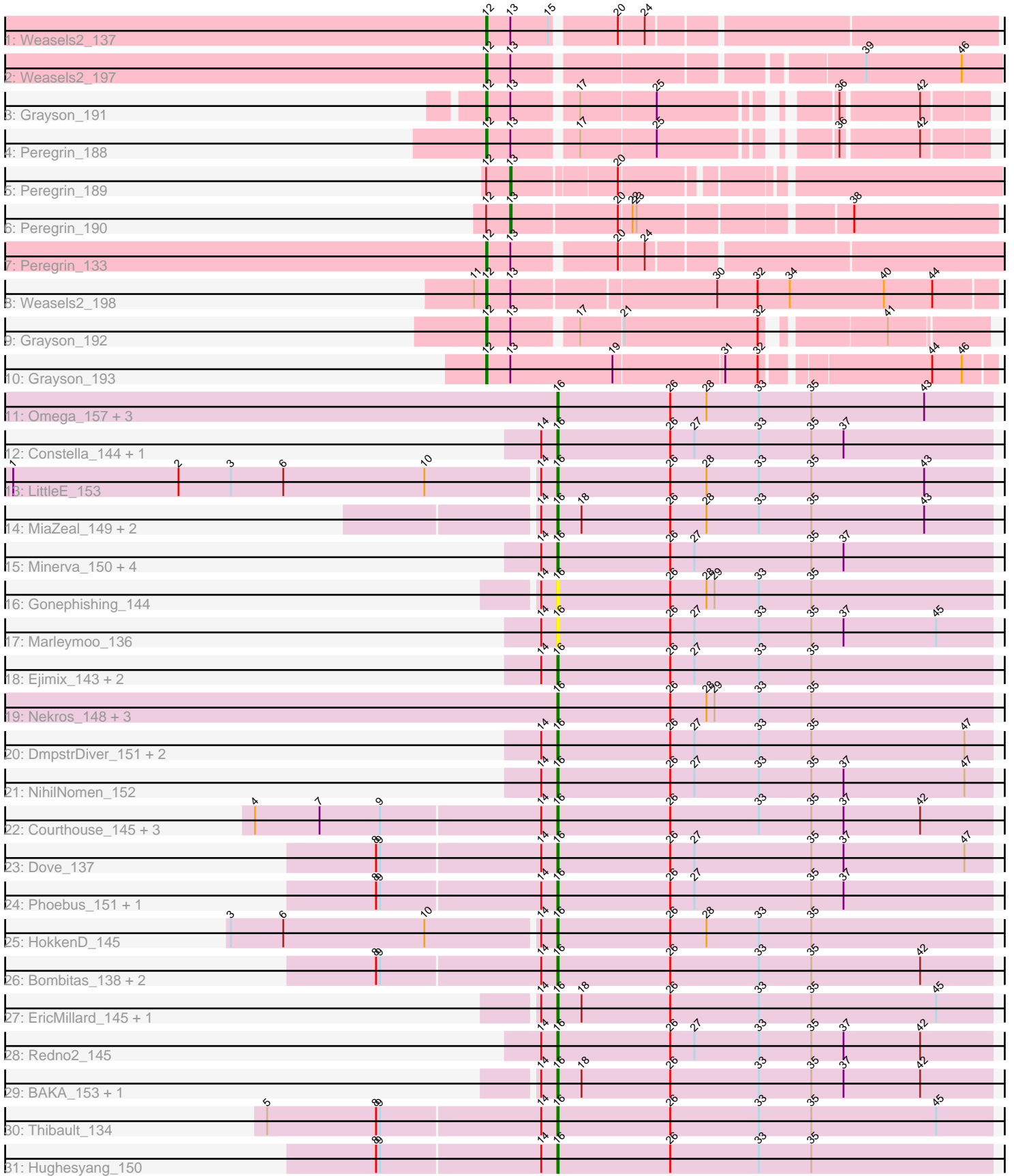


Pham 212658



Note: Tracks are now grouped by subcluster and scaled. Switching in subcluster is indicated by changes in track color. Track scale is now set by default to display the region 30 bp upstream of start 1 to 30 bp downstream of the last possible start. If this default region is judged to be packed too tightly with annotated starts, the track will be further scaled to only show that region of the ORF with annotated starts. This action will be indicated by adding "Zoomed" to the title. For starts, yellow indicates the location of called starts comprised solely of Glimmer/GeneMark auto-annotations, green indicates the location of called starts with at least 1 manual gene annotation.

Pham 212658 Report

This analysis was run 02/22/25 on database version 588.

Pham number 212658 has 56 members, 6 are drafts.

Phages represented in each track:

- Track 1 : Weasels2_137
- Track 2 : Weasels2_197
- Track 3 : Grayson_191
- Track 4 : Peregrin_188
- Track 5 : Peregrin_189
- Track 6 : Peregrin_190
- Track 7 : Peregrin_133
- Track 8 : Weasels2_198
- Track 9 : Grayson_192
- Track 10 : Grayson_193
- Track 11 : Omega_157, Odette_156, Optimus_144, Shaboozey_148
- Track 12 : Constella_144, Bagrid_154
- Track 13 : LittleE_153
- Track 14 : MiaZeal_149, Porcelain_146, Lucky2013_142
- Track 15 : Minerva_150, Bobby_141, Wanda_150, Zelink_145, Kalah2_142
- Track 16 : Gonephishing_144
- Track 17 : Marleymoo_136
- Track 18 : Ejimix_143, Halley_152, Dallas_151
- Track 19 : Nekros_148, Hannaconda_144, KashFlow_150, Squint_142
- Track 20 : DmpstrDiver_151, Pound_142, Schatzie_146
- Track 21 : NihilNomen_152
- Track 22 : Courthouse_145, Ariel_149, Yeet_144, Superphikiman_147
- Track 23 : Dove_137
- Track 24 : Phoebus_151, ThreeRngTarjay_146
- Track 25 : HokkenD_145
- Track 26 : Bombitas_138, JuicyJay_146, Beem_153
- Track 27 : EricMillard_145, Duke13_149
- Track 28 : Redno2_145
- Track 29 : BAKA_153, Klein_150
- Track 30 : Thibault_134
- Track 31 : Hughesyang_150

Summary of Final Annotations (See graph section above for start numbers):

The start number called the most often in the published annotations is 16, it was called in 40 of the 50 non-draft genes in the pham.

Genes that call this "Most Annotated" start:

- Ariel_149, BAKA_153, Bagrid_154, Beem_153, Bobby_141, Bombitas_138, Constella_144, Courthouse_145, Dallas_151, DmpstrDiver_151, Dove_137, Duke13_149, Ejimix_143, EricMillard_145, Gonephishing_144, Halley_152, Hannaconda_144, HokkenD_145, Hughesyang_150, JuicyJay_146, Kalah2_142, KashFlow_150, Klein_150, LittleE_153, Lucky2013_142, Marleymoo_136, MiaZeal_149, Minerva_150, Nekros_148, NihilNomen_152, Odette_156, Omega_157, Optimus_144, Phoebus_151, Porcelain_146, Pound_142, Redno2_145, Schatzie_146, Shaboozey_148, Squint_142, Superphikiman_147, Thibault_134, ThreeRngTarjay_146, Wanda_150, Yeet_144, Zelink_145,

Genes that have the "Most Annotated" start but do not call it:

-

Genes that do not have the "Most Annotated" start:

- Grayson_191, Grayson_192, Grayson_193, Peregrin_133, Peregrin_188, Peregrin_189, Peregrin_190, Weasels2_137, Weasels2_197, Weasels2_198,

Summary by start number:

Start 12:

- Found in 10 of 56 (17.9%) of genes in pham
- Manual Annotations of this start: 8 of 50
- Called 80.0% of time when present
- Phage (with cluster) where this start called: Grayson_191 (CB), Grayson_192 (CB), Grayson_193 (CB), Peregrin_133 (CB), Peregrin_188 (CB), Weasels2_137 (CB), Weasels2_197 (CB), Weasels2_198 (CB),

Start 13:

- Found in 10 of 56 (17.9%) of genes in pham
- Manual Annotations of this start: 2 of 50
- Called 20.0% of time when present
- Phage (with cluster) where this start called: Peregrin_189 (CB), Peregrin_190 (CB),

Start 16:

- Found in 46 of 56 (82.1%) of genes in pham
- Manual Annotations of this start: 40 of 50
- Called 100.0% of time when present
- Phage (with cluster) where this start called: Ariel_149 (J), BAKA_153 (J), Bagrid_154 (J), Beem_153 (J), Bobby_141 (J), Bombitas_138 (J), Constella_144 (J), Courthouse_145 (J), Dallas_151 (J), DmpstrDiver_151 (J), Dove_137 (J), Duke13_149 (J), Ejimix_143 (J), EricMillard_145 (J), Gonephishing_144 (J), Halley_152 (J), Hannaconda_144 (J), HokkenD_145 (J), Hughesyang_150 (J), JuicyJay_146 (J), Kalah2_142 (J), KashFlow_150 (J), Klein_150 (J), LittleE_153 (J), Lucky2013_142 (J), Marleymoo_136 (J), MiaZeal_149 (J), Minerva_150 (J), Nekros_148 (J), NihilNomen_152 (J), Odette_156 (J), Omega_157 (J), Optimus_144 (J), Phoebus_151 (J), Porcelain_146 (J), Pound_142 (J), Redno2_145 (J), Schatzie_146 (J), Shaboozey_148 (J), Squint_142 (J), Superphikiman_147 (J), Thibault_134 (J), ThreeRngTarjay_146 (J), Wanda_150 (J), Yeet_144 (J), Zelink_145 (J),

Summary by clusters:

There are 2 clusters represented in this pham: CB, J,

Info for manual annotations of cluster CB:

- Start number 12 was manually annotated 8 times for cluster CB.
- Start number 13 was manually annotated 2 times for cluster CB.

Info for manual annotations of cluster J:

- Start number 16 was manually annotated 40 times for cluster J.

Gene Information:

Gene: Ariel_149 Start: 76661, Stop: 76984, Start Num: 16

Candidate Starts for Ariel_149:

(4, 76439), (7, 76487), (9, 76532), (14, 76649), (Start: 16 @76661 has 40 MA's), (26, 76745), (33, 76811), (35, 76850), (37, 76874), (42, 76931),

Gene: BAKA_153 Start: 81330, Stop: 81653, Start Num: 16

Candidate Starts for BAKA_153:

(14, 81318), (Start: 16 @81330 has 40 MA's), (18, 81348), (26, 81414), (33, 81480), (35, 81519), (37, 81543), (42, 81600),

Gene: Bagrid_154 Start: 82037, Stop: 82360, Start Num: 16

Candidate Starts for Bagrid_154:

(14, 82025), (Start: 16 @82037 has 40 MA's), (26, 82121), (27, 82139), (33, 82187), (35, 82226), (37, 82250),

Gene: Beem_153 Start: 81458, Stop: 81781, Start Num: 16

Candidate Starts for Beem_153:

(8, 81326), (9, 81329), (14, 81446), (Start: 16 @81458 has 40 MA's), (26, 81542), (33, 81608), (35, 81647), (42, 81728),

Gene: Bobby_141 Start: 81455, Stop: 81778, Start Num: 16

Candidate Starts for Bobby_141:

(14, 81443), (Start: 16 @81455 has 40 MA's), (26, 81539), (27, 81557), (35, 81644), (37, 81668),

Gene: Bombitas_138 Start: 78311, Stop: 78634, Start Num: 16

Candidate Starts for Bombitas_138:

(8, 78179), (9, 78182), (14, 78299), (Start: 16 @78311 has 40 MA's), (26, 78395), (33, 78461), (35, 78500), (42, 78581),

Gene: Constella_144 Start: 79520, Stop: 79843, Start Num: 16

Candidate Starts for Constella_144:

(14, 79508), (Start: 16 @79520 has 40 MA's), (26, 79604), (27, 79622), (33, 79670), (35, 79709), (37, 79733),

Gene: Courthouse_145 Start: 76519, Stop: 76842, Start Num: 16

Candidate Starts for Courthouse_145:

(4, 76297), (7, 76345), (9, 76390), (14, 76507), (Start: 16 @76519 has 40 MA's), (26, 76603), (33, 76669), (35, 76708), (37, 76732), (42, 76789),

Gene: Dallas_151 Start: 80367, Stop: 80690, Start Num: 16

Candidate Starts for Dallas_151:

(14, 80355), (Start: 16 @80367 has 40 MA's), (26, 80451), (27, 80469), (33, 80517), (35, 80556),

Gene: DmpstrDiver_151 Start: 80286, Stop: 80609, Start Num: 16

Candidate Starts for DmpstrDiver_151:

(14, 80274), (Start: 16 @80286 has 40 MA's), (26, 80370), (27, 80388), (33, 80436), (35, 80475), (47, 80589),

Gene: Dove_137 Start: 76474, Stop: 76797, Start Num: 16

Candidate Starts for Dove_137:

(8, 76342), (9, 76345), (14, 76462), (Start: 16 @76474 has 40 MA's), (26, 76558), (27, 76576), (35, 76663), (37, 76687), (47, 76777),

Gene: Duke13_149 Start: 79615, Stop: 79938, Start Num: 16

Candidate Starts for Duke13_149:

(14, 79603), (Start: 16 @79615 has 40 MA's), (18, 79633), (26, 79699), (33, 79765), (35, 79804), (45, 79897),

Gene: Ejimix_143 Start: 80435, Stop: 80758, Start Num: 16

Candidate Starts for Ejimix_143:

(14, 80423), (Start: 16 @80435 has 40 MA's), (26, 80519), (27, 80537), (33, 80585), (35, 80624),

Gene: EricMillard_145 Start: 80967, Stop: 81290, Start Num: 16

Candidate Starts for EricMillard_145:

(14, 80955), (Start: 16 @80967 has 40 MA's), (18, 80985), (26, 81051), (33, 81117), (35, 81156), (45, 81249),

Gene: Gonephishing_144 Start: 78607, Stop: 78930, Start Num: 16

Candidate Starts for Gonephishing_144:

(14, 78595), (Start: 16 @78607 has 40 MA's), (26, 78691), (28, 78718), (29, 78724), (33, 78757), (35, 78796),

Gene: Grayson_191 Start: 99709, Stop: 100023, Start Num: 12

Candidate Starts for Grayson_191:

(Start: 12 @99709 has 8 MA's), (Start: 13 @99727 has 2 MA's), (17, 99769), (25, 99823), (36, 99925), (42, 99979),

Gene: Grayson_192 Start: 100023, Stop: 100355, Start Num: 12

Candidate Starts for Grayson_192:

(Start: 12 @100023 has 8 MA's), (Start: 13 @100041 has 2 MA's), (17, 100083), (21, 100113), (32, 100212), (41, 100287),

Gene: Grayson_193 Start: 100355, Stop: 100708, Start Num: 12

Candidate Starts for Grayson_193:

(Start: 12 @100355 has 8 MA's), (Start: 13 @100373 has 2 MA's), (19, 100448), (31, 100526), (32, 100550), (44, 100664), (46, 100685),

Gene: Halley_152 Start: 80751, Stop: 81074, Start Num: 16

Candidate Starts for Halley_152:

(14, 80739), (Start: 16 @80751 has 40 MA's), (26, 80835), (27, 80853), (33, 80901), (35, 80940),

Gene: Hannaconda_144 Start: 79540, Stop: 79863, Start Num: 16

Candidate Starts for Hannaconda_144:

(Start: 16 @79540 has 40 MA's), (26, 79624), (28, 79651), (29, 79657), (33, 79690), (35, 79729),

Gene: HokkenD_145 Start: 81876, Stop: 82199, Start Num: 16

Candidate Starts for HokkenD_145:

(3, 81639), (6, 81678), (10, 81783), (14, 81864), (Start: 16 @81876 has 40 MA's), (26, 81960), (28, 81987), (33, 82026), (35, 82065),

Gene: Hughesyang_150 Start: 81110, Stop: 81433, Start Num: 16

Candidate Starts for Hughesyang_150:

(8, 80978), (9, 80981), (14, 81098), (Start: 16 @81110 has 40 MA's), (26, 81194), (33, 81260), (35, 81299),

Gene: JuicyJay_146 Start: 82036, Stop: 82359, Start Num: 16

Candidate Starts for JuicyJay_146:

(8, 81904), (9, 81907), (14, 82024), (Start: 16 @82036 has 40 MA's), (26, 82120), (33, 82186), (35, 82225), (42, 82306),

Gene: Kalah2_142 Start: 80240, Stop: 80563, Start Num: 16

Candidate Starts for Kalah2_142:

(14, 80228), (Start: 16 @80240 has 40 MA's), (26, 80324), (27, 80342), (35, 80429), (37, 80453),

Gene: KashFlow_150 Start: 79539, Stop: 79862, Start Num: 16

Candidate Starts for KashFlow_150:

(Start: 16 @79539 has 40 MA's), (26, 79623), (28, 79650), (29, 79656), (33, 79689), (35, 79728),

Gene: Klein_150 Start: 80105, Stop: 80428, Start Num: 16

Candidate Starts for Klein_150:

(14, 80093), (Start: 16 @80105 has 40 MA's), (18, 80123), (26, 80189), (33, 80255), (35, 80294), (37, 80318), (42, 80375),

Gene: LittleE_153 Start: 80985, Stop: 81308, Start Num: 16

Candidate Starts for LittleE_153:

(1, 80586), (2, 80709), (3, 80748), (6, 80787), (10, 80892), (14, 80973), (Start: 16 @80985 has 40 MA's), (26, 81069), (28, 81096), (33, 81135), (35, 81174), (43, 81258),

Gene: Lucky2013_142 Start: 75897, Stop: 76220, Start Num: 16

Candidate Starts for Lucky2013_142:

(14, 75885), (Start: 16 @75897 has 40 MA's), (18, 75915), (26, 75981), (28, 76008), (33, 76047), (35, 76086), (43, 76170),

Gene: Marleymoo_136 Start: 77201, Stop: 77524, Start Num: 16

Candidate Starts for Marleymoo_136:

(14, 77189), (Start: 16 @77201 has 40 MA's), (26, 77285), (27, 77303), (33, 77351), (35, 77390), (37, 77414), (45, 77483),

Gene: MiaZeal_149 Start: 77044, Stop: 77367, Start Num: 16

Candidate Starts for MiaZeal_149:

(14, 77032), (Start: 16 @77044 has 40 MA's), (18, 77062), (26, 77128), (28, 77155), (33, 77194), (35, 77233), (43, 77317),

Gene: Minerva_150 Start: 80059, Stop: 80382, Start Num: 16

Candidate Starts for Minerva_150:

(14, 80047), (Start: 16 @80059 has 40 MA's), (26, 80143), (27, 80161), (35, 80248), (37, 80272),

Gene: Nekros_148 Start: 79933, Stop: 80256, Start Num: 16

Candidate Starts for Nekros_148:

(Start: 16 @79933 has 40 MA's), (26, 80017), (28, 80044), (29, 80050), (33, 80083), (35, 80122),

Gene: NihilNomen_152 Start: 79960, Stop: 80283, Start Num: 16

Candidate Starts for NihilNomen_152:

(14, 79948), (Start: 16 @79960 has 40 MA's), (26, 80044), (27, 80062), (33, 80110), (35, 80149), (37, 80173), (47, 80263),

Gene: Odette_156 Start: 82653, Stop: 82976, Start Num: 16

Candidate Starts for Odette_156:

(Start: 16 @82653 has 40 MA's), (26, 82737), (28, 82764), (33, 82803), (35, 82842), (43, 82926),

Gene: Omega_157 Start: 82149, Stop: 82472, Start Num: 16

Candidate Starts for Omega_157:

(Start: 16 @82149 has 40 MA's), (26, 82233), (28, 82260), (33, 82299), (35, 82338), (43, 82422),

Gene: Optimus_144 Start: 79658, Stop: 79981, Start Num: 16

Candidate Starts for Optimus_144:

(Start: 16 @79658 has 40 MA's), (26, 79742), (28, 79769), (33, 79808), (35, 79847), (43, 79931),

Gene: Peregrin_188 Start: 100106, Stop: 100420, Start Num: 12

Candidate Starts for Peregrin_188:

(Start: 12 @100106 has 8 MA's), (Start: 13 @100124 has 2 MA's), (17, 100166), (25, 100220), (36, 100322), (42, 100376),

Gene: Peregrin_189 Start: 100438, Stop: 100764, Start Num: 13

Candidate Starts for Peregrin_189:

(Start: 12 @100420 has 8 MA's), (Start: 13 @100438 has 2 MA's), (20, 100510),

Gene: Peregrin_190 Start: 100766, Stop: 101101, Start Num: 13

Candidate Starts for Peregrin_190:

(Start: 12 @100748 has 8 MA's), (Start: 13 @100766 has 2 MA's), (20, 100841), (22, 100850), (23, 100853), (38, 100997),

Gene: Peregrin_133 Start: 79061, Stop: 79438, Start Num: 12

Candidate Starts for Peregrin_133:

(Start: 12 @79061 has 8 MA's), (Start: 13 @79079 has 2 MA's), (20, 79148), (24, 79166),

Gene: Phoebus_151 Start: 82464, Stop: 82787, Start Num: 16

Candidate Starts for Phoebus_151:

(8, 82332), (9, 82335), (14, 82452), (Start: 16 @82464 has 40 MA's), (26, 82548), (27, 82566), (35, 82653), (37, 82677),

Gene: Porcelain_146 Start: 76843, Stop: 77166, Start Num: 16

Candidate Starts for Porcelain_146:

(14, 76831), (Start: 16 @76843 has 40 MA's), (18, 76861), (26, 76927), (28, 76954), (33, 76993), (35, 77032), (43, 77116),

Gene: Pound_142 Start: 79694, Stop: 80017, Start Num: 16
Candidate Starts for Pound_142:
(14, 79682), (Start: 16 @79694 has 40 MA's), (26, 79778), (27, 79796), (33, 79844), (35, 79883), (47, 79997),

Gene: Redno2_145 Start: 77962, Stop: 78285, Start Num: 16
Candidate Starts for Redno2_145:
(14, 77950), (Start: 16 @77962 has 40 MA's), (26, 78046), (27, 78064), (33, 78112), (35, 78151), (37, 78175), (42, 78232),

Gene: Schatzie_146 Start: 80543, Stop: 80866, Start Num: 16
Candidate Starts for Schatzie_146:
(14, 80531), (Start: 16 @80543 has 40 MA's), (26, 80627), (27, 80645), (33, 80693), (35, 80732), (47, 80846),

Gene: Shaboozey_148 Start: 77632, Stop: 77955, Start Num: 16
Candidate Starts for Shaboozey_148:
(Start: 16 @77632 has 40 MA's), (26, 77716), (28, 77743), (33, 77782), (35, 77821), (43, 77905),

Gene: Squint_142 Start: 76328, Stop: 76651, Start Num: 16
Candidate Starts for Squint_142:
(Start: 16 @76328 has 40 MA's), (26, 76412), (28, 76439), (29, 76445), (33, 76478), (35, 76517),

Gene: Superphikiman_147 Start: 76801, Stop: 77124, Start Num: 16
Candidate Starts for Superphikiman_147:
(4, 76579), (7, 76627), (9, 76672), (14, 76789), (Start: 16 @76801 has 40 MA's), (26, 76885), (33, 76951), (35, 76990), (37, 77014), (42, 77071),

Gene: Thibault_134 Start: 77417, Stop: 77740, Start Num: 16
Candidate Starts for Thibault_134:
(5, 77204), (8, 77285), (9, 77288), (14, 77405), (Start: 16 @77417 has 40 MA's), (26, 77501), (33, 77567), (35, 77606), (45, 77699),

Gene: ThreeRngTarjay_146 Start: 81055, Stop: 81378, Start Num: 16
Candidate Starts for ThreeRngTarjay_146:
(8, 80923), (9, 80926), (14, 81043), (Start: 16 @81055 has 40 MA's), (26, 81139), (27, 81157), (35, 81244), (37, 81268),

Gene: Wanda_150 Start: 78530, Stop: 78853, Start Num: 16
Candidate Starts for Wanda_150:
(14, 78518), (Start: 16 @78530 has 40 MA's), (26, 78614), (27, 78632), (35, 78719), (37, 78743),

Gene: Weasels2_137 Start: 80331, Stop: 80681, Start Num: 12
Candidate Starts for Weasels2_137:
(Start: 12 @80331 has 8 MA's), (Start: 13 @80349 has 2 MA's), (15, 80376), (20, 80418), (24, 80436),

Gene: Weasels2_197 Start: 103724, Stop: 104071, Start Num: 12
Candidate Starts for Weasels2_197:
(Start: 12 @103724 has 8 MA's), (Start: 13 @103742 has 2 MA's), (39, 103973), (46, 104042),

Gene: Weasels2_198 Start: 104073, Stop: 104438, Start Num: 12
Candidate Starts for Weasels2_198:

(11, 104064), (Start: 12 @104073 has 8 MA's), (Start: 13 @104091 has 2 MA's), (30, 104235), (32, 104265), (34, 104289), (40, 104358), (44, 104394),

Gene: Yeet_144 Start: 79906, Stop: 80229, Start Num: 16

Candidate Starts for Yeet_144:

(4, 79684), (7, 79732), (9, 79777), (14, 79894), (Start: 16 @79906 has 40 MA's), (26, 79990), (33, 80056), (35, 80095), (37, 80119), (42, 80176),

Gene: Zelink_145 Start: 81372, Stop: 81695, Start Num: 16

Candidate Starts for Zelink_145:

(14, 81360), (Start: 16 @81372 has 40 MA's), (26, 81456), (27, 81474), (35, 81561), (37, 81585),