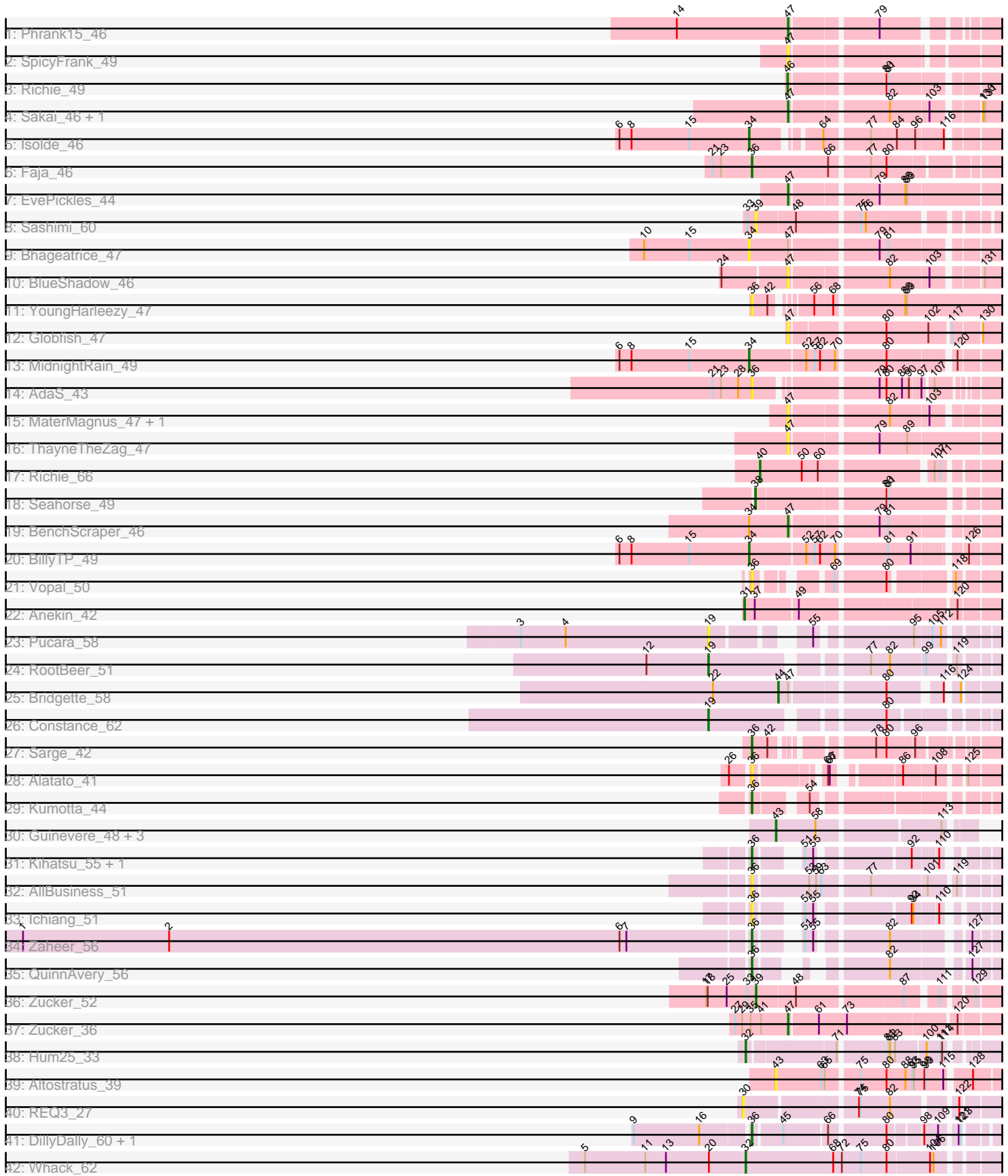


Pham 212689



Note: Tracks are now grouped by subcluster and scaled. Switching in subcluster is indicated by changes in track color. Track scale is now set by default to display the region 30 bp upstream of start 1 to 30 bp downstream of the last possible start. If this default region is judged to be packed too tightly with annotated starts, the track will be further scaled to only show that region of the ORF with annotated starts. This action will be indicated by adding "Zoomed" to the title. For starts, yellow indicates the location of called starts comprised solely of Glimmer/GeneMark auto-annotations, green indicates the location of called starts with at least 1 manual gene annotation.

Pham 212689 Report

This analysis was run 02/22/25 on database version 588.

Pham number 212689 has 49 members, 22 are drafts.

Phages represented in each track:

- Track 1 : Phrank15_46
- Track 2 : SpicyFrank_49
- Track 3 : Richie_49
- Track 4 : Sakai_46, Gorpy_47
- Track 5 : Isolde_46
- Track 6 : Faja_46
- Track 7 : EvePickles_44
- Track 8 : Sashimi_60
- Track 9 : Bhageatrice_47
- Track 10 : BlueShadow_46
- Track 11 : YoungHarleezy_47
- Track 12 : Globfish_47
- Track 13 : MidnightRain_49
- Track 14 : AdaS_43
- Track 15 : MaterMagnus_47, Aikyam_45
- Track 16 : ThayneTheZag_47
- Track 17 : Richie_66
- Track 18 : Seahorse_49
- Track 19 : BenchScraper_46
- Track 20 : BillyTP_49
- Track 21 : Vopal_50
- Track 22 : Anekin_42
- Track 23 : Pucara_58
- Track 24 : RootBeer_51
- Track 25 : Bridgette_58
- Track 26 : Constance_62
- Track 27 : Sarge_42
- Track 28 : Alatato_41
- Track 29 : Kumotta_44
- Track 30 : Guinevere_48, Ichiang_45, Kihatsu_48, Nandita_49
- Track 31 : Kihatsu_55, Nandita_55
- Track 32 : AllBusiness_51
- Track 33 : Ichiang_51
- Track 34 : Zaheer_56
- Track 35 : QuinnAvery_56
- Track 36 : Zucker_52
- Track 37 : Zucker_36

- Track 38 : Hum25_33
- Track 39 : Altostratus_39
- Track 40 : REQ3_27
- Track 41 : DillyDally_60, Zucker_56
- Track 42 : Whack_62

Summary of Final Annotations (See graph section above for start numbers):

The start number called the most often in the published annotations is 36, it was called in 7 of the 27 non-draft genes in the pham.

Genes that call this "Most Annotated" start:

- AdaS_43, Alatato_41, AllBusiness_51, DillyDally_60, Faja_46, Ichiang_51, Kihatsu_55, Kumotta_44, Nandita_55, QuinnAvery_56, Sarge_42, Vopal_50, YoungHarleezy_47, Zaheer_56, Zucker_56,

Genes that have the "Most Annotated" start but do not call it:

-

Genes that do not have the "Most Annotated" start:

- Aikyam_45, Altostratus_39, Anekin_42, BenchScraper_46, Bhageatrice_47, BillyTP_49, BlueShadow_46, Bridgette_58, Constance_62, EvePickles_44, Globfish_47, Gorpy_47, Guinevere_48, Hum25_33, Ichiang_45, Isolde_46, Kihatsu_48, MaterMagnus_47, MidnightRain_49, Nandita_49, Phrank15_46, Pucara_58, REQ3_27, Richie_49, Richie_66, RootBeer_51, Sakai_46, Sashimi_60, Seahorse_49, SpicyFrank_49, ThayneTheZag_47, Whack_62, Zucker_36, Zucker_52,

Summary by start number:

Start 19:

- Found in 3 of 49 (6.1%) of genes in pham
- Manual Annotations of this start: 2 of 27
- Called 100.0% of time when present
- Phage (with cluster) where this start called: Constance_62 (FA), Pucara_58 (FA), RootBeer_51 (FA),

Start 30:

- Found in 1 of 49 (2.0%) of genes in pham
- No Manual Annotations of this start.
- Called 100.0% of time when present
- Phage (with cluster) where this start called: REQ3_27 (singleton),

Start 31:

- Found in 1 of 49 (2.0%) of genes in pham
- Manual Annotations of this start: 1 of 27
- Called 100.0% of time when present
- Phage (with cluster) where this start called: Anekin_42 (AY),

Start 32:

- Found in 2 of 49 (4.1%) of genes in pham
- Manual Annotations of this start: 2 of 27
- Called 100.0% of time when present
- Phage (with cluster) where this start called: Hum25_33 (FQ), Whack_62 (singleton),

Start 34:

- Found in 5 of 49 (10.2%) of genes in pham
- Manual Annotations of this start: 3 of 27
- Called 80.0% of time when present
- Phage (with cluster) where this start called: Bhageatrice_47 (AY), BillyTP_49 (AY), Isolde_46 (AY), MidnightRain_49 (AY),

Start 36:

- Found in 15 of 49 (30.6%) of genes in pham
- Manual Annotations of this start: 7 of 27
- Called 100.0% of time when present
- Phage (with cluster) where this start called: AdaS_43 (AY), Alatato_41 (FB), AllBusiness_51 (FF), DillyDally_60 (singleton), Faja_46 (AY), Ichiang_51 (FF), Kihatsu_55 (FF), Kumotta_44 (FB), Nandita_55 (FF), QuinnAvery_56 (FF), Sarge_42 (FB), Vopal_50 (AY), YoungHarleezy_47 (AY), Zaheer_56 (FF), Zucker_56 (FN),

Start 38:

- Found in 1 of 49 (2.0%) of genes in pham
- Manual Annotations of this start: 1 of 27
- Called 100.0% of time when present
- Phage (with cluster) where this start called: Seahorse_49 (AY),

Start 39:

- Found in 2 of 49 (4.1%) of genes in pham
- Manual Annotations of this start: 1 of 27
- Called 100.0% of time when present
- Phage (with cluster) where this start called: Sashimi_60 (AY), Zucker_52 (FN),

Start 40:

- Found in 1 of 49 (2.0%) of genes in pham
- Manual Annotations of this start: 1 of 27
- Called 100.0% of time when present
- Phage (with cluster) where this start called: Richie_66 (AY),

Start 43:

- Found in 5 of 49 (10.2%) of genes in pham
- Manual Annotations of this start: 1 of 27
- Called 100.0% of time when present
- Phage (with cluster) where this start called: Altostratus_39 (FS), Guinevere_48 (FF), Ichiang_45 (FF), Kihatsu_48 (FF), Nandita_49 (FF),

Start 44:

- Found in 1 of 49 (2.0%) of genes in pham
- Manual Annotations of this start: 1 of 27
- Called 100.0% of time when present
- Phage (with cluster) where this start called: Bridgette_58 (FA),

Start 46:

- Found in 1 of 49 (2.0%) of genes in pham
- Manual Annotations of this start: 1 of 27
- Called 100.0% of time when present
- Phage (with cluster) where this start called: Richie_49 (AY),

Start 47:

- Found in 14 of 49 (28.6%) of genes in pham
- Manual Annotations of this start: 6 of 27
- Called 85.7% of time when present
- Phage (with cluster) where this start called: Aikyam_45 (AY), BenchScraper_46 (AY), BlueShadow_46 (AY), EvePickles_44 (AY), Globfish_47 (AY), Gorpy_47 (AY), MaterMagnus_47 (AY), Phrank15_46 (AY), Sakai_46 (AY), SpicyFrank_49 (AY), ThayneTheZag_47 (AY), Zucker_36 (FN),

Summary by clusters:

There are 8 clusters represented in this pham: FQ, singleton, FS, FA, FB, FF, AY, FN,

Info for manual annotations of cluster AY:

- Start number 31 was manually annotated 1 time for cluster AY.
- Start number 34 was manually annotated 3 times for cluster AY.
- Start number 36 was manually annotated 1 time for cluster AY.
- Start number 38 was manually annotated 1 time for cluster AY.
- Start number 40 was manually annotated 1 time for cluster AY.
- Start number 46 was manually annotated 1 time for cluster AY.
- Start number 47 was manually annotated 5 times for cluster AY.

Info for manual annotations of cluster FA:

- Start number 19 was manually annotated 2 times for cluster FA.
- Start number 44 was manually annotated 1 time for cluster FA.

Info for manual annotations of cluster FB:

- Start number 36 was manually annotated 2 times for cluster FB.

Info for manual annotations of cluster FF:

- Start number 36 was manually annotated 3 times for cluster FF.
- Start number 43 was manually annotated 1 time for cluster FF.

Info for manual annotations of cluster FN:

- Start number 36 was manually annotated 1 time for cluster FN.
- Start number 39 was manually annotated 1 time for cluster FN.
- Start number 47 was manually annotated 1 time for cluster FN.

Info for manual annotations of cluster FQ:

- Start number 32 was manually annotated 1 time for cluster FQ.

Gene Information:

Gene: AdaS_43 Start: 27993, Stop: 28319, Start Num: 36
Candidate Starts for AdaS_43:

(21, 27924), (23, 27939), (28, 27969), (Start: 36 @27993 has 7 MA's), (79, 28167), (80, 28176), (85, 28200), (90, 28212), (97, 28227), (107, 28242),

Gene: Aikyam_45 Start: 27569, Stop: 27871, Start Num: 47
Candidate Starts for Aikyam_45:
(Start: 47 @27569 has 6 MA's), (82, 27716), (103, 27776),

Gene: Alatato_41 Start: 27251, Stop: 27568, Start Num: 36
Candidate Starts for Alatato_41:
(26, 27221), (Start: 36 @27251 has 7 MA's), (66, 27344), (67, 27347), (86, 27434), (108, 27485), (125, 27521),

Gene: AllBusiness_51 Start: 37847, Stop: 38209, Start Num: 36
Candidate Starts for AllBusiness_51:
(Start: 36 @37847 has 7 MA's), (53, 37934), (59, 37946), (63, 37955), (77, 38030), (101, 38117), (119, 38153),

Gene: Altostratus_39 Start: 26248, Stop: 25892, Start Num: 43
Candidate Starts for Altostratus_39:
(Start: 43 @26248 has 1 MA's), (63, 26173), (65, 26167), (75, 26116), (80, 26071), (88, 26038), (93, 26026), (95, 26023), (98, 26005), (99, 26002), (115, 25972), (128, 25936),

Gene: Anekin_42 Start: 29225, Stop: 29605, Start Num: 31
Candidate Starts for Anekin_42:
(Start: 31 @29225 has 1 MA's), (37, 29243), (49, 29306), (120, 29543),

Gene: BenchScraper_46 Start: 29313, Stop: 29612, Start Num: 47
Candidate Starts for BenchScraper_46:
(Start: 34 @29250 has 3 MA's), (Start: 47 @29313 has 6 MA's), (79, 29445), (81, 29457),

Gene: Bhageatrice_47 Start: 31181, Stop: 31543, Start Num: 34
Candidate Starts for Bhageatrice_47:
(10, 30998), (15, 31076), (Start: 34 @31181 has 3 MA's), (Start: 47 @31241 has 6 MA's), (79, 31376), (81, 31388),

Gene: BillyTP_49 Start: 31109, Stop: 31462, Start Num: 34
Candidate Starts for BillyTP_49:
(6, 30884), (8, 30905), (15, 31004), (Start: 34 @31109 has 3 MA's), (52, 31196), (57, 31208), (62, 31217), (70, 31241), (81, 31319), (91, 31352), (126, 31415),

Gene: BlueShadow_46 Start: 29854, Stop: 30156, Start Num: 47
Candidate Starts for BlueShadow_46:
(24, 29749), (Start: 47 @29854 has 6 MA's), (82, 30001), (103, 30061), (131, 30130),

Gene: Bridgette_58 Start: 36187, Stop: 36480, Start Num: 44
Candidate Starts for Bridgette_58:
(22, 36073), (Start: 44 @36187 has 1 MA's), (Start: 47 @36199 has 6 MA's), (80, 36340), (116, 36412), (124, 36427),

Gene: Constance_62 Start: 40562, Stop: 40960, Start Num: 19
Candidate Starts for Constance_62:
(Start: 19 @40562 has 2 MA's), (80, 40820),

Gene: DillyDally_60 Start: 36655, Stop: 37005, Start Num: 36
Candidate Starts for DillyDally_60:
(9, 36463), (16, 36577), (Start: 36 @36655 has 7 MA's), (45, 36700), (66, 36769), (80, 36856), (98, 36907), (109, 36931), (121, 36955), (123, 36958),

Gene: EvePickles_44 Start: 30359, Stop: 30676, Start Num: 47
Candidate Starts for EvePickles_44:
(Start: 47 @30359 has 6 MA's), (79, 30491), (88, 30527), (89, 30530),

Gene: Faja_46 Start: 30956, Stop: 31330, Start Num: 36
Candidate Starts for Faja_46:
(21, 30887), (23, 30902), (Start: 36 @30956 has 7 MA's), (66, 31082), (77, 31145), (80, 31169),

Gene: Globfish_47 Start: 29845, Stop: 30156, Start Num: 47
Candidate Starts for Globfish_47:
(Start: 47 @29845 has 6 MA's), (80, 29986), (102, 30052), (117, 30085), (130, 30127),

Gene: Gorpy_47 Start: 30846, Stop: 31148, Start Num: 47
Candidate Starts for Gorpy_47:
(Start: 47 @30846 has 6 MA's), (82, 30993), (103, 31053), (130, 31119), (131, 31122),

Gene: Guinevere_48 Start: 32067, Stop: 32372, Start Num: 43
Candidate Starts for Guinevere_48:
(Start: 43 @32067 has 1 MA's), (58, 32136), (113, 32328),

Gene: Hum25_33 Start: 23949, Stop: 23587, Start Num: 32
Candidate Starts for Hum25_33:
(Start: 32 @23949 has 2 MA's), (71, 23814), (81, 23739), (82, 23736), (83, 23727), (100, 23679), (111, 23658), (114, 23655),

Gene: Ichiang_45 Start: 31493, Stop: 31798, Start Num: 43
Candidate Starts for Ichiang_45:
(Start: 43 @31493 has 1 MA's), (58, 31562), (113, 31754),

Gene: Ichiang_51 Start: 35915, Stop: 36196, Start Num: 36
Candidate Starts for Ichiang_51:
(Start: 36 @35915 has 7 MA's), (51, 35963), (55, 35975), (92, 36104), (94, 36107), (110, 36143),

Gene: Isolde_46 Start: 29682, Stop: 30020, Start Num: 34
Candidate Starts for Isolde_46:
(6, 29457), (8, 29478), (15, 29577), (Start: 34 @29682 has 3 MA's), (64, 29769), (77, 29838), (84, 29877), (96, 29907), (116, 29949),

Gene: Kihatsu_55 Start: 37463, Stop: 37744, Start Num: 36
Candidate Starts for Kihatsu_55:
(Start: 36 @37463 has 7 MA's), (51, 37511), (55, 37523), (92, 37652), (110, 37691),

Gene: Kihatsu_48 Start: 33037, Stop: 33342, Start Num: 43
Candidate Starts for Kihatsu_48:
(Start: 43 @33037 has 1 MA's), (58, 33106), (113, 33298),

Gene: Kumotta_44 Start: 28660, Stop: 28989, Start Num: 36
Candidate Starts for Kumotta_44:

(Start: 36 @28660 has 7 MA's), (54, 28732),

Gene: MaterMagnus_47 Start: 29741, Stop: 30043, Start Num: 47

Candidate Starts for MaterMagnus_47:

(Start: 47 @29741 has 6 MA's), (82, 29888), (103, 29948),

Gene: MidnightRain_49 Start: 30942, Stop: 31298, Start Num: 34

Candidate Starts for MidnightRain_49:

(6, 30717), (8, 30738), (15, 30837), (Start: 34 @30942 has 3 MA's), (52, 31029), (57, 31041), (62, 31050), (70, 31074), (80, 31149), (120, 31239),

Gene: Nandita_55 Start: 36477, Stop: 36758, Start Num: 36

Candidate Starts for Nandita_55:

(Start: 36 @36477 has 7 MA's), (51, 36525), (55, 36537), (92, 36666), (110, 36705),

Gene: Nandita_49 Start: 32062, Stop: 32367, Start Num: 43

Candidate Starts for Nandita_49:

(Start: 43 @32062 has 1 MA's), (58, 32131), (113, 32323),

Gene: Phrank15_46 Start: 29454, Stop: 29732, Start Num: 47

Candidate Starts for Phrank15_46:

(14, 29268), (Start: 47 @29454 has 6 MA's), (79, 29586),

Gene: Pucara_58 Start: 39657, Stop: 40034, Start Num: 19

Candidate Starts for Pucara_58:

(3, 39330), (4, 39408), (Start: 19 @39657 has 2 MA's), (55, 39780), (95, 39921), (105, 39948), (112, 39963),

Gene: QuinnAvery_56 Start: 37283, Stop: 37561, Start Num: 36

Candidate Starts for QuinnAvery_56:

(Start: 36 @37283 has 7 MA's), (82, 37430), (127, 37526),

Gene: REQ3_27 Start: 12625, Stop: 12996, Start Num: 30

Candidate Starts for REQ3_27:

(30, 12625), (74, 12799), (75, 12802), (82, 12850), (122, 12940),

Gene: Richie_49 Start: 30530, Stop: 30829, Start Num: 46

Candidate Starts for Richie_49:

(Start: 46 @30530 has 1 MA's), (80, 30671), (81, 30674),

Gene: Richie_66 Start: 35688, Stop: 36038, Start Num: 40

Candidate Starts for Richie_66:

(Start: 40 @35688 has 1 MA's), (50, 35757), (60, 35784), (107, 35952), (111, 35961),

Gene: RootBeer_51 Start: 36505, Stop: 36915, Start Num: 19

Candidate Starts for RootBeer_51:

(12, 36397), (Start: 19 @36505 has 2 MA's), (77, 36739), (82, 36769), (99, 36823), (119, 36862),

Gene: Sakai_46 Start: 29557, Stop: 29859, Start Num: 47

Candidate Starts for Sakai_46:

(Start: 47 @29557 has 6 MA's), (82, 29704), (103, 29764), (130, 29830), (131, 29833),

Gene: Sarge_42 Start: 26531, Stop: 26854, Start Num: 36

Candidate Starts for Sarge_42:

(Start: 36 @26531 has 7 MA's), (42, 26558), (78, 26690), (80, 26705), (96, 26747),

Gene: Sashimi_60 Start: 34705, Stop: 35055, Start Num: 39

Candidate Starts for Sashimi_60:

(33, 34690), (Start: 39 @34705 has 1 MA's), (48, 34768), (75, 34864), (76, 34873),

Gene: Seahorse_49 Start: 31759, Stop: 32121, Start Num: 38

Candidate Starts for Seahorse_49:

(Start: 38 @31759 has 1 MA's), (80, 31954), (81, 31957),

Gene: SpicyFrank_49 Start: 30340, Stop: 30630, Start Num: 47

Candidate Starts for SpicyFrank_49:

(Start: 47 @30340 has 6 MA's),

Gene: ThayneTheZag_47 Start: 29657, Stop: 29974, Start Num: 47

Candidate Starts for ThayneTheZag_47:

(Start: 47 @29657 has 6 MA's), (79, 29789), (89, 29828),

Gene: Vopal_50 Start: 33052, Stop: 33366, Start Num: 36

Candidate Starts for Vopal_50:

(Start: 36 @33052 has 7 MA's), (69, 33142), (80, 33217), (118, 33307),

Gene: Whack_62 Start: 41425, Stop: 41829, Start Num: 32

Candidate Starts for Whack_62:

(5, 41146), (11, 41251), (13, 41287), (20, 41362), (Start: 32 @41425 has 2 MA's), (68, 41575), (72, 41590), (75, 41623), (80, 41665), (104, 41737), (106, 41743),

Gene: YoungHarleezy_47 Start: 30135, Stop: 30518, Start Num: 36

Candidate Starts for YoungHarleezy_47:

(Start: 36 @30135 has 7 MA's), (42, 30162), (56, 30210), (68, 30240), (88, 30354), (89, 30357),

Gene: Zaheer_56 Start: 37545, Stop: 37838, Start Num: 36

Candidate Starts for Zaheer_56:

(1, 36288), (2, 36543), (6, 37329), (7, 37341), (Start: 36 @37545 has 7 MA's), (51, 37593), (55, 37605), (82, 37707), (127, 37803),

Gene: Zucker_52 Start: 33035, Stop: 33385, Start Num: 39

Candidate Starts for Zucker_52:

(17, 32948), (18, 32951), (25, 32984), (33, 33020), (Start: 39 @33035 has 1 MA's), (48, 33098), (87, 33263), (111, 33308), (129, 33350),

Gene: Zucker_36 Start: 27843, Stop: 28172, Start Num: 47

Candidate Starts for Zucker_36:

(27, 27753), (29, 27765), (35, 27780), (41, 27798), (Start: 47 @27843 has 6 MA's), (61, 27891), (73, 27939), (120, 28110),

Gene: Zucker_56 Start: 33964, Stop: 34314, Start Num: 36

Candidate Starts for Zucker_56:

(9, 33772), (16, 33886), (Start: 36 @33964 has 7 MA's), (45, 34009), (66, 34078), (80, 34165), (98, 34216), (109, 34240), (121, 34264), (123, 34267),