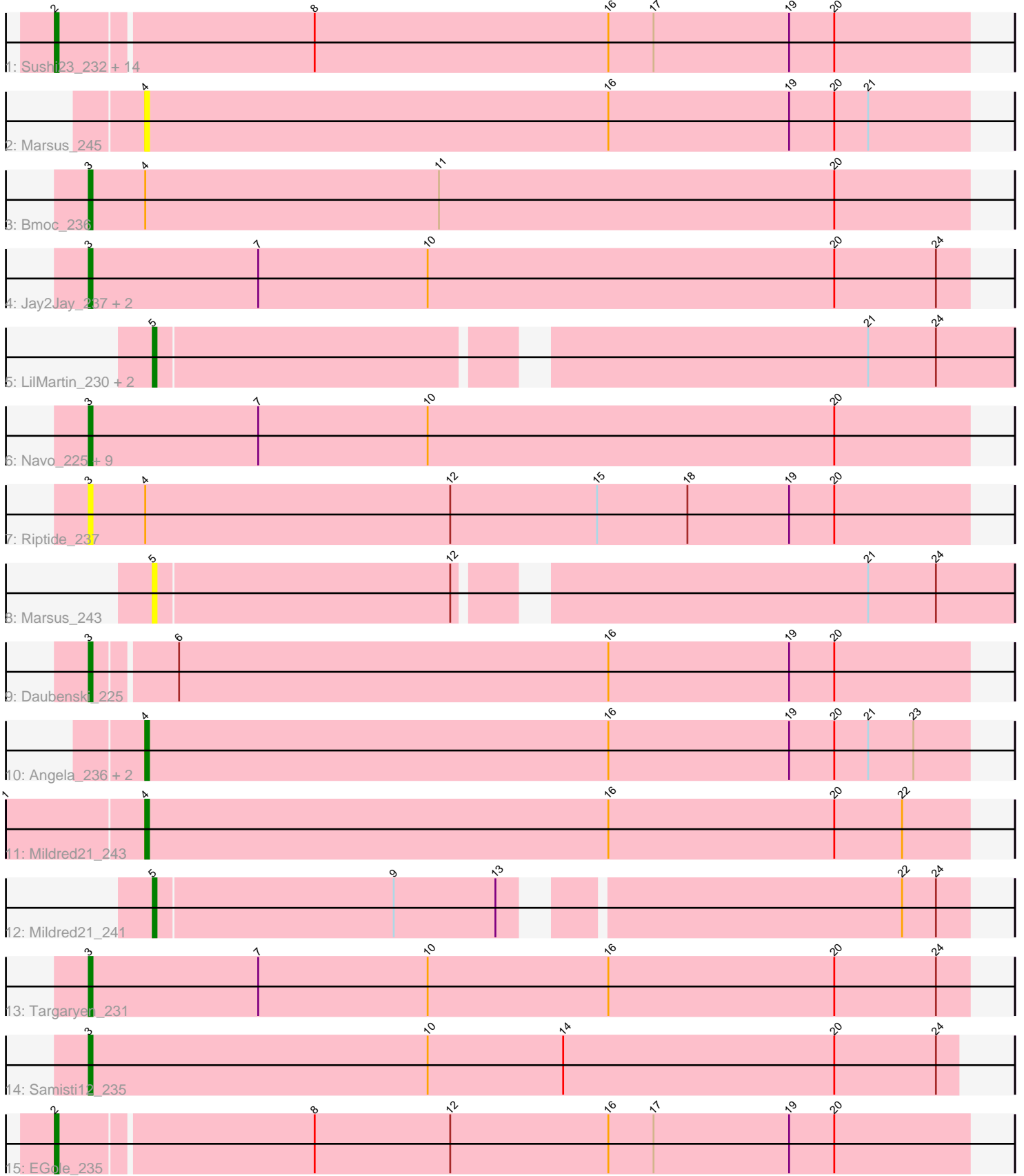


Pham 212732



Note: Tracks are now grouped by subcluster and scaled. Switching in subcluster is indicated by changes in track color. Track scale is now set by default to display the region 30 bp upstream of start 1 to 30 bp downstream of the last possible start. If this default region is judged to be packed too tightly with annotated starts, the track will be further scaled to only show that region of the ORF with annotated starts. This action will be indicated by adding "Zoomed" to the title. For starts, yellow indicates the location of called starts comprised solely of Glimmer/GeneMark auto-annotations, green indicates the location of called starts with at least 1 manual gene annotation.

Pham 212732 Report

This analysis was run 02/22/25 on database version 588.

Pham number 212732 has 44 members, 5 are drafts.

Phages represented in each track:

- Track 1 : Sushi23_232, HangryHippo_229, Lululemon_228, Peebs_228, BlueOtter_229, Tribute_227, Larnav_231, Cursive_234, Watermoore_230, Pepperwood_231, Leo04_231, Teutsch_230, PacManQ_228, Scheme_234, Cross_230
- Track 2 : Marsus_245
- Track 3 : Bmoc_236
- Track 4 : Jay2Jay_237, Warpy_234, Evy_221
- Track 5 : LilMartin_230, Angela_234, MulchMansion_234
- Track 6 : Navo_225, WhereRU_230, Persimmon_234, Braelyn_227, Shuckle_234, Liandry_231, PinkiePie_231, Squillium_234, NootNoot_228, Bartholomune_231
- Track 7 : Riptide_237
- Track 8 : Marsus_243
- Track 9 : Daubenski_225
- Track 10 : Angela_236, LilMartin_232, MulchMansion_236
- Track 11 : Mildred21_243
- Track 12 : Mildred21_241
- Track 13 : Targaryen_231
- Track 14 : Samisti12_235
- Track 15 : EGole_235

Summary of Final Annotations (See graph section above for start numbers):

The start number called the most often in the published annotations is 3, it was called in 16 of the 39 non-draft genes in the pham.

Genes that call this "Most Annotated" start:

- Bartholomune_231, Bmoc_236, Braelyn_227, Daubenski_225, Evy_221, Jay2Jay_237, Liandry_231, Navo_225, NootNoot_228, Persimmon_234, PinkiePie_231, Riptide_237, Samisti12_235, Shuckle_234, Squillium_234, Targaryen_231, Warpy_234, WhereRU_230,

Genes that have the "Most Annotated" start but do not call it:

-

Genes that do not have the "Most Annotated" start:

- Angela_234, Angela_236, BlueOtter_229, Cross_230, Cursive_234, EGole_235, HangryHippo_229, Larnav_231, Leo04_231, LilMartin_230, LilMartin_232, Lululemon_228, Marsus_243, Marsus_245, Mildred21_241, Mildred21_243, MulchMansion_234, MulchMansion_236, PacManQ_228, Peebs_228, Pepperwood_231, Scheme_234, Sushi23_232, Teutsch_230, Tribute_227, Watermoore_230,

Summary by start number:

Start 2:

- Found in 16 of 44 (36.4%) of genes in pham
- Manual Annotations of this start: 15 of 39
- Called 100.0% of time when present
- Phage (with cluster) where this start called: BlueOtter_229 (BE1), Cross_230 (BE1), Cursive_234 (BE1), EGole_235 (BE1), HangryHippo_229 (BE1), Larnav_231 (BE1), Leo04_231 (BE1), Lululemon_228 (BE1), PacManQ_228 (BE1), Peebs_228 (BE1), Pepperwood_231 (BE1), Scheme_234 (BE1), Sushi23_232 (BE1), Teutsch_230 (BE1), Tribute_227 (BE1), Watermoore_230 (BE1),

Start 3:

- Found in 18 of 44 (40.9%) of genes in pham
- Manual Annotations of this start: 16 of 39
- Called 100.0% of time when present
- Phage (with cluster) where this start called: Bartholomune_231 (BE1), Bmoc_236 (BE1), Braelyn_227 (BE1), Daubenski_225 (BE1), Evy_221 (BE1), Jay2Jay_237 (BE1), Liandry_231 (BE1), Navo_225 (BE1), NootNoot_228 (BE1), Persimmon_234 (BE1), PinkiePie_231 (BE1), Riptide_237 (BE1), Samisti12_235 (BE1), Shuckle_234 (BE1), Squillium_234 (BE1), Targaryen_231 (BE1), Warpy_234 (BE1), WhereRU_230 (BE1),

Start 4:

- Found in 7 of 44 (15.9%) of genes in pham
- Manual Annotations of this start: 4 of 39
- Called 71.4% of time when present
- Phage (with cluster) where this start called: Angela_236 (BE1), LilMartin_232 (BE1), Marsus_245 (BE1), Mildred21_243 (BE1), MulchMansion_236 (BE1),

Start 5:

- Found in 5 of 44 (11.4%) of genes in pham
- Manual Annotations of this start: 4 of 39
- Called 100.0% of time when present
- Phage (with cluster) where this start called: Angela_234 (BE1), LilMartin_230 (BE1), Marsus_243 (BE1), Mildred21_241 (BE1), MulchMansion_234 (BE1),

Summary by clusters:

There is one cluster represented in this pham: BE1

Info for manual annotations of cluster BE1:

- Start number 2 was manually annotated 15 times for cluster BE1.
- Start number 3 was manually annotated 16 times for cluster BE1.
- Start number 4 was manually annotated 4 times for cluster BE1.

- Start number 5 was manually annotated 4 times for cluster BE1.

Gene Information:

Gene: Angela_236 Start: 115493, Stop: 115711, Start Num: 4

Candidate Starts for Angela_236:

(Start: 4 @115493 has 4 MA's), (16, 115616), (19, 115664), (20, 115676), (21, 115685), (23, 115697),

Gene: Angela_234 Start: 115083, Stop: 115298, Start Num: 5

Candidate Starts for Angela_234:

(Start: 5 @115083 has 4 MA's), (21, 115260), (24, 115278),

Gene: Bartholomune_231 Start: 114849, Stop: 115082, Start Num: 3

Candidate Starts for Bartholomune_231:

(Start: 3 @114849 has 16 MA's), (7, 114894), (10, 114939), (20, 115047),

Gene: BlueOtter_229 Start: 114987, Stop: 115226, Start Num: 2

Candidate Starts for BlueOtter_229:

(Start: 2 @114987 has 15 MA's), (8, 115053), (16, 115131), (17, 115143), (19, 115179), (20, 115191),

Gene: Bmoc_236 Start: 115531, Stop: 115764, Start Num: 3

Candidate Starts for Bmoc_236:

(Start: 3 @115531 has 16 MA's), (Start: 4 @115546 has 4 MA's), (11, 115624), (20, 115729),

Gene: Braelyn_227 Start: 114496, Stop: 114729, Start Num: 3

Candidate Starts for Braelyn_227:

(Start: 3 @114496 has 16 MA's), (7, 114541), (10, 114586), (20, 114694),

Gene: Cross_230 Start: 115632, Stop: 115871, Start Num: 2

Candidate Starts for Cross_230:

(Start: 2 @115632 has 15 MA's), (8, 115698), (16, 115776), (17, 115788), (19, 115824), (20, 115836),

Gene: Cursive_234 Start: 115739, Stop: 115978, Start Num: 2

Candidate Starts for Cursive_234:

(Start: 2 @115739 has 15 MA's), (8, 115805), (16, 115883), (17, 115895), (19, 115931), (20, 115943),

Gene: Daubenski_225 Start: 116112, Stop: 116342, Start Num: 3

Candidate Starts for Daubenski_225:

(Start: 3 @116112 has 16 MA's), (6, 116133), (16, 116247), (19, 116295), (20, 116307),

Gene: EGole_235 Start: 117823, Stop: 118062, Start Num: 2

Candidate Starts for EGole_235:

(Start: 2 @117823 has 15 MA's), (8, 117889), (12, 117925), (16, 117967), (17, 117979), (19, 118015), (20, 118027),

Gene: Evy_221 Start: 115809, Stop: 116042, Start Num: 3

Candidate Starts for Evy_221:

(Start: 3 @115809 has 16 MA's), (7, 115854), (10, 115899), (20, 116007), (24, 116034),

Gene: HangryHippo_229 Start: 114987, Stop: 115226, Start Num: 2

Candidate Starts for HangryHippo_229:

(Start: 2 @114987 has 15 MA's), (8, 115053), (16, 115131), (17, 115143), (19, 115179), (20, 115191),

Gene: Jay2Jay_237 Start: 115964, Stop: 116197, Start Num: 3

Candidate Starts for Jay2Jay_237:

(Start: 3 @115964 has 16 MA's), (7, 116009), (10, 116054), (20, 116162), (24, 116189),

Gene: Larnav_231 Start: 115905, Stop: 116144, Start Num: 2

Candidate Starts for Larnav_231:

(Start: 2 @115905 has 15 MA's), (8, 115971), (16, 116049), (17, 116061), (19, 116097), (20, 116109),

Gene: Leo04_231 Start: 116013, Stop: 116252, Start Num: 2

Candidate Starts for Leo04_231:

(Start: 2 @116013 has 15 MA's), (8, 116079), (16, 116157), (17, 116169), (19, 116205), (20, 116217),

Gene: Liandry_231 Start: 115385, Stop: 115618, Start Num: 3

Candidate Starts for Liandry_231:

(Start: 3 @115385 has 16 MA's), (7, 115430), (10, 115475), (20, 115583),

Gene: LilMartin_230 Start: 114023, Stop: 114238, Start Num: 5

Candidate Starts for LilMartin_230:

(Start: 5 @114023 has 4 MA's), (21, 114200), (24, 114218),

Gene: LilMartin_232 Start: 114433, Stop: 114651, Start Num: 4

Candidate Starts for LilMartin_232:

(Start: 4 @114433 has 4 MA's), (16, 114556), (19, 114604), (20, 114616), (21, 114625), (23, 114637),

Gene: Lululemon_228 Start: 114792, Stop: 115031, Start Num: 2

Candidate Starts for Lululemon_228:

(Start: 2 @114792 has 15 MA's), (8, 114858), (16, 114936), (17, 114948), (19, 114984), (20, 114996),

Gene: Marsus_245 Start: 116098, Stop: 116316, Start Num: 4

Candidate Starts for Marsus_245:

(Start: 4 @116098 has 4 MA's), (16, 116221), (19, 116269), (20, 116281), (21, 116290),

Gene: Marsus_243 Start: 115688, Stop: 115903, Start Num: 5

Candidate Starts for Marsus_243:

(Start: 5 @115688 has 4 MA's), (12, 115766), (21, 115865), (24, 115883),

Gene: Mildred21_243 Start: 114583, Stop: 114801, Start Num: 4

Candidate Starts for Mildred21_243:

(1, 114547), (Start: 4 @114583 has 4 MA's), (16, 114706), (20, 114766), (22, 114784),

Gene: Mildred21_241 Start: 114172, Stop: 114375, Start Num: 5

Candidate Starts for Mildred21_241:

(Start: 5 @114172 has 4 MA's), (9, 114235), (13, 114262), (22, 114358), (24, 114367),

Gene: MulchMansion_236 Start: 116067, Stop: 116285, Start Num: 4

Candidate Starts for MulchMansion_236:

(Start: 4 @116067 has 4 MA's), (16, 116190), (19, 116238), (20, 116250), (21, 116259), (23, 116271),

Gene: MulchMansion_234 Start: 115657, Stop: 115872, Start Num: 5

Candidate Starts for MulchMansion_234:

(Start: 5 @115657 has 4 MA's), (21, 115834), (24, 115852),

Gene: Navo_225 Start: 113700, Stop: 113933, Start Num: 3
Candidate Starts for Navo_225:
(Start: 3 @113700 has 16 MA's), (7, 113745), (10, 113790), (20, 113898),

Gene: NootNoot_228 Start: 114230, Stop: 114463, Start Num: 3
Candidate Starts for NootNoot_228:
(Start: 3 @114230 has 16 MA's), (7, 114275), (10, 114320), (20, 114428),

Gene: PacManQ_228 Start: 114792, Stop: 115031, Start Num: 2
Candidate Starts for PacManQ_228:
(Start: 2 @114792 has 15 MA's), (8, 114858), (16, 114936), (17, 114948), (19, 114984), (20, 114996),

Gene: Peebs_228 Start: 115876, Stop: 116115, Start Num: 2
Candidate Starts for Peebs_228:
(Start: 2 @115876 has 15 MA's), (8, 115942), (16, 116020), (17, 116032), (19, 116068), (20, 116080),

Gene: Pepperwood_231 Start: 115684, Stop: 115923, Start Num: 2
Candidate Starts for Pepperwood_231:
(Start: 2 @115684 has 15 MA's), (8, 115750), (16, 115828), (17, 115840), (19, 115876), (20, 115888),

Gene: Persimmon_234 Start: 114718, Stop: 114951, Start Num: 3
Candidate Starts for Persimmon_234:
(Start: 3 @114718 has 16 MA's), (7, 114763), (10, 114808), (20, 114916),

Gene: PinkiePie_231 Start: 115385, Stop: 115618, Start Num: 3
Candidate Starts for PinkiePie_231:
(Start: 3 @115385 has 16 MA's), (7, 115430), (10, 115475), (20, 115583),

Gene: Riptide_237 Start: 114393, Stop: 114626, Start Num: 3
Candidate Starts for Riptide_237:
(Start: 3 @114393 has 16 MA's), (Start: 4 @114408 has 4 MA's), (12, 114489), (15, 114528), (18, 114552), (19, 114579), (20, 114591),

Gene: Samisti12_235 Start: 117277, Stop: 117507, Start Num: 3
Candidate Starts for Samisti12_235:
(Start: 3 @117277 has 16 MA's), (10, 117367), (14, 117403), (20, 117475), (24, 117502),

Gene: Scheme_234 Start: 116923, Stop: 117162, Start Num: 2
Candidate Starts for Scheme_234:
(Start: 2 @116923 has 15 MA's), (8, 116989), (16, 117067), (17, 117079), (19, 117115), (20, 117127),

Gene: Shuckle_234 Start: 116236, Stop: 116469, Start Num: 3
Candidate Starts for Shuckle_234:
(Start: 3 @116236 has 16 MA's), (7, 116281), (10, 116326), (20, 116434),

Gene: Squillium_234 Start: 115387, Stop: 115620, Start Num: 3
Candidate Starts for Squillium_234:
(Start: 3 @115387 has 16 MA's), (7, 115432), (10, 115477), (20, 115585),

Gene: Sushi23_232 Start: 116742, Stop: 116981, Start Num: 2
Candidate Starts for Sushi23_232:
(Start: 2 @116742 has 15 MA's), (8, 116808), (16, 116886), (17, 116898), (19, 116934), (20, 116946),

Gene: Targaryen_231 Start: 116917, Stop: 117150, Start Num: 3

Candidate Starts for Targaryen_231:

(Start: 3 @116917 has 16 MA's), (7, 116962), (10, 117007), (16, 117055), (20, 117115), (24, 117142),

Gene: Teutsch_230 Start: 116107, Stop: 116346, Start Num: 2

Candidate Starts for Teutsch_230:

(Start: 2 @116107 has 15 MA's), (8, 116173), (16, 116251), (17, 116263), (19, 116299), (20, 116311),

Gene: Tribute_227 Start: 116272, Stop: 116511, Start Num: 2

Candidate Starts for Tribute_227:

(Start: 2 @116272 has 15 MA's), (8, 116338), (16, 116416), (17, 116428), (19, 116464), (20, 116476),

Gene: Warpy_234 Start: 115402, Stop: 115635, Start Num: 3

Candidate Starts for Warpy_234:

(Start: 3 @115402 has 16 MA's), (7, 115447), (10, 115492), (20, 115600), (24, 115627),

Gene: Watermoore_230 Start: 116630, Stop: 116869, Start Num: 2

Candidate Starts for Watermoore_230:

(Start: 2 @116630 has 15 MA's), (8, 116696), (16, 116774), (17, 116786), (19, 116822), (20, 116834),

Gene: WhereRU_230 Start: 114879, Stop: 115112, Start Num: 3

Candidate Starts for WhereRU_230:

(Start: 3 @114879 has 16 MA's), (7, 114924), (10, 114969), (20, 115077),