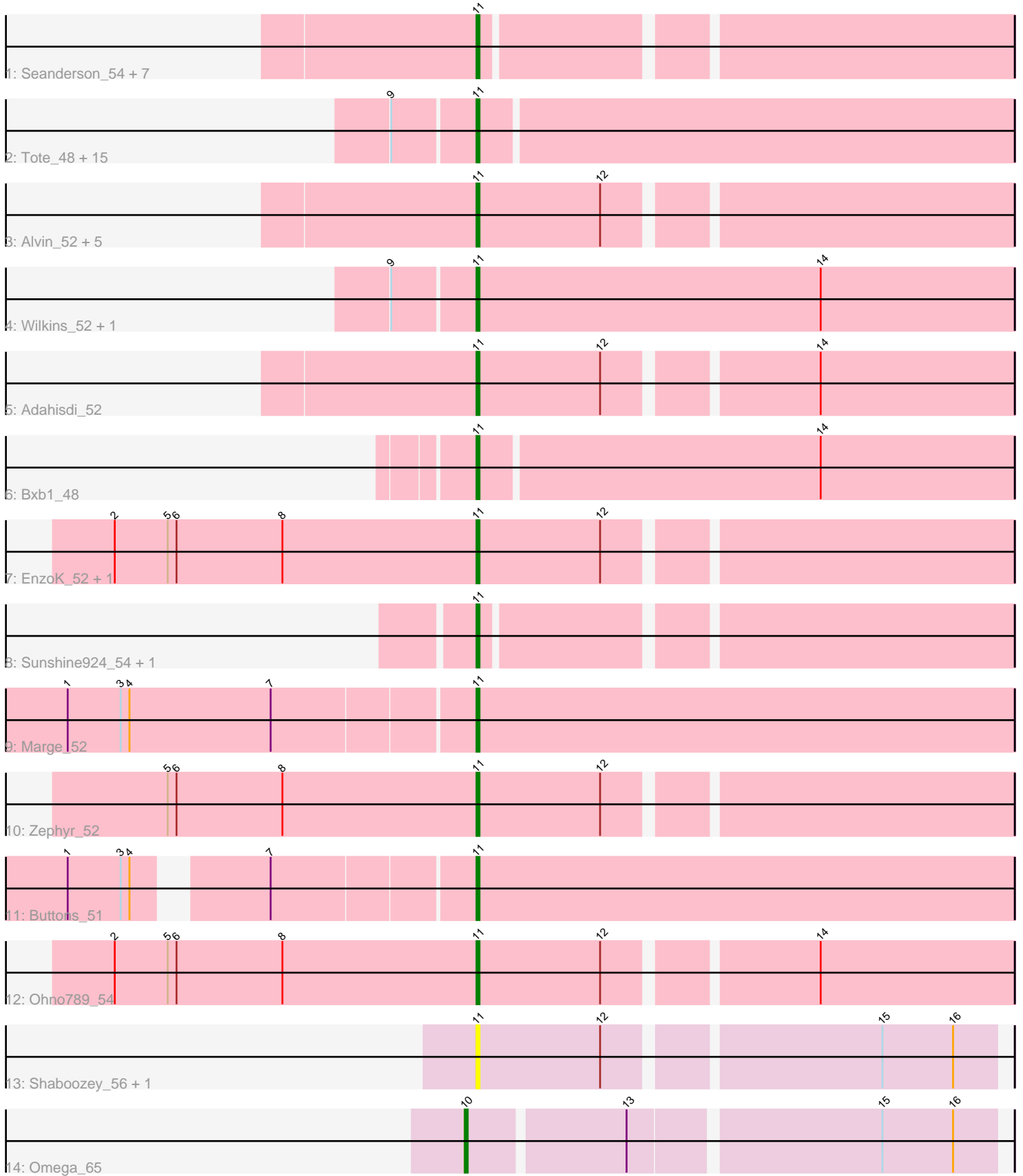


Pham 212751



Note: Tracks are now grouped by subcluster and scaled. Switching in subcluster is indicated by changes in track color. Track scale is now set by default to display the region 30 bp upstream of start 1 to 30 bp downstream of the last possible start. If this default region is judged to be packed too tightly with annotated starts, the track will be further scaled to only show that region of the ORF with annotated starts. This action will be indicated by adding "Zoomed" to the title. For starts, yellow indicates the location of called starts comprised solely of Glimmer/GeneMark auto-annotations, green indicates the location of called starts with at least 1 manual gene annotation.

Pham 212751 Report

This analysis was run 02/22/25 on database version 588.

Pham number 212751 has 45 members, 3 are drafts.

Phages represented in each track:

- Track 1 : Seanderson_54, Bruns_51, Scowl_53, Dreamboat_54, PherrisBueller_52, Jasper_54, Barriga_53, Acme_54
- Track 2 : Tote_48, BeesKnees_55, Dynamix_54, DreamCatcher_56, Killigrew_53, Seabiscuit_55, Pari_54, Corvo_53, Smeagol_54, Moose_52, SwissCheese_54, Swole_53, Papez_55, JuliaChild_53, Forsytheast_52, McGuire_54
- Track 3 : Alvin_52, Big3_52, MrGordo_52, DrFeelGood_50, Trouble_55, Zeeculate_50
- Track 4 : Wilkins_52, Topgun_52
- Track 5 : Adahisdi_52
- Track 6 : Bxb1_48
- Track 7 : EnzoK_52, Dulcie_53
- Track 8 : Sunshine924_54, Alsfro_56
- Track 9 : Marge_52
- Track 10 : Zephyr_52
- Track 11 : Buttons_51
- Track 12 : Ohno789_54
- Track 13 : Shaboozey_56, Gonephishing_63
- Track 14 : Omega_65

Summary of Final Annotations (See graph section above for start numbers):

The start number called the most often in the published annotations is 11, it was called in 41 of the 42 non-draft genes in the pham.

Genes that call this "Most Annotated" start:

- Acme_54, Adahisdi_52, Alsfro_56, Alvin_52, Barriga_53, BeesKnees_55, Big3_52, Bruns_51, Buttons_51, Bxb1_48, Corvo_53, DrFeelGood_50, DreamCatcher_56, Dreamboat_54, Dulcie_53, Dynamix_54, EnzoK_52, Forsytheast_52, Gonephishing_63, Jasper_54, JuliaChild_53, Killigrew_53, Marge_52, McGuire_54, Moose_52, MrGordo_52, Ohno789_54, Papez_55, Pari_54, PherrisBueller_52, Scowl_53, Seabiscuit_55, Seanderson_54, Shaboozey_56, Smeagol_54, Sunshine924_54, SwissCheese_54, Swole_53, Topgun_52, Tote_48, Trouble_55, Wilkins_52, Zeeculate_50, Zephyr_52,

Genes that have the "Most Annotated" start but do not call it:

-

Genes that do not have the "Most Annotated" start:

- Omega_65,

Summary by start number:

Start 10:

- Found in 1 of 45 (2.2%) of genes in pham
- Manual Annotations of this start: 1 of 42
- Called 100.0% of time when present
- Phage (with cluster) where this start called: Omega_65 (J),

Start 11:

- Found in 44 of 45 (97.8%) of genes in pham
- Manual Annotations of this start: 41 of 42
- Called 100.0% of time when present
- Phage (with cluster) where this start called: Acme_54 (A1), Adahisdi_52 (A1), Alsfro_56 (A1), Alvin_52 (A1), Barriga_53 (A1), BeesKnees_55 (A1), Big3_52 (A1), Bruns_51 (A1), Buttons_51 (A1), Bxb1_48 (A1), Corvo_53 (A1), DrFeelGood_50 (A1), DreamCatcher_56 (A1), Dreamboat_54 (A1), Dulcie_53 (A1), Dynamix_54 (A1), EnzoK_52 (A1), Forsytheast_52 (A1), Gonephishing_63 (J), Jasper_54 (A1), JuliaChild_53 (A1), Killigrew_53 (A1), Marge_52 (A1), McGuire_54 (A1), Moose_52 (A1), MrGordo_52 (A1), Ohno789_54 (A1), Papez_55 (A1), Pari_54 (A1), PherrisBueller_52 (A1), Scowl_53 (A1), Seabiscuit_55 (A1), Seanderson_54 (A1), Shaboozey_56 (J), Smeagol_54 (A1), Sunshine924_54 (A1), SwissCheese_54 (A1), Swole_53 (A1), Topgun_52 (A1), Tote_48 (A1), Trouble_55 (A1), Wilkins_52 (A1), Zeeculate_50 (A1), Zephyr_52 (A1),

Summary by clusters:

There are 2 clusters represented in this pham: A1, J,

Info for manual annotations of cluster A1:

- Start number 11 was manually annotated 41 times for cluster A1.

Info for manual annotations of cluster J:

- Start number 10 was manually annotated 1 time for cluster J.

Gene Information:

Gene: Acme_54 Start: 37720, Stop: 37550, Start Num: 11

Candidate Starts for Acme_54:

(Start: 11 @37720 has 41 MA's),

Gene: Adahisdi_52 Start: 38524, Stop: 38351, Start Num: 11

Candidate Starts for Adahisdi_52:

(Start: 11 @38524 has 41 MA's), (12, 38482), (14, 38416),

Gene: Alsfro_56 Start: 37894, Stop: 37724, Start Num: 11

Candidate Starts for Alsfro_56:
(Start: 11 @37894 has 41 MA's),

Gene: Alvin_52 Start: 38173, Stop: 38000, Start Num: 11
Candidate Starts for Alvin_52:
(Start: 11 @38173 has 41 MA's), (12, 38131),

Gene: Barriga_53 Start: 37279, Stop: 37109, Start Num: 11
Candidate Starts for Barriga_53:
(Start: 11 @37279 has 41 MA's),

Gene: BeesKnees_55 Start: 38051, Stop: 37881, Start Num: 11
Candidate Starts for BeesKnees_55:
(9, 38078), (Start: 11 @38051 has 41 MA's),

Gene: Big3_52 Start: 38865, Stop: 38692, Start Num: 11
Candidate Starts for Big3_52:
(Start: 11 @38865 has 41 MA's), (12, 38823),

Gene: Bruns_51 Start: 37204, Stop: 37034, Start Num: 11
Candidate Starts for Bruns_51:
(Start: 11 @37204 has 41 MA's),

Gene: Buttons_51 Start: 36152, Stop: 35970, Start Num: 11
Candidate Starts for Buttons_51:
(1, 36275), (3, 36257), (4, 36254), (7, 36218), (Start: 11 @36152 has 41 MA's),

Gene: Bxb1_48 Start: 36963, Stop: 36784, Start Num: 11
Candidate Starts for Bxb1_48:
(Start: 11 @36963 has 41 MA's), (14, 36849),

Gene: Corvo_53 Start: 39106, Stop: 38936, Start Num: 11
Candidate Starts for Corvo_53:
(9, 39133), (Start: 11 @39106 has 41 MA's),

Gene: DrFeelGood_50 Start: 37621, Stop: 37448, Start Num: 11
Candidate Starts for DrFeelGood_50:
(Start: 11 @37621 has 41 MA's), (12, 37579),

Gene: DreamCatcher_56 Start: 39029, Stop: 38859, Start Num: 11
Candidate Starts for DreamCatcher_56:
(9, 39056), (Start: 11 @39029 has 41 MA's),

Gene: Dreamboat_54 Start: 37374, Stop: 37204, Start Num: 11
Candidate Starts for Dreamboat_54:
(Start: 11 @37374 has 41 MA's),

Gene: Dulcie_53 Start: 37830, Stop: 37657, Start Num: 11
Candidate Starts for Dulcie_53:
(2, 37953), (5, 37935), (6, 37932), (8, 37896), (Start: 11 @37830 has 41 MA's), (12, 37788),

Gene: Dynamix_54 Start: 37849, Stop: 37679, Start Num: 11
Candidate Starts for Dynamix_54:

(9, 37876), (Start: 11 @37849 has 41 MA's),

Gene: EnzoK_52 Start: 35427, Stop: 35254, Start Num: 11

Candidate Starts for EnzoK_52:

(2, 35550), (5, 35532), (6, 35529), (8, 35493), (Start: 11 @35427 has 41 MA's), (12, 35385),

Gene: Forsytheast_52 Start: 37422, Stop: 37252, Start Num: 11

Candidate Starts for Forsytheast_52:

(9, 37449), (Start: 11 @37422 has 41 MA's),

Gene: Gonephishing_63 Start: 44987, Stop: 44820, Start Num: 11

Candidate Starts for Gonephishing_63:

(Start: 11 @44987 has 41 MA's), (12, 44945), (15, 44858), (16, 44834),

Gene: Jasper_54 Start: 37260, Stop: 37090, Start Num: 11

Candidate Starts for Jasper_54:

(Start: 11 @37260 has 41 MA's),

Gene: JuliaChild_53 Start: 37630, Stop: 37451, Start Num: 11

Candidate Starts for JuliaChild_53:

(9, 37657), (Start: 11 @37630 has 41 MA's),

Gene: Killigrew_53 Start: 38829, Stop: 38659, Start Num: 11

Candidate Starts for Killigrew_53:

(9, 38856), (Start: 11 @38829 has 41 MA's),

Gene: Marge_52 Start: 38082, Stop: 37900, Start Num: 11

Candidate Starts for Marge_52:

(1, 38217), (3, 38199), (4, 38196), (7, 38148), (Start: 11 @38082 has 41 MA's),

Gene: McGuire_54 Start: 37727, Stop: 37548, Start Num: 11

Candidate Starts for McGuire_54:

(9, 37754), (Start: 11 @37727 has 41 MA's),

Gene: Moose_52 Start: 37422, Stop: 37252, Start Num: 11

Candidate Starts for Moose_52:

(9, 37449), (Start: 11 @37422 has 41 MA's),

Gene: MrGordo_52 Start: 38105, Stop: 37932, Start Num: 11

Candidate Starts for MrGordo_52:

(Start: 11 @38105 has 41 MA's), (12, 38063),

Gene: Ohno789_54 Start: 38616, Stop: 38443, Start Num: 11

Candidate Starts for Ohno789_54:

(2, 38739), (5, 38721), (6, 38718), (8, 38682), (Start: 11 @38616 has 41 MA's), (12, 38574), (14, 38508),

Gene: Omega_65 Start: 47992, Stop: 47822, Start Num: 10

Candidate Starts for Omega_65:

(Start: 10 @47992 has 1 MA's), (13, 47941), (15, 47860), (16, 47836),

Gene: Papez_55 Start: 40025, Stop: 39855, Start Num: 11

Candidate Starts for Papez_55:

(9, 40052), (Start: 11 @40025 has 41 MA's),

Gene: Pari_54 Start: 37560, Stop: 37390, Start Num: 11

Candidate Starts for Pari_54:

(9, 37587), (Start: 11 @37560 has 41 MA's),

Gene: PherrisBueller_52 Start: 36893, Stop: 36723, Start Num: 11

Candidate Starts for PherrisBueller_52:

(Start: 11 @36893 has 41 MA's),

Gene: Scowl_53 Start: 38197, Stop: 38027, Start Num: 11

Candidate Starts for Scowl_53:

(Start: 11 @38197 has 41 MA's),

Gene: Seabiscuit_55 Start: 37814, Stop: 37635, Start Num: 11

Candidate Starts for Seabiscuit_55:

(9, 37841), (Start: 11 @37814 has 41 MA's),

Gene: Seanderson_54 Start: 39574, Stop: 39404, Start Num: 11

Candidate Starts for Seanderson_54:

(Start: 11 @39574 has 41 MA's),

Gene: Shaboozey_56 Start: 41971, Stop: 41804, Start Num: 11

Candidate Starts for Shaboozey_56:

(Start: 11 @41971 has 41 MA's), (12, 41929), (15, 41842), (16, 41818),

Gene: Smeagol_54 Start: 39158, Stop: 38988, Start Num: 11

Candidate Starts for Smeagol_54:

(9, 39185), (Start: 11 @39158 has 41 MA's),

Gene: Sunshine924_54 Start: 37412, Stop: 37242, Start Num: 11

Candidate Starts for Sunshine924_54:

(Start: 11 @37412 has 41 MA's),

Gene: SwissCheese_54 Start: 37922, Stop: 37752, Start Num: 11

Candidate Starts for SwissCheese_54:

(9, 37949), (Start: 11 @37922 has 41 MA's),

Gene: Swole_53 Start: 37105, Stop: 36926, Start Num: 11

Candidate Starts for Swole_53:

(9, 37132), (Start: 11 @37105 has 41 MA's),

Gene: Topgun_52 Start: 37492, Stop: 37310, Start Num: 11

Candidate Starts for Topgun_52:

(9, 37519), (Start: 11 @37492 has 41 MA's), (14, 37375),

Gene: Tote_48 Start: 34372, Stop: 34193, Start Num: 11

Candidate Starts for Tote_48:

(9, 34399), (Start: 11 @34372 has 41 MA's),

Gene: Trouble_55 Start: 39314, Stop: 39141, Start Num: 11

Candidate Starts for Trouble_55:

(Start: 11 @39314 has 41 MA's), (12, 39272),

Gene: Wilkins_52 Start: 37422, Stop: 37240, Start Num: 11

Candidate Starts for Wilkins_52:

(9, 37449), (Start: 11 @37422 has 41 MA's), (14, 37305),

Gene: Zeeculate_50 Start: 38630, Stop: 38457, Start Num: 11

Candidate Starts for Zeeculate_50:

(Start: 11 @38630 has 41 MA's), (12, 38588),

Gene: Zephyr_52 Start: 37519, Stop: 37346, Start Num: 11

Candidate Starts for Zephyr_52:

(5, 37624), (6, 37621), (8, 37585), (Start: 11 @37519 has 41 MA's), (12, 37477),