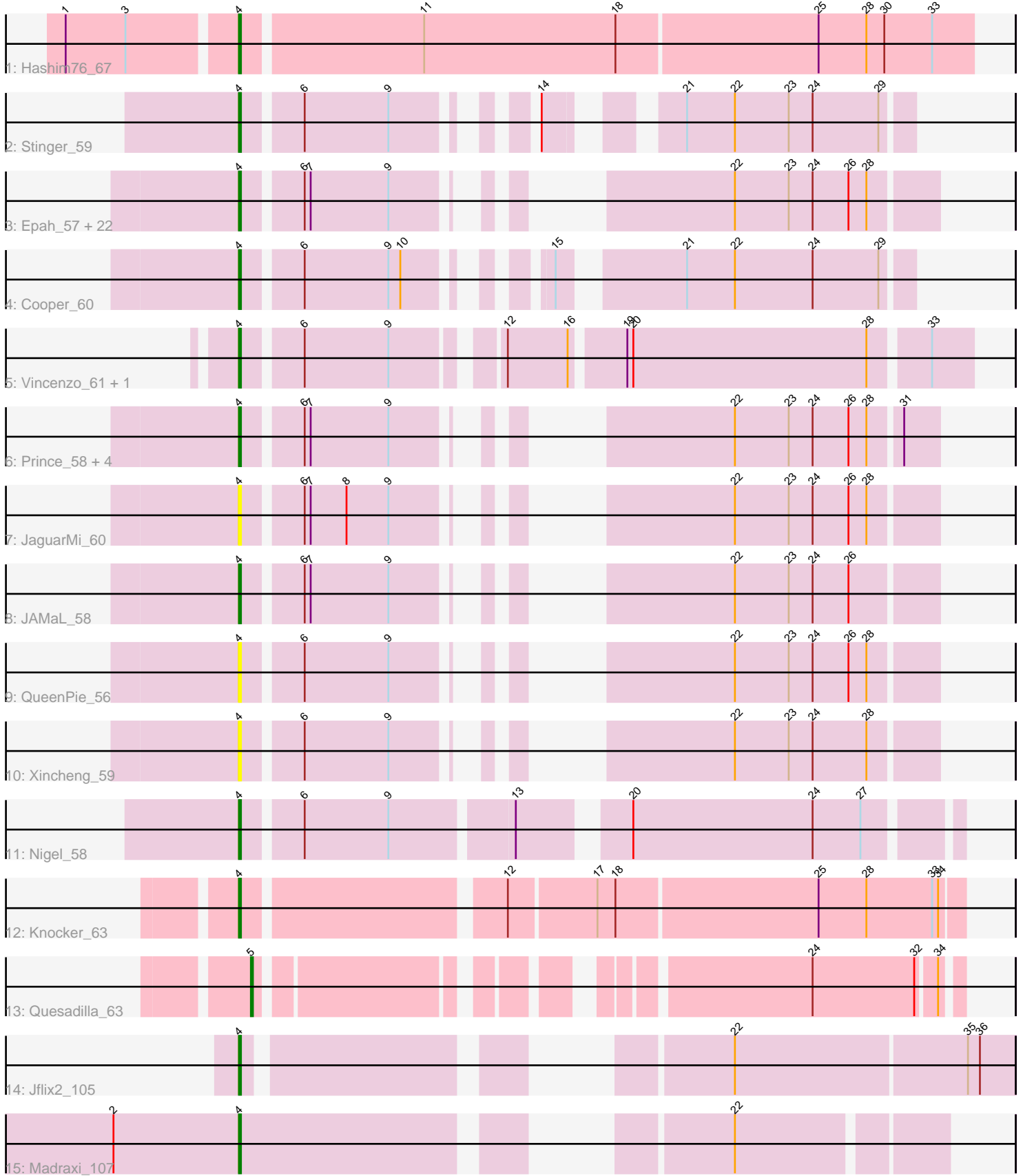


Pham 212759



Note: Tracks are now grouped by subcluster and scaled. Switching in subcluster is indicated by changes in track color. Track scale is now set by default to display the region 30 bp upstream of start 1 to 30 bp downstream of the last possible start. If this default region is judged to be packed too tightly with annotated starts, the track will be further scaled to only show that region of the ORF with annotated starts. This action will be indicated by adding "Zoomed" to the title. For starts, yellow indicates the location of called starts comprised solely of Glimmer/GeneMark auto-annotations, green indicates the location of called starts with at least 1 manual gene annotation.

Pham 212759 Report

This analysis was run 02/22/25 on database version 588.

Pham number 212759 has 42 members, 12 are drafts.

Phages represented in each track:

- Track 1 : Hashim76_67
- Track 2 : Stinger_59
- Track 3 : Epah_57, Fortunato_59, BobbyK_59, Hally898_57, BrownCNA_60, ChrisnMich_58, Fanaw_57, Mithril_58, Antihero_57, Hangman_58, Waleliano_58, GinPorsche_57, VioletZ_60, Magpie_57, Poster_57, Ahwei_57, Heath_57, Frederick_59, Lolalove_59, Nanao_57, Lambano_57, Zemanar_59, RawrgerThat_59
- Track 4 : Cooper_60
- Track 5 : Vincenzo_61, AlanGrant_62
- Track 6 : Prince_58, Apex_59, Austelle_59, Mudslide_58, Hydro_58
- Track 7 : JaguarMi_60
- Track 8 : JAMaL_58
- Track 9 : QueenPie_56
- Track 10 : Xincheng_59
- Track 11 : Nigel_58
- Track 12 : Knocker_63
- Track 13 : Quesadilla_63
- Track 14 : Jflix2_105
- Track 15 : Madraxi_107

Summary of Final Annotations (See graph section above for start numbers):

The start number called the most often in the published annotations is 4, it was called in 29 of the 30 non-draft genes in the pham.

Genes that call this "Most Annotated" start:

- Ahwei_57, AlanGrant_62, Antihero_57, Apex_59, Austelle_59, BobbyK_59, BrownCNA_60, ChrisnMich_58, Cooper_60, Epah_57, Fanaw_57, Fortunato_59, Frederick_59, GinPorsche_57, Hally898_57, Hangman_58, Hashim76_67, Heath_57, Hydro_58, JAMaL_58, JaguarMi_60, Jflix2_105, Knocker_63, Lambano_57, Lolalove_59, Madraxi_107, Magpie_57, Mithril_58, Mudslide_58, Nanao_57, Nigel_58, Poster_57, Prince_58, QueenPie_56, RawrgerThat_59, Stinger_59, Vincenzo_61, VioletZ_60, Waleliano_58, Xincheng_59, Zemanar_59,

Genes that have the "Most Annotated" start but do not call it:

-

Genes that do not have the "Most Annotated" start:

- Quesadilla_63,

Summary by start number:

Start 4:

- Found in 41 of 42 (97.6%) of genes in pham
- Manual Annotations of this start: 29 of 30
- Called 100.0% of time when present
- Phage (with cluster) where this start called: Ahwei_57 (B4), AlanGrant_62 (B4), Antihero_57 (B4), Apex_59 (B4), Austelle_59 (B4), BobbyK_59 (B4), BrownCNA_60 (B4), ChrisnMich_58 (B4), Cooper_60 (B4), Epah_57 (B4), Fanaw_57 (B4), Fortunato_59 (B4), Frederick_59 (B4), GinPorsche_57 (B4), Hally898_57 (B4), Hangman_58 (B4), Hashim76_67 (B13), Heath_57 (B4), Hydro_58 (B4), JAMaL_58 (B4), JaguarMi_60 (B4), Jflix2_105 (CF), Knocker_63 (B9), Lambano_57 (B4), Lolalove_59 (B4), Madraxi_107 (CF), Magpie_57 (B4), Mithril_58 (B4), Mudslide_58 (B4), Nanao_57 (B4), Nigel_58 (B4), Poster_57 (B4), Prince_58 (B4), QueenPie_56 (B4), RawrgerThat_59 (B4), Stinger_59 (B4), Vincenzo_61 (B4), VioletZ_60 (B4), Waleliano_58 (B4), Xincheng_59 (B4), Zemanar_59 (B4),

Start 5:

- Found in 1 of 42 (2.4%) of genes in pham
- Manual Annotations of this start: 1 of 30
- Called 100.0% of time when present
- Phage (with cluster) where this start called: Quesadilla_63 (B9),

Summary by clusters:

There are 4 clusters represented in this pham: B4, B13, CF, B9,

Info for manual annotations of cluster B13:

- Start number 4 was manually annotated 1 time for cluster B13.

Info for manual annotations of cluster B4:

- Start number 4 was manually annotated 25 times for cluster B4.

Info for manual annotations of cluster B9:

- Start number 4 was manually annotated 1 time for cluster B9.
- Start number 5 was manually annotated 1 time for cluster B9.

Info for manual annotations of cluster CF:

- Start number 4 was manually annotated 2 times for cluster CF.

Gene Information:

Gene: Ahwei_57 Start: 55326, Stop: 55054, Start Num: 4

Candidate Starts for Ahwei_57:

(Start: 4 @55326 has 29 MA's), (6, 55299), (7, 55296), (9, 55257), (22, 55152), (23, 55125), (24, 55113), (26, 55095), (28, 55086),

Gene: AlanGrant_62 Start: 57505, Stop: 57170, Start Num: 4

Candidate Starts for AlanGrant_62:

(Start: 4 @57505 has 29 MA's), (6, 57478), (9, 57436), (12, 57391), (16, 57361), (19, 57337), (20, 57334), (28, 57217), (33, 57190),

Gene: Antihero_57 Start: 55324, Stop: 55052, Start Num: 4

Candidate Starts for Antihero_57:

(Start: 4 @55324 has 29 MA's), (6, 55297), (7, 55294), (9, 55255), (22, 55150), (23, 55123), (24, 55111), (26, 55093), (28, 55084),

Gene: Apex_59 Start: 56547, Stop: 56275, Start Num: 4

Candidate Starts for Apex_59:

(Start: 4 @56547 has 29 MA's), (6, 56520), (7, 56517), (9, 56478), (22, 56373), (23, 56346), (24, 56334), (26, 56316), (28, 56307), (31, 56292),

Gene: Austelle_59 Start: 57003, Stop: 56731, Start Num: 4

Candidate Starts for Austelle_59:

(Start: 4 @57003 has 29 MA's), (6, 56976), (7, 56973), (9, 56934), (22, 56829), (23, 56802), (24, 56790), (26, 56772), (28, 56763), (31, 56748),

Gene: BobbyK_59 Start: 56313, Stop: 56041, Start Num: 4

Candidate Starts for BobbyK_59:

(Start: 4 @56313 has 29 MA's), (6, 56286), (7, 56283), (9, 56244), (22, 56139), (23, 56112), (24, 56100), (26, 56082), (28, 56073),

Gene: BrownCNA_60 Start: 56670, Stop: 56398, Start Num: 4

Candidate Starts for BrownCNA_60:

(Start: 4 @56670 has 29 MA's), (6, 56643), (7, 56640), (9, 56601), (22, 56496), (23, 56469), (24, 56457), (26, 56439), (28, 56430),

Gene: ChrisnMich_58 Start: 55338, Stop: 55066, Start Num: 4

Candidate Starts for ChrisnMich_58:

(Start: 4 @55338 has 29 MA's), (6, 55311), (7, 55308), (9, 55269), (22, 55164), (23, 55137), (24, 55125), (26, 55107), (28, 55098),

Gene: Cooper_60 Start: 55804, Stop: 55523, Start Num: 4

Candidate Starts for Cooper_60:

(Start: 4 @55804 has 29 MA's), (6, 55777), (9, 55735), (10, 55729), (15, 55684), (21, 55633), (22, 55609), (24, 55570), (29, 55537),

Gene: Epah_57 Start: 55324, Stop: 55052, Start Num: 4

Candidate Starts for Epah_57:

(Start: 4 @55324 has 29 MA's), (6, 55297), (7, 55294), (9, 55255), (22, 55150), (23, 55123), (24, 55111), (26, 55093), (28, 55084),

Gene: Fanaw_57 Start: 56225, Stop: 55953, Start Num: 4

Candidate Starts for Fanaw_57:

(Start: 4 @56225 has 29 MA's), (6, 56198), (7, 56195), (9, 56156), (22, 56051), (23, 56024), (24, 56012), (26, 55994), (28, 55985),

Gene: Fortunato_59 Start: 56365, Stop: 56093, Start Num: 4

Candidate Starts for Fortunato_59:

(Start: 4 @56365 has 29 MA's), (6, 56338), (7, 56335), (9, 56296), (22, 56191), (23, 56164), (24, 56152), (26, 56134), (28, 56125),

Gene: Frederick_59 Start: 56256, Stop: 55984, Start Num: 4

Candidate Starts for Frederick_59:

(Start: 4 @56256 has 29 MA's), (6, 56229), (7, 56226), (9, 56187), (22, 56082), (23, 56055), (24, 56043), (26, 56025), (28, 56016),

Gene: GinPorsche_57 Start: 55324, Stop: 55052, Start Num: 4

Candidate Starts for GinPorsche_57:

(Start: 4 @55324 has 29 MA's), (6, 55297), (7, 55294), (9, 55255), (22, 55150), (23, 55123), (24, 55111), (26, 55093), (28, 55084),

Gene: Hally898_57 Start: 55339, Stop: 55067, Start Num: 4

Candidate Starts for Hally898_57:

(Start: 4 @55339 has 29 MA's), (6, 55312), (7, 55309), (9, 55270), (22, 55165), (23, 55138), (24, 55126), (26, 55108), (28, 55099),

Gene: Hangman_58 Start: 56413, Stop: 56141, Start Num: 4

Candidate Starts for Hangman_58:

(Start: 4 @56413 has 29 MA's), (6, 56386), (7, 56383), (9, 56344), (22, 56239), (23, 56212), (24, 56200), (26, 56182), (28, 56173),

Gene: Hashim76_67 Start: 56917, Stop: 56558, Start Num: 4

Candidate Starts for Hashim76_67:

(1, 56998), (3, 56968), (Start: 4 @56917 has 29 MA's), (11, 56830), (18, 56734), (25, 56635), (28, 56611), (30, 56602), (33, 56578),

Gene: Heath_57 Start: 56039, Stop: 55767, Start Num: 4

Candidate Starts for Heath_57:

(Start: 4 @56039 has 29 MA's), (6, 56012), (7, 56009), (9, 55970), (22, 55865), (23, 55838), (24, 55826), (26, 55808), (28, 55799),

Gene: Hydro_58 Start: 56390, Stop: 56118, Start Num: 4

Candidate Starts for Hydro_58:

(Start: 4 @56390 has 29 MA's), (6, 56363), (7, 56360), (9, 56321), (22, 56216), (23, 56189), (24, 56177), (26, 56159), (28, 56150), (31, 56135),

Gene: JAMaL_58 Start: 56431, Stop: 56159, Start Num: 4

Candidate Starts for JAMaL_58:

(Start: 4 @56431 has 29 MA's), (6, 56404), (7, 56401), (9, 56362), (22, 56257), (23, 56230), (24, 56218), (26, 56200),

Gene: JaguarMi_60 Start: 57457, Stop: 57185, Start Num: 4

Candidate Starts for JaguarMi_60:

(Start: 4 @57457 has 29 MA's), (6, 57430), (7, 57427), (8, 57409), (9, 57388), (22, 57283), (23, 57256), (24, 57244), (26, 57226), (28, 57217),

Gene: Jflix2_105 Start: 60673, Stop: 60356, Start Num: 4

Candidate Starts for Jflix2_105:

(Start: 4 @60673 has 29 MA's), (22, 60493), (35, 60379), (36, 60373),

Gene: Knocker_63 Start: 57737, Stop: 57396, Start Num: 4

Candidate Starts for Knocker_63:

(Start: 4 @57737 has 29 MA's), (12, 57617), (17, 57575), (18, 57566), (25, 57467), (28, 57443), (33, 57410), (34, 57407),

Gene: Lambano_57 Start: 55339, Stop: 55067, Start Num: 4

Candidate Starts for Lambano_57:

(Start: 4 @55339 has 29 MA's), (6, 55312), (7, 55309), (9, 55270), (22, 55165), (23, 55138), (24, 55126), (26, 55108), (28, 55099),

Gene: Lolalove_59 Start: 56370, Stop: 56098, Start Num: 4

Candidate Starts for Lolalove_59:

(Start: 4 @56370 has 29 MA's), (6, 56343), (7, 56340), (9, 56301), (22, 56196), (23, 56169), (24, 56157), (26, 56139), (28, 56130),

Gene: Madraxi_107 Start: 62702, Stop: 62415, Start Num: 4

Candidate Starts for Madraxi_107:

(2, 62765), (Start: 4 @62702 has 29 MA's), (22, 62513),

Gene: Magpie_57 Start: 56295, Stop: 56023, Start Num: 4

Candidate Starts for Magpie_57:

(Start: 4 @56295 has 29 MA's), (6, 56268), (7, 56265), (9, 56226), (22, 56121), (23, 56094), (24, 56082), (26, 56064), (28, 56055),

Gene: Mithril_58 Start: 56502, Stop: 56230, Start Num: 4

Candidate Starts for Mithril_58:

(Start: 4 @56502 has 29 MA's), (6, 56475), (7, 56472), (9, 56433), (22, 56328), (23, 56301), (24, 56289), (26, 56271), (28, 56262),

Gene: Mudslide_58 Start: 56635, Stop: 56363, Start Num: 4

Candidate Starts for Mudslide_58:

(Start: 4 @56635 has 29 MA's), (6, 56608), (7, 56605), (9, 56566), (22, 56461), (23, 56434), (24, 56422), (26, 56404), (28, 56395), (31, 56380),

Gene: Nanao_57 Start: 55329, Stop: 55057, Start Num: 4

Candidate Starts for Nanao_57:

(Start: 4 @55329 has 29 MA's), (6, 55302), (7, 55299), (9, 55260), (22, 55155), (23, 55128), (24, 55116), (26, 55098), (28, 55089),

Gene: Nigel_58 Start: 55443, Stop: 55117, Start Num: 4

Candidate Starts for Nigel_58:

(Start: 4 @55443 has 29 MA's), (6, 55416), (9, 55374), (13, 55317), (20, 55272), (24, 55182), (27, 55158),

Gene: Poster_57 Start: 55330, Stop: 55058, Start Num: 4

Candidate Starts for Poster_57:

(Start: 4 @55330 has 29 MA's), (6, 55303), (7, 55300), (9, 55261), (22, 55156), (23, 55129), (24, 55117), (26, 55099), (28, 55090),

Gene: Prince_58 Start: 56548, Stop: 56276, Start Num: 4

Candidate Starts for Prince_58:

(Start: 4 @56548 has 29 MA's), (6, 56521), (7, 56518), (9, 56479), (22, 56374), (23, 56347), (24, 56335), (26, 56317), (28, 56308), (31, 56293),

Gene: QueenPie_56 Start: 56063, Stop: 55791, Start Num: 4

Candidate Starts for QueenPie_56:

(Start: 4 @56063 has 29 MA's), (6, 56036), (9, 55994), (22, 55889), (23, 55862), (24, 55850), (26, 55832), (28, 55823),

Gene: Quesadilla_63 Start: 56737, Stop: 56441, Start Num: 5

Candidate Starts for Quesadilla_63:

(Start: 5 @56737 has 1 MA's), (24, 56509), (32, 56458), (34, 56449),

Gene: RawrgerThat_59 Start: 56388, Stop: 56116, Start Num: 4

Candidate Starts for RawrgerThat_59:

(Start: 4 @56388 has 29 MA's), (6, 56361), (7, 56358), (9, 56319), (22, 56214), (23, 56187), (24, 56175), (26, 56157), (28, 56148),

Gene: Stinger_59 Start: 55258, Stop: 54989, Start Num: 4

Candidate Starts for Stinger_59:

(Start: 4 @55258 has 29 MA's), (6, 55231), (9, 55189), (14, 55144), (21, 55099), (22, 55075), (23, 55048), (24, 55036), (29, 55003),

Gene: Vincenzo_61 Start: 57535, Stop: 57200, Start Num: 4

Candidate Starts for Vincenzo_61:

(Start: 4 @57535 has 29 MA's), (6, 57508), (9, 57466), (12, 57421), (16, 57391), (19, 57367), (20, 57364), (28, 57247), (33, 57220),

Gene: VioletZ_60 Start: 56461, Stop: 56189, Start Num: 4

Candidate Starts for VioletZ_60:

(Start: 4 @56461 has 29 MA's), (6, 56434), (7, 56431), (9, 56392), (22, 56287), (23, 56260), (24, 56248), (26, 56230), (28, 56221),

Gene: Waleliano_58 Start: 56402, Stop: 56130, Start Num: 4

Candidate Starts for Waleliano_58:

(Start: 4 @56402 has 29 MA's), (6, 56375), (7, 56372), (9, 56333), (22, 56228), (23, 56201), (24, 56189), (26, 56171), (28, 56162),

Gene: Xincheng_59 Start: 57567, Stop: 57295, Start Num: 4

Candidate Starts for Xincheng_59:

(Start: 4 @57567 has 29 MA's), (6, 57540), (9, 57498), (22, 57393), (23, 57366), (24, 57354), (28, 57327),

Gene: Zemanar_59 Start: 56234, Stop: 55962, Start Num: 4

Candidate Starts for Zemanar_59:

(Start: 4 @56234 has 29 MA's), (6, 56207), (7, 56204), (9, 56165), (22, 56060), (23, 56033), (24, 56021), (26, 56003), (28, 55994),