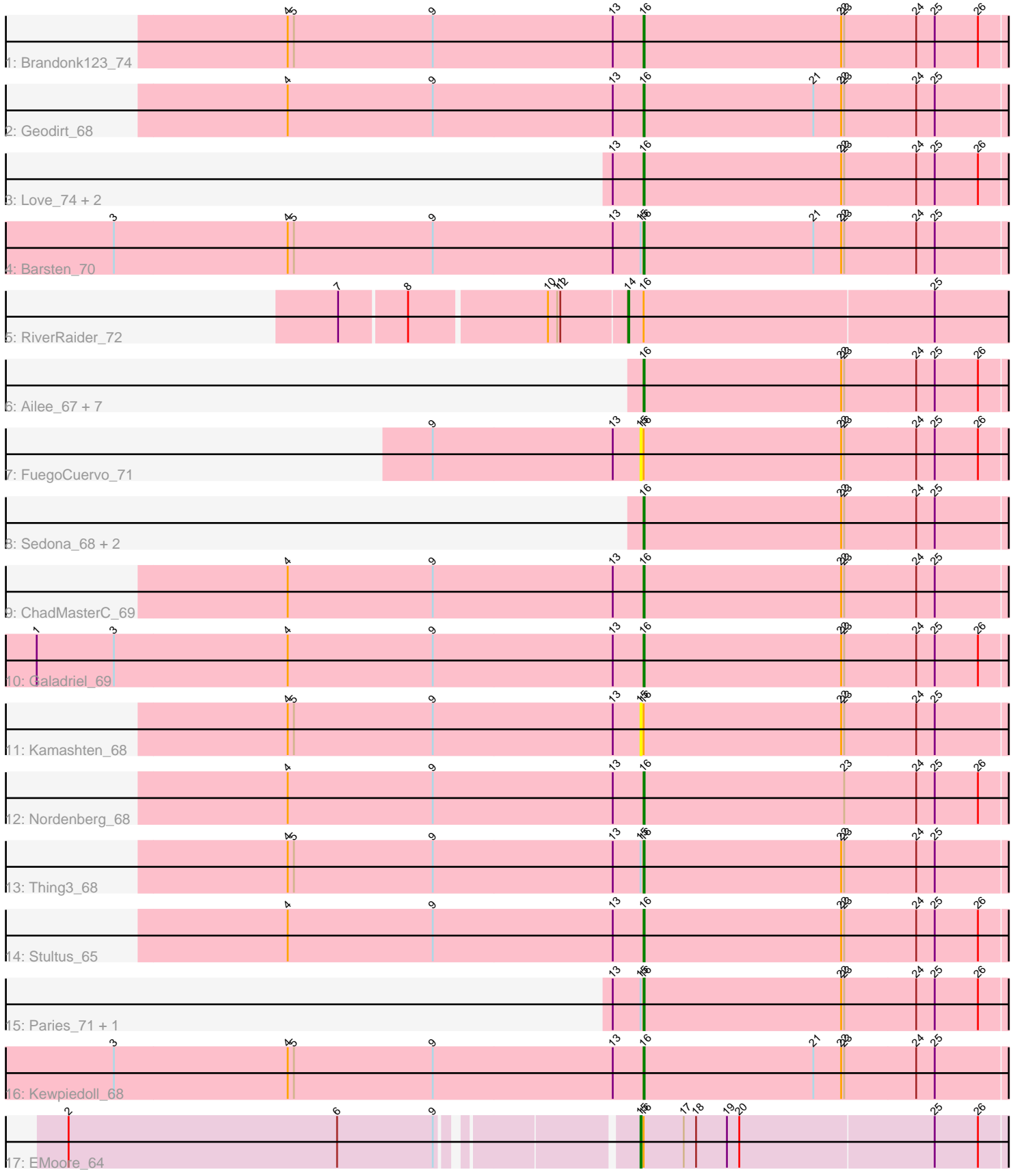


Pham 212867



Note: Tracks are now grouped by subcluster and scaled. Switching in subcluster is indicated by changes in track color. Track scale is now set by default to display the region 30 bp upstream of start 1 to 30 bp downstream of the last possible start. If this default region is judged to be packed too tightly with annotated starts, the track will be further scaled to only show that region of the ORF with annotated starts. This action will be indicated by adding "Zoomed" to the title. For starts, yellow indicates the location of called starts comprised solely of Glimmer/GeneMark auto-annotations, green indicates the location of called starts with at least 1 manual gene annotation.

Pham 212867 Report

This analysis was run 02/22/25 on database version 588.

Pham number 212867 has 29 members, 2 are drafts.

Phages represented in each track:

- Track 1 : Brandonk123_74
- Track 2 : Geodirt_68
- Track 3 : Love_74, Affeca_70, Angelicage_68
- Track 4 : Barsten_70
- Track 5 : RiverRaider_72
- Track 6 : Ailee_67, Lennon_69, Jabberwocky_68, Fitzgerald_68, Sitar_69, Sanjuju_68, Shivanishola_69, McKinley_70
- Track 7 : FuegoCuervo_71
- Track 8 : Sedona_68, Bibwit_68, Keitabear_68
- Track 9 : ChadMasterC_69
- Track 10 : Galadriel_69
- Track 11 : Kamashten_68
- Track 12 : Nordenberg_68
- Track 13 : Thing3_68
- Track 14 : Stultus_65
- Track 15 : Paries_71, BobBob_70
- Track 16 : Kewpiedoll_68
- Track 17 : EMoore_64

Summary of Final Annotations (See graph section above for start numbers):

The start number called the most often in the published annotations is 16, it was called in 25 of the 27 non-draft genes in the pham.

Genes that call this "Most Annotated" start:

- Affeca_70, Ailee_67, Angelicage_68, Barsten_70, Bibwit_68, BobBob_70, Brandonk123_74, ChadMasterC_69, Fitzgerald_68, Galadriel_69, Geodirt_68, Jabberwocky_68, Keitabear_68, Kewpiedoll_68, Lennon_69, Love_74, McKinley_70, Nordenberg_68, Paries_71, Sanjuju_68, Sedona_68, Shivanishola_69, Sitar_69, Stultus_65, Thing3_68,

Genes that have the "Most Annotated" start but do not call it:

- EMoore_64, FuegoCuervo_71, Kamashten_68, RiverRaider_72,

Genes that do not have the "Most Annotated" start:

-

Summary by start number:

Start 14:

- Found in 1 of 29 (3.4%) of genes in pham
- Manual Annotations of this start: 1 of 27
- Called 100.0% of time when present
- Phage (with cluster) where this start called: RiverRaider_72 (DE1),

Start 15:

- Found in 7 of 29 (24.1%) of genes in pham
- Manual Annotations of this start: 1 of 27
- Called 42.9% of time when present
- Phage (with cluster) where this start called: EMoore_64 (DE2), FuegoCuervo_71 (DE1), Kamashten_68 (DE1),

Start 16:

- Found in 29 of 29 (100.0%) of genes in pham
- Manual Annotations of this start: 25 of 27
- Called 86.2% of time when present
- Phage (with cluster) where this start called: Affeca_70 (DE1), Ailee_67 (DE1), Angelicage_68 (DE1), Barsten_70 (DE1), Bibwit_68 (DE1), BobBob_70 (DE1), Brandonk123_74 (DE1), ChadMasterC_69 (DE1), Fitzgerald_68 (DE1), Galadriel_69 (DE1), Geodirt_68 (DE1), Jabberwocky_68 (DE1), Keitabear_68 (DE1), Kewpiedoll_68 (DE1), Lennon_69 (DE1), Love_74 (DE1), McKinley_70 (DE1), Nordenberg_68 (DE1), Paries_71 (DE1), Sanjuju_68 (DE1), Sedona_68 (DE1), Shivanishola_69 (DE1), Sitar_69 (DE1), Stultus_65 (DE1), Thing3_68 (DE1),

Summary by clusters:

There are 2 clusters represented in this pham: DE1, DE2,

Info for manual annotations of cluster DE1:

- Start number 14 was manually annotated 1 time for cluster DE1.
- Start number 16 was manually annotated 25 times for cluster DE1.

Info for manual annotations of cluster DE2:

- Start number 15 was manually annotated 1 time for cluster DE2.

Gene Information:

Gene: Affeca_70 Start: 52633, Stop: 52995, Start Num: 16

Candidate Starts for Affeca_70:

(13, 52603), (Start: 16 @52633 has 25 MA's), (22, 52825), (23, 52828), (24, 52897), (25, 52915), (26, 52957),

Gene: Ailee_67 Start: 51668, Stop: 52030, Start Num: 16

Candidate Starts for Ailee_67:

(Start: 16 @51668 has 25 MA's), (22, 51860), (23, 51863), (24, 51932), (25, 51950), (26, 51992),

Gene: Angelicage_68 Start: 52585, Stop: 52947, Start Num: 16

Candidate Starts for Angelicage_68:

(13, 52555), (Start: 16 @52585 has 25 MA's), (22, 52777), (23, 52780), (24, 52849), (25, 52867), (26, 52909),

Gene: Barsten_70 Start: 52383, Stop: 52745, Start Num: 16

Candidate Starts for Barsten_70:

(3, 51870), (4, 52038), (5, 52044), (9, 52179), (13, 52353), (Start: 15 @52380 has 1 MA's), (Start: 16 @52383 has 25 MA's), (21, 52548), (22, 52575), (23, 52578), (24, 52647), (25, 52665),

Gene: Bibwit_68 Start: 51262, Stop: 51624, Start Num: 16

Candidate Starts for Bibwit_68:

(Start: 16 @51262 has 25 MA's), (22, 51454), (23, 51457), (24, 51526), (25, 51544),

Gene: BobBob_70 Start: 51885, Stop: 52247, Start Num: 16

Candidate Starts for BobBob_70:

(13, 51855), (Start: 15 @51882 has 1 MA's), (Start: 16 @51885 has 25 MA's), (22, 52077), (23, 52080), (24, 52149), (25, 52167), (26, 52209),

Gene: Brandonk123_74 Start: 52277, Stop: 52639, Start Num: 16

Candidate Starts for Brandonk123_74:

(4, 51932), (5, 51938), (9, 52073), (13, 52247), (Start: 16 @52277 has 25 MA's), (22, 52469), (23, 52472), (24, 52541), (25, 52559), (26, 52601),

Gene: ChadMasterC_69 Start: 53759, Stop: 54121, Start Num: 16

Candidate Starts for ChadMasterC_69:

(4, 53414), (9, 53555), (13, 53729), (Start: 16 @53759 has 25 MA's), (22, 53951), (23, 53954), (24, 54023), (25, 54041),

Gene: EMoore_64 Start: 50663, Stop: 51022, Start Num: 15

Candidate Starts for EMoore_64:

(2, 50141), (6, 50402), (9, 50495), (Start: 15 @50663 has 1 MA's), (Start: 16 @50666 has 25 MA's), (17, 50705), (18, 50717), (19, 50747), (20, 50759), (25, 50945), (26, 50987),

Gene: Fitzgerald_68 Start: 52410, Stop: 52772, Start Num: 16

Candidate Starts for Fitzgerald_68:

(Start: 16 @52410 has 25 MA's), (22, 52602), (23, 52605), (24, 52674), (25, 52692), (26, 52734),

Gene: FuegoCuervo_71 Start: 51645, Stop: 52010, Start Num: 15

Candidate Starts for FuegoCuervo_71:

(9, 51444), (13, 51618), (Start: 15 @51645 has 1 MA's), (Start: 16 @51648 has 25 MA's), (22, 51840), (23, 51843), (24, 51912), (25, 51930), (26, 51972),

Gene: Galadriel_69 Start: 52577, Stop: 52939, Start Num: 16

Candidate Starts for Galadriel_69:

(1, 51989), (3, 52064), (4, 52232), (9, 52373), (13, 52547), (Start: 16 @52577 has 25 MA's), (22, 52769), (23, 52772), (24, 52841), (25, 52859), (26, 52901),

Gene: Geodirt_68 Start: 52815, Stop: 53177, Start Num: 16

Candidate Starts for Geodirt_68:

(4, 52470), (9, 52611), (13, 52785), (Start: 16 @52815 has 25 MA's), (21, 52980), (22, 53007), (23, 53010), (24, 53079), (25, 53097),

Gene: Jabberwocky_68 Start: 52669, Stop: 53031, Start Num: 16
Candidate Starts for Jabberwocky_68:
(Start: 16 @52669 has 25 MA's), (22, 52861), (23, 52864), (24, 52933), (25, 52951), (26, 52993),

Gene: Kamashten_68 Start: 51700, Stop: 52065, Start Num: 15
Candidate Starts for Kamashten_68:
(4, 51358), (5, 51364), (9, 51499), (13, 51673), (Start: 15 @51700 has 1 MA's), (Start: 16 @51703 has 25 MA's), (22, 51895), (23, 51898), (24, 51967), (25, 51985),

Gene: Keitabear_68 Start: 53182, Stop: 53544, Start Num: 16
Candidate Starts for Keitabear_68:
(Start: 16 @53182 has 25 MA's), (22, 53374), (23, 53377), (24, 53446), (25, 53464),

Gene: Kewpiedoll_68 Start: 52544, Stop: 52906, Start Num: 16
Candidate Starts for Kewpiedoll_68:
(3, 52031), (4, 52199), (5, 52205), (9, 52340), (13, 52514), (Start: 16 @52544 has 25 MA's), (21, 52709), (22, 52736), (23, 52739), (24, 52808), (25, 52826),

Gene: Lennon_69 Start: 53331, Stop: 53693, Start Num: 16
Candidate Starts for Lennon_69:
(Start: 16 @53331 has 25 MA's), (22, 53523), (23, 53526), (24, 53595), (25, 53613), (26, 53655),

Gene: Love_74 Start: 53073, Stop: 53435, Start Num: 16
Candidate Starts for Love_74:
(13, 53043), (Start: 16 @53073 has 25 MA's), (22, 53265), (23, 53268), (24, 53337), (25, 53355), (26, 53397),

Gene: McKinley_70 Start: 52211, Stop: 52573, Start Num: 16
Candidate Starts for McKinley_70:
(Start: 16 @52211 has 25 MA's), (22, 52403), (23, 52406), (24, 52475), (25, 52493), (26, 52535),

Gene: Nordenberg_68 Start: 51193, Stop: 51555, Start Num: 16
Candidate Starts for Nordenberg_68:
(4, 50848), (9, 50989), (13, 51163), (Start: 16 @51193 has 25 MA's), (23, 51388), (24, 51457), (25, 51475), (26, 51517),

Gene: Paries_71 Start: 52763, Stop: 53125, Start Num: 16
Candidate Starts for Paries_71:
(13, 52733), (Start: 15 @52760 has 1 MA's), (Start: 16 @52763 has 25 MA's), (22, 52955), (23, 52958), (24, 53027), (25, 53045), (26, 53087),

Gene: RiverRaider_72 Start: 50800, Stop: 51198, Start Num: 14
Candidate Starts for RiverRaider_72:
(7, 50533), (8, 50596), (10, 50725), (11, 50734), (12, 50737), (Start: 14 @50800 has 1 MA's), (Start: 16 @50815 has 25 MA's), (25, 51094),

Gene: Sanjuju_68 Start: 52542, Stop: 52904, Start Num: 16
Candidate Starts for Sanjuju_68:
(Start: 16 @52542 has 25 MA's), (22, 52734), (23, 52737), (24, 52806), (25, 52824), (26, 52866),

Gene: Sedona_68 Start: 53115, Stop: 53477, Start Num: 16
Candidate Starts for Sedona_68:

(Start: 16 @53115 has 25 MA's), (22, 53307), (23, 53310), (24, 53379), (25, 53397),

Gene: Shivanishola_69 Start: 50845, Stop: 51207, Start Num: 16

Candidate Starts for Shivanishola_69:

(Start: 16 @50845 has 25 MA's), (22, 51037), (23, 51040), (24, 51109), (25, 51127), (26, 51169),

Gene: Sitar_69 Start: 53040, Stop: 53402, Start Num: 16

Candidate Starts for Sitar_69:

(Start: 16 @53040 has 25 MA's), (22, 53232), (23, 53235), (24, 53304), (25, 53322), (26, 53364),

Gene: Stultus_65 Start: 51287, Stop: 51649, Start Num: 16

Candidate Starts for Stultus_65:

(4, 50942), (9, 51083), (13, 51257), (Start: 16 @51287 has 25 MA's), (22, 51479), (23, 51482), (24, 51551), (25, 51569), (26, 51611),

Gene: Thing3_68 Start: 51703, Stop: 52065, Start Num: 16

Candidate Starts for Thing3_68:

(4, 51358), (5, 51364), (9, 51499), (13, 51673), (Start: 15 @51700 has 1 MA's), (Start: 16 @51703 has 25 MA's), (22, 51895), (23, 51898), (24, 51967), (25, 51985),