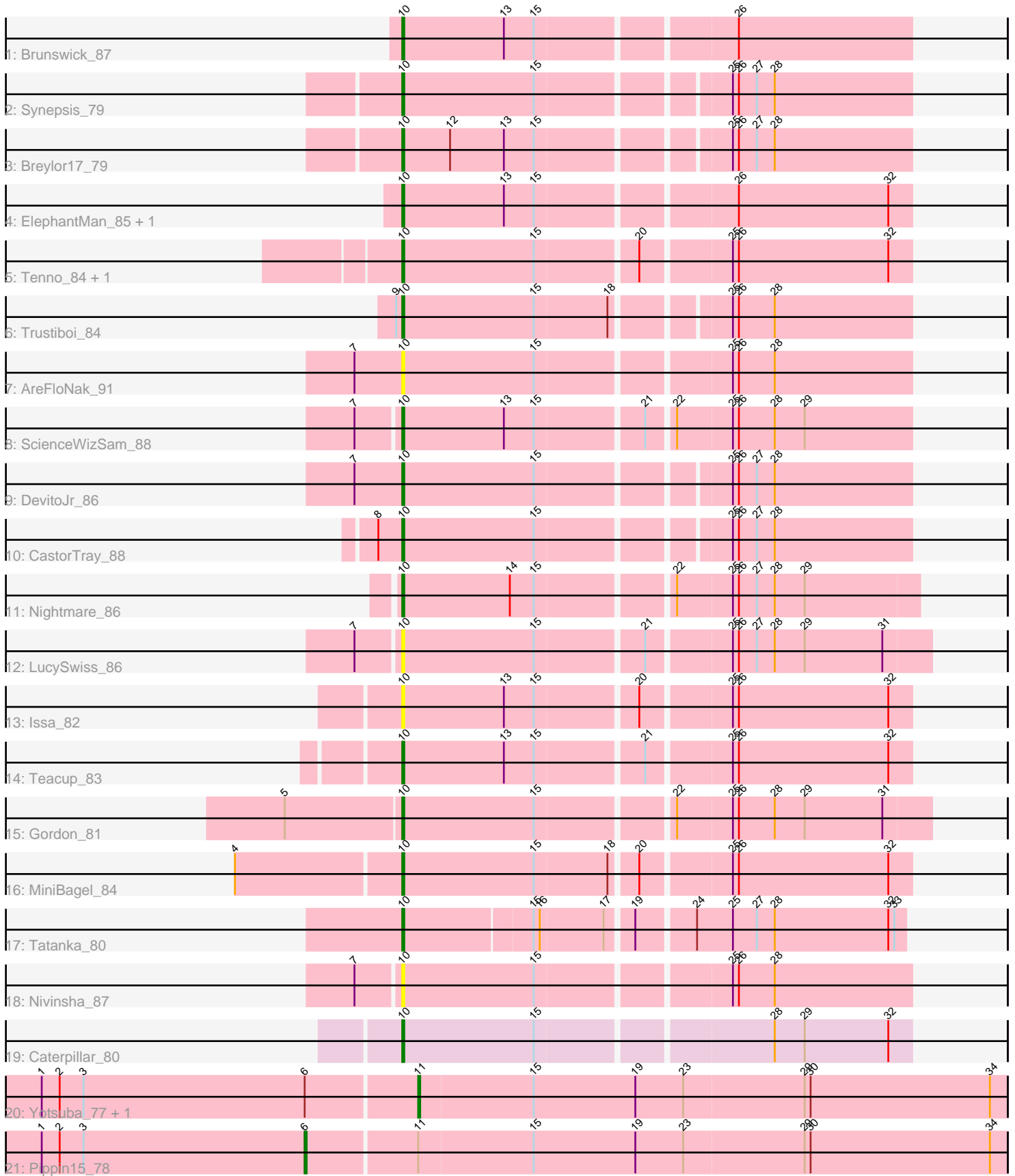


Pham 212933



Note: Tracks are now grouped by subcluster and scaled. Switching in subcluster is indicated by changes in track color. Track scale is now set by default to display the region 30 bp upstream of start 1 to 30 bp downstream of the last possible start. If this default region is judged to be packed too tightly with annotated starts, the track will be further scaled to only show that region of the ORF with annotated starts. This action will be indicated by adding "Zoomed" to the title. For starts, yellow indicates the location of called starts comprised solely of Glimmer/GeneMark auto-annotations, green indicates the location of called starts with at least 1 manual gene annotation.

Pham 212933 Report

This analysis was run 02/22/25 on database version 588.

Pham number 212933 has 24 members, 4 are drafts.

Phages represented in each track:

- Track 1 : Brunswick_87
- Track 2 : Synopsis_79
- Track 3 : Breylor17_79
- Track 4 : ElephantMan_85, Niktson_85
- Track 5 : Tenno_84, CapnMurica_80
- Track 6 : Trustiboi_84
- Track 7 : AreFloNak_91
- Track 8 : ScienceWizSam_88
- Track 9 : DevitoJr_86
- Track 10 : CastorTray_88
- Track 11 : Nightmare_86
- Track 12 : LucySwiss_86
- Track 13 : Issa_82
- Track 14 : Teacup_83
- Track 15 : Gordon_81
- Track 16 : MiniBagel_84
- Track 17 : Tatanka_80
- Track 18 : Nivinsha_87
- Track 19 : Caterpillar_80
- Track 20 : Yotsuba_77, JoyLin_77
- Track 21 : Pippin15_78

Summary of Final Annotations (See graph section above for start numbers):

The start number called the most often in the published annotations is 10, it was called in 17 of the 20 non-draft genes in the pham.

Genes that call this "Most Annotated" start:

- AreFloNak_91, Breylor17_79, Brunswick_87, CapnMurica_80, CastorTray_88, Caterpillar_80, DevitoJr_86, ElephantMan_85, Gordon_81, Issa_82, LucySwiss_86, MiniBagel_84, Nightmare_86, Niktson_85, Nivinsha_87, ScienceWizSam_88, Synopsis_79, Tatanka_80, Teacup_83, Tenno_84, Trustiboi_84,

Genes that have the "Most Annotated" start but do not call it:

-

Genes that do not have the "Most Annotated" start:

- JoyLin_77, Pippin15_78, Yotsuba_77,

Summary by start number:

Start 6:

- Found in 3 of 24 (12.5%) of genes in pham
- Manual Annotations of this start: 1 of 20
- Called 33.3% of time when present
- Phage (with cluster) where this start called: Pippin15_78 (JA),

Start 10:

- Found in 21 of 24 (87.5%) of genes in pham
- Manual Annotations of this start: 17 of 20
- Called 100.0% of time when present
- Phage (with cluster) where this start called: AreFloNak_91 (AU1), Breylor17_79 (AU1), Brunswick_87 (AU1), CapnMurica_80 (AU1), CastorTray_88 (AU1), Caterpillar_80 (AU4), DevitoJr_86 (AU1), ElephantMan_85 (AU1), Gordon_81 (AU1), Issa_82 (AU1), LucySwiss_86 (AU1), MiniBagel_84 (AU1), Nightmare_86 (AU1), Niktson_85 (AU1), Nivinsha_87 (AU1), ScienceWizSam_88 (AU1), Synepsis_79 (AU1), Tatanka_80 (AU1), Teacup_83 (AU1), Tenno_84 (AU1), Trustiboi_84 (AU1),

Start 11:

- Found in 3 of 24 (12.5%) of genes in pham
- Manual Annotations of this start: 2 of 20
- Called 66.7% of time when present
- Phage (with cluster) where this start called: JoyLin_77 (JA), Yotsuba_77 (JA),

Summary by clusters:

There are 3 clusters represented in this pham: AU1, AU4, JA,

Info for manual annotations of cluster AU1:

- Start number 10 was manually annotated 16 times for cluster AU1.

Info for manual annotations of cluster AU4:

- Start number 10 was manually annotated 1 time for cluster AU4.

Info for manual annotations of cluster JA:

- Start number 6 was manually annotated 1 time for cluster JA.
- Start number 11 was manually annotated 2 times for cluster JA.

Gene Information:

Gene: AreFloNak_91 Start: 53020, Stop: 53265, Start Num: 10

Candidate Starts for AreFloNak_91:

(7, 52996), (Start: 10 @53020 has 17 MA's), (15, 53086), (25, 53176), (26, 53179), (28, 53197),

Gene: Breylor17_79 Start: 52786, Stop: 53028, Start Num: 10

Candidate Starts for Breylor17_79:

(Start: 10 @52786 has 17 MA's), (12, 52810), (13, 52837), (15, 52852), (25, 52939), (26, 52942), (27, 52951), (28, 52960),

Gene: Brunswick_87 Start: 52853, Stop: 53098, Start Num: 10

Candidate Starts for Brunswick_87:

(Start: 10 @52853 has 17 MA's), (13, 52904), (15, 52919), (26, 53012),

Gene: CapnMurica_80 Start: 52975, Stop: 53220, Start Num: 10

Candidate Starts for CapnMurica_80:

(Start: 10 @52975 has 17 MA's), (15, 53041), (20, 53089), (25, 53131), (26, 53134), (32, 53209),

Gene: CastorTray_88 Start: 53338, Stop: 53580, Start Num: 10

Candidate Starts for CastorTray_88:

(8, 53326), (Start: 10 @53338 has 17 MA's), (15, 53404), (25, 53491), (26, 53494), (27, 53503), (28, 53512),

Gene: Caterpillar_80 Start: 51328, Stop: 51573, Start Num: 10

Candidate Starts for Caterpillar_80:

(Start: 10 @51328 has 17 MA's), (15, 51394), (28, 51505), (29, 51520), (32, 51562),

Gene: DevitoJr_86 Start: 52897, Stop: 53139, Start Num: 10

Candidate Starts for DevitoJr_86:

(7, 52873), (Start: 10 @52897 has 17 MA's), (15, 52963), (25, 53050), (26, 53053), (27, 53062), (28, 53071),

Gene: ElephantMan_85 Start: 53383, Stop: 53628, Start Num: 10

Candidate Starts for ElephantMan_85:

(Start: 10 @53383 has 17 MA's), (13, 53434), (15, 53449), (26, 53542), (32, 53617),

Gene: Gordon_81 Start: 53106, Stop: 53360, Start Num: 10

Candidate Starts for Gordon_81:

(5, 53049), (Start: 10 @53106 has 17 MA's), (15, 53172), (22, 53235), (25, 53262), (26, 53265), (28, 53283), (29, 53298), (31, 53337),

Gene: Issa_82 Start: 52041, Stop: 52286, Start Num: 10

Candidate Starts for Issa_82:

(Start: 10 @52041 has 17 MA's), (13, 52092), (15, 52107), (20, 52155), (25, 52197), (26, 52200), (32, 52275),

Gene: JoyLin_77 Start: 51377, Stop: 51670, Start Num: 11

Candidate Starts for JoyLin_77:

(1, 51191), (2, 51200), (3, 51212), (Start: 6 @51323 has 1 MA's), (Start: 11 @51377 has 2 MA's), (15, 51434), (19, 51485), (23, 51509), (29, 51569), (30, 51572), (34, 51662),

Gene: LucySwiss_86 Start: 52913, Stop: 53167, Start Num: 10

Candidate Starts for LucySwiss_86:

(7, 52892), (Start: 10 @52913 has 17 MA's), (15, 52979), (21, 53030), (25, 53069), (26, 53072), (27, 53081), (28, 53090), (29, 53105), (31, 53144),

Gene: MiniBagel_84 Start: 52801, Stop: 53046, Start Num: 10

Candidate Starts for MiniBagel_84:

(4, 52720), (Start: 10 @52801 has 17 MA's), (15, 52867), (18, 52903), (20, 52915), (25, 52957), (26, 52960), (32, 53035),

Gene: Nightmare_86 Start: 53676, Stop: 53924, Start Num: 10

Candidate Starts for Nightmare_86:

(Start: 10 @53676 has 17 MA's), (14, 53730), (15, 53742), (22, 53805), (25, 53832), (26, 53835), (27, 53844), (28, 53853), (29, 53868),

Gene: Niktson_85 Start: 53383, Stop: 53628, Start Num: 10

Candidate Starts for Niktson_85:

(Start: 10 @53383 has 17 MA's), (13, 53434), (15, 53449), (26, 53542), (32, 53617),

Gene: Nivinsha_87 Start: 53024, Stop: 53269, Start Num: 10

Candidate Starts for Nivinsha_87:

(7, 53003), (Start: 10 @53024 has 17 MA's), (15, 53090), (25, 53180), (26, 53183), (28, 53201),

Gene: Pippin15_78 Start: 47872, Stop: 48219, Start Num: 6

Candidate Starts for Pippin15_78:

(1, 47740), (2, 47749), (3, 47761), (Start: 6 @47872 has 1 MA's), (Start: 11 @47926 has 2 MA's), (15, 47983), (19, 48034), (23, 48058), (29, 48118), (30, 48121), (34, 48211),

Gene: ScienceWizSam_88 Start: 53067, Stop: 53312, Start Num: 10

Candidate Starts for ScienceWizSam_88:

(7, 53046), (Start: 10 @53067 has 17 MA's), (13, 53118), (15, 53133), (21, 53184), (22, 53196), (25, 53223), (26, 53226), (28, 53244), (29, 53259),

Gene: Synopsis_79 Start: 52500, Stop: 52742, Start Num: 10

Candidate Starts for Synopsis_79:

(Start: 10 @52500 has 17 MA's), (15, 52566), (25, 52653), (26, 52656), (27, 52665), (28, 52674),

Gene: Tatanka_80 Start: 52808, Stop: 53047, Start Num: 10

Candidate Starts for Tatanka_80:

(Start: 10 @52808 has 17 MA's), (15, 52871), (16, 52874), (17, 52904), (19, 52916), (24, 52943), (25, 52961), (27, 52973), (28, 52982), (32, 53039), (33, 53042),

Gene: Teacup_83 Start: 53119, Stop: 53364, Start Num: 10

Candidate Starts for Teacup_83:

(Start: 10 @53119 has 17 MA's), (13, 53170), (15, 53185), (21, 53236), (25, 53275), (26, 53278), (32, 53353),

Gene: Tenno_84 Start: 53009, Stop: 53254, Start Num: 10

Candidate Starts for Tenno_84:

(Start: 10 @53009 has 17 MA's), (15, 53075), (20, 53123), (25, 53165), (26, 53168), (32, 53243),

Gene: Trustiboi_84 Start: 53082, Stop: 53324, Start Num: 10

Candidate Starts for Trustiboi_84:

(9, 53079), (Start: 10 @53082 has 17 MA's), (15, 53148), (18, 53184), (25, 53235), (26, 53238), (28, 53256),

Gene: Yotsuba_77 Start: 51395, Stop: 51688, Start Num: 11

Candidate Starts for Yotsuba_77:

(1, 51209), (2, 51218), (3, 51230), (Start: 6 @51341 has 1 MA's), (Start: 11 @51395 has 2 MA's), (15, 51452), (19, 51503), (23, 51527), (29, 51587), (30, 51590), (34, 51680),

