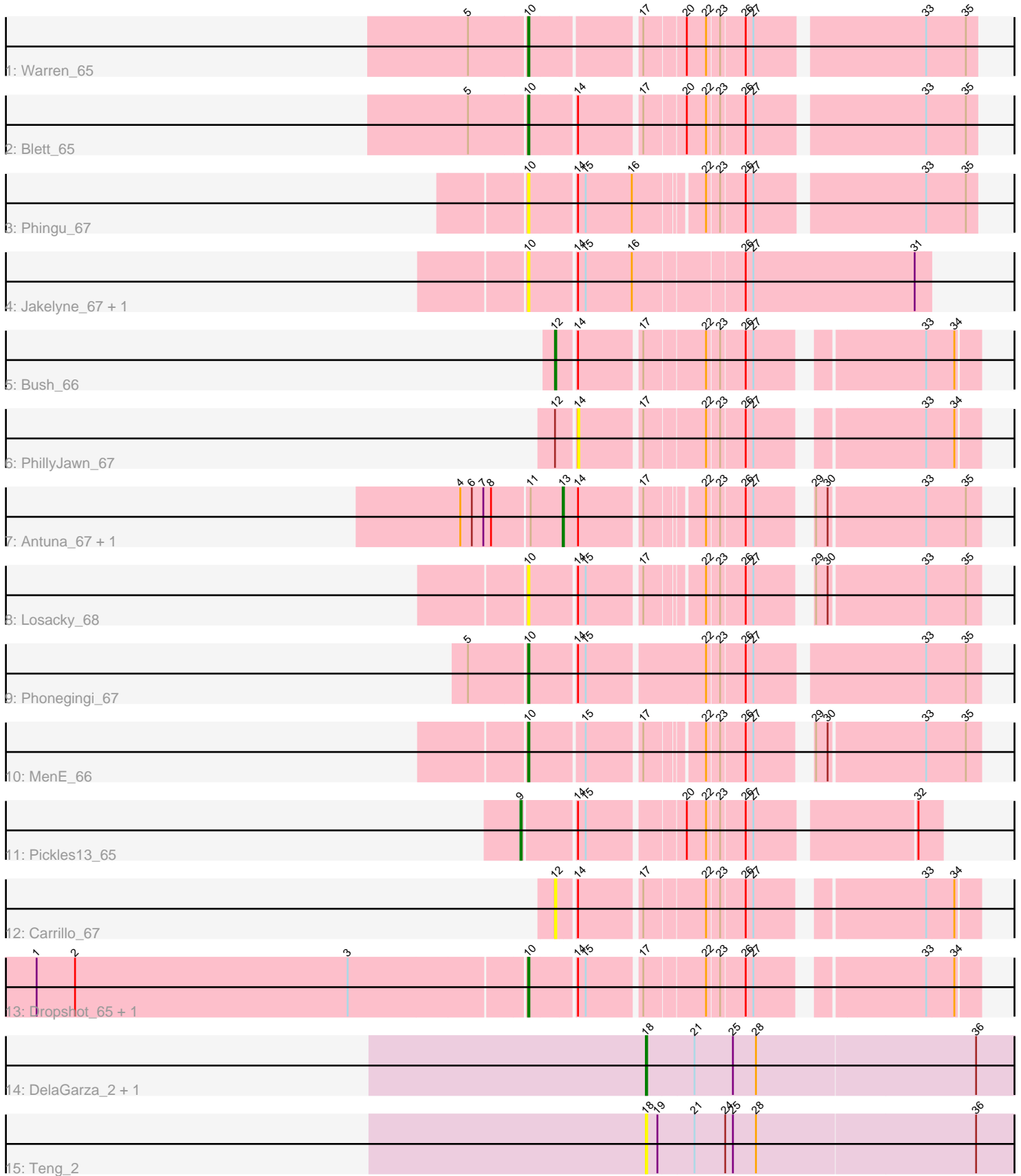


# Pham 213021



Note: Tracks are now grouped by subcluster and scaled. Switching in subcluster is indicated by changes in track color. Track scale is now set by default to display the region 30 bp upstream of start 1 to 30 bp downstream of the last possible start. If this default region is judged to be packed too tightly with annotated starts, the track will be further scaled to only show that region of the ORF with annotated starts. This action will be indicated by adding "Zoomed" to the title. For starts, yellow indicates the location of called starts comprised solely of Glimmer/GeneMark auto-annotations, green indicates the location of called starts with at least 1 manual gene annotation.

## Pham 213021 Report

This analysis was run 02/22/25 on database version 588.

Pham number 213021 has 19 members, 8 are drafts.

Phages represented in each track:

- Track 1 : Warren\_65
- Track 2 : Blett\_65
- Track 3 : Phingu\_67
- Track 4 : Jakelyne\_67, Guzman\_64
- Track 5 : Bush\_66
- Track 6 : PhillyJawn\_67
- Track 7 : Antuna\_67, Violeta\_67
- Track 8 : Losacky\_68
- Track 9 : Phonegingi\_67
- Track 10 : MenE\_66
- Track 11 : Pickles13\_65
- Track 12 : Carrillo\_67
- Track 13 : Dropshot\_65, Appa\_65
- Track 14 : DelaGarza\_2, Lesiram\_2
- Track 15 : Teng\_2

### ***Summary of Final Annotations (See graph section above for start numbers):***

The start number called the most often in the published annotations is 10, it was called in 6 of the 11 non-draft genes in the pham.

Genes that call this "Most Annotated" start:

- Appa\_65, Blett\_65, Dropshot\_65, Guzman\_64, Jakelyne\_67, Losacky\_68, MenE\_66, Phingu\_67, Phonegingi\_67, Warren\_65,

Genes that have the "Most Annotated" start but do not call it:

- 

Genes that do not have the "Most Annotated" start:

- Antuna\_67, Bush\_66, Carrillo\_67, DelaGarza\_2, Lesiram\_2, PhillyJawn\_67, Pickles13\_65, Teng\_2, Violeta\_67,

### **Summary by start number:**

Start 9:

- Found in 1 of 19 ( 5.3% ) of genes in pham
- Manual Annotations of this start: 1 of 11
- Called 100.0% of time when present
- Phage (with cluster) where this start called: Pickles13\_65 (GA),

Start 10:

- Found in 10 of 19 ( 52.6% ) of genes in pham
- Manual Annotations of this start: 6 of 11
- Called 100.0% of time when present
- Phage (with cluster) where this start called: Appa\_65 (GA), Blett\_65 (GA), Dropshot\_65 (GA), Guzman\_64 (GA), Jakelyne\_67 (GA), Losacky\_68 (GA), MenE\_66 (GA), Phingu\_67 (GA), Phonegingi\_67 (GA), Warren\_65 (GA),

Start 12:

- Found in 3 of 19 ( 15.8% ) of genes in pham
- Manual Annotations of this start: 1 of 11
- Called 66.7% of time when present
- Phage (with cluster) where this start called: Bush\_66 (GA), Carrillo\_67 (GA),

Start 13:

- Found in 2 of 19 ( 10.5% ) of genes in pham
- Manual Annotations of this start: 1 of 11
- Called 100.0% of time when present
- Phage (with cluster) where this start called: Antuna\_67 (GA), Violeta\_67 (GA),

Start 14:

- Found in 14 of 19 ( 73.7% ) of genes in pham
- No Manual Annotations of this start.
- Called 7.1% of time when present
- Phage (with cluster) where this start called: PhillyJawn\_67 (GA),

Start 18:

- Found in 3 of 19 ( 15.8% ) of genes in pham
- Manual Annotations of this start: 2 of 11
- Called 100.0% of time when present
- Phage (with cluster) where this start called: DelaGarza\_2 (GF), Lesiram\_2 (GF), Teng\_2 (GF),

**Summary by clusters:**

There are 2 clusters represented in this pham: GF, GA,

Info for manual annotations of cluster GA:

- Start number 9 was manually annotated 1 time for cluster GA.
- Start number 10 was manually annotated 6 times for cluster GA.
- Start number 12 was manually annotated 1 time for cluster GA.
- Start number 13 was manually annotated 1 time for cluster GA.

Info for manual annotations of cluster GF:

- Start number 18 was manually annotated 2 times for cluster GF.

### **Gene Information:**

Gene: Antuna\_67 Start: 38444, Stop: 38728, Start Num: 13

Candidate Starts for Antuna\_67:

(4, 38369), (6, 38378), (7, 38387), (8, 38393), (11, 38420), (Start: 13 @38444 has 1 MA's), (14, 38456), (17, 38501), (22, 38540), (23, 38549), (26, 38567), (27, 38573), (29, 38606), (30, 38615), (33, 38687), (35, 38717),

Gene: Appa\_65 Start: 38092, Stop: 38397, Start Num: 10

Candidate Starts for Appa\_65:

(1, 37717), (2, 37747), (3, 37960), (Start: 10 @38092 has 6 MA's), (14, 38125), (15, 38131), (17, 38170), (22, 38215), (23, 38224), (26, 38242), (27, 38248), (33, 38362), (34, 38383),

Gene: Blett\_65 Start: 38245, Stop: 38562, Start Num: 10

Candidate Starts for Blett\_65:

(5, 38203), (Start: 10 @38245 has 6 MA's), (14, 38278), (17, 38323), (20, 38353), (22, 38368), (23, 38377), (26, 38395), (27, 38401), (33, 38524), (35, 38554),

Gene: Bush\_66 Start: 38304, Stop: 38591, Start Num: 12

Candidate Starts for Bush\_66:

(Start: 12 @38304 has 1 MA's), (14, 38316), (17, 38361), (22, 38406), (23, 38415), (26, 38433), (27, 38439), (33, 38553), (34, 38574),

Gene: Carrillo\_67 Start: 38232, Stop: 38519, Start Num: 12

Candidate Starts for Carrillo\_67:

(Start: 12 @38232 has 1 MA's), (14, 38244), (17, 38289), (22, 38334), (23, 38343), (26, 38361), (27, 38367), (33, 38481), (34, 38502),

Gene: DelaGarza\_2 Start: 468, Stop: 755, Start Num: 18

Candidate Starts for DelaGarza\_2:

(Start: 18 @468 has 2 MA's), (21, 504), (25, 534), (28, 552), (36, 720),

Gene: Dropshot\_65 Start: 37930, Stop: 38238, Start Num: 10

Candidate Starts for Dropshot\_65:

(1, 37555), (2, 37585), (3, 37798), (Start: 10 @37930 has 6 MA's), (14, 37963), (15, 37969), (17, 38008), (22, 38053), (23, 38062), (26, 38080), (27, 38086), (33, 38200), (34, 38221),

Gene: Guzman\_64 Start: 37777, Stop: 38076, Start Num: 10

Candidate Starts for Guzman\_64:

(Start: 10 @37777 has 6 MA's), (14, 37810), (15, 37816), (16, 37852), (26, 37933), (27, 37939), (31, 38065),

Gene: Jakelyne\_67 Start: 37929, Stop: 38228, Start Num: 10

Candidate Starts for Jakelyne\_67:

(Start: 10 @37929 has 6 MA's), (14, 37962), (15, 37968), (16, 38004), (26, 38085), (27, 38091), (31, 38217),

Gene: Lesiram\_2 Start: 468, Stop: 731, Start Num: 18

Candidate Starts for Lesiram\_2:

(Start: 18 @468 has 2 MA's), (21, 504), (25, 534), (28, 552), (36, 696),

Gene: Losacky\_68 Start: 38097, Stop: 38402, Start Num: 10

Candidate Starts for Losacky\_68:

(Start: 10 @38097 has 6 MA's), (14, 38130), (15, 38136), (17, 38175), (22, 38214), (23, 38223), (26, 38241), (27, 38247), (29, 38280), (30, 38289), (33, 38361), (35, 38391),

Gene: MenE\_66 Start: 37970, Stop: 38275, Start Num: 10

Candidate Starts for MenE\_66:

(Start: 10 @37970 has 6 MA's), (15, 38009), (17, 38048), (22, 38087), (23, 38096), (26, 38114), (27, 38120), (29, 38153), (30, 38162), (33, 38234), (35, 38264),

Gene: PhillyJawn\_67 Start: 38188, Stop: 38463, Start Num: 14

Candidate Starts for PhillyJawn\_67:

(Start: 12 @38176 has 1 MA's), (14, 38188), (17, 38233), (22, 38278), (23, 38287), (26, 38305), (27, 38311), (33, 38425), (34, 38446),

Gene: Phingu\_67 Start: 37942, Stop: 38259, Start Num: 10

Candidate Starts for Phingu\_67:

(Start: 10 @37942 has 6 MA's), (14, 37975), (15, 37981), (16, 38017), (22, 38065), (23, 38074), (26, 38092), (27, 38098), (33, 38221), (35, 38251),

Gene: Phonegingi\_67 Start: 38811, Stop: 39134, Start Num: 10

Candidate Starts for Phonegingi\_67:

(5, 38769), (Start: 10 @38811 has 6 MA's), (14, 38844), (15, 38850), (22, 38937), (23, 38946), (26, 38964), (27, 38970), (33, 39093), (35, 39123),

Gene: Pickles13\_65 Start: 38714, Stop: 39004, Start Num: 9

Candidate Starts for Pickles13\_65:

(Start: 9 @38714 has 1 MA's), (14, 38750), (15, 38756), (20, 38825), (22, 38840), (23, 38849), (26, 38867), (27, 38873), (32, 38987),

Gene: Teng\_2 Start: 468, Stop: 755, Start Num: 18

Candidate Starts for Teng\_2:

(Start: 18 @468 has 2 MA's), (19, 477), (21, 504), (24, 528), (25, 534), (28, 552), (36, 720),

Gene: Violeta\_67 Start: 38314, Stop: 38598, Start Num: 13

Candidate Starts for Violeta\_67:

(4, 38239), (6, 38248), (7, 38257), (8, 38263), (11, 38290), (Start: 13 @38314 has 1 MA's), (14, 38326), (17, 38371), (22, 38410), (23, 38419), (26, 38437), (27, 38443), (29, 38476), (30, 38485), (33, 38557), (35, 38587),

Gene: Warren\_65 Start: 38108, Stop: 38425, Start Num: 10

Candidate Starts for Warren\_65:

(5, 38066), (Start: 10 @38108 has 6 MA's), (17, 38186), (20, 38216), (22, 38231), (23, 38240), (26, 38258), (27, 38264), (33, 38387), (35, 38417),