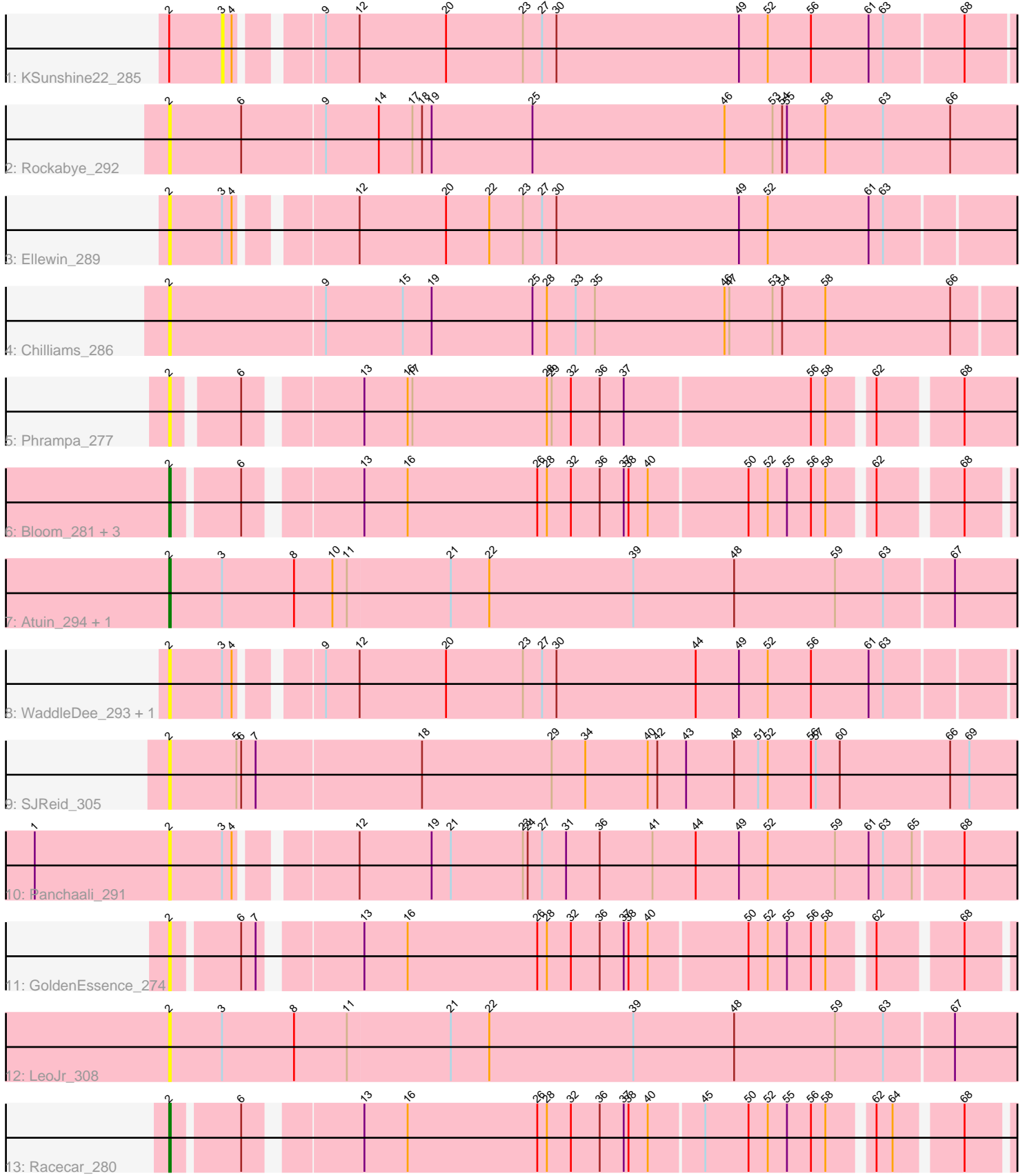


Pham 213046



Note: Tracks are now grouped by subcluster and scaled. Switching in subcluster is indicated by changes in track color. Track scale is now set by default to display the region 30 bp upstream of start 1 to 30 bp downstream of the last possible start. If this default region is judged to be packed too tightly with annotated starts, the track will be further scaled to only show that region of the ORF with annotated starts. This action will be indicated by adding "Zoomed" to the title. For starts, yellow indicates the location of called starts comprised solely of Glimmer/GeneMark auto-annotations, green indicates the location of called starts with at least 1 manual gene annotation.

Pham 213046 Report

This analysis was run 02/22/25 on database version 588.

Pham number 213046 has 18 members, 14 are drafts.

Phages represented in each track:

- Track 1 : KSunshine22_285
- Track 2 : Rockabye_292
- Track 3 : Ellewin_289
- Track 4 : Chilliams_286
- Track 5 : Phrampa_277
- Track 6 : Bloom_281, Talia1610_278, Patbob_282, Mimi_277
- Track 7 : Atuin_294, ReginaGlobina_306
- Track 8 : WaddleDee_293, DunneganBoMo_294
- Track 9 : SJReid_305
- Track 10 : Panchaali_291
- Track 11 : GoldenEssence_274
- Track 12 : LeoJr_308
- Track 13 : Racecar_280

Summary of Final Annotations (See graph section above for start numbers):

The start number called the most often in the published annotations is 2, it was called in 4 of the 4 non-draft genes in the pham.

Genes that call this "Most Annotated" start:

- Atuin_294, Bloom_281, Chilliams_286, DunneganBoMo_294, Ellewin_289, GoldenEssence_274, LeoJr_308, Mimi_277, Panchaali_291, Patbob_282, Phrampa_277, Racecar_280, ReginaGlobina_306, Rockabye_292, SJReid_305, Talia1610_278, WaddleDee_293,

Genes that have the "Most Annotated" start but do not call it:

- KSunshine22_285,

Genes that do not have the "Most Annotated" start:

-

Summary by start number:

Start 2:

- Found in 18 of 18 (100.0%) of genes in pham
- Manual Annotations of this start: 4 of 4
- Called 94.4% of time when present
- Phage (with cluster) where this start called: Atuin_294 (FC), Bloom_281 (FC), Chilliams_286 (FC), DunneganBoMo_294 (FC), Ellewin_289 (FC), GoldenEssence_274 (FC), LeoJr_308 (FC), Mimi_277 (FC), Panchaali_291 (FC), Patbob_282 (FC), Phrampa_277 (FC), Racecar_280 (FC), ReginaGlobina_306 (FC), Rockabye_292 (FC), SJReid_305 (FC), Talia1610_278 (FC), WaddleDee_293 (FC),

Start 3:

- Found in 8 of 18 (44.4%) of genes in pham
- No Manual Annotations of this start.
- Called 12.5% of time when present
- Phage (with cluster) where this start called: KSunshine22_285 (FC),

Summary by clusters:

There is one cluster represented in this pham: FC

Info for manual annotations of cluster FC:

- Start number 2 was manually annotated 4 times for cluster FC.

Gene Information:

Gene: Atuin_294 Start: 174462, Stop: 174995, Start Num: 2

Candidate Starts for Atuin_294:

(Start: 2 @174462 has 4 MA's), (3, 174495), (8, 174540), (10, 174564), (11, 174573), (21, 174636), (22, 174660), (39, 174750), (48, 174813), (59, 174876), (63, 174906), (67, 174948),

Gene: Bloom_281 Start: 170408, Stop: 170920, Start Num: 2

Candidate Starts for Bloom_281:

(Start: 2 @170408 has 4 MA's), (6, 170447), (13, 170510), (16, 170537), (26, 170618), (28, 170624), (32, 170639), (36, 170657), (37, 170672), (38, 170675), (40, 170687), (50, 170747), (52, 170759), (55, 170771), (56, 170786), (58, 170795), (62, 170819), (68, 170864),

Gene: Chilliams_286 Start: 169605, Stop: 170159, Start Num: 2

Candidate Starts for Chilliams_286:

(Start: 2 @169605 has 4 MA's), (9, 169701), (15, 169749), (19, 169767), (25, 169830), (28, 169839), (33, 169857), (35, 169869), (46, 169950), (47, 169953), (53, 169980), (54, 169986), (58, 170013), (66, 170091),

Gene: DunneganBoMo_294 Start: 175945, Stop: 176463, Start Num: 2

Candidate Starts for DunneganBoMo_294:

(Start: 2 @175945 has 4 MA's), (3, 175978), (4, 175984), (9, 176026), (12, 176047), (20, 176101), (23, 176149), (27, 176161), (30, 176170), (44, 176257), (49, 176284), (52, 176302), (56, 176329), (61, 176365), (63, 176374),

Gene: Ellewin_289 Start: 175375, Stop: 175890, Start Num: 2

Candidate Starts for Ellewin_289:

(Start: 2 @175375 has 4 MA's), (3, 175408), (4, 175414), (12, 175477), (20, 175531), (22, 175558), (23, 175579), (27, 175591), (30, 175600), (49, 175714), (52, 175732), (61, 175795), (63, 175804),

Gene: GoldenEssence_274 Start: 167627, Stop: 168139, Start Num: 2

Candidate Starts for GoldenEssence_274:

(Start: 2 @167627 has 4 MA's), (6, 167666), (7, 167675), (13, 167729), (16, 167756), (26, 167837), (28, 167843), (32, 167858), (36, 167876), (37, 167891), (38, 167894), (40, 167906), (50, 167966), (52, 167978), (55, 167990), (56, 168005), (58, 168014), (62, 168038), (68, 168083),

Gene: KSunshine22_285 Start: 174196, Stop: 174684, Start Num: 3

Candidate Starts for KSunshine22_285:

(Start: 2 @174163 has 4 MA's), (3, 174196), (4, 174202), (9, 174244), (12, 174265), (20, 174319), (23, 174367), (27, 174379), (30, 174388), (49, 174502), (52, 174520), (56, 174547), (61, 174583), (63, 174592), (68, 174640),

Gene: LeoJr_308 Start: 175177, Stop: 175710, Start Num: 2

Candidate Starts for LeoJr_308:

(Start: 2 @175177 has 4 MA's), (3, 175210), (8, 175255), (11, 175288), (21, 175351), (22, 175375), (39, 175465), (48, 175528), (59, 175591), (63, 175621), (67, 175663),

Gene: Mimi_277 Start: 169804, Stop: 170316, Start Num: 2

Candidate Starts for Mimi_277:

(Start: 2 @169804 has 4 MA's), (6, 169843), (13, 169906), (16, 169933), (26, 170014), (28, 170020), (32, 170035), (36, 170053), (37, 170068), (38, 170071), (40, 170083), (50, 170143), (52, 170155), (55, 170167), (56, 170182), (58, 170191), (62, 170215), (68, 170260),

Gene: Panchaali_291 Start: 175674, Stop: 176192, Start Num: 2

Candidate Starts for Panchaali_291:

(1, 175590), (Start: 2 @175674 has 4 MA's), (3, 175707), (4, 175713), (12, 175776), (19, 175821), (21, 175833), (23, 175878), (24, 175881), (27, 175890), (31, 175905), (36, 175926), (41, 175959), (44, 175986), (49, 176013), (52, 176031), (59, 176073), (61, 176094), (63, 176103), (65, 176121), (68, 176151),

Gene: Patbob_282 Start: 172392, Stop: 172904, Start Num: 2

Candidate Starts for Patbob_282:

(Start: 2 @172392 has 4 MA's), (6, 172431), (13, 172494), (16, 172521), (26, 172602), (28, 172608), (32, 172623), (36, 172641), (37, 172656), (38, 172659), (40, 172671), (50, 172731), (52, 172743), (55, 172755), (56, 172770), (58, 172779), (62, 172803), (68, 172848),

Gene: Phrampa_277 Start: 173338, Stop: 173850, Start Num: 2

Candidate Starts for Phrampa_277:

(Start: 2 @173338 has 4 MA's), (6, 173374), (13, 173437), (16, 173464), (17, 173467), (28, 173551), (29, 173554), (32, 173566), (36, 173584), (37, 173599), (56, 173713), (58, 173722), (62, 173746), (68, 173791),

Gene: Racecar_280 Start: 170642, Stop: 171154, Start Num: 2

Candidate Starts for Racecar_280:

(Start: 2 @170642 has 4 MA's), (6, 170681), (13, 170744), (16, 170771), (26, 170852), (28, 170858), (32, 170873), (36, 170891), (37, 170906), (38, 170909), (40, 170921), (45, 170954), (50, 170981), (52, 170993), (55, 171005), (56, 171020), (58, 171029), (62, 171053), (64, 171062), (68, 171098),

Gene: ReginaGlobina_306 Start: 175321, Stop: 175854, Start Num: 2

Candidate Starts for ReginaGlobina_306:

(Start: 2 @175321 has 4 MA's), (3, 175354), (8, 175399), (10, 175423), (11, 175432), (21, 175495), (22, 175519), (39, 175609), (48, 175672), (59, 175735), (63, 175765), (67, 175807),

Gene: Rockabye_292 Start: 169497, Stop: 170057, Start Num: 2

Candidate Starts for Rockabye_292:

(Start: 2 @169497 has 4 MA's), (6, 169542), (9, 169593), (14, 169626), (17, 169647), (18, 169653), (19, 169659), (25, 169722), (46, 169842), (53, 169872), (54, 169878), (55, 169881), (58, 169905), (63, 169941), (66, 169983),

Gene: SJReid_305 Start: 170349, Stop: 170912, Start Num: 2

Candidate Starts for SJReid_305:

(Start: 2 @170349 has 4 MA's), (5, 170391), (6, 170394), (7, 170403), (18, 170505), (29, 170586), (34, 170607), (40, 170646), (42, 170652), (43, 170670), (48, 170700), (51, 170715), (52, 170721), (56, 170748), (57, 170751), (60, 170766), (66, 170835), (69, 170847),

Gene: Talia1610_278 Start: 171613, Stop: 172125, Start Num: 2

Candidate Starts for Talia1610_278:

(Start: 2 @171613 has 4 MA's), (6, 171652), (13, 171715), (16, 171742), (26, 171823), (28, 171829), (32, 171844), (36, 171862), (37, 171877), (38, 171880), (40, 171892), (50, 171952), (52, 171964), (55, 171976), (56, 171991), (58, 172000), (62, 172024), (68, 172069),

Gene: WaddleDee_293 Start: 174729, Stop: 175247, Start Num: 2

Candidate Starts for WaddleDee_293:

(Start: 2 @174729 has 4 MA's), (3, 174762), (4, 174768), (9, 174810), (12, 174831), (20, 174885), (23, 174933), (27, 174945), (30, 174954), (44, 175041), (49, 175068), (52, 175086), (56, 175113), (61, 175149), (63, 175158),