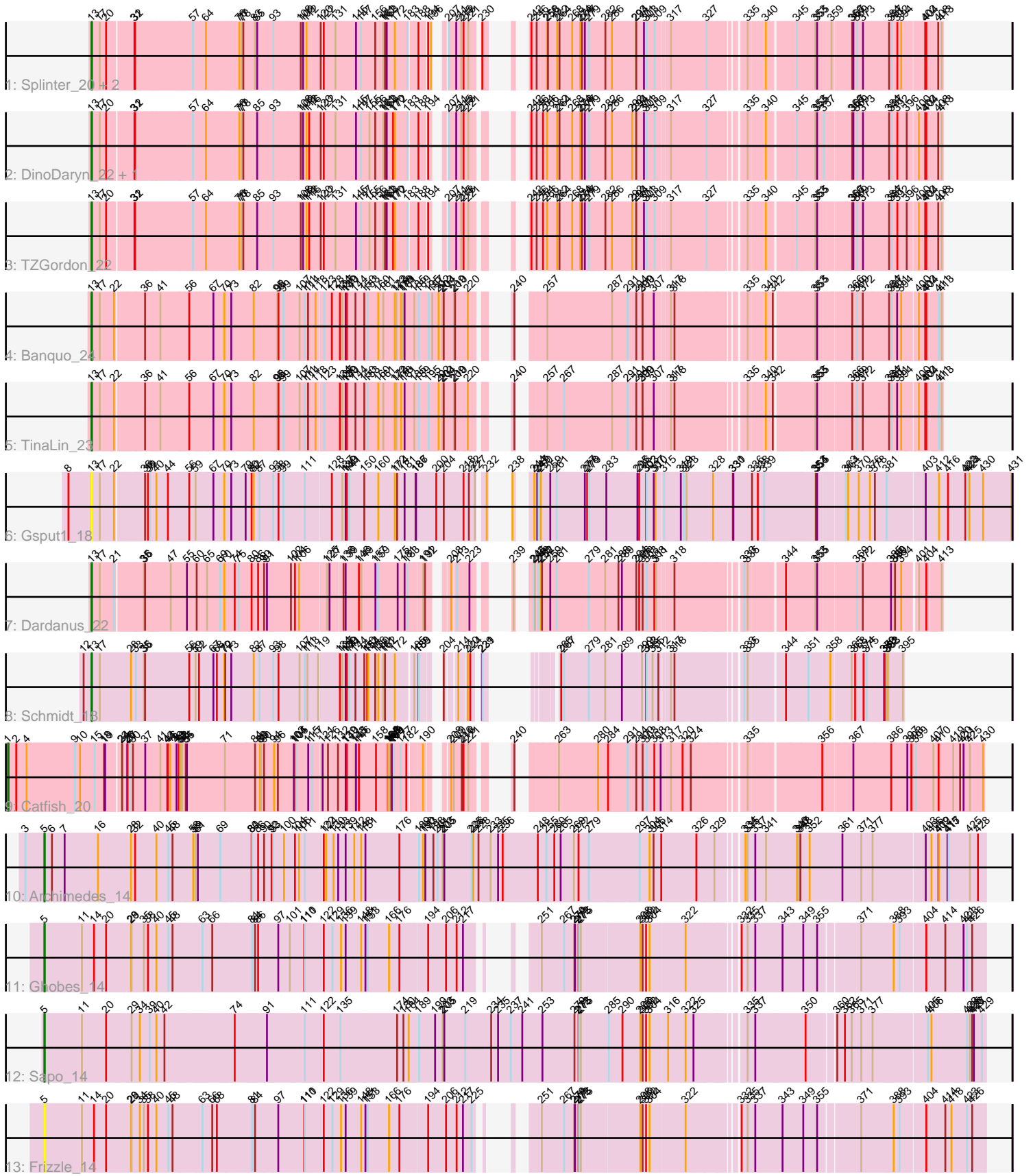


Pham 213071



Note: Tracks are now grouped by subcluster and scaled. Switching in subcluster is indicated by changes in track color. Track scale is now set by default to display the region 30 bp upstream of start 1 to 30 bp downstream of the last possible start. If this default region is judged to be packed too tightly with annotated starts, the track will be further scaled to only show that region of the ORF with annotated starts. This action will be indicated by adding "Zoomed" to the title. For starts, yellow indicates the location of called starts comprised solely of Glimmer/GeneMark auto-annotations, green indicates the location of called starts with at least 1 manual gene annotation.

Pham 213071 Report

This analysis was run 02/22/25 on database version 588.

Pham number 213071 has 16 members, 2 are drafts.

Phages represented in each track:

- Track 1 : Splinter_20, Goib_21, Vendetta_20
- Track 2 : DinoDaryn_22, Huffy_22
- Track 3 : TZGordon_22
- Track 4 : Banquo_24
- Track 5 : TinaLin_23
- Track 6 : Gspu1_18
- Track 7 : Dardanus_22
- Track 8 : Schmidt_18
- Track 9 : Catfish_20
- Track 10 : Archimedes_14
- Track 11 : Ghobes_14
- Track 12 : Sapo_14
- Track 13 : Frizzle_14

Summary of Final Annotations (See graph section above for start numbers):

The start number called the most often in the published annotations is 13, it was called in 10 of the 14 non-draft genes in the pham.

Genes that call this "Most Annotated" start:

- Banquo_24, Dardanus_22, DinoDaryn_22, Goib_21, Gspu1_18, Huffy_22, Schmidt_18, Splinter_20, TZGordon_22, TinaLin_23, Vendetta_20,

Genes that have the "Most Annotated" start but do not call it:

-

Genes that do not have the "Most Annotated" start:

- Archimedes_14, Catfish_20, Frizzle_14, Ghobes_14, Sapo_14,

Summary by start number:

Start 1:

- Found in 1 of 16 (6.2%) of genes in pham
- Manual Annotations of this start: 1 of 14

- Called 100.0% of time when present
- Phage (with cluster) where this start called: Catfish_20 (CU5),

Start 5:

- Found in 4 of 16 (25.0%) of genes in pham
- Manual Annotations of this start: 3 of 14
- Called 100.0% of time when present
- Phage (with cluster) where this start called: Archimedes_14 (DA), Frizzle_14 (DA), Ghobes_14 (DA), Sapo_14 (DA),

Start 13:

- Found in 11 of 16 (68.8%) of genes in pham
- Manual Annotations of this start: 10 of 14
- Called 100.0% of time when present
- Phage (with cluster) where this start called: Banquo_24 (CU1), Dardanus_22 (CU3), DinoDaryn_22 (CU1), Goib_21 (CU1), Gspu1_18 (CU2), Huff_22 (CU1), Schmidt_18 (CU4), Splinter_20 (CU1), TZGordon_22 (CU1), TinaLin_23 (CU1), Vendetta_20 (CU1),

Summary by clusters:

There are 6 clusters represented in this pham: CU5, CU4, CU3, CU2, CU1, DA,

Info for manual annotations of cluster CU1:

- Start number 13 was manually annotated 8 times for cluster CU1.

Info for manual annotations of cluster CU3:

- Start number 13 was manually annotated 1 time for cluster CU3.

Info for manual annotations of cluster CU4:

- Start number 13 was manually annotated 1 time for cluster CU4.

Info for manual annotations of cluster CU5:

- Start number 1 was manually annotated 1 time for cluster CU5.

Info for manual annotations of cluster DA:

- Start number 5 was manually annotated 3 times for cluster DA.

Gene Information:

Gene: Archimedes_14 Start: 9058, Stop: 13707, Start Num: 5

Candidate Starts for Archimedes_14:

(3, 8959), (Start: 5 @9058 has 3 MA's), (6, 9097), (7, 9163), (16, 9337), (28, 9505), (32, 9526), (40, 9631), (45, 9694), (48, 9715), (58, 9820), (59, 9832), (61, 9841), (69, 9952), (80, 10108), (81, 10111), (86, 10141), (90, 10171), (92, 10210), (93, 10219), (100, 10273), (104, 10327), (106, 10348), (111, 10378), (122, 10474), (124, 10486), (130, 10525), (133, 10549), (139, 10588), (142, 10633), (148, 10669), (151, 10690), (176, 10861), (189, 10945), (190, 10966), (193, 10978), (198, 11020), (201, 11041), (203, 11068), (205, 11077), (225, 11218), (226, 11227), (228, 11254), (233, 11317), (235, 11356), (236, 11380), (248, 11563), (255, 11608), (260, 11641), (265, 11671), (269, 11737), (272, 11761), (279, 11815), (297, 12073), (304, 12124), (306, 12145), (314, 12184), (326, 12358), (329,

12433), (334, 12529), (335, 12535), (337, 12562), (341, 12616), (346, 12763), (347, 12772), (348, 12781), (352, 12829), (361, 13000), (371, 13090), (377, 13144), (403, 13405), (406, 13435), (409, 13471), (412, 13474), (415, 13516), (417, 13522), (425, 13627), (428, 13669),

Gene: Banquo_24 Start: 13267, Stop: 16992, Start Num: 13

Candidate Starts for Banquo_24:

(Start: 13 @13267 has 10 MA's), (17, 13309), (22, 13375), (36, 13510), (41, 13588), (56, 13735), (67, 13852), (70, 13906), (73, 13939), (82, 14053), (95, 14170), (98, 14176), (99, 14200), (107, 14284), (111, 14311), (114, 14326), (118, 14365), (123, 14398), (128, 14431), (134, 14473), (137, 14482), (139, 14497), (140, 14503), (144, 14548), (150, 14593), (153, 14611), (160, 14665), (161, 14689), (172, 14749), (173, 14758), (178, 14776), (179, 14785), (181, 14794), (185, 14845), (189, 14869), (195, 14920), (197, 14938), (202, 14971), (203, 14992), (204, 14998), (209, 15049), (210, 15055), (220, 15118), (240, 15202), (257, 15292), (287, 15610), (291, 15685), (294, 15730), (299, 15757), (300, 15760), (307, 15814), (317, 15868), (318, 15886), (335, 16162), (340, 16237), (342, 16267), (353, 16438), (355, 16447), (366, 16591), (369, 16612), (372, 16636), (384, 16753), (387, 16765), (391, 16792), (394, 16810), (400, 16885), (402, 16912), (404, 16918), (411, 16972), (413, 16987),

Gene: Catfish_20 Start: 13330, Stop: 17619, Start Num: 1

Candidate Starts for Catfish_20:

(Start: 1 @13330 has 1 MA's), (2, 13372), (4, 13426), (9, 13678), (10, 13702), (15, 13777), (18, 13819), (19, 13825), (23, 13879), (24, 13882), (25, 13903), (26, 13906), (27, 13915), (30, 13933), (37, 13996), (41, 14074), (43, 14110), (44, 14113), (46, 14125), (49, 14155), (50, 14167), (51, 14173), (52, 14176), (53, 14182), (54, 14200), (55, 14206), (71, 14386), (84, 14536), (88, 14560), (89, 14566), (90, 14581), (94, 14632), (96, 14650), (103, 14725), (104, 14728), (105, 14734), (115, 14794), (117, 14812), (121, 14857), (126, 14878), (132, 14929), (139, 14959), (140, 14965), (143, 15001), (145, 15007), (146, 15022), (158, 15106), (164, 15166), (165, 15169), (166, 15172), (167, 15178), (168, 15184), (169, 15190), (171, 15196), (177, 15232), (182, 15259), (190, 15316), (208, 15376), (209, 15388), (216, 15427), (218, 15436), (221, 15460), (240, 15541), (263, 15682), (280, 15886), (284, 15934), (291, 16024), (294, 16069), (300, 16099), (303, 16120), (308, 16156), (313, 16180), (317, 16207), (320, 16261), (324, 16300), (335, 16501), (356, 16819), (367, 16951), (386, 17146), (397, 17227), (398, 17248), (399, 17272), (407, 17362), (410, 17389), (419, 17464), (420, 17500), (421, 17512), (425, 17545), (430, 17614),

Gene: Dardanus_22 Start: 12248, Stop: 15838, Start Num: 13

Candidate Starts for Dardanus_22:

(Start: 13 @12248 has 10 MA's), (17, 12290), (21, 12356), (35, 12485), (36, 12491), (47, 12623), (55, 12707), (60, 12758), (65, 12812), (69, 12881), (70, 12902), (74, 12950), (75, 12971), (80, 13037), (86, 13070), (90, 13100), (91, 13115), (102, 13238), (104, 13256), (106, 13277), (125, 13403), (127, 13415), (138, 13469), (139, 13478), (146, 13541), (149, 13553), (157, 13619), (159, 13631), (175, 13727), (181, 13760), (183, 13775), (191, 13832), (192, 13841), (208, 13901), (213, 13919), (223, 13979), (239, 14042), (243, 14066), (245, 14072), (249, 14090), (250, 14102), (252, 14108), (259, 14150), (261, 14183), (279, 14348), (281, 14426), (288, 14495), (289, 14513), (294, 14579), (296, 14594), (300, 14609), (303, 14630), (308, 14666), (311, 14675), (318, 14735), (333, 14999), (335, 15011), (344, 15158), (353, 15290), (355, 15299), (369, 15464), (372, 15488), (385, 15614), (389, 15632), (390, 15635), (394, 15662), (401, 15731), (404, 15764), (413, 15833),

Gene: DinoDaryn_22 Start: 12409, Stop: 15867, Start Num: 13

Candidate Starts for DinoDaryn_22:

(Start: 13 @12409 has 10 MA's), (17, 12451), (20, 12484), (31, 12589), (32, 12592), (57, 12877), (64, 12928), (76, 13084), (77, 13096), (78, 13105), (85, 13171), (93, 13252), (108, 13381), (109, 13390), (112, 13408), (116, 13420), (120, 13468), (122, 13483), (131, 13531), (145, 13618), (147, 13642), (155, 13681), (156, 13705), (161, 13741), (162, 13750), (163, 13759), (170, 13792), (172, 13801), (183, 13858), (188, 13885), (194, 13915), (207, 13948), (211, 13984), (215, 14008), (218, 14020),

(221, 14044), (242, 14137), (246, 14164), (254, 14197), (256, 14218), (262, 14260), (264, 14272), (268, 14335), (274, 14368), (276, 14377), (277, 14392), (279, 14410), (282, 14488), (286, 14515), (292, 14614), (293, 14632), (294, 14635), (301, 14668), (303, 14677), (309, 14713), (317, 14761), (327, 14920), (335, 15055), (340, 15130), (345, 15229), (353, 15325), (355, 15334), (357, 15361), (366, 15466), (367, 15472), (369, 15487), (373, 15511), (384, 15628), (387, 15640), (392, 15667), (396, 15712), (400, 15760), (402, 15787), (404, 15793), (408, 15847), (413, 15862),

Gene: Frizzle_14 Start: 9174, Stop: 13496, Start Num: 5

Candidate Starts for Frizzle_14:

(Start: 5 @9174 has 3 MA's), (11, 9369), (14, 9432), (20, 9495), (28, 9621), (29, 9624), (34, 9663), (35, 9684), (38, 9705), (40, 9747), (45, 9810), (48, 9831), (63, 9978), (66, 10026), (68, 10050), (81, 10227), (84, 10242), (97, 10359), (110, 10491), (111, 10494), (122, 10590), (129, 10635), (136, 10680), (139, 10704), (148, 10785), (151, 10806), (153, 10818), (166, 10929), (176, 10977), (194, 11109), (206, 11202), (212, 11256), (217, 11289), (225, 11334), (251, 11439), (267, 11541), (270, 11595), (271, 11598), (272, 11616), (273, 11619), (275, 11628), (298, 11928), (300, 11937), (302, 11955), (304, 11973), (322, 12147), (332, 12351), (335, 12375), (337, 12402), (343, 12540), (349, 12630), (355, 12702), (371, 12885), (388, 13047), (393, 13077), (404, 13203), (414, 13296), (418, 13323), (423, 13401), (426, 13428),

Gene: Ghobes_14 Start: 9172, Stop: 13494, Start Num: 5

Candidate Starts for Ghobes_14:

(Start: 5 @9172 has 3 MA's), (11, 9367), (14, 9430), (20, 9493), (28, 9619), (29, 9622), (35, 9682), (38, 9703), (40, 9745), (45, 9808), (48, 9829), (63, 9976), (66, 10024), (81, 10225), (84, 10240), (86, 10255), (97, 10357), (101, 10417), (110, 10489), (111, 10492), (122, 10588), (129, 10633), (136, 10678), (139, 10702), (148, 10783), (151, 10804), (153, 10816), (166, 10927), (176, 10975), (194, 11107), (206, 11200), (212, 11254), (217, 11287), (251, 11437), (267, 11539), (270, 11593), (271, 11596), (272, 11614), (273, 11617), (275, 11626), (298, 11926), (300, 11935), (302, 11953), (304, 11971), (322, 12145), (332, 12349), (335, 12373), (337, 12400), (343, 12538), (349, 12628), (355, 12700), (371, 12883), (388, 13045), (393, 13075), (404, 13201), (414, 13294), (421, 13381), (423, 13399), (426, 13426),

Gene: Goib_21 Start: 12184, Stop: 15645, Start Num: 13

Candidate Starts for Goib_21:

(Start: 13 @12184 has 10 MA's), (17, 12226), (20, 12259), (31, 12364), (32, 12367), (57, 12652), (64, 12703), (76, 12859), (77, 12871), (78, 12880), (83, 12934), (85, 12946), (93, 13027), (108, 13156), (109, 13165), (112, 13183), (120, 13243), (122, 13258), (131, 13306), (145, 13393), (147, 13417), (156, 13480), (161, 13516), (162, 13525), (163, 13534), (172, 13576), (183, 13633), (188, 13660), (194, 13690), (196, 13705), (207, 13723), (211, 13759), (215, 13783), (218, 13795), (221, 13819), (230, 13858), (242, 13912), (246, 13939), (256, 13993), (258, 13996), (262, 14035), (264, 14047), (268, 14110), (274, 14143), (276, 14152), (277, 14167), (279, 14185), (282, 14263), (286, 14290), (293, 14407), (294, 14410), (301, 14443), (303, 14452), (309, 14488), (317, 14536), (327, 14695), (335, 14830), (340, 14905), (345, 15007), (353, 15103), (355, 15112), (359, 15169), (366, 15244), (367, 15250), (369, 15265), (373, 15289), (384, 15406), (387, 15418), (392, 15445), (394, 15463), (402, 15565), (404, 15571), (408, 15625), (413, 15640),

Gene: Gspu1_18 Start: 10609, Stop: 14904, Start Num: 13

Candidate Starts for Gspu1_18:

(8, 10492), (Start: 13 @10609 has 10 MA's), (17, 10651), (22, 10717), (36, 10852), (38, 10867), (39, 10876), (40, 10909), (44, 10969), (56, 11077), (59, 11110), (67, 11194), (70, 11248), (73, 11281), (79, 11356), (80, 11386), (82, 11395), (87, 11422), (93, 11494), (98, 11518), (99, 11542), (111, 11653), (128, 11773), (137, 11824), (139, 11839), (140, 11845), (141, 11857), (150, 11935), (160, 12007), (172, 12091), (174, 12103), (181, 12136), (186, 12193), (187, 12196), (200, 12301), (204, 12340), (218, 12442), (222, 12469), (227, 12493), (232, 12520), (238, 12526), (244, 12559), (247, 12574),

(249, 12580), (250, 12592), (259, 12640), (261, 12673), (277, 12817), (278, 12829), (279, 12838), (283, 12922), (295, 13069), (296, 13078), (302, 13111), (303, 13114), (307, 13147), (310, 13156), (315, 13189), (319, 13270), (321, 13285), (323, 13300), (328, 13438), (330, 13540), (331, 13543), (336, 13639), (338, 13669), (339, 13702), (353, 13951), (354, 13954), (355, 13960), (363, 14080), (364, 14092), (370, 14143), (376, 14191), (378, 14215), (381, 14275), (403, 14461), (412, 14530), (416, 14575), (422, 14659), (423, 14668), (424, 14680), (430, 14752), (431, 14899),

Gene: Huffy_22 Start: 12409, Stop: 15867, Start Num: 13

Candidate Starts for Huffy_22:

(Start: 13 @12409 has 10 MA's), (17, 12451), (20, 12484), (31, 12589), (32, 12592), (57, 12877), (64, 12928), (76, 13084), (77, 13096), (78, 13105), (85, 13171), (93, 13252), (108, 13381), (109, 13390), (112, 13408), (116, 13420), (120, 13468), (122, 13483), (131, 13531), (145, 13618), (147, 13642), (155, 13681), (156, 13705), (161, 13741), (162, 13750), (163, 13759), (170, 13792), (172, 13801), (183, 13858), (188, 13885), (194, 13915), (207, 13948), (211, 13984), (215, 14008), (218, 14020), (221, 14044), (242, 14137), (246, 14164), (254, 14197), (256, 14218), (262, 14260), (264, 14272), (268, 14335), (274, 14368), (276, 14377), (277, 14392), (279, 14410), (282, 14488), (286, 14515), (292, 14614), (293, 14632), (294, 14635), (301, 14668), (303, 14677), (309, 14713), (317, 14761), (327, 14920), (335, 15055), (340, 15130), (345, 15229), (353, 15325), (355, 15334), (357, 15361), (366, 15466), (367, 15472), (369, 15487), (373, 15511), (384, 15628), (387, 15640), (392, 15667), (396, 15712), (400, 15760), (402, 15787), (404, 15793), (408, 15847), (413, 15862),

Gene: Sapo_14 Start: 9155, Stop: 13762, Start Num: 5

Candidate Starts for Sapo_14:

(Start: 5 @9155 has 3 MA's), (11, 9350), (20, 9476), (29, 9605), (34, 9644), (39, 9695), (40, 9728), (42, 9770), (74, 10118), (91, 10283), (111, 10475), (122, 10571), (135, 10658), (174, 10952), (180, 10979), (184, 11006), (189, 11042), (199, 11126), (203, 11165), (205, 11174), (219, 11282), (234, 11417), (235, 11453), (237, 11519), (241, 11579), (253, 11684), (270, 11837), (272, 11858), (273, 11861), (275, 11870), (285, 12005), (290, 12077), (298, 12170), (300, 12179), (302, 12197), (304, 12215), (316, 12302), (322, 12389), (325, 12425), (335, 12617), (337, 12644), (350, 12902), (360, 13037), (362, 13073), (365, 13103), (371, 13148), (377, 13202), (405, 13475), (406, 13493), (423, 13664), (425, 13679), (426, 13691), (427, 13700), (429, 13742),

Gene: Schmidt_18 Start: 10553, Stop: 13858, Start Num: 13

Candidate Starts for Schmidt_18:

(12, 10511), (Start: 13 @10553 has 10 MA's), (17, 10595), (28, 10739), (33, 10763), (35, 10802), (36, 10808), (56, 11033), (59, 11066), (62, 11081), (67, 11150), (68, 11168), (70, 11204), (72, 11207), (73, 11237), (82, 11351), (87, 11378), (93, 11450), (98, 11474), (107, 11582), (111, 11609), (113, 11621), (119, 11675), (134, 11771), (137, 11780), (139, 11795), (140, 11801), (141, 11813), (144, 11846), (150, 11891), (152, 11906), (154, 11912), (156, 11948), (160, 11963), (161, 11987), (162, 11996), (172, 12038), (185, 12095), (188, 12107), (189, 12110), (204, 12164), (214, 12200), (220, 12236), (224, 12248), (229, 12260), (231, 12263), (266, 12362), (267, 12377), (279, 12506), (281, 12584), (289, 12671), (299, 12773), (302, 12794), (303, 12797), (305, 12824), (312, 12854), (317, 12893), (318, 12911), (333, 13175), (335, 13187), (344, 13331), (351, 13424), (358, 13520), (365, 13613), (368, 13631), (374, 13667), (375, 13682), (379, 13763), (380, 13766), (382, 13778), (383, 13784), (395, 13853),

Gene: Splinter_20 Start: 12184, Stop: 15645, Start Num: 13

Candidate Starts for Splinter_20:

(Start: 13 @12184 has 10 MA's), (17, 12226), (20, 12259), (31, 12364), (32, 12367), (57, 12652), (64, 12703), (76, 12859), (77, 12871), (78, 12880), (83, 12934), (85, 12946), (93, 13027), (108, 13156), (109, 13165), (112, 13183), (120, 13243), (122, 13258), (131, 13306), (145, 13393), (147, 13417), (156, 13480), (161, 13516), (162, 13525), (163, 13534), (172, 13576), (183, 13633), (188, 13660), (194, 13690), (196, 13705), (207, 13723), (211, 13759), (215, 13783), (218, 13795), (221, 13819),

(230, 13858), (242, 13912), (246, 13939), (256, 13993), (258, 13996), (262, 14035), (264, 14047), (268, 14110), (274, 14143), (276, 14152), (277, 14167), (279, 14185), (282, 14263), (286, 14290), (293, 14407), (294, 14410), (301, 14443), (303, 14452), (309, 14488), (317, 14536), (327, 14695), (335, 14830), (340, 14905), (345, 15007), (353, 15103), (355, 15112), (359, 15169), (366, 15244), (367, 15250), (369, 15265), (373, 15289), (384, 15406), (387, 15418), (392, 15445), (394, 15463), (402, 15565), (404, 15571), (408, 15625), (413, 15640),

Gene: TZGordon_22 Start: 12326, Stop: 15784, Start Num: 13

Candidate Starts for TZGordon_22:

(Start: 13 @12326 has 10 MA's), (17, 12368), (20, 12401), (31, 12506), (32, 12509), (57, 12794), (64, 12845), (76, 13001), (77, 13013), (78, 13022), (85, 13088), (93, 13169), (108, 13298), (109, 13307), (112, 13325), (116, 13337), (120, 13385), (122, 13400), (131, 13448), (145, 13535), (147, 13559), (155, 13598), (156, 13622), (161, 13658), (162, 13667), (163, 13676), (170, 13709), (172, 13718), (183, 13775), (188, 13802), (194, 13832), (207, 13865), (211, 13901), (215, 13925), (218, 13937), (221, 13961), (242, 14054), (246, 14081), (254, 14114), (256, 14135), (262, 14177), (264, 14189), (268, 14252), (274, 14285), (276, 14294), (277, 14309), (279, 14327), (282, 14405), (286, 14432), (292, 14531), (293, 14549), (294, 14552), (301, 14585), (303, 14594), (309, 14630), (317, 14678), (327, 14837), (335, 14972), (340, 15047), (345, 15146), (353, 15242), (355, 15251), (366, 15383), (367, 15389), (369, 15404), (373, 15428), (384, 15545), (387, 15557), (392, 15584), (396, 15629), (400, 15677), (402, 15704), (404, 15710), (408, 15764), (413, 15779),

Gene: TinaLin_23 Start: 12891, Stop: 16616, Start Num: 13

Candidate Starts for TinaLin_23:

(Start: 13 @12891 has 10 MA's), (17, 12933), (22, 12999), (36, 13134), (41, 13212), (56, 13359), (67, 13476), (70, 13530), (73, 13563), (82, 13677), (95, 13794), (98, 13800), (99, 13824), (107, 13908), (111, 13935), (114, 13950), (118, 13989), (123, 14022), (134, 14097), (137, 14106), (139, 14121), (140, 14127), (144, 14172), (150, 14217), (153, 14235), (160, 14289), (161, 14313), (172, 14373), (173, 14382), (178, 14400), (181, 14418), (185, 14469), (189, 14493), (195, 14544), (202, 14595), (203, 14616), (204, 14622), (209, 14673), (210, 14679), (220, 14742), (240, 14826), (257, 14916), (267, 14994), (287, 15234), (291, 15309), (294, 15354), (299, 15381), (300, 15384), (307, 15438), (317, 15492), (318, 15510), (335, 15786), (340, 15861), (342, 15891), (353, 16062), (355, 16071), (366, 16215), (369, 16236), (372, 16260), (384, 16377), (387, 16389), (391, 16416), (394, 16434), (400, 16509), (402, 16536), (404, 16542), (411, 16596), (413, 16611),

Gene: Vendetta_20 Start: 12184, Stop: 15645, Start Num: 13

Candidate Starts for Vendetta_20:

(Start: 13 @12184 has 10 MA's), (17, 12226), (20, 12259), (31, 12364), (32, 12367), (57, 12652), (64, 12703), (76, 12859), (77, 12871), (78, 12880), (83, 12934), (85, 12946), (93, 13027), (108, 13156), (109, 13165), (112, 13183), (120, 13243), (122, 13258), (131, 13306), (145, 13393), (147, 13417), (156, 13480), (161, 13516), (162, 13525), (163, 13534), (172, 13576), (183, 13633), (188, 13660), (194, 13690), (196, 13705), (207, 13723), (211, 13759), (215, 13783), (218, 13795), (221, 13819), (230, 13858), (242, 13912), (246, 13939), (256, 13993), (258, 13996), (262, 14035), (264, 14047), (268, 14110), (274, 14143), (276, 14152), (277, 14167), (279, 14185), (282, 14263), (286, 14290), (293, 14407), (294, 14410), (301, 14443), (303, 14452), (309, 14488), (317, 14536), (327, 14695), (335, 14830), (340, 14905), (345, 15007), (353, 15103), (355, 15112), (359, 15169), (366, 15244), (367, 15250), (369, 15265), (373, 15289), (384, 15406), (387, 15418), (392, 15445), (394, 15463), (402, 15565), (404, 15571), (408, 15625), (413, 15640),