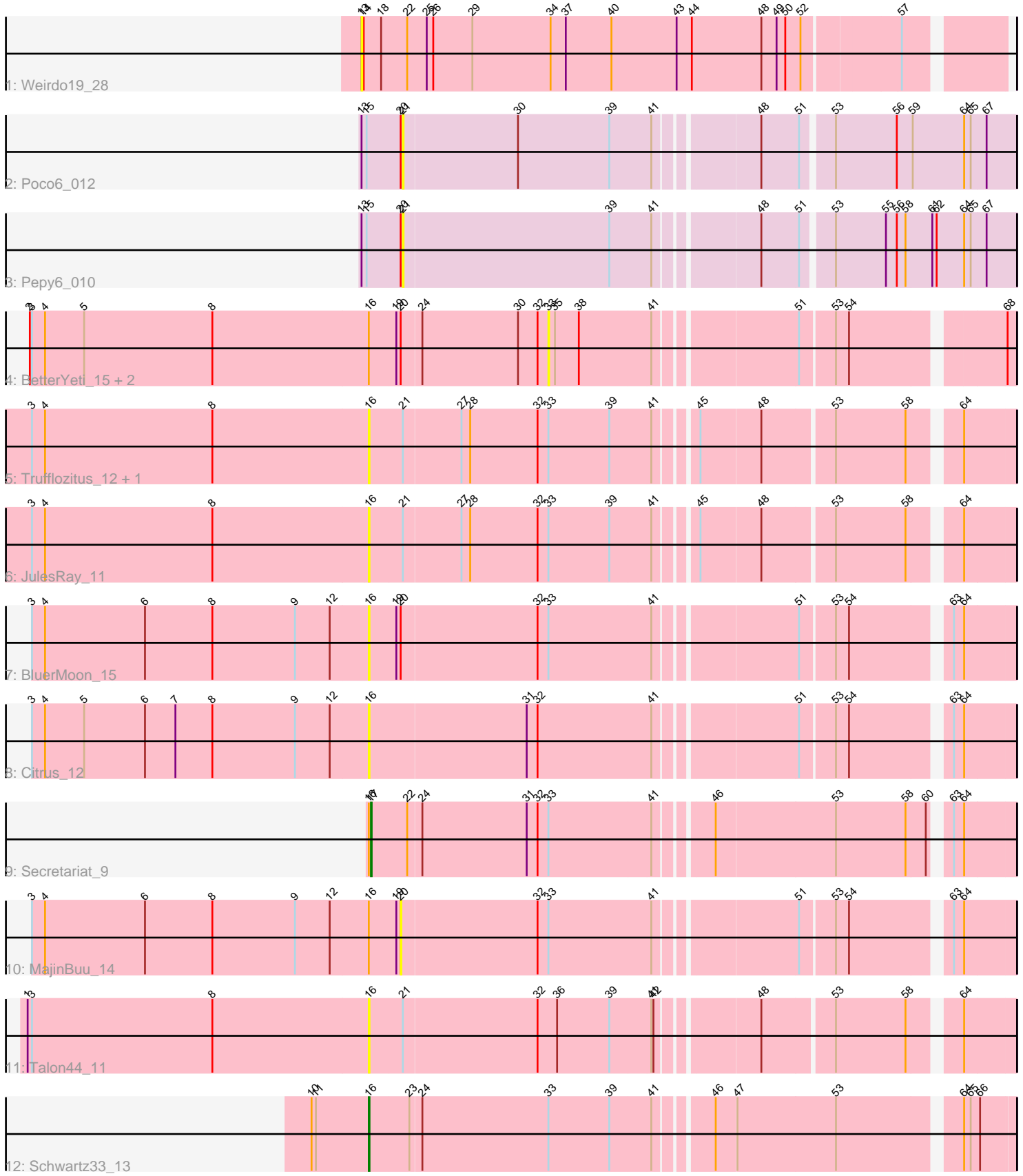


Pham 213081



Note: Tracks are now grouped by subcluster and scaled. Switching in subcluster is indicated by changes in track color. Track scale is now set by default to display the region 30 bp upstream of start 1 to 30 bp downstream of the last possible start. If this default region is judged to be packed too tightly with annotated starts, the track will be further scaled to only show that region of the ORF with annotated starts. This action will be indicated by adding "Zoomed" to the title. For starts, yellow indicates the location of called starts comprised solely of Glimmer/GeneMark auto-annotations, green indicates the location of called starts with at least 1 manual gene annotation.

Pham 213081 Report

This analysis was run 02/22/25 on database version 588.

Pham number 213081 has 15 members, 13 are drafts.

Phages represented in each track:

- Track 1 : Weirdo19_28
- Track 2 : POCO6_012
- Track 3 : PEPY6_010
- Track 4 : BetterYeti_15, GUSICORN_15, ShaggyRogers_16
- Track 5 : Trufflozitus_12, Dancer_11
- Track 6 : JulesRay_11
- Track 7 : BluerMoon_15
- Track 8 : Citrus_12
- Track 9 : Secretariat_9
- Track 10 : MajinBuu_14
- Track 11 : Talon44_11
- Track 12 : Schwartz33_13

Summary of Final Annotations (See graph section above for start numbers):

The start number called the most often in the published annotations is 17, it was called in 1 of the 2 non-draft genes in the pham.

Genes that call this "Most Annotated" start:

- Secretariat_9,

Genes that have the "Most Annotated" start but do not call it:

-

Genes that do not have the "Most Annotated" start:

- BetterYeti_15, BluerMoon_15, Citrus_12, Dancer_11, GUSICORN_15, JulesRay_11, MajinBuu_14, PEPY6_010, POCO6_012, Schwartz33_13, ShaggyRogers_16, Talon44_11, Trufflozitus_12, Weirdo19_28,

Summary by start number:

Start 13:

- Found in 3 of 15 (20.0%) of genes in pham
- No Manual Annotations of this start.

- Called 33.3% of time when present
- Phage (with cluster) where this start called: Weirido19_28 (AH),

Start 16:

- Found in 12 of 15 (80.0%) of genes in pham
- Manual Annotations of this start: 1 of 2
- Called 58.3% of time when present
- Phage (with cluster) where this start called: BluerMoon_15 (DJ), Citrus_12 (DJ), Dancer_11 (DJ), JulesRay_11 (DJ), Schwartz33_13 (DJ), Talon44_11 (DJ), Trufflozitus_12 (DJ),

Start 17:

- Found in 1 of 15 (6.7%) of genes in pham
- Manual Annotations of this start: 1 of 2
- Called 100.0% of time when present
- Phage (with cluster) where this start called: Secretariat_9 (DJ),

Start 20:

- Found in 7 of 15 (46.7%) of genes in pham
- No Manual Annotations of this start.
- Called 14.3% of time when present
- Phage (with cluster) where this start called: MajinBuu_14 (DJ),

Start 21:

- Found in 6 of 15 (40.0%) of genes in pham
- No Manual Annotations of this start.
- Called 33.3% of time when present
- Phage (with cluster) where this start called: Pepy6_010 (CC), Poco6_012 (CC),

Start 33:

- Found in 10 of 15 (66.7%) of genes in pham
- No Manual Annotations of this start.
- Called 30.0% of time when present
- Phage (with cluster) where this start called: BetterYeti_15 (DJ), Gusicorn_15 (DJ), ShaggyRogers_16 (DJ),

Summary by clusters:

There are 3 clusters represented in this pham: CC, AH, DJ,

Info for manual annotations of cluster DJ:

- Start number 16 was manually annotated 1 time for cluster DJ.
- Start number 17 was manually annotated 1 time for cluster DJ.

Gene Information:

Gene: BetterYeti_15 Start: 7148, Stop: 7729, Start Num: 33

Candidate Starts for BetterYeti_15:

(2, 6440), (3, 6443), (4, 6461), (5, 6515), (8, 6692), (Start: 16 @6905 has 1 MA's), (19, 6941), (20, 6947), (24, 6974), (30, 7106), (32, 7133), (33, 7148), (35, 7157), (38, 7190), (41, 7286), (51, 7463), (53, 7508), (54, 7526), (68, 7718),

Gene: BluerMoon_15 Start: 7109, Stop: 7933, Start Num: 16

Candidate Starts for BluerMoon_15:

(3, 6647), (4, 6665), (6, 6803), (8, 6896), (9, 7010), (12, 7058), (Start: 16 @7109 has 1 MA's), (19, 7145), (20, 7151), (32, 7337), (33, 7352), (41, 7490), (51, 7667), (53, 7712), (54, 7730), (63, 7853), (64, 7865),

Gene: Citrus_12 Start: 7112, Stop: 7936, Start Num: 16

Candidate Starts for Citrus_12:

(3, 6650), (4, 6668), (5, 6722), (6, 6806), (7, 6848), (8, 6899), (9, 7013), (12, 7061), (Start: 16 @7112 has 1 MA's), (31, 7325), (32, 7340), (41, 7493), (51, 7670), (53, 7715), (54, 7733), (63, 7856), (64, 7868),

Gene: Dancer_11 Start: 3970, Stop: 4791, Start Num: 16

Candidate Starts for Dancer_11:

(3, 3508), (4, 3526), (8, 3757), (Start: 16 @3970 has 1 MA's), (21, 4015), (27, 4093), (28, 4105), (32, 4198), (33, 4213), (39, 4297), (41, 4351), (45, 4396), (48, 4477), (53, 4570), (58, 4666), (64, 4723),

Gene: Gusicorn_15 Start: 7148, Stop: 7729, Start Num: 33

Candidate Starts for Gusicorn_15:

(2, 6440), (3, 6443), (4, 6461), (5, 6515), (8, 6692), (Start: 16 @6905 has 1 MA's), (19, 6941), (20, 6947), (24, 6974), (30, 7106), (32, 7133), (33, 7148), (35, 7157), (38, 7190), (41, 7286), (51, 7463), (53, 7508), (54, 7526), (68, 7718),

Gene: JulesRay_11 Start: 4264, Stop: 5085, Start Num: 16

Candidate Starts for JulesRay_11:

(3, 3802), (4, 3820), (8, 4051), (Start: 16 @4264 has 1 MA's), (21, 4309), (27, 4387), (28, 4399), (32, 4492), (33, 4507), (39, 4591), (41, 4645), (45, 4690), (48, 4771), (53, 4864), (58, 4960), (64, 5017),

Gene: MajinBuu_14 Start: 7152, Stop: 7934, Start Num: 20

Candidate Starts for MajinBuu_14:

(3, 6648), (4, 6666), (6, 6804), (8, 6897), (9, 7011), (12, 7059), (Start: 16 @7110 has 1 MA's), (19, 7146), (20, 7152), (32, 7338), (33, 7353), (41, 7491), (51, 7668), (53, 7713), (54, 7731), (63, 7854), (64, 7866),

Gene: Pepy6_010 Start: 9009, Stop: 9806, Start Num: 21

Candidate Starts for Pepy6_010:

(13, 8955), (15, 8961), (20, 9006), (21, 9009), (39, 9291), (41, 9345), (48, 9471), (51, 9522), (53, 9561), (55, 9630), (56, 9645), (58, 9657), (61, 9693), (62, 9699), (64, 9735), (65, 9744), (67, 9765),

Gene: Poco6_012 Start: 12440, Stop: 13237, Start Num: 21

Candidate Starts for Poco6_012:

(13, 12386), (15, 12392), (20, 12437), (21, 12440), (30, 12596), (39, 12722), (41, 12776), (48, 12902), (51, 12953), (53, 12992), (56, 13076), (59, 13097), (64, 13166), (65, 13175), (67, 13196),

Gene: Schwartz33_13 Start: 6686, Stop: 7513, Start Num: 16

Candidate Starts for Schwartz33_13:

(10, 6608), (11, 6614), (Start: 16 @6686 has 1 MA's), (23, 6740), (24, 6755), (33, 6929), (39, 7013), (41, 7067), (46, 7133), (47, 7160), (53, 7295), (64, 7448), (65, 7457), (66, 7469),

Gene: Secretariat_9 Start: 4290, Stop: 5117, Start Num: 17

Candidate Starts for Secretariat_9:

(Start: 16 @4287 has 1 MA's), (Start: 17 @4290 has 1 MA's), (22, 4338), (24, 4356), (31, 4500), (32, 4515), (33, 4530), (41, 4668), (46, 4734), (53, 4896), (58, 4992), (60, 5019), (63, 5037), (64, 5049),

Gene: ShaggyRogers_16 Start: 7147, Stop: 7728, Start Num: 33

Candidate Starts for ShaggyRogers_16:

(2, 6439), (3, 6442), (4, 6460), (5, 6514), (8, 6691), (Start: 16 @6904 has 1 MA's), (19, 6940), (20, 6946), (24, 6973), (30, 7105), (32, 7132), (33, 7147), (35, 7156), (38, 7189), (41, 7285), (51, 7462), (53, 7507), (54, 7525), (68, 7717),

Gene: Talon44_11 Start: 4468, Stop: 5289, Start Num: 16

Candidate Starts for Talon44_11:

(1, 4000), (3, 4006), (8, 4255), (Start: 16 @4468 has 1 MA's), (21, 4513), (32, 4696), (36, 4723), (39, 4795), (41, 4849), (42, 4852), (48, 4975), (53, 5068), (58, 5164), (64, 5221),

Gene: Trufflozitus_12 Start: 4264, Stop: 5085, Start Num: 16

Candidate Starts for Trufflozitus_12:

(3, 3802), (4, 3820), (8, 4051), (Start: 16 @4264 has 1 MA's), (21, 4309), (27, 4387), (28, 4399), (32, 4492), (33, 4507), (39, 4591), (41, 4645), (45, 4690), (48, 4771), (53, 4864), (58, 4960), (64, 5017),

Gene: Weirido19_28 Start: 25821, Stop: 26675, Start Num: 13

Candidate Starts for Weirido19_28:

(13, 25821), (14, 25824), (18, 25848), (22, 25884), (25, 25911), (26, 25920), (29, 25974), (34, 26082), (37, 26103), (40, 26166), (43, 26256), (44, 26277), (48, 26373), (49, 26394), (50, 26406), (52, 26427), (57, 26553),