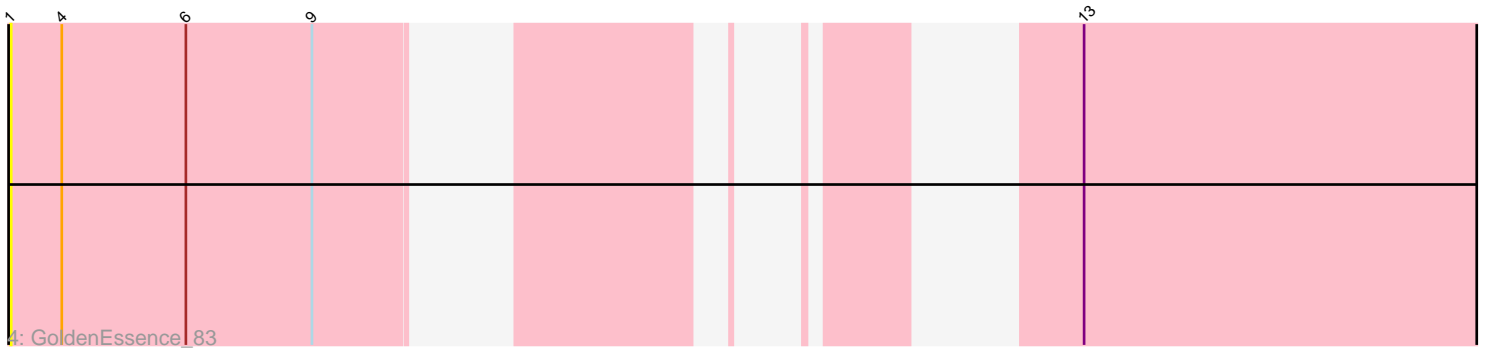
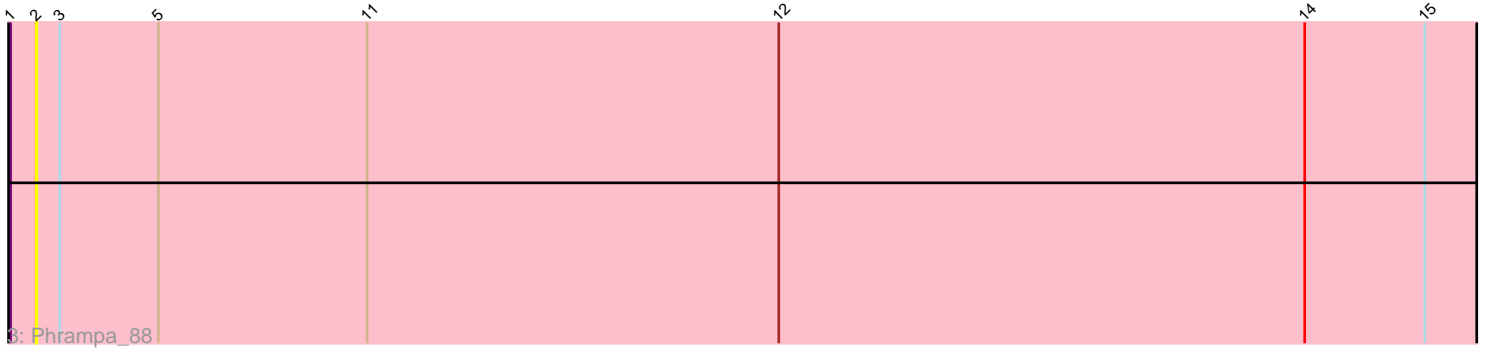
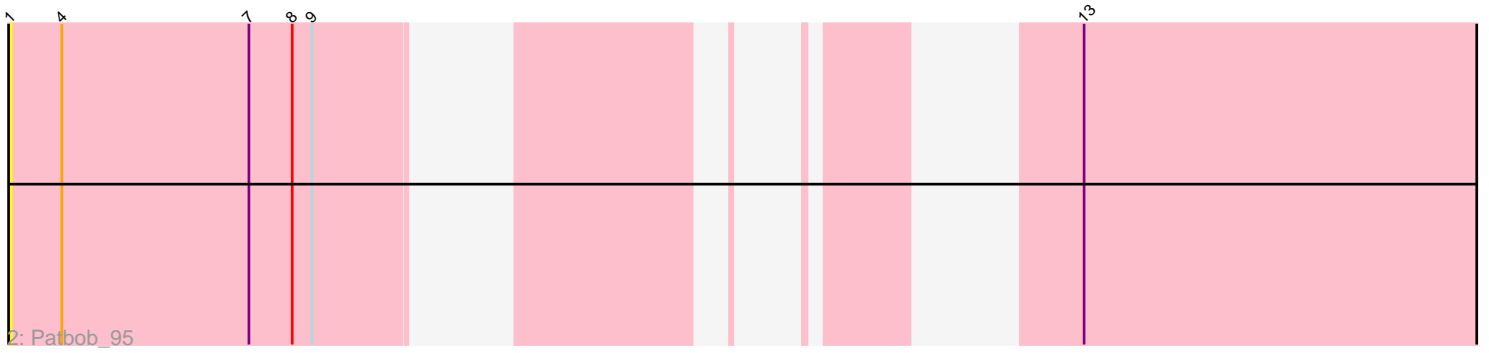
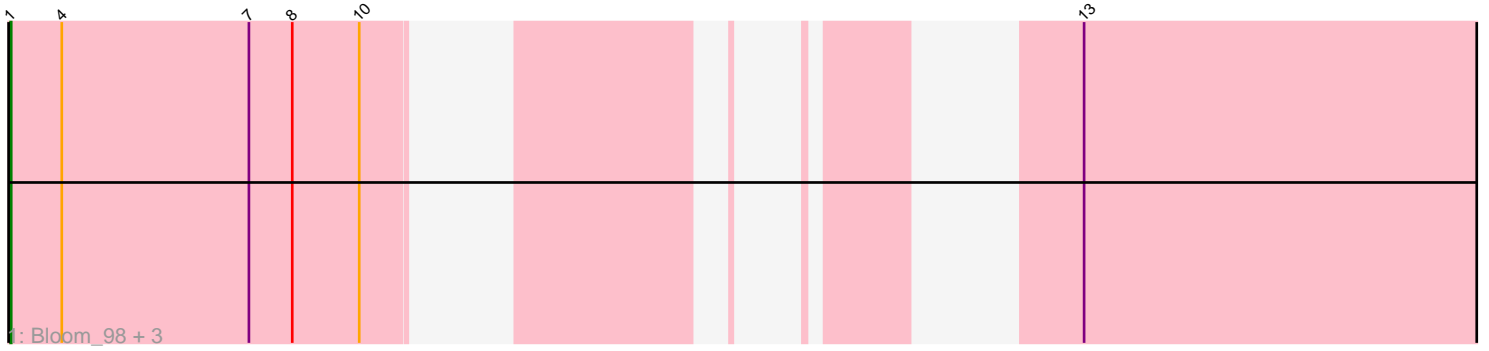


Zoomed Pham 213339



Note: Tracks are now grouped by subcluster and scaled. Switching in subcluster is indicated by changes in track color. Track scale is now set by default to display the region 30 bp upstream of start 1 to 30 bp downstream of the last possible start. If this default region is judged to be packed too tightly with annotated starts, the track will be further scaled to only show that region of the ORF with annotated starts. This action will be indicated by adding "Zoomed" to the title. For starts, yellow indicates the location of called starts comprised solely of Glimmer/GeneMark auto-annotations, green indicates the location of called starts with at least 1 manual gene annotation.

Pham 213339 Report

This analysis was run 02/22/25 on database version 588.

Pham number 213339 has 7 members, 4 are drafts.

Phages represented in each track:

- Track 1 : Bloom_98, Talia1610_94, Mimi_94, Racecar_95
- Track 2 : Patbob_95
- Track 3 : Phrampa_88
- Track 4 : GoldenEssence_83

Summary of Final Annotations (See graph section above for start numbers):

The start number called the most often in the published annotations is 1, it was called in 3 of the 3 non-draft genes in the pham.

Genes that call this "Most Annotated" start:

- Bloom_98, GoldenEssence_83, Mimi_94, Patbob_95, Racecar_95, Talia1610_94,

Genes that have the "Most Annotated" start but do not call it:

- Phrampa_88,

Genes that do not have the "Most Annotated" start:

-

Summary by start number:

Start 1:

- Found in 7 of 7 (100.0%) of genes in pham
- Manual Annotations of this start: 3 of 3
- Called 85.7% of time when present
- Phage (with cluster) where this start called: Bloom_98 (FC), GoldenEssence_83 (FC), Mimi_94 (FC), Patbob_95 (FC), Racecar_95 (FC), Talia1610_94 (FC),

Start 2:

- Found in 1 of 7 (14.3%) of genes in pham
- No Manual Annotations of this start.
- Called 100.0% of time when present
- Phage (with cluster) where this start called: Phrampa_88 (FC),

Summary by clusters:

There is one cluster represented in this pham: FC

Info for manual annotations of cluster FC:

- Start number 1 was manually annotated 3 times for cluster FC.

Gene Information:

Gene: Bloom_98 Start: 63725, Stop: 76525, Start Num: 1

Candidate Starts for Bloom_98:

(Start: 1 @63725 has 3 MA's), (4, 63803), (7, 64088), (8, 64154), (10, 64256), (13, 64835), (18, 65864), (19, 65924), (20, 66173), (22, 66449), (31, 67709), (33, 67916), (34, 67919), (35, 67940), (38, 68291), (39, 68408), (43, 68483), (50, 68855), (51, 68978), (53, 69338), (55, 69461), (56, 69524), (57, 69533), (58, 69551), (59, 69584), (62, 69977), (63, 70148), (65, 70199), (66, 70220), (67, 70241), (69, 70328), (83, 70634), (85, 71054), (86, 71159), (91, 71639), (92, 71669), (93, 71954), (94, 72044), (95, 72101), (97, 72308), (106, 72512), (111, 72650), (112, 72773), (114, 73058), (116, 73433), (117, 73439), (118, 73448), (120, 73514), (122, 73535), (125, 73817), (129, 74042), (131, 74342), (136, 75182), (137, 75236), (138, 75239), (142, 75413), (145, 75518), (146, 75533), (147, 75536), (148, 75551), (149, 75569), (150, 75575), (151, 75623), (153, 75641), (157, 75932), (160, 76064), (162, 76202), (169, 76337), (170, 76352),

Gene: GoldenEssence_83 Start: 57521, Stop: 70312, Start Num: 1

Candidate Starts for GoldenEssence_83:

(Start: 1 @57521 has 3 MA's), (4, 57599), (6, 57788), (9, 57980), (13, 58631), (18, 59660), (19, 59720), (20, 59969), (22, 60245), (24, 60854), (31, 61505), (33, 61712), (34, 61715), (36, 61790), (39, 62204), (43, 62279), (45, 62516), (46, 62564), (50, 62648), (51, 62771), (53, 63131), (55, 63254), (57, 63326), (58, 63344), (59, 63377), (62, 63770), (64, 63953), (66, 64013), (67, 64034), (69, 64121), (84, 64592), (86, 64952), (87, 64967), (90, 65222), (92, 65492), (93, 65777), (94, 65867), (96, 65927), (97, 66131), (111, 66473), (112, 66596), (113, 66851), (114, 66881), (115, 67106), (116, 67256), (117, 67262), (118, 67271), (120, 67337), (122, 67358), (125, 67640), (129, 67865), (131, 68165), (133, 68420), (134, 68630), (136, 69005), (140, 69086), (142, 69224), (146, 69344), (149, 69380), (150, 69386), (152, 69437), (153, 69449), (154, 69659), (158, 69746), (159, 69839), (166, 70031),

Gene: Mimi_94 Start: 63072, Stop: 75872, Start Num: 1

Candidate Starts for Mimi_94:

(Start: 1 @63072 has 3 MA's), (4, 63150), (7, 63435), (8, 63501), (10, 63603), (13, 64182), (18, 65211), (19, 65271), (20, 65520), (22, 65796), (31, 67056), (33, 67263), (34, 67266), (35, 67287), (38, 67638), (39, 67755), (43, 67830), (50, 68202), (51, 68325), (53, 68685), (55, 68808), (56, 68871), (57, 68880), (58, 68898), (59, 68931), (62, 69324), (63, 69495), (65, 69546), (66, 69567), (67, 69588), (69, 69675), (83, 69981), (85, 70401), (86, 70506), (91, 70986), (92, 71016), (93, 71301), (94, 71391), (95, 71448), (97, 71655), (106, 71859), (111, 71997), (112, 72120), (114, 72405), (116, 72780), (117, 72786), (118, 72795), (120, 72861), (122, 72882), (125, 73164), (129, 73389), (131, 73689), (136, 74529), (137, 74583), (138, 74586), (142, 74760), (145, 74865), (146, 74880), (147, 74883), (148, 74898), (149, 74916), (150, 74922), (151, 74970), (153, 74988), (157, 75279), (160, 75411), (162, 75549), (169, 75684), (170, 75699),

Gene: Patbob_95 Start: 63944, Stop: 76600, Start Num: 1

Candidate Starts for Patbob_95:

(Start: 1 @63944 has 3 MA's), (4, 64022), (7, 64307), (8, 64373), (9, 64403), (13, 65054), (16, 65807), (18, 66083), (19, 66143), (20, 66392), (21, 66479), (24, 67277), (31, 67928), (33, 68135), (34, 68138),

(35, 68159), (38, 68510), (39, 68627), (43, 68702), (50, 69074), (51, 69197), (53, 69557), (55, 69680), (57, 69752), (58, 69770), (59, 69803), (62, 70196), (64, 70379), (66, 70439), (67, 70460), (69, 70547), (82, 70778), (83, 70853), (84, 71018), (86, 71378), (92, 71888), (98, 72515), (99, 72521), (101, 72563), (102, 72587), (103, 72590), (107, 72683), (108, 72695), (109, 72731), (110, 72755), (112, 72893), (114, 73178), (119, 73580), (127, 74018), (128, 74030), (129, 74153), (131, 74453), (132, 74498), (134, 74918), (136, 75293), (142, 75512), (144, 75581), (146, 75632), (149, 75668), (153, 75737), (155, 75953), (158, 76034), (166, 76319),

Gene: Phrampa_88 Start: 61282, Stop: 78105, Start Num: 2

Candidate Starts for Phrampa_88:

(Start: 1 @61243 has 3 MA's), (2, 61282), (3, 61318), (5, 61468), (11, 61786), (12, 62413), (14, 63214), (15, 63397), (17, 63799), (23, 64750), (25, 65575), (26, 65722), (27, 65959), (28, 66328), (29, 66373), (30, 66376), (32, 66742), (33, 66787), (37, 67033), (40, 67321), (41, 67342), (42, 67363), (44, 67477), (47, 67720), (48, 67738), (49, 67741), (52, 68113), (54, 68440), (60, 68923), (61, 68992), (66, 69343), (67, 69364), (68, 69376), (70, 69454), (71, 69712), (72, 69970), (73, 70027), (74, 70054), (75, 70057), (76, 70078), (77, 70171), (78, 70237), (79, 70306), (80, 70357), (81, 70555), (88, 71620), (89, 71650), (92, 72415), (98, 73042), (99, 73048), (100, 73081), (101, 73090), (102, 73114), (104, 73132), (105, 73144), (110, 73282), (112, 73420), (116, 74080), (117, 74086), (118, 74095), (120, 74161), (121, 74164), (122, 74182), (123, 74251), (124, 74299), (125, 74464), (126, 74551), (130, 74839), (135, 75526), (139, 75931), (141, 75964), (143, 76099), (156, 76549), (161, 76822), (163, 76933), (164, 76942), (165, 76948), (167, 76996), (168, 77032), (169, 77056), (171, 77080), (172, 77125), (173, 77401), (174, 77458), (175, 77638), (176, 78040), (177, 78076), (178, 78100),

Gene: Racecar_95 Start: 63725, Stop: 76525, Start Num: 1

Candidate Starts for Racecar_95:

(Start: 1 @63725 has 3 MA's), (4, 63803), (7, 64088), (8, 64154), (10, 64256), (13, 64835), (18, 65864), (19, 65924), (20, 66173), (22, 66449), (31, 67709), (33, 67916), (34, 67919), (35, 67940), (38, 68291), (39, 68408), (43, 68483), (50, 68855), (51, 68978), (53, 69338), (55, 69461), (56, 69524), (57, 69533), (58, 69551), (59, 69584), (62, 69977), (63, 70148), (65, 70199), (66, 70220), (67, 70241), (69, 70328), (83, 70634), (85, 71054), (86, 71159), (91, 71639), (92, 71669), (93, 71954), (94, 72044), (95, 72101), (97, 72308), (106, 72512), (111, 72650), (112, 72773), (114, 73058), (116, 73433), (117, 73439), (118, 73448), (120, 73514), (122, 73535), (125, 73817), (129, 74042), (131, 74342), (136, 75182), (137, 75236), (138, 75239), (142, 75413), (145, 75518), (146, 75533), (147, 75536), (148, 75551), (149, 75569), (150, 75575), (151, 75623), (153, 75641), (157, 75932), (160, 76064), (162, 76202), (169, 76337), (170, 76352),

Gene: Talia1610_94 Start: 63090, Stop: 75890, Start Num: 1

Candidate Starts for Talia1610_94:

(Start: 1 @63090 has 3 MA's), (4, 63168), (7, 63453), (8, 63519), (10, 63621), (13, 64200), (18, 65229), (19, 65289), (20, 65538), (22, 65814), (31, 67074), (33, 67281), (34, 67284), (35, 67305), (38, 67656), (39, 67773), (43, 67848), (50, 68220), (51, 68343), (53, 68703), (55, 68826), (56, 68889), (57, 68898), (58, 68916), (59, 68949), (62, 69342), (63, 69513), (65, 69564), (66, 69585), (67, 69606), (69, 69693), (83, 69999), (85, 70419), (86, 70524), (91, 71004), (92, 71034), (93, 71319), (94, 71409), (95, 71466), (97, 71673), (106, 71877), (111, 72015), (112, 72138), (114, 72423), (116, 72798), (117, 72804), (118, 72813), (120, 72879), (122, 72900), (125, 73182), (129, 73407), (131, 73707), (136, 74547), (137, 74601), (138, 74604), (142, 74778), (145, 74883), (146, 74898), (147, 74901), (148, 74916), (149, 74934), (150, 74940), (151, 74988), (153, 75006), (157, 75297), (160, 75429), (162, 75567), (169, 75702), (170, 75717),