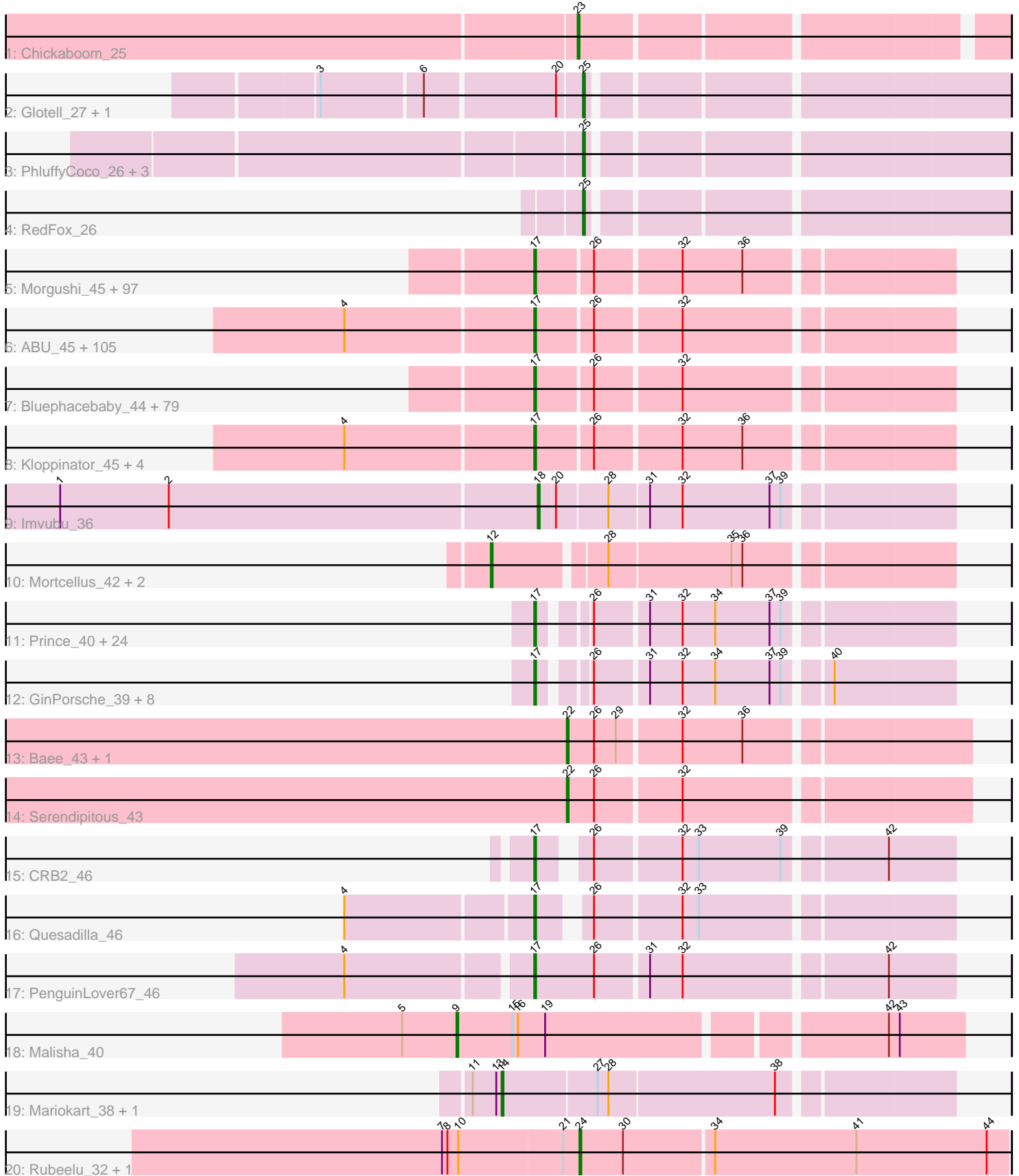


Pham 213909



Note: Tracks are now grouped by subcluster and scaled. Switching in subcluster is indicated by changes in track color. Track scale is now set by default to display the region 30 bp upstream of start 1 to 30 bp downstream of the last possible start. If this default region is judged to be packed too tightly with annotated starts, the track will be further scaled to only show that region of the ORF with annotated starts. This action will be indicated by adding "Zoomed" to the title. For starts, yellow indicates the location of called starts comprised solely of Glimmer/GeneMark auto-annotations, green indicates the location of called starts with at least 1 manual gene annotation.

Pham 213909 Report

This analysis was run 02/22/25 on database version 588.

Pham number 213909 has 346 members, 39 are drafts.

Phages represented in each track:

- Track 1 : Chickaboom_25
- Track 2 : Glotell_27, Leona_25
- Track 3 : PhluffyCoco_26, DanHam62_26, KHumphrey_26, Camara_26
- Track 4 : RedFox_26
- Track 5 : Morgushi_45, MiniBoss_45, Soile_45, Beaglebox_44, Kwadwo_44, Haleema_44, Solosis_44, Jesabah_45, Dice_44, Lulumae_44, Telesworld_44, Emiris_45, Brilliant_45, Cobra_45, Swish_45, Gwennie1_45, Phunky_45, Wallhey_44, Vaishali24_44, JacAttac_45, Orfeu_44, Khan1_45, Ricotta_44, Vortex_45, Mikota_45, KingTut_36, Vaticameos_41, Piglet_0044, Fozzie_44, Apizium_44, CamL_45, MRabcd_44, Puhltonio_45, MrPhizzler_44, Timmi_44, HSavage_45, Maskar_44, Derpp_44, Frankicide_45, TallGrassMM_45, Labeouficaum_44, Cannibal_45, Dione_44, Riverton_44, Samaymay_45, LuckyMarjie_44, DuchessDung_43, Pacifista_44, Cher_44, Nathan_46, RedMaple_44, Murdoc_45, Serpentine_0045, Grand2040_44, KLucky39_45, Simielle_44, Zonia_45, Maru_44, Rimu_47, OSmaximus_45, FluffyNinja_45, Mcshane_44, Yoshand_45, BlackStallion_45, Gareth_44, Kwksand96_44, Banjo_44, Cornbread_45, Iridessa_46, Freya_44, Pherdinand_45, KlimbOn_45, Roy17_45, Ashraf_44, ImtiyazSitla_44, Serendipity_45, Mana_44, Sheila_45, QueenBeane_45, Gyarad_0045, GeneCoco_45, ElvisPhasley_46, PinheadLarry_45, Xavier_44, MelsMeow_44, Longacauda_44, Pinkman_44, Toni_44, TyrionL_44, Childish_44, Newman_45, Hocus_44, Andre_45, Sigman_45, Legolas_44, Phareon_45, Daffy_45, Inverness_45
- Track 6 : ABU_45, TooFast2Furius_47, Spartan300_45, PhrodoBaggins_44, Badfish_45, LasagnaCat_45, DoesntMatter_44, Horchata_45, Scrick_45, LostAndPhound_44, Chute_44, Fang_45, Katniss_45, Orion_45, Keitherie_45, Scoot17C_45, Charles1_45, SassyCat97_44, Megatron_45, Quisquilliae_45, Squiggle_45, IsaacEli_45, PhatCats2014_45, Lulwa_45, Held_45, HenryJackson_44, Harvey_45, Robyn_44, Nyala_44, DaddyDaniels_45, Valjean_45, Olak_44, AltPhacts_45, DonSanchon_44, Gophee_45, Potter_44, HighStump_44, CampRoach_45, LeiMonet_46, Kimbrough_45, ShiVal_45, Lumine_44, TomBombadil_45, Craff_45, CharlieGBrown_44, True_44, Anderson_45, Struggle_44, Fringe_45, Jiraiya_44, EmpTee_45, SirBeauregard_45, Podrick_45, Adriana_45, Mesmerelda_45, Chaelin_45, PG1_45, Megamind20_45, Roscoe_46, Plata_45, Vivaldi_45, Nacho_0045, DeIRivs_44, Giraffe_45, MitKao_45, Numberten_45, Boehler_45, Aelin_44, Inchworm_45, Bishoperium_44, Chah_46, Olive_45, SDcharge11_45, Oline_44, Tomlarah_45, Manad_44, Morty_45, Jiminy_44, Mosaic_44, Selr12_45, ThreeOh3D2_45, Omniscient_45, Windsor_44,

Skippy_45, Schadenfreude_44, Lopsy_44, Coletti_44, Duggie_44, Mutante_44, Crownjwl_45, Trypo_45, ProfessorX_45, Cornobble_44, LeeLot_45, Kikipoo_45, Doddsville_45, Mecca_44, Thunderbird_44, Lego3393_44, Virgeve_44, Chorkpop_45, Durga_45, CheetO_45, LemonSlice_45, Squid_45, Antonia_44
 • Track 7 : Bluephacebaby_44, Hamish_45, PhenghisKhan_44, JangoPhett_45, Eremos_45, AbsoluteMadLad_44, PhrankReynolds_43, Colbert_45, Riggan_45, UAch1_45, FugateOSU_44, Phipps_45, Jillium_44, Slatt_45, Sophia_44, Roliet_45, Phamished_45, Mag7_44, Lasso_45, Tooj_45, Hartsy_45, BlueHusk_45, Mesh1_45, Kahve_44, PhatLouie_45, Daka_46, Oosterbaan_45, YouGoGlencoco_45, Soto_45, Matalotodo_45, Placalicious_44, Zaider_46, Cosmolli16_44, BatteryCK_44, Caspiboi_46, FriarPreacher_44, JDog_44, Haimas_45, DirtJuice_45, Zelda_45, Buckeye_45, Thora_45, Orwigg_44, Hetaeria_45, Phleuron_44, Basato_46, Swiphy_47, Usavi_45, Pipsqueak_45, Melc17_45, Burr_44, KingVeVeVe_45, Veritas_44, Mulan_44, MichaelPhcott_44, Prickles_45, Iridoclysis_45, Magic8_45, Weher20_45, Vista_45, Gwilliam_45, SilverBell_45, OliverWalter_45, Waterdiva_45, Nicole21_45, JakeO_44, Altwerkus_44, Suffolk_45, Dati_45, Chipette_46, Kailash_45, Phergie_44, Schueller_44, Dingo_45, AngelCake_44, Chunky_45, Etaye_45, Surely_45, Virapocalypse_45, Hertubise_45
 • Track 8 : Kloppinator_45, Pops_45, Plmatters_45, UncleHowie_45, Eugenia_45
 • Track 9 : Imvubu_36
 • Track 10 : Mortcellus_42, Bernardo_44, Pipefish_45
 • Track 11 : Prince_40, Zemanar_41, Fortunato_41, Apex_41, Fanaw_39, Nigel_39, Heath_39, Hydro_40, JAMaL_40, VioletZ_41, BobbyK_41, QueenPie_39, Xincheng_39, Austelle_41, Waleliano_40, Lolalove_40, BrownCNA_42, Mudslide_40, RawrgerThat_41, Hangman_40, JaguarMi_40, Mithril_40, Frederick_41, Magpie_39, Cooper_41
 • Track 12 : GinPorsche_39, ChrisnMich_40, Antihero_39, Ahwei_39, Nanao_39, Hally898_39, Lambano_39, Epah_39, Poster_39
 • Track 13 : Bae_43, Rich_42
 • Track 14 : Serendipitous_43
 • Track 15 : CRB2_46
 • Track 16 : Quesadilla_46
 • Track 17 : PenguinLover67_46
 • Track 18 : Malisha_40
 • Track 19 : Mariokart_38, CharlottesWeb_38
 • Track 20 : Rubeelu_32, Butters_32

Summary of Final Annotations (See graph section above for start numbers):

The start number called the most often in the published annotations is 17, it was called in 291 of the 307 non-draft genes in the pham.

Genes that call this "Most Annotated" start:

• ABU_45, AbsoluteMadLad_44, Adriana_45, Aelin_44, Ahwei_39, AltPhacts_45, Altwerkus_44, Anderson_45, Andre_45, AngelCake_44, Antihero_39, Antonia_44, Apex_41, Apizium_44, Ashraf_44, Austelle_41, Badfish_45, Banjo_44, Basato_46, BatteryCK_44, Beaglebox_44, Bishoperium_44, BlackStallion_45, BlueHusk_45, Bluephacebaby_44, BobbyK_41, Boehler_45, Brilliant_45, BrownCNA_42, Buckeye_45, Burr_44, CRB2_46, CamL_45, CampRoach_45, Cannibal_45, Caspiboi_46, Chaelin_45, Chah_46, Charles1_45, CharlieGBrown_44, CheetO_45,

Cher_44, Childish_44, Chipette_46, Chorkpop_45, ChrisnMich_40, Chunky_45, Chute_44, Cobra_45, Colbert_45, Coletti_44, Cooper_41, Cornbread_45, Cornobble_44, Cosmolli16_44, Craff_45, Crownjwl_45, DaddyDaniels_45, Daffy_45, Daka_46, Dati_45, DelRivs_44, Derpp_44, Dice_44, Dingo_45, Dione_44, DirtJuice_45, Doddsville_45, DoesntMatter_44, DonSanchon_44, DuchessDung_43, Duggie_44, Durga_45, ElvisPhasley_46, Emiris_45, EmpTee_45, Epah_39, Eremos_45, Etaye_45, Eugenia_45, Fanaw_39, Fang_45, FluffyNinja_45, Fortunato_41, Fozzie_44, Frankicide_45, Frederick_41, Freya_44, FriarPreacher_44, Fringe_45, FugateOSU_44, Gareth_44, GeneCoco_45, GinPorsche_39, Giraffe_45, Gophee_45, Grand2040_44, Gwennie1_45, Gwilliam_45, Gyarad_0045, HSavage_45, Haimas_45, Haleema_44, Hally898_39, Hamish_45, Hangman_40, Hartsy_45, Harvey_45, Heath_39, Held_45, HenryJackson_44, Hertubise_45, Hetaeria_45, HighStump_44, Hocus_44, Horchata_45, Hydro_40, ImtiyazSitla_44, Inchworm_45, Inverness_45, Iridessa_46, Iridoclysis_45, IsaacEli_45, JAMaL_40, JDog_44, JacAttac_45, JaguarMi_40, JakeO_44, JangoPhett_45, Jesabah_45, Jillium_44, Jiminy_44, Jiraiya_44, KLucky39_45, Kahve_44, Kailash_45, Katniss_45, Keitherie_45, Khan1_45, Kikipoo_45, Kimbrough_45, KingTut_36, KingVeVeVe_45, KlimbOn_45, Kloppinator_45, Kwadwo_44, Kwksand96_44, Labeouficaum_44, Lambano_39, LasagnaCat_45, Lasso_45, LeeLot_45, Lego3393_44, Legolas_44, LeiMonet_46, LemonSlice_45, Lolalove_40, Longacauda_44, Lopsy_44, LostAndPhound_44, LuckyMarjie_44, Lulumae_44, Lulwa_45, Lumine_44, MRabcd_44, Mag7_44, Magic8_45, Magpie_39, Mana_44, Manad_44, Maru_44, Maskar_44, Matalotodo_45, Mcshane_44, Mecca_44, Megamind20_45, Megatron_45, Melc17_45, MelsMeow_44, Mesh1_45, Mesmerelda_45, MichaelPhcott_44, Mikota_45, MiniBoss_45, MitKao_45, Mithril_40, Morgushi_45, Morty_45, Mosaic_44, MrPhizzler_44, Mudslide_40, Mulan_44, Murdoc_45, Mutante_44, Nacho_0045, Nanao_39, Nathan_46, Newman_45, Nicole21_45, Nigel_39, Numberten_45, Nyala_44, OSmaximus_45, Olak_44, Oline_44, Olive_45, OliverWalter_45, Omniscient_45, Oosterbaan_45, Orfeu_44, Orion_45, Orwigg_44, PG1_45, Pacifista_44, PenguinLover67_46, Phamished_45, Phareon_45, PhatCats2014_45, PhatLouie_45, PhenghisKhan_44, Pherdinand_45, Phergie_44, Phipps_45, Phleuron_44, PhrankReynolds_43, PhrodoBaggins_44, Phunky_45, Piglet_0044, PinheadLarry_45, Pinkman_44, Pipsqueak_45, Placalicious_44, Plata_45, Plmatters_45, Podrick_45, Pops_45, Poster_39, Potter_44, Prickles_45, Prince_40, ProfessorX_45, Puhltonio_45, QueenBeane_45, QueenPie_39, Quesadilla_46, Quisquilliae_45, RawrgerThat_41, RedMaple_44, Ricotta_44, Riggan_45, Rimu_47, Riverton_44, Robyn_44, Roliet_45, Roscoe_46, Roy17_45, SDcharge11_45, Samaymay_45, SassyCat97_44, Schadenfreude_44, Schueller_44, Scoot17C_45, Scrick_45, Selr12_45, Serendipity_45, Serpentine_0045, Sheila_45, ShiVal_45, Sigman_45, SilverBell_45, Simielle_44, SirBeauregard_45, Skippy_45, Slatt_45, Soile_45, Solosis_44, Sophia_44, Soto_45, Spartan300_45, Squid_45, Squiggle_45, Struggle_44, Suffolk_45, Surely_45, Swiphy_47, Swish_45, TallGrassMM_45, Telesworld_44, Thora_45, ThreeOh3D2_45, Thunderbird_44, Timmi_44, TomBombadil_45, Tomlarah_45, Toni_44, TooFast2Furius_47, Tooj_45, True_44, Trypo_45, TyrionL_44, UAch1_45, UncleHowie_45, Usavi_45, Vaishali24_44, Valjean_45, Vaticameos_41, Veritas_44, VioletZ_41, Virapocalypse_45, Virgeve_44, Vista_45, Vivaldi_45, Vortex_45, Waleliano_40, Wallhey_44, Waterdiva_45, Weher20_45, Windsor_44, Xavier_44, Xincheng_39, Yoshand_45, YouGoGlencoco_45, Zaider_46, Zelda_45, Zemanar_41, Zonia_45,

Genes that have the "Most Annotated" start but do not call it:

-

Genes that do not have the "Most Annotated" start:

- Bae_43, Bernardo_44, Butters_32, Camara_26, CharlottesWeb_38, Chickaboom_25, DanHam62_26, Glotell_27, Imvubu_36, KHumphrey_26, Leona_25, Malisha_40, Mariokart_38, Mortcellus_42, PhluffyCoco_26, Pipefish_45, RedFox_26, Rich_42, Rubeelu_32, Serendipitous_43,

Summary by start number:

Start 9:

- Found in 1 of 346 (0.3%) of genes in pham
- Manual Annotations of this start: 1 of 307
- Called 100.0% of time when present
- Phage (with cluster) where this start called: Malisha_40 (DN),

Start 12:

- Found in 3 of 346 (0.9%) of genes in pham
- Manual Annotations of this start: 3 of 307
- Called 100.0% of time when present
- Phage (with cluster) where this start called: Bernardo_44 (B3), Mortcellus_42 (B3), Pipefish_45 (B3),

Start 14:

- Found in 2 of 346 (0.6%) of genes in pham
- Manual Annotations of this start: 1 of 307
- Called 100.0% of time when present
- Phage (with cluster) where this start called: CharlottesWeb_38 (DR), Mariokart_38 (DR),

Start 17:

- Found in 326 of 346 (94.2%) of genes in pham
- Manual Annotations of this start: 291 of 307
- Called 100.0% of time when present
- Phage (with cluster) where this start called: ABU_45 (B1), AbsoluteMadLad_44 (B1), Adriana_45 (B1), Aelin_44 (B1), Ahwei_39 (B4), AltPhacts_45 (B1), Altwerkus_44 (B1), Anderson_45 (B1), Andre_45 (B1), AngelCake_44 (B1), Antihero_39 (B4), Antonia_44 (B1), Apex_41 (B4), Apizium_44 (B1), Ashraf_44 (B1), Austelle_41 (B4), Badfish_45 (B1), Banjo_44 (B1), Basato_46 (B1), BatteryCK_44 (B1), Beaglebox_44 (B1), Bishoperium_44 (B1), BlackStallion_45 (B1), BlueHusk_45 (B1), Bluephacebaby_44 (B1), BobbyK_41 (B4), Boehler_45 (B1), Brilliant_45 (B1), BrownCNA_42 (B4), Buckeye_45 (B1), Burr_44 (B1), CRB2_46 (B9), CamL_45 (B1), CampRoach_45 (B1), Cannibal_45 (B1), Caspiboi_46 (B1), Chaelin_45 (B1), Chah_46 (B1), Charles1_45 (B1), CharlieGBrown_44 (B1), CheetO_45 (B1), Cher_44 (B1), Childish_44 (B1), Chipette_46 (B1), Chorkpop_45 (B1), ChrisnMich_40 (B4), Chunky_45 (B1), Chute_44 (B1), Cobra_45 (B1), Colbert_45 (B1), Coletti_44 (B1), Cooper_41 (B4), Cornbread_45 (B1), Cornobble_44 (B1), Cosmolli16_44 (B1), Craff_45 (B1), Crownjwl_45 (B1), DaddyDaniels_45 (B1), Daffy_45 (B1), Daka_46 (B1), Dati_45 (B1), DelRivs_44 (B1), Derpp_44 (B1), Dice_44 (B1), Dingo_45 (B1), Dione_44 (B1), DirtJuice_45 (B1), Doddsville_45 (B1), DoesntMatter_44 (B1), DonSanchon_44 (B1), DuchessDung_43 (B1), Duggie_44 (B1), Durga_45 (B1), ElvisPhasley_46 (B1), Emiris_45 (B1), EmpTee_45 (B1), Epah_39 (B4), Eremos_45 (B1), Etaye_45 (B1), Eugenia_45 (B1), Fanaw_39 (B4), Fang_45 (B1), FluffyNinja_45 (B1), Fortunato_41 (B4), Fozzie_44 (B1), Frankicide_45 (B1), Frederick_41 (B4), Freya_44 (B1), FriarPreacher_44 (B1), Fringe_45 (B1), FugateOSU_44 (B1),

Gareth_44 (B1), GeneCoco_45 (B1), GinPorsche_39 (B4), Giraffe_45 (B1), Gophee_45 (B1), Grand2040_44 (B1), Gwennie1_45 (B1), Gwilliam_45 (B1), Gyarad_0045 (B1), HSavage_45 (B1), Haimas_45 (B1), Haleema_44 (B1), Hally898_39 (B4), Hamish_45 (B1), Hangman_40 (B4), Hartsy_45 (B1), Harvey_45 (B1), Heath_39 (B4), Held_45 (B1), HenryJackson_44 (B1), Hertubise_45 (B1), Hetaeria_45 (B1), HighStump_44 (B1), Hocus_44 (B1), Horchata_45 (B1), Hydro_40 (B4), ImtiyazSitla_44 (B1), Inchworm_45 (B1), Inverness_45 (B1), Iridessa_46 (B1), Iridoclysis_45 (B1), IsaacEli_45 (B1), JAMaL_40 (B4), JDog_44 (B1), JacAttac_45 (B1), JaguarMi_40 (B4), JakeO_44 (B1), JangoPhett_45 (B1), Jesabah_45 (B1), Jillium_44 (B1), Jiminy_44 (B1), Jiraiya_44 (B1), KLucky39_45 (B1), Kahve_44 (B1), Kailash_45 (B1), Katniss_45 (B1), Keitherie_45 (B1), Khan1_45 (B1), Kikipoo_45 (B1), Kimbrough_45 (B1), KingTut_36 (B1), KingVeVeVe_45 (B1), KlimbOn_45 (B1), Kloppinator_45 (B1), Kwadwo_44 (B1), Kwksand96_44 (B1), Labeouficaum_44 (B1), Lambano_39 (B4), LasagnaCat_45 (B1), Lasso_45 (B1), LeeLot_45 (B1), Lego3393_44 (B1), Legolas_44 (B1), LeiMonet_46 (B1), LemonSlice_45 (B1), Lolalove_40 (B4), Longacauda_44 (B1), Lopsy_44 (B1), LostAndPhound_44 (B1), LuckyMarjie_44 (B1), Lulumae_44 (B1), Lulwa_45 (B1), Lumine_44 (B1), MRabcd_44 (B1), Mag7_44 (B1), Magic8_45 (B1), Magpie_39 (B4), Mana_44 (B1), Manad_44 (B1), Maru_44 (B1), Maskar_44 (B1), Matalotodo_45 (B1), Mcshane_44 (B1), Mecca_44 (B1), Megamind20_45 (B1), Megatron_45 (B1), Melc17_45 (B1), MelsMeow_44 (B1), Mesh1_45 (B1), Mesmerelda_45 (B1), MichaelPhcott_44 (B1), Mikota_45 (B1), MiniBoss_45 (B1), MitKao_45 (B1), Mithril_40 (B4), Morgushi_45 (B1), Morty_45 (B1), Mosaic_44 (B1), MrPhizzler_44 (B1), Mudslide_40 (B4), Mulan_44 (B1), Murdoc_45 (B1), Mutante_44 (B1), Nacho_0045 (B1), Nanao_39 (B4), Nathan_46 (B1), Newman_45 (B1), Nicole21_45 (B1), Nigel_39 (B4), Numberten_45 (B1), Nyala_44 (B1), OSmaximus_45 (B1), Olak_44 (B1), Oline_44 (B1), Olive_45 (B1), OliverWalter_45 (B1), Omniscient_45 (B1), Oosterbaan_45 (B1), Orfeu_44 (B1), Orion_45 (B1), Orwigg_44 (B1), PG1_45 (B1), Pacifista_44 (B1), PenguinLover67_46 (B9), Phamished_45 (B1), Phareon_45 (B1), PhatCats2014_45 (B1), PhatLouie_45 (B1), PhenghisKhan_44 (B1), Pherdinand_45 (B1), Phergie_44 (B1), Phipps_45 (B1), Phleuron_44 (B1), PhrankReynolds_43 (B1), PhrodoBaggins_44 (B1), Phunky_45 (B1), Piglet_0044 (B1), PinheadLarry_45 (B1), Pinkman_44 (B1), Pipsqueak_45 (B1), Placalicious_44 (B1), Plata_45 (B1), Plmatters_45 (B1), Podrick_45 (B1), Pops_45 (B1), Poster_39 (B4), Potter_44 (B1), Prickles_45 (B1), Prince_40 (B4), ProfessorX_45 (B1), Puhltonio_45 (B1), QueenBeane_45 (B1), QueenPie_39 (B4), Quesadilla_46 (B9), Quisquiliae_45 (B1), RawrgerThat_41 (B4), RedMaple_44 (B1), Ricotta_44 (B1), Riggan_45 (B1), Rimu_47 (B1), Riverton_44 (B1), Robyn_44 (B1), Roliet_45 (B1), Roscoe_46 (B1), Roy17_45 (B1), SDcharge11_45 (B1), Samaymay_45 (B1), SassyCat97_44 (B1), Schadenfreude_44 (B1), Schueller_44 (B1), Scoot17C_45 (B1), Scrick_45 (B1), Selr12_45 (B1), Serendipity_45 (B1), Serpentine_0045 (B1), Sheila_45 (B1), ShiVal_45 (B1), Sigman_45 (B1), SilverBell_45 (B1), Simielle_44 (B1), SirBeauregard_45 (B1), Skippy_45 (B1), Slatt_45 (B1), Soile_45 (B1), Solosis_44 (B1), Sophia_44 (B1), Soto_45 (B1), Spartan300_45 (B1), Squid_45 (B1), Squiggle_45 (B1), Struggle_44 (B1), Suffolk_45 (B1), Surely_45 (B1), Swiphy_47 (B1), Swish_45 (B1), TallGrassMM_45 (B1), Telesworld_44 (B1), Thora_45 (B1), ThreeOh3D2_45 (B1), Thunderbird_44 (B1), Timmi_44 (B1), TomBombadil_45 (B1), Tomlarah_45 (B1), Toni_44 (B1), TooFast2Furius_47 (B1), Tooj_45 (B1), True_44 (B1), Trypo_45 (B1), TyrionL_44 (B1), UAch1_45 (B1), UncleHowie_45 (B1), Usavi_45 (B1), Vaishali24_44 (B1), Valjean_45 (B1), Vaticameos_41 (B1), Veritas_44 (B1), VioletZ_41 (B4), Virapocalypse_45 (B1), Virgeve_44 (B1), Vista_45 (B1), Vivaldi_45 (B1), Vortex_45 (B1), Waleliano_40 (B4), Wallhey_44 (B1), Waterdiva_45 (B1), Weher20_45 (B1), Windsor_44 (B1), Xavier_44 (B1), Xincheng_39 (B4),

Yoshand_45 (B1), YouGoGlencoco_45 (B1), Zaider_46 (B1), Zelda_45 (B1), Zemanar_41 (B4), Zonia_45 (B1),

Start 18:

- Found in 1 of 346 (0.3%) of genes in pham
- Manual Annotations of this start: 1 of 307
- Called 100.0% of time when present
- Phage (with cluster) where this start called: Imvubu_36 (B10),

Start 22:

- Found in 3 of 346 (0.9%) of genes in pham
- Manual Annotations of this start: 3 of 307
- Called 100.0% of time when present
- Phage (with cluster) where this start called: Bae_43 (B5), Rich_42 (B5), Serendipitous_43 (B5),

Start 23:

- Found in 1 of 346 (0.3%) of genes in pham
- Manual Annotations of this start: 1 of 307
- Called 100.0% of time when present
- Phage (with cluster) where this start called: Chickaboom_25 (AS1),

Start 24:

- Found in 2 of 346 (0.6%) of genes in pham
- Manual Annotations of this start: 2 of 307
- Called 100.0% of time when present
- Phage (with cluster) where this start called: Butters_32 (N), Rubeelu_32 (N),

Start 25:

- Found in 7 of 346 (2.0%) of genes in pham
- Manual Annotations of this start: 4 of 307
- Called 100.0% of time when present
- Phage (with cluster) where this start called: Camara_26 (AS3), DanHam62_26 (AS3), Glotell_27 (AS3), KHumphrey_26 (AS3), Leona_25 (AS3), PhluffyCoco_26 (AS3), RedFox_26 (AS3),

Summary by clusters:

There are 11 clusters represented in this pham: DN, AS3, AS1, N, B4, B5, B1, B10, B3, DR, B9,

Info for manual annotations of cluster AS1:

- Start number 23 was manually annotated 1 time for cluster AS1.

Info for manual annotations of cluster AS3:

- Start number 25 was manually annotated 4 times for cluster AS3.

Info for manual annotations of cluster B1:

- Start number 17 was manually annotated 266 times for cluster B1.

Info for manual annotations of cluster B10:

- Start number 18 was manually annotated 1 time for cluster B10.

Info for manual annotations of cluster B3:

- Start number 12 was manually annotated 3 times for cluster B3.

Info for manual annotations of cluster B4:

- Start number 17 was manually annotated 22 times for cluster B4.

Info for manual annotations of cluster B5:

- Start number 22 was manually annotated 3 times for cluster B5.

Info for manual annotations of cluster B9:

- Start number 17 was manually annotated 3 times for cluster B9.

Info for manual annotations of cluster DN:

- Start number 9 was manually annotated 1 time for cluster DN.

Info for manual annotations of cluster DR:

- Start number 14 was manually annotated 1 time for cluster DR.

Info for manual annotations of cluster N:

- Start number 24 was manually annotated 2 times for cluster N.

Gene Information:

Gene: ABU_45 Start: 39190, Stop: 38975, Start Num: 17

Candidate Starts for ABU_45:

(4, 39292), (Start: 17 @39190 has 291 MA's), (26, 39160), (32, 39115),

Gene: AbsoluteMadLad_44 Start: 39199, Stop: 38984, Start Num: 17

Candidate Starts for AbsoluteMadLad_44:

(Start: 17 @39199 has 291 MA's), (26, 39169), (32, 39124),

Gene: Adriana_45 Start: 39188, Stop: 38973, Start Num: 17

Candidate Starts for Adriana_45:

(4, 39290), (Start: 17 @39188 has 291 MA's), (26, 39158), (32, 39113),

Gene: Aelin_44 Start: 38754, Stop: 38539, Start Num: 17

Candidate Starts for Aelin_44:

(4, 38856), (Start: 17 @38754 has 291 MA's), (26, 38724), (32, 38679),

Gene: Ahwei_39 Start: 38171, Stop: 37965, Start Num: 17

Candidate Starts for Ahwei_39:

(Start: 17 @38171 has 291 MA's), (26, 38150), (31, 38123), (32, 38105), (34, 38087), (37, 38057), (39, 38051), (40, 38030),

Gene: AltPhacts_45 Start: 39177, Stop: 38962, Start Num: 17

Candidate Starts for AltPhacts_45:

(4, 39279), (Start: 17 @39177 has 291 MA's), (26, 39147), (32, 39102),

Gene: Altwerkus_44 Start: 38878, Stop: 38663, Start Num: 17

Candidate Starts for Altwerkus_44:

(Start: 17 @38878 has 291 MA's), (26, 38848), (32, 38803),

Gene: Anderson_45 Start: 39183, Stop: 38968, Start Num: 17
Candidate Starts for Anderson_45:
(4, 39285), (Start: 17 @39183 has 291 MA's), (26, 39153), (32, 39108),

Gene: Andre_45 Start: 39182, Stop: 38967, Start Num: 17
Candidate Starts for Andre_45:
(Start: 17 @39182 has 291 MA's), (26, 39152), (32, 39107), (36, 39074),

Gene: AngelCake_44 Start: 39202, Stop: 38987, Start Num: 17
Candidate Starts for AngelCake_44:
(Start: 17 @39202 has 291 MA's), (26, 39172), (32, 39127),

Gene: Antihero_39 Start: 38171, Stop: 37965, Start Num: 17
Candidate Starts for Antihero_39:
(Start: 17 @38171 has 291 MA's), (26, 38150), (31, 38123), (32, 38105), (34, 38087), (37, 38057), (39, 38051), (40, 38030),

Gene: Antonia_44 Start: 38754, Stop: 38539, Start Num: 17
Candidate Starts for Antonia_44:
(4, 38856), (Start: 17 @38754 has 291 MA's), (26, 38724), (32, 38679),

Gene: Apex_41 Start: 39377, Stop: 39171, Start Num: 17
Candidate Starts for Apex_41:
(Start: 17 @39377 has 291 MA's), (26, 39356), (31, 39329), (32, 39311), (34, 39293), (37, 39263), (39, 39257),

Gene: Apizium_44 Start: 38943, Stop: 38728, Start Num: 17
Candidate Starts for Apizium_44:
(Start: 17 @38943 has 291 MA's), (26, 38913), (32, 38868), (36, 38835),

Gene: Ashraf_44 Start: 38747, Stop: 38532, Start Num: 17
Candidate Starts for Ashraf_44:
(Start: 17 @38747 has 291 MA's), (26, 38717), (32, 38672), (36, 38639),

Gene: Austelle_41 Start: 39833, Stop: 39627, Start Num: 17
Candidate Starts for Austelle_41:
(Start: 17 @39833 has 291 MA's), (26, 39812), (31, 39785), (32, 39767), (34, 39749), (37, 39719), (39, 39713),

Gene: Badfish_45 Start: 39213, Stop: 38998, Start Num: 17
Candidate Starts for Badfish_45:
(4, 39315), (Start: 17 @39213 has 291 MA's), (26, 39183), (32, 39138),

Gene: Bae_43 Start: 39550, Stop: 39341, Start Num: 22
Candidate Starts for Bae_43:
(Start: 22 @39550 has 3 MA's), (26, 39535), (29, 39523), (32, 39490), (36, 39457),

Gene: Banjo_44 Start: 38888, Stop: 38673, Start Num: 17
Candidate Starts for Banjo_44:
(Start: 17 @38888 has 291 MA's), (26, 38858), (32, 38813), (36, 38780),

Gene: Basato_46 Start: 39467, Stop: 39252, Start Num: 17

Candidate Starts for Basato_46:
(Start: 17 @39467 has 291 MA's), (26, 39437), (32, 39392),

Gene: BatteryCK_44 Start: 38807, Stop: 38592, Start Num: 17
Candidate Starts for BatteryCK_44:
(Start: 17 @38807 has 291 MA's), (26, 38777), (32, 38732),

Gene: Beaglebox_44 Start: 38909, Stop: 38694, Start Num: 17
Candidate Starts for Beaglebox_44:
(Start: 17 @38909 has 291 MA's), (26, 38879), (32, 38834), (36, 38801),

Gene: Bernardo_44 Start: 39575, Stop: 39339, Start Num: 12
Candidate Starts for Bernardo_44:
(Start: 12 @39575 has 3 MA's), (28, 39518), (35, 39452), (36, 39446),

Gene: Bishoperium_44 Start: 38897, Stop: 38682, Start Num: 17
Candidate Starts for Bishoperium_44:
(4, 38999), (Start: 17 @38897 has 291 MA's), (26, 38867), (32, 38822),

Gene: BlackStallion_45 Start: 39199, Stop: 38984, Start Num: 17
Candidate Starts for BlackStallion_45:
(Start: 17 @39199 has 291 MA's), (26, 39169), (32, 39124), (36, 39091),

Gene: BlueHusk_45 Start: 38696, Stop: 38481, Start Num: 17
Candidate Starts for BlueHusk_45:
(Start: 17 @38696 has 291 MA's), (26, 38666), (32, 38621),

Gene: Bluephacebaby_44 Start: 38894, Stop: 38679, Start Num: 17
Candidate Starts for Bluephacebaby_44:
(Start: 17 @38894 has 291 MA's), (26, 38864), (32, 38819),

Gene: BobbyK_41 Start: 39202, Stop: 38996, Start Num: 17
Candidate Starts for BobbyK_41:
(Start: 17 @39202 has 291 MA's), (26, 39181), (31, 39154), (32, 39136), (34, 39118), (37, 39088), (39, 39082),

Gene: Boehler_45 Start: 39200, Stop: 38985, Start Num: 17
Candidate Starts for Boehler_45:
(4, 39302), (Start: 17 @39200 has 291 MA's), (26, 39170), (32, 39125),

Gene: Brilliant_45 Start: 38905, Stop: 38690, Start Num: 17
Candidate Starts for Brilliant_45:
(Start: 17 @38905 has 291 MA's), (26, 38875), (32, 38830), (36, 38797),

Gene: BrownCNA_42 Start: 39463, Stop: 39257, Start Num: 17
Candidate Starts for BrownCNA_42:
(Start: 17 @39463 has 291 MA's), (26, 39442), (31, 39415), (32, 39397), (34, 39379), (37, 39349), (39, 39343),

Gene: Buckeye_45 Start: 39217, Stop: 39002, Start Num: 17
Candidate Starts for Buckeye_45:
(Start: 17 @39217 has 291 MA's), (26, 39187), (32, 39142),

Gene: Burr_44 Start: 38894, Stop: 38679, Start Num: 17

Candidate Starts for Burr_44:

(Start: 17 @38894 has 291 MA's), (26, 38864), (32, 38819),

Gene: Butters_32 Start: 26751, Stop: 26518, Start Num: 24

Candidate Starts for Butters_32:

(7, 26826), (8, 26823), (10, 26817), (21, 26760), (Start: 24 @26751 has 2 MA's), (30, 26727), (34, 26679), (41, 26601), (44, 26529),

Gene: CRB2_46 Start: 41727, Stop: 41521, Start Num: 17

Candidate Starts for CRB2_46:

(Start: 17 @41727 has 291 MA's), (26, 41706), (32, 41661), (33, 41652), (39, 41607), (42, 41556),

Gene: CamL_45 Start: 39195, Stop: 38980, Start Num: 17

Candidate Starts for CamL_45:

(Start: 17 @39195 has 291 MA's), (26, 39165), (32, 39120), (36, 39087),

Gene: Camara_26 Start: 18733, Stop: 18518, Start Num: 25

Candidate Starts for Camara_26:

(Start: 25 @18733 has 4 MA's),

Gene: CampRoach_45 Start: 39185, Stop: 38970, Start Num: 17

Candidate Starts for CampRoach_45:

(4, 39287), (Start: 17 @39185 has 291 MA's), (26, 39155), (32, 39110),

Gene: Cannibal_45 Start: 39178, Stop: 38963, Start Num: 17

Candidate Starts for Cannibal_45:

(Start: 17 @39178 has 291 MA's), (26, 39148), (32, 39103), (36, 39070),

Gene: Caspiboi_46 Start: 38904, Stop: 38689, Start Num: 17

Candidate Starts for Caspiboi_46:

(Start: 17 @38904 has 291 MA's), (26, 38874), (32, 38829),

Gene: Chaelin_45 Start: 38892, Stop: 38677, Start Num: 17

Candidate Starts for Chaelin_45:

(4, 38994), (Start: 17 @38892 has 291 MA's), (26, 38862), (32, 38817),

Gene: Chah_46 Start: 39212, Stop: 38997, Start Num: 17

Candidate Starts for Chah_46:

(4, 39314), (Start: 17 @39212 has 291 MA's), (26, 39182), (32, 39137),

Gene: Charles1_45 Start: 39180, Stop: 38965, Start Num: 17

Candidate Starts for Charles1_45:

(4, 39282), (Start: 17 @39180 has 291 MA's), (26, 39150), (32, 39105),

Gene: CharlieGBrown_44 Start: 38770, Stop: 38555, Start Num: 17

Candidate Starts for CharlieGBrown_44:

(4, 38872), (Start: 17 @38770 has 291 MA's), (26, 38740), (32, 38695),

Gene: CharlottesWeb_38 Start: 32763, Stop: 32527, Start Num: 14

Candidate Starts for CharlottesWeb_38:

(11, 32778), (13, 32766), (Start: 14 @32763 has 1 MA's), (27, 32712), (28, 32706), (38, 32616),

Gene: CheetO_45 Start: 39194, Stop: 38979, Start Num: 17
Candidate Starts for CheetO_45:
(4, 39296), (Start: 17 @39194 has 291 MA's), (26, 39164), (32, 39119),

Gene: Cher_44 Start: 38917, Stop: 38702, Start Num: 17
Candidate Starts for Cher_44:
(Start: 17 @38917 has 291 MA's), (26, 38887), (32, 38842), (36, 38809),

Gene: Chickaboom_25 Start: 18878, Stop: 18663, Start Num: 23
Candidate Starts for Chickaboom_25:
(Start: 23 @18878 has 1 MA's),

Gene: Childish_44 Start: 38920, Stop: 38705, Start Num: 17
Candidate Starts for Childish_44:
(Start: 17 @38920 has 291 MA's), (26, 38890), (32, 38845), (36, 38812),

Gene: Chipette_46 Start: 39410, Stop: 39195, Start Num: 17
Candidate Starts for Chipette_46:
(Start: 17 @39410 has 291 MA's), (26, 39380), (32, 39335),

Gene: Chorkpop_45 Start: 38916, Stop: 38701, Start Num: 17
Candidate Starts for Chorkpop_45:
(4, 39018), (Start: 17 @38916 has 291 MA's), (26, 38886), (32, 38841),

Gene: ChrisnMich_40 Start: 38163, Stop: 37957, Start Num: 17
Candidate Starts for ChrisnMich_40:
(Start: 17 @38163 has 291 MA's), (26, 38142), (31, 38115), (32, 38097), (34, 38079), (37, 38049), (39, 38043), (40, 38022),

Gene: Chunky_45 Start: 39203, Stop: 38988, Start Num: 17
Candidate Starts for Chunky_45:
(Start: 17 @39203 has 291 MA's), (26, 39173), (32, 39128),

Gene: Chute_44 Start: 39241, Stop: 39026, Start Num: 17
Candidate Starts for Chute_44:
(4, 39343), (Start: 17 @39241 has 291 MA's), (26, 39211), (32, 39166),

Gene: Cobra_45 Start: 39201, Stop: 38986, Start Num: 17
Candidate Starts for Cobra_45:
(Start: 17 @39201 has 291 MA's), (26, 39171), (32, 39126), (36, 39093),

Gene: Colbert_45 Start: 39256, Stop: 39041, Start Num: 17
Candidate Starts for Colbert_45:
(Start: 17 @39256 has 291 MA's), (26, 39226), (32, 39181),

Gene: Coletti_44 Start: 39241, Stop: 39026, Start Num: 17
Candidate Starts for Coletti_44:
(4, 39343), (Start: 17 @39241 has 291 MA's), (26, 39211), (32, 39166),

Gene: Cooper_41 Start: 38382, Stop: 38176, Start Num: 17
Candidate Starts for Cooper_41:
(Start: 17 @38382 has 291 MA's), (26, 38361), (31, 38334), (32, 38316), (34, 38298), (37, 38268), (39, 38262),

Gene: Cornbread_45 Start: 38917, Stop: 38702, Start Num: 17
Candidate Starts for Cornbread_45:
(Start: 17 @38917 has 291 MA's), (26, 38887), (32, 38842), (36, 38809),

Gene: Cornobble_44 Start: 38755, Stop: 38540, Start Num: 17
Candidate Starts for Cornobble_44:
(4, 38857), (Start: 17 @38755 has 291 MA's), (26, 38725), (32, 38680),

Gene: Cosmolli16_44 Start: 38905, Stop: 38690, Start Num: 17
Candidate Starts for Cosmolli16_44:
(Start: 17 @38905 has 291 MA's), (26, 38875), (32, 38830),

Gene: Craff_45 Start: 39198, Stop: 38983, Start Num: 17
Candidate Starts for Craff_45:
(4, 39300), (Start: 17 @39198 has 291 MA's), (26, 39168), (32, 39123),

Gene: Crownjwl_45 Start: 38971, Stop: 38756, Start Num: 17
Candidate Starts for Crownjwl_45:
(4, 39073), (Start: 17 @38971 has 291 MA's), (26, 38941), (32, 38896),

Gene: DaddyDaniels_45 Start: 38889, Stop: 38674, Start Num: 17
Candidate Starts for DaddyDaniels_45:
(4, 38991), (Start: 17 @38889 has 291 MA's), (26, 38859), (32, 38814),

Gene: Daffy_45 Start: 38920, Stop: 38705, Start Num: 17
Candidate Starts for Daffy_45:
(Start: 17 @38920 has 291 MA's), (26, 38890), (32, 38845), (36, 38812),

Gene: Daka_46 Start: 39193, Stop: 38978, Start Num: 17
Candidate Starts for Daka_46:
(Start: 17 @39193 has 291 MA's), (26, 39163), (32, 39118),

Gene: DanHam62_26 Start: 18732, Stop: 18517, Start Num: 25
Candidate Starts for DanHam62_26:
(Start: 25 @18732 has 4 MA's),

Gene: Dati_45 Start: 38914, Stop: 38699, Start Num: 17
Candidate Starts for Dati_45:
(Start: 17 @38914 has 291 MA's), (26, 38884), (32, 38839),

Gene: DelRivs_44 Start: 38915, Stop: 38700, Start Num: 17
Candidate Starts for DelRivs_44:
(4, 39017), (Start: 17 @38915 has 291 MA's), (26, 38885), (32, 38840),

Gene: Derpp_44 Start: 38759, Stop: 38544, Start Num: 17
Candidate Starts for Derpp_44:
(Start: 17 @38759 has 291 MA's), (26, 38729), (32, 38684), (36, 38651),

Gene: Dice_44 Start: 38894, Stop: 38679, Start Num: 17
Candidate Starts for Dice_44:
(Start: 17 @38894 has 291 MA's), (26, 38864), (32, 38819), (36, 38786),

Gene: Dingo_45 Start: 39177, Stop: 38962, Start Num: 17
Candidate Starts for Dingo_45:
(Start: 17 @39177 has 291 MA's), (26, 39147), (32, 39102),

Gene: Dione_44 Start: 38899, Stop: 38684, Start Num: 17
Candidate Starts for Dione_44:
(Start: 17 @38899 has 291 MA's), (26, 38869), (32, 38824), (36, 38791),

Gene: DirtJuice_45 Start: 39183, Stop: 38968, Start Num: 17
Candidate Starts for DirtJuice_45:
(Start: 17 @39183 has 291 MA's), (26, 39153), (32, 39108),

Gene: Doddsville_45 Start: 38913, Stop: 38698, Start Num: 17
Candidate Starts for Doddsville_45:
(4, 39015), (Start: 17 @38913 has 291 MA's), (26, 38883), (32, 38838),

Gene: DoesntMatter_44 Start: 39186, Stop: 38971, Start Num: 17
Candidate Starts for DoesntMatter_44:
(4, 39288), (Start: 17 @39186 has 291 MA's), (26, 39156), (32, 39111),

Gene: DonSanchon_44 Start: 38893, Stop: 38678, Start Num: 17
Candidate Starts for DonSanchon_44:
(4, 38995), (Start: 17 @38893 has 291 MA's), (26, 38863), (32, 38818),

Gene: DuchessDung_43 Start: 38047, Stop: 37832, Start Num: 17
Candidate Starts for DuchessDung_43:
(Start: 17 @38047 has 291 MA's), (26, 38017), (32, 37972), (36, 37939),

Gene: Duggie_44 Start: 38915, Stop: 38700, Start Num: 17
Candidate Starts for Duggie_44:
(4, 39017), (Start: 17 @38915 has 291 MA's), (26, 38885), (32, 38840),

Gene: Durga_45 Start: 39213, Stop: 38998, Start Num: 17
Candidate Starts for Durga_45:
(4, 39315), (Start: 17 @39213 has 291 MA's), (26, 39183), (32, 39138),

Gene: ElvisPhasley_46 Start: 39235, Stop: 39020, Start Num: 17
Candidate Starts for ElvisPhasley_46:
(Start: 17 @39235 has 291 MA's), (26, 39205), (32, 39160), (36, 39127),

Gene: Emiris_45 Start: 39181, Stop: 38966, Start Num: 17
Candidate Starts for Emiris_45:
(Start: 17 @39181 has 291 MA's), (26, 39151), (32, 39106), (36, 39073),

Gene: EmpTee_45 Start: 39193, Stop: 38978, Start Num: 17
Candidate Starts for EmpTee_45:
(4, 39295), (Start: 17 @39193 has 291 MA's), (26, 39163), (32, 39118),

Gene: Epah_39 Start: 38171, Stop: 37965, Start Num: 17
Candidate Starts for Epah_39:
(Start: 17 @38171 has 291 MA's), (26, 38150), (31, 38123), (32, 38105), (34, 38087), (37, 38057), (39, 38051), (40, 38030),

Gene: Eremos_45 Start: 39192, Stop: 38977, Start Num: 17
Candidate Starts for Eremos_45:
(Start: 17 @39192 has 291 MA's), (26, 39162), (32, 39117),

Gene: Etaye_45 Start: 39183, Stop: 38968, Start Num: 17
Candidate Starts for Etaye_45:
(Start: 17 @39183 has 291 MA's), (26, 39153), (32, 39108),

Gene: Eugenia_45 Start: 39202, Stop: 38987, Start Num: 17
Candidate Starts for Eugenia_45:
(4, 39304), (Start: 17 @39202 has 291 MA's), (26, 39172), (32, 39127), (36, 39094),

Gene: Fanaw_39 Start: 38868, Stop: 38662, Start Num: 17
Candidate Starts for Fanaw_39:
(Start: 17 @38868 has 291 MA's), (26, 38847), (31, 38820), (32, 38802), (34, 38784), (37, 38754), (39, 38748),

Gene: Fang_45 Start: 39206, Stop: 38991, Start Num: 17
Candidate Starts for Fang_45:
(4, 39308), (Start: 17 @39206 has 291 MA's), (26, 39176), (32, 39131),

Gene: FluffyNinja_45 Start: 39199, Stop: 38984, Start Num: 17
Candidate Starts for FluffyNinja_45:
(Start: 17 @39199 has 291 MA's), (26, 39169), (32, 39124), (36, 39091),

Gene: Fortunato_41 Start: 39196, Stop: 38990, Start Num: 17
Candidate Starts for Fortunato_41:
(Start: 17 @39196 has 291 MA's), (26, 39175), (31, 39148), (32, 39130), (34, 39112), (37, 39082), (39, 39076),

Gene: Fozzie_44 Start: 39215, Stop: 39000, Start Num: 17
Candidate Starts for Fozzie_44:
(Start: 17 @39215 has 291 MA's), (26, 39185), (32, 39140), (36, 39107),

Gene: Frankicide_45 Start: 39211, Stop: 38996, Start Num: 17
Candidate Starts for Frankicide_45:
(Start: 17 @39211 has 291 MA's), (26, 39181), (32, 39136), (36, 39103),

Gene: Frederick_41 Start: 39202, Stop: 38996, Start Num: 17
Candidate Starts for Frederick_41:
(Start: 17 @39202 has 291 MA's), (26, 39181), (31, 39154), (32, 39136), (34, 39118), (37, 39088), (39, 39082),

Gene: Freya_44 Start: 38890, Stop: 38675, Start Num: 17
Candidate Starts for Freya_44:
(Start: 17 @38890 has 291 MA's), (26, 38860), (32, 38815), (36, 38782),

Gene: FriarPreacher_44 Start: 39217, Stop: 39002, Start Num: 17
Candidate Starts for FriarPreacher_44:
(Start: 17 @39217 has 291 MA's), (26, 39187), (32, 39142),

Gene: Fringe_45 Start: 39182, Stop: 38967, Start Num: 17
Candidate Starts for Fringe_45:

(4, 39284), (Start: 17 @39182 has 291 MA's), (26, 39152), (32, 39107),

Gene: FugateOSU_44 Start: 38895, Stop: 38680, Start Num: 17

Candidate Starts for FugateOSU_44:

(Start: 17 @38895 has 291 MA's), (26, 38865), (32, 38820),

Gene: Gareth_44 Start: 38898, Stop: 38683, Start Num: 17

Candidate Starts for Gareth_44:

(Start: 17 @38898 has 291 MA's), (26, 38868), (32, 38823), (36, 38790),

Gene: GeneCoco_45 Start: 39207, Stop: 38992, Start Num: 17

Candidate Starts for GeneCoco_45:

(Start: 17 @39207 has 291 MA's), (26, 39177), (32, 39132), (36, 39099),

Gene: GinPorsche_39 Start: 38171, Stop: 37965, Start Num: 17

Candidate Starts for GinPorsche_39:

(Start: 17 @38171 has 291 MA's), (26, 38150), (31, 38123), (32, 38105), (34, 38087), (37, 38057), (39, 38051), (40, 38030),

Gene: Giraffe_45 Start: 38901, Stop: 38686, Start Num: 17

Candidate Starts for Giraffe_45:

(4, 39003), (Start: 17 @38901 has 291 MA's), (26, 38871), (32, 38826),

Gene: Glotell_27 Start: 18731, Stop: 18516, Start Num: 25

Candidate Starts for Glotell_27:

(3, 18866), (6, 18812), (20, 18743), (Start: 25 @18731 has 4 MA's),

Gene: Gophee_45 Start: 39184, Stop: 38969, Start Num: 17

Candidate Starts for Gophee_45:

(4, 39286), (Start: 17 @39184 has 291 MA's), (26, 39154), (32, 39109),

Gene: Grand2040_44 Start: 38916, Stop: 38701, Start Num: 17

Candidate Starts for Grand2040_44:

(Start: 17 @38916 has 291 MA's), (26, 38886), (32, 38841), (36, 38808),

Gene: Gwennie1_45 Start: 39262, Stop: 39047, Start Num: 17

Candidate Starts for Gwennie1_45:

(Start: 17 @39262 has 291 MA's), (26, 39232), (32, 39187), (36, 39154),

Gene: Gwilliam_45 Start: 39196, Stop: 38981, Start Num: 17

Candidate Starts for Gwilliam_45:

(Start: 17 @39196 has 291 MA's), (26, 39166), (32, 39121),

Gene: Gyarad_0045 Start: 39198, Stop: 38983, Start Num: 17

Candidate Starts for Gyarad_0045:

(Start: 17 @39198 has 291 MA's), (26, 39168), (32, 39123), (36, 39090),

Gene: HSavage_45 Start: 39202, Stop: 38987, Start Num: 17

Candidate Starts for HSavage_45:

(Start: 17 @39202 has 291 MA's), (26, 39172), (32, 39127), (36, 39094),

Gene: Haimas_45 Start: 39193, Stop: 38978, Start Num: 17

Candidate Starts for Haimas_45:

(Start: 17 @39193 has 291 MA's), (26, 39163), (32, 39118),

Gene: Haleema_44 Start: 38916, Stop: 38701, Start Num: 17

Candidate Starts for Haleema_44:

(Start: 17 @38916 has 291 MA's), (26, 38886), (32, 38841), (36, 38808),

Gene: Hally898_39 Start: 38183, Stop: 37977, Start Num: 17

Candidate Starts for Hally898_39:

(Start: 17 @38183 has 291 MA's), (26, 38162), (31, 38135), (32, 38117), (34, 38099), (37, 38069), (39, 38063), (40, 38042),

Gene: Hamish_45 Start: 39185, Stop: 38970, Start Num: 17

Candidate Starts for Hamish_45:

(Start: 17 @39185 has 291 MA's), (26, 39155), (32, 39110),

Gene: Hangman_40 Start: 39194, Stop: 38988, Start Num: 17

Candidate Starts for Hangman_40:

(Start: 17 @39194 has 291 MA's), (26, 39173), (31, 39146), (32, 39128), (34, 39110), (37, 39080), (39, 39074),

Gene: Hartsy_45 Start: 39236, Stop: 39021, Start Num: 17

Candidate Starts for Hartsy_45:

(Start: 17 @39236 has 291 MA's), (26, 39206), (32, 39161),

Gene: Harvey_45 Start: 39211, Stop: 38996, Start Num: 17

Candidate Starts for Harvey_45:

(4, 39313), (Start: 17 @39211 has 291 MA's), (26, 39181), (32, 39136),

Gene: Heath_39 Start: 38801, Stop: 38595, Start Num: 17

Candidate Starts for Heath_39:

(Start: 17 @38801 has 291 MA's), (26, 38780), (31, 38753), (32, 38735), (34, 38717), (37, 38687), (39, 38681),

Gene: Held_45 Start: 38900, Stop: 38685, Start Num: 17

Candidate Starts for Held_45:

(4, 39002), (Start: 17 @38900 has 291 MA's), (26, 38870), (32, 38825),

Gene: HenryJackson_44 Start: 38916, Stop: 38701, Start Num: 17

Candidate Starts for HenryJackson_44:

(4, 39018), (Start: 17 @38916 has 291 MA's), (26, 38886), (32, 38841),

Gene: Hertubise_45 Start: 39207, Stop: 38992, Start Num: 17

Candidate Starts for Hertubise_45:

(Start: 17 @39207 has 291 MA's), (26, 39177), (32, 39132),

Gene: Hetaeria_45 Start: 39209, Stop: 38994, Start Num: 17

Candidate Starts for Hetaeria_45:

(Start: 17 @39209 has 291 MA's), (26, 39179), (32, 39134),

Gene: HighStump_44 Start: 38899, Stop: 38684, Start Num: 17

Candidate Starts for HighStump_44:

(4, 39001), (Start: 17 @38899 has 291 MA's), (26, 38869), (32, 38824),

Gene: Hocus_44 Start: 38905, Stop: 38690, Start Num: 17
Candidate Starts for Hocus_44:
(Start: 17 @38905 has 291 MA's), (26, 38875), (32, 38830), (36, 38797),

Gene: Horchata_45 Start: 39187, Stop: 38972, Start Num: 17
Candidate Starts for Horchata_45:
(4, 39289), (Start: 17 @39187 has 291 MA's), (26, 39157), (32, 39112),

Gene: Hydro_40 Start: 39211, Stop: 39005, Start Num: 17
Candidate Starts for Hydro_40:
(Start: 17 @39211 has 291 MA's), (26, 39190), (31, 39163), (32, 39145), (34, 39127), (37, 39097), (39, 39091),

Gene: ImtiyazSitla_44 Start: 38747, Stop: 38532, Start Num: 17
Candidate Starts for ImtiyazSitla_44:
(Start: 17 @38747 has 291 MA's), (26, 38717), (32, 38672), (36, 38639),

Gene: Imvubu_36 Start: 35895, Stop: 35680, Start Num: 18
Candidate Starts for Imvubu_36:
(1, 36156), (2, 36096), (Start: 18 @35895 has 1 MA's), (20, 35886), (28, 35859), (31, 35838), (32, 35820), (37, 35772), (39, 35766),

Gene: Inchworm_45 Start: 39185, Stop: 38970, Start Num: 17
Candidate Starts for Inchworm_45:
(4, 39287), (Start: 17 @39185 has 291 MA's), (26, 39155), (32, 39110),

Gene: Inverness_45 Start: 39199, Stop: 38984, Start Num: 17
Candidate Starts for Inverness_45:
(Start: 17 @39199 has 291 MA's), (26, 39169), (32, 39124), (36, 39091),

Gene: Iridessa_46 Start: 38901, Stop: 38686, Start Num: 17
Candidate Starts for Iridessa_46:
(Start: 17 @38901 has 291 MA's), (26, 38871), (32, 38826), (36, 38793),

Gene: Iridoclysis_45 Start: 39179, Stop: 38964, Start Num: 17
Candidate Starts for Iridoclysis_45:
(Start: 17 @39179 has 291 MA's), (26, 39149), (32, 39104),

Gene: IsaacEli_45 Start: 39203, Stop: 38988, Start Num: 17
Candidate Starts for IsaacEli_45:
(4, 39305), (Start: 17 @39203 has 291 MA's), (26, 39173), (32, 39128),

Gene: JAMaL_40 Start: 39382, Stop: 39176, Start Num: 17
Candidate Starts for JAMaL_40:
(Start: 17 @39382 has 291 MA's), (26, 39361), (31, 39334), (32, 39316), (34, 39298), (37, 39268), (39, 39262),

Gene: JDog_44 Start: 38916, Stop: 38701, Start Num: 17
Candidate Starts for JDog_44:
(Start: 17 @38916 has 291 MA's), (26, 38886), (32, 38841),

Gene: JacAttac_45 Start: 39185, Stop: 38970, Start Num: 17
Candidate Starts for JacAttac_45:

(Start: 17 @39185 has 291 MA's), (26, 39155), (32, 39110), (36, 39077),

Gene: JaguarMi_40 Start: 38677, Stop: 38471, Start Num: 17

Candidate Starts for JaguarMi_40:

(Start: 17 @38677 has 291 MA's), (26, 38656), (31, 38629), (32, 38611), (34, 38593), (37, 38563), (39, 38557),

Gene: JakeO_44 Start: 38918, Stop: 38703, Start Num: 17

Candidate Starts for JakeO_44:

(Start: 17 @38918 has 291 MA's), (26, 38888), (32, 38843),

Gene: JangoPhett_45 Start: 39187, Stop: 38972, Start Num: 17

Candidate Starts for JangoPhett_45:

(Start: 17 @39187 has 291 MA's), (26, 39157), (32, 39112),

Gene: Jesabah_45 Start: 38918, Stop: 38703, Start Num: 17

Candidate Starts for Jesabah_45:

(Start: 17 @38918 has 291 MA's), (26, 38888), (32, 38843), (36, 38810),

Gene: Jillium_44 Start: 38909, Stop: 38694, Start Num: 17

Candidate Starts for Jillium_44:

(Start: 17 @38909 has 291 MA's), (26, 38879), (32, 38834),

Gene: Jiminy_44 Start: 38753, Stop: 38538, Start Num: 17

Candidate Starts for Jiminy_44:

(4, 38855), (Start: 17 @38753 has 291 MA's), (26, 38723), (32, 38678),

Gene: Jiraiya_44 Start: 38906, Stop: 38691, Start Num: 17

Candidate Starts for Jiraiya_44:

(4, 39008), (Start: 17 @38906 has 291 MA's), (26, 38876), (32, 38831),

Gene: KHumphrey_26 Start: 18730, Stop: 18515, Start Num: 25

Candidate Starts for KHumphrey_26:

(Start: 25 @18730 has 4 MA's),

Gene: KLucky39_45 Start: 39197, Stop: 38982, Start Num: 17

Candidate Starts for KLucky39_45:

(Start: 17 @39197 has 291 MA's), (26, 39167), (32, 39122), (36, 39089),

Gene: Kahve_44 Start: 38913, Stop: 38698, Start Num: 17

Candidate Starts for Kahve_44:

(Start: 17 @38913 has 291 MA's), (26, 38883), (32, 38838),

Gene: Kailash_45 Start: 39251, Stop: 39036, Start Num: 17

Candidate Starts for Kailash_45:

(Start: 17 @39251 has 291 MA's), (26, 39221), (32, 39176),

Gene: Katniss_45 Start: 39212, Stop: 38997, Start Num: 17

Candidate Starts for Katniss_45:

(4, 39314), (Start: 17 @39212 has 291 MA's), (26, 39182), (32, 39137),

Gene: Keitherie_45 Start: 39250, Stop: 39035, Start Num: 17

Candidate Starts for Keitherie_45:

(4, 39352), (Start: 17 @39250 has 291 MA's), (26, 39220), (32, 39175),

Gene: Khan1_45 Start: 38934, Stop: 38719, Start Num: 17

Candidate Starts for Khan1_45:

(Start: 17 @38934 has 291 MA's), (26, 38904), (32, 38859), (36, 38826),

Gene: Kikipoo_45 Start: 39203, Stop: 38988, Start Num: 17

Candidate Starts for Kikipoo_45:

(4, 39305), (Start: 17 @39203 has 291 MA's), (26, 39173), (32, 39128),

Gene: Kimbrough_45 Start: 38905, Stop: 38690, Start Num: 17

Candidate Starts for Kimbrough_45:

(4, 39007), (Start: 17 @38905 has 291 MA's), (26, 38875), (32, 38830),

Gene: KingTut_36 Start: 34574, Stop: 34359, Start Num: 17

Candidate Starts for KingTut_36:

(Start: 17 @34574 has 291 MA's), (26, 34544), (32, 34499), (36, 34466),

Gene: KingVeVeVe_45 Start: 39178, Stop: 38963, Start Num: 17

Candidate Starts for KingVeVeVe_45:

(Start: 17 @39178 has 291 MA's), (26, 39148), (32, 39103),

Gene: KlimbOn_45 Start: 39191, Stop: 38976, Start Num: 17

Candidate Starts for KlimbOn_45:

(Start: 17 @39191 has 291 MA's), (26, 39161), (32, 39116), (36, 39083),

Gene: Kloppinator_45 Start: 39214, Stop: 38999, Start Num: 17

Candidate Starts for Kloppinator_45:

(4, 39316), (Start: 17 @39214 has 291 MA's), (26, 39184), (32, 39139), (36, 39106),

Gene: Kwadwo_44 Start: 38895, Stop: 38680, Start Num: 17

Candidate Starts for Kwadwo_44:

(Start: 17 @38895 has 291 MA's), (26, 38865), (32, 38820), (36, 38787),

Gene: Kwksand96_44 Start: 38764, Stop: 38549, Start Num: 17

Candidate Starts for Kwksand96_44:

(Start: 17 @38764 has 291 MA's), (26, 38734), (32, 38689), (36, 38656),

Gene: Labeouficaum_44 Start: 38759, Stop: 38544, Start Num: 17

Candidate Starts for Labeouficaum_44:

(Start: 17 @38759 has 291 MA's), (26, 38729), (32, 38684), (36, 38651),

Gene: Lambano_39 Start: 38183, Stop: 37977, Start Num: 17

Candidate Starts for Lambano_39:

(Start: 17 @38183 has 291 MA's), (26, 38162), (31, 38135), (32, 38117), (34, 38099), (37, 38069), (39, 38063), (40, 38042),

Gene: LasagnaCat_45 Start: 39197, Stop: 38982, Start Num: 17

Candidate Starts for LasagnaCat_45:

(4, 39299), (Start: 17 @39197 has 291 MA's), (26, 39167), (32, 39122),

Gene: Lasso_45 Start: 39170, Stop: 38955, Start Num: 17

Candidate Starts for Lasso_45:

(Start: 17 @39170 has 291 MA's), (26, 39140), (32, 39095),

Gene: LeeLot_45 Start: 39201, Stop: 38986, Start Num: 17

Candidate Starts for LeeLot_45:

(4, 39303), (Start: 17 @39201 has 291 MA's), (26, 39171), (32, 39126),

Gene: Lego3393_44 Start: 39206, Stop: 38991, Start Num: 17

Candidate Starts for Lego3393_44:

(4, 39308), (Start: 17 @39206 has 291 MA's), (26, 39176), (32, 39131),

Gene: Legolas_44 Start: 38911, Stop: 38696, Start Num: 17

Candidate Starts for Legolas_44:

(Start: 17 @38911 has 291 MA's), (26, 38881), (32, 38836), (36, 38803),

Gene: LeiMonet_46 Start: 38902, Stop: 38687, Start Num: 17

Candidate Starts for LeiMonet_46:

(4, 39004), (Start: 17 @38902 has 291 MA's), (26, 38872), (32, 38827),

Gene: LemonSlice_45 Start: 38898, Stop: 38683, Start Num: 17

Candidate Starts for LemonSlice_45:

(4, 39000), (Start: 17 @38898 has 291 MA's), (26, 38868), (32, 38823),

Gene: Leona_25 Start: 18655, Stop: 18440, Start Num: 25

Candidate Starts for Leona_25:

(3, 18790), (6, 18736), (20, 18667), (Start: 25 @18655 has 4 MA's),

Gene: Lolalove_40 Start: 39208, Stop: 39002, Start Num: 17

Candidate Starts for Lolalove_40:

(Start: 17 @39208 has 291 MA's), (26, 39187), (31, 39160), (32, 39142), (34, 39124), (37, 39094), (39, 39088),

Gene: Longacauda_44 Start: 38903, Stop: 38688, Start Num: 17

Candidate Starts for Longacauda_44:

(Start: 17 @38903 has 291 MA's), (26, 38873), (32, 38828), (36, 38795),

Gene: Lopsy_44 Start: 38753, Stop: 38538, Start Num: 17

Candidate Starts for Lopsy_44:

(4, 38855), (Start: 17 @38753 has 291 MA's), (26, 38723), (32, 38678),

Gene: LostAndPhound_44 Start: 38904, Stop: 38689, Start Num: 17

Candidate Starts for LostAndPhound_44:

(4, 39006), (Start: 17 @38904 has 291 MA's), (26, 38874), (32, 38829),

Gene: LuckyMarjie_44 Start: 38913, Stop: 38698, Start Num: 17

Candidate Starts for LuckyMarjie_44:

(Start: 17 @38913 has 291 MA's), (26, 38883), (32, 38838), (36, 38805),

Gene: Lulumae_44 Start: 38895, Stop: 38680, Start Num: 17

Candidate Starts for Lulumae_44:

(Start: 17 @38895 has 291 MA's), (26, 38865), (32, 38820), (36, 38787),

Gene: Lulwa_45 Start: 39182, Stop: 38967, Start Num: 17

Candidate Starts for Lulwa_45:

(4, 39284), (Start: 17 @39182 has 291 MA's), (26, 39152), (32, 39107),

Gene: Lumine_44 Start: 38891, Stop: 38676, Start Num: 17

Candidate Starts for Lumine_44:

(4, 38993), (Start: 17 @38891 has 291 MA's), (26, 38861), (32, 38816),

Gene: MRabcd_44 Start: 38895, Stop: 38680, Start Num: 17

Candidate Starts for MRabcd_44:

(Start: 17 @38895 has 291 MA's), (26, 38865), (32, 38820), (36, 38787),

Gene: Mag7_44 Start: 38801, Stop: 38586, Start Num: 17

Candidate Starts for Mag7_44:

(Start: 17 @38801 has 291 MA's), (26, 38771), (32, 38726),

Gene: Magic8_45 Start: 39236, Stop: 39021, Start Num: 17

Candidate Starts for Magic8_45:

(Start: 17 @39236 has 291 MA's), (26, 39206), (32, 39161),

Gene: Magpie_39 Start: 39044, Stop: 38838, Start Num: 17

Candidate Starts for Magpie_39:

(Start: 17 @39044 has 291 MA's), (26, 39023), (31, 38996), (32, 38978), (34, 38960), (37, 38930), (39, 38924),

Gene: Malisha_40 Start: 30125, Stop: 29862, Start Num: 9

Candidate Starts for Malisha_40:

(5, 30155), (Start: 9 @30125 has 1 MA's), (15, 30095), (16, 30092), (19, 30077), (42, 29903), (43, 29897),

Gene: Mana_44 Start: 38910, Stop: 38695, Start Num: 17

Candidate Starts for Mana_44:

(Start: 17 @38910 has 291 MA's), (26, 38880), (32, 38835), (36, 38802),

Gene: Manad_44 Start: 38752, Stop: 38537, Start Num: 17

Candidate Starts for Manad_44:

(4, 38854), (Start: 17 @38752 has 291 MA's), (26, 38722), (32, 38677),

Gene: Mariokart_38 Start: 32762, Stop: 32526, Start Num: 14

Candidate Starts for Mariokart_38:

(11, 32777), (13, 32765), (Start: 14 @32762 has 1 MA's), (27, 32711), (28, 32705), (38, 32615),

Gene: Maru_44 Start: 38853, Stop: 38638, Start Num: 17

Candidate Starts for Maru_44:

(Start: 17 @38853 has 291 MA's), (26, 38823), (32, 38778), (36, 38745),

Gene: Maskar_44 Start: 38747, Stop: 38532, Start Num: 17

Candidate Starts for Maskar_44:

(Start: 17 @38747 has 291 MA's), (26, 38717), (32, 38672), (36, 38639),

Gene: Matalotodo_45 Start: 39196, Stop: 38981, Start Num: 17

Candidate Starts for Matalotodo_45:

(Start: 17 @39196 has 291 MA's), (26, 39166), (32, 39121),

Gene: Mcshane_44 Start: 38893, Stop: 38678, Start Num: 17

Candidate Starts for Mcshane_44:
(Start: 17 @38893 has 291 MA's), (26, 38863), (32, 38818), (36, 38785),

Gene: Mecca_44 Start: 38896, Stop: 38681, Start Num: 17
Candidate Starts for Mecca_44:
(4, 38998), (Start: 17 @38896 has 291 MA's), (26, 38866), (32, 38821),

Gene: Megamind20_45 Start: 38918, Stop: 38703, Start Num: 17
Candidate Starts for Megamind20_45:
(4, 39020), (Start: 17 @38918 has 291 MA's), (26, 38888), (32, 38843),

Gene: Megatron_45 Start: 39194, Stop: 38979, Start Num: 17
Candidate Starts for Megatron_45:
(4, 39296), (Start: 17 @39194 has 291 MA's), (26, 39164), (32, 39119),

Gene: Melc17_45 Start: 39191, Stop: 38976, Start Num: 17
Candidate Starts for Melc17_45:
(Start: 17 @39191 has 291 MA's), (26, 39161), (32, 39116),

Gene: MelsMeow_44 Start: 38797, Stop: 38582, Start Num: 17
Candidate Starts for MelsMeow_44:
(Start: 17 @38797 has 291 MA's), (26, 38767), (32, 38722), (36, 38689),

Gene: Mesh1_45 Start: 39208, Stop: 38993, Start Num: 17
Candidate Starts for Mesh1_45:
(Start: 17 @39208 has 291 MA's), (26, 39178), (32, 39133),

Gene: Mesmerelda_45 Start: 38906, Stop: 38691, Start Num: 17
Candidate Starts for Mesmerelda_45:
(4, 39008), (Start: 17 @38906 has 291 MA's), (26, 38876), (32, 38831),

Gene: MichaelPhcott_44 Start: 38798, Stop: 38583, Start Num: 17
Candidate Starts for MichaelPhcott_44:
(Start: 17 @38798 has 291 MA's), (26, 38768), (32, 38723),

Gene: Mikota_45 Start: 39181, Stop: 38966, Start Num: 17
Candidate Starts for Mikota_45:
(Start: 17 @39181 has 291 MA's), (26, 39151), (32, 39106), (36, 39073),

Gene: MiniBoss_45 Start: 39187, Stop: 38972, Start Num: 17
Candidate Starts for MiniBoss_45:
(Start: 17 @39187 has 291 MA's), (26, 39157), (32, 39112), (36, 39079),

Gene: MitKao_45 Start: 38902, Stop: 38687, Start Num: 17
Candidate Starts for MitKao_45:
(4, 39004), (Start: 17 @38902 has 291 MA's), (26, 38872), (32, 38827),

Gene: Mithril_40 Start: 39212, Stop: 39006, Start Num: 17
Candidate Starts for Mithril_40:
(Start: 17 @39212 has 291 MA's), (26, 39191), (31, 39164), (32, 39146), (34, 39128), (37, 39098), (39, 39092),

Gene: Morgushi_45 Start: 38903, Stop: 38688, Start Num: 17

Candidate Starts for Morgushi_45:

(Start: 17 @38903 has 291 MA's), (26, 38873), (32, 38828), (36, 38795),

Gene: Mortcellus_42 Start: 39665, Stop: 39429, Start Num: 12

Candidate Starts for Mortcellus_42:

(Start: 12 @39665 has 3 MA's), (28, 39608), (35, 39542), (36, 39536),

Gene: Morty_45 Start: 39203, Stop: 38988, Start Num: 17

Candidate Starts for Morty_45:

(4, 39305), (Start: 17 @39203 has 291 MA's), (26, 39173), (32, 39128),

Gene: Mosaic_44 Start: 38908, Stop: 38693, Start Num: 17

Candidate Starts for Mosaic_44:

(4, 39010), (Start: 17 @38908 has 291 MA's), (26, 38878), (32, 38833),

Gene: MrPhizzler_44 Start: 38911, Stop: 38696, Start Num: 17

Candidate Starts for MrPhizzler_44:

(Start: 17 @38911 has 291 MA's), (26, 38881), (32, 38836), (36, 38803),

Gene: Mudslide_40 Start: 39444, Stop: 39238, Start Num: 17

Candidate Starts for Mudslide_40:

(Start: 17 @39444 has 291 MA's), (26, 39423), (31, 39396), (32, 39378), (34, 39360), (37, 39330), (39, 39324),

Gene: Mulan_44 Start: 38920, Stop: 38705, Start Num: 17

Candidate Starts for Mulan_44:

(Start: 17 @38920 has 291 MA's), (26, 38890), (32, 38845),

Gene: Murdoc_45 Start: 39195, Stop: 38980, Start Num: 17

Candidate Starts for Murdoc_45:

(Start: 17 @39195 has 291 MA's), (26, 39165), (32, 39120), (36, 39087),

Gene: Mutante_44 Start: 38902, Stop: 38687, Start Num: 17

Candidate Starts for Mutante_44:

(4, 39004), (Start: 17 @38902 has 291 MA's), (26, 38872), (32, 38827),

Gene: Nacho_0045 Start: 39197, Stop: 38982, Start Num: 17

Candidate Starts for Nacho_0045:

(4, 39299), (Start: 17 @39197 has 291 MA's), (26, 39167), (32, 39122),

Gene: Nanao_39 Start: 38170, Stop: 37964, Start Num: 17

Candidate Starts for Nanao_39:

(Start: 17 @38170 has 291 MA's), (26, 38149), (31, 38122), (32, 38104), (34, 38086), (37, 38056), (39, 38050), (40, 38029),

Gene: Nathan_46 Start: 39233, Stop: 39018, Start Num: 17

Candidate Starts for Nathan_46:

(Start: 17 @39233 has 291 MA's), (26, 39203), (32, 39158), (36, 39125),

Gene: Newman_45 Start: 39194, Stop: 38979, Start Num: 17

Candidate Starts for Newman_45:

(Start: 17 @39194 has 291 MA's), (26, 39164), (32, 39119), (36, 39086),

Gene: Nicole21_45 Start: 39192, Stop: 38977, Start Num: 17

Candidate Starts for Nicole21_45:

(Start: 17 @39192 has 291 MA's), (26, 39162), (32, 39117),

Gene: Nigel_39 Start: 38086, Stop: 37880, Start Num: 17

Candidate Starts for Nigel_39:

(Start: 17 @38086 has 291 MA's), (26, 38065), (31, 38038), (32, 38020), (34, 38002), (37, 37972), (39, 37966),

Gene: Numberten_45 Start: 39201, Stop: 38986, Start Num: 17

Candidate Starts for Numberten_45:

(4, 39303), (Start: 17 @39201 has 291 MA's), (26, 39171), (32, 39126),

Gene: Nyala_44 Start: 38894, Stop: 38679, Start Num: 17

Candidate Starts for Nyala_44:

(4, 38996), (Start: 17 @38894 has 291 MA's), (26, 38864), (32, 38819),

Gene: OSmaximus_45 Start: 39236, Stop: 39021, Start Num: 17

Candidate Starts for OSmaximus_45:

(Start: 17 @39236 has 291 MA's), (26, 39206), (32, 39161), (36, 39128),

Gene: Olak_44 Start: 38897, Stop: 38682, Start Num: 17

Candidate Starts for Olak_44:

(4, 38999), (Start: 17 @38897 has 291 MA's), (26, 38867), (32, 38822),

Gene: Oline_44 Start: 38763, Stop: 38548, Start Num: 17

Candidate Starts for Oline_44:

(4, 38865), (Start: 17 @38763 has 291 MA's), (26, 38733), (32, 38688),

Gene: Olive_45 Start: 39184, Stop: 38969, Start Num: 17

Candidate Starts for Olive_45:

(4, 39286), (Start: 17 @39184 has 291 MA's), (26, 39154), (32, 39109),

Gene: OliverWalter_45 Start: 39206, Stop: 38991, Start Num: 17

Candidate Starts for OliverWalter_45:

(Start: 17 @39206 has 291 MA's), (26, 39176), (32, 39131),

Gene: Omniscient_45 Start: 39203, Stop: 38988, Start Num: 17

Candidate Starts for Omniscient_45:

(4, 39305), (Start: 17 @39203 has 291 MA's), (26, 39173), (32, 39128),

Gene: Oosterbaan_45 Start: 39194, Stop: 38979, Start Num: 17

Candidate Starts for Oosterbaan_45:

(Start: 17 @39194 has 291 MA's), (26, 39164), (32, 39119),

Gene: Orfeu_44 Start: 38902, Stop: 38687, Start Num: 17

Candidate Starts for Orfeu_44:

(Start: 17 @38902 has 291 MA's), (26, 38872), (32, 38827), (36, 38794),

Gene: Orion_45 Start: 39192, Stop: 38977, Start Num: 17

Candidate Starts for Orion_45:

(4, 39294), (Start: 17 @39192 has 291 MA's), (26, 39162), (32, 39117),

Gene: Orwigg_44 Start: 38890, Stop: 38675, Start Num: 17

Candidate Starts for Orwigg_44:

(Start: 17 @38890 has 291 MA's), (26, 38860), (32, 38815),

Gene: PG1_45 Start: 39205, Stop: 38990, Start Num: 17

Candidate Starts for PG1_45:

(4, 39307), (Start: 17 @39205 has 291 MA's), (26, 39175), (32, 39130),

Gene: Pacifista_44 Start: 38896, Stop: 38681, Start Num: 17

Candidate Starts for Pacifista_44:

(Start: 17 @38896 has 291 MA's), (26, 38866), (32, 38821), (36, 38788),

Gene: PenguinLover67_46 Start: 41013, Stop: 40795, Start Num: 17

Candidate Starts for PenguinLover67_46:

(4, 41109), (Start: 17 @41013 has 291 MA's), (26, 40980), (31, 40953), (32, 40935), (42, 40830),

Gene: Phamished_45 Start: 39200, Stop: 38985, Start Num: 17

Candidate Starts for Phamished_45:

(Start: 17 @39200 has 291 MA's), (26, 39170), (32, 39125),

Gene: Phareon_45 Start: 38904, Stop: 38689, Start Num: 17

Candidate Starts for Phareon_45:

(Start: 17 @38904 has 291 MA's), (26, 38874), (32, 38829), (36, 38796),

Gene: PhatCats2014_45 Start: 39209, Stop: 38994, Start Num: 17

Candidate Starts for PhatCats2014_45:

(4, 39311), (Start: 17 @39209 has 291 MA's), (26, 39179), (32, 39134),

Gene: PhatLouie_45 Start: 39198, Stop: 38983, Start Num: 17

Candidate Starts for PhatLouie_45:

(Start: 17 @39198 has 291 MA's), (26, 39168), (32, 39123),

Gene: PhenghisKhan_44 Start: 38804, Stop: 38589, Start Num: 17

Candidate Starts for PhenghisKhan_44:

(Start: 17 @38804 has 291 MA's), (26, 38774), (32, 38729),

Gene: Pherdinand_45 Start: 39200, Stop: 38985, Start Num: 17

Candidate Starts for Pherdinand_45:

(Start: 17 @39200 has 291 MA's), (26, 39170), (32, 39125), (36, 39092),

Gene: Phergie_44 Start: 38795, Stop: 38580, Start Num: 17

Candidate Starts for Phergie_44:

(Start: 17 @38795 has 291 MA's), (26, 38765), (32, 38720),

Gene: Phipps_45 Start: 39171, Stop: 38956, Start Num: 17

Candidate Starts for Phipps_45:

(Start: 17 @39171 has 291 MA's), (26, 39141), (32, 39096),

Gene: Phleuron_44 Start: 38801, Stop: 38586, Start Num: 17

Candidate Starts for Phleuron_44:

(Start: 17 @38801 has 291 MA's), (26, 38771), (32, 38726),

Gene: PhluffyCoco_26 Start: 18717, Stop: 18502, Start Num: 25

Candidate Starts for PhluffyCoco_26:

(Start: 25 @18717 has 4 MA's),

Gene: PhrankReynolds_43 Start: 38801, Stop: 38586, Start Num: 17

Candidate Starts for PhrankReynolds_43:

(Start: 17 @38801 has 291 MA's), (26, 38771), (32, 38726),

Gene: PhrodoBaggins_44 Start: 39188, Stop: 38973, Start Num: 17

Candidate Starts for PhrodoBaggins_44:

(4, 39290), (Start: 17 @39188 has 291 MA's), (26, 39158), (32, 39113),

Gene: Phunky_45 Start: 39201, Stop: 38986, Start Num: 17

Candidate Starts for Phunky_45:

(Start: 17 @39201 has 291 MA's), (26, 39171), (32, 39126), (36, 39093),

Gene: Piglet_0044 Start: 39308, Stop: 39093, Start Num: 17

Candidate Starts for Piglet_0044:

(Start: 17 @39308 has 291 MA's), (26, 39278), (32, 39233), (36, 39200),

Gene: PinheadLarry_45 Start: 38914, Stop: 38699, Start Num: 17

Candidate Starts for PinheadLarry_45:

(Start: 17 @38914 has 291 MA's), (26, 38884), (32, 38839), (36, 38806),

Gene: Pinkman_44 Start: 38757, Stop: 38542, Start Num: 17

Candidate Starts for Pinkman_44:

(Start: 17 @38757 has 291 MA's), (26, 38727), (32, 38682), (36, 38649),

Gene: Pipefish_45 Start: 40422, Stop: 40186, Start Num: 12

Candidate Starts for Pipefish_45:

(Start: 12 @40422 has 3 MA's), (28, 40365), (35, 40299), (36, 40293),

Gene: Pipsqueak_45 Start: 39199, Stop: 38984, Start Num: 17

Candidate Starts for Pipsqueak_45:

(Start: 17 @39199 has 291 MA's), (26, 39169), (32, 39124),

Gene: Placalicious_44 Start: 38892, Stop: 38677, Start Num: 17

Candidate Starts for Placalicious_44:

(Start: 17 @38892 has 291 MA's), (26, 38862), (32, 38817),

Gene: Plata_45 Start: 38913, Stop: 38698, Start Num: 17

Candidate Starts for Plata_45:

(4, 39015), (Start: 17 @38913 has 291 MA's), (26, 38883), (32, 38838),

Gene: Plmatters_45 Start: 39198, Stop: 38983, Start Num: 17

Candidate Starts for Plmatters_45:

(4, 39300), (Start: 17 @39198 has 291 MA's), (26, 39168), (32, 39123), (36, 39090),

Gene: Podrick_45 Start: 39189, Stop: 38974, Start Num: 17

Candidate Starts for Podrick_45:

(4, 39291), (Start: 17 @39189 has 291 MA's), (26, 39159), (32, 39114),

Gene: Pops_45 Start: 39213, Stop: 38998, Start Num: 17

Candidate Starts for Pops_45:

(4, 39315), (Start: 17 @39213 has 291 MA's), (26, 39183), (32, 39138), (36, 39105),

Gene: Poster_39 Start: 38171, Stop: 37965, Start Num: 17

Candidate Starts for Poster_39:

(Start: 17 @38171 has 291 MA's), (26, 38150), (31, 38123), (32, 38105), (34, 38087), (37, 38057), (39, 38051), (40, 38030),

Gene: Potter_44 Start: 38913, Stop: 38698, Start Num: 17

Candidate Starts for Potter_44:

(4, 39015), (Start: 17 @38913 has 291 MA's), (26, 38883), (32, 38838),

Gene: Prickles_45 Start: 39189, Stop: 38974, Start Num: 17

Candidate Starts for Prickles_45:

(Start: 17 @39189 has 291 MA's), (26, 39159), (32, 39114),

Gene: Prince_40 Start: 39354, Stop: 39148, Start Num: 17

Candidate Starts for Prince_40:

(Start: 17 @39354 has 291 MA's), (26, 39333), (31, 39306), (32, 39288), (34, 39270), (37, 39240), (39, 39234),

Gene: ProfessorX_45 Start: 39184, Stop: 38969, Start Num: 17

Candidate Starts for ProfessorX_45:

(4, 39286), (Start: 17 @39184 has 291 MA's), (26, 39154), (32, 39109),

Gene: Puhltonio_45 Start: 39205, Stop: 38990, Start Num: 17

Candidate Starts for Puhltonio_45:

(Start: 17 @39205 has 291 MA's), (26, 39175), (32, 39130), (36, 39097),

Gene: QueenBeane_45 Start: 39195, Stop: 38980, Start Num: 17

Candidate Starts for QueenBeane_45:

(Start: 17 @39195 has 291 MA's), (26, 39165), (32, 39120), (36, 39087),

Gene: QueenPie_39 Start: 39295, Stop: 39089, Start Num: 17

Candidate Starts for QueenPie_39:

(Start: 17 @39295 has 291 MA's), (26, 39274), (31, 39247), (32, 39229), (34, 39211), (37, 39181), (39, 39175),

Gene: Quesadilla_46 Start: 40987, Stop: 40781, Start Num: 17

Candidate Starts for Quesadilla_46:

(4, 41086), (Start: 17 @40987 has 291 MA's), (26, 40966), (32, 40921), (33, 40912),

Gene: Quisquilliae_45 Start: 39223, Stop: 39008, Start Num: 17

Candidate Starts for Quisquilliae_45:

(4, 39325), (Start: 17 @39223 has 291 MA's), (26, 39193), (32, 39148),

Gene: RawrgerThat_41 Start: 39199, Stop: 38993, Start Num: 17

Candidate Starts for RawrgerThat_41:

(Start: 17 @39199 has 291 MA's), (26, 39178), (31, 39151), (32, 39133), (34, 39115), (37, 39085), (39, 39079),

Gene: RedFox_26 Start: 18732, Stop: 18517, Start Num: 25

Candidate Starts for RedFox_26:

(Start: 25 @18732 has 4 MA's),

Gene: RedMaple_44 Start: 39202, Stop: 38987, Start Num: 17
Candidate Starts for RedMaple_44:
(Start: 17 @39202 has 291 MA's), (26, 39172), (32, 39127), (36, 39094),

Gene: Rich_42 Start: 39520, Stop: 39311, Start Num: 22
Candidate Starts for Rich_42:
(Start: 22 @39520 has 3 MA's), (26, 39505), (29, 39493), (32, 39460), (36, 39427),

Gene: Ricotta_44 Start: 38921, Stop: 38706, Start Num: 17
Candidate Starts for Ricotta_44:
(Start: 17 @38921 has 291 MA's), (26, 38891), (32, 38846), (36, 38813),

Gene: Riggan_45 Start: 39182, Stop: 38967, Start Num: 17
Candidate Starts for Riggan_45:
(Start: 17 @39182 has 291 MA's), (26, 39152), (32, 39107),

Gene: Rimu_47 Start: 38931, Stop: 38716, Start Num: 17
Candidate Starts for Rimu_47:
(Start: 17 @38931 has 291 MA's), (26, 38901), (32, 38856), (36, 38823),

Gene: Riverton_44 Start: 39203, Stop: 38988, Start Num: 17
Candidate Starts for Riverton_44:
(Start: 17 @39203 has 291 MA's), (26, 39173), (32, 39128), (36, 39095),

Gene: Robyn_44 Start: 38766, Stop: 38551, Start Num: 17
Candidate Starts for Robyn_44:
(4, 38868), (Start: 17 @38766 has 291 MA's), (26, 38736), (32, 38691),

Gene: Roliet_45 Start: 39191, Stop: 38976, Start Num: 17
Candidate Starts for Roliet_45:
(Start: 17 @39191 has 291 MA's), (26, 39161), (32, 39116),

Gene: Roscoe_46 Start: 39429, Stop: 39214, Start Num: 17
Candidate Starts for Roscoe_46:
(4, 39531), (Start: 17 @39429 has 291 MA's), (26, 39399), (32, 39354),

Gene: Roy17_45 Start: 38895, Stop: 38680, Start Num: 17
Candidate Starts for Roy17_45:
(Start: 17 @38895 has 291 MA's), (26, 38865), (32, 38820), (36, 38787),

Gene: Rubeelu_32 Start: 26751, Stop: 26518, Start Num: 24
Candidate Starts for Rubeelu_32:
(7, 26826), (8, 26823), (10, 26817), (21, 26760), (Start: 24 @26751 has 2 MA's), (30, 26727), (34, 26679), (41, 26601), (44, 26529),

Gene: SDcharge11_45 Start: 39169, Stop: 38954, Start Num: 17
Candidate Starts for SDcharge11_45:
(4, 39271), (Start: 17 @39169 has 291 MA's), (26, 39139), (32, 39094),

Gene: Samaymay_45 Start: 39195, Stop: 38980, Start Num: 17
Candidate Starts for Samaymay_45:
(Start: 17 @39195 has 291 MA's), (26, 39165), (32, 39120), (36, 39087),

Gene: SassyCat97_44 Start: 38901, Stop: 38686, Start Num: 17
Candidate Starts for SassyCat97_44:
(4, 39003), (Start: 17 @38901 has 291 MA's), (26, 38871), (32, 38826),

Gene: Schadenfreude_44 Start: 38752, Stop: 38537, Start Num: 17
Candidate Starts for Schadenfreude_44:
(4, 38854), (Start: 17 @38752 has 291 MA's), (26, 38722), (32, 38677),

Gene: Schueller_44 Start: 38914, Stop: 38699, Start Num: 17
Candidate Starts for Schueller_44:
(Start: 17 @38914 has 291 MA's), (26, 38884), (32, 38839),

Gene: Scoot17C_45 Start: 39194, Stop: 38979, Start Num: 17
Candidate Starts for Scoot17C_45:
(4, 39296), (Start: 17 @39194 has 291 MA's), (26, 39164), (32, 39119),

Gene: Scrick_45 Start: 38919, Stop: 38704, Start Num: 17
Candidate Starts for Scrick_45:
(4, 39021), (Start: 17 @38919 has 291 MA's), (26, 38889), (32, 38844),

Gene: Selr12_45 Start: 38922, Stop: 38707, Start Num: 17
Candidate Starts for Selr12_45:
(4, 39024), (Start: 17 @38922 has 291 MA's), (26, 38892), (32, 38847),

Gene: Serendipitous_43 Start: 39478, Stop: 39269, Start Num: 22
Candidate Starts for Serendipitous_43:
(Start: 22 @39478 has 3 MA's), (26, 39463), (32, 39418),

Gene: Serendipity_45 Start: 39219, Stop: 39004, Start Num: 17
Candidate Starts for Serendipity_45:
(Start: 17 @39219 has 291 MA's), (26, 39189), (32, 39144), (36, 39111),

Gene: Serpentine_0045 Start: 39200, Stop: 38985, Start Num: 17
Candidate Starts for Serpentine_0045:
(Start: 17 @39200 has 291 MA's), (26, 39170), (32, 39125), (36, 39092),

Gene: Sheila_45 Start: 39237, Stop: 39022, Start Num: 17
Candidate Starts for Sheila_45:
(Start: 17 @39237 has 291 MA's), (26, 39207), (32, 39162), (36, 39129),

Gene: ShiVal_45 Start: 39193, Stop: 38978, Start Num: 17
Candidate Starts for ShiVal_45:
(4, 39295), (Start: 17 @39193 has 291 MA's), (26, 39163), (32, 39118),

Gene: Sigman_45 Start: 39185, Stop: 38970, Start Num: 17
Candidate Starts for Sigman_45:
(Start: 17 @39185 has 291 MA's), (26, 39155), (32, 39110), (36, 39077),

Gene: SilverBell_45 Start: 39215, Stop: 39000, Start Num: 17
Candidate Starts for SilverBell_45:
(Start: 17 @39215 has 291 MA's), (26, 39185), (32, 39140),

Gene: Simielle_44 Start: 38888, Stop: 38673, Start Num: 17
Candidate Starts for Simielle_44:
(Start: 17 @38888 has 291 MA's), (26, 38858), (32, 38813), (36, 38780),

Gene: SirBeauregard_45 Start: 38892, Stop: 38677, Start Num: 17
Candidate Starts for SirBeauregard_45:
(4, 38994), (Start: 17 @38892 has 291 MA's), (26, 38862), (32, 38817),

Gene: Skippy_45 Start: 39183, Stop: 38968, Start Num: 17
Candidate Starts for Skippy_45:
(4, 39285), (Start: 17 @39183 has 291 MA's), (26, 39153), (32, 39108),

Gene: Slatt_45 Start: 39209, Stop: 38994, Start Num: 17
Candidate Starts for Slatt_45:
(Start: 17 @39209 has 291 MA's), (26, 39179), (32, 39134),

Gene: Soile_45 Start: 38912, Stop: 38697, Start Num: 17
Candidate Starts for Soile_45:
(Start: 17 @38912 has 291 MA's), (26, 38882), (32, 38837), (36, 38804),

Gene: Solosis_44 Start: 38910, Stop: 38695, Start Num: 17
Candidate Starts for Solosis_44:
(Start: 17 @38910 has 291 MA's), (26, 38880), (32, 38835), (36, 38802),

Gene: Sophia_44 Start: 38910, Stop: 38695, Start Num: 17
Candidate Starts for Sophia_44:
(Start: 17 @38910 has 291 MA's), (26, 38880), (32, 38835),

Gene: Soto_45 Start: 39203, Stop: 38988, Start Num: 17
Candidate Starts for Soto_45:
(Start: 17 @39203 has 291 MA's), (26, 39173), (32, 39128),

Gene: Spartan300_45 Start: 39189, Stop: 38974, Start Num: 17
Candidate Starts for Spartan300_45:
(4, 39291), (Start: 17 @39189 has 291 MA's), (26, 39159), (32, 39114),

Gene: Squid_45 Start: 38901, Stop: 38686, Start Num: 17
Candidate Starts for Squid_45:
(4, 39003), (Start: 17 @38901 has 291 MA's), (26, 38871), (32, 38826),

Gene: Squiggle_45 Start: 38913, Stop: 38698, Start Num: 17
Candidate Starts for Squiggle_45:
(4, 39015), (Start: 17 @38913 has 291 MA's), (26, 38883), (32, 38838),

Gene: Struggle_44 Start: 38751, Stop: 38536, Start Num: 17
Candidate Starts for Struggle_44:
(4, 38853), (Start: 17 @38751 has 291 MA's), (26, 38721), (32, 38676),

Gene: Suffolk_45 Start: 39200, Stop: 38985, Start Num: 17
Candidate Starts for Suffolk_45:
(Start: 17 @39200 has 291 MA's), (26, 39170), (32, 39125),

Gene: Surely_45 Start: 39203, Stop: 38988, Start Num: 17

Candidate Starts for Surely_45:
(Start: 17 @39203 has 291 MA's), (26, 39173), (32, 39128),

Gene: Swiphy_47 Start: 39198, Stop: 38983, Start Num: 17
Candidate Starts for Swiphy_47:
(Start: 17 @39198 has 291 MA's), (26, 39168), (32, 39123),

Gene: Swish_45 Start: 39186, Stop: 38971, Start Num: 17
Candidate Starts for Swish_45:
(Start: 17 @39186 has 291 MA's), (26, 39156), (32, 39111), (36, 39078),

Gene: TallGrassMM_45 Start: 38825, Stop: 38610, Start Num: 17
Candidate Starts for TallGrassMM_45:
(Start: 17 @38825 has 291 MA's), (26, 38795), (32, 38750), (36, 38717),

Gene: Telesworld_44 Start: 38898, Stop: 38683, Start Num: 17
Candidate Starts for Telesworld_44:
(Start: 17 @38898 has 291 MA's), (26, 38868), (32, 38823), (36, 38790),

Gene: Thora_45 Start: 39202, Stop: 38987, Start Num: 17
Candidate Starts for Thora_45:
(Start: 17 @39202 has 291 MA's), (26, 39172), (32, 39127),

Gene: ThreeOh3D2_45 Start: 39200, Stop: 38985, Start Num: 17
Candidate Starts for ThreeOh3D2_45:
(4, 39302), (Start: 17 @39200 has 291 MA's), (26, 39170), (32, 39125),

Gene: Thunderbird_44 Start: 38906, Stop: 38691, Start Num: 17
Candidate Starts for Thunderbird_44:
(4, 39008), (Start: 17 @38906 has 291 MA's), (26, 38876), (32, 38831),

Gene: Timmi_44 Start: 38911, Stop: 38696, Start Num: 17
Candidate Starts for Timmi_44:
(Start: 17 @38911 has 291 MA's), (26, 38881), (32, 38836), (36, 38803),

Gene: TomBombadil_45 Start: 39196, Stop: 38981, Start Num: 17
Candidate Starts for TomBombadil_45:
(4, 39298), (Start: 17 @39196 has 291 MA's), (26, 39166), (32, 39121),

Gene: Tomlarah_45 Start: 39187, Stop: 38972, Start Num: 17
Candidate Starts for Tomlarah_45:
(4, 39289), (Start: 17 @39187 has 291 MA's), (26, 39157), (32, 39112),

Gene: Toni_44 Start: 38903, Stop: 38688, Start Num: 17
Candidate Starts for Toni_44:
(Start: 17 @38903 has 291 MA's), (26, 38873), (32, 38828), (36, 38795),

Gene: TooFast2Furius_47 Start: 39432, Stop: 39217, Start Num: 17
Candidate Starts for TooFast2Furius_47:
(4, 39534), (Start: 17 @39432 has 291 MA's), (26, 39402), (32, 39357),

Gene: Tooj_45 Start: 39260, Stop: 39045, Start Num: 17
Candidate Starts for Tooj_45:

(Start: 17 @39260 has 291 MA's), (26, 39230), (32, 39185),

Gene: True_44 Start: 38900, Stop: 38685, Start Num: 17

Candidate Starts for True_44:

(4, 39002), (Start: 17 @38900 has 291 MA's), (26, 38870), (32, 38825),

Gene: Trypo_45 Start: 39196, Stop: 38981, Start Num: 17

Candidate Starts for Trypo_45:

(4, 39298), (Start: 17 @39196 has 291 MA's), (26, 39166), (32, 39121),

Gene: TyrionL_44 Start: 38759, Stop: 38544, Start Num: 17

Candidate Starts for TyrionL_44:

(Start: 17 @38759 has 291 MA's), (26, 38729), (32, 38684), (36, 38651),

Gene: UAch1_45 Start: 39209, Stop: 38994, Start Num: 17

Candidate Starts for UAch1_45:

(Start: 17 @39209 has 291 MA's), (26, 39179), (32, 39134),

Gene: UncleHowie_45 Start: 38899, Stop: 38684, Start Num: 17

Candidate Starts for UncleHowie_45:

(4, 39001), (Start: 17 @38899 has 291 MA's), (26, 38869), (32, 38824), (36, 38791),

Gene: Usavi_45 Start: 39200, Stop: 38985, Start Num: 17

Candidate Starts for Usavi_45:

(Start: 17 @39200 has 291 MA's), (26, 39170), (32, 39125),

Gene: Vaishali24_44 Start: 38861, Stop: 38646, Start Num: 17

Candidate Starts for Vaishali24_44:

(Start: 17 @38861 has 291 MA's), (26, 38831), (32, 38786), (36, 38753),

Gene: Valjean_45 Start: 39192, Stop: 38977, Start Num: 17

Candidate Starts for Valjean_45:

(4, 39294), (Start: 17 @39192 has 291 MA's), (26, 39162), (32, 39117),

Gene: Vaticameos_41 Start: 36890, Stop: 36675, Start Num: 17

Candidate Starts for Vaticameos_41:

(Start: 17 @36890 has 291 MA's), (26, 36860), (32, 36815), (36, 36782),

Gene: Veritas_44 Start: 38762, Stop: 38547, Start Num: 17

Candidate Starts for Veritas_44:

(Start: 17 @38762 has 291 MA's), (26, 38732), (32, 38687),

Gene: VioletZ_41 Start: 39270, Stop: 39064, Start Num: 17

Candidate Starts for VioletZ_41:

(Start: 17 @39270 has 291 MA's), (26, 39249), (31, 39222), (32, 39204), (34, 39186), (37, 39156), (39, 39150),

Gene: Virapocalypse_45 Start: 39187, Stop: 38972, Start Num: 17

Candidate Starts for Virapocalypse_45:

(Start: 17 @39187 has 291 MA's), (26, 39157), (32, 39112),

Gene: Virgeve_44 Start: 38967, Stop: 38752, Start Num: 17

Candidate Starts for Virgeve_44:

(4, 39069), (Start: 17 @38967 has 291 MA's), (26, 38937), (32, 38892),

Gene: Vista_45 Start: 39200, Stop: 38985, Start Num: 17

Candidate Starts for Vista_45:

(Start: 17 @39200 has 291 MA's), (26, 39170), (32, 39125),

Gene: Vivaldi_45 Start: 39229, Stop: 39014, Start Num: 17

Candidate Starts for Vivaldi_45:

(4, 39331), (Start: 17 @39229 has 291 MA's), (26, 39199), (32, 39154),

Gene: Vortex_45 Start: 38906, Stop: 38691, Start Num: 17

Candidate Starts for Vortex_45:

(Start: 17 @38906 has 291 MA's), (26, 38876), (32, 38831), (36, 38798),

Gene: Waleliano_40 Start: 39197, Stop: 38991, Start Num: 17

Candidate Starts for Waleliano_40:

(Start: 17 @39197 has 291 MA's), (26, 39176), (31, 39149), (32, 39131), (34, 39113), (37, 39083), (39, 39077),

Gene: Wallhey_44 Start: 38763, Stop: 38548, Start Num: 17

Candidate Starts for Wallhey_44:

(Start: 17 @38763 has 291 MA's), (26, 38733), (32, 38688), (36, 38655),

Gene: Waterdiva_45 Start: 39192, Stop: 38977, Start Num: 17

Candidate Starts for Waterdiva_45:

(Start: 17 @39192 has 291 MA's), (26, 39162), (32, 39117),

Gene: Weher20_45 Start: 39191, Stop: 38976, Start Num: 17

Candidate Starts for Weher20_45:

(Start: 17 @39191 has 291 MA's), (26, 39161), (32, 39116),

Gene: Windsor_44 Start: 38896, Stop: 38681, Start Num: 17

Candidate Starts for Windsor_44:

(4, 38998), (Start: 17 @38896 has 291 MA's), (26, 38866), (32, 38821),

Gene: Xavier_44 Start: 38913, Stop: 38698, Start Num: 17

Candidate Starts for Xavier_44:

(Start: 17 @38913 has 291 MA's), (26, 38883), (32, 38838), (36, 38805),

Gene: Xincheng_39 Start: 38653, Stop: 38447, Start Num: 17

Candidate Starts for Xincheng_39:

(Start: 17 @38653 has 291 MA's), (26, 38632), (31, 38605), (32, 38587), (34, 38569), (37, 38539), (39, 38533),

Gene: Yoshand_45 Start: 39199, Stop: 38984, Start Num: 17

Candidate Starts for Yoshand_45:

(Start: 17 @39199 has 291 MA's), (26, 39169), (32, 39124), (36, 39091),

Gene: YouGoGlencoco_45 Start: 39194, Stop: 38979, Start Num: 17

Candidate Starts for YouGoGlencoco_45:

(Start: 17 @39194 has 291 MA's), (26, 39164), (32, 39119),

Gene: Zaider_46 Start: 39424, Stop: 39209, Start Num: 17

Candidate Starts for Zaider_46:

(Start: 17 @39424 has 291 MA's), (26, 39394), (32, 39349),

Gene: Zelda_45 Start: 39241, Stop: 39026, Start Num: 17

Candidate Starts for Zelda_45:

(Start: 17 @39241 has 291 MA's), (26, 39211), (32, 39166),

Gene: Zemanar_41 Start: 39200, Stop: 38994, Start Num: 17

Candidate Starts for Zemanar_41:

(Start: 17 @39200 has 291 MA's), (26, 39179), (31, 39152), (32, 39134), (34, 39116), (37, 39086), (39, 39080),

Gene: Zonia_45 Start: 39213, Stop: 38998, Start Num: 17

Candidate Starts for Zonia_45:

(Start: 17 @39213 has 291 MA's), (26, 39183), (32, 39138), (36, 39105),