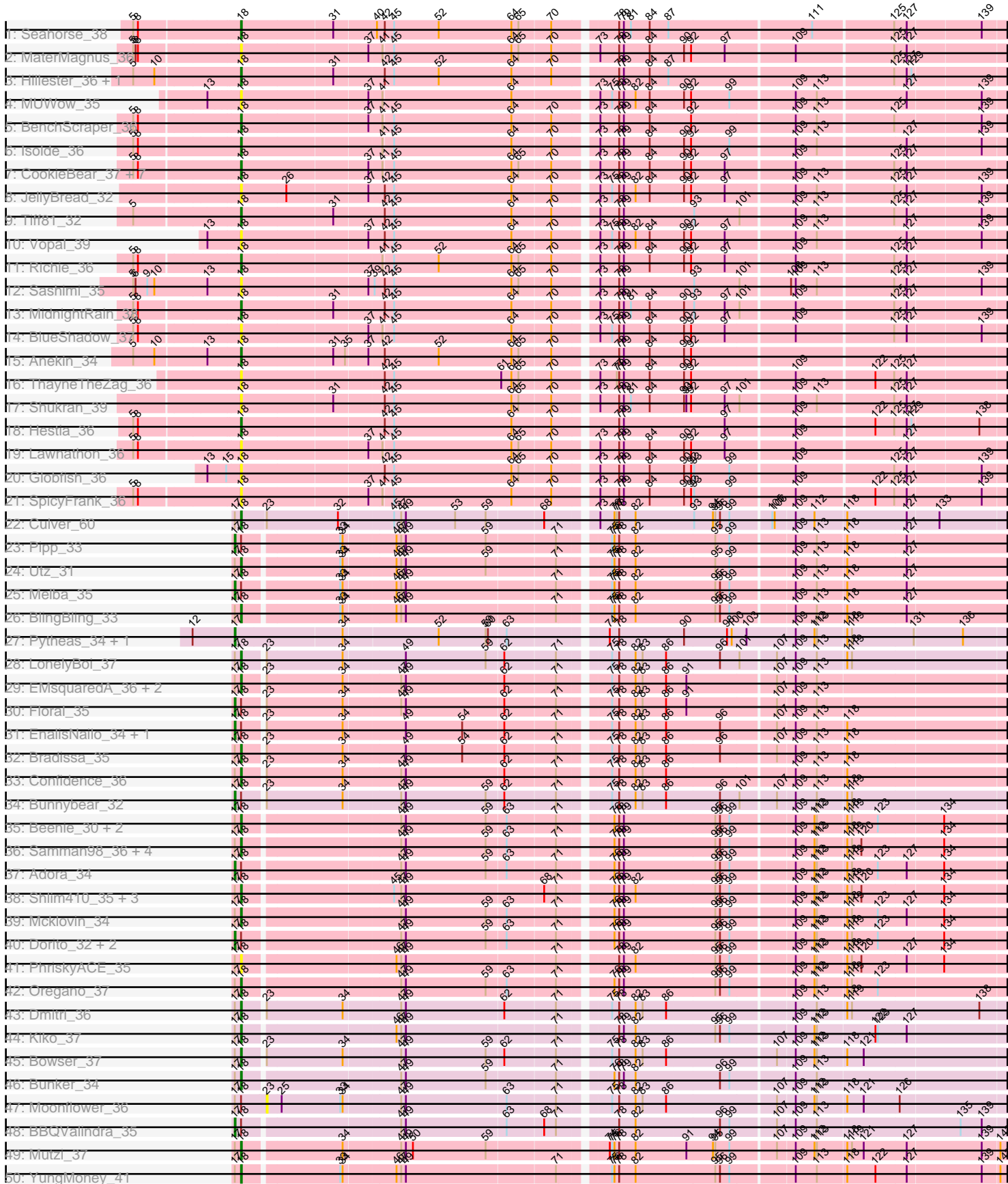
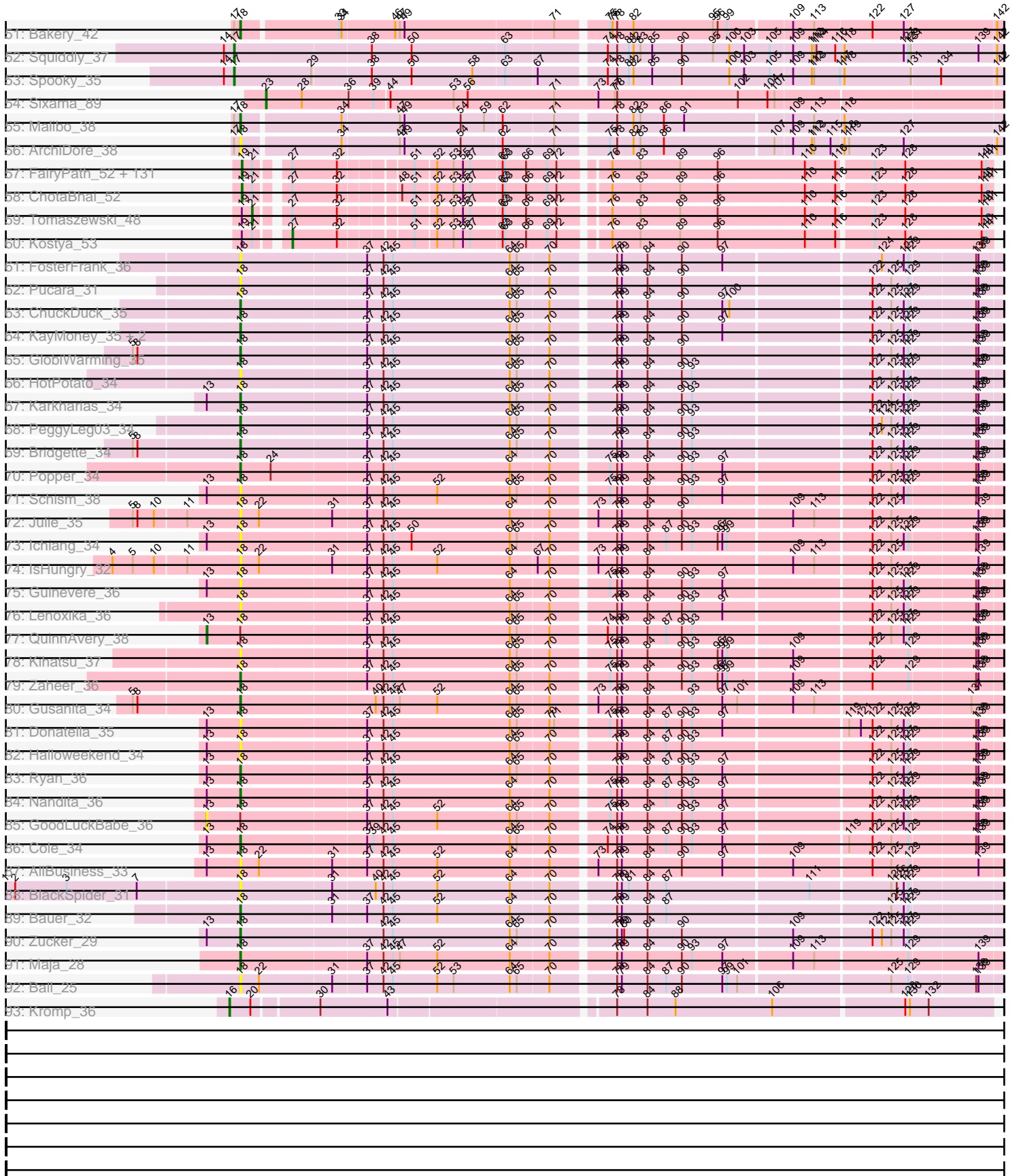


Pham 213960



Pham 213960



Note: Tracks are now grouped by subcluster and scaled. Switching in subcluster is indicated by changes in track color. Track scale is now set by default to display the region 30 bp upstream of start 1 to 30 bp downstream of the last possible start. If this default region is judged to be packed too tightly with annotated starts, the track will be further scaled to only show that region of the ORF with annotated starts. This action will be indicated by adding "Zoomed" to the title. For starts, yellow indicates the location of called starts comprised solely of Glimmer/GeneMark auto-annotations, green indicates the location of called starts with at least 1 manual gene annotation.

Pham 213960 Report

This analysis was run 02/22/25 on database version 588.

WARNING: Pham size does not match number of genes in report. Either unphamerated genes have been added (by you) or starterator has removed genes due to invalid start codon.

Pham number 213960 has 249 members, 46 are drafts.

Phages represented in each track:

- Track 1 : Seahorse_38
- Track 2 : MaterMagnus_36
- Track 3 : Hillester_36, RadFad_36
- Track 4 : MUWow_35
- Track 5 : BenchScraper_36
- Track 6 : Isolde_36
- Track 7 : CookieBear_37, Sakai_36, Aikyam_33, Auxilium_34, BillyTP_37, Raphaella_36, Gorpy_37, YoungHarleezy_36
- Track 8 : JellyBread_32
- Track 9 : Tiff81_32
- Track 10 : Vopal_39
- Track 11 : Richie_36
- Track 12 : Sashimi_35
- Track 13 : MidnightRain_38
- Track 14 : BlueShadow_37
- Track 15 : Anekin_34
- Track 16 : ThayneTheZag_36
- Track 17 : Shukran_39
- Track 18 : Hestia_36
- Track 19 : Lawnathon_36
- Track 20 : Globfish_36
- Track 21 : SpicyFrank_36
- Track 22 : Culver_60
- Track 23 : Pipp_33
- Track 24 : Utz_31
- Track 25 : Melba_35
- Track 26 : BlingBling_33
- Track 27 : Pytheas_34, Jablanski_34
- Track 28 : LonelyBoi_37
- Track 29 : EMSquaredA_36, Marteena_35, Pollux_37
- Track 30 : Floral_35
- Track 31 : EnalisNailo_34, Lilas_37
- Track 32 : Bradissa_35

- Track 33 : Confidence_36
- Track 34 : Bunnybear_32
- Track 35 : Beenie_30, Invecetra_37, MichaelScott_36
- Track 36 : Samman98_36, Annalisa_34, Dolores_37, Thimann_34, WinkNick_38
- Track 37 : Adora_34
- Track 38 : Shlim410_35, Howe_36, Hortense_36, Twinkle_35
- Track 39 : Mcklovin_34
- Track 40 : Dorito_32, DobbysSock_30, Clark_36
- Track 41 : PhriskyACE_35
- Track 42 : Oregano_37
- Track 43 : Dmitri_36
- Track 44 : Kiko_37
- Track 45 : Bowser_37
- Track 46 : Bunker_34
- Track 47 : Moonflower_36
- Track 48 : BBQValindra_35
- Track 49 : Mutzi_37
- Track 50 : YungMoney_41
- Track 51 : Bakery_42
- Track 52 : Squiddly_37
- Track 53 : Spooky_35
- Track 54 : Sixama_89
- Track 55 : Malibo_38
- Track 56 : ArchiDore_38
- Track 57 : FairyPath_52, Henry_51, Phaja_50, ABCat_50, Argent26_55, RiverMonster_53, SirDuracell_51, Wiggin_54, Simpliphy_51, GooberAzure_55, SophKB_49, Xandras_52, Cjw1_52, Goldilocks_54, Holt_57, StolenFromERC_55, BugsBunny_53, Paperbeatsrock_51, Murica_54, Filch_53, Murphy_54, Moldemort_55, Policronamos_55, Nimrod_55, Contagion_49, Cookies_49, BilboSwaggins_51, MadamMonkfish_52, Saints25_53, Bask21_53, Barbarian_52, Dumbo_52, Gator_50, Phrux_50, Stank_56, Elite2014_52, Flypotenuse_47, Lilac_55, Emmina_52, FoghornLeghorn_47, DrDrey_52, JeTaimie_53, Thimble_54, MISSy_52, Miniwave_49, Phaux_54, Czyszczonek_53, Porky_51, Gage_55, Buck_53, Amao_52, StellaBean_50, Bruin_48, NoSleep_54, Glexan_50, xkcd_56, Nala_53, Asriel_52, Tarkin_51, Willez_46, Adnama_56, DoctorDiddles_52, Petra64142_57, ShamWow_52, Lilpickle_52, Pat3_50, Rimmer_53, BigBubba_53, FireRed_55, Lilizi_52, Tuco_53, IHOP_50, Hopey_52, GoldenSpark_55, ShereKhan_50, 244_53, HanKaySha_51, Traaww1_48, Thresher_55, OrionPax_51, Easy2Say_53, Harella_52, Youngblood_54, Becksu_53, Quallification_53, Rakim_54, Palpatine_55, Terminus_54, AmericanBeauty_56, Sassay_46, Gemini_56, Bench_54, Pharsalus_50, Balomoji_51, Mosby_48, Dusk_50, Pumpkin_54, StormChicken_54, Highbury_53, YassJohnny_48, CrystalP_52, Stark_53, Mindy_51, Hoonter_55, Kimchi_55, Myrale_52, NelitzaMV_49, Command613_54, Misfit_54, Daikon_53, TBrady12_55, Icee_52, BadStone_50, MPhalcon_52, Maxxinista_55, Marshmallow_51, TeardropMSU_48, Toto_51, Kanye_48, Elph10_52, ChosenOne_53, Teaspoon_53, Goku_50, HufflyPuff_54, Sotrice96_53, Inca_49, Manda_52, Ukulele_49, BaboJay_48, Cactus_54, PhatBacter_55, Eureka_50
- Track 58 : ChotaBhai_52
- Track 59 : Tomaszewski_48
- Track 60 : Kostya_53
- Track 61 : FosterFrank_36
- Track 62 : Pucara_31
- Track 63 : ChuckDuck_35

- Track 64 : KayMoney_35, Constance_34, Judy_35
- Track 65 : GlobiWarming_35
- Track 66 : HotPotato_34
- Track 67 : Karkharias_34
- Track 68 : PeggyLeg03_34
- Track 69 : Bridgette_34
- Track 70 : Popper_34
- Track 71 : Schism_38
- Track 72 : Julie_35
- Track 73 : Ichiang_34
- Track 74 : IsHungry_32
- Track 75 : Guinevere_36
- Track 76 : Lenoxika_36
- Track 77 : QuinnAvery_38
- Track 78 : Kihatsu_37
- Track 79 : Zaheer_36
- Track 80 : Gusanita_34
- Track 81 : Donatella_35
- Track 82 : Halloweekend_34
- Track 83 : Ryan_36
- Track 84 : Nandita_36
- Track 85 : GoodLuckBabe_36
- Track 86 : Cole_34
- Track 87 : AllBusiness_33
- Track 88 : BlackSpider_31
- Track 89 : Bauer_32
- Track 90 : Zucker_29
- Track 91 : Maja_28
- Track 92 : Ball_25
- Track 93 : Kromp_36

Summary of Final Annotations (See graph section above for start numbers):

The start number called the most often in the published annotations is 19, it was called in 123 of the 203 non-draft genes in the pham.

Genes that call this "Most Annotated" start:

- 244_53, ABCat_50, Adnama_56, Amao_52, AmericanBeauty_56, Argent26_55, Asriel_52, BaboJay_48, BadStone_50, Balomoji_51, Barbarian_52, Bask21_53, Becksu_53, Bench_54, BigBubba_53, BilboSwaggins_51, Bruin_48, Buck_53, BugsBunny_53, Cactus_54, ChosenOne_53, ChotaBhai_52, Cjw1_52, Command613_54, Contagion_49, Cookies_49, CrystalP_52, Czystczon1_53, Daikon_53, DoctorDiddles_52, DrDrey_52, Dumbo_52, Dusk_50, Easy2Say_53, Elite2014_52, Elph10_52, Emmina_52, Eureka_50, FairyPath_52, Filch_53, FireRed_55, Flypotenuse_47, FoghornLeghorn_47, Gage_55, Gator_50, Gemini_56, Glexan_50, Goku_50, GoldenSpark_55, Goldilocks_54, GooberAzure_55, HanKaySha_51, Harella_52, Henry_51, Highbury_53, Holt_57, Hoonter_55, Hopey_52, HufflyPuff_54, IHOP_50, Icee_52, Inca_49, JeTaime_53, Kanye_48, Kimchi_55, Lilac_55, Lilizi_52, Lilpickle_52, MISSy_52, MPhalcon_52, MadamMonkfish_52, Manda_52, Marshmallow_51, Maxxinista_55, Mindy_51,

Miniwave_49, Misfit_54, Moldemort_55, Mosby_48, Murica_54, Murphy_54, Myrale_52, Nala_53, NelitzaMV_49, Nimrod_55, NoSleep_54, OrionPax_51, Palpatine_55, Paperbeatsrock_51, Pat3_50, Petra64142_57, Phaja_50, Pharsalus_50, PhatBacter_55, Phaux_54, Phrux_50, Policronamos_55, Porky_51, Pumpkin_54, Quallification_53, Rakim_54, Rimmer_53, RiverMonster_53, Saints25_53, Sassay_46, ShamWow_52, ShereKhan_50, Simpliphy_51, SirDuracell_51, SophKB_49, Sotrice96_53, Stank_56, Stark_53, StellaBean_50, StolenFromERC_55, StormChicken_54, TBrady12_55, Tarkin_51, TeardropMSU_48, Teaspoon_53, Terminus_54, Thimble_54, Thresher_55, Toto_51, Traaww1_48, Tuco_53, Ukulele_49, Wiggin_54, Willez_46, Xandras_52, YassJohnny_48, Youngblood_54, xkcd_56,

Genes that have the "Most Annotated" start but do not call it:

- Kostya_53, Tomaszewski_48,

Genes that do not have the "Most Annotated" start:

- Adora_34, Aikyam_33, AllBusiness_33, Anekin_34, Annalisa_34, ArchiDore_38, Auxilium_34, BBQValindra_35, Bakery_42, Ball_25, Bauer_32, Beenie_30, BenchScraper_36, BillyTP_37, BlackSpider_31, BlingBling_33, BlueShadow_37, Bowser_37, Bradissa_35, Bridgette_34, Bunker_34, Bunnybear_32, ChuckDuck_35, Clark_36, Cole_34, Confidence_36, Constance_34, CookieBear_37, Culver_60, Dmitri_36, DobbysSock_30, Dolores_37, Donatella_35, Dorito_32, EMsquaredA_36, EnalisNailo_34, Floral_35, FosterFrank_36, Globfish_36, GlobiWarming_35, GoodLuckBabe_36, Gorpy_37, Guinevere_36, Gusanita_34, Halloweekend_34, Hestia_36, Hillester_36, Hortense_36, HotPotato_34, Howe_36, Ichiang_34, Invectra_37, IsHungry_32, Isolde_36, Jablanski_34, JellyBread_32, Judy_35, Julie_35, Karkharias_34, KayMoney_35, Kihatsu_37, Kiko_37, Kromp_36, Lawnathon_36, Lenoxika_36, Lilas_37, LonelyBoi_37, MUWow_35, Maja_28, Malibo_38, Marteena_35, MaterMagnus_36, Mcklovin_34, Melba_35, MichaelScott_36, MidnightRain_38, Moonflower_36, Mutzi_37, Nandita_36, Oregano_37, PeggyLeg03_34, PhriskyACE_35, Pipp_33, Pollux_37, Popper_34, Pucara_31, Pytheas_34, QuinnAvery_38, RadFad_36, Raphaella_36, Richie_36, Ryan_36, Sakai_36, Samman98_36, Sashimi_35, Schism_38, Seahorse_38, Shlim410_35, Shukran_39, Sixama_89, SpicyFrank_36, Spooky_35, Squiddly_37, ThayneTheZag_36, Thimann_34, Tiff81_32, Twinkle_35, Utz_31, Vopal_39, WinkNick_38, YoungHarleezy_36, YungMoney_41, Zaheer_36, Zucker_29,

Summary by start number:

Start 13:

- Found in 18 of 249 (7.2%) of genes in pham
- Manual Annotations of this start: 1 of 203
- Called 11.1% of time when present
- Phage (with cluster) where this start called: GoodLuckBabe_36 (FF), QuinnAvery_38 (FF),

Start 16:

- Found in 1 of 249 (0.4%) of genes in pham
- Manual Annotations of this start: 1 of 203
- Called 100.0% of time when present
- Phage (with cluster) where this start called: Kromp_36 (singleton),

Start 17:

- Found in 49 of 249 (19.7%) of genes in pham
- Manual Annotations of this start: 15 of 203
- Called 30.6% of time when present
- Phage (with cluster) where this start called: Adora_34 (CZ4), BBQValindra_35 (DB), Bunnybear_32 (CZ), Clark_36 (CZ4), DobbysSock_30 (CZ4), Dorito_32 (CZ4), EnalisNailo_34 (CY1), Floral_35 (CY1), Jablanski_34 (CY), Lilas_37 (CY1), Melba_35 (CV), Pipp_33 (CV), Pytheas_34 (CY), Spooky_35 (DN2), Squiddly_37 (DN2),

Start 18:

- Found in 108 of 249 (43.4%) of genes in pham
- Manual Annotations of this start: 60 of 203
- Called 87.0% of time when present
- Phage (with cluster) where this start called: Aikyam_33 (AY), AllBusiness_33 (FF), Anekin_34 (AY), Annalisa_34 (CZ4), ArchiDore_38 (DW), Auxilium_34 (AY), Bakery_42 (DC1), Ball_25 (singleton), Bauer_32 (FN), Beenie_30 (CZ4), BenchScraper_36 (AY), BillyTP_37 (AY), BlackSpider_31 (FN), BlingBling_33 (CV), BlueShadow_37 (AY), Bowser_37 (DB), Bradissa_35 (CY1), Bridgette_34 (FA), Bunker_34 (DB), ChuckDuck_35 (FA), Cole_34 (FF), Confidence_36 (CY1), Constance_34 (FA), CookieBear_37 (AY), Culver_60 (CQ1), Dmitri_36 (DB), Dolores_37 (CZ4), Donatella_35 (FF), EMSquaredA_36 (CY1), FosterFrank_36 (FA), Globfish_36 (AY), GlobiWarming_35 (FA), Gorpy_37 (AY), Guinevere_36 (FF), Gusanita_34 (FF), Halloween_34 (FF), Hestia_36 (AY), Hillester_36 (AY), Hortense_36 (CZ4), HotPotato_34 (FA), Howe_36 (CZ4), Ichiang_34 (FF), Invectra_37 (CZ4), IsHungry_32 (FF), Isolde_36 (AY), JellyBread_32 (AY), Judy_35 (FA), Julie_35 (FF), Karkharias_34 (FA), KayMoney_35 (FA), Kihatsu_37 (FF), Kiko_37 (DB), Lawnathon_36 (AY), Lenoxika_36 (FF), LonelyBoi_37 (CY), MUWow_35 (AY), Maja_28 (FO), Malibo_38 (DW), Marteenaa_35 (CY1), MaterMagnus_36 (AY), Mcklovin_34 (CZ4), MichaelScott_36 (CZ4), MidnightRain_38 (AY), Mutzi_37 (DC1), Nandita_36 (FF), Oregano_37 (CZ4), PeggyLeg03_34 (FA), PhriskyACE_35 (CZ4), Pollux_37 (CY1), Popper_34 (FF), Pucara_31 (FA), RadFad_36 (AY), Raphaella_36 (AY), Richie_36 (AY), Ryan_36 (FF), Sakai_36 (AY), Samman98_36 (CZ4), Sashimi_35 (AY), Schism_38 (FF), Seahorse_38 (AY), Shlim410_35 (CZ4), Shukran_39 (AY), SpicyFrank_36 (AY), ThayneTheZag_36 (AY), Thimann_34 (CZ4), Tiff81_32 (AY), Twinkle_35 (CZ4), Utz_31 (CV), Vopal_39 (AY), WinkNick_38 (CZ4), YoungHarleezy_36 (AY), YungMoney_41 (DC1), Zaheer_36 (FF), Zucker_29 (FN),

Start 19:

- Found in 135 of 249 (54.2%) of genes in pham
- Manual Annotations of this start: 123 of 203
- Called 98.5% of time when present
- Phage (with cluster) where this start called: 244_53 (E), ABCat_50 (E), Adnama_56 (E), Amao_52 (E), AmericanBeauty_56 (E), Argent26_55 (E), Asriel_52 (E), BaboJay_48 (E), BadStone_50 (E), Balomoji_51 (E), Barbarian_52 (E), Bask21_53 (E), Becksu_53 (E), Bench_54 (E), BigBubba_53 (E), BilboSwaggins_51 (E), Bruin_48 (E), Buck_53 (E), BugsBunny_53 (E), Cactus_54 (E), ChosenOne_53 (E), ChotaBhai_52 (E), Cjw1_52 (E), Command613_54 (E), Contagion_49 (E), Cookies_49 (E), CrystalP_52 (E), Czczyszczon1_53 (E), Daikon_53 (E), DoctorDiddles_52 (E), DrDrey_52 (E), Dumbo_52 (E), Dusk_50 (E), Easy2Say_53 (E), Elite2014_52 (E), Elph10_52 (E), Emmina_52 (E), Eureka_50 (E), FairyPath_52 (E), Filch_53 (E), FireRed_55 (E), Flypotenuse_47 (E), FoghornLeghorn_47 (E), Gage_55 (E), Gator_50 (E), Gemini_56 (E), Glexan_50 (E), Goku_50 (E), GoldenSpark_55 (E), Goldilocks_54 (E), GooberAzure_55 (E), HanKaySha_51 (E),

Harella_52 (E), Henry_51 (E), Highbury_53 (E), Holt_57 (E), Hoonter_55 (E), Hopey_52 (E), HuffyPuff_54 (E), IHOP_50 (E), Icee_52 (E), Inca_49 (E), JeTaimé_53 (E), Kanye_48 (E), Kimchi_55 (E), Lilac_55 (E), Lilizi_52 (E), Lilpickle_52 (E), MISSy_52 (E), MPhalcon_52 (E), MadamMonkfish_52 (E), Manda_52 (E), Marshmallow_51 (E), Maxxinista_55 (E), Mindy_51 (E), Miniwave_49 (E), Misfit_54 (E), Moldemort_55 (E), Mosby_48 (E), Murica_54 (E), Murphy_54 (E), Myrale_52 (E), Nala_53 (E), NelitzaMV_49 (E), Nimrod_55 (E), NoSleep_54 (E), OrionPax_51 (E), Palpatine_55 (E), Paperbeatsrock_51 (E), Pat3_50 (E), Petra64142_57 (E), Phaja_50 (E), Pharsalus_50 (E), PhatBacter_55 (E), Phaux_54 (E), Phrux_50 (E), Policronamos_55 (E), Porky_51 (E), Pumpkin_54 (E), Quallification_53 (E), Rakim_54 (E), Rimmer_53 (E), RiverMonster_53 (E), Saints25_53 (E), Sassay_46 (E), ShamWow_52 (E), ShereKhan_50 (E), Simpliphy_51 (E), SirDuracell_51 (E), SophKB_49 (E), Sotrice96_53 (E), Stank_56 (E), Stark_53 (E), StellaBean_50 (E), StolenFromERC_55 (E), StormChicken_54 (E), TBrady12_55 (E), Tarkin_51 (E), TeardropMSU_48 (E), Teaspoon_53 (E), Terminus_54 (E), Thimble_54 (E), Thresher_55 (E), Toto_51 (E), Traaww1_48 (E), Tuco_53 (E), Ukulele_49 (E), Wiggin_54 (E), Willez_46 (E), Xandras_52 (E), YassJohnny_48 (E), Youngblood_54 (E), xkcd_56 (E),

Start 21:

- Found in 135 of 249 (54.2%) of genes in pham
- Manual Annotations of this start: 1 of 203
- Called 0.7% of time when present
- Phage (with cluster) where this start called: Tomaszewski_48 (E),

Start 23:

- Found in 15 of 249 (6.0%) of genes in pham
- Manual Annotations of this start: 1 of 203
- Called 13.3% of time when present
- Phage (with cluster) where this start called: Moonflower_36 (DB), Sixama_89 (DS),

Start 27:

- Found in 135 of 249 (54.2%) of genes in pham
- Manual Annotations of this start: 1 of 203
- Called 0.7% of time when present
- Phage (with cluster) where this start called: Kostya_53 (E),

Summary by clusters:

There are 18 clusters represented in this pham: CY1, E, CZ, DB, singleton, CZ4, DS, FA, CY, FF, DN2, AY, DW, CQ1, DC1, CV, FN, FO,

Info for manual annotations of cluster AY:

- Start number 18 was manually annotated 14 times for cluster AY.

Info for manual annotations of cluster CQ1:

- Start number 18 was manually annotated 1 time for cluster CQ1.

Info for manual annotations of cluster CV:

- Start number 17 was manually annotated 2 times for cluster CV.
- Start number 18 was manually annotated 2 times for cluster CV.

Info for manual annotations of cluster CY:

- Start number 17 was manually annotated 2 times for cluster CY.
- Start number 18 was manually annotated 1 time for cluster CY.

Info for manual annotations of cluster CY1:

- Start number 17 was manually annotated 3 times for cluster CY1.
- Start number 18 was manually annotated 5 times for cluster CY1.

Info for manual annotations of cluster CZ:

- Start number 17 was manually annotated 1 time for cluster CZ.

Info for manual annotations of cluster CZ4:

- Start number 17 was manually annotated 4 times for cluster CZ4.
- Start number 18 was manually annotated 13 times for cluster CZ4.

Info for manual annotations of cluster DB:

- Start number 17 was manually annotated 1 time for cluster DB.
- Start number 18 was manually annotated 4 times for cluster DB.

Info for manual annotations of cluster DC1:

- Start number 18 was manually annotated 3 times for cluster DC1.

Info for manual annotations of cluster DN2:

- Start number 17 was manually annotated 2 times for cluster DN2.

Info for manual annotations of cluster DS:

- Start number 23 was manually annotated 1 time for cluster DS.

Info for manual annotations of cluster DW:

- Start number 18 was manually annotated 1 time for cluster DW.

Info for manual annotations of cluster E:

- Start number 19 was manually annotated 123 times for cluster E.
- Start number 21 was manually annotated 1 time for cluster E.
- Start number 27 was manually annotated 1 time for cluster E.

Info for manual annotations of cluster FA:

- Start number 18 was manually annotated 7 times for cluster FA.

Info for manual annotations of cluster FF:

- Start number 13 was manually annotated 1 time for cluster FF.
- Start number 18 was manually annotated 6 times for cluster FF.

Info for manual annotations of cluster FN:

- Start number 18 was manually annotated 2 times for cluster FN.

Info for manual annotations of cluster FO:

- Start number 18 was manually annotated 1 time for cluster FO.

Gene Information:

Gene: 244_53 Start: 37711, Stop: 38592, Start Num: 19

Candidate Starts for 244_53:

(Start: 19 @37711 has 123 MA's), (Start: 21 @37723 has 1 MA's), (Start: 27 @37753 has 1 MA's), (32, 37810), (51, 37891), (52, 37915), (53, 37936), (55, 37948), (57, 37957), (62, 37996), (63, 37999), (66, 38026), (69, 38053), (72, 38065), (76, 38119), (83, 38155), (89, 38206), (96, 38254), (110, 38362), (116, 38401), (123, 38443), (128, 38482), (140, 38578), (141, 38584),

Gene: ABCat_50 Start: 38357, Stop: 39238, Start Num: 19

Candidate Starts for ABCat_50:

(Start: 19 @38357 has 123 MA's), (Start: 21 @38369 has 1 MA's), (Start: 27 @38399 has 1 MA's), (32, 38456), (51, 38537), (52, 38561), (53, 38582), (55, 38594), (57, 38603), (62, 38642), (63, 38645), (66, 38672), (69, 38699), (72, 38711), (76, 38765), (83, 38801), (89, 38852), (96, 38900), (110, 39008), (116, 39047), (123, 39089), (128, 39128), (140, 39224), (141, 39230),

Gene: Adnama_56 Start: 38380, Stop: 39261, Start Num: 19

Candidate Starts for Adnama_56:

(Start: 19 @38380 has 123 MA's), (Start: 21 @38392 has 1 MA's), (Start: 27 @38422 has 1 MA's), (32, 38479), (51, 38560), (52, 38584), (53, 38605), (55, 38617), (57, 38626), (62, 38665), (63, 38668), (66, 38695), (69, 38722), (72, 38734), (76, 38788), (83, 38824), (89, 38875), (96, 38923), (110, 39031), (116, 39070), (123, 39112), (128, 39151), (140, 39247), (141, 39253),

Gene: Adora_34 Start: 29404, Stop: 30327, Start Num: 17

Candidate Starts for Adora_34:

(Start: 17 @29404 has 15 MA's), (Start: 18 @29410 has 60 MA's), (47, 29599), (49, 29605), (59, 29707), (63, 29731), (71, 29791), (76, 29848), (78, 29854), (79, 29860), (95, 29974), (96, 29980), (99, 29992), (109, 30067), (112, 30091), (113, 30094), (118, 30130), (119, 30136), (123, 30169), (127, 30205), (134, 30250),

Gene: Aikyam_33 Start: 22410, Stop: 23327, Start Num: 18

Candidate Starts for Aikyam_33:

(5, 22281), (8, 22287), (Start: 18 @22410 has 60 MA's), (37, 22566), (41, 22581), (45, 22593), (64, 22740), (65, 22749), (70, 22788), (73, 22833), (78, 22857), (79, 22863), (84, 22896), (90, 22938), (92, 22947), (97, 22989), (109, 23073), (125, 23193), (127, 23208),

Gene: AllBusiness_33 Start: 27251, Stop: 28171, Start Num: 18

Candidate Starts for AllBusiness_33:

(Start: 13 @27209 has 1 MA's), (Start: 18 @27251 has 60 MA's), (22, 27275), (31, 27365), (37, 27407), (42, 27425), (45, 27437), (52, 27494), (64, 27584), (70, 27632), (73, 27677), (78, 27701), (79, 27707), (84, 27740), (90, 27782), (97, 27833), (109, 27917), (122, 28013), (125, 28037), (129, 28058), (139, 28142),

Gene: Amao_52 Start: 37475, Stop: 38356, Start Num: 19

Candidate Starts for Amao_52:

(Start: 19 @37475 has 123 MA's), (Start: 21 @37487 has 1 MA's), (Start: 27 @37517 has 1 MA's), (32, 37574), (51, 37655), (52, 37679), (53, 37700), (55, 37712), (57, 37721), (62, 37760), (63, 37763), (66, 37790), (69, 37817), (72, 37829), (76, 37883), (83, 37919), (89, 37970), (96, 38018), (110, 38126), (116, 38165), (123, 38207), (128, 38246), (140, 38342), (141, 38348),

Gene: AmericanBeauty_56 Start: 38225, Stop: 39106, Start Num: 19

Candidate Starts for AmericanBeauty_56:

(Start: 19 @38225 has 123 MA's), (Start: 21 @38237 has 1 MA's), (Start: 27 @38267 has 1 MA's), (32, 38324), (51, 38405), (52, 38429), (53, 38450), (55, 38462), (57, 38471), (62, 38510), (63, 38513), (66, 38540), (69, 38567), (72, 38579), (76, 38633), (83, 38669), (89, 38720), (96, 38768), (110, 38876), (116, 38915), (123, 38957), (128, 38996), (140, 39092), (141, 39098),

Gene: Anekin_34 Start: 24275, Stop: 25195, Start Num: 18

Candidate Starts for Anekin_34:

(5, 24146), (10, 24173), (Start: 13 @24233 has 1 MA's), (Start: 18 @24275 has 60 MA's), (31, 24389), (35, 24404), (37, 24431), (42, 24449), (52, 24518), (64, 24608), (65, 24617), (70, 24656), (78, 24725), (79, 24731), (84, 24764), (90, 24806), (92, 24815),

Gene: Annalisa_34 Start: 27182, Stop: 28099, Start Num: 18

Candidate Starts for Annalisa_34:

(Start: 17 @27176 has 15 MA's), (Start: 18 @27182 has 60 MA's), (47, 27371), (49, 27377), (59, 27479), (63, 27503), (71, 27563), (76, 27620), (78, 27626), (79, 27632), (95, 27746), (96, 27752), (99, 27764), (109, 27839), (112, 27863), (113, 27866), (118, 27902), (119, 27908), (120, 27920), (134, 28022),

Gene: ArchiDore_38 Start: 30835, Stop: 31752, Start Num: 18

Candidate Starts for ArchiDore_38:

(Start: 17 @30829 has 15 MA's), (Start: 18 @30835 has 60 MA's), (34, 30955), (47, 31024), (49, 31030), (54, 31102), (62, 31153), (71, 31216), (75, 31270), (78, 31279), (82, 31300), (83, 31309), (86, 31339), (107, 31471), (109, 31492), (112, 31516), (113, 31519), (115, 31540), (118, 31555), (119, 31561), (127, 31630), (142, 31744),

Gene: Argent26_55 Start: 37863, Stop: 38744, Start Num: 19

Candidate Starts for Argent26_55:

(Start: 19 @37863 has 123 MA's), (Start: 21 @37875 has 1 MA's), (Start: 27 @37905 has 1 MA's), (32, 37962), (51, 38043), (52, 38067), (53, 38088), (55, 38100), (57, 38109), (62, 38148), (63, 38151), (66, 38178), (69, 38205), (72, 38217), (76, 38271), (83, 38307), (89, 38358), (96, 38406), (110, 38514), (116, 38553), (123, 38595), (128, 38634), (140, 38730), (141, 38736),

Gene: Asriel_52 Start: 36717, Stop: 37598, Start Num: 19

Candidate Starts for Asriel_52:

(Start: 19 @36717 has 123 MA's), (Start: 21 @36729 has 1 MA's), (Start: 27 @36759 has 1 MA's), (32, 36816), (51, 36897), (52, 36921), (53, 36942), (55, 36954), (57, 36963), (62, 37002), (63, 37005), (66, 37032), (69, 37059), (72, 37071), (76, 37125), (83, 37161), (89, 37212), (96, 37260), (110, 37368), (116, 37407), (123, 37449), (128, 37488), (140, 37584), (141, 37590),

Gene: Auxilium_34 Start: 22112, Stop: 23029, Start Num: 18

Candidate Starts for Auxilium_34:

(5, 21983), (8, 21989), (Start: 18 @22112 has 60 MA's), (37, 22268), (41, 22283), (45, 22295), (64, 22442), (65, 22451), (70, 22490), (73, 22535), (78, 22559), (79, 22565), (84, 22598), (90, 22640), (92, 22649), (97, 22691), (109, 22775), (125, 22895), (127, 22910),

Gene: BBQValindra_35 Start: 29573, Stop: 30496, Start Num: 17

Candidate Starts for BBQValindra_35:

(Start: 17 @29573 has 15 MA's), (Start: 18 @29579 has 60 MA's), (47, 29768), (49, 29774), (63, 29900), (68, 29945), (71, 29960), (78, 30023), (82, 30044), (96, 30149), (99, 30161), (107, 30215), (109, 30236), (113, 30263), (135, 30440), (139, 30467),

Gene: BaboJay_48 Start: 37263, Stop: 38144, Start Num: 19

Candidate Starts for BaboJay_48:

(Start: 19 @37263 has 123 MA's), (Start: 21 @37275 has 1 MA's), (Start: 27 @37305 has 1 MA's), (32, 37362), (51, 37443), (52, 37467), (53, 37488), (55, 37500), (57, 37509), (62, 37548), (63, 37551), (66, 37578), (69, 37605), (72, 37617), (76, 37671), (83, 37707), (89, 37758), (96, 37806), (110, 37914), (116, 37953), (123, 37995), (128, 38034), (140, 38130), (141, 38136),

Gene: BadStone_50 Start: 37926, Stop: 38807, Start Num: 19

Candidate Starts for BadStone_50:

(Start: 19 @37926 has 123 MA's), (Start: 21 @37938 has 1 MA's), (Start: 27 @37968 has 1 MA's), (32, 38025), (51, 38106), (52, 38130), (53, 38151), (55, 38163), (57, 38172), (62, 38211), (63, 38214), (66, 38241), (69, 38268), (72, 38280), (76, 38334), (83, 38370), (89, 38421), (96, 38469), (110, 38577), (116, 38616), (123, 38658), (128, 38697), (140, 38793), (141, 38799),

Gene: Bakery_42 Start: 33465, Stop: 34382, Start Num: 18

Candidate Starts for Bakery_42:

(Start: 17 @33459 has 15 MA's), (Start: 18 @33465 has 60 MA's), (33, 33582), (34, 33585), (46, 33648), (47, 33654), (49, 33660), (71, 33846), (75, 33900), (76, 33903), (78, 33909), (82, 33930), (95, 34029), (96, 34035), (99, 34047), (109, 34122), (113, 34149), (122, 34221), (127, 34260), (142, 34374),

Gene: Ball_25 Start: 21363, Stop: 22283, Start Num: 18

Candidate Starts for Ball_25:

(Start: 18 @21363 has 60 MA's), (22, 21387), (31, 21477), (37, 21519), (42, 21537), (45, 21549), (52, 21606), (53, 21627), (64, 21696), (65, 21705), (70, 21744), (78, 21813), (79, 21819), (84, 21852), (87, 21876), (90, 21894), (97, 21945), (99, 21951), (101, 21963), (125, 22149), (129, 22170), (138, 22251), (139, 22254),

Gene: Balomoji_51 Start: 38194, Stop: 39075, Start Num: 19

Candidate Starts for Balomoji_51:

(Start: 19 @38194 has 123 MA's), (Start: 21 @38206 has 1 MA's), (Start: 27 @38236 has 1 MA's), (32, 38293), (51, 38374), (52, 38398), (53, 38419), (55, 38431), (57, 38440), (62, 38479), (63, 38482), (66, 38509), (69, 38536), (72, 38548), (76, 38602), (83, 38638), (89, 38689), (96, 38737), (110, 38845), (116, 38884), (123, 38926), (128, 38965), (140, 39061), (141, 39067),

Gene: Barbarian_52 Start: 36717, Stop: 37598, Start Num: 19

Candidate Starts for Barbarian_52:

(Start: 19 @36717 has 123 MA's), (Start: 21 @36729 has 1 MA's), (Start: 27 @36759 has 1 MA's), (32, 36816), (51, 36897), (52, 36921), (53, 36942), (55, 36954), (57, 36963), (62, 37002), (63, 37005), (66, 37032), (69, 37059), (72, 37071), (76, 37125), (83, 37161), (89, 37212), (96, 37260), (110, 37368), (116, 37407), (123, 37449), (128, 37488), (140, 37584), (141, 37590),

Gene: Bask21_53 Start: 37051, Stop: 37932, Start Num: 19

Candidate Starts for Bask21_53:

(Start: 19 @37051 has 123 MA's), (Start: 21 @37063 has 1 MA's), (Start: 27 @37093 has 1 MA's), (32, 37150), (51, 37231), (52, 37255), (53, 37276), (55, 37288), (57, 37297), (62, 37336), (63, 37339), (66, 37366), (69, 37393), (72, 37405), (76, 37459), (83, 37495), (89, 37546), (96, 37594), (110, 37702), (116, 37741), (123, 37783), (128, 37822), (140, 37918), (141, 37924),

Gene: Bauer_32 Start: 24145, Stop: 25065, Start Num: 18

Candidate Starts for Bauer_32:

(Start: 18 @24145 has 60 MA's), (31, 24259), (37, 24301), (42, 24319), (45, 24331), (52, 24388), (64, 24478), (70, 24526), (78, 24595), (79, 24601), (84, 24634), (87, 24658), (125, 24931), (127, 24946), (129, 24952),

Gene: Becksu_53 Start: 38260, Stop: 39141, Start Num: 19

Candidate Starts for Becksu_53:

(Start: 19 @38260 has 123 MA's), (Start: 21 @38272 has 1 MA's), (Start: 27 @38302 has 1 MA's), (32, 38359), (51, 38440), (52, 38464), (53, 38485), (55, 38497), (57, 38506), (62, 38545), (63, 38548), (66,

38575), (69, 38602), (72, 38614), (76, 38668), (83, 38704), (89, 38755), (96, 38803), (110, 38911), (116, 38950), (123, 38992), (128, 39031), (140, 39127), (141, 39133),

Gene: Beenie_30 Start: 27395, Stop: 28312, Start Num: 18

Candidate Starts for Beenie_30:

(Start: 17 @27389 has 15 MA's), (Start: 18 @27395 has 60 MA's), (47, 27584), (49, 27590), (59, 27692), (63, 27716), (71, 27776), (76, 27833), (78, 27839), (79, 27845), (95, 27959), (96, 27965), (99, 27977), (109, 28052), (112, 28076), (113, 28079), (118, 28115), (119, 28121), (123, 28154), (134, 28235),

Gene: Bench_54 Start: 37695, Stop: 38576, Start Num: 19

Candidate Starts for Bench_54:

(Start: 19 @37695 has 123 MA's), (Start: 21 @37707 has 1 MA's), (Start: 27 @37737 has 1 MA's), (32, 37794), (51, 37875), (52, 37899), (53, 37920), (55, 37932), (57, 37941), (62, 37980), (63, 37983), (66, 38010), (69, 38037), (72, 38049), (76, 38103), (83, 38139), (89, 38190), (96, 38238), (110, 38346), (116, 38385), (123, 38427), (128, 38466), (140, 38562), (141, 38568),

Gene: BenchScraper_36 Start: 24587, Stop: 25504, Start Num: 18

Candidate Starts for BenchScraper_36:

(5, 24458), (8, 24464), (Start: 18 @24587 has 60 MA's), (37, 24743), (41, 24758), (45, 24770), (64, 24917), (70, 24965), (73, 25010), (78, 25034), (79, 25040), (84, 25073), (92, 25124), (109, 25250), (113, 25277), (125, 25370), (139, 25475),

Gene: BigBubba_53 Start: 37736, Stop: 38617, Start Num: 19

Candidate Starts for BigBubba_53:

(Start: 19 @37736 has 123 MA's), (Start: 21 @37748 has 1 MA's), (Start: 27 @37778 has 1 MA's), (32, 37835), (51, 37916), (52, 37940), (53, 37961), (55, 37973), (57, 37982), (62, 38021), (63, 38024), (66, 38051), (69, 38078), (72, 38090), (76, 38144), (83, 38180), (89, 38231), (96, 38279), (110, 38387), (116, 38426), (123, 38468), (128, 38507), (140, 38603), (141, 38609),

Gene: BilboSwaggins_51 Start: 38365, Stop: 39246, Start Num: 19

Candidate Starts for BilboSwaggins_51:

(Start: 19 @38365 has 123 MA's), (Start: 21 @38377 has 1 MA's), (Start: 27 @38407 has 1 MA's), (32, 38464), (51, 38545), (52, 38569), (53, 38590), (55, 38602), (57, 38611), (62, 38650), (63, 38653), (66, 38680), (69, 38707), (72, 38719), (76, 38773), (83, 38809), (89, 38860), (96, 38908), (110, 39016), (116, 39055), (123, 39097), (128, 39136), (140, 39232), (141, 39238),

Gene: BillyTP_37 Start: 25308, Stop: 26225, Start Num: 18

Candidate Starts for BillyTP_37:

(5, 25179), (8, 25185), (Start: 18 @25308 has 60 MA's), (37, 25464), (41, 25479), (45, 25491), (64, 25638), (65, 25647), (70, 25686), (73, 25731), (78, 25755), (79, 25761), (84, 25794), (90, 25836), (92, 25845), (97, 25887), (109, 25971), (125, 26091), (127, 26106),

Gene: BlackSpider_31 Start: 24033, Stop: 24953, Start Num: 18

Candidate Starts for BlackSpider_31:

(1, 23742), (2, 23754), (3, 23820), (7, 23910), (Start: 18 @24033 has 60 MA's), (31, 24147), (40, 24198), (42, 24207), (45, 24219), (52, 24276), (64, 24366), (70, 24414), (78, 24483), (79, 24489), (81, 24498), (84, 24522), (87, 24546), (111, 24720), (125, 24819), (126, 24825), (127, 24834), (129, 24840),

Gene: BlingBling_33 Start: 29081, Stop: 30001, Start Num: 18

Candidate Starts for BlingBling_33:

(Start: 17 @29075 has 15 MA's), (Start: 18 @29081 has 60 MA's), (33, 29198), (34, 29201), (46, 29264), (47, 29270), (49, 29276), (71, 29462), (75, 29516), (76, 29519), (78, 29525), (82, 29546), (95, 29645), (96, 29651), (99, 29663), (109, 29738), (113, 29765), (118, 29801), (127, 29876),

Gene: BlueShadow_37 Start: 24572, Stop: 25489, Start Num: 18

Candidate Starts for BlueShadow_37:

(5, 24443), (8, 24449), (Start: 18 @24572 has 60 MA's), (37, 24728), (41, 24743), (45, 24755), (64, 24902), (70, 24950), (73, 24995), (75, 25010), (78, 25019), (79, 25025), (84, 25058), (90, 25100), (92, 25109), (97, 25151), (109, 25235), (125, 25355), (127, 25370), (139, 25460),

Gene: Bowser_37 Start: 29401, Stop: 30318, Start Num: 18

Candidate Starts for Bowser_37:

(Start: 17 @29395 has 15 MA's), (Start: 18 @29401 has 60 MA's), (Start: 23 @29425 has 1 MA's), (34, 29521), (47, 29590), (49, 29596), (59, 29698), (62, 29719), (71, 29782), (75, 29836), (78, 29845), (82, 29866), (83, 29875), (86, 29905), (107, 30037), (109, 30058), (112, 30082), (113, 30085), (118, 30121), (121, 30142),

Gene: Bradissa_35 Start: 30283, Stop: 31200, Start Num: 18

Candidate Starts for Bradissa_35:

(Start: 17 @30277 has 15 MA's), (Start: 18 @30283 has 60 MA's), (Start: 23 @30307 has 1 MA's), (34, 30403), (49, 30478), (54, 30550), (62, 30601), (71, 30664), (75, 30718), (78, 30727), (82, 30748), (83, 30757), (86, 30787), (96, 30853), (107, 30919), (109, 30940), (113, 30967), (118, 31003),

Gene: Bridgette_34 Start: 24627, Stop: 25547, Start Num: 18

Candidate Starts for Bridgette_34:

(5, 24498), (8, 24504), (Start: 18 @24627 has 60 MA's), (37, 24783), (42, 24801), (45, 24813), (64, 24960), (65, 24969), (70, 25008), (78, 25077), (79, 25083), (84, 25116), (90, 25158), (93, 25170), (122, 25389), (125, 25413), (127, 25428), (129, 25434), (138, 25515), (139, 25518),

Gene: Bruin_48 Start: 36604, Stop: 37485, Start Num: 19

Candidate Starts for Bruin_48:

(Start: 19 @36604 has 123 MA's), (Start: 21 @36616 has 1 MA's), (Start: 27 @36646 has 1 MA's), (32, 36703), (51, 36784), (52, 36808), (53, 36829), (55, 36841), (57, 36850), (62, 36889), (63, 36892), (66, 36919), (69, 36946), (72, 36958), (76, 37012), (83, 37048), (89, 37099), (96, 37147), (110, 37255), (116, 37294), (123, 37336), (128, 37375), (140, 37471), (141, 37477),

Gene: Buck_53 Start: 38311, Stop: 39192, Start Num: 19

Candidate Starts for Buck_53:

(Start: 19 @38311 has 123 MA's), (Start: 21 @38323 has 1 MA's), (Start: 27 @38353 has 1 MA's), (32, 38410), (51, 38491), (52, 38515), (53, 38536), (55, 38548), (57, 38557), (62, 38596), (63, 38599), (66, 38626), (69, 38653), (72, 38665), (76, 38719), (83, 38755), (89, 38806), (96, 38854), (110, 38962), (116, 39001), (123, 39043), (128, 39082), (140, 39178), (141, 39184),

Gene: BugsBunny_53 Start: 38142, Stop: 39023, Start Num: 19

Candidate Starts for BugsBunny_53:

(Start: 19 @38142 has 123 MA's), (Start: 21 @38154 has 1 MA's), (Start: 27 @38184 has 1 MA's), (32, 38241), (51, 38322), (52, 38346), (53, 38367), (55, 38379), (57, 38388), (62, 38427), (63, 38430), (66, 38457), (69, 38484), (72, 38496), (76, 38550), (83, 38586), (89, 38637), (96, 38685), (110, 38793), (116, 38832), (123, 38874), (128, 38913), (140, 39009), (141, 39015),

Gene: Bunker_34 Start: 28706, Stop: 29623, Start Num: 18

Candidate Starts for Bunker_34:

(Start: 17 @28700 has 15 MA's), (Start: 18 @28706 has 60 MA's), (47, 28895), (49, 28901), (59, 29003), (71, 29087), (76, 29144), (78, 29150), (79, 29156), (82, 29171), (96, 29276), (99, 29288), (109, 29363), (113, 29390),

Gene: Bunnybear_32 Start: 28492, Stop: 29415, Start Num: 17

Candidate Starts for Bunnybear_32:

(Start: 17 @28492 has 15 MA's), (Start: 18 @28498 has 60 MA's), (Start: 23 @28522 has 1 MA's), (34, 28618), (47, 28687), (49, 28693), (59, 28795), (62, 28816), (71, 28879), (75, 28933), (78, 28942), (82, 28963), (83, 28972), (86, 29002), (96, 29068), (101, 29092), (107, 29134), (109, 29155), (113, 29182), (118, 29218), (119, 29224),

Gene: Cactus_54 Start: 37084, Stop: 37965, Start Num: 19

Candidate Starts for Cactus_54:

(Start: 19 @37084 has 123 MA's), (Start: 21 @37096 has 1 MA's), (Start: 27 @37126 has 1 MA's), (32, 37183), (51, 37264), (52, 37288), (53, 37309), (55, 37321), (57, 37330), (62, 37369), (63, 37372), (66, 37399), (69, 37426), (72, 37438), (76, 37492), (83, 37528), (89, 37579), (96, 37627), (110, 37735), (116, 37774), (123, 37816), (128, 37855), (140, 37951), (141, 37957),

Gene: ChosenOne_53 Start: 37384, Stop: 38265, Start Num: 19

Candidate Starts for ChosenOne_53:

(Start: 19 @37384 has 123 MA's), (Start: 21 @37396 has 1 MA's), (Start: 27 @37426 has 1 MA's), (32, 37483), (51, 37564), (52, 37588), (53, 37609), (55, 37621), (57, 37630), (62, 37669), (63, 37672), (66, 37699), (69, 37726), (72, 37738), (76, 37792), (83, 37828), (89, 37879), (96, 37927), (110, 38035), (116, 38074), (123, 38116), (128, 38155), (140, 38251), (141, 38257),

Gene: ChotaBhai_52 Start: 37406, Stop: 38287, Start Num: 19

Candidate Starts for ChotaBhai_52:

(Start: 19 @37406 has 123 MA's), (Start: 21 @37418 has 1 MA's), (Start: 27 @37448 has 1 MA's), (32, 37505), (48, 37571), (51, 37586), (52, 37610), (53, 37631), (55, 37643), (57, 37652), (62, 37691), (63, 37694), (66, 37721), (69, 37748), (72, 37760), (76, 37814), (83, 37850), (89, 37901), (96, 37949), (110, 38057), (116, 38096), (123, 38138), (128, 38177), (140, 38273), (141, 38279),

Gene: ChuckDuck_35 Start: 24394, Stop: 25314, Start Num: 18

Candidate Starts for ChuckDuck_35:

(Start: 18 @24394 has 60 MA's), (37, 24550), (42, 24568), (45, 24580), (64, 24727), (65, 24736), (70, 24775), (78, 24844), (79, 24850), (84, 24883), (90, 24925), (97, 24976), (100, 24985), (122, 25156), (125, 25180), (127, 25195), (129, 25201), (138, 25282), (139, 25285),

Gene: Cjw1_52 Start: 38785, Stop: 39666, Start Num: 19

Candidate Starts for Cjw1_52:

(Start: 19 @38785 has 123 MA's), (Start: 21 @38797 has 1 MA's), (Start: 27 @38827 has 1 MA's), (32, 38884), (51, 38965), (52, 38989), (53, 39010), (55, 39022), (57, 39031), (62, 39070), (63, 39073), (66, 39100), (69, 39127), (72, 39139), (76, 39193), (83, 39229), (89, 39280), (96, 39328), (110, 39436), (116, 39475), (123, 39517), (128, 39556), (140, 39652), (141, 39658),

Gene: Clark_36 Start: 27206, Stop: 28129, Start Num: 17

Candidate Starts for Clark_36:

(Start: 17 @27206 has 15 MA's), (Start: 18 @27212 has 60 MA's), (47, 27401), (49, 27407), (59, 27509), (63, 27533), (71, 27593), (76, 27650), (78, 27656), (79, 27662), (95, 27776), (96, 27782), (99, 27794), (109, 27869), (112, 27893), (113, 27896), (118, 27932), (119, 27938), (123, 27971), (134, 28052),

Gene: Cole_34 Start: 26120, Stop: 27040, Start Num: 18

Candidate Starts for Cole_34:

(Start: 13 @26078 has 1 MA's), (Start: 18 @26120 has 60 MA's), (37, 26276), (39, 26282), (42, 26294), (45, 26306), (64, 26453), (65, 26462), (70, 26501), (74, 26558), (78, 26570), (79, 26576), (84, 26609), (87, 26633), (90, 26651), (93, 26663), (97, 26702), (119, 26852), (122, 26882), (125, 26906), (129, 26927), (138, 27008), (139, 27011),

Gene: Command613_54 Start: 38123, Stop: 39004, Start Num: 19

Candidate Starts for Command613_54:

(Start: 19 @38123 has 123 MA's), (Start: 21 @38135 has 1 MA's), (Start: 27 @38165 has 1 MA's), (32, 38222), (51, 38303), (52, 38327), (53, 38348), (55, 38360), (57, 38369), (62, 38408), (63, 38411), (66, 38438), (69, 38465), (72, 38477), (76, 38531), (83, 38567), (89, 38618), (96, 38666), (110, 38774), (116, 38813), (123, 38855), (128, 38894), (140, 38990), (141, 38996),

Gene: Confidence_36 Start: 28133, Stop: 29050, Start Num: 18

Candidate Starts for Confidence_36:

(Start: 17 @28127 has 15 MA's), (Start: 18 @28133 has 60 MA's), (Start: 23 @28157 has 1 MA's), (34, 28253), (47, 28322), (49, 28328), (62, 28451), (71, 28514), (75, 28568), (78, 28577), (82, 28598), (83, 28607), (86, 28637), (109, 28790), (113, 28817), (118, 28853),

Gene: Constance_34 Start: 24866, Stop: 25786, Start Num: 18

Candidate Starts for Constance_34:

(Start: 18 @24866 has 60 MA's), (37, 25022), (42, 25040), (45, 25052), (64, 25199), (65, 25208), (70, 25247), (78, 25316), (79, 25322), (84, 25355), (90, 25397), (97, 25448), (122, 25628), (125, 25652), (127, 25667), (129, 25673), (138, 25754), (139, 25757),

Gene: Contagion_49 Start: 36885, Stop: 37766, Start Num: 19

Candidate Starts for Contagion_49:

(Start: 19 @36885 has 123 MA's), (Start: 21 @36897 has 1 MA's), (Start: 27 @36927 has 1 MA's), (32, 36984), (51, 37065), (52, 37089), (53, 37110), (55, 37122), (57, 37131), (62, 37170), (63, 37173), (66, 37200), (69, 37227), (72, 37239), (76, 37293), (83, 37329), (89, 37380), (96, 37428), (110, 37536), (116, 37575), (123, 37617), (128, 37656), (140, 37752), (141, 37758),

Gene: CookieBear_37 Start: 24572, Stop: 25489, Start Num: 18

Candidate Starts for CookieBear_37:

(5, 24443), (8, 24449), (Start: 18 @24572 has 60 MA's), (37, 24728), (41, 24743), (45, 24755), (64, 24902), (65, 24911), (70, 24950), (73, 24995), (78, 25019), (79, 25025), (84, 25058), (90, 25100), (92, 25109), (97, 25151), (109, 25235), (125, 25355), (127, 25370),

Gene: Cookies_49 Start: 37256, Stop: 38137, Start Num: 19

Candidate Starts for Cookies_49:

(Start: 19 @37256 has 123 MA's), (Start: 21 @37268 has 1 MA's), (Start: 27 @37298 has 1 MA's), (32, 37355), (51, 37436), (52, 37460), (53, 37481), (55, 37493), (57, 37502), (62, 37541), (63, 37544), (66, 37571), (69, 37598), (72, 37610), (76, 37664), (83, 37700), (89, 37751), (96, 37799), (110, 37907), (116, 37946), (123, 37988), (128, 38027), (140, 38123), (141, 38129),

Gene: CrystalP_52 Start: 38365, Stop: 39246, Start Num: 19

Candidate Starts for CrystalP_52:

(Start: 19 @38365 has 123 MA's), (Start: 21 @38377 has 1 MA's), (Start: 27 @38407 has 1 MA's), (32, 38464), (51, 38545), (52, 38569), (53, 38590), (55, 38602), (57, 38611), (62, 38650), (63, 38653), (66, 38680), (69, 38707), (72, 38719), (76, 38773), (83, 38809), (89, 38860), (96, 38908), (110, 39016), (116, 39055), (123, 39097), (128, 39136), (140, 39232), (141, 39238),

Gene: Culver_60 Start: 37716, Stop: 38639, Start Num: 18

Candidate Starts for Culver_60:

(Start: 17 @37710 has 15 MA's), (Start: 18 @37716 has 60 MA's), (Start: 23 @37746 has 1 MA's), (32, 37836), (45, 37902), (47, 37911), (49, 37917), (53, 37980), (59, 38019), (68, 38088), (73, 38142), (76, 38160), (77, 38163), (78, 38166), (82, 38187), (93, 38259), (94, 38283), (95, 38286), (96, 38292), (99, 38304), (105, 38352), (106, 38355), (109, 38379), (112, 38403), (118, 38442), (127, 38517), (133, 38556),

Gene: Czyszczone1_53 Start: 37594, Stop: 38475, Start Num: 19

Candidate Starts for Czyszczone1_53:

(Start: 19 @37594 has 123 MA's), (Start: 21 @37606 has 1 MA's), (Start: 27 @37636 has 1 MA's), (32, 37693), (51, 37774), (52, 37798), (53, 37819), (55, 37831), (57, 37840), (62, 37879), (63, 37882), (66, 37909), (69, 37936), (72, 37948), (76, 38002), (83, 38038), (89, 38089), (96, 38137), (110, 38245), (116, 38284), (123, 38326), (128, 38365), (140, 38461), (141, 38467),

Gene: Daikon_53 Start: 38215, Stop: 39096, Start Num: 19

Candidate Starts for Daikon_53:

(Start: 19 @38215 has 123 MA's), (Start: 21 @38227 has 1 MA's), (Start: 27 @38257 has 1 MA's), (32, 38314), (51, 38395), (52, 38419), (53, 38440), (55, 38452), (57, 38461), (62, 38500), (63, 38503), (66, 38530), (69, 38557), (72, 38569), (76, 38623), (83, 38659), (89, 38710), (96, 38758), (110, 38866), (116, 38905), (123, 38947), (128, 38986), (140, 39082), (141, 39088),

Gene: Dmitri_36 Start: 30429, Stop: 31346, Start Num: 18

Candidate Starts for Dmitri_36:

(Start: 17 @30423 has 15 MA's), (Start: 18 @30429 has 60 MA's), (Start: 23 @30453 has 1 MA's), (34, 30549), (47, 30618), (49, 30624), (62, 30747), (71, 30810), (75, 30864), (78, 30873), (82, 30894), (83, 30903), (86, 30933), (109, 31086), (113, 31113), (118, 31149), (119, 31155), (138, 31314),

Gene: DobbysSock_30 Start: 26128, Stop: 27051, Start Num: 17

Candidate Starts for DobbysSock_30:

(Start: 17 @26128 has 15 MA's), (Start: 18 @26134 has 60 MA's), (47, 26323), (49, 26329), (59, 26431), (63, 26455), (71, 26515), (76, 26572), (78, 26578), (79, 26584), (95, 26698), (96, 26704), (99, 26716), (109, 26791), (112, 26815), (113, 26818), (118, 26854), (119, 26860), (123, 26893), (134, 26974),

Gene: DoctorDiddles_52 Start: 37442, Stop: 38323, Start Num: 19

Candidate Starts for DoctorDiddles_52:

(Start: 19 @37442 has 123 MA's), (Start: 21 @37454 has 1 MA's), (Start: 27 @37484 has 1 MA's), (32, 37541), (51, 37622), (52, 37646), (53, 37667), (55, 37679), (57, 37688), (62, 37727), (63, 37730), (66, 37757), (69, 37784), (72, 37796), (76, 37850), (83, 37886), (89, 37937), (96, 37985), (110, 38093), (116, 38132), (123, 38174), (128, 38213), (140, 38309), (141, 38315),

Gene: Dolores_37 Start: 28084, Stop: 29001, Start Num: 18

Candidate Starts for Dolores_37:

(Start: 17 @28078 has 15 MA's), (Start: 18 @28084 has 60 MA's), (47, 28273), (49, 28279), (59, 28381), (63, 28405), (71, 28465), (76, 28522), (78, 28528), (79, 28534), (95, 28648), (96, 28654), (99, 28666), (109, 28741), (112, 28765), (113, 28768), (118, 28804), (119, 28810), (120, 28822), (134, 28924),

Gene: Donatella_35 Start: 26584, Stop: 27504, Start Num: 18

Candidate Starts for Donatella_35:

(Start: 13 @26542 has 1 MA's), (Start: 18 @26584 has 60 MA's), (37, 26740), (42, 26758), (45, 26770), (64, 26917), (65, 26926), (70, 26965), (71, 26971), (75, 27025), (78, 27034), (79, 27040), (84, 27073), (87, 27097), (90, 27115), (93, 27127), (97, 27166), (119, 27316), (121, 27331), (122, 27346), (125,

27370), (127, 27385), (129, 27391), (138, 27472), (139, 27475),

Gene: Dorito_32 Start: 25772, Stop: 26695, Start Num: 17

Candidate Starts for Dorito_32:

(Start: 17 @25772 has 15 MA's), (Start: 18 @25778 has 60 MA's), (47, 25967), (49, 25973), (59, 26075), (63, 26099), (71, 26159), (76, 26216), (78, 26222), (79, 26228), (95, 26342), (96, 26348), (99, 26360), (109, 26435), (112, 26459), (113, 26462), (118, 26498), (119, 26504), (123, 26537), (134, 26618),

Gene: DrDrey_52 Start: 38513, Stop: 39394, Start Num: 19

Candidate Starts for DrDrey_52:

(Start: 19 @38513 has 123 MA's), (Start: 21 @38525 has 1 MA's), (Start: 27 @38555 has 1 MA's), (32, 38612), (51, 38693), (52, 38717), (53, 38738), (55, 38750), (57, 38759), (62, 38798), (63, 38801), (66, 38828), (69, 38855), (72, 38867), (76, 38921), (83, 38957), (89, 39008), (96, 39056), (110, 39164), (116, 39203), (123, 39245), (128, 39284), (140, 39380), (141, 39386),

Gene: Dumbo_52 Start: 37289, Stop: 38170, Start Num: 19

Candidate Starts for Dumbo_52:

(Start: 19 @37289 has 123 MA's), (Start: 21 @37301 has 1 MA's), (Start: 27 @37331 has 1 MA's), (32, 37388), (51, 37469), (52, 37493), (53, 37514), (55, 37526), (57, 37535), (62, 37574), (63, 37577), (66, 37604), (69, 37631), (72, 37643), (76, 37697), (83, 37733), (89, 37784), (96, 37832), (110, 37940), (116, 37979), (123, 38021), (128, 38060), (140, 38156), (141, 38162),

Gene: Dusk_50 Start: 37586, Stop: 38467, Start Num: 19

Candidate Starts for Dusk_50:

(Start: 19 @37586 has 123 MA's), (Start: 21 @37598 has 1 MA's), (Start: 27 @37628 has 1 MA's), (32, 37685), (51, 37766), (52, 37790), (53, 37811), (55, 37823), (57, 37832), (62, 37871), (63, 37874), (66, 37901), (69, 37928), (72, 37940), (76, 37994), (83, 38030), (89, 38081), (96, 38129), (110, 38237), (116, 38276), (123, 38318), (128, 38357), (140, 38453), (141, 38459),

Gene: EMSquaredA_36 Start: 28837, Stop: 29754, Start Num: 18

Candidate Starts for EMSquaredA_36:

(Start: 17 @28831 has 15 MA's), (Start: 18 @28837 has 60 MA's), (Start: 23 @28861 has 1 MA's), (34, 28957), (47, 29026), (49, 29032), (62, 29155), (71, 29218), (75, 29272), (78, 29281), (82, 29302), (83, 29311), (86, 29341), (91, 29365), (107, 29473), (109, 29494), (113, 29521),

Gene: Easy2Say_53 Start: 38827, Stop: 39708, Start Num: 19

Candidate Starts for Easy2Say_53:

(Start: 19 @38827 has 123 MA's), (Start: 21 @38839 has 1 MA's), (Start: 27 @38869 has 1 MA's), (32, 38926), (51, 39007), (52, 39031), (53, 39052), (55, 39064), (57, 39073), (62, 39112), (63, 39115), (66, 39142), (69, 39169), (72, 39181), (76, 39235), (83, 39271), (89, 39322), (96, 39370), (110, 39478), (116, 39517), (123, 39559), (128, 39598), (140, 39694), (141, 39700),

Gene: Elite2014_52 Start: 37383, Stop: 38264, Start Num: 19

Candidate Starts for Elite2014_52:

(Start: 19 @37383 has 123 MA's), (Start: 21 @37395 has 1 MA's), (Start: 27 @37425 has 1 MA's), (32, 37482), (51, 37563), (52, 37587), (53, 37608), (55, 37620), (57, 37629), (62, 37668), (63, 37671), (66, 37698), (69, 37725), (72, 37737), (76, 37791), (83, 37827), (89, 37878), (96, 37926), (110, 38034), (116, 38073), (123, 38115), (128, 38154), (140, 38250), (141, 38256),

Gene: Elph10_52 Start: 37092, Stop: 37973, Start Num: 19

Candidate Starts for Elph10_52:

(Start: 19 @37092 has 123 MA's), (Start: 21 @37104 has 1 MA's), (Start: 27 @37134 has 1 MA's), (32, 37191), (51, 37272), (52, 37296), (53, 37317), (55, 37329), (57, 37338), (62, 37377), (63, 37380), (66, 37407), (69, 37434), (72, 37446), (76, 37500), (83, 37536), (89, 37587), (96, 37635), (110, 37743), (116, 37782), (123, 37824), (128, 37863), (140, 37959), (141, 37965),

Gene: Emmina_52 Start: 37290, Stop: 38171, Start Num: 19

Candidate Starts for Emmina_52:

(Start: 19 @37290 has 123 MA's), (Start: 21 @37302 has 1 MA's), (Start: 27 @37332 has 1 MA's), (32, 37389), (51, 37470), (52, 37494), (53, 37515), (55, 37527), (57, 37536), (62, 37575), (63, 37578), (66, 37605), (69, 37632), (72, 37644), (76, 37698), (83, 37734), (89, 37785), (96, 37833), (110, 37941), (116, 37980), (123, 38022), (128, 38061), (140, 38157), (141, 38163),

Gene: EnalisNailo_34 Start: 29811, Stop: 30734, Start Num: 17

Candidate Starts for EnalisNailo_34:

(Start: 17 @29811 has 15 MA's), (Start: 18 @29817 has 60 MA's), (Start: 23 @29841 has 1 MA's), (34, 29937), (49, 30012), (54, 30084), (62, 30135), (71, 30198), (75, 30252), (78, 30261), (82, 30282), (83, 30291), (86, 30321), (96, 30387), (107, 30453), (109, 30474), (113, 30501), (118, 30537),

Gene: Eureka_50 Start: 37854, Stop: 38735, Start Num: 19

Candidate Starts for Eureka_50:

(Start: 19 @37854 has 123 MA's), (Start: 21 @37866 has 1 MA's), (Start: 27 @37896 has 1 MA's), (32, 37953), (51, 38034), (52, 38058), (53, 38079), (55, 38091), (57, 38100), (62, 38139), (63, 38142), (66, 38169), (69, 38196), (72, 38208), (76, 38262), (83, 38298), (89, 38349), (96, 38397), (110, 38505), (116, 38544), (123, 38586), (128, 38625), (140, 38721), (141, 38727),

Gene: FairyPath_52 Start: 38206, Stop: 39087, Start Num: 19

Candidate Starts for FairyPath_52:

(Start: 19 @38206 has 123 MA's), (Start: 21 @38218 has 1 MA's), (Start: 27 @38248 has 1 MA's), (32, 38305), (51, 38386), (52, 38410), (53, 38431), (55, 38443), (57, 38452), (62, 38491), (63, 38494), (66, 38521), (69, 38548), (72, 38560), (76, 38614), (83, 38650), (89, 38701), (96, 38749), (110, 38857), (116, 38896), (123, 38938), (128, 38977), (140, 39073), (141, 39079),

Gene: Filch_53 Start: 37315, Stop: 38196, Start Num: 19

Candidate Starts for Filch_53:

(Start: 19 @37315 has 123 MA's), (Start: 21 @37327 has 1 MA's), (Start: 27 @37357 has 1 MA's), (32, 37414), (51, 37495), (52, 37519), (53, 37540), (55, 37552), (57, 37561), (62, 37600), (63, 37603), (66, 37630), (69, 37657), (72, 37669), (76, 37723), (83, 37759), (89, 37810), (96, 37858), (110, 37966), (116, 38005), (123, 38047), (128, 38086), (140, 38182), (141, 38188),

Gene: FireRed_55 Start: 38581, Stop: 39462, Start Num: 19

Candidate Starts for FireRed_55:

(Start: 19 @38581 has 123 MA's), (Start: 21 @38593 has 1 MA's), (Start: 27 @38623 has 1 MA's), (32, 38680), (51, 38761), (52, 38785), (53, 38806), (55, 38818), (57, 38827), (62, 38866), (63, 38869), (66, 38896), (69, 38923), (72, 38935), (76, 38989), (83, 39025), (89, 39076), (96, 39124), (110, 39232), (116, 39271), (123, 39313), (128, 39352), (140, 39448), (141, 39454),

Gene: Floral_35 Start: 30904, Stop: 31827, Start Num: 17

Candidate Starts for Floral_35:

(Start: 17 @30904 has 15 MA's), (Start: 18 @30910 has 60 MA's), (Start: 23 @30934 has 1 MA's), (34, 31030), (47, 31099), (49, 31105), (62, 31228), (71, 31291), (75, 31345), (78, 31354), (82, 31375), (83, 31384), (86, 31414), (91, 31438), (107, 31546), (109, 31567), (113, 31594),

Gene: Flypotenuse_47 Start: 37078, Stop: 37959, Start Num: 19

Candidate Starts for Flypotenuse_47:

(Start: 19 @37078 has 123 MA's), (Start: 21 @37090 has 1 MA's), (Start: 27 @37120 has 1 MA's), (32, 37177), (51, 37258), (52, 37282), (53, 37303), (55, 37315), (57, 37324), (62, 37363), (63, 37366), (66, 37393), (69, 37420), (72, 37432), (76, 37486), (83, 37522), (89, 37573), (96, 37621), (110, 37729), (116, 37768), (123, 37810), (128, 37849), (140, 37945), (141, 37951),

Gene: FoghornLeghorn_47 Start: 36088, Stop: 36969, Start Num: 19

Candidate Starts for FoghornLeghorn_47:

(Start: 19 @36088 has 123 MA's), (Start: 21 @36100 has 1 MA's), (Start: 27 @36130 has 1 MA's), (32, 36187), (51, 36268), (52, 36292), (53, 36313), (55, 36325), (57, 36334), (62, 36373), (63, 36376), (66, 36403), (69, 36430), (72, 36442), (76, 36496), (83, 36532), (89, 36583), (96, 36631), (110, 36739), (116, 36778), (123, 36820), (128, 36859), (140, 36955), (141, 36961),

Gene: FosterFrank_36 Start: 24468, Stop: 25388, Start Num: 18

Candidate Starts for FosterFrank_36:

(Start: 18 @24468 has 60 MA's), (37, 24624), (42, 24642), (45, 24654), (64, 24801), (65, 24810), (70, 24849), (78, 24918), (79, 24924), (84, 24957), (90, 24999), (97, 25050), (124, 25242), (127, 25269), (129, 25275), (138, 25356), (139, 25359),

Gene: Gage_55 Start: 37863, Stop: 38744, Start Num: 19

Candidate Starts for Gage_55:

(Start: 19 @37863 has 123 MA's), (Start: 21 @37875 has 1 MA's), (Start: 27 @37905 has 1 MA's), (32, 37962), (51, 38043), (52, 38067), (53, 38088), (55, 38100), (57, 38109), (62, 38148), (63, 38151), (66, 38178), (69, 38205), (72, 38217), (76, 38271), (83, 38307), (89, 38358), (96, 38406), (110, 38514), (116, 38553), (123, 38595), (128, 38634), (140, 38730), (141, 38736),

Gene: Gator_50 Start: 38217, Stop: 39098, Start Num: 19

Candidate Starts for Gator_50:

(Start: 19 @38217 has 123 MA's), (Start: 21 @38229 has 1 MA's), (Start: 27 @38259 has 1 MA's), (32, 38316), (51, 38397), (52, 38421), (53, 38442), (55, 38454), (57, 38463), (62, 38502), (63, 38505), (66, 38532), (69, 38559), (72, 38571), (76, 38625), (83, 38661), (89, 38712), (96, 38760), (110, 38868), (116, 38907), (123, 38949), (128, 38988), (140, 39084), (141, 39090),

Gene: Gemini_56 Start: 38380, Stop: 39261, Start Num: 19

Candidate Starts for Gemini_56:

(Start: 19 @38380 has 123 MA's), (Start: 21 @38392 has 1 MA's), (Start: 27 @38422 has 1 MA's), (32, 38479), (51, 38560), (52, 38584), (53, 38605), (55, 38617), (57, 38626), (62, 38665), (63, 38668), (66, 38695), (69, 38722), (72, 38734), (76, 38788), (83, 38824), (89, 38875), (96, 38923), (110, 39031), (116, 39070), (123, 39112), (128, 39151), (140, 39247), (141, 39253),

Gene: Glexan_50 Start: 38205, Stop: 39086, Start Num: 19

Candidate Starts for Glexan_50:

(Start: 19 @38205 has 123 MA's), (Start: 21 @38217 has 1 MA's), (Start: 27 @38247 has 1 MA's), (32, 38304), (51, 38385), (52, 38409), (53, 38430), (55, 38442), (57, 38451), (62, 38490), (63, 38493), (66, 38520), (69, 38547), (72, 38559), (76, 38613), (83, 38649), (89, 38700), (96, 38748), (110, 38856), (116, 38895), (123, 38937), (128, 38976), (140, 39072), (141, 39078),

Gene: Globfish_36 Start: 24809, Stop: 25729, Start Num: 18

Candidate Starts for Globfish_36:

(Start: 13 @24767 has 1 MA's), (15, 24791), (Start: 18 @24809 has 60 MA's), (42, 24983), (45, 24995), (64, 25142), (65, 25151), (70, 25190), (73, 25235), (78, 25259), (79, 25265), (84, 25298), (90, 25340), (92, 25349), (93, 25352), (99, 25397), (109, 25475), (125, 25595), (127, 25610), (139, 25700),

Gene: GlobiWarming_35 Start: 24310, Stop: 25230, Start Num: 18

Candidate Starts for GlobiWarming_35:

(5, 24181), (8, 24187), (Start: 18 @24310 has 60 MA's), (37, 24466), (42, 24484), (45, 24496), (64, 24643), (65, 24652), (70, 24691), (78, 24760), (79, 24766), (84, 24799), (90, 24841), (122, 25072), (125, 25096), (127, 25111), (129, 25117), (138, 25198), (139, 25201),

Gene: Goku_50 Start: 37583, Stop: 38464, Start Num: 19

Candidate Starts for Goku_50:

(Start: 19 @37583 has 123 MA's), (Start: 21 @37595 has 1 MA's), (Start: 27 @37625 has 1 MA's), (32, 37682), (51, 37763), (52, 37787), (53, 37808), (55, 37820), (57, 37829), (62, 37868), (63, 37871), (66, 37898), (69, 37925), (72, 37937), (76, 37991), (83, 38027), (89, 38078), (96, 38126), (110, 38234), (116, 38273), (123, 38315), (128, 38354), (140, 38450), (141, 38456),

Gene: GoldenSpark_55 Start: 37863, Stop: 38744, Start Num: 19

Candidate Starts for GoldenSpark_55:

(Start: 19 @37863 has 123 MA's), (Start: 21 @37875 has 1 MA's), (Start: 27 @37905 has 1 MA's), (32, 37962), (51, 38043), (52, 38067), (53, 38088), (55, 38100), (57, 38109), (62, 38148), (63, 38151), (66, 38178), (69, 38205), (72, 38217), (76, 38271), (83, 38307), (89, 38358), (96, 38406), (110, 38514), (116, 38553), (123, 38595), (128, 38634), (140, 38730), (141, 38736),

Gene: Goldilocks_54 Start: 37365, Stop: 38246, Start Num: 19

Candidate Starts for Goldilocks_54:

(Start: 19 @37365 has 123 MA's), (Start: 21 @37377 has 1 MA's), (Start: 27 @37407 has 1 MA's), (32, 37464), (51, 37545), (52, 37569), (53, 37590), (55, 37602), (57, 37611), (62, 37650), (63, 37653), (66, 37680), (69, 37707), (72, 37719), (76, 37773), (83, 37809), (89, 37860), (96, 37908), (110, 38016), (116, 38055), (123, 38097), (128, 38136), (140, 38232), (141, 38238),

Gene: GooberAzure_55 Start: 37863, Stop: 38744, Start Num: 19

Candidate Starts for GooberAzure_55:

(Start: 19 @37863 has 123 MA's), (Start: 21 @37875 has 1 MA's), (Start: 27 @37905 has 1 MA's), (32, 37962), (51, 38043), (52, 38067), (53, 38088), (55, 38100), (57, 38109), (62, 38148), (63, 38151), (66, 38178), (69, 38205), (72, 38217), (76, 38271), (83, 38307), (89, 38358), (96, 38406), (110, 38514), (116, 38553), (123, 38595), (128, 38634), (140, 38730), (141, 38736),

Gene: GoodLuckBabe_36 Start: 26660, Stop: 27622, Start Num: 13

Candidate Starts for GoodLuckBabe_36:

(Start: 13 @26660 has 1 MA's), (Start: 18 @26702 has 60 MA's), (37, 26858), (42, 26876), (45, 26888), (52, 26945), (64, 27035), (65, 27044), (70, 27083), (75, 27143), (78, 27152), (79, 27158), (84, 27191), (90, 27233), (93, 27245), (97, 27284), (122, 27464), (125, 27488), (127, 27503), (129, 27509), (138, 27590), (139, 27593),

Gene: Gorpy_37 Start: 25804, Stop: 26721, Start Num: 18

Candidate Starts for Gorpy_37:

(5, 25675), (8, 25681), (Start: 18 @25804 has 60 MA's), (37, 25960), (41, 25975), (45, 25987), (64, 26134), (65, 26143), (70, 26182), (73, 26227), (78, 26251), (79, 26257), (84, 26290), (90, 26332), (92, 26341), (97, 26383), (109, 26467), (125, 26587), (127, 26602),

Gene: Guinevere_36 Start: 26292, Stop: 27212, Start Num: 18

Candidate Starts for Guinevere_36:

(Start: 13 @26250 has 1 MA's), (Start: 18 @26292 has 60 MA's), (37, 26448), (42, 26466), (45, 26478), (64, 26625), (70, 26673), (75, 26733), (78, 26742), (79, 26748), (84, 26781), (90, 26823), (93, 26835), (97, 26874), (122, 27054), (125, 27078), (127, 27093), (129, 27099), (138, 27180), (139, 27183),

Gene: Gusanita_34 Start: 26041, Stop: 26961, Start Num: 18

Candidate Starts for Gusanita_34:

(5, 25912), (8, 25918), (Start: 18 @26041 has 60 MA's), (40, 26206), (42, 26215), (45, 26227), (47, 26236), (52, 26284), (64, 26374), (65, 26383), (70, 26422), (73, 26467), (78, 26491), (79, 26497), (84, 26530), (93, 26584), (97, 26623), (101, 26641), (109, 26707), (113, 26734), (137, 26923),

Gene: Halloweekend_34 Start: 25999, Stop: 26919, Start Num: 18

Candidate Starts for Halloweekend_34:

(Start: 13 @25957 has 1 MA's), (Start: 18 @25999 has 60 MA's), (37, 26155), (42, 26173), (45, 26185), (64, 26332), (65, 26341), (70, 26380), (78, 26449), (79, 26455), (84, 26488), (87, 26512), (90, 26530), (93, 26542), (122, 26761), (125, 26785), (127, 26800), (129, 26806), (138, 26887), (139, 26890),

Gene: HanKaySha_51 Start: 37173, Stop: 38054, Start Num: 19

Candidate Starts for HanKaySha_51:

(Start: 19 @37173 has 123 MA's), (Start: 21 @37185 has 1 MA's), (Start: 27 @37215 has 1 MA's), (32, 37272), (51, 37353), (52, 37377), (53, 37398), (55, 37410), (57, 37419), (62, 37458), (63, 37461), (66, 37488), (69, 37515), (72, 37527), (76, 37581), (83, 37617), (89, 37668), (96, 37716), (110, 37824), (116, 37863), (123, 37905), (128, 37944), (140, 38040), (141, 38046),

Gene: Harella_52 Start: 38721, Stop: 39602, Start Num: 19

Candidate Starts for Harella_52:

(Start: 19 @38721 has 123 MA's), (Start: 21 @38733 has 1 MA's), (Start: 27 @38763 has 1 MA's), (32, 38820), (51, 38901), (52, 38925), (53, 38946), (55, 38958), (57, 38967), (62, 39006), (63, 39009), (66, 39036), (69, 39063), (72, 39075), (76, 39129), (83, 39165), (89, 39216), (96, 39264), (110, 39372), (116, 39411), (123, 39453), (128, 39492), (140, 39588), (141, 39594),

Gene: Henry_51 Start: 37805, Stop: 38686, Start Num: 19

Candidate Starts for Henry_51:

(Start: 19 @37805 has 123 MA's), (Start: 21 @37817 has 1 MA's), (Start: 27 @37847 has 1 MA's), (32, 37904), (51, 37985), (52, 38009), (53, 38030), (55, 38042), (57, 38051), (62, 38090), (63, 38093), (66, 38120), (69, 38147), (72, 38159), (76, 38213), (83, 38249), (89, 38300), (96, 38348), (110, 38456), (116, 38495), (123, 38537), (128, 38576), (140, 38672), (141, 38678),

Gene: Hestia_36 Start: 24611, Stop: 25531, Start Num: 18

Candidate Starts for Hestia_36:

(5, 24482), (8, 24488), (Start: 18 @24611 has 60 MA's), (42, 24785), (45, 24797), (64, 24944), (70, 24992), (78, 25061), (79, 25067), (97, 25193), (109, 25277), (122, 25373), (125, 25397), (127, 25412), (129, 25418), (138, 25499),

Gene: Highbury_53 Start: 37462, Stop: 38343, Start Num: 19

Candidate Starts for Highbury_53:

(Start: 19 @37462 has 123 MA's), (Start: 21 @37474 has 1 MA's), (Start: 27 @37504 has 1 MA's), (32, 37561), (51, 37642), (52, 37666), (53, 37687), (55, 37699), (57, 37708), (62, 37747), (63, 37750), (66, 37777), (69, 37804), (72, 37816), (76, 37870), (83, 37906), (89, 37957), (96, 38005), (110, 38113), (116, 38152), (123, 38194), (128, 38233), (140, 38329), (141, 38335),

Gene: Hillester_36 Start: 24572, Stop: 25492, Start Num: 18

Candidate Starts for Hillester_36:

(5, 24443), (10, 24470), (Start: 18 @24572 has 60 MA's), (31, 24686), (42, 24746), (45, 24758), (52, 24815), (64, 24905), (70, 24953), (78, 25022), (79, 25028), (84, 25061), (87, 25085), (125, 25358), (127, 25373), (129, 25379),

Gene: Holt_57 Start: 38277, Stop: 39158, Start Num: 19

Candidate Starts for Holt_57:

(Start: 19 @38277 has 123 MA's), (Start: 21 @38289 has 1 MA's), (Start: 27 @38319 has 1 MA's), (32, 38376), (51, 38457), (52, 38481), (53, 38502), (55, 38514), (57, 38523), (62, 38562), (63, 38565), (66, 38592), (69, 38619), (72, 38631), (76, 38685), (83, 38721), (89, 38772), (96, 38820), (110, 38928), (116, 38967), (123, 39009), (128, 39048), (140, 39144), (141, 39150),

Gene: Hoonter_55 Start: 37863, Stop: 38744, Start Num: 19

Candidate Starts for Hoonter_55:

(Start: 19 @37863 has 123 MA's), (Start: 21 @37875 has 1 MA's), (Start: 27 @37905 has 1 MA's), (32, 37962), (51, 38043), (52, 38067), (53, 38088), (55, 38100), (57, 38109), (62, 38148), (63, 38151), (66, 38178), (69, 38205), (72, 38217), (76, 38271), (83, 38307), (89, 38358), (96, 38406), (110, 38514), (116, 38553), (123, 38595), (128, 38634), (140, 38730), (141, 38736),

Gene: Hokey_52 Start: 37707, Stop: 38588, Start Num: 19

Candidate Starts for Hokey_52:

(Start: 19 @37707 has 123 MA's), (Start: 21 @37719 has 1 MA's), (Start: 27 @37749 has 1 MA's), (32, 37806), (51, 37887), (52, 37911), (53, 37932), (55, 37944), (57, 37953), (62, 37992), (63, 37995), (66, 38022), (69, 38049), (72, 38061), (76, 38115), (83, 38151), (89, 38202), (96, 38250), (110, 38358), (116, 38397), (123, 38439), (128, 38478), (140, 38574), (141, 38580),

Gene: Hortense_36 Start: 30765, Stop: 31682, Start Num: 18

Candidate Starts for Hortense_36:

(Start: 17 @30759 has 15 MA's), (Start: 18 @30765 has 60 MA's), (45, 30945), (47, 30954), (49, 30960), (68, 31131), (71, 31146), (76, 31203), (78, 31209), (79, 31215), (82, 31230), (95, 31329), (96, 31335), (99, 31347), (109, 31422), (112, 31446), (113, 31449), (118, 31485), (119, 31491), (120, 31503), (134, 31605),

Gene: HotPotato_34 Start: 24923, Stop: 25843, Start Num: 18

Candidate Starts for HotPotato_34:

(Start: 18 @24923 has 60 MA's), (37, 25079), (42, 25097), (45, 25109), (64, 25256), (65, 25265), (70, 25304), (78, 25373), (79, 25379), (84, 25412), (90, 25454), (93, 25466), (122, 25685), (125, 25709), (127, 25724), (129, 25730), (138, 25811), (139, 25814),

Gene: Howe_36 Start: 30765, Stop: 31682, Start Num: 18

Candidate Starts for Howe_36:

(Start: 17 @30759 has 15 MA's), (Start: 18 @30765 has 60 MA's), (45, 30945), (47, 30954), (49, 30960), (68, 31131), (71, 31146), (76, 31203), (78, 31209), (79, 31215), (82, 31230), (95, 31329), (96, 31335), (99, 31347), (109, 31422), (112, 31446), (113, 31449), (118, 31485), (119, 31491), (120, 31503), (134, 31605),

Gene: HufflyPuff_54 Start: 38537, Stop: 39418, Start Num: 19

Candidate Starts for HufflyPuff_54:

(Start: 19 @38537 has 123 MA's), (Start: 21 @38549 has 1 MA's), (Start: 27 @38579 has 1 MA's), (32, 38636), (51, 38717), (52, 38741), (53, 38762), (55, 38774), (57, 38783), (62, 38822), (63, 38825), (66, 38852), (69, 38879), (72, 38891), (76, 38945), (83, 38981), (89, 39032), (96, 39080), (110, 39188), (116, 39227), (123, 39269), (128, 39308), (140, 39404), (141, 39410),

Gene: IHOP_50 Start: 37929, Stop: 38810, Start Num: 19

Candidate Starts for IHOP_50:

(Start: 19 @37929 has 123 MA's), (Start: 21 @37941 has 1 MA's), (Start: 27 @37971 has 1 MA's), (32, 38028), (51, 38109), (52, 38133), (53, 38154), (55, 38166), (57, 38175), (62, 38214), (63, 38217), (66, 38244), (69, 38271), (72, 38283), (76, 38337), (83, 38373), (89, 38424), (96, 38472), (110, 38580), (116, 38619), (123, 38661), (128, 38700), (140, 38796), (141, 38802),

Gene: Icee_52 Start: 37531, Stop: 38412, Start Num: 19

Candidate Starts for Icee_52:

(Start: 19 @37531 has 123 MA's), (Start: 21 @37543 has 1 MA's), (Start: 27 @37573 has 1 MA's), (32, 37630), (51, 37711), (52, 37735), (53, 37756), (55, 37768), (57, 37777), (62, 37816), (63, 37819), (66, 37846), (69, 37873), (72, 37885), (76, 37939), (83, 37975), (89, 38026), (96, 38074), (110, 38182), (116, 38221), (123, 38263), (128, 38302), (140, 38398), (141, 38404),

Gene: Ichiang_34 Start: 26018, Stop: 26938, Start Num: 18

Candidate Starts for Ichiang_34:

(Start: 13 @25976 has 1 MA's), (Start: 18 @26018 has 60 MA's), (37, 26174), (42, 26192), (45, 26204), (50, 26228), (64, 26351), (65, 26360), (70, 26399), (78, 26468), (79, 26474), (84, 26507), (87, 26531), (90, 26549), (93, 26561), (96, 26594), (97, 26600), (99, 26606), (122, 26780), (125, 26804), (127, 26819), (129, 26825), (138, 26906), (139, 26909),

Gene: Inca_49 Start: 36454, Stop: 37335, Start Num: 19

Candidate Starts for Inca_49:

(Start: 19 @36454 has 123 MA's), (Start: 21 @36466 has 1 MA's), (Start: 27 @36496 has 1 MA's), (32, 36553), (51, 36634), (52, 36658), (53, 36679), (55, 36691), (57, 36700), (62, 36739), (63, 36742), (66, 36769), (69, 36796), (72, 36808), (76, 36862), (83, 36898), (89, 36949), (96, 36997), (110, 37105), (116, 37144), (123, 37186), (128, 37225), (140, 37321), (141, 37327),

Gene: Invectra_37 Start: 28866, Stop: 29783, Start Num: 18

Candidate Starts for Invectra_37:

(Start: 17 @28860 has 15 MA's), (Start: 18 @28866 has 60 MA's), (47, 29055), (49, 29061), (59, 29163), (63, 29187), (71, 29247), (76, 29304), (78, 29310), (79, 29316), (95, 29430), (96, 29436), (99, 29448), (109, 29523), (112, 29547), (113, 29550), (118, 29586), (119, 29592), (123, 29625), (134, 29706),

Gene: IsHungry_32 Start: 25028, Stop: 25948, Start Num: 18

Candidate Starts for IsHungry_32:

(4, 24872), (5, 24896), (10, 24923), (11, 24962), (Start: 18 @25028 has 60 MA's), (22, 25052), (31, 25142), (37, 25184), (42, 25202), (45, 25214), (52, 25271), (64, 25361), (67, 25394), (70, 25409), (73, 25454), (78, 25478), (79, 25484), (84, 25517), (109, 25694), (113, 25721), (122, 25790), (125, 25814), (139, 25919),

Gene: Isolde_36 Start: 24341, Stop: 25258, Start Num: 18

Candidate Starts for Isolde_36:

(5, 24212), (8, 24218), (Start: 18 @24341 has 60 MA's), (41, 24512), (45, 24524), (64, 24671), (70, 24719), (73, 24764), (78, 24788), (79, 24794), (84, 24827), (90, 24869), (92, 24878), (99, 24926), (109, 25004), (113, 25031), (127, 25139), (139, 25229),

Gene: Jablanski_34 Start: 28854, Stop: 29789, Start Num: 17

Candidate Starts for Jablanski_34:

(12, 28800), (Start: 17 @28854 has 15 MA's), (34, 28986), (52, 29103), (59, 29163), (60, 29166), (63, 29187), (74, 29298), (78, 29310), (90, 29391), (98, 29445), (100, 29451), (103, 29469), (109, 29529), (112, 29553), (113, 29556), (118, 29592), (119, 29598), (131, 29676), (136, 29736),

Gene: JeTaime_53 Start: 38357, Stop: 39238, Start Num: 19

Candidate Starts for JeTaime_53:

(Start: 19 @38357 has 123 MA's), (Start: 21 @38369 has 1 MA's), (Start: 27 @38399 has 1 MA's), (32, 38456), (51, 38537), (52, 38561), (53, 38582), (55, 38594), (57, 38603), (62, 38642), (63, 38645), (66, 38672), (69, 38699), (72, 38711), (76, 38765), (83, 38801), (89, 38852), (96, 38900), (110, 39008),

(116, 39047), (123, 39089), (128, 39128), (140, 39224), (141, 39230),

Gene: JellyBread_32 Start: 23160, Stop: 24080, Start Num: 18

Candidate Starts for JellyBread_32:

(Start: 18 @23160 has 60 MA's), (26, 23217), (37, 23316), (42, 23334), (45, 23346), (64, 23493), (70, 23541), (73, 23586), (75, 23601), (78, 23610), (79, 23616), (82, 23631), (84, 23649), (90, 23691), (92, 23700), (97, 23742), (109, 23826), (113, 23853), (125, 23946), (127, 23961), (139, 24051),

Gene: Judy_35 Start: 24877, Stop: 25797, Start Num: 18

Candidate Starts for Judy_35:

(Start: 18 @24877 has 60 MA's), (37, 25033), (42, 25051), (45, 25063), (64, 25210), (65, 25219), (70, 25258), (78, 25327), (79, 25333), (84, 25366), (90, 25408), (97, 25459), (122, 25639), (125, 25663), (127, 25678), (129, 25684), (138, 25765), (139, 25768),

Gene: Julie_35 Start: 26941, Stop: 27861, Start Num: 18

Candidate Starts for Julie_35:

(5, 26809), (8, 26815), (10, 26836), (11, 26875), (Start: 18 @26941 has 60 MA's), (22, 26965), (31, 27055), (37, 27097), (42, 27115), (45, 27127), (64, 27274), (70, 27322), (73, 27367), (78, 27391), (79, 27397), (84, 27430), (90, 27472), (109, 27607), (113, 27634), (122, 27703), (125, 27727), (139, 27832),

Gene: Kanye_48 Start: 37217, Stop: 38098, Start Num: 19

Candidate Starts for Kanye_48:

(Start: 19 @37217 has 123 MA's), (Start: 21 @37229 has 1 MA's), (Start: 27 @37259 has 1 MA's), (32, 37316), (51, 37397), (52, 37421), (53, 37442), (55, 37454), (57, 37463), (62, 37502), (63, 37505), (66, 37532), (69, 37559), (72, 37571), (76, 37625), (83, 37661), (89, 37712), (96, 37760), (110, 37868), (116, 37907), (123, 37949), (128, 37988), (140, 38084), (141, 38090),

Gene: Karkharias_34 Start: 24280, Stop: 25200, Start Num: 18

Candidate Starts for Karkharias_34:

(Start: 13 @24238 has 1 MA's), (Start: 18 @24280 has 60 MA's), (37, 24436), (42, 24454), (45, 24466), (64, 24613), (65, 24622), (70, 24661), (78, 24730), (79, 24736), (84, 24769), (90, 24811), (93, 24823), (122, 25042), (125, 25066), (127, 25081), (129, 25087), (138, 25168), (139, 25171),

Gene: KayMoney_35 Start: 24398, Stop: 25318, Start Num: 18

Candidate Starts for KayMoney_35:

(Start: 18 @24398 has 60 MA's), (37, 24554), (42, 24572), (45, 24584), (64, 24731), (65, 24740), (70, 24779), (78, 24848), (79, 24854), (84, 24887), (90, 24929), (97, 24980), (122, 25160), (125, 25184), (127, 25199), (129, 25205), (138, 25286), (139, 25289),

Gene: Kihatsu_37 Start: 26637, Stop: 27557, Start Num: 18

Candidate Starts for Kihatsu_37:

(Start: 18 @26637 has 60 MA's), (37, 26793), (42, 26811), (45, 26823), (64, 26970), (65, 26979), (70, 27018), (75, 27078), (78, 27087), (79, 27093), (84, 27126), (90, 27168), (93, 27180), (96, 27213), (97, 27219), (99, 27225), (109, 27303), (122, 27399), (129, 27444), (138, 27525), (139, 27528),

Gene: Kiko_37 Start: 28964, Stop: 29881, Start Num: 18

Candidate Starts for Kiko_37:

(Start: 17 @28958 has 15 MA's), (Start: 18 @28964 has 60 MA's), (46, 29147), (47, 29153), (49, 29159), (71, 29345), (78, 29408), (79, 29414), (82, 29429), (95, 29528), (96, 29534), (99, 29546), (109, 29621), (112, 29645), (113, 29648), (122, 29720), (123, 29723), (127, 29759),

Gene: Kimchi_55 Start: 37866, Stop: 38747, Start Num: 19

Candidate Starts for Kimchi_55:

(Start: 19 @37866 has 123 MA's), (Start: 21 @37878 has 1 MA's), (Start: 27 @37908 has 1 MA's), (32, 37965), (51, 38046), (52, 38070), (53, 38091), (55, 38103), (57, 38112), (62, 38151), (63, 38154), (66, 38181), (69, 38208), (72, 38220), (76, 38274), (83, 38310), (89, 38361), (96, 38409), (110, 38517), (116, 38556), (123, 38598), (128, 38637), (140, 38733), (141, 38739),

Gene: Kostya_53 Start: 38070, Stop: 38909, Start Num: 27

Candidate Starts for Kostya_53:

(Start: 19 @38028 has 123 MA's), (Start: 21 @38040 has 1 MA's), (Start: 27 @38070 has 1 MA's), (32, 38127), (51, 38208), (52, 38232), (53, 38253), (55, 38265), (57, 38274), (62, 38313), (63, 38316), (66, 38343), (69, 38370), (72, 38382), (76, 38436), (83, 38472), (89, 38523), (96, 38571), (110, 38679), (116, 38718), (123, 38760), (128, 38799), (140, 38895), (141, 38901),

Gene: Kromp_36 Start: 29237, Stop: 28317, Start Num: 16

Candidate Starts for Kromp_36:

(Start: 16 @29237 has 1 MA's), (20, 29210), (30, 29132), (43, 29051), (78, 28787), (84, 28748), (88, 28712), (106, 28589), (128, 28427), (130, 28421), (132, 28397),

Gene: Lawnathon_36 Start: 24435, Stop: 25352, Start Num: 18

Candidate Starts for Lawnathon_36:

(5, 24306), (8, 24312), (Start: 18 @24435 has 60 MA's), (37, 24591), (41, 24606), (45, 24618), (64, 24765), (65, 24774), (70, 24813), (73, 24858), (78, 24882), (79, 24888), (84, 24921), (90, 24963), (92, 24972), (97, 25014), (109, 25098), (127, 25233),

Gene: Lenoxika_36 Start: 26286, Stop: 27206, Start Num: 18

Candidate Starts for Lenoxika_36:

(Start: 18 @26286 has 60 MA's), (37, 26442), (42, 26460), (45, 26472), (64, 26619), (65, 26628), (70, 26667), (78, 26736), (79, 26742), (84, 26775), (90, 26817), (93, 26829), (97, 26868), (122, 27048), (125, 27072), (127, 27087), (129, 27093), (138, 27174), (139, 27177),

Gene: Lilac_55 Start: 37492, Stop: 38373, Start Num: 19

Candidate Starts for Lilac_55:

(Start: 19 @37492 has 123 MA's), (Start: 21 @37504 has 1 MA's), (Start: 27 @37534 has 1 MA's), (32, 37591), (51, 37672), (52, 37696), (53, 37717), (55, 37729), (57, 37738), (62, 37777), (63, 37780), (66, 37807), (69, 37834), (72, 37846), (76, 37900), (83, 37936), (89, 37987), (96, 38035), (110, 38143), (116, 38182), (123, 38224), (128, 38263), (140, 38359), (141, 38365),

Gene: Lilas_37 Start: 31522, Stop: 32445, Start Num: 17

Candidate Starts for Lilas_37:

(Start: 17 @31522 has 15 MA's), (Start: 18 @31528 has 60 MA's), (Start: 23 @31552 has 1 MA's), (34, 31648), (49, 31723), (54, 31795), (62, 31846), (71, 31909), (75, 31963), (78, 31972), (82, 31993), (83, 32002), (86, 32032), (96, 32098), (107, 32164), (109, 32185), (113, 32212), (118, 32248),

Gene: Lilizi_52 Start: 37166, Stop: 38047, Start Num: 19

Candidate Starts for Lilizi_52:

(Start: 19 @37166 has 123 MA's), (Start: 21 @37178 has 1 MA's), (Start: 27 @37208 has 1 MA's), (32, 37265), (51, 37346), (52, 37370), (53, 37391), (55, 37403), (57, 37412), (62, 37451), (63, 37454), (66, 37481), (69, 37508), (72, 37520), (76, 37574), (83, 37610), (89, 37661), (96, 37709), (110, 37817), (116, 37856), (123, 37898), (128, 37937), (140, 38033), (141, 38039),

Gene: Lilpickle_52 Start: 37383, Stop: 38264, Start Num: 19

Candidate Starts for Lilpickle_52:

(Start: 19 @37383 has 123 MA's), (Start: 21 @37395 has 1 MA's), (Start: 27 @37425 has 1 MA's), (32, 37482), (51, 37563), (52, 37587), (53, 37608), (55, 37620), (57, 37629), (62, 37668), (63, 37671), (66, 37698), (69, 37725), (72, 37737), (76, 37791), (83, 37827), (89, 37878), (96, 37926), (110, 38034), (116, 38073), (123, 38115), (128, 38154), (140, 38250), (141, 38256),

Gene: LonelyBoi_37 Start: 31310, Stop: 32227, Start Num: 18

Candidate Starts for LonelyBoi_37:

(Start: 17 @31304 has 15 MA's), (Start: 18 @31310 has 60 MA's), (Start: 23 @31334 has 1 MA's), (34, 31430), (49, 31505), (59, 31607), (62, 31628), (71, 31691), (75, 31745), (78, 31754), (82, 31775), (83, 31784), (86, 31814), (96, 31880), (101, 31904), (107, 31946), (109, 31967), (113, 31994), (118, 32030), (119, 32036),

Gene: MISSy_52 Start: 37590, Stop: 38471, Start Num: 19

Candidate Starts for MISSy_52:

(Start: 19 @37590 has 123 MA's), (Start: 21 @37602 has 1 MA's), (Start: 27 @37632 has 1 MA's), (32, 37689), (51, 37770), (52, 37794), (53, 37815), (55, 37827), (57, 37836), (62, 37875), (63, 37878), (66, 37905), (69, 37932), (72, 37944), (76, 37998), (83, 38034), (89, 38085), (96, 38133), (110, 38241), (116, 38280), (123, 38322), (128, 38361), (140, 38457), (141, 38463),

Gene: MPhalcon_52 Start: 37583, Stop: 38464, Start Num: 19

Candidate Starts for MPhalcon_52:

(Start: 19 @37583 has 123 MA's), (Start: 21 @37595 has 1 MA's), (Start: 27 @37625 has 1 MA's), (32, 37682), (51, 37763), (52, 37787), (53, 37808), (55, 37820), (57, 37829), (62, 37868), (63, 37871), (66, 37898), (69, 37925), (72, 37937), (76, 37991), (83, 38027), (89, 38078), (96, 38126), (110, 38234), (116, 38273), (123, 38315), (128, 38354), (140, 38450), (141, 38456),

Gene: MUWow_35 Start: 24597, Stop: 25514, Start Num: 18

Candidate Starts for MUWow_35:

(Start: 13 @24558 has 1 MA's), (Start: 18 @24597 has 60 MA's), (37, 24753), (41, 24768), (64, 24927), (73, 25020), (75, 25035), (78, 25044), (79, 25050), (82, 25065), (84, 25083), (90, 25125), (92, 25134), (99, 25182), (109, 25260), (113, 25287), (127, 25395), (139, 25485),

Gene: MadamMonkfish_52 Start: 37107, Stop: 37988, Start Num: 19

Candidate Starts for MadamMonkfish_52:

(Start: 19 @37107 has 123 MA's), (Start: 21 @37119 has 1 MA's), (Start: 27 @37149 has 1 MA's), (32, 37206), (51, 37287), (52, 37311), (53, 37332), (55, 37344), (57, 37353), (62, 37392), (63, 37395), (66, 37422), (69, 37449), (72, 37461), (76, 37515), (83, 37551), (89, 37602), (96, 37650), (110, 37758), (116, 37797), (123, 37839), (128, 37878), (140, 37974), (141, 37980),

Gene: Maja_28 Start: 23177, Stop: 24097, Start Num: 18

Candidate Starts for Maja_28:

(Start: 18 @23177 has 60 MA's), (37, 23333), (42, 23351), (45, 23363), (47, 23372), (52, 23420), (64, 23510), (70, 23558), (78, 23627), (79, 23633), (84, 23666), (90, 23708), (93, 23720), (97, 23759), (109, 23843), (113, 23870), (129, 23984), (139, 24068),

Gene: Malibo_38 Start: 29560, Stop: 30477, Start Num: 18

Candidate Starts for Malibo_38:

(Start: 17 @29554 has 15 MA's), (Start: 18 @29560 has 60 MA's), (34, 29680), (47, 29749), (49, 29755), (54, 29827), (59, 29857), (62, 29878), (71, 29941), (78, 30004), (82, 30025), (83, 30034), (86, 30064), (91, 30088), (109, 30217), (113, 30244), (118, 30280),

Gene: Manda_52 Start: 38388, Stop: 39269, Start Num: 19

Candidate Starts for Manda_52:

(Start: 19 @38388 has 123 MA's), (Start: 21 @38400 has 1 MA's), (Start: 27 @38430 has 1 MA's), (32, 38487), (51, 38568), (52, 38592), (53, 38613), (55, 38625), (57, 38634), (62, 38673), (63, 38676), (66, 38703), (69, 38730), (72, 38742), (76, 38796), (83, 38832), (89, 38883), (96, 38931), (110, 39039), (116, 39078), (123, 39120), (128, 39159), (140, 39255), (141, 39261),

Gene: Marshmallow_51 Start: 38363, Stop: 39244, Start Num: 19

Candidate Starts for Marshmallow_51:

(Start: 19 @38363 has 123 MA's), (Start: 21 @38375 has 1 MA's), (Start: 27 @38405 has 1 MA's), (32, 38462), (51, 38543), (52, 38567), (53, 38588), (55, 38600), (57, 38609), (62, 38648), (63, 38651), (66, 38678), (69, 38705), (72, 38717), (76, 38771), (83, 38807), (89, 38858), (96, 38906), (110, 39014), (116, 39053), (123, 39095), (128, 39134), (140, 39230), (141, 39236),

Gene: Marteena_35 Start: 28837, Stop: 29754, Start Num: 18

Candidate Starts for Marteena_35:

(Start: 17 @28831 has 15 MA's), (Start: 18 @28837 has 60 MA's), (Start: 23 @28861 has 1 MA's), (34, 28957), (47, 29026), (49, 29032), (62, 29155), (71, 29218), (75, 29272), (78, 29281), (82, 29302), (83, 29311), (86, 29341), (91, 29365), (107, 29473), (109, 29494), (113, 29521),

Gene: MaterMagnus_36 Start: 24582, Stop: 25499, Start Num: 18

Candidate Starts for MaterMagnus_36:

(5, 24453), (6, 24456), (8, 24459), (Start: 18 @24582 has 60 MA's), (37, 24738), (41, 24753), (45, 24765), (64, 24912), (65, 24921), (70, 24960), (73, 25005), (78, 25029), (79, 25035), (84, 25068), (90, 25110), (92, 25119), (97, 25161), (109, 25245), (125, 25365), (127, 25380),

Gene: Maxxinista_55 Start: 37462, Stop: 38343, Start Num: 19

Candidate Starts for Maxxinista_55:

(Start: 19 @37462 has 123 MA's), (Start: 21 @37474 has 1 MA's), (Start: 27 @37504 has 1 MA's), (32, 37561), (51, 37642), (52, 37666), (53, 37687), (55, 37699), (57, 37708), (62, 37747), (63, 37750), (66, 37777), (69, 37804), (72, 37816), (76, 37870), (83, 37906), (89, 37957), (96, 38005), (110, 38113), (116, 38152), (123, 38194), (128, 38233), (140, 38329), (141, 38335),

Gene: Mcklovin_34 Start: 32550, Stop: 33467, Start Num: 18

Candidate Starts for Mcklovin_34:

(Start: 17 @32544 has 15 MA's), (Start: 18 @32550 has 60 MA's), (47, 32739), (49, 32745), (59, 32847), (63, 32871), (71, 32931), (76, 32988), (78, 32994), (79, 33000), (95, 33114), (96, 33120), (99, 33132), (109, 33207), (112, 33231), (113, 33234), (118, 33270), (119, 33276), (123, 33309), (127, 33345), (134, 33390),

Gene: Melba_35 Start: 28919, Stop: 29845, Start Num: 17

Candidate Starts for Melba_35:

(Start: 17 @28919 has 15 MA's), (Start: 18 @28925 has 60 MA's), (33, 29042), (34, 29045), (46, 29108), (47, 29114), (49, 29120), (71, 29306), (75, 29360), (76, 29363), (78, 29369), (82, 29390), (95, 29489), (96, 29495), (99, 29507), (109, 29582), (113, 29609), (118, 29645), (127, 29720),

Gene: MichaelScott_36 Start: 28688, Stop: 29605, Start Num: 18

Candidate Starts for MichaelScott_36:

(Start: 17 @28682 has 15 MA's), (Start: 18 @28688 has 60 MA's), (47, 28877), (49, 28883), (59, 28985), (63, 29009), (71, 29069), (76, 29126), (78, 29132), (79, 29138), (95, 29252), (96, 29258), (99, 29270), (109, 29345), (112, 29369), (113, 29372), (118, 29408), (119, 29414), (123, 29447), (134, 29528),

Gene: MidnightRain_38 Start: 25380, Stop: 26300, Start Num: 18

Candidate Starts for MidnightRain_38:

(5, 25251), (8, 25257), (Start: 18 @25380 has 60 MA's), (31, 25494), (42, 25554), (45, 25566), (64, 25713), (70, 25761), (73, 25806), (78, 25830), (79, 25836), (81, 25845), (84, 25869), (90, 25911), (93, 25923), (97, 25962), (101, 25980), (109, 26046), (125, 26166), (127, 26181),

Gene: Mindy_51 Start: 36971, Stop: 37852, Start Num: 19

Candidate Starts for Mindy_51:

(Start: 19 @36971 has 123 MA's), (Start: 21 @36983 has 1 MA's), (Start: 27 @37013 has 1 MA's), (32, 37070), (51, 37151), (52, 37175), (53, 37196), (55, 37208), (57, 37217), (62, 37256), (63, 37259), (66, 37286), (69, 37313), (72, 37325), (76, 37379), (83, 37415), (89, 37466), (96, 37514), (110, 37622), (116, 37661), (123, 37703), (128, 37742), (140, 37838), (141, 37844),

Gene: Miniwave_49 Start: 37424, Stop: 38305, Start Num: 19

Candidate Starts for Miniwave_49:

(Start: 19 @37424 has 123 MA's), (Start: 21 @37436 has 1 MA's), (Start: 27 @37466 has 1 MA's), (32, 37523), (51, 37604), (52, 37628), (53, 37649), (55, 37661), (57, 37670), (62, 37709), (63, 37712), (66, 37739), (69, 37766), (72, 37778), (76, 37832), (83, 37868), (89, 37919), (96, 37967), (110, 38075), (116, 38114), (123, 38156), (128, 38195), (140, 38291), (141, 38297),

Gene: Misfit_54 Start: 38602, Stop: 39483, Start Num: 19

Candidate Starts for Misfit_54:

(Start: 19 @38602 has 123 MA's), (Start: 21 @38614 has 1 MA's), (Start: 27 @38644 has 1 MA's), (32, 38701), (51, 38782), (52, 38806), (53, 38827), (55, 38839), (57, 38848), (62, 38887), (63, 38890), (66, 38917), (69, 38944), (72, 38956), (76, 39010), (83, 39046), (89, 39097), (96, 39145), (110, 39253), (116, 39292), (123, 39334), (128, 39373), (140, 39469), (141, 39475),

Gene: Moldemort_55 Start: 37980, Stop: 38861, Start Num: 19

Candidate Starts for Moldemort_55:

(Start: 19 @37980 has 123 MA's), (Start: 21 @37992 has 1 MA's), (Start: 27 @38022 has 1 MA's), (32, 38079), (51, 38160), (52, 38184), (53, 38205), (55, 38217), (57, 38226), (62, 38265), (63, 38268), (66, 38295), (69, 38322), (72, 38334), (76, 38388), (83, 38424), (89, 38475), (96, 38523), (110, 38631), (116, 38670), (123, 38712), (128, 38751), (140, 38847), (141, 38853),

Gene: Moonflower_36 Start: 30479, Stop: 31372, Start Num: 23

Candidate Starts for Moonflower_36:

(Start: 17 @30449 has 15 MA's), (Start: 18 @30455 has 60 MA's), (Start: 23 @30479 has 1 MA's), (25, 30497), (33, 30572), (34, 30575), (47, 30644), (49, 30650), (63, 30776), (71, 30836), (75, 30890), (78, 30899), (82, 30920), (83, 30929), (86, 30959), (107, 31091), (109, 31112), (112, 31136), (113, 31139), (118, 31175), (121, 31196), (126, 31241),

Gene: Mosby_48 Start: 36885, Stop: 37766, Start Num: 19

Candidate Starts for Mosby_48:

(Start: 19 @36885 has 123 MA's), (Start: 21 @36897 has 1 MA's), (Start: 27 @36927 has 1 MA's), (32, 36984), (51, 37065), (52, 37089), (53, 37110), (55, 37122), (57, 37131), (62, 37170), (63, 37173), (66, 37200), (69, 37227), (72, 37239), (76, 37293), (83, 37329), (89, 37380), (96, 37428), (110, 37536), (116, 37575), (123, 37617), (128, 37656), (140, 37752), (141, 37758),

Gene: Murica_54 Start: 38537, Stop: 39418, Start Num: 19

Candidate Starts for Murica_54:

(Start: 19 @38537 has 123 MA's), (Start: 21 @38549 has 1 MA's), (Start: 27 @38579 has 1 MA's), (32, 38636), (51, 38717), (52, 38741), (53, 38762), (55, 38774), (57, 38783), (62, 38822), (63, 38825), (66, 38852), (69, 38879), (72, 38891), (76, 38945), (83, 38981), (89, 39032), (96, 39080), (110, 39188), (116, 39227), (123, 39269), (128, 39308), (140, 39404), (141, 39410),

Gene: Murphy_54 Start: 37974, Stop: 38855, Start Num: 19

Candidate Starts for Murphy_54:

(Start: 19 @37974 has 123 MA's), (Start: 21 @37986 has 1 MA's), (Start: 27 @38016 has 1 MA's), (32, 38073), (51, 38154), (52, 38178), (53, 38199), (55, 38211), (57, 38220), (62, 38259), (63, 38262), (66, 38289), (69, 38316), (72, 38328), (76, 38382), (83, 38418), (89, 38469), (96, 38517), (110, 38625), (116, 38664), (123, 38706), (128, 38745), (140, 38841), (141, 38847),

Gene: Mutzi_37 Start: 33648, Stop: 34565, Start Num: 18

Candidate Starts for Mutzi_37:

(Start: 17 @33642 has 15 MA's), (Start: 18 @33648 has 60 MA's), (34, 33768), (47, 33837), (49, 33843), (50, 33852), (59, 33945), (74, 34080), (75, 34083), (76, 34086), (78, 34092), (82, 34113), (91, 34176), (94, 34209), (95, 34212), (99, 34230), (107, 34284), (109, 34305), (112, 34329), (113, 34332), (118, 34368), (119, 34374), (121, 34389), (127, 34443), (139, 34536), (142, 34557),

Gene: Myrale_52 Start: 38228, Stop: 39109, Start Num: 19

Candidate Starts for Myrale_52:

(Start: 19 @38228 has 123 MA's), (Start: 21 @38240 has 1 MA's), (Start: 27 @38270 has 1 MA's), (32, 38327), (51, 38408), (52, 38432), (53, 38453), (55, 38465), (57, 38474), (62, 38513), (63, 38516), (66, 38543), (69, 38570), (72, 38582), (76, 38636), (83, 38672), (89, 38723), (96, 38771), (110, 38879), (116, 38918), (123, 38960), (128, 38999), (140, 39095), (141, 39101),

Gene: Nala_53 Start: 38095, Stop: 38976, Start Num: 19

Candidate Starts for Nala_53:

(Start: 19 @38095 has 123 MA's), (Start: 21 @38107 has 1 MA's), (Start: 27 @38137 has 1 MA's), (32, 38194), (51, 38275), (52, 38299), (53, 38320), (55, 38332), (57, 38341), (62, 38380), (63, 38383), (66, 38410), (69, 38437), (72, 38449), (76, 38503), (83, 38539), (89, 38590), (96, 38638), (110, 38746), (116, 38785), (123, 38827), (128, 38866), (140, 38962), (141, 38968),

Gene: Nandita_36 Start: 26292, Stop: 27212, Start Num: 18

Candidate Starts for Nandita_36:

(Start: 13 @26250 has 1 MA's), (Start: 18 @26292 has 60 MA's), (37, 26448), (42, 26466), (45, 26478), (64, 26625), (70, 26673), (75, 26733), (78, 26742), (79, 26748), (84, 26781), (87, 26805), (90, 26823), (93, 26835), (97, 26874), (122, 27054), (125, 27078), (127, 27093), (129, 27099), (138, 27180), (139, 27183),

Gene: NelitzaMV_49 Start: 37172, Stop: 38053, Start Num: 19

Candidate Starts for NelitzaMV_49:

(Start: 19 @37172 has 123 MA's), (Start: 21 @37184 has 1 MA's), (Start: 27 @37214 has 1 MA's), (32, 37271), (51, 37352), (52, 37376), (53, 37397), (55, 37409), (57, 37418), (62, 37457), (63, 37460), (66, 37487), (69, 37514), (72, 37526), (76, 37580), (83, 37616), (89, 37667), (96, 37715), (110, 37823), (116, 37862), (123, 37904), (128, 37943), (140, 38039), (141, 38045),

Gene: Nimrod_55 Start: 38795, Stop: 39676, Start Num: 19

Candidate Starts for Nimrod_55:

(Start: 19 @38795 has 123 MA's), (Start: 21 @38807 has 1 MA's), (Start: 27 @38837 has 1 MA's), (32, 38894), (51, 38975), (52, 38999), (53, 39020), (55, 39032), (57, 39041), (62, 39080), (63, 39083), (66, 39110), (69, 39137), (72, 39149), (76, 39203), (83, 39239), (89, 39290), (96, 39338), (110, 39446), (116, 39485), (123, 39527), (128, 39566), (140, 39662), (141, 39668),

Gene: NoSleep_54 Start: 37734, Stop: 38615, Start Num: 19

Candidate Starts for NoSleep_54:

(Start: 19 @37734 has 123 MA's), (Start: 21 @37746 has 1 MA's), (Start: 27 @37776 has 1 MA's), (32, 37833), (51, 37914), (52, 37938), (53, 37959), (55, 37971), (57, 37980), (62, 38019), (63, 38022), (66,

38049), (69, 38076), (72, 38088), (76, 38142), (83, 38178), (89, 38229), (96, 38277), (110, 38385), (116, 38424), (123, 38466), (128, 38505), (140, 38601), (141, 38607),

Gene: Oregano_37 Start: 27817, Stop: 28734, Start Num: 18

Candidate Starts for Oregano_37:

(Start: 17 @27811 has 15 MA's), (Start: 18 @27817 has 60 MA's), (47, 28006), (49, 28012), (59, 28114), (63, 28138), (71, 28198), (76, 28255), (78, 28261), (79, 28267), (95, 28381), (96, 28387), (99, 28399), (109, 28474), (112, 28498), (113, 28501), (118, 28537), (119, 28543), (123, 28576),

Gene: OrionPax_51 Start: 37179, Stop: 38060, Start Num: 19

Candidate Starts for OrionPax_51:

(Start: 19 @37179 has 123 MA's), (Start: 21 @37191 has 1 MA's), (Start: 27 @37221 has 1 MA's), (32, 37278), (51, 37359), (52, 37383), (53, 37404), (55, 37416), (57, 37425), (62, 37464), (63, 37467), (66, 37494), (69, 37521), (72, 37533), (76, 37587), (83, 37623), (89, 37674), (96, 37722), (110, 37830), (116, 37869), (123, 37911), (128, 37950), (140, 38046), (141, 38052),

Gene: Palpatine_55 Start: 38567, Stop: 39448, Start Num: 19

Candidate Starts for Palpatine_55:

(Start: 19 @38567 has 123 MA's), (Start: 21 @38579 has 1 MA's), (Start: 27 @38609 has 1 MA's), (32, 38666), (51, 38747), (52, 38771), (53, 38792), (55, 38804), (57, 38813), (62, 38852), (63, 38855), (66, 38882), (69, 38909), (72, 38921), (76, 38975), (83, 39011), (89, 39062), (96, 39110), (110, 39218), (116, 39257), (123, 39299), (128, 39338), (140, 39434), (141, 39440),

Gene: Paperbeatsrock_51 Start: 38102, Stop: 38983, Start Num: 19

Candidate Starts for Paperbeatsrock_51:

(Start: 19 @38102 has 123 MA's), (Start: 21 @38114 has 1 MA's), (Start: 27 @38144 has 1 MA's), (32, 38201), (51, 38282), (52, 38306), (53, 38327), (55, 38339), (57, 38348), (62, 38387), (63, 38390), (66, 38417), (69, 38444), (72, 38456), (76, 38510), (83, 38546), (89, 38597), (96, 38645), (110, 38753), (116, 38792), (123, 38834), (128, 38873), (140, 38969), (141, 38975),

Gene: Pat3_50 Start: 36332, Stop: 37213, Start Num: 19

Candidate Starts for Pat3_50:

(Start: 19 @36332 has 123 MA's), (Start: 21 @36344 has 1 MA's), (Start: 27 @36374 has 1 MA's), (32, 36431), (51, 36512), (52, 36536), (53, 36557), (55, 36569), (57, 36578), (62, 36617), (63, 36620), (66, 36647), (69, 36674), (72, 36686), (76, 36740), (83, 36776), (89, 36827), (96, 36875), (110, 36983), (116, 37022), (123, 37064), (128, 37103), (140, 37199), (141, 37205),

Gene: PeggyLeg03_34 Start: 24890, Stop: 25810, Start Num: 18

Candidate Starts for PeggyLeg03_34:

(Start: 18 @24890 has 60 MA's), (37, 25046), (42, 25064), (45, 25076), (64, 25223), (65, 25232), (70, 25271), (78, 25340), (79, 25346), (84, 25379), (90, 25421), (93, 25433), (122, 25652), (124, 25664), (125, 25676), (127, 25691), (129, 25697), (138, 25778), (139, 25781),

Gene: Petra64142_57 Start: 39031, Stop: 39912, Start Num: 19

Candidate Starts for Petra64142_57:

(Start: 19 @39031 has 123 MA's), (Start: 21 @39043 has 1 MA's), (Start: 27 @39073 has 1 MA's), (32, 39130), (51, 39211), (52, 39235), (53, 39256), (55, 39268), (57, 39277), (62, 39316), (63, 39319), (66, 39346), (69, 39373), (72, 39385), (76, 39439), (83, 39475), (89, 39526), (96, 39574), (110, 39682), (116, 39721), (123, 39763), (128, 39802), (140, 39898), (141, 39904),

Gene: Phaja_50 Start: 37928, Stop: 38809, Start Num: 19

Candidate Starts for Phaja_50:

(Start: 19 @37928 has 123 MA's), (Start: 21 @37940 has 1 MA's), (Start: 27 @37970 has 1 MA's), (32, 38027), (51, 38108), (52, 38132), (53, 38153), (55, 38165), (57, 38174), (62, 38213), (63, 38216), (66, 38243), (69, 38270), (72, 38282), (76, 38336), (83, 38372), (89, 38423), (96, 38471), (110, 38579), (116, 38618), (123, 38660), (128, 38699), (140, 38795), (141, 38801),

Gene: Pharsalus_50 Start: 37902, Stop: 38783, Start Num: 19

Candidate Starts for Pharsalus_50:

(Start: 19 @37902 has 123 MA's), (Start: 21 @37914 has 1 MA's), (Start: 27 @37944 has 1 MA's), (32, 38001), (51, 38082), (52, 38106), (53, 38127), (55, 38139), (57, 38148), (62, 38187), (63, 38190), (66, 38217), (69, 38244), (72, 38256), (76, 38310), (83, 38346), (89, 38397), (96, 38445), (110, 38553), (116, 38592), (123, 38634), (128, 38673), (140, 38769), (141, 38775),

Gene: PhatBacter_55 Start: 38581, Stop: 39462, Start Num: 19

Candidate Starts for PhatBacter_55:

(Start: 19 @38581 has 123 MA's), (Start: 21 @38593 has 1 MA's), (Start: 27 @38623 has 1 MA's), (32, 38680), (51, 38761), (52, 38785), (53, 38806), (55, 38818), (57, 38827), (62, 38866), (63, 38869), (66, 38896), (69, 38923), (72, 38935), (76, 38989), (83, 39025), (89, 39076), (96, 39124), (110, 39232), (116, 39271), (123, 39313), (128, 39352), (140, 39448), (141, 39454),

Gene: Phaux_54 Start: 38579, Stop: 39460, Start Num: 19

Candidate Starts for Phaux_54:

(Start: 19 @38579 has 123 MA's), (Start: 21 @38591 has 1 MA's), (Start: 27 @38621 has 1 MA's), (32, 38678), (51, 38759), (52, 38783), (53, 38804), (55, 38816), (57, 38825), (62, 38864), (63, 38867), (66, 38894), (69, 38921), (72, 38933), (76, 38987), (83, 39023), (89, 39074), (96, 39122), (110, 39230), (116, 39269), (123, 39311), (128, 39350), (140, 39446), (141, 39452),

Gene: PhriskyACE_35 Start: 28658, Stop: 29575, Start Num: 18

Candidate Starts for PhriskyACE_35:

(Start: 17 @28652 has 15 MA's), (Start: 18 @28658 has 60 MA's), (46, 28841), (47, 28847), (49, 28853), (71, 29039), (78, 29102), (79, 29108), (82, 29123), (95, 29222), (96, 29228), (99, 29240), (109, 29315), (112, 29339), (113, 29342), (118, 29378), (119, 29384), (120, 29396), (127, 29453), (134, 29498),

Gene: Phrux_50 Start: 37172, Stop: 38053, Start Num: 19

Candidate Starts for Phrux_50:

(Start: 19 @37172 has 123 MA's), (Start: 21 @37184 has 1 MA's), (Start: 27 @37214 has 1 MA's), (32, 37271), (51, 37352), (52, 37376), (53, 37397), (55, 37409), (57, 37418), (62, 37457), (63, 37460), (66, 37487), (69, 37514), (72, 37526), (76, 37580), (83, 37616), (89, 37667), (96, 37715), (110, 37823), (116, 37862), (123, 37904), (128, 37943), (140, 38039), (141, 38045),

Gene: Pipp_33 Start: 27701, Stop: 28627, Start Num: 17

Candidate Starts for Pipp_33:

(Start: 17 @27701 has 15 MA's), (Start: 18 @27707 has 60 MA's), (33, 27824), (34, 27827), (46, 27890), (47, 27896), (49, 27902), (59, 28004), (71, 28088), (75, 28142), (76, 28145), (78, 28151), (82, 28172), (95, 28271), (99, 28289), (109, 28364), (113, 28391), (118, 28427), (127, 28502),

Gene: Policronamos_55 Start: 38579, Stop: 39460, Start Num: 19

Candidate Starts for Policronamos_55:

(Start: 19 @38579 has 123 MA's), (Start: 21 @38591 has 1 MA's), (Start: 27 @38621 has 1 MA's), (32, 38678), (51, 38759), (52, 38783), (53, 38804), (55, 38816), (57, 38825), (62, 38864), (63, 38867), (66, 38894), (69, 38921), (72, 38933), (76, 38987), (83, 39023), (89, 39074), (96, 39122), (110, 39230), (116, 39269), (123, 39311), (128, 39350), (140, 39446), (141, 39452),

Gene: Pollux_37 Start: 30910, Stop: 31827, Start Num: 18

Candidate Starts for Pollux_37:

(Start: 17 @30904 has 15 MA's), (Start: 18 @30910 has 60 MA's), (Start: 23 @30934 has 1 MA's), (34, 31030), (47, 31099), (49, 31105), (62, 31228), (71, 31291), (75, 31345), (78, 31354), (82, 31375), (83, 31384), (86, 31414), (91, 31438), (107, 31546), (109, 31567), (113, 31594),

Gene: Popper_34 Start: 26204, Stop: 27124, Start Num: 18

Candidate Starts for Popper_34:

(Start: 18 @26204 has 60 MA's), (24, 26243), (37, 26360), (42, 26378), (45, 26390), (64, 26537), (70, 26585), (75, 26645), (78, 26654), (79, 26660), (84, 26693), (90, 26735), (93, 26747), (97, 26786), (122, 26966), (125, 26990), (127, 27005), (129, 27011), (138, 27092), (139, 27095),

Gene: Porky_51 Start: 37298, Stop: 38179, Start Num: 19

Candidate Starts for Porky_51:

(Start: 19 @37298 has 123 MA's), (Start: 21 @37310 has 1 MA's), (Start: 27 @37340 has 1 MA's), (32, 37397), (51, 37478), (52, 37502), (53, 37523), (55, 37535), (57, 37544), (62, 37583), (63, 37586), (66, 37613), (69, 37640), (72, 37652), (76, 37706), (83, 37742), (89, 37793), (96, 37841), (110, 37949), (116, 37988), (123, 38030), (128, 38069), (140, 38165), (141, 38171),

Gene: Pucara_31 Start: 24120, Stop: 25040, Start Num: 18

Candidate Starts for Pucara_31:

(Start: 18 @24120 has 60 MA's), (37, 24276), (42, 24294), (45, 24306), (64, 24453), (65, 24462), (70, 24501), (78, 24570), (79, 24576), (84, 24609), (90, 24651), (122, 24882), (125, 24906), (129, 24927), (138, 25008), (139, 25011),

Gene: Pumpkin_54 Start: 38229, Stop: 39110, Start Num: 19

Candidate Starts for Pumpkin_54:

(Start: 19 @38229 has 123 MA's), (Start: 21 @38241 has 1 MA's), (Start: 27 @38271 has 1 MA's), (32, 38328), (51, 38409), (52, 38433), (53, 38454), (55, 38466), (57, 38475), (62, 38514), (63, 38517), (66, 38544), (69, 38571), (72, 38583), (76, 38637), (83, 38673), (89, 38724), (96, 38772), (110, 38880), (116, 38919), (123, 38961), (128, 39000), (140, 39096), (141, 39102),

Gene: Pytheas_34 Start: 28853, Stop: 29788, Start Num: 17

Candidate Starts for Pytheas_34:

(12, 28799), (Start: 17 @28853 has 15 MA's), (34, 28985), (52, 29102), (59, 29162), (60, 29165), (63, 29186), (74, 29297), (78, 29309), (90, 29390), (98, 29444), (100, 29450), (103, 29468), (109, 29528), (112, 29552), (113, 29555), (118, 29591), (119, 29597), (131, 29675), (136, 29735),

Gene: Quallification_53 Start: 38217, Stop: 39098, Start Num: 19

Candidate Starts for Quallification_53:

(Start: 19 @38217 has 123 MA's), (Start: 21 @38229 has 1 MA's), (Start: 27 @38259 has 1 MA's), (32, 38316), (51, 38397), (52, 38421), (53, 38442), (55, 38454), (57, 38463), (62, 38502), (63, 38505), (66, 38532), (69, 38559), (72, 38571), (76, 38625), (83, 38661), (89, 38712), (96, 38760), (110, 38868), (116, 38907), (123, 38949), (128, 38988), (140, 39084), (141, 39090),

Gene: QuinnAvery_38 Start: 27407, Stop: 28369, Start Num: 13

Candidate Starts for QuinnAvery_38:

(Start: 13 @27407 has 1 MA's), (Start: 18 @27449 has 60 MA's), (37, 27605), (42, 27623), (45, 27635), (64, 27782), (65, 27791), (70, 27830), (74, 27887), (78, 27899), (79, 27905), (84, 27938), (87, 27962), (90, 27980), (93, 27992), (122, 28211), (125, 28235), (127, 28250), (129, 28256), (138, 28337), (139, 28340),

Gene: RadFad_36 Start: 24572, Stop: 25492, Start Num: 18

Candidate Starts for RadFad_36:

(5, 24443), (10, 24470), (Start: 18 @24572 has 60 MA's), (31, 24686), (42, 24746), (45, 24758), (52, 24815), (64, 24905), (70, 24953), (78, 25022), (79, 25028), (84, 25061), (87, 25085), (125, 25358), (127, 25373), (129, 25379),

Gene: Rakim_54 Start: 37979, Stop: 38860, Start Num: 19

Candidate Starts for Rakim_54:

(Start: 19 @37979 has 123 MA's), (Start: 21 @37991 has 1 MA's), (Start: 27 @38021 has 1 MA's), (32, 38078), (51, 38159), (52, 38183), (53, 38204), (55, 38216), (57, 38225), (62, 38264), (63, 38267), (66, 38294), (69, 38321), (72, 38333), (76, 38387), (83, 38423), (89, 38474), (96, 38522), (110, 38630), (116, 38669), (123, 38711), (128, 38750), (140, 38846), (141, 38852),

Gene: Raphaella_36 Start: 24506, Stop: 25423, Start Num: 18

Candidate Starts for Raphaella_36:

(5, 24377), (8, 24383), (Start: 18 @24506 has 60 MA's), (37, 24662), (41, 24677), (45, 24689), (64, 24836), (65, 24845), (70, 24884), (73, 24929), (78, 24953), (79, 24959), (84, 24992), (90, 25034), (92, 25043), (97, 25085), (109, 25169), (125, 25289), (127, 25304),

Gene: Richie_36 Start: 24587, Stop: 25504, Start Num: 18

Candidate Starts for Richie_36:

(5, 24458), (8, 24464), (Start: 18 @24587 has 60 MA's), (41, 24758), (45, 24770), (52, 24827), (64, 24917), (65, 24926), (70, 24965), (73, 25010), (78, 25034), (79, 25040), (84, 25073), (90, 25115), (92, 25124), (97, 25166), (109, 25250), (125, 25370), (127, 25385),

Gene: Rimmer_53 Start: 37921, Stop: 38802, Start Num: 19

Candidate Starts for Rimmer_53:

(Start: 19 @37921 has 123 MA's), (Start: 21 @37933 has 1 MA's), (Start: 27 @37963 has 1 MA's), (32, 38020), (51, 38101), (52, 38125), (53, 38146), (55, 38158), (57, 38167), (62, 38206), (63, 38209), (66, 38236), (69, 38263), (72, 38275), (76, 38329), (83, 38365), (89, 38416), (96, 38464), (110, 38572), (116, 38611), (123, 38653), (128, 38692), (140, 38788), (141, 38794),

Gene: RiverMonster_53 Start: 37750, Stop: 38631, Start Num: 19

Candidate Starts for RiverMonster_53:

(Start: 19 @37750 has 123 MA's), (Start: 21 @37762 has 1 MA's), (Start: 27 @37792 has 1 MA's), (32, 37849), (51, 37930), (52, 37954), (53, 37975), (55, 37987), (57, 37996), (62, 38035), (63, 38038), (66, 38065), (69, 38092), (72, 38104), (76, 38158), (83, 38194), (89, 38245), (96, 38293), (110, 38401), (116, 38440), (123, 38482), (128, 38521), (140, 38617), (141, 38623),

Gene: Ryan_36 Start: 26903, Stop: 27823, Start Num: 18

Candidate Starts for Ryan_36:

(Start: 13 @26861 has 1 MA's), (Start: 18 @26903 has 60 MA's), (37, 27059), (42, 27077), (45, 27089), (64, 27236), (65, 27245), (70, 27284), (78, 27353), (79, 27359), (84, 27392), (87, 27416), (90, 27434), (93, 27446), (97, 27485), (122, 27665), (125, 27689), (127, 27704), (129, 27710), (138, 27791), (139, 27794),

Gene: Saints25_53 Start: 37462, Stop: 38343, Start Num: 19

Candidate Starts for Saints25_53:

(Start: 19 @37462 has 123 MA's), (Start: 21 @37474 has 1 MA's), (Start: 27 @37504 has 1 MA's), (32, 37561), (51, 37642), (52, 37666), (53, 37687), (55, 37699), (57, 37708), (62, 37747), (63, 37750), (66, 37777), (69, 37804), (72, 37816), (76, 37870), (83, 37906), (89, 37957), (96, 38005), (110, 38113), (116, 38152), (123, 38194), (128, 38233), (140, 38329), (141, 38335),

Gene: Sakai_36 Start: 24515, Stop: 25432, Start Num: 18

Candidate Starts for Sakai_36:

(5, 24386), (8, 24392), (Start: 18 @24515 has 60 MA's), (37, 24671), (41, 24686), (45, 24698), (64, 24845), (65, 24854), (70, 24893), (73, 24938), (78, 24962), (79, 24968), (84, 25001), (90, 25043), (92, 25052), (97, 25094), (109, 25178), (125, 25298), (127, 25313),

Gene: Samman98_36 Start: 27315, Stop: 28232, Start Num: 18

Candidate Starts for Samman98_36:

(Start: 17 @27309 has 15 MA's), (Start: 18 @27315 has 60 MA's), (47, 27504), (49, 27510), (59, 27612), (63, 27636), (71, 27696), (76, 27753), (78, 27759), (79, 27765), (95, 27879), (96, 27885), (99, 27897), (109, 27972), (112, 27996), (113, 27999), (118, 28035), (119, 28041), (120, 28053), (134, 28155),

Gene: Sashimi_35 Start: 25890, Stop: 26810, Start Num: 18

Candidate Starts for Sashimi_35:

(5, 25755), (6, 25758), (9, 25773), (10, 25782), (Start: 13 @25848 has 1 MA's), (Start: 18 @25890 has 60 MA's), (37, 26046), (39, 26052), (42, 26064), (45, 26076), (64, 26223), (65, 26232), (70, 26271), (73, 26316), (78, 26340), (79, 26346), (93, 26433), (101, 26490), (108, 26550), (109, 26556), (113, 26583), (125, 26676), (127, 26691), (139, 26781),

Gene: Sassay_46 Start: 35849, Stop: 36730, Start Num: 19

Candidate Starts for Sassay_46:

(Start: 19 @35849 has 123 MA's), (Start: 21 @35861 has 1 MA's), (Start: 27 @35891 has 1 MA's), (32, 35948), (51, 36029), (52, 36053), (53, 36074), (55, 36086), (57, 36095), (62, 36134), (63, 36137), (66, 36164), (69, 36191), (72, 36203), (76, 36257), (83, 36293), (89, 36344), (96, 36392), (110, 36500), (116, 36539), (123, 36581), (128, 36620), (140, 36716), (141, 36722),

Gene: Schism_38 Start: 27082, Stop: 28002, Start Num: 18

Candidate Starts for Schism_38:

(Start: 13 @27040 has 1 MA's), (Start: 18 @27082 has 60 MA's), (37, 27238), (42, 27256), (45, 27268), (52, 27325), (64, 27415), (65, 27424), (70, 27463), (75, 27523), (78, 27532), (79, 27538), (84, 27571), (90, 27613), (93, 27625), (97, 27664), (122, 27844), (125, 27868), (127, 27883), (129, 27889), (138, 27970), (139, 27973),

Gene: Seahorse_38 Start: 26187, Stop: 27107, Start Num: 18

Candidate Starts for Seahorse_38:

(5, 26058), (8, 26064), (Start: 18 @26187 has 60 MA's), (31, 26301), (40, 26352), (42, 26361), (45, 26373), (52, 26430), (64, 26520), (65, 26529), (70, 26568), (78, 26637), (79, 26643), (81, 26652), (84, 26676), (87, 26700), (111, 26874), (125, 26973), (127, 26988), (139, 27078),

Gene: ShamWow_52 Start: 38365, Stop: 39246, Start Num: 19

Candidate Starts for ShamWow_52:

(Start: 19 @38365 has 123 MA's), (Start: 21 @38377 has 1 MA's), (Start: 27 @38407 has 1 MA's), (32, 38464), (51, 38545), (52, 38569), (53, 38590), (55, 38602), (57, 38611), (62, 38650), (63, 38653), (66, 38680), (69, 38707), (72, 38719), (76, 38773), (83, 38809), (89, 38860), (96, 38908), (110, 39016), (116, 39055), (123, 39097), (128, 39136), (140, 39232), (141, 39238),

Gene: ShereKhan_50 Start: 38141, Stop: 39022, Start Num: 19

Candidate Starts for ShereKhan_50:

(Start: 19 @38141 has 123 MA's), (Start: 21 @38153 has 1 MA's), (Start: 27 @38183 has 1 MA's), (32, 38240), (51, 38321), (52, 38345), (53, 38366), (55, 38378), (57, 38387), (62, 38426), (63, 38429), (66, 38456), (69, 38483), (72, 38495), (76, 38549), (83, 38585), (89, 38636), (96, 38684), (110, 38792), (116, 38831), (123, 38873), (128, 38912), (140, 39008), (141, 39014),

Gene: Shlim410_35 Start: 30765, Stop: 31682, Start Num: 18

Candidate Starts for Shlim410_35:

(Start: 17 @30759 has 15 MA's), (Start: 18 @30765 has 60 MA's), (45, 30945), (47, 30954), (49, 30960), (68, 31131), (71, 31146), (76, 31203), (78, 31209), (79, 31215), (82, 31230), (95, 31329), (96, 31335), (99, 31347), (109, 31422), (112, 31446), (113, 31449), (118, 31485), (119, 31491), (120, 31503), (134, 31605),

Gene: Shukran_39 Start: 25561, Stop: 26481, Start Num: 18

Candidate Starts for Shukran_39:

(Start: 18 @25561 has 60 MA's), (31, 25675), (42, 25735), (45, 25747), (64, 25894), (65, 25903), (70, 25942), (73, 25987), (78, 26011), (79, 26017), (81, 26026), (84, 26050), (90, 26092), (91, 26095), (92, 26101), (97, 26143), (101, 26161), (109, 26227), (113, 26254), (125, 26347), (127, 26362),

Gene: Simpliphy_51 Start: 37446, Stop: 38327, Start Num: 19

Candidate Starts for Simpliphy_51:

(Start: 19 @37446 has 123 MA's), (Start: 21 @37458 has 1 MA's), (Start: 27 @37488 has 1 MA's), (32, 37545), (51, 37626), (52, 37650), (53, 37671), (55, 37683), (57, 37692), (62, 37731), (63, 37734), (66, 37761), (69, 37788), (72, 37800), (76, 37854), (83, 37890), (89, 37941), (96, 37989), (110, 38097), (116, 38136), (123, 38178), (128, 38217), (140, 38313), (141, 38319),

Gene: SirDuracell_51 Start: 36422, Stop: 37303, Start Num: 19

Candidate Starts for SirDuracell_51:

(Start: 19 @36422 has 123 MA's), (Start: 21 @36434 has 1 MA's), (Start: 27 @36464 has 1 MA's), (32, 36521), (51, 36602), (52, 36626), (53, 36647), (55, 36659), (57, 36668), (62, 36707), (63, 36710), (66, 36737), (69, 36764), (72, 36776), (76, 36830), (83, 36866), (89, 36917), (96, 36965), (110, 37073), (116, 37112), (123, 37154), (128, 37193), (140, 37289), (141, 37295),

Gene: Sixama_89 Start: 47436, Stop: 48350, Start Num: 23

Candidate Starts for Sixama_89:

(Start: 23 @47436 has 1 MA's), (28, 47481), (36, 47538), (39, 47568), (44, 47586), (53, 47667), (56, 47685), (71, 47796), (73, 47853), (77, 47874), (78, 47877), (102, 48027), (104, 48063), (107, 48072),

Gene: SophKB_49 Start: 37121, Stop: 38002, Start Num: 19

Candidate Starts for SophKB_49:

(Start: 19 @37121 has 123 MA's), (Start: 21 @37133 has 1 MA's), (Start: 27 @37163 has 1 MA's), (32, 37220), (51, 37301), (52, 37325), (53, 37346), (55, 37358), (57, 37367), (62, 37406), (63, 37409), (66, 37436), (69, 37463), (72, 37475), (76, 37529), (83, 37565), (89, 37616), (96, 37664), (110, 37772), (116, 37811), (123, 37853), (128, 37892), (140, 37988), (141, 37994),

Gene: Sotrice96_53 Start: 37827, Stop: 38708, Start Num: 19

Candidate Starts for Sotrice96_53:

(Start: 19 @37827 has 123 MA's), (Start: 21 @37839 has 1 MA's), (Start: 27 @37869 has 1 MA's), (32, 37926), (51, 38007), (52, 38031), (53, 38052), (55, 38064), (57, 38073), (62, 38112), (63, 38115), (66, 38142), (69, 38169), (72, 38181), (76, 38235), (83, 38271), (89, 38322), (96, 38370), (110, 38478), (116, 38517), (123, 38559), (128, 38598), (140, 38694), (141, 38700),

Gene: SpicyFrank_36 Start: 24807, Stop: 25724, Start Num: 18

Candidate Starts for SpicyFrank_36:

(5, 24678), (8, 24684), (Start: 18 @24807 has 60 MA's), (37, 24963), (41, 24978), (45, 24990), (64, 25137), (70, 25185), (73, 25230), (78, 25254), (79, 25260), (84, 25293), (90, 25335), (92, 25344), (93, 25347), (99, 25392), (109, 25470), (122, 25566), (125, 25590), (127, 25605), (139, 25695),

Gene: Spooky_35 Start: 27760, Stop: 28698, Start Num: 17

Candidate Starts for Spooky_35:

(14, 27748), (Start: 17 @27760 has 15 MA's), (29, 27853), (38, 27925), (50, 27976), (58, 28054), (63, 28093), (67, 28132), (74, 28204), (78, 28216), (81, 28231), (82, 28237), (85, 28261), (90, 28297), (100, 28357), (103, 28375), (105, 28408), (109, 28435), (112, 28459), (113, 28462), (117, 28495), (118, 28501), (131, 28585), (134, 28621), (142, 28690),

Gene: Squiddly_37 Start: 28992, Stop: 29930, Start Num: 17

Candidate Starts for Squiddly_37:

(14, 28980), (Start: 17 @28992 has 15 MA's), (38, 29157), (50, 29208), (63, 29325), (74, 29436), (78, 29448), (81, 29463), (82, 29469), (83, 29478), (85, 29493), (90, 29529), (95, 29568), (100, 29589), (103, 29607), (105, 29640), (109, 29667), (112, 29691), (113, 29694), (114, 29697), (116, 29721), (118, 29733), (127, 29808), (129, 29814), (131, 29817), (139, 29901), (142, 29922),

Gene: Stank_56 Start: 38379, Stop: 39260, Start Num: 19

Candidate Starts for Stank_56:

(Start: 19 @38379 has 123 MA's), (Start: 21 @38391 has 1 MA's), (Start: 27 @38421 has 1 MA's), (32, 38478), (51, 38559), (52, 38583), (53, 38604), (55, 38616), (57, 38625), (62, 38664), (63, 38667), (66, 38694), (69, 38721), (72, 38733), (76, 38787), (83, 38823), (89, 38874), (96, 38922), (110, 39030), (116, 39069), (123, 39111), (128, 39150), (140, 39246), (141, 39252),

Gene: Stark_53 Start: 37634, Stop: 38515, Start Num: 19

Candidate Starts for Stark_53:

(Start: 19 @37634 has 123 MA's), (Start: 21 @37646 has 1 MA's), (Start: 27 @37676 has 1 MA's), (32, 37733), (51, 37814), (52, 37838), (53, 37859), (55, 37871), (57, 37880), (62, 37919), (63, 37922), (66, 37949), (69, 37976), (72, 37988), (76, 38042), (83, 38078), (89, 38129), (96, 38177), (110, 38285), (116, 38324), (123, 38366), (128, 38405), (140, 38501), (141, 38507),

Gene: StellaBean_50 Start: 37689, Stop: 38570, Start Num: 19

Candidate Starts for StellaBean_50:

(Start: 19 @37689 has 123 MA's), (Start: 21 @37701 has 1 MA's), (Start: 27 @37731 has 1 MA's), (32, 37788), (51, 37869), (52, 37893), (53, 37914), (55, 37926), (57, 37935), (62, 37974), (63, 37977), (66, 38004), (69, 38031), (72, 38043), (76, 38097), (83, 38133), (89, 38184), (96, 38232), (110, 38340), (116, 38379), (123, 38421), (128, 38460), (140, 38556), (141, 38562),

Gene: StolenFromERC_55 Start: 37863, Stop: 38744, Start Num: 19

Candidate Starts for StolenFromERC_55:

(Start: 19 @37863 has 123 MA's), (Start: 21 @37875 has 1 MA's), (Start: 27 @37905 has 1 MA's), (32, 37962), (51, 38043), (52, 38067), (53, 38088), (55, 38100), (57, 38109), (62, 38148), (63, 38151), (66, 38178), (69, 38205), (72, 38217), (76, 38271), (83, 38307), (89, 38358), (96, 38406), (110, 38514), (116, 38553), (123, 38595), (128, 38634), (140, 38730), (141, 38736),

Gene: StormChicken_54 Start: 38529, Stop: 39410, Start Num: 19

Candidate Starts for StormChicken_54:

(Start: 19 @38529 has 123 MA's), (Start: 21 @38541 has 1 MA's), (Start: 27 @38571 has 1 MA's), (32, 38628), (51, 38709), (52, 38733), (53, 38754), (55, 38766), (57, 38775), (62, 38814), (63, 38817), (66, 38844), (69, 38871), (72, 38883), (76, 38937), (83, 38973), (89, 39024), (96, 39072), (110, 39180), (116, 39219), (123, 39261), (128, 39300), (140, 39396), (141, 39402),

Gene: TBrady12_55 Start: 37863, Stop: 38744, Start Num: 19

Candidate Starts for TBrady12_55:

(Start: 19 @37863 has 123 MA's), (Start: 21 @37875 has 1 MA's), (Start: 27 @37905 has 1 MA's), (32, 37962), (51, 38043), (52, 38067), (53, 38088), (55, 38100), (57, 38109), (62, 38148), (63, 38151), (66, 38178), (69, 38205), (72, 38217), (76, 38271), (83, 38307), (89, 38358), (96, 38406), (110, 38514),

(116, 38553), (123, 38595), (128, 38634), (140, 38730), (141, 38736),

Gene: Tarkin_51 Start: 38111, Stop: 38992, Start Num: 19

Candidate Starts for Tarkin_51:

(Start: 19 @38111 has 123 MA's), (Start: 21 @38123 has 1 MA's), (Start: 27 @38153 has 1 MA's), (32, 38210), (51, 38291), (52, 38315), (53, 38336), (55, 38348), (57, 38357), (62, 38396), (63, 38399), (66, 38426), (69, 38453), (72, 38465), (76, 38519), (83, 38555), (89, 38606), (96, 38654), (110, 38762), (116, 38801), (123, 38843), (128, 38882), (140, 38978), (141, 38984),

Gene: TeardropMSU_48 Start: 37111, Stop: 37992, Start Num: 19

Candidate Starts for TeardropMSU_48:

(Start: 19 @37111 has 123 MA's), (Start: 21 @37123 has 1 MA's), (Start: 27 @37153 has 1 MA's), (32, 37210), (51, 37291), (52, 37315), (53, 37336), (55, 37348), (57, 37357), (62, 37396), (63, 37399), (66, 37426), (69, 37453), (72, 37465), (76, 37519), (83, 37555), (89, 37606), (96, 37654), (110, 37762), (116, 37801), (123, 37843), (128, 37882), (140, 37978), (141, 37984),

Gene: Teaspoon_53 Start: 38005, Stop: 38886, Start Num: 19

Candidate Starts for Teaspoon_53:

(Start: 19 @38005 has 123 MA's), (Start: 21 @38017 has 1 MA's), (Start: 27 @38047 has 1 MA's), (32, 38104), (51, 38185), (52, 38209), (53, 38230), (55, 38242), (57, 38251), (62, 38290), (63, 38293), (66, 38320), (69, 38347), (72, 38359), (76, 38413), (83, 38449), (89, 38500), (96, 38548), (110, 38656), (116, 38695), (123, 38737), (128, 38776), (140, 38872), (141, 38878),

Gene: Terminus_54 Start: 38602, Stop: 39483, Start Num: 19

Candidate Starts for Terminus_54:

(Start: 19 @38602 has 123 MA's), (Start: 21 @38614 has 1 MA's), (Start: 27 @38644 has 1 MA's), (32, 38701), (51, 38782), (52, 38806), (53, 38827), (55, 38839), (57, 38848), (62, 38887), (63, 38890), (66, 38917), (69, 38944), (72, 38956), (76, 39010), (83, 39046), (89, 39097), (96, 39145), (110, 39253), (116, 39292), (123, 39334), (128, 39373), (140, 39469), (141, 39475),

Gene: ThayneTheZag_36 Start: 24729, Stop: 25649, Start Num: 18

Candidate Starts for ThayneTheZag_36:

(Start: 18 @24729 has 60 MA's), (42, 24903), (45, 24915), (61, 25050), (64, 25062), (65, 25071), (70, 25110), (73, 25155), (77, 25176), (78, 25179), (79, 25185), (84, 25218), (90, 25260), (92, 25269), (109, 25395), (122, 25491), (125, 25515), (127, 25530),

Gene: Thimann_34 Start: 26659, Stop: 27576, Start Num: 18

Candidate Starts for Thimann_34:

(Start: 17 @26653 has 15 MA's), (Start: 18 @26659 has 60 MA's), (47, 26848), (49, 26854), (59, 26956), (63, 26980), (71, 27040), (76, 27097), (78, 27103), (79, 27109), (95, 27223), (96, 27229), (99, 27241), (109, 27316), (112, 27340), (113, 27343), (118, 27379), (119, 27385), (120, 27397), (134, 27499),

Gene: Thimble_54 Start: 37045, Stop: 37926, Start Num: 19

Candidate Starts for Thimble_54:

(Start: 19 @37045 has 123 MA's), (Start: 21 @37057 has 1 MA's), (Start: 27 @37087 has 1 MA's), (32, 37144), (51, 37225), (52, 37249), (53, 37270), (55, 37282), (57, 37291), (62, 37330), (63, 37333), (66, 37360), (69, 37387), (72, 37399), (76, 37453), (83, 37489), (89, 37540), (96, 37588), (110, 37696), (116, 37735), (123, 37777), (128, 37816), (140, 37912), (141, 37918),

Gene: Thresher_55 Start: 38988, Stop: 39869, Start Num: 19

Candidate Starts for Thresher_55:

(Start: 19 @38988 has 123 MA's), (Start: 21 @39000 has 1 MA's), (Start: 27 @39030 has 1 MA's), (32, 39087), (51, 39168), (52, 39192), (53, 39213), (55, 39225), (57, 39234), (62, 39273), (63, 39276), (66, 39303), (69, 39330), (72, 39342), (76, 39396), (83, 39432), (89, 39483), (96, 39531), (110, 39639), (116, 39678), (123, 39720), (128, 39759), (140, 39855), (141, 39861),

Gene: Tiff81_32 Start: 21991, Stop: 22911, Start Num: 18

Candidate Starts for Tiff81_32:

(5, 21862), (Start: 18 @21991 has 60 MA's), (31, 22105), (42, 22165), (45, 22177), (64, 22324), (70, 22372), (73, 22417), (78, 22441), (79, 22447), (93, 22534), (101, 22591), (109, 22657), (113, 22684), (125, 22777), (127, 22792), (139, 22882),

Gene: Tomaszewski_48 Start: 36996, Stop: 37865, Start Num: 21

Candidate Starts for Tomaszewski_48:

(Start: 19 @36984 has 123 MA's), (Start: 21 @36996 has 1 MA's), (Start: 27 @37026 has 1 MA's), (32, 37083), (51, 37164), (52, 37188), (53, 37209), (55, 37221), (57, 37230), (62, 37269), (63, 37272), (66, 37299), (69, 37326), (72, 37338), (76, 37392), (83, 37428), (89, 37479), (96, 37527), (110, 37635), (116, 37674), (123, 37716), (128, 37755), (140, 37851), (141, 37857),

Gene: Toto_51 Start: 38365, Stop: 39246, Start Num: 19

Candidate Starts for Toto_51:

(Start: 19 @38365 has 123 MA's), (Start: 21 @38377 has 1 MA's), (Start: 27 @38407 has 1 MA's), (32, 38464), (51, 38545), (52, 38569), (53, 38590), (55, 38602), (57, 38611), (62, 38650), (63, 38653), (66, 38680), (69, 38707), (72, 38719), (76, 38773), (83, 38809), (89, 38860), (96, 38908), (110, 39016), (116, 39055), (123, 39097), (128, 39136), (140, 39232), (141, 39238),

Gene: Traaww1_48 Start: 37546, Stop: 38427, Start Num: 19

Candidate Starts for Traaww1_48:

(Start: 19 @37546 has 123 MA's), (Start: 21 @37558 has 1 MA's), (Start: 27 @37588 has 1 MA's), (32, 37645), (51, 37726), (52, 37750), (53, 37771), (55, 37783), (57, 37792), (62, 37831), (63, 37834), (66, 37861), (69, 37888), (72, 37900), (76, 37954), (83, 37990), (89, 38041), (96, 38089), (110, 38197), (116, 38236), (123, 38278), (128, 38317), (140, 38413), (141, 38419),

Gene: Tuco_53 Start: 38873, Stop: 39754, Start Num: 19

Candidate Starts for Tuco_53:

(Start: 19 @38873 has 123 MA's), (Start: 21 @38885 has 1 MA's), (Start: 27 @38915 has 1 MA's), (32, 38972), (51, 39053), (52, 39077), (53, 39098), (55, 39110), (57, 39119), (62, 39158), (63, 39161), (66, 39188), (69, 39215), (72, 39227), (76, 39281), (83, 39317), (89, 39368), (96, 39416), (110, 39524), (116, 39563), (123, 39605), (128, 39644), (140, 39740), (141, 39746),

Gene: Twinkle_35 Start: 31824, Stop: 32741, Start Num: 18

Candidate Starts for Twinkle_35:

(Start: 17 @31818 has 15 MA's), (Start: 18 @31824 has 60 MA's), (45, 32004), (47, 32013), (49, 32019), (68, 32190), (71, 32205), (76, 32262), (78, 32268), (79, 32274), (82, 32289), (95, 32388), (96, 32394), (99, 32406), (109, 32481), (112, 32505), (113, 32508), (118, 32544), (119, 32550), (120, 32562), (134, 32664),

Gene: Ukulele_49 Start: 37259, Stop: 38140, Start Num: 19

Candidate Starts for Ukulele_49:

(Start: 19 @37259 has 123 MA's), (Start: 21 @37271 has 1 MA's), (Start: 27 @37301 has 1 MA's), (32, 37358), (51, 37439), (52, 37463), (53, 37484), (55, 37496), (57, 37505), (62, 37544), (63, 37547), (66, 37574), (69, 37601), (72, 37613), (76, 37667), (83, 37703), (89, 37754), (96, 37802), (110, 37910), (116, 37949), (123, 37991), (128, 38030), (140, 38126), (141, 38132),

Gene: Utz_31 Start: 28505, Stop: 29425, Start Num: 18

Candidate Starts for Utz_31:

(Start: 17 @28499 has 15 MA's), (Start: 18 @28505 has 60 MA's), (33, 28622), (34, 28625), (46, 28688), (47, 28694), (49, 28700), (59, 28802), (71, 28886), (75, 28940), (76, 28943), (78, 28949), (82, 28970), (95, 29069), (99, 29087), (109, 29162), (113, 29189), (118, 29225), (127, 29300),

Gene: Vopal_39 Start: 27391, Stop: 28311, Start Num: 18

Candidate Starts for Vopal_39:

(Start: 13 @27349 has 1 MA's), (Start: 18 @27391 has 60 MA's), (37, 27547), (42, 27565), (45, 27577), (64, 27724), (70, 27772), (73, 27817), (75, 27832), (78, 27841), (79, 27847), (82, 27862), (84, 27880), (90, 27922), (92, 27931), (97, 27973), (109, 28057), (113, 28084), (127, 28192), (139, 28282),

Gene: Wiggin_54 Start: 37947, Stop: 38828, Start Num: 19

Candidate Starts for Wiggin_54:

(Start: 19 @37947 has 123 MA's), (Start: 21 @37959 has 1 MA's), (Start: 27 @37989 has 1 MA's), (32, 38046), (51, 38127), (52, 38151), (53, 38172), (55, 38184), (57, 38193), (62, 38232), (63, 38235), (66, 38262), (69, 38289), (72, 38301), (76, 38355), (83, 38391), (89, 38442), (96, 38490), (110, 38598), (116, 38637), (123, 38679), (128, 38718), (140, 38814), (141, 38820),

Gene: Willez_46 Start: 35849, Stop: 36730, Start Num: 19

Candidate Starts for Willez_46:

(Start: 19 @35849 has 123 MA's), (Start: 21 @35861 has 1 MA's), (Start: 27 @35891 has 1 MA's), (32, 35948), (51, 36029), (52, 36053), (53, 36074), (55, 36086), (57, 36095), (62, 36134), (63, 36137), (66, 36164), (69, 36191), (72, 36203), (76, 36257), (83, 36293), (89, 36344), (96, 36392), (110, 36500), (116, 36539), (123, 36581), (128, 36620), (140, 36716), (141, 36722),

Gene: WinkNick_38 Start: 28007, Stop: 28924, Start Num: 18

Candidate Starts for WinkNick_38:

(Start: 17 @28001 has 15 MA's), (Start: 18 @28007 has 60 MA's), (47, 28196), (49, 28202), (59, 28304), (63, 28328), (71, 28388), (76, 28445), (78, 28451), (79, 28457), (95, 28571), (96, 28577), (99, 28589), (109, 28664), (112, 28688), (113, 28691), (118, 28727), (119, 28733), (120, 28745), (134, 28847),

Gene: Xandras_52 Start: 37358, Stop: 38239, Start Num: 19

Candidate Starts for Xandras_52:

(Start: 19 @37358 has 123 MA's), (Start: 21 @37370 has 1 MA's), (Start: 27 @37400 has 1 MA's), (32, 37457), (51, 37538), (52, 37562), (53, 37583), (55, 37595), (57, 37604), (62, 37643), (63, 37646), (66, 37673), (69, 37700), (72, 37712), (76, 37766), (83, 37802), (89, 37853), (96, 37901), (110, 38009), (116, 38048), (123, 38090), (128, 38129), (140, 38225), (141, 38231),

Gene: YassJohnny_48 Start: 37024, Stop: 37905, Start Num: 19

Candidate Starts for YassJohnny_48:

(Start: 19 @37024 has 123 MA's), (Start: 21 @37036 has 1 MA's), (Start: 27 @37066 has 1 MA's), (32, 37123), (51, 37204), (52, 37228), (53, 37249), (55, 37261), (57, 37270), (62, 37309), (63, 37312), (66, 37339), (69, 37366), (72, 37378), (76, 37432), (83, 37468), (89, 37519), (96, 37567), (110, 37675), (116, 37714), (123, 37756), (128, 37795), (140, 37891), (141, 37897),

Gene: YoungHarleezy_36 Start: 24585, Stop: 25502, Start Num: 18

Candidate Starts for YoungHarleezy_36:

(5, 24456), (8, 24462), (Start: 18 @24585 has 60 MA's), (37, 24741), (41, 24756), (45, 24768), (64, 24915), (65, 24924), (70, 24963), (73, 25008), (78, 25032), (79, 25038), (84, 25071), (90, 25113), (92, 25122), (97, 25164), (109, 25248), (125, 25368), (127, 25383),

Gene: Youngblood_54 Start: 38532, Stop: 39413, Start Num: 19

Candidate Starts for Youngblood_54:

(Start: 19 @38532 has 123 MA's), (Start: 21 @38544 has 1 MA's), (Start: 27 @38574 has 1 MA's), (32, 38631), (51, 38712), (52, 38736), (53, 38757), (55, 38769), (57, 38778), (62, 38817), (63, 38820), (66, 38847), (69, 38874), (72, 38886), (76, 38940), (83, 38976), (89, 39027), (96, 39075), (110, 39183), (116, 39222), (123, 39264), (128, 39303), (140, 39399), (141, 39405),

Gene: YungMoney_41 Start: 35216, Stop: 36133, Start Num: 18

Candidate Starts for YungMoney_41:

(Start: 17 @35210 has 15 MA's), (Start: 18 @35216 has 60 MA's), (33, 35333), (34, 35336), (46, 35399), (47, 35405), (49, 35411), (71, 35597), (75, 35651), (76, 35654), (78, 35660), (82, 35681), (95, 35780), (96, 35786), (99, 35798), (109, 35873), (113, 35900), (118, 35936), (122, 35972), (127, 36011), (139, 36104), (142, 36125),

Gene: Zaheer_36 Start: 26991, Stop: 27911, Start Num: 18

Candidate Starts for Zaheer_36:

(Start: 18 @26991 has 60 MA's), (37, 27147), (42, 27165), (45, 27177), (64, 27324), (65, 27333), (70, 27372), (75, 27432), (78, 27441), (79, 27447), (84, 27480), (90, 27522), (93, 27534), (96, 27567), (97, 27573), (99, 27579), (109, 27657), (122, 27753), (129, 27798), (138, 27879), (139, 27882),

Gene: Zucker_29 Start: 23884, Stop: 24804, Start Num: 18

Candidate Starts for Zucker_29:

(Start: 13 @23842 has 1 MA's), (Start: 18 @23884 has 60 MA's), (42, 24058), (45, 24070), (64, 24217), (65, 24226), (70, 24265), (78, 24334), (79, 24340), (80, 24343), (84, 24373), (90, 24415), (109, 24550), (122, 24646), (124, 24658), (125, 24670), (127, 24685), (129, 24691),

Gene: xkcd_56 Start: 38722, Stop: 39603, Start Num: 19

Candidate Starts for xkcd_56:

(Start: 19 @38722 has 123 MA's), (Start: 21 @38734 has 1 MA's), (Start: 27 @38764 has 1 MA's), (32, 38821), (51, 38902), (52, 38926), (53, 38947), (55, 38959), (57, 38968), (62, 39007), (63, 39010), (66, 39037), (69, 39064), (72, 39076), (76, 39130), (83, 39166), (89, 39217), (96, 39265), (110, 39373), (116, 39412), (123, 39454), (128, 39493), (140, 39589), (141, 39595),