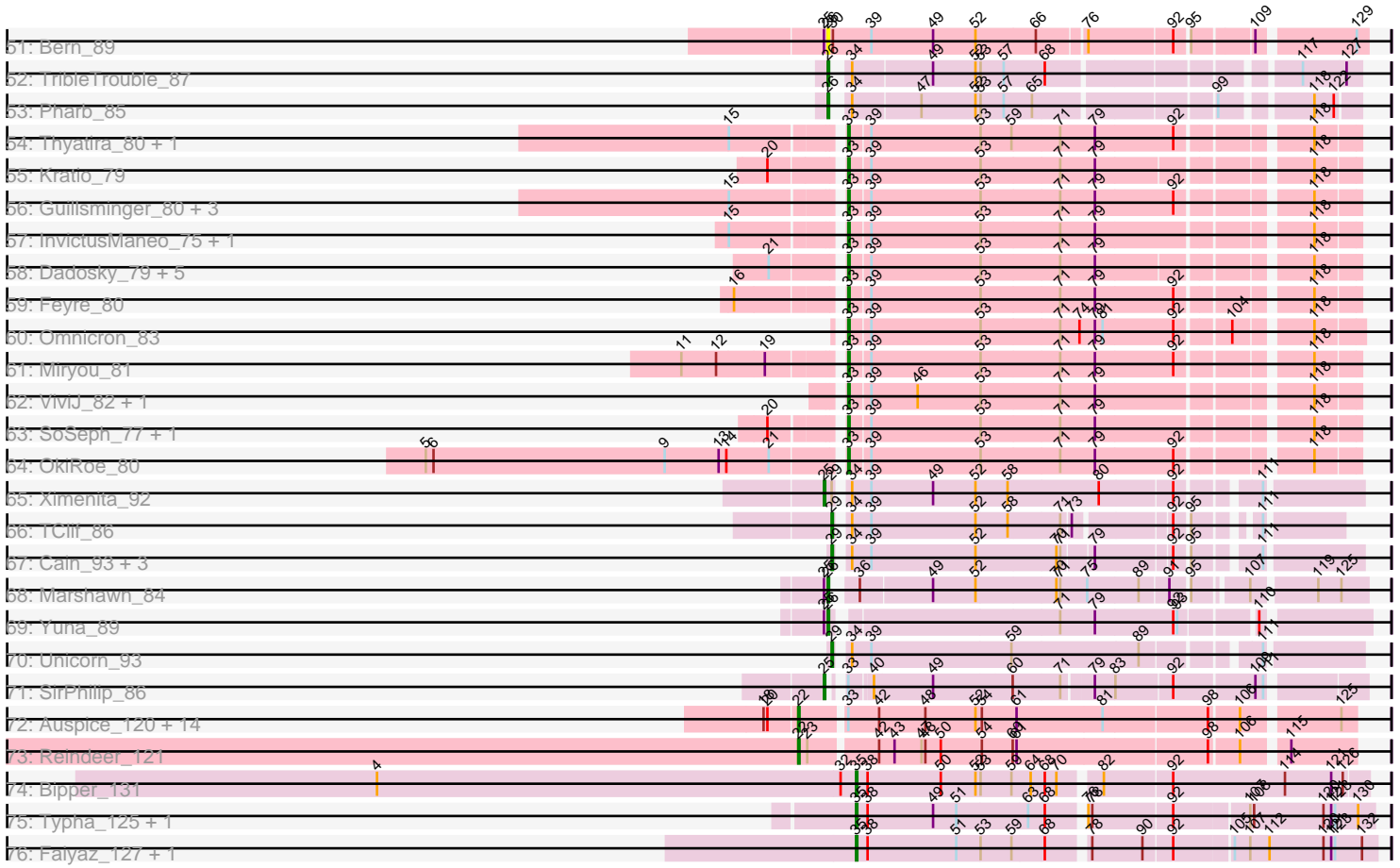


Pham 214028



Note: Tracks are now grouped by subcluster and scaled. Switching in subcluster is indicated by changes in track color. Track scale is now set by default to display the region 30 bp upstream of start 1 to 30 bp downstream of the last possible start. If this default region is judged to be packed too tightly with annotated starts, the track will be further scaled to only show that region of the ORF with annotated starts. This action will be indicated by adding "Zoomed" to the title. For starts, yellow indicates the location of called starts comprised solely of Glimmer/GeneMark auto-annotations, green indicates the location of called starts with at least 1 manual gene annotation.

Pham 214028 Report

This analysis was run 02/22/25 on database version 588.

Pham number 214028 has 171 members, 19 are drafts.

Phages represented in each track:

- Track 1 : Settecandela_162, Phrappuccino_162
- Track 2 : Porky_117, MadamMonkfish_117, Dumbo_118
- Track 3 : ChosenOne_118, Elite2014_117, Lilpickle_117, Becksu_116, FoghornLeghorn_115
- Track 4 : Nibb_88
- Track 5 : HedwigODU_86, Dalmuri_86, Adephagia_85, Spock_86, JAWS_85, Tachez_86, CREW_85, BaghaKamala_85, Joy99_87, Inky_86
- Track 6 : Ganymede_86, Beezoo_89, YoureAdopted_85, Zavala_88
- Track 7 : ShiaSurprise_87, BEEST_86, Lunahalos_86, Twitch_86, Capricorn_86, Durfee_86, Homura_85, Peel_86, Topper_86, Rosmarinus_86, ActinUp_87, Blizzard_86, Hyperbowlee_85, CaseJules_88, Jarvi_86, Jeckyll_86, Piatt_85, Padfoot_86, Llorens_86, Asayake_86, Boiii_86, Zabiza_82, Belladonna_86, Atiba_87, Veliki_87
- Track 8 : Pokerus_86
- Track 9 : AlishaPH_79, BGIlluviae_85
- Track 10 : Ageofdapage_90
- Track 11 : Oscar_88, KiSi_88, LeMond_87
- Track 12 : MacKat_83
- Track 13 : LindNT_84
- Track 14 : Padpat_89, Emerson_88
- Track 15 : MeaningOfLife_88
- Track 16 : SamuelLPlaqson_86, DrHayes_86, Urkel_86
- Track 17 : CallaLilly_87
- Track 18 : Curiosium_94
- Track 19 : Shaobing_86, Niklas_87, Peanam_87
- Track 20 : Anaya_89, TaiwanKao_87, Tiri_86
- Track 21 : TreyKay_88, Prithvi_88
- Track 22 : Yunkel11_91
- Track 23 : Clipper_93
- Track 24 : Angelica_83
- Track 25 : QuincyRose_84
- Track 26 : Deby_86
- Track 27 : Stinson_87
- Track 28 : LastHope_92
- Track 29 : MarkPhew_88
- Track 30 : Sulley_83, Ramen_87, Jayhawk_88, Rapunzel97_88, BarrelRoll_86, TruffulaTree_88, Slimphazie_88

- Track 31 : McMater_86, Richo_86, Dartin_86
- Track 32 : Chavito_86
- Track 33 : CrimD_86
- Track 34 : Devera_92, Illumine_90
- Track 35 : Guanica15_92, Efra2_93
- Track 36 : TiniBug_85
- Track 37 : Geraldini_88
- Track 38 : Dole_89
- Track 39 : Bella96_87
- Track 40 : Megsy_90
- Track 41 : LaterM_86
- Track 42 : Validus_92
- Track 43 : Apocalypse_88
- Track 44 : Mynx_87
- Track 45 : TingHuaYa_90
- Track 46 : Adonis_86
- Track 47 : Chris_87
- Track 48 : Scarlett_87
- Track 49 : CheetoDust_86
- Track 50 : Murucutumbu_86
- Track 51 : Bern_89
- Track 52 : TribbleTrouble_87
- Track 53 : Pharb_85
- Track 54 : Thyatira_80, Waterfoul_79
- Track 55 : Kratio_79
- Track 56 : Guillsminger_80, Leston_79, Gengar_79, Paola_79
- Track 57 : InvictusManeo_75, Agent47_77
- Track 58 : Dadosky_79, Psycho_77, AlleyCat_79, Edugator_75, Larva_78, Neighly_79
- Track 59 : Feyre_80
- Track 60 : Omnicron_83
- Track 61 : Miryou_81
- Track 62 : ViviJ_82, Collard_75
- Track 63 : SoSeph_77, Heftyboy_77
- Track 64 : OkiRoe_80
- Track 65 : Ximenita_92
- Track 66 : TClif_86
- Track 67 : Cain_93, Bryler_85, Phrank_93, Tierra_93
- Track 68 : Marshawn_84
- Track 69 : Yuna_89
- Track 70 : Unicorn_93
- Track 71 : SirPhilip_86
- Track 72 : Auspice_120, Dulcita_121, Skinny_126, IPhane7_118, FreakyGoo_120, Izel_119, PegLeg_124, Bricole_122, Diminimus_121, Glaske16_123, TyDawg_115, KleverKiS_123, LilhomieP_120, Bongo_120, SlimJimmy_120
- Track 73 : Reindeer_121
- Track 74 : Bipper_131
- Track 75 : Typha_125, AuntGwenStacy_128
- Track 76 : Faiyaz_127, Hilltopfarm_130

Summary of Final Annotations (See graph section above for start numbers):

The start number called the most often in the published annotations is 26, it was called in 77 of the 152 non-draft genes in the pham.

Genes that call this "Most Annotated" start:

- ActinUp_87, Adonis_86, Ageofdapage_90, AlishaPH_79, Anaya_89, Apocalypse_88, Asayake_86, Atiba_87, BEEST_86, BGlluviae_85, BarrelRoll_86, Beezoo_89, Bella96_87, Belladonna_86, Bern_89, Blizzard_86, Boiiii_86, CallaLilly_87, Capricorn_86, CaseJules_88, CheetoDust_86, Chris_87, Curiosium_94, Deby_86, Devera_92, DrHayes_86, Durfee_86, Emerson_88, Ganymede_86, Homura_85, Hyperbowlee_85, Illumine_90, Jarvi_86, Jayhawk_88, Jeckyll_86, KiSi_88, LastHope_92, LaterM_86, LeMond_87, Llorens_86, Lunahalos_86, MacKat_83, MarkPheW_88, Marshawn_84, MeaningOfLife_88, Megsy_90, Nibb_88, Oscar_88, Padfoot_86, Padpat_89, Peel_86, Pharb_85, Phrappuccino_162, Piatt_85, Pokerus_86, Prithvi_88, Ramen_87, Rapunzel97_88, Rosmarinus_86, SamuelLPlaqson_86, Scarlett_87, Settecandela_162, ShiaSurprise_87, Slimphazie_88, Stinson_87, Sulley_83, TaiwanKao_87, TingHuaYa_90, TiniBug_85, Tiri_86, Topper_86, TreyKay_88, TripleTrouble_87, TruffulaTree_88, Twitch_86, Urkel_86, Veliki_87, YoureAdopted_85, Yuna_89, Yunkel11_91, Zabiza_82, Zavala_88,

Genes that have the "Most Annotated" start but do not call it:

- Adephagia_85, Angelica_83, BaghaKamala_85, CREW_85, Clipper_93, CrimD_86, Dalmuri_86, Dole_89, Geraldini_88, HedwigODU_86, Inky_86, JAWS_85, Joy99_87, LindNT_84, Murucutumbu_86, Mynx_87, QuincyRose_84, Spock_86, Tachez_86,

Genes that do not have the "Most Annotated" start:

- Agent47_77, AlleyCat_79, AuntGwenStacy_128, Auspice_120, Becksu_116, Bipper_131, Bongo_120, Bricole_122, Bryler_85, Cain_93, Chavito_86, ChosenOne_118, Collard_75, Dadosky_79, Dartin_86, Diminimus_121, Dulcita_121, Dumbo_118, Edugator_75, Efra2_93, Elite2014_117, Faiyaz_127, Feyre_80, FoghornLeghorn_115, FreakyGoo_120, Gengar_79, Glaske16_123, Guanica15_92, Guillsminger_80, Heftyboy_77, Hilltopfarm_130, IPhone7_118, InvictusManeo_75, Izel_119, KleverKiS_123, Kratio_79, Larva_78, Leston_79, LilhomieP_120, Lilpickle_117, MadamMonkfish_117, McMater_86, Miryou_81, Neighly_79, Niklas_87, OkiRoe_80, Omnicron_83, Paola_79, Peanam_87, PegLeg_124, Phrank_93, Porky_117, Psycho_77, Reindeer_121, Richo_86, Shaobing_86, SirPhilip_86, Skinny_126, SlimJimmy_120, SoSeph_77, TClif_86, Thyatira_80, Tierra_93, TyDawg_115, Typha_125, Unicorn_93, Validus_92, ViviJ_82, Waterfoul_79, Ximenita_92,

Summary by start number:

Start 22:

- Found in 16 of 171 (9.4%) of genes in pham
- Manual Annotations of this start: 13 of 152
- Called 100.0% of time when present
- Phage (with cluster) where this start called: Auspice_120 (M1), Bongo_120 (M1), Bricole_122 (M1), Diminimus_121 (M1), Dulcita_121 (M1), FreakyGoo_120 (M1), Glaske16_123 (M1), IPhone7_118 (M1), Izel_119 (M1), KleverKiS_123 (M1), LilhomieP_120 (M1), PegLeg_124 (M1), Reindeer_121 (M1), Skinny_126 (M1), SlimJimmy_120 (M1), TyDawg_115 (M1),

Start 25:

- Found in 105 of 171 (61.4%) of genes in pham
- Manual Annotations of this start: 20 of 152
- Called 22.9% of time when present
- Phage (with cluster) where this start called: Adephagia_85 (K1), Angelica_83 (K1), BaghaKamala_85 (K1), CREW_85 (K1), Clipper_93 (K1), CrimD_86 (K1), Dalmuri_86 (K1), Dartin_86 (K1), Dole_89 (K1), Geraldini_88 (K1), HedwigODU_86 (K1), Inky_86 (K1), JAWS_85 (K1), Joy99_87 (K1), LindNT_84 (K1), McMater_86 (K1), Murucutumbu_86 (K1), Mynx_87 (K1), QuincyRose_84 (K1), Richo_86 (K1), SirPhilip_86 (K6), Spock_86 (K1), Tachez_86 (K1), Ximenita_92 (K6),

Start 26:

- Found in 101 of 171 (59.1%) of genes in pham
- Manual Annotations of this start: 77 of 152
- Called 81.2% of time when present
- Phage (with cluster) where this start called: ActinUp_87 (K1), Adonis_86 (K1), Ageofdapage_90 (K1), AlishaPH_79 (K1), Anaya_89 (K1), Apocalypse_88 (K1), Asayake_86 (K1), Atiba_87 (K1), BEEST_86 (K1), BGIlluviae_85 (K1), BarrelRoll_86 (K1), Beezoo_89 (K1), Bella96_87 (K1), Belladonna_86 (K1), Bern_89 (K1), Blizzard_86 (K1), Boiiii_86 (K1), CallaLilly_87 (K1), Capricorn_86 (K1), CaseJules_88 (K1), CheetoDust_86 (K1), Chris_87 (K1), Curiosium_94 (K1), Deby_86 (K1), Devera_92 (K1), DrHayes_86 (K1), Durfee_86 (K1), Emerson_88 (K1), Ganymede_86 (K1), Homura_85 (K1), Hyperbowlee_85 (K1), Illumine_90 (K1), Jarvi_86 (K1), Jayhawk_88 (K1), Jeckyll_86 (K1), KiSi_88 (K1), LastHope_92 (K1), LaterM_86 (K1), LeMond_87 (K1), Llorens_86 (K1), Lunahalos_86 (K1), MacKat_83 (K1), MarkPheW_88 (K1), Marshawn_84 (K6), MeaningOfLife_88 (K1), Megsy_90 (K1), Nibb_88 (K1), Oscar_88 (K1), Padfoot_86 (K1), Padpat_89 (K1), Peel_86 (K1), Pharb_85 (K3), Phrappuccino_162 (AA), Piatt_85 (K1), Pokerus_86 (K1), Prithvi_88 (K1), Ramen_87 (K1), Rapunzel97_88 (K1), Rosmarinus_86 (K1), SamuelLPlaqson_86 (K1), Scarlett_87 (K1), Settecandela_162 (AA), ShiaSurprise_87 (K1), Slimphazie_88 (K1), Stinson_87 (K1), Sulley_83 (K1), TaiwanKao_87 (K1), TingHuaYa_90 (K1), TiniBug_85 (K1), Tiri_86 (K1), Topper_86 (K1), TreyKay_88 (K1), TribbleTrouble_87 (K3), TruffulaTree_88 (K1), Twitch_86 (K1), Urkel_86 (K1), Veliki_87 (K1), YoureAdopted_85 (K1), Yuna_89 (K6), Yunkel11_91 (K1), Zabiza_82 (K1), Zavala_88 (K1),

Start 28:

- Found in 1 of 171 (0.6%) of genes in pham
- Manual Annotations of this start: 1 of 152
- Called 100.0% of time when present
- Phage (with cluster) where this start called: Validus_92 (K1),

Start 29:

- Found in 14 of 171 (8.2%) of genes in pham
- Manual Annotations of this start: 9 of 152
- Called 71.4% of time when present
- Phage (with cluster) where this start called: Bryler_85 (K6), Cain_93 (K6), Chavito_86 (K1), Niklas_87 (K1), Peanam_87 (K1), Phrank_93 (K6), Shaobing_86 (K1), TClif_86 (K6), Tierra_93 (K6), Unicorn_93 (K6),

Start 30:

- Found in 67 of 171 (39.2%) of genes in pham
- Manual Annotations of this start: 2 of 152

- Called 3.0% of time when present
- Phage (with cluster) where this start called: Efra2_93 (K1), Guanica15_92 (K1),

Start 31:

- Found in 8 of 171 (4.7%) of genes in pham
- Manual Annotations of this start: 3 of 152
- Called 37.5% of time when present
- Phage (with cluster) where this start called: Dumbo_118 (E), MadamMonkfish_117 (E), Porky_117 (E),

Start 33:

- Found in 39 of 171 (22.8%) of genes in pham
- Manual Annotations of this start: 21 of 152
- Called 59.0% of time when present
- Phage (with cluster) where this start called: Agent47_77 (K5), AlleyCat_79 (K5), Collard_75 (K5), Dadosky_79 (K5), Edugator_75 (K5), Feyre_80 (K5), Gengar_79 (K5), Guillsminger_80 (K5), Heftyboy_77 (K5), InvictusManeo_75 (K5), Kratio_79 (K5), Larva_78 (K5), Leston_79 (K5), Miryou_81 (K5), Neighly_79 (K3), OkiRoe_80 (K5), Omnicron_83 (K5), Paola_79 (K5), Psycho_77 (K5), SoSeph_77 (K5), Thyatira_80 (K5), ViviJ_82 (K5), Waterfoul_79 (K5),

Start 35:

- Found in 5 of 171 (2.9%) of genes in pham
- Manual Annotations of this start: 3 of 152
- Called 100.0% of time when present
- Phage (with cluster) where this start called: AuntGwenStacy_128 (Y), Bipper_131 (Y), Faiyaz_127 (Y), Hilltopfarm_130 (Y), Typha_125 (Y),

Start 44:

- Found in 8 of 171 (4.7%) of genes in pham
- Manual Annotations of this start: 3 of 152
- Called 62.5% of time when present
- Phage (with cluster) where this start called: Becksu_116 (E), ChosenOne_118 (E), Elite2014_117 (E), FoghornLeghorn_115 (E), Lilpickle_117 (E),

Summary by clusters:

There are 8 clusters represented in this pham: AA, E, K3, K1, M1, K6, K5, Y,

Info for manual annotations of cluster AA:

- Start number 26 was manually annotated 2 times for cluster AA.

Info for manual annotations of cluster E:

- Start number 31 was manually annotated 3 times for cluster E.
- Start number 44 was manually annotated 3 times for cluster E.

Info for manual annotations of cluster K1:

- Start number 25 was manually annotated 18 times for cluster K1.
- Start number 26 was manually annotated 71 times for cluster K1.
- Start number 28 was manually annotated 1 time for cluster K1.
- Start number 29 was manually annotated 3 times for cluster K1.
- Start number 30 was manually annotated 2 times for cluster K1.

Info for manual annotations of cluster K3:

- Start number 26 was manually annotated 2 times for cluster K3.

Info for manual annotations of cluster K5:

- Start number 33 was manually annotated 21 times for cluster K5.

Info for manual annotations of cluster K6:

- Start number 25 was manually annotated 2 times for cluster K6.
- Start number 26 was manually annotated 2 times for cluster K6.
- Start number 29 was manually annotated 6 times for cluster K6.

Info for manual annotations of cluster M1:

- Start number 22 was manually annotated 13 times for cluster M1.

Info for manual annotations of cluster Y:

- Start number 35 was manually annotated 3 times for cluster Y.

Gene Information:

Gene: ActinUp_87 Start: 55176, Stop: 55559, Start Num: 26

Candidate Starts for ActinUp_87:

(Start: 25 @55173 has 20 MA's), (Start: 26 @55176 has 77 MA's), (Start: 30 @55179 has 2 MA's), (37, 55203), (39, 55209), (52, 55290), (53, 55293), (67, 55338), (76, 55368), (92, 55431), (109, 55482), (128, 55545), (129, 55551),

Gene: Adephagia_85 Start: 55016, Stop: 55402, Start Num: 25

Candidate Starts for Adephagia_85:

(Start: 25 @55016 has 20 MA's), (Start: 26 @55019 has 77 MA's), (Start: 30 @55022 has 2 MA's), (37, 55046), (39, 55052), (52, 55133), (53, 55136), (67, 55181), (76, 55211), (92, 55274), (109, 55325), (128, 55388), (129, 55394),

Gene: Adonis_86 Start: 55208, Stop: 55591, Start Num: 26

Candidate Starts for Adonis_86:

(1, 54602), (2, 54695), (3, 54764), (4, 54860), (8, 54974), (10, 55091), (Start: 25 @55205 has 20 MA's), (Start: 26 @55208 has 77 MA's), (Start: 30 @55211 has 2 MA's), (37, 55235), (39, 55241), (52, 55322), (53, 55325), (67, 55370), (76, 55400), (92, 55463), (109, 55514), (128, 55577), (129, 55583),

Gene: Agent47_77 Start: 51159, Stop: 51524, Start Num: 33

Candidate Starts for Agent47_77:

(15, 51084), (Start: 33 @51159 has 21 MA's), (39, 51174), (53, 51258), (71, 51318), (79, 51345), (118, 51492),

Gene: Ageofdapage_90 Start: 55958, Stop: 56356, Start Num: 26

Candidate Starts for Ageofdapage_90:

(Start: 25 @55955 has 20 MA's), (Start: 26 @55958 has 77 MA's), (41, 55979), (49, 56024), (52, 56057), (53, 56060), (77, 56132), (89, 56168), (100, 56225), (113, 56264), (119, 56300), (124, 56315), (134, 56342),

Gene: AlishaPH_79 Start: 52396, Stop: 52788, Start Num: 26

Candidate Starts for AlishaPH_79:

(8, 52162), (10, 52279), (Start: 25 @52393 has 20 MA's), (Start: 26 @52396 has 77 MA's), (41, 52417), (49, 52462), (52, 52495), (53, 52498), (67, 52543), (70, 52555), (77, 52570), (79, 52573), (89, 52606), (100, 52663), (113, 52702), (119, 52738), (124, 52753),

Gene: AlleyCat_79 Start: 52246, Stop: 52608, Start Num: 33

Candidate Starts for AlleyCat_79:

(21, 52198), (Start: 33 @52246 has 21 MA's), (39, 52261), (53, 52345), (71, 52405), (79, 52432), (118, 52576),

Gene: Anaya_89 Start: 56222, Stop: 56620, Start Num: 26

Candidate Starts for Anaya_89:

(8, 55988), (10, 56105), (Start: 25 @56219 has 20 MA's), (Start: 26 @56222 has 77 MA's), (41, 56243), (49, 56288), (52, 56321), (53, 56324), (77, 56396), (89, 56432), (100, 56489), (113, 56528), (119, 56564), (124, 56579), (134, 56606),

Gene: Angelica_83 Start: 54442, Stop: 54828, Start Num: 25

Candidate Starts for Angelica_83:

(Start: 25 @54442 has 20 MA's), (Start: 26 @54445 has 77 MA's), (37, 54472), (39, 54478), (41, 54481), (52, 54559), (53, 54562), (67, 54607), (76, 54637), (92, 54700), (109, 54751), (128, 54814), (129, 54820),

Gene: Apocalypse_88 Start: 55385, Stop: 55750, Start Num: 26

Candidate Starts for Apocalypse_88:

(8, 55151), (10, 55268), (Start: 25 @55382 has 20 MA's), (Start: 26 @55385 has 77 MA's), (41, 55406), (45, 55430), (49, 55451), (52, 55484), (53, 55487), (67, 55532), (70, 55544), (77, 55559), (79, 55562), (89, 55595), (94, 55628), (100, 55652), (113, 55691), (119, 55727), (124, 55742),

Gene: Asayake_86 Start: 55334, Stop: 55717, Start Num: 26

Candidate Starts for Asayake_86:

(Start: 25 @55331 has 20 MA's), (Start: 26 @55334 has 77 MA's), (Start: 30 @55337 has 2 MA's), (37, 55361), (39, 55367), (52, 55448), (53, 55451), (67, 55496), (76, 55526), (92, 55589), (109, 55640), (128, 55703), (129, 55709),

Gene: Atiba_87 Start: 54982, Stop: 55365, Start Num: 26

Candidate Starts for Atiba_87:

(Start: 25 @54979 has 20 MA's), (Start: 26 @54982 has 77 MA's), (Start: 30 @54985 has 2 MA's), (37, 55009), (39, 55015), (52, 55096), (53, 55099), (67, 55144), (76, 55174), (92, 55237), (109, 55288), (128, 55351), (129, 55357),

Gene: AuntGwenStacy_128 Start: 73208, Stop: 73588, Start Num: 35

Candidate Starts for AuntGwenStacy_128:

(Start: 35 @73208 has 3 MA's), (38, 73217), (49, 73268), (51, 73286), (63, 73340), (68, 73352), (76, 73376), (78, 73379), (92, 73439), (107, 73493), (108, 73496), (120, 73550), (121, 73556), (123, 73559), (130, 73577),

Gene: Auspice_120 Start: 63814, Stop: 64218, Start Num: 22

Candidate Starts for Auspice_120:

(18, 63790), (20, 63793), (Start: 22 @63814 has 13 MA's), (Start: 33 @63844 has 21 MA's), (42, 63868), (48, 63904), (52, 63943), (54, 63946), (61, 63973), (81, 64039), (98, 64117), (106, 64138), (125, 64207),

Gene: BEEST_86 Start: 55334, Stop: 55717, Start Num: 26

Candidate Starts for BEEST_86:

(Start: 25 @55331 has 20 MA's), (Start: 26 @55334 has 77 MA's), (Start: 30 @55337 has 2 MA's), (37, 55361), (39, 55367), (52, 55448), (53, 55451), (67, 55496), (76, 55526), (92, 55589), (109, 55640), (128, 55703), (129, 55709),

Gene: BGlluviae_85 Start: 54705, Stop: 55097, Start Num: 26

Candidate Starts for BGlluviae_85:

(8, 54471), (10, 54588), (Start: 25 @54702 has 20 MA's), (Start: 26 @54705 has 77 MA's), (41, 54726), (49, 54771), (52, 54804), (53, 54807), (67, 54852), (70, 54864), (77, 54879), (79, 54882), (89, 54915), (100, 54972), (113, 55011), (119, 55047), (124, 55062),

Gene: BaghaKamala_85 Start: 54559, Stop: 54945, Start Num: 25

Candidate Starts for BaghaKamala_85:

(Start: 25 @54559 has 20 MA's), (Start: 26 @54562 has 77 MA's), (Start: 30 @54565 has 2 MA's), (37, 54589), (39, 54595), (52, 54676), (53, 54679), (67, 54724), (76, 54754), (92, 54817), (109, 54868), (128, 54931), (129, 54937),

Gene: BarrelRoll_86 Start: 55102, Stop: 55476, Start Num: 26

Candidate Starts for BarrelRoll_86:

(8, 54868), (10, 54985), (Start: 25 @55099 has 20 MA's), (Start: 26 @55102 has 77 MA's), (Start: 30 @55105 has 2 MA's), (39, 55132), (47, 55171), (49, 55180), (57, 55234), (62, 55246), (71, 55276), (87, 55324), (92, 55354), (94, 55363), (96, 55372), (106, 55399), (109, 55408), (122, 55459),

Gene: Becksu_116 Start: 66823, Stop: 67122, Start Num: 44

Candidate Starts for Becksu_116:

(24, 66763), (Start: 31 @66781 has 3 MA's), (Start: 44 @66823 has 3 MA's), (48, 66844), (71, 66943), (80, 66973), (85, 66988), (109, 67075), (111, 67081), (116, 67099),

Gene: Beezoo_89 Start: 55917, Stop: 56297, Start Num: 26

Candidate Starts for Beezoo_89:

(Start: 25 @55914 has 20 MA's), (Start: 26 @55917 has 77 MA's), (Start: 30 @55920 has 2 MA's), (37, 55944), (52, 56031), (53, 56034), (79, 56112), (92, 56172), (109, 56220), (128, 56283), (129, 56289),

Gene: Bella96_87 Start: 55512, Stop: 55904, Start Num: 26

Candidate Starts for Bella96_87:

(Start: 25 @55509 has 20 MA's), (Start: 26 @55512 has 77 MA's), (41, 55533), (49, 55578), (52, 55611), (53, 55614), (72, 55680), (77, 55686), (89, 55722), (100, 55779), (113, 55818), (119, 55854), (124, 55869), (133, 55887), (135, 55896),

Gene: Belladonna_86 Start: 55137, Stop: 55520, Start Num: 26

Candidate Starts for Belladonna_86:

(Start: 25 @55134 has 20 MA's), (Start: 26 @55137 has 77 MA's), (Start: 30 @55140 has 2 MA's), (37, 55164), (39, 55170), (52, 55251), (53, 55254), (67, 55299), (76, 55329), (92, 55392), (109, 55443), (128, 55506), (129, 55512),

Gene: Bern_89 Start: 53628, Stop: 54011, Start Num: 26

Candidate Starts for Bern_89:

(Start: 25 @53625 has 20 MA's), (Start: 26 @53628 has 77 MA's), (Start: 30 @53631 has 2 MA's), (39, 53661), (49, 53709), (52, 53742), (66, 53787), (76, 53820), (92, 53883), (95, 53892), (109, 53934), (129, 54003),

Gene: Bipper_131 Start: 74914, Stop: 75294, Start Num: 35

Candidate Starts for Bipper_131:

(4, 74542), (32, 74902), (Start: 35 @74914 has 3 MA's), (38, 74923), (50, 74980), (52, 75007), (53, 75010), (59, 75034), (64, 75049), (68, 75058), (70, 75067), (82, 75094), (92, 75145), (114, 75232), (121, 75268), (126, 75277),

Gene: Blizzard_86 Start: 55334, Stop: 55717, Start Num: 26

Candidate Starts for Blizzard_86:

(Start: 25 @55331 has 20 MA's), (Start: 26 @55334 has 77 MA's), (Start: 30 @55337 has 2 MA's), (37, 55361), (39, 55367), (52, 55448), (53, 55451), (67, 55496), (76, 55526), (92, 55589), (109, 55640), (128, 55703), (129, 55709),

Gene: Boiiii_86 Start: 55336, Stop: 55719, Start Num: 26

Candidate Starts for Boiiii_86:

(Start: 25 @55333 has 20 MA's), (Start: 26 @55336 has 77 MA's), (Start: 30 @55339 has 2 MA's), (37, 55363), (39, 55369), (52, 55450), (53, 55453), (67, 55498), (76, 55528), (92, 55591), (109, 55642), (128, 55705), (129, 55711),

Gene: Bongo_120 Start: 63430, Stop: 63834, Start Num: 22

Candidate Starts for Bongo_120:

(18, 63406), (20, 63409), (Start: 22 @63430 has 13 MA's), (Start: 33 @63460 has 21 MA's), (42, 63484), (48, 63520), (52, 63559), (54, 63562), (61, 63589), (81, 63655), (98, 63733), (106, 63754), (125, 63823),

Gene: Bricole_122 Start: 63578, Stop: 63982, Start Num: 22

Candidate Starts for Bricole_122:

(18, 63554), (20, 63557), (Start: 22 @63578 has 13 MA's), (Start: 33 @63608 has 21 MA's), (42, 63632), (48, 63668), (52, 63707), (54, 63710), (61, 63737), (81, 63803), (98, 63881), (106, 63902), (125, 63971),

Gene: Bryler_85 Start: 53090, Stop: 53452, Start Num: 29

Candidate Starts for Bryler_85:

(Start: 29 @53090 has 9 MA's), (34, 53096), (39, 53111), (52, 53192), (70, 53252), (71, 53255), (79, 53276), (92, 53330), (95, 53339), (111, 53381),

Gene: CREW_85 Start: 55134, Stop: 55520, Start Num: 25

Candidate Starts for CREW_85:

(Start: 25 @55134 has 20 MA's), (Start: 26 @55137 has 77 MA's), (Start: 30 @55140 has 2 MA's), (37, 55164), (39, 55170), (52, 55251), (53, 55254), (67, 55299), (76, 55329), (92, 55392), (109, 55443), (128, 55506), (129, 55512),

Gene: Cain_93 Start: 56237, Stop: 56599, Start Num: 29

Candidate Starts for Cain_93:

(Start: 29 @56237 has 9 MA's), (34, 56243), (39, 56258), (52, 56339), (70, 56399), (71, 56402), (79, 56423), (92, 56477), (95, 56486), (111, 56528),

Gene: CallaLilly_87 Start: 55060, Stop: 55443, Start Num: 26

Candidate Starts for CallaLilly_87:

(Start: 25 @55057 has 20 MA's), (Start: 26 @55060 has 77 MA's), (Start: 30 @55063 has 2 MA's), (39, 55093), (52, 55174), (53, 55177), (67, 55222), (76, 55252), (92, 55315), (109, 55366), (128, 55429), (129, 55435),

Gene: Capricorn_86 Start: 55137, Stop: 55520, Start Num: 26

Candidate Starts for Capricorn_86:

(Start: 25 @55134 has 20 MA's), (Start: 26 @55137 has 77 MA's), (Start: 30 @55140 has 2 MA's), (37, 55164), (39, 55170), (52, 55251), (53, 55254), (67, 55299), (76, 55329), (92, 55392), (109, 55443), (128, 55506), (129, 55512),

Gene: CaseJules_88 Start: 55334, Stop: 55717, Start Num: 26

Candidate Starts for CaseJules_88:

(Start: 25 @55331 has 20 MA's), (Start: 26 @55334 has 77 MA's), (Start: 30 @55337 has 2 MA's), (37, 55361), (39, 55367), (52, 55448), (53, 55451), (67, 55496), (76, 55526), (92, 55589), (109, 55640), (128, 55703), (129, 55709),

Gene: Chavito_86 Start: 56405, Stop: 56767, Start Num: 29

Candidate Starts for Chavito_86:

(Start: 25 @56399 has 20 MA's), (Start: 29 @56405 has 9 MA's), (39, 56426), (49, 56471), (52, 56504), (69, 56558), (103, 56681), (111, 56705),

Gene: CheetoDust_86 Start: 54523, Stop: 54906, Start Num: 26

Candidate Starts for CheetoDust_86:

(8, 54289), (10, 54406), (Start: 25 @54520 has 20 MA's), (Start: 26 @54523 has 77 MA's), (Start: 30 @54526 has 2 MA's), (37, 54550), (39, 54556), (52, 54637), (53, 54640), (67, 54685), (76, 54715), (92, 54778), (109, 54829), (128, 54892), (129, 54898),

Gene: ChosenOne_118 Start: 66075, Stop: 66374, Start Num: 44

Candidate Starts for ChosenOne_118:

(24, 66015), (Start: 31 @66033 has 3 MA's), (Start: 44 @66075 has 3 MA's), (48, 66096), (71, 66195), (80, 66225), (85, 66240), (109, 66327), (111, 66333), (116, 66351),

Gene: Chris_87 Start: 55450, Stop: 55815, Start Num: 26

Candidate Starts for Chris_87:

(Start: 25 @55447 has 20 MA's), (Start: 26 @55450 has 77 MA's), (37, 55465), (45, 55498), (52, 55552), (53, 55555), (56, 55561), (67, 55600), (68, 55603), (86, 55660), (89, 55669), (92, 55693), (110, 55744), (119, 55777), (125, 55795),

Gene: Clipper_93 Start: 55895, Stop: 56263, Start Num: 25

Candidate Starts for Clipper_93:

(10, 55781), (Start: 25 @55895 has 20 MA's), (Start: 26 @55898 has 77 MA's), (41, 55919), (45, 55943), (49, 55964), (52, 55997), (53, 56000), (67, 56045), (70, 56057), (77, 56072), (79, 56075), (89, 56108), (94, 56141), (100, 56165), (113, 56204), (119, 56240), (124, 56255),

Gene: Collard_75 Start: 51123, Stop: 51488, Start Num: 33

Candidate Starts for Collard_75:

(Start: 33 @51123 has 21 MA's), (39, 51138), (46, 51174), (53, 51222), (71, 51282), (79, 51309), (118, 51456),

Gene: CrimD_86 Start: 55155, Stop: 55556, Start Num: 25

Candidate Starts for CrimD_86:

(8, 54924), (10, 55041), (Start: 25 @55155 has 20 MA's), (Start: 26 @55158 has 77 MA's), (41, 55179), (49, 55224), (52, 55257), (53, 55260), (77, 55332), (89, 55368), (100, 55425), (113, 55464), (119, 55500), (124, 55515), (134, 55542),

Gene: Curiosium_94 Start: 56508, Stop: 56915, Start Num: 26

Candidate Starts for Curiosium_94:

(Start: 26 @56508 has 77 MA's), (37, 56520), (49, 56574), (52, 56607), (70, 56667), (77, 56691), (89, 56727), (100, 56784), (113, 56823), (119, 56859), (124, 56874), (134, 56901),

Gene: Dadosky_79 Start: 52247, Stop: 52609, Start Num: 33

Candidate Starts for Dadosky_79:

(21, 52199), (Start: 33 @52247 has 21 MA's), (39, 52262), (53, 52346), (71, 52406), (79, 52433), (118, 52577),

Gene: Dalmuri_86 Start: 55134, Stop: 55520, Start Num: 25

Candidate Starts for Dalmuri_86:

(Start: 25 @55134 has 20 MA's), (Start: 26 @55137 has 77 MA's), (Start: 30 @55140 has 2 MA's), (37, 55164), (39, 55170), (52, 55251), (53, 55254), (67, 55299), (76, 55329), (92, 55392), (109, 55443), (128, 55506), (129, 55512),

Gene: Dartin_86 Start: 56056, Stop: 56409, Start Num: 25

Candidate Starts for Dartin_86:

(Start: 25 @56056 has 20 MA's), (Start: 29 @56062 has 9 MA's), (39, 56083), (49, 56128), (52, 56161), (69, 56215), (92, 56299), (95, 56308), (111, 56350),

Gene: Deby_86 Start: 55645, Stop: 56043, Start Num: 26

Candidate Starts for Deby_86:

(8, 55411), (10, 55528), (Start: 25 @55642 has 20 MA's), (Start: 26 @55645 has 77 MA's), (41, 55666), (49, 55711), (52, 55744), (53, 55747), (68, 55795), (77, 55819), (89, 55855), (100, 55912), (113, 55951), (119, 55987), (124, 56002), (134, 56029),

Gene: Devera_92 Start: 56005, Stop: 56388, Start Num: 26

Candidate Starts for Devera_92:

(8, 55771), (10, 55888), (Start: 25 @56002 has 20 MA's), (Start: 26 @56005 has 77 MA's), (Start: 30 @56008 has 2 MA's), (37, 56032), (39, 56038), (52, 56119), (53, 56122), (67, 56167), (76, 56197), (92, 56260), (109, 56311), (128, 56374),

Gene: Diminimus_121 Start: 63425, Stop: 63829, Start Num: 22

Candidate Starts for Diminimus_121:

(18, 63401), (20, 63404), (Start: 22 @63425 has 13 MA's), (Start: 33 @63455 has 21 MA's), (42, 63479), (48, 63515), (52, 63554), (54, 63557), (61, 63584), (81, 63650), (98, 63728), (106, 63749), (125, 63818),

Gene: Dole_89 Start: 56005, Stop: 56391, Start Num: 25

Candidate Starts for Dole_89:

(8, 55774), (10, 55891), (Start: 25 @56005 has 20 MA's), (Start: 26 @56008 has 77 MA's), (Start: 30 @56011 has 2 MA's), (37, 56035), (39, 56041), (52, 56122), (53, 56125), (67, 56170), (76, 56200), (92, 56263), (109, 56314), (128, 56377),

Gene: DrHayes_86 Start: 55402, Stop: 55782, Start Num: 26

Candidate Starts for DrHayes_86:

(Start: 25 @55399 has 20 MA's), (Start: 26 @55402 has 77 MA's), (Start: 30 @55405 has 2 MA's), (39, 55435), (52, 55516), (79, 55597), (92, 55657), (93, 55660), (109, 55705), (129, 55774),

Gene: Dulcita_121 Start: 63426, Stop: 63830, Start Num: 22

Candidate Starts for Dulcita_121:

(18, 63402), (20, 63405), (Start: 22 @63426 has 13 MA's), (Start: 33 @63456 has 21 MA's), (42, 63480), (48, 63516), (52, 63555), (54, 63558), (61, 63585), (81, 63651), (98, 63729), (106, 63750), (125, 63819),

Gene: Dumbo_118 Start: 66225, Stop: 66566, Start Num: 31

Candidate Starts for Dumbo_118:

(24, 66207), (Start: 31 @66225 has 3 MA's), (Start: 44 @66267 has 3 MA's), (48, 66288), (71, 66387), (80, 66417), (85, 66432), (109, 66519), (111, 66525), (116, 66543),

Gene: Durfee_86 Start: 55334, Stop: 55717, Start Num: 26

Candidate Starts for Durfee_86:

(Start: 25 @55331 has 20 MA's), (Start: 26 @55334 has 77 MA's), (Start: 30 @55337 has 2 MA's), (37, 55361), (39, 55367), (52, 55448), (53, 55451), (67, 55496), (76, 55526), (92, 55589), (109, 55640), (128, 55703), (129, 55709),

Gene: Edugator_75 Start: 53418, Stop: 53780, Start Num: 33

Candidate Starts for Edugator_75:

(21, 53370), (Start: 33 @53418 has 21 MA's), (39, 53433), (53, 53517), (71, 53577), (79, 53604), (118, 53748),

Gene: Efra2_93 Start: 56492, Stop: 56866, Start Num: 30

Candidate Starts for Efra2_93:

(17, 56435), (27, 56489), (Start: 30 @56492 has 2 MA's), (39, 56522), (49, 56570), (52, 56603), (67, 56651), (76, 56681), (92, 56744), (95, 56753), (109, 56789), (129, 56858),

Gene: Elite2014_117 Start: 66074, Stop: 66373, Start Num: 44

Candidate Starts for Elite2014_117:

(24, 66014), (Start: 31 @66032 has 3 MA's), (Start: 44 @66074 has 3 MA's), (48, 66095), (71, 66194), (80, 66224), (85, 66239), (109, 66326), (111, 66332), (116, 66350),

Gene: Emerson_88 Start: 55322, Stop: 55720, Start Num: 26

Candidate Starts for Emerson_88:

(8, 55088), (10, 55205), (Start: 25 @55319 has 20 MA's), (Start: 26 @55322 has 77 MA's), (41, 55343), (45, 55367), (49, 55388), (52, 55421), (53, 55424), (89, 55532), (100, 55589), (113, 55628), (119, 55664), (124, 55679), (134, 55706),

Gene: Faiyaz_127 Start: 73350, Stop: 73733, Start Num: 35

Candidate Starts for Faiyaz_127:

(Start: 35 @73350 has 3 MA's), (38, 73359), (51, 73428), (53, 73446), (59, 73470), (68, 73494), (78, 73521), (90, 73560), (92, 73581), (105, 73623), (107, 73635), (112, 73650), (120, 73692), (121, 73698), (123, 73701), (132, 73722),

Gene: Feyre_80 Start: 54820, Stop: 55185, Start Num: 33

Candidate Starts for Feyre_80:

(16, 54748), (Start: 33 @54820 has 21 MA's), (39, 54835), (53, 54919), (71, 54979), (79, 55006), (92, 55066), (118, 55153),

Gene: FoghornLeghorn_115 Start: 65163, Stop: 65462, Start Num: 44

Candidate Starts for FoghornLeghorn_115:

(24, 65103), (Start: 31 @65121 has 3 MA's), (Start: 44 @65163 has 3 MA's), (48, 65184), (71, 65283), (80, 65313), (85, 65328), (109, 65415), (111, 65421), (116, 65439),

Gene: FreakyGoo_120 Start: 63910, Stop: 64314, Start Num: 22

Candidate Starts for FreakyGoo_120:

(18, 63886), (20, 63889), (Start: 22 @63910 has 13 MA's), (Start: 33 @63940 has 21 MA's), (42, 63964), (48, 64000), (52, 64039), (54, 64042), (61, 64069), (81, 64135), (98, 64213), (106, 64234), (125, 64303),

Gene: Ganymede_86 Start: 55143, Stop: 55523, Start Num: 26

Candidate Starts for Ganymede_86:

(Start: 25 @55140 has 20 MA's), (Start: 26 @55143 has 77 MA's), (Start: 30 @55146 has 2 MA's), (37, 55170), (52, 55257), (53, 55260), (79, 55338), (92, 55398), (109, 55446), (128, 55509), (129, 55515),

Gene: Gengar_79 Start: 53635, Stop: 54000, Start Num: 33

Candidate Starts for Gengar_79:

(15, 53560), (Start: 33 @53635 has 21 MA's), (39, 53650), (53, 53734), (71, 53794), (79, 53821), (92, 53881), (118, 53968),

Gene: Geraldini_88 Start: 55160, Stop: 55561, Start Num: 25

Candidate Starts for Geraldini_88:

(4, 54815), (8, 54929), (10, 55046), (Start: 25 @55160 has 20 MA's), (Start: 26 @55163 has 77 MA's), (41, 55184), (49, 55229), (52, 55262), (53, 55265), (77, 55337), (89, 55373), (100, 55430), (113, 55469), (119, 55505), (124, 55520), (134, 55547),

Gene: Glaske16_123 Start: 64543, Stop: 64947, Start Num: 22

Candidate Starts for Glaske16_123:

(18, 64519), (20, 64522), (Start: 22 @64543 has 13 MA's), (Start: 33 @64573 has 21 MA's), (42, 64597), (48, 64633), (52, 64672), (54, 64675), (61, 64702), (81, 64768), (98, 64846), (106, 64867), (125, 64936),

Gene: Guanica15_92 Start: 56184, Stop: 56558, Start Num: 30

Candidate Starts for Guanica15_92:

(17, 56127), (27, 56181), (Start: 30 @56184 has 2 MA's), (39, 56214), (49, 56262), (52, 56295), (67, 56343), (76, 56373), (92, 56436), (95, 56445), (109, 56481), (129, 56550),

Gene: Guillsminger_80 Start: 53483, Stop: 53848, Start Num: 33

Candidate Starts for Guillsminger_80:

(15, 53408), (Start: 33 @53483 has 21 MA's), (39, 53498), (53, 53582), (71, 53642), (79, 53669), (92, 53729), (118, 53816),

Gene: HedwigODU_86 Start: 55173, Stop: 55559, Start Num: 25

Candidate Starts for HedwigODU_86:

(Start: 25 @55173 has 20 MA's), (Start: 26 @55176 has 77 MA's), (Start: 30 @55179 has 2 MA's), (37, 55203), (39, 55209), (52, 55290), (53, 55293), (67, 55338), (76, 55368), (92, 55431), (109, 55482), (128, 55545), (129, 55551),

Gene: Heftyboy_77 Start: 52850, Stop: 53215, Start Num: 33

Candidate Starts for Heftyboy_77:

(20, 52805), (Start: 33 @52850 has 21 MA's), (39, 52865), (53, 52949), (71, 53009), (79, 53036), (118, 53183),

Gene: Hilltopfarm_130 Start: 74175, Stop: 74558, Start Num: 35

Candidate Starts for Hilltopfarm_130:

(Start: 35 @74175 has 3 MA's), (38, 74184), (51, 74253), (53, 74271), (59, 74295), (68, 74319), (78, 74346), (90, 74385), (92, 74406), (105, 74448), (107, 74460), (112, 74475), (120, 74517), (121, 74523), (123, 74526), (132, 74547),

Gene: Homura_85 Start: 55137, Stop: 55520, Start Num: 26

Candidate Starts for Homura_85:

(Start: 25 @55134 has 20 MA's), (Start: 26 @55137 has 77 MA's), (Start: 30 @55140 has 2 MA's), (37, 55164), (39, 55170), (52, 55251), (53, 55254), (67, 55299), (76, 55329), (92, 55392), (109, 55443),

(128, 55506), (129, 55512),

Gene: Hyperbowlee_85 Start: 55334, Stop: 55717, Start Num: 26

Candidate Starts for Hyperbowlee_85:

(Start: 25 @55331 has 20 MA's), (Start: 26 @55334 has 77 MA's), (Start: 30 @55337 has 2 MA's), (37, 55361), (39, 55367), (52, 55448), (53, 55451), (67, 55496), (76, 55526), (92, 55589), (109, 55640), (128, 55703), (129, 55709),

Gene: IPHane7_118 Start: 63430, Stop: 63834, Start Num: 22

Candidate Starts for IPHane7_118:

(18, 63406), (20, 63409), (Start: 22 @63430 has 13 MA's), (Start: 33 @63460 has 21 MA's), (42, 63484), (48, 63520), (52, 63559), (54, 63562), (61, 63589), (81, 63655), (98, 63733), (106, 63754), (125, 63823),

Gene: Illumine_90 Start: 56007, Stop: 56390, Start Num: 26

Candidate Starts for Illumine_90:

(8, 55773), (10, 55890), (Start: 25 @56004 has 20 MA's), (Start: 26 @56007 has 77 MA's), (Start: 30 @56010 has 2 MA's), (37, 56034), (39, 56040), (52, 56121), (53, 56124), (67, 56169), (76, 56199), (92, 56262), (109, 56313), (128, 56376),

Gene: Inky_86 Start: 55134, Stop: 55520, Start Num: 25

Candidate Starts for Inky_86:

(Start: 25 @55134 has 20 MA's), (Start: 26 @55137 has 77 MA's), (Start: 30 @55140 has 2 MA's), (37, 55164), (39, 55170), (52, 55251), (53, 55254), (67, 55299), (76, 55329), (92, 55392), (109, 55443), (128, 55506), (129, 55512),

Gene: InvictusManeo_75 Start: 51163, Stop: 51528, Start Num: 33

Candidate Starts for InvictusManeo_75:

(15, 51088), (Start: 33 @51163 has 21 MA's), (39, 51178), (53, 51262), (71, 51322), (79, 51349), (118, 51496),

Gene: Izel_119 Start: 63425, Stop: 63829, Start Num: 22

Candidate Starts for Izel_119:

(18, 63401), (20, 63404), (Start: 22 @63425 has 13 MA's), (Start: 33 @63455 has 21 MA's), (42, 63479), (48, 63515), (52, 63554), (54, 63557), (61, 63584), (81, 63650), (98, 63728), (106, 63749), (125, 63818),

Gene: JAWS_85 Start: 55120, Stop: 55506, Start Num: 25

Candidate Starts for JAWS_85:

(Start: 25 @55120 has 20 MA's), (Start: 26 @55123 has 77 MA's), (Start: 30 @55126 has 2 MA's), (37, 55150), (39, 55156), (52, 55237), (53, 55240), (67, 55285), (76, 55315), (92, 55378), (109, 55429), (128, 55492), (129, 55498),

Gene: Jarvi_86 Start: 55137, Stop: 55520, Start Num: 26

Candidate Starts for Jarvi_86:

(Start: 25 @55134 has 20 MA's), (Start: 26 @55137 has 77 MA's), (Start: 30 @55140 has 2 MA's), (37, 55164), (39, 55170), (52, 55251), (53, 55254), (67, 55299), (76, 55329), (92, 55392), (109, 55443), (128, 55506), (129, 55512),

Gene: Jayhawk_88 Start: 55162, Stop: 55536, Start Num: 26

Candidate Starts for Jayhawk_88:

(8, 54928), (10, 55045), (Start: 25 @55159 has 20 MA's), (Start: 26 @55162 has 77 MA's), (Start: 30 @55165 has 2 MA's), (39, 55192), (47, 55231), (49, 55240), (57, 55294), (62, 55306), (71, 55336), (87,

55384), (92, 55414), (94, 55423), (96, 55432), (106, 55459), (109, 55468), (122, 55519),

Gene: Jeckyll_86 Start: 55137, Stop: 55520, Start Num: 26

Candidate Starts for Jeckyll_86:

(Start: 25 @55134 has 20 MA's), (Start: 26 @55137 has 77 MA's), (Start: 30 @55140 has 2 MA's), (37, 55164), (39, 55170), (52, 55251), (53, 55254), (67, 55299), (76, 55329), (92, 55392), (109, 55443), (128, 55506), (129, 55512),

Gene: Joy99_87 Start: 55263, Stop: 55649, Start Num: 25

Candidate Starts for Joy99_87:

(Start: 25 @55263 has 20 MA's), (Start: 26 @55266 has 77 MA's), (Start: 30 @55269 has 2 MA's), (37, 55293), (39, 55299), (52, 55380), (53, 55383), (67, 55428), (76, 55458), (92, 55521), (109, 55572), (128, 55635), (129, 55641),

Gene: KiSi_88 Start: 55400, Stop: 55765, Start Num: 26

Candidate Starts for KiSi_88:

(Start: 25 @55397 has 20 MA's), (Start: 26 @55400 has 77 MA's), (49, 55466), (52, 55499), (83, 55598), (89, 55616), (92, 55640), (110, 55691), (119, 55727), (124, 55742), (125, 55745),

Gene: KleverKiS_123 Start: 64915, Stop: 65319, Start Num: 22

Candidate Starts for KleverKiS_123:

(18, 64891), (20, 64894), (Start: 22 @64915 has 13 MA's), (Start: 33 @64945 has 21 MA's), (42, 64969), (48, 65005), (52, 65044), (54, 65047), (61, 65074), (81, 65140), (98, 65218), (106, 65239), (125, 65308),

Gene: Kratio_79 Start: 52141, Stop: 52503, Start Num: 33

Candidate Starts for Kratio_79:

(20, 52093), (Start: 33 @52141 has 21 MA's), (39, 52156), (53, 52240), (71, 52300), (79, 52327), (118, 52471),

Gene: Larva_78 Start: 53119, Stop: 53481, Start Num: 33

Candidate Starts for Larva_78:

(21, 53071), (Start: 33 @53119 has 21 MA's), (39, 53134), (53, 53218), (71, 53278), (79, 53305), (118, 53449),

Gene: LastHope_92 Start: 55896, Stop: 56273, Start Num: 26

Candidate Starts for LastHope_92:

(Start: 25 @55893 has 20 MA's), (Start: 26 @55896 has 77 MA's), (39, 55926), (52, 56007), (79, 56088), (83, 56103), (92, 56148), (93, 56151), (98, 56169), (102, 56181), (109, 56196), (129, 56265),

Gene: LaterM_86 Start: 55505, Stop: 55885, Start Num: 26

Candidate Starts for LaterM_86:

(10, 55388), (Start: 25 @55502 has 20 MA's), (Start: 26 @55505 has 77 MA's), (Start: 30 @55508 has 2 MA's), (37, 55532), (39, 55538), (52, 55619), (79, 55700), (92, 55760), (98, 55781), (109, 55808), (128, 55871),

Gene: LeMond_87 Start: 55362, Stop: 55727, Start Num: 26

Candidate Starts for LeMond_87:

(Start: 25 @55359 has 20 MA's), (Start: 26 @55362 has 77 MA's), (49, 55428), (52, 55461), (83, 55560), (89, 55578), (92, 55602), (110, 55653), (119, 55689), (124, 55704), (125, 55707),

Gene: Leston_79 Start: 53600, Stop: 53965, Start Num: 33

Candidate Starts for Leston_79:

(15, 53525), (Start: 33 @53600 has 21 MA's), (39, 53615), (53, 53699), (71, 53759), (79, 53786), (92, 53846), (118, 53933),

Gene: LilhomieP_120 Start: 64708, Stop: 65112, Start Num: 22

Candidate Starts for LilhomieP_120:

(18, 64684), (20, 64687), (Start: 22 @64708 has 13 MA's), (Start: 33 @64738 has 21 MA's), (42, 64762), (48, 64798), (52, 64837), (54, 64840), (61, 64867), (81, 64933), (98, 65011), (106, 65032), (125, 65101),

Gene: Lilpickle_117 Start: 66074, Stop: 66373, Start Num: 44

Candidate Starts for Lilpickle_117:

(24, 66014), (Start: 31 @66032 has 3 MA's), (Start: 44 @66074 has 3 MA's), (48, 66095), (71, 66194), (80, 66224), (85, 66239), (109, 66326), (111, 66332), (116, 66350),

Gene: LindNT_84 Start: 55242, Stop: 55622, Start Num: 25

Candidate Starts for LindNT_84:

(7, 54969), (8, 55011), (10, 55128), (Start: 25 @55242 has 20 MA's), (Start: 26 @55245 has 77 MA's), (52, 55356), (53, 55359), (79, 55437), (83, 55452), (92, 55497), (98, 55518), (102, 55530), (109, 55545), (128, 55608),

Gene: Llorens_86 Start: 55137, Stop: 55520, Start Num: 26

Candidate Starts for Llorens_86:

(Start: 25 @55134 has 20 MA's), (Start: 26 @55137 has 77 MA's), (Start: 30 @55140 has 2 MA's), (37, 55164), (39, 55170), (52, 55251), (53, 55254), (67, 55299), (76, 55329), (92, 55392), (109, 55443), (128, 55506), (129, 55512),

Gene: Lunahalos_86 Start: 55137, Stop: 55520, Start Num: 26

Candidate Starts for Lunahalos_86:

(Start: 25 @55134 has 20 MA's), (Start: 26 @55137 has 77 MA's), (Start: 30 @55140 has 2 MA's), (37, 55164), (39, 55170), (52, 55251), (53, 55254), (67, 55299), (76, 55329), (92, 55392), (109, 55443), (128, 55506), (129, 55512),

Gene: MacKat_83 Start: 50782, Stop: 51147, Start Num: 26

Candidate Starts for MacKat_83:

(10, 50665), (Start: 25 @50779 has 20 MA's), (Start: 26 @50782 has 77 MA's), (41, 50803), (45, 50827), (49, 50848), (52, 50881), (53, 50884), (67, 50929), (70, 50941), (77, 50956), (79, 50959), (89, 50992), (94, 51025), (100, 51049), (113, 51088), (119, 51124), (124, 51139),

Gene: MadamMonkfish_117 Start: 66042, Stop: 66383, Start Num: 31

Candidate Starts for MadamMonkfish_117:

(24, 66024), (Start: 31 @66042 has 3 MA's), (Start: 44 @66084 has 3 MA's), (48, 66105), (71, 66204), (80, 66234), (85, 66249), (109, 66336), (111, 66342), (116, 66360),

Gene: MarkPhew_88 Start: 55429, Stop: 55788, Start Num: 26

Candidate Starts for MarkPhew_88:

(Start: 25 @55426 has 20 MA's), (Start: 26 @55429 has 77 MA's), (49, 55492), (52, 55525), (65, 55567), (77, 55606), (81, 55615), (92, 55666), (93, 55669), (110, 55717), (119, 55750), (125, 55768),

Gene: Marshawn_84 Start: 55567, Stop: 55941, Start Num: 26

Candidate Starts for Marshawn_84:

(Start: 25 @55564 has 20 MA's), (Start: 26 @55567 has 77 MA's), (36, 55579), (49, 55633), (52, 55666), (70, 55726), (71, 55729), (75, 55750), (89, 55789), (91, 55810), (95, 55822), (107, 55858), (119, 55903), (125, 55921),

Gene: McMater_86 Start: 56056, Stop: 56409, Start Num: 25

Candidate Starts for McMater_86:

(Start: 25 @56056 has 20 MA's), (Start: 29 @56062 has 9 MA's), (39, 56083), (49, 56128), (52, 56161), (69, 56215), (92, 56299), (95, 56308), (111, 56350),

Gene: MeaningOfLife_88 Start: 55825, Stop: 56205, Start Num: 26

Candidate Starts for MeaningOfLife_88:

(8, 55591), (10, 55708), (Start: 25 @55822 has 20 MA's), (Start: 26 @55825 has 77 MA's), (Start: 30 @55828 has 2 MA's), (37, 55852), (52, 55939), (53, 55942), (79, 56020), (92, 56080), (109, 56128), (128, 56191), (129, 56197),

Gene: Megsy_90 Start: 55453, Stop: 55851, Start Num: 26

Candidate Starts for Megsy_90:

(Start: 25 @55450 has 20 MA's), (Start: 26 @55453 has 77 MA's), (41, 55474), (49, 55519), (52, 55552), (53, 55555), (77, 55627), (89, 55663), (100, 55720), (113, 55759), (119, 55795), (124, 55810), (134, 55837),

Gene: Miryou_81 Start: 55458, Stop: 55823, Start Num: 33

Candidate Starts for Miryou_81:

(11, 55347), (12, 55374), (19, 55410), (Start: 33 @55458 has 21 MA's), (39, 55473), (53, 55557), (71, 55617), (79, 55644), (92, 55704), (118, 55791),

Gene: Murucutumbu_86 Start: 56026, Stop: 56412, Start Num: 25

Candidate Starts for Murucutumbu_86:

(Start: 25 @56026 has 20 MA's), (Start: 26 @56029 has 77 MA's), (Start: 30 @56032 has 2 MA's), (37, 56056), (39, 56062), (52, 56143), (53, 56146), (67, 56191), (76, 56221), (92, 56284), (109, 56335), (118, 56371), (122, 56386), (128, 56398),

Gene: Mynx_87 Start: 55442, Stop: 55828, Start Num: 25

Candidate Starts for Mynx_87:

(10, 55328), (Start: 25 @55442 has 20 MA's), (Start: 26 @55445 has 77 MA's), (Start: 30 @55448 has 2 MA's), (37, 55472), (39, 55478), (52, 55559), (53, 55562), (67, 55607), (76, 55637), (92, 55700), (109, 55751), (128, 55814), (129, 55820),

Gene: Neighly_79 Start: 53118, Stop: 53480, Start Num: 33

Candidate Starts for Neighly_79:

(21, 53070), (Start: 33 @53118 has 21 MA's), (39, 53133), (53, 53217), (71, 53277), (79, 53304), (118, 53448),

Gene: Nibb_88 Start: 55087, Stop: 55446, Start Num: 26

Candidate Starts for Nibb_88:

(Start: 25 @55084 has 20 MA's), (Start: 26 @55087 has 77 MA's), (49, 55150), (67, 55231), (77, 55264), (81, 55273), (84, 55285), (89, 55300), (93, 55327), (95, 55333), (110, 55381), (125, 55426),

Gene: Niklas_87 Start: 56102, Stop: 56449, Start Num: 29

Candidate Starts for Niklas_87:

(Start: 25 @56096 has 20 MA's), (Start: 29 @56102 has 9 MA's), (39, 56123), (49, 56168), (52, 56201), (69, 56255), (92, 56339), (95, 56348), (111, 56390),

Gene: OkiRoe_80 Start: 54598, Stop: 54963, Start Num: 33

Candidate Starts for OkiRoe_80:

(5, 54283), (6, 54289), (9, 54469), (13, 54511), (14, 54517), (21, 54550), (Start: 33 @54598 has 21 MA's), (39, 54613), (53, 54697), (71, 54757), (79, 54784), (92, 54844), (118, 54931),

Gene: Omnicron_83 Start: 55712, Stop: 56080, Start Num: 33

Candidate Starts for Omnicron_83:

(Start: 33 @55712 has 21 MA's), (39, 55727), (53, 55811), (71, 55871), (74, 55886), (79, 55898), (81, 55904), (92, 55958), (104, 55994), (118, 56045),

Gene: Oscar_88 Start: 55283, Stop: 55648, Start Num: 26

Candidate Starts for Oscar_88:

(Start: 25 @55280 has 20 MA's), (Start: 26 @55283 has 77 MA's), (49, 55349), (52, 55382), (83, 55481), (89, 55499), (92, 55523), (110, 55574), (119, 55610), (124, 55625), (125, 55628),

Gene: Padfoot_86 Start: 55334, Stop: 55717, Start Num: 26

Candidate Starts for Padfoot_86:

(Start: 25 @55331 has 20 MA's), (Start: 26 @55334 has 77 MA's), (Start: 30 @55337 has 2 MA's), (37, 55361), (39, 55367), (52, 55448), (53, 55451), (67, 55496), (76, 55526), (92, 55589), (109, 55640), (128, 55703), (129, 55709),

Gene: Padpat_89 Start: 55322, Stop: 55720, Start Num: 26

Candidate Starts for Padpat_89:

(8, 55088), (10, 55205), (Start: 25 @55319 has 20 MA's), (Start: 26 @55322 has 77 MA's), (41, 55343), (45, 55367), (49, 55388), (52, 55421), (53, 55424), (89, 55532), (100, 55589), (113, 55628), (119, 55664), (124, 55679), (134, 55706),

Gene: Paola_79 Start: 53483, Stop: 53848, Start Num: 33

Candidate Starts for Paola_79:

(15, 53408), (Start: 33 @53483 has 21 MA's), (39, 53498), (53, 53582), (71, 53642), (79, 53669), (92, 53729), (118, 53816),

Gene: Peanam_87 Start: 56081, Stop: 56428, Start Num: 29

Candidate Starts for Peanam_87:

(Start: 25 @56075 has 20 MA's), (Start: 29 @56081 has 9 MA's), (39, 56102), (49, 56147), (52, 56180), (69, 56234), (92, 56318), (95, 56327), (111, 56369),

Gene: Peel_86 Start: 55139, Stop: 55522, Start Num: 26

Candidate Starts for Peel_86:

(Start: 25 @55136 has 20 MA's), (Start: 26 @55139 has 77 MA's), (Start: 30 @55142 has 2 MA's), (37, 55166), (39, 55172), (52, 55253), (53, 55256), (67, 55301), (76, 55331), (92, 55394), (109, 55445), (128, 55508), (129, 55514),

Gene: PegLeg_124 Start: 64592, Stop: 64996, Start Num: 22

Candidate Starts for PegLeg_124:

(18, 64568), (20, 64571), (Start: 22 @64592 has 13 MA's), (Start: 33 @64622 has 21 MA's), (42, 64646), (48, 64682), (52, 64721), (54, 64724), (61, 64751), (81, 64817), (98, 64895), (106, 64916), (125, 64985),

Gene: Pharb_85 Start: 54296, Stop: 54655, Start Num: 26

Candidate Starts for Pharb_85:

(Start: 26 @54296 has 77 MA's), (34, 54302), (47, 54353), (52, 54395), (53, 54398), (57, 54416), (65, 54437), (99, 54563), (118, 54623), (122, 54638),

Gene: Phrank_93 Start: 56224, Stop: 56586, Start Num: 29

Candidate Starts for Phrank_93:

(Start: 29 @56224 has 9 MA's), (34, 56230), (39, 56245), (52, 56326), (70, 56386), (71, 56389), (79, 56410), (92, 56464), (95, 56473), (111, 56515),

Gene: Phrappuccino_162 Start: 109339, Stop: 109698, Start Num: 26

Candidate Starts for Phrappuccino_162:

(Start: 26 @109339 has 77 MA's), (41, 109360), (52, 109438), (55, 109444), (68, 109489), (88, 109552), (92, 109576), (106, 109621), (109, 109630), (118, 109663),

Gene: Piatt_85 Start: 55334, Stop: 55717, Start Num: 26

Candidate Starts for Piatt_85:

(Start: 25 @55331 has 20 MA's), (Start: 26 @55334 has 77 MA's), (Start: 30 @55337 has 2 MA's), (37, 55361), (39, 55367), (52, 55448), (53, 55451), (67, 55496), (76, 55526), (92, 55589), (109, 55640), (128, 55703), (129, 55709),

Gene: Pokerus_86 Start: 55146, Stop: 55526, Start Num: 26

Candidate Starts for Pokerus_86:

(10, 55029), (Start: 25 @55143 has 20 MA's), (Start: 26 @55146 has 77 MA's), (Start: 30 @55149 has 2 MA's), (37, 55173), (52, 55260), (53, 55263), (79, 55341), (92, 55401), (109, 55449), (128, 55512), (129, 55518),

Gene: Porky_117 Start: 66236, Stop: 66577, Start Num: 31

Candidate Starts for Porky_117:

(24, 66218), (Start: 31 @66236 has 3 MA's), (Start: 44 @66278 has 3 MA's), (48, 66299), (71, 66398), (80, 66428), (85, 66443), (109, 66530), (111, 66536), (116, 66554),

Gene: Prithvi_88 Start: 55537, Stop: 55920, Start Num: 26

Candidate Starts for Prithvi_88:

(Start: 25 @55534 has 20 MA's), (Start: 26 @55537 has 77 MA's), (Start: 30 @55540 has 2 MA's), (37, 55564), (39, 55570), (52, 55651), (53, 55654), (67, 55699), (76, 55729), (92, 55792), (109, 55843), (128, 55906),

Gene: Psycho_77 Start: 52244, Stop: 52606, Start Num: 33

Candidate Starts for Psycho_77:

(21, 52196), (Start: 33 @52244 has 21 MA's), (39, 52259), (53, 52343), (71, 52403), (79, 52430), (118, 52574),

Gene: QuincyRose_84 Start: 55140, Stop: 55523, Start Num: 25

Candidate Starts for QuincyRose_84:

(Start: 25 @55140 has 20 MA's), (Start: 26 @55143 has 77 MA's), (Start: 30 @55146 has 2 MA's), (37, 55170), (52, 55257), (53, 55260), (79, 55338), (92, 55398), (109, 55446), (128, 55509), (129, 55515),

Gene: Ramen_87 Start: 54901, Stop: 55275, Start Num: 26

Candidate Starts for Ramen_87:

(8, 54667), (10, 54784), (Start: 25 @54898 has 20 MA's), (Start: 26 @54901 has 77 MA's), (Start: 30 @54904 has 2 MA's), (39, 54931), (47, 54970), (49, 54979), (57, 55033), (62, 55045), (71, 55075), (87, 55123), (92, 55153), (94, 55162), (96, 55171), (106, 55198), (109, 55207), (122, 55258),

Gene: Rapunzel97_88 Start: 55117, Stop: 55491, Start Num: 26

Candidate Starts for Rapunzel97_88:

(8, 54883), (10, 55000), (Start: 25 @55114 has 20 MA's), (Start: 26 @55117 has 77 MA's), (Start: 30 @55120 has 2 MA's), (39, 55147), (47, 55186), (49, 55195), (57, 55249), (62, 55261), (71, 55291), (87, 55339), (92, 55369), (94, 55378), (96, 55387), (106, 55414), (109, 55423), (122, 55474),

Gene: Reindeer_121 Start: 64799, Stop: 65203, Start Num: 22

Candidate Starts for Reindeer_121:

(Start: 22 @64799 has 13 MA's), (23, 64805), (42, 64853), (43, 64865), (47, 64886), (48, 64889), (50, 64901), (54, 64931), (60, 64955), (61, 64958), (98, 65102), (106, 65123), (115, 65153),

Gene: Richo_86 Start: 56056, Stop: 56409, Start Num: 25

Candidate Starts for Richo_86:

(Start: 25 @56056 has 20 MA's), (Start: 29 @56062 has 9 MA's), (39, 56083), (49, 56128), (52, 56161), (69, 56215), (92, 56299), (95, 56308), (111, 56350),

Gene: Rosmarinus_86 Start: 55125, Stop: 55508, Start Num: 26

Candidate Starts for Rosmarinus_86:

(Start: 25 @55122 has 20 MA's), (Start: 26 @55125 has 77 MA's), (Start: 30 @55128 has 2 MA's), (37, 55152), (39, 55158), (52, 55239), (53, 55242), (67, 55287), (76, 55317), (92, 55380), (109, 55431), (128, 55494), (129, 55500),

Gene: SamuelLPlaqson_86 Start: 55402, Stop: 55782, Start Num: 26

Candidate Starts for SamuelLPlaqson_86:

(Start: 25 @55399 has 20 MA's), (Start: 26 @55402 has 77 MA's), (Start: 30 @55405 has 2 MA's), (39, 55435), (52, 55516), (79, 55597), (92, 55657), (93, 55660), (109, 55705), (129, 55774),

Gene: Scarlett_87 Start: 55157, Stop: 55522, Start Num: 26

Candidate Starts for Scarlett_87:

(Start: 25 @55154 has 20 MA's), (Start: 26 @55157 has 77 MA's), (49, 55223), (52, 55256), (83, 55355), (110, 55448), (119, 55484), (125, 55502),

Gene: Settecandela_162 Start: 109339, Stop: 109698, Start Num: 26

Candidate Starts for Settecandela_162:

(Start: 26 @109339 has 77 MA's), (41, 109360), (52, 109438), (55, 109444), (68, 109489), (88, 109552), (92, 109576), (106, 109621), (109, 109630), (118, 109663),

Gene: Shaobing_86 Start: 56149, Stop: 56496, Start Num: 29

Candidate Starts for Shaobing_86:

(Start: 25 @56143 has 20 MA's), (Start: 29 @56149 has 9 MA's), (39, 56170), (49, 56215), (52, 56248), (69, 56302), (92, 56386), (95, 56395), (111, 56437),

Gene: ShiaSurprise_87 Start: 55334, Stop: 55717, Start Num: 26

Candidate Starts for ShiaSurprise_87:

(Start: 25 @55331 has 20 MA's), (Start: 26 @55334 has 77 MA's), (Start: 30 @55337 has 2 MA's), (37, 55361), (39, 55367), (52, 55448), (53, 55451), (67, 55496), (76, 55526), (92, 55589), (109, 55640), (128, 55703), (129, 55709),

Gene: SirPhilip_86 Start: 55346, Stop: 55717, Start Num: 25

Candidate Starts for SirPhilip_86:

(Start: 25 @55346 has 20 MA's), (Start: 33 @55349 has 21 MA's), (40, 55364), (49, 55409), (60, 55469), (71, 55505), (79, 55526), (83, 55541), (92, 55583), (109, 55643), (111, 55649),

Gene: Skinny_126 Start: 65708, Stop: 66112, Start Num: 22

Candidate Starts for Skinny_126:

(18, 65684), (20, 65687), (Start: 22 @65708 has 13 MA's), (Start: 33 @65738 has 21 MA's), (42, 65762), (48, 65798), (52, 65837), (54, 65840), (61, 65867), (81, 65933), (98, 66011), (106, 66032), (125, 66101),

Gene: SlimJimmy_120 Start: 64417, Stop: 64821, Start Num: 22

Candidate Starts for SlimJimmy_120:

(18, 64393), (20, 64396), (Start: 22 @64417 has 13 MA's), (Start: 33 @64447 has 21 MA's), (42, 64471), (48, 64507), (52, 64546), (54, 64549), (61, 64576), (81, 64642), (98, 64720), (106, 64741), (125, 64810),

Gene: Slimphazie_88 Start: 55573, Stop: 55947, Start Num: 26

Candidate Starts for Slimphazie_88:

(8, 55339), (10, 55456), (Start: 25 @55570 has 20 MA's), (Start: 26 @55573 has 77 MA's), (Start: 30 @55576 has 2 MA's), (39, 55603), (47, 55642), (49, 55651), (57, 55705), (62, 55717), (71, 55747), (87, 55795), (92, 55825), (94, 55834), (96, 55843), (106, 55870), (109, 55879), (122, 55930),

Gene: SoSeph_77 Start: 52850, Stop: 53215, Start Num: 33

Candidate Starts for SoSeph_77:

(20, 52805), (Start: 33 @52850 has 21 MA's), (39, 52865), (53, 52949), (71, 53009), (79, 53036), (118, 53183),

Gene: Spock_86 Start: 55135, Stop: 55521, Start Num: 25

Candidate Starts for Spock_86:

(Start: 25 @55135 has 20 MA's), (Start: 26 @55138 has 77 MA's), (Start: 30 @55141 has 2 MA's), (37, 55165), (39, 55171), (52, 55252), (53, 55255), (67, 55300), (76, 55330), (92, 55393), (109, 55444), (128, 55507), (129, 55513),

Gene: Stinson_87 Start: 55311, Stop: 55691, Start Num: 26

Candidate Starts for Stinson_87:

(8, 55077), (10, 55194), (Start: 25 @55308 has 20 MA's), (Start: 26 @55311 has 77 MA's), (Start: 30 @55314 has 2 MA's), (37, 55338), (39, 55344), (52, 55425), (79, 55506), (92, 55566), (98, 55587), (109, 55614), (128, 55677),

Gene: Sulley_83 Start: 54742, Stop: 55116, Start Num: 26

Candidate Starts for Sulley_83:

(8, 54508), (10, 54625), (Start: 25 @54739 has 20 MA's), (Start: 26 @54742 has 77 MA's), (Start: 30 @54745 has 2 MA's), (39, 54772), (47, 54811), (49, 54820), (57, 54874), (62, 54886), (71, 54916), (87, 54964), (92, 54994), (94, 55003), (96, 55012), (106, 55039), (109, 55048), (122, 55099),

Gene: TClif_86 Start: 54693, Stop: 55031, Start Num: 29

Candidate Starts for TClif_86:

(Start: 29 @54693 has 9 MA's), (34, 54699), (39, 54714), (52, 54795), (58, 54819), (71, 54858), (73, 54864), (92, 54930), (95, 54939), (111, 54975),

Gene: Tachez_86 Start: 54979, Stop: 55365, Start Num: 25

Candidate Starts for Tachez_86:

(Start: 25 @54979 has 20 MA's), (Start: 26 @54982 has 77 MA's), (Start: 30 @54985 has 2 MA's), (37, 55009), (39, 55015), (52, 55096), (53, 55099), (67, 55144), (76, 55174), (92, 55237), (109, 55288), (128, 55351), (129, 55357),

Gene: TaiwanKao_87 Start: 55165, Stop: 55563, Start Num: 26

Candidate Starts for TaiwanKao_87:

(8, 54931), (10, 55048), (Start: 25 @55162 has 20 MA's), (Start: 26 @55165 has 77 MA's), (41, 55186), (49, 55231), (52, 55264), (53, 55267), (77, 55339), (89, 55375), (100, 55432), (113, 55471), (119, 55507), (124, 55522), (134, 55549),

Gene: Thyatira_80 Start: 55195, Stop: 55560, Start Num: 33

Candidate Starts for Thyatira_80:

(15, 55120), (Start: 33 @55195 has 21 MA's), (39, 55210), (53, 55294), (59, 55318), (71, 55354), (79, 55381), (92, 55441), (118, 55528),

Gene: Tierra_93 Start: 56850, Stop: 57212, Start Num: 29

Candidate Starts for Tierra_93:

(Start: 29 @56850 has 9 MA's), (34, 56856), (39, 56871), (52, 56952), (70, 57012), (71, 57015), (79, 57036), (92, 57090), (95, 57099), (111, 57141),

Gene: TingHuaYa_90 Start: 56200, Stop: 56598, Start Num: 26

Candidate Starts for TingHuaYa_90:

(4, 55852), (8, 55966), (10, 56083), (Start: 25 @56197 has 20 MA's), (Start: 26 @56200 has 77 MA's), (41, 56221), (49, 56266), (52, 56299), (70, 56359), (72, 56368), (77, 56374), (89, 56410), (100, 56467), (113, 56506), (119, 56542), (124, 56557), (134, 56584), (135, 56590),

Gene: TiniBug_85 Start: 55521, Stop: 55892, Start Num: 26

Candidate Starts for TiniBug_85:

(Start: 25 @55518 has 20 MA's), (Start: 26 @55521 has 77 MA's), (46, 55575), (71, 55683), (72, 55689), (74, 55698), (79, 55707), (83, 55722), (86, 55731), (101, 55794), (109, 55815), (122, 55866), (131, 55884),

Gene: Tiri_86 Start: 54789, Stop: 55187, Start Num: 26

Candidate Starts for Tiri_86:

(8, 54555), (10, 54672), (Start: 25 @54786 has 20 MA's), (Start: 26 @54789 has 77 MA's), (41, 54810), (49, 54855), (52, 54888), (53, 54891), (77, 54963), (89, 54999), (100, 55056), (113, 55095), (119, 55131), (124, 55146), (134, 55173),

Gene: Topper_86 Start: 55137, Stop: 55520, Start Num: 26

Candidate Starts for Topper_86:

(Start: 25 @55134 has 20 MA's), (Start: 26 @55137 has 77 MA's), (Start: 30 @55140 has 2 MA's), (37, 55164), (39, 55170), (52, 55251), (53, 55254), (67, 55299), (76, 55329), (92, 55392), (109, 55443), (128, 55506), (129, 55512),

Gene: TreyKay_88 Start: 55537, Stop: 55920, Start Num: 26

Candidate Starts for TreyKay_88:

(Start: 25 @55534 has 20 MA's), (Start: 26 @55537 has 77 MA's), (Start: 30 @55540 has 2 MA's), (37, 55564), (39, 55570), (52, 55651), (53, 55654), (67, 55699), (76, 55729), (92, 55792), (109, 55843), (128, 55906),

Gene: TribbleTrouble_87 Start: 56329, Stop: 56691, Start Num: 26

Candidate Starts for TribbleTrouble_87:

(Start: 26 @56329 has 77 MA's), (34, 56335), (49, 56395), (52, 56428), (53, 56431), (57, 56449), (68, 56479), (117, 56647), (127, 56680),

Gene: TruffulaTree_88 Start: 55539, Stop: 55913, Start Num: 26

Candidate Starts for TruffulaTree_88:

(8, 55305), (10, 55422), (Start: 25 @55536 has 20 MA's), (Start: 26 @55539 has 77 MA's), (Start: 30 @55542 has 2 MA's), (39, 55569), (47, 55608), (49, 55617), (57, 55671), (62, 55683), (71, 55713), (87, 55761), (92, 55791), (94, 55800), (96, 55809), (106, 55836), (109, 55845), (122, 55896),

Gene: Twitch_86 Start: 55139, Stop: 55522, Start Num: 26

Candidate Starts for Twitch_86:

(Start: 25 @55136 has 20 MA's), (Start: 26 @55139 has 77 MA's), (Start: 30 @55142 has 2 MA's), (37, 55166), (39, 55172), (52, 55253), (53, 55256), (67, 55301), (76, 55331), (92, 55394), (109, 55445), (128, 55508), (129, 55514),

Gene: TyDawg_115 Start: 63433, Stop: 63837, Start Num: 22

Candidate Starts for TyDawg_115:

(18, 63409), (20, 63412), (Start: 22 @63433 has 13 MA's), (Start: 33 @63463 has 21 MA's), (42, 63487), (48, 63523), (52, 63562), (54, 63565), (61, 63592), (81, 63658), (98, 63736), (106, 63757), (125, 63826),

Gene: Typha_125 Start: 73209, Stop: 73589, Start Num: 35

Candidate Starts for Typha_125:

(Start: 35 @73209 has 3 MA's), (38, 73218), (49, 73269), (51, 73287), (63, 73341), (68, 73353), (76, 73377), (78, 73380), (92, 73440), (107, 73494), (108, 73497), (120, 73551), (121, 73557), (123, 73560), (130, 73578),

Gene: Unicorn_93 Start: 56561, Stop: 56932, Start Num: 29

Candidate Starts for Unicorn_93:

(Start: 29 @56561 has 9 MA's), (34, 56567), (39, 56582), (59, 56690), (89, 56786), (111, 56861),

Gene: Urkel_86 Start: 55402, Stop: 55782, Start Num: 26

Candidate Starts for Urkel_86:

(Start: 25 @55399 has 20 MA's), (Start: 26 @55402 has 77 MA's), (Start: 30 @55405 has 2 MA's), (39, 55435), (52, 55516), (79, 55597), (92, 55657), (93, 55660), (109, 55705), (129, 55774),

Gene: Validus_92 Start: 56922, Stop: 57275, Start Num: 28

Candidate Starts for Validus_92:

(Start: 28 @56922 has 1 MA's), (39, 56943), (49, 56988), (52, 57021), (76, 57099), (92, 57162), (97, 57183), (111, 57213),

Gene: Veliki_87 Start: 55108, Stop: 55491, Start Num: 26

Candidate Starts for Veliki_87:

(Start: 25 @55105 has 20 MA's), (Start: 26 @55108 has 77 MA's), (Start: 30 @55111 has 2 MA's), (37, 55135), (39, 55141), (52, 55222), (53, 55225), (67, 55270), (76, 55300), (92, 55363), (109, 55414), (128, 55477), (129, 55483),

Gene: ViviJ_82 Start: 53212, Stop: 53577, Start Num: 33

Candidate Starts for ViviJ_82:

(Start: 33 @53212 has 21 MA's), (39, 53227), (46, 53263), (53, 53311), (71, 53371), (79, 53398), (118, 53545),

Gene: Waterfoul_79 Start: 53265, Stop: 53630, Start Num: 33

Candidate Starts for Waterfoul_79:

(15, 53190), (Start: 33 @53265 has 21 MA's), (39, 53280), (53, 53364), (59, 53388), (71, 53424), (79, 53451), (92, 53511), (118, 53598),

Gene: Ximenita_92 Start: 56063, Stop: 56440, Start Num: 25

Candidate Starts for Ximenita_92:

(Start: 25 @56063 has 20 MA's), (Start: 29 @56069 has 9 MA's), (34, 56075), (39, 56090), (49, 56138), (52, 56171), (58, 56195), (80, 56264), (92, 56318), (111, 56369),

Gene: YoureAdopted_85 Start: 54928, Stop: 55308, Start Num: 26

Candidate Starts for YoureAdopted_85:

(Start: 25 @54925 has 20 MA's), (Start: 26 @54928 has 77 MA's), (Start: 30 @54931 has 2 MA's), (37, 54955), (52, 55042), (53, 55045), (79, 55123), (92, 55183), (109, 55231), (128, 55294), (129, 55300),

Gene: Yuna_89 Start: 57082, Stop: 57462, Start Num: 26

Candidate Starts for Yuna_89:

(Start: 25 @57079 has 20 MA's), (Start: 26 @57082 has 77 MA's), (71, 57244), (79, 57271), (92, 57331), (93, 57334), (110, 57385),

Gene: Yunkel11_91 Start: 55781, Stop: 56143, Start Num: 26

Candidate Starts for Yunkel11_91:

(10, 55664), (Start: 25 @55778 has 20 MA's), (Start: 26 @55781 has 77 MA's), (39, 55799), (49, 55847), (57, 55901), (62, 55913), (71, 55943), (87, 55991), (94, 56030), (96, 56039), (109, 56075),

Gene: Zabiza_82 Start: 51481, Stop: 51864, Start Num: 26

Candidate Starts for Zabiza_82:

(Start: 25 @51478 has 20 MA's), (Start: 26 @51481 has 77 MA's), (Start: 30 @51484 has 2 MA's), (37, 51508), (39, 51514), (52, 51595), (53, 51598), (67, 51643), (76, 51673), (92, 51736), (109, 51787), (128, 51850), (129, 51856),

Gene: Zavala_88 Start: 55393, Stop: 55773, Start Num: 26

Candidate Starts for Zavala_88:

(Start: 25 @55390 has 20 MA's), (Start: 26 @55393 has 77 MA's), (Start: 30 @55396 has 2 MA's), (37, 55420), (52, 55507), (53, 55510), (79, 55588), (92, 55648), (109, 55696), (128, 55759), (129, 55765),