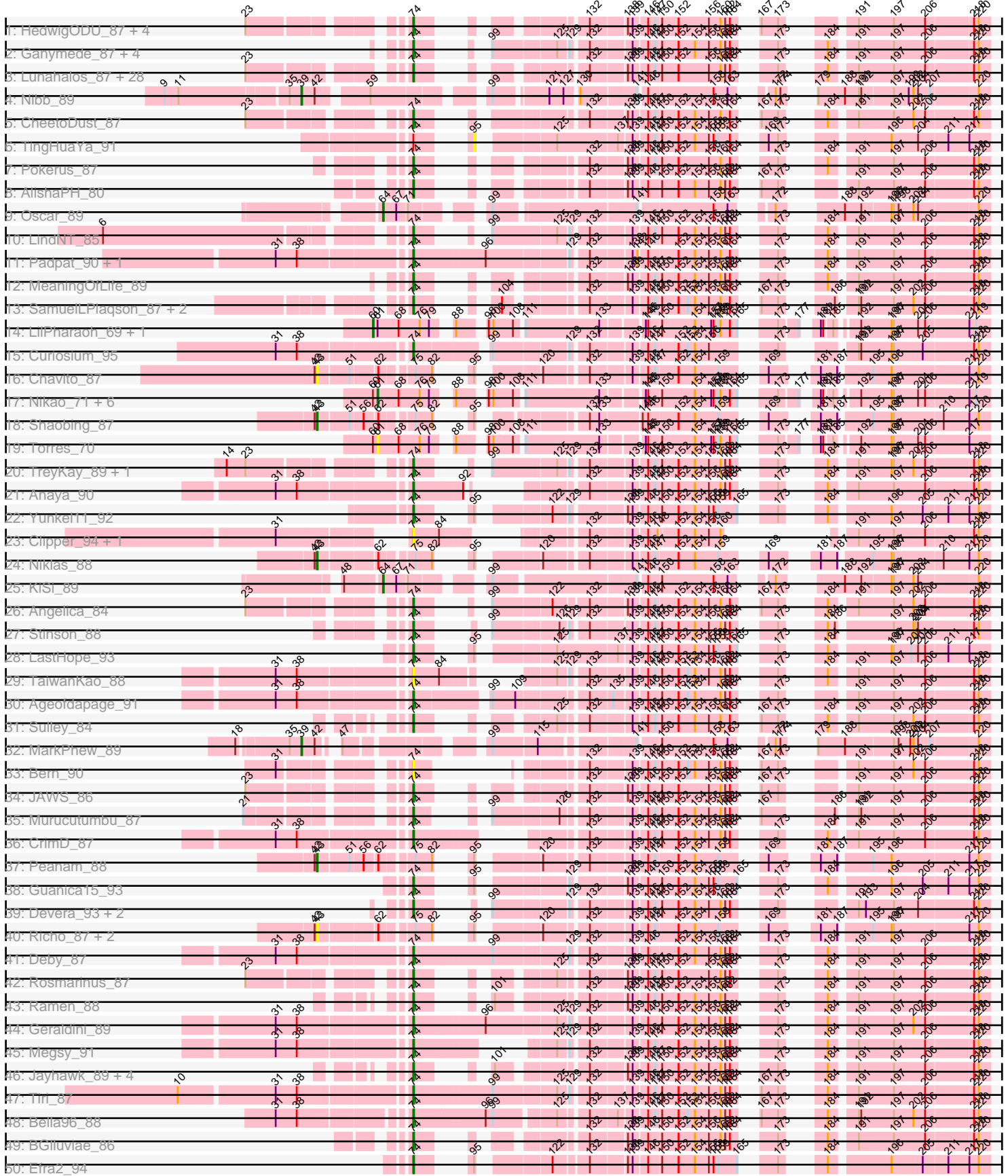
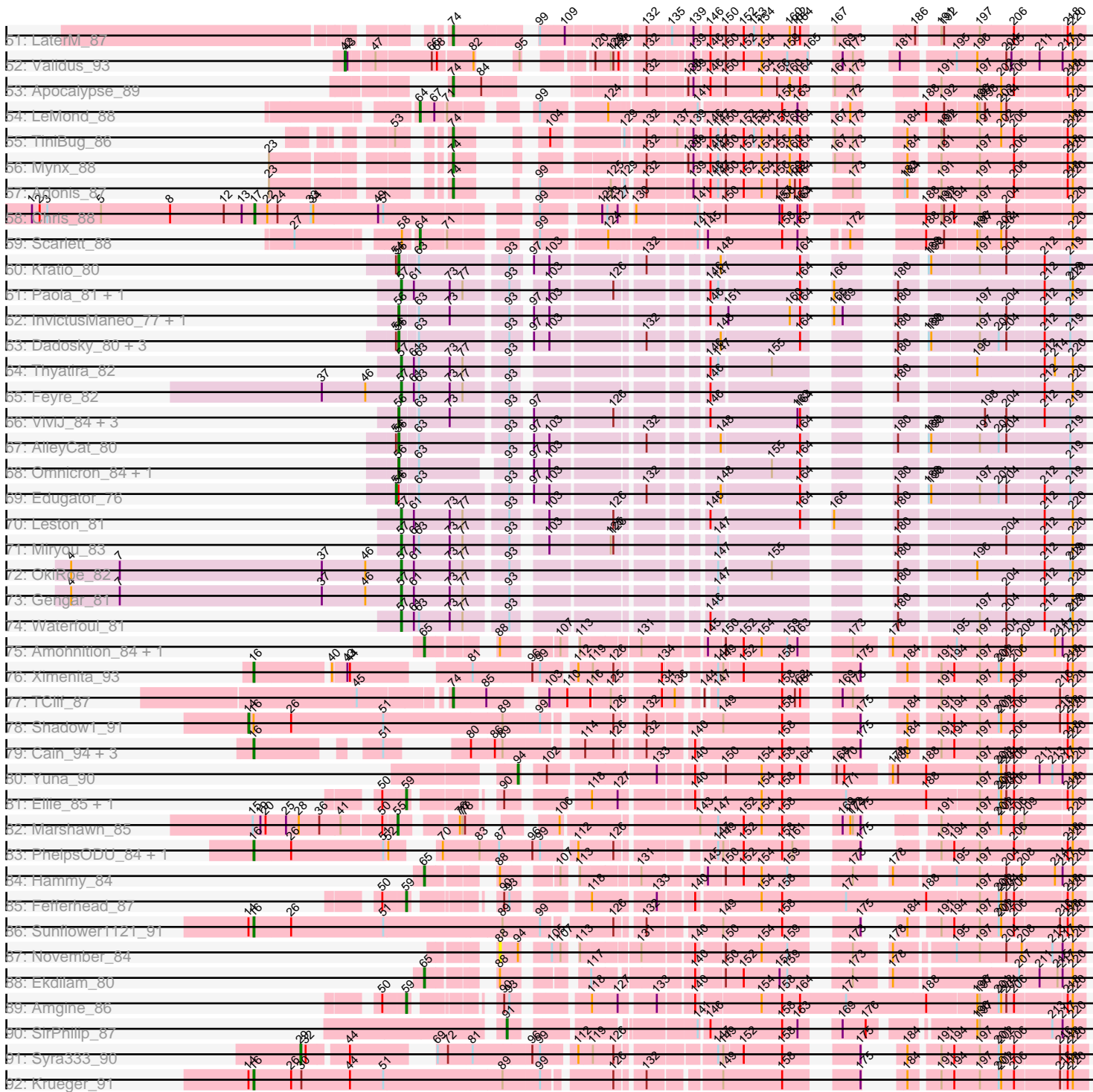


Pham 214039



Pham 214039



Note: Tracks are now grouped by subcluster and scaled. Switching in subcluster is indicated by changes in track color. Track scale is now set by default to display the region 30 bp upstream of start 1 to 30 bp downstream of the last possible start. If this default region is judged to be packed too tightly with annotated starts, the track will be further scaled to only show that region of the ORF with annotated starts. This action will be indicated by adding "Zoomed" to the title. For starts, yellow indicates the location of called starts comprised solely of Glimmer/GeneMark auto-annotations, green indicates the location of called starts with at least 1 manual gene annotation.

Pham 214039 Report

This analysis was run 02/22/25 on database version 588.

Pham number 214039 has 163 members, 16 are drafts.

Phages represented in each track:

- Track 1 : HedwigODU_87, Adephagia_86, ActinUp_88, Zabiza_83, Veliki_88
- Track 2 : Ganymede_87, Beezoo_90, QuincyRose_85, YoureAdopted_86, Zavala_89
- Track 3 : Lunahalos_87, ShiaSurprise_88, BEEST_87, Homura_86, CallaLilly_88, Spock_87, Capricorn_87, Tachez_87, Twitch_87, Piatt_86, Durfee_87, Peel_87, Dalmuri_87, Topper_87, Hyperbowlee_86, CaseJules_89, Jarvi_87, Jeckyll_87, Padfoot_87, Llorens_87, BaghaKamala_86, Joy99_88, Boiii_87, Belladonna_87, Atiba_88, Blizzard_87, Inky_87, Asayake_87, CREW_86
- Track 4 : Nibb_89
- Track 5 : CheetoDust_87
- Track 6 : TingHuaYa_91
- Track 7 : Pokerus_87
- Track 8 : AlishaPH_80
- Track 9 : Oscar_89
- Track 10 : LindNT_85
- Track 11 : Padpat_90, Emerson_89
- Track 12 : MeaningOfLife_89
- Track 13 : SamuelLPlaqson_87, DrHayes_87, Urkel_87
- Track 14 : LilPharaoh_69, Binglebops_68
- Track 15 : Curiosium_95
- Track 16 : Chavito_87
- Track 17 : Nikao_71, SgtBeansprout_69, Nutello_68, Teejan_70, Enkosi_70, Mdavu_69, Amelie_68
- Track 18 : Shaobing_87
- Track 19 : Torres_70
- Track 20 : TreyKay_89, Prithvi_89
- Track 21 : Anaya_90
- Track 22 : Yunkel11_92
- Track 23 : Clipper_94, MacKat_84
- Track 24 : Niklas_88
- Track 25 : KiSi_89
- Track 26 : Angelica_84
- Track 27 : Stinson_88
- Track 28 : LastHope_93
- Track 29 : TaiwanKao_88
- Track 30 : Ageofdapage_91
- Track 31 : Sulley_84

- Track 32 : MarkPhew_89
- Track 33 : Bern_90
- Track 34 : JAWS_86
- Track 35 : Murucutumbu_87
- Track 36 : CrimD_87
- Track 37 : Peanam_88
- Track 38 : Guanica15_93
- Track 39 : Devera_93, Illumine_91, Dole_90
- Track 40 : Richo_87, McMater_87, Dartin_87
- Track 41 : Deby_87
- Track 42 : Rosmarinus_87
- Track 43 : Ramen_88
- Track 44 : Geraldini_89
- Track 45 : Megsy_91
- Track 46 : Jayhawk_89, Rapunzel97_89, BarrelRoll_87, TruffulaTree_89, Slimphazie_89
- Track 47 : Tiri_87
- Track 48 : Bella96_88
- Track 49 : BGIlluviae_86
- Track 50 : Efra2_94
- Track 51 : LaterM_87
- Track 52 : Validus_93
- Track 53 : Apocalypse_89
- Track 54 : LeMond_88
- Track 55 : TiniBug_86
- Track 56 : Mynx_88
- Track 57 : Adonis_87
- Track 58 : Chris_88
- Track 59 : Scarlett_88
- Track 60 : Kratio_80
- Track 61 : Paola_81, Guillsminger_82
- Track 62 : InvictusManeo_77, Agent47_79
- Track 63 : Dadosky_80, Psycho_78, Neighly_80, Larva_79
- Track 64 : Thyatira_82
- Track 65 : Feyre_82
- Track 66 : ViviJ_84, SoSeph_79, Collard_77, Heftyboy_79
- Track 67 : AlleyCat_80
- Track 68 : Omnicron_84, Rando14_81
- Track 69 : Edugator_76
- Track 70 : Leston_81
- Track 71 : Miryou_83
- Track 72 : OkiRoe_82
- Track 73 : Gengar_81
- Track 74 : Waterfoul_81
- Track 75 : Amohnition_84, DARTH_P_84
- Track 76 : Ximenita_93
- Track 77 : TClif_87
- Track 78 : Shadow1_91
- Track 79 : Cain_94, Bryler_86, Phrank_94, Tierra_94
- Track 80 : Yuna_90
- Track 81 : Ellie_85, Applecrisp_86
- Track 82 : Marshawn_85
- Track 83 : PhelpsODU_84, Unicorn_94

- Track 84 : Hammy_84
- Track 85 : Fefferhead_87
- Track 86 : Sunflower1121_91
- Track 87 : November_84
- Track 88 : Ekdilam_80
- Track 89 : Amgine_86
- Track 90 : SirPhilip_87
- Track 91 : Syra333_90
- Track 92 : Krueger_91

Summary of Final Annotations (See graph section above for start numbers):

The start number called the most often in the published annotations is 74, it was called in 85 of the 147 non-draft genes in the pham.

Genes that call this "Most Annotated" start:

- ActinUp_88, Adephegia_86, Adonis_87, Ageofdapage_91, AlishaPH_80, Anaya_90, Angelica_84, Apocalypse_89, Asayake_87, Atiba_88, BEEST_87, BGlluviae_86, BaghaKamala_86, BarrelRoll_87, Beezoo_90, Bella96_88, Belladonna_87, Bern_90, Blizzard_87, Boiiii_87, CREW_86, CallaLilly_88, Capricorn_87, CaseJules_89, CheetoDust_87, Clipper_94, CrimD_87, Curiosium_95, Dalmuri_87, Deby_87, Devera_93, Dole_90, DrHayes_87, Durfee_87, Efra2_94, Emerson_89, Ganymede_87, Geraldini_89, Guanica15_93, HedwigODU_87, Homura_86, Hyperbowlee_86, Illumine_91, Inky_87, JAWS_86, Jarvi_87, Jayhawk_89, Jeckyll_87, Joy99_88, LastHope_93, LaterM_87, LindNT_85, Llorens_87, Lunahalos_87, MacKat_84, MeaningOfLife_89, Megsy_91, Murucutumbu_87, Mynx_88, Padfoot_87, Padpat_90, Peel_87, Piatt_86, Pokerus_87, Prithvi_89, QuincyRose_85, Ramen_88, Rapunzel97_89, Rosmarinus_87, SamuelLPlaqson_87, ShiaSurprise_88, Slimphazie_89, Spock_87, Stinson_88, Sulley_84, TClif_87, Tachez_87, TaiwanKao_88, TiniBug_86, Tiri_87, Topper_87, TreyKay_89, TruffulaTree_89, Twitch_87, Urkel_87, Veliki_88, YoureAdopted_86, Yunkel11_92, Zabiza_83, Zavala_89,

Genes that have the "Most Annotated" start but do not call it:

- TingHuaYa_91,

Genes that do not have the "Most Annotated" start:

- Agent47_79, AlleyCat_80, Amelie_68, Amgine_86, Amohnition_84, Applecrisp_86, Biglebops_68, Bryler_86, Cain_94, Chavito_87, Chris_88, Collard_77, Dadosky_80, DARTH_P_84, Dartin_87, Edugator_76, Ekdilam_80, Ellie_85, Enkosi_70, Fefferhead_87, Feyre_82, Gengar_81, Guillsminger_82, Hammy_84, Heftyboy_79, InvictusManeo_77, KiSi_89, Kratio_80, Krueger_91, Larva_79, LeMond_88, Leston_81, LilPharaoh_69, MarkPhew_89, Marshawn_85, McMater_87, Mdavu_69, Miryou_83, Neighly_80, Nibb_89, Nikao_71, Niklas_88, November_84, Nutello_68, OkiRoe_82, Omnicron_84, Oscar_89, Paola_81, Peanam_88, PhelpsODU_84, Phrank_94, Psycho_78, Rando14_81, Richo_87, Scarlett_88, SgtBeansprout_69, Shadow1_91, Shaobing_87, SirPhilip_87, SoSeph_79, Sunflower1121_91, Syra333_90, Teejan_70, Thyatira_82, Tierra_94, Torres_70, Unicorn_94, Validus_93, ViviJ_84, Waterfoul_81, Ximenita_93, Yuna_90,

Summary by start number:

Start 14:

- Found in 5 of 163 (3.1%) of genes in pham
- Manual Annotations of this start: 1 of 147
- Called 20.0% of time when present
- Phage (with cluster) where this start called: Shadow1_91 (K6),

Start 16:

- Found in 10 of 163 (6.1%) of genes in pham
- Manual Annotations of this start: 9 of 147
- Called 90.0% of time when present
- Phage (with cluster) where this start called: Bryler_86 (K6), Cain_94 (K6), Krueger_91 (K6), PhelpsODU_84 (K6), Phrank_94 (K6), Sunflower1121_91 (K6), Tierra_94 (K6), Unicorn_94 (K6), Ximenita_93 (K6),

Start 17:

- Found in 1 of 163 (0.6%) of genes in pham
- Manual Annotations of this start: 1 of 147
- Called 100.0% of time when present
- Phage (with cluster) where this start called: Chris_88 (K1),

Start 29:

- Found in 1 of 163 (0.6%) of genes in pham
- Manual Annotations of this start: 1 of 147
- Called 100.0% of time when present
- Phage (with cluster) where this start called: Syra333_90 (K6),

Start 39:

- Found in 2 of 163 (1.2%) of genes in pham
- Manual Annotations of this start: 2 of 147
- Called 100.0% of time when present
- Phage (with cluster) where this start called: MarkPhew_89 (K1), Nibb_89 (K1),

Start 42:

- Found in 10 of 163 (6.1%) of genes in pham
- Manual Annotations of this start: 1 of 147
- Called 10.0% of time when present
- Phage (with cluster) where this start called: Validus_93 (K1),

Start 43:

- Found in 9 of 163 (5.5%) of genes in pham
- Manual Annotations of this start: 3 of 147
- Called 77.8% of time when present
- Phage (with cluster) where this start called: Chavito_87 (K1), Dartin_87 (K1), McMater_87 (K1), Niklas_88 (K1), Peanam_88 (K1), Richo_87 (K1), Shaobing_87 (K1),

Start 54:

- Found in 7 of 163 (4.3%) of genes in pham
- Manual Annotations of this start: 1 of 147
- Called 14.3% of time when present
- Phage (with cluster) where this start called: Edugator_76 (K5),

Start 55:

- Found in 1 of 163 (0.6%) of genes in pham
- Manual Annotations of this start: 1 of 147
- Called 100.0% of time when present
- Phage (with cluster) where this start called: Marshawn_85 (K6),

Start 56:

- Found in 17 of 163 (10.4%) of genes in pham
- Manual Annotations of this start: 12 of 147
- Called 82.4% of time when present
- Phage (with cluster) where this start called: Agent47_79 (K5), AlleyCat_80 (K5), Collard_77 (K5), Dadosky_80 (K5), Heftyboy_79 (K5), InvictusManeo_77 (K5), Kratio_80 (K5), Larva_79 (K5), Neighly_80 (K3), Omnicron_84 (K5), Psycho_78 (K5), Rando14_81 (K5), SoSeph_79 (K5), ViviJ_84 (K5),

Start 57:

- Found in 9 of 163 (5.5%) of genes in pham
- Manual Annotations of this start: 9 of 147
- Called 100.0% of time when present
- Phage (with cluster) where this start called: Feyre_82 (K5), Gengar_81 (K5), Guillsminger_82 (K5), Leston_81 (K5), Miryou_83 (K5), OkiRoe_82 (K5), Paola_81 (K5), Thyatira_82 (K5), Waterfoul_81 (K5),

Start 59:

- Found in 5 of 163 (3.1%) of genes in pham
- Manual Annotations of this start: 3 of 147
- Called 80.0% of time when present
- Phage (with cluster) where this start called: Amgine_86 (K6), Applecrisp_86 (K6), Ellie_85 (K6), Fefferhead_87 (K6),

Start 60:

- Found in 10 of 163 (6.1%) of genes in pham
- Manual Annotations of this start: 2 of 147
- Called 20.0% of time when present
- Phage (with cluster) where this start called: Biglebops_68 (K1), LilPharaoh_69 (K1),

Start 61:

- Found in 19 of 163 (11.7%) of genes in pham
- Manual Annotations of this start: 6 of 147
- Called 42.1% of time when present
- Phage (with cluster) where this start called: Amelie_68 (K1), Enkosi_70 (K1), Mdavu_69 (K1), Nikao_71 (K1), Nutello_68 (K1), SgtBeansprout_69 (K1), Teejan_70 (K1), Torres_70 (K1),

Start 64:

- Found in 4 of 163 (2.5%) of genes in pham
- Manual Annotations of this start: 4 of 147
- Called 100.0% of time when present
- Phage (with cluster) where this start called: KiSi_89 (K1), LeMond_88 (K1), Oscar_89 (K1), Scarlett_88 (K1),

Start 65:

- Found in 4 of 163 (2.5%) of genes in pham
- Manual Annotations of this start: 4 of 147
- Called 100.0% of time when present
- Phage (with cluster) where this start called: Amohnition_84 (K6), DarthP_84 (K6), Ekdilam_80 (K6), Hammy_84 (K6),

Start 74:

- Found in 91 of 163 (55.8%) of genes in pham
- Manual Annotations of this start: 85 of 147
- Called 98.9% of time when present
- Phage (with cluster) where this start called: ActinUp_88 (K1), Adephagia_86 (K1), Adonis_87 (K1), Ageofdapage_91 (K1), AlishaPH_80 (K1), Anaya_90 (K1), Angelica_84 (K1), Apocalypse_89 (K1), Asayake_87 (K1), Atiba_88 (K1), BEEST_87 (K1), BGlluviae_86 (K1), BaghaKamala_86 (K1), BarrelRoll_87 (K1), Beezoo_90 (K1), Bella96_88 (K1), Belladonna_87 (K1), Bern_90 (K1), Blizzard_87 (K1), Boiiii_87 (K1), CREW_86 (K1), CallaLilly_88 (K1), Capricorn_87 (K1), CaseJules_89 (K1), CheetoDust_87 (K1), Clipper_94 (K1), CrimD_87 (K1), Curiosium_95 (K1), Dalmuri_87 (K1), Deby_87 (K1), Devera_93 (K1), Dole_90 (K1), DrHayes_87 (K1), Durfee_87 (K1), Efra2_94 (K1), Emerson_89 (K1), Ganymede_87 (K1), Geraldini_89 (K1), Guanica15_93 (K1), HedwigODU_87 (K1), Homura_86 (K1), Hyperbowlee_86 (K1), Illumine_91 (K1), Inky_87 (K1), JAWS_86 (K1), Jarvi_87 (K1), Jayhawk_89 (K1), Jeckyll_87 (K1), Joy99_88 (K1), LastHope_93 (K1), LaterM_87 (K1), LindNT_85 (K1), Llorens_87 (K1), Lunahalos_87 (K1), MacKat_84 (K1), MeaningOfLife_89 (K1), Megsy_91 (K1), Murucutumbu_87 (K1), Mynx_88 (K1), Padfoot_87 (K1), Padpat_90 (K1), Peel_87 (K1), Piatt_86 (K1), Pokerus_87 (K1), Prithvi_89 (K1), QuincyRose_85 (K1), Ramen_88 (K1), Rapunzel97_89 (K1), Rosmarinus_87 (K1), SamuelLPlaqson_87 (K1), ShiaSurprise_88 (K1), Slimphazie_89 (K1), Spock_87 (K1), Stinson_88 (K1), Sulley_84 (K1), TClif_87 (K6), Tachez_87 (K1), TaiwanKao_88 (K1), TiniBug_86 (K1), Tiri_87 (K1), Topper_87 (K1), TreyKay_89 (K1), TruffulaTree_89 (K1), Twitch_87 (K1), Urkel_87 (K1), Veliki_88 (K1), YoureAdopted_86 (K1), Yunkel11_92 (K1), Zabiza_83 (K1), Zavala_89 (K1),

Start 88:

- Found in 15 of 163 (9.2%) of genes in pham
- No Manual Annotations of this start.
- Called 6.7% of time when present
- Phage (with cluster) where this start called: November_84 (K6),

Start 91:

- Found in 1 of 163 (0.6%) of genes in pham
- Manual Annotations of this start: 1 of 147
- Called 100.0% of time when present
- Phage (with cluster) where this start called: SirPhilip_87 (K6),

Start 94:

- Found in 2 of 163 (1.2%) of genes in pham
- Manual Annotations of this start: 1 of 147
- Called 50.0% of time when present
- Phage (with cluster) where this start called: Yuna_90 (K6),

Start 95:

- Found in 13 of 163 (8.0%) of genes in pham
- No Manual Annotations of this start.

- Called 7.7% of time when present
- Phage (with cluster) where this start called: TingHuaYa_91 (K1),

Summary by clusters:

There are 4 clusters represented in this pham: K3, K1, K6, K5,

Info for manual annotations of cluster K1:

- Start number 17 was manually annotated 1 time for cluster K1.
- Start number 39 was manually annotated 2 times for cluster K1.
- Start number 42 was manually annotated 1 time for cluster K1.
- Start number 43 was manually annotated 3 times for cluster K1.
- Start number 60 was manually annotated 2 times for cluster K1.
- Start number 61 was manually annotated 6 times for cluster K1.
- Start number 64 was manually annotated 4 times for cluster K1.
- Start number 74 was manually annotated 84 times for cluster K1.

Info for manual annotations of cluster K5:

- Start number 54 was manually annotated 1 time for cluster K5.
- Start number 56 was manually annotated 12 times for cluster K5.
- Start number 57 was manually annotated 9 times for cluster K5.

Info for manual annotations of cluster K6:

- Start number 14 was manually annotated 1 time for cluster K6.
- Start number 16 was manually annotated 9 times for cluster K6.
- Start number 29 was manually annotated 1 time for cluster K6.
- Start number 55 was manually annotated 1 time for cluster K6.
- Start number 59 was manually annotated 3 times for cluster K6.
- Start number 65 was manually annotated 4 times for cluster K6.
- Start number 74 was manually annotated 1 time for cluster K6.
- Start number 91 was manually annotated 1 time for cluster K6.
- Start number 94 was manually annotated 1 time for cluster K6.

Gene Information:

Gene: ActinUp_88 Start: 55559, Stop: 56098, Start Num: 74

Candidate Starts for ActinUp_88:

(23, 55403), (Start: 74 @55559 has 85 MA's), (132, 55688), (138, 55730), (139, 55736), (146, 55751), (147, 55760), (150, 55766), (152, 55787), (156, 55826), (160, 55841), (162, 55847), (164, 55853), (167, 55865), (173, 55886), (191, 55937), (197, 55982), (206, 56021), (218, 56078), (220, 56084),

Gene: Adephagia_86 Start: 55402, Stop: 55941, Start Num: 74

Candidate Starts for Adephagia_86:

(23, 55246), (Start: 74 @55402 has 85 MA's), (132, 55531), (138, 55573), (139, 55579), (146, 55594), (147, 55603), (150, 55609), (152, 55630), (156, 55669), (160, 55684), (162, 55690), (164, 55696), (167, 55708), (173, 55729), (191, 55780), (197, 55825), (206, 55864), (218, 55921), (220, 55927),

Gene: Adonis_87 Start: 55591, Stop: 56139, Start Num: 74

Candidate Starts for Adonis_87:

(23, 55435), (Start: 74 @55591 has 85 MA's), (99, 55624), (125, 55699), (129, 55711), (132, 55729), (139, 55777), (146, 55792), (147, 55801), (150, 55807), (152, 55828), (154, 55849), (156, 55867), (160, 55882), (162, 55888), (164, 55894), (173, 55927), (183, 55948), (184, 55951), (191, 55978), (197, 56023), (206, 56062), (218, 56119), (220, 56125),

Gene: Agent47_79 Start: 51751, Stop: 52398, Start Num: 56

Candidate Starts for Agent47_79:

(Start: 56 @51751 has 12 MA's), (63, 51769), (73, 51805), (93, 51865), (97, 51880), (103, 51898), (146, 52045), (151, 52066), (160, 52138), (164, 52150), (166, 52162), (169, 52171), (180, 52198), (197, 52279), (204, 52309), (212, 52351), (219, 52381),

Gene: Ageofdapage_91 Start: 56356, Stop: 56949, Start Num: 74

Candidate Starts for Ageofdapage_91:

(31, 56203), (38, 56230), (Start: 74 @56356 has 85 MA's), (99, 56434), (109, 56461), (132, 56539), (135, 56566), (139, 56587), (146, 56602), (150, 56617), (152, 56638), (153, 56650), (154, 56659), (160, 56692), (162, 56698), (164, 56704), (173, 56737), (191, 56788), (197, 56833), (206, 56872), (218, 56929), (220, 56935),

Gene: AlishaPH_80 Start: 52788, Stop: 53327, Start Num: 74

Candidate Starts for AlishaPH_80:

(Start: 74 @52788 has 85 MA's), (132, 52917), (138, 52959), (139, 52965), (146, 52980), (150, 52995), (152, 53016), (154, 53037), (156, 53055), (160, 53070), (162, 53076), (164, 53082), (167, 53094), (173, 53115), (191, 53166), (197, 53211), (206, 53250), (218, 53307), (220, 53313),

Gene: AlleyCat_80 Start: 52608, Stop: 53252, Start Num: 56

Candidate Starts for AlleyCat_80:

(Start: 54 @52605 has 1 MA's), (Start: 56 @52608 has 12 MA's), (63, 52626), (93, 52722), (97, 52737), (103, 52755), (132, 52851), (148, 52914), (164, 53004), (180, 53052), (189, 53076), (190, 53079), (197, 53133), (201, 53154), (204, 53163), (219, 53235),

Gene: Amelie_68 Start: 51228, Stop: 51872, Start Num: 61

Candidate Starts for Amelie_68:

(Start: 60 @51222 has 2 MA's), (Start: 61 @51228 has 6 MA's), (68, 51255), (76, 51282), (79, 51294), (88, 51309), (98, 51333), (100, 51339), (108, 51363), (111, 51372), (133, 51462), (145, 51507), (146, 51510), (150, 51525), (154, 51567), (157, 51588), (158, 51591), (159, 51597), (160, 51600), (164, 51612), (165, 51621), (173, 51645), (177, 51666), (181, 51678), (182, 51681), (185, 51690), (192, 51711), (196, 51750), (197, 51753), (204, 51783), (206, 51792), (217, 51846), (219, 51855),

Gene: Amgine_86 Start: 56691, Stop: 57377, Start Num: 59

Candidate Starts for Amgine_86:

(50, 56667), (Start: 59 @56691 has 3 MA's), (90, 56763), (93, 56769), (118, 56838), (127, 56868), (133, 56904), (140, 56940), (154, 57009), (158, 57033), (164, 57054), (171, 57108), (188, 57201), (196, 57258), (197, 57261), (201, 57282), (202, 57285), (204, 57291), (206, 57300), (218, 57357), (220, 57363),

Gene: Amohnition_84 Start: 55743, Stop: 56357, Start Num: 65

Candidate Starts for Amohnition_84:

(Start: 65 @55743 has 4 MA's), (88, 55800), (107, 55848), (113, 55857), (131, 55917), (145, 55980), (150, 55998), (152, 56019), (154, 56040), (159, 56070), (163, 56082), (173, 56118), (178, 56148), (195, 56211), (197, 56238), (204, 56268), (208, 56286), (214, 56322), (217, 56331), (220, 56343),

Gene: Anaya_90 Start: 56620, Stop: 57162, Start Num: 74

Candidate Starts for Anaya_90:

(31, 56467), (38, 56494), (Start: 74 @56620 has 85 MA's), (92, 56680), (132, 56752), (139, 56800), (146, 56815), (147, 56824), (150, 56830), (152, 56851), (154, 56872), (156, 56890), (160, 56905), (162, 56911), (164, 56917), (173, 56950), (184, 56974), (191, 57001), (197, 57046), (206, 57085), (218, 57142), (220, 57148),

Gene: Angelica_84 Start: 54828, Stop: 55379, Start Num: 74

Candidate Starts for Angelica_84:

(23, 54672), (Start: 74 @54828 has 85 MA's), (99, 54861), (122, 54930), (132, 54969), (138, 55011), (139, 55017), (146, 55032), (147, 55041), (152, 55068), (154, 55089), (156, 55107), (160, 55122), (164, 55134), (167, 55146), (173, 55167), (184, 55191), (191, 55218), (197, 55263), (202, 55287), (206, 55302), (218, 55359), (220, 55365),

Gene: Apocalypse_89 Start: 55750, Stop: 56301, Start Num: 74

Candidate Starts for Apocalypse_89:

(Start: 74 @55750 has 85 MA's), (84, 55783), (132, 55891), (138, 55933), (139, 55939), (146, 55954), (150, 55969), (154, 56011), (156, 56029), (160, 56044), (164, 56056), (167, 56068), (173, 56089), (191, 56140), (197, 56185), (202, 56209), (206, 56224), (218, 56281), (220, 56287),

Gene: Applecrisp_86 Start: 55868, Stop: 56557, Start Num: 59

Candidate Starts for Applecrisp_86:

(50, 55844), (Start: 59 @55868 has 3 MA's), (90, 55943), (118, 56018), (127, 56048), (140, 56120), (154, 56189), (158, 56213), (171, 56288), (188, 56381), (197, 56441), (201, 56462), (202, 56465), (204, 56471), (206, 56480), (218, 56537), (220, 56543),

Gene: Asayake_87 Start: 55717, Stop: 56256, Start Num: 74

Candidate Starts for Asayake_87:

(23, 55561), (Start: 74 @55717 has 85 MA's), (132, 55846), (138, 55888), (139, 55894), (146, 55909), (147, 55918), (150, 55924), (152, 55945), (156, 55984), (160, 55999), (162, 56005), (164, 56011), (173, 56044), (184, 56068), (191, 56095), (197, 56140), (206, 56179), (218, 56236), (220, 56242),

Gene: Atiba_88 Start: 55365, Stop: 55904, Start Num: 74

Candidate Starts for Atiba_88:

(23, 55209), (Start: 74 @55365 has 85 MA's), (132, 55494), (138, 55536), (139, 55542), (146, 55557), (147, 55566), (150, 55572), (152, 55593), (156, 55632), (160, 55647), (162, 55653), (164, 55659), (173, 55692), (184, 55716), (191, 55743), (197, 55788), (206, 55827), (218, 55884), (220, 55890),

Gene: BEEST_87 Start: 55717, Stop: 56256, Start Num: 74

Candidate Starts for BEEST_87:

(23, 55561), (Start: 74 @55717 has 85 MA's), (132, 55846), (138, 55888), (139, 55894), (146, 55909), (147, 55918), (150, 55924), (152, 55945), (156, 55984), (160, 55999), (162, 56005), (164, 56011), (173, 56044), (184, 56068), (191, 56095), (197, 56140), (206, 56179), (218, 56236), (220, 56242),

Gene: BGlluviae_86 Start: 55097, Stop: 55636, Start Num: 74

Candidate Starts for BGlluviae_86:

(Start: 74 @55097 has 85 MA's), (132, 55226), (138, 55268), (139, 55274), (146, 55289), (150, 55304), (152, 55325), (154, 55346), (156, 55364), (160, 55379), (162, 55385), (164, 55391), (173, 55424), (184, 55448), (191, 55475), (197, 55520), (206, 55559), (218, 55616), (220, 55622),

Gene: BaghaKamala_86 Start: 54945, Stop: 55484, Start Num: 74

Candidate Starts for BaghaKamala_86:

(23, 54789), (Start: 74 @54945 has 85 MA's), (132, 55074), (138, 55116), (139, 55122), (146, 55137), (147, 55146), (150, 55152), (152, 55173), (156, 55212), (160, 55227), (162, 55233), (164, 55239), (173, 55272), (184, 55296), (191, 55323), (197, 55368), (206, 55407), (218, 55464), (220, 55470),

Gene: BarrelRoll_87 Start: 55476, Stop: 56015, Start Num: 74

Candidate Starts for BarrelRoll_87:

(Start: 74 @55476 has 85 MA's), (101, 55515), (132, 55605), (138, 55647), (139, 55653), (146, 55668), (147, 55677), (150, 55683), (152, 55704), (154, 55725), (156, 55743), (160, 55758), (162, 55764), (164, 55770), (173, 55803), (184, 55827), (191, 55854), (197, 55899), (206, 55938), (218, 55995), (220, 56001),

Gene: Beezoo_90 Start: 56297, Stop: 56845, Start Num: 74

Candidate Starts for Beezoo_90:

(Start: 74 @56297 has 85 MA's), (99, 56330), (125, 56405), (129, 56417), (132, 56435), (139, 56483), (146, 56498), (147, 56507), (150, 56513), (152, 56534), (154, 56555), (156, 56573), (160, 56588), (162, 56594), (164, 56600), (173, 56633), (184, 56657), (191, 56684), (197, 56729), (206, 56768), (218, 56825), (220, 56831),

Gene: Bella96_88 Start: 55904, Stop: 56509, Start Num: 74

Candidate Starts for Bella96_88:

(31, 55757), (38, 55784), (Start: 74 @55904 has 85 MA's), (96, 55991), (99, 56000), (125, 56069), (132, 56099), (137, 56132), (139, 56147), (146, 56162), (147, 56171), (150, 56177), (152, 56198), (153, 56210), (154, 56219), (156, 56237), (160, 56252), (162, 56258), (164, 56264), (167, 56276), (173, 56297), (184, 56321), (191, 56348), (192, 56351), (197, 56393), (202, 56417), (206, 56432), (218, 56489), (220, 56495),

Gene: Belladonna_87 Start: 55520, Stop: 56059, Start Num: 74

Candidate Starts for Belladonna_87:

(23, 55364), (Start: 74 @55520 has 85 MA's), (132, 55649), (138, 55691), (139, 55697), (146, 55712), (147, 55721), (150, 55727), (152, 55748), (156, 55787), (160, 55802), (162, 55808), (164, 55814), (173, 55847), (184, 55871), (191, 55898), (197, 55943), (206, 55982), (218, 56039), (220, 56045),

Gene: Bern_90 Start: 54011, Stop: 54514, Start Num: 74

Candidate Starts for Bern_90:

(31, 53894), (Start: 74 @54011 has 85 MA's), (132, 54104), (139, 54152), (146, 54167), (147, 54176), (150, 54182), (152, 54203), (153, 54215), (154, 54224), (156, 54242), (160, 54257), (162, 54263), (164, 54269), (167, 54281), (173, 54302), (191, 54353), (197, 54398), (202, 54422), (206, 54437), (218, 54494), (220, 54500),

Gene: Biglebops_68 Start: 51237, Stop: 51887, Start Num: 60

Candidate Starts for Biglebops_68:

(Start: 60 @51237 has 2 MA's), (Start: 61 @51243 has 6 MA's), (68, 51270), (76, 51297), (79, 51309), (88, 51324), (98, 51348), (100, 51354), (108, 51378), (111, 51387), (133, 51477), (145, 51522), (146, 51525), (150, 51540), (154, 51582), (157, 51603), (158, 51606), (159, 51612), (160, 51615), (164, 51627), (165, 51636), (173, 51660), (177, 51681), (181, 51693), (182, 51696), (185, 51705), (192, 51726), (196, 51765), (197, 51768), (204, 51798), (206, 51807), (217, 51861), (219, 51870),

Gene: Blizzard_87 Start: 55717, Stop: 56256, Start Num: 74

Candidate Starts for Blizzard_87:

(23, 55561), (Start: 74 @55717 has 85 MA's), (132, 55846), (138, 55888), (139, 55894), (146, 55909), (147, 55918), (150, 55924), (152, 55945), (156, 55984), (160, 55999), (162, 56005), (164, 56011), (173, 56044), (184, 56068), (191, 56095), (197, 56140), (206, 56179), (218, 56236), (220, 56242),

Gene: Boiiii_87 Start: 55719, Stop: 56258, Start Num: 74

Candidate Starts for Boiiii_87:

(23, 55563), (Start: 74 @55719 has 85 MA's), (132, 55848), (138, 55890), (139, 55896), (146, 55911), (147, 55920), (150, 55926), (152, 55947), (156, 55986), (160, 56001), (162, 56007), (164, 56013), (173, 56046), (184, 56070), (191, 56097), (197, 56142), (206, 56181), (218, 56238), (220, 56244),

Gene: Bryler_86 Start: 53452, Stop: 54183, Start Num: 16

Candidate Starts for Bryler_86:

(Start: 16 @53452 has 9 MA's), (51, 53560), (80, 53599), (86, 53626), (89, 53635), (114, 53713), (126, 53746), (132, 53773), (140, 53818), (158, 53914), (175, 53977), (184, 53989), (191, 54019), (194, 54034), (197, 54064), (206, 54103), (218, 54160), (220, 54166),

Gene: CREW_86 Start: 55520, Stop: 56059, Start Num: 74

Candidate Starts for CREW_86:

(23, 55364), (Start: 74 @55520 has 85 MA's), (132, 55649), (138, 55691), (139, 55697), (146, 55712), (147, 55721), (150, 55727), (152, 55748), (156, 55787), (160, 55802), (162, 55808), (164, 55814), (173, 55847), (184, 55871), (191, 55898), (197, 55943), (206, 55982), (218, 56039), (220, 56045),

Gene: Cain_94 Start: 56599, Stop: 57330, Start Num: 16

Candidate Starts for Cain_94:

(Start: 16 @56599 has 9 MA's), (51, 56707), (80, 56746), (86, 56773), (89, 56782), (114, 56860), (126, 56893), (132, 56920), (140, 56965), (158, 57061), (175, 57124), (184, 57136), (191, 57166), (194, 57181), (197, 57211), (206, 57250), (218, 57307), (220, 57313),

Gene: CallaLilly_88 Start: 55443, Stop: 55982, Start Num: 74

Candidate Starts for CallaLilly_88:

(23, 55287), (Start: 74 @55443 has 85 MA's), (132, 55572), (138, 55614), (139, 55620), (146, 55635), (147, 55644), (150, 55650), (152, 55671), (156, 55710), (160, 55725), (162, 55731), (164, 55737), (173, 55770), (184, 55794), (191, 55821), (197, 55866), (206, 55905), (218, 55962), (220, 55968),

Gene: Capricorn_87 Start: 55520, Stop: 56059, Start Num: 74

Candidate Starts for Capricorn_87:

(23, 55364), (Start: 74 @55520 has 85 MA's), (132, 55649), (138, 55691), (139, 55697), (146, 55712), (147, 55721), (150, 55727), (152, 55748), (156, 55787), (160, 55802), (162, 55808), (164, 55814), (173, 55847), (184, 55871), (191, 55898), (197, 55943), (206, 55982), (218, 56039), (220, 56045),

Gene: CaseJules_89 Start: 55717, Stop: 56256, Start Num: 74

Candidate Starts for CaseJules_89:

(23, 55561), (Start: 74 @55717 has 85 MA's), (132, 55846), (138, 55888), (139, 55894), (146, 55909), (147, 55918), (150, 55924), (152, 55945), (156, 55984), (160, 55999), (162, 56005), (164, 56011), (173, 56044), (184, 56068), (191, 56095), (197, 56140), (206, 56179), (218, 56236), (220, 56242),

Gene: Chavito_87 Start: 56767, Stop: 57426, Start Num: 43

Candidate Starts for Chavito_87:

(Start: 42 @56764 has 1 MA's), (Start: 43 @56767 has 3 MA's), (51, 56803), (62, 56833), (75, 56866), (82, 56887), (95, 56896), (120, 56953), (132, 57001), (139, 57049), (146, 57064), (147, 57073), (152, 57100), (154, 57121), (159, 57151), (169, 57187), (181, 57223), (187, 57244), (195, 57280), (196, 57304), (217, 57400), (220, 57412),

Gene: CheetoDust_87 Start: 54906, Stop: 55457, Start Num: 74

Candidate Starts for CheetoDust_87:

(23, 54750), (Start: 74 @54906 has 85 MA's), (132, 55047), (138, 55089), (139, 55095), (146, 55110), (147, 55119), (150, 55125), (152, 55146), (154, 55167), (156, 55185), (160, 55200), (164, 55212), (167, 55224), (173, 55245), (184, 55269), (191, 55296), (197, 55341), (202, 55365), (206, 55380), (218, 55437), (220, 55443),

Gene: Chris_88 Start: 55802, Stop: 56641, Start Num: 17

Candidate Starts for Chris_88:

(1, 55541), (2, 55550), (3, 55559), (5, 55622), (8, 55703), (12, 55766), (13, 55787), (Start: 17 @55802 has 1 MA's), (22, 55817), (24, 55829), (33, 55868), (34, 55871), (49, 55946), (51, 55952), (99, 56099), (121, 56159), (123, 56165), (127, 56177), (130, 56189), (141, 56255), (150, 56279), (157, 56342), (158, 56345), (163, 56363), (164, 56366), (188, 56465), (191, 56483), (192, 56486), (194, 56498), (197, 56525), (204, 56555), (220, 56627),

Gene: Clipper_94 Start: 56263, Stop: 56739, Start Num: 74

Candidate Starts for Clipper_94:

(31, 56143), (Start: 74 @56263 has 85 MA's), (84, 56296), (132, 56401), (139, 56449), (146, 56464), (148, 56476), (152, 56497), (154, 56518), (156, 56536), (160, 56551), (191, 56578), (197, 56623), (206, 56662), (218, 56719), (220, 56725),

Gene: Collard_77 Start: 51715, Stop: 52362, Start Num: 56

Candidate Starts for Collard_77:

(Start: 56 @51715 has 12 MA's), (63, 51733), (73, 51769), (93, 51829), (97, 51844), (126, 51931), (146, 52009), (163, 52111), (164, 52114), (198, 52249), (204, 52273), (212, 52315), (219, 52345),

Gene: CrimD_87 Start: 55556, Stop: 56107, Start Num: 74

Candidate Starts for CrimD_87:

(31, 55403), (38, 55430), (Start: 74 @55556 has 85 MA's), (132, 55697), (139, 55745), (146, 55760), (147, 55769), (150, 55775), (152, 55796), (154, 55817), (156, 55835), (160, 55850), (162, 55856), (164, 55862), (173, 55895), (184, 55919), (191, 55946), (197, 55991), (206, 56030), (218, 56087), (220, 56093),

Gene: Curiosium_95 Start: 56915, Stop: 57508, Start Num: 74

Candidate Starts for Curiosium_95:

(31, 56762), (38, 56789), (Start: 74 @56915 has 85 MA's), (99, 56993), (129, 57080), (132, 57098), (139, 57146), (146, 57161), (147, 57170), (152, 57197), (153, 57209), (154, 57218), (156, 57236), (173, 57296), (191, 57347), (192, 57350), (196, 57389), (197, 57392), (205, 57428), (218, 57488), (220, 57494),

Gene: Dadosky_80 Start: 52609, Stop: 53253, Start Num: 56

Candidate Starts for Dadosky_80:

(Start: 54 @52606 has 1 MA's), (Start: 56 @52609 has 12 MA's), (63, 52627), (93, 52723), (97, 52738), (103, 52756), (132, 52852), (148, 52915), (164, 53005), (180, 53053), (189, 53077), (190, 53080), (197, 53134), (201, 53155), (204, 53164), (212, 53206), (219, 53236),

Gene: Dalmuri_87 Start: 55520, Stop: 56059, Start Num: 74

Candidate Starts for Dalmuri_87:

(23, 55364), (Start: 74 @55520 has 85 MA's), (132, 55649), (138, 55691), (139, 55697), (146, 55712), (147, 55721), (150, 55727), (152, 55748), (156, 55787), (160, 55802), (162, 55808), (164, 55814), (173, 55847), (184, 55871), (191, 55898), (197, 55943), (206, 55982), (218, 56039), (220, 56045),

Gene: DarthP_84 Start: 55596, Stop: 56210, Start Num: 65

Candidate Starts for DarthP_84:

(Start: 65 @55596 has 4 MA's), (88, 55653), (107, 55701), (113, 55710), (131, 55770), (145, 55833), (150, 55851), (152, 55872), (154, 55893), (159, 55923), (163, 55935), (173, 55971), (178, 56001), (195, 56064), (197, 56091), (204, 56121), (208, 56139), (214, 56175), (217, 56184), (220, 56196),

Gene: Dartin_87 Start: 56409, Stop: 57068, Start Num: 43

Candidate Starts for Dartin_87:

(Start: 42 @56406 has 1 MA's), (Start: 43 @56409 has 3 MA's), (62, 56475), (75, 56508), (82, 56529), (95, 56538), (120, 56595), (132, 56643), (139, 56691), (146, 56706), (147, 56715), (152, 56742), (154, 56763), (159, 56793), (169, 56829), (181, 56865), (187, 56886), (195, 56922), (196, 56946), (197, 56949), (217, 57042), (220, 57054),

Gene: Deby_87 Start: 56043, Stop: 56654, Start Num: 74

Candidate Starts for Deby_87:

(31, 55890), (38, 55917), (Start: 74 @56043 has 85 MA's), (99, 56139), (129, 56226), (132, 56244), (139, 56292), (146, 56307), (152, 56343), (154, 56364), (156, 56382), (160, 56397), (162, 56403), (164, 56409), (173, 56442), (184, 56466), (191, 56493), (197, 56538), (206, 56577), (218, 56634), (220, 56640),

Gene: Devera_93 Start: 56388, Stop: 56936, Start Num: 74

Candidate Starts for Devera_93:

(Start: 74 @56388 has 85 MA's), (99, 56421), (129, 56508), (132, 56526), (139, 56574), (146, 56589), (147, 56598), (150, 56604), (152, 56625), (154, 56646), (156, 56664), (160, 56679), (162, 56685), (164, 56691), (173, 56724), (191, 56775), (193, 56784), (197, 56820), (204, 56850), (218, 56916), (220, 56922),

Gene: Dole_90 Start: 56391, Stop: 56939, Start Num: 74

Candidate Starts for Dole_90:

(Start: 74 @56391 has 85 MA's), (99, 56424), (129, 56511), (132, 56529), (139, 56577), (146, 56592), (147, 56601), (150, 56607), (152, 56628), (154, 56649), (156, 56667), (160, 56682), (162, 56688), (164, 56694), (173, 56727), (191, 56778), (193, 56787), (197, 56823), (204, 56853), (218, 56919), (220, 56925),

Gene: DrHayes_87 Start: 55782, Stop: 56321, Start Num: 74

Candidate Starts for DrHayes_87:

(Start: 74 @55782 has 85 MA's), (104, 55830), (132, 55911), (139, 55959), (146, 55974), (147, 55983), (150, 55989), (152, 56010), (153, 56022), (154, 56031), (156, 56049), (160, 56064), (164, 56076), (167, 56088), (173, 56109), (186, 56142), (191, 56160), (192, 56163), (197, 56205), (202, 56229), (206, 56244), (218, 56301), (220, 56307),

Gene: Durfee_87 Start: 55717, Stop: 56256, Start Num: 74

Candidate Starts for Durfee_87:

(23, 55561), (Start: 74 @55717 has 85 MA's), (132, 55846), (138, 55888), (139, 55894), (146, 55909), (147, 55918), (150, 55924), (152, 55945), (156, 55984), (160, 55999), (162, 56005), (164, 56011), (173, 56044), (184, 56068), (191, 56095), (197, 56140), (206, 56179), (218, 56236), (220, 56242),

Gene: Edugator_76 Start: 53777, Stop: 54424, Start Num: 54

Candidate Starts for Edugator_76:

(Start: 54 @53777 has 1 MA's), (Start: 56 @53780 has 12 MA's), (63, 53798), (93, 53894), (97, 53909), (103, 53927), (132, 54023), (148, 54086), (164, 54176), (180, 54224), (189, 54248), (190, 54251), (197, 54305), (201, 54326), (204, 54335), (212, 54377), (219, 54407),

Gene: Efra2_94 Start: 56866, Stop: 57423, Start Num: 74

Candidate Starts for Efra2_94:

(Start: 74 @56866 has 85 MA's), (95, 56899), (122, 56971), (132, 57010), (138, 57052), (139, 57058), (146, 57073), (150, 57088), (152, 57109), (154, 57130), (156, 57148), (158, 57154), (159, 57160), (165, 57184), (173, 57208), (184, 57232), (196, 57301), (205, 57340), (211, 57370), (217, 57397), (220, 57409),

Gene: Ekdilam_80 Start: 55444, Stop: 56052, Start Num: 65

Candidate Starts for Ekdilam_80:

(Start: 65 @55444 has 4 MA's), (88, 55501), (117, 55567), (140, 55666), (150, 55693), (152, 55714), (157, 55756), (159, 55765), (173, 55813), (178, 55843), (207, 55978), (211, 55999), (215, 56020), (217, 56026), (220, 56038),

Gene: Ellie_85 Start: 55858, Stop: 56547, Start Num: 59

Candidate Starts for Ellie_85:

(50, 55834), (Start: 59 @55858 has 3 MA's), (90, 55933), (118, 56008), (127, 56038), (140, 56110), (154, 56179), (158, 56203), (171, 56278), (188, 56371), (197, 56431), (201, 56452), (202, 56455), (204, 56461), (206, 56470), (218, 56527), (220, 56533),

Gene: Emerson_89 Start: 55720, Stop: 56331, Start Num: 74

Candidate Starts for Emerson_89:

(31, 55567), (38, 55594), (Start: 74 @55720 has 85 MA's), (96, 55807), (129, 55903), (132, 55921), (139, 55969), (142, 55975), (146, 55984), (152, 56020), (154, 56041), (156, 56059), (160, 56074), (164, 56086), (173, 56119), (184, 56143), (191, 56170), (197, 56215), (206, 56254), (218, 56311), (220, 56317),

Gene: Enkosi_70 Start: 53841, Stop: 54485, Start Num: 61

Candidate Starts for Enkosi_70:

(Start: 60 @53835 has 2 MA's), (Start: 61 @53841 has 6 MA's), (68, 53868), (76, 53895), (79, 53907), (88, 53922), (98, 53946), (100, 53952), (108, 53976), (111, 53985), (133, 54075), (145, 54120), (146, 54123), (150, 54138), (154, 54180), (157, 54201), (158, 54204), (159, 54210), (160, 54213), (164, 54225), (165, 54234), (173, 54258), (177, 54279), (181, 54291), (182, 54294), (185, 54303), (192, 54324), (196, 54363), (197, 54366), (204, 54396), (206, 54405), (217, 54459), (219, 54468),

Gene: Fefferhead_87 Start: 55655, Stop: 56341, Start Num: 59

Candidate Starts for Fefferhead_87:

(50, 55631), (Start: 59 @55655 has 3 MA's), (90, 55727), (93, 55733), (118, 55802), (133, 55868), (140, 55904), (154, 55973), (158, 55997), (171, 56072), (188, 56165), (197, 56225), (201, 56246), (202, 56249), (204, 56255), (206, 56264), (218, 56321), (220, 56327),

Gene: Feyre_82 Start: 55415, Stop: 56056, Start Num: 57

Candidate Starts for Feyre_82:

(37, 55322), (46, 55373), (Start: 57 @55415 has 9 MA's), (Start: 61 @55430 has 6 MA's), (63, 55436), (73, 55472), (77, 55487), (93, 55532), (146, 55709), (180, 55856), (212, 56009), (220, 56042),

Gene: Ganymede_87 Start: 55523, Stop: 56071, Start Num: 74

Candidate Starts for Ganymede_87:

(Start: 74 @55523 has 85 MA's), (99, 55556), (125, 55631), (129, 55643), (132, 55661), (139, 55709), (146, 55724), (147, 55733), (150, 55739), (152, 55760), (154, 55781), (156, 55799), (160, 55814), (162, 55820), (164, 55826), (173, 55859), (184, 55883), (191, 55910), (197, 55955), (206, 55994), (218, 56051), (220, 56057),

Gene: Gengar_81 Start: 54230, Stop: 54871, Start Num: 57

Candidate Starts for Gengar_81:

(4, 53843), (7, 53900), (37, 54137), (46, 54188), (Start: 57 @54230 has 9 MA's), (Start: 61 @54245 has 6 MA's), (73, 54287), (77, 54302), (93, 54347), (147, 54533), (180, 54671), (204, 54782), (212, 54824), (220, 54857),

Gene: Geraldini_89 Start: 55561, Stop: 56172, Start Num: 74

Candidate Starts for Geraldini_89:

(31, 55408), (38, 55435), (Start: 74 @55561 has 85 MA's), (96, 55648), (125, 55732), (129, 55744), (132, 55762), (139, 55810), (146, 55825), (150, 55840), (152, 55861), (154, 55882), (156, 55900), (160, 55915), (162, 55921), (164, 55927), (173, 55960), (184, 55984), (191, 56011), (197, 56056), (202, 56080), (206, 56095), (218, 56152), (220, 56158),

Gene: Guanica15_93 Start: 56558, Stop: 57112, Start Num: 74

Candidate Starts for Guanica15_93:

(Start: 74 @56558 has 85 MA's), (95, 56591), (129, 56681), (138, 56741), (139, 56747), (146, 56762), (150, 56777), (152, 56798), (154, 56819), (156, 56837), (158, 56843), (159, 56849), (165, 56873), (173, 56897), (184, 56921), (196, 56990), (205, 57029), (211, 57059), (217, 57086), (220, 57098),

Gene: Guillsminger_82 Start: 54078, Stop: 54719, Start Num: 57

Candidate Starts for Guillsminger_82:

(Start: 57 @54078 has 9 MA's), (Start: 61 @54093 has 6 MA's), (73, 54135), (77, 54150), (93, 54195), (103, 54225), (126, 54294), (146, 54372), (147, 54381), (164, 54471), (166, 54483), (180, 54519), (212, 54672), (219, 54702), (220, 54705),

Gene: Hammy_84 Start: 55586, Stop: 56200, Start Num: 65

Candidate Starts for Hammy_84:

(Start: 65 @55586 has 4 MA's), (88, 55643), (107, 55691), (113, 55700), (131, 55760), (145, 55823), (150, 55841), (152, 55862), (154, 55883), (159, 55913), (173, 55961), (178, 55991), (195, 56054), (197, 56081), (204, 56111), (208, 56129), (214, 56165), (217, 56174), (220, 56186),

Gene: HedwigODU_87 Start: 55559, Stop: 56098, Start Num: 74

Candidate Starts for HedwigODU_87:

(23, 55403), (Start: 74 @55559 has 85 MA's), (132, 55688), (138, 55730), (139, 55736), (146, 55751), (147, 55760), (150, 55766), (152, 55787), (156, 55826), (160, 55841), (162, 55847), (164, 55853), (167, 55865), (173, 55886), (191, 55937), (197, 55982), (206, 56021), (218, 56078), (220, 56084),

Gene: Heftyboy_79 Start: 53442, Stop: 54089, Start Num: 56

Candidate Starts for Heftyboy_79:

(Start: 56 @53442 has 12 MA's), (63, 53460), (73, 53496), (93, 53556), (97, 53571), (126, 53658), (146, 53736), (163, 53838), (164, 53841), (198, 53976), (204, 54000), (212, 54042), (219, 54072),

Gene: Homura_86 Start: 55520, Stop: 56059, Start Num: 74

Candidate Starts for Homura_86:

(23, 55364), (Start: 74 @55520 has 85 MA's), (132, 55649), (138, 55691), (139, 55697), (146, 55712), (147, 55721), (150, 55727), (152, 55748), (156, 55787), (160, 55802), (162, 55808), (164, 55814), (173, 55847), (184, 55871), (191, 55898), (197, 55943), (206, 55982), (218, 56039), (220, 56045),

Gene: Hyperbowlee_86 Start: 55717, Stop: 56256, Start Num: 74

Candidate Starts for Hyperbowlee_86:

(23, 55561), (Start: 74 @55717 has 85 MA's), (132, 55846), (138, 55888), (139, 55894), (146, 55909), (147, 55918), (150, 55924), (152, 55945), (156, 55984), (160, 55999), (162, 56005), (164, 56011), (173, 56044), (184, 56068), (191, 56095), (197, 56140), (206, 56179), (218, 56236), (220, 56242),

Gene: Illumine_91 Start: 56390, Stop: 56938, Start Num: 74

Candidate Starts for Illumine_91:

(Start: 74 @56390 has 85 MA's), (99, 56423), (129, 56510), (132, 56528), (139, 56576), (146, 56591), (147, 56600), (150, 56606), (152, 56627), (154, 56648), (156, 56666), (160, 56681), (162, 56687), (164, 56693), (173, 56726), (191, 56777), (193, 56786), (197, 56822), (204, 56852), (218, 56918), (220, 56924),

Gene: Inky_87 Start: 55520, Stop: 56059, Start Num: 74

Candidate Starts for Inky_87:

(23, 55364), (Start: 74 @55520 has 85 MA's), (132, 55649), (138, 55691), (139, 55697), (146, 55712), (147, 55721), (150, 55727), (152, 55748), (156, 55787), (160, 55802), (162, 55808), (164, 55814), (173, 55847), (184, 55871), (191, 55898), (197, 55943), (206, 55982), (218, 56039), (220, 56045),

Gene: InvictusManeo_77 Start: 51755, Stop: 52402, Start Num: 56

Candidate Starts for InvictusManeo_77:

(Start: 56 @51755 has 12 MA's), (63, 51773), (73, 51809), (93, 51869), (97, 51884), (103, 51902), (146, 52049), (151, 52070), (160, 52142), (164, 52154), (166, 52166), (169, 52175), (180, 52202), (197, 52283), (204, 52313), (212, 52355), (219, 52385),

Gene: JAWS_86 Start: 55506, Stop: 56045, Start Num: 74

Candidate Starts for JAWS_86:

(23, 55350), (Start: 74 @55506 has 85 MA's), (132, 55635), (138, 55677), (139, 55683), (146, 55698), (150, 55713), (152, 55734), (156, 55773), (160, 55788), (162, 55794), (164, 55800), (167, 55812), (173, 55833), (191, 55884), (197, 55929), (206, 55968), (218, 56025), (220, 56031),

Gene: Jarvi_87 Start: 55520, Stop: 56059, Start Num: 74

Candidate Starts for Jarvi_87:

(23, 55364), (Start: 74 @55520 has 85 MA's), (132, 55649), (138, 55691), (139, 55697), (146, 55712), (147, 55721), (150, 55727), (152, 55748), (156, 55787), (160, 55802), (162, 55808), (164, 55814), (173, 55847), (184, 55871), (191, 55898), (197, 55943), (206, 55982), (218, 56039), (220, 56045),

Gene: Jayhawk_89 Start: 55536, Stop: 56075, Start Num: 74

Candidate Starts for Jayhawk_89:

(Start: 74 @55536 has 85 MA's), (101, 55575), (132, 55665), (138, 55707), (139, 55713), (146, 55728), (147, 55737), (150, 55743), (152, 55764), (154, 55785), (156, 55803), (160, 55818), (162, 55824), (164, 55830), (173, 55863), (184, 55887), (191, 55914), (197, 55959), (206, 55998), (218, 56055), (220, 56061),

Gene: Jeckyll_87 Start: 55520, Stop: 56059, Start Num: 74

Candidate Starts for Jeckyll_87:

(23, 55364), (Start: 74 @55520 has 85 MA's), (132, 55649), (138, 55691), (139, 55697), (146, 55712), (147, 55721), (150, 55727), (152, 55748), (156, 55787), (160, 55802), (162, 55808), (164, 55814), (173, 55847), (184, 55871), (191, 55898), (197, 55943), (206, 55982), (218, 56039), (220, 56045),

Gene: Joy99_88 Start: 55649, Stop: 56188, Start Num: 74

Candidate Starts for Joy99_88:

(23, 55493), (Start: 74 @55649 has 85 MA's), (132, 55778), (138, 55820), (139, 55826), (146, 55841), (147, 55850), (150, 55856), (152, 55877), (156, 55916), (160, 55931), (162, 55937), (164, 55943), (173, 55976), (184, 56000), (191, 56027), (197, 56072), (206, 56111), (218, 56168), (220, 56174),

Gene: KiSi_89 Start: 55752, Stop: 56375, Start Num: 64

Candidate Starts for KiSi_89:

(48, 55710), (Start: 64 @55752 has 4 MA's), (67, 55767), (71, 55779), (99, 55851), (141, 56016), (146, 56025), (150, 56040), (158, 56106), (163, 56124), (172, 56151), (188, 56199), (192, 56220), (196, 56256), (197, 56259), (202, 56283), (204, 56289), (220, 56361),

Gene: Kratio_80 Start: 52503, Stop: 53210, Start Num: 56

Candidate Starts for Kratio_80:

(Start: 54 @52500 has 1 MA's), (Start: 56 @52503 has 12 MA's), (63, 52521), (93, 52617), (97, 52632), (103, 52650), (132, 52746), (148, 52809), (164, 52899), (189, 52971), (190, 52974), (197, 53028),

(204, 53058), (212, 53100), (219, 53130),

Gene: Krueger_91 Start: 55693, Stop: 56526, Start Num: 16

Candidate Starts for Krueger_91:

(Start: 14 @55687 has 1 MA's), (Start: 16 @55693 has 9 MA's), (26, 55735), (30, 55747), (44, 55804), (51, 55843), (89, 55978), (99, 56020), (126, 56089), (132, 56116), (149, 56188), (158, 56257), (175, 56320), (184, 56332), (191, 56362), (194, 56377), (197, 56407), (201, 56428), (202, 56431), (206, 56446), (216, 56497), (218, 56503), (220, 56509),

Gene: Larva_79 Start: 53481, Stop: 54125, Start Num: 56

Candidate Starts for Larva_79:

(Start: 54 @53478 has 1 MA's), (Start: 56 @53481 has 12 MA's), (63, 53499), (93, 53595), (97, 53610), (103, 53628), (132, 53724), (148, 53787), (164, 53877), (180, 53925), (189, 53949), (190, 53952), (197, 54006), (201, 54027), (204, 54036), (212, 54078), (219, 54108),

Gene: LastHope_93 Start: 56273, Stop: 56836, Start Num: 74

Candidate Starts for LastHope_93:

(Start: 74 @56273 has 85 MA's), (95, 56306), (125, 56381), (137, 56456), (139, 56471), (146, 56486), (147, 56495), (150, 56501), (152, 56522), (154, 56543), (156, 56561), (158, 56567), (159, 56573), (164, 56588), (165, 56597), (173, 56621), (184, 56645), (196, 56714), (197, 56717), (201, 56738), (204, 56747), (206, 56756), (211, 56783), (217, 56810),

Gene: LaterM_87 Start: 55885, Stop: 56478, Start Num: 74

Candidate Starts for LaterM_87:

(Start: 74 @55885 has 85 MA's), (99, 55963), (109, 55990), (132, 56068), (135, 56095), (139, 56116), (146, 56131), (150, 56146), (152, 56167), (153, 56179), (154, 56188), (160, 56221), (162, 56227), (164, 56233), (167, 56245), (186, 56299), (191, 56317), (192, 56320), (197, 56362), (206, 56401), (218, 56458), (220, 56464),

Gene: LeMond_88 Start: 55714, Stop: 56331, Start Num: 64

Candidate Starts for LeMond_88:

(Start: 64 @55714 has 4 MA's), (67, 55729), (71, 55741), (99, 55813), (124, 55882), (141, 55972), (158, 56062), (163, 56080), (172, 56107), (188, 56155), (192, 56176), (196, 56212), (197, 56215), (198, 56221), (202, 56239), (204, 56245), (220, 56317),

Gene: Leston_81 Start: 54195, Stop: 54836, Start Num: 57

Candidate Starts for Leston_81:

(Start: 57 @54195 has 9 MA's), (Start: 61 @54210 has 6 MA's), (73, 54252), (77, 54267), (93, 54312), (103, 54342), (126, 54411), (146, 54489), (164, 54588), (166, 54600), (180, 54636), (212, 54789), (220, 54822),

Gene: LilPharaoh_69 Start: 50950, Stop: 51600, Start Num: 60

Candidate Starts for LilPharaoh_69:

(Start: 60 @50950 has 2 MA's), (Start: 61 @50956 has 6 MA's), (68, 50983), (76, 51010), (79, 51022), (88, 51037), (98, 51061), (100, 51067), (108, 51091), (111, 51100), (133, 51190), (145, 51235), (146, 51238), (150, 51253), (154, 51295), (157, 51316), (158, 51319), (159, 51325), (160, 51328), (164, 51340), (165, 51349), (173, 51373), (177, 51394), (181, 51406), (182, 51409), (185, 51418), (192, 51439), (196, 51478), (197, 51481), (204, 51511), (206, 51520), (217, 51574), (219, 51583),

Gene: LindNT_85 Start: 55622, Stop: 56173, Start Num: 74

Candidate Starts for LindNT_85:

(6, 55286), (Start: 74 @55622 has 85 MA's), (99, 55655), (125, 55733), (129, 55745), (132, 55763), (139, 55811), (146, 55826), (147, 55835), (150, 55841), (152, 55862), (154, 55883), (156, 55901),

(160, 55916), (162, 55922), (164, 55928), (173, 55961), (184, 55985), (191, 56012), (197, 56057), (206, 56096), (218, 56153), (220, 56159),

Gene: Llorens_87 Start: 55520, Stop: 56059, Start Num: 74

Candidate Starts for Llorens_87:

(23, 55364), (Start: 74 @55520 has 85 MA's), (132, 55649), (138, 55691), (139, 55697), (146, 55712), (147, 55721), (150, 55727), (152, 55748), (156, 55787), (160, 55802), (162, 55808), (164, 55814), (173, 55847), (184, 55871), (191, 55898), (197, 55943), (206, 55982), (218, 56039), (220, 56045),

Gene: Lunahalos_87 Start: 55520, Stop: 56059, Start Num: 74

Candidate Starts for Lunahalos_87:

(23, 55364), (Start: 74 @55520 has 85 MA's), (132, 55649), (138, 55691), (139, 55697), (146, 55712), (147, 55721), (150, 55727), (152, 55748), (156, 55787), (160, 55802), (162, 55808), (164, 55814), (173, 55847), (184, 55871), (191, 55898), (197, 55943), (206, 55982), (218, 56039), (220, 56045),

Gene: MacKat_84 Start: 51147, Stop: 51623, Start Num: 74

Candidate Starts for MacKat_84:

(31, 51027), (Start: 74 @51147 has 85 MA's), (84, 51180), (132, 51285), (139, 51333), (146, 51348), (148, 51360), (152, 51381), (154, 51402), (156, 51420), (160, 51435), (191, 51462), (197, 51507), (206, 51546), (218, 51603), (220, 51609),

Gene: MarkPhew_89 Start: 55775, Stop: 56458, Start Num: 39

Candidate Starts for MarkPhew_89:

(18, 55703), (35, 55760), (Start: 39 @55775 has 2 MA's), (Start: 42 @55790 has 1 MA's), (47, 55802), (99, 55940), (115, 55994), (141, 56099), (150, 56123), (158, 56189), (163, 56207), (172, 56234), (174, 56240), (179, 56249), (188, 56282), (197, 56342), (198, 56348), (200, 56363), (202, 56366), (204, 56372), (207, 56387), (220, 56444),

Gene: Marshawn_85 Start: 55928, Stop: 56566, Start Num: 55

Candidate Starts for Marshawn_85:

(15, 55766), (19, 55775), (20, 55781), (25, 55805), (28, 55820), (36, 55844), (41, 55868), (50, 55913), (Start: 55 @55928 has 1 MA's), (76, 55979), (77, 55982), (78, 55985), (106, 56054), (143, 56201), (147, 56222), (152, 56252), (154, 56273), (158, 56297), (169, 56339), (172, 56348), (173, 56351), (175, 56360), (191, 56402), (197, 56447), (201, 56468), (202, 56471), (206, 56486), (209, 56498), (220, 56552),

Gene: McMater_87 Start: 56409, Stop: 57068, Start Num: 43

Candidate Starts for McMater_87:

(Start: 42 @56406 has 1 MA's), (Start: 43 @56409 has 3 MA's), (62, 56475), (75, 56508), (82, 56529), (95, 56538), (120, 56595), (132, 56643), (139, 56691), (146, 56706), (147, 56715), (152, 56742), (154, 56763), (159, 56793), (169, 56829), (181, 56865), (187, 56886), (195, 56922), (196, 56946), (197, 56949), (217, 57042), (220, 57054),

Gene: Mdavu_69 Start: 51232, Stop: 51876, Start Num: 61

Candidate Starts for Mdavu_69:

(Start: 60 @51226 has 2 MA's), (Start: 61 @51232 has 6 MA's), (68, 51259), (76, 51286), (79, 51298), (88, 51313), (98, 51337), (100, 51343), (108, 51367), (111, 51376), (133, 51466), (145, 51511), (146, 51514), (150, 51529), (154, 51571), (157, 51592), (158, 51595), (159, 51601), (160, 51604), (164, 51616), (165, 51625), (173, 51649), (177, 51670), (181, 51682), (182, 51685), (185, 51694), (192, 51715), (196, 51754), (197, 51757), (204, 51787), (206, 51796), (217, 51850), (219, 51859),

Gene: MeaningOfLife_89 Start: 56205, Stop: 56744, Start Num: 74

Candidate Starts for MeaningOfLife_89:

(Start: 74 @56205 has 85 MA's), (132, 56334), (138, 56376), (139, 56382), (146, 56397), (147, 56406), (150, 56412), (152, 56433), (154, 56454), (156, 56472), (160, 56487), (162, 56493), (164, 56499), (173, 56532), (184, 56556), (191, 56583), (197, 56628), (206, 56667), (218, 56724), (220, 56730),

Gene: Megsy_91 Start: 55851, Stop: 56402, Start Num: 74

Candidate Starts for Megsy_91:

(31, 55698), (38, 55725), (Start: 74 @55851 has 85 MA's), (125, 55962), (129, 55974), (132, 55992), (139, 56040), (146, 56055), (147, 56064), (152, 56091), (154, 56112), (156, 56130), (160, 56145), (162, 56151), (164, 56157), (173, 56190), (184, 56214), (191, 56241), (197, 56286), (206, 56325), (218, 56382), (220, 56388),

Gene: Miryou_83 Start: 56053, Stop: 56694, Start Num: 57

Candidate Starts for Miryou_83:

(Start: 57 @56053 has 9 MA's), (Start: 61 @56068 has 6 MA's), (63, 56074), (73, 56110), (77, 56125), (93, 56170), (103, 56200), (125, 56266), (126, 56269), (147, 56356), (180, 56494), (204, 56605), (212, 56647), (220, 56680),

Gene: Murucutumbu_87 Start: 56412, Stop: 56960, Start Num: 74

Candidate Starts for Murucutumbu_87:

(21, 56256), (Start: 74 @56412 has 85 MA's), (99, 56445), (126, 56523), (132, 56550), (139, 56598), (146, 56613), (147, 56622), (150, 56628), (152, 56649), (154, 56670), (156, 56688), (160, 56703), (162, 56709), (164, 56715), (167, 56727), (186, 56781), (191, 56799), (192, 56802), (197, 56844), (206, 56883), (218, 56940), (220, 56946),

Gene: Mynx_88 Start: 55828, Stop: 56367, Start Num: 74

Candidate Starts for Mynx_88:

(23, 55672), (Start: 74 @55828 has 85 MA's), (132, 55957), (138, 55999), (139, 56005), (146, 56020), (147, 56029), (150, 56035), (152, 56056), (154, 56077), (156, 56095), (160, 56110), (164, 56122), (167, 56134), (173, 56155), (184, 56179), (191, 56206), (197, 56251), (206, 56290), (218, 56347), (220, 56353),

Gene: Neighly_80 Start: 53480, Stop: 54124, Start Num: 56

Candidate Starts for Neighly_80:

(Start: 54 @53477 has 1 MA's), (Start: 56 @53480 has 12 MA's), (63, 53498), (93, 53594), (97, 53609), (103, 53627), (132, 53723), (148, 53786), (164, 53876), (180, 53924), (189, 53948), (190, 53951), (197, 54005), (201, 54026), (204, 54035), (212, 54077), (219, 54107),

Gene: Nibb_89 Start: 55433, Stop: 56137, Start Num: 39

Candidate Starts for Nibb_89:

(9, 55271), (11, 55289), (35, 55418), (Start: 39 @55433 has 2 MA's), (Start: 42 @55448 has 1 MA's), (Start: 59 @55502 has 3 MA's), (99, 55622), (121, 55682), (127, 55700), (130, 55712), (141, 55778), (146, 55787), (158, 55868), (163, 55886), (172, 55913), (174, 55919), (179, 55928), (188, 55961), (191, 55979), (192, 55982), (197, 56021), (199, 56039), (202, 56045), (204, 56051), (207, 56066), (220, 56123),

Gene: Nikao_71 Start: 53841, Stop: 54485, Start Num: 61

Candidate Starts for Nikao_71:

(Start: 60 @53835 has 2 MA's), (Start: 61 @53841 has 6 MA's), (68, 53868), (76, 53895), (79, 53907), (88, 53922), (98, 53946), (100, 53952), (108, 53976), (111, 53985), (133, 54075), (145, 54120), (146, 54123), (150, 54138), (154, 54180), (157, 54201), (158, 54204), (159, 54210), (160, 54213), (164, 54225), (165, 54234), (173, 54258), (177, 54279), (181, 54291), (182, 54294), (185, 54303), (192, 54324), (196, 54363), (197, 54366), (204, 54396), (206, 54405), (217, 54459), (219, 54468),

Gene: Niklas_88 Start: 56449, Stop: 57108, Start Num: 43

Candidate Starts for Niklas_88:

(Start: 42 @56446 has 1 MA's), (Start: 43 @56449 has 3 MA's), (62, 56515), (75, 56548), (82, 56569), (95, 56578), (120, 56635), (132, 56683), (139, 56731), (146, 56746), (147, 56755), (152, 56782), (154, 56803), (159, 56833), (169, 56869), (181, 56905), (187, 56926), (195, 56962), (196, 56986), (197, 56989), (210, 57049), (217, 57082), (220, 57094),

Gene: November_84 Start: 55714, Stop: 56274, Start Num: 88

Candidate Starts for November_84:

(88, 55714), (Start: 94 @55732 has 1 MA's), (105, 55756), (107, 55765), (113, 55774), (131, 55834), (140, 55888), (150, 55915), (154, 55957), (159, 55987), (173, 56035), (178, 56065), (195, 56128), (197, 56155), (204, 56185), (208, 56203), (213, 56236), (217, 56248), (220, 56260),

Gene: Nutello_68 Start: 51228, Stop: 51872, Start Num: 61

Candidate Starts for Nutello_68:

(Start: 60 @51222 has 2 MA's), (Start: 61 @51228 has 6 MA's), (68, 51255), (76, 51282), (79, 51294), (88, 51309), (98, 51333), (100, 51339), (108, 51363), (111, 51372), (133, 51462), (145, 51507), (146, 51510), (150, 51525), (154, 51567), (157, 51588), (158, 51591), (159, 51597), (160, 51600), (164, 51612), (165, 51621), (173, 51645), (177, 51666), (181, 51678), (182, 51681), (185, 51690), (192, 51711), (196, 51750), (197, 51753), (204, 51783), (206, 51792), (217, 51846), (219, 51855),

Gene: OkiRoe_82 Start: 55193, Stop: 55834, Start Num: 57

Candidate Starts for OkiRoe_82:

(4, 54806), (7, 54863), (37, 55100), (46, 55151), (Start: 57 @55193 has 9 MA's), (Start: 61 @55208 has 6 MA's), (73, 55250), (77, 55265), (93, 55310), (147, 55496), (155, 55553), (180, 55634), (196, 55712), (212, 55787), (219, 55817), (220, 55820),

Gene: Omnicron_84 Start: 56077, Stop: 56712, Start Num: 56

Candidate Starts for Omnicron_84:

(Start: 56 @56077 has 12 MA's), (63, 56098), (93, 56185), (97, 56200), (103, 56218), (155, 56431), (164, 56464), (219, 56695),

Gene: Oscar_89 Start: 55635, Stop: 56255, Start Num: 64

Candidate Starts for Oscar_89:

(Start: 64 @55635 has 4 MA's), (67, 55650), (71, 55662), (99, 55734), (141, 55896), (158, 55986), (163, 56004), (172, 56031), (188, 56079), (192, 56100), (196, 56136), (197, 56139), (198, 56145), (202, 56163), (204, 56169), (220, 56241),

Gene: Padfoot_87 Start: 55717, Stop: 56256, Start Num: 74

Candidate Starts for Padfoot_87:

(23, 55561), (Start: 74 @55717 has 85 MA's), (132, 55846), (138, 55888), (139, 55894), (146, 55909), (147, 55918), (150, 55924), (152, 55945), (156, 55984), (160, 55999), (162, 56005), (164, 56011), (173, 56044), (184, 56068), (191, 56095), (197, 56140), (206, 56179), (218, 56236), (220, 56242),

Gene: Padpat_90 Start: 55720, Stop: 56331, Start Num: 74

Candidate Starts for Padpat_90:

(31, 55567), (38, 55594), (Start: 74 @55720 has 85 MA's), (96, 55807), (129, 55903), (132, 55921), (139, 55969), (142, 55975), (146, 55984), (152, 56020), (154, 56041), (156, 56059), (160, 56074), (164, 56086), (173, 56119), (184, 56143), (191, 56170), (197, 56215), (206, 56254), (218, 56311), (220, 56317),

Gene: Paola_81 Start: 54078, Stop: 54719, Start Num: 57

Candidate Starts for Paola_81:

(Start: 57 @54078 has 9 MA's), (Start: 61 @54093 has 6 MA's), (73, 54135), (77, 54150), (93, 54195), (103, 54225), (126, 54294), (146, 54372), (147, 54381), (164, 54471), (166, 54483), (180, 54519), (212, 54672), (219, 54702), (220, 54705),

Gene: Peanam_88 Start: 56428, Stop: 57087, Start Num: 43

Candidate Starts for Peanam_88:

(Start: 42 @56425 has 1 MA's), (Start: 43 @56428 has 3 MA's), (51, 56464), (Start: 56 @56479 has 12 MA's), (62, 56494), (75, 56527), (82, 56548), (95, 56557), (120, 56614), (132, 56662), (139, 56710), (146, 56725), (147, 56734), (152, 56761), (154, 56782), (159, 56812), (169, 56848), (181, 56884), (187, 56905), (195, 56941), (196, 56965), (217, 57061), (220, 57073),

Gene: Peel_87 Start: 55522, Stop: 56061, Start Num: 74

Candidate Starts for Peel_87:

(23, 55366), (Start: 74 @55522 has 85 MA's), (132, 55651), (138, 55693), (139, 55699), (146, 55714), (147, 55723), (150, 55729), (152, 55750), (156, 55789), (160, 55804), (162, 55810), (164, 55816), (173, 55849), (184, 55873), (191, 55900), (197, 55945), (206, 55984), (218, 56041), (220, 56047),

Gene: PhelpsODU_84 Start: 52304, Stop: 53098, Start Num: 16

Candidate Starts for PhelpsODU_84:

(Start: 16 @52304 has 9 MA's), (26, 52346), (51, 52454), (52, 52457), (70, 52484), (83, 52526), (87, 52547), (96, 52583), (99, 52592), (112, 52625), (126, 52664), (147, 52757), (149, 52763), (152, 52784), (158, 52829), (161, 52841), (175, 52892), (191, 52934), (194, 52949), (197, 52979), (206, 53018), (218, 53075), (220, 53081),

Gene: Phrank_94 Start: 56586, Stop: 57317, Start Num: 16

Candidate Starts for Phrank_94:

(Start: 16 @56586 has 9 MA's), (51, 56694), (80, 56733), (86, 56760), (89, 56769), (114, 56847), (126, 56880), (132, 56907), (140, 56952), (158, 57048), (175, 57111), (184, 57123), (191, 57153), (194, 57168), (197, 57198), (206, 57237), (218, 57294), (220, 57300),

Gene: Piatt_86 Start: 55717, Stop: 56256, Start Num: 74

Candidate Starts for Piatt_86:

(23, 55561), (Start: 74 @55717 has 85 MA's), (132, 55846), (138, 55888), (139, 55894), (146, 55909), (147, 55918), (150, 55924), (152, 55945), (156, 55984), (160, 55999), (162, 56005), (164, 56011), (173, 56044), (184, 56068), (191, 56095), (197, 56140), (206, 56179), (218, 56236), (220, 56242),

Gene: Pokerus_87 Start: 55526, Stop: 56065, Start Num: 74

Candidate Starts for Pokerus_87:

(Start: 74 @55526 has 85 MA's), (132, 55655), (138, 55697), (139, 55703), (146, 55718), (147, 55727), (150, 55733), (152, 55754), (156, 55793), (160, 55808), (164, 55820), (173, 55853), (184, 55877), (191, 55904), (197, 55949), (206, 55988), (218, 56045), (220, 56051),

Gene: Prithvi_89 Start: 55920, Stop: 56471, Start Num: 74

Candidate Starts for Prithvi_89:

(Start: 14 @55740 has 1 MA's), (23, 55764), (Start: 74 @55920 has 85 MA's), (99, 55953), (125, 56031), (129, 56043), (132, 56061), (139, 56109), (146, 56124), (147, 56133), (150, 56139), (152, 56160), (154, 56181), (156, 56199), (160, 56214), (162, 56220), (164, 56226), (173, 56259), (184, 56283), (191, 56310), (196, 56352), (197, 56355), (202, 56379), (206, 56394), (218, 56451), (220, 56457),

Gene: Psycho_78 Start: 52606, Stop: 53250, Start Num: 56

Candidate Starts for Psycho_78:

(Start: 54 @52603 has 1 MA's), (Start: 56 @52606 has 12 MA's), (63, 52624), (93, 52720), (97, 52735), (103, 52753), (132, 52849), (148, 52912), (164, 53002), (180, 53050), (189, 53074), (190, 53077), (197, 53131), (201, 53152), (204, 53161), (212, 53203), (219, 53233),

Gene: QuincyRose_85 Start: 55523, Stop: 56071, Start Num: 74

Candidate Starts for QuincyRose_85:

(Start: 74 @55523 has 85 MA's), (99, 55556), (125, 55631), (129, 55643), (132, 55661), (139, 55709), (146, 55724), (147, 55733), (150, 55739), (152, 55760), (154, 55781), (156, 55799), (160, 55814), (162, 55820), (164, 55826), (173, 55859), (184, 55883), (191, 55910), (197, 55955), (206, 55994), (218, 56051), (220, 56057),

Gene: Ramen_88 Start: 55275, Stop: 55814, Start Num: 74

Candidate Starts for Ramen_88:

(Start: 74 @55275 has 85 MA's), (101, 55314), (132, 55404), (138, 55446), (139, 55452), (146, 55467), (147, 55476), (150, 55482), (152, 55503), (154, 55524), (156, 55542), (160, 55557), (162, 55563), (173, 55602), (184, 55626), (191, 55653), (197, 55698), (206, 55737), (218, 55794), (220, 55800),

Gene: Rando14_81 Start: 54488, Stop: 55123, Start Num: 56

Candidate Starts for Rando14_81:

(Start: 56 @54488 has 12 MA's), (63, 54509), (93, 54596), (97, 54611), (103, 54629), (155, 54842), (164, 54875), (219, 55106),

Gene: Rapunzel97_89 Start: 55491, Stop: 56030, Start Num: 74

Candidate Starts for Rapunzel97_89:

(Start: 74 @55491 has 85 MA's), (101, 55530), (132, 55620), (138, 55662), (139, 55668), (146, 55683), (147, 55692), (150, 55698), (152, 55719), (154, 55740), (156, 55758), (160, 55773), (162, 55779), (164, 55785), (173, 55818), (184, 55842), (191, 55869), (197, 55914), (206, 55953), (218, 56010), (220, 56016),

Gene: Richo_87 Start: 56409, Stop: 57068, Start Num: 43

Candidate Starts for Richo_87:

(Start: 42 @56406 has 1 MA's), (Start: 43 @56409 has 3 MA's), (62, 56475), (75, 56508), (82, 56529), (95, 56538), (120, 56595), (132, 56643), (139, 56691), (146, 56706), (147, 56715), (152, 56742), (154, 56763), (159, 56793), (169, 56829), (181, 56865), (187, 56886), (195, 56922), (196, 56946), (197, 56949), (217, 57042), (220, 57054),

Gene: Rosmarinus_87 Start: 55508, Stop: 56047, Start Num: 74

Candidate Starts for Rosmarinus_87:

(23, 55352), (Start: 74 @55508 has 85 MA's), (125, 55607), (132, 55637), (138, 55679), (139, 55685), (146, 55700), (147, 55709), (150, 55715), (152, 55736), (156, 55775), (160, 55790), (162, 55796), (164, 55802), (173, 55835), (184, 55859), (191, 55886), (197, 55931), (206, 55970), (218, 56027), (220, 56033),

Gene: SamuelLPlaqson_87 Start: 55782, Stop: 56321, Start Num: 74

Candidate Starts for SamuelLPlaqson_87:

(Start: 74 @55782 has 85 MA's), (104, 55830), (132, 55911), (139, 55959), (146, 55974), (147, 55983), (150, 55989), (152, 56010), (153, 56022), (154, 56031), (156, 56049), (160, 56064), (164, 56076), (167, 56088), (173, 56109), (186, 56142), (191, 56160), (192, 56163), (197, 56205), (202, 56229), (206, 56244), (218, 56301), (220, 56307),

Gene: Scarlett_88 Start: 55509, Stop: 56123, Start Num: 64

Candidate Starts for Scarlett_88:

(27, 55389), (58, 55494), (Start: 64 @55509 has 4 MA's), (71, 55536), (99, 55608), (124, 55674), (141, 55764), (145, 55770), (158, 55854), (163, 55872), (172, 55899), (188, 55947), (192, 55968), (196, 56004), (197, 56007), (202, 56031), (204, 56037), (220, 56109),

Gene: SgtBeansprout_69 Start: 51228, Stop: 51872, Start Num: 61

Candidate Starts for SgtBeansprout_69:

(Start: 60 @51222 has 2 MA's), (Start: 61 @51228 has 6 MA's), (68, 51255), (76, 51282), (79, 51294), (88, 51309), (98, 51333), (100, 51339), (108, 51363), (111, 51372), (133, 51462), (145, 51507), (146, 51510), (150, 51525), (154, 51567), (157, 51588), (158, 51591), (159, 51597), (160, 51600), (164, 51612), (165, 51621), (173, 51645), (177, 51666), (181, 51678), (182, 51681), (185, 51690), (192, 51711), (196, 51750), (197, 51753), (204, 51783), (206, 51792), (217, 51846), (219, 51855),

Gene: Shadow1_91 Start: 55827, Stop: 56666, Start Num: 14

Candidate Starts for Shadow1_91:

(Start: 14 @55827 has 1 MA's), (Start: 16 @55833 has 9 MA's), (26, 55875), (51, 55983), (89, 56118), (99, 56160), (126, 56229), (132, 56256), (149, 56328), (158, 56397), (175, 56460), (184, 56472), (191, 56502), (194, 56517), (197, 56547), (201, 56568), (202, 56571), (206, 56586), (216, 56637), (218, 56643), (220, 56649),

Gene: Shaobing_87 Start: 56496, Stop: 57149, Start Num: 43

Candidate Starts for Shaobing_87:

(Start: 42 @56493 has 1 MA's), (Start: 43 @56496 has 3 MA's), (51, 56532), (Start: 56 @56547 has 12 MA's), (62, 56562), (75, 56595), (82, 56616), (95, 56625), (132, 56721), (133, 56733), (144, 56781), (146, 56787), (152, 56823), (154, 56844), (159, 56874), (169, 56910), (181, 56946), (187, 56967), (195, 57003), (196, 57027), (197, 57030), (210, 57090), (217, 57123), (220, 57135),

Gene: ShiaSurprise_88 Start: 55717, Stop: 56256, Start Num: 74

Candidate Starts for ShiaSurprise_88:

(23, 55561), (Start: 74 @55717 has 85 MA's), (132, 55846), (138, 55888), (139, 55894), (146, 55909), (147, 55918), (150, 55924), (152, 55945), (156, 55984), (160, 55999), (162, 56005), (164, 56011), (173, 56044), (184, 56068), (191, 56095), (197, 56140), (206, 56179), (218, 56236), (220, 56242),

Gene: SirPhilip_87 Start: 55717, Stop: 56277, Start Num: 91

Candidate Starts for SirPhilip_87:

(Start: 91 @55717 has 1 MA's), (141, 55894), (146, 55903), (158, 55984), (163, 56002), (169, 56026), (176, 56053), (196, 56155), (197, 56158), (213, 56239), (217, 56251), (220, 56263),

Gene: Slimphazie_89 Start: 55947, Stop: 56486, Start Num: 74

Candidate Starts for Slimphazie_89:

(Start: 74 @55947 has 85 MA's), (101, 55986), (132, 56076), (138, 56118), (139, 56124), (146, 56139), (147, 56148), (150, 56154), (152, 56175), (154, 56196), (156, 56214), (160, 56229), (162, 56235), (164, 56241), (173, 56274), (184, 56298), (191, 56325), (197, 56370), (206, 56409), (218, 56466), (220, 56472),

Gene: SoSeph_79 Start: 53442, Stop: 54089, Start Num: 56

Candidate Starts for SoSeph_79:

(Start: 56 @53442 has 12 MA's), (63, 53460), (73, 53496), (93, 53556), (97, 53571), (126, 53658), (146, 53736), (163, 53838), (164, 53841), (198, 53976), (204, 54000), (212, 54042), (219, 54072),

Gene: Spock_87 Start: 55521, Stop: 56060, Start Num: 74

Candidate Starts for Spock_87:

(23, 55365), (Start: 74 @55521 has 85 MA's), (132, 55650), (138, 55692), (139, 55698), (146, 55713), (147, 55722), (150, 55728), (152, 55749), (156, 55788), (160, 55803), (162, 55809), (164, 55815),

(173, 55848), (184, 55872), (191, 55899), (197, 55944), (206, 55983), (218, 56040), (220, 56046),

Gene: Stinson_88 Start: 55691, Stop: 56239, Start Num: 74

Candidate Starts for Stinson_88:

(Start: 74 @55691 has 85 MA's), (99, 55724), (126, 55802), (129, 55811), (132, 55829), (139, 55877), (146, 55892), (147, 55901), (150, 55907), (152, 55928), (154, 55949), (156, 55967), (160, 55982), (162, 55988), (164, 55994), (173, 56027), (184, 56051), (186, 56060), (197, 56123), (202, 56147), (203, 56150), (204, 56153), (218, 56219), (220, 56225),

Gene: Sulley_84 Start: 55116, Stop: 55655, Start Num: 74

Candidate Starts for Sulley_84:

(Start: 74 @55116 has 85 MA's), (125, 55215), (132, 55245), (139, 55293), (146, 55308), (147, 55317), (150, 55323), (152, 55344), (154, 55365), (156, 55383), (160, 55398), (164, 55410), (167, 55422), (173, 55443), (184, 55467), (191, 55494), (197, 55539), (202, 55563), (206, 55578), (218, 55635), (220, 55641),

Gene: Sunflower1121_91 Start: 55592, Stop: 56425, Start Num: 16

Candidate Starts for Sunflower1121_91:

(Start: 14 @55586 has 1 MA's), (Start: 16 @55592 has 9 MA's), (26, 55634), (51, 55742), (89, 55877), (99, 55919), (126, 55988), (132, 56015), (149, 56087), (158, 56156), (175, 56219), (184, 56231), (191, 56261), (194, 56276), (197, 56306), (201, 56327), (202, 56330), (206, 56345), (216, 56396), (218, 56402), (220, 56408),

Gene: Syra333_90 Start: 55739, Stop: 56482, Start Num: 29

Candidate Starts for Syra333_90:

(Start: 29 @55739 has 1 MA's), (32, 55745), (44, 55787), (69, 55856), (72, 55868), (81, 55895), (96, 55961), (99, 55970), (112, 56003), (119, 56018), (126, 56042), (147, 56141), (149, 56147), (152, 56168), (158, 56213), (175, 56276), (184, 56288), (191, 56318), (194, 56333), (197, 56363), (201, 56384), (202, 56387), (206, 56402), (216, 56453), (218, 56459), (220, 56465),

Gene: TClif_87 Start: 55031, Stop: 55636, Start Num: 74

Candidate Starts for TClif_87:

(45, 54941), (Start: 74 @55031 has 85 MA's), (85, 55070), (103, 55124), (110, 55145), (116, 55172), (125, 55193), (134, 55241), (136, 55256), (144, 55274), (147, 55283), (158, 55358), (162, 55373), (164, 55379), (169, 55400), (173, 55412), (191, 55475), (197, 55520), (206, 55559), (216, 55610), (220, 55622),

Gene: Tachez_87 Start: 55365, Stop: 55904, Start Num: 74

Candidate Starts for Tachez_87:

(23, 55209), (Start: 74 @55365 has 85 MA's), (132, 55494), (138, 55536), (139, 55542), (146, 55557), (147, 55566), (150, 55572), (152, 55593), (156, 55632), (160, 55647), (162, 55653), (164, 55659), (173, 55692), (184, 55716), (191, 55743), (197, 55788), (206, 55827), (218, 55884), (220, 55890),

Gene: TaiwanKao_88 Start: 55563, Stop: 56111, Start Num: 74

Candidate Starts for TaiwanKao_88:

(31, 55410), (38, 55437), (Start: 74 @55563 has 85 MA's), (84, 55596), (125, 55671), (129, 55683), (132, 55701), (139, 55749), (146, 55764), (147, 55773), (150, 55779), (152, 55800), (153, 55812), (154, 55821), (156, 55839), (160, 55854), (162, 55860), (164, 55866), (173, 55899), (184, 55923), (191, 55950), (197, 55995), (206, 56034), (218, 56091), (220, 56097),

Gene: Teejan_70 Start: 53841, Stop: 54485, Start Num: 61

Candidate Starts for Teejan_70:

(Start: 60 @53835 has 2 MA's), (Start: 61 @53841 has 6 MA's), (68, 53868), (76, 53895), (79, 53907), (88, 53922), (98, 53946), (100, 53952), (108, 53976), (111, 53985), (133, 54075), (145, 54120), (146, 54123), (150, 54138), (154, 54180), (157, 54201), (158, 54204), (159, 54210), (160, 54213), (164, 54225), (165, 54234), (173, 54258), (177, 54279), (181, 54291), (182, 54294), (185, 54303), (192, 54324), (196, 54363), (197, 54366), (204, 54396), (206, 54405), (217, 54459), (219, 54468),

Gene: Thyatira_82 Start: 55790, Stop: 56431, Start Num: 57

Candidate Starts for Thyatira_82:

(Start: 57 @55790 has 9 MA's), (Start: 61 @55805 has 6 MA's), (63, 55811), (73, 55847), (77, 55862), (93, 55907), (146, 56084), (147, 56093), (155, 56150), (180, 56231), (196, 56309), (212, 56384), (214, 56396), (220, 56417),

Gene: Tierra_94 Start: 57212, Stop: 57943, Start Num: 16

Candidate Starts for Tierra_94:

(Start: 16 @57212 has 9 MA's), (51, 57320), (80, 57359), (86, 57386), (89, 57395), (114, 57473), (126, 57506), (132, 57533), (140, 57578), (158, 57674), (175, 57737), (184, 57749), (191, 57779), (194, 57794), (197, 57824), (206, 57863), (218, 57920), (220, 57926),

Gene: TingHuaYa_91 Start: 56631, Stop: 57164, Start Num: 95

Candidate Starts for TingHuaYa_91:

(Start: 74 @56598 has 85 MA's), (95, 56631), (125, 56706), (137, 56781), (139, 56796), (146, 56811), (147, 56820), (150, 56826), (152, 56847), (154, 56868), (156, 56886), (158, 56892), (159, 56898), (164, 56913), (169, 56934), (173, 56946), (196, 57042), (204, 57075), (211, 57111), (217, 57138),

Gene: TiniBug_86 Start: 55892, Stop: 56437, Start Num: 74

Candidate Starts for TiniBug_86:

(53, 55856), (Start: 74 @55892 has 85 MA's), (104, 55940), (129, 56006), (132, 56027), (137, 56060), (139, 56075), (146, 56090), (147, 56099), (150, 56105), (152, 56126), (153, 56138), (154, 56147), (156, 56165), (160, 56180), (164, 56192), (167, 56204), (173, 56225), (184, 56249), (191, 56276), (192, 56279), (197, 56321), (202, 56345), (206, 56360), (218, 56417), (220, 56423),

Gene: Tiri_87 Start: 55187, Stop: 55798, Start Num: 74

Candidate Starts for Tiri_87:

(10, 54917), (31, 55034), (38, 55061), (Start: 74 @55187 has 85 MA's), (99, 55283), (125, 55358), (129, 55370), (132, 55388), (139, 55436), (146, 55451), (147, 55460), (150, 55466), (152, 55487), (154, 55508), (156, 55526), (160, 55541), (162, 55547), (164, 55553), (167, 55565), (173, 55586), (184, 55610), (191, 55637), (197, 55682), (206, 55721), (218, 55778), (220, 55784),

Gene: Topper_87 Start: 55520, Stop: 56059, Start Num: 74

Candidate Starts for Topper_87:

(23, 55364), (Start: 74 @55520 has 85 MA's), (132, 55649), (138, 55691), (139, 55697), (146, 55712), (147, 55721), (150, 55727), (152, 55748), (156, 55787), (160, 55802), (162, 55808), (164, 55814), (173, 55847), (184, 55871), (191, 55898), (197, 55943), (206, 55982), (218, 56039), (220, 56045),

Gene: Torres_70 Start: 53842, Stop: 54486, Start Num: 61

Candidate Starts for Torres_70:

(Start: 60 @53836 has 2 MA's), (Start: 61 @53842 has 6 MA's), (68, 53869), (76, 53896), (79, 53908), (88, 53923), (98, 53947), (100, 53953), (108, 53977), (111, 53986), (133, 54076), (145, 54121), (146, 54124), (150, 54139), (154, 54181), (157, 54202), (158, 54205), (159, 54211), (160, 54214), (164, 54226), (165, 54235), (173, 54259), (177, 54280), (181, 54292), (182, 54295), (185, 54304), (192, 54325), (196, 54364), (197, 54367), (204, 54397), (206, 54406), (217, 54460),

Gene: TreyKay_89 Start: 55920, Stop: 56471, Start Num: 74

Candidate Starts for TreyKay_89:

(Start: 14 @55740 has 1 MA's), (23, 55764), (Start: 74 @55920 has 85 MA's), (99, 55953), (125, 56031), (129, 56043), (132, 56061), (139, 56109), (146, 56124), (147, 56133), (150, 56139), (152, 56160), (154, 56181), (156, 56199), (160, 56214), (162, 56220), (164, 56226), (173, 56259), (184, 56283), (191, 56310), (196, 56352), (197, 56355), (202, 56379), (206, 56394), (218, 56451), (220, 56457),

Gene: TruffulaTree_89 Start: 55913, Stop: 56452, Start Num: 74

Candidate Starts for TruffulaTree_89:

(Start: 74 @55913 has 85 MA's), (101, 55952), (132, 56042), (138, 56084), (139, 56090), (146, 56105), (147, 56114), (150, 56120), (152, 56141), (154, 56162), (156, 56180), (160, 56195), (162, 56201), (164, 56207), (173, 56240), (184, 56264), (191, 56291), (197, 56336), (206, 56375), (218, 56432), (220, 56438),

Gene: Twitch_87 Start: 55522, Stop: 56061, Start Num: 74

Candidate Starts for Twitch_87:

(23, 55366), (Start: 74 @55522 has 85 MA's), (132, 55651), (138, 55693), (139, 55699), (146, 55714), (147, 55723), (150, 55729), (152, 55750), (156, 55789), (160, 55804), (162, 55810), (164, 55816), (173, 55849), (184, 55873), (191, 55900), (197, 55945), (206, 55984), (218, 56041), (220, 56047),

Gene: Unicorn_94 Start: 56932, Stop: 57726, Start Num: 16

Candidate Starts for Unicorn_94:

(Start: 16 @56932 has 9 MA's), (26, 56974), (51, 57082), (52, 57085), (70, 57112), (83, 57154), (87, 57175), (96, 57211), (99, 57220), (112, 57253), (126, 57292), (147, 57385), (149, 57391), (152, 57412), (158, 57457), (161, 57469), (175, 57520), (191, 57562), (194, 57577), (197, 57607), (206, 57646), (218, 57703), (220, 57709),

Gene: Urkel_87 Start: 55782, Stop: 56321, Start Num: 74

Candidate Starts for Urkel_87:

(Start: 74 @55782 has 85 MA's), (104, 55830), (132, 55911), (139, 55959), (146, 55974), (147, 55983), (150, 55989), (152, 56010), (153, 56022), (154, 56031), (156, 56049), (160, 56064), (164, 56076), (167, 56088), (173, 56109), (186, 56142), (191, 56160), (192, 56163), (197, 56205), (202, 56229), (206, 56244), (218, 56301), (220, 56307),

Gene: Validus_93 Start: 57272, Stop: 57934, Start Num: 42

Candidate Starts for Validus_93:

(Start: 42 @57272 has 1 MA's), (Start: 43 @57275 has 3 MA's), (47, 57302), (66, 57365), (68, 57371), (82, 57410), (95, 57419), (120, 57464), (125, 57482), (126, 57485), (128, 57491), (132, 57512), (139, 57557), (146, 57572), (150, 57587), (152, 57608), (154, 57629), (159, 57659), (165, 57683), (169, 57695), (173, 57707), (181, 57731), (195, 57788), (196, 57812), (204, 57845), (205, 57851), (211, 57881), (217, 57908), (220, 57920),

Gene: Veliki_88 Start: 55491, Stop: 56030, Start Num: 74

Candidate Starts for Veliki_88:

(23, 55335), (Start: 74 @55491 has 85 MA's), (132, 55620), (138, 55662), (139, 55668), (146, 55683), (147, 55692), (150, 55698), (152, 55719), (156, 55758), (160, 55773), (162, 55779), (164, 55785), (167, 55797), (173, 55818), (191, 55869), (197, 55914), (206, 55953), (218, 56010), (220, 56016),

Gene: ViviJ_84 Start: 53804, Stop: 54451, Start Num: 56

Candidate Starts for ViviJ_84:

(Start: 56 @53804 has 12 MA's), (63, 53822), (73, 53858), (93, 53918), (97, 53933), (126, 54020), (146, 54098), (163, 54200), (164, 54203), (198, 54338), (204, 54362), (212, 54404), (219, 54434),

Gene: Waterfoul_81 Start: 53860, Stop: 54501, Start Num: 57

Candidate Starts for Waterfoul_81:

(Start: 57 @53860 has 9 MA's), (Start: 61 @53875 has 6 MA's), (63, 53881), (73, 53917), (77, 53932), (93, 53977), (146, 54154), (180, 54301), (197, 54382), (204, 54412), (212, 54454), (219, 54484), (220, 54487),

Gene: Ximenita_93 Start: 56440, Stop: 57225, Start Num: 16

Candidate Starts for Ximenita_93:

(Start: 16 @56440 has 9 MA's), (40, 56521), (Start: 43 @56536 has 3 MA's), (44, 56539), (81, 56647), (96, 56713), (99, 56722), (112, 56755), (119, 56770), (126, 56794), (134, 56839), (147, 56887), (149, 56893), (152, 56914), (158, 56959), (175, 57022), (184, 57034), (191, 57064), (194, 57079), (197, 57109), (201, 57130), (202, 57133), (206, 57148), (218, 57205), (220, 57211),

Gene: YoureAdopted_86 Start: 55308, Stop: 55856, Start Num: 74

Candidate Starts for YoureAdopted_86:

(Start: 74 @55308 has 85 MA's), (99, 55341), (125, 55416), (129, 55428), (132, 55446), (139, 55494), (146, 55509), (147, 55518), (150, 55524), (152, 55545), (154, 55566), (156, 55584), (160, 55599), (162, 55605), (164, 55611), (173, 55644), (184, 55668), (191, 55695), (197, 55740), (206, 55779), (218, 55836), (220, 55842),

Gene: Yuna_90 Start: 57455, Stop: 58021, Start Num: 94

Candidate Starts for Yuna_90:

(Start: 94 @57455 has 1 MA's), (102, 57473), (133, 57587), (140, 57623), (150, 57650), (154, 57692), (158, 57716), (164, 57737), (168, 57752), (170, 57761), (178, 57800), (180, 57806), (188, 57839), (197, 57902), (201, 57923), (202, 57926), (204, 57932), (206, 57941), (211, 57968), (213, 57983), (217, 57995), (220, 58007),

Gene: Yunkel11_92 Start: 56143, Stop: 56694, Start Num: 74

Candidate Starts for Yunkel11_92:

(Start: 74 @56143 has 85 MA's), (95, 56176), (122, 56245), (129, 56263), (138, 56323), (139, 56329), (146, 56344), (150, 56359), (152, 56380), (154, 56401), (156, 56419), (158, 56425), (159, 56431), (165, 56455), (173, 56479), (184, 56503), (196, 56572), (205, 56611), (211, 56641), (217, 56668), (220, 56680),

Gene: Zabiza_83 Start: 51864, Stop: 52403, Start Num: 74

Candidate Starts for Zabiza_83:

(23, 51708), (Start: 74 @51864 has 85 MA's), (132, 51993), (138, 52035), (139, 52041), (146, 52056), (147, 52065), (150, 52071), (152, 52092), (156, 52131), (160, 52146), (162, 52152), (164, 52158), (167, 52170), (173, 52191), (191, 52242), (197, 52287), (206, 52326), (218, 52383), (220, 52389),

Gene: Zavala_89 Start: 55773, Stop: 56321, Start Num: 74

Candidate Starts for Zavala_89:

(Start: 74 @55773 has 85 MA's), (99, 55806), (125, 55881), (129, 55893), (132, 55911), (139, 55959), (146, 55974), (147, 55983), (150, 55989), (152, 56010), (154, 56031), (156, 56049), (160, 56064), (162, 56070), (164, 56076), (173, 56109), (184, 56133), (191, 56160), (197, 56205), (206, 56244), (218, 56301), (220, 56307),