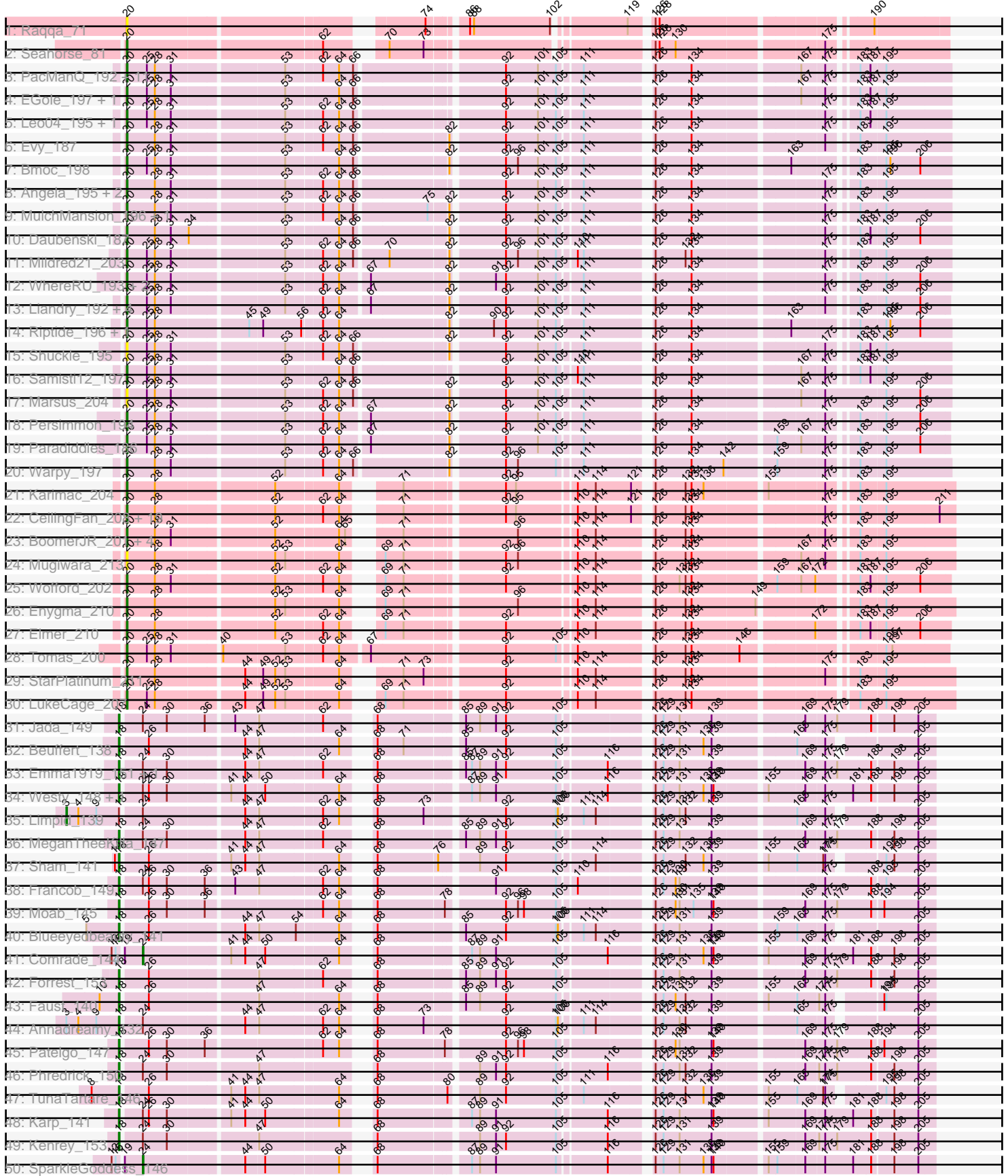
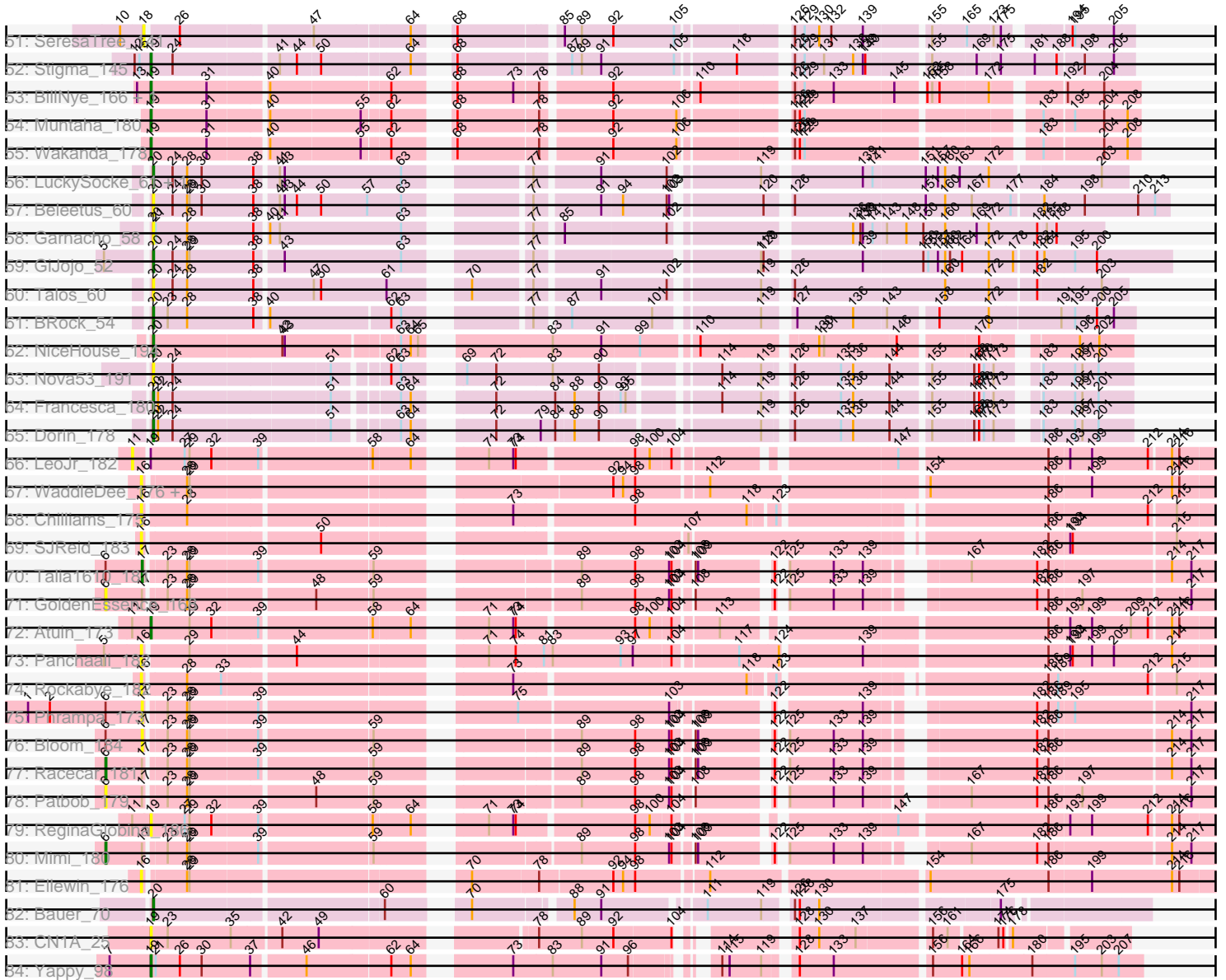


Pham 214061



Pham 214061



Note: Tracks are now grouped by subcluster and scaled. Switching in subcluster is indicated by changes in track color. Track scale is now set by default to display the region 30 bp upstream of start 1 to 30 bp downstream of the last possible start. If this default region is judged to be packed too tightly with annotated starts, the track will be further scaled to only show that region of the ORF with annotated starts. This action will be indicated by adding "Zoomed" to the title. For starts, yellow indicates the location of called starts comprised solely of Glimmer/GeneMark auto-annotations, green indicates the location of called starts with at least 1 manual gene annotation.

Pham 214061 Report

This analysis was run 02/22/25 on database version 588.

Pham number 214061 has 135 members, 28 are drafts.

Phages represented in each track:

- Track 1 : Raqqa_71
- Track 2 : Seahorse_81
- Track 3 : PacManQ_192, HangryHippo_193, Teutsch_192, Pepperwood_193, Scheme_198, BlueOtter_193, Sushi23_194, Watermoore_193, Cross_193, Tribute_191, Peebs_191, Lululemon_192
- Track 4 : EGole_197, Larnav_194
- Track 5 : Leo04_195, Cursive_194
- Track 6 : Evy_187
- Track 7 : Bmoc_198
- Track 8 : Angela_195, Jay2Jay_199, Targaryen_193
- Track 9 : MulchMansion_196, LilMartin_193
- Track 10 : Daubenski_187
- Track 11 : Mildred21_203
- Track 12 : WhereRU_193, Navo_187, Braelyn_190
- Track 13 : Liandry_192, Bartholomune_193, PinkiePie_192, Squillum_195, NootNoot_189
- Track 14 : Riptide_196, Anedea_200
- Track 15 : Shuckle_195
- Track 16 : Samisti12_197
- Track 17 : Marsus_204
- Track 18 : Persimmon_194
- Track 19 : Paradiddles_186
- Track 20 : Warpy_197
- Track 21 : Karimac_204
- Track 22 : CeilingFan_208, Spilled_210, Gibbi_211, SaltySpittoon_203, Rikishi_211, PumpkinSpice_206, Starbow_201, Bordeaux_202, Birchlyn_202, TomSawyer_208, Wipeout_195, Amabiko_208, Battuta_201, Spelly_207, KentuckyRacer_210, MindFlayer_197, IchabodCrane_199, JimJam_211, Quaran19_204, Jollison_201
- Track 23 : BoomerJR_201, Sollertia_202, Genie2_201, Stanimal_201, Yaboi_206
- Track 24 : Mugiwara_213
- Track 25 : Wofford_202
- Track 26 : Enygma_210
- Track 27 : Elmer_210
- Track 28 : Tomas_200
- Track 29 : StarPlatinum_211
- Track 30 : LukeCage_207
- Track 31 : Jada_149

- Track 32 : Beuffert_138
- Track 33 : Emma1919_151, Gilson_151
- Track 34 : Westy_148, Belfort_146
- Track 35 : Limpid_139
- Track 36 : MeganTheeKilla_147
- Track 37 : Sham_141
- Track 38 : Francob_149
- Track 39 : Moab_145
- Track 40 : Blueeyedbeauty_141
- Track 41 : Comrade_144
- Track 42 : Forrest_153
- Track 43 : Faust_140
- Track 44 : Annadreamy_132
- Track 45 : Patelgo_147
- Track 46 : Phredrick_150
- Track 47 : TunaTartare_146
- Track 48 : Karp_141
- Track 49 : Kenrey_153
- Track 50 : SparkleGoddess_146
- Track 51 : SeresaTree_141
- Track 52 : Stigma_145
- Track 53 : BillNye_166, Circinus_167
- Track 54 : Muntaha_180
- Track 55 : Wakanda_178
- Track 56 : LuckySocke_61, Alone3_61
- Track 57 : Beleetus_60
- Track 58 : Garnacho_58
- Track 59 : GiJojo_52
- Track 60 : Talos_60
- Track 61 : BRock_54
- Track 62 : NiceHouse_194
- Track 63 : Nova53_191
- Track 64 : Francesca_180
- Track 65 : Dorin_178
- Track 66 : LeoJr_182
- Track 67 : WaddleDee_176, DunneganBoMo_177
- Track 68 : Chilliams_175
- Track 69 : SJReid_183
- Track 70 : Talia1610_181
- Track 71 : GoldenEssence_168
- Track 72 : Atuin_173
- Track 73 : Panchaali_182
- Track 74 : Rockabye_182
- Track 75 : Phrampa_173
- Track 76 : Bloom_184
- Track 77 : Racecar_181
- Track 78 : Patbob_179
- Track 79 : ReginaGlobina_186
- Track 80 : Mimi_180
- Track 81 : Ellewin_176
- Track 82 : Bauer_70
- Track 83 : CN1A_25
- Track 84 : Yappy_98

Summary of Final Annotations (See graph section above for start numbers):

The start number called the most often in the published annotations is 20, it was called in 76 of the 107 non-draft genes in the pham.

Genes that call this "Most Annotated" start:

- Alone3_61, Amabiko_208, Anedea_200, Angela_195, BRock_54, Bartholomune_193, Battuta_201, Bauer_70, Beleetus_60, Birchlyn_202, BlueOtter_193, Bmoc_198, BoomerJR_201, Bordeaux_202, Braelyn_190, CeilingFan_208, Cross_193, Cursive_194, Daubenski_187, Dorin_178, EGole_197, Elmer_210, Enygma_210, Evy_187, Francesca_180, Garnacho_58, Genie2_201, GiJojo_52, Gibbi_211, HangryHippo_193, IchabodCrane_199, Jay2Jay_199, JimJam_211, Jollison_201, Karimac_204, KentuckyRacer_210, Larnav_194, Leo04_195, Liandry_192, LilMartin_193, LuckySocke_61, LukeCage_207, Lululemon_192, Marsus_204, Mildred21_203, MindFlayer_197, Mugiwara_213, MulchMansion_196, Navo_187, NiceHouse_194, NootNoot_189, Nova53_191, PacManQ_192, Paradiddles_186, Peebs_191, Pepperwood_193, Persimmon_194, PinkiePie_192, PumpkinSpice_206, Quarant19_204, Raqqa_71, Rikishi_211, Riptide_196, SaltySpittoon_203, Samisti12_197, Scheme_198, Seahorse_81, Shuckle_195, Sollertia_202, Spelly_207, Spilled_210, Squillium_195, Stanimal_201, StarPlatinum_211, Starbow_201, Sushi23_194, Talos_60, Targaryen_193, Teutsch_192, TomSawyer_208, Tomas_200, Tribute_191, Warpy_197, Watermoore_193, WhereRU_193, Wipeout_195, Wofford_202, Yaboi_206,

Genes that have the "Most Annotated" start but do not call it:

-

Genes that do not have the "Most Annotated" start:

- Annadreamy_132, Atuin_173, Belfort_146, Beuffert_138, BillNye_166, Bloom_184, Blueeyedbeauty_141, CN1A_25, Chilliams_175, Circinus_167, Comrade_144, DunneganBoMo_177, Ellewin_176, Emma1919_151, Faust_140, Forrest_153, Francob_149, Gilson_151, GoldenEssence_168, Jada_149, Karp_141, Kenrey_153, LeoJr_182, Limpid_139, MeganTheeKilla_147, Mimi_180, Moab_145, Muntaha_180, Panchaali_182, Patbob_179, Patelgo_147, Phrampa_173, Phredrick_150, Racecar_181, ReginaGlobina_186, Rockabye_182, SJReid_183, SeresaTree_141, Sham_141, SparkleGoddess_146, Stigma_145, Talia1610_181, TunaTartare_146, WaddleDee_176, Wakanda_178, Westy_148, Yappy_98,

Summary by start number:

Start 3:

- Found in 2 of 135 (1.5%) of genes in pham
- Manual Annotations of this start: 1 of 107
- Called 50.0% of time when present
- Phage (with cluster) where this start called: Limpid_139 (BK1),

Start 6:

- Found in 7 of 135 (5.2%) of genes in pham
- Manual Annotations of this start: 2 of 107

- Called 57.1% of time when present
- Phage (with cluster) where this start called: GoldenEssence_168 (FC), Mimi_180 (FC), Patbob_179 (FC), Racecar_181 (FC),

Start 11:

- Found in 3 of 135 (2.2%) of genes in pham
- No Manual Annotations of this start.
- Called 33.3% of time when present
- Phage (with cluster) where this start called: LeoJr_182 (FC),

Start 16:

- Found in 7 of 135 (5.2%) of genes in pham
- No Manual Annotations of this start.
- Called 100.0% of time when present
- Phage (with cluster) where this start called: Chilliams_175 (FC), DunneganBoMo_177 (FC), Ellewin_176 (FC), Panchaali_182 (FC), Rockabye_182 (FC), SJReid_183 (FC), WaddleDee_176 (FC),

Start 17:

- Found in 7 of 135 (5.2%) of genes in pham
- Manual Annotations of this start: 1 of 107
- Called 42.9% of time when present
- Phage (with cluster) where this start called: Bloom_184 (FC), Phrampa_173 (FC), Talia1610_181 (FC),

Start 18:

- Found in 21 of 135 (15.6%) of genes in pham
- Manual Annotations of this start: 18 of 107
- Called 95.2% of time when present
- Phage (with cluster) where this start called: Annadreamy_132 (BK1), Belfort_146 (BK1), Beuffert_138 (BK1), Blueeyedbeauty_141 (BK1), Emma1919_151 (BK1), Faust_140 (BK1), Forrest_153 (BK1), Francob_149 (BK1), Gilson_151 (BK1), Jada_149 (BK1), Karp_141 (BK1), Kenrey_153 (BK1), MeganTheeKilla_147 (BK1), Moab_145 (BK1), Patelgo_147 (BK1), Phredrick_150 (BK1), SeresaTree_141 (BK1), Sham_141 (BK1), TunaTartare_146 (BK1), Westy_148 (BK1),

Start 19:

- Found in 12 of 135 (8.9%) of genes in pham
- Manual Annotations of this start: 7 of 107
- Called 75.0% of time when present
- Phage (with cluster) where this start called: Atuin_173 (FC), BillNye_166 (BK2), CN1A_25 (singleton), Circinus_167 (BK2), Muntaha_180 (BK2), ReginaGlobina_186 (FC), Stigma_145 (BK1), Wakanda_178 (BK2), Yappy_98 (singleton),

Start 20:

- Found in 88 of 135 (65.2%) of genes in pham
- Manual Annotations of this start: 76 of 107
- Called 100.0% of time when present
- Phage (with cluster) where this start called: Alone3_61 (BS), Amabiko_208 (BE2), Anedea_200 (BE1), Angela_195 (BE1), BRock_54 (BS), Bartholomune_193 (BE1), Battuta_201 (BE2), Bauer_70 (FN), Beleetus_60 (BS), Birchlyn_202 (BE2), BlueOtter_193 (BE1), Bmoc_198 (BE1), BoomerJR_201 (BE2), Bordeaux_202 (BE2), Braelyn_190 (BE1), CeilingFan_208 (BE2), Cross_193 (BE1), Cursive_194 (BE1),

Daubenski_187 (BE1), Dorin_178 (CG), EGole_197 (BE1), Elmer_210 (BE2), Enygma_210 (BE2), Evy_187 (BE1), Francesca_180 (CG), Garnacho_58 (BS), Genie2_201 (BE2), GiJojo_52 (BS), Gibbi_211 (BE2), HangryHippo_193 (BE1), IchabodCrane_199 (BE2), Jay2Jay_199 (BE1), JimJam_211 (BE2), Jollison_201 (BE2), Karimac_204 (BE2), KentuckyRacer_210 (BE2), Larnav_194 (BE1), Leo04_195 (BE1), Liandry_192 (BE1), LilMartin_193 (BE1), LuckySocke_61 (BS), LukeCage_207 (BE2), Lululemon_192 (BE1), Marsus_204 (BE1), Mildred21_203 (BE1), MindFlayer_197 (BE2), Mugiwara_213 (BE2), MulchMansion_196 (BE1), Navo_187 (BE1), NiceHouse_194 (CE), NootNoot_189 (BE1), Nova53_191 (CG), PacManQ_192 (BE1), Paradiddles_186 (BE1), Peebs_191 (BE1), Pepperwood_193 (BE1), Persimmon_194 (BE1), PinkiePie_192 (BE1), PumpkinSpice_206 (BE2), Quarant19_204 (BE2), Raqqa_71 (AY), Rikishi_211 (BE2), Riptide_196 (BE1), SaltySpittoon_203 (BE2), Samisti12_197 (BE1), Scheme_198 (BE1), Seahorse_81 (AY), Shuckle_195 (BE1), Sollertia_202 (BE2), Spelly_207 (BE2), Spilled_210 (BE2), Squillium_195 (BE1), Stanimal_201 (BE2), StarPlatinum_211 (BE2), Starbow_201 (BE2), Sushi23_194 (BE1), Talos_60 (BS), Targaryen_193 (BE1), Teutsch_192 (BE1), TomSawyer_208 (BE2), Tomas_200 (BE2), Tribute_191 (BE1), Warpy_197 (BE1), Watermoore_193 (BE1), WhereRU_193 (BE1), Wipeout_195 (BE2), Wofford_202 (BE2), Yaboi_206 (BE2),

Start 24:

- Found in 23 of 135 (17.0%) of genes in pham
- Manual Annotations of this start: 2 of 107
- Called 8.7% of time when present
- Phage (with cluster) where this start called: Comrade_144 (BK1), SparkleGoddess_146 (BK1),

Summary by clusters:

There are 11 clusters represented in this pham: singleton, CG, CE, AY, FC, BK1, BK2, BS, BE2, BE1, FN,

Info for manual annotations of cluster AY:

- Start number 20 was manually annotated 1 time for cluster AY.

Info for manual annotations of cluster BE1:

- Start number 20 was manually annotated 37 times for cluster BE1.

Info for manual annotations of cluster BE2:

- Start number 20 was manually annotated 30 times for cluster BE2.

Info for manual annotations of cluster BK1:

- Start number 3 was manually annotated 1 time for cluster BK1.
- Start number 18 was manually annotated 18 times for cluster BK1.
- Start number 19 was manually annotated 1 time for cluster BK1.
- Start number 24 was manually annotated 2 times for cluster BK1.

Info for manual annotations of cluster BK2:

- Start number 19 was manually annotated 4 times for cluster BK2.

Info for manual annotations of cluster BS:

- Start number 20 was manually annotated 4 times for cluster BS.

Info for manual annotations of cluster CE:

- Start number 20 was manually annotated 1 time for cluster CE.

Info for manual annotations of cluster CG:

- Start number 20 was manually annotated 2 times for cluster CG.

Info for manual annotations of cluster FC:

- Start number 6 was manually annotated 2 times for cluster FC.
- Start number 17 was manually annotated 1 time for cluster FC.
- Start number 19 was manually annotated 1 time for cluster FC.

Info for manual annotations of cluster FN:

- Start number 20 was manually annotated 1 time for cluster FN.

Gene Information:

Gene: Alone3_61 Start: 19832, Stop: 20914, Start Num: 20

Candidate Starts for Alone3_61:

(Start: 20 @19832 has 76 MA's), (Start: 24 @19856 has 2 MA's), (28, 19874), (30, 19892), (38, 19955), (41, 19979), (43, 19985), (63, 20129), (77, 20246), (91, 20318), (102, 20396), (119, 20492), (139, 20600), (141, 20612), (151, 20675), (157, 20690), (160, 20699), (163, 20717), (172, 20753), (203, 20882),

Gene: Amabiko_208 Start: 101283, Stop: 102359, Start Num: 20

Candidate Starts for Amabiko_208:

(Start: 20 @101283 has 76 MA's), (28, 101325), (52, 101490), (62, 101553), (64, 101577), (71, 101634), (92, 101766), (95, 101781), (110, 101862), (114, 101889), (121, 101940), (126, 101958), (132, 102000), (134, 102009), (175, 102189), (183, 102222), (195, 102258), (211, 102336),

Gene: Anedea_200 Start: 101122, Stop: 102234, Start Num: 20

Candidate Starts for Anedea_200:

(Start: 20 @101122 has 76 MA's), (25, 101152), (28, 101164), (45, 101293), (49, 101311), (56, 101368), (62, 101392), (64, 101416), (82, 101572), (90, 101626), (92, 101644), (101, 101692), (105, 101719), (111, 101752), (126, 101839), (134, 101890), (163, 102025), (183, 102103), (195, 102139), (196, 102145), (206, 102190),

Gene: Angela_195 Start: 100417, Stop: 101517, Start Num: 20

Candidate Starts for Angela_195:

(Start: 20 @100417 has 76 MA's), (28, 100459), (31, 100483), (53, 100639), (62, 100687), (64, 100711), (66, 100732), (92, 100930), (101, 100978), (105, 101005), (111, 101035), (126, 101122), (134, 101173), (175, 101353), (183, 101386), (195, 101422),

Gene: Annadreamy_132 Start: 75722, Stop: 76771, Start Num: 18

Candidate Starts for Annadreamy_132:

(Start: 3 @75644 has 1 MA's), (4, 75662), (9, 75689), (Start: 18 @75722 has 18 MA's), (Start: 24 @75749 has 2 MA's), (44, 75890), (47, 75908), (62, 75992), (64, 76016), (68, 76040), (73, 76109), (92, 76214), (105, 76289), (106, 76292), (111, 76319), (114, 76337), (126, 76403), (129, 76412), (131, 76436), (132, 76445), (139, 76484), (165, 76595), (175, 76634), (205, 76748),

Gene: Atuin_173 Start: 119739, Stop: 120923, Start Num: 19

Candidate Starts for Atuin_173:

(11, 119724), (Start: 19 @119739 has 7 MA's), (29, 119787), (32, 119814), (39, 119868), (58, 119997), (64, 120039), (71, 120096), (73, 120126), (74, 120129), (98, 120264), (100, 120282), (104, 120306), (113, 120354), (186, 120708), (193, 120732), (199, 120759), (209, 120807), (212, 120828), (214, 120852), (216, 120861),

Gene: BRock_54 Start: 17347, Stop: 18426, Start Num: 20

Candidate Starts for BRock_54:

(Start: 20 @17347 has 76 MA's), (23, 17365), (28, 17389), (38, 17470), (40, 17482), (62, 17626), (63, 17638), (77, 17755), (87, 17791), (101, 17890), (119, 18004), (127, 18031), (136, 18100), (143, 18139), (158, 18193), (172, 18253), (191, 18337), (195, 18352), (200, 18379), (205, 18400),

Gene: Bartholomune_193 Start: 100267, Stop: 101364, Start Num: 20

Candidate Starts for Bartholomune_193:

(Start: 20 @100267 has 76 MA's), (25, 100297), (28, 100309), (31, 100333), (53, 100489), (62, 100537), (64, 100561), (67, 100600), (82, 100708), (92, 100780), (101, 100828), (105, 100855), (111, 100885), (126, 100972), (134, 101023), (175, 101203), (183, 101236), (195, 101272), (206, 101323),

Gene: Battuta_201 Start: 100599, Stop: 101675, Start Num: 20

Candidate Starts for Battuta_201:

(Start: 20 @100599 has 76 MA's), (28, 100641), (52, 100806), (62, 100869), (64, 100893), (71, 100950), (92, 101082), (95, 101097), (110, 101178), (114, 101205), (121, 101256), (126, 101274), (132, 101316), (134, 101325), (175, 101505), (183, 101538), (195, 101574), (211, 101652),

Gene: Bauer_70 Start: 38671, Stop: 39738, Start Num: 20

Candidate Starts for Bauer_70:

(Start: 20 @38671 has 76 MA's), (60, 38938), (70, 39007), (88, 39112), (91, 39145), (111, 39253), (119, 39319), (126, 39343), (128, 39349), (130, 39373), (175, 39577),

Gene: Beleetus_60 Start: 19477, Stop: 20610, Start Num: 20

Candidate Starts for Beleetus_60:

(Start: 20 @19477 has 76 MA's), (Start: 24 @19501 has 2 MA's), (28, 19519), (29, 19522), (30, 19537), (38, 19600), (41, 19624), (43, 19630), (44, 19645), (50, 19675), (57, 19732), (63, 19774), (77, 19891), (91, 19963), (94, 19987), (102, 20041), (103, 20044), (120, 20140), (126, 20161), (151, 20320), (160, 20344), (167, 20377), (177, 20425), (184, 20458), (198, 20506), (210, 20572), (213, 20593),

Gene: Belfort_146 Start: 82898, Stop: 83965, Start Num: 18

Candidate Starts for Belfort_146:

(Start: 18 @82898 has 18 MA's), (Start: 24 @82925 has 2 MA's), (26, 82934), (30, 82961), (41, 83045), (44, 83066), (50, 83093), (64, 83192), (68, 83216), (87, 83339), (89, 83351), (91, 83375), (105, 83465), (116, 83531), (126, 83579), (129, 83588), (131, 83612), (136, 83648), (139, 83660), (140, 83663), (155, 83732), (169, 83783), (175, 83810), (181, 83852), (188, 83876), (198, 83906), (205, 83942),

Gene: Beuffert_138 Start: 80211, Stop: 81260, Start Num: 18

Candidate Starts for Beuffert_138:

(Start: 18 @80211 has 18 MA's), (26, 80247), (44, 80379), (47, 80397), (64, 80505), (68, 80529), (71, 80568), (85, 80643), (92, 80703), (105, 80778), (126, 80892), (129, 80901), (131, 80925), (136, 80961), (139, 80973), (165, 81084), (175, 81123), (205, 81237),

Gene: BillNye_166 Start: 93378, Stop: 94433, Start Num: 19

Candidate Starts for BillNye_166:

(13, 93369), (Start: 19 @93378 has 7 MA's), (31, 93447), (40, 93513), (62, 93648), (68, 93696), (73, 93765), (78, 93792), (92, 93870), (110, 93966), (126, 94059), (129, 94068), (133, 94104), (145, 94176), (152, 94206), (155, 94212), (158, 94221), (172, 94278), (192, 94347), (204, 94392),

Gene: Birchlyn_202 Start: 98531, Stop: 99607, Start Num: 20

Candidate Starts for Birchlyn_202:

(Start: 20 @98531 has 76 MA's), (28, 98573), (52, 98738), (62, 98801), (64, 98825), (71, 98882), (92, 99014), (95, 99029), (110, 99110), (114, 99137), (121, 99188), (126, 99206), (132, 99248), (134, 99257), (175, 99437), (183, 99470), (195, 99506), (211, 99584),

Gene: Bloom_184 Start: 119561, Stop: 120721, Start Num: 17

Candidate Starts for Bloom_184:

(Start: 6 @119516 has 2 MA's), (Start: 17 @119561 has 1 MA's), (23, 119582), (28, 119606), (29, 119609), (39, 119690), (59, 119819), (89, 120020), (98, 120086), (103, 120128), (104, 120131), (108, 120149), (109, 120152), (122, 120230), (125, 120233), (133, 120287), (139, 120323), (182, 120494), (186, 120506), (214, 120650), (217, 120674),

Gene: BlueOtter_193 Start: 101061, Stop: 102161, Start Num: 20

Candidate Starts for BlueOtter_193:

(Start: 20 @101061 has 76 MA's), (25, 101091), (28, 101103), (31, 101127), (53, 101283), (62, 101331), (64, 101355), (66, 101376), (92, 101574), (101, 101622), (105, 101649), (111, 101679), (126, 101766), (134, 101817), (167, 101964), (175, 101997), (183, 102030), (187, 102045), (195, 102066),

Gene: Blueeyedbeauty_141 Start: 80155, Stop: 81204, Start Num: 18

Candidate Starts for Blueeyedbeauty_141:

(5, 80107), (Start: 18 @80155 has 18 MA's), (26, 80191), (44, 80323), (47, 80341), (54, 80395), (64, 80449), (68, 80473), (85, 80587), (92, 80647), (105, 80722), (106, 80725), (111, 80752), (114, 80770), (126, 80836), (129, 80845), (131, 80869), (139, 80917), (159, 81001), (165, 81028), (175, 81067), (205, 81181),

Gene: Bmoc_198 Start: 101085, Stop: 102185, Start Num: 20

Candidate Starts for Bmoc_198:

(Start: 20 @101085 has 76 MA's), (25, 101115), (28, 101127), (31, 101151), (53, 101307), (64, 101379), (66, 101400), (82, 101526), (92, 101598), (96, 101616), (101, 101646), (105, 101673), (111, 101703), (126, 101790), (134, 101841), (163, 101976), (183, 102054), (195, 102090), (196, 102096), (206, 102141),

Gene: BoomerJR_201 Start: 101183, Stop: 102259, Start Num: 20

Candidate Starts for BoomerJR_201:

(Start: 20 @101183 has 76 MA's), (28, 101225), (31, 101249), (52, 101390), (64, 101477), (65, 101486), (71, 101534), (96, 101684), (110, 101762), (114, 101789), (126, 101858), (132, 101900), (134, 101909), (175, 102089), (183, 102122), (195, 102158),

Gene: Bordeaux_202 Start: 101182, Stop: 102258, Start Num: 20

Candidate Starts for Bordeaux_202:

(Start: 20 @101182 has 76 MA's), (28, 101224), (52, 101389), (62, 101452), (64, 101476), (71, 101533), (92, 101665), (95, 101680), (110, 101761), (114, 101788), (121, 101839), (126, 101857), (132, 101899), (134, 101908), (175, 102088), (183, 102121), (195, 102157), (211, 102235),

Gene: Braelyn_190 Start: 99917, Stop: 101014, Start Num: 20

Candidate Starts for Braelyn_190:

(Start: 20 @99917 has 76 MA's), (25, 99947), (28, 99959), (31, 99983), (53, 100139), (62, 100187), (64, 100211), (67, 100250), (82, 100358), (91, 100415), (92, 100430), (101, 100478), (105, 100505), (111, 100535), (126, 100622), (134, 100673), (175, 100853), (183, 100886), (195, 100922), (206, 100973),

Gene: CN1A_25 Start: 16090, Stop: 17124, Start Num: 19

Candidate Starts for CN1A_25:

(Start: 19 @16090 has 7 MA's), (23, 16111), (35, 16189), (42, 16246), (49, 16291), (78, 16510), (89, 16561), (92, 16600), (104, 16669), (128, 16765), (130, 16789), (137, 16831), (156, 16912), (161, 16930), (174, 16981), (176, 16987), (178, 16993),

Gene: CeilingFan_208 Start: 101976, Stop: 103052, Start Num: 20

Candidate Starts for CeilingFan_208:

(Start: 20 @101976 has 76 MA's), (28, 102018), (52, 102183), (62, 102246), (64, 102270), (71, 102327), (92, 102459), (95, 102474), (110, 102555), (114, 102582), (121, 102633), (126, 102651), (132, 102693), (134, 102702), (175, 102882), (183, 102915), (195, 102951), (211, 103029),

Gene: Chilliams_175 Start: 109391, Stop: 110590, Start Num: 16

Candidate Starts for Chilliams_175:

(16, 109391), (28, 109439), (73, 109781), (98, 109919), (118, 110057), (123, 110084), (186, 110372), (212, 110492), (215, 110522),

Gene: Circinus_167 Start: 93344, Stop: 94399, Start Num: 19

Candidate Starts for Circinus_167:

(13, 93335), (Start: 19 @93344 has 7 MA's), (31, 93413), (40, 93479), (62, 93614), (68, 93662), (73, 93731), (78, 93758), (92, 93836), (110, 93932), (126, 94025), (129, 94034), (133, 94070), (145, 94142), (152, 94172), (155, 94178), (158, 94187), (172, 94244), (192, 94313), (204, 94358),

Gene: Comrade_144 Start: 83124, Stop: 84164, Start Num: 24

Candidate Starts for Comrade_144:

(12, 83085), (15, 83091), (Start: 19 @83097 has 7 MA's), (Start: 24 @83124 has 2 MA's), (41, 83244), (44, 83265), (50, 83292), (64, 83391), (68, 83415), (87, 83538), (89, 83550), (91, 83574), (105, 83664), (116, 83730), (126, 83778), (129, 83787), (131, 83811), (136, 83847), (139, 83859), (140, 83862), (155, 83931), (169, 83982), (175, 84009), (181, 84051), (188, 84075), (198, 84105), (205, 84141),

Gene: Cross_193 Start: 101706, Stop: 102806, Start Num: 20

Candidate Starts for Cross_193:

(Start: 20 @101706 has 76 MA's), (25, 101736), (28, 101748), (31, 101772), (53, 101928), (62, 101976), (64, 102000), (66, 102021), (92, 102219), (101, 102267), (105, 102294), (111, 102324), (126, 102411), (134, 102462), (167, 102609), (175, 102642), (183, 102675), (187, 102690), (195, 102711),

Gene: Cursive_194 Start: 100608, Stop: 101708, Start Num: 20

Candidate Starts for Cursive_194:

(Start: 20 @100608 has 76 MA's), (25, 100638), (28, 100650), (31, 100674), (53, 100830), (62, 100878), (64, 100902), (66, 100923), (92, 101121), (101, 101169), (105, 101196), (111, 101226), (126, 101313), (134, 101364), (175, 101544), (183, 101577), (187, 101592), (195, 101613),

Gene: Daubenski_187 Start: 101546, Stop: 102646, Start Num: 20

Candidate Starts for Daubenski_187:

(Start: 20 @101546 has 76 MA's), (28, 101588), (31, 101612), (34, 101636), (53, 101768), (64, 101840), (66, 101861), (82, 101987), (92, 102059), (101, 102107), (105, 102134), (111, 102164), (126, 102251), (134, 102302), (175, 102482), (183, 102515), (187, 102530), (195, 102551), (206, 102602),

Gene: Dorin_178 Start: 97039, Stop: 98076, Start Num: 20

Candidate Starts for Dorin_178:

(Start: 20 @97039 has 76 MA's), (22, 97045), (Start: 24 @97063 has 2 MA's), (51, 97249), (63, 97315), (64, 97327), (72, 97393), (79, 97447), (84, 97465), (88, 97483), (90, 97513), (119, 97684), (126, 97708), (135, 97762), (136, 97777), (144, 97822), (155, 97864), (168, 97912), (170, 97918), (171,

97924), (173, 97933), (183, 97969), (195, 98008), (197, 98017), (201, 98035),

Gene: DunneganBoMo_177 Start: 116408, Stop: 117622, Start Num: 16

Candidate Starts for DunneganBoMo_177:

(16, 116408), (28, 116453), (29, 116456), (92, 116906), (94, 116918), (98, 116933), (112, 117014), (154, 117257), (186, 117401), (199, 117452), (214, 117551), (216, 117560),

Gene: EGole_197 Start: 103358, Stop: 104458, Start Num: 20

Candidate Starts for EGole_197:

(Start: 20 @103358 has 76 MA's), (25, 103388), (28, 103400), (31, 103424), (53, 103580), (64, 103652), (66, 103673), (92, 103871), (101, 103919), (105, 103946), (111, 103976), (126, 104063), (134, 104114), (167, 104261), (175, 104294), (183, 104327), (187, 104342), (195, 104363),

Gene: Ellewin_176 Start: 116583, Stop: 117797, Start Num: 16

Candidate Starts for Ellewin_176:

(16, 116583), (28, 116628), (29, 116631), (70, 116919), (78, 116997), (92, 117081), (94, 117093), (98, 117108), (112, 117189), (154, 117432), (186, 117576), (199, 117627), (214, 117726), (216, 117735),

Gene: Elmer_210 Start: 104286, Stop: 105353, Start Num: 20

Candidate Starts for Elmer_210:

(Start: 20 @104286 has 76 MA's), (28, 104328), (52, 104493), (62, 104556), (64, 104580), (69, 104610), (71, 104637), (92, 104769), (110, 104865), (114, 104892), (126, 104961), (132, 105003), (134, 105012), (172, 105180), (183, 105225), (187, 105240), (195, 105261), (206, 105312),

Gene: Emma1919_151 Start: 82515, Stop: 83582, Start Num: 18

Candidate Starts for Emma1919_151:

(Start: 18 @82515 has 18 MA's), (Start: 24 @82542 has 2 MA's), (30, 82578), (44, 82683), (47, 82701), (62, 82785), (68, 82833), (85, 82947), (87, 82956), (89, 82968), (91, 82992), (92, 83007), (105, 83082), (116, 83148), (126, 83196), (129, 83205), (131, 83229), (139, 83277), (169, 83400), (175, 83427), (179, 83445), (188, 83493), (198, 83523), (205, 83559),

Gene: Enygma_210 Start: 103999, Stop: 105075, Start Num: 20

Candidate Starts for Enygma_210:

(Start: 20 @103999 has 76 MA's), (28, 104041), (52, 104206), (53, 104221), (64, 104293), (69, 104323), (71, 104350), (96, 104500), (110, 104578), (114, 104605), (126, 104674), (132, 104716), (134, 104725), (149, 104818), (183, 104938), (195, 104974),

Gene: Evy_187 Start: 101752, Stop: 102852, Start Num: 20

Candidate Starts for Evy_187:

(Start: 20 @101752 has 76 MA's), (28, 101794), (31, 101818), (53, 101974), (62, 102022), (64, 102046), (66, 102067), (82, 102193), (92, 102265), (101, 102313), (105, 102340), (111, 102370), (126, 102457), (134, 102508), (175, 102688), (183, 102721), (195, 102757),

Gene: Faust_140 Start: 82261, Stop: 83310, Start Num: 18

Candidate Starts for Faust_140:

(10, 82234), (Start: 18 @82261 has 18 MA's), (26, 82297), (47, 82447), (64, 82555), (68, 82579), (85, 82693), (89, 82714), (92, 82753), (105, 82828), (126, 82942), (129, 82951), (130, 82969), (132, 82984), (139, 83023), (155, 83095), (165, 83134), (173, 83164), (175, 83173), (194, 83236), (195, 83239), (205, 83287),

Gene: Forrest_153 Start: 83609, Stop: 84676, Start Num: 18

Candidate Starts for Forrest_153:

(Start: 18 @83609 has 18 MA's), (26, 83645), (47, 83795), (62, 83879), (68, 83927), (85, 84041), (89, 84062), (91, 84086), (92, 84101), (105, 84176), (126, 84290), (129, 84299), (131, 84323), (139, 84371), (169, 84494), (175, 84521), (179, 84539), (188, 84587), (198, 84617), (205, 84653),

Gene: Francesca_180 Start: 97958, Stop: 98995, Start Num: 20

Candidate Starts for Francesca_180:

(Start: 20 @97958 has 76 MA's), (22, 97964), (Start: 24 @97982 has 2 MA's), (51, 98168), (63, 98234), (64, 98246), (72, 98312), (84, 98384), (88, 98402), (90, 98432), (93, 98456), (95, 98462), (114, 98555), (119, 98603), (126, 98627), (135, 98681), (136, 98696), (144, 98741), (155, 98783), (168, 98831), (170, 98837), (171, 98843), (173, 98852), (183, 98888), (195, 98927), (197, 98936), (201, 98954),

Gene: Francob_149 Start: 83022, Stop: 84089, Start Num: 18

Candidate Starts for Francob_149:

(Start: 18 @83022 has 18 MA's), (Start: 24 @83049 has 2 MA's), (26, 83058), (30, 83085), (36, 83139), (43, 83175), (47, 83208), (62, 83292), (64, 83316), (68, 83340), (91, 83499), (105, 83589), (110, 83610), (126, 83703), (129, 83712), (130, 83730), (131, 83736), (139, 83784), (175, 83934), (188, 84000), (195, 84018), (205, 84066),

Gene: Garnacho_58 Start: 18975, Stop: 20033, Start Num: 20

Candidate Starts for Garnacho_58:

(Start: 20 @18975 has 76 MA's), (21, 18978), (28, 19017), (38, 19098), (40, 19110), (41, 19122), (63, 19272), (77, 19389), (85, 19416), (102, 19539), (136, 19731), (138, 19740), (139, 19743), (141, 19755), (143, 19770), (148, 19794), (150, 19815), (160, 19842), (169, 19881), (172, 19896), (182, 19956), (185, 19965), (188, 19977),

Gene: Genie2_201 Start: 101297, Stop: 102373, Start Num: 20

Candidate Starts for Genie2_201:

(Start: 20 @101297 has 76 MA's), (28, 101339), (31, 101363), (52, 101504), (64, 101591), (65, 101600), (71, 101648), (96, 101798), (110, 101876), (114, 101903), (126, 101972), (132, 102014), (134, 102023), (175, 102203), (183, 102236), (195, 102272),

Gene: GiJojo_52 Start: 18968, Stop: 20104, Start Num: 20

Candidate Starts for GiJojo_52:

(5, 18917), (Start: 20 @18968 has 76 MA's), (Start: 24 @18992 has 2 MA's), (28, 19010), (29, 19013), (38, 19091), (43, 19121), (63, 19265), (77, 19382), (119, 19628), (120, 19631), (139, 19736), (150, 19808), (153, 19814), (157, 19826), (160, 19835), (162, 19841), (164, 19856), (172, 19889), (178, 19919), (182, 19943), (184, 19949), (195, 19985), (200, 20012),

Gene: Gibbi_211 Start: 101469, Stop: 102545, Start Num: 20

Candidate Starts for Gibbi_211:

(Start: 20 @101469 has 76 MA's), (28, 101511), (52, 101676), (62, 101739), (64, 101763), (71, 101820), (92, 101952), (95, 101967), (110, 102048), (114, 102075), (121, 102126), (126, 102144), (132, 102186), (134, 102195), (175, 102375), (183, 102408), (195, 102444), (211, 102522),

Gene: Gilson_151 Start: 82477, Stop: 83544, Start Num: 18

Candidate Starts for Gilson_151:

(Start: 18 @82477 has 18 MA's), (Start: 24 @82504 has 2 MA's), (30, 82540), (44, 82645), (47, 82663), (62, 82747), (68, 82795), (85, 82909), (87, 82918), (89, 82930), (91, 82954), (92, 82969), (105, 83044), (116, 83110), (126, 83158), (129, 83167), (131, 83191), (139, 83239), (169, 83362), (175, 83389), (179, 83407), (188, 83455), (198, 83485), (205, 83521),

Gene: GoldenEssence_168 Start: 113083, Stop: 114288, Start Num: 6

Candidate Starts for GoldenEssence_168:

(Start: 6 @113083 has 2 MA's), (Start: 17 @113128 has 1 MA's), (23, 113149), (28, 113173), (29, 113176), (48, 113320), (59, 113386), (89, 113587), (98, 113653), (103, 113695), (104, 113698), (108, 113716), (122, 113797), (125, 113800), (133, 113854), (139, 113890), (182, 114061), (186, 114073), (197, 114112), (217, 114241),

Gene: HangryHippo_193 Start: 101061, Stop: 102161, Start Num: 20

Candidate Starts for HangryHippo_193:

(Start: 20 @101061 has 76 MA's), (25, 101091), (28, 101103), (31, 101127), (53, 101283), (62, 101331), (64, 101355), (66, 101376), (92, 101574), (101, 101622), (105, 101649), (111, 101679), (126, 101766), (134, 101817), (167, 101964), (175, 101997), (183, 102030), (187, 102045), (195, 102066),

Gene: IchabodCrane_199 Start: 100984, Stop: 102060, Start Num: 20

Candidate Starts for IchabodCrane_199:

(Start: 20 @100984 has 76 MA's), (28, 101026), (52, 101191), (62, 101254), (64, 101278), (71, 101335), (92, 101467), (95, 101482), (110, 101563), (114, 101590), (121, 101641), (126, 101659), (132, 101701), (134, 101710), (175, 101890), (183, 101923), (195, 101959), (211, 102037),

Gene: Jada_149 Start: 82306, Stop: 83373, Start Num: 18

Candidate Starts for Jada_149:

(Start: 18 @82306 has 18 MA's), (Start: 24 @82333 has 2 MA's), (30, 82369), (36, 82423), (43, 82459), (47, 82492), (62, 82576), (68, 82624), (85, 82738), (89, 82759), (91, 82783), (92, 82798), (105, 82873), (126, 82987), (129, 82996), (131, 83020), (139, 83068), (169, 83191), (175, 83218), (179, 83236), (188, 83284), (198, 83314), (205, 83350),

Gene: Jay2Jay_199 Start: 101904, Stop: 103004, Start Num: 20

Candidate Starts for Jay2Jay_199:

(Start: 20 @101904 has 76 MA's), (28, 101946), (31, 101970), (53, 102126), (62, 102174), (64, 102198), (66, 102219), (92, 102417), (101, 102465), (105, 102492), (111, 102522), (126, 102609), (134, 102660), (175, 102840), (183, 102873), (195, 102909),

Gene: JimJam_211 Start: 102905, Stop: 103981, Start Num: 20

Candidate Starts for JimJam_211:

(Start: 20 @102905 has 76 MA's), (28, 102947), (52, 103112), (62, 103175), (64, 103199), (71, 103256), (92, 103388), (95, 103403), (110, 103484), (114, 103511), (121, 103562), (126, 103580), (132, 103622), (134, 103631), (175, 103811), (183, 103844), (195, 103880), (211, 103958),

Gene: Jollison_201 Start: 101115, Stop: 102191, Start Num: 20

Candidate Starts for Jollison_201:

(Start: 20 @101115 has 76 MA's), (28, 101157), (52, 101322), (62, 101385), (64, 101409), (71, 101466), (92, 101598), (95, 101613), (110, 101694), (114, 101721), (121, 101772), (126, 101790), (132, 101832), (134, 101841), (175, 102021), (183, 102054), (195, 102090), (211, 102168),

Gene: Karimac_204 Start: 101309, Stop: 102385, Start Num: 20

Candidate Starts for Karimac_204:

(Start: 20 @101309 has 76 MA's), (28, 101351), (52, 101516), (64, 101603), (71, 101660), (92, 101792), (95, 101807), (110, 101888), (114, 101915), (121, 101966), (126, 101984), (132, 102026), (134, 102035), (136, 102053), (155, 102137), (175, 102215), (183, 102248), (195, 102284),

Gene: Karp_141 Start: 82325, Stop: 83392, Start Num: 18

Candidate Starts for Karp_141:

(Start: 18 @82325 has 18 MA's), (Start: 24 @82352 has 2 MA's), (26, 82361), (30, 82388), (41, 82472), (44, 82493), (50, 82520), (64, 82619), (68, 82643), (87, 82766), (89, 82778), (91, 82802), (105, 82892), (116, 82958), (126, 83006), (129, 83015), (131, 83039), (139, 83087), (140, 83090), (155, 83159),

(169, 83210), (175, 83237), (181, 83279), (188, 83303), (198, 83333), (205, 83369),

Gene: Kenrey_153 Start: 83636, Stop: 84703, Start Num: 18

Candidate Starts for Kenrey_153:

(Start: 18 @83636 has 18 MA's), (Start: 24 @83663 has 2 MA's), (30, 83699), (47, 83822), (68, 83954), (89, 84089), (91, 84113), (92, 84128), (105, 84203), (116, 84269), (126, 84317), (129, 84326), (131, 84350), (139, 84398), (169, 84521), (173, 84539), (175, 84548), (179, 84566), (188, 84614), (198, 84644), (205, 84680),

Gene: KentuckyRacer_210 Start: 102820, Stop: 103896, Start Num: 20

Candidate Starts for KentuckyRacer_210:

(Start: 20 @102820 has 76 MA's), (28, 102862), (52, 103027), (62, 103090), (64, 103114), (71, 103171), (92, 103303), (95, 103318), (110, 103399), (114, 103426), (121, 103477), (126, 103495), (132, 103537), (134, 103546), (175, 103726), (183, 103759), (195, 103795), (211, 103873),

Gene: Larnav_194 Start: 101681, Stop: 102781, Start Num: 20

Candidate Starts for Larnav_194:

(Start: 20 @101681 has 76 MA's), (25, 101711), (28, 101723), (31, 101747), (53, 101903), (64, 101975), (66, 101996), (92, 102194), (101, 102242), (105, 102269), (111, 102299), (126, 102386), (134, 102437), (167, 102584), (175, 102617), (183, 102650), (187, 102665), (195, 102686),

Gene: Leo04_195 Start: 102072, Stop: 103172, Start Num: 20

Candidate Starts for Leo04_195:

(Start: 20 @102072 has 76 MA's), (25, 102102), (28, 102114), (31, 102138), (53, 102294), (62, 102342), (64, 102366), (66, 102387), (92, 102585), (101, 102633), (105, 102660), (111, 102690), (126, 102777), (134, 102828), (175, 103008), (183, 103041), (187, 103056), (195, 103077),

Gene: LeoJr_182 Start: 120261, Stop: 121460, Start Num: 11

Candidate Starts for LeoJr_182:

(11, 120261), (Start: 19 @120276 has 7 MA's), (27, 120318), (29, 120324), (32, 120351), (39, 120405), (58, 120534), (64, 120576), (71, 120633), (73, 120663), (74, 120666), (98, 120801), (100, 120819), (104, 120843), (147, 121074), (186, 121245), (193, 121269), (199, 121296), (212, 121365), (214, 121389), (216, 121398),

Gene: Liandry_192 Start: 100586, Stop: 101683, Start Num: 20

Candidate Starts for Liandry_192:

(Start: 20 @100586 has 76 MA's), (25, 100616), (28, 100628), (31, 100652), (53, 100808), (62, 100856), (64, 100880), (67, 100919), (82, 101027), (92, 101099), (101, 101147), (105, 101174), (111, 101204), (126, 101291), (134, 101342), (175, 101522), (183, 101555), (195, 101591), (206, 101642),

Gene: LilMartin_193 Start: 100034, Stop: 101134, Start Num: 20

Candidate Starts for LilMartin_193:

(Start: 20 @100034 has 76 MA's), (28, 100076), (31, 100100), (53, 100256), (62, 100304), (64, 100328), (66, 100349), (75, 100451), (82, 100475), (92, 100547), (101, 100595), (105, 100622), (111, 100652), (126, 100739), (134, 100790), (175, 100970), (183, 101003), (195, 101039),

Gene: Limpid_139 Start: 80952, Stop: 82079, Start Num: 3

Candidate Starts for Limpid_139:

(Start: 3 @80952 has 1 MA's), (4, 80970), (9, 80997), (Start: 18 @81030 has 18 MA's), (Start: 24 @81057 has 2 MA's), (44, 81198), (47, 81216), (62, 81300), (64, 81324), (68, 81348), (73, 81417), (92, 81522), (105, 81597), (106, 81600), (111, 81627), (114, 81645), (126, 81711), (129, 81720), (131, 81744), (132, 81753), (139, 81792), (165, 81903), (175, 81942), (205, 82056),

Gene: LuckySocke_61 Start: 19655, Stop: 20737, Start Num: 20

Candidate Starts for LuckySocke_61:

(Start: 20 @19655 has 76 MA's), (Start: 24 @19679 has 2 MA's), (28, 19697), (30, 19715), (38, 19778), (41, 19802), (43, 19808), (63, 19952), (77, 20069), (91, 20141), (102, 20219), (119, 20315), (139, 20423), (141, 20435), (151, 20498), (157, 20513), (160, 20522), (163, 20540), (172, 20576), (203, 20705),

Gene: LukeCage_207 Start: 102797, Stop: 103873, Start Num: 20

Candidate Starts for LukeCage_207:

(Start: 20 @102797 has 76 MA's), (25, 102827), (28, 102839), (44, 102962), (49, 102986), (52, 103004), (53, 103019), (64, 103091), (69, 103121), (71, 103148), (92, 103280), (110, 103376), (114, 103403), (126, 103472), (132, 103514), (134, 103523), (183, 103736), (195, 103772),

Gene: Lululemon_192 Start: 100442, Stop: 101542, Start Num: 20

Candidate Starts for Lululemon_192:

(Start: 20 @100442 has 76 MA's), (25, 100472), (28, 100484), (31, 100508), (53, 100664), (62, 100712), (64, 100736), (66, 100757), (92, 100955), (101, 101003), (105, 101030), (111, 101060), (126, 101147), (134, 101198), (167, 101345), (175, 101378), (183, 101411), (187, 101426), (195, 101447),

Gene: Marsus_204 Start: 101332, Stop: 102450, Start Num: 20

Candidate Starts for Marsus_204:

(Start: 20 @101332 has 76 MA's), (25, 101362), (28, 101374), (31, 101398), (53, 101554), (62, 101602), (64, 101626), (66, 101647), (82, 101773), (92, 101845), (101, 101893), (105, 101920), (111, 101950), (126, 102037), (134, 102088), (167, 102235), (175, 102268), (195, 102355), (206, 102406),

Gene: MeganTheeKilla_147 Start: 81828, Stop: 82895, Start Num: 18

Candidate Starts for MeganTheeKilla_147:

(Start: 18 @81828 has 18 MA's), (Start: 24 @81855 has 2 MA's), (30, 81891), (44, 81996), (47, 82014), (62, 82098), (68, 82146), (85, 82260), (89, 82281), (91, 82305), (92, 82320), (105, 82395), (126, 82509), (129, 82518), (131, 82542), (139, 82590), (169, 82713), (175, 82740), (179, 82758), (188, 82806), (198, 82836), (205, 82872),

Gene: Mildred21_203 Start: 99529, Stop: 100629, Start Num: 20

Candidate Starts for Mildred21_203:

(Start: 20 @99529 has 76 MA's), (25, 99559), (28, 99571), (31, 99595), (53, 99751), (62, 99799), (64, 99823), (66, 99844), (70, 99889), (82, 99970), (92, 100042), (96, 100060), (101, 100090), (105, 100117), (110, 100138), (111, 100147), (126, 100234), (132, 100276), (134, 100285), (175, 100465), (183, 100498), (195, 100534),

Gene: Mimi_180 Start: 119143, Stop: 120348, Start Num: 6

Candidate Starts for Mimi_180:

(Start: 6 @119143 has 2 MA's), (Start: 17 @119188 has 1 MA's), (23, 119209), (28, 119233), (29, 119236), (39, 119317), (59, 119446), (89, 119647), (98, 119713), (103, 119755), (104, 119758), (108, 119776), (109, 119779), (122, 119857), (125, 119860), (133, 119914), (139, 119950), (167, 120040), (182, 120121), (186, 120133), (214, 120277), (217, 120301),

Gene: MindFlayer_197 Start: 100500, Stop: 101576, Start Num: 20

Candidate Starts for MindFlayer_197:

(Start: 20 @100500 has 76 MA's), (28, 100542), (52, 100707), (62, 100770), (64, 100794), (71, 100851), (92, 100983), (95, 100998), (110, 101079), (114, 101106), (121, 101157), (126, 101175), (132, 101217), (134, 101226), (175, 101406), (183, 101439), (195, 101475), (211, 101553),

Gene: Moab_145 Start: 83996, Stop: 85063, Start Num: 18

Candidate Starts for Moab_145:

(Start: 18 @83996 has 18 MA's), (26, 84032), (30, 84059), (36, 84113), (62, 84266), (64, 84290), (68, 84314), (78, 84410), (92, 84488), (96, 84506), (98, 84515), (105, 84563), (126, 84677), (130, 84704), (131, 84710), (135, 84731), (139, 84758), (140, 84761), (169, 84881), (175, 84908), (179, 84926), (188, 84974), (194, 84989), (205, 85040),

Gene: Mugiwara_213 Start: 103238, Stop: 104314, Start Num: 20

Candidate Starts for Mugiwara_213:

(Start: 20 @103238 has 76 MA's), (28, 103280), (52, 103445), (53, 103460), (64, 103532), (69, 103562), (71, 103589), (92, 103721), (96, 103739), (110, 103817), (114, 103844), (126, 103913), (132, 103955), (134, 103964), (167, 104111), (175, 104144), (183, 104177), (195, 104213),

Gene: MulchMansion_196 Start: 101416, Stop: 102516, Start Num: 20

Candidate Starts for MulchMansion_196:

(Start: 20 @101416 has 76 MA's), (28, 101458), (31, 101482), (53, 101638), (62, 101686), (64, 101710), (66, 101731), (75, 101833), (82, 101857), (92, 101929), (101, 101977), (105, 102004), (111, 102034), (126, 102121), (134, 102172), (175, 102352), (183, 102385), (195, 102421),

Gene: Muntaha_180 Start: 92917, Stop: 93972, Start Num: 19

Candidate Starts for Muntaha_180:

(Start: 19 @92917 has 7 MA's), (31, 92986), (40, 93052), (55, 93160), (62, 93187), (68, 93235), (78, 93331), (92, 93409), (106, 93487), (126, 93598), (128, 93601), (129, 93607), (183, 93862), (195, 93895), (204, 93931), (208, 93958),

Gene: Navo_187 Start: 99121, Stop: 100218, Start Num: 20

Candidate Starts for Navo_187:

(Start: 20 @99121 has 76 MA's), (25, 99151), (28, 99163), (31, 99187), (53, 99343), (62, 99391), (64, 99415), (67, 99454), (82, 99562), (91, 99619), (92, 99634), (101, 99682), (105, 99709), (111, 99739), (126, 99826), (134, 99877), (175, 100057), (183, 100090), (195, 100126), (206, 100177),

Gene: NiceHouse_194 Start: 106768, Stop: 107823, Start Num: 20

Candidate Starts for NiceHouse_194:

(Start: 20 @106768 has 76 MA's), (42, 106924), (43, 106927), (63, 107053), (64, 107065), (65, 107074), (83, 107200), (91, 107260), (99, 107305), (110, 107365), (130, 107488), (131, 107494), (146, 107578), (170, 107665), (196, 107758), (202, 107782),

Gene: NootNoot_189 Start: 99375, Stop: 100472, Start Num: 20

Candidate Starts for NootNoot_189:

(Start: 20 @99375 has 76 MA's), (25, 99405), (28, 99417), (31, 99441), (53, 99597), (62, 99645), (64, 99669), (67, 99708), (82, 99816), (92, 99888), (101, 99936), (105, 99963), (111, 99993), (126, 100080), (134, 100131), (175, 100311), (183, 100344), (195, 100380), (206, 100431),

Gene: Nova53_191 Start: 100469, Stop: 101512, Start Num: 20

Candidate Starts for Nova53_191:

(Start: 20 @100469 has 76 MA's), (Start: 24 @100493 has 2 MA's), (51, 100679), (62, 100733), (63, 100745), (69, 100787), (72, 100823), (83, 100892), (90, 100949), (114, 101072), (119, 101120), (126, 101144), (135, 101198), (136, 101213), (144, 101258), (155, 101300), (168, 101348), (170, 101354), (171, 101360), (173, 101369), (183, 101405), (195, 101444), (197, 101453), (201, 101471),

Gene: PacManQ_192 Start: 100442, Stop: 101542, Start Num: 20

Candidate Starts for PacManQ_192:

(Start: 20 @100442 has 76 MA's), (25, 100472), (28, 100484), (31, 100508), (53, 100664), (62, 100712), (64, 100736), (66, 100757), (92, 100955), (101, 101003), (105, 101030), (111, 101060), (126,

101147), (134, 101198), (167, 101345), (175, 101378), (183, 101411), (187, 101426), (195, 101447),

Gene: Panchaali_182 Start: 117390, Stop: 118610, Start Num: 16

Candidate Starts for Panchaali_182:

(5, 117345), (16, 117390), (29, 117441), (44, 117561), (71, 117750), (74, 117783), (81, 117816), (83, 117825), (93, 117909), (97, 117924), (104, 117969), (117, 118041), (124, 118086), (139, 118179), (186, 118389), (193, 118413), (194, 118416), (199, 118440), (205, 118467), (214, 118539),

Gene: Paradiddles_186 Start: 102044, Stop: 103141, Start Num: 20

Candidate Starts for Paradiddles_186:

(Start: 20 @102044 has 76 MA's), (25, 102074), (28, 102086), (31, 102110), (53, 102266), (62, 102314), (64, 102338), (67, 102377), (82, 102485), (92, 102557), (101, 102605), (105, 102632), (111, 102662), (126, 102749), (134, 102800), (159, 102914), (167, 102947), (175, 102980), (183, 103013), (195, 103049), (206, 103100),

Gene: Patbob_179 Start: 119705, Stop: 120910, Start Num: 6

Candidate Starts for Patbob_179:

(Start: 6 @119705 has 2 MA's), (Start: 17 @119750 has 1 MA's), (23, 119771), (28, 119795), (29, 119798), (48, 119942), (59, 120008), (89, 120209), (98, 120275), (103, 120317), (104, 120320), (108, 120338), (122, 120419), (125, 120422), (133, 120476), (139, 120512), (167, 120602), (182, 120683), (186, 120695), (197, 120734), (217, 120863),

Gene: Patelgo_147 Start: 84688, Stop: 85755, Start Num: 18

Candidate Starts for Patelgo_147:

(Start: 18 @84688 has 18 MA's), (26, 84724), (30, 84751), (36, 84805), (62, 84958), (64, 84982), (68, 85006), (78, 85102), (92, 85180), (96, 85198), (98, 85207), (105, 85255), (126, 85369), (130, 85396), (131, 85402), (139, 85450), (140, 85453), (169, 85573), (175, 85600), (179, 85618), (188, 85666), (194, 85681), (205, 85732),

Gene: Peebs_191 Start: 101354, Stop: 102454, Start Num: 20

Candidate Starts for Peebs_191:

(Start: 20 @101354 has 76 MA's), (25, 101384), (28, 101396), (31, 101420), (53, 101576), (62, 101624), (64, 101648), (66, 101669), (92, 101867), (101, 101915), (105, 101942), (111, 101972), (126, 102059), (134, 102110), (167, 102257), (175, 102290), (183, 102323), (187, 102338), (195, 102359),

Gene: Pepperwood_193 Start: 101312, Stop: 102412, Start Num: 20

Candidate Starts for Pepperwood_193:

(Start: 20 @101312 has 76 MA's), (25, 101342), (28, 101354), (31, 101378), (53, 101534), (62, 101582), (64, 101606), (66, 101627), (92, 101825), (101, 101873), (105, 101900), (111, 101930), (126, 102017), (134, 102068), (167, 102215), (175, 102248), (183, 102281), (187, 102296), (195, 102317),

Gene: Persimmon_194 Start: 99493, Stop: 100590, Start Num: 20

Candidate Starts for Persimmon_194:

(Start: 20 @99493 has 76 MA's), (25, 99523), (28, 99535), (31, 99559), (53, 99715), (62, 99763), (64, 99787), (67, 99826), (82, 99934), (92, 100006), (101, 100054), (105, 100081), (111, 100111), (126, 100198), (134, 100249), (175, 100429), (183, 100462), (195, 100498), (206, 100549),

Gene: Phrampa_173 Start: 121305, Stop: 122468, Start Num: 17

Candidate Starts for Phrampa_173:

(1, 121164), (2, 121191), (Start: 6 @121260 has 2 MA's), (Start: 17 @121305 has 1 MA's), (23, 121326), (28, 121350), (29, 121353), (39, 121434), (75, 121701), (103, 121878), (122, 121977), (139, 122070), (182, 122241), (186, 122253), (189, 122265), (195, 122283), (217, 122421),

Gene: Phredrick_150 Start: 81971, Stop: 83038, Start Num: 18

Candidate Starts for Phredrick_150:

(Start: 18 @81971 has 18 MA's), (Start: 24 @81998 has 2 MA's), (30, 82034), (47, 82157), (68, 82289), (89, 82424), (91, 82448), (92, 82463), (105, 82538), (116, 82604), (126, 82652), (129, 82661), (131, 82685), (132, 82694), (139, 82733), (169, 82856), (173, 82874), (175, 82883), (179, 82901), (188, 82949), (198, 82979), (205, 83015),

Gene: PinkiePie_192 Start: 100586, Stop: 101683, Start Num: 20

Candidate Starts for PinkiePie_192:

(Start: 20 @100586 has 76 MA's), (25, 100616), (28, 100628), (31, 100652), (53, 100808), (62, 100856), (64, 100880), (67, 100919), (82, 101027), (92, 101099), (101, 101147), (105, 101174), (111, 101204), (126, 101291), (134, 101342), (175, 101522), (183, 101555), (195, 101591), (206, 101642),

Gene: PumpkinSpice_206 Start: 101721, Stop: 102797, Start Num: 20

Candidate Starts for PumpkinSpice_206:

(Start: 20 @101721 has 76 MA's), (28, 101763), (52, 101928), (62, 101991), (64, 102015), (71, 102072), (92, 102204), (95, 102219), (110, 102300), (114, 102327), (121, 102378), (126, 102396), (132, 102438), (134, 102447), (175, 102627), (183, 102660), (195, 102696), (211, 102774),

Gene: Quaran19_204 Start: 101162, Stop: 102238, Start Num: 20

Candidate Starts for Quaran19_204:

(Start: 20 @101162 has 76 MA's), (28, 101204), (52, 101369), (62, 101432), (64, 101456), (71, 101513), (92, 101645), (95, 101660), (110, 101741), (114, 101768), (121, 101819), (126, 101837), (132, 101879), (134, 101888), (175, 102068), (183, 102101), (195, 102137), (211, 102215),

Gene: Racecar_181 Start: 120109, Stop: 121314, Start Num: 6

Candidate Starts for Racecar_181:

(Start: 6 @120109 has 2 MA's), (Start: 17 @120154 has 1 MA's), (23, 120175), (28, 120199), (29, 120202), (39, 120283), (59, 120412), (89, 120613), (98, 120679), (103, 120721), (104, 120724), (108, 120742), (109, 120745), (122, 120823), (125, 120826), (133, 120880), (139, 120916), (182, 121087), (186, 121099), (214, 121243), (217, 121267),

Gene: Raqqa_71 Start: 37865, Stop: 38926, Start Num: 20

Candidate Starts for Raqqa_71:

(Start: 20 @37865 has 76 MA's), (74, 38252), (86, 38297), (88, 38303), (102, 38417), (119, 38510), (126, 38534), (128, 38540), (190, 38822),

Gene: ReginaGlobina_186 Start: 121549, Stop: 122733, Start Num: 19

Candidate Starts for ReginaGlobina_186:

(11, 121534), (Start: 19 @121549 has 7 MA's), (27, 121591), (29, 121597), (32, 121624), (39, 121678), (58, 121807), (64, 121849), (71, 121906), (73, 121936), (74, 121939), (98, 122074), (100, 122092), (104, 122116), (147, 122347), (186, 122518), (193, 122542), (199, 122569), (212, 122638), (214, 122662), (216, 122671),

Gene: Rikishi_211 Start: 101443, Stop: 102519, Start Num: 20

Candidate Starts for Rikishi_211:

(Start: 20 @101443 has 76 MA's), (28, 101485), (52, 101650), (62, 101713), (64, 101737), (71, 101794), (92, 101926), (95, 101941), (110, 102022), (114, 102049), (121, 102100), (126, 102118), (132, 102160), (134, 102169), (175, 102349), (183, 102382), (195, 102418), (211, 102496),

Gene: Riptide_196 Start: 99761, Stop: 100873, Start Num: 20

Candidate Starts for Riptide_196:

(Start: 20 @99761 has 76 MA's), (25, 99791), (28, 99803), (45, 99932), (49, 99950), (56, 100007), (62, 100031), (64, 100055), (82, 100211), (90, 100265), (92, 100283), (101, 100331), (105, 100358), (111, 100391), (126, 100478), (134, 100529), (163, 100664), (183, 100742), (195, 100778), (196, 100784), (206, 100829),

Gene: Rockabye_182 Start: 111294, Stop: 112493, Start Num: 16

Candidate Starts for Rockabye_182:

(16, 111294), (28, 111342), (33, 111384), (73, 111684), (118, 111960), (123, 111987), (186, 112275), (189, 112287), (212, 112395), (215, 112425),

Gene: SJReid_183 Start: 109525, Stop: 110733, Start Num: 16

Candidate Starts for SJReid_183:

(16, 109525), (50, 109726), (107, 110113), (186, 110515), (193, 110539), (194, 110542), (215, 110665),

Gene: SaltySpittoon_203 Start: 100704, Stop: 101780, Start Num: 20

Candidate Starts for SaltySpittoon_203:

(Start: 20 @100704 has 76 MA's), (28, 100746), (52, 100911), (62, 100974), (64, 100998), (71, 101055), (92, 101187), (95, 101202), (110, 101283), (114, 101310), (121, 101361), (126, 101379), (132, 101421), (134, 101430), (175, 101610), (183, 101643), (195, 101679), (211, 101757),

Gene: Samisti12_197 Start: 102936, Stop: 104036, Start Num: 20

Candidate Starts for Samisti12_197:

(Start: 20 @102936 has 76 MA's), (25, 102966), (28, 102978), (31, 103002), (53, 103158), (64, 103230), (66, 103251), (92, 103449), (101, 103497), (105, 103524), (110, 103545), (111, 103554), (126, 103641), (134, 103692), (167, 103839), (175, 103872), (183, 103905), (187, 103920), (195, 103941),

Gene: Scheme_198 Start: 102949, Stop: 104049, Start Num: 20

Candidate Starts for Scheme_198:

(Start: 20 @102949 has 76 MA's), (25, 102979), (28, 102991), (31, 103015), (53, 103171), (62, 103219), (64, 103243), (66, 103264), (92, 103462), (101, 103510), (105, 103537), (111, 103567), (126, 103654), (134, 103705), (167, 103852), (175, 103885), (183, 103918), (187, 103933), (195, 103954),

Gene: Seahorse_81 Start: 42742, Stop: 43809, Start Num: 20

Candidate Starts for Seahorse_81:

(Start: 20 @42742 has 76 MA's), (62, 43015), (70, 43078), (73, 43129), (126, 43414), (128, 43420), (130, 43444), (175, 43648),

Gene: SeresaTree_141 Start: 81643, Stop: 82692, Start Num: 18

Candidate Starts for SeresaTree_141:

(10, 81616), (Start: 18 @81643 has 18 MA's), (26, 81679), (47, 81829), (64, 81937), (68, 81961), (85, 82075), (89, 82096), (92, 82135), (105, 82210), (126, 82324), (129, 82333), (130, 82351), (132, 82366), (139, 82405), (155, 82477), (165, 82516), (173, 82546), (175, 82555), (194, 82618), (195, 82621), (205, 82669),

Gene: Sham_141 Start: 83442, Stop: 84491, Start Num: 18

Candidate Starts for Sham_141:

(14, 83436), (Start: 18 @83442 has 18 MA's), (26, 83478), (41, 83589), (44, 83610), (47, 83628), (64, 83736), (68, 83760), (76, 83847), (89, 83895), (92, 83934), (105, 84009), (114, 84057), (126, 84123), (129, 84132), (132, 84165), (136, 84192), (139, 84204), (155, 84276), (165, 84315), (174, 84351), (175, 84354), (195, 84420), (198, 84432), (205, 84468),

Gene: Shuckle_195 Start: 101411, Stop: 102511, Start Num: 20

Candidate Starts for Shuckle_195:

(Start: 20 @101411 has 76 MA's), (25, 101441), (28, 101453), (31, 101477), (53, 101633), (62, 101681), (64, 101705), (66, 101726), (82, 101852), (92, 101924), (101, 101972), (105, 101999), (111, 102029), (126, 102116), (134, 102167), (175, 102347), (183, 102380), (187, 102395), (195, 102416),

Gene: Sollertia_202 Start: 101297, Stop: 102373, Start Num: 20

Candidate Starts for Sollertia_202:

(Start: 20 @101297 has 76 MA's), (28, 101339), (31, 101363), (52, 101504), (64, 101591), (65, 101600), (71, 101648), (96, 101798), (110, 101876), (114, 101903), (126, 101972), (132, 102014), (134, 102023), (175, 102203), (183, 102236), (195, 102272),

Gene: SparkleGoddess_146 Start: 83171, Stop: 84211, Start Num: 24

Candidate Starts for SparkleGoddess_146:

(12, 83132), (15, 83138), (Start: 19 @83144 has 7 MA's), (Start: 24 @83171 has 2 MA's), (44, 83312), (50, 83339), (64, 83438), (68, 83462), (87, 83585), (89, 83597), (91, 83621), (105, 83711), (116, 83777), (126, 83825), (129, 83834), (131, 83858), (136, 83894), (139, 83906), (140, 83909), (155, 83978), (159, 83990), (169, 84029), (175, 84056), (181, 84098), (188, 84122), (198, 84152), (205, 84188),

Gene: Spelly_207 Start: 100633, Stop: 101709, Start Num: 20

Candidate Starts for Spelly_207:

(Start: 20 @100633 has 76 MA's), (28, 100675), (52, 100840), (62, 100903), (64, 100927), (71, 100984), (92, 101116), (95, 101131), (110, 101212), (114, 101239), (121, 101290), (126, 101308), (132, 101350), (134, 101359), (175, 101539), (183, 101572), (195, 101608), (211, 101686),

Gene: Spilled_210 Start: 101837, Stop: 102913, Start Num: 20

Candidate Starts for Spilled_210:

(Start: 20 @101837 has 76 MA's), (28, 101879), (52, 102044), (62, 102107), (64, 102131), (71, 102188), (92, 102320), (95, 102335), (110, 102416), (114, 102443), (121, 102494), (126, 102512), (132, 102554), (134, 102563), (175, 102743), (183, 102776), (195, 102812), (211, 102890),

Gene: Squillium_195 Start: 100588, Stop: 101685, Start Num: 20

Candidate Starts for Squillium_195:

(Start: 20 @100588 has 76 MA's), (25, 100618), (28, 100630), (31, 100654), (53, 100810), (62, 100858), (64, 100882), (67, 100921), (82, 101029), (92, 101101), (101, 101149), (105, 101176), (111, 101206), (126, 101293), (134, 101344), (175, 101524), (183, 101557), (195, 101593), (206, 101644),

Gene: Stanimal_201 Start: 101658, Stop: 102734, Start Num: 20

Candidate Starts for Stanimal_201:

(Start: 20 @101658 has 76 MA's), (28, 101700), (31, 101724), (52, 101865), (64, 101952), (65, 101961), (71, 102009), (96, 102159), (110, 102237), (114, 102264), (126, 102333), (132, 102375), (134, 102384), (175, 102564), (183, 102597), (195, 102633),

Gene: StarPlatinum_211 Start: 103306, Stop: 104382, Start Num: 20

Candidate Starts for StarPlatinum_211:

(Start: 20 @103306 has 76 MA's), (28, 103348), (44, 103471), (49, 103495), (52, 103513), (53, 103528), (64, 103600), (71, 103657), (73, 103687), (92, 103789), (110, 103885), (114, 103912), (126, 103981), (132, 104023), (134, 104032), (175, 104212), (183, 104245), (195, 104281),

Gene: Starbow_201 Start: 100677, Stop: 101753, Start Num: 20

Candidate Starts for Starbow_201:

(Start: 20 @100677 has 76 MA's), (28, 100719), (52, 100884), (62, 100947), (64, 100971), (71, 101028), (92, 101160), (95, 101175), (110, 101256), (114, 101283), (121, 101334), (126, 101352), (132, 101394), (134, 101403), (175, 101583), (183, 101616), (195, 101652), (211, 101730),

Gene: Stigma_145 Start: 83542, Stop: 84609, Start Num: 19

Candidate Starts for Stigma_145:

(12, 83530), (15, 83536), (Start: 19 @83542 has 7 MA's), (Start: 24 @83569 has 2 MA's), (41, 83689), (44, 83710), (50, 83737), (64, 83836), (68, 83860), (87, 83983), (89, 83995), (91, 84019), (105, 84109), (116, 84175), (126, 84223), (129, 84232), (131, 84256), (136, 84292), (139, 84304), (140, 84307), (155, 84376), (169, 84427), (175, 84454), (181, 84496), (188, 84520), (198, 84550), (205, 84586),

Gene: Sushi23_194 Start: 102418, Stop: 103518, Start Num: 20

Candidate Starts for Sushi23_194:

(Start: 20 @102418 has 76 MA's), (25, 102448), (28, 102460), (31, 102484), (53, 102640), (62, 102688), (64, 102712), (66, 102733), (92, 102931), (101, 102979), (105, 103006), (111, 103036), (126, 103123), (134, 103174), (167, 103321), (175, 103354), (183, 103387), (187, 103402), (195, 103423),

Gene: Talia1610_181 Start: 119565, Stop: 120725, Start Num: 17

Candidate Starts for Talia1610_181:

(Start: 6 @119520 has 2 MA's), (Start: 17 @119565 has 1 MA's), (23, 119586), (28, 119610), (29, 119613), (39, 119694), (59, 119823), (89, 120024), (98, 120090), (103, 120132), (104, 120135), (108, 120153), (109, 120156), (122, 120234), (125, 120237), (133, 120291), (139, 120327), (167, 120417), (182, 120498), (186, 120510), (214, 120654), (217, 120678),

Gene: Talos_60 Start: 19515, Stop: 20597, Start Num: 20

Candidate Starts for Talos_60:

(Start: 20 @19515 has 76 MA's), (Start: 24 @19539 has 2 MA's), (28, 19557), (38, 19638), (47, 19704), (50, 19713), (61, 19794), (70, 19863), (77, 19929), (91, 20001), (102, 20079), (119, 20175), (126, 20199), (160, 20382), (172, 20436), (182, 20490), (203, 20565),

Gene: Targaryen_193 Start: 102433, Stop: 103533, Start Num: 20

Candidate Starts for Targaryen_193:

(Start: 20 @102433 has 76 MA's), (28, 102475), (31, 102499), (53, 102655), (62, 102703), (64, 102727), (66, 102748), (92, 102946), (101, 102994), (105, 103021), (111, 103051), (126, 103138), (134, 103189), (175, 103369), (183, 103402), (195, 103438),

Gene: Teutsch_192 Start: 101866, Stop: 102966, Start Num: 20

Candidate Starts for Teutsch_192:

(Start: 20 @101866 has 76 MA's), (25, 101896), (28, 101908), (31, 101932), (53, 102088), (62, 102136), (64, 102160), (66, 102181), (92, 102379), (101, 102427), (105, 102454), (111, 102484), (126, 102571), (134, 102622), (167, 102769), (175, 102802), (183, 102835), (187, 102850), (195, 102871),

Gene: TomSawyer_208 Start: 103148, Stop: 104224, Start Num: 20

Candidate Starts for TomSawyer_208:

(Start: 20 @103148 has 76 MA's), (28, 103190), (52, 103355), (62, 103418), (64, 103442), (71, 103499), (92, 103631), (95, 103646), (110, 103727), (114, 103754), (121, 103805), (126, 103823), (132, 103865), (134, 103874), (175, 104054), (183, 104087), (195, 104123), (211, 104201),

Gene: Tomas_200 Start: 101553, Stop: 102650, Start Num: 20

Candidate Starts for Tomas_200:

(Start: 20 @101553 has 76 MA's), (25, 101583), (28, 101595), (31, 101619), (40, 101685), (53, 101775), (62, 101823), (64, 101847), (67, 101886), (92, 102066), (105, 102141), (110, 102162), (126, 102258), (132, 102300), (134, 102309), (146, 102378), (195, 102558), (197, 102567),

Gene: Tribute_191 Start: 101883, Stop: 102983, Start Num: 20

Candidate Starts for Tribute_191:

(Start: 20 @101883 has 76 MA's), (25, 101913), (28, 101925), (31, 101949), (53, 102105), (62, 102153), (64, 102177), (66, 102198), (92, 102396), (101, 102444), (105, 102471), (111, 102501), (126, 102588), (134, 102639), (167, 102786), (175, 102819), (183, 102852), (187, 102867), (195, 102888),

Gene: TunaTartare_146 Start: 84702, Stop: 85751, Start Num: 18

Candidate Starts for TunaTartare_146:

(8, 84663), (Start: 18 @84702 has 18 MA's), (26, 84738), (41, 84849), (44, 84870), (47, 84888), (64, 84996), (68, 85020), (80, 85119), (89, 85155), (92, 85194), (105, 85269), (111, 85299), (126, 85383), (129, 85392), (132, 85425), (136, 85452), (139, 85464), (155, 85536), (165, 85575), (174, 85611), (175, 85614), (195, 85680), (198, 85692), (205, 85728),

Gene: WaddleDee_176 Start: 115681, Stop: 116895, Start Num: 16

Candidate Starts for WaddleDee_176:

(16, 115681), (28, 115726), (29, 115729), (92, 116179), (94, 116191), (98, 116206), (112, 116287), (154, 116530), (186, 116674), (199, 116725), (214, 116824), (216, 116833),

Gene: Wakanda_178 Start: 92597, Stop: 93652, Start Num: 19

Candidate Starts for Wakanda_178:

(Start: 19 @92597 has 7 MA's), (31, 92666), (40, 92732), (55, 92840), (62, 92867), (68, 92915), (78, 93011), (92, 93089), (106, 93167), (126, 93278), (128, 93281), (129, 93287), (183, 93542), (204, 93611), (208, 93638),

Gene: Warpy_197 Start: 101345, Stop: 102445, Start Num: 20

Candidate Starts for Warpy_197:

(Start: 20 @101345 has 76 MA's), (28, 101387), (31, 101411), (53, 101567), (62, 101615), (64, 101639), (66, 101660), (82, 101786), (92, 101858), (96, 101876), (105, 101933), (111, 101963), (126, 102050), (134, 102101), (142, 102149), (159, 102215), (175, 102281), (183, 102314), (195, 102350),

Gene: Watermoore_193 Start: 102704, Stop: 103804, Start Num: 20

Candidate Starts for Watermoore_193:

(Start: 20 @102704 has 76 MA's), (25, 102734), (28, 102746), (31, 102770), (53, 102926), (62, 102974), (64, 102998), (66, 103019), (92, 103217), (101, 103265), (105, 103292), (111, 103322), (126, 103409), (134, 103460), (167, 103607), (175, 103640), (183, 103673), (187, 103688), (195, 103709),

Gene: Westy_148 Start: 83857, Stop: 84924, Start Num: 18

Candidate Starts for Westy_148:

(Start: 18 @83857 has 18 MA's), (Start: 24 @83884 has 2 MA's), (26, 83893), (30, 83920), (41, 84004), (44, 84025), (50, 84052), (64, 84151), (68, 84175), (87, 84298), (89, 84310), (91, 84334), (105, 84424), (116, 84490), (126, 84538), (129, 84547), (131, 84571), (136, 84607), (139, 84619), (140, 84622), (155, 84691), (169, 84742), (175, 84769), (181, 84811), (188, 84835), (198, 84865), (205, 84901),

Gene: WhereRU_193 Start: 100245, Stop: 101345, Start Num: 20

Candidate Starts for WhereRU_193:

(Start: 20 @100245 has 76 MA's), (25, 100275), (28, 100287), (31, 100311), (53, 100467), (62, 100515), (64, 100539), (67, 100578), (82, 100686), (91, 100743), (92, 100758), (101, 100806), (105, 100833), (111, 100863), (126, 100950), (134, 101001), (175, 101181), (183, 101214), (195, 101250), (206, 101301),

Gene: Wipeout_195 Start: 102100, Stop: 103176, Start Num: 20

Candidate Starts for Wipeout_195:

(Start: 20 @102100 has 76 MA's), (28, 102142), (52, 102307), (62, 102370), (64, 102394), (71, 102451), (92, 102583), (95, 102598), (110, 102679), (114, 102706), (121, 102757), (126, 102775), (132, 102817), (134, 102826), (175, 103006), (183, 103039), (195, 103075), (211, 103153),

Gene: Wofford_202 Start: 104154, Stop: 105221, Start Num: 20

Candidate Starts for Wofford_202:

(Start: 20 @104154 has 76 MA's), (28, 104196), (31, 104220), (52, 104361), (62, 104424), (64, 104448), (69, 104478), (71, 104505), (92, 104637), (110, 104733), (114, 104760), (126, 104829), (131, 104862), (132, 104871), (134, 104880), (159, 104994), (167, 105027), (172, 105048), (183, 105093), (187, 105108), (195, 105129), (206, 105180),

Gene: Yaboi_206 Start: 101232, Stop: 102308, Start Num: 20

Candidate Starts for Yaboi_206:

(Start: 20 @101232 has 76 MA's), (28, 101274), (31, 101298), (52, 101439), (64, 101526), (65, 101535), (71, 101583), (96, 101733), (110, 101811), (114, 101838), (126, 101907), (132, 101949), (134, 101958), (175, 102138), (183, 102171), (195, 102207),

Gene: Yappy_98 Start: 50561, Stop: 49479, Start Num: 19

Candidate Starts for Yappy_98:

(7, 50612), (Start: 19 @50561 has 7 MA's), (21, 50555), (26, 50525), (30, 50498), (37, 50438), (46, 50378), (62, 50282), (64, 50258), (73, 50168), (83, 50120), (91, 50060), (96, 50027), (114, 49961), (115, 49952), (119, 49913), (128, 49886), (133, 49844), (156, 49733), (164, 49697), (166, 49688), (180, 49613), (195, 49562), (203, 49529), (207, 49508),