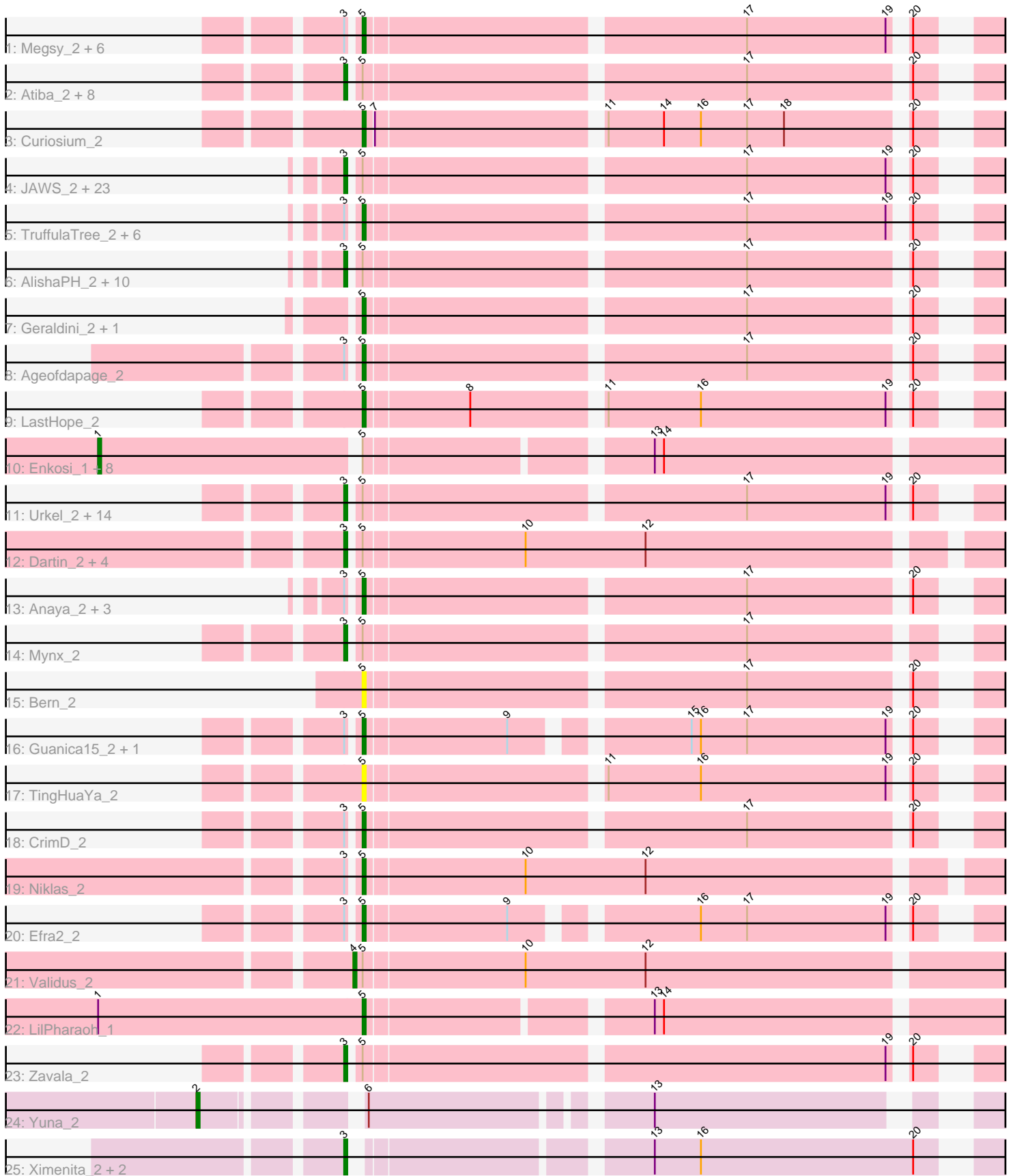


Pham 214129



Note: Tracks are now grouped by subcluster and scaled. Switching in subcluster is indicated by changes in track color. Track scale is now set by default to display the region 30 bp upstream of start 1 to 30 bp downstream of the last possible start. If this default region is judged to be packed too tightly with annotated starts, the track will be further scaled to only show that region of the ORF with annotated starts. This action will be indicated by adding "Zoomed" to the title. For starts, yellow indicates the location of called starts comprised solely of Glimmer/GeneMark auto-annotations, green indicates the location of called starts with at least 1 manual gene annotation.

Pham 214129 Report

This analysis was run 02/22/25 on database version 588.

Pham number 214129 has 111 members, 11 are drafts.

Phages represented in each track:

- Track 1 : Megsy_2, TiniBug_2, Devera_2, Pokerus_2, CheetoDust_2, Illumine_2, TaiwanKao_2
- Track 2 : Atiba_2, Murucutumbu_2, Ganymede_2, Tiri_2, LaterM_2, Stinson_2, QuincyRose_2, Adonis_2, Tachez_2
- Track 3 : Curiosium_2
- Track 4 : JAWS_2, Capricorn_2, Durfee_2, ShiaSurprise_2, Homura_2, Apocalypse_2, Twitch_2, Blizzard_2, Veliki_2, Piatt_2, Dalmuri_2, Inky_2, BarrelRoll_2, Llorens_2, Jarvi_2, Asayake_2, Hyperbowlee_2, BEEST_2, Jeckyll_2, Belladonna_2, Peel_2, CREW_2, Padfoot_2, Spock_2
- Track 5 : TruffulaTree_2, Boiiii_2, BGlluviae_2, Topper_2, Lunahalos_2, Rosmarinus_2, CaseJules_2
- Track 6 : AlishaPH_2, Rapunzel97_2, Angelica_2, Adephagia_2, Slimphazie_2, HedwigODU_2, Deby_2, Sulley_2, Padpat_2, ActinUp_2, Ramen_2
- Track 7 : Geraldini_2, Beezoo_2
- Track 8 : Ageofdapage_2
- Track 9 : LastHope_2
- Track 10 : Enkosi_1, Teejan_1, Torres_1, SgtBeansprout_1, Mdavu_1, Nutello_1, Amelie_1, Nikao_1, Binglebops_1
- Track 11 : Urkel_2, Joy99_2, DrHayes_2, Clipper_2, LindNT_2, CallaLilly_2, TreyKay_2, MacKat_2, Bella96_2, Dole_2, YoureAdopted_2, Prithvi_2, BaghaKamala_2, MeaningOfLife_2, SamuelLPlaqson_2
- Track 12 : Dartin_2, McMater_2, Shaobing_2, Peanam_2, Richo_2
- Track 13 : Anaya_2, Zabiza_2, Emerson_2, Jayhawk_2
- Track 14 : Mynx_2
- Track 15 : Bern_2
- Track 16 : Guanica15_2, Yunkel11_2
- Track 17 : TingHuaYa_2
- Track 18 : CrimD_2
- Track 19 : Niklas_2
- Track 20 : Efra2_2
- Track 21 : Validus_2
- Track 22 : LilPharaoh_1
- Track 23 : Zavala_2
- Track 24 : Yuna_2
- Track 25 : Ximenita_2, Krueger_2, Syra333_2

Summary of Final Annotations (See graph section above for start numbers):

The start number called the most often in the published annotations is 3, it was called in 63 of the 100 non-draft genes in the pham.

Genes that call this "Most Annotated" start:

- ActinUp_2, Adephagia_2, Adonis_2, AlishaPH_2, Angelica_2, Apocalypse_2, Asayake_2, Atiba_2, BEEST_2, BaghaKamala_2, BarrelRoll_2, Bella96_2, Belladonna_2, Blizzard_2, CREW_2, CallaLilly_2, Capricorn_2, Clipper_2, Dalmuri_2, Dartin_2, Deby_2, Dole_2, DrHayes_2, Durfee_2, Ganymede_2, HedwigODU_2, Homura_2, Hyperbowlee_2, Inky_2, JAWS_2, Jarvi_2, Jeckyll_2, Joy99_2, Krueger_2, LaterM_2, LindNT_2, Llorens_2, MacKat_2, McMater_2, MeaningOfLife_2, Murucutumbu_2, Mynx_2, Padfoot_2, Padpat_2, Peanam_2, Peel_2, Piatt_2, Prithvi_2, QuincyRose_2, Ramen_2, Rapunzel97_2, Richo_2, SamuelLPlagson_2, Shaobing_2, ShiaSurprise_2, Slimphazie_2, Spock_2, Stinson_2, Sulley_2, Syra333_2, Tachez_2, Tiri_2, TreyKay_2, Twitch_2, Urkel_2, Veliki_2, Ximenita_2, YoureAdopted_2, Zavala_2,

Genes that have the "Most Annotated" start but do not call it:

- Ageofdapage_2, Anaya_2, BGlluviae_2, Boiiii_2, CaseJules_2, CheetoDust_2, CrimD_2, Devera_2, Efra2_2, Emerson_2, Guanica15_2, Illumine_2, Jayhawk_2, Lunahalos_2, Megsy_2, Niklas_2, Pokerus_2, Rosmarinus_2, TaiwanKao_2, TiniBug_2, Topper_2, TruffulaTree_2, Yunkel11_2, Zabiza_2,

Genes that do not have the "Most Annotated" start:

- Amelie_1, Beezoo_2, Bern_2, Biglebops_1, Curiosium_2, Enkosi_1, Geraldini_2, LastHope_2, LilPharaoh_1, Mdavu_1, Nikao_1, Nutello_1, SgtBeansprout_1, Teejan_1, TingHuaYa_2, Torres_1, Validus_2, Yuna_2,

Summary by start number:

Start 1:

- Found in 10 of 111 (9.0%) of genes in pham
- Manual Annotations of this start: 7 of 100
- Called 90.0% of time when present
- Phage (with cluster) where this start called: Amelie_1 (K1), Biglebops_1 (K1), Enkosi_1 (K1), Mdavu_1 (K1), Nikao_1 (K1), Nutello_1 (K1), SgtBeansprout_1 (K1), Teejan_1 (K1), Torres_1 (K1),

Start 2:

- Found in 1 of 111 (0.9%) of genes in pham
- Manual Annotations of this start: 1 of 100
- Called 100.0% of time when present
- Phage (with cluster) where this start called: Yuna_2 (K6),

Start 3:

- Found in 93 of 111 (83.8%) of genes in pham
- Manual Annotations of this start: 63 of 100
- Called 74.2% of time when present
- Phage (with cluster) where this start called: ActinUp_2 (K1), Adephagia_2 (K1), Adonis_2 (K1), AlishaPH_2 (K1), Angelica_2 (K1), Apocalypse_2 (K1), Asayake_2 (K1), Atiba_2 (K1), BEEST_2 (K1), BaghaKamala_2 (K1), BarrelRoll_2 (K1),

Bella96_2 (K1), Belladonna_2 (K1), Blizzard_2 (K1), CREW_2 (K1), CallaLilly_2 (K1), Capricorn_2 (K1), Clipper_2 (K1), Dalmuri_2 (K1), Dartin_2 (K1), Deby_2 (K1), Dole_2 (K1), DrHayes_2 (K1), Durfee_2 (K1), Ganymede_2 (K1), HedwigODU_2 (K1), Homura_2 (K1), Hyperbowlee_2 (K1), Inky_2 (K1), JAWS_2 (K1), Jarvi_2 (K1), Jeckyll_2 (K1), Joy99_2 (K1), Krueger_2 (K6), LaterM_2 (K1), LindNT_2 (K1), Llorens_2 (K1), MacKat_2 (K1), McMater_2 (K1), MeaningOfLife_2 (K1), Murucutumbu_2 (K1), Mynx_2 (K1), Padfoot_2 (K1), Padpat_2 (K1), Peanam_2 (K1), Peel_2 (K1), Piatt_2 (K1), Prithvi_2 (K1), QuincyRose_2 (K1), Ramen_2 (K1), Rapunzel97_2 (K1), Richo_2 (K1), SamuelLPlaqson_2 (K1), Shaobing_2 (K1), ShiaSurprise_2 (K1), Slimphazie_2 (K1), Spock_2 (K1), Stinson_2 (K1), Sulley_2 (K1), Syra333_2 (K6), Tachez_2 (K1), Tiri_2 (K1), TreyKay_2 (K1), Twitch_2 (K1), Urkel_2 (K1), Veliki_2 (K1), Ximenita_2 (K6), YoureAdopted_2 (K1), Zavala_2 (K1),

Start 4:

- Found in 1 of 111 (0.9%) of genes in pham
- Manual Annotations of this start: 1 of 100
- Called 100.0% of time when present
- Phage (with cluster) where this start called: Validus_2 (K1),

Start 5:

- Found in 107 of 111 (96.4%) of genes in pham
- Manual Annotations of this start: 28 of 100
- Called 29.0% of time when present
- Phage (with cluster) where this start called: Ageofdapage_2 (K1), Anaya_2 (K1), BGIlluviae_2 (K1), Beezoo_2 (K1), Bern_2 (K1), Boiiii_2 (K1), CaseJules_2 (K1), CheetoDust_2 (K1), CrimD_2 (K1), Curiosium_2 (K1), Devera_2 (K1), Efra2_2 (K1), Emerson_2 (K1), Geraldini_2 (K1), Guanica15_2 (K1), Illumine_2 (K1), Jayhawk_2 (K1), LastHope_2 (K1), LilPharaoh_1 (K1), Lunahalos_2 (K1), Megsy_2 (K1), Niklas_2 (K1), Pokerus_2 (K1), Rosmarinus_2 (K1), TaiwanKao_2 (K1), TingHuaYa_2 (K1), TiniBug_2 (K1), Topper_2 (K1), TruffulaTree_2 (K1), Yunkel11_2 (K1), Zabiza_2 (K1),

Summary by clusters:

There are 2 clusters represented in this pham: K1, K6,

Info for manual annotations of cluster K1:

- Start number 1 was manually annotated 7 times for cluster K1.
- Start number 3 was manually annotated 60 times for cluster K1.
- Start number 4 was manually annotated 1 time for cluster K1.
- Start number 5 was manually annotated 28 times for cluster K1.

Info for manual annotations of cluster K6:

- Start number 2 was manually annotated 1 time for cluster K6.
- Start number 3 was manually annotated 3 times for cluster K6.

Gene Information:

Gene: ActinUp_2 Start: 294, Stop: 479, Start Num: 3

Candidate Starts for ActinUp_2:

(Start: 3 @294 has 63 MA's), (Start: 5 @297 has 28 MA's), (17, 414), (20, 462),

Gene: Adephagia_2 Start: 294, Stop: 479, Start Num: 3
Candidate Starts for Adephagia_2:
(Start: 3 @294 has 63 MA's), (Start: 5 @297 has 28 MA's), (17, 414), (20, 462),

Gene: Adonis_2 Start: 270, Stop: 455, Start Num: 3
Candidate Starts for Adonis_2:
(Start: 3 @270 has 63 MA's), (Start: 5 @273 has 28 MA's), (17, 390), (20, 438),

Gene: Ageofdapage_2 Start: 256, Stop: 438, Start Num: 5
Candidate Starts for Ageofdapage_2:
(Start: 3 @253 has 63 MA's), (Start: 5 @256 has 28 MA's), (17, 373), (20, 421),

Gene: AlishaPH_2 Start: 293, Stop: 478, Start Num: 3
Candidate Starts for AlishaPH_2:
(Start: 3 @293 has 63 MA's), (Start: 5 @296 has 28 MA's), (17, 413), (20, 461),

Gene: Amelie_1 Start: 75, Stop: 353, Start Num: 1
Candidate Starts for Amelie_1:
(Start: 1 @75 has 7 MA's), (Start: 5 @156 has 28 MA's), (13, 240), (14, 243),

Gene: Anaya_2 Start: 297, Stop: 479, Start Num: 5
Candidate Starts for Anaya_2:
(Start: 3 @294 has 63 MA's), (Start: 5 @297 has 28 MA's), (17, 414), (20, 462),

Gene: Angelica_2 Start: 294, Stop: 479, Start Num: 3
Candidate Starts for Angelica_2:
(Start: 3 @294 has 63 MA's), (Start: 5 @297 has 28 MA's), (17, 414), (20, 462),

Gene: Apocalypse_2 Start: 294, Stop: 479, Start Num: 3
Candidate Starts for Apocalypse_2:
(Start: 3 @294 has 63 MA's), (Start: 5 @297 has 28 MA's), (17, 414), (19, 459), (20, 462),

Gene: Asayake_2 Start: 294, Stop: 479, Start Num: 3
Candidate Starts for Asayake_2:
(Start: 3 @294 has 63 MA's), (Start: 5 @297 has 28 MA's), (17, 414), (19, 459), (20, 462),

Gene: Atiba_2 Start: 270, Stop: 455, Start Num: 3
Candidate Starts for Atiba_2:
(Start: 3 @270 has 63 MA's), (Start: 5 @273 has 28 MA's), (17, 390), (20, 438),

Gene: BEEST_2 Start: 294, Stop: 479, Start Num: 3
Candidate Starts for BEEST_2:
(Start: 3 @294 has 63 MA's), (Start: 5 @297 has 28 MA's), (17, 414), (19, 459), (20, 462),

Gene: BGlluviae_2 Start: 297, Stop: 479, Start Num: 5
Candidate Starts for BGlluviae_2:
(Start: 3 @294 has 63 MA's), (Start: 5 @297 has 28 MA's), (17, 414), (19, 459), (20, 462),

Gene: BaghaKamala_2 Start: 270, Stop: 455, Start Num: 3
Candidate Starts for BaghaKamala_2:
(Start: 3 @270 has 63 MA's), (Start: 5 @273 has 28 MA's), (17, 390), (19, 435), (20, 438),

Gene: BarrelRoll_2 Start: 294, Stop: 479, Start Num: 3
Candidate Starts for BarrelRoll_2:
(Start: 3 @294 has 63 MA's), (Start: 5 @297 has 28 MA's), (17, 414), (19, 459), (20, 462),

Gene: Beezoo_2 Start: 294, Stop: 476, Start Num: 5
Candidate Starts for Beezoo_2:
(Start: 5 @294 has 28 MA's), (17, 411), (20, 459),

Gene: Bella96_2 Start: 258, Stop: 443, Start Num: 3
Candidate Starts for Bella96_2:
(Start: 3 @258 has 63 MA's), (Start: 5 @261 has 28 MA's), (17, 378), (19, 423), (20, 426),

Gene: Belladonna_2 Start: 294, Stop: 479, Start Num: 3
Candidate Starts for Belladonna_2:
(Start: 3 @294 has 63 MA's), (Start: 5 @297 has 28 MA's), (17, 414), (19, 459), (20, 462),

Gene: Bern_2 Start: 257, Stop: 439, Start Num: 5
Candidate Starts for Bern_2:
(Start: 5 @257 has 28 MA's), (17, 374), (20, 422),

Gene: Biglebops_1 Start: 75, Stop: 353, Start Num: 1
Candidate Starts for Biglebops_1:
(Start: 1 @75 has 7 MA's), (Start: 5 @156 has 28 MA's), (13, 240), (14, 243),

Gene: Blizzard_2 Start: 294, Stop: 479, Start Num: 3
Candidate Starts for Blizzard_2:
(Start: 3 @294 has 63 MA's), (Start: 5 @297 has 28 MA's), (17, 414), (19, 459), (20, 462),

Gene: Boiiii_2 Start: 297, Stop: 479, Start Num: 5
Candidate Starts for Boiiii_2:
(Start: 3 @294 has 63 MA's), (Start: 5 @297 has 28 MA's), (17, 414), (19, 459), (20, 462),

Gene: CREW_2 Start: 294, Stop: 479, Start Num: 3
Candidate Starts for CREW_2:
(Start: 3 @294 has 63 MA's), (Start: 5 @297 has 28 MA's), (17, 414), (19, 459), (20, 462),

Gene: CallaLilly_2 Start: 270, Stop: 455, Start Num: 3
Candidate Starts for CallaLilly_2:
(Start: 3 @270 has 63 MA's), (Start: 5 @273 has 28 MA's), (17, 390), (19, 435), (20, 438),

Gene: Capricorn_2 Start: 294, Stop: 479, Start Num: 3
Candidate Starts for Capricorn_2:
(Start: 3 @294 has 63 MA's), (Start: 5 @297 has 28 MA's), (17, 414), (19, 459), (20, 462),

Gene: CaseJules_2 Start: 297, Stop: 479, Start Num: 5
Candidate Starts for CaseJules_2:
(Start: 3 @294 has 63 MA's), (Start: 5 @297 has 28 MA's), (17, 414), (19, 459), (20, 462),

Gene: CheetoDust_2 Start: 273, Stop: 455, Start Num: 5
Candidate Starts for CheetoDust_2:
(Start: 3 @270 has 63 MA's), (Start: 5 @273 has 28 MA's), (17, 390), (19, 435), (20, 438),

Gene: Clipper_2 Start: 270, Stop: 455, Start Num: 3

Candidate Starts for Clipper_2:

(Start: 3 @270 has 63 MA's), (Start: 5 @273 has 28 MA's), (17, 390), (19, 435), (20, 438),

Gene: CrimD_2 Start: 273, Stop: 455, Start Num: 5

Candidate Starts for CrimD_2:

(Start: 3 @270 has 63 MA's), (Start: 5 @273 has 28 MA's), (17, 390), (20, 438),

Gene: Curiosium_2 Start: 338, Stop: 520, Start Num: 5

Candidate Starts for Curiosium_2:

(Start: 5 @338 has 28 MA's), (7, 341), (11, 410), (14, 428), (16, 440), (17, 455), (18, 467), (20, 503),

Gene: Dalmuri_2 Start: 294, Stop: 479, Start Num: 3

Candidate Starts for Dalmuri_2:

(Start: 3 @294 has 63 MA's), (Start: 5 @297 has 28 MA's), (17, 414), (19, 459), (20, 462),

Gene: Dartin_2 Start: 275, Stop: 472, Start Num: 3

Candidate Starts for Dartin_2:

(Start: 3 @275 has 63 MA's), (Start: 5 @278 has 28 MA's), (10, 329), (12, 368),

Gene: Deby_2 Start: 294, Stop: 479, Start Num: 3

Candidate Starts for Deby_2:

(Start: 3 @294 has 63 MA's), (Start: 5 @297 has 28 MA's), (17, 414), (20, 462),

Gene: Devera_2 Start: 273, Stop: 455, Start Num: 5

Candidate Starts for Devera_2:

(Start: 3 @270 has 63 MA's), (Start: 5 @273 has 28 MA's), (17, 390), (19, 435), (20, 438),

Gene: Dole_2 Start: 270, Stop: 455, Start Num: 3

Candidate Starts for Dole_2:

(Start: 3 @270 has 63 MA's), (Start: 5 @273 has 28 MA's), (17, 390), (19, 435), (20, 438),

Gene: DrHayes_2 Start: 258, Stop: 443, Start Num: 3

Candidate Starts for DrHayes_2:

(Start: 3 @258 has 63 MA's), (Start: 5 @261 has 28 MA's), (17, 378), (19, 423), (20, 426),

Gene: Durfee_2 Start: 294, Stop: 479, Start Num: 3

Candidate Starts for Durfee_2:

(Start: 3 @294 has 63 MA's), (Start: 5 @297 has 28 MA's), (17, 414), (19, 459), (20, 462),

Gene: Efra2_2 Start: 272, Stop: 448, Start Num: 5

Candidate Starts for Efra2_2:

(Start: 3 @269 has 63 MA's), (Start: 5 @272 has 28 MA's), (9, 317), (16, 368), (17, 383), (19, 428), (20, 431),

Gene: Emerson_2 Start: 297, Stop: 479, Start Num: 5

Candidate Starts for Emerson_2:

(Start: 3 @294 has 63 MA's), (Start: 5 @297 has 28 MA's), (17, 414), (20, 462),

Gene: Enkosi_1 Start: 75, Stop: 353, Start Num: 1

Candidate Starts for Enkosi_1:

(Start: 1 @75 has 7 MA's), (Start: 5 @156 has 28 MA's), (13, 240), (14, 243),

Gene: Ganymede_2 Start: 270, Stop: 455, Start Num: 3

Candidate Starts for Ganymede_2:

(Start: 3 @270 has 63 MA's), (Start: 5 @273 has 28 MA's), (17, 390), (20, 438),

Gene: Geraldini_2 Start: 294, Stop: 476, Start Num: 5

Candidate Starts for Geraldini_2:

(Start: 5 @294 has 28 MA's), (17, 411), (20, 459),

Gene: Guanica15_2 Start: 272, Stop: 448, Start Num: 5

Candidate Starts for Guanica15_2:

(Start: 3 @269 has 63 MA's), (Start: 5 @272 has 28 MA's), (9, 317), (15, 365), (16, 368), (17, 383), (19, 428), (20, 431),

Gene: HedwigODU_2 Start: 294, Stop: 479, Start Num: 3

Candidate Starts for HedwigODU_2:

(Start: 3 @294 has 63 MA's), (Start: 5 @297 has 28 MA's), (17, 414), (20, 462),

Gene: Homura_2 Start: 294, Stop: 479, Start Num: 3

Candidate Starts for Homura_2:

(Start: 3 @294 has 63 MA's), (Start: 5 @297 has 28 MA's), (17, 414), (19, 459), (20, 462),

Gene: Hyperbowlee_2 Start: 294, Stop: 479, Start Num: 3

Candidate Starts for Hyperbowlee_2:

(Start: 3 @294 has 63 MA's), (Start: 5 @297 has 28 MA's), (17, 414), (19, 459), (20, 462),

Gene: Illumine_2 Start: 273, Stop: 455, Start Num: 5

Candidate Starts for Illumine_2:

(Start: 3 @270 has 63 MA's), (Start: 5 @273 has 28 MA's), (17, 390), (19, 435), (20, 438),

Gene: Inky_2 Start: 294, Stop: 479, Start Num: 3

Candidate Starts for Inky_2:

(Start: 3 @294 has 63 MA's), (Start: 5 @297 has 28 MA's), (17, 414), (19, 459), (20, 462),

Gene: JAWS_2 Start: 294, Stop: 479, Start Num: 3

Candidate Starts for JAWS_2:

(Start: 3 @294 has 63 MA's), (Start: 5 @297 has 28 MA's), (17, 414), (19, 459), (20, 462),

Gene: Jarvi_2 Start: 294, Stop: 479, Start Num: 3

Candidate Starts for Jarvi_2:

(Start: 3 @294 has 63 MA's), (Start: 5 @297 has 28 MA's), (17, 414), (19, 459), (20, 462),

Gene: Jayhawk_2 Start: 297, Stop: 479, Start Num: 5

Candidate Starts for Jayhawk_2:

(Start: 3 @294 has 63 MA's), (Start: 5 @297 has 28 MA's), (17, 414), (20, 462),

Gene: Jeckyll_2 Start: 294, Stop: 479, Start Num: 3

Candidate Starts for Jeckyll_2:

(Start: 3 @294 has 63 MA's), (Start: 5 @297 has 28 MA's), (17, 414), (19, 459), (20, 462),

Gene: Joy99_2 Start: 270, Stop: 455, Start Num: 3

Candidate Starts for Joy99_2:

(Start: 3 @270 has 63 MA's), (Start: 5 @273 has 28 MA's), (17, 390), (19, 435), (20, 438),

Gene: Krueger_2 Start: 327, Stop: 503, Start Num: 3

Candidate Starts for Krueger_2:
(Start: 3 @327 has 63 MA's), (13, 411), (16, 426), (20, 486),

Gene: LastHope_2 Start: 268, Stop: 450, Start Num: 5
Candidate Starts for LastHope_2:
(Start: 5 @268 has 28 MA's), (8, 301), (11, 340), (16, 370), (19, 430), (20, 433),

Gene: LaterM_2 Start: 270, Stop: 455, Start Num: 3
Candidate Starts for LaterM_2:
(Start: 3 @270 has 63 MA's), (Start: 5 @273 has 28 MA's), (17, 390), (20, 438),

Gene: LilPharaoh_1 Start: 156, Stop: 353, Start Num: 5
Candidate Starts for LilPharaoh_1:
(Start: 1 @75 has 7 MA's), (Start: 5 @156 has 28 MA's), (13, 240), (14, 243),

Gene: LindNT_2 Start: 270, Stop: 455, Start Num: 3
Candidate Starts for LindNT_2:
(Start: 3 @270 has 63 MA's), (Start: 5 @273 has 28 MA's), (17, 390), (19, 435), (20, 438),

Gene: Llorens_2 Start: 294, Stop: 479, Start Num: 3
Candidate Starts for Llorens_2:
(Start: 3 @294 has 63 MA's), (Start: 5 @297 has 28 MA's), (17, 414), (19, 459), (20, 462),

Gene: Lunahalos_2 Start: 297, Stop: 479, Start Num: 5
Candidate Starts for Lunahalos_2:
(Start: 3 @294 has 63 MA's), (Start: 5 @297 has 28 MA's), (17, 414), (19, 459), (20, 462),

Gene: MacKat_2 Start: 270, Stop: 455, Start Num: 3
Candidate Starts for MacKat_2:
(Start: 3 @270 has 63 MA's), (Start: 5 @273 has 28 MA's), (17, 390), (19, 435), (20, 438),

Gene: McMater_2 Start: 275, Stop: 472, Start Num: 3
Candidate Starts for McMater_2:
(Start: 3 @275 has 63 MA's), (Start: 5 @278 has 28 MA's), (10, 329), (12, 368),

Gene: Mdavu_1 Start: 75, Stop: 353, Start Num: 1
Candidate Starts for Mdavu_1:
(Start: 1 @75 has 7 MA's), (Start: 5 @156 has 28 MA's), (13, 240), (14, 243),

Gene: MeaningOfLife_2 Start: 270, Stop: 455, Start Num: 3
Candidate Starts for MeaningOfLife_2:
(Start: 3 @270 has 63 MA's), (Start: 5 @273 has 28 MA's), (17, 390), (19, 435), (20, 438),

Gene: Megsy_2 Start: 273, Stop: 455, Start Num: 5
Candidate Starts for Megsy_2:
(Start: 3 @270 has 63 MA's), (Start: 5 @273 has 28 MA's), (17, 390), (19, 435), (20, 438),

Gene: Murucutumbu_2 Start: 270, Stop: 455, Start Num: 3
Candidate Starts for Murucutumbu_2:
(Start: 3 @270 has 63 MA's), (Start: 5 @273 has 28 MA's), (17, 390), (20, 438),

Gene: Mynx_2 Start: 270, Stop: 455, Start Num: 3
Candidate Starts for Mynx_2:

(Start: 3 @270 has 63 MA's), (Start: 5 @273 has 28 MA's), (17, 390),

Gene: Nikao_1 Start: 75, Stop: 353, Start Num: 1

Candidate Starts for Nikao_1:

(Start: 1 @75 has 7 MA's), (Start: 5 @156 has 28 MA's), (13, 240), (14, 243),

Gene: Niklas_2 Start: 278, Stop: 472, Start Num: 5

Candidate Starts for Niklas_2:

(Start: 3 @275 has 63 MA's), (Start: 5 @278 has 28 MA's), (10, 329), (12, 368),

Gene: Nutello_1 Start: 75, Stop: 353, Start Num: 1

Candidate Starts for Nutello_1:

(Start: 1 @75 has 7 MA's), (Start: 5 @156 has 28 MA's), (13, 240), (14, 243),

Gene: Padfoot_2 Start: 294, Stop: 479, Start Num: 3

Candidate Starts for Padfoot_2:

(Start: 3 @294 has 63 MA's), (Start: 5 @297 has 28 MA's), (17, 414), (19, 459), (20, 462),

Gene: Padpat_2 Start: 294, Stop: 479, Start Num: 3

Candidate Starts for Padpat_2:

(Start: 3 @294 has 63 MA's), (Start: 5 @297 has 28 MA's), (17, 414), (20, 462),

Gene: Peanam_2 Start: 275, Stop: 472, Start Num: 3

Candidate Starts for Peanam_2:

(Start: 3 @275 has 63 MA's), (Start: 5 @278 has 28 MA's), (10, 329), (12, 368),

Gene: Peel_2 Start: 294, Stop: 479, Start Num: 3

Candidate Starts for Peel_2:

(Start: 3 @294 has 63 MA's), (Start: 5 @297 has 28 MA's), (17, 414), (19, 459), (20, 462),

Gene: Piatt_2 Start: 294, Stop: 479, Start Num: 3

Candidate Starts for Piatt_2:

(Start: 3 @294 has 63 MA's), (Start: 5 @297 has 28 MA's), (17, 414), (19, 459), (20, 462),

Gene: Pokerus_2 Start: 273, Stop: 455, Start Num: 5

Candidate Starts for Pokerus_2:

(Start: 3 @270 has 63 MA's), (Start: 5 @273 has 28 MA's), (17, 390), (19, 435), (20, 438),

Gene: Prithvi_2 Start: 270, Stop: 455, Start Num: 3

Candidate Starts for Prithvi_2:

(Start: 3 @270 has 63 MA's), (Start: 5 @273 has 28 MA's), (17, 390), (19, 435), (20, 438),

Gene: QuincyRose_2 Start: 270, Stop: 455, Start Num: 3

Candidate Starts for QuincyRose_2:

(Start: 3 @270 has 63 MA's), (Start: 5 @273 has 28 MA's), (17, 390), (20, 438),

Gene: Ramen_2 Start: 294, Stop: 479, Start Num: 3

Candidate Starts for Ramen_2:

(Start: 3 @294 has 63 MA's), (Start: 5 @297 has 28 MA's), (17, 414), (20, 462),

Gene: Rapunzel97_2 Start: 294, Stop: 479, Start Num: 3

Candidate Starts for Rapunzel97_2:

(Start: 3 @294 has 63 MA's), (Start: 5 @297 has 28 MA's), (17, 414), (20, 462),

Gene: Richo_2 Start: 275, Stop: 472, Start Num: 3

Candidate Starts for Richo_2:

(Start: 3 @275 has 63 MA's), (Start: 5 @278 has 28 MA's), (10, 329), (12, 368),

Gene: Rosmarinus_2 Start: 297, Stop: 479, Start Num: 5

Candidate Starts for Rosmarinus_2:

(Start: 3 @294 has 63 MA's), (Start: 5 @297 has 28 MA's), (17, 414), (19, 459), (20, 462),

Gene: SamuelLPlaqson_2 Start: 258, Stop: 443, Start Num: 3

Candidate Starts for SamuelLPlaqson_2:

(Start: 3 @258 has 63 MA's), (Start: 5 @261 has 28 MA's), (17, 378), (19, 423), (20, 426),

Gene: SgtBeansprout_1 Start: 75, Stop: 353, Start Num: 1

Candidate Starts for SgtBeansprout_1:

(Start: 1 @75 has 7 MA's), (Start: 5 @156 has 28 MA's), (13, 240), (14, 243),

Gene: Shaobing_2 Start: 275, Stop: 472, Start Num: 3

Candidate Starts for Shaobing_2:

(Start: 3 @275 has 63 MA's), (Start: 5 @278 has 28 MA's), (10, 329), (12, 368),

Gene: ShiaSurprise_2 Start: 294, Stop: 479, Start Num: 3

Candidate Starts for ShiaSurprise_2:

(Start: 3 @294 has 63 MA's), (Start: 5 @297 has 28 MA's), (17, 414), (19, 459), (20, 462),

Gene: Slimphazie_2 Start: 294, Stop: 479, Start Num: 3

Candidate Starts for Slimphazie_2:

(Start: 3 @294 has 63 MA's), (Start: 5 @297 has 28 MA's), (17, 414), (20, 462),

Gene: Spock_2 Start: 294, Stop: 479, Start Num: 3

Candidate Starts for Spock_2:

(Start: 3 @294 has 63 MA's), (Start: 5 @297 has 28 MA's), (17, 414), (19, 459), (20, 462),

Gene: Stinson_2 Start: 270, Stop: 455, Start Num: 3

Candidate Starts for Stinson_2:

(Start: 3 @270 has 63 MA's), (Start: 5 @273 has 28 MA's), (17, 390), (20, 438),

Gene: Sulley_2 Start: 294, Stop: 479, Start Num: 3

Candidate Starts for Sulley_2:

(Start: 3 @294 has 63 MA's), (Start: 5 @297 has 28 MA's), (17, 414), (20, 462),

Gene: Syra333_2 Start: 327, Stop: 512, Start Num: 3

Candidate Starts for Syra333_2:

(Start: 3 @327 has 63 MA's), (13, 411), (16, 426), (20, 495),

Gene: Tachez_2 Start: 270, Stop: 455, Start Num: 3

Candidate Starts for Tachez_2:

(Start: 3 @270 has 63 MA's), (Start: 5 @273 has 28 MA's), (17, 390), (20, 438),

Gene: TaiwanKao_2 Start: 273, Stop: 455, Start Num: 5

Candidate Starts for TaiwanKao_2:

(Start: 3 @270 has 63 MA's), (Start: 5 @273 has 28 MA's), (17, 390), (19, 435), (20, 438),

Gene: Teejan_1 Start: 75, Stop: 353, Start Num: 1
Candidate Starts for Teejan_1:
(Start: 1 @75 has 7 MA's), (Start: 5 @156 has 28 MA's), (13, 240), (14, 243),

Gene: TingHuaYa_2 Start: 268, Stop: 450, Start Num: 5
Candidate Starts for TingHuaYa_2:
(Start: 5 @268 has 28 MA's), (11, 340), (16, 370), (19, 430), (20, 433),

Gene: TiniBug_2 Start: 261, Stop: 443, Start Num: 5
Candidate Starts for TiniBug_2:
(Start: 3 @258 has 63 MA's), (Start: 5 @261 has 28 MA's), (17, 378), (19, 423), (20, 426),

Gene: Tiri_2 Start: 270, Stop: 455, Start Num: 3
Candidate Starts for Tiri_2:
(Start: 3 @270 has 63 MA's), (Start: 5 @273 has 28 MA's), (17, 390), (20, 438),

Gene: Topper_2 Start: 297, Stop: 479, Start Num: 5
Candidate Starts for Topper_2:
(Start: 3 @294 has 63 MA's), (Start: 5 @297 has 28 MA's), (17, 414), (19, 459), (20, 462),

Gene: Torres_1 Start: 75, Stop: 353, Start Num: 1
Candidate Starts for Torres_1:
(Start: 1 @75 has 7 MA's), (Start: 5 @156 has 28 MA's), (13, 240), (14, 243),

Gene: TreyKay_2 Start: 270, Stop: 455, Start Num: 3
Candidate Starts for TreyKay_2:
(Start: 3 @270 has 63 MA's), (Start: 5 @273 has 28 MA's), (17, 390), (19, 435), (20, 438),

Gene: TruffulaTree_2 Start: 297, Stop: 479, Start Num: 5
Candidate Starts for TruffulaTree_2:
(Start: 3 @294 has 63 MA's), (Start: 5 @297 has 28 MA's), (17, 414), (19, 459), (20, 462),

Gene: Twitch_2 Start: 294, Stop: 479, Start Num: 3
Candidate Starts for Twitch_2:
(Start: 3 @294 has 63 MA's), (Start: 5 @297 has 28 MA's), (17, 414), (19, 459), (20, 462),

Gene: Urkel_2 Start: 258, Stop: 443, Start Num: 3
Candidate Starts for Urkel_2:
(Start: 3 @258 has 63 MA's), (Start: 5 @261 has 28 MA's), (17, 378), (19, 423), (20, 426),

Gene: Validus_2 Start: 277, Stop: 480, Start Num: 4
Candidate Starts for Validus_2:
(Start: 4 @277 has 1 MA's), (Start: 5 @280 has 28 MA's), (10, 331), (12, 370),

Gene: Veliki_2 Start: 294, Stop: 479, Start Num: 3
Candidate Starts for Veliki_2:
(Start: 3 @294 has 63 MA's), (Start: 5 @297 has 28 MA's), (17, 414), (19, 459), (20, 462),

Gene: Ximenita_2 Start: 327, Stop: 512, Start Num: 3
Candidate Starts for Ximenita_2:
(Start: 3 @327 has 63 MA's), (13, 411), (16, 426), (20, 495),

Gene: YoureAdopted_2 Start: 270, Stop: 455, Start Num: 3

Candidate Starts for YoureAdopted_2:

(Start: 3 @270 has 63 MA's), (Start: 5 @273 has 28 MA's), (17, 390), (19, 435), (20, 438),

Gene: Yuna_2 Start: 313, Stop: 528, Start Num: 2

Candidate Starts for Yuna_2:

(Start: 2 @313 has 1 MA's), (6, 355), (13, 436),

Gene: Yunkel11_2 Start: 272, Stop: 448, Start Num: 5

Candidate Starts for Yunkel11_2:

(Start: 3 @269 has 63 MA's), (Start: 5 @272 has 28 MA's), (9, 317), (15, 365), (16, 368), (17, 383), (19, 428), (20, 431),

Gene: Zabiza_2 Start: 297, Stop: 479, Start Num: 5

Candidate Starts for Zabiza_2:

(Start: 3 @294 has 63 MA's), (Start: 5 @297 has 28 MA's), (17, 414), (20, 462),

Gene: Zavala_2 Start: 270, Stop: 455, Start Num: 3

Candidate Starts for Zavala_2:

(Start: 3 @270 has 63 MA's), (Start: 5 @273 has 28 MA's), (19, 435), (20, 438),