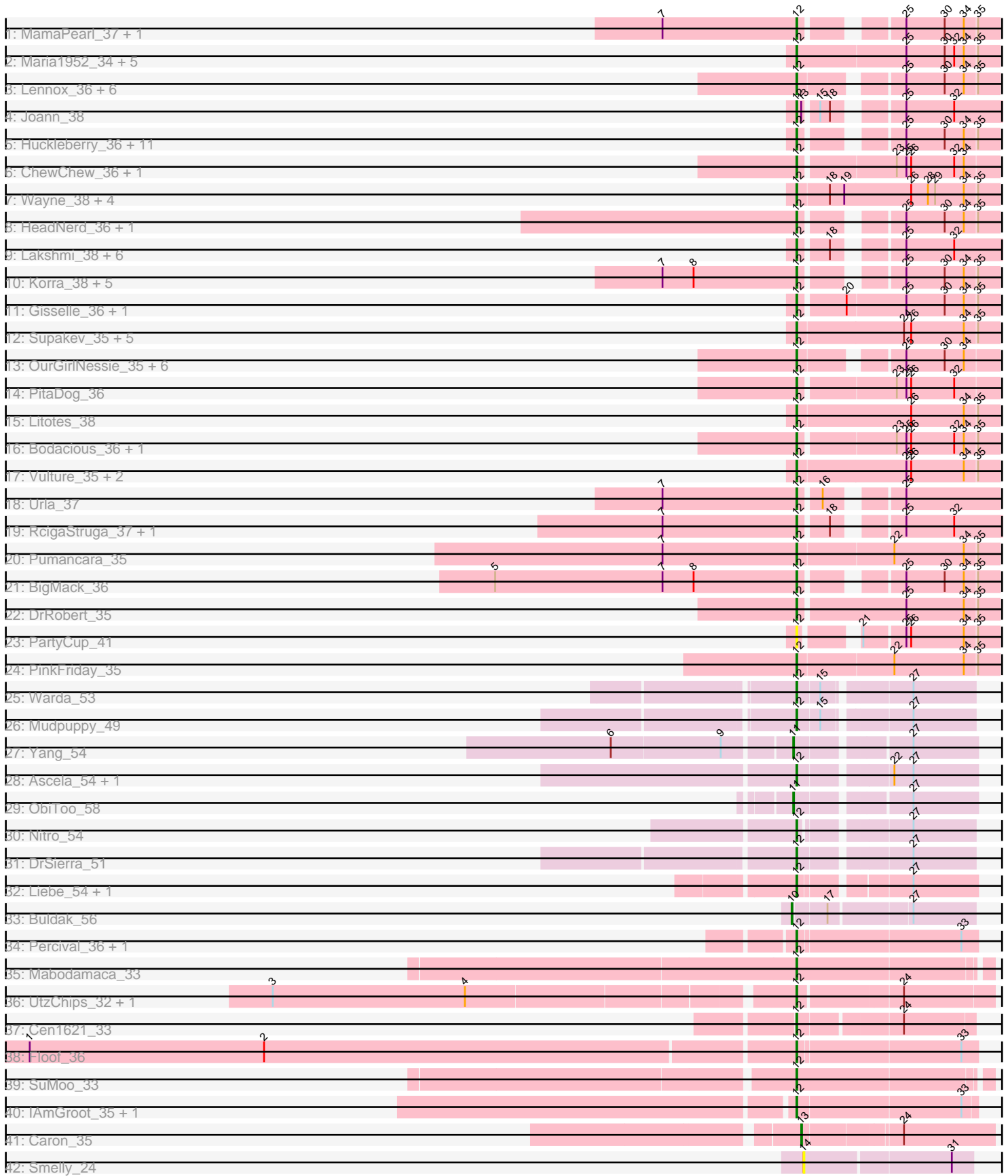


Pham 214152



Note: Tracks are now grouped by subcluster and scaled. Switching in subcluster is indicated by changes in track color. Track scale is now set by default to display the region 30 bp upstream of start 1 to 30 bp downstream of the last possible start. If this default region is judged to be packed too tightly with annotated starts, the track will be further scaled to only show that region of the ORF with annotated starts. This action will be indicated by adding "Zoomed" to the title. For starts, yellow indicates the location of called starts comprised solely of Glimmer/GeneMark auto-annotations, green indicates the location of called starts with at least 1 manual gene annotation.

Pham 214152 Report

This analysis was run 02/22/25 on database version 588.

Pham number 214152 has 103 members, 2 are drafts.

Phages represented in each track:

- Track 1 : MamaPearl_37, EstebanJulior_37
- Track 2 : Maria1952_34, Daiboju_35, Temper16_35, Herb_35, Sergei_35, KingBob_35
- Track 3 : Lennox_36, MeganNoll_38, Jumboset_39, MrGloopy_39, Savage2526_39, RAP15_39, Christian_36
- Track 4 : Joann_38
- Track 5 : Huckleberry_36, Immaculata_38, Potatoes_38, Glenn_39, Carpal_38, Moki_36, Preamble_36, Riverdale_39, Cholula_38, Vallejo_39, BrotherBLo_38, Kittykat_37
- Track 6 : ChewChew_36, Lucy_36
- Track 7 : Wayne_38, CallieOMalley_38, AppleCider_38, Canowicakte_38, Suppi_38
- Track 8 : HeadNerd_36, Bennie_36
- Track 9 : Lakshmi_38, GreenHearts_38, Greenhouse_39, Oxynfrius_38, Misaeng_37, Albanese_38, Nubia_38
- Track 10 : Korra_38, Fluke_39, Zorro_39, Wawa_38, Dino_39, Scuttle_38
- Track 11 : Gisselle_36, DreamTeam_36
- Track 12 : Supakev_35, AustinPowers_35, Eunoia_35, Riovina_35, OMalley_35, Aledel_35
- Track 13 : OurGirlNessie_35, WonderBoy_35, Pterodactyl_36, Makoto_36, CristinaYang_36, Lasagna_35, LilStuart_36
- Track 14 : PitaDog_36
- Track 15 : Litotes_38
- Track 16 : Bodacious_36, Nancia_36
- Track 17 : Vulture_35, HunterDalle_35, Chridison_34
- Track 18 : Urla_37
- Track 19 : RcigaStruga_37, Huntingdon_37
- Track 20 : Pumancara_35
- Track 21 : BigMack_36
- Track 22 : DrRobert_35
- Track 23 : PartyCup_41
- Track 24 : PinkFriday_35
- Track 25 : Warda_53
- Track 26 : Mudpuppy_49
- Track 27 : Yang_54
- Track 28 : Ascela_54, Iter_54
- Track 29 : ObiToo_58
- Track 30 : Nitro_54

- Track 31 : DrSierra_51
- Track 32 : Liebe_54, Maureen_54
- Track 33 : Buldak_56
- Track 34 : Percival_36, Gretchen_36
- Track 35 : Mabodamaca_33
- Track 36 : UtzChips_32, Barnstormer_32
- Track 37 : Cen1621_33
- Track 38 : Floof_36
- Track 39 : SuMoo_33
- Track 40 : IAmGroot_35, GardenState_35
- Track 41 : Caron_35
- Track 42 : Smelly_24

Summary of Final Annotations (See graph section above for start numbers):

The start number called the most often in the published annotations is 12, it was called in 97 of the 101 non-draft genes in the pham.

Genes that call this "Most Annotated" start:

- Albanese_38, Aledel_35, AppleCider_38, Ascela_54, AustinPowers_35, Barnstormer_32, Bennie_36, BigMack_36, Bodacious_36, BrotherBLo_38, CallieOMalley_38, Canowicakte_38, Carpal_38, Cen1621_33, ChewChew_36, Cholula_38, Chridison_34, Christian_36, CristinaYang_36, Daiboju_35, Dino_39, DrRobert_35, DrSierra_51, DreamTeam_36, EstebanJulior_37, Eunoia_35, Floof_36, Fluke_39, GardenState_35, Gisselle_36, Glenn_39, GreenHearts_38, Greenhouse_39, Gretchen_36, HeadNerd_36, Herb_35, Huckleberry_36, HunterDalle_35, Huntingdon_37, IAmGroot_35, Immaculata_38, Iter_54, Joann_38, Jumboset_39, KingBob_35, Kittykat_37, Korra_38, Lakshmi_38, Lasagna_35, Lennox_36, Liebe_54, LilStuart_36, Litotes_38, Lucy_36, Mabodamaca_33, Makoto_36, MamaPearl_37, Maria1952_34, Maureen_54, MeganNoll_38, Misaeng_37, Moki_36, MrGloopy_39, Mudpuppy_49, Nancia_36, Nitro_54, Nubia_38, OMalley_35, OurGirlNessie_35, Oxyntrius_38, PartyCup_41, Percival_36, PinkFriday_35, PitaDog_36, Potatoes_38, Preamble_36, Pterodactyl_36, Pumancara_35, RAP15_39, RcigaStruga_37, Riovina_35, Riverdale_39, Savage2526_39, Scuttle_38, Sergei_35, SuMoo_33, Supakev_35, Suppi_38, Temper16_35, Urla_37, UtzChips_32, Vallejo_39, Vulture_35, Warda_53, Wawa_38, Wayne_38, WonderBoy_35, Zorro_39,

Genes that have the "Most Annotated" start but do not call it:

-

Genes that do not have the "Most Annotated" start:

- Buldak_56, Caron_35, ObiToo_58, Smelly_24, Yang_54,

Summary by start number:

Start 10:

- Found in 1 of 103 (1.0%) of genes in pham
- Manual Annotations of this start: 1 of 101
- Called 100.0% of time when present

- Phage (with cluster) where this start called: Buldak_56 (EB),

Start 11:

- Found in 2 of 103 (1.9%) of genes in pham
- Manual Annotations of this start: 2 of 101
- Called 100.0% of time when present
- Phage (with cluster) where this start called: ObiToo_58 (AZ1), Yang_54 (AZ1),

Start 12:

- Found in 98 of 103 (95.1%) of genes in pham
- Manual Annotations of this start: 97 of 101
- Called 100.0% of time when present
- Phage (with cluster) where this start called: Albanese_38 (AK), Aledel_35 (AK), AppleCider_38 (AK), Ascela_54 (AZ1), AustinPowers_35 (AK), Barnstormer_32 (EH), Bennie_36 (AK), BigMack_36 (AK), Bodacious_36 (AK), BrotherBLo_38 (AK), CallieOMalley_38 (AK), Canowicakte_38 (AK), Carpal_38 (AK), Cen1621_33 (EH), ChewChew_36 (AK), Cholula_38 (AK), Chridison_34 (AK), Christian_36 (AK), CristinaYang_36 (AK), Daiboju_35 (AK), Dino_39 (AK), DrRobert_35 (AK), DrSierra_51 (AZ1), DreamTeam_36 (AK), EstebanJulior_37 (AK), Eunoia_35 (AK), Floop_36 (EH), Fluke_39 (AK), GardenState_35 (EH), Gisselle_36 (AK), Glenn_39 (AK), GreenHearts_38 (AK), Greenhouse_39 (AK), Gretchen_36 (EH), HeadNerd_36 (AK), Herb_35 (AK), Huckleberry_36 (AK), HunterDalle_35 (AK), Huntingdon_37 (AK), IAmGroot_35 (EH), Immaculata_38 (AK), Iter_54 (AZ1), Joann_38 (AK), Jumboset_39 (AK), KingBob_35 (AK), Kittykat_37 (AK), Korra_38 (AK), Lakshmi_38 (AK), Lasagna_35 (AK), Lennox_36 (AK), Liebe_54 (AZ2), LilStuart_36 (AK), Litotes_38 (AK), Lucy_36 (AK), Mabodamaca_33 (EH), Makoto_36 (AK), MamaPearl_37 (AK), Maria1952_34 (AK), Maureen_54 (AZ2), MeganNoll_38 (AK), Misaeng_37 (AK), Moki_36 (AK), MrGloopy_39 (AK), Mudpuppy_49 (AZ1), Nancia_36 (AK), Nitro_54 (AZ1), Nubia_38 (AK), OMalley_35 (AK), OurGirlNessie_35 (AK), Oxyfrius_38 (AK), PartyCup_41 (AK), Percival_36 (EH), PinkFriday_35 (AK), PitaDog_36 (AK), Potatoes_38 (AK), Preamble_36 (AK), Pterodactyl_36 (AK), Pumancara_35 (AK), RAP15_39 (AK), RcigaStruga_37 (AK), Riovina_35 (AK), Riverdale_39 (AK), Savage2526_39 (AK), Scuttle_38 (AK), Sergei_35 (AK), SuMoo_33 (EH), Supakev_35 (AK), Suppi_38 (AK), Temper16_35 (AK), Urla_37 (AK), UtzChips_32 (EH), Vallejo_39 (AK), Vulture_35 (AK), Warda_53 (AZ1), Wawa_38 (AK), Wayne_38 (AK), WonderBoy_35 (AK), Zorro_39 (AK),

Start 13:

- Found in 2 of 103 (1.9%) of genes in pham
- Manual Annotations of this start: 1 of 101
- Called 50.0% of time when present
- Phage (with cluster) where this start called: Caron_35 (EH),

Start 14:

- Found in 1 of 103 (1.0%) of genes in pham
- No Manual Annotations of this start.
- Called 100.0% of time when present
- Phage (with cluster) where this start called: Smelly_24 (GK),

Summary by clusters:

There are 6 clusters represented in this pham: EH, AK, EB, AZ1, AZ2, GK,

Info for manual annotations of cluster AK:

- Start number 12 was manually annotated 79 times for cluster AK.

Info for manual annotations of cluster AZ1:

- Start number 11 was manually annotated 2 times for cluster AZ1.
- Start number 12 was manually annotated 6 times for cluster AZ1.

Info for manual annotations of cluster AZ2:

- Start number 12 was manually annotated 2 times for cluster AZ2.

Info for manual annotations of cluster EB:

- Start number 10 was manually annotated 1 time for cluster EB.

Info for manual annotations of cluster EH:

- Start number 12 was manually annotated 10 times for cluster EH.
- Start number 13 was manually annotated 1 time for cluster EH.

Gene Information:

Gene: Albanese_38 Start: 27081, Stop: 27317, Start Num: 12

Candidate Starts for Albanese_38:

(Start: 12 @27081 has 97 MA's), (18, 27114), (25, 27180), (32, 27240),

Gene: Aledel_35 Start: 26376, Stop: 26621, Start Num: 12

Candidate Starts for Aledel_35:

(Start: 12 @26376 has 97 MA's), (24, 26505), (26, 26514), (34, 26580), (35, 26595),

Gene: AppleCider_38 Start: 26781, Stop: 27026, Start Num: 12

Candidate Starts for AppleCider_38:

(Start: 12 @26781 has 97 MA's), (18, 26820), (19, 26838), (26, 26919), (28, 26940), (29, 26949), (34, 26985), (35, 27000),

Gene: Ascela_54 Start: 38184, Stop: 38390, Start Num: 12

Candidate Starts for Ascela_54:

(Start: 12 @38184 has 97 MA's), (22, 38286), (27, 38310),

Gene: AustinPowers_35 Start: 26374, Stop: 26619, Start Num: 12

Candidate Starts for AustinPowers_35:

(Start: 12 @26374 has 97 MA's), (24, 26503), (26, 26512), (34, 26578), (35, 26593),

Gene: Barnstormer_32 Start: 23785, Stop: 24018, Start Num: 12

Candidate Starts for Barnstormer_32:

(3, 23161), (4, 23401), (Start: 12 @23785 has 97 MA's), (24, 23908),

Gene: Bennie_36 Start: 25580, Stop: 25792, Start Num: 12

Candidate Starts for Bennie_36:

(Start: 12 @25580 has 97 MA's), (25, 25679), (30, 25727), (34, 25751), (35, 25766),

Gene: BigMack_36 Start: 25677, Stop: 25889, Start Num: 12

Candidate Starts for BigMack_36:

(5, 25299), (7, 25509), (8, 25548), (Start: 12 @25677 has 97 MA's), (25, 25776), (30, 25824), (34, 25848), (35, 25863),

Gene: Bodacious_36 Start: 25606, Stop: 25845, Start Num: 12

Candidate Starts for Bodacious_36:

(Start: 12 @25606 has 97 MA's), (23, 25720), (25, 25732), (26, 25738), (32, 25792), (34, 25804), (35, 25819),

Gene: BrotherBLo_38 Start: 26798, Stop: 27010, Start Num: 12

Candidate Starts for BrotherBLo_38:

(Start: 12 @26798 has 97 MA's), (25, 26897), (30, 26945), (34, 26969), (35, 26984),

Gene: Buldak_56 Start: 36115, Stop: 36327, Start Num: 10

Candidate Starts for Buldak_56:

(Start: 10 @36115 has 1 MA's), (17, 36154), (27, 36250),

Gene: CallieOMalley_38 Start: 26781, Stop: 27026, Start Num: 12

Candidate Starts for CallieOMalley_38:

(Start: 12 @26781 has 97 MA's), (18, 26820), (19, 26838), (26, 26919), (28, 26940), (29, 26949), (34, 26985), (35, 27000),

Gene: Canowicakte_38 Start: 26816, Stop: 27061, Start Num: 12

Candidate Starts for Canowicakte_38:

(Start: 12 @26816 has 97 MA's), (18, 26855), (19, 26873), (26, 26954), (28, 26975), (29, 26984), (34, 27020), (35, 27035),

Gene: Caron_35 Start: 24264, Stop: 24491, Start Num: 13

Candidate Starts for Caron_35:

(Start: 13 @24264 has 1 MA's), (24, 24378),

Gene: Carpal_38 Start: 26778, Stop: 26990, Start Num: 12

Candidate Starts for Carpal_38:

(Start: 12 @26778 has 97 MA's), (25, 26877), (30, 26925), (34, 26949), (35, 26964),

Gene: Cen1621_33 Start: 23276, Stop: 23482, Start Num: 12

Candidate Starts for Cen1621_33:

(Start: 12 @23276 has 97 MA's), (24, 23396),

Gene: ChewChew_36 Start: 25601, Stop: 25840, Start Num: 12

Candidate Starts for ChewChew_36:

(Start: 12 @25601 has 97 MA's), (23, 25715), (25, 25727), (26, 25733), (32, 25787), (34, 25799),

Gene: Cholula_38 Start: 26824, Stop: 27036, Start Num: 12

Candidate Starts for Cholula_38:

(Start: 12 @26824 has 97 MA's), (25, 26923), (30, 26971), (34, 26995), (35, 27010),

Gene: Chridison_34 Start: 26344, Stop: 26589, Start Num: 12

Candidate Starts for Chridison_34:

(Start: 12 @26344 has 97 MA's), (25, 26476), (26, 26482), (34, 26548), (35, 26563),

Gene: Christian_36 Start: 25612, Stop: 25833, Start Num: 12

Candidate Starts for Christian_36:

(Start: 12 @25612 has 97 MA's), (25, 25720), (30, 25768), (34, 25792), (35, 25807),

Gene: CristinaYang_36 Start: 25615, Stop: 25836, Start Num: 12
Candidate Starts for CristinaYang_36:
(Start: 12 @25615 has 97 MA's), (25, 25723), (30, 25771), (34, 25795),

Gene: Daiboju_35 Start: 26410, Stop: 26658, Start Num: 12
Candidate Starts for Daiboju_35:
(Start: 12 @26410 has 97 MA's), (25, 26545), (30, 26593), (32, 26605), (34, 26617), (35, 26632),

Gene: Dino_39 Start: 26925, Stop: 27137, Start Num: 12
Candidate Starts for Dino_39:
(7, 26757), (8, 26796), (Start: 12 @26925 has 97 MA's), (25, 27024), (30, 27072), (34, 27096), (35, 27111),

Gene: DrRobert_35 Start: 25374, Stop: 25616, Start Num: 12
Candidate Starts for DrRobert_35:
(Start: 12 @25374 has 97 MA's), (25, 25503), (34, 25575), (35, 25590),

Gene: DrSierra_51 Start: 36255, Stop: 36458, Start Num: 12
Candidate Starts for DrSierra_51:
(Start: 12 @36255 has 97 MA's), (27, 36381),

Gene: DreamTeam_36 Start: 25704, Stop: 25943, Start Num: 12
Candidate Starts for DreamTeam_36:
(Start: 12 @25704 has 97 MA's), (20, 25758), (25, 25830), (30, 25878), (34, 25902), (35, 25917),

Gene: EstebanJulior_37 Start: 26761, Stop: 26973, Start Num: 12
Candidate Starts for EstebanJulior_37:
(7, 26593), (Start: 12 @26761 has 97 MA's), (25, 26860), (30, 26908), (34, 26932), (35, 26947),

Gene: Eunoia_35 Start: 26376, Stop: 26621, Start Num: 12
Candidate Starts for Eunoia_35:
(Start: 12 @26376 has 97 MA's), (24, 26505), (26, 26514), (34, 26580), (35, 26595),

Gene: Floof_36 Start: 25209, Stop: 25427, Start Num: 12
Candidate Starts for Floof_36:
(1, 24261), (2, 24555), (Start: 12 @25209 has 97 MA's), (33, 25407),

Gene: Fluke_39 Start: 27041, Stop: 27253, Start Num: 12
Candidate Starts for Fluke_39:
(7, 26873), (8, 26912), (Start: 12 @27041 has 97 MA's), (25, 27140), (30, 27188), (34, 27212), (35, 27227),

Gene: GardenState_35 Start: 24724, Stop: 24942, Start Num: 12
Candidate Starts for GardenState_35:
(Start: 12 @24724 has 97 MA's), (33, 24925),

Gene: Gisselle_36 Start: 25704, Stop: 25943, Start Num: 12
Candidate Starts for Gisselle_36:
(Start: 12 @25704 has 97 MA's), (20, 25758), (25, 25830), (30, 25878), (34, 25902), (35, 25917),

Gene: Glenn_39 Start: 27032, Stop: 27244, Start Num: 12
Candidate Starts for Glenn_39:

(Start: 12 @27032 has 97 MA's), (25, 27131), (30, 27179), (34, 27203), (35, 27218),

Gene: GreenHearts_38 Start: 27176, Stop: 27412, Start Num: 12

Candidate Starts for GreenHearts_38:

(Start: 12 @27176 has 97 MA's), (18, 27209), (25, 27275), (32, 27335),

Gene: Greenhouse_39 Start: 27089, Stop: 27325, Start Num: 12

Candidate Starts for Greenhouse_39:

(Start: 12 @27089 has 97 MA's), (18, 27122), (25, 27188), (32, 27248),

Gene: Gretchen_36 Start: 26317, Stop: 26535, Start Num: 12

Candidate Starts for Gretchen_36:

(Start: 12 @26317 has 97 MA's), (33, 26515),

Gene: HeadNerd_36 Start: 25580, Stop: 25792, Start Num: 12

Candidate Starts for HeadNerd_36:

(Start: 12 @25580 has 97 MA's), (25, 25679), (30, 25727), (34, 25751), (35, 25766),

Gene: Herb_35 Start: 26409, Stop: 26657, Start Num: 12

Candidate Starts for Herb_35:

(Start: 12 @26409 has 97 MA's), (25, 26544), (30, 26592), (32, 26604), (34, 26616), (35, 26631),

Gene: Huckleberry_36 Start: 25563, Stop: 25775, Start Num: 12

Candidate Starts for Huckleberry_36:

(Start: 12 @25563 has 97 MA's), (25, 25662), (30, 25710), (34, 25734), (35, 25749),

Gene: HunterDalle_35 Start: 26343, Stop: 26588, Start Num: 12

Candidate Starts for HunterDalle_35:

(Start: 12 @26343 has 97 MA's), (25, 26475), (26, 26481), (34, 26547), (35, 26562),

Gene: Huntingdon_37 Start: 26819, Stop: 27055, Start Num: 12

Candidate Starts for Huntingdon_37:

(7, 26651), (Start: 12 @26819 has 97 MA's), (18, 26852), (25, 26918), (32, 26978),

Gene: IAmGroot_35 Start: 25389, Stop: 25607, Start Num: 12

Candidate Starts for IAmGroot_35:

(Start: 12 @25389 has 97 MA's), (33, 25590),

Gene: Immaculata_38 Start: 26823, Stop: 27035, Start Num: 12

Candidate Starts for Immaculata_38:

(Start: 12 @26823 has 97 MA's), (25, 26922), (30, 26970), (34, 26994), (35, 27009),

Gene: Iter_54 Start: 38176, Stop: 38382, Start Num: 12

Candidate Starts for Iter_54:

(Start: 12 @38176 has 97 MA's), (22, 38278), (27, 38302),

Gene: Joann_38 Start: 27052, Stop: 27285, Start Num: 12

Candidate Starts for Joann_38:

(Start: 12 @27052 has 97 MA's), (Start: 13 @27058 has 1 MA's), (15, 27073), (18, 27085), (25, 27151), (32, 27211),

Gene: Jumboset_39 Start: 26907, Stop: 27152, Start Num: 12

Candidate Starts for Jumboset_39:

(Start: 12 @26907 has 97 MA's), (25, 27039), (30, 27087), (34, 27111), (35, 27126),

Gene: KingBob_35 Start: 26410, Stop: 26658, Start Num: 12

Candidate Starts for KingBob_35:

(Start: 12 @26410 has 97 MA's), (25, 26545), (30, 26593), (32, 26605), (34, 26617), (35, 26632),

Gene: Kittykat_37 Start: 25831, Stop: 26043, Start Num: 12

Candidate Starts for Kittykat_37:

(Start: 12 @25831 has 97 MA's), (25, 25930), (30, 25978), (34, 26002), (35, 26017),

Gene: Korra_38 Start: 26777, Stop: 26989, Start Num: 12

Candidate Starts for Korra_38:

(7, 26609), (8, 26648), (Start: 12 @26777 has 97 MA's), (25, 26876), (30, 26924), (34, 26948), (35, 26963),

Gene: Lakshmi_38 Start: 27055, Stop: 27291, Start Num: 12

Candidate Starts for Lakshmi_38:

(Start: 12 @27055 has 97 MA's), (18, 27088), (25, 27154), (32, 27214),

Gene: Lasagna_35 Start: 25389, Stop: 25610, Start Num: 12

Candidate Starts for Lasagna_35:

(Start: 12 @25389 has 97 MA's), (25, 25497), (30, 25545), (34, 25569),

Gene: Lennox_36 Start: 25600, Stop: 25821, Start Num: 12

Candidate Starts for Lennox_36:

(Start: 12 @25600 has 97 MA's), (25, 25708), (30, 25756), (34, 25780), (35, 25795),

Gene: Liebe_54 Start: 39610, Stop: 39810, Start Num: 12

Candidate Starts for Liebe_54:

(Start: 12 @39610 has 97 MA's), (27, 39730),

Gene: LilStuart_36 Start: 25603, Stop: 25824, Start Num: 12

Candidate Starts for LilStuart_36:

(Start: 12 @25603 has 97 MA's), (25, 25711), (30, 25759), (34, 25783),

Gene: Litotes_38 Start: 26766, Stop: 27014, Start Num: 12

Candidate Starts for Litotes_38:

(Start: 12 @26766 has 97 MA's), (26, 26907), (34, 26973), (35, 26988),

Gene: Lucy_36 Start: 25582, Stop: 25821, Start Num: 12

Candidate Starts for Lucy_36:

(Start: 12 @25582 has 97 MA's), (23, 25696), (25, 25708), (26, 25714), (32, 25768), (34, 25780),

Gene: Mabodamaca_33 Start: 24562, Stop: 24792, Start Num: 12

Candidate Starts for Mabodamaca_33:

(Start: 12 @24562 has 97 MA's),

Gene: Makoto_36 Start: 25611, Stop: 25832, Start Num: 12

Candidate Starts for Makoto_36:

(Start: 12 @25611 has 97 MA's), (25, 25719), (30, 25767), (34, 25791),

Gene: MamaPearl_37 Start: 26761, Stop: 26973, Start Num: 12

Candidate Starts for MamaPearl_37:

(7, 26593), (Start: 12 @26761 has 97 MA's), (25, 26860), (30, 26908), (34, 26932), (35, 26947),

Gene: Maria1952_34 Start: 26409, Stop: 26657, Start Num: 12

Candidate Starts for Maria1952_34:

(Start: 12 @26409 has 97 MA's), (25, 26544), (30, 26592), (32, 26604), (34, 26616), (35, 26631),

Gene: Maureen_54 Start: 39609, Stop: 39809, Start Num: 12

Candidate Starts for Maureen_54:

(Start: 12 @39609 has 97 MA's), (27, 39729),

Gene: MeganNoll_38 Start: 26964, Stop: 27209, Start Num: 12

Candidate Starts for MeganNoll_38:

(Start: 12 @26964 has 97 MA's), (25, 27096), (30, 27144), (34, 27168), (35, 27183),

Gene: Misaeng_37 Start: 27052, Stop: 27288, Start Num: 12

Candidate Starts for Misaeng_37:

(Start: 12 @27052 has 97 MA's), (18, 27085), (25, 27151), (32, 27211),

Gene: Moki_36 Start: 25725, Stop: 25937, Start Num: 12

Candidate Starts for Moki_36:

(Start: 12 @25725 has 97 MA's), (25, 25824), (30, 25872), (34, 25896), (35, 25911),

Gene: MrGloopy_39 Start: 26893, Stop: 27138, Start Num: 12

Candidate Starts for MrGloopy_39:

(Start: 12 @26893 has 97 MA's), (25, 27025), (30, 27073), (34, 27097), (35, 27112),

Gene: Mudpuppy_49 Start: 37133, Stop: 37333, Start Num: 12

Candidate Starts for Mudpuppy_49:

(Start: 12 @37133 has 97 MA's), (15, 37160), (27, 37256),

Gene: Nancia_36 Start: 25606, Stop: 25845, Start Num: 12

Candidate Starts for Nancia_36:

(Start: 12 @25606 has 97 MA's), (23, 25720), (25, 25732), (26, 25738), (32, 25792), (34, 25804), (35, 25819),

Gene: Nitro_54 Start: 39215, Stop: 39412, Start Num: 12

Candidate Starts for Nitro_54:

(Start: 12 @39215 has 97 MA's), (27, 39335),

Gene: Nubia_38 Start: 27006, Stop: 27242, Start Num: 12

Candidate Starts for Nubia_38:

(Start: 12 @27006 has 97 MA's), (18, 27039), (25, 27105), (32, 27165),

Gene: OMalley_35 Start: 26376, Stop: 26621, Start Num: 12

Candidate Starts for OMalley_35:

(Start: 12 @26376 has 97 MA's), (24, 26505), (26, 26514), (34, 26580), (35, 26595),

Gene: ObiToo_58 Start: 38862, Stop: 39068, Start Num: 11

Candidate Starts for ObiToo_58:

(Start: 11 @38862 has 2 MA's), (27, 38988),

Gene: OurGirlNessie_35 Start: 25355, Stop: 25576, Start Num: 12

Candidate Starts for OurGirlNessie_35:

(Start: 12 @25355 has 97 MA's), (25, 25463), (30, 25511), (34, 25535),

Gene: Oxynfrius_38 Start: 27033, Stop: 27269, Start Num: 12

Candidate Starts for Oxynfrius_38:

(Start: 12 @27033 has 97 MA's), (18, 27066), (25, 27132), (32, 27192),

Gene: PartyCup_41 Start: 27013, Stop: 27228, Start Num: 12

Candidate Starts for PartyCup_41:

(Start: 12 @27013 has 97 MA's), (21, 27067), (25, 27115), (26, 27121), (34, 27187), (35, 27202),

Gene: Percival_36 Start: 26151, Stop: 26369, Start Num: 12

Candidate Starts for Percival_36:

(Start: 12 @26151 has 97 MA's), (33, 26349),

Gene: PinkFriday_35 Start: 25525, Stop: 25770, Start Num: 12

Candidate Starts for PinkFriday_35:

(Start: 12 @25525 has 97 MA's), (22, 25642), (34, 25729), (35, 25744),

Gene: PitaDog_36 Start: 25594, Stop: 25833, Start Num: 12

Candidate Starts for PitaDog_36:

(Start: 12 @25594 has 97 MA's), (23, 25708), (25, 25720), (26, 25726), (32, 25780),

Gene: Potatoes_38 Start: 26824, Stop: 27036, Start Num: 12

Candidate Starts for Potatoes_38:

(Start: 12 @26824 has 97 MA's), (25, 26923), (30, 26971), (34, 26995), (35, 27010),

Gene: Preamble_36 Start: 25688, Stop: 25900, Start Num: 12

Candidate Starts for Preamble_36:

(Start: 12 @25688 has 97 MA's), (25, 25787), (30, 25835), (34, 25859), (35, 25874),

Gene: Pterodactyl_36 Start: 25592, Stop: 25813, Start Num: 12

Candidate Starts for Pterodactyl_36:

(Start: 12 @25592 has 97 MA's), (25, 25700), (30, 25748), (34, 25772),

Gene: Pumancara_35 Start: 25437, Stop: 25682, Start Num: 12

Candidate Starts for Pumancara_35:

(7, 25269), (Start: 12 @25437 has 97 MA's), (22, 25554), (34, 25641), (35, 25656),

Gene: RAP15_39 Start: 26964, Stop: 27209, Start Num: 12

Candidate Starts for RAP15_39:

(Start: 12 @26964 has 97 MA's), (25, 27096), (30, 27144), (34, 27168), (35, 27183),

Gene: RcigaStruga_37 Start: 26819, Stop: 27055, Start Num: 12

Candidate Starts for RcigaStruga_37:

(7, 26651), (Start: 12 @26819 has 97 MA's), (18, 26852), (25, 26918), (32, 26978),

Gene: Riovina_35 Start: 26376, Stop: 26621, Start Num: 12

Candidate Starts for Riovina_35:

(Start: 12 @26376 has 97 MA's), (24, 26505), (26, 26514), (34, 26580), (35, 26595),

Gene: Riverdale_39 Start: 26962, Stop: 27174, Start Num: 12

Candidate Starts for Riverdale_39:

(Start: 12 @26962 has 97 MA's), (25, 27061), (30, 27109), (34, 27133), (35, 27148),

Gene: Savage2526_39 Start: 26958, Stop: 27203, Start Num: 12
Candidate Starts for Savage2526_39:
(Start: 12 @26958 has 97 MA's), (25, 27090), (30, 27138), (34, 27162), (35, 27177),

Gene: Scuttle_38 Start: 26951, Stop: 27163, Start Num: 12
Candidate Starts for Scuttle_38:
(7, 26783), (8, 26822), (Start: 12 @26951 has 97 MA's), (25, 27050), (30, 27098), (34, 27122), (35, 27137),

Gene: Sergei_35 Start: 26410, Stop: 26658, Start Num: 12
Candidate Starts for Sergei_35:
(Start: 12 @26410 has 97 MA's), (25, 26545), (30, 26593), (32, 26605), (34, 26617), (35, 26632),

Gene: Smelly_24 Start: 17195, Stop: 17398, Start Num: 14
Candidate Starts for Smelly_24:
(14, 17195), (31, 17372),

Gene: SuMoo_33 Start: 23508, Stop: 23738, Start Num: 12
Candidate Starts for SuMoo_33:
(Start: 12 @23508 has 97 MA's),

Gene: Supakev_35 Start: 26376, Stop: 26621, Start Num: 12
Candidate Starts for Supakev_35:
(Start: 12 @26376 has 97 MA's), (24, 26505), (26, 26514), (34, 26580), (35, 26595),

Gene: Suppi_38 Start: 26816, Stop: 27061, Start Num: 12
Candidate Starts for Suppi_38:
(Start: 12 @26816 has 97 MA's), (18, 26855), (19, 26873), (26, 26954), (28, 26975), (29, 26984), (34, 27020), (35, 27035),

Gene: Temper16_35 Start: 26410, Stop: 26658, Start Num: 12
Candidate Starts for Temper16_35:
(Start: 12 @26410 has 97 MA's), (25, 26545), (30, 26593), (32, 26605), (34, 26617), (35, 26632),

Gene: Urla_37 Start: 26775, Stop: 26990, Start Num: 12
Candidate Starts for Urla_37:
(7, 26607), (Start: 12 @26775 has 97 MA's), (16, 26799), (25, 26874),

Gene: UtzChips_32 Start: 23770, Stop: 24003, Start Num: 12
Candidate Starts for UtzChips_32:
(3, 23146), (4, 23386), (Start: 12 @23770 has 97 MA's), (24, 23893),

Gene: Vallejo_39 Start: 26965, Stop: 27177, Start Num: 12
Candidate Starts for Vallejo_39:
(Start: 12 @26965 has 97 MA's), (25, 27064), (30, 27112), (34, 27136), (35, 27151),

Gene: Vulture_35 Start: 26343, Stop: 26588, Start Num: 12
Candidate Starts for Vulture_35:
(Start: 12 @26343 has 97 MA's), (25, 26475), (26, 26481), (34, 26547), (35, 26562),

Gene: Warda_53 Start: 37573, Stop: 37773, Start Num: 12
Candidate Starts for Warda_53:

(Start: 12 @37573 has 97 MA's), (15, 37600), (27, 37696),

Gene: Wawa_38 Start: 26798, Stop: 27010, Start Num: 12

Candidate Starts for Wawa_38:

(7, 26630), (8, 26669), (Start: 12 @26798 has 97 MA's), (25, 26897), (30, 26945), (34, 26969), (35, 26984),

Gene: Wayne_38 Start: 26862, Stop: 27107, Start Num: 12

Candidate Starts for Wayne_38:

(Start: 12 @26862 has 97 MA's), (18, 26901), (19, 26919), (26, 27000), (28, 27021), (29, 27030), (34, 27066), (35, 27081),

Gene: WonderBoy_35 Start: 25584, Stop: 25805, Start Num: 12

Candidate Starts for WonderBoy_35:

(Start: 12 @25584 has 97 MA's), (25, 25692), (30, 25740), (34, 25764),

Gene: Yang_54 Start: 38204, Stop: 38410, Start Num: 11

Candidate Starts for Yang_54:

(6, 37991), (9, 38126), (Start: 11 @38204 has 2 MA's), (27, 38330),

Gene: Zorro_39 Start: 26925, Stop: 27137, Start Num: 12

Candidate Starts for Zorro_39:

(7, 26757), (8, 26796), (Start: 12 @26925 has 97 MA's), (25, 27024), (30, 27072), (34, 27096), (35, 27111),