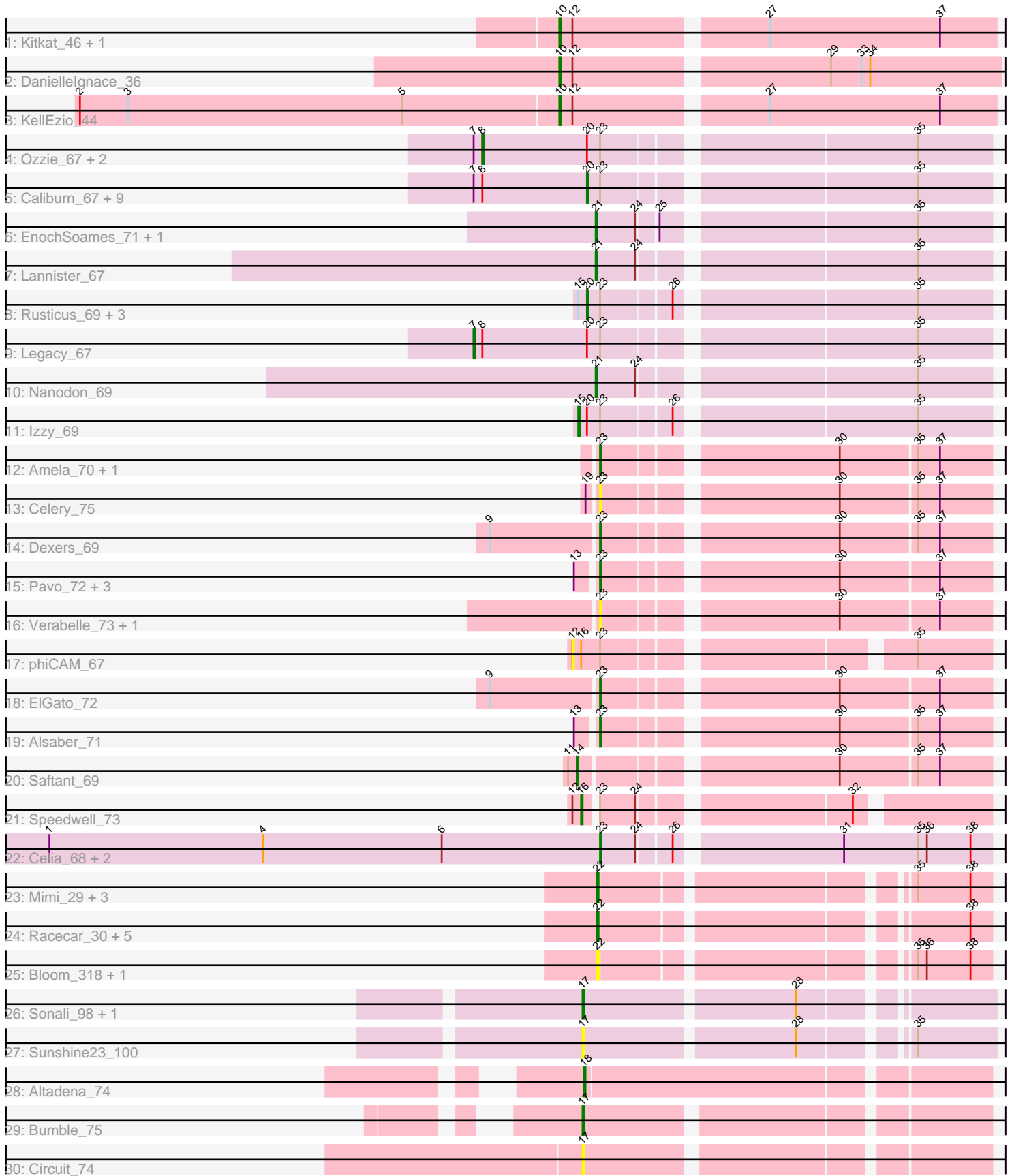


Pham 214285



Note: Tracks are now grouped by subcluster and scaled. Switching in subcluster is indicated by changes in track color. Track scale is now set by default to display the region 30 bp upstream of start 1 to 30 bp downstream of the last possible start. If this default region is judged to be packed too tightly with annotated starts, the track will be further scaled to only show that region of the ORF with annotated starts. This action will be indicated by adding "Zoomed" to the title. For starts, yellow indicates the location of called starts comprised solely of Glimmer/GeneMark auto-annotations, green indicates the location of called starts with at least 1 manual gene annotation.

Pham 214285 Report

This analysis was run 02/22/25 on database version 588.

Pham number 214285 has 63 members, 14 are drafts.

Phages represented in each track:

- Track 1 : Kitkat_46, BeatusComedenti_45
- Track 2 : DanielleIgnace_36
- Track 3 : Kellezio_44
- Track 4 : Ozzie_67, BeardedLady_68, Aaronocolus_67
- Track 5 : Caliburn_67, Phettuccine_67, Unstoppable_67, Indigo_66, Bovely_67, Hydra_70, Nerdos_66, Esperer_68, SunsetPointe_67, Leviticus_68
- Track 6 : EnochSoames_71, Oliynyk_69
- Track 7 : Lannister_67
- Track 8 : Rusticus_69, Eddasa_70, BryanRecycles_69, Jash_69
- Track 9 : Legacy_67
- Track 10 : Nanodon_69
- Track 11 : Izzy_69
- Track 12 : Amela_70, Verse_71
- Track 13 : Celery_75
- Track 14 : Dexers_69
- Track 15 : Pavo_72, Kaine_71, Conan_72, Provolone_72
- Track 16 : Verabelle_73, Vanseggelen_76
- Track 17 : phiCAM_67
- Track 18 : ElGato_72
- Track 19 : Alsaber_71
- Track 20 : Saftant_69
- Track 21 : Speedwell_73
- Track 22 : Celia_68, Itza_71, Urza_70
- Track 23 : Mimi_29, Mimi_314, Patbob_27, Patbob_317
- Track 24 : Racecar_30, GoldenEssence_15, Racecar_319, Talia1610_315, GoldenEssence_297, Talia1610_29
- Track 25 : Bloom_318, Bloom_31
- Track 26 : Sonali_98, Maruru_99
- Track 27 : Sunshine23_100
- Track 28 : Altadena_74
- Track 29 : Bumble_75
- Track 30 : Circuit_74

Summary of Final Annotations (See graph section above for start numbers):

The start number called the most often in the published annotations is 20, it was called in 14 of the 49 non-draft genes in the pham.

Genes that call this "Most Annotated" start:

- Bovely_67, BryanRecycles_69, Caliburn_67, Eddasa_70, Esperer_68, Hydra_70, Indigo_66, Jash_69, Leviticus_68, Nerdos_66, Phettuccine_67, Rusticus_69, SunsetPointe_67, Unstoppable_67,

Genes that have the "Most Annotated" start but do not call it:

- Aaronocolus_67, BeardedLady_68, Izzy_69, Legacy_67, Ozzie_67,

Genes that do not have the "Most Annotated" start:

- Alsaber_71, Altadena_74, Amela_70, BeatusComedenti_45, Bloom_31, Bloom_318, Bumble_75, Celery_75, Celia_68, Circuit_74, Conan_72, DanielleIgnace_36, Dexters_69, ElGato_72, EnochSoames_71, GoldenEssence_15, GoldenEssence_297, Itza_71, Kaine_71, KellEzio_44, Kitkat_46, Lannister_67, Maruru_99, Mimi_29, Mimi_314, Nanodon_69, Oliynyk_69, Patbob_27, Patbob_317, Pavo_72, Provolone_72, Racecar_30, Racecar_319, Saftant_69, Sonali_98, Speedwell_73, Sunshine23_100, Talia1610_29, Talia1610_315, Urza_70, Vanseggelen_76, Verabelle_73, Verse_71, phiCAM_67,

Summary by start number:

Start 7:

- Found in 14 of 63 (22.2%) of genes in pham
- Manual Annotations of this start: 1 of 49
- Called 7.1% of time when present
- Phage (with cluster) where this start called: Legacy_67 (BD1),

Start 8:

- Found in 14 of 63 (22.2%) of genes in pham
- Manual Annotations of this start: 3 of 49
- Called 21.4% of time when present
- Phage (with cluster) where this start called: Aaronocolus_67 (BD1), BeardedLady_68 (BD1), Ozzie_67 (BD1),

Start 10:

- Found in 4 of 63 (6.3%) of genes in pham
- Manual Annotations of this start: 4 of 49
- Called 100.0% of time when present
- Phage (with cluster) where this start called: BeatusComedenti_45 (AT), DanielleIgnace_36 (AT), KellEzio_44 (AT), Kitkat_46 (AT),

Start 12:

- Found in 6 of 63 (9.5%) of genes in pham
- No Manual Annotations of this start.
- Called 16.7% of time when present
- Phage (with cluster) where this start called: phiCAM_67 (BD3),

Start 14:

- Found in 1 of 63 (1.6%) of genes in pham
- Manual Annotations of this start: 1 of 49

- Called 100.0% of time when present
- Phage (with cluster) where this start called: Saftant_69 (BD3),

Start 15:

- Found in 5 of 63 (7.9%) of genes in pham
- Manual Annotations of this start: 1 of 49
- Called 20.0% of time when present
- Phage (with cluster) where this start called: Izzy_69 (BD1),

Start 16:

- Found in 2 of 63 (3.2%) of genes in pham
- Manual Annotations of this start: 1 of 49
- Called 50.0% of time when present
- Phage (with cluster) where this start called: Speedwell_73 (BD3),

Start 17:

- Found in 5 of 63 (7.9%) of genes in pham
- Manual Annotations of this start: 2 of 49
- Called 100.0% of time when present
- Phage (with cluster) where this start called: Bumble_75 (FH), Circuit_74 (FH), Maruru_99 (FG), Sonali_98 (FG), Sunshine23_100 (FG),

Start 18:

- Found in 1 of 63 (1.6%) of genes in pham
- Manual Annotations of this start: 1 of 49
- Called 100.0% of time when present
- Phage (with cluster) where this start called: Altadena_74 (FH),

Start 20:

- Found in 19 of 63 (30.2%) of genes in pham
- Manual Annotations of this start: 14 of 49
- Called 73.7% of time when present
- Phage (with cluster) where this start called: Bovely_67 (BD1), BryanRecycles_69 (BD1), Caliburn_67 (BD1), Eddasa_70 (BD1), Esperer_68 (BD1), Hydra_70 (BD1), Indigo_66 (BD1), Jash_69 (BD1), Leviticus_68 (BD1), Nerdos_66 (BD1), Phettuccine_67 (BD1), Rusticus_69 (BD1), SunsetPointe_67 (BD1), Unstoppable_67 (BD1),

Start 21:

- Found in 4 of 63 (6.3%) of genes in pham
- Manual Annotations of this start: 3 of 49
- Called 100.0% of time when present
- Phage (with cluster) where this start called: EnochSoames_71 (BD1), Lannister_67 (BD1), Nanodon_69 (BD1), Oliyinyk_69 (BD1),

Start 22:

- Found in 12 of 63 (19.0%) of genes in pham
- Manual Annotations of this start: 6 of 49
- Called 100.0% of time when present
- Phage (with cluster) where this start called: Bloom_31 (FC), Bloom_318 (FC), GoldenEssence_15 (FC), GoldenEssence_297 (FC), Mimi_29 (FC), Mimi_314 (FC), Patbob_27 (FC), Patbob_317 (FC), Racecar_30 (FC), Racecar_319 (FC), Talia1610_29 (FC), Talia1610_315 (FC),

Start 23:

- Found in 36 of 63 (57.1%) of genes in pham
- Manual Annotations of this start: 12 of 49
- Called 41.7% of time when present
- Phage (with cluster) where this start called: Alsaber_71 (BD3), Amela_70 (BD3), Celery_75 (BD3), Celia_68 (BD6), Conan_72 (BD3), Dexers_69 (BD3), ElGato_72 (BD3), Itza_71 (BD6), Kaine_71 (BD3), Pavo_72 (BD3), Provolone_72 (BD3), Urza_70 (BD6), Vanseggelen_76 (BD3), Verabelle_73 (BD3), Verse_71 (BD3),

Summary by clusters:

There are 7 clusters represented in this pham: FC, BD6, BD1, AT, BD3, FG, FH,

Info for manual annotations of cluster AT:

- Start number 10 was manually annotated 4 times for cluster AT.

Info for manual annotations of cluster BD1:

- Start number 7 was manually annotated 1 time for cluster BD1.
- Start number 8 was manually annotated 3 times for cluster BD1.
- Start number 15 was manually annotated 1 time for cluster BD1.
- Start number 20 was manually annotated 14 times for cluster BD1.
- Start number 21 was manually annotated 3 times for cluster BD1.

Info for manual annotations of cluster BD3:

- Start number 14 was manually annotated 1 time for cluster BD3.
- Start number 16 was manually annotated 1 time for cluster BD3.
- Start number 23 was manually annotated 9 times for cluster BD3.

Info for manual annotations of cluster BD6:

- Start number 23 was manually annotated 3 times for cluster BD6.

Info for manual annotations of cluster FC:

- Start number 22 was manually annotated 6 times for cluster FC.

Info for manual annotations of cluster FG:

- Start number 17 was manually annotated 1 time for cluster FG.

Info for manual annotations of cluster FH:

- Start number 17 was manually annotated 1 time for cluster FH.
- Start number 18 was manually annotated 1 time for cluster FH.

Gene Information:

Gene: Aaronocolus_67 Start: 45850, Stop: 45521, Start Num: 8

Candidate Starts for Aaronocolus_67:

(Start: 7 @45856 has 1 MA's), (Start: 8 @45850 has 3 MA's), (Start: 20 @45778 has 14 MA's), (Start: 23 @45769 has 12 MA's), (35, 45571),

Gene: Alsaber_71 Start: 45844, Stop: 45596, Start Num: 23

Candidate Starts for Alsaber_71:

(13, 45856), (Start: 23 @45844 has 12 MA's), (30, 45697), (35, 45646), (37, 45631),

Gene: Altadena_74 Start: 46046, Stop: 45783, Start Num: 18

Candidate Starts for Altadena_74:

(Start: 18 @46046 has 1 MA's),

Gene: Amela_70 Start: 46491, Stop: 46243, Start Num: 23

Candidate Starts for Amela_70:

(Start: 23 @46491 has 12 MA's), (30, 46344), (35, 46293), (37, 46278),

Gene: BeardedLady_68 Start: 46230, Stop: 45901, Start Num: 8

Candidate Starts for BeardedLady_68:

(Start: 7 @46236 has 1 MA's), (Start: 8 @46230 has 3 MA's), (Start: 20 @46158 has 14 MA's), (Start: 23 @46149 has 12 MA's), (35, 45951),

Gene: BeatusComedenti_45 Start: 32843, Stop: 33130, Start Num: 10

Candidate Starts for BeatusComedenti_45:

(Start: 10 @32843 has 4 MA's), (12, 32852), (27, 32975), (37, 33092),

Gene: Bloom_318 Start: 187214, Stop: 187450, Start Num: 22

Candidate Starts for Bloom_318:

(Start: 22 @187214 has 6 MA's), (35, 187400), (36, 187406), (38, 187436),

Gene: Bloom_31 Start: 13739, Stop: 13975, Start Num: 22

Candidate Starts for Bloom_31:

(Start: 22 @13739 has 6 MA's), (35, 13925), (36, 13931), (38, 13961),

Gene: Bovely_67 Start: 45781, Stop: 45524, Start Num: 20

Candidate Starts for Bovely_67:

(Start: 7 @45859 has 1 MA's), (Start: 8 @45853 has 3 MA's), (Start: 20 @45781 has 14 MA's), (Start: 23 @45772 has 12 MA's), (35, 45574),

Gene: BryanRecycles_69 Start: 46276, Stop: 46019, Start Num: 20

Candidate Starts for BryanRecycles_69:

(Start: 15 @46282 has 1 MA's), (Start: 20 @46276 has 14 MA's), (Start: 23 @46267 has 12 MA's), (26, 46222), (35, 46069),

Gene: Bumble_75 Start: 47160, Stop: 46906, Start Num: 17

Candidate Starts for Bumble_75:

(Start: 17 @47160 has 2 MA's),

Gene: Caliburn_67 Start: 46166, Stop: 45909, Start Num: 20

Candidate Starts for Caliburn_67:

(Start: 7 @46244 has 1 MA's), (Start: 8 @46238 has 3 MA's), (Start: 20 @46166 has 14 MA's), (Start: 23 @46157 has 12 MA's), (35, 45959),

Gene: Celery_75 Start: 45542, Stop: 45294, Start Num: 23

Candidate Starts for Celery_75:

(19, 45548), (Start: 23 @45542 has 12 MA's), (30, 45395), (35, 45344), (37, 45329),

Gene: Celia_68 Start: 45223, Stop: 44972, Start Num: 23

Candidate Starts for Celia_68:

(1, 45601), (4, 45454), (6, 45331), (Start: 23 @45223 has 12 MA's), (24, 45199), (26, 45178), (31, 45073), (35, 45022), (36, 45016), (38, 44986),

Gene: Circuit_74 Start: 47524, Stop: 47270, Start Num: 17
Candidate Starts for Circuit_74:
(Start: 17 @47524 has 2 MA's),

Gene: Conan_72 Start: 46096, Stop: 45848, Start Num: 23
Candidate Starts for Conan_72:
(13, 46108), (Start: 23 @46096 has 12 MA's), (30, 45949), (37, 45883),

Gene: DanielleIgnace_36 Start: 30716, Stop: 31006, Start Num: 10
Candidate Starts for DanielleIgnace_36:
(Start: 10 @30716 has 4 MA's), (12, 30725), (29, 30890), (33, 30911), (34, 30917),

Gene: Dexers_69 Start: 46070, Stop: 45822, Start Num: 23
Candidate Starts for Dexers_69:
(9, 46142), (Start: 23 @46070 has 12 MA's), (30, 45923), (35, 45872), (37, 45857),

Gene: Eddasa_70 Start: 46815, Stop: 46558, Start Num: 20
Candidate Starts for Eddasa_70:
(Start: 15 @46821 has 1 MA's), (Start: 20 @46815 has 14 MA's), (Start: 23 @46806 has 12 MA's), (26, 46761), (35, 46608),

Gene: ElGato_72 Start: 45973, Stop: 45725, Start Num: 23
Candidate Starts for ElGato_72:
(9, 46045), (Start: 23 @45973 has 12 MA's), (30, 45826), (37, 45760),

Gene: EnochSoames_71 Start: 46067, Stop: 45816, Start Num: 21
Candidate Starts for EnochSoames_71:
(Start: 21 @46067 has 3 MA's), (24, 46040), (25, 46028), (35, 45866),

Gene: Esperer_68 Start: 46124, Stop: 45867, Start Num: 20
Candidate Starts for Esperer_68:
(Start: 7 @46202 has 1 MA's), (Start: 8 @46196 has 3 MA's), (Start: 20 @46124 has 14 MA's), (Start: 23 @46115 has 12 MA's), (35, 45917),

Gene: GoldenEssence_15 Start: 7548, Stop: 7784, Start Num: 22
Candidate Starts for GoldenEssence_15:
(Start: 22 @7548 has 6 MA's), (38, 7770),

Gene: GoldenEssence_297 Start: 178101, Stop: 178337, Start Num: 22
Candidate Starts for GoldenEssence_297:
(Start: 22 @178101 has 6 MA's), (38, 178323),

Gene: Hydra_70 Start: 46968, Stop: 46711, Start Num: 20
Candidate Starts for Hydra_70:
(Start: 7 @47046 has 1 MA's), (Start: 8 @47040 has 3 MA's), (Start: 20 @46968 has 14 MA's), (Start: 23 @46959 has 12 MA's), (35, 46761),

Gene: Indigo_66 Start: 45774, Stop: 45517, Start Num: 20
Candidate Starts for Indigo_66:

(Start: 7 @45852 has 1 MA's), (Start: 8 @45846 has 3 MA's), (Start: 20 @45774 has 14 MA's), (Start: 23 @45765 has 12 MA's), (35, 45567),

Gene: Itza_71 Start: 45156, Stop: 44905, Start Num: 23

Candidate Starts for Itza_71:

(1, 45534), (4, 45387), (6, 45264), (Start: 23 @45156 has 12 MA's), (24, 45132), (26, 45111), (31, 45006), (35, 44955), (36, 44949), (38, 44919),

Gene: Izzy_69 Start: 46329, Stop: 46066, Start Num: 15

Candidate Starts for Izzy_69:

(Start: 15 @46329 has 1 MA's), (Start: 20 @46323 has 14 MA's), (Start: 23 @46314 has 12 MA's), (26, 46269), (35, 46116),

Gene: Jash_69 Start: 46276, Stop: 46019, Start Num: 20

Candidate Starts for Jash_69:

(Start: 15 @46282 has 1 MA's), (Start: 20 @46276 has 14 MA's), (Start: 23 @46267 has 12 MA's), (26, 46222), (35, 46069),

Gene: Kaine_71 Start: 45868, Stop: 45620, Start Num: 23

Candidate Starts for Kaine_71:

(13, 45880), (Start: 23 @45868 has 12 MA's), (30, 45721), (37, 45655),

Gene: KellEzio_44 Start: 32637, Stop: 32924, Start Num: 10

Candidate Starts for KellEzio_44:

(2, 32310), (3, 32343), (5, 32532), (Start: 10 @32637 has 4 MA's), (12, 32646), (27, 32769), (37, 32886),

Gene: Kitkat_46 Start: 32939, Stop: 33226, Start Num: 10

Candidate Starts for Kitkat_46:

(Start: 10 @32939 has 4 MA's), (12, 32948), (27, 33071), (37, 33188),

Gene: Lannister_67 Start: 46592, Stop: 46341, Start Num: 21

Candidate Starts for Lannister_67:

(Start: 21 @46592 has 3 MA's), (24, 46565), (35, 46391),

Gene: Legacy_67 Start: 46235, Stop: 45900, Start Num: 7

Candidate Starts for Legacy_67:

(Start: 7 @46235 has 1 MA's), (Start: 8 @46229 has 3 MA's), (Start: 20 @46157 has 14 MA's), (Start: 23 @46148 has 12 MA's), (35, 45950),

Gene: Leviticus_68 Start: 46311, Stop: 46054, Start Num: 20

Candidate Starts for Leviticus_68:

(Start: 7 @46389 has 1 MA's), (Start: 8 @46383 has 3 MA's), (Start: 20 @46311 has 14 MA's), (Start: 23 @46302 has 12 MA's), (35, 46104),

Gene: Maruru_99 Start: 59257, Stop: 58997, Start Num: 17

Candidate Starts for Maruru_99:

(Start: 17 @59257 has 2 MA's), (28, 59119),

Gene: Mimi_29 Start: 13192, Stop: 13428, Start Num: 22

Candidate Starts for Mimi_29:

(Start: 22 @13192 has 6 MA's), (35, 13378), (38, 13414),

Gene: Mimi_314 Start: 185852, Stop: 186088, Start Num: 22
Candidate Starts for Mimi_314:
(Start: 22 @185852 has 6 MA's), (35, 186038), (38, 186074),

Gene: Nanodon_69 Start: 46521, Stop: 46270, Start Num: 21
Candidate Starts for Nanodon_69:
(Start: 21 @46521 has 3 MA's), (24, 46494), (35, 46320),

Gene: Nerdos_66 Start: 45773, Stop: 45516, Start Num: 20
Candidate Starts for Nerdos_66:
(Start: 7 @45851 has 1 MA's), (Start: 8 @45845 has 3 MA's), (Start: 20 @45773 has 14 MA's), (Start: 23 @45764 has 12 MA's), (35, 45566),

Gene: Oliynyk_69 Start: 46270, Stop: 46019, Start Num: 21
Candidate Starts for Oliynyk_69:
(Start: 21 @46270 has 3 MA's), (24, 46243), (25, 46231), (35, 46069),

Gene: Ozzie_67 Start: 46238, Stop: 45909, Start Num: 8
Candidate Starts for Ozzie_67:
(Start: 7 @46244 has 1 MA's), (Start: 8 @46238 has 3 MA's), (Start: 20 @46166 has 14 MA's), (Start: 23 @46157 has 12 MA's), (35, 45959),

Gene: Patbob_27 Start: 13355, Stop: 13591, Start Num: 22
Candidate Starts for Patbob_27:
(Start: 22 @13355 has 6 MA's), (35, 13541), (38, 13577),

Gene: Patbob_317 Start: 188814, Stop: 189050, Start Num: 22
Candidate Starts for Patbob_317:
(Start: 22 @188814 has 6 MA's), (35, 189000), (38, 189036),

Gene: Pavo_72 Start: 46044, Stop: 45796, Start Num: 23
Candidate Starts for Pavo_72:
(13, 46056), (Start: 23 @46044 has 12 MA's), (30, 45897), (37, 45831),

Gene: Phettuccine_67 Start: 45774, Stop: 45517, Start Num: 20
Candidate Starts for Phettuccine_67:
(Start: 7 @45852 has 1 MA's), (Start: 8 @45846 has 3 MA's), (Start: 20 @45774 has 14 MA's), (Start: 23 @45765 has 12 MA's), (35, 45567),

Gene: Provolone_72 Start: 46185, Stop: 45937, Start Num: 23
Candidate Starts for Provolone_72:
(13, 46197), (Start: 23 @46185 has 12 MA's), (30, 46038), (37, 45972),

Gene: Racecar_30 Start: 13783, Stop: 14019, Start Num: 22
Candidate Starts for Racecar_30:
(Start: 22 @13783 has 6 MA's), (38, 14005),

Gene: Racecar_319 Start: 187492, Stop: 187728, Start Num: 22
Candidate Starts for Racecar_319:
(Start: 22 @187492 has 6 MA's), (38, 187714),

Gene: Rusticus_69 Start: 46276, Stop: 46019, Start Num: 20
Candidate Starts for Rusticus_69:

(Start: 15 @46282 has 1 MA's), (Start: 20 @46276 has 14 MA's), (Start: 23 @46267 has 12 MA's), (26, 46222), (35, 46069),

Gene: Saftant_69 Start: 45928, Stop: 45668, Start Num: 14

Candidate Starts for Saftant_69:

(11, 45934), (Start: 14 @45928 has 1 MA's), (30, 45769), (35, 45718), (37, 45703),

Gene: Sonali_98 Start: 60140, Stop: 59886, Start Num: 17

Candidate Starts for Sonali_98:

(Start: 17 @60140 has 2 MA's), (28, 60002),

Gene: Speedwell_73 Start: 46621, Stop: 46379, Start Num: 16

Candidate Starts for Speedwell_73:

(12, 46627), (Start: 16 @46621 has 1 MA's), (Start: 23 @46615 has 12 MA's), (24, 46591), (32, 46462),

Gene: SunsetPointe_67 Start: 46173, Stop: 45916, Start Num: 20

Candidate Starts for SunsetPointe_67:

(Start: 7 @46251 has 1 MA's), (Start: 8 @46245 has 3 MA's), (Start: 20 @46173 has 14 MA's), (Start: 23 @46164 has 12 MA's), (35, 45966),

Gene: Sunshine23_100 Start: 59946, Stop: 59692, Start Num: 17

Candidate Starts for Sunshine23_100:

(Start: 17 @59946 has 2 MA's), (28, 59808), (35, 59745),

Gene: Talia1610_315 Start: 187677, Stop: 187913, Start Num: 22

Candidate Starts for Talia1610_315:

(Start: 22 @187677 has 6 MA's), (38, 187899),

Gene: Talia1610_29 Start: 13205, Stop: 13441, Start Num: 22

Candidate Starts for Talia1610_29:

(Start: 22 @13205 has 6 MA's), (38, 13427),

Gene: Unstoppable_67 Start: 45772, Stop: 45515, Start Num: 20

Candidate Starts for Unstoppable_67:

(Start: 7 @45850 has 1 MA's), (Start: 8 @45844 has 3 MA's), (Start: 20 @45772 has 14 MA's), (Start: 23 @45763 has 12 MA's), (35, 45565),

Gene: Urza_70 Start: 45177, Stop: 44926, Start Num: 23

Candidate Starts for Urza_70:

(1, 45555), (4, 45408), (6, 45285), (Start: 23 @45177 has 12 MA's), (24, 45153), (26, 45132), (31, 45027), (35, 44976), (36, 44970), (38, 44940),

Gene: Vanseggelen_76 Start: 45785, Stop: 45537, Start Num: 23

Candidate Starts for Vanseggelen_76:

(Start: 23 @45785 has 12 MA's), (30, 45638), (37, 45572),

Gene: Verabelle_73 Start: 45224, Stop: 44976, Start Num: 23

Candidate Starts for Verabelle_73:

(Start: 23 @45224 has 12 MA's), (30, 45077), (37, 45011),

Gene: Verse_71 Start: 46482, Stop: 46234, Start Num: 23

Candidate Starts for Verse_71:

(Start: 23 @46482 has 12 MA's), (30, 46335), (35, 46284), (37, 46269),

Gene: phiCAM_67 Start: 47310, Stop: 47056, Start Num: 12

Candidate Starts for phiCAM_67:

(12, 47310), (Start: 16 @47304 has 1 MA's), (Start: 23 @47292 has 12 MA's), (35, 47106),