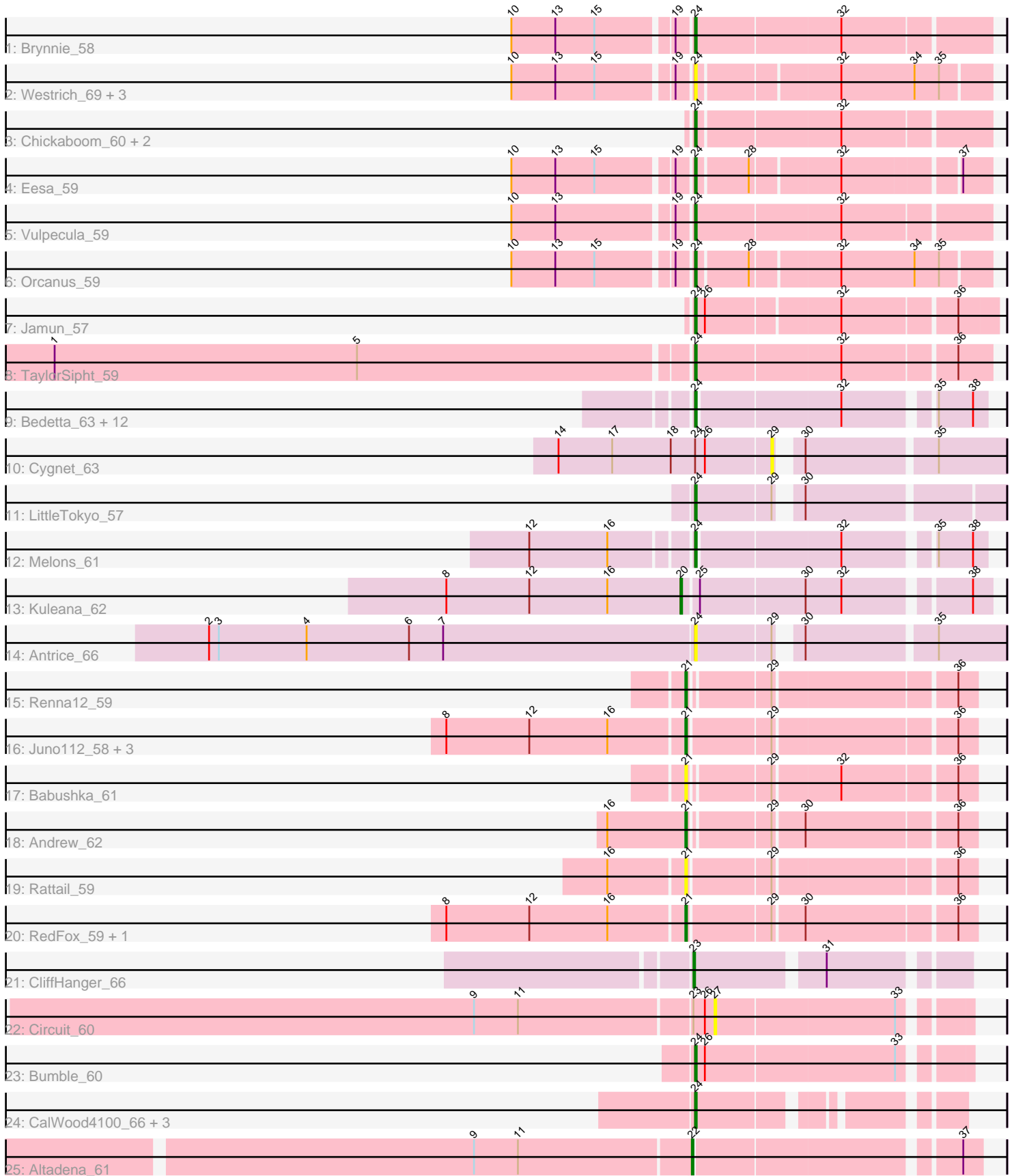


# Pham 214381



Note: Tracks are now grouped by subcluster and scaled. Switching in subcluster is indicated by changes in track color. Track scale is now set by default to display the region 30 bp upstream of start 1 to 30 bp downstream of the last possible start. If this default region is judged to be packed too tightly with annotated starts, the track will be further scaled to only show that region of the ORF with annotated starts. This action will be indicated by adding "Zoomed" to the title. For starts, yellow indicates the location of called starts comprised solely of Glimmer/GeneMark auto-annotations, green indicates the location of called starts with at least 1 manual gene annotation.

## Pham 214381 Report

This analysis was run 02/22/25 on database version 588.

Pham number 214381 has 49 members, 17 are drafts.

Phages represented in each track:

- Track 1 : Brynnie\_58
- Track 2 : Westrich\_69, KendraB23\_69, Gravel\_70, Pelletreau\_70
- Track 3 : Chickaboom\_60, Basilisk\_59, Ruchi\_58
- Track 4 : Eesa\_59
- Track 5 : Vulpecula\_59
- Track 6 : Orcanus\_59
- Track 7 : Jamun\_57
- Track 8 : TaylorSipht\_59
- Track 9 : Bedetta\_63, Amelia\_58, Coral\_58, Polka\_58, Colusalem\_61, Daob\_60, Kepler\_60, Lunar\_60, OtsoOtso\_67, Jerole\_68, Bibble12\_63, HannahPhantana\_60, Cote\_61
- Track 10 : Cygnet\_63
- Track 11 : LittleTokyo\_57
- Track 12 : Melons\_61
- Track 13 : Kuleana\_62
- Track 14 : Antrice\_66
- Track 15 : Renna12\_59
- Track 16 : Juno112\_58, PhluffyCoco\_59, HamCheese\_58, Atlantica\_59
- Track 17 : Babushka\_61
- Track 18 : Andrew\_62
- Track 19 : Rattail\_59
- Track 20 : RedFox\_59, Leona\_58
- Track 21 : CliffHanger\_66
- Track 22 : Circuit\_60
- Track 23 : Bumble\_60
- Track 24 : CalWood4100\_66, Lilmac1015\_66, Klevey\_65, Bolt007\_63
- Track 25 : Altadena\_61

### ***Summary of Final Annotations (See graph section above for start numbers):***

The start number called the most often in the published annotations is 24, it was called in 23 of the 32 non-draft genes in the pham.

Genes that call this "Most Annotated" start:

- Amelia\_58, Antrice\_66, Basilisk\_59, Bedetta\_63, Bibble12\_63, Bolt007\_63, Brynnie\_58, Bumble\_60, CalWood4100\_66, Chickaboom\_60, Colusalem\_61, Coral\_58, Cote\_61, Daob\_60, Eesa\_59, Gravel\_70, HannahPhantana\_60, Jamun\_57, Jerole\_68, KendraB23\_69, Kepler\_60, Klevey\_65, Lilmac1015\_66, LittleTokyo\_57, Lunar\_60, Melons\_61, Orcanus\_59, OtsoOtso\_67, Pelletreau\_70, Polka\_58, Ruchi\_58, TaylorSipt\_59, Vulpecula\_59, Westrich\_69,

Genes that have the "Most Annotated" start but do not call it:

- Cygnet\_63,

Genes that do not have the "Most Annotated" start:

- Altadena\_61, Andrew\_62, Atlantica\_59, Babushka\_61, Circuit\_60, CliffHanger\_66, HamCheese\_58, Juno112\_58, Kuleana\_62, Leona\_58, PhluffyCoco\_59, Rattail\_59, RedFox\_59, Renna12\_59,

### Summary by start number:

Start 20:

- Found in 1 of 49 ( 2.0% ) of genes in pham
- Manual Annotations of this start: 1 of 32
- Called 100.0% of time when present
- Phage (with cluster) where this start called: Kuleana\_62 (AS2),

Start 21:

- Found in 10 of 49 ( 20.4% ) of genes in pham
- Manual Annotations of this start: 6 of 32
- Called 100.0% of time when present
- Phage (with cluster) where this start called: Andrew\_62 (AS3), Atlantica\_59 (AS3), Babushka\_61 (AS3), HamCheese\_58 (AS3), Juno112\_58 (AS3), Leona\_58 (AS3), PhluffyCoco\_59 (AS3), Rattail\_59 (AS3), RedFox\_59 (AS3), Renna12\_59 (AS3),

Start 22:

- Found in 1 of 49 ( 2.0% ) of genes in pham
- Manual Annotations of this start: 1 of 32
- Called 100.0% of time when present
- Phage (with cluster) where this start called: Altadena\_61 (FH),

Start 23:

- Found in 2 of 49 ( 4.1% ) of genes in pham
- Manual Annotations of this start: 1 of 32
- Called 50.0% of time when present
- Phage (with cluster) where this start called: CliffHanger\_66 (EB),

Start 24:

- Found in 35 of 49 ( 71.4% ) of genes in pham
- Manual Annotations of this start: 23 of 32
- Called 97.1% of time when present
- Phage (with cluster) where this start called: Amelia\_58 (AS2), Antrice\_66 (AS2), Basilisk\_59 (AS1), Bedetta\_63 (AS2), Bibble12\_63 (AS2), Bolt007\_63 (FH), Brynnie\_58 (AS1), Bumble\_60 (FH), CalWood4100\_66 (FH), Chickaboom\_60 (AS1), Colusalem\_61 (AS2), Coral\_58 (AS2), Cote\_61 (AS2), Daob\_60 (AS2), Eesa\_59 (AS1), Gravel\_70 (AS1), HannahPhantana\_60 (AS2), Jamun\_57 (AS1), Jerole\_68 (AS2), KendraB23\_69 (AS1), Kepler\_60 (AS2), Klevey\_65 (FH), Lilmac1015\_66 (FH),

LittleTokyo\_57 (AS2), Lunar\_60 (AS2), Melons\_61 (AS2), Orcanus\_59 (AS1), OtsoOtso\_67 (AS2), Pelletreau\_70 (AS1), Polka\_58 (AS2), Ruchi\_58 (AS1), TaylorSipht\_59 (AS1), Vulpecula\_59 (AS1), Westrich\_69 (AS1),

Start 27:

- Found in 1 of 49 ( 2.0% ) of genes in pham
- No Manual Annotations of this start.
- Called 100.0% of time when present
- Phage (with cluster) where this start called: Circuit\_60 (FH),

Start 29:

- Found in 13 of 49 ( 26.5% ) of genes in pham
- No Manual Annotations of this start.
- Called 7.7% of time when present
- Phage (with cluster) where this start called: Cygnet\_63 (AS2),

### **Summary by clusters:**

There are 5 clusters represented in this pham: AS3, AS2, AS1, FH, EB,

Info for manual annotations of cluster AS1:

- Start number 24 was manually annotated 9 times for cluster AS1.

Info for manual annotations of cluster AS2:

- Start number 20 was manually annotated 1 time for cluster AS2.
- Start number 24 was manually annotated 10 times for cluster AS2.

Info for manual annotations of cluster AS3:

- Start number 21 was manually annotated 6 times for cluster AS3.

Info for manual annotations of cluster EB:

- Start number 23 was manually annotated 1 time for cluster EB.

Info for manual annotations of cluster FH:

- Start number 22 was manually annotated 1 time for cluster FH.
- Start number 24 was manually annotated 4 times for cluster FH.

### **Gene Information:**

Gene: Altadena\_61 Start: 39462, Stop: 39623, Start Num: 22

Candidate Starts for Altadena\_61:

(9, 39333), (11, 39360), (Start: 22 @39462 has 1 MA's), (37, 39612),

Gene: Amelia\_58 Start: 34705, Stop: 34866, Start Num: 24

Candidate Starts for Amelia\_58:

(Start: 24 @34705 has 23 MA's), (32, 34789), (35, 34837), (38, 34858),

Gene: Andrew\_62 Start: 36132, Stop: 36293, Start Num: 21

Candidate Starts for Andrew\_62:

(16, 36084), (Start: 21 @36132 has 6 MA's), (29, 36177), (30, 36195), (36, 36282),

Gene: Antrice\_66 Start: 35734, Stop: 35904, Start Num: 24  
Candidate Starts for Antrice\_66:  
(2, 35437), (3, 35443), (4, 35497), (6, 35560), (7, 35581), (Start: 24 @35734 has 23 MA's), (29, 35779),  
(30, 35788), (35, 35863),

Gene: Atlantica\_59 Start: 35604, Stop: 35768, Start Num: 21  
Candidate Starts for Atlantica\_59:  
(8, 35460), (12, 35511), (16, 35559), (Start: 21 @35604 has 6 MA's), (29, 35652), (36, 35757),

Gene: Babushka\_61 Start: 35400, Stop: 35561, Start Num: 21  
Candidate Starts for Babushka\_61:  
(Start: 21 @35400 has 6 MA's), (29, 35445), (32, 35484), (36, 35550),

Gene: Basilisk\_59 Start: 36355, Stop: 36525, Start Num: 24  
Candidate Starts for Basilisk\_59:  
(Start: 24 @36355 has 23 MA's), (32, 36439),

Gene: Bedetta\_63 Start: 34865, Stop: 35026, Start Num: 24  
Candidate Starts for Bedetta\_63:  
(Start: 24 @34865 has 23 MA's), (32, 34949), (35, 34997), (38, 35018),

Gene: Bibble12\_63 Start: 34700, Stop: 34861, Start Num: 24  
Candidate Starts for Bibble12\_63:  
(Start: 24 @34700 has 23 MA's), (32, 34784), (35, 34832), (38, 34853),

Gene: Bolt007\_63 Start: 41703, Stop: 41837, Start Num: 24  
Candidate Starts for Bolt007\_63:  
(Start: 24 @41703 has 23 MA's),

Gene: Brynnie\_58 Start: 36288, Stop: 36461, Start Num: 24  
Candidate Starts for Brynnie\_58:  
(10, 36186), (13, 36213), (15, 36237), (19, 36279), (Start: 24 @36288 has 23 MA's), (32, 36375),

Gene: Bumble\_60 Start: 40274, Stop: 40429, Start Num: 24  
Candidate Starts for Bumble\_60:  
(Start: 24 @40274 has 23 MA's), (26, 40280), (33, 40394),

Gene: CalWood4100\_66 Start: 41664, Stop: 41798, Start Num: 24  
Candidate Starts for CalWood4100\_66:  
(Start: 24 @41664 has 23 MA's),

Gene: Chickaboom\_60 Start: 36691, Stop: 36861, Start Num: 24  
Candidate Starts for Chickaboom\_60:  
(Start: 24 @36691 has 23 MA's), (32, 36775),

Gene: Circuit\_60 Start: 40818, Stop: 40961, Start Num: 27  
Candidate Starts for Circuit\_60:  
(9, 40677), (11, 40704), (Start: 23 @40806 has 1 MA's), (26, 40812), (27, 40818), (33, 40926),

Gene: CliffHanger\_66 Start: 37257, Stop: 37406, Start Num: 23  
Candidate Starts for CliffHanger\_66:  
(Start: 23 @37257 has 1 MA's), (31, 37329),

Gene: Colusalem\_61 Start: 34682, Stop: 34843, Start Num: 24  
Candidate Starts for Colusalem\_61:  
(Start: 24 @34682 has 23 MA's), (32, 34766), (35, 34814), (38, 34835),

Gene: Coral\_58 Start: 34610, Stop: 34771, Start Num: 24  
Candidate Starts for Coral\_58:  
(Start: 24 @34610 has 23 MA's), (32, 34694), (35, 34742), (38, 34763),

Gene: Cote\_61 Start: 35043, Stop: 35204, Start Num: 24  
Candidate Starts for Cote\_61:  
(Start: 24 @35043 has 23 MA's), (32, 35127), (35, 35175), (38, 35196),

Gene: Cygnet\_63 Start: 36263, Stop: 36388, Start Num: 29  
Candidate Starts for Cygnet\_63:  
(14, 36134), (17, 36167), (18, 36203), (Start: 24 @36218 has 23 MA's), (26, 36224), (29, 36263), (30, 36272), (35, 36347),

Gene: Daob\_60 Start: 35054, Stop: 35215, Start Num: 24  
Candidate Starts for Daob\_60:  
(Start: 24 @35054 has 23 MA's), (32, 35138), (35, 35186), (38, 35207),

Gene: Eesa\_59 Start: 37502, Stop: 37666, Start Num: 24  
Candidate Starts for Eesa\_59:  
(10, 37400), (13, 37427), (15, 37451), (19, 37493), (Start: 24 @37502 has 23 MA's), (28, 37532), (32, 37583), (37, 37649),

Gene: Gravel\_70 Start: 37719, Stop: 37889, Start Num: 24  
Candidate Starts for Gravel\_70:  
(10, 37617), (13, 37644), (15, 37668), (19, 37710), (Start: 24 @37719 has 23 MA's), (32, 37800), (34, 37845), (35, 37860),

Gene: HamCheese\_58 Start: 35590, Stop: 35754, Start Num: 21  
Candidate Starts for HamCheese\_58:  
(8, 35446), (12, 35497), (16, 35545), (Start: 21 @35590 has 6 MA's), (29, 35638), (36, 35743),

Gene: HannahPhantana\_60 Start: 34700, Stop: 34861, Start Num: 24  
Candidate Starts for HannahPhantana\_60:  
(Start: 24 @34700 has 23 MA's), (32, 34784), (35, 34832), (38, 34853),

Gene: Jamun\_57 Start: 36628, Stop: 36801, Start Num: 24  
Candidate Starts for Jamun\_57:  
(Start: 24 @36628 has 23 MA's), (26, 36634), (32, 36712), (36, 36778),

Gene: Jerole\_68 Start: 34824, Stop: 34985, Start Num: 24  
Candidate Starts for Jerole\_68:  
(Start: 24 @34824 has 23 MA's), (32, 34908), (35, 34956), (38, 34977),

Gene: Juno112\_58 Start: 35606, Stop: 35770, Start Num: 21  
Candidate Starts for Juno112\_58:  
(8, 35462), (12, 35513), (16, 35561), (Start: 21 @35606 has 6 MA's), (29, 35654), (36, 35759),

Gene: KendraB23\_69 Start: 37407, Stop: 37577, Start Num: 24  
Candidate Starts for KendraB23\_69:

(10, 37305), (13, 37332), (15, 37356), (19, 37398), (Start: 24 @37407 has 23 MA's), (32, 37488), (34, 37533), (35, 37548),

Gene: Kepler\_60 Start: 34821, Stop: 34982, Start Num: 24  
Candidate Starts for Kepler\_60:  
(Start: 24 @34821 has 23 MA's), (32, 34905), (35, 34953), (38, 34974),

Gene: Klevey\_65 Start: 41409, Stop: 41543, Start Num: 24  
Candidate Starts for Klevey\_65:  
(Start: 24 @41409 has 23 MA's),

Gene: Kuleana\_62 Start: 35611, Stop: 35784, Start Num: 20  
Candidate Starts for Kuleana\_62:  
(8, 35467), (12, 35518), (16, 35566), (Start: 20 @35611 has 1 MA's), (25, 35620), (30, 35683), (32, 35704), (38, 35773),

Gene: Leona\_58 Start: 35698, Stop: 35859, Start Num: 21  
Candidate Starts for Leona\_58:  
(8, 35554), (12, 35605), (16, 35653), (Start: 21 @35698 has 6 MA's), (29, 35743), (30, 35761), (36, 35848),

Gene: Lilmac1015\_66 Start: 41664, Stop: 41798, Start Num: 24  
Candidate Starts for Lilmac1015\_66:  
(Start: 24 @41664 has 23 MA's),

Gene: LittleTokyo\_57 Start: 34219, Stop: 34386, Start Num: 24  
Candidate Starts for LittleTokyo\_57:  
(Start: 24 @34219 has 23 MA's), (29, 34264), (30, 34273),

Gene: Lunar\_60 Start: 34733, Stop: 34894, Start Num: 24  
Candidate Starts for Lunar\_60:  
(Start: 24 @34733 has 23 MA's), (32, 34817), (35, 34865), (38, 34886),

Gene: Melons\_61 Start: 34888, Stop: 35049, Start Num: 24  
Candidate Starts for Melons\_61:  
(12, 34795), (16, 34843), (Start: 24 @34888 has 23 MA's), (32, 34972), (35, 35020), (38, 35041),

Gene: Orcanus\_59 Start: 36837, Stop: 37007, Start Num: 24  
Candidate Starts for Orcanus\_59:  
(10, 36735), (13, 36762), (15, 36786), (19, 36828), (Start: 24 @36837 has 23 MA's), (28, 36867), (32, 36918), (34, 36963), (35, 36978),

Gene: OtsoOtso\_67 Start: 34555, Stop: 34716, Start Num: 24  
Candidate Starts for OtsoOtso\_67:  
(Start: 24 @34555 has 23 MA's), (32, 34639), (35, 34687), (38, 34708),

Gene: Pelletreau\_70 Start: 37719, Stop: 37889, Start Num: 24  
Candidate Starts for Pelletreau\_70:  
(10, 37617), (13, 37644), (15, 37668), (19, 37710), (Start: 24 @37719 has 23 MA's), (32, 37800), (34, 37845), (35, 37860),

Gene: PhluffyCoco\_59 Start: 35705, Stop: 35869, Start Num: 21  
Candidate Starts for PhluffyCoco\_59:

(8, 35561), (12, 35612), (16, 35660), (Start: 21 @35705 has 6 MA's), (29, 35753), (36, 35858),

Gene: Polka\_58 Start: 34555, Stop: 34716, Start Num: 24

Candidate Starts for Polka\_58:

(Start: 24 @34555 has 23 MA's), (32, 34639), (35, 34687), (38, 34708),

Gene: Rattail\_59 Start: 35790, Stop: 35954, Start Num: 21

Candidate Starts for Rattail\_59:

(16, 35745), (Start: 21 @35790 has 6 MA's), (29, 35838), (36, 35943),

Gene: RedFox\_59 Start: 35703, Stop: 35867, Start Num: 21

Candidate Starts for RedFox\_59:

(8, 35559), (12, 35610), (16, 35658), (Start: 21 @35703 has 6 MA's), (29, 35751), (30, 35769), (36, 35856),

Gene: Renna12\_59 Start: 35816, Stop: 35977, Start Num: 21

Candidate Starts for Renna12\_59:

(Start: 21 @35816 has 6 MA's), (29, 35861), (36, 35966),

Gene: Ruchi\_58 Start: 36277, Stop: 36447, Start Num: 24

Candidate Starts for Ruchi\_58:

(Start: 24 @36277 has 23 MA's), (32, 36361),

Gene: TaylorSipht\_59 Start: 36450, Stop: 36623, Start Num: 24

Candidate Starts for TaylorSipht\_59:

(1, 36066), (5, 36252), (Start: 24 @36450 has 23 MA's), (32, 36537), (36, 36603),

Gene: Vulpecula\_59 Start: 36124, Stop: 36297, Start Num: 24

Candidate Starts for Vulpecula\_59:

(10, 36022), (13, 36049), (19, 36115), (Start: 24 @36124 has 23 MA's), (32, 36211),

Gene: Westrich\_69 Start: 37643, Stop: 37813, Start Num: 24

Candidate Starts for Westrich\_69:

(10, 37541), (13, 37568), (15, 37592), (19, 37634), (Start: 24 @37643 has 23 MA's), (32, 37724), (34, 37769), (35, 37784),