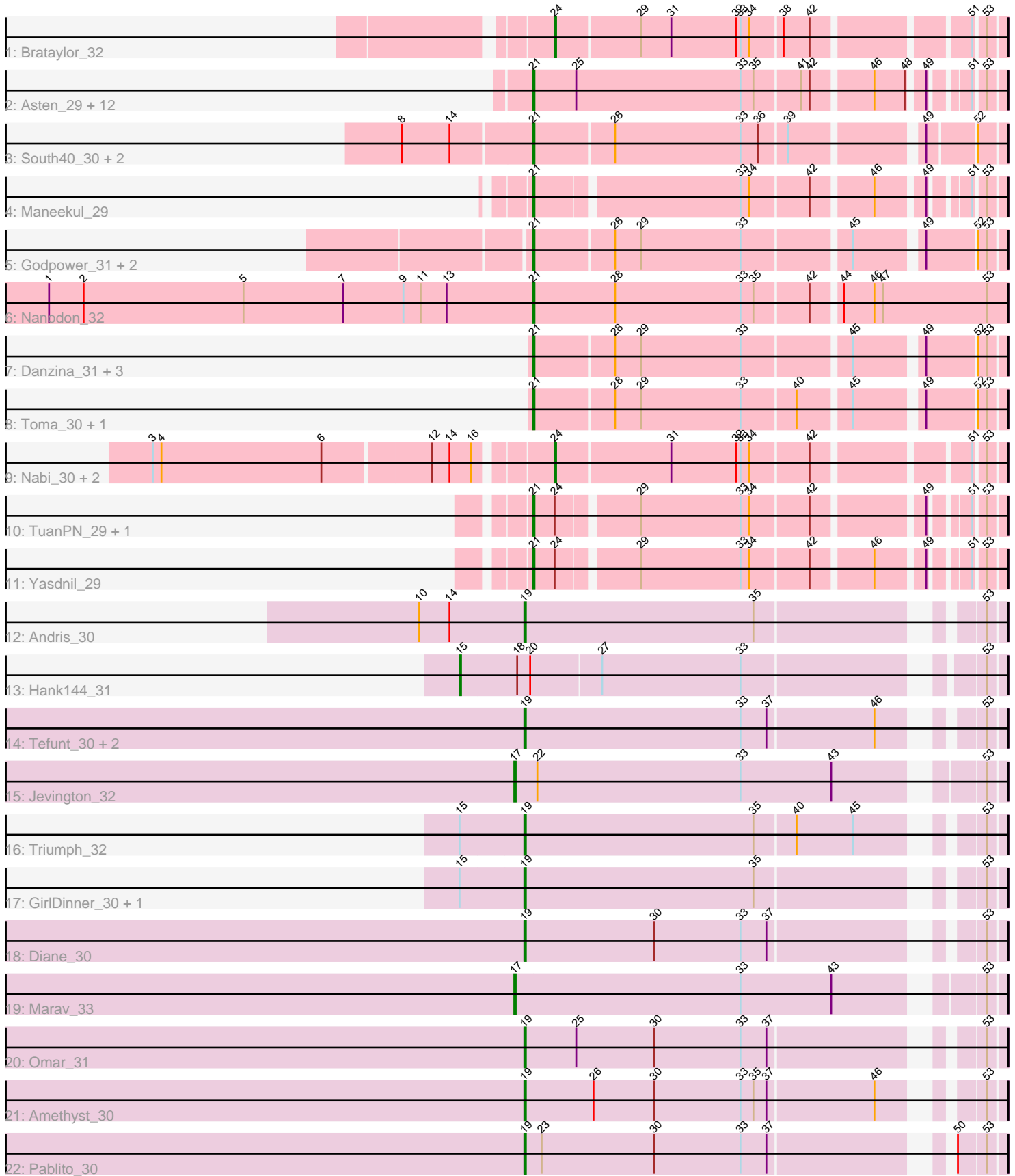


Pham 214384



Note: Tracks are now grouped by subcluster and scaled. Switching in subcluster is indicated by changes in track color. Track scale is now set by default to display the region 30 bp upstream of start 1 to 30 bp downstream of the last possible start. If this default region is judged to be packed too tightly with annotated starts, the track will be further scaled to only show that region of the ORF with annotated starts. This action will be indicated by adding "Zoomed" to the title. For starts, yellow indicates the location of called starts comprised solely of Glimmer/GeneMark auto-annotations, green indicates the location of called starts with at least 1 manual gene annotation.

Pham 214384 Report

This analysis was run 02/22/25 on database version 588.

Pham number 214384 has 48 members, 0 are drafts.

Phages represented in each track:

- Track 1 : Brataylor_32
- Track 2 : Asten_29, Dwayne_29, BarryBee_31, Hippo_29, Emaanora_31, Werner_29, OzzyJ_30, Triste_29, TagePhighter_30, SarahRose_29, Snorlax_29, Chucky_29, Whatever_29
- Track 3 : South40_30, Katalie_30, RedBear_31
- Track 4 : Maneekul_29
- Track 5 : Godpower_31, Sujidade_31, Lika_30
- Track 6 : Nanodon_32
- Track 7 : Danzina_31, Zemlya_31, Dattran_31, Celeste_30
- Track 8 : Toma_30, Goby_30
- Track 9 : Nabi_30, Lorelei_30, Rana_30
- Track 10 : TuanPN_29, Ejemplo_29
- Track 11 : Yasdnil_29
- Track 12 : Andris_30
- Track 13 : Hank144_31
- Track 14 : Tefunt_30, Nishikigoi_30, Haizum_30
- Track 15 : Jevington_32
- Track 16 : Triumph_32
- Track 17 : GirlDinner_30, Janus_31
- Track 18 : Diane_30
- Track 19 : Marav_33
- Track 20 : Omar_31
- Track 21 : Amethyst_30
- Track 22 : Pablito_30

Summary of Final Annotations (See graph section above for start numbers):

The start number called the most often in the published annotations is 21, it was called in 30 of the 48 non-draft genes in the pham.

Genes that call this "Most Annotated" start:

- Asten_29, BarryBee_31, Celeste_30, Chucky_29, Danzina_31, Dattran_31, Dwayne_29, Ejemplo_29, Emaanora_31, Goby_30, Godpower_31, Hippo_29, Katalie_30, Lika_30, Maneekul_29, Nanodon_32, OzzyJ_30, RedBear_31,

SarahRose_29, Snorlax_29, South40_30, Sujidade_31, TagePhighter_30, Toma_30, Triste_29, TuanPN_29, Werner_29, Whatever_29, Yasdnii_29, Zemlya_31,

Genes that have the "Most Annotated" start but do not call it:

-

Genes that do not have the "Most Annotated" start:

• Amethyst_30, Andris_30, Brataylor_32, Diane_30, GirlDinner_30, Haizum_30, Hank144_31, Janus_31, Jevington_32, Lorelei_30, Marav_33, Nabi_30, Nishikigoi_30, Omar_31, Pablito_30, Rana_30, Tefunt_30, Triumph_32,

Summary by start number:

Start 15:

- Found in 4 of 48 (8.3%) of genes in pham
- Manual Annotations of this start: 1 of 48
- Called 25.0% of time when present
- Phage (with cluster) where this start called: Hank144_31 (BD2),

Start 17:

- Found in 2 of 48 (4.2%) of genes in pham
- Manual Annotations of this start: 2 of 48
- Called 100.0% of time when present
- Phage (with cluster) where this start called: Jevington_32 (BD2), Marav_33 (BD2),

Start 19:

- Found in 11 of 48 (22.9%) of genes in pham
- Manual Annotations of this start: 11 of 48
- Called 100.0% of time when present
- Phage (with cluster) where this start called: Amethyst_30 (BD2), Andris_30 (BD2), Diane_30 (BD2), GirlDinner_30 (BD2), Haizum_30 (BD2), Janus_31 (BD2), Nishikigoi_30 (BD2), Omar_31 (BD2), Pablito_30 (BD2), Tefunt_30 (BD2), Triumph_32 (BD2),

Start 21:

- Found in 30 of 48 (62.5%) of genes in pham
- Manual Annotations of this start: 30 of 48
- Called 100.0% of time when present
- Phage (with cluster) where this start called: Asten_29 (BD1), BarryBee_31 (BD1), Celeste_30 (BD1), Chucky_29 (BD1), Danzina_31 (BD1), Dattran_31 (BD1), Dwayne_29 (BD1), Ejemplo_29 (BD1), Emaanora_31 (BD1), Goby_30 (BD1), Godpower_31 (BD1), Hippo_29 (BD1), Katalie_30 (BD1), Lika_30 (BD1), Maneekul_29 (BD1), Nanodon_32 (BD1), OzzyJ_30 (BD1), RedBear_31 (BD1), SarahRose_29 (BD1), Snorlax_29 (BD1), South40_30 (BD1), Sujidade_31 (BD1), TagePhighter_30 (BD1), Toma_30 (BD1), Triste_29 (BD1), TuanPN_29 (BD1), Werner_29 (BD1), Whatever_29 (BD1), Yasdnii_29 (BD1), Zemlya_31 (BD1),

Start 24:

- Found in 7 of 48 (14.6%) of genes in pham
- Manual Annotations of this start: 4 of 48
- Called 57.1% of time when present
- Phage (with cluster) where this start called: Brataylor_32 (BD1), Lorelei_30 (BD1), Nabi_30 (BD1), Rana_30 (BD1),

Summary by clusters:

There are 2 clusters represented in this pham: BD1, BD2,

Info for manual annotations of cluster BD1:

- Start number 21 was manually annotated 30 times for cluster BD1.
- Start number 24 was manually annotated 4 times for cluster BD1.

Info for manual annotations of cluster BD2:

- Start number 15 was manually annotated 1 time for cluster BD2.
- Start number 17 was manually annotated 2 times for cluster BD2.
- Start number 19 was manually annotated 11 times for cluster BD2.

Gene Information:

Gene: Amethyst_30 Start: 23945, Stop: 24244, Start Num: 19

Candidate Starts for Amethyst_30:

(Start: 19 @23945 has 11 MA's), (26, 23993), (30, 24035), (33, 24095), (35, 24104), (37, 24113), (46, 24185), (53, 24233),

Gene: Andris_30 Start: 23975, Stop: 24274, Start Num: 19

Candidate Starts for Andris_30:

(10, 23903), (14, 23924), (Start: 19 @23975 has 11 MA's), (35, 24134), (53, 24263),

Gene: Asten_29 Start: 23467, Stop: 23763, Start Num: 21

Candidate Starts for Asten_29:

(Start: 21 @23467 has 30 MA's), (25, 23497), (33, 23611), (35, 23620), (41, 23650), (42, 23656), (46, 23695), (48, 23716), (49, 23725), (51, 23746), (53, 23752),

Gene: BarryBee_31 Start: 23477, Stop: 23773, Start Num: 21

Candidate Starts for BarryBee_31:

(Start: 21 @23477 has 30 MA's), (25, 23507), (33, 23621), (35, 23630), (41, 23660), (42, 23666), (46, 23705), (48, 23726), (49, 23735), (51, 23756), (53, 23762),

Gene: Brataylor_32 Start: 24443, Stop: 24727, Start Num: 24

Candidate Starts for Brataylor_32:

(Start: 24 @24443 has 4 MA's), (29, 24500), (31, 24521), (32, 24566), (33, 24569), (34, 24575), (38, 24596), (42, 24614), (51, 24710), (53, 24716),

Gene: Celeste_30 Start: 23894, Stop: 24196, Start Num: 21

Candidate Starts for Celeste_30:

(Start: 21 @23894 has 30 MA's), (28, 23948), (29, 23966), (33, 24035), (45, 24104), (49, 24146), (52, 24179), (53, 24185),

Gene: Chucky_29 Start: 23481, Stop: 23777, Start Num: 21

Candidate Starts for Chucky_29:

(Start: 21 @23481 has 30 MA's), (25, 23511), (33, 23625), (35, 23634), (41, 23664), (42, 23670), (46, 23709), (48, 23730), (49, 23739), (51, 23760), (53, 23766),

Gene: Danzina_31 Start: 24195, Stop: 24497, Start Num: 21

Candidate Starts for Danzina_31:

(Start: 21 @24195 has 30 MA's), (28, 24249), (29, 24267), (33, 24336), (45, 24405), (49, 24447), (52, 24480), (53, 24486),

Gene: Dattran_31 Start: 24001, Stop: 24303, Start Num: 21

Candidate Starts for Dattran_31:

(Start: 21 @24001 has 30 MA's), (28, 24055), (29, 24073), (33, 24142), (45, 24211), (49, 24253), (52, 24286), (53, 24292),

Gene: Diane_30 Start: 24288, Stop: 24587, Start Num: 19

Candidate Starts for Diane_30:

(Start: 19 @24288 has 11 MA's), (30, 24378), (33, 24438), (37, 24456), (53, 24576),

Gene: Dwayne_29 Start: 23468, Stop: 23764, Start Num: 21

Candidate Starts for Dwayne_29:

(Start: 21 @23468 has 30 MA's), (25, 23498), (33, 23612), (35, 23621), (41, 23651), (42, 23657), (46, 23696), (48, 23717), (49, 23726), (51, 23747), (53, 23753),

Gene: Ejemplo_29 Start: 23530, Stop: 23817, Start Num: 21

Candidate Starts for Ejemplo_29:

(Start: 21 @23530 has 30 MA's), (Start: 24 @23545 has 4 MA's), (29, 23596), (33, 23665), (34, 23671), (42, 23710), (49, 23779), (51, 23800), (53, 23806),

Gene: Emaanora_31 Start: 23426, Stop: 23722, Start Num: 21

Candidate Starts for Emaanora_31:

(Start: 21 @23426 has 30 MA's), (25, 23456), (33, 23570), (35, 23579), (41, 23609), (42, 23615), (46, 23654), (48, 23675), (49, 23684), (51, 23705), (53, 23711),

Gene: GirlDinner_30 Start: 23927, Stop: 24226, Start Num: 19

Candidate Starts for GirlDinner_30:

(Start: 15 @23885 has 1 MA's), (Start: 19 @23927 has 11 MA's), (35, 24086), (53, 24215),

Gene: Goby_30 Start: 24022, Stop: 24324, Start Num: 21

Candidate Starts for Goby_30:

(Start: 21 @24022 has 30 MA's), (28, 24076), (29, 24094), (33, 24163), (40, 24199), (45, 24232), (49, 24274), (52, 24307), (53, 24313),

Gene: Godpower_31 Start: 24016, Stop: 24318, Start Num: 21

Candidate Starts for Godpower_31:

(Start: 21 @24016 has 30 MA's), (28, 24070), (29, 24088), (33, 24157), (45, 24226), (49, 24268), (52, 24301), (53, 24307),

Gene: Haizum_30 Start: 23962, Stop: 24261, Start Num: 19

Candidate Starts for Haizum_30:

(Start: 19 @23962 has 11 MA's), (33, 24112), (37, 24130), (46, 24202), (53, 24250),

Gene: Hank144_31 Start: 24298, Stop: 24642, Start Num: 15

Candidate Starts for Hank144_31:

(Start: 15 @24298 has 1 MA's), (18, 24337), (20, 24346), (27, 24394), (33, 24490), (53, 24631),

Gene: Hippo_29 Start: 23477, Stop: 23773, Start Num: 21

Candidate Starts for Hippo_29:

(Start: 21 @23477 has 30 MA's), (25, 23507), (33, 23621), (35, 23630), (41, 23660), (42, 23666), (46, 23705), (48, 23726), (49, 23735), (51, 23756), (53, 23762),

Gene: Janus_31 Start: 24265, Stop: 24564, Start Num: 19

Candidate Starts for Janus_31:

(Start: 15 @24223 has 1 MA's), (Start: 19 @24265 has 11 MA's), (35, 24424), (53, 24553),

Gene: Jevington_32 Start: 24613, Stop: 24927, Start Num: 17

Candidate Starts for Jevington_32:

(Start: 17 @24613 has 2 MA's), (22, 24628), (33, 24769), (43, 24832), (53, 24916),

Gene: Katalie_30 Start: 23761, Stop: 24060, Start Num: 21

Candidate Starts for Katalie_30:

(8, 23674), (14, 23707), (Start: 21 @23761 has 30 MA's), (28, 23815), (33, 23902), (36, 23914), (39, 23932), (49, 24013), (52, 24043),

Gene: Lika_30 Start: 24020, Stop: 24322, Start Num: 21

Candidate Starts for Lika_30:

(Start: 21 @24020 has 30 MA's), (28, 24074), (29, 24092), (33, 24161), (45, 24230), (49, 24272), (52, 24305), (53, 24311),

Gene: Lorelei_30 Start: 23978, Stop: 24262, Start Num: 24

Candidate Starts for Lorelei_30:

(3, 23717), (4, 23723), (6, 23834), (12, 23906), (14, 23918), (16, 23933), (Start: 24 @23978 has 4 MA's), (31, 24056), (32, 24101), (33, 24104), (34, 24110), (42, 24149), (51, 24245), (53, 24251),

Gene: Maneekul_29 Start: 23501, Stop: 23788, Start Num: 21

Candidate Starts for Maneekul_29:

(Start: 21 @23501 has 30 MA's), (33, 23636), (34, 23642), (42, 23681), (46, 23720), (49, 23750), (51, 23771), (53, 23777),

Gene: Marav_33 Start: 24943, Stop: 25257, Start Num: 17

Candidate Starts for Marav_33:

(Start: 17 @24943 has 2 MA's), (33, 25099), (43, 25162), (53, 25246),

Gene: Nabi_30 Start: 23978, Stop: 24262, Start Num: 24

Candidate Starts for Nabi_30:

(3, 23717), (4, 23723), (6, 23834), (12, 23906), (14, 23918), (16, 23933), (Start: 24 @23978 has 4 MA's), (31, 24056), (32, 24101), (33, 24104), (34, 24110), (42, 24149), (51, 24245), (53, 24251),

Gene: Nanodon_32 Start: 23831, Stop: 24151, Start Num: 21

Candidate Starts for Nanodon_32:

(1, 23495), (2, 23519), (5, 23630), (7, 23699), (9, 23741), (11, 23753), (13, 23771), (Start: 21 @23831 has 30 MA's), (28, 23888), (33, 23975), (35, 23984), (42, 24020), (44, 24038), (46, 24059), (47, 24065), (53, 24137),

Gene: Nishikigoi_30 Start: 23962, Stop: 24261, Start Num: 19

Candidate Starts for Nishikigoi_30:

(Start: 19 @23962 has 11 MA's), (33, 24112), (37, 24130), (46, 24202), (53, 24250),

Gene: Omar_31 Start: 24224, Stop: 24523, Start Num: 19

Candidate Starts for Omar_31:

(Start: 19 @24224 has 11 MA's), (25, 24260), (30, 24314), (33, 24374), (37, 24392), (53, 24512),

Gene: OzzyJ_30 Start: 23468, Stop: 23764, Start Num: 21

Candidate Starts for OzzyJ_30:

(Start: 21 @23468 has 30 MA's), (25, 23498), (33, 23612), (35, 23621), (41, 23651), (42, 23657), (46, 23696), (48, 23717), (49, 23726), (51, 23747), (53, 23753),

Gene: Pablito_30 Start: 23843, Stop: 24142, Start Num: 19

Candidate Starts for Pablito_30:

(Start: 19 @23843 has 11 MA's), (23, 23855), (30, 23933), (33, 23993), (37, 24011), (50, 24113), (53, 24131),

Gene: Rana_30 Start: 23978, Stop: 24262, Start Num: 24

Candidate Starts for Rana_30:

(3, 23717), (4, 23723), (6, 23834), (12, 23906), (14, 23918), (16, 23933), (Start: 24 @23978 has 4 MA's), (31, 24056), (32, 24101), (33, 24104), (34, 24110), (42, 24149), (51, 24245), (53, 24251),

Gene: RedBear_31 Start: 23761, Stop: 24060, Start Num: 21

Candidate Starts for RedBear_31:

(8, 23674), (14, 23707), (Start: 21 @23761 has 30 MA's), (28, 23815), (33, 23902), (36, 23914), (39, 23932), (49, 24013), (52, 24043),

Gene: SarahRose_29 Start: 23477, Stop: 23773, Start Num: 21

Candidate Starts for SarahRose_29:

(Start: 21 @23477 has 30 MA's), (25, 23507), (33, 23621), (35, 23630), (41, 23660), (42, 23666), (46, 23705), (48, 23726), (49, 23735), (51, 23756), (53, 23762),

Gene: Snorlax_29 Start: 23480, Stop: 23776, Start Num: 21

Candidate Starts for Snorlax_29:

(Start: 21 @23480 has 30 MA's), (25, 23510), (33, 23624), (35, 23633), (41, 23663), (42, 23669), (46, 23708), (48, 23729), (49, 23738), (51, 23759), (53, 23765),

Gene: South40_30 Start: 23761, Stop: 24060, Start Num: 21

Candidate Starts for South40_30:

(8, 23674), (14, 23707), (Start: 21 @23761 has 30 MA's), (28, 23815), (33, 23902), (36, 23914), (39, 23932), (49, 24013), (52, 24043),

Gene: Sujidade_31 Start: 24305, Stop: 24607, Start Num: 21

Candidate Starts for Sujidade_31:

(Start: 21 @24305 has 30 MA's), (28, 24359), (29, 24377), (33, 24446), (45, 24515), (49, 24557), (52, 24590), (53, 24596),

Gene: TagePighther_30 Start: 23480, Stop: 23776, Start Num: 21

Candidate Starts for TagePighther_30:

(Start: 21 @23480 has 30 MA's), (25, 23510), (33, 23624), (35, 23633), (41, 23663), (42, 23669), (46, 23708), (48, 23729), (49, 23738), (51, 23759), (53, 23765),

Gene: Tefunt_30 Start: 23965, Stop: 24264, Start Num: 19

Candidate Starts for Tefunt_30:

(Start: 19 @23965 has 11 MA's), (33, 24115), (37, 24133), (46, 24205), (53, 24253),

Gene: Toma_30 Start: 24022, Stop: 24324, Start Num: 21

Candidate Starts for Toma_30:

(Start: 21 @24022 has 30 MA's), (28, 24076), (29, 24094), (33, 24163), (40, 24199), (45, 24232), (49, 24274), (52, 24307), (53, 24313),

Gene: Triste_29 Start: 23468, Stop: 23764, Start Num: 21

Candidate Starts for Triste_29:

(Start: 21 @23468 has 30 MA's), (25, 23498), (33, 23612), (35, 23621), (41, 23651), (42, 23657), (46, 23696), (48, 23717), (49, 23726), (51, 23747), (53, 23753),

Gene: Triumph_32 Start: 24163, Stop: 24462, Start Num: 19

Candidate Starts for Triumph_32:

(Start: 15 @24121 has 1 MA's), (Start: 19 @24163 has 11 MA's), (35, 24322), (40, 24349), (45, 24388), (53, 24451),

Gene: TuanPN_29 Start: 23530, Stop: 23817, Start Num: 21

Candidate Starts for TuanPN_29:

(Start: 21 @23530 has 30 MA's), (Start: 24 @23545 has 4 MA's), (29, 23596), (33, 23665), (34, 23671), (42, 23710), (49, 23779), (51, 23800), (53, 23806),

Gene: Werner_29 Start: 23478, Stop: 23774, Start Num: 21

Candidate Starts for Werner_29:

(Start: 21 @23478 has 30 MA's), (25, 23508), (33, 23622), (35, 23631), (41, 23661), (42, 23667), (46, 23706), (48, 23727), (49, 23736), (51, 23757), (53, 23763),

Gene: Whatever_29 Start: 23478, Stop: 23774, Start Num: 21

Candidate Starts for Whatever_29:

(Start: 21 @23478 has 30 MA's), (25, 23508), (33, 23622), (35, 23631), (41, 23661), (42, 23667), (46, 23706), (48, 23727), (49, 23736), (51, 23757), (53, 23763),

Gene: Yasdnil_29 Start: 23529, Stop: 23816, Start Num: 21

Candidate Starts for Yasdnil_29:

(Start: 21 @23529 has 30 MA's), (Start: 24 @23544 has 4 MA's), (29, 23595), (33, 23664), (34, 23670), (42, 23709), (46, 23748), (49, 23778), (51, 23799), (53, 23805),

Gene: Zemlya_31 Start: 24001, Stop: 24303, Start Num: 21

Candidate Starts for Zemlya_31:

(Start: 21 @24001 has 30 MA's), (28, 24055), (29, 24073), (33, 24142), (45, 24211), (49, 24253), (52, 24286), (53, 24292),